

V&V Reference Report

L2 ASCDS Version : 10.4

Observation 17642 - L2 Version 1
Chandra X-Ray Center

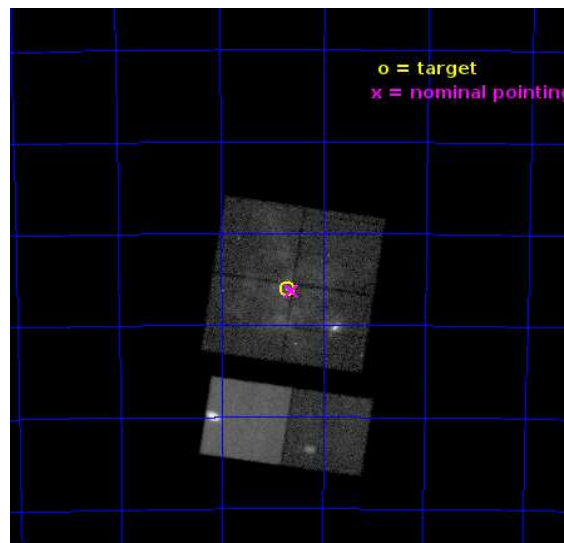
L2 Processing Date : Jun 9 2015

Contents

1	Front	2
2	OBI	3
2.1	OBI	3
2.1.1	Images	3
2.1.2	Bias	3
2.1.3	Parameters	4
2.1.4	Events	4
2.2	Compared Parameters	5
2.3	Aspect	6
2.4	Star Slots	9
2.4.1	Slot 3	9
2.4.2	Slot 4	10
2.4.3	Slot 5	11
2.4.4	Slot 6	12
2.4.5	Slot 7	13
2.5	FID Slots	14
2.5.1	Slot 0	14
2.5.2	Slot 1	15
2.5.3	Slot 2	16
A	Summary	17
A.1	Status	17
A.2	Comments	17

1 Front

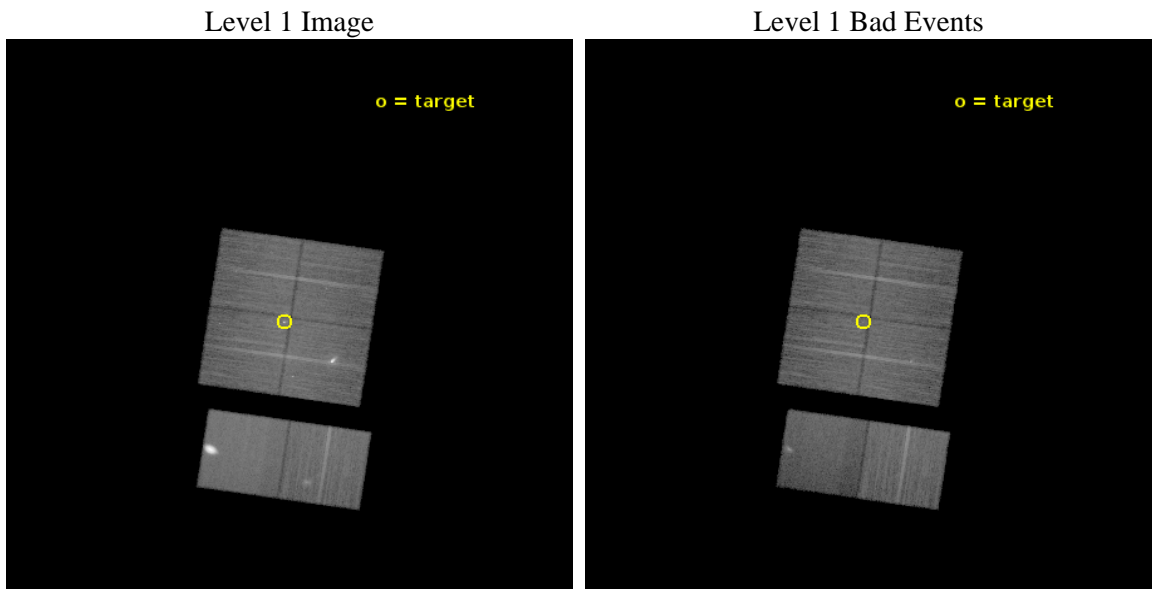
seq_num	901116	Sequence number
obs_id	17642	Observation id
title	The Tarantula -- Revealed by X-rays (T-ReX): A Definitive Chandra Investigation of 30 Doradus	Proposal title
observer	Dr. Leisa Townsley	Principal investigator
object	30 Doradus	Source name
dtcycle	0	
cycle	P	events from which exps? Prim/Second/Both
ra_targ	84.676667	Observer's specified target RA [deg]
dec_targ	-69.100806	Observer's specified target Dec [deg]
ra_nom	84.656009494213	Nominal RA [deg]
dec_nom	-69.104355597446	Nominal Dec [deg]
roll_nom	188.41154984421	Nominal Roll [deg]
revision	1	Processing version of data
ontime	34879.199006796	Sum of GTIs [s]
livetime	34437.53758724	Livetime [s]
ontime0	34879.075886846	Sum of GTIs [s]
ontime1	34879.116926789	Sum of GTIs [s]
ontime2	34879.157966852	Sum of GTIs [s]
ontime3	34879.199006796	Sum of GTIs [s]
ontime6	34879.281086802	Sum of GTIs [s]
ontime7	34872.758066297	Sum of GTIs [s]
l2events	342837	Number of level 2 events



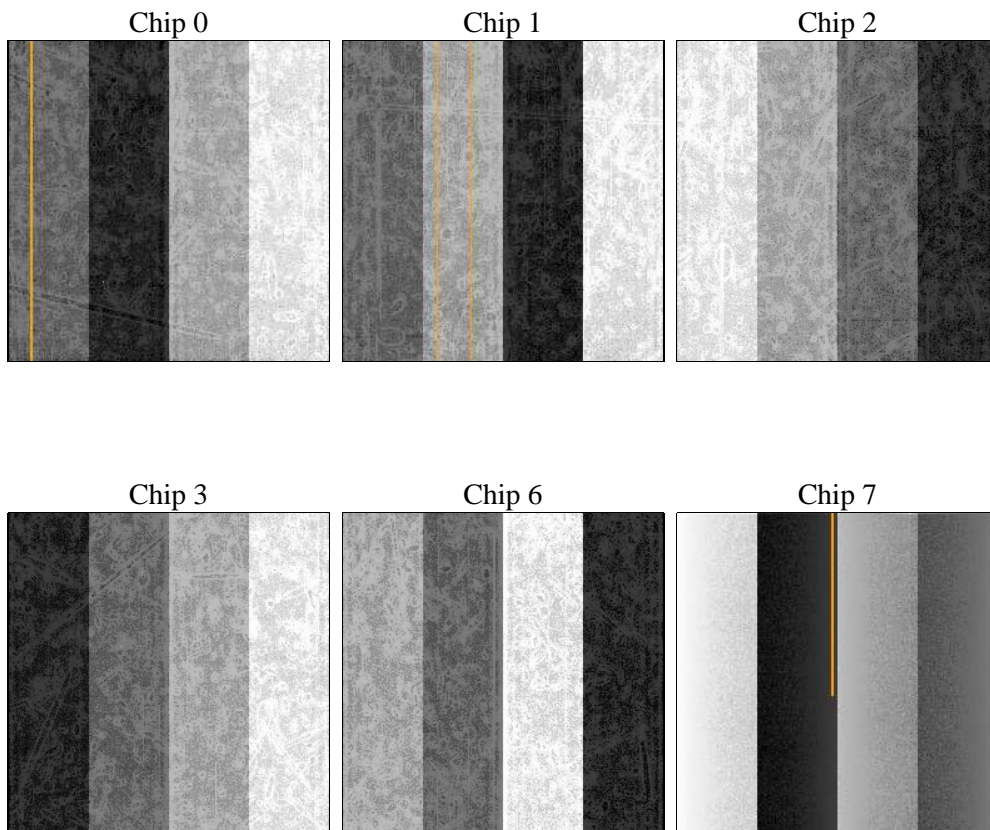
2 OBI

2.1 OBI

2.1.1 Images



2.1.2 Bias



2.1.3 Parameters

obi_num	0	Obi number	sched_exp_time	34924.545000	[s] Scheduled observation exposure time
ascdsver	10.4	Processing system revision	ontime	34879.199006796	Sum of GTIs [s]
caldsver	4.6.7	 	ontime0	34879.075886846	Sum of GTIs [s]
date	2015-06-09T04:05:08	Date and time of file creation	ontime1	34879.116926789	Sum of GTIs [s]
revision	1	Processing version of data	ontime2	34879.157966852	Sum of GTIs [s]
			ontime3	34879.199006796	Sum of GTIs [s]
			ontime6	34879.281086802	Sum of GTIs [s]
			ontime7	34872.758066297	Sum of GTIs [s]
			l1events	1169443	Number of level 1 events

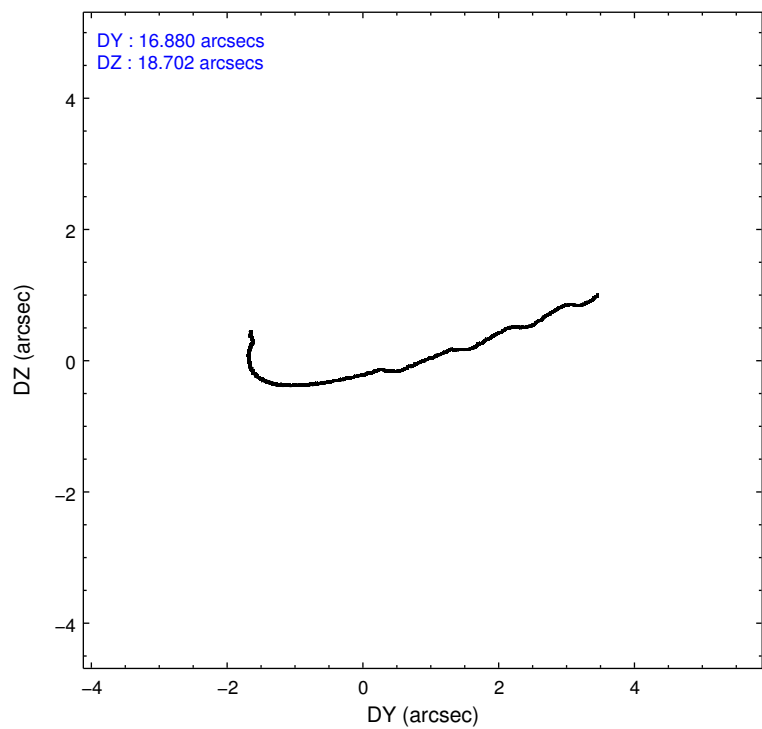
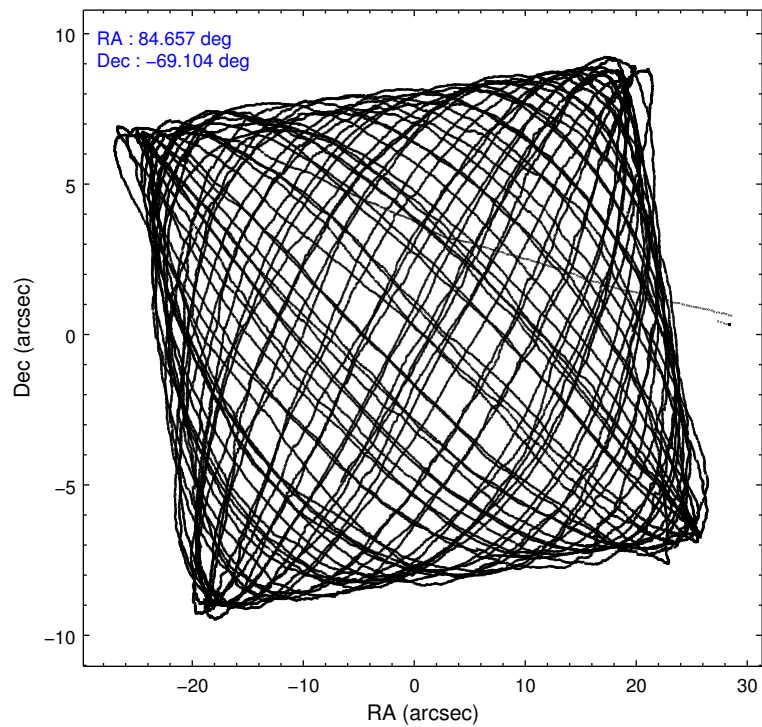
2.1.4 Events

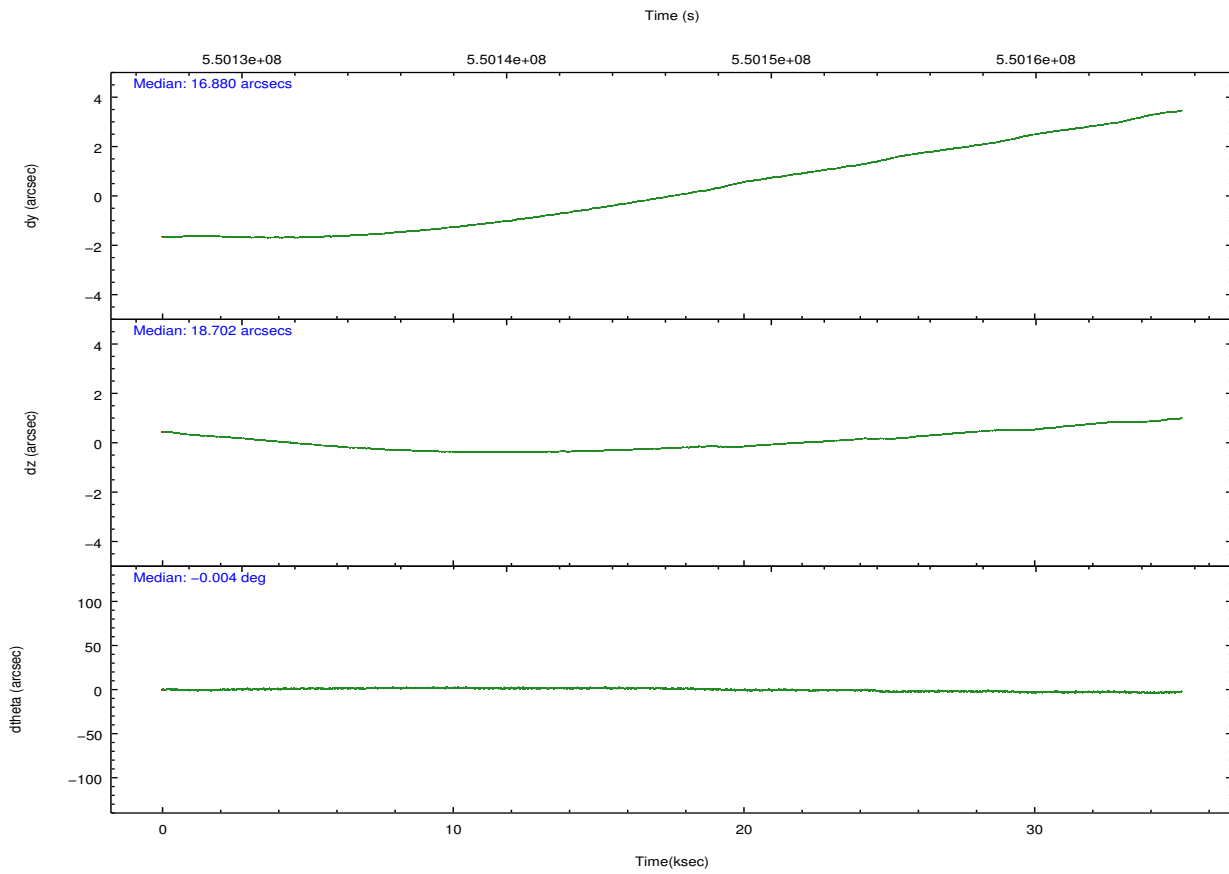
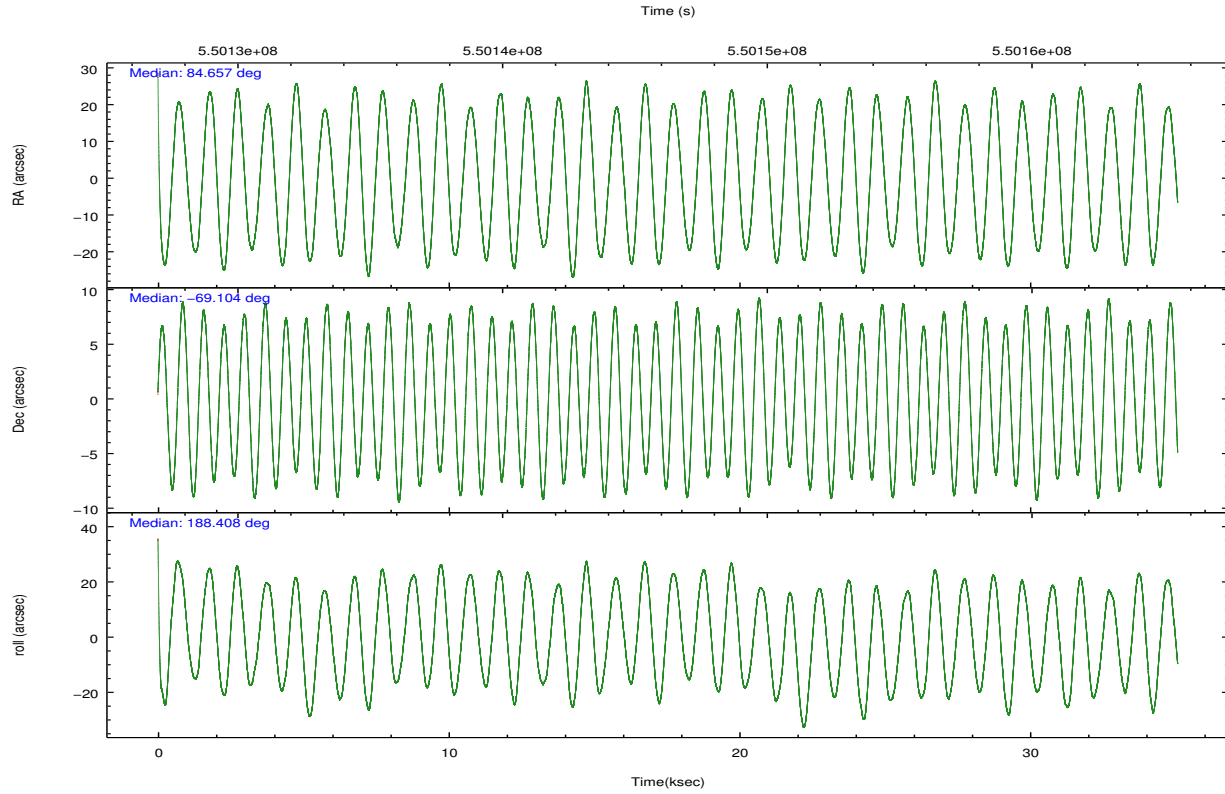
	ccd 0	ccd 1	ccd 2	ccd 3	ccd 6	ccd 7		ccd 0	ccd 1	ccd 2	ccd 3	ccd 6	ccd 7
level 1 events	153722	162874	195756	169701	178782	308608	grade 0 events	12096	13818	31556	18000	12692	39617
rejected events	128766	134868	147503	138700	152528	101874		7%	8%	16%	10%	7%	12%
rejected %	83%	82%	75%	81%	85%	33%	grade 1 events	91	119	287	170	106	417
								0%	0%	0%	0%	0%	0%
							grade 2 events	5359	5346	7435	5027	5164	50443
								3%	3%	3%	2%	2%	16%
							grade 3 events	2016	2343	2650	2033	2095	20870
								1%	1%	1%	1%	1%	6%
							grade 4 events	1892	2165	2772	2207	2081	21114
								1%	1%	1%	1%	1%	6%
							grade 5 events	6217	6918	5729	7367	7412	21086
								4%	4%	2%	4%	4%	6%
							grade 6 events	3594	4336	3846	3735	4223	74739
								2%	2%	1%	2%	2%	24%
							grade 7 events	122457	127829	141481	131162	145009	80322
								79%	78%	72%	77%	81%	26%

2.2 Compared Parameters

Parameter	Planned	Actual	Parameter	Planned	Actual
Instrument	ACIS	ACIS	Obspar format version number	7	7
Detector	ACIS-012367	ACIS-012367	Obspar file type	PREDICTED	ACTUAL
Grating	NONE	NONE	Obspar update status	NONE	UPDATED
Data mode	VFAINT	VFAINT	CCD I0 on	Y	Y
Observation mode	POINTING	POINTING	CCD I1 on	Y	Y
[deg] Pointing RA	84.716421	84.65600949421345	CCD I2 on	Y	Y
[deg] Pointing Dec	-69.087134	-69.10435559744603	CCD I3 on	Y	Y
[deg] Pointing Roll	188.259295	188.4115498442052	CCD S0 on	N	N
[mm] SIM focus pos	-0.782348	-0.7809083437167272	CCD S1 on	N	N
[mm] SIM defocus	0	0.001439871863259334	CCD S2 on	O1	Y
[mm] SIM translation stage pos	-233.592463	-233.5874344608287	CCD S3 on	O2	Y
[mm] SIM translation stage offset	0	-0.005018542100998502	CCD S4 on	N	N
[s] Observation start time (MET)	550128835.184000	550127474.1295	CCD S5 on	N	N
Observation start date	2015-06-08T05:32:48	2015-06-08T05:11:14	Number of optional ACIS chips dropped	0	0
[s] Observation end time (MET)	550163759.184000	550163996.93154	On-chip summing requested	N	N
Observation end date	2015-06-08T15:14:52	2015-06-08T15:19:56	Subarray requested	NONE	NONE
Read mode	TIMED	TIMED	Alternating exposures requested	N	N
			[s] Primary exposure time	0.000000	3.2

2.3 Aspect





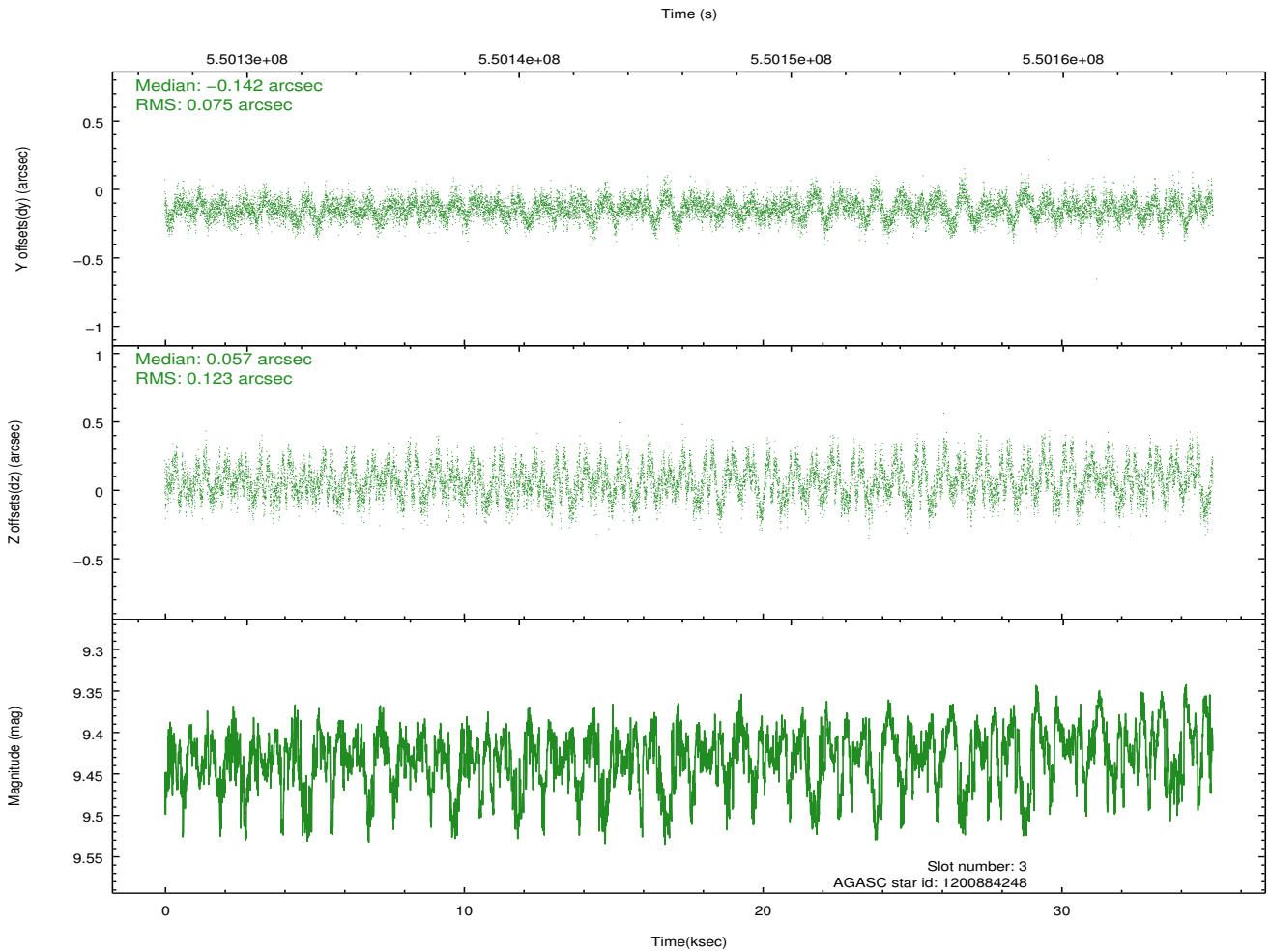
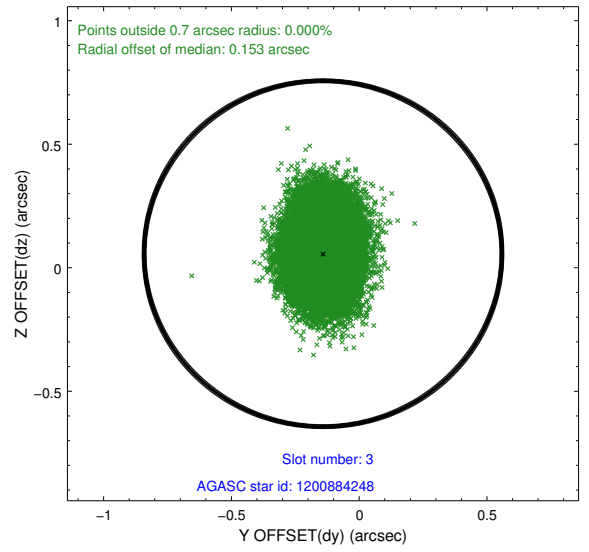
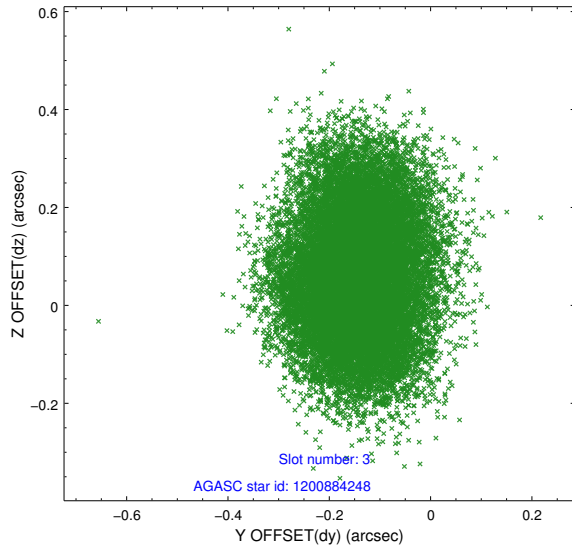
Slot Statistics

slot	status	used	id	mag	n_pts	med_dy	med_dz	dr1	dr2	ra	dec	mean_y	mean_z
0	FID		ACIS-I-1	7.08	8553	0.044	0.037	0.011	0.020	0.000000	0.000000	922.31	-842.42
1	FID		ACIS-I-5	7.07	8556	-0.270	0.042	0.027	0.036	0.000000	0.000000	-1826.15	1054.97
2	FID		ACIS-I-6	7.08	8555	0.135	-0.011	0.030	0.049	0.000000	0.000000	387.83	1699.54
3	GUIDE	used	1200884248	9.43	17098	-0.142	0.057	0.154	0.247	83.880915	-68.565170	819.21	-2009.88
4	GUIDE	used	1201016584	9.40	17083	0.321	0.109	0.198	0.312	85.677603	-68.415933	-1604.16	-2198.38
5	GUIDE	used	1201018384	9.03	17102	0.092	0.014	0.107	0.175	85.801362	-68.593260	-1664.19	-1542.24
6	GUIDE	used	1201020040	8.58	17105	-0.006	-0.064	0.102	0.167	85.379163	-68.879396	-956.87	-611.89
7	GUIDE	used	1200885760	9.42	17097	-0.265	-0.122	0.134	0.212	83.723637	-68.777667	1122.16	-1277.54

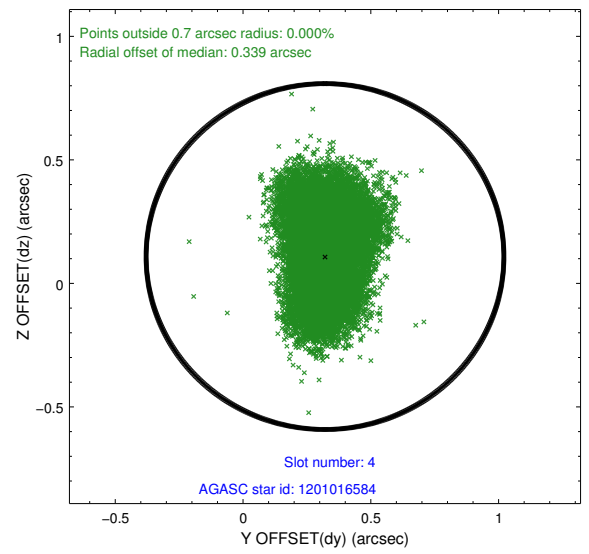
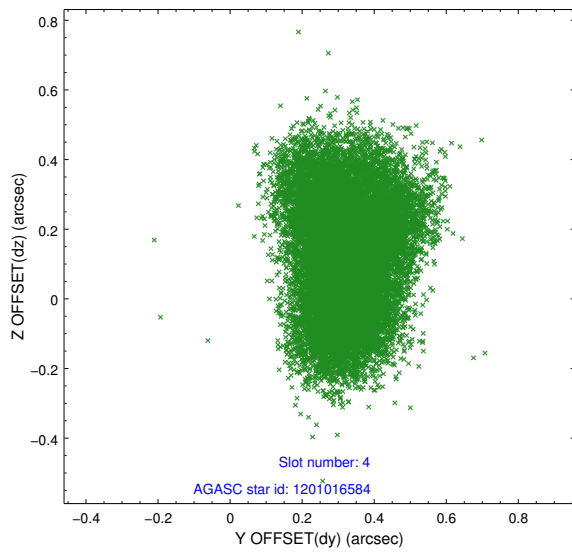
∞

2.4 Star Slots

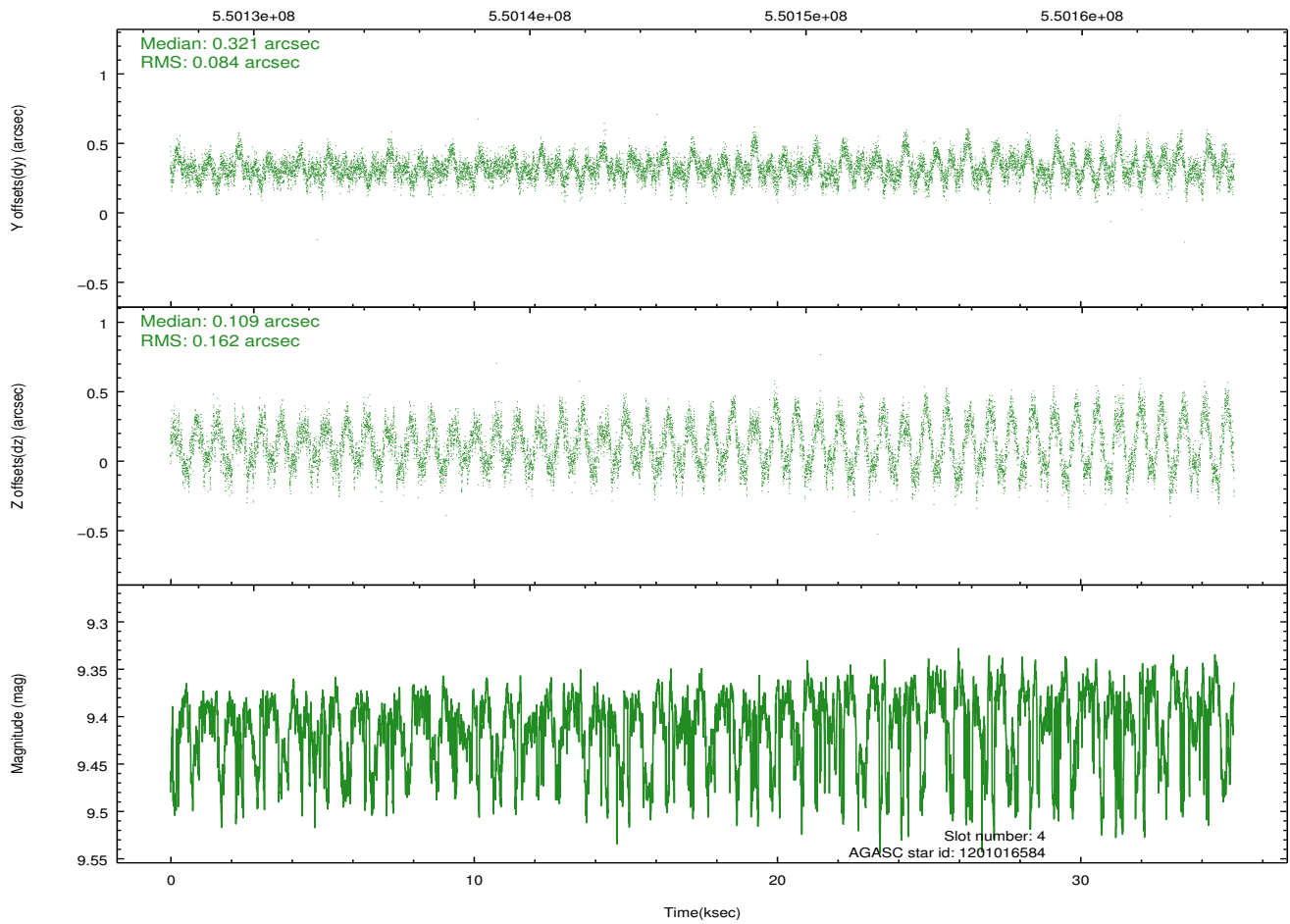
2.4.1 Slot 3



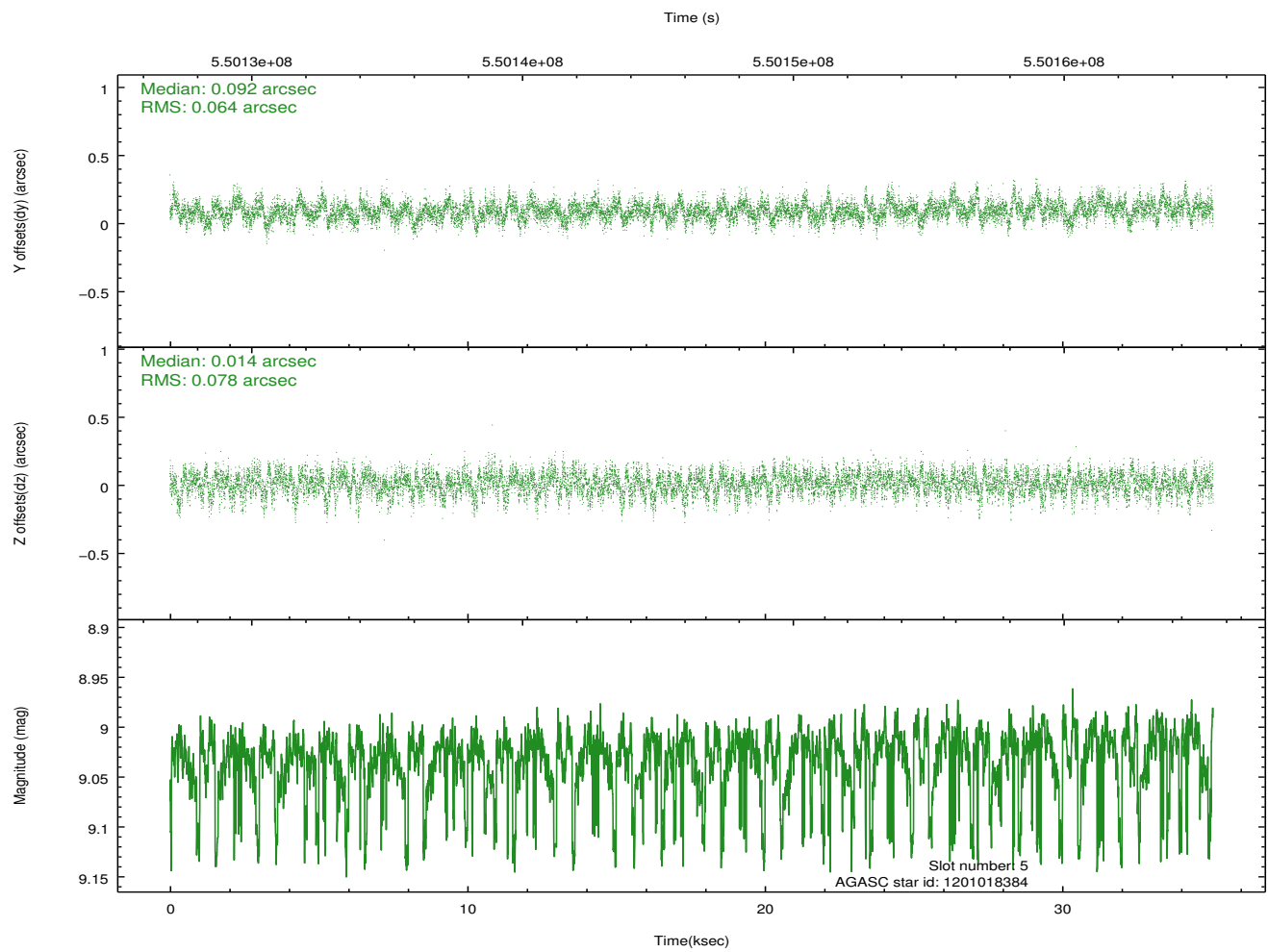
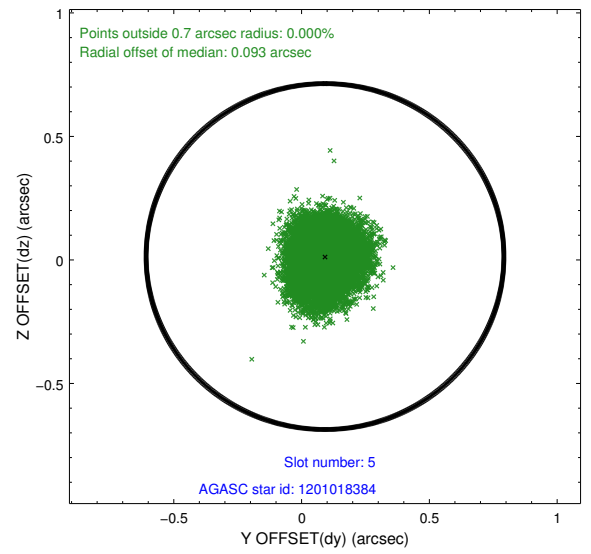
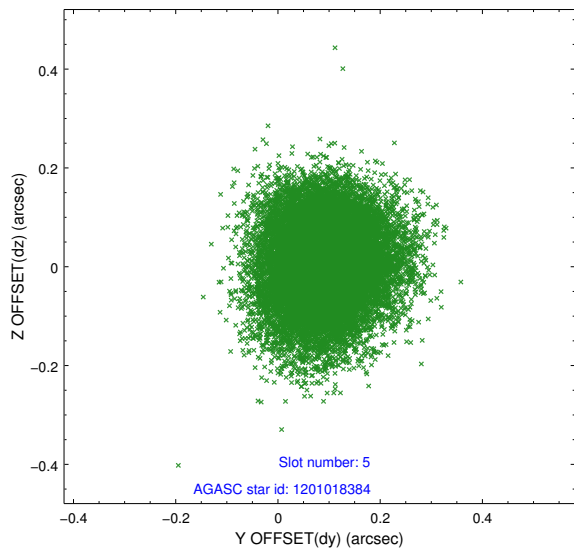
2.4.2 Slot 4



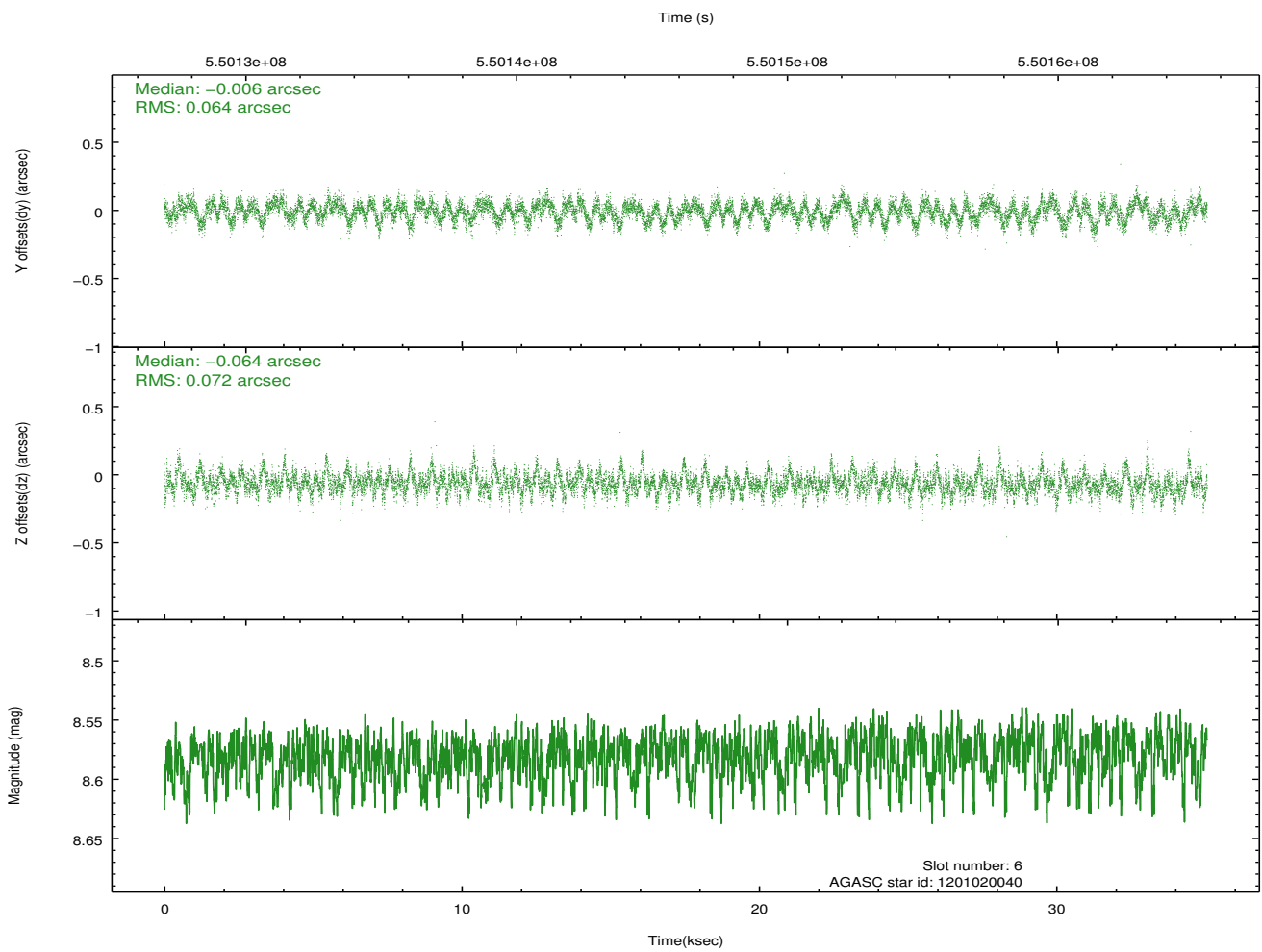
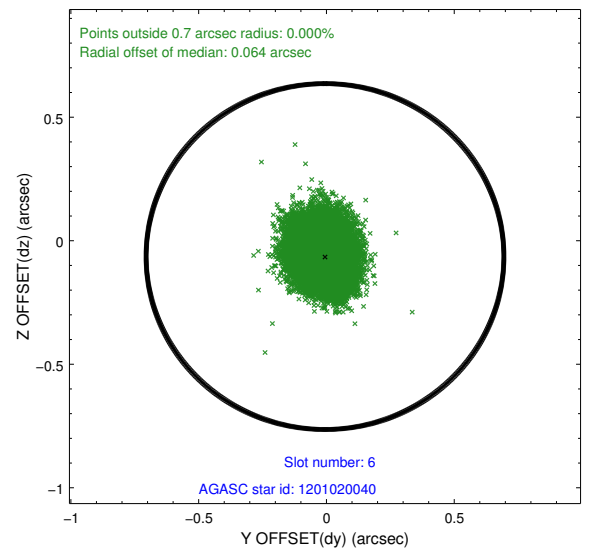
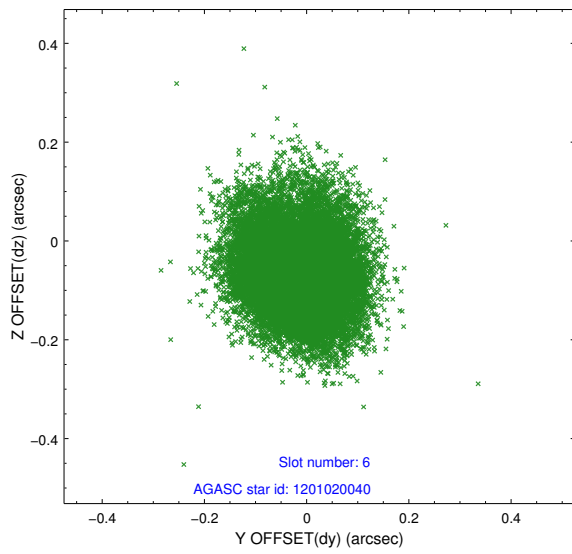
Time (s)



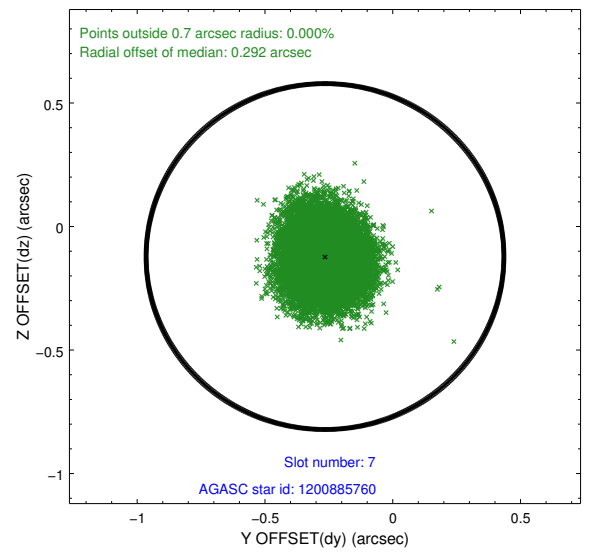
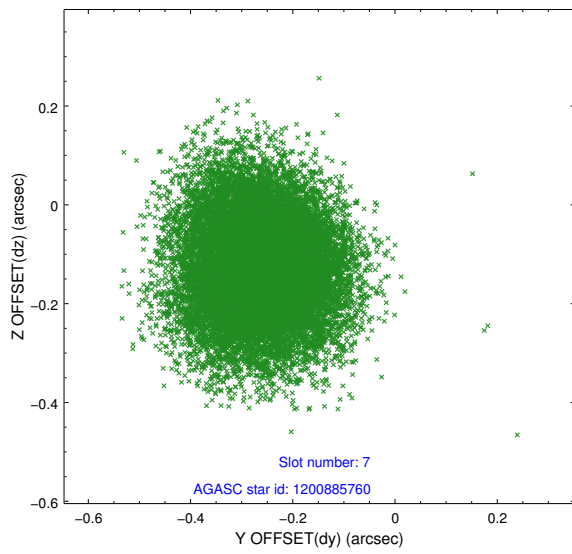
2.4.3 Slot 5



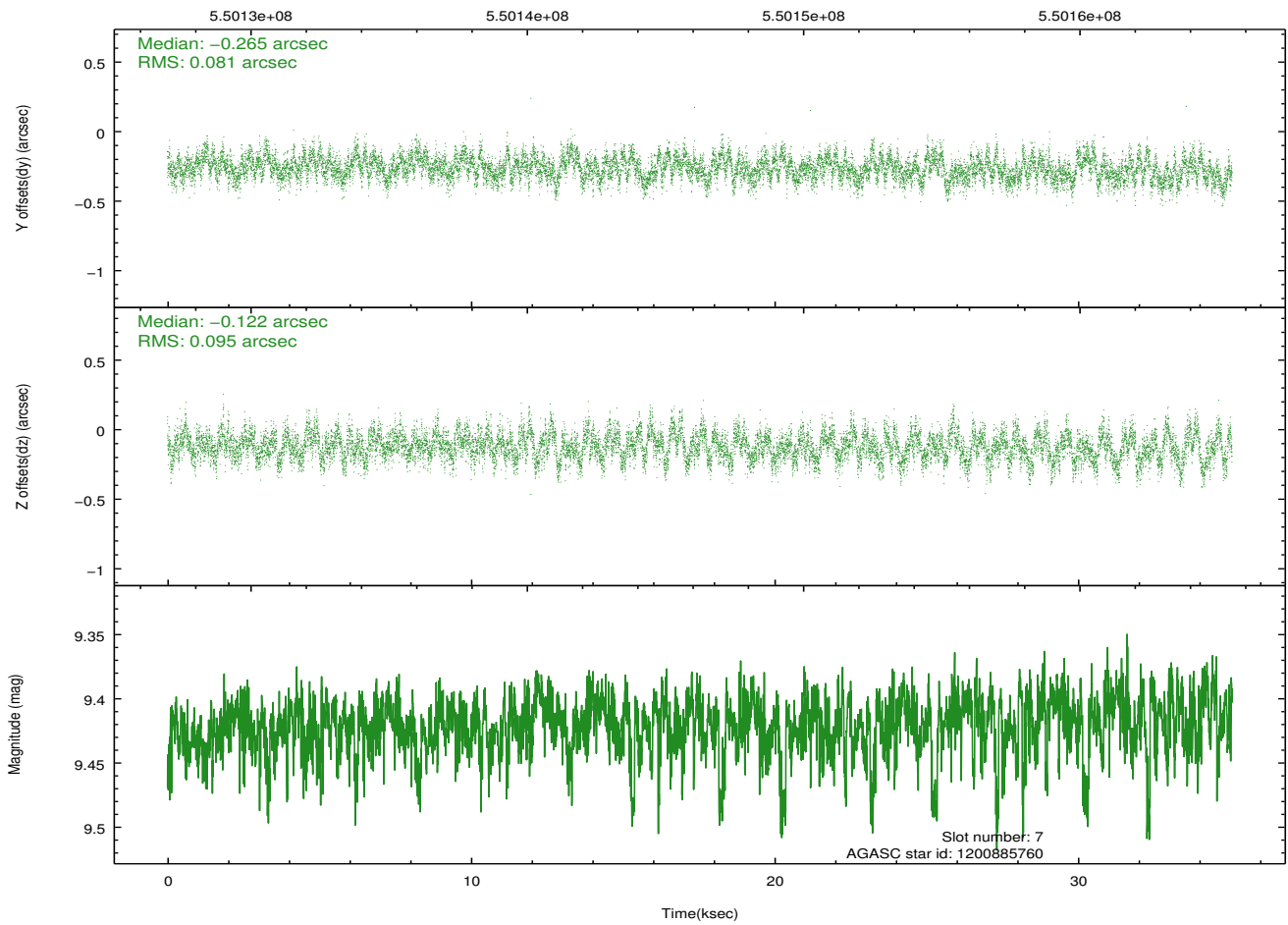
2.4.4 Slot 6



2.4.5 Slot 7

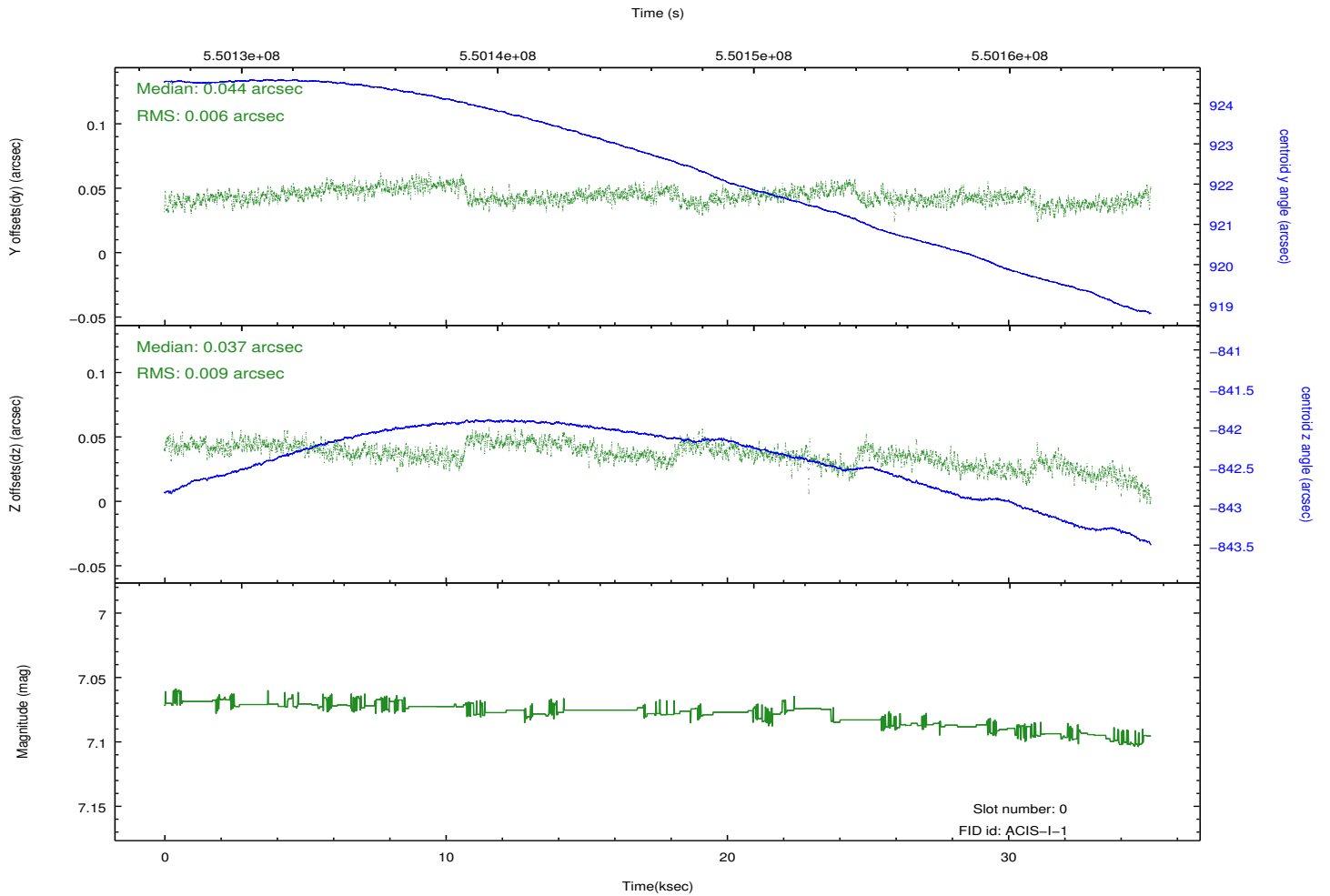
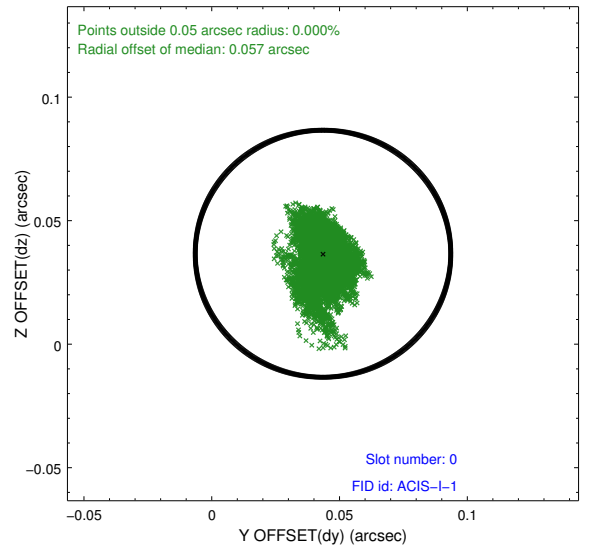
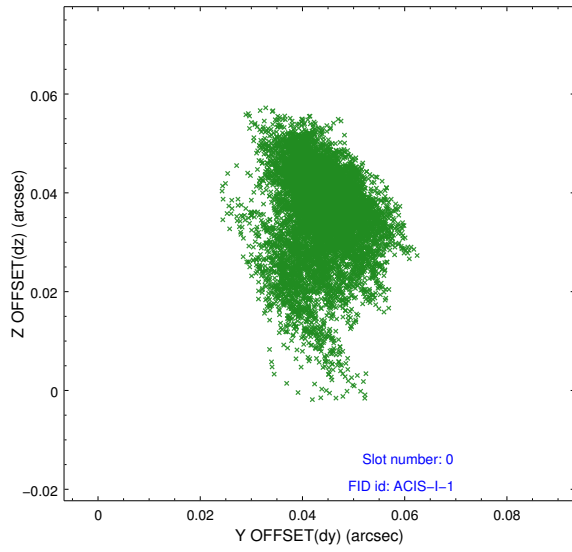


Time (s)

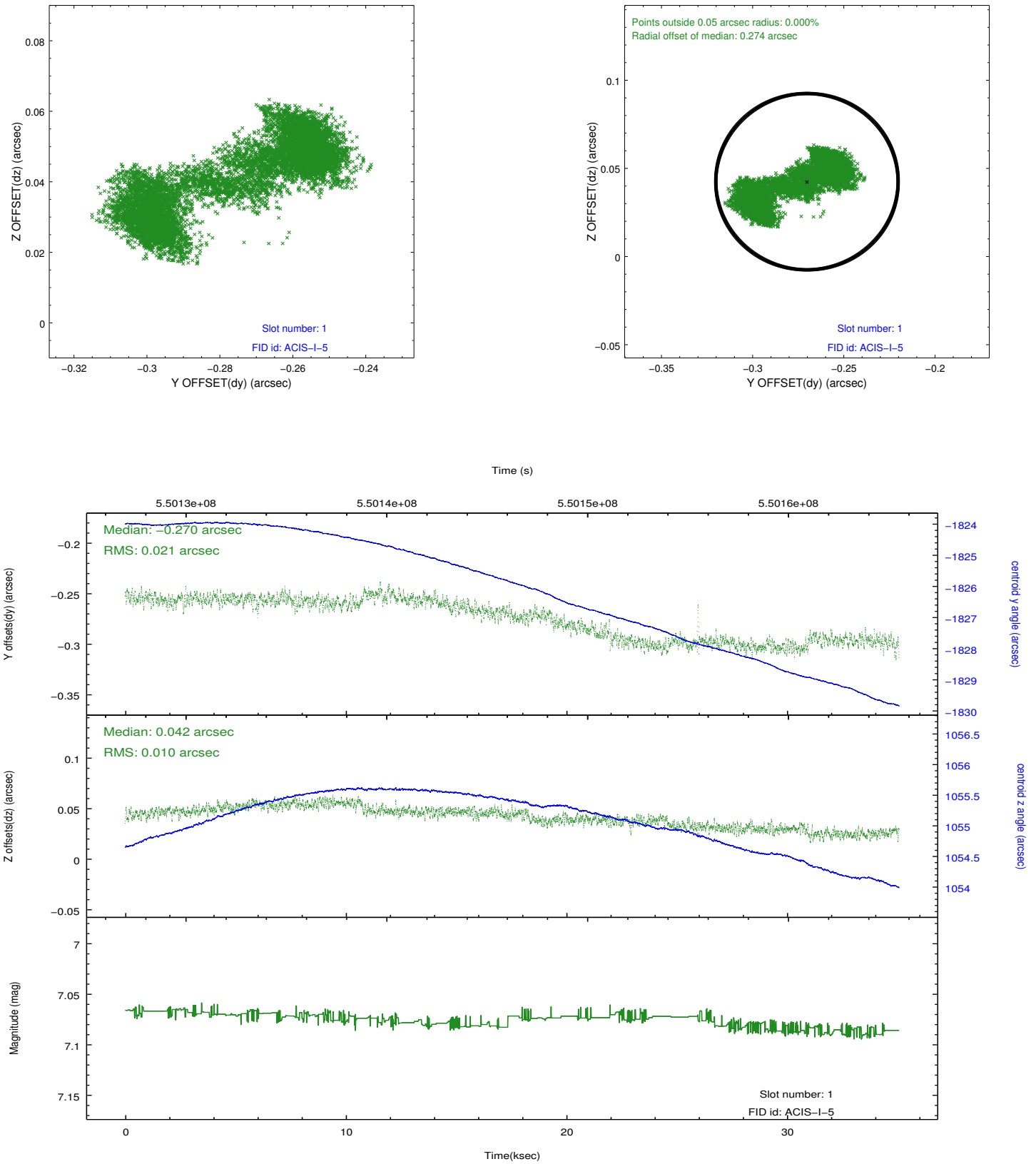


2.5 FID Slots

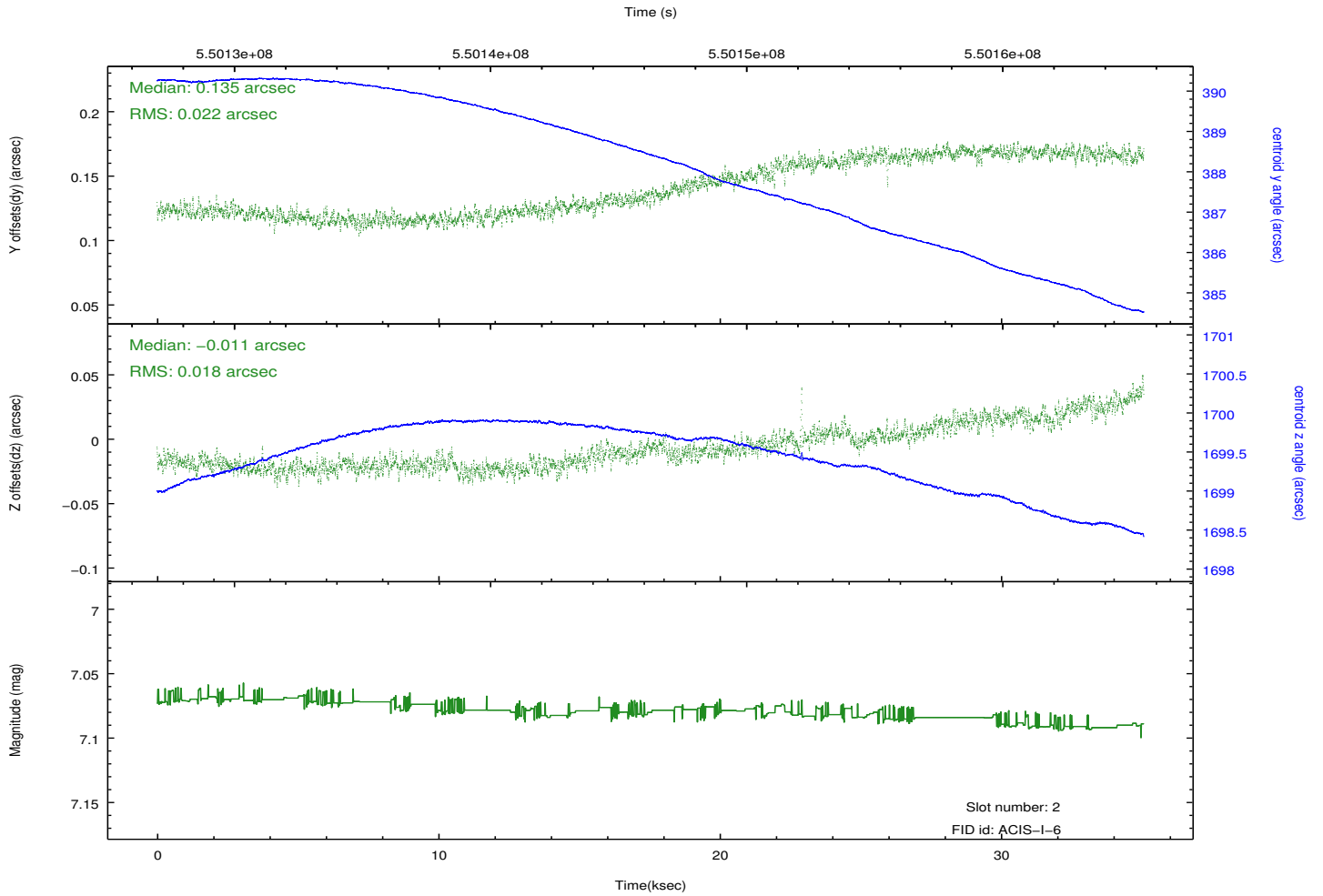
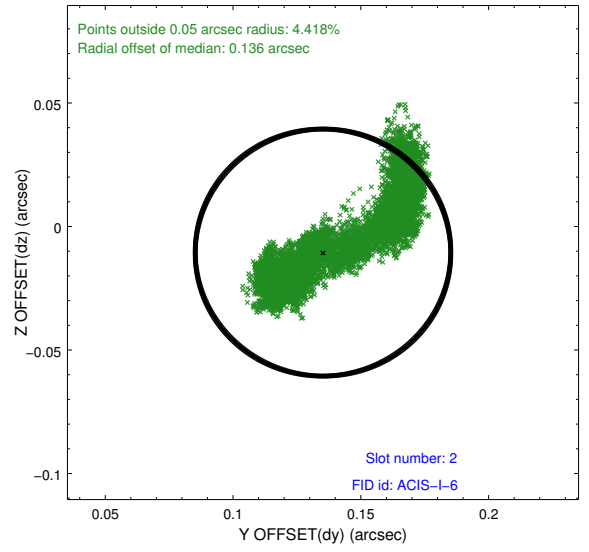
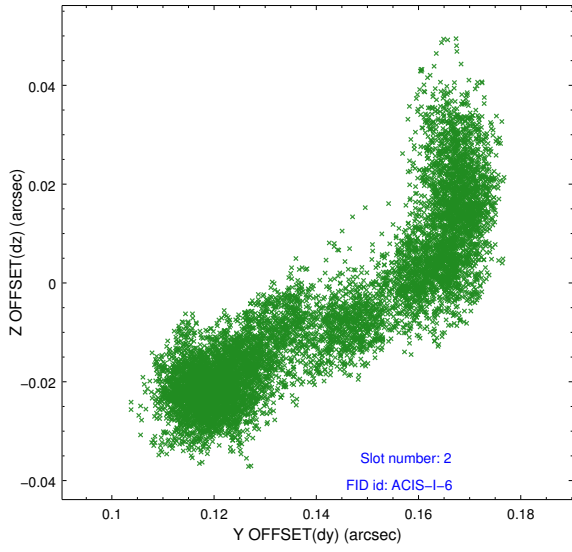
2.5.1 Slot 0



2.5.2 Slot 1



2.5.3 Slot 2



A Summary

A.1 Status

V&V Scientist	Joy Nichols
V&V Date (YYYY-MM-DD)	2015.06.09
V&V Edition	1
V&V Disposition and Status	OK
V&V Charge Time	34.879199006796

A.2 Comments