

V&V Reference Report

L2 ASCDS Version : 8.4.5

Observation 1862 - L2 Version 6
Chandra X-Ray Center

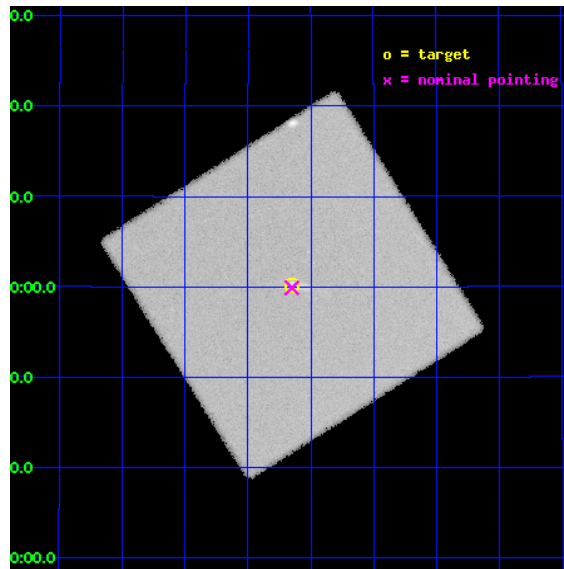
L2 Processing Date : Sep 5 2012

Contents

1	Front	2
2	OBI	3
2.1	OBI	3
2.1.1	Images	3
2.1.2	Parameters	4
2.1.3	Events	4
2.2	Compared Parameters	5
2.3	Aspect	6
2.4	Star Slots	9
2.4.1	Slot 3	9
2.4.2	Slot 4	10
2.4.3	Slot 5	11
2.4.4	Slot 6	12
2.4.5	Slot 7	13
2.5	FID Slots	14
2.5.1	Slot 0	14
2.5.2	Slot 1	15
2.5.3	Slot 2	16
A	Summary	17
A.1	Status	17
A.2	Comments	17

1 Front

seq_num	100020	Sequence number
obs_id	1862	Observation id
title	THE MORPHOLOGY OF JOVIAN X-RAYS AND SUPPORT OF THE CASSINI FLYBY OF JUPITER	Proposal title
observer	Dr. G. Gladstone	Principal investigator
object	JUPITER	Source name
ra_targ	61.663333	Observer's specified target RA [deg]
dec_targ	20.002403	Observer's specified target Dec [deg]
ra_nom	61.66253630411	Nominal RA [deg]
dec_nom	19.998085198112	Nominal Dec [deg]
roll_nom	282.85878185758	Nominal Roll [deg]
revision	6	Processing version of data
ontime	35981.857626051	[s]
livetime	35818.783738557	Ontime multiplied by DTCOR
l2events	820053	Number of level 2 events

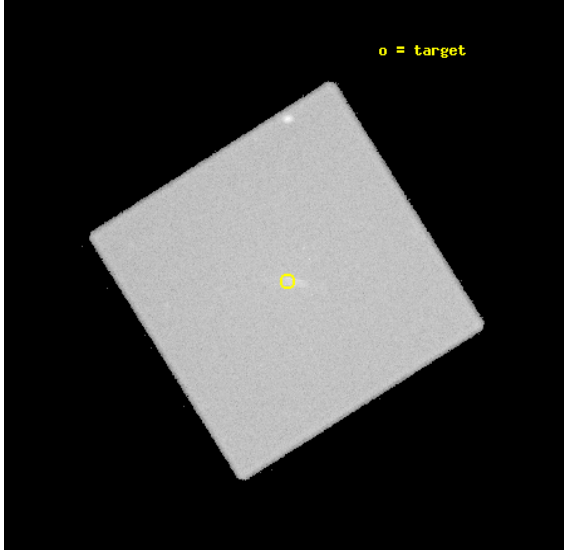


2 OBI

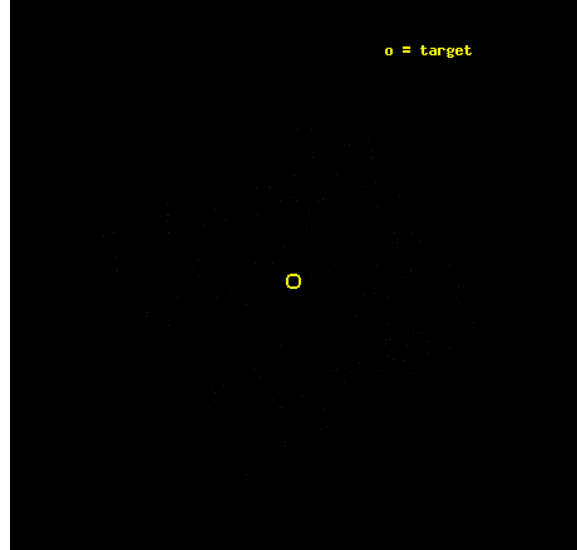
2.1 OBI

2.1.1 Images

Level 1 Image



Level 1 Bad Events



2.1.2 Parameters

obi_num	0	Obi number	sched_exp_time	36000.000000	[s] Scheduled observation exposure time
ascdsver	8.4.5	Processing system revision	ontime	35981.857626051	[s]
caldbver	4.5.1.1	 	l1events	1229999	Number of level 1 events
date	2012-09-05T03:04:24	Date and time of file creation			
revision	5	Processing version of data			

2.1.3 Events

Level 1 Events

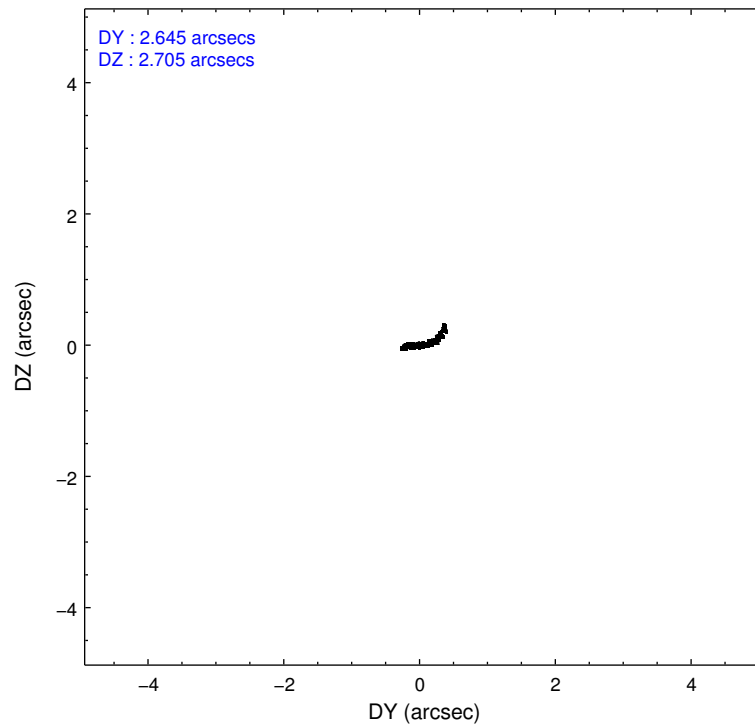
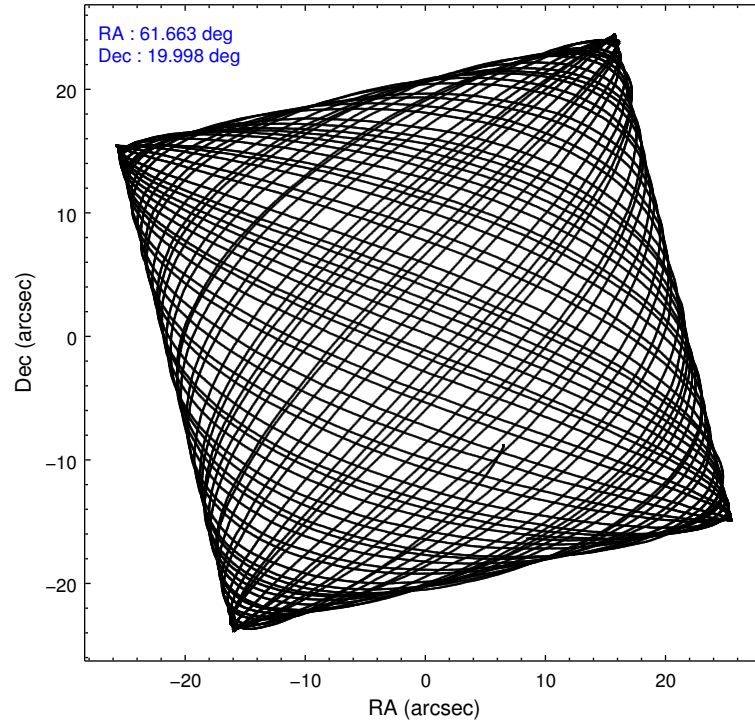
	segment 0
level 1 events	1229999
rejected events	3470
rejected %	0%

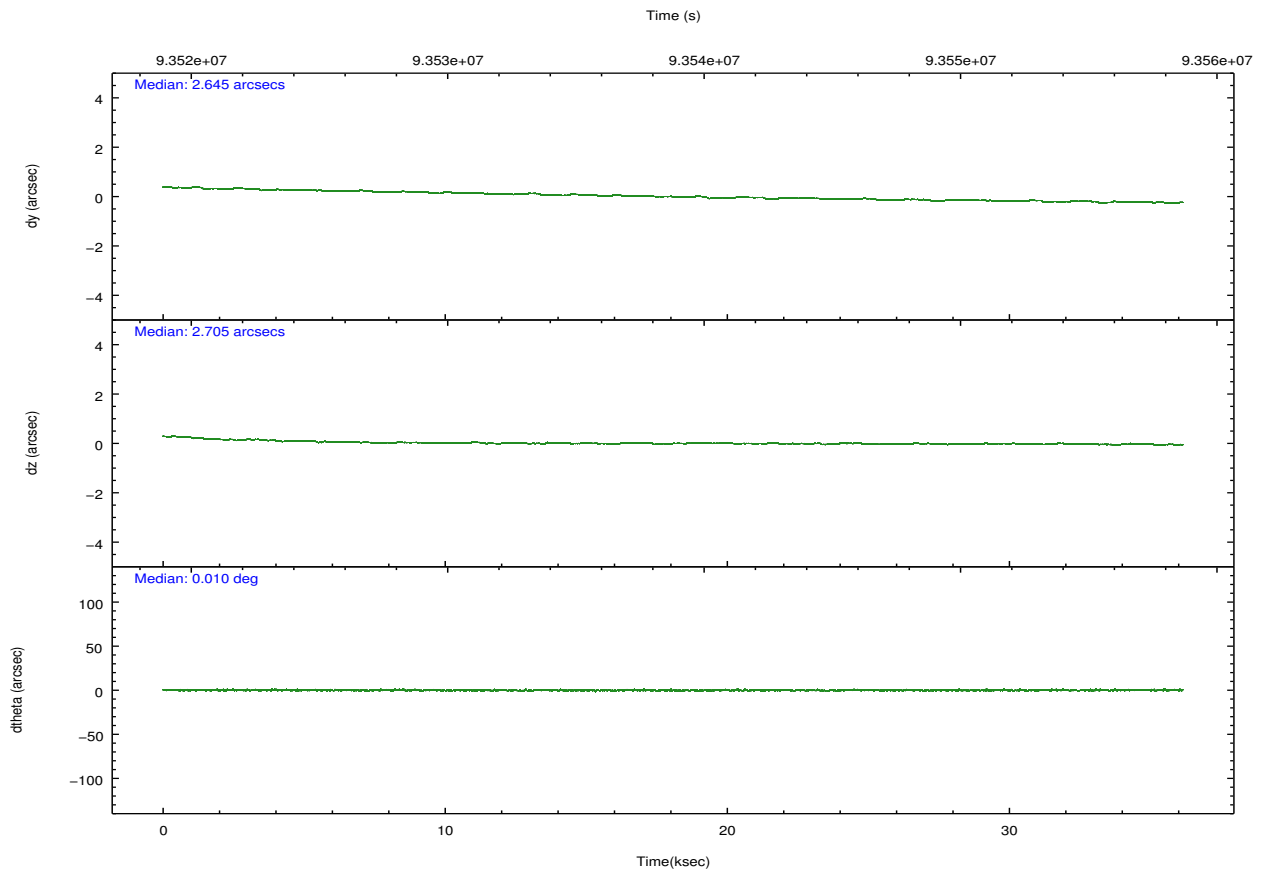
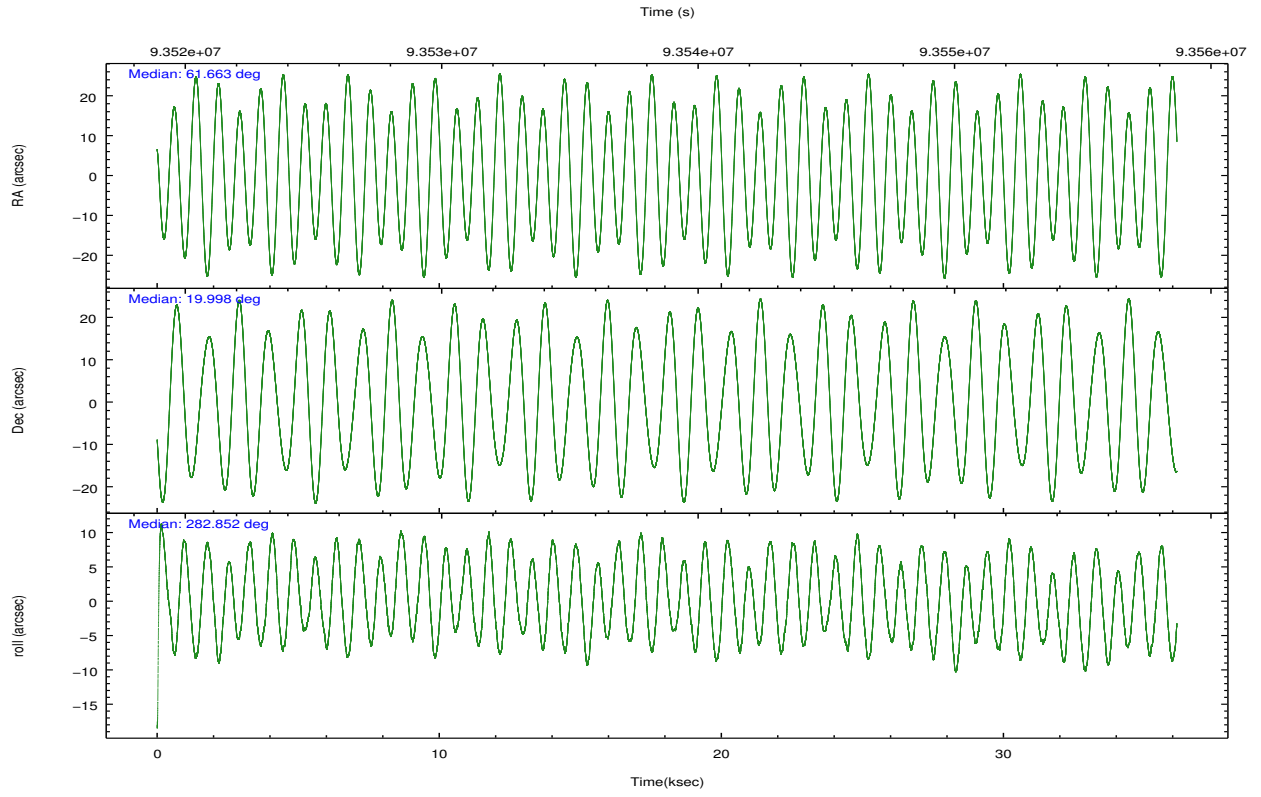
2.2 Compared Parameters

Parameter	Planned	Actual
Instrument	HRC	HRC
Detector	HRC-I	HRC-I
Grating	NONE	NONE
Data mode	OBSERVING	OBSERVING
Observation mode	POINTING	POINTING
[deg] Pointing RA	61.642473	61.66253630410954
[deg] Pointing Dec	20.017733	19.99808519811187
[deg] Pointing Roll	282.961140	282.8587818575772
[s] Window start time (MET)	93520864.184000	93520864.184000
[s] Window stop time (MET)	93556864.184000	93556864.184000
[mm] SIM focus pos	-1.040293	-1.038866356238299
[mm] SIM defocus	0	0.001426264420575141
[mm] SIM translation stage pos	126.985494	126.9829799899862
[mm] SIM translation stage offset	0	0.002508901615314585
[s] Observation start time (MET)	93520864.184000	93520467.156339
Observation start date	2000-12-18T10:00:00	2000-12-18T09:54:27
[s] Observation end time (MET)	93556864.184000	93557389.195251
Observation end date	2000-12-18T20:00:00	2000-12-18T20:09:49

Parameter	Planned	Actual
Obspar format version number	7	7
Obspar file type	PREDICTED	ACTUAL
Obspar update status	NONE	UPDATED

2.3 Aspect



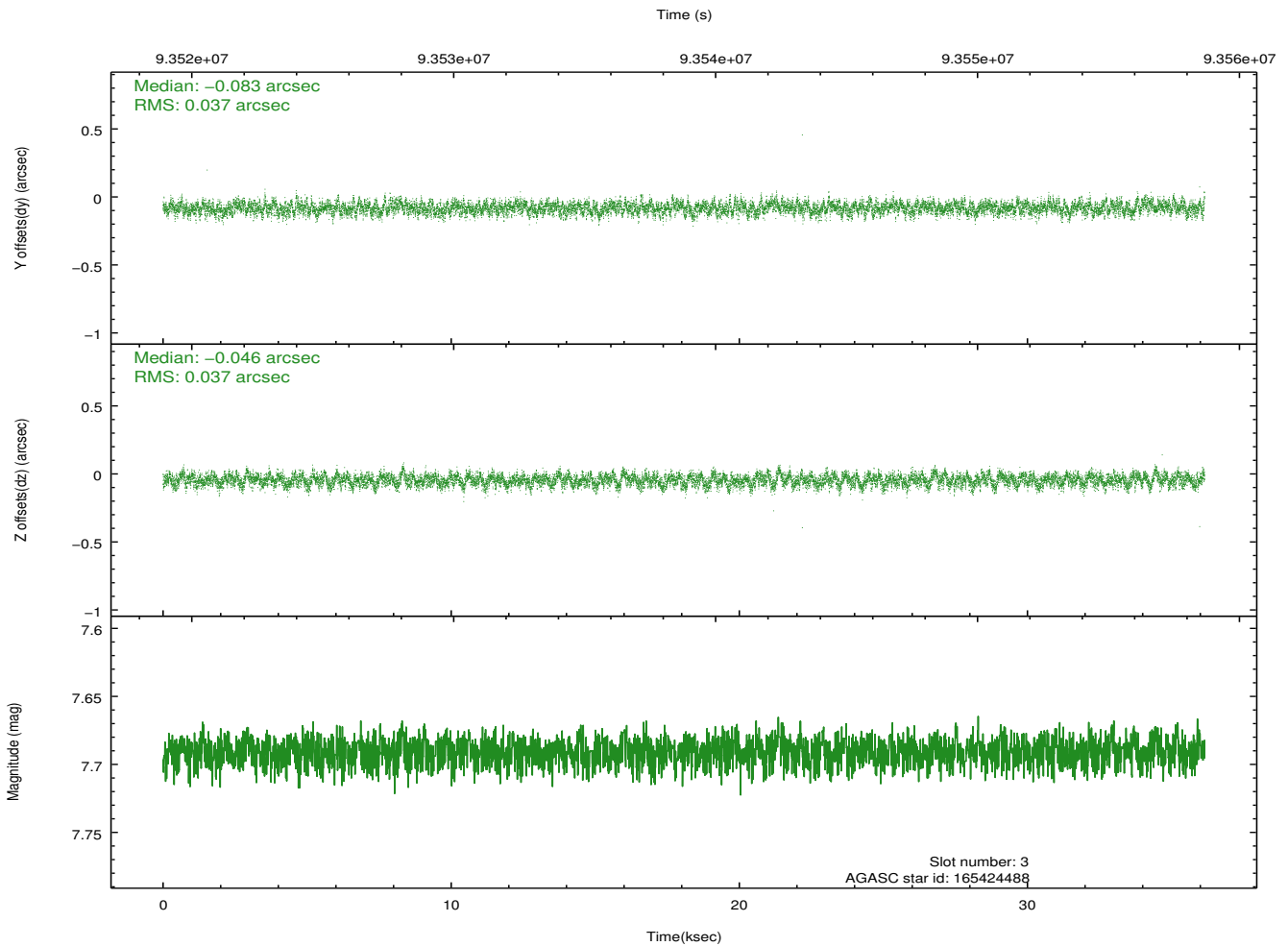
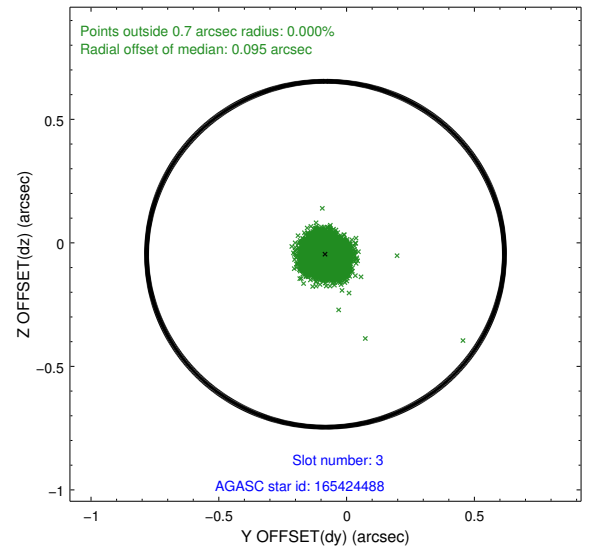
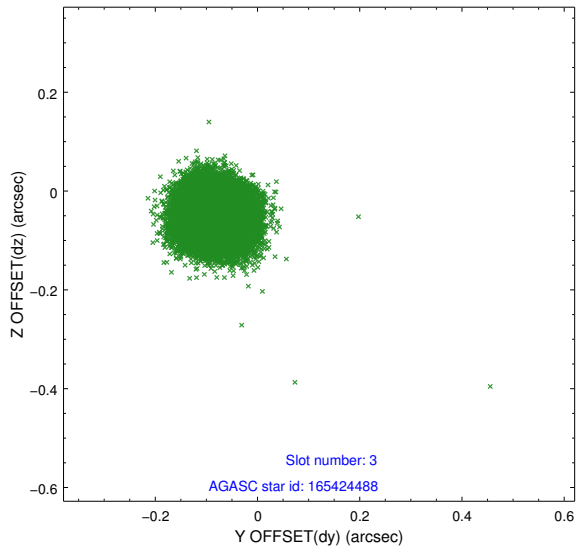


Slot Statistics

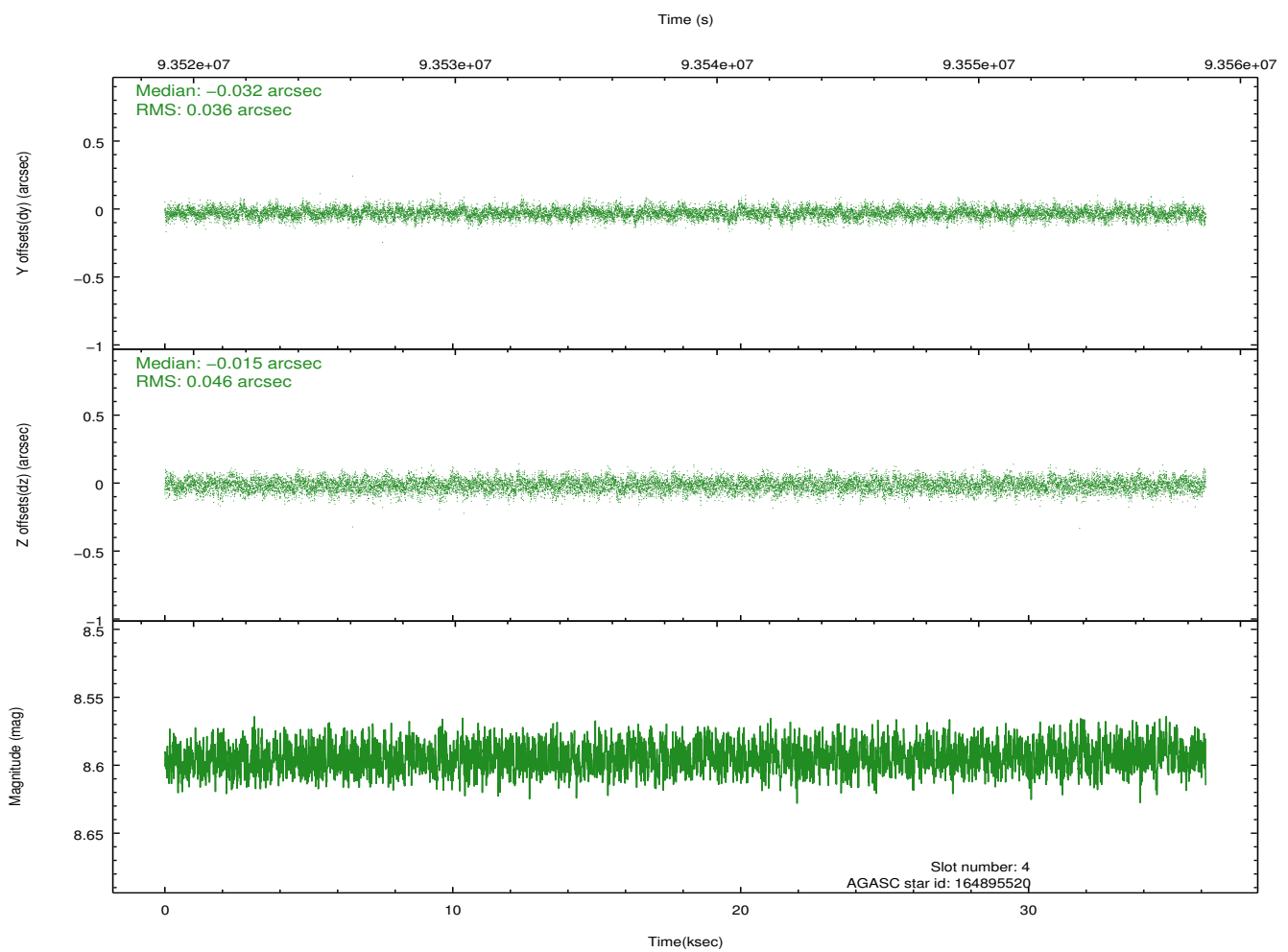
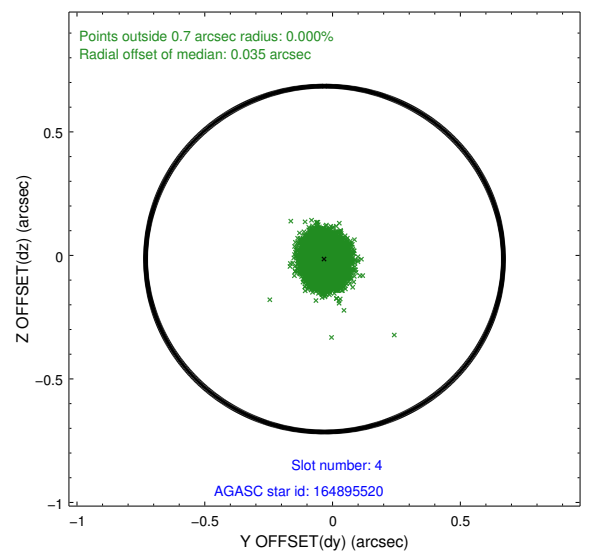
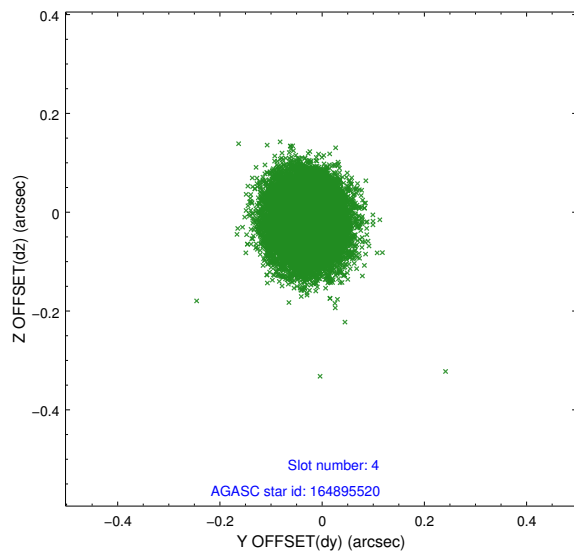
slot	status	id	mag	n_pts	med_dy	med_dz	dr1	dr2	ra	dec	mean_y	mean_z
0	FID	HRC-I-1	6.97	8816	0.073	0.013	0.006	0.011	0.000000	0.000000	-758.11	-1290.41
1	FID	HRC-I-3	7.05	8817	0.003	-0.031	0.009	0.014	0.000000	0.000000	-1186.68	1013.98
2	FID	HRC-I-4	6.99	8817	0.038	-0.071	0.007	0.011	0.000000	0.000000	1284.59	1011.72
3	GUIDE	165424488	7.69	17633	-0.083	-0.046	0.056	0.088	61.549381	20.668253	-2352.89	219.07
4	GUIDE	164895520	8.59	17631	-0.032	-0.015	0.062	0.100	61.309800	20.139312	-680.00	-997.73
5	GUIDE	164888752	8.86	17627	0.086	0.060	0.072	0.119	61.568386	19.874602	445.78	-360.25
6	GUIDE	164890352	9.02	17623	-0.025	0.020	0.092	0.148	61.028629	19.972872	-312.09	-2059.74
7	GUIDE	165021720	9.58	17626	0.056	-0.017	0.117	0.189	62.234537	20.170723	-91.81	2073.60

2.4 Star Slots

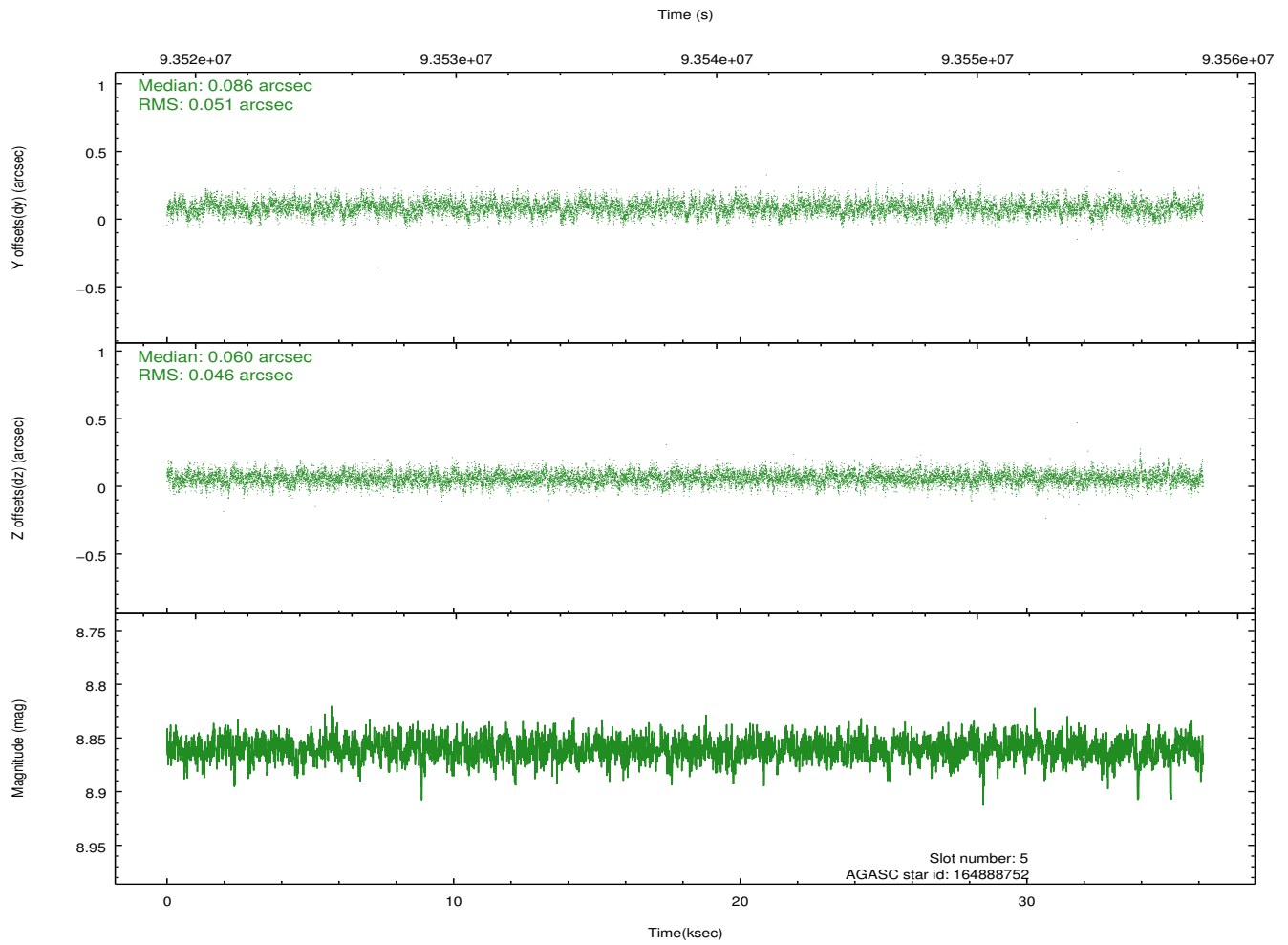
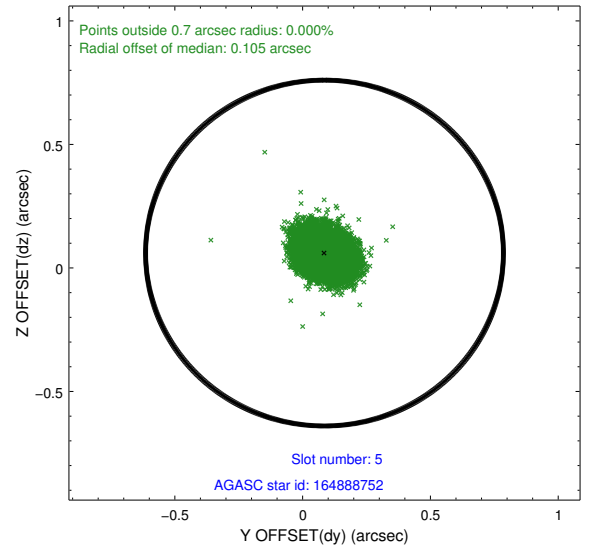
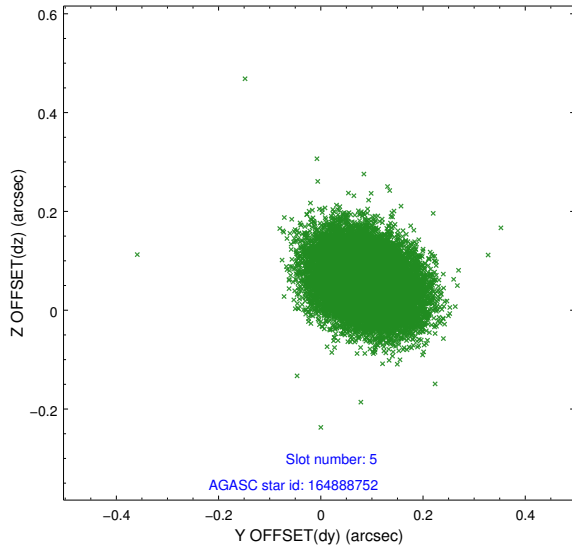
2.4.1 Slot 3



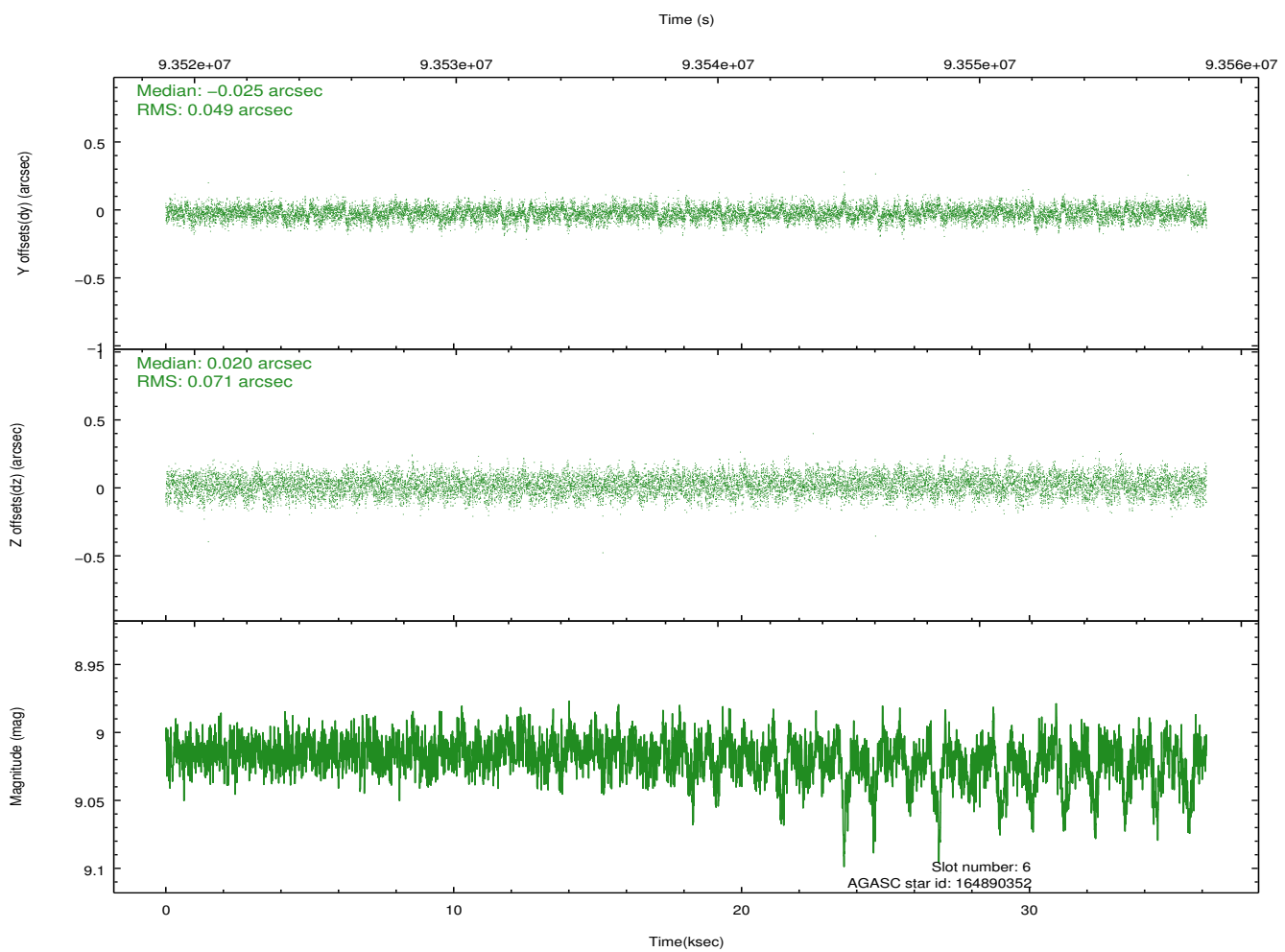
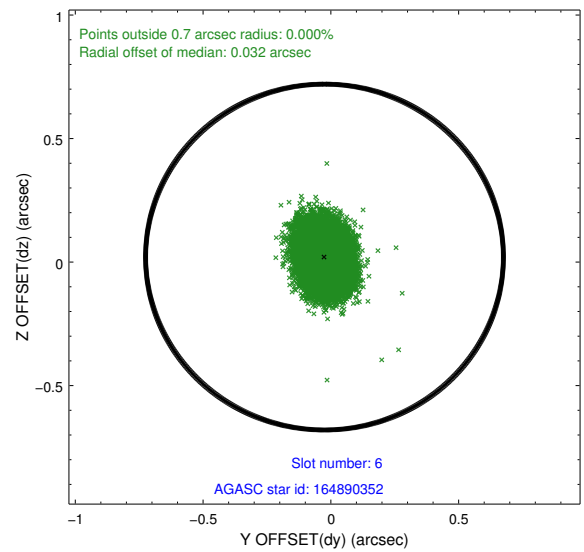
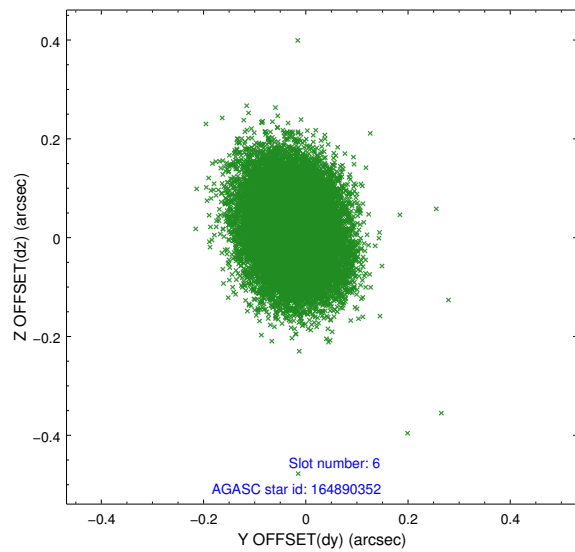
2.4.2 Slot 4



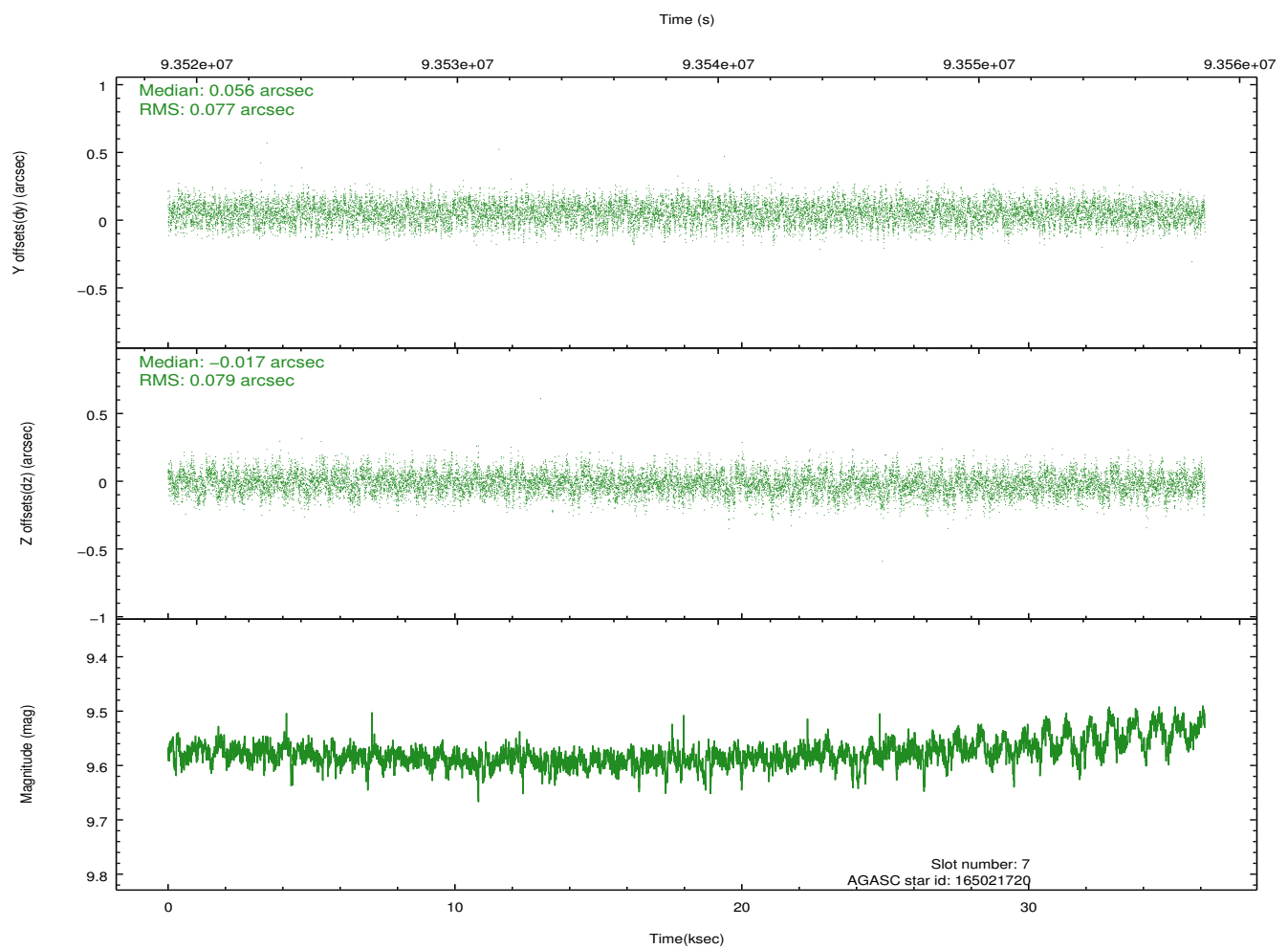
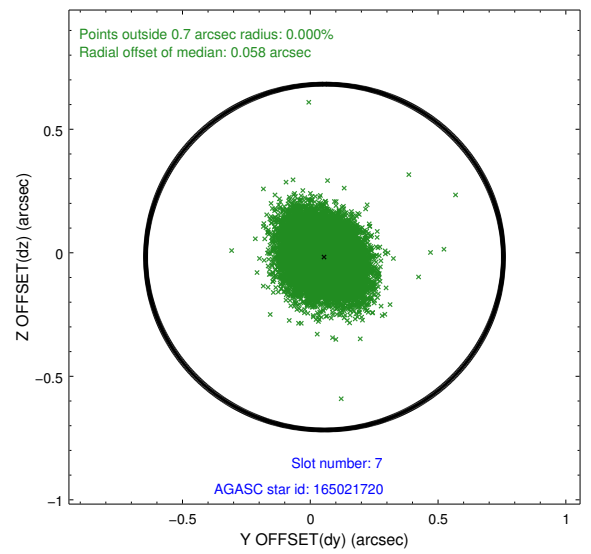
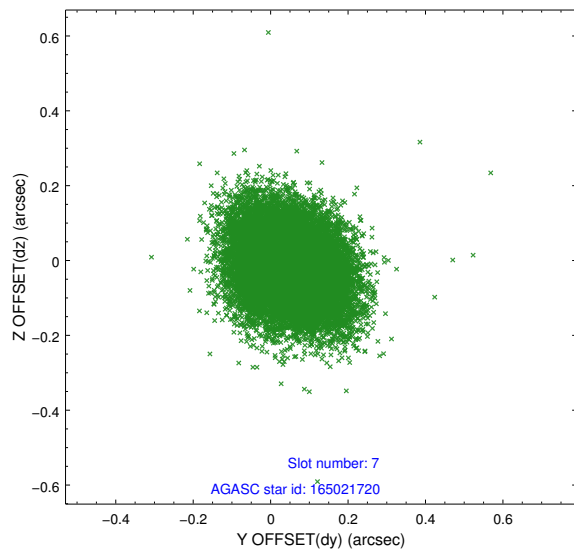
2.4.3 Slot 5



2.4.4 Slot 6

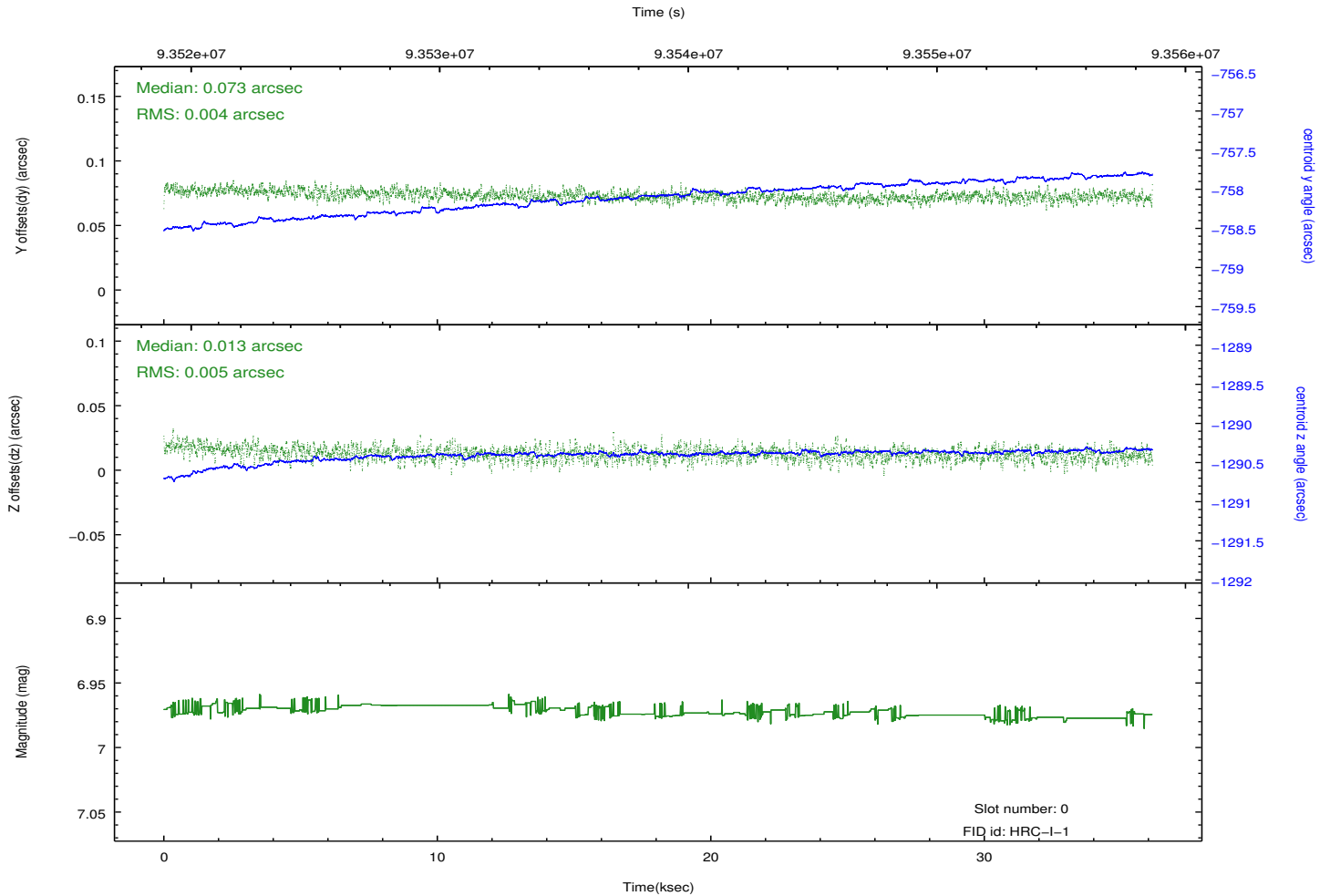
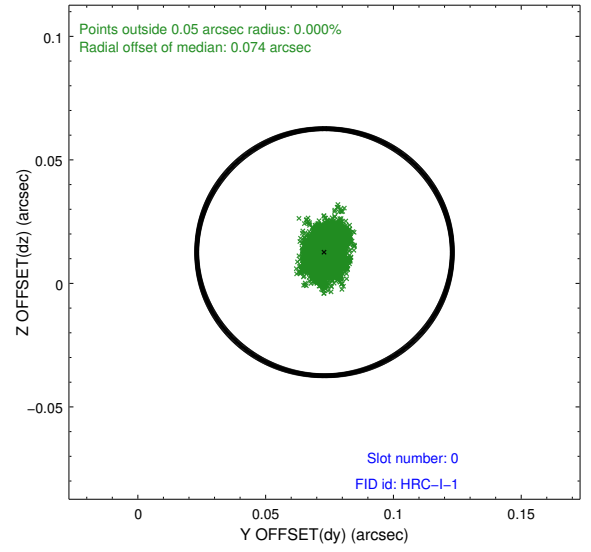
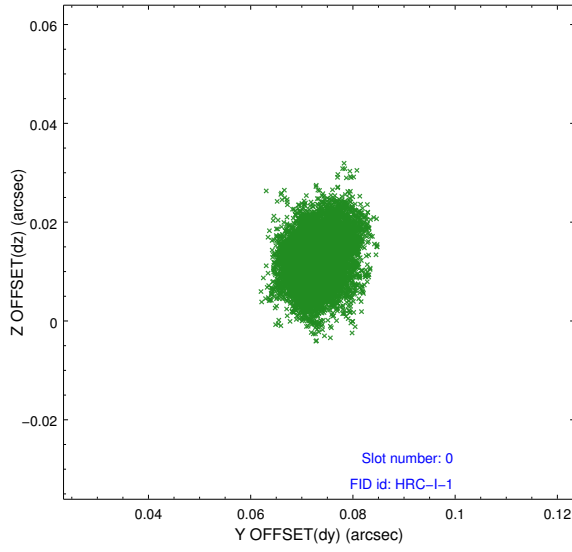


2.4.5 Slot 7

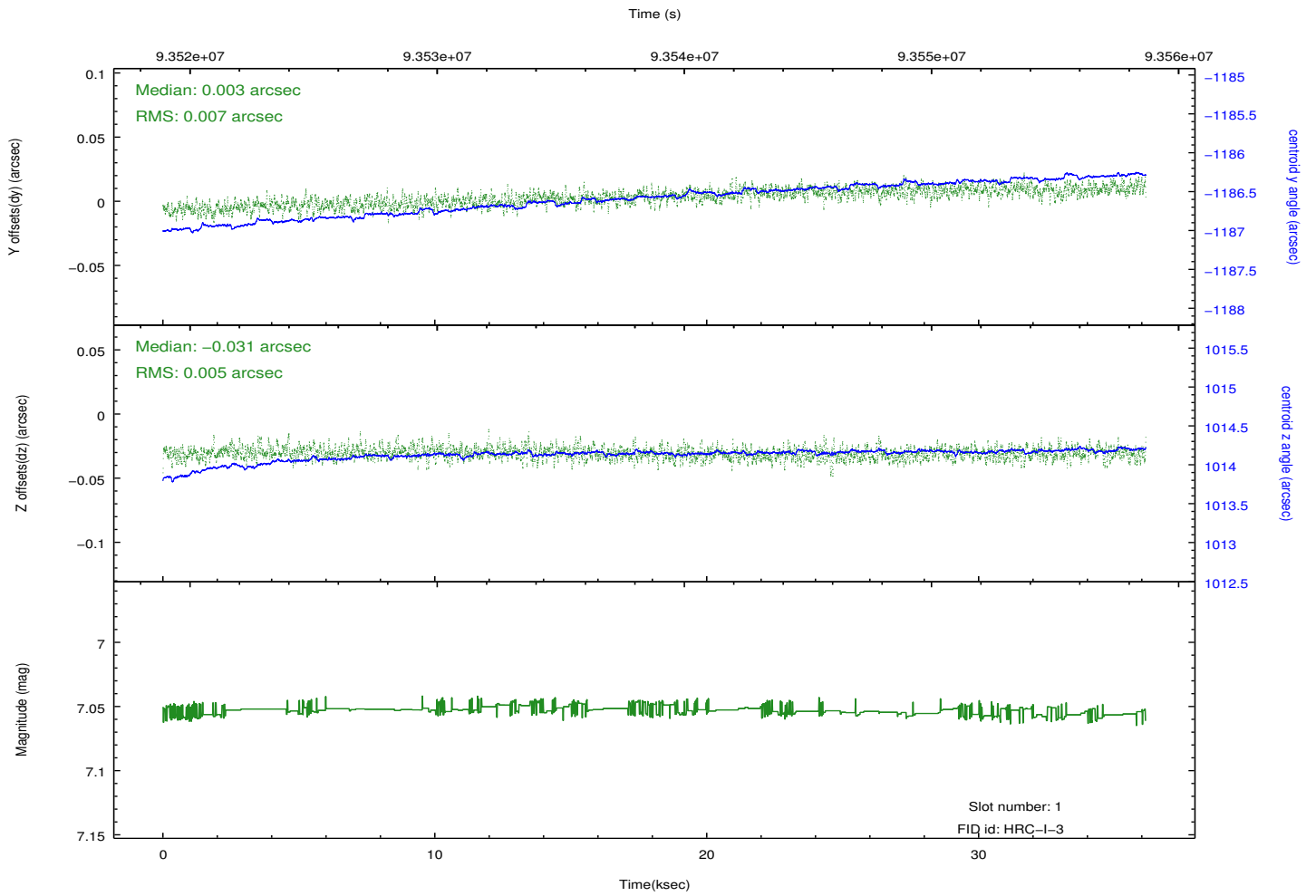
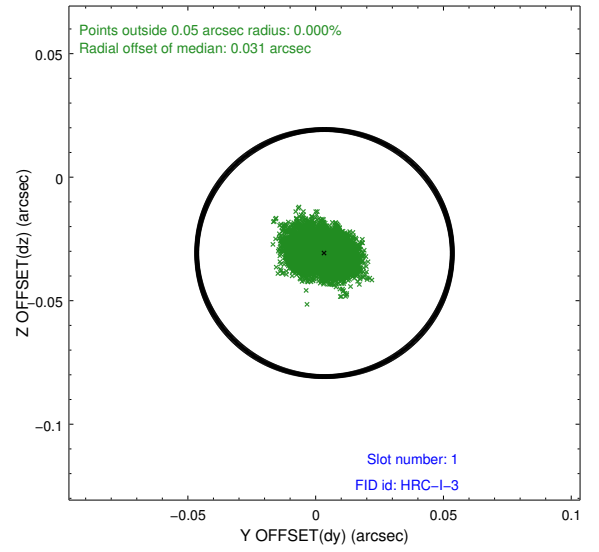
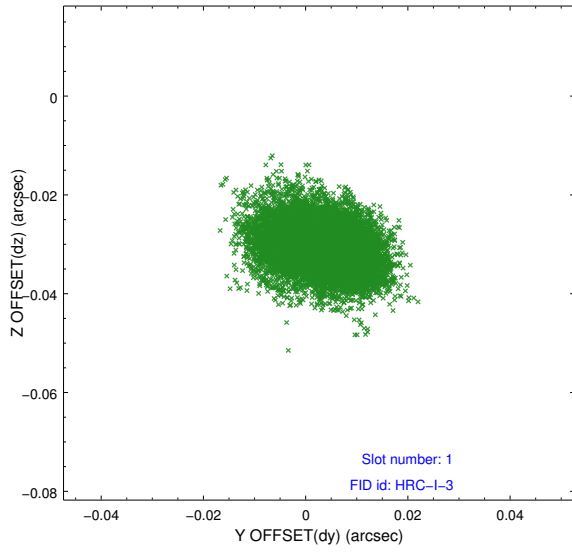


2.5 FID Slots

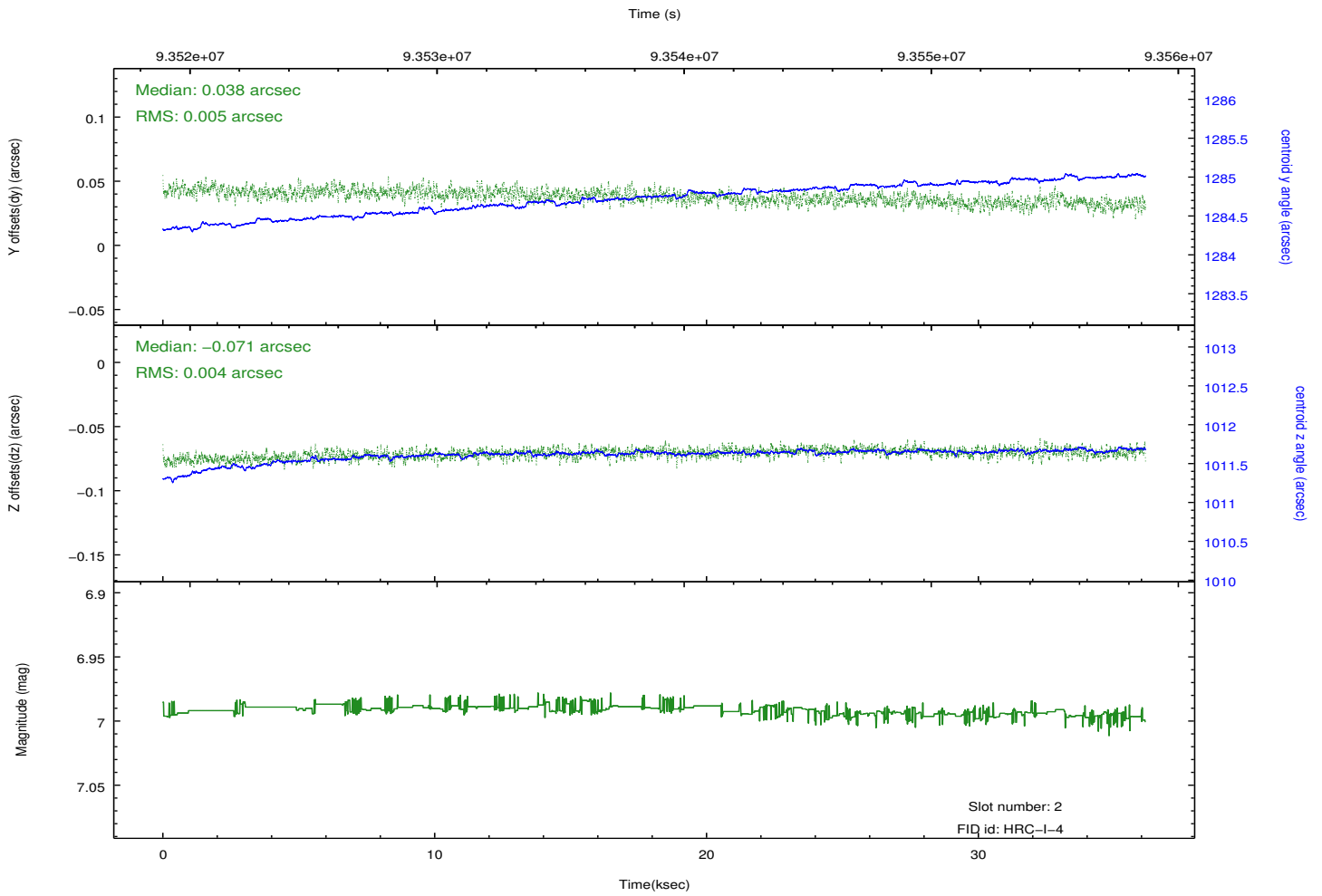
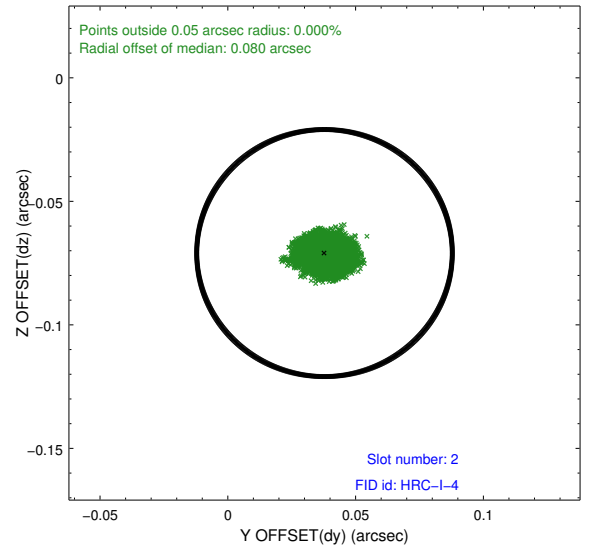
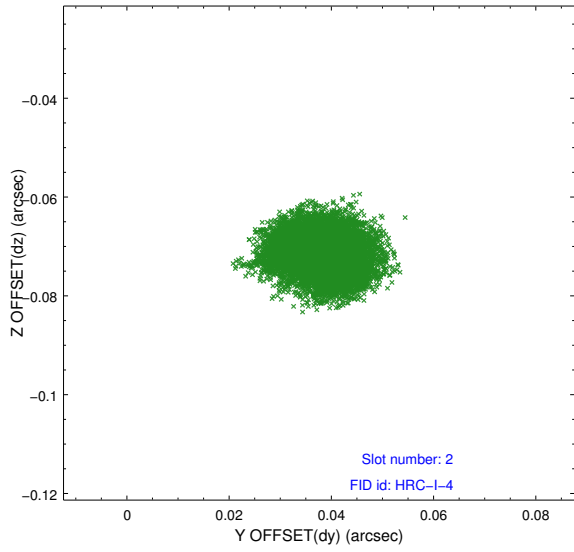
2.5.1 Slot 0



2.5.2 Slot 1



2.5.3 Slot 2



A Summary

A.1 Status

V&V Scientist	Jen Lauer
V&V Date (YYYY-MM-DD)	2012.09.13
V&V Edition	1
V&V Disposition and Status	OK
V&V Charge Time	35.969

A.2 Comments

Window constraint met. This is a moving target. Users will need to run `sso_freeze` or similar software to position the events in the reference frame of the target.