

# V&V Reference Report

## L2 ASCDS Version : 8.4.5

Observation 1912 - L2 Version 6  
Chandra X-Ray Center

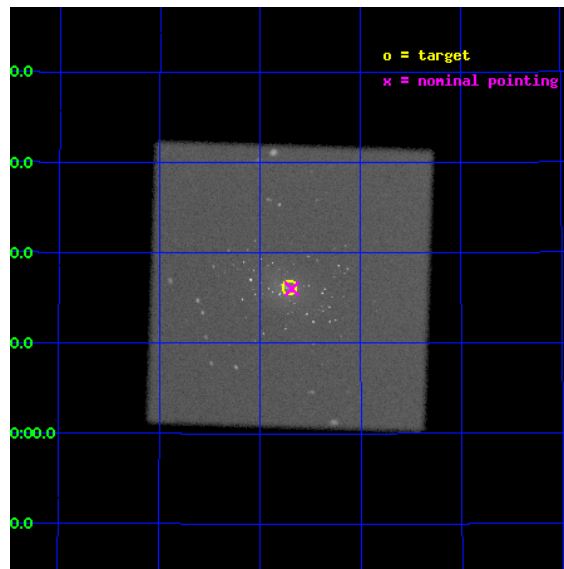
L2 Processing Date : Sep 26 2012

## Contents

<b>1</b>	<b>Front</b>	<b>2</b>
<b>2</b>	<b>OBI</b>	<b>3</b>
2.1	OBI . . . . .	3
2.1.1	Images . . . . .	3
2.1.2	Parameters . . . . .	4
2.1.3	Events . . . . .	4
2.2	Compared Parameters . . . . .	5
2.3	Aspect . . . . .	6
2.4	Star Slots . . . . .	9
2.4.1	Slot 3 . . . . .	9
2.4.2	Slot 4 . . . . .	10
2.4.3	Slot 5 . . . . .	11
2.4.4	Slot 6 . . . . .	12
2.4.5	Slot 7 . . . . .	13
2.5	FID Slots . . . . .	14
2.5.1	Slot 0 . . . . .	14
2.5.2	Slot 1 . . . . .	15
2.5.3	Slot 2 . . . . .	16
<b>A</b>	<b>Summary</b>	<b>17</b>
A.1	Status . . . . .	17
A.2	Comments . . . . .	17

# 1 Front

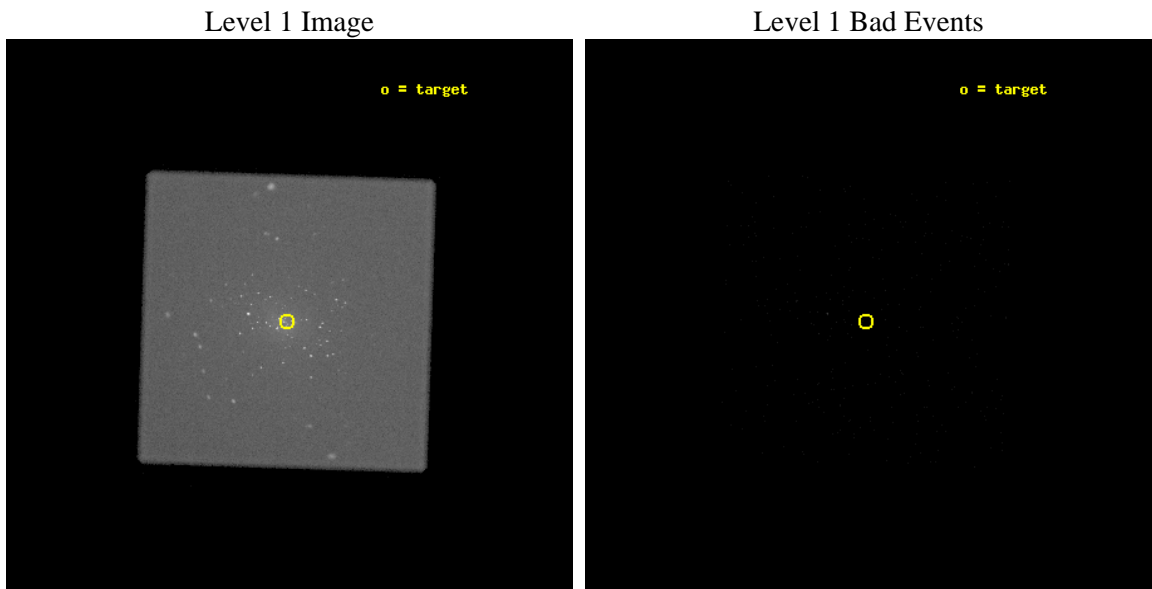
seq_num	400125	Sequence number
obs_id	1912	Observation id
title	SEARCHING FOR X-RAY PULSARS IN M31	Proposal title
observer	Prof. Philip Kaaret	Principal investigator
object	M31	Source name
ra_targ	10.67625	Observer's specified target RA [deg]
dec_targ	41.269	Observer's specified target Dec [deg]
ra_nom	10.671021	Nominal RA [deg]
dec_nom	41.267325	Nominal Dec [deg]
roll_nom	226.834444	Nominal Roll [deg]
revision	6	Processing version of data
ontime	46973.701857165	[s]
livetime	46731.838207443	Ontime multiplied by DTCOR
l2events	1287044	Number of level 2 events



## 2 OBI

### 2.1 OBI

#### 2.1.1 Images



### 2.1.2 Parameters

obi_num	0	Obi number	sched_exp_time	47000.000000	[s] Scheduled observation exposure time
ascdsver	8.4.5	Processing system revision	ontime	46973.701867178	[s]
caldbver	4.5.1.1	&#160	l1events	1888231	Number of level 1 events
date	2012-09-26T03:58:13	Date and time of file creation			
revision	6	Processing version of data			

### 2.1.3 Events

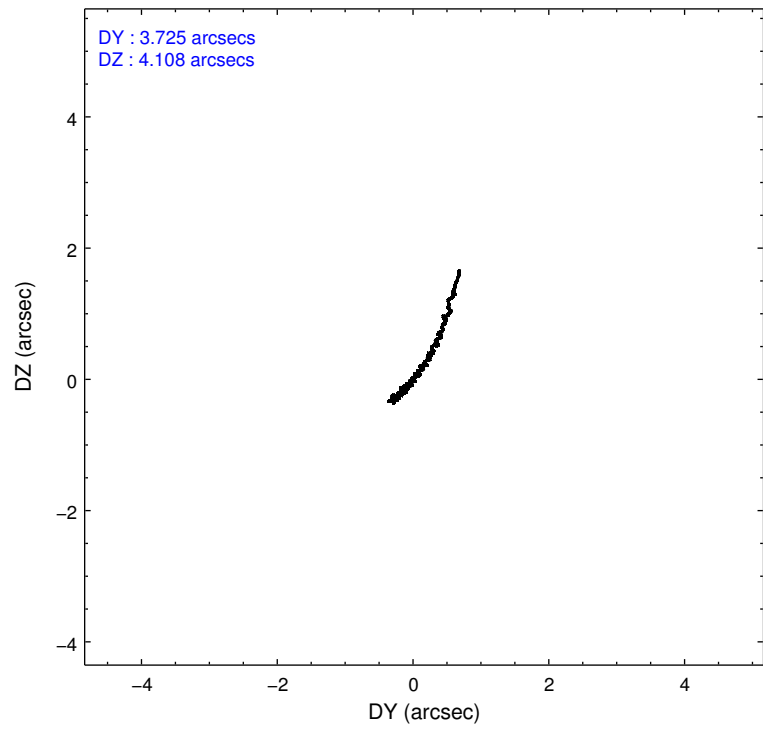
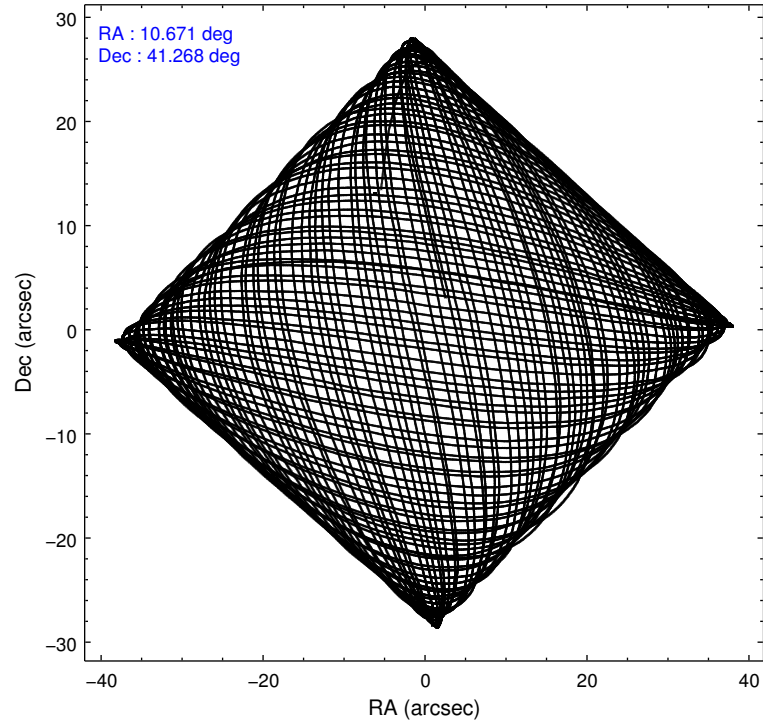
#### Level 1 Events

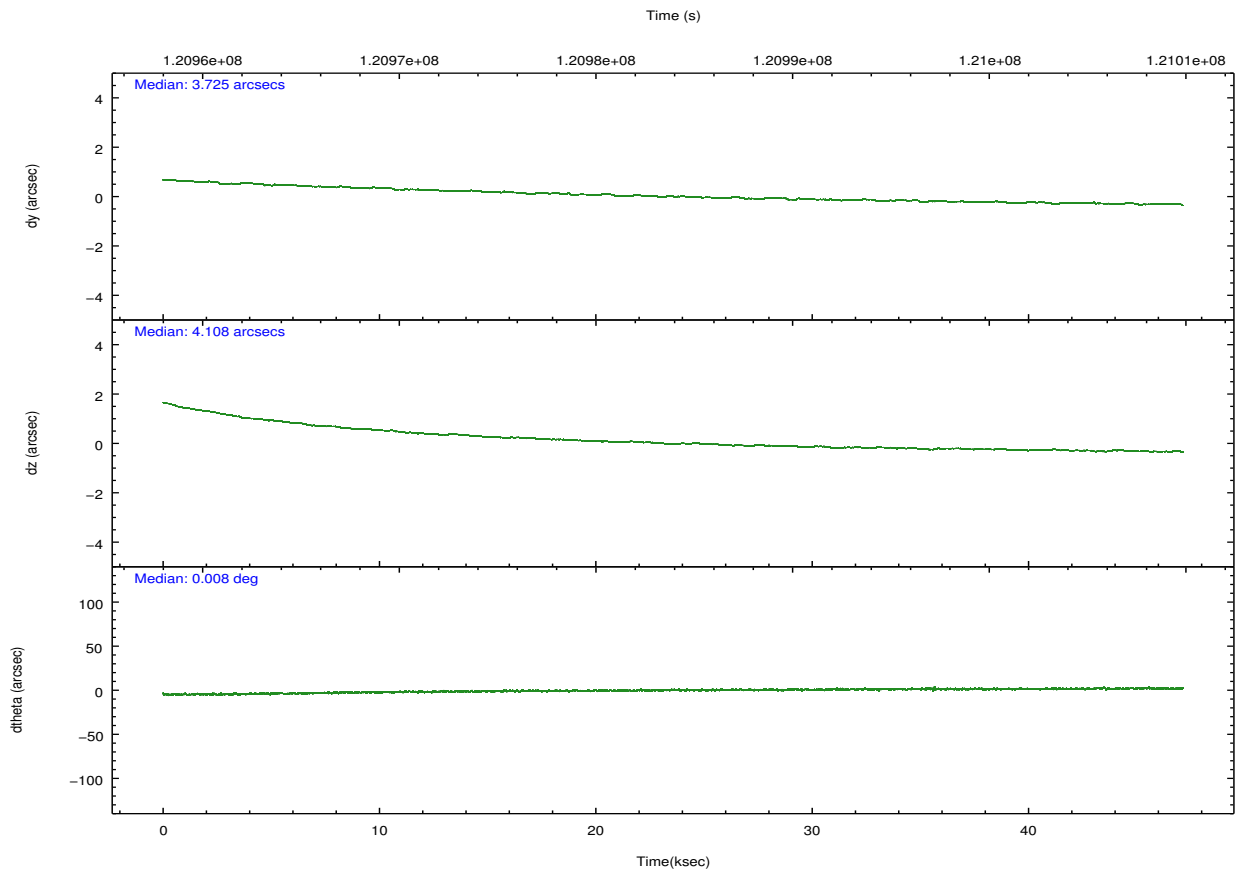
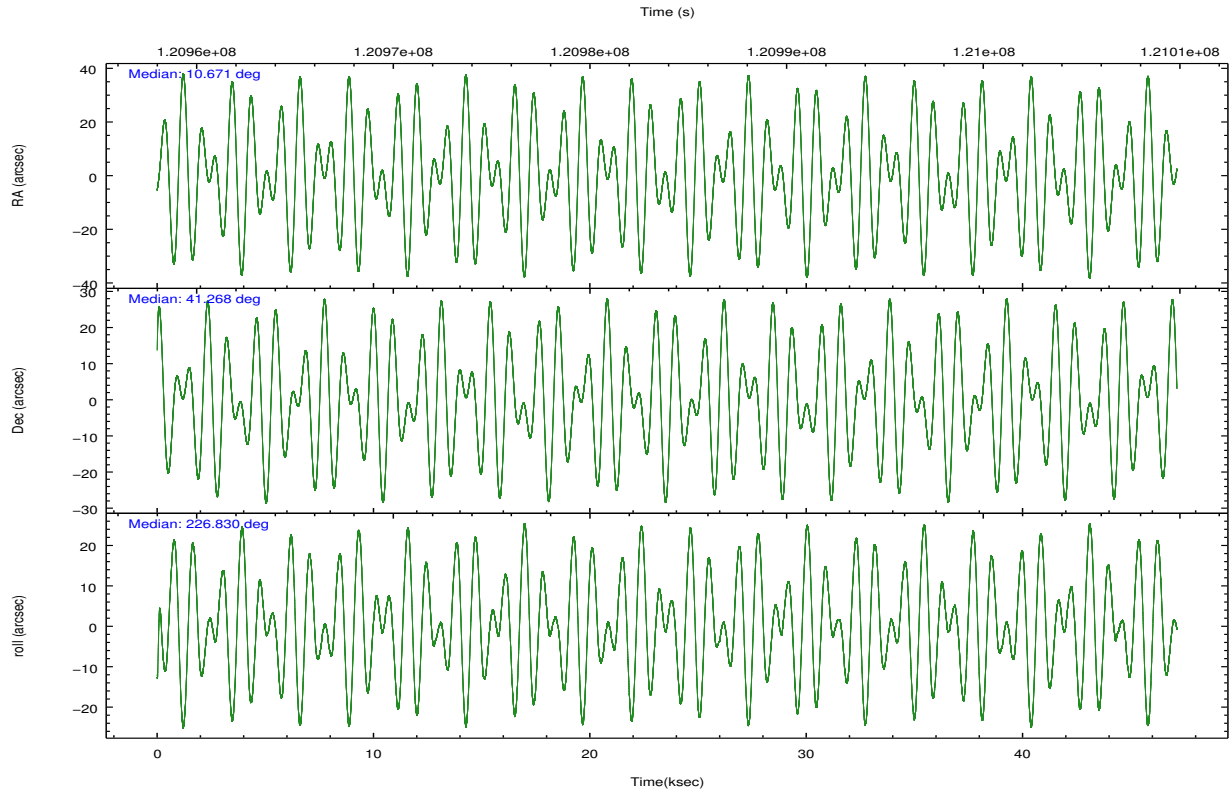
	<b>segment 0</b>
level 1 events	1888231
rejected events	5805
rejected %	0%

## 2.2 Compared Parameters

Parameter	Planned	Actual	Parameter	Planned	Actual
Instrument	HRC	HRC	Obspar format version number	7	7
Detector	HRC-I	HRC-I	Obspar file type	PREDICTED	ACTUAL
Grating	NONE	NONE	Obspar update status	NONE	UPDATED
Data mode	OBSERVING	OBSERVING			
Observation mode	POINTING	POINTING			
[deg] Pointing RA	10.678598	10.67111915942892			
[deg] Pointing Dec	41.293828	41.26732148531868			
[deg] Pointing Roll	226.924936	226.8343794896975			
[mm] SIM focus pos	-1.040293	-1.038866356238299			
[mm] SIM defocus	0	0.001426264420575141			
[mm] SIM translation stage pos	126.985494	126.9829799899862			
[mm] SIM translation stage offset	0	0.002508901615314585			
[s] Observation start time (MET)	120960487.184000	120959360.501			
Observation start date	2001-11-01T00:07:03	2001-10-31T23:49:20			
[s] Observation end time (MET)	121007487.184000	121008304.76545			
Observation end date	2001-11-01T13:10:23	2001-11-01T13:25:04			

## 2.3 Aspect



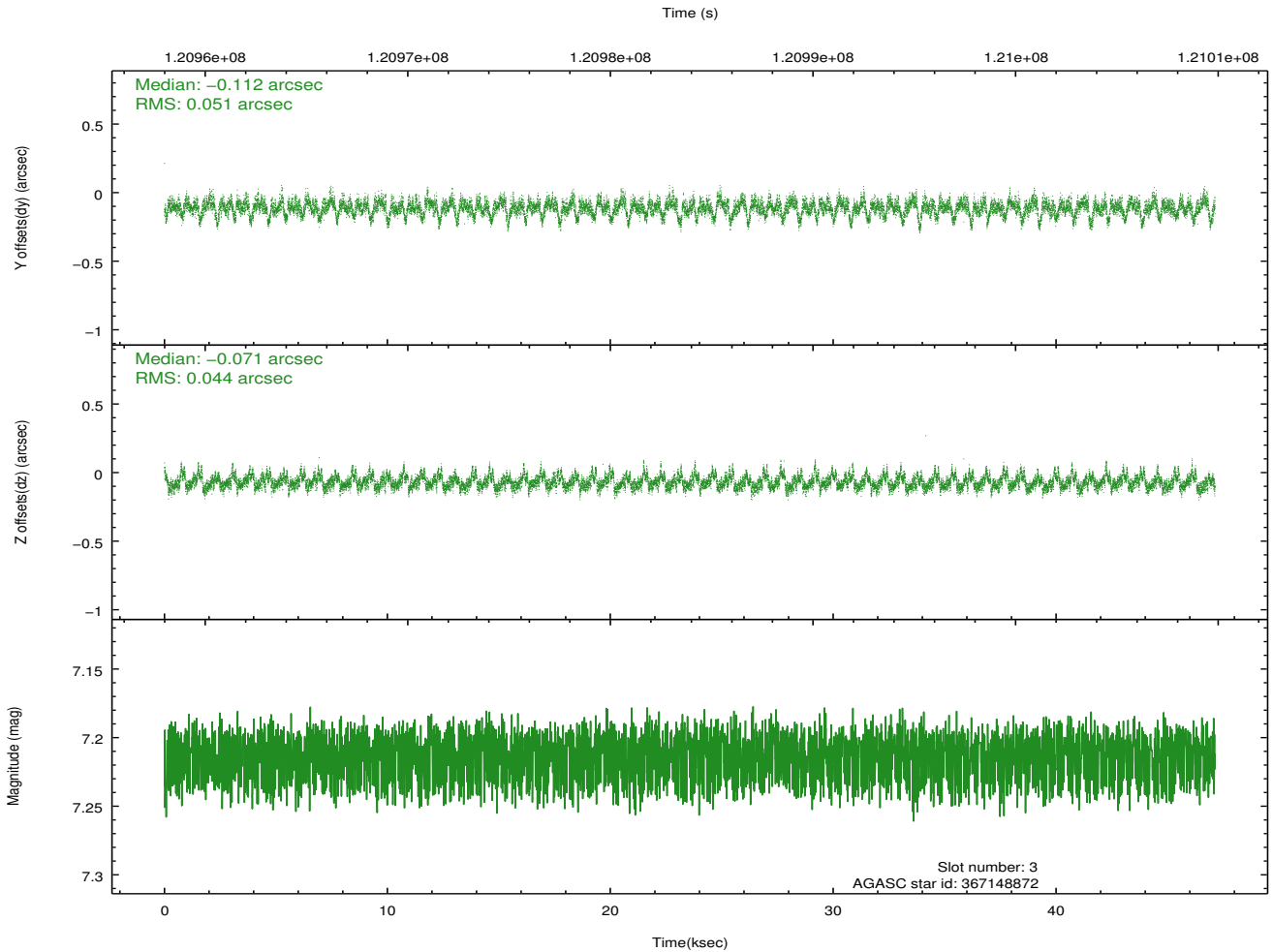
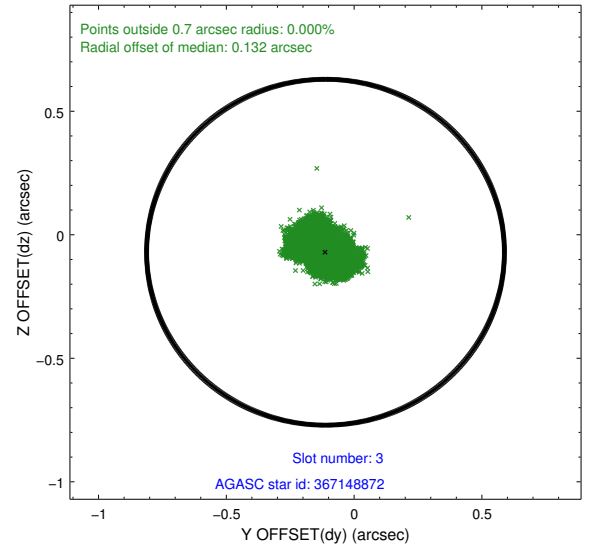
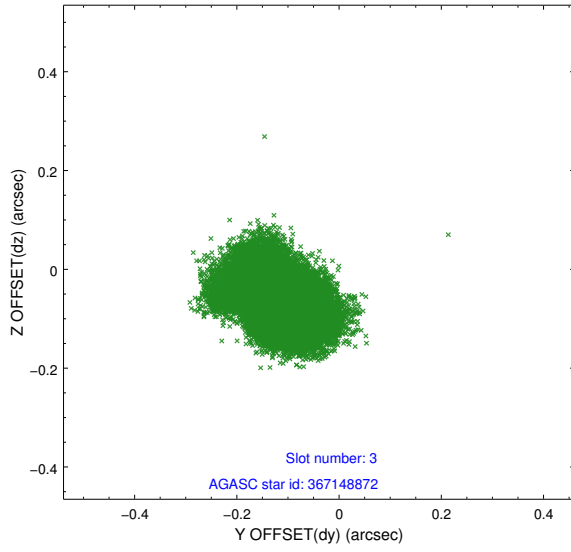


### Slot Statistics

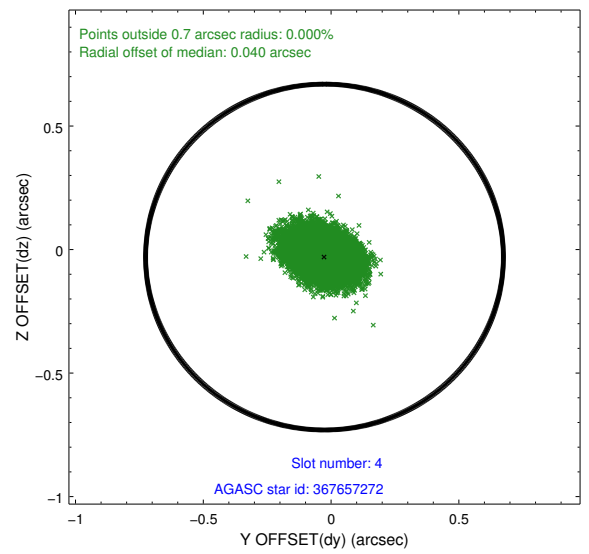
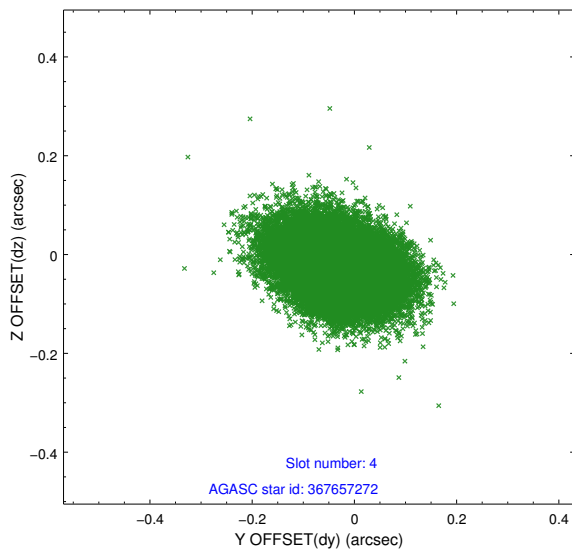
slot	status	id	mag	n_pts	med_dy	med_dz	dr1	dr2	ra	dec	mean_y	mean_z
0	FID	HRC-I-1	6.99	11493	0.021	0.071	0.010	0.039	0.000000	0.000000	-759.25	-1291.99
1	FID	HRC-I-2	7.02	11494	0.097	-0.098	0.012	0.043	0.000000	0.000000	853.39	-1293.82
2	FID	HRC-I-3	7.07	11494	-0.001	-0.064	0.013	0.030	0.000000	0.000000	-1187.70	1012.33
3	GUIDE	367148872	7.21	22988	-0.112	-0.071	0.072	0.121	10.505940	40.688258	1914.75	1144.75
4	GUIDE	367657272	8.47	22988	-0.026	-0.030	0.085	0.141	11.834471	41.298907	-2162.89	2257.04
5	GUIDE	367671800	9.41	22978	-0.071	0.043	0.104	0.168	10.554735	41.964935	-1537.76	-1892.06
6	GUIDE	367145856	9.30	22970	0.148	0.113	0.093	0.153	10.744946	40.402085	2221.58	2325.86
7	GUIDE	367665472	9.50	22968	0.019	-0.037	0.193	0.418	10.241611	41.730843	-348.44	-1933.73

## 2.4 Star Slots

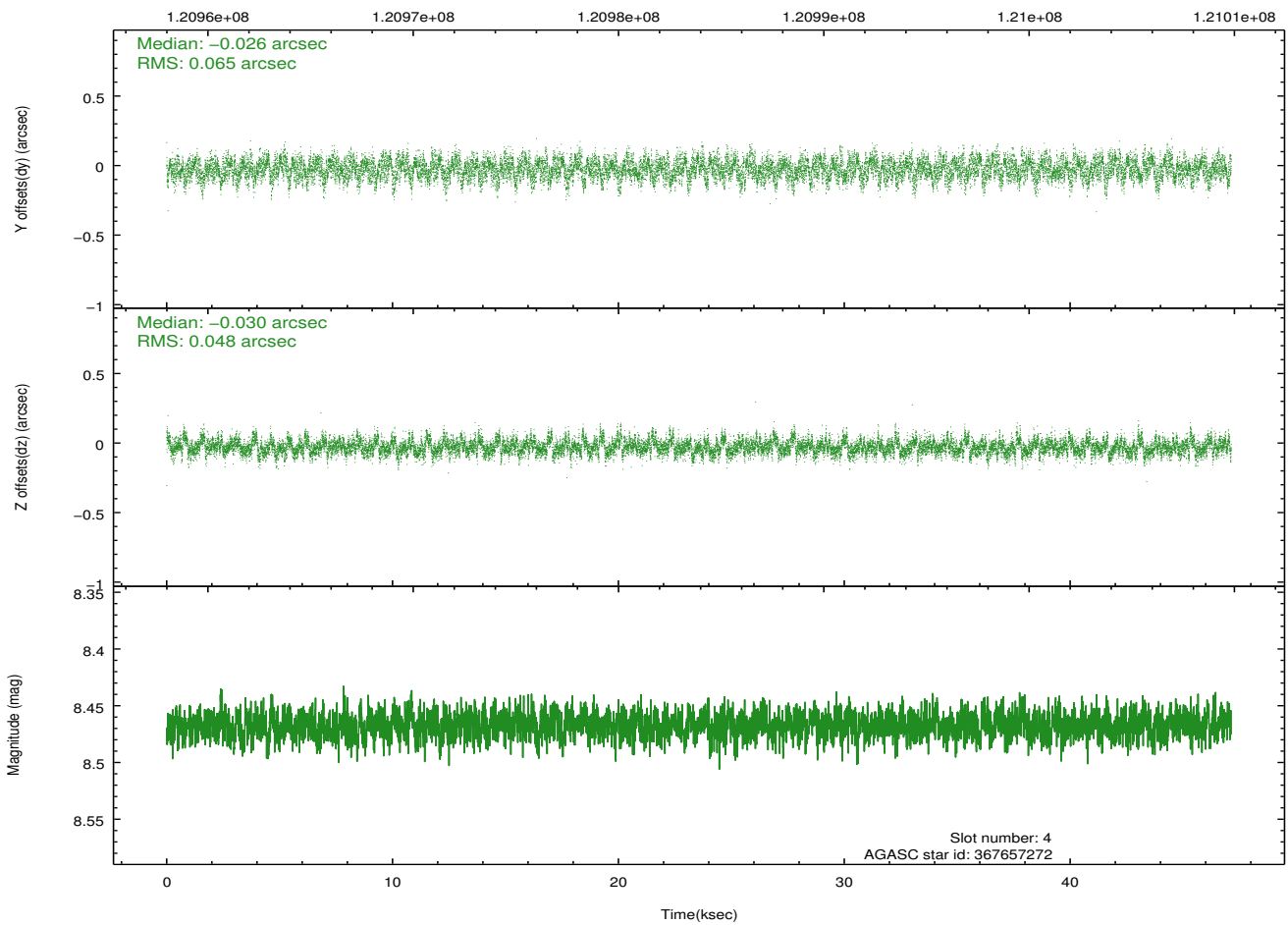
### 2.4.1 Slot 3



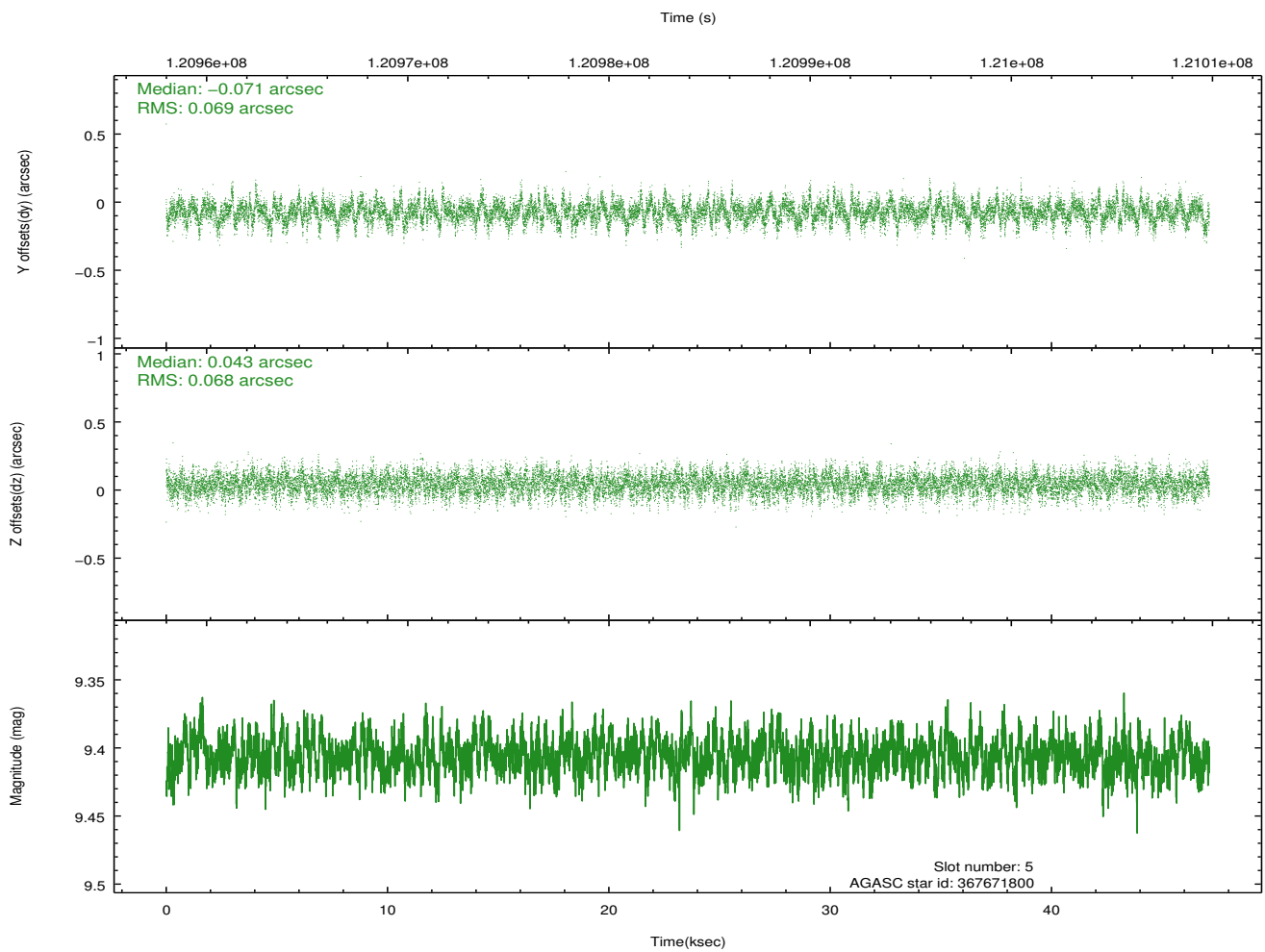
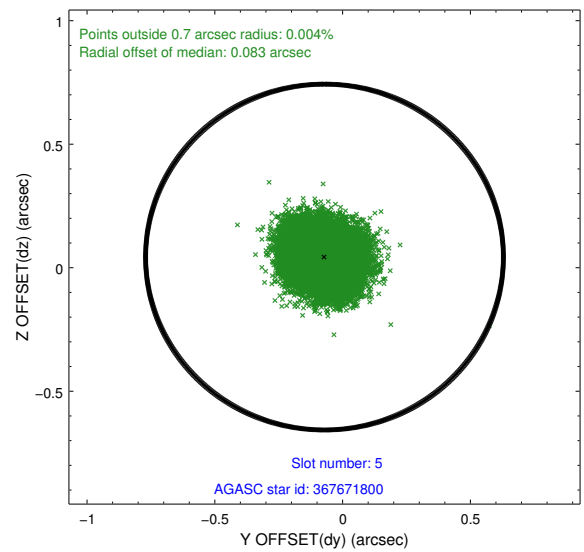
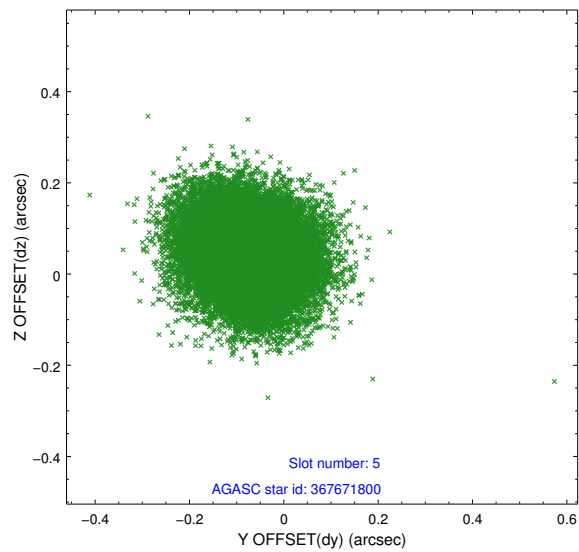
## 2.4.2 Slot 4



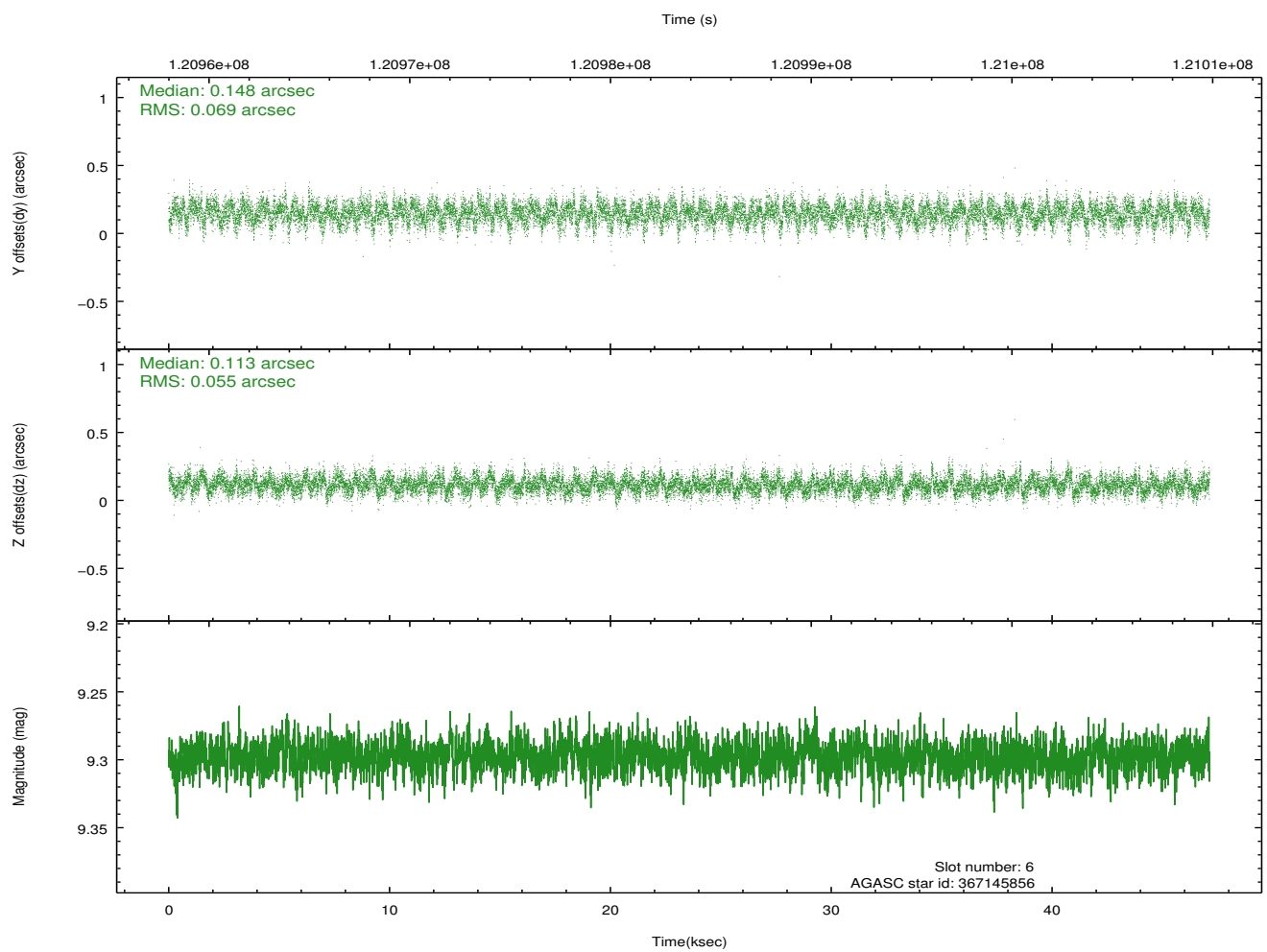
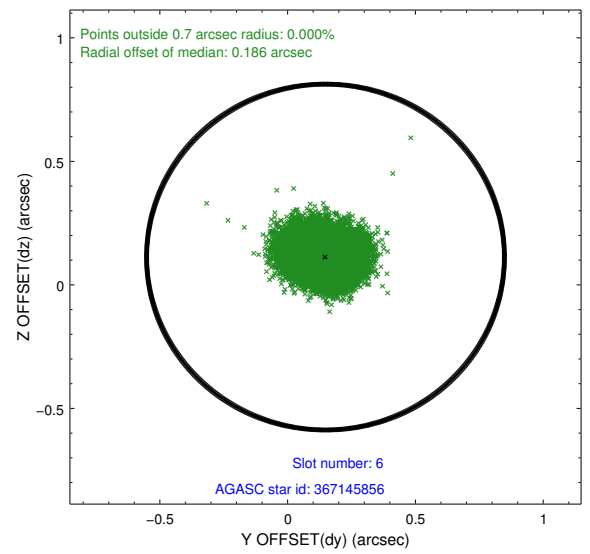
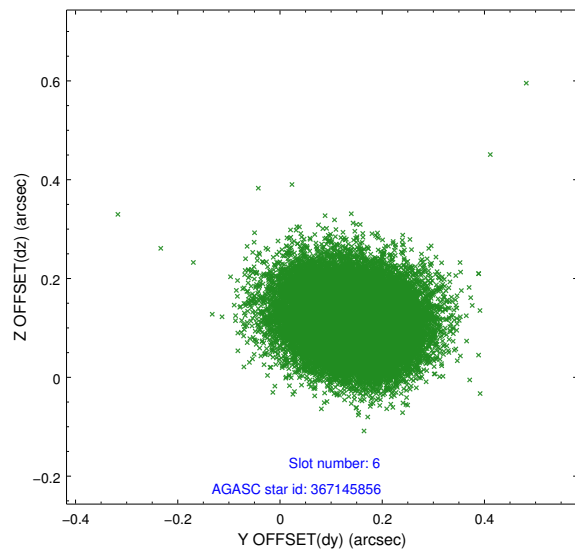
Time (s)



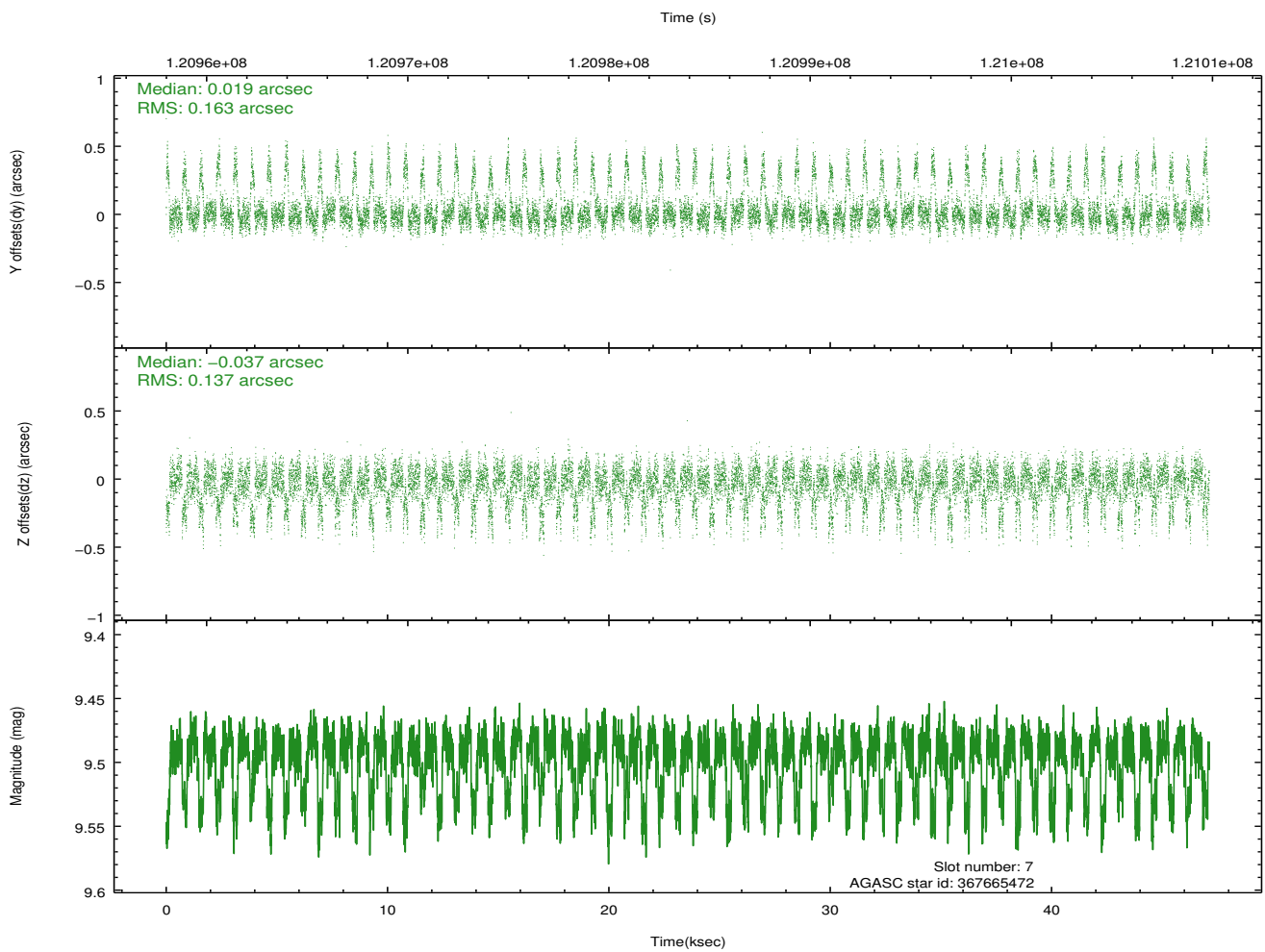
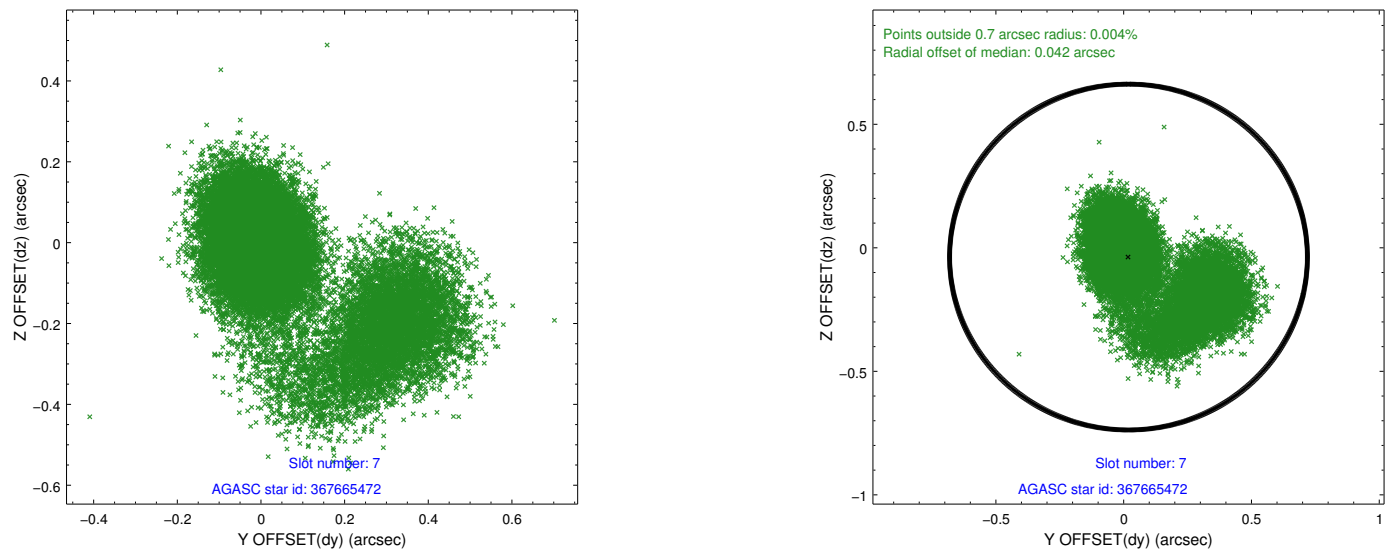
### 2.4.3 Slot 5



## 2.4.4 Slot 6

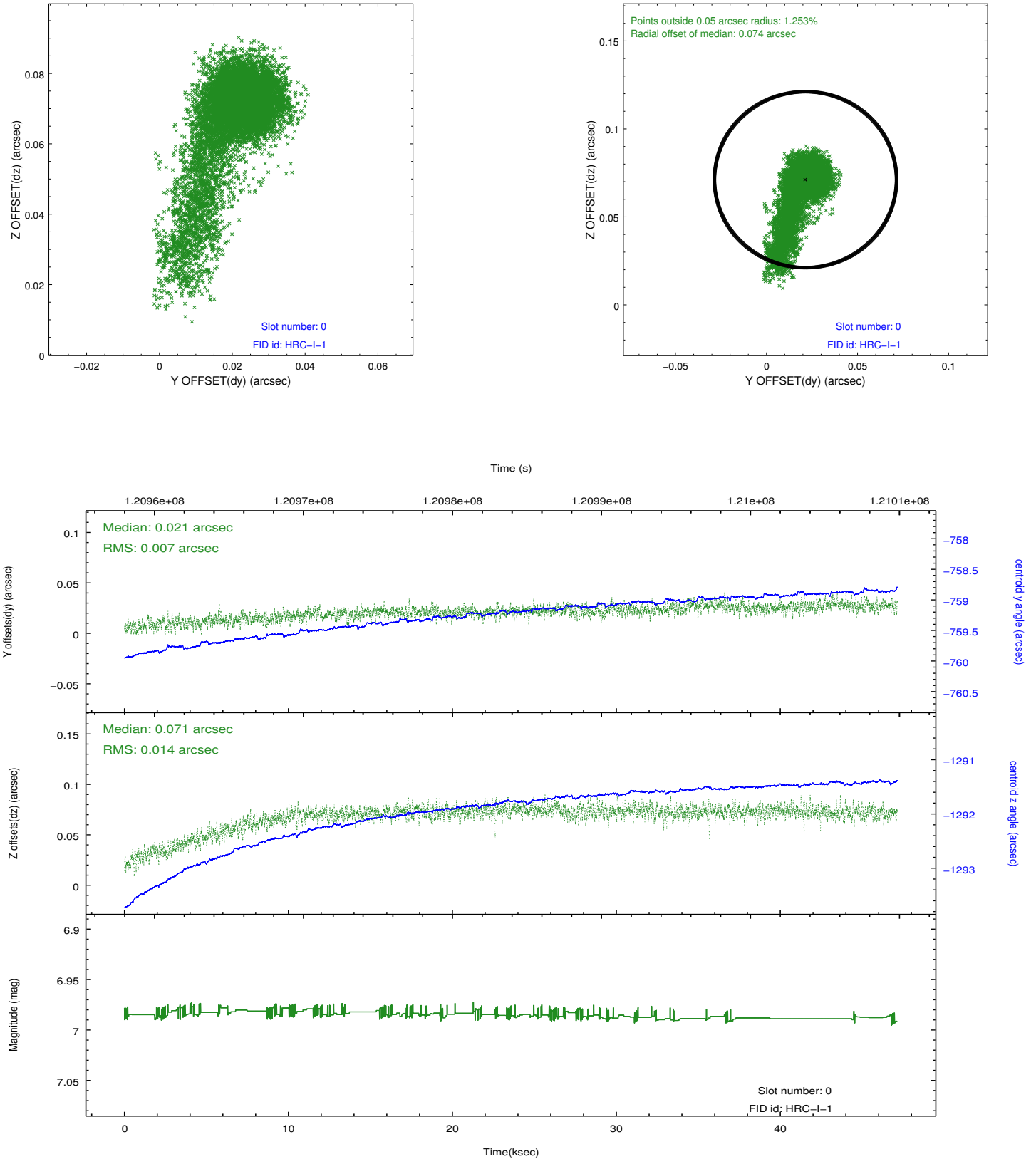


## 2.4.5 Slot 7

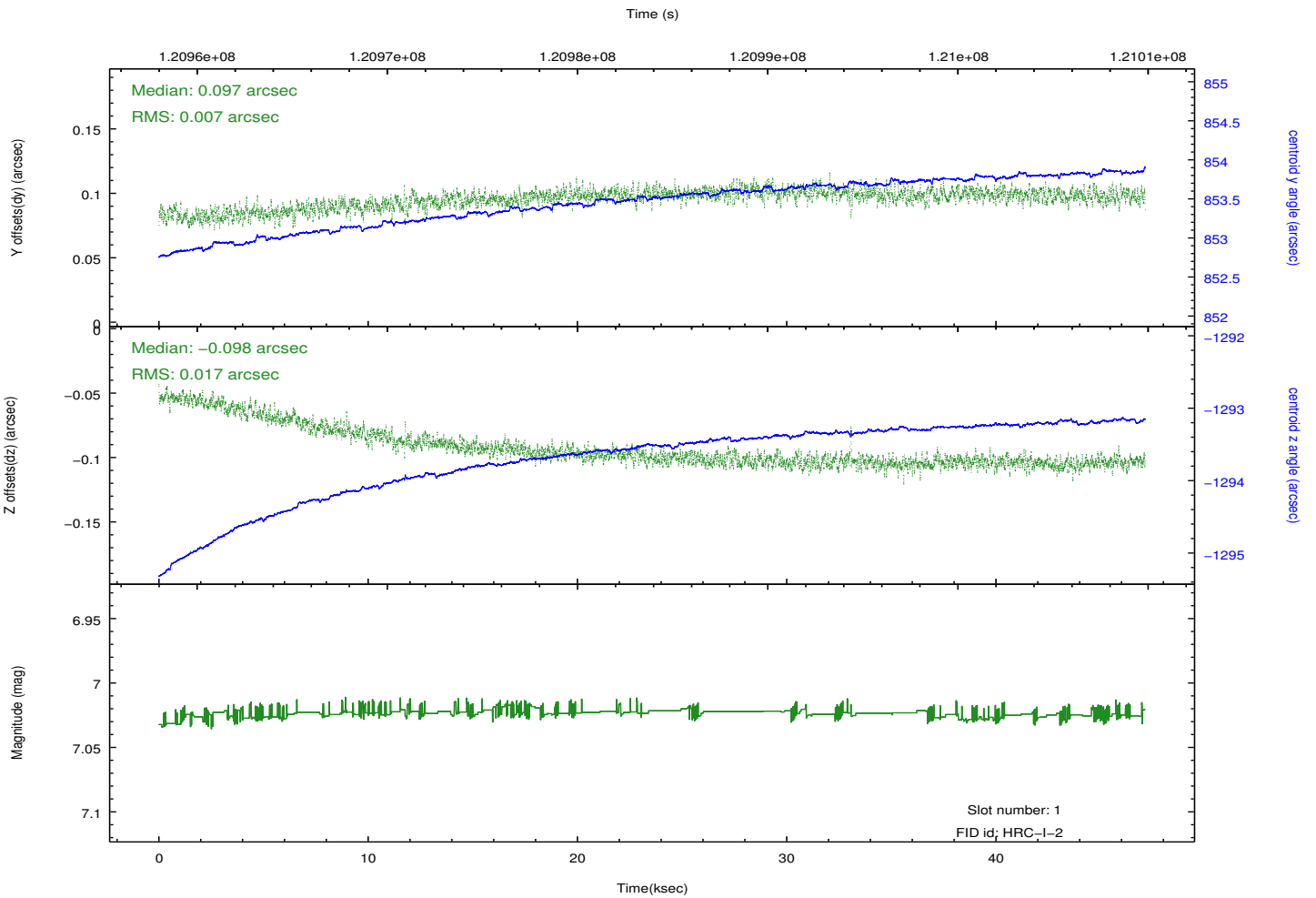
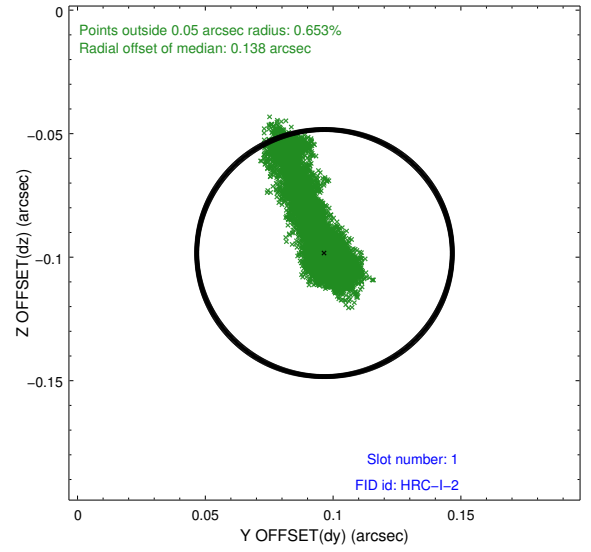
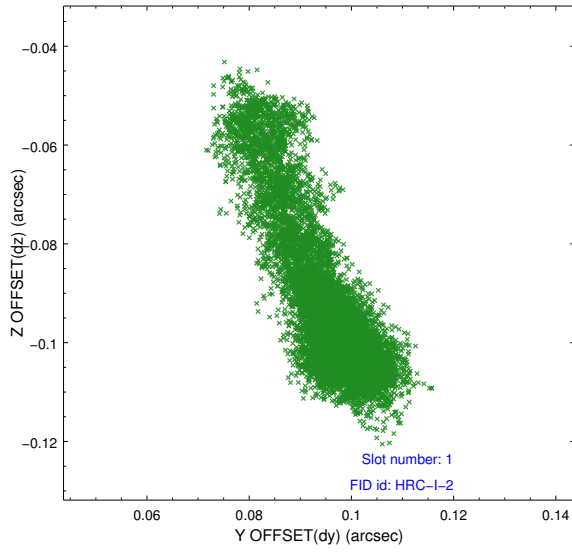


## 2.5 FID Slots

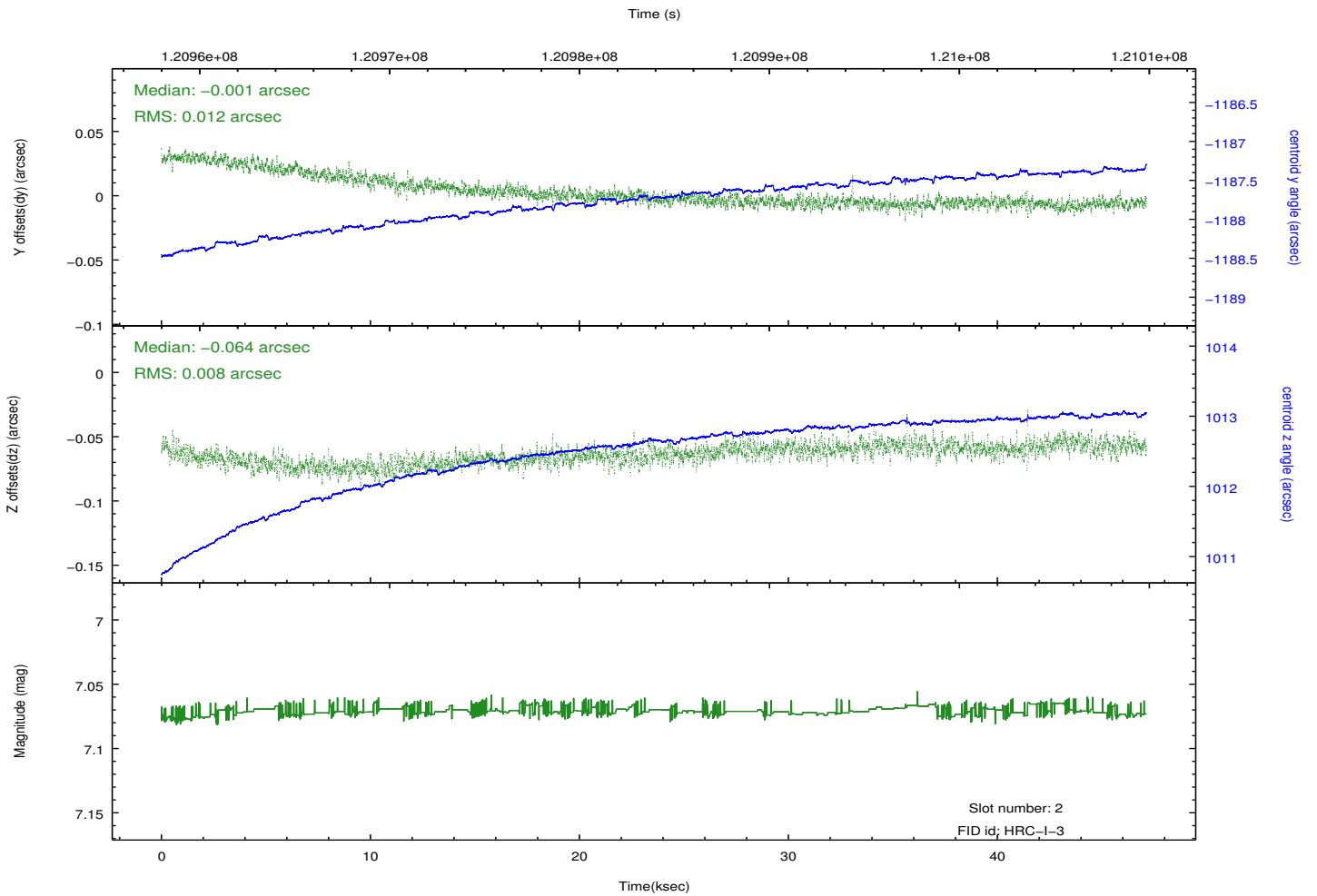
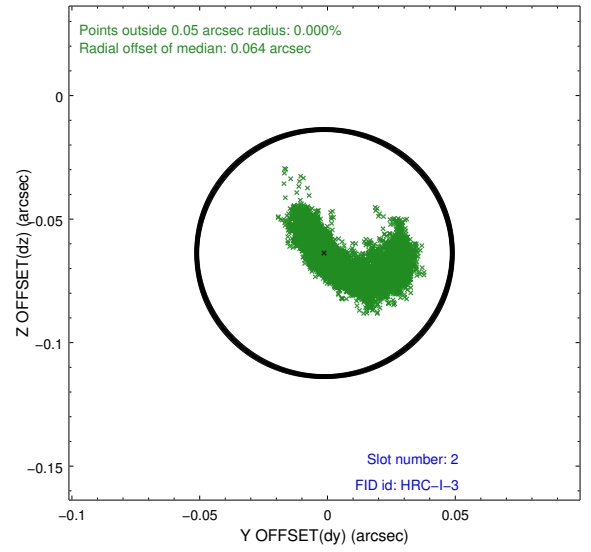
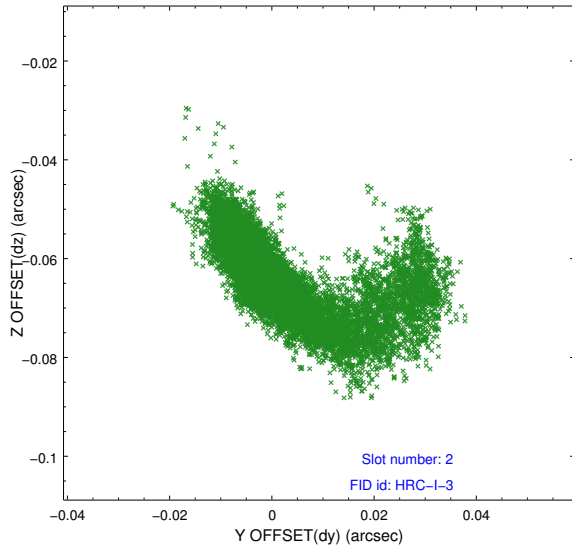
### 2.5.1 Slot 0



## 2.5.2 Slot 1



### 2.5.3 Slot 2



# A Summary

## A.1 Status

V&V Scientist	Beth Sundheim
V&V Date (YYYY-MM-DD)	2012.09.28
V&V Edition	1
V&V Disposition and Status	OK
V&V Charge Time	46.9737

## A.2 Comments