

V&V Reference Report

L2 ASCDS Version : 8.4.5

Observation 1972 - L2 Version 3
Chandra X-Ray Center

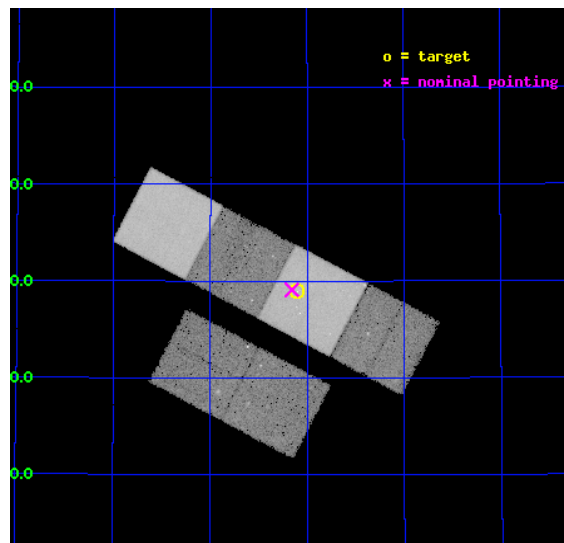
L2 Processing Date : Sep 26 2012

Contents

1	Front	2
2	OBI	3
2.1	OBI	3
2.1.1	Images	3
2.1.2	Bias	3
2.1.3	Parameters	4
2.1.4	Events	4
2.2	Compared Parameters	5
2.3	Aspect	6
2.4	Star Slots	9
2.4.1	Slot 3	9
2.4.2	Slot 4	10
2.4.3	Slot 5	11
2.4.4	Slot 6	12
2.4.5	Slot 7	13
2.5	FID Slots	14
2.5.1	Slot 0	14
2.5.2	Slot 1	15
2.5.3	Slot 2	16
A	Summary	17
A.1	Status	17
A.2	Comments	17

1 Front

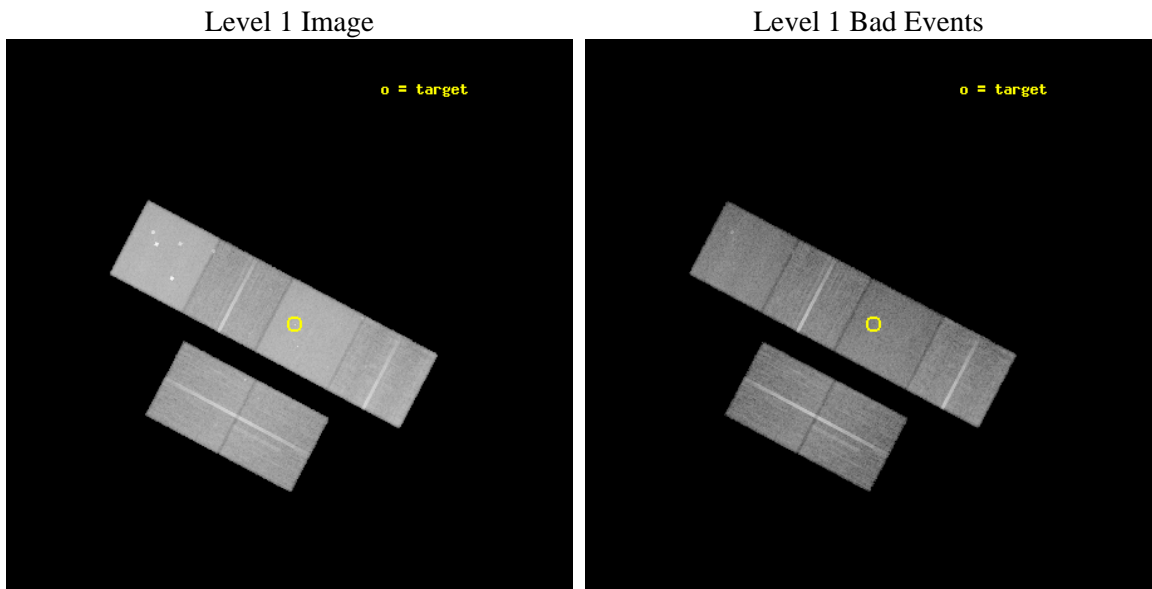
seq_num	500149	Sequence number
obs_id	1972	Observation id
title	CONTINUING CHANDRA OBSERVATIONS OF THE X-RAY SUPERNOVAE SN 1999EM AND SN 1998S	Proposal title
observer	Prof. Walter Lewin	Principal investigator
object	SN 1998S	Source name
dtcycle	0	
cycle	P	events from which exps? Prim/Second/Both
ra_targ	176.525417	Observer's specified target RA [deg]
dec_targ	47.482167	Observer's specified target Dec [deg]
ra_nom	176.53919222963	Nominal RA [deg]
dec_nom	47.485106650982	Nominal Dec [deg]
roll_nom	27.757060321025	Nominal Roll [deg]
revision	3	Processing version of data
ontime	29088.000027075	Sum of GTIs [s]
livetime	28719.670256042	Livetime [s]
ontime2	29088.000027075	Sum of GTIs [s]
ontime3	29088.000027075	Sum of GTIs [s]
ontime5	29088.000027075	Sum of GTIs [s]
ontime6	29088.000027075	Sum of GTIs [s]
ontime7	29088.000027075	Sum of GTIs [s]
ontime8	29084.759066835	Sum of GTIs [s]
l2events	381031	Number of level 2 events



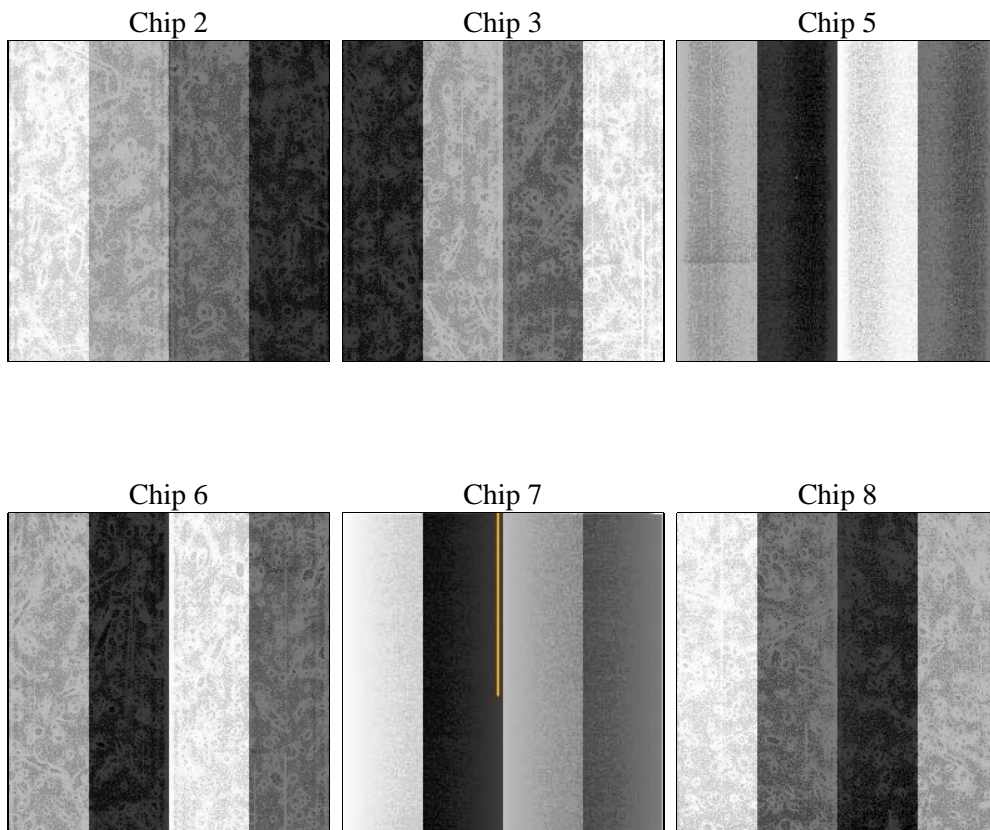
2 OBI

2.1 OBI

2.1.1 Images



2.1.2 Bias



2.1.3 Parameters

obi_num	2	Obi number	sched_exp_time	29331.652000	[s] Scheduled observation exposure time
ascdsver	8.4.5	Processing system revision	ontime	29088.000027075	Sum of GTIs [s]
caldbver	4.5.1.1	 	ontime2	29088.000027075	Sum of GTIs [s]
date	2012-09-26T00:40:31	Date and time of file creation	ontime3	29088.000027075	Sum of GTIs [s]
revision	3	Processing version of data	ontime5	29088.000027075	Sum of GTIs [s]
			ontime6	29088.000027075	Sum of GTIs [s]
			ontime7	29088.000027075	Sum of GTIs [s]
			ontime8	29084.759066835	Sum of GTIs [s]
			l1events	1365391	Number of level 1 events

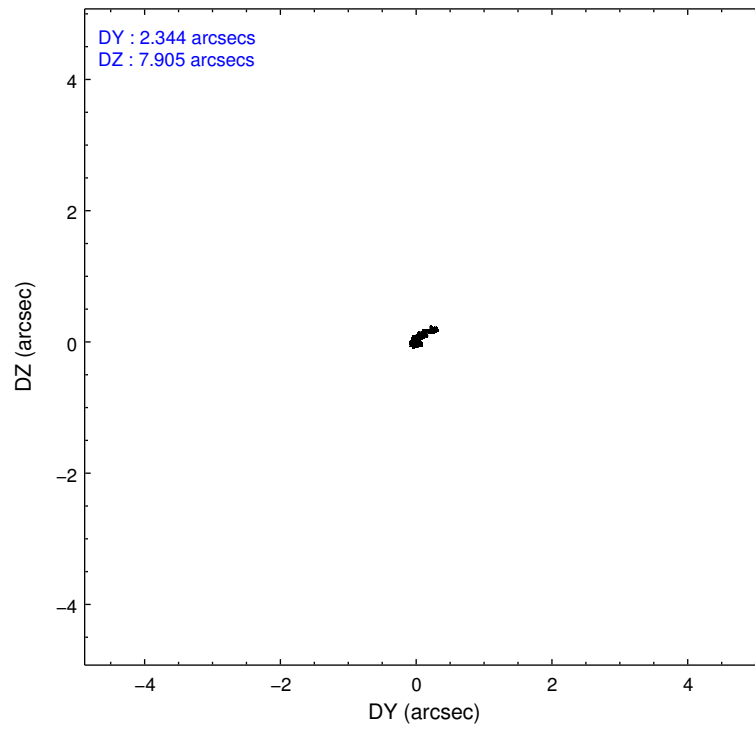
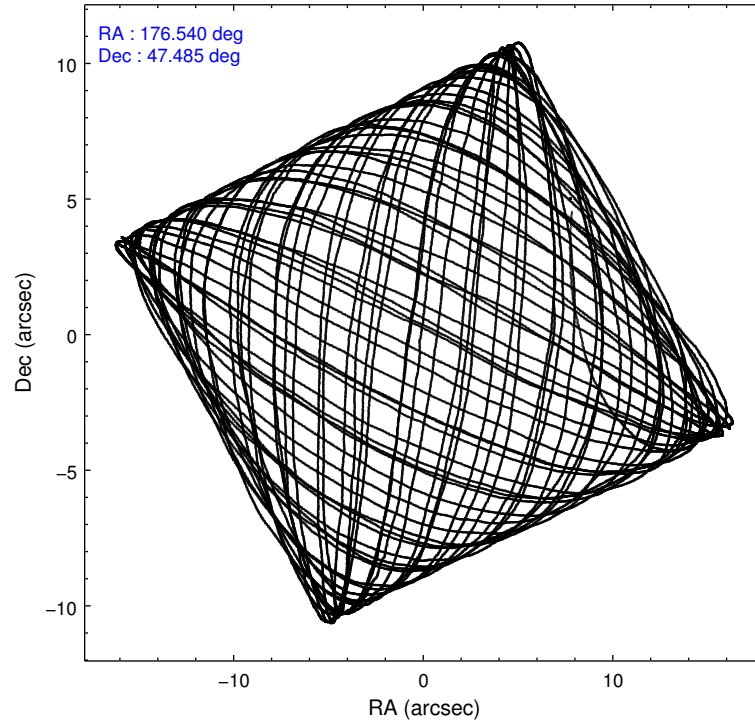
2.1.4 Events

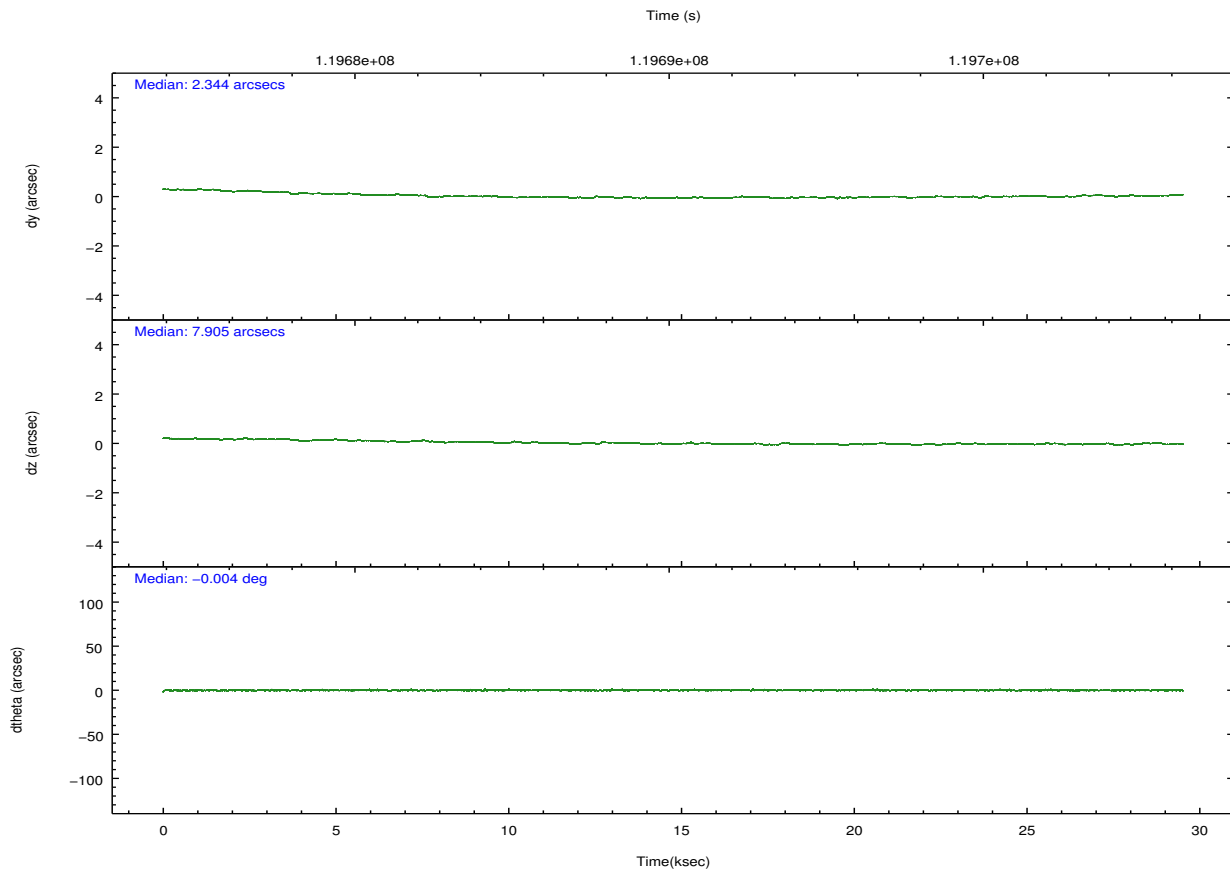
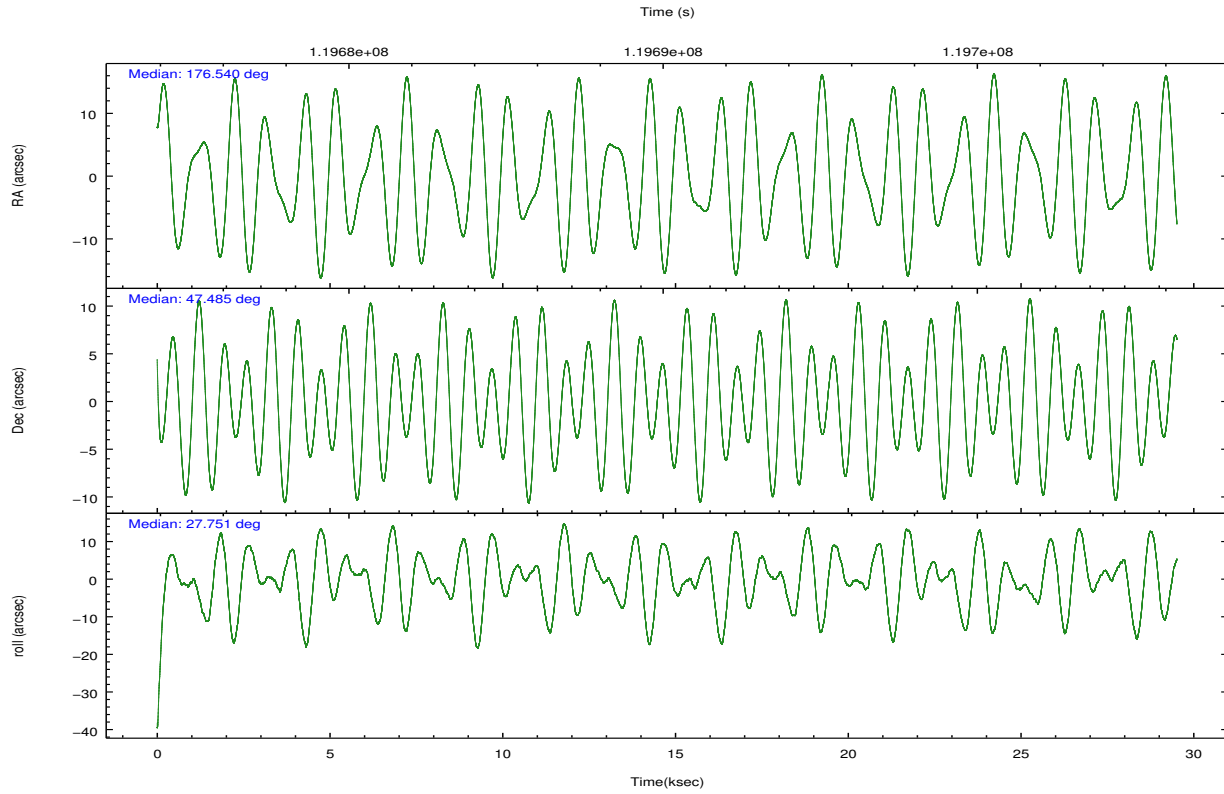
	ccd 2	ccd 3	ccd 5	ccd 6	ccd 7	ccd 8		ccd 2	ccd 3	ccd 5	ccd 6	ccd 7	ccd 8
level 1 events	185957	176696	311474	183461	278897	228906	grade 0 events	11476	11022	31332	11795	16134	17375
rejected events	162296	153437	140693	158607	135304	180103		6%	6%	10%	6%	5%	7%
rejected %	87%	86%	45%	86%	48%	78%	grade 1 events	101	101	677	103	203	143
								0%	0%	0%	0%	0%	0%
							grade 2 events	4661	4311	45728	4630	27905	10357
								2%	2%	14%	2%	10%	4%
							grade 3 events	1922	2098	8530	2072	12575	4945
								1%	1%	2%	1%	4%	2%
							grade 4 events	2003	2058	8181	2122	12669	4558
								1%	1%	2%	1%	4%	1%
							grade 5 events	6307	7001	19714	7690	22185	9804
								3%	3%	6%	4%	7%	4%
							grade 6 events	3605	3773	77073	4240	74356	11573
								1%	2%	24%	2%	26%	5%
							grade 7 events	155882	146332	120239	150809	112870	170151
								83%	82%	38%	82%	40%	74%

2.2 Compared Parameters

Parameter	Planned	Actual	Parameter	Planned	Actual
Instrument	ACIS	ACIS	Obspar format version number	7	7
Detector	ACIS-235678	ACIS-235678	Obspar file type	PREDICTED	ACTUAL
Grating	NONE	NONE	Obspar update status	NONE	UPDATED
Data mode	FAINT	FAINT	Number of optional ACIS chips dropped	0	0
Observation mode	POINTING	POINTING	On-chip summing requested	N	N
[deg] Pointing RA	176.518033	176.539192229627	Subarray requested	NONE	NONE
[deg] Pointing Dec	47.461879	47.48510665098156	Alternating exposures requested	N	N
[deg] Pointing Roll	27.616040	27.75706032102494	[s] Primary exposure time	0.000000	3.2
[mm] SIM focus pos	-0.684267	-0.6828225247311905			
[mm] SIM defocus	0	0.001444936568705701			
[mm] SIM translation stage pos	-190.132523	-190.1425803651734			
[mm] SIM translation stage offset	0	0.01005778216563158			
[s] Observation start time (MET)	119675547.184000	119674944.22499			
Observation start date	2001-10-17T03:11:23	2001-10-17T03:02:24			
[s] Observation end time (MET)	119704879.184000	119705194.02619			
Observation end date	2001-10-17T11:20:15	2001-10-17T11:26:34			
Read mode	TIMED	TIMED			

2.3 Aspect



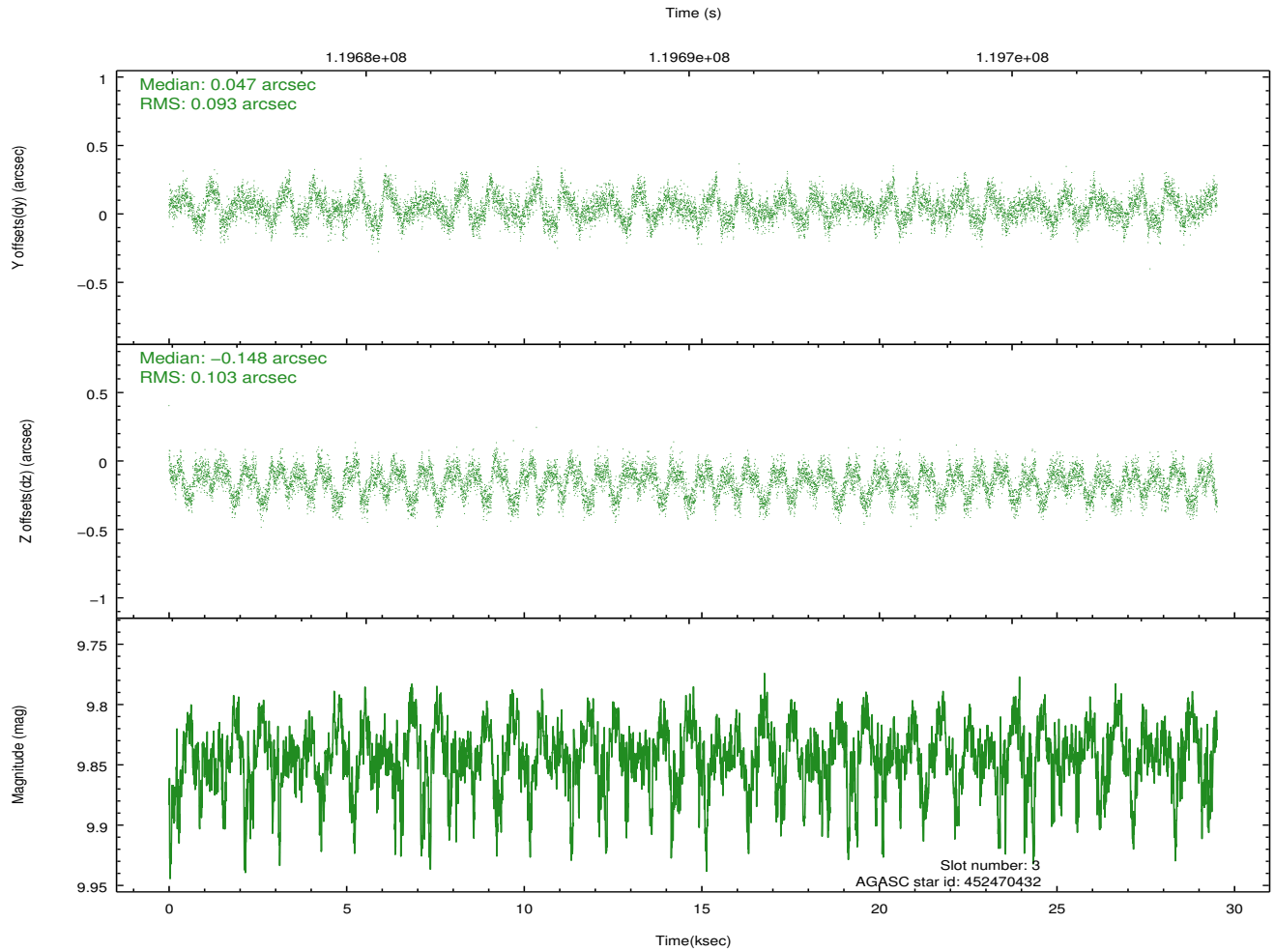
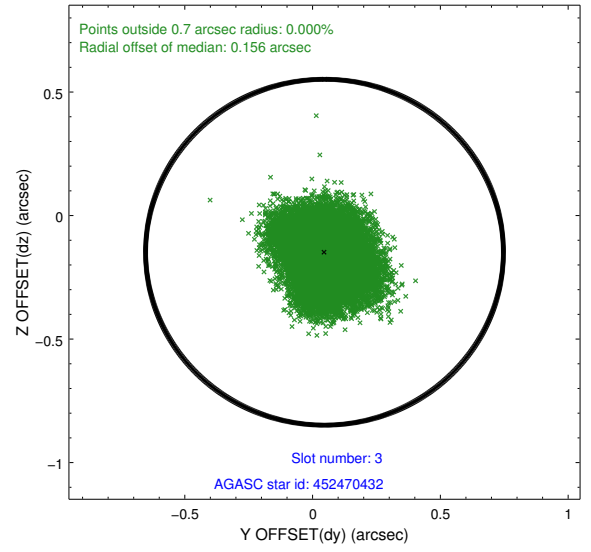
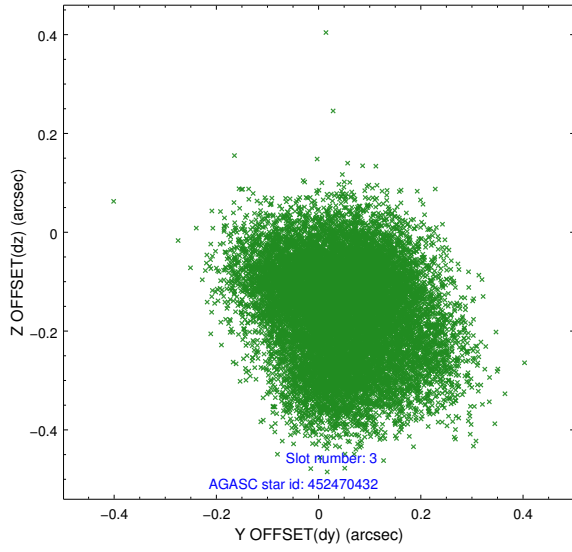


Slot Statistics

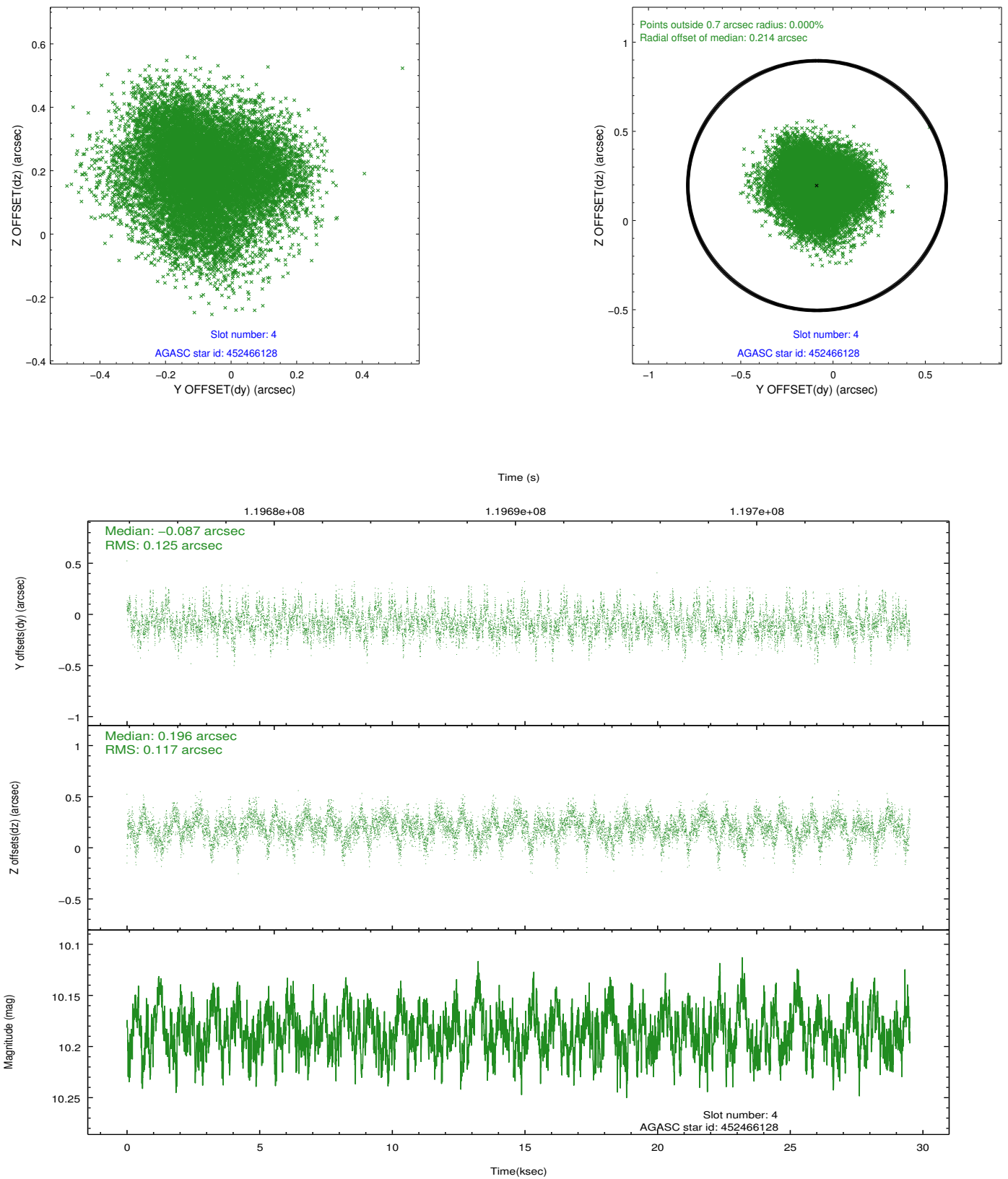
slot	status	id	mag	n_pts	med_dy	med_dz	dr1	dr2	ra	dec	mean_y	mean_z
0	FID	ACIS-S-2	7.11	7199	-0.010	-0.011	0.007	0.012	0.000000	0.000000	-755.02	-1729.08
1	FID	ACIS-S-4	7.20	7198	-0.041	0.008	0.007	0.012	0.000000	0.000000	2158.20	179.32
2	FID	ACIS-S-5	7.24	7198	0.021	0.012	0.008	0.015	0.000000	0.000000	-1807.72	173.11
3	GUIDE	452470432	9.84	14379	0.047	-0.148	0.150	0.230	176.712094	47.890435	1129.44	1150.60
4	GUIDE	452466128	10.19	14380	-0.087	0.196	0.186	0.292	177.327482	47.076111	1118.92	-2140.80
5	GUIDE	452468032	9.84	14387	0.006	0.045	0.114	0.204	176.120312	46.601291	-2307.24	-2287.11
6	GUIDE	452474496	9.79	14396	0.178	-0.115	0.126	0.202	175.552399	47.604662	-1832.77	1554.64
7	GUIDE	452471776	10.12	14392	-0.142	0.039	0.114	0.186	176.906039	48.172782	2011.58	1838.63

2.4 Star Slots

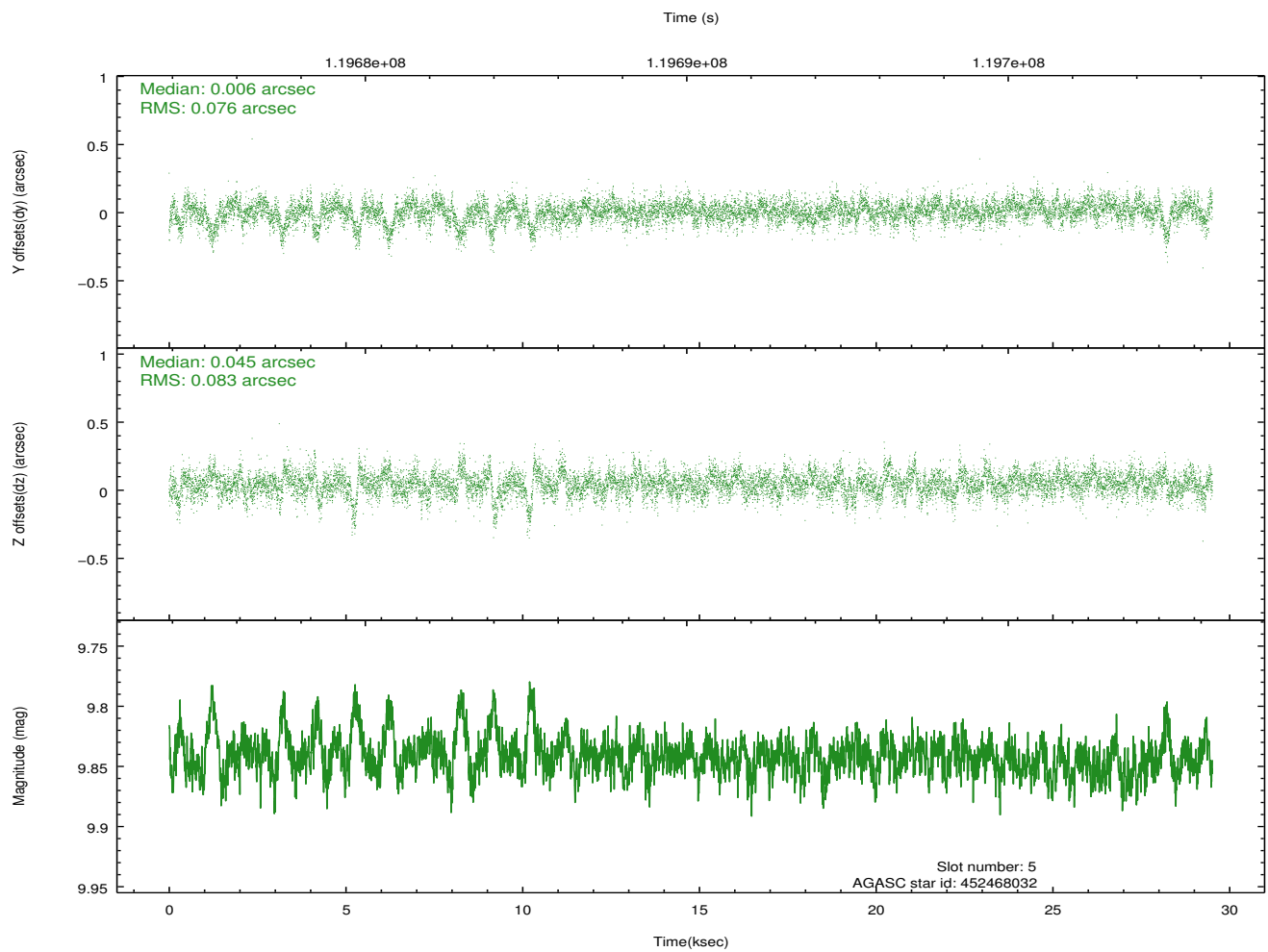
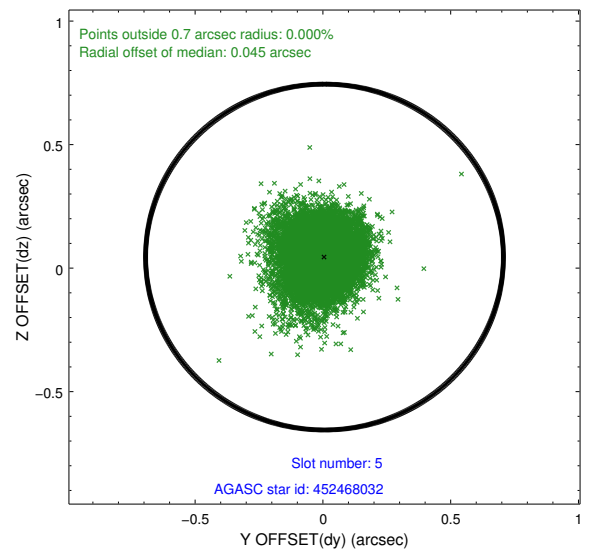
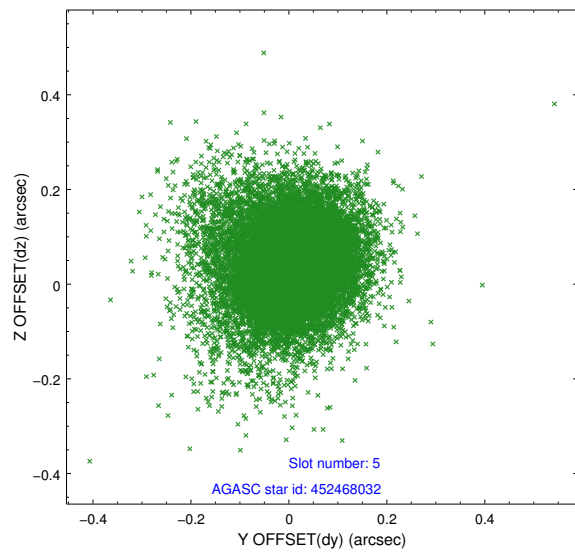
2.4.1 Slot 3



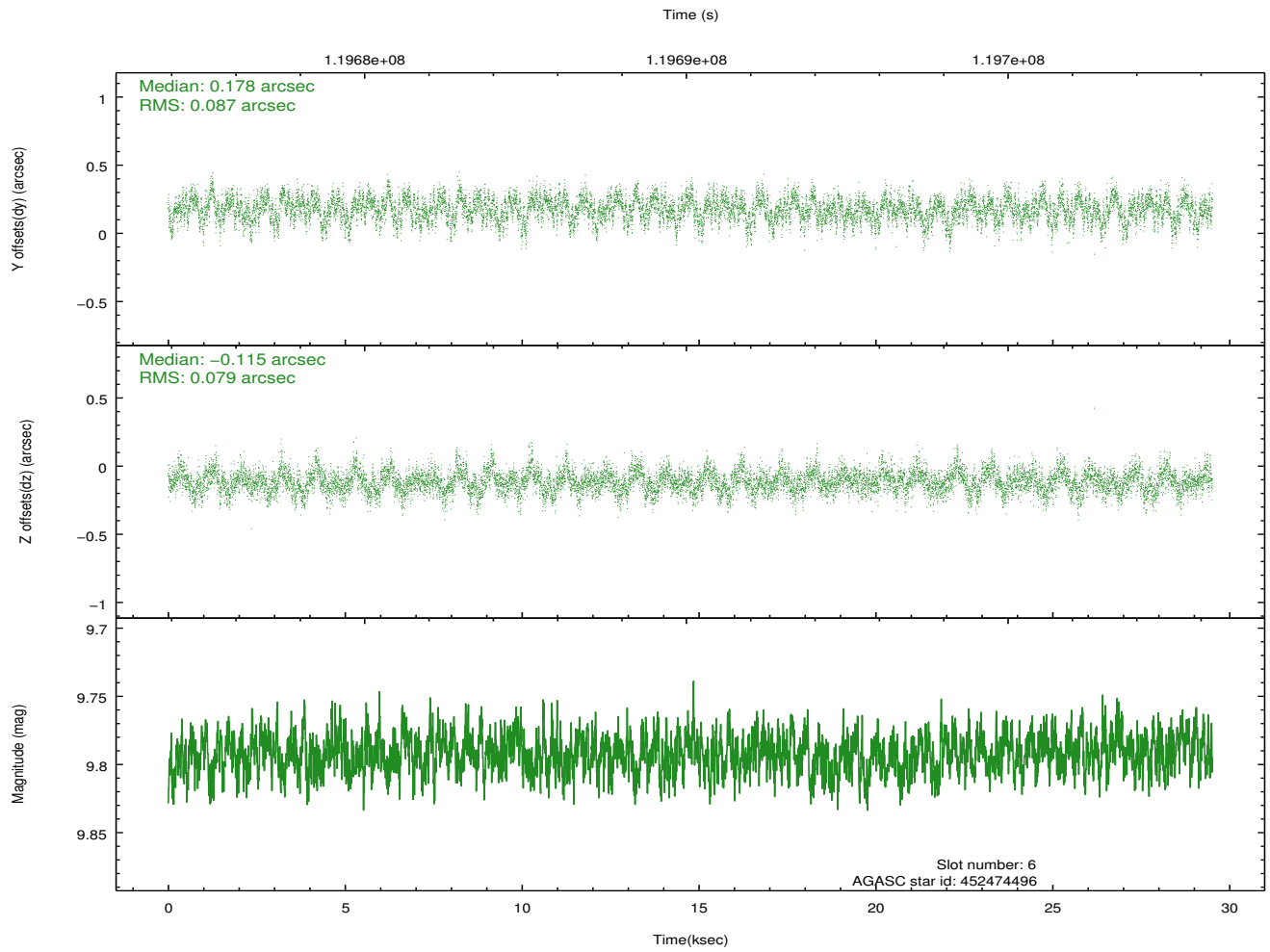
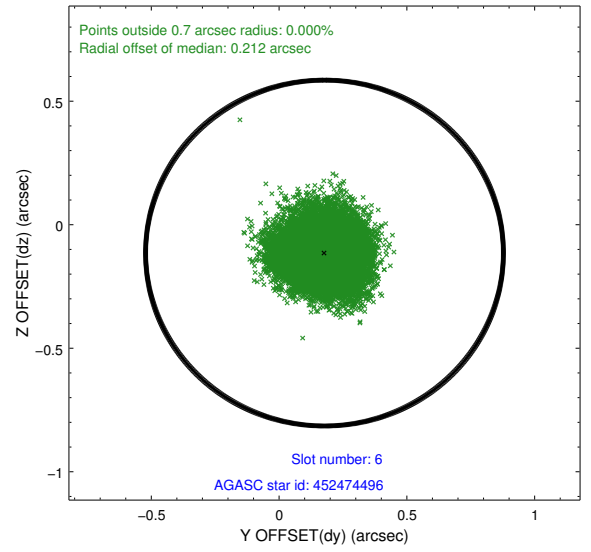
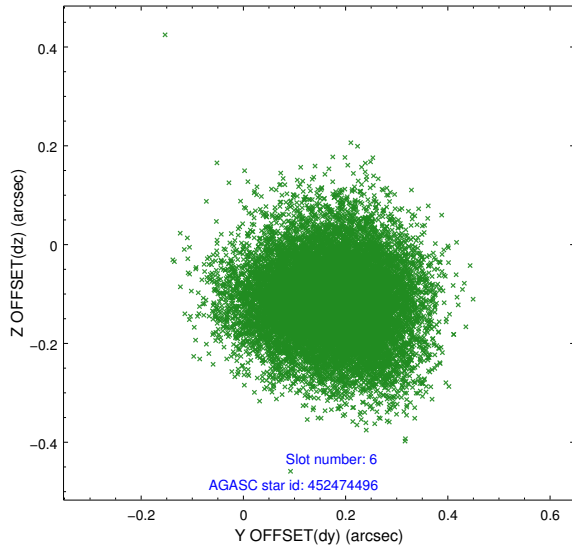
2.4.2 Slot 4



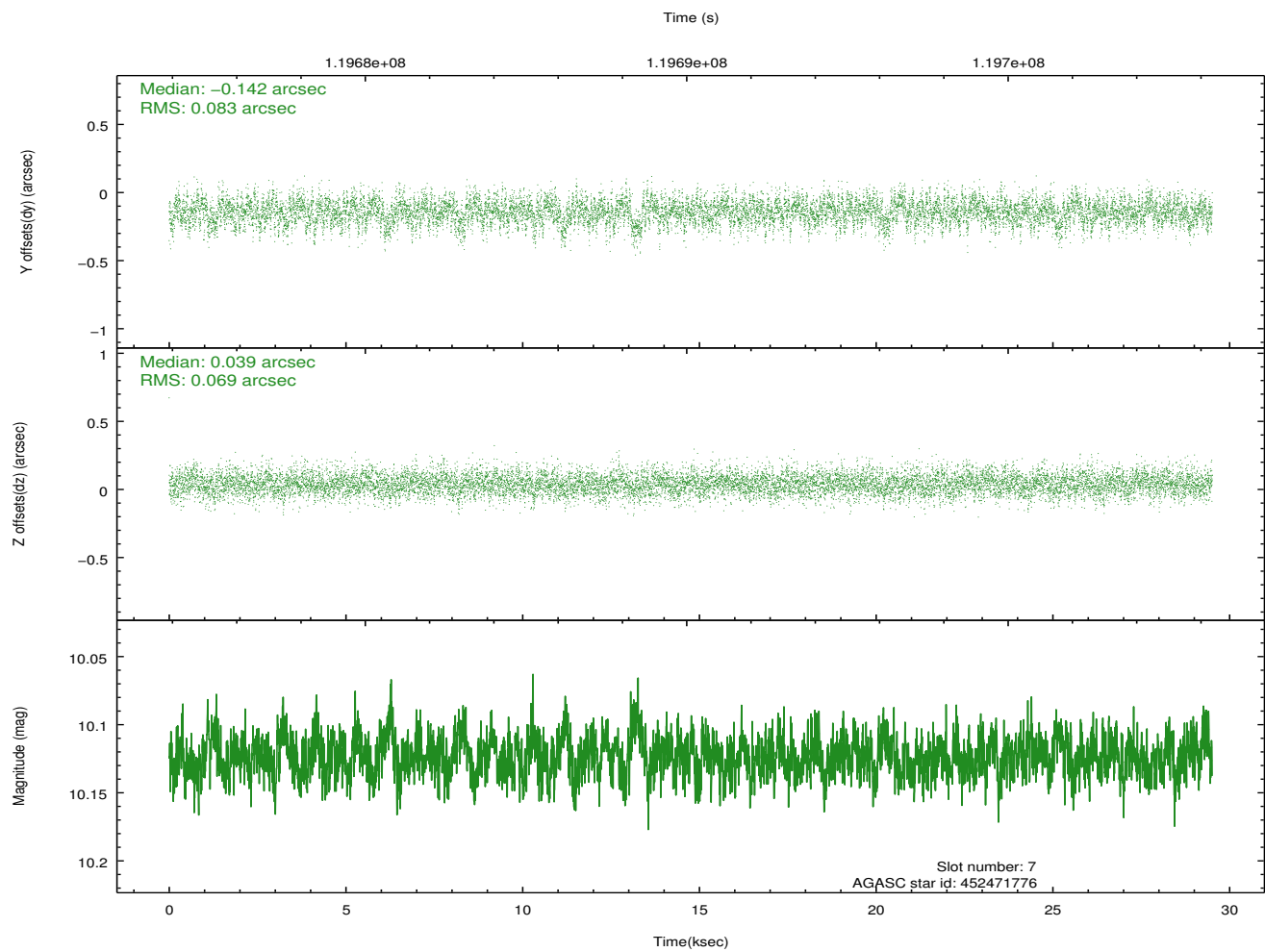
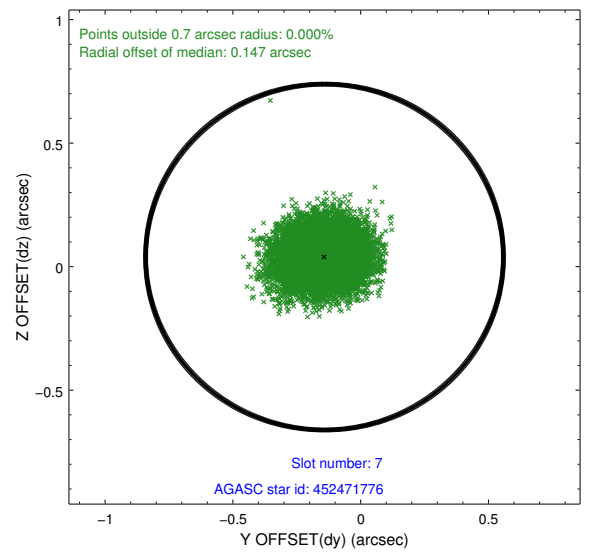
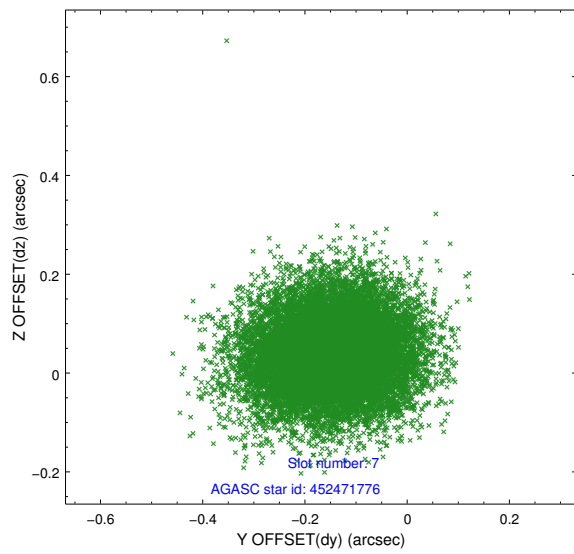
2.4.3 Slot 5



2.4.4 Slot 6

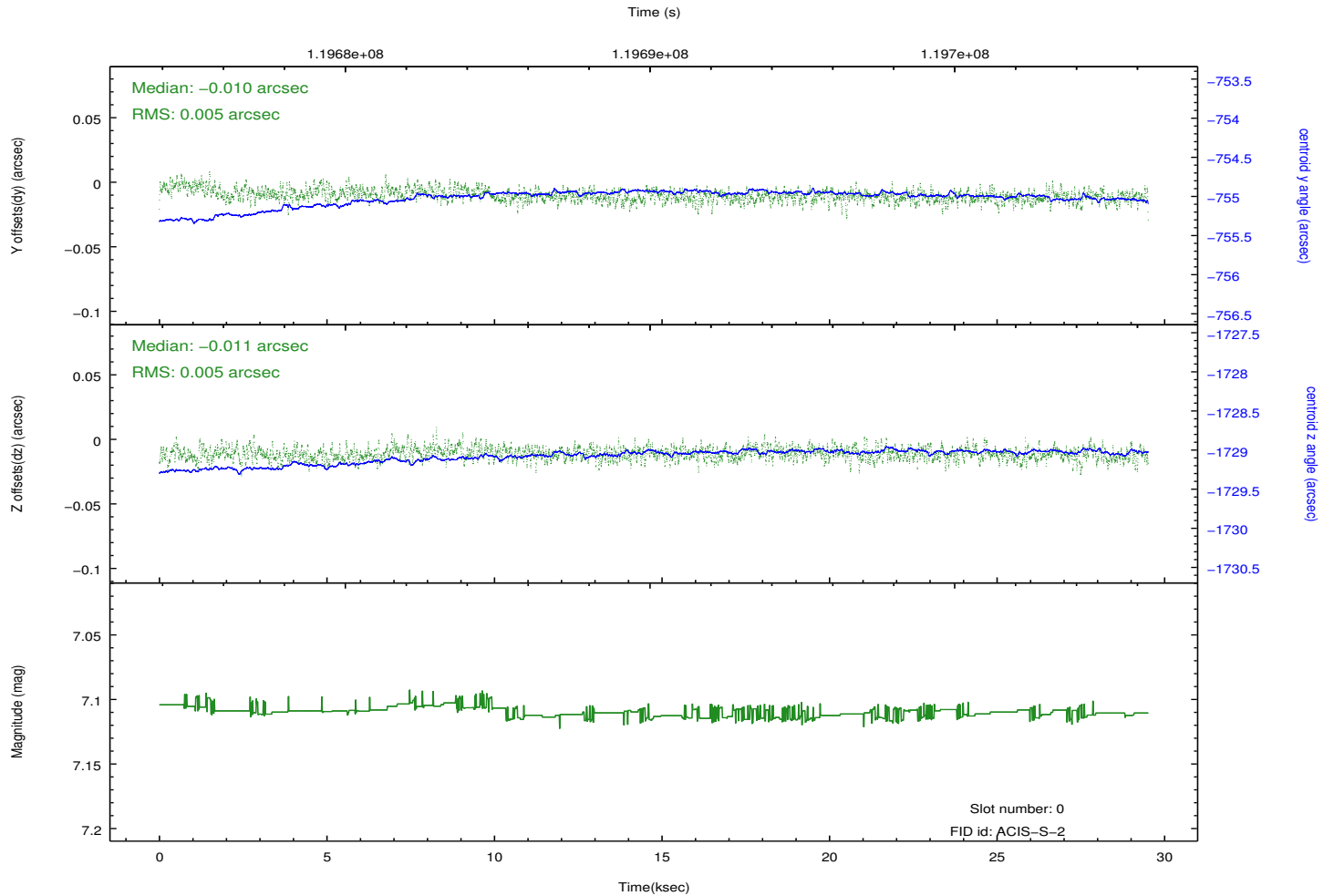
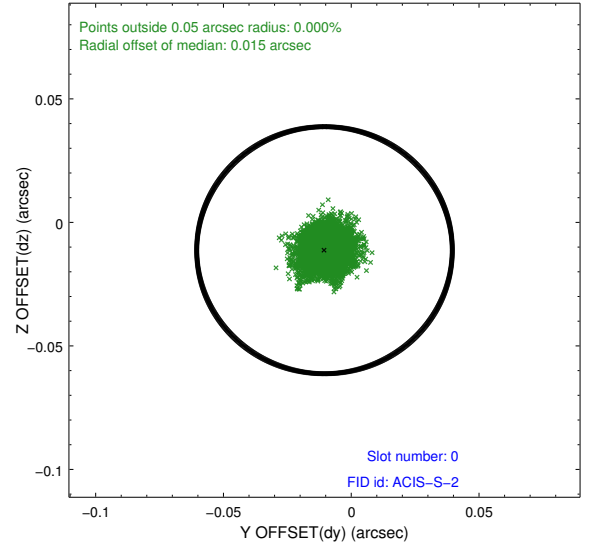
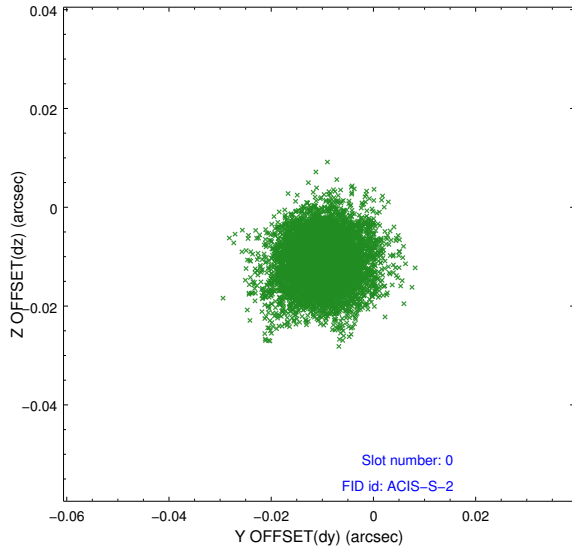


2.4.5 Slot 7

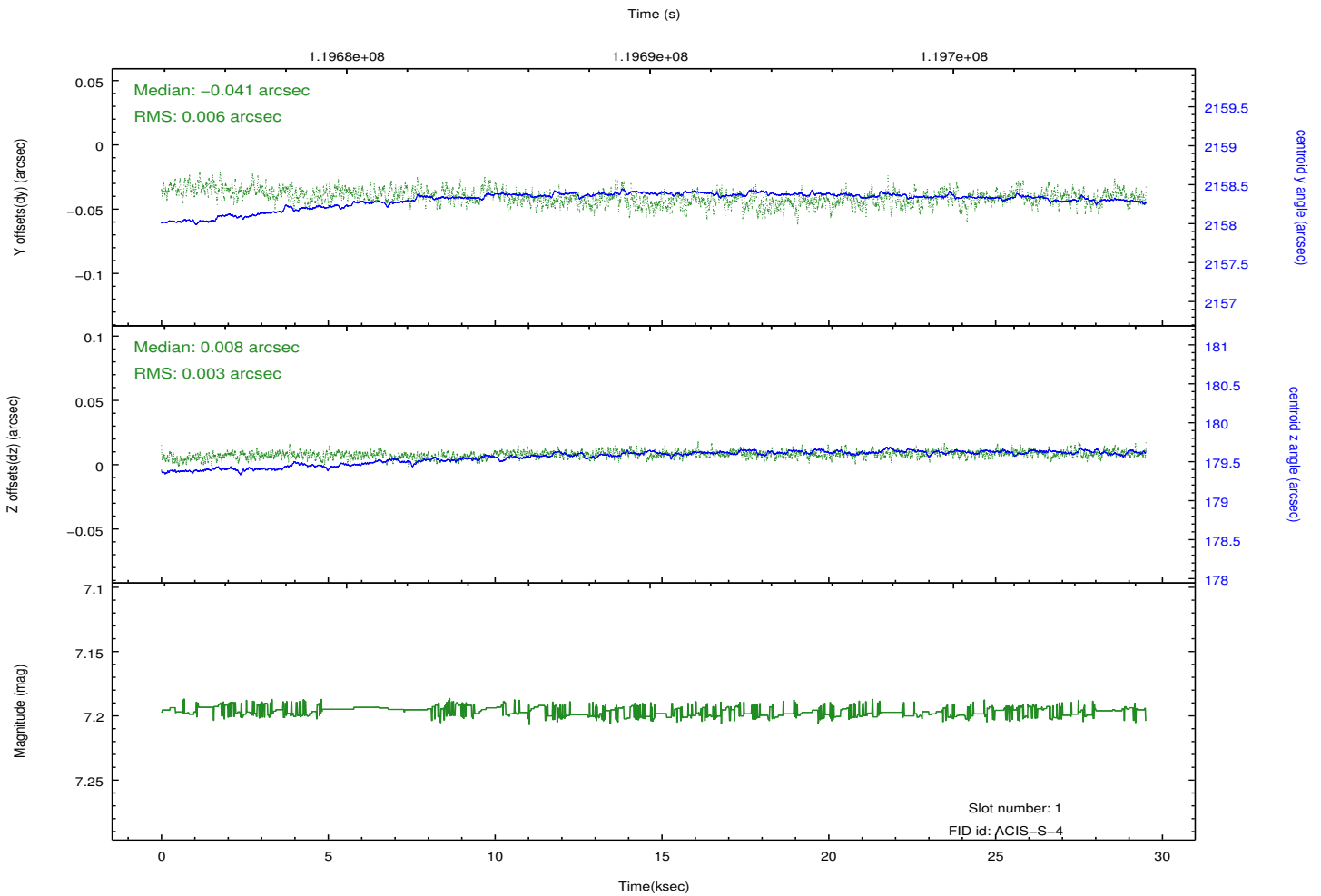
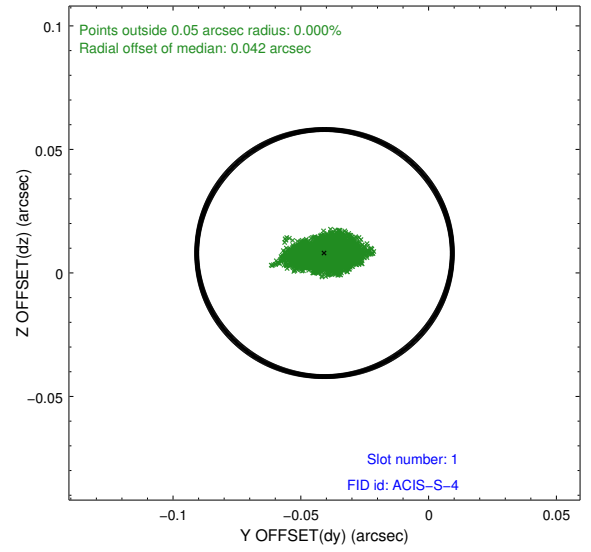
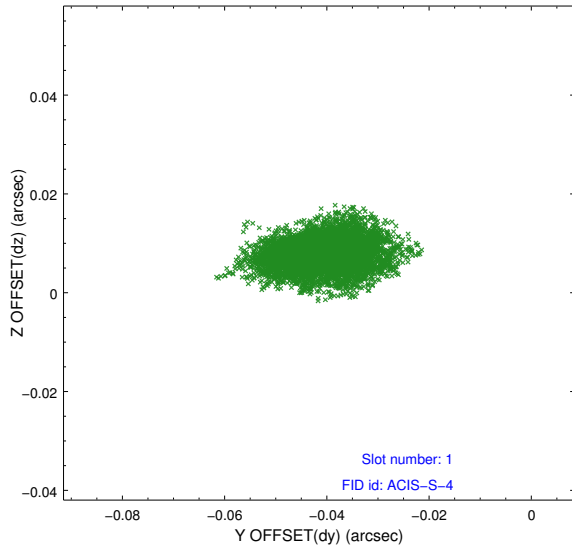


2.5 FID Slots

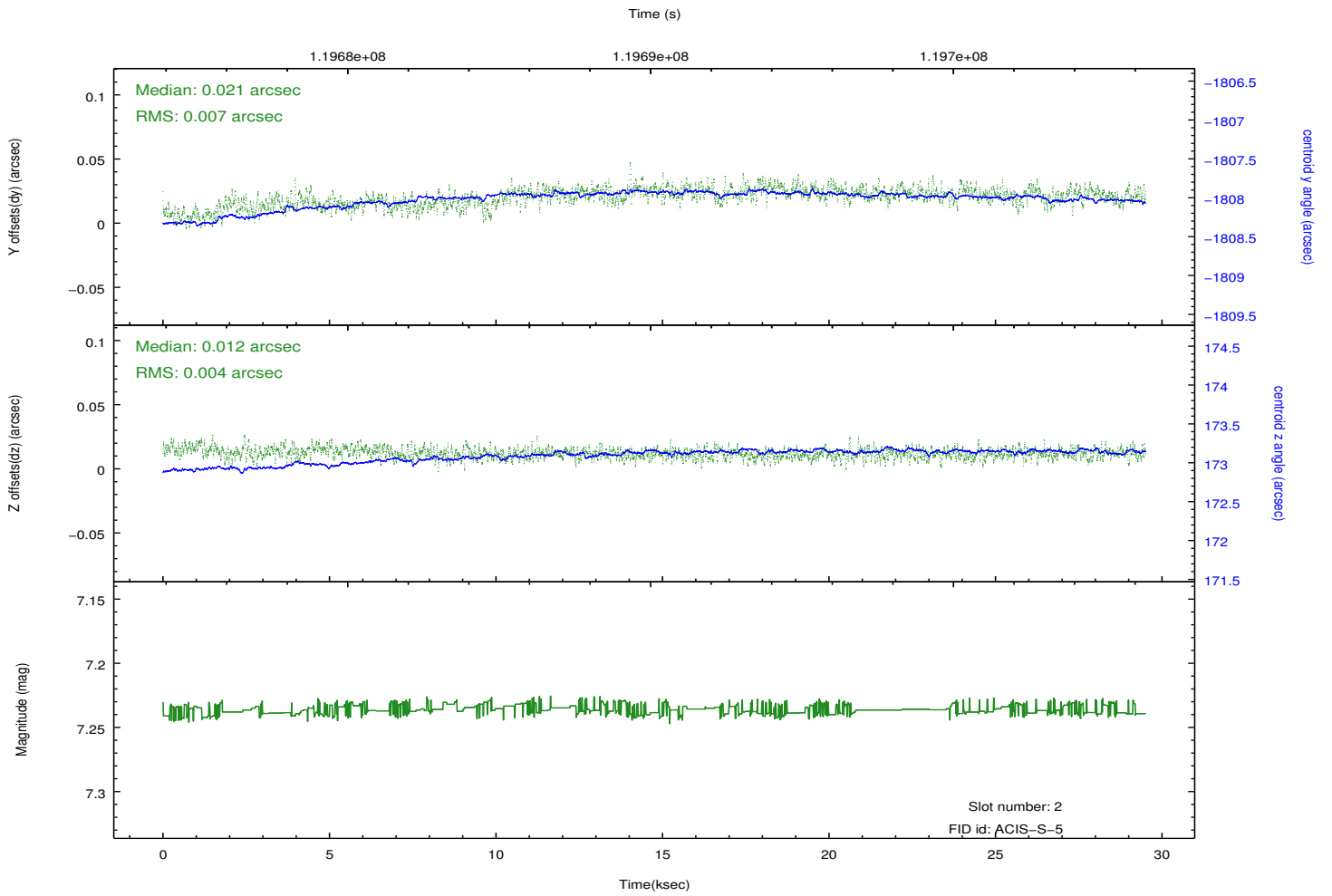
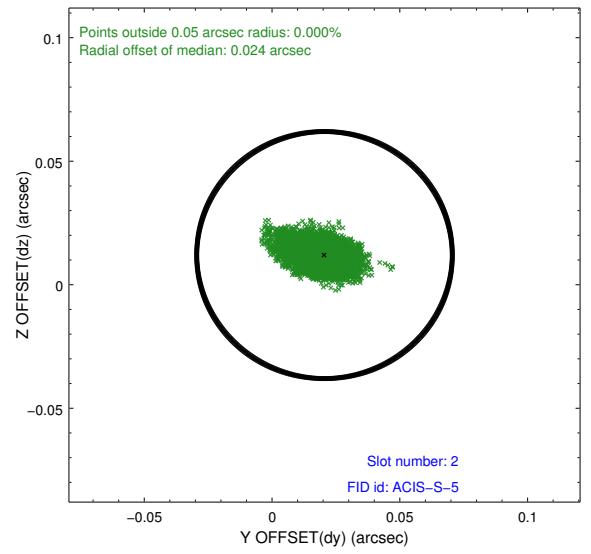
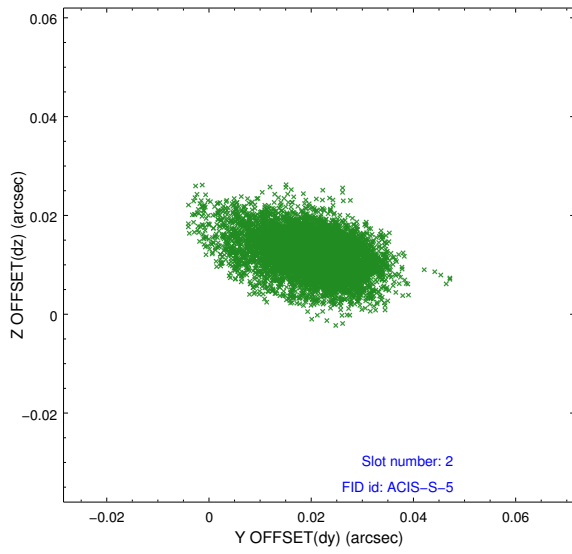
2.5.1 Slot 0



2.5.2 Slot 1



2.5.3 Slot 2



A Summary

A.1 Status

V&V Scientist	Jen Lauer
V&V Date (YYYY-MM-DD)	2012.09.27
V&V Edition	1
V&V Disposition and Status	OK
V&V Charge Time	29.091

A.2 Comments