

V&V Reference Report

L2 ASCDS Version : 8.4.5

Observation 1982 - L2 Version 3
Chandra X-Ray Center

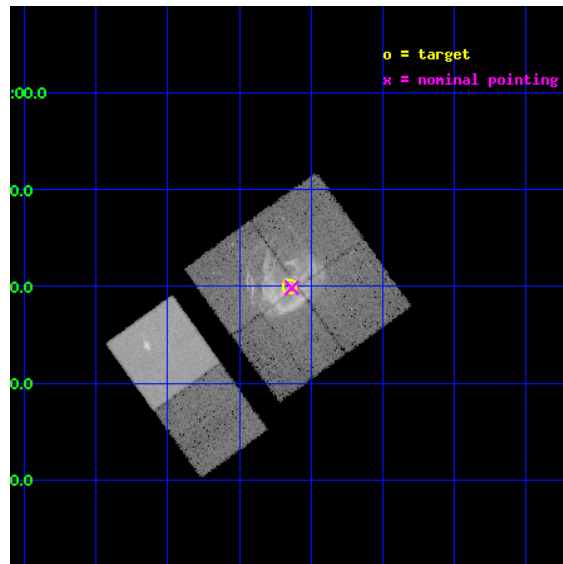
L2 Processing Date : Sep 21 2012

Contents

1	Front	2
2	OBI	3
2.1	OBI	3
2.1.1	Images	3
2.1.2	Bias	3
2.1.3	Parameters	4
2.1.4	Events	4
2.2	Compared Parameters	5
2.3	Aspect	6
2.4	Star Slots	9
2.4.1	Slot 3	9
2.4.2	Slot 4	10
2.4.3	Slot 5	11
2.4.4	Slot 6	12
2.4.5	Slot 7	13
2.5	FID Slots	14
2.5.1	Slot 0	14
2.5.2	Slot 1	15
2.5.3	Slot 2	16
A	Summary	17
A.1	Status	17
A.2	Comments	17

1 Front

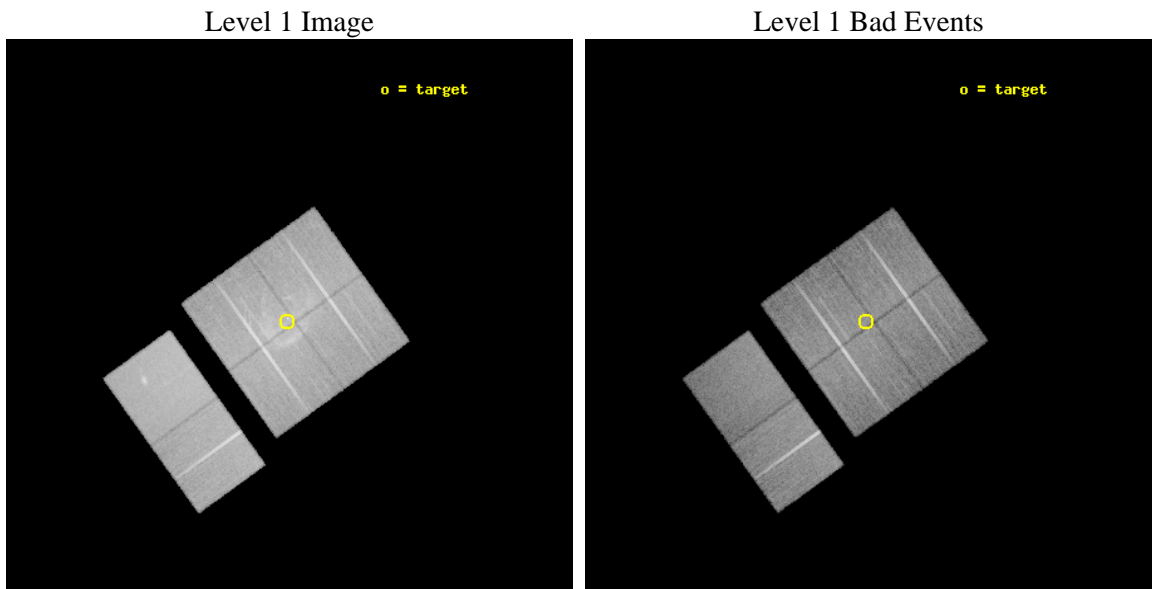
seq_num	500159	Sequence number
obs_id	1982	Observation id
title	THE THERMAL COMPOSITE SNR KES 79	Proposal title
observer	Frederick Seward	Principal investigator
object	KES 79	Source name
dtcycle	0	
cycle	P	events from which exps? Prim/Second/Both
ra_targ	283.1625	Observer's specified target RA [deg]
dec_targ	0.666667	Observer's specified target Dec [deg]
ra_nom	283.15845994435	Nominal RA [deg]
dec_nom	0.66422744136328	Nominal Dec [deg]
roll_nom	234.29112734235	Nominal Roll [deg]
revision	3	Processing version of data
ontime	29947.678710669	Sum of GTIs [s]
livetime	29568.463170508	Livetime [s]
ontime0	29947.555590674	Sum of GTIs [s]
ontime1	29947.596630678	Sum of GTIs [s]
ontime2	29947.637670681	Sum of GTIs [s]
ontime3	29947.678710669	Sum of GTIs [s]
ontime6	29947.760790676	Sum of GTIs [s]
ontime7	29947.719750673	Sum of GTIs [s]
l2events	267999	Number of level 2 events



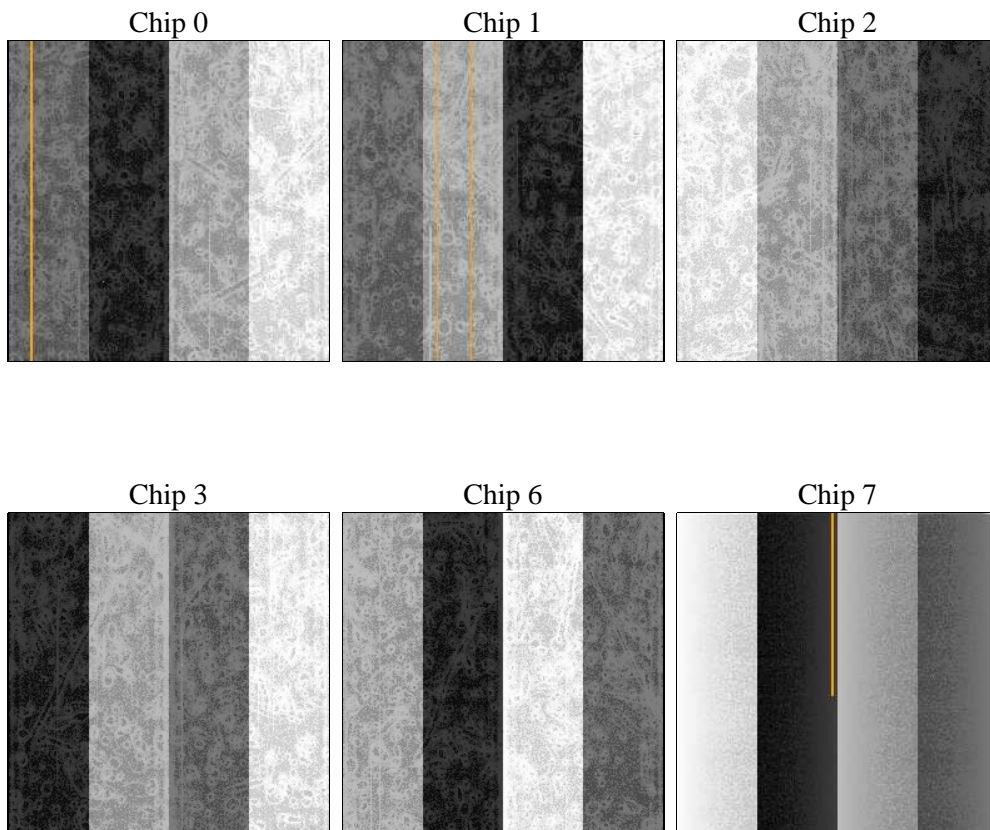
2 OBI

2.1 OBI

2.1.1 Images



2.1.2 Bias



2.1.3 Parameters

obi_num	0	Obi number	sched_exp_time	30000.000000	[s] Scheduled observation exposure time
ascdsver	8.4.5	Processing system revision	ontime	29947.678710669	Sum of GTIs [s]
caldbver	4.5.1.1	 	ontime0	29947.555590674	Sum of GTIs [s]
date	2012-09-21T11:13:38	Date and time of file creation	ontime1	29947.596630678	Sum of GTIs [s]
revision	3	Processing version of data	ontime2	29947.637670681	Sum of GTIs [s]
			ontime3	29947.678710669	Sum of GTIs [s]
			ontime6	29947.760790676	Sum of GTIs [s]
			ontime7	29947.719750673	Sum of GTIs [s]
			l1events	1315513	Number of level 1 events

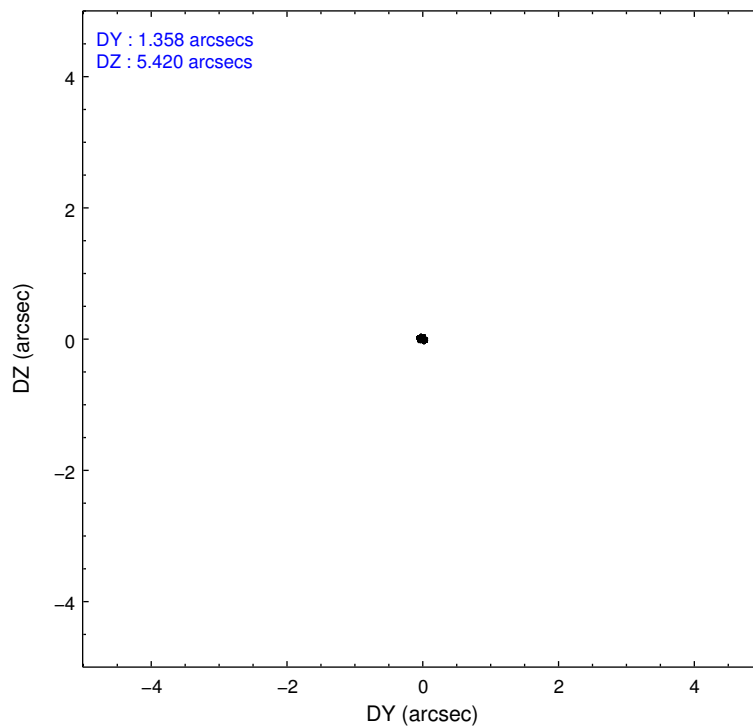
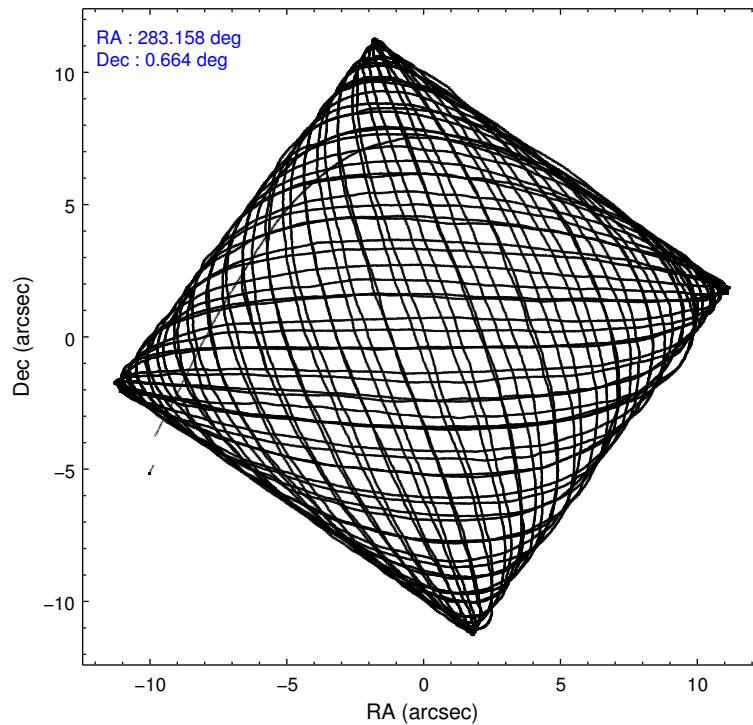
2.1.4 Events

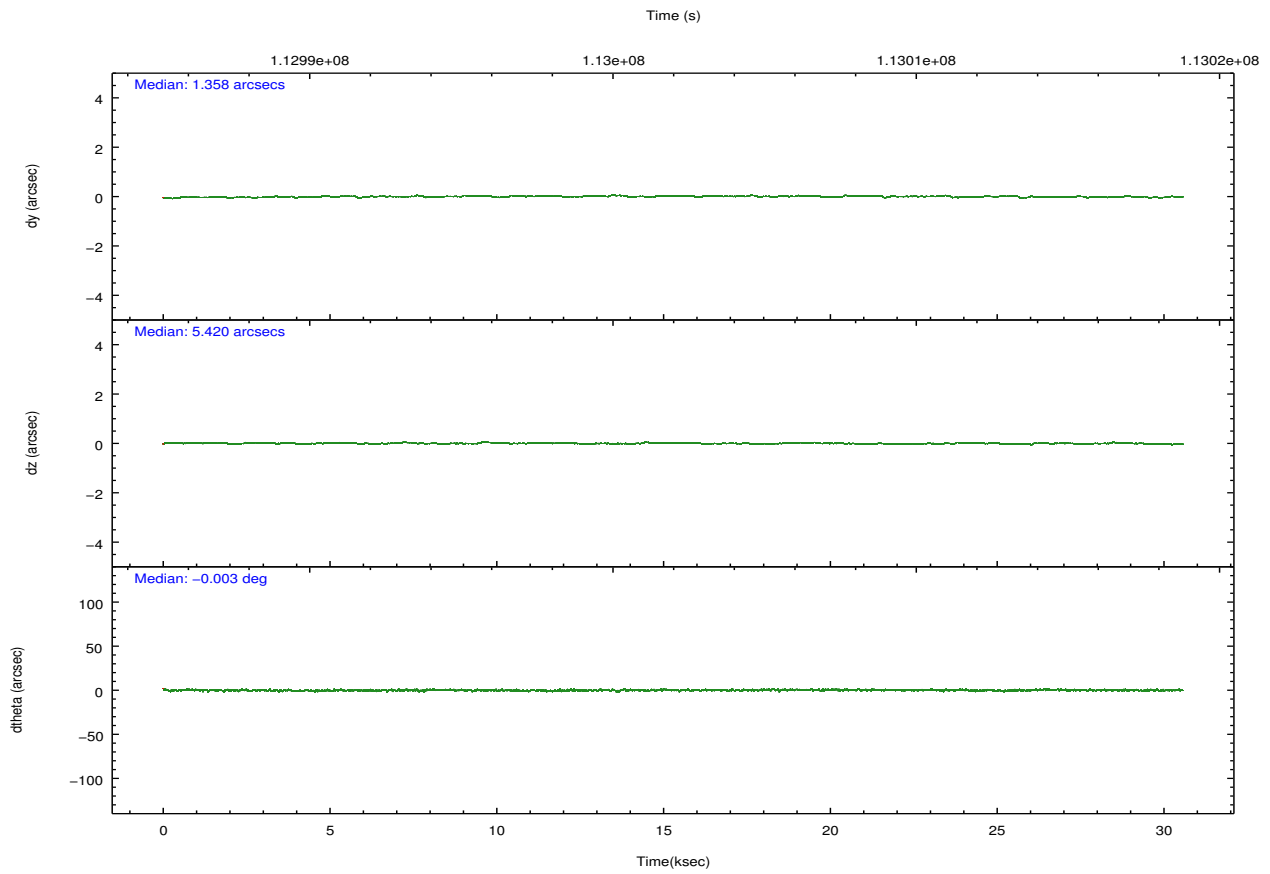
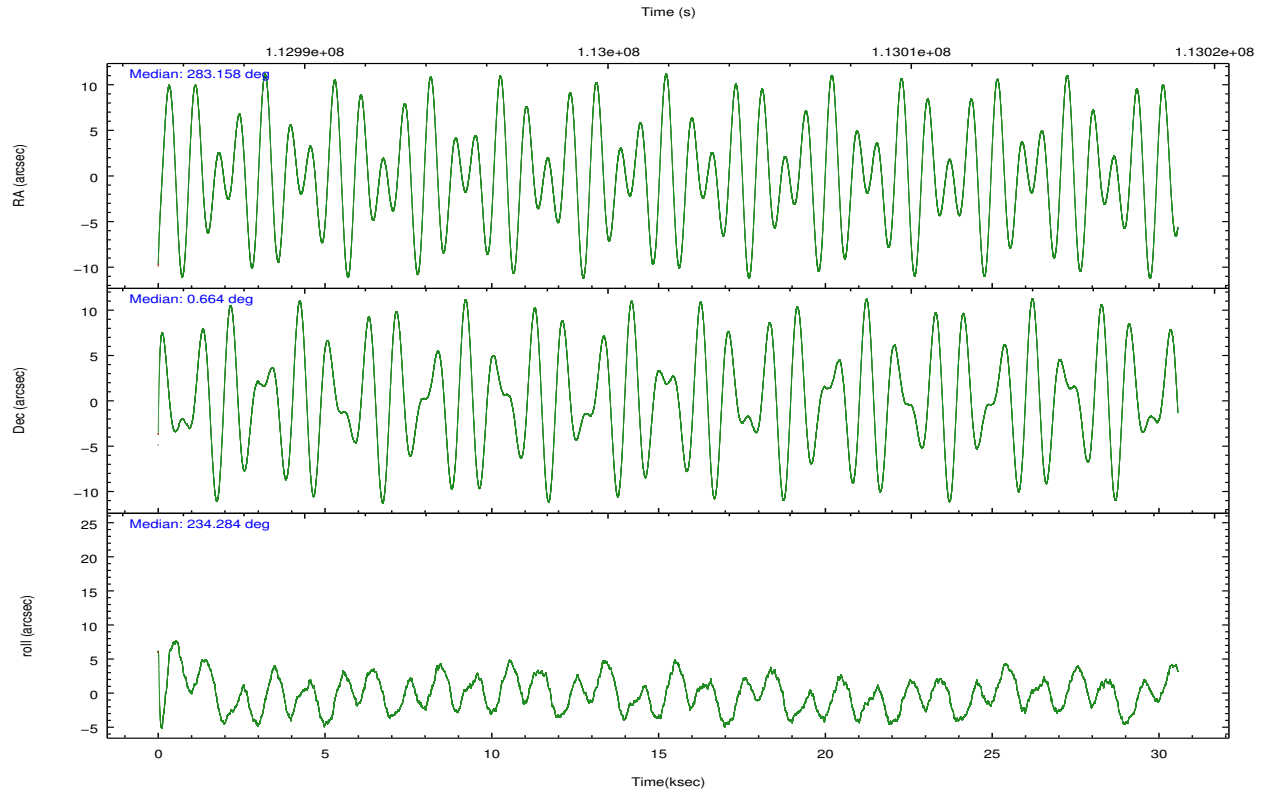
	ccd 0	ccd 1	ccd 2	ccd 3	ccd 6	ccd 7		ccd 0	ccd 1	ccd 2	ccd 3	ccd 6	ccd 7
level 1 events	190765	205243	217955	226490	215009	260051	grade 0 events	16505	21075	23326	31765	10153	11109
rejected events	159491	167484	179228	177906	190753	149857		8%	10%	10%	14%	4%	4%
rejected %	83%	81%	82%	78%	88%	57%	grade 1 events	134	140	157	203	84	217
								0%	0%	0%	0%	0%	0%
							grade 2 events	5631	6282	6257	6851	4912	21961
								2%	3%	2%	3%	2%	8%
							grade 3 events	2600	2838	2572	2783	2324	10057
								1%	1%	1%	1%	1%	3%
							grade 4 events	2352	2886	2538	2837	2332	10108
								1%	1%	1%	1%	1%	3%
							grade 5 events	7354	7642	6818	7846	8697	24519
								3%	3%	3%	3%	4%	9%
							grade 6 events	4192	4685	4041	4357	4544	56993
								2%	2%	1%	1%	2%	21%
							grade 7 events	151997	159695	172246	169848	181963	125087
								79%	77%	79%	74%	84%	48%

2.2 Compared Parameters

Parameter	Planned	Actual	Parameter	Planned	Actual
Instrument	ACIS	ACIS	Obspar format version number	7	7
Detector	ACIS-012367	ACIS-012367	Obspar file type	PREDICTED	ACTUAL
Grating	NONE	NONE	Obspar update status	NONE	UPDATED
Data mode	FAINT	FAINT	Number of optional ACIS chips dropped	0	0
Observation mode	POINTING	POINTING	On-chip summing requested	N	N
[deg] Pointing RA	283.161158	283.1584599443473	Subarray requested	NONE	NONE
[deg] Pointing Dec	0.691511	0.6642274413632796	Alternating exposures requested	N	N
[deg] Pointing Roll	234.082404	234.2911273423539	[s] Primary exposure time	0.000000	3.2
[mm] SIM focus pos	-0.782348	-0.7809083437167272			
[mm] SIM defocus	0	0.001439871863259334			
[mm] SIM translation stage pos	-233.592463	-233.5874344608287			
[mm] SIM translation stage offset	0	-0.005018542100998502			
[s] Observation start time (MET)	112987264.184000	112986115.29808			
Observation start date	2001-07-31T17:20:00	2001-07-31T17:01:55			
[s] Observation end time (MET)	113017264.184000	113018227.01184			
Observation end date	2001-08-01T01:40:00	2001-08-01T01:57:07			
Read mode	TIMED	TIMED			

2.3 Aspect



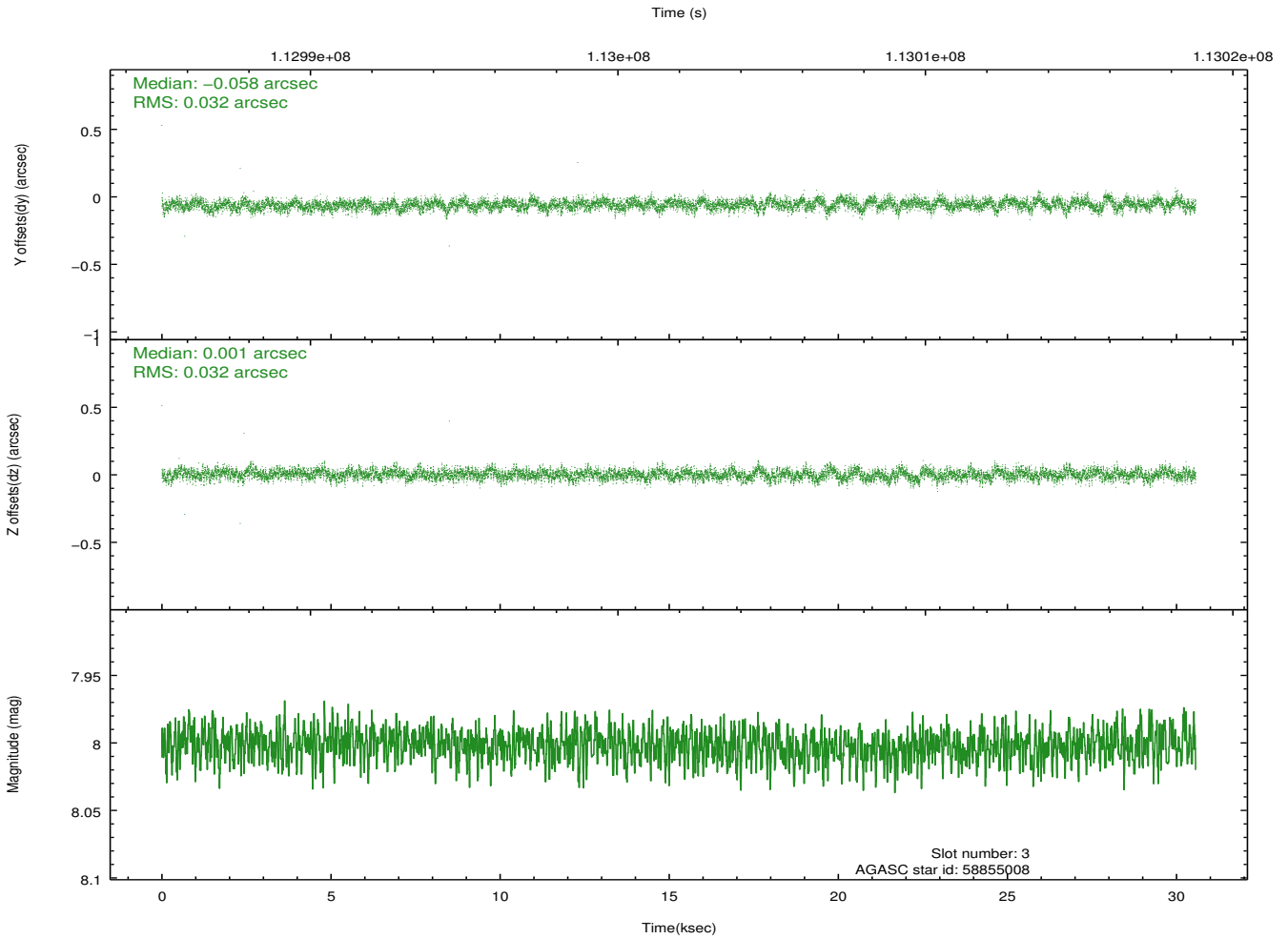
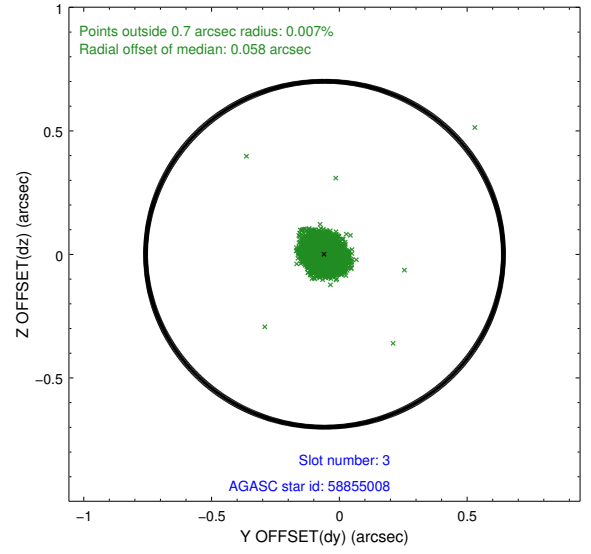
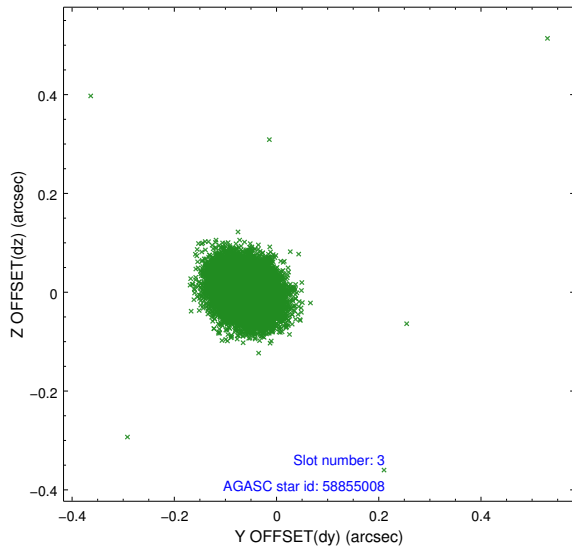


Slot Statistics

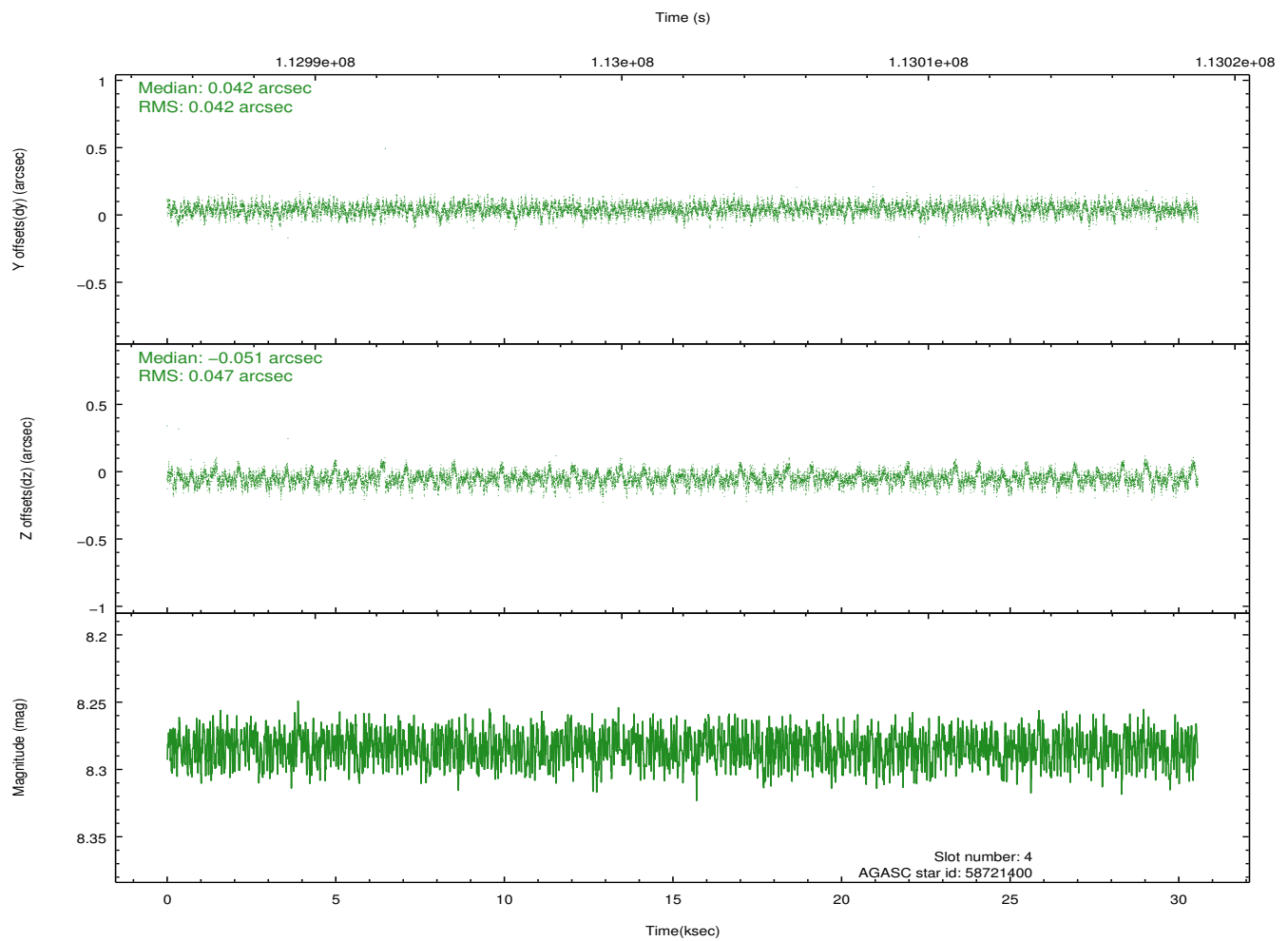
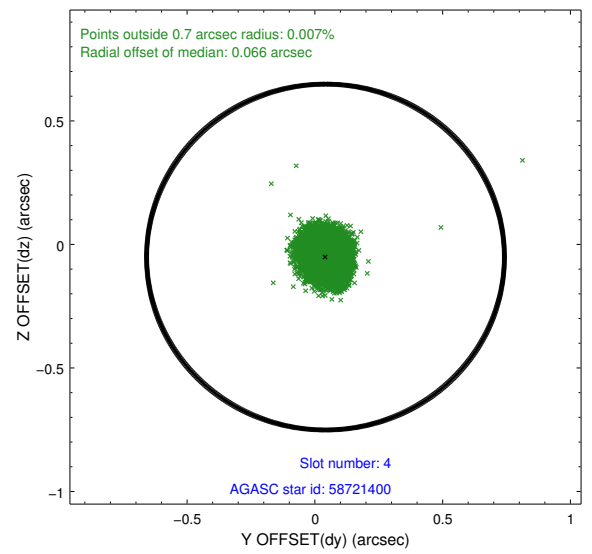
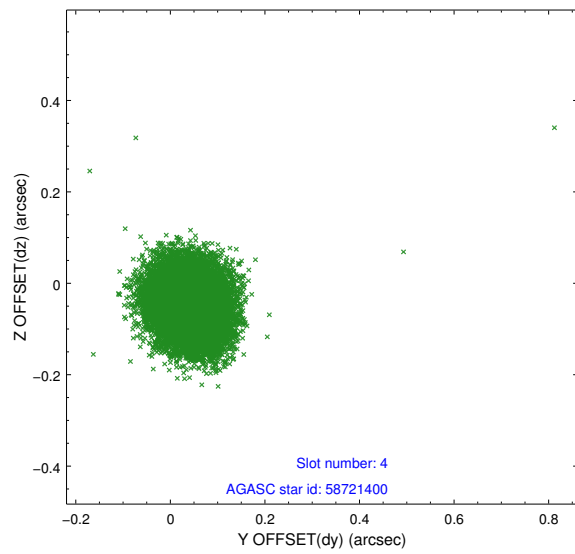
slot	status	id	mag	n_pts	med_dy	med_dz	dr1	dr2	ra	dec	mean_y	mean_z
0	FID	ACIS-I-2	7.15	7456	-0.027	-0.052	0.009	0.016	0.000000	0.000000	-755.71	-835.19
1	FID	ACIS-I-4	7.19	7457	-0.028	0.038	0.006	0.010	0.000000	0.000000	2158.30	1071.06
2	FID	ACIS-I-5	7.23	7457	-0.046	0.083	0.009	0.016	0.000000	0.000000	-1809.48	1069.00
3	GUIDE	58855008	8.00	14911	-0.058	0.001	0.047	0.077	283.247859	0.051069	1684.25	1606.30
4	GUIDE	58721400	8.28	14910	0.042	-0.051	0.067	0.109	282.817104	0.833240	313.86	-1301.44
5	GUIDE	58720272	9.14	14903	0.138	0.054	0.073	0.118	282.926317	0.546362	919.64	-377.29
6	GUIDE	58720424	9.00	14903	-0.115	-0.003	0.098	0.146	282.873634	1.408205	-1482.06	-2351.09
7	GUIDE	58857104	9.20	14907	-0.010	-0.005	0.090	0.142	283.814800	0.638238	-1225.20	2018.43

2.4 Star Slots

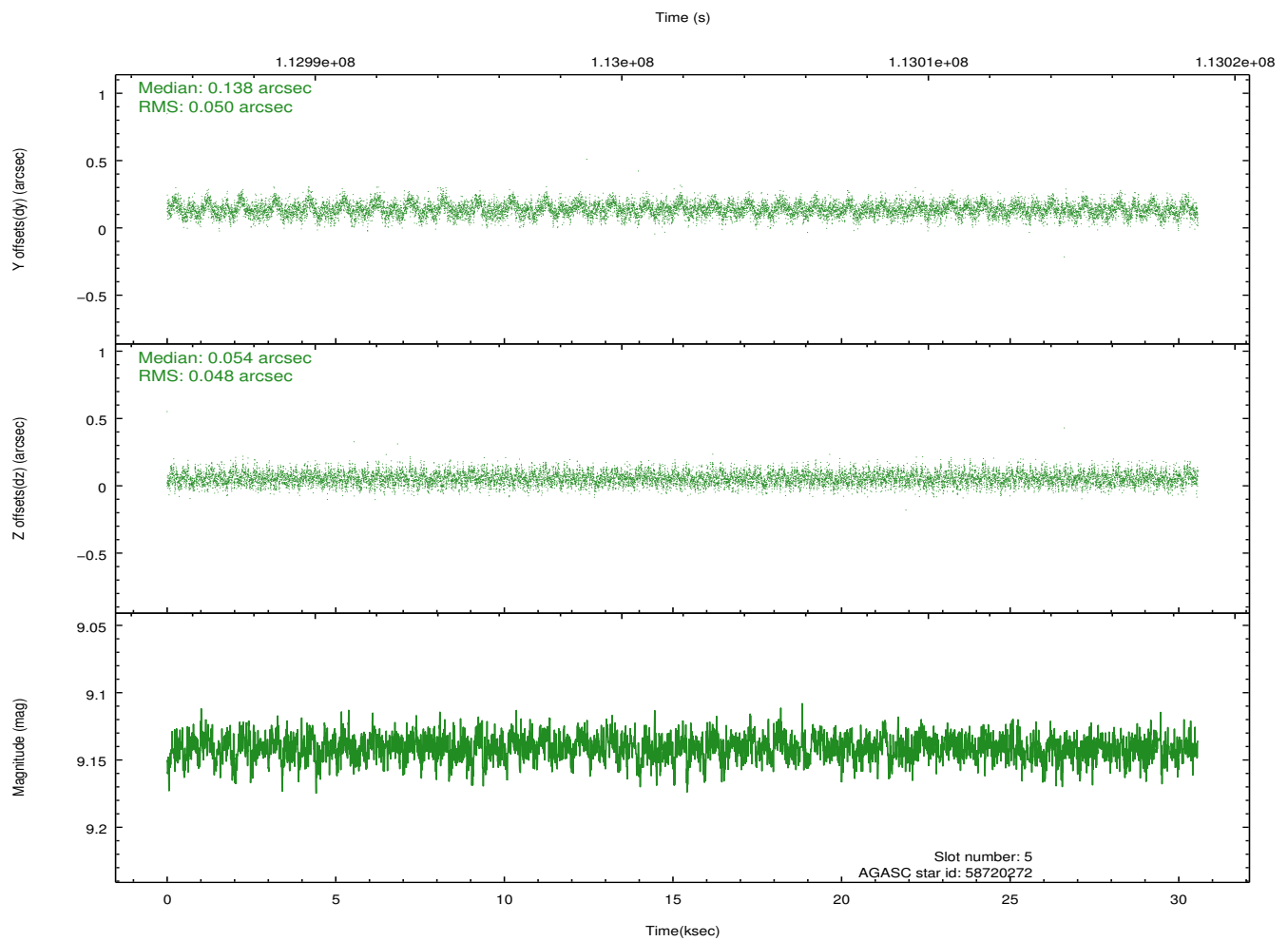
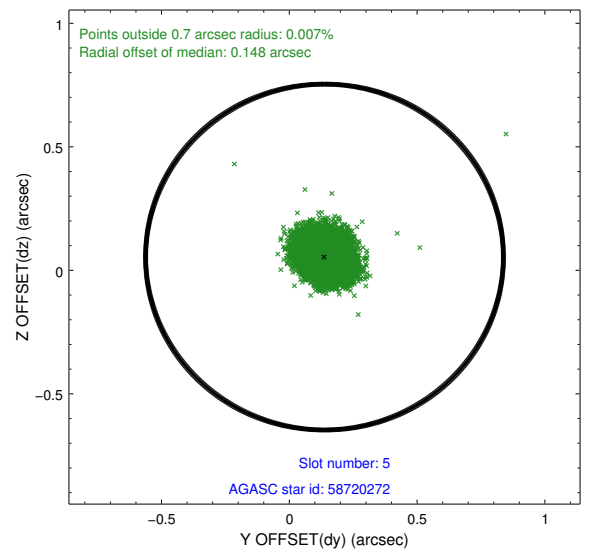
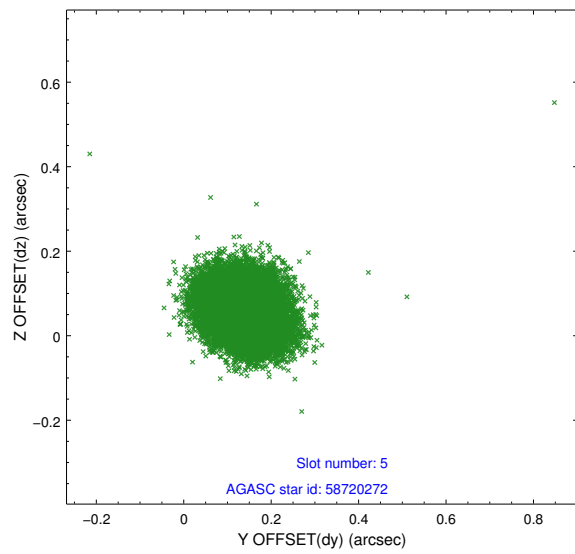
2.4.1 Slot 3



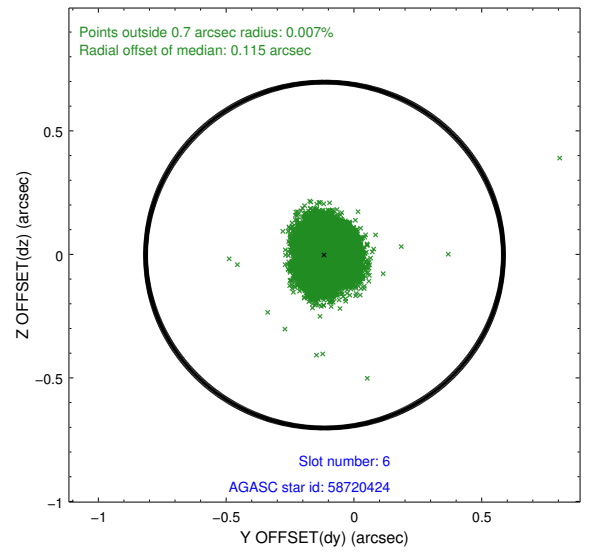
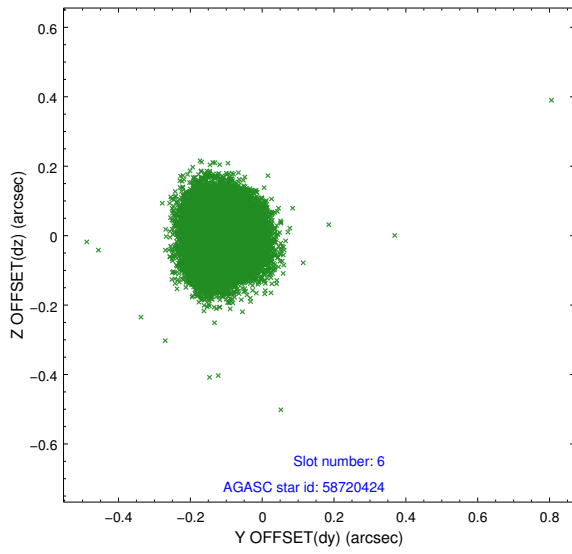
2.4.2 Slot 4



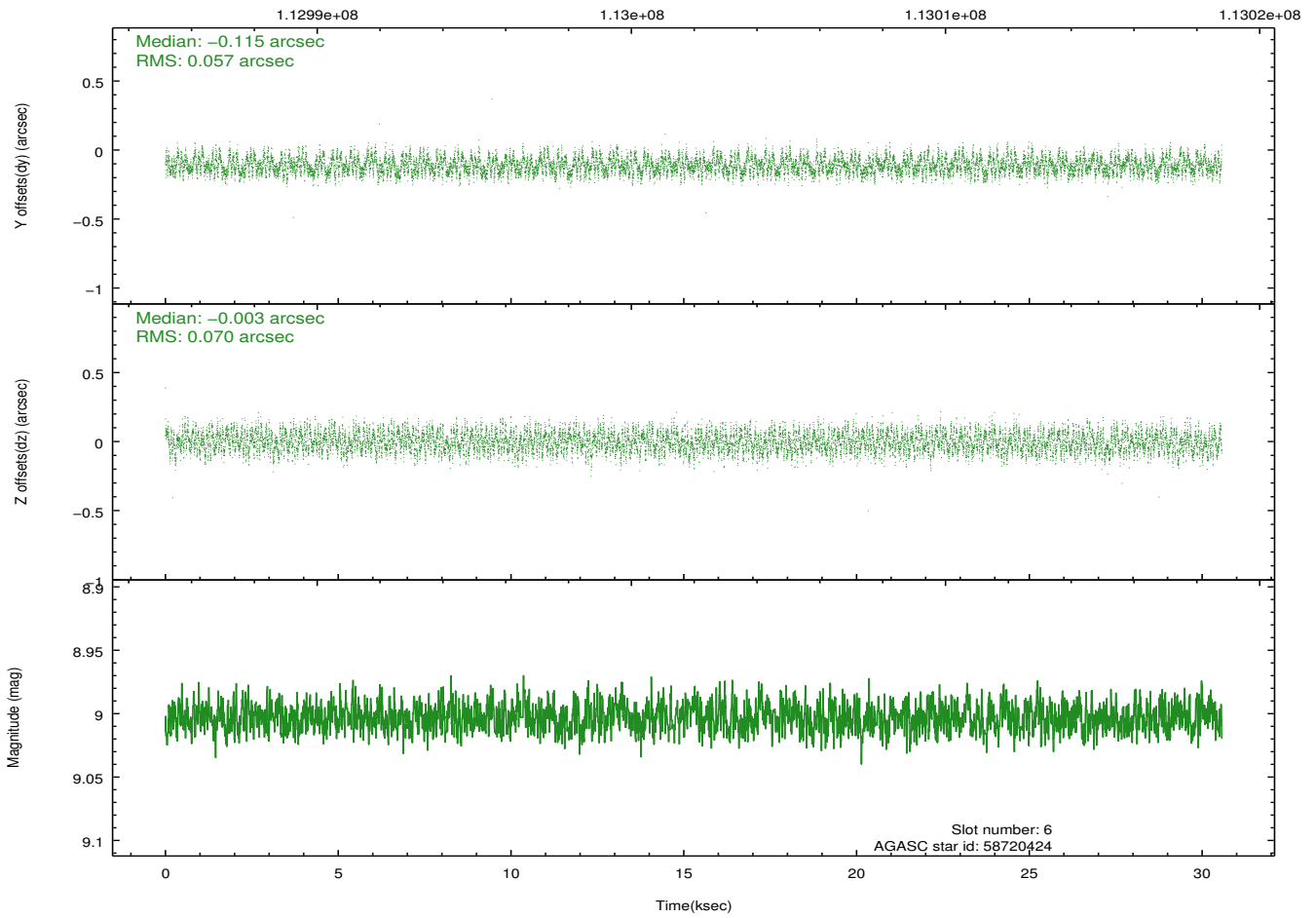
2.4.3 Slot 5



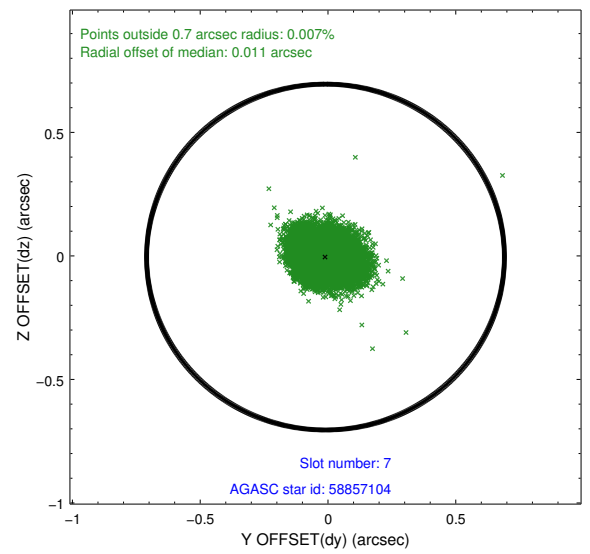
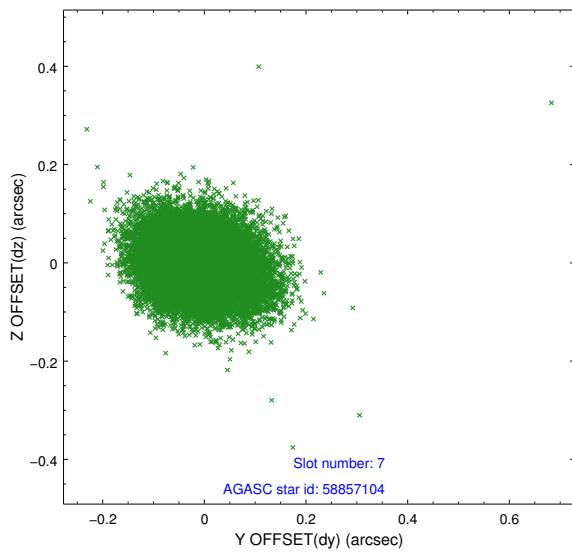
2.4.4 Slot 6



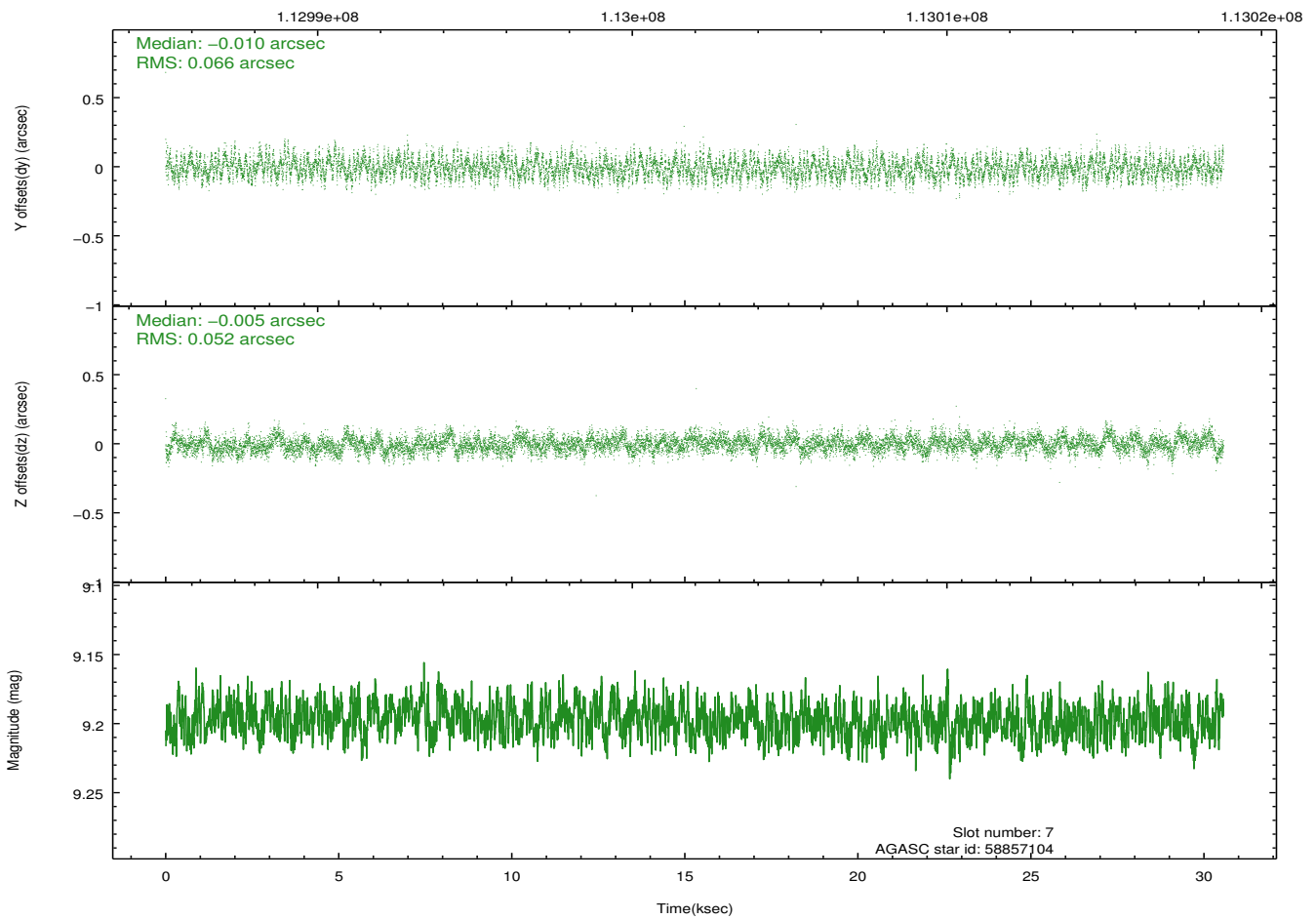
Time (s)



2.4.5 Slot 7

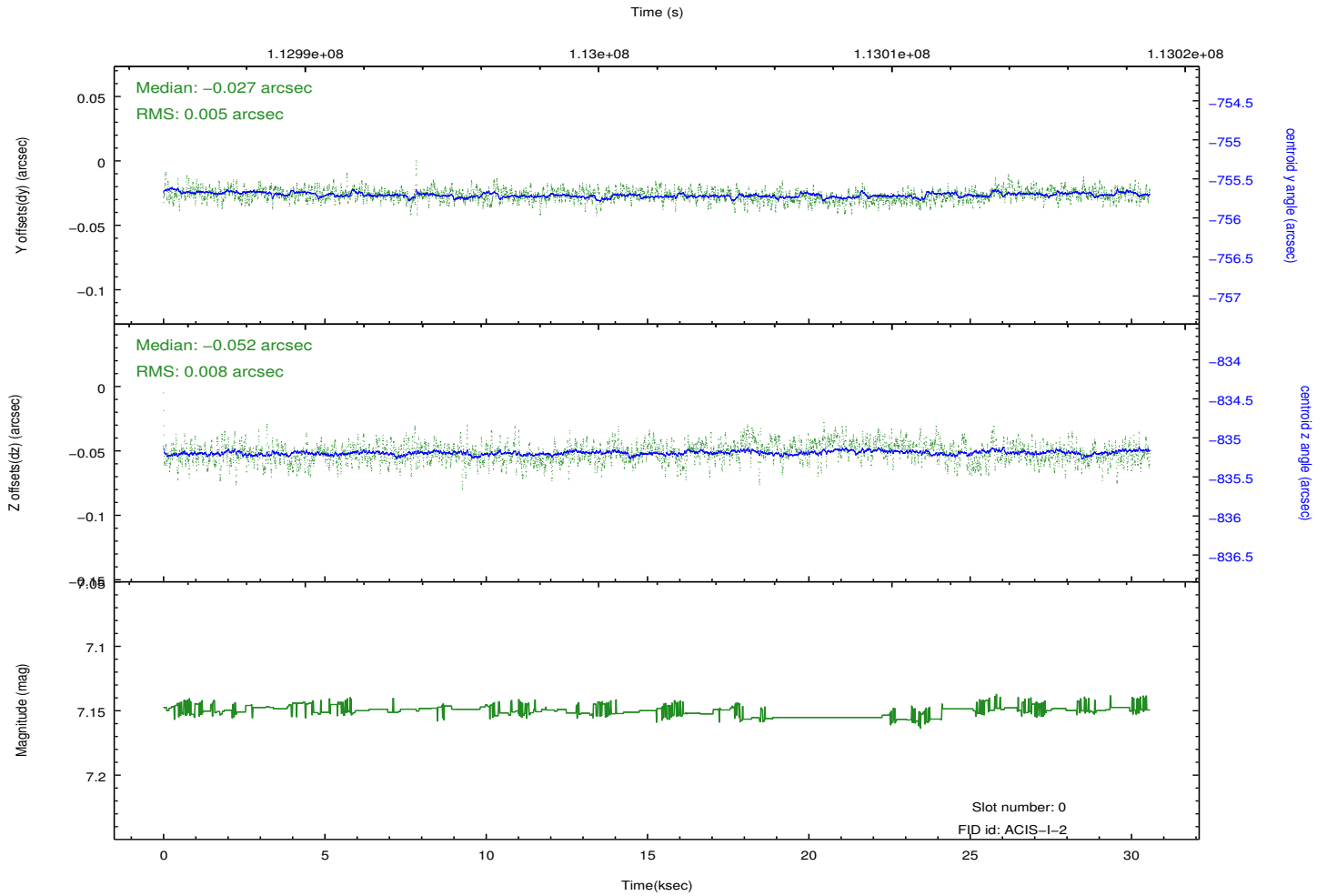
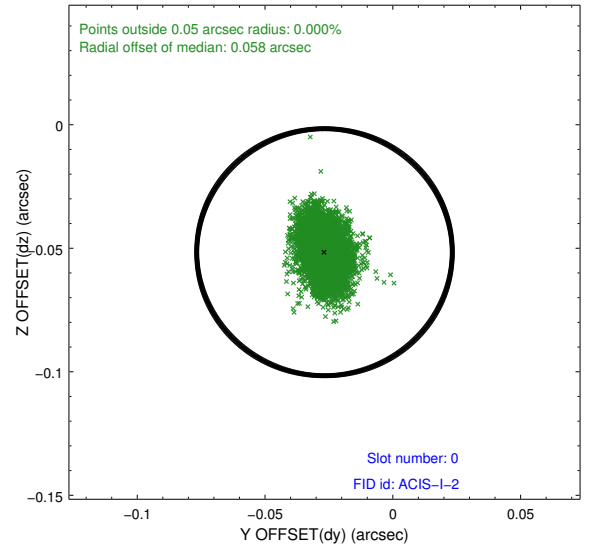
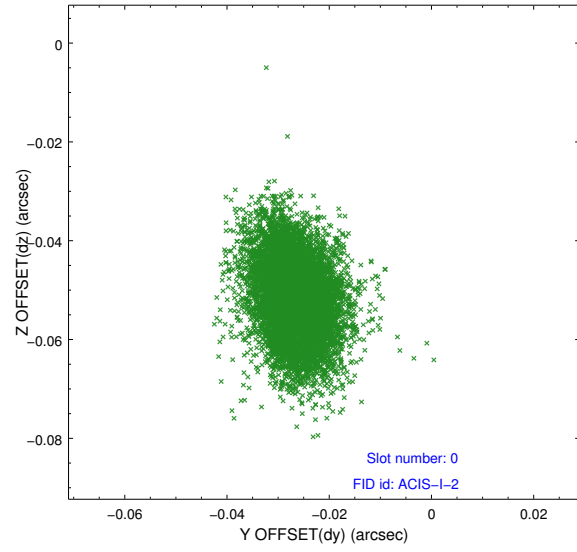


Time (s)

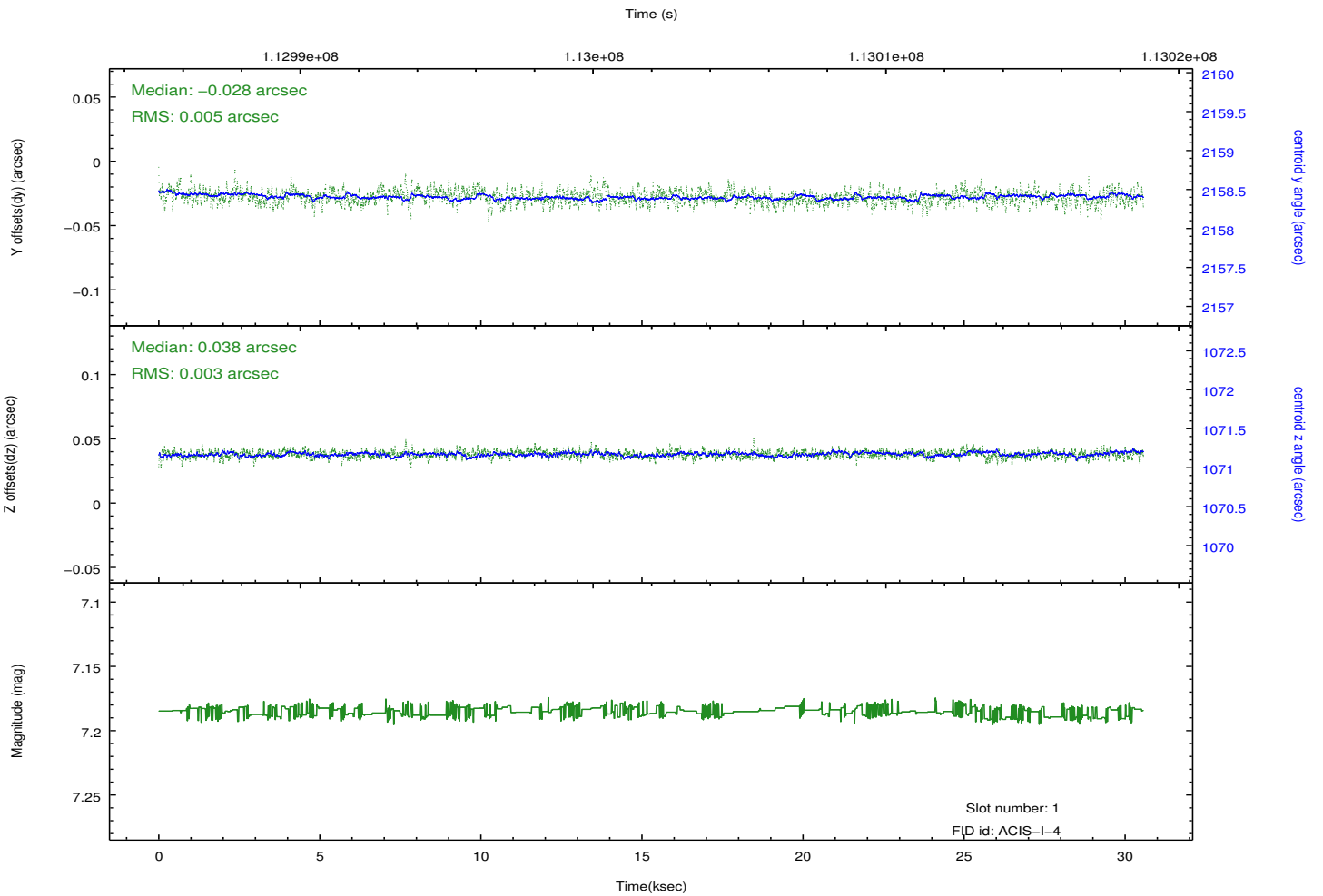
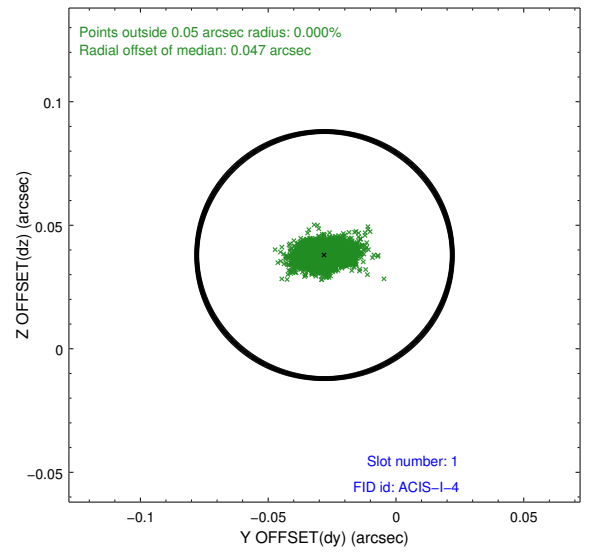
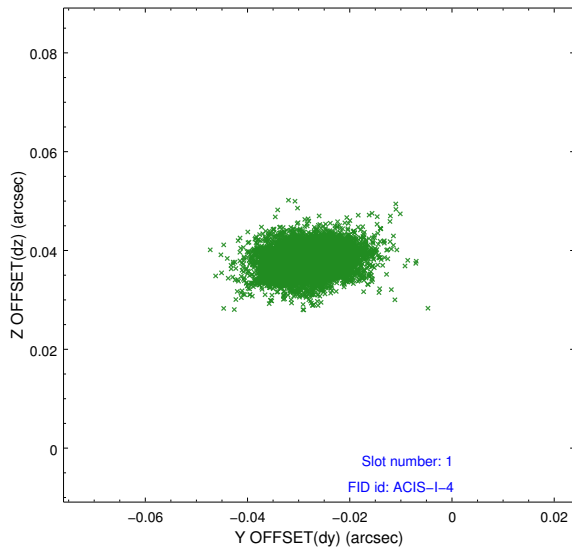


2.5 FID Slots

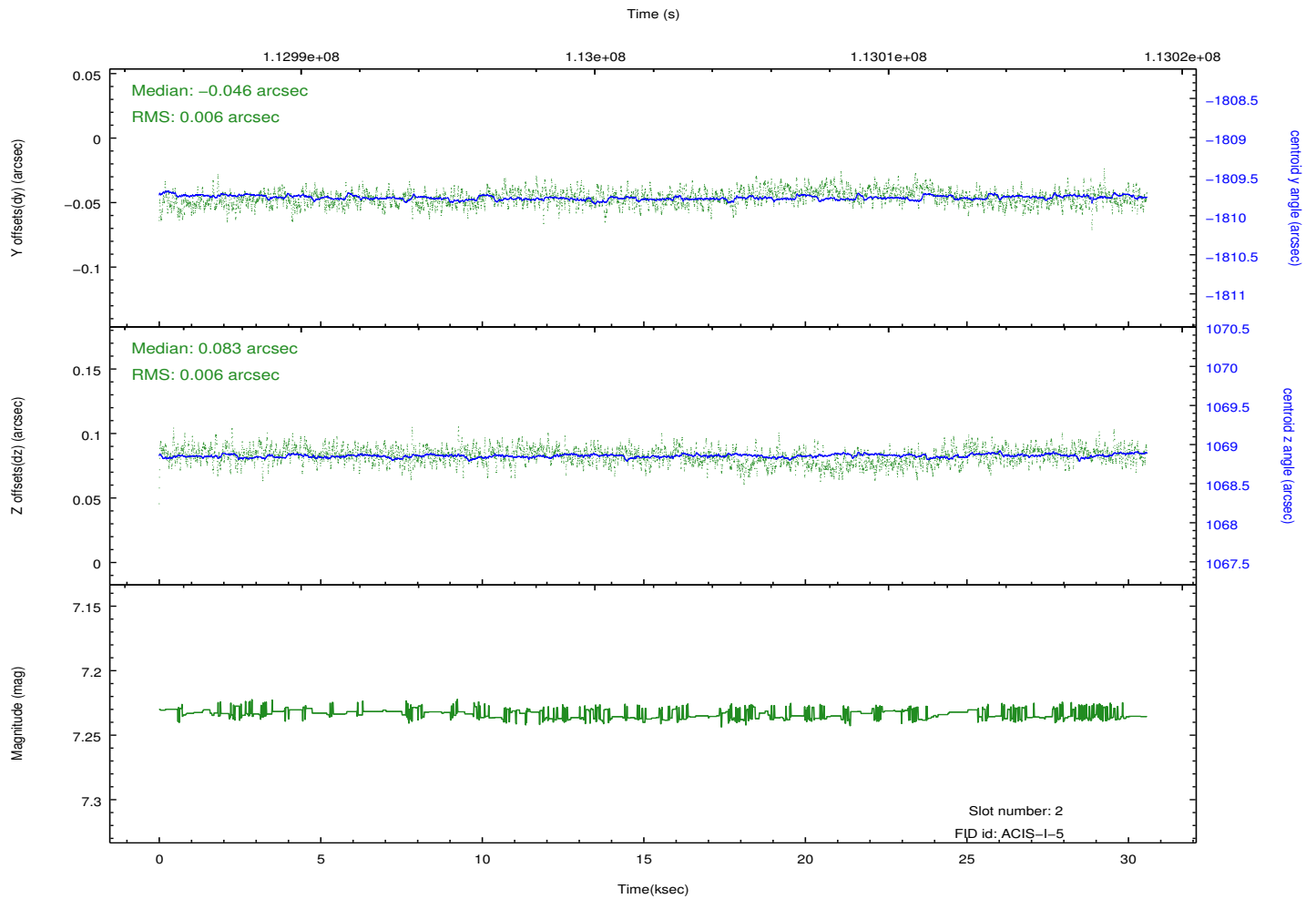
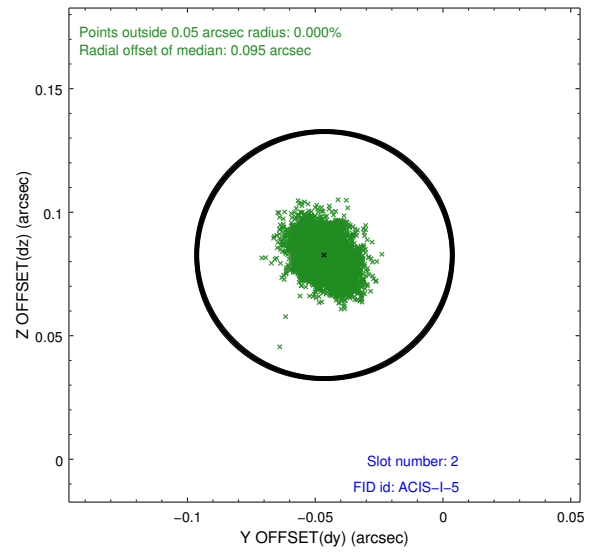
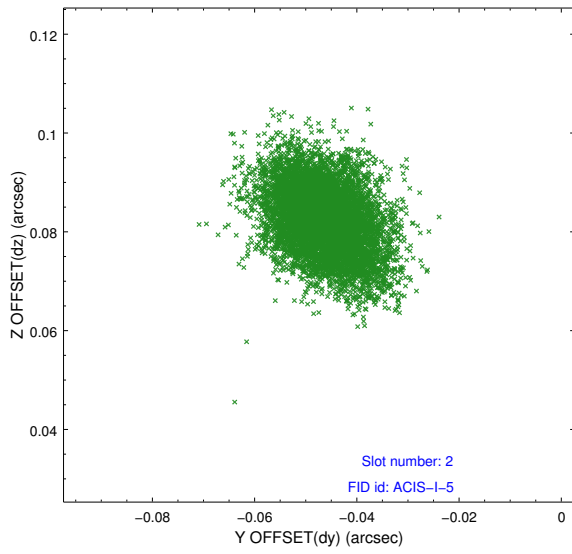
2.5.1 Slot 0



2.5.2 Slot 1



2.5.3 Slot 2



A Summary

A.1 Status

V&V Scientist	Jen Lauer
V&V Date (YYYY-MM-DD)	2012.09.25
V&V Edition	1
V&V Disposition and Status	OK
V&V Charge Time	29.948

A.2 Comments