

V&V Reference Report

L2 ASCDS Version : 8.4.5

Observation 2062 - L2 Version 3
Chandra X-Ray Center

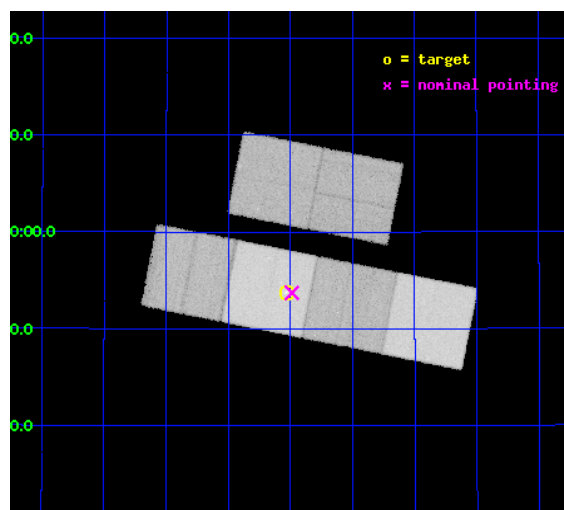
L2 Processing Date : Sep 14 2012

Contents

1	Front	2
2	OBI	3
2.1	OBI	3
2.1.1	Images	3
2.1.2	Bias	3
2.1.3	Parameters	4
2.1.4	Events	4
2.2	Compared Parameters	5
2.3	Aspect	6
2.4	Star Slots	9
2.4.1	Slot 4	9
2.4.2	Slot 5	10
2.4.3	Slot 7	11
2.5	FID Slots	12
2.5.1	Slot 0	12
2.5.2	Slot 1	13
2.5.3	Slot 2	14
A	Summary	15
A.1	Status	15
A.2	Comments	15

1 Front

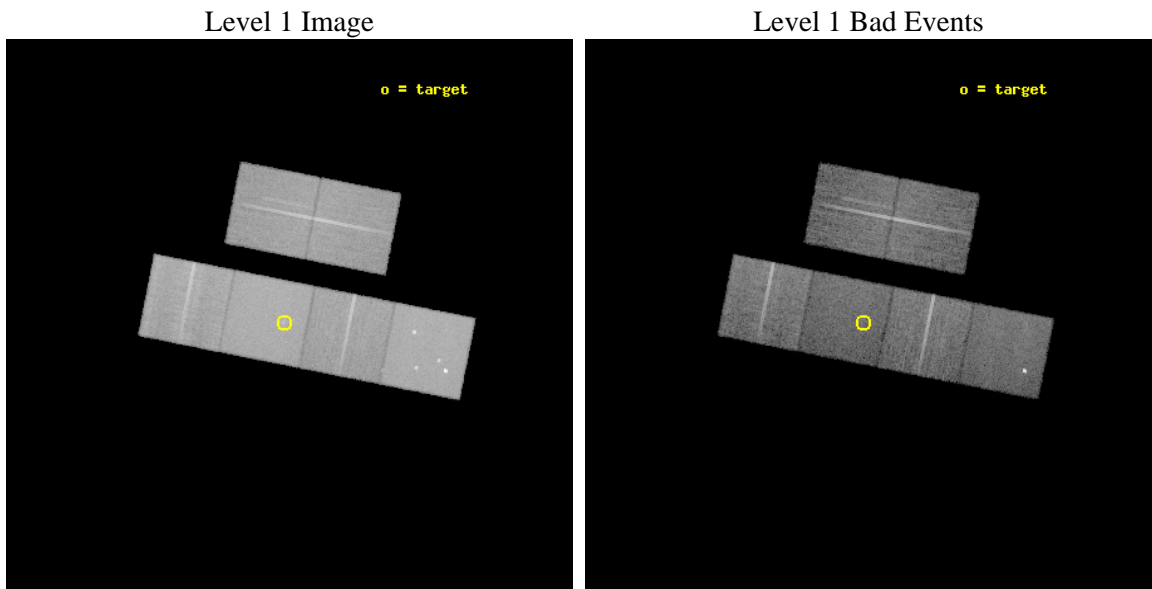
seq_num	600196	Sequence number
obs_id	2062	Observation id
title	THE X-RAY POINT SOURCE POPULATION IN SPIRAL GALAXIES	Proposal titl
observer	Dr Andrea Prestwich	Principal investigator
object	NGC 4314	Source name
dtycycle	0	
cycle	P	events from which exps? Prim/Second/Both
ra_targ	185.633333	Observer's specified target RA [deg]
dec_targ	29.895278	Observer's specified target Dec [deg]
ra_nom	185.62207499719	Nominal RA [deg]
dec_nom	29.895143273636	Nominal Dec [deg]
roll_nom	191.20227536154	Nominal Roll [deg]
revision	3	Processing version of data
ontime	16279.353432342	Sum of GTIs [s]
livetime	16073.214456932	Livetime [s]
ontime2	15647.399994925	Sum of GTIs [s]
ontime3	15669.923104852	Sum of GTIs [s]
ontime5	16353.854648143	Sum of GTIs [s]
ontime6	15676.446175009	Sum of GTIs [s]
ontime7	16279.353432342	Sum of GTIs [s]
ontime8	15689.327946082	Sum of GTIs [s]
l2events	492916	Number of level 2 events



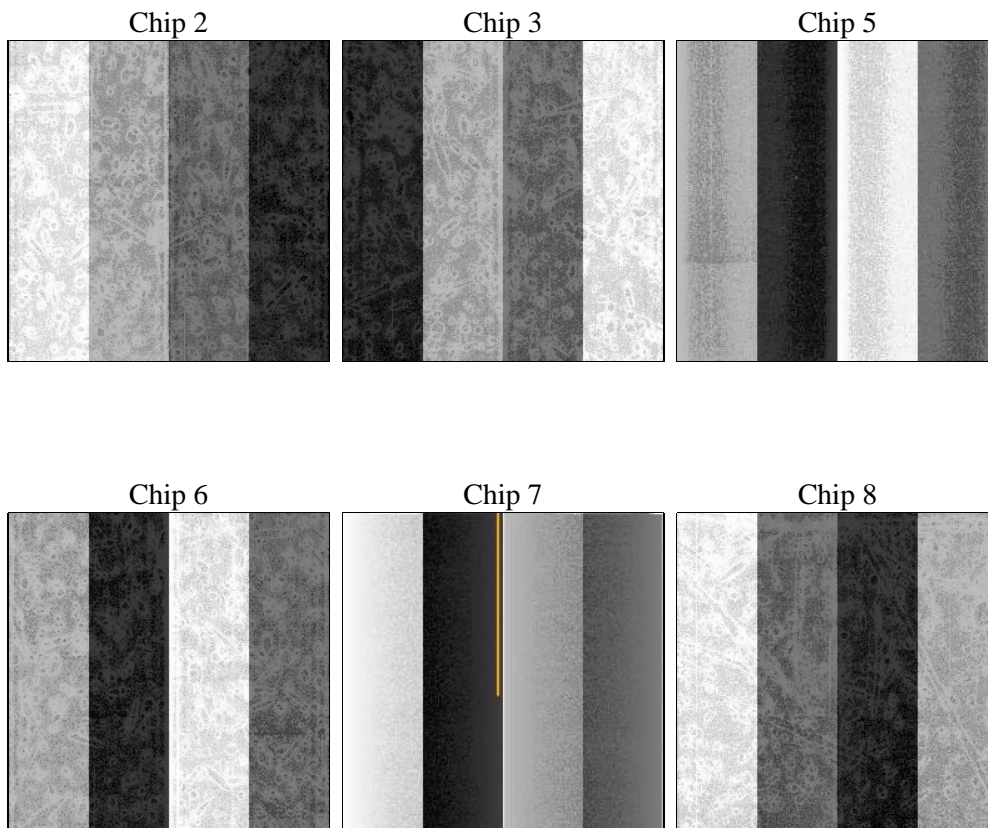
2 OBI

2.1 OBI

2.1.1 Images



2.1.2 Bias



2.1.3 Parameters

obi_num	0	Obi number	sched_exp_time	16500.000000	[s] Scheduled observation exposure time
ascdsver	8.4.5	Processing system revision	ontime	16279.353432342	Sum of GTIs [s]
caldsver	4.5.1.1	 	ontime2	15647.399994925	Sum of GTIs [s]
date	2012-09-14T20:07:38	Date and time of file creation	ontime3	15669.923104852	Sum of GTIs [s]
revision	3	Processing version of data	ontime5	16353.854648143	Sum of GTIs [s]
			ontime6	15676.446175009	Sum of GTIs [s]
			ontime7	16279.353432342	Sum of GTIs [s]
			ontime8	15689.327946082	Sum of GTIs [s]
			l1events	1128506	Number of level 1 events

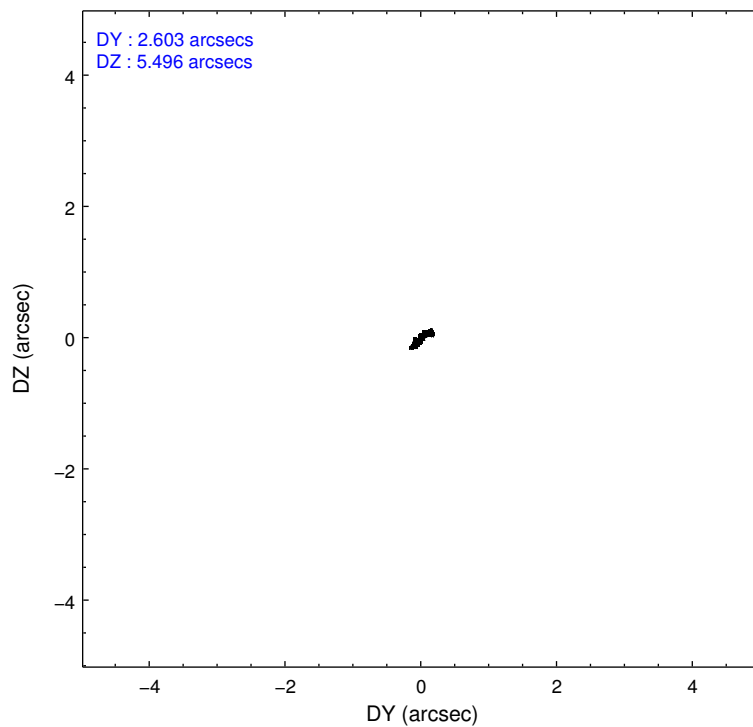
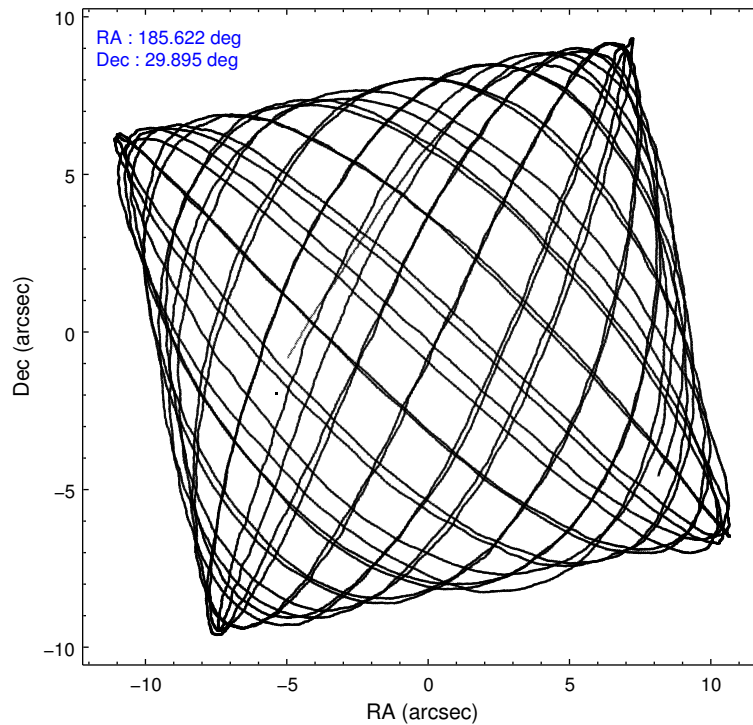
2.1.4 Events

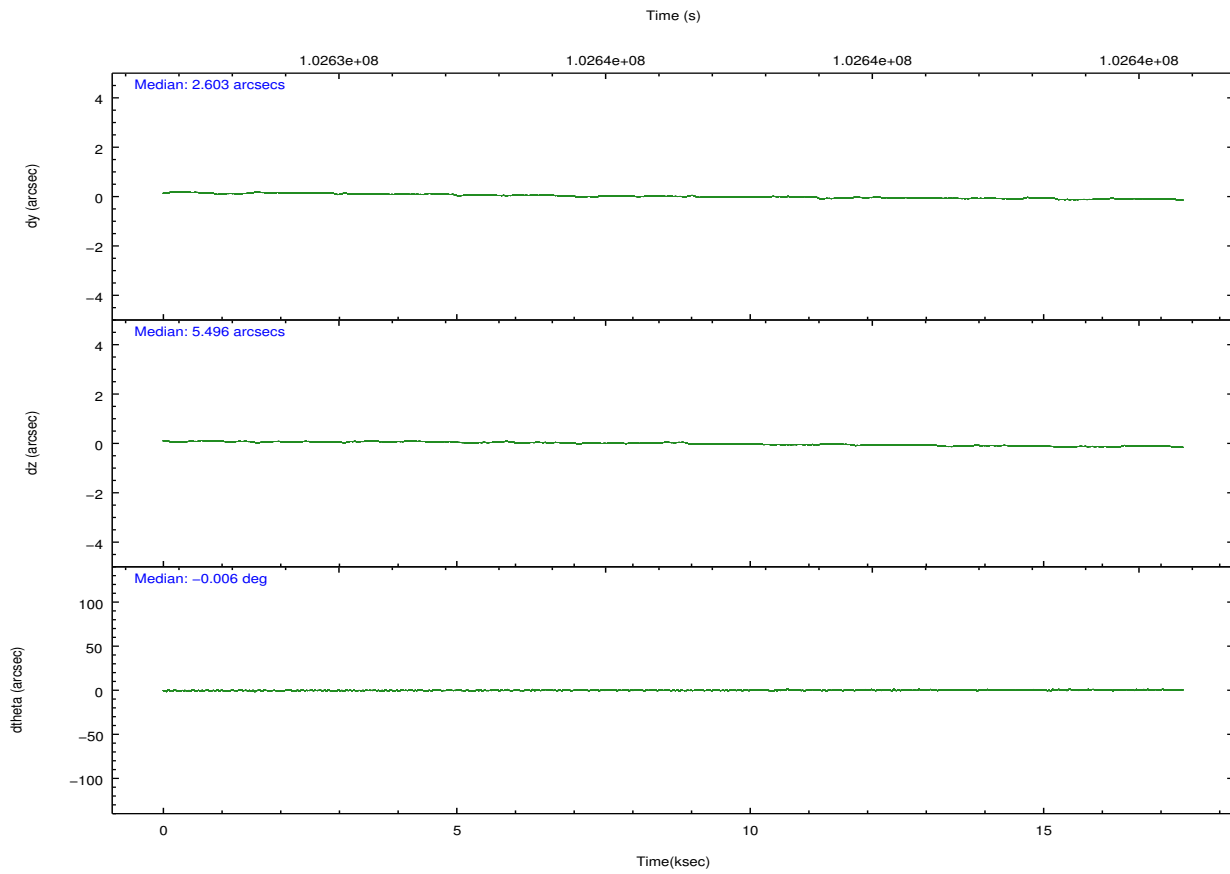
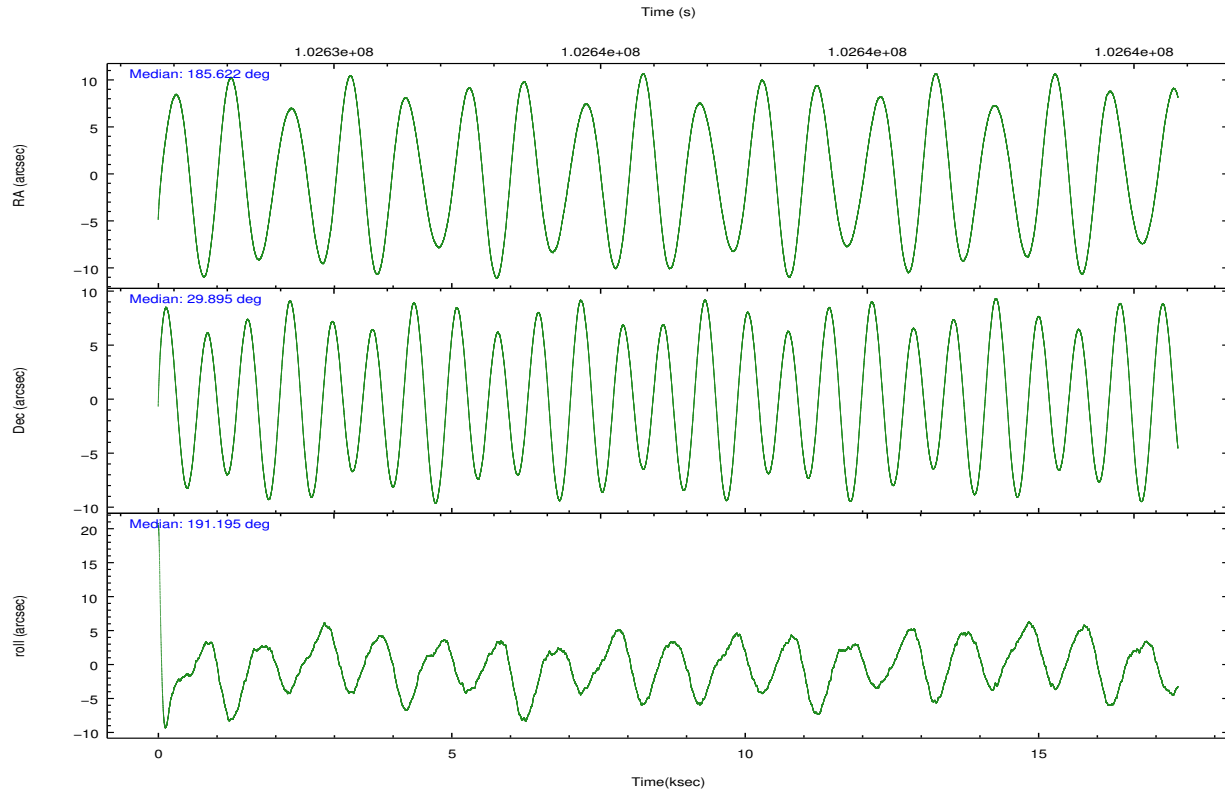
	ccd 2	ccd 3	ccd 5	ccd 6	ccd 7	ccd 8		ccd 2	ccd 3	ccd 5	ccd 6	ccd 7	ccd 8
level 1 events	157740	156278	227917	167788	217344	201439	grade 0 events	21215	22105	20561	22374	27605	28951
rejected events	101849	98382	87061	105276	77547	115216		13%	14%	9%	13%	12%	14%
rejected %	64%	62%	38%	62%	35%	57%	grade 1 events	190	165	219	186	172	235
								0%	0%	0%	0%	0%	0%
							grade 2 events	10081	10265	50548	10231	26522	15608
								6%	6%	22%	6%	12%	7%
							grade 3 events	3818	4201	5779	3997	11919	7460
								2%	2%	2%	2%	5%	3%
							grade 4 events	3906	4028	5790	4105	11818	7135
								2%	2%	2%	2%	5%	3%
							grade 5 events	3713	3946	12419	4302	13030	5642
								2%	2%	5%	2%	5%	2%
							grade 6 events	16875	17304	58195	21810	61944	27076
								10%	11%	25%	12%	28%	13%
							grade 7 events	97942	94264	74406	100783	64334	109332
								62%	60%	32%	60%	29%	54%

2.2 Compared Parameters

Parameter	Planned	Actual	Parameter	Planned	Actual
Instrument	ACIS	ACIS	Obspar format version number	7	7
Detector	ACIS-235678	ACIS-235678	Obspar file type	PREDICTED	ACTUAL
Grating	NONE	NONE	Obspar update status	NONE	UPDATED
Data mode	FAINT	FAINT	Number of optional ACIS chips dropped	0	0
Observation mode	POINTING	POINTING	On-chip summing requested	N	N
[deg] Pointing RA	185.645537	185.6220749971851	Subarray requested	NONE	NONE
[deg] Pointing Dec	29.913309	29.89514327363605	Alternating exposures requested	N	N
[deg] Pointing Roll	191.033932	191.2022753615438	[s] Primary exposure time	0.000000	3.2
[mm] SIM focus pos	-0.684267	-0.6828225247311905			
[mm] SIM defocus	0	0.001444936568705701			
[mm] SIM translation stage pos	-190.132523	-190.1400660498719			
[mm] SIM translation stage offset	0	0.00754346686406393			
[s] Observation start time (MET)	102628449.184000	102627146.63208			
Observation start date	2001-04-02T19:53:05	2001-04-02T19:32:26			
[s] Observation end time (MET)	102644949.184000	102645323.47028			
Observation end date	2001-04-03T00:28:05	2001-04-03T00:35:23			
Read mode	TIMED	TIMED			

2.3 Aspect



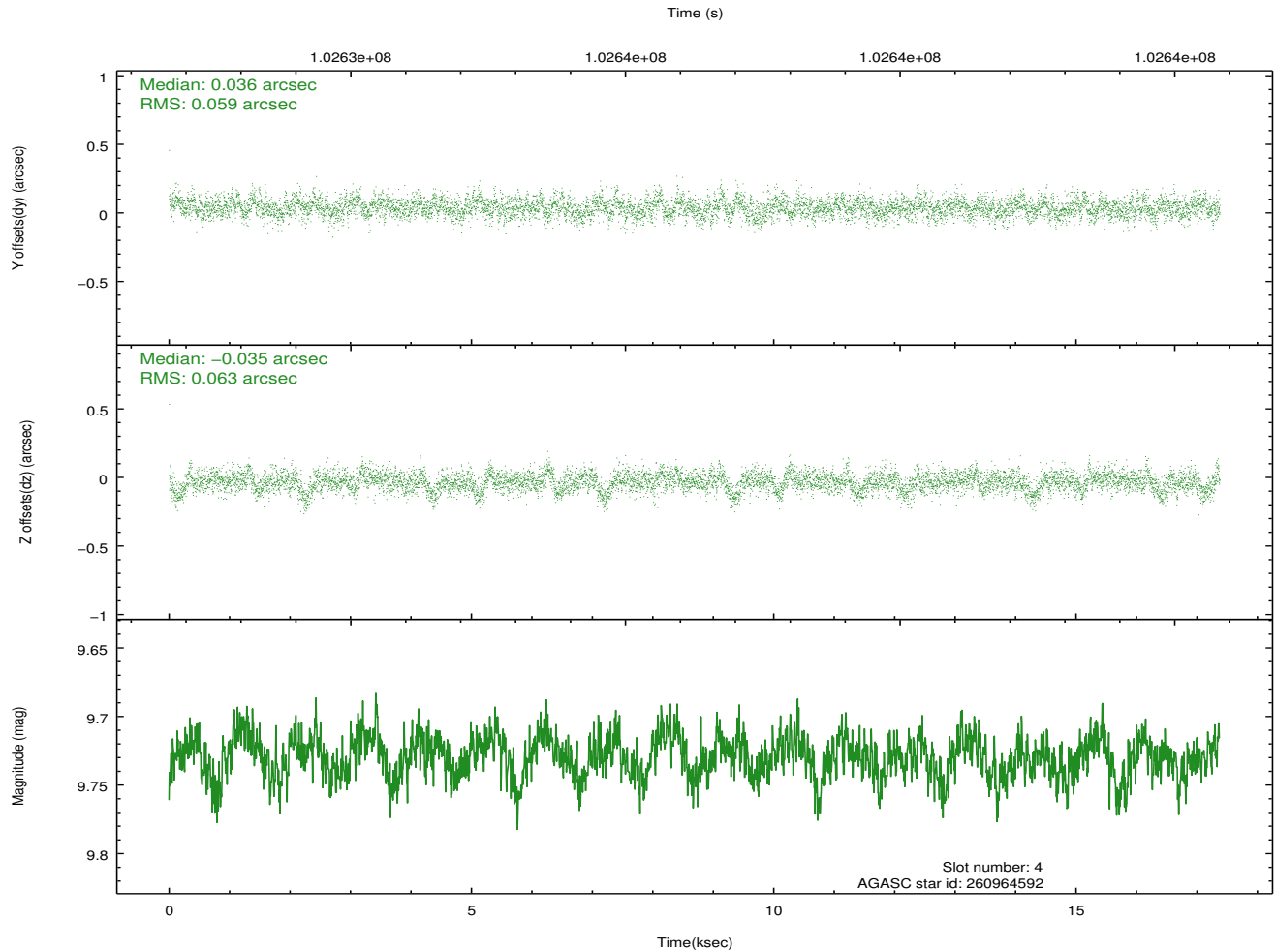
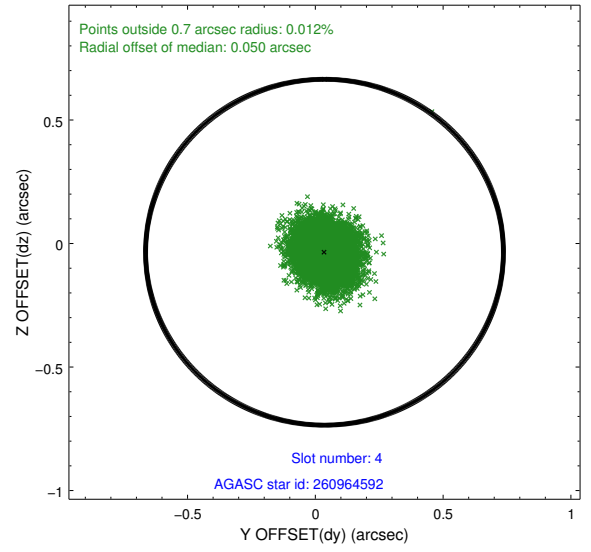
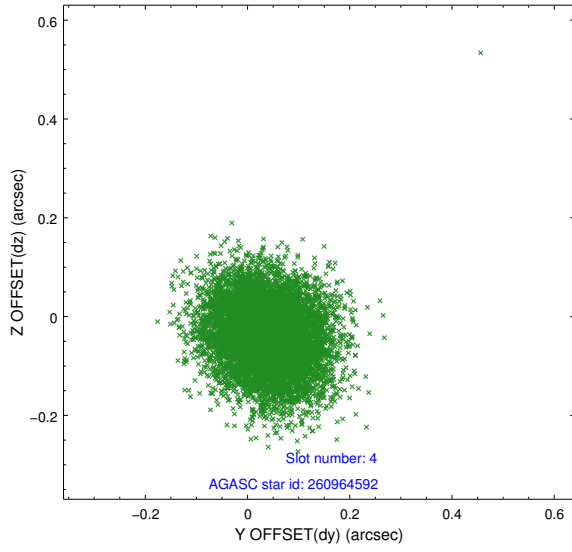


Slot Statistics

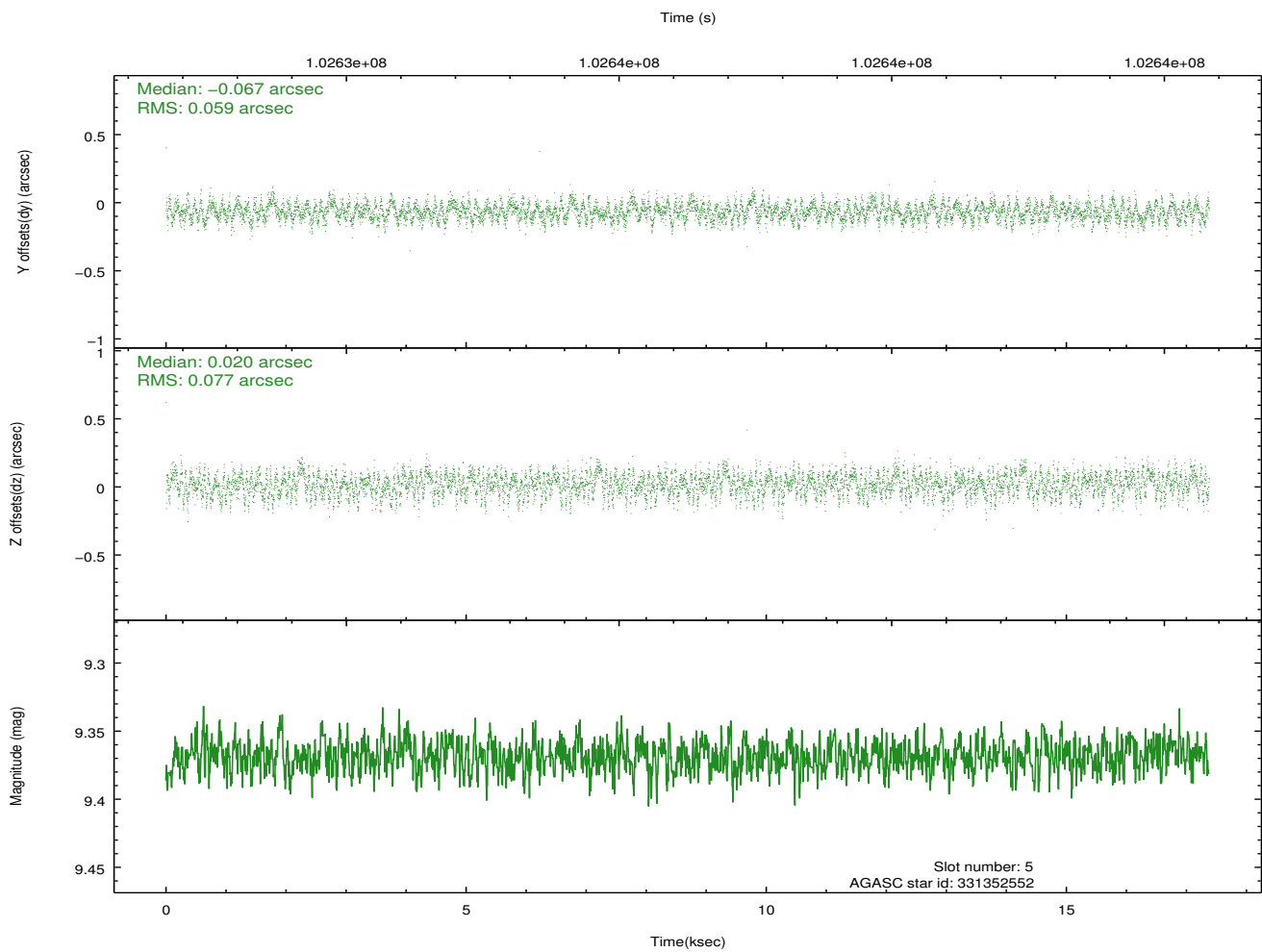
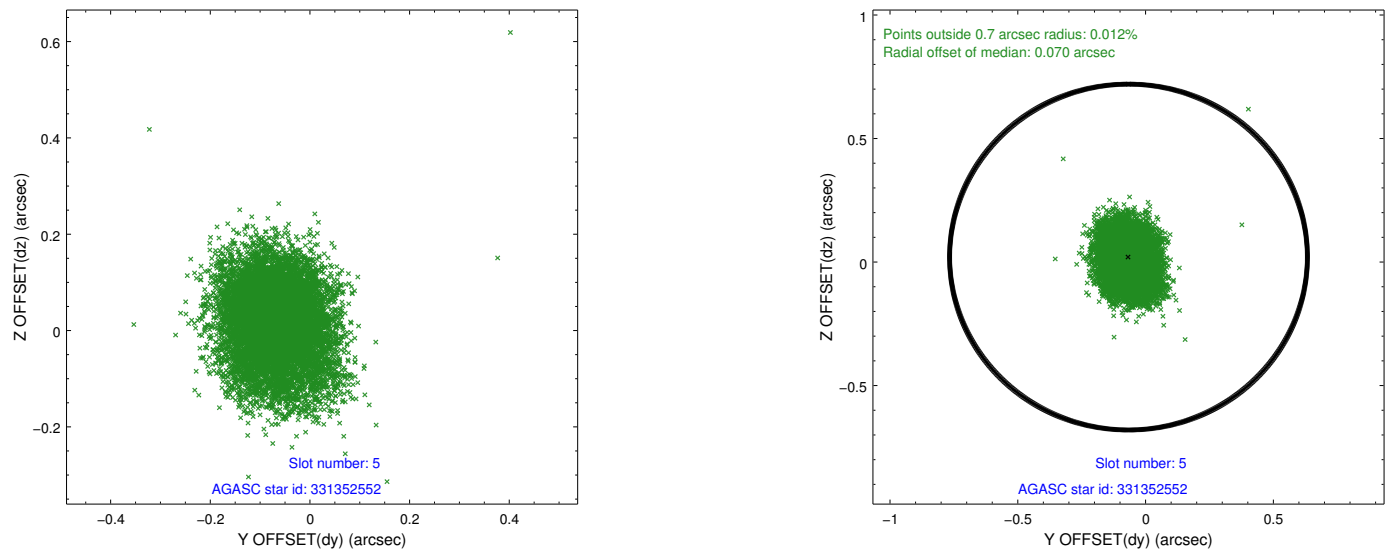
slot	status	id	mag	n_pts	med_dy	med_dz	dr1	dr2	ra	dec	mean_y	mean_z
0	FID	ACIS-S-2	7.11	4239	-0.038	-0.006	0.007	0.011	0.000000	0.000000	-755.24	-1726.63
1	FID	ACIS-S-4	7.20	4239	-0.019	0.020	0.006	0.010	0.000000	0.000000	2157.90	181.71
2	FID	ACIS-S-5	7.24	4239	0.026	-0.005	0.007	0.013	0.000000	0.000000	-1807.76	175.52
3	UNUSED		0.00	0	0.000	0.000	0.000	0.000	0.000000	0.000000	0.00	0.00
4	GUIDE	260964592	9.73	8473	0.036	-0.035	0.092	0.149	186.307418	29.951441	-2054.75	254.42
5	GUIDE	331352552	9.37	8469	-0.067	0.020	0.103	0.166	185.768300	30.610633	-854.75	-2391.33
6	UNUSED		0.00	0	0.000	0.000	0.000	0.000	0.000000	0.000000	0.00	0.00
7	GUIDE	331355312	7.78	8474	0.026	0.021	0.078	0.119	184.992302	30.486549	1592.36	-2418.99

2.4 Star Slots

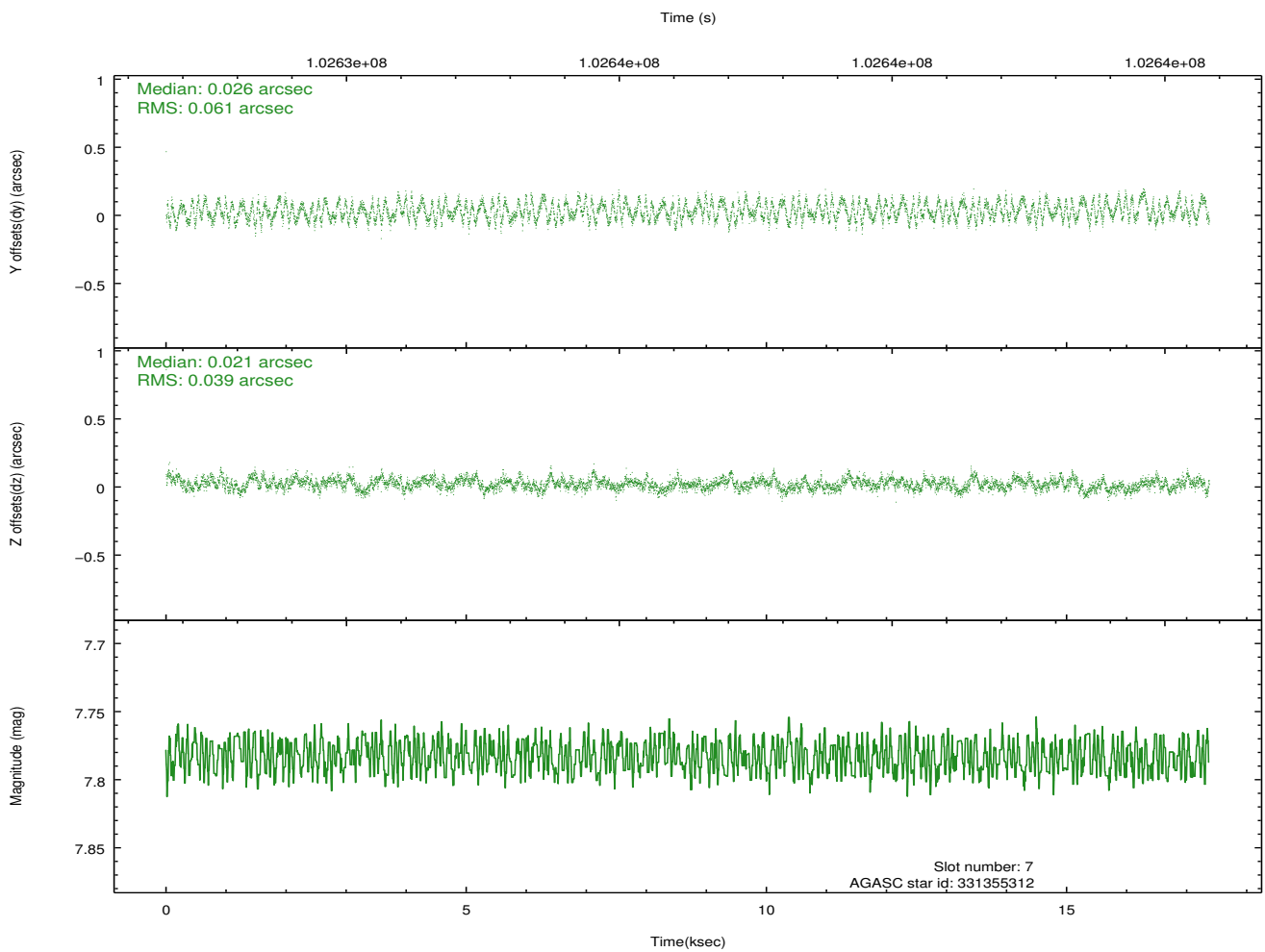
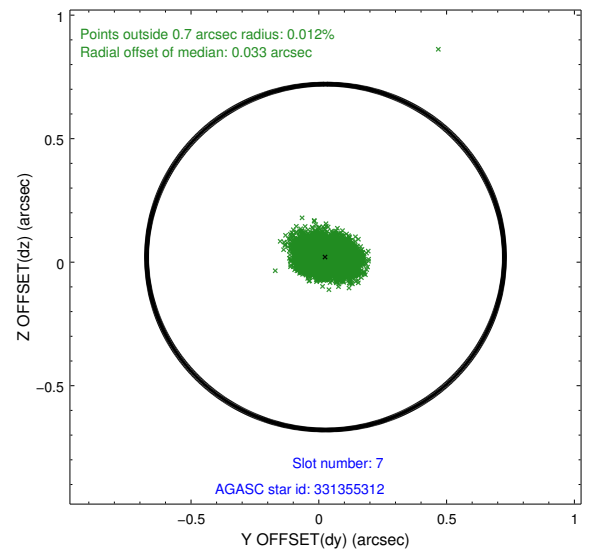
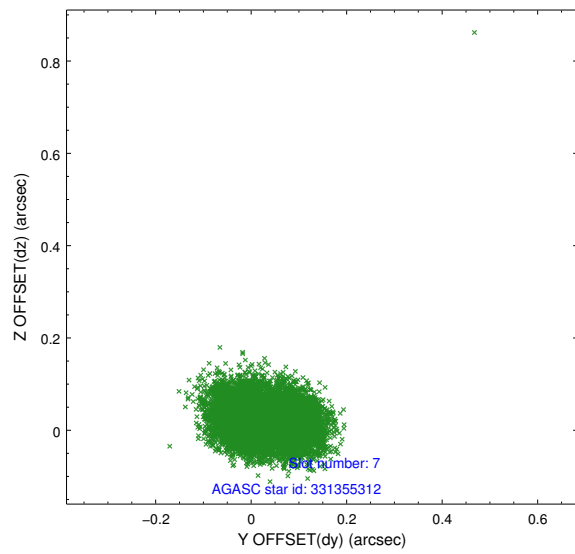
2.4.1 Slot 4



2.4.2 Slot 5

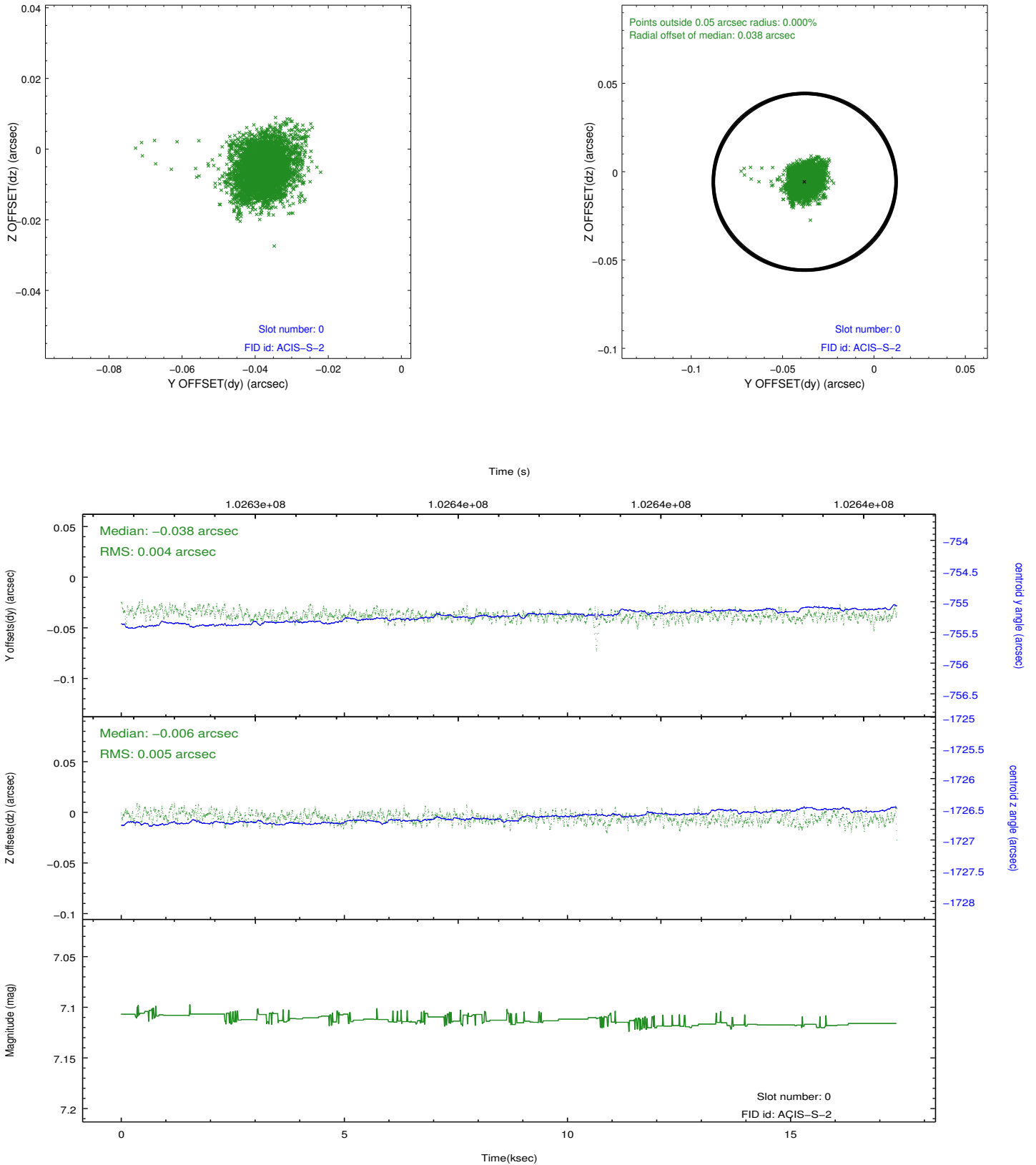


2.4.3 Slot 7

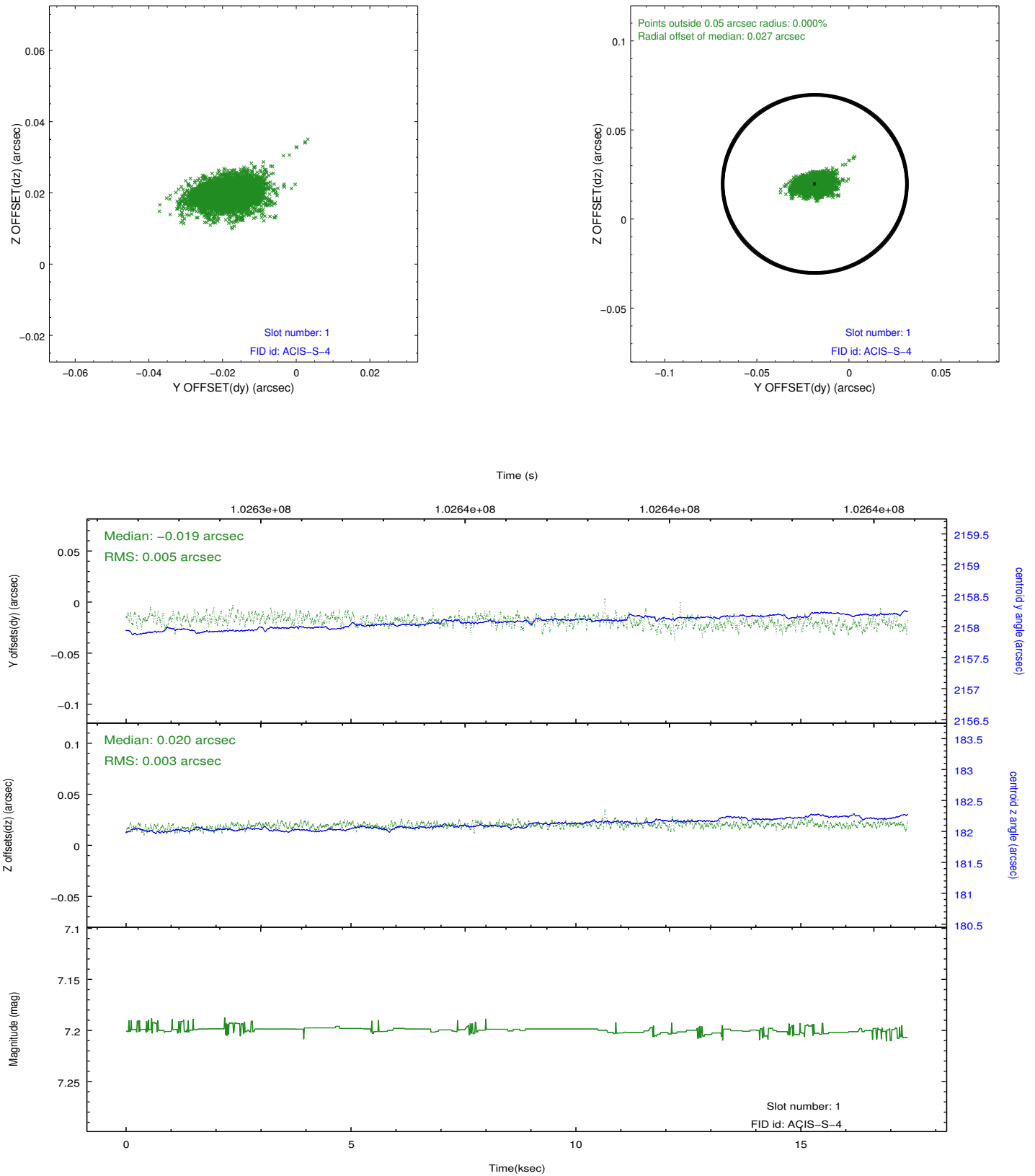


2.5 FID Slots

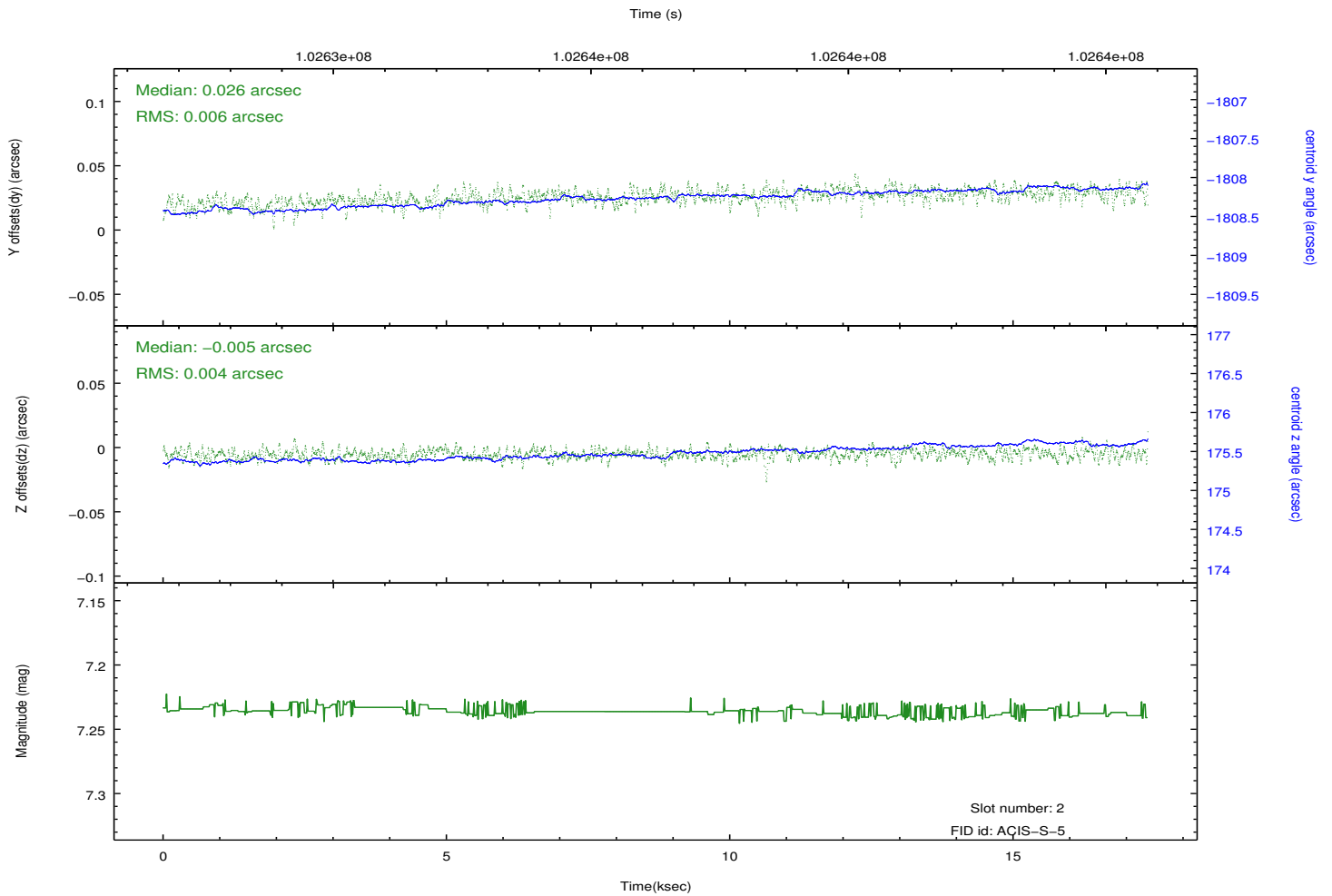
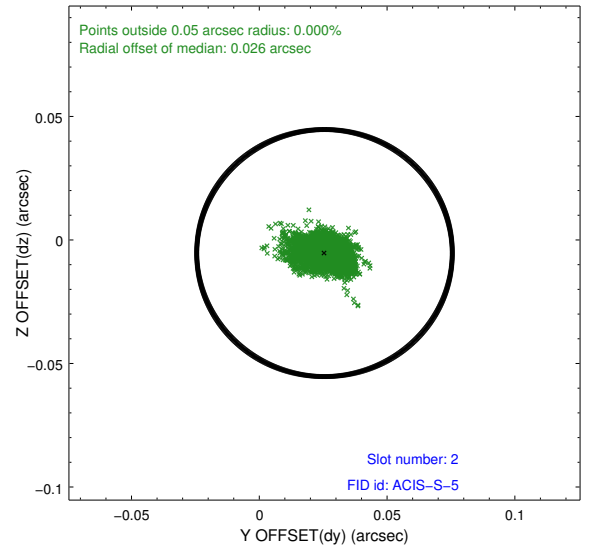
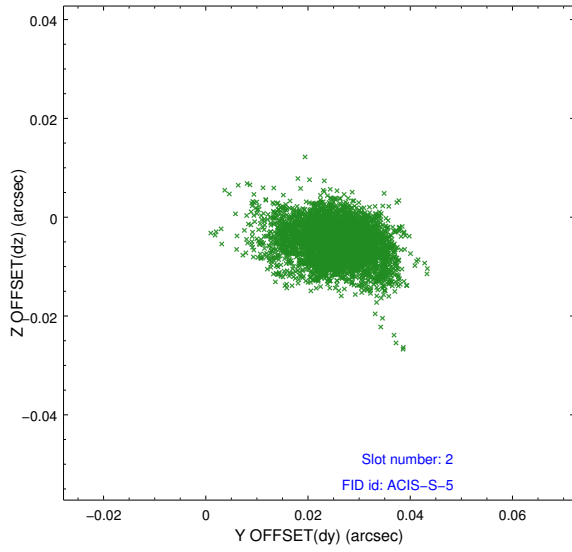
2.5.1 Slot 0



2.5.2 Slot 1



2.5.3 Slot 2



A Summary

A.1 Status

V&V Scientist	Beth Sundheim
V&V Date (YYYY-MM-DD)	2012.09.19
V&V Edition	1
V&V Disposition and Status	OK
V&V Charge Time	16.281

A.2 Comments

Slots 3 and 6 were not utilized in this observation.