

V&V Reference Report

L2 ASCDS Version : 8.4.5

Observation 2462 - L2 Version 4
Chandra X-Ray Center

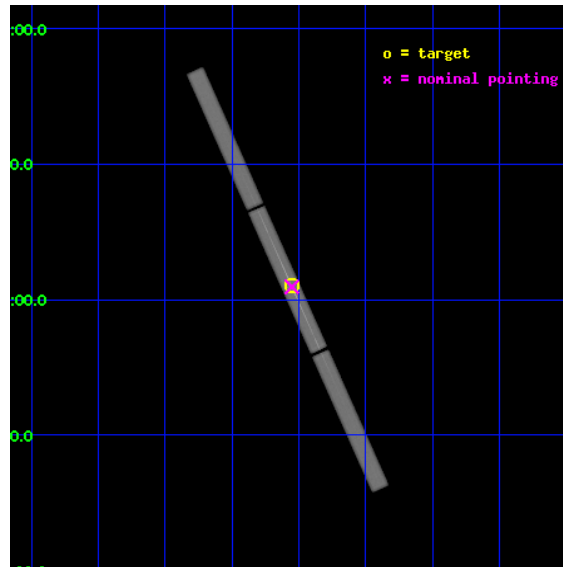
L2 Processing Date : Sep 18 2012

Contents

1	Front	2
2	OBI	3
2.1	OBI	3
2.1.1	Images	3
2.1.2	Parameters	4
2.1.3	Events	4
2.2	Compared Parameters	5
2.3	Aspect	6
2.4	Star Slots	9
2.4.1	Slot 3	9
2.4.2	Slot 4	10
2.4.3	Slot 5	11
2.4.4	Slot 6	12
2.4.5	Slot 7	13
2.5	FID Slots	14
2.5.1	Slot 0	14
2.5.2	Slot 1	15
2.5.3	Slot 2	16
3	Gratings	17
3.1	LETG Arm	17
A	Summary	19
A.1	Status	19
A.2	Comments	19

1 Front

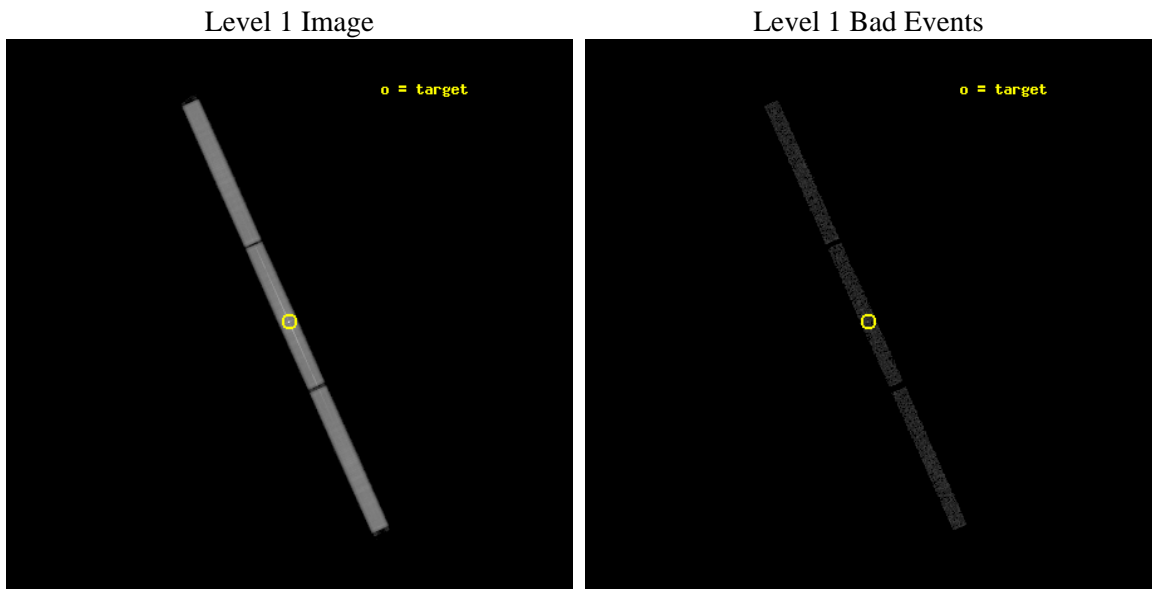
seq_num	790056	Sequence number
obs_id	2462	Observation id
title	AO3 CALIBRATION OBSERVATIONS OF 3C273	Proposal title
observer	Dr. CXC Calibration	Principal investigator
object	3C273	Source name
ra_targ	187.277917	Observer's specified target RA [deg]
dec_targ	2.052389	Observer's specified target Dec [deg]
ra_nom	187.27579265435	Nominal RA [deg]
dec_nom	2.048148071338	Nominal Dec [deg]
roll_nom	245.69526114169	Nominal Roll [deg]
revision	4	Processing version of data
ontime	29854.407413825	[s]
livetime	29679.843165118	Ontime multiplied by DTCOR
l2events	1386371	Number of level 2 events



2 OBI

2.1 OBI

2.1.1 Images



2.1.2 Parameters

obi_num	0	Obi number	sched_exp_time	30000.000000	[s] Scheduled observation exposure time
ascdsver	8.4.5	Processing system revision	ontime	29854.407413825	[s]
caldbver	4.5.1.1	 	l1events	1957517	Number of level 1 events
date	2012-09-17T22:23:25	Date and time of file creation			
revision	4	Processing version of data			

2.1.3 Events

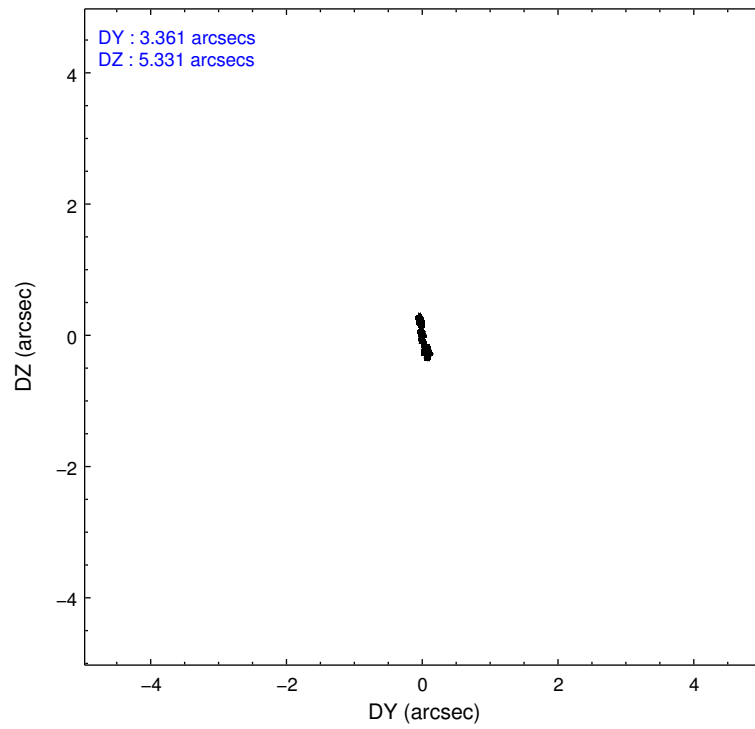
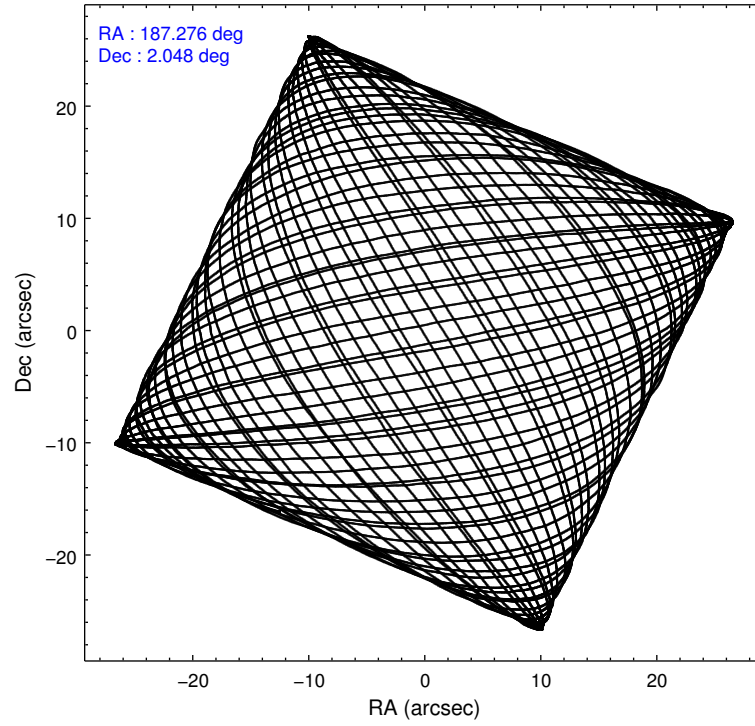
Level 1 Events

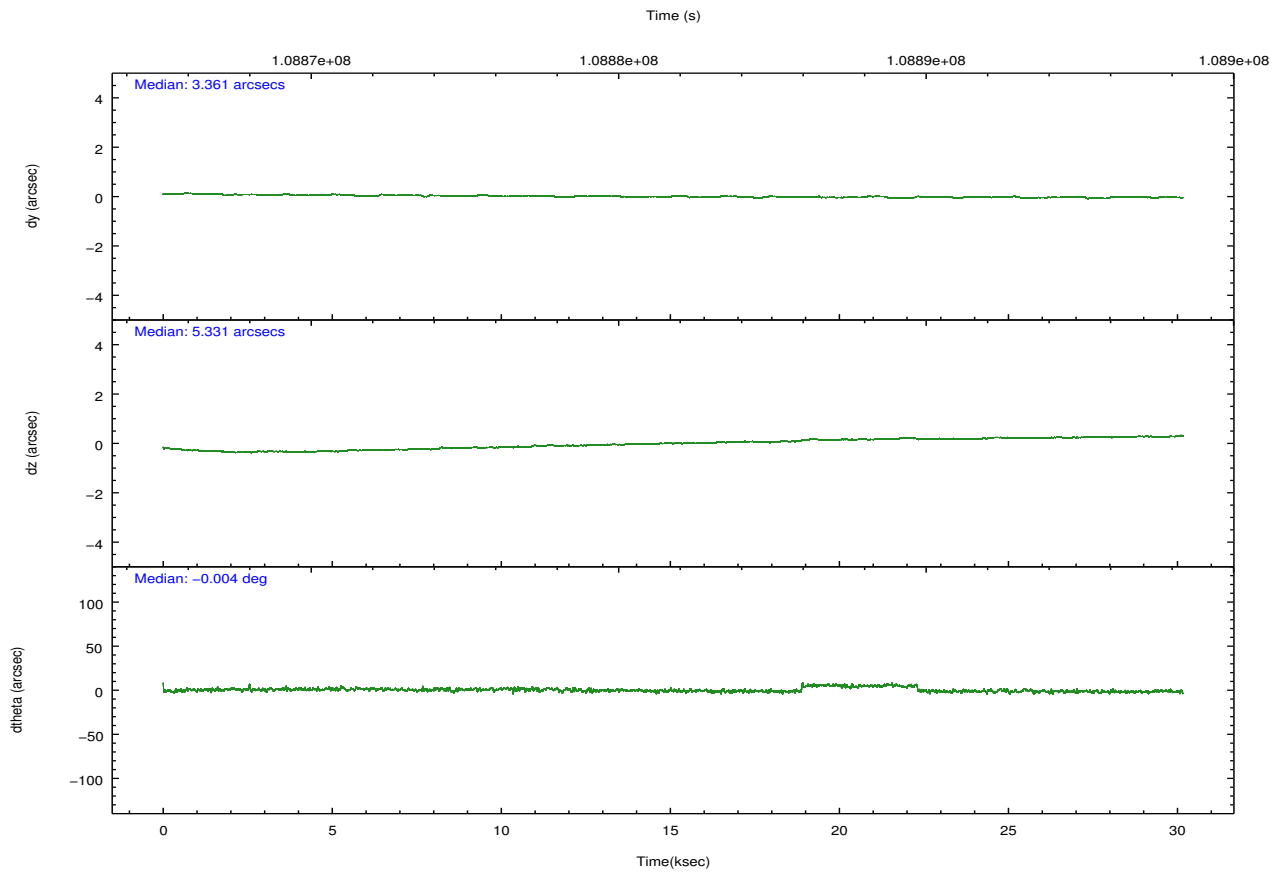
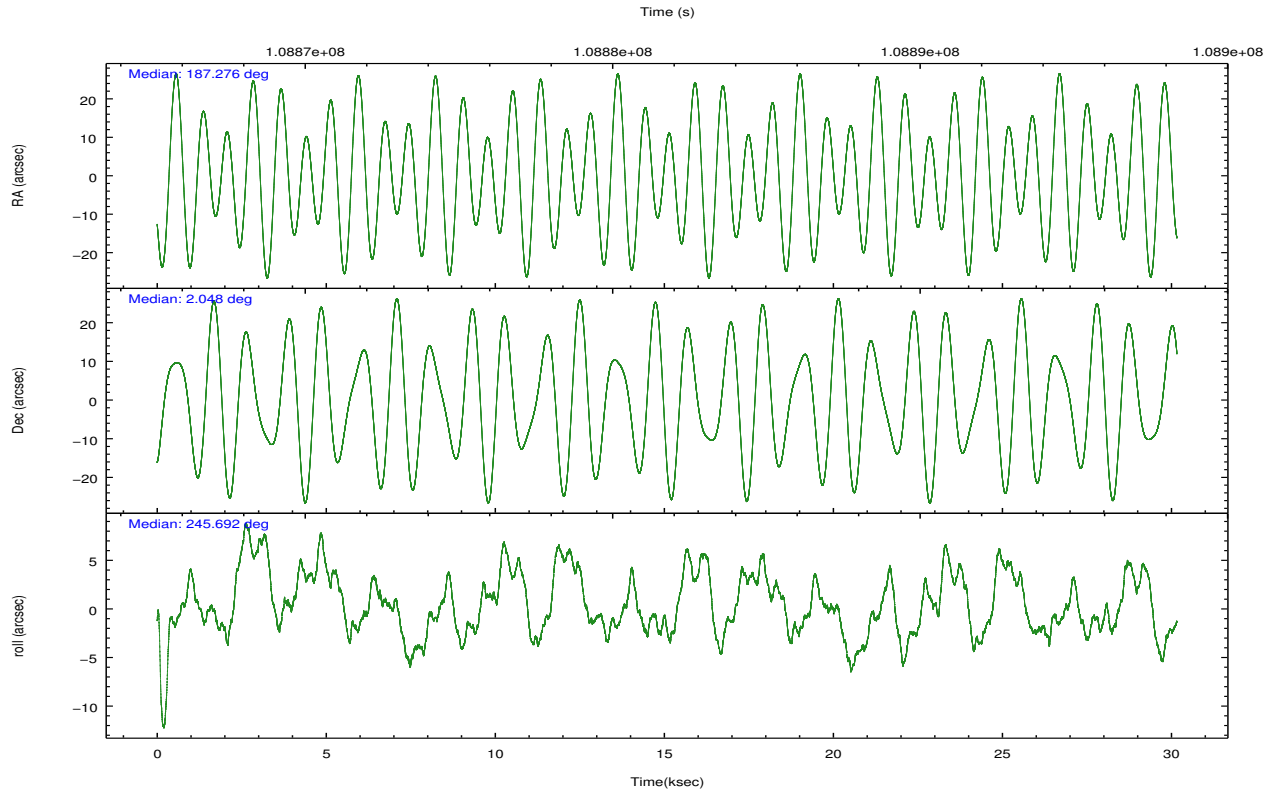
	segment 1	segment 2	segment 3
level 1 events	617971	715244	624302
rejected events	7739	9980	8002
rejected %	1%	1%	1%

2.2 Compared Parameters

Parameter	Planned	Actual	Parameter	Planned	Actual
Instrument	HRC	HRC	Obspar format version number	7	7
Detector	HRC-S	HRC-S	Obspar file type	PREDICTED	ACTUAL
Grating	LETG	LETG	Obspar update status	NONE	UPDATED
Data mode	OBSERVING	OBSERVING			
Observation mode	POINTING	POINTING			
[deg] Pointing RA	187.271616	187.2757926543537			
[deg] Pointing Dec	2.076461	2.048148071338037			
[deg] Pointing Roll	245.628075	245.6952611416858			
[s] Window start time (MET)	108792064.184000	108792064.184000			
[s] Window stop time (MET)	108936064.184000	108936064.184000			
[mm] SIM focus pos	-1.429586	-1.428180813131781			
[mm] SIM defocus	0.1037507710433287	0.1051558262725154			
[mm] SIM translation stage pos	250.455976	250.4635187648994			
[mm] SIM translation stage offset	0	-0.007540371344731511			
[s] Observation start time (MET)	108866849.184000	108866414.12447			
Observation start date	2001-06-14T00:46:25	2001-06-14T00:40:14			
[s] Observation end time (MET)	108896849.184000	108897199.48817			
Observation end date	2001-06-14T09:06:25	2001-06-14T09:13:19			

2.3 Aspect



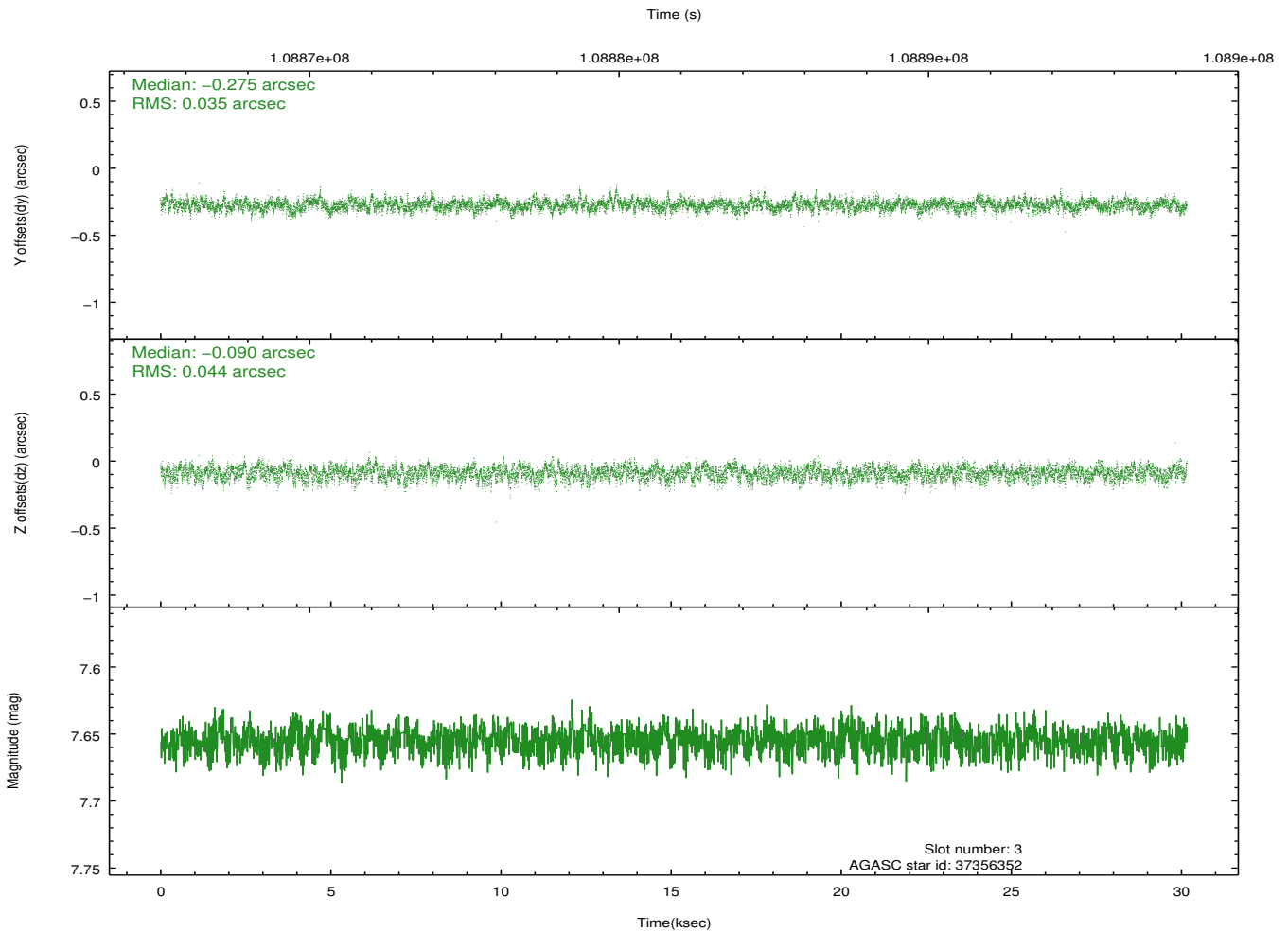
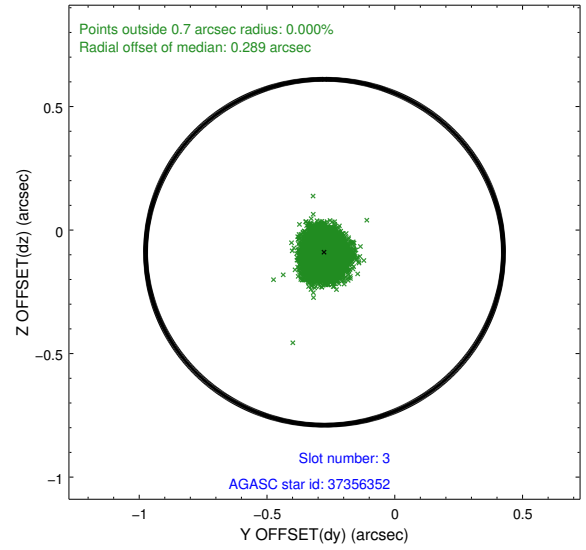
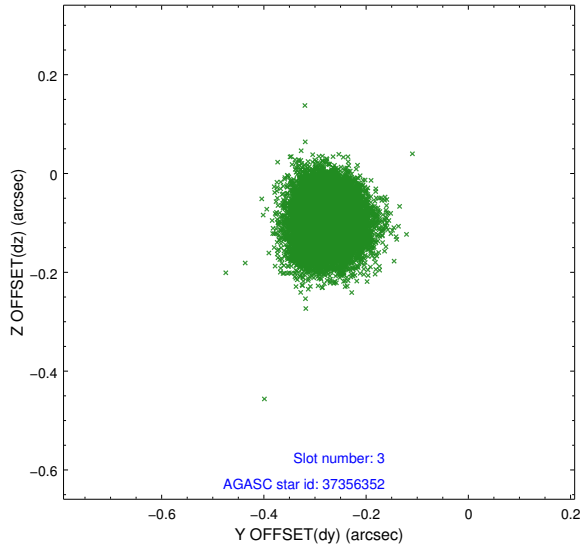


Slot Statistics

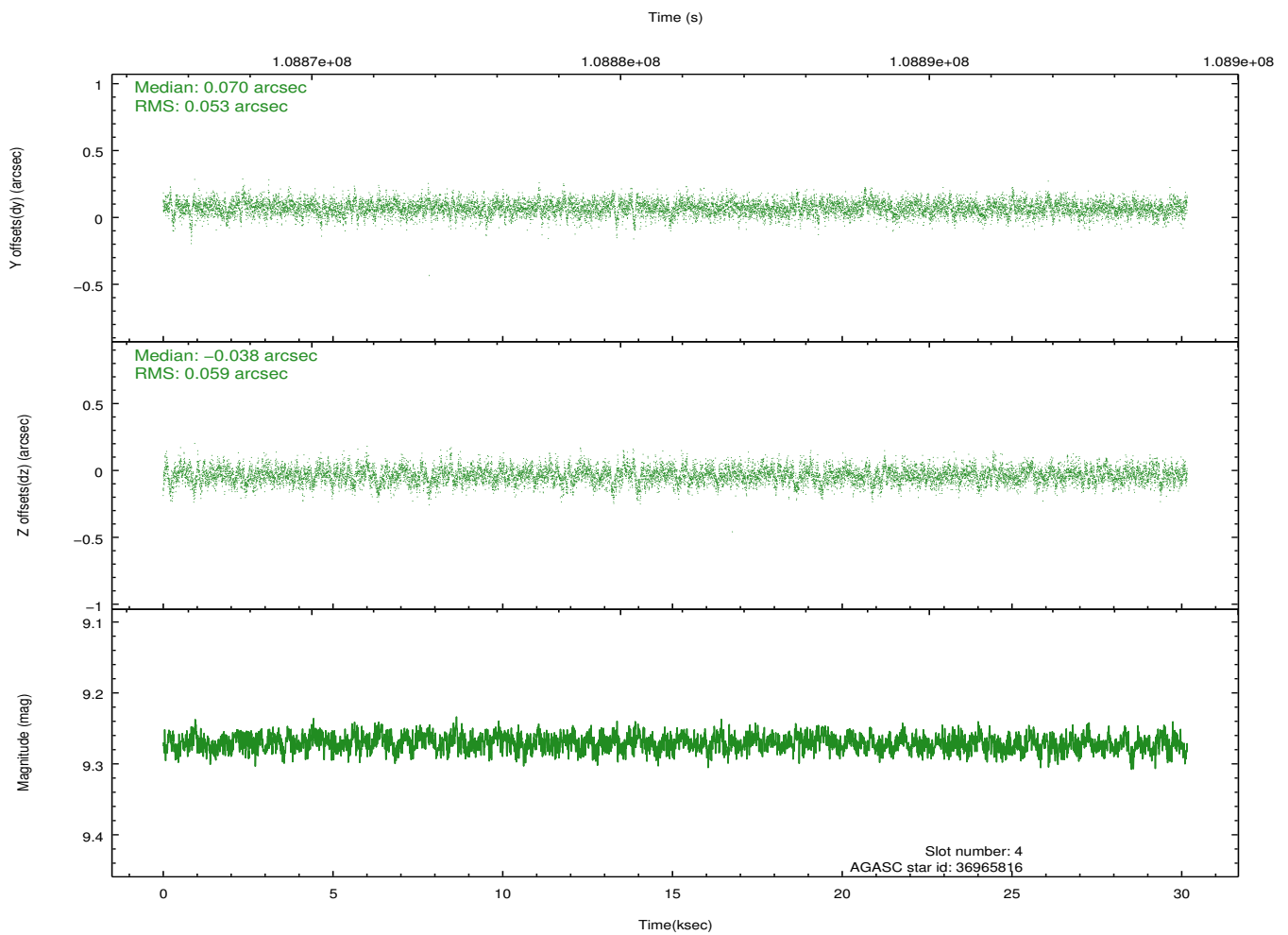
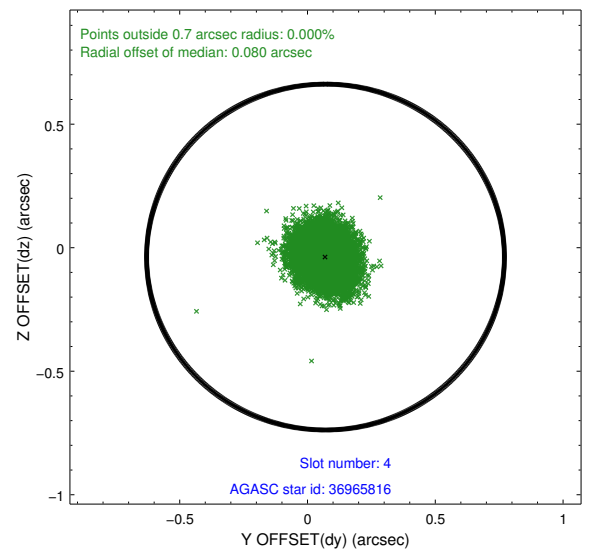
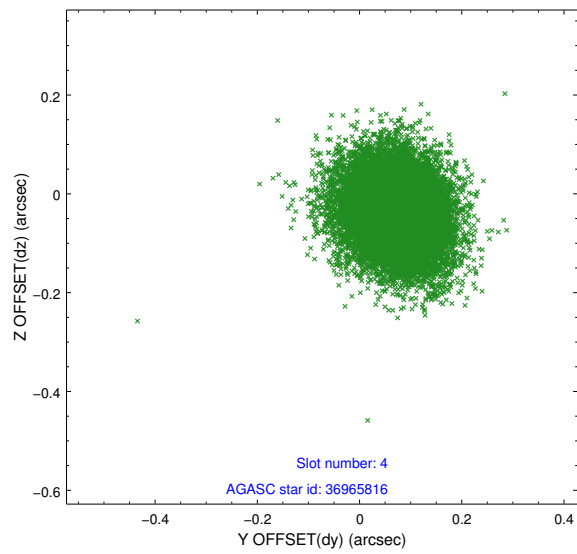
slot	status	id	mag	n_pts	med_dy	med_dz	dr1	dr2	ra	dec	mean_y	mean_z
0	FID	HRC-S-1	6.96	7356	0.133	-0.150	0.008	0.016	0.000000	0.000000	-1157.42	-453.80
1	FID	HRC-S-3	6.99	7357	0.153	-0.045	0.009	0.016	0.000000	0.000000	-1160.29	575.77
2	FID	HRC-S-4	6.91	7355	0.102	-0.101	0.005	0.009	0.000000	0.000000	1240.64	578.44
3	GUIDE	37356352	7.66	14711	-0.275	-0.090	0.060	0.095	187.433784	2.618460	-2017.81	-273.68
4	GUIDE	36965816	9.27	14707	0.070	-0.038	0.084	0.139	186.823353	1.771455	1666.05	-1015.70
5	GUIDE	36965296	9.09	14713	0.088	-0.064	0.072	0.119	186.926292	1.837429	1297.17	-776.35
6	GUIDE	37880408	10.08	14648	-0.209	0.023	0.147	0.240	187.758191	2.290324	-1423.50	1276.85
7	GUIDE	37883040	10.04	14701	0.321	0.170	0.139	0.226	187.575516	1.280402	2159.64	2179.86

2.4 Star Slots

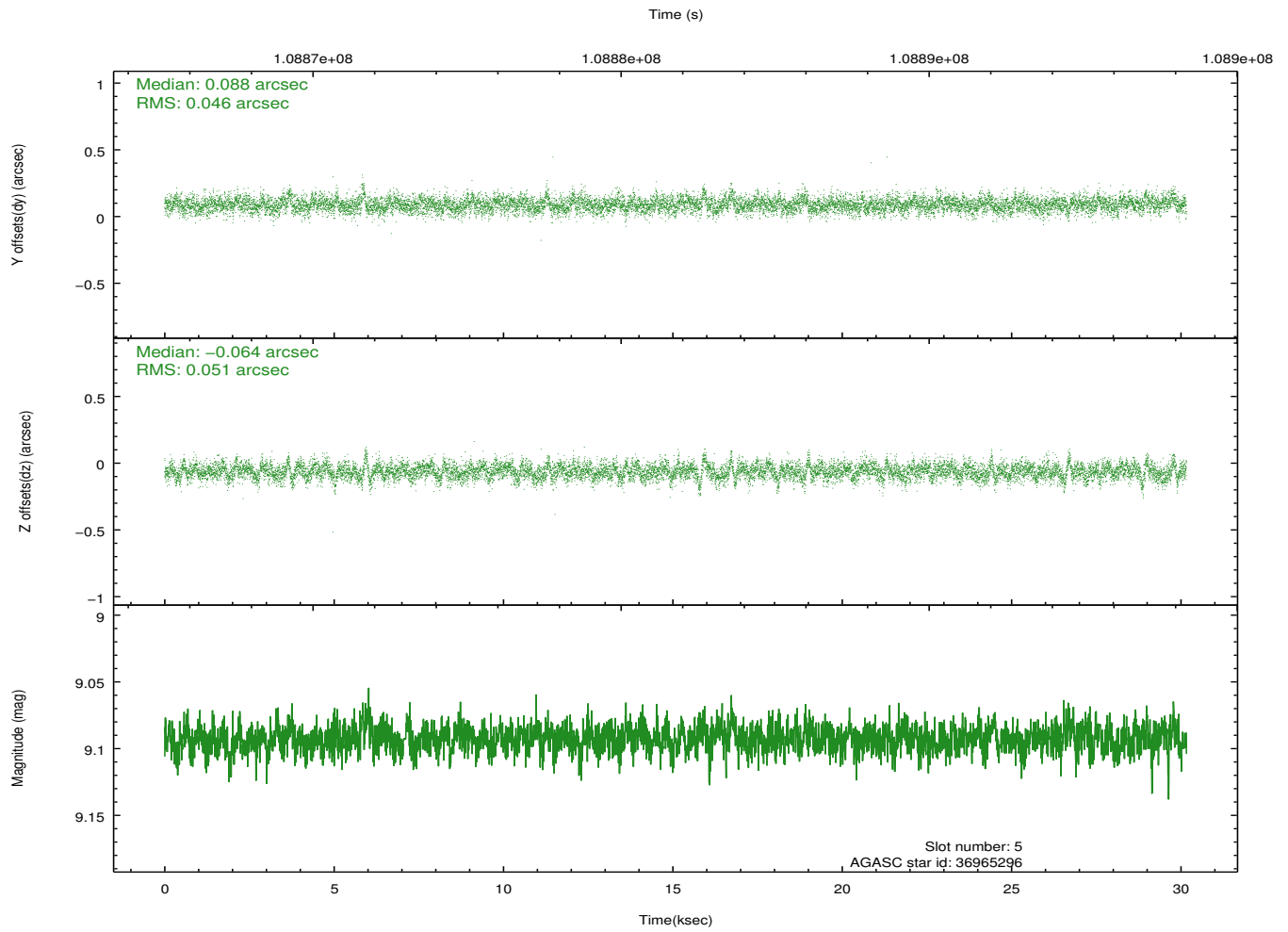
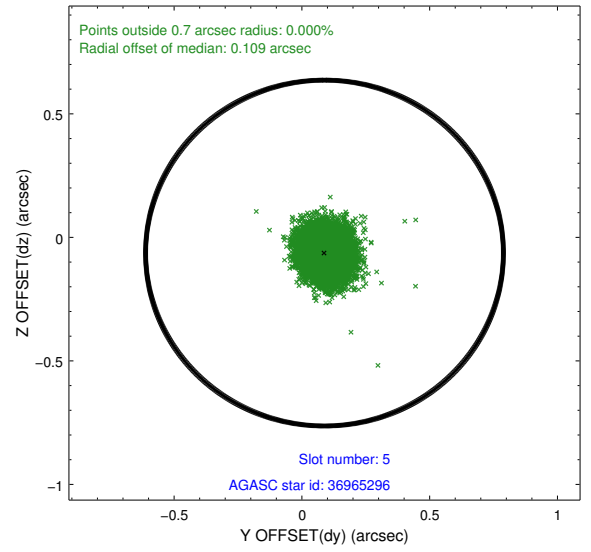
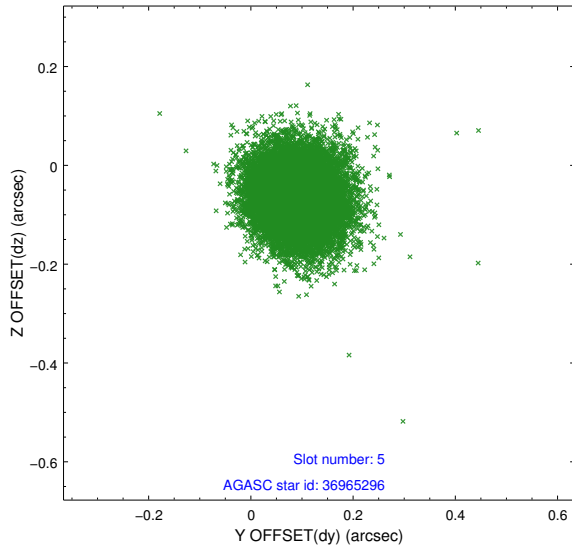
2.4.1 Slot 3



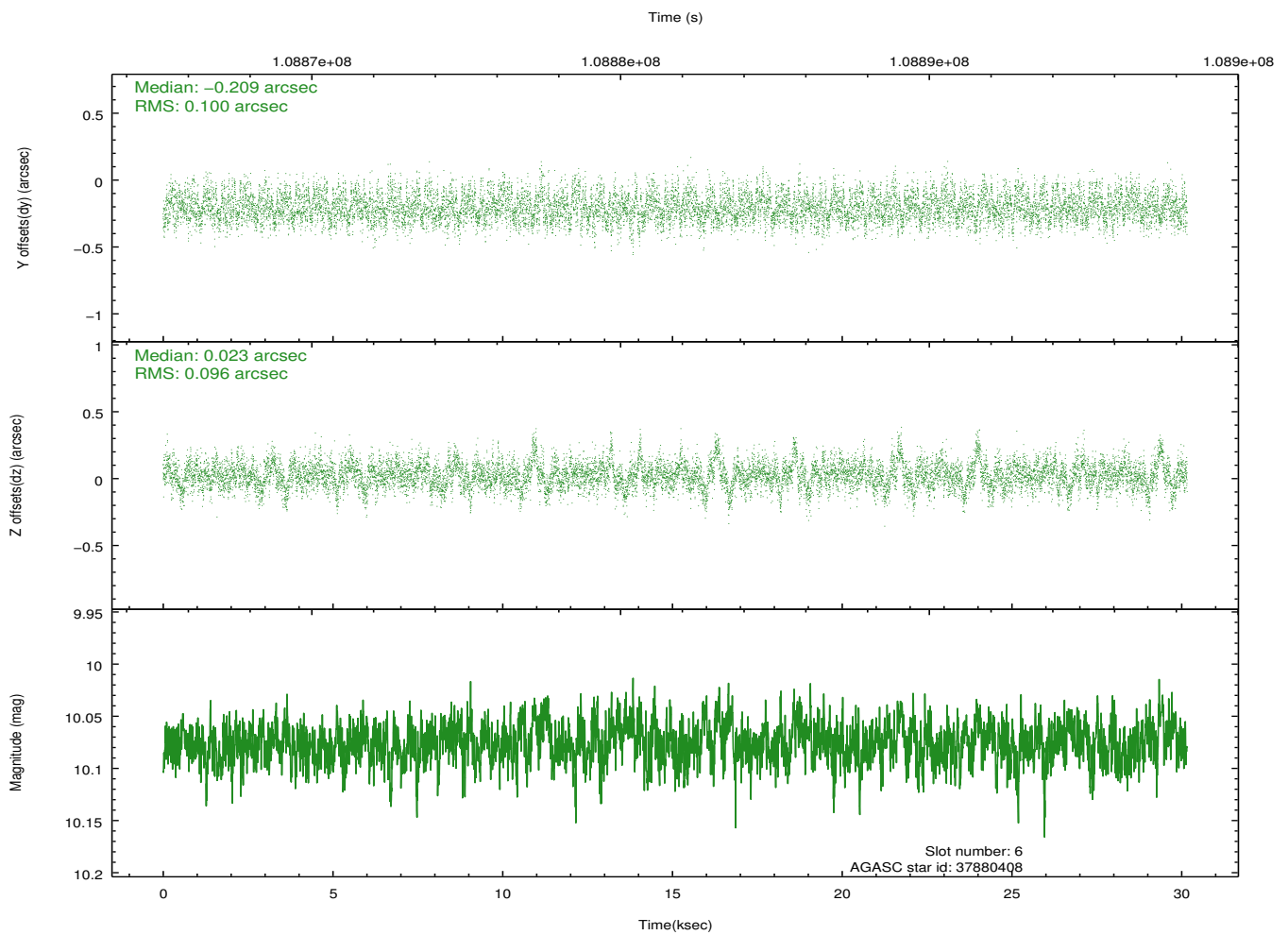
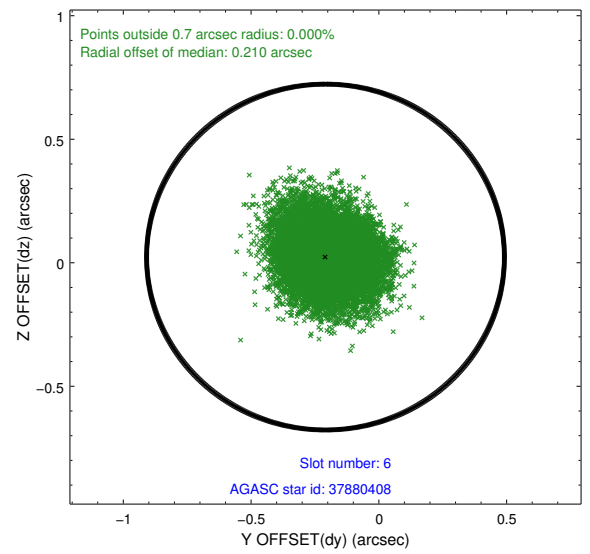
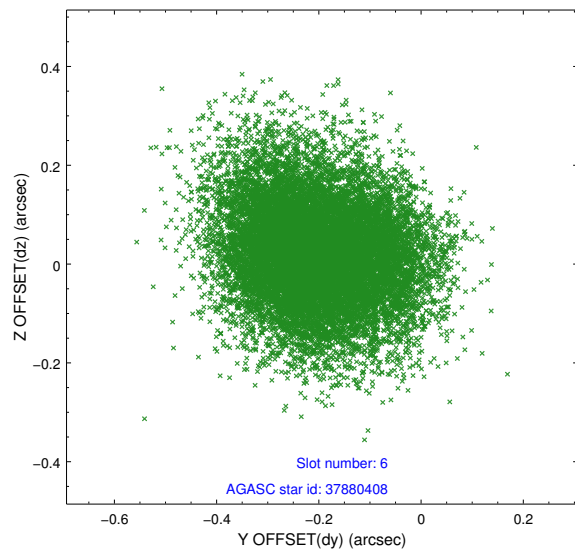
2.4.2 Slot 4



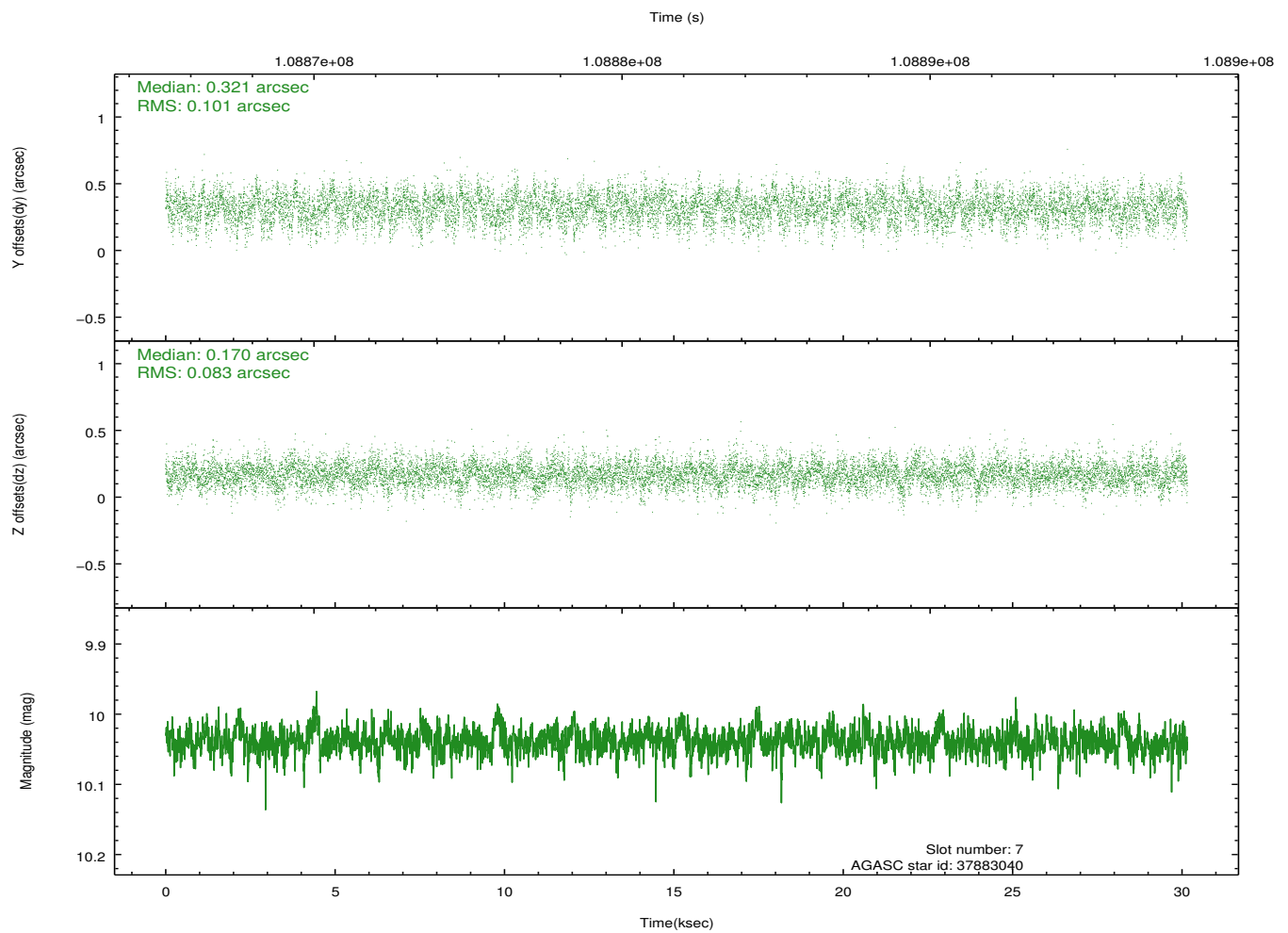
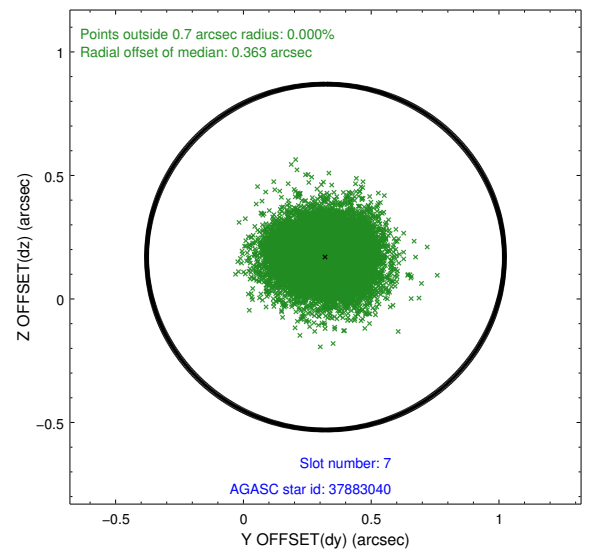
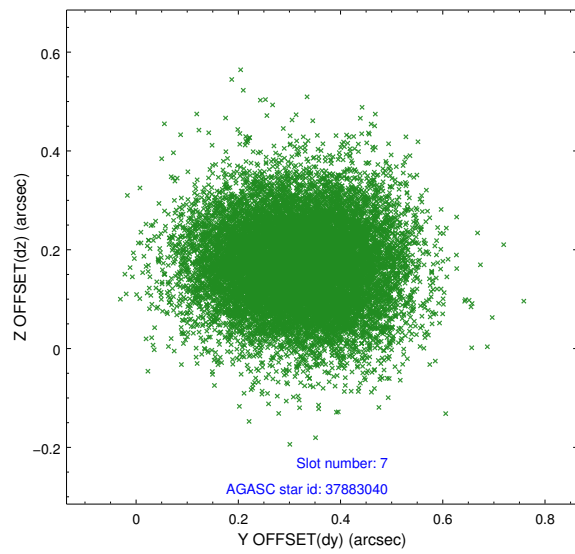
2.4.3 Slot 5



2.4.4 Slot 6

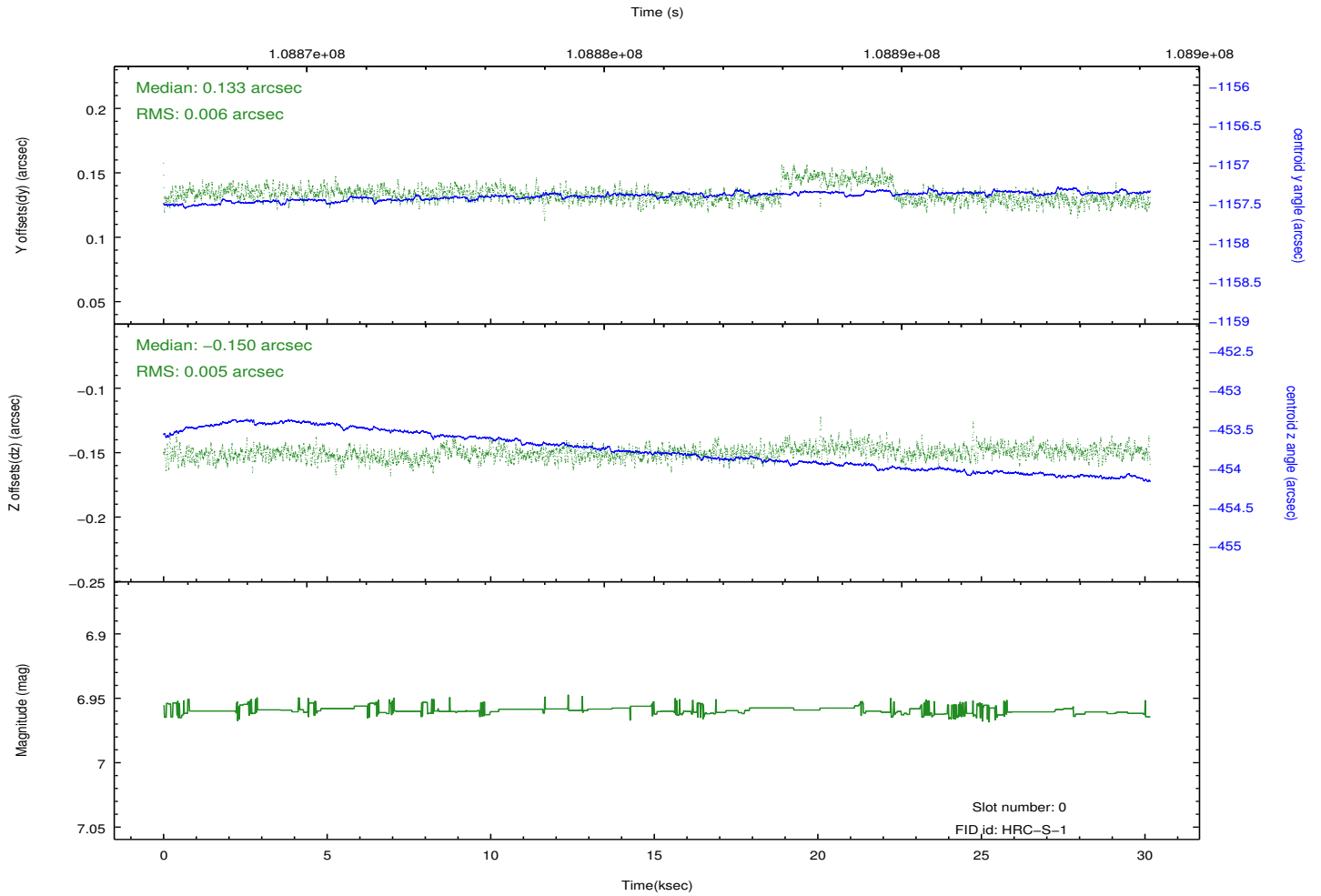
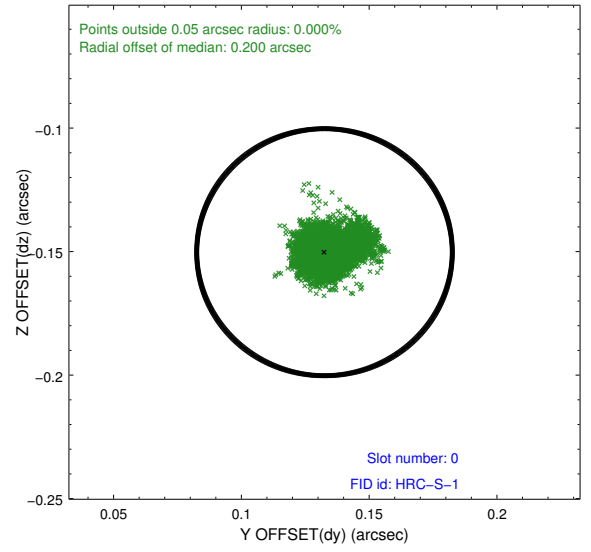
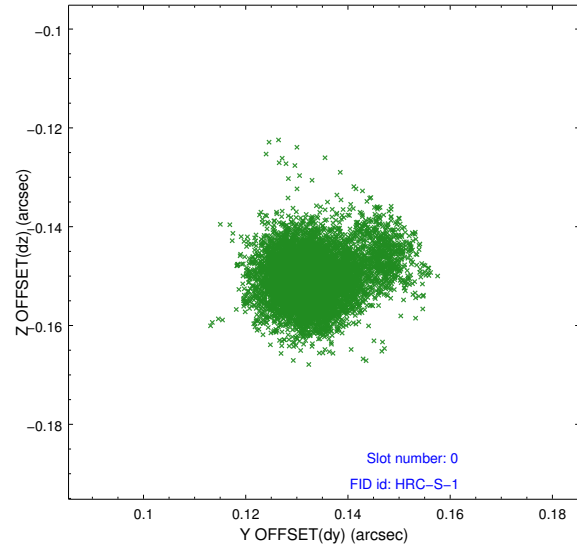


2.4.5 Slot 7

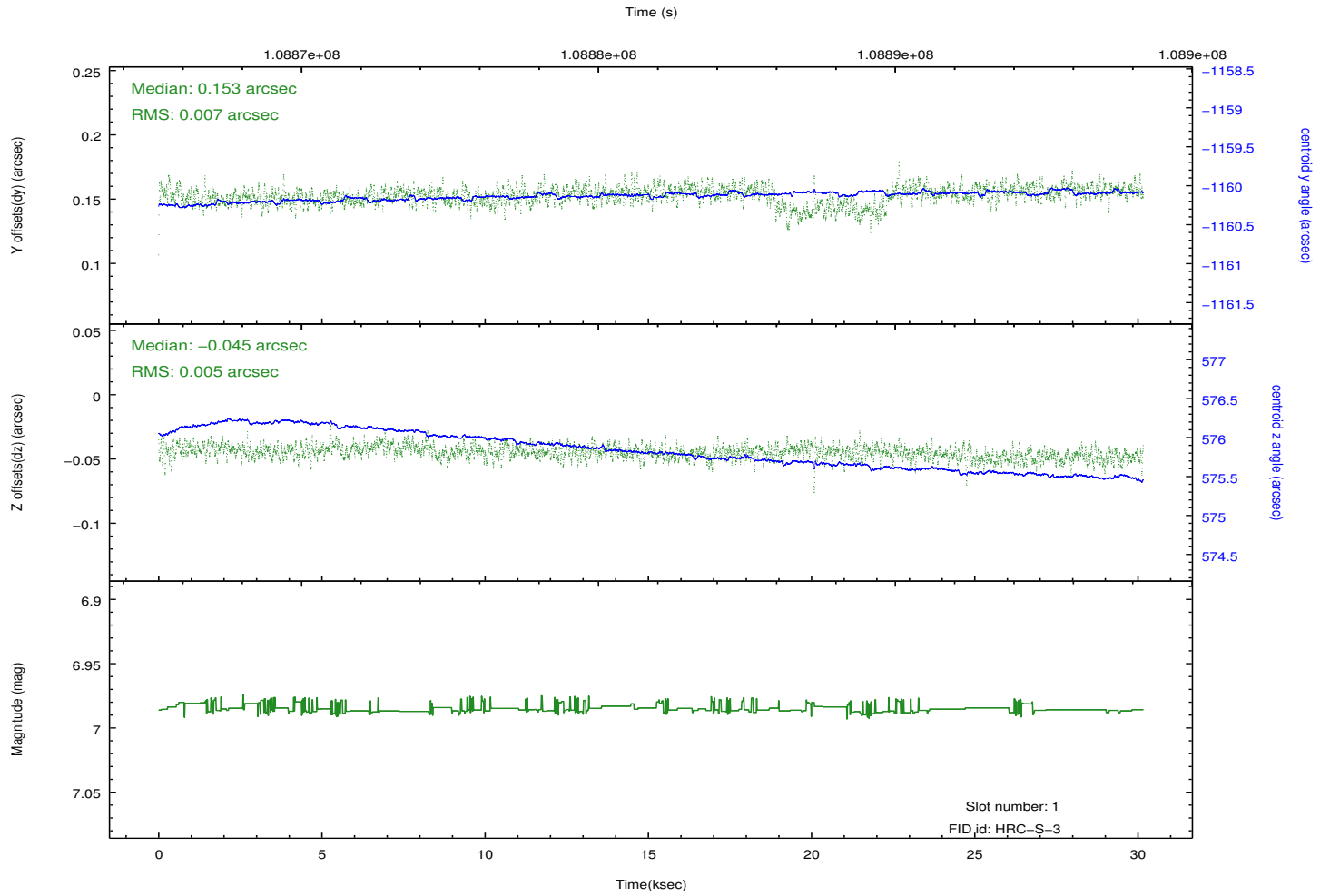
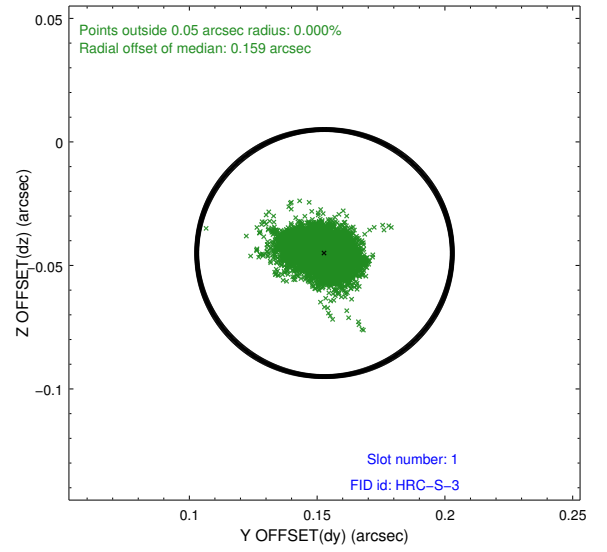
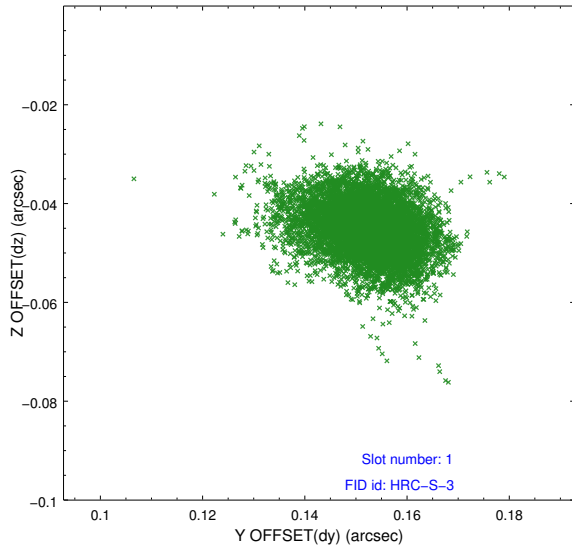


2.5 FID Slots

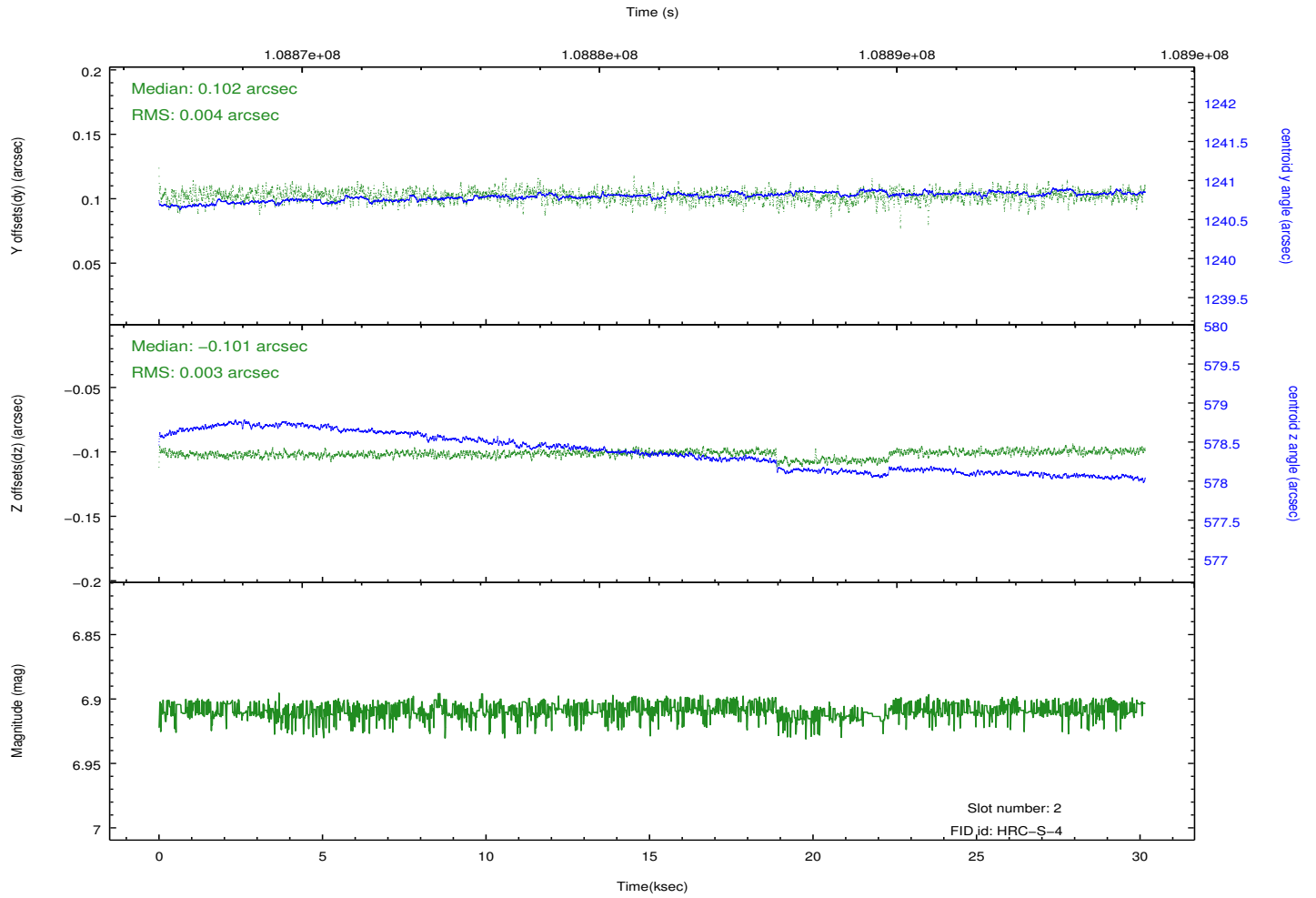
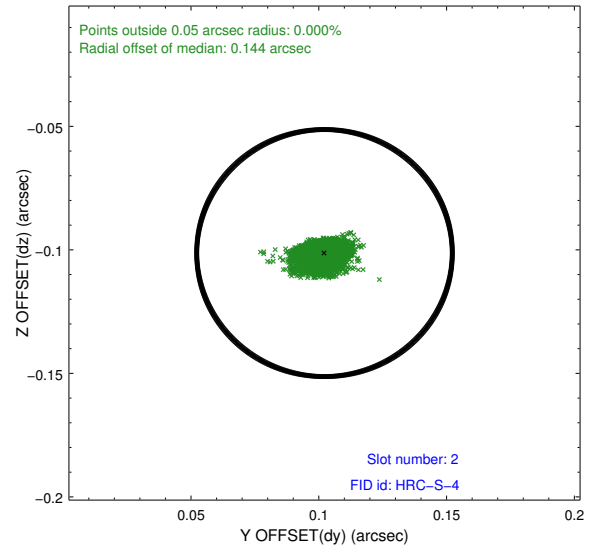
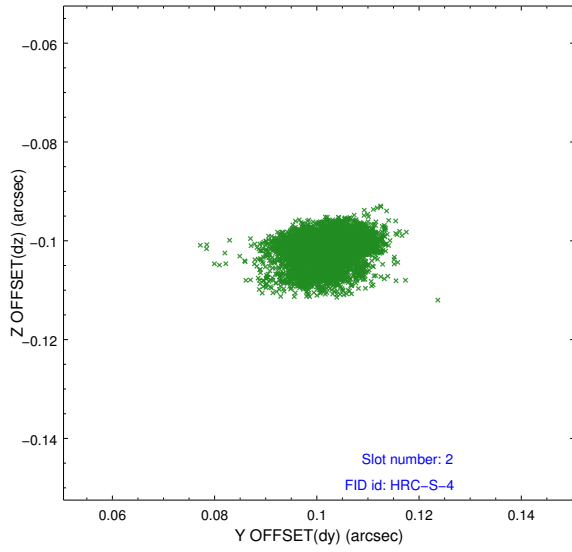
2.5.1 Slot 0



2.5.2 Slot 1

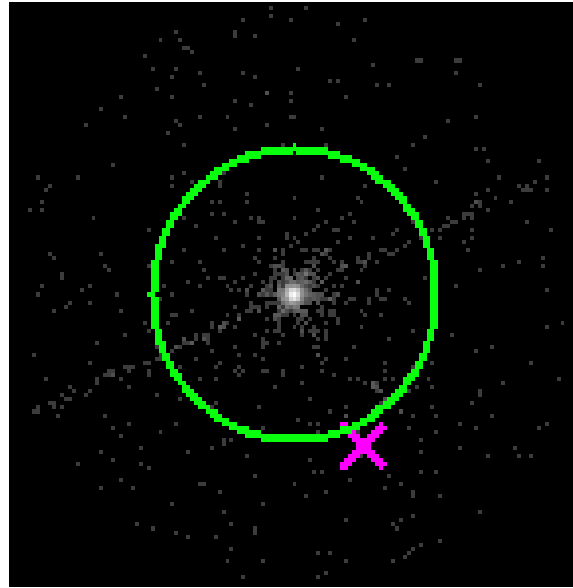


2.5.3 Slot 2

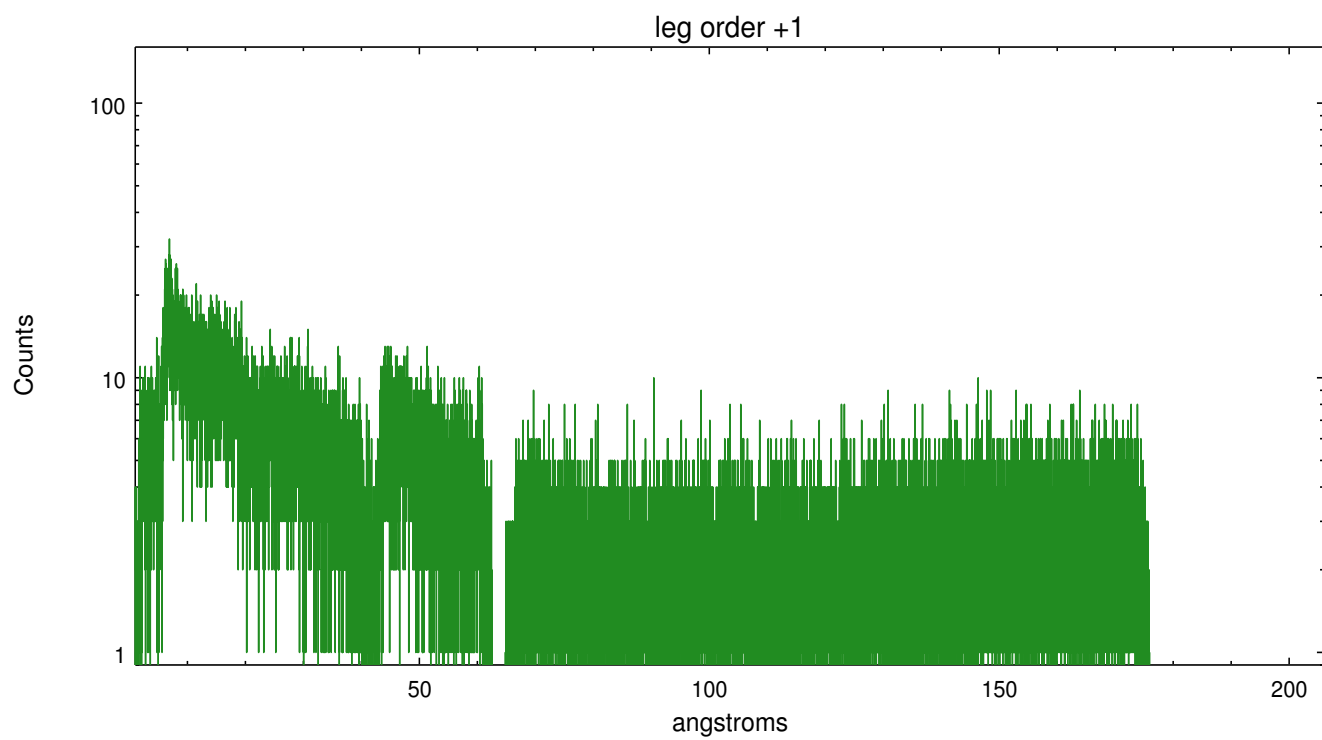
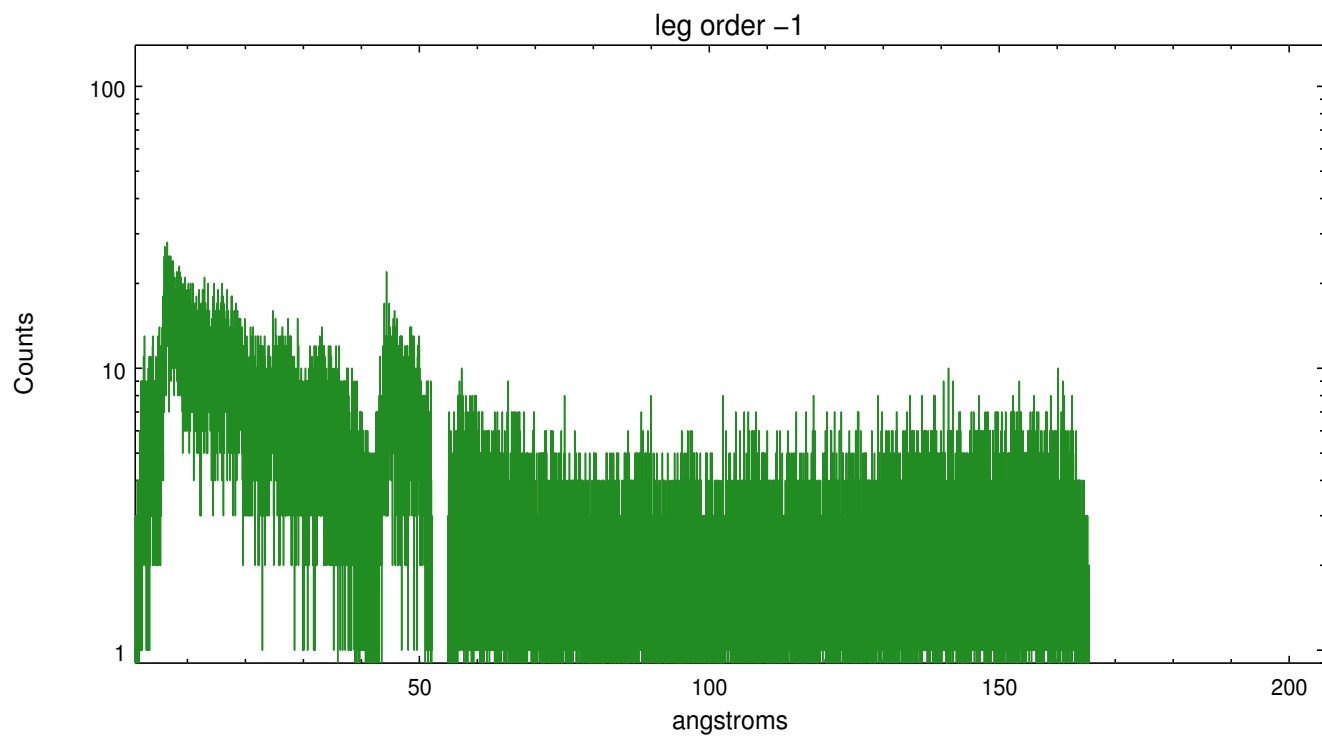


3 Gratings

3.1 LETG Arm



LETG Zero Order



A Summary

A.1 Status

V&V Scientist	Joy Nichols
V&V Date (YYYY-MM-DD)	2012.10.01
V&V Edition	1
V&V Disposition and Status	OK
V&V Charge Time	29.844

A.2 Comments