

V&V Reference Report

L2 ASCDS Version : 8.4.5

Observation 2752 - L2 Version 4
Chandra X-Ray Center

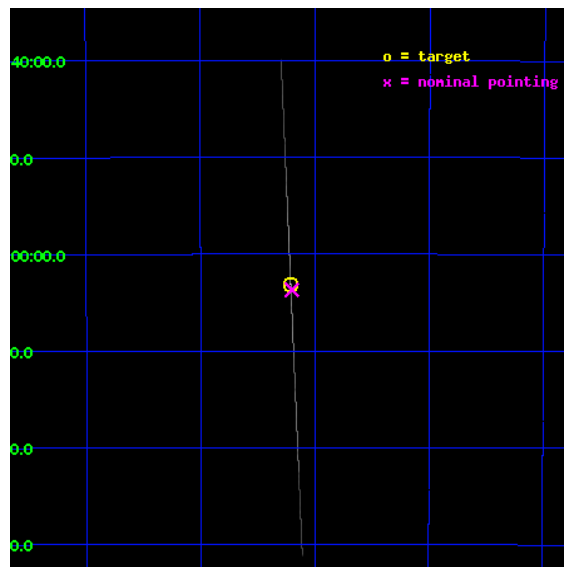
L2 Processing Date : Oct 15 2012

Contents

1	Front	2
2	OBI	3
2.1	OBI	3
2.1.1	Images	3
2.1.2	Bias	3
2.1.3	Parameters	4
2.1.4	Events	4
2.2	Compared Parameters	5
2.3	Aspect	6
2.4	Star Slots	9
2.4.1	Slot 3	9
2.4.2	Slot 4	10
2.4.3	Slot 5	11
2.4.4	Slot 6	12
2.4.5	Slot 7	13
2.5	FID Slots	14
2.5.1	Slot 0	14
2.5.2	Slot 1	15
2.5.3	Slot 2	16
3	Gratings	17
3.1	HEG Arm	17
3.2	MEG Arm	19
A	Summary	21
A.1	Status	21
A.2	Comments	21

1 Front

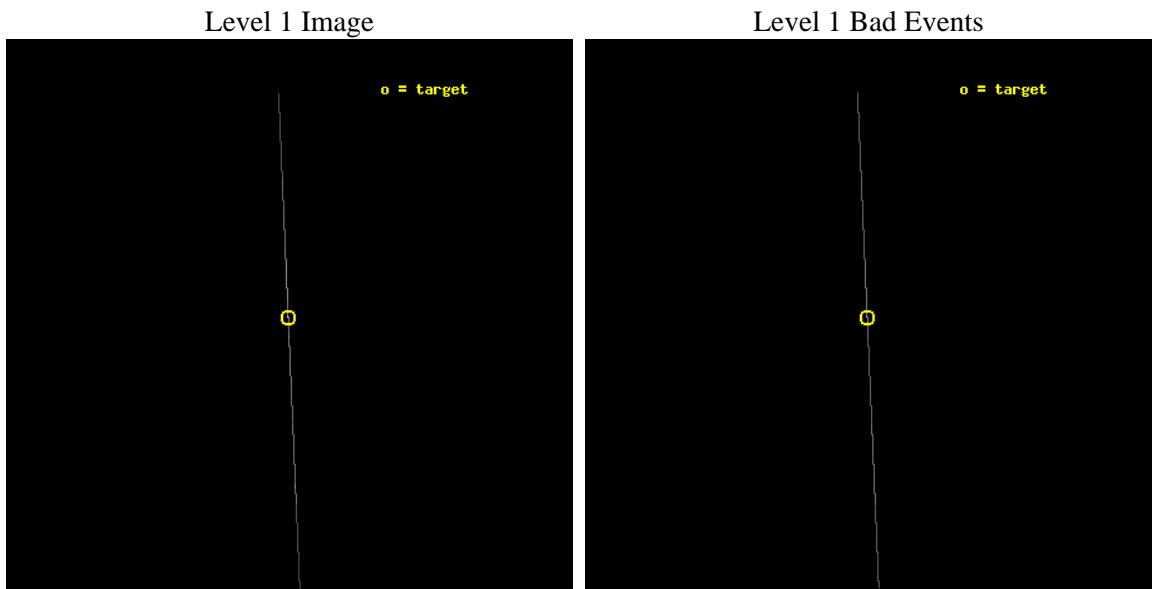
seq_num	400232	Sequence number
obs_id	2752	Observation id
title	``QPO-FOLDED" SPECTROSCOPIC STUDY OF 3 LOW-MASS X-RAY BINARIES AND DIPPING SOURCES	Proposal title
observer	Prof Mariano Mendez	Principal investigator
object	4U 1746-37	Source name
ra_targ	267.552917	Observer's specified target RA [deg]
dec_targ	-37.052222	Observer's specified target Dec [deg]
ra_nom	267.5502561668	Nominal RA [deg]
dec_nom	-37.06166763577	Nominal Dec [deg]
roll_nom	267.48232857199	Nominal Roll [deg]
revision	4	Processing version of data
ontime	40962.0	Sum of GTIs [s]
livetime	40801.9921875	Livetime [s]
ontime4	40962.0	Sum of GTIs [s]
ontime5	40962.0	Sum of GTIs [s]
ontime6	40962.0	Sum of GTIs [s]
ontime7	40962.0	Sum of GTIs [s]
ontime8	40962.0	Sum of GTIs [s]
ontime9	40962.0	Sum of GTIs [s]
l2events	1689935	Number of level 2 events



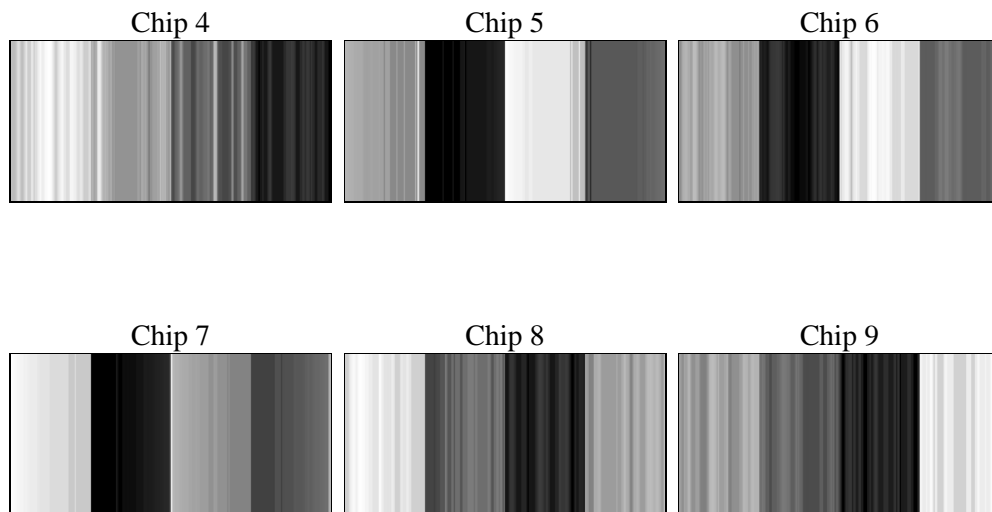
2 OBI

2.1 OBI

2.1.1 Images



2.1.2 Bias



2.1.3 Parameters

obi_num	0	Obi number	sched_exp_time	40807.176000	[s] Scheduled observation exposure time
ascdsver	8.4.5	Processing system revision	ontime	40962.0	Sum of GTIs [s]
caldsver	4.5.2	 	ontime4	40962.0	Sum of GTIs [s]
date	2012-10-14T20:46:17	Date and time of file creation	ontime5	40962.0	Sum of GTIs [s]
revision	3	Processing version of data	ontime6	40962.0	Sum of GTIs [s]
			ontime7	40962.0	Sum of GTIs [s]
			ontime8	40962.0	Sum of GTIs [s]
			ontime9	40962.0	Sum of GTIs [s]
			l1events	1977195	Number of level 1 events

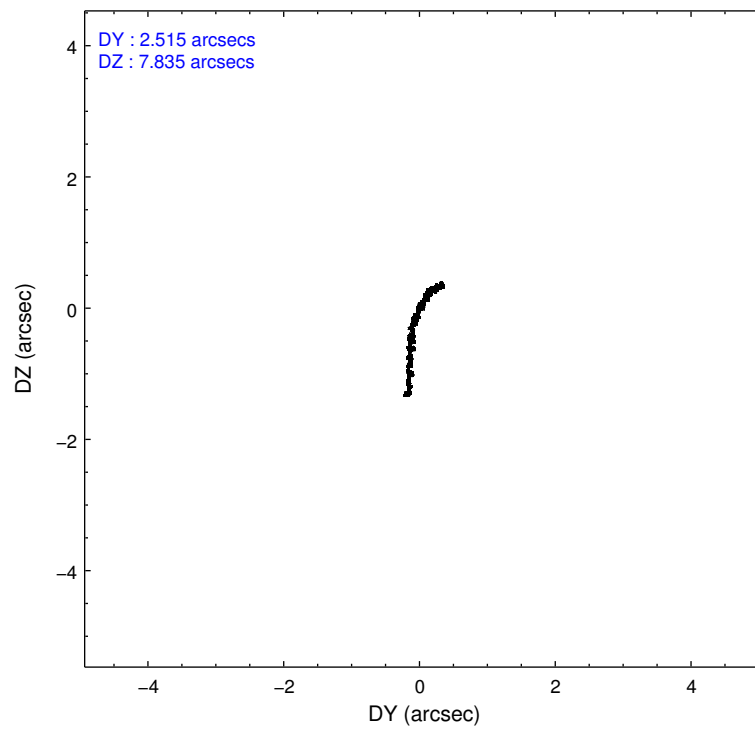
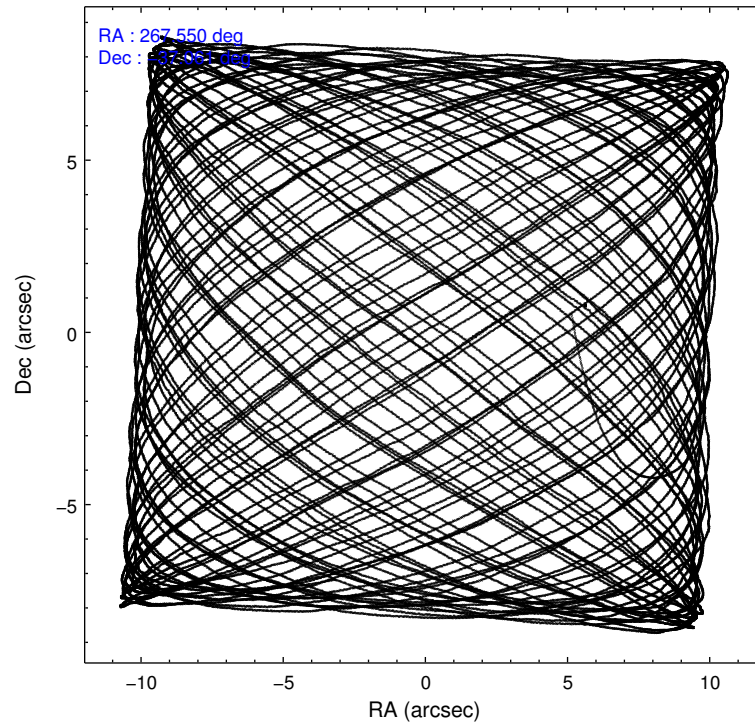
2.1.4 Events

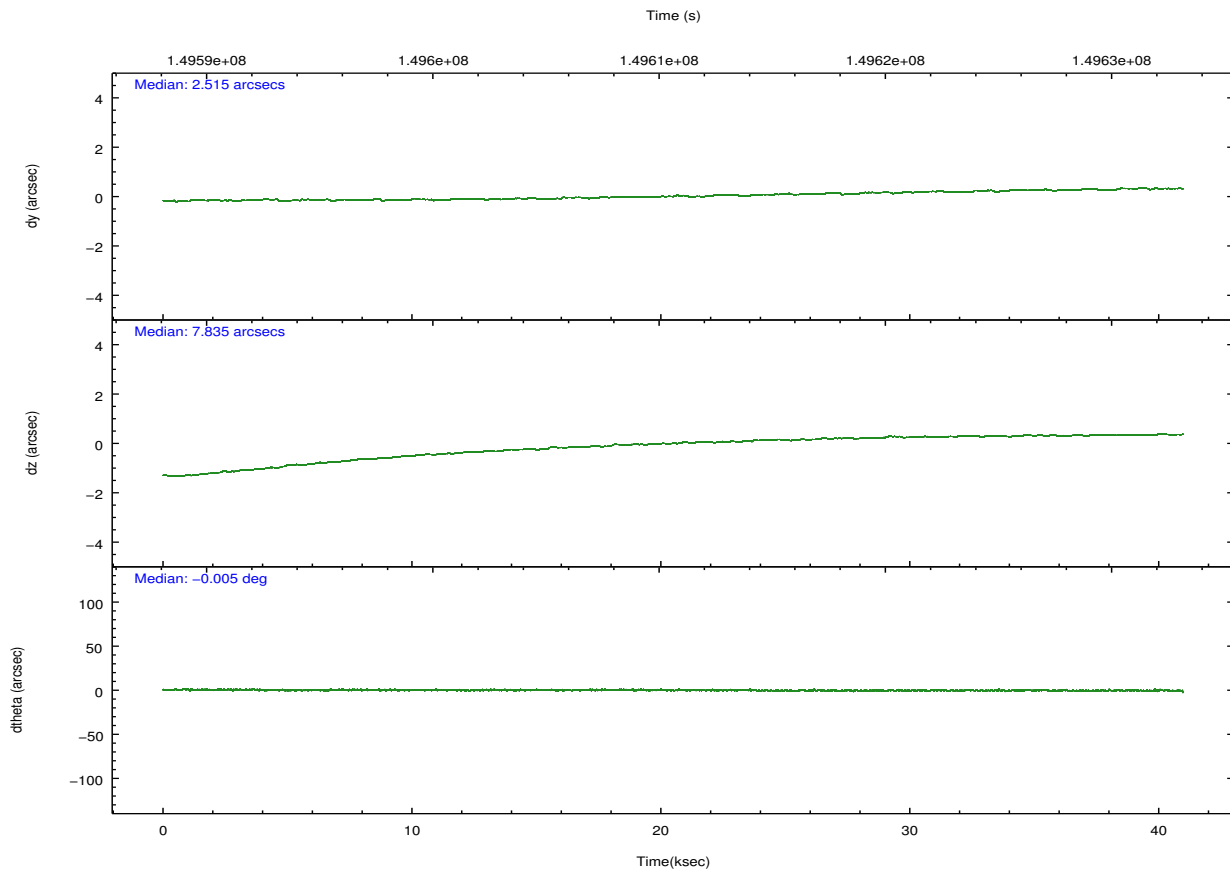
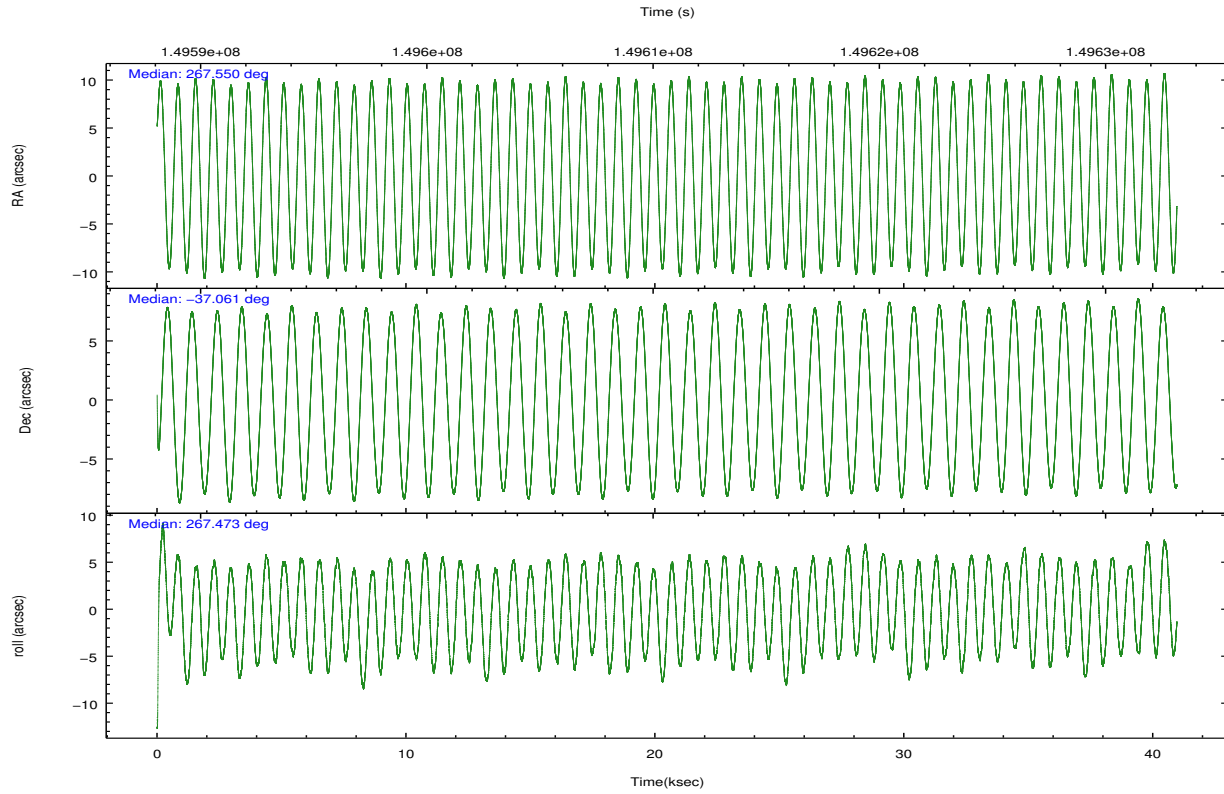
	ccd 4	ccd 5	ccd 6	ccd 7	ccd 8	ccd 9		ccd 4	ccd 5	ccd 6	ccd 7	ccd 8	ccd 9
level 1 events	69840	284759	313028	1001718	227955	79895	grade 0 events	11809	54620	31933	198454	72268	14691
rejected events	10639	30002	13660	49742	17091	12105		16%	19%	10%	19%	31%	18%
rejected %	15%	10%	4%	4%	7%	15%	grade 1 events	232	367	219	2969	439	229
								0%	0%	0%	0%	0%	0%
							grade 2 events	24369	78938	221150	245724	86553	29254
								34%	27%	70%	24%	37%	36%
							grade 3 events	6987	8558	7587	100731	12980	6133
								10%	3%	2%	10%	5%	7%
							grade 4 events	7009	8338	7177	98336	12913	6421
								10%	2%	2%	9%	5%	8%
							grade 5 events	9501	24255	11805	40862	14724	10875
								13%	8%	3%	4%	6%	13%
							grade 6 events	9933	109683	33157	314642	28078	12292
								14%	38%	10%	31%	12%	15%
							grade 7 events	0	0	0	0	0	0
								0%	0%	0%	0%	0%	0%

2.2 Compared Parameters

Parameter	Planned	Actual	Parameter	Planned	Actual
Instrument	ACIS	ACIS	Obspar format version number	7	7
Detector	ACIS-456789	ACIS-456789	Obspar file type	PREDICTED	ACTUAL
Grating	HETG	HETG	Obspar update status	NONE	UPDATED
Data mode	CC33_FAINT	CC33_FAINT	Number of optional ACIS chips dropped	0	0
Observation mode	POINTING	POINTING	On-chip summing requested	N	N
[deg] Pointing RA	267.534117	267.5502561668031	Subarray requested	NONE	NONE
[deg] Pointing Dec	-37.037671	-37.06166763576978	Alternating exposures requested	N	N
[deg] Pointing Roll	267.315985	267.4823285719948	[s] Primary exposure time	0.000000	0
[mm] SIM focus pos	-0.684267	-0.6828225247311905			
[mm] SIM defocus	0	0.001444936568705701			
[mm] SIM translation stage pos	-186.132523	-186.1423047203915			
[mm] SIM translation stage offset	-4	-3.990217862616333			
[s] Observation start time (MET)	149590295.184000	149589199.38955			
Observation start date	2002-09-28T08:50:31	2002-09-28T08:33:19			
[s] Observation end time (MET)	149631102.184000	149631416.5788			
Observation end date	2002-09-28T20:10:38	2002-09-28T20:16:56			
Read mode	CONTINUOUS	CONTINUOUS			

2.3 Aspect



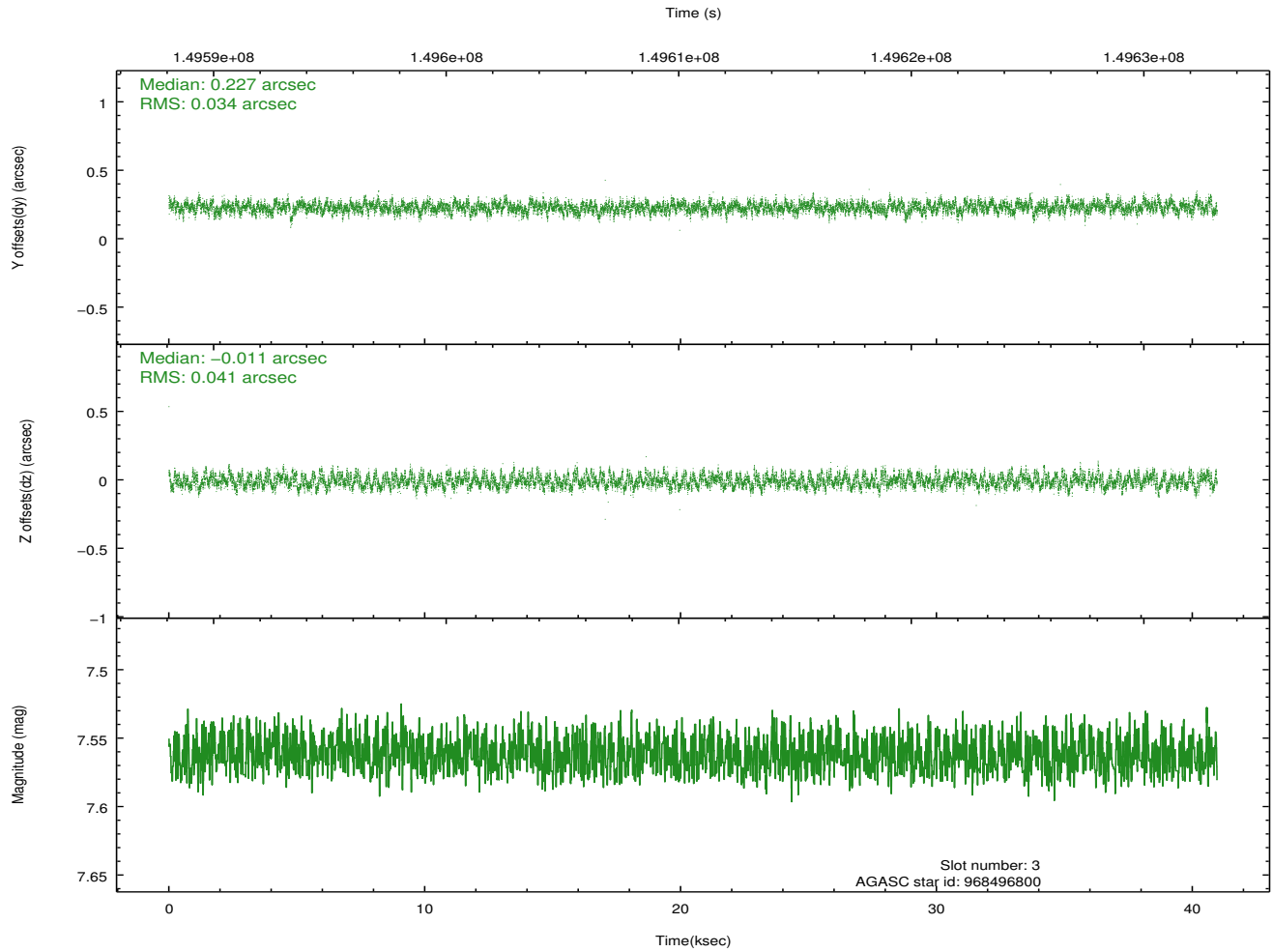
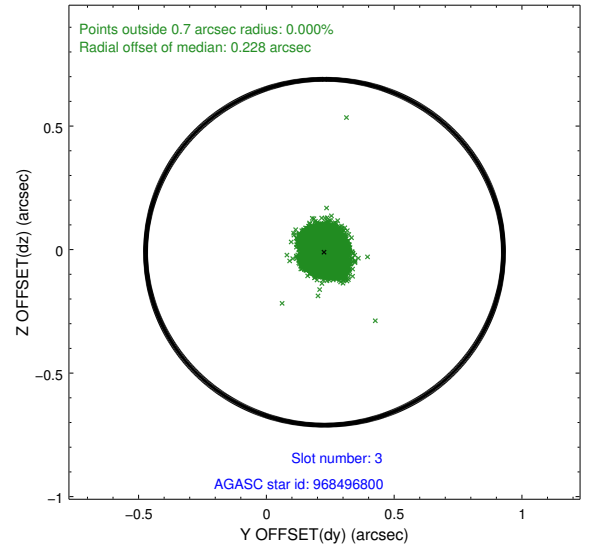
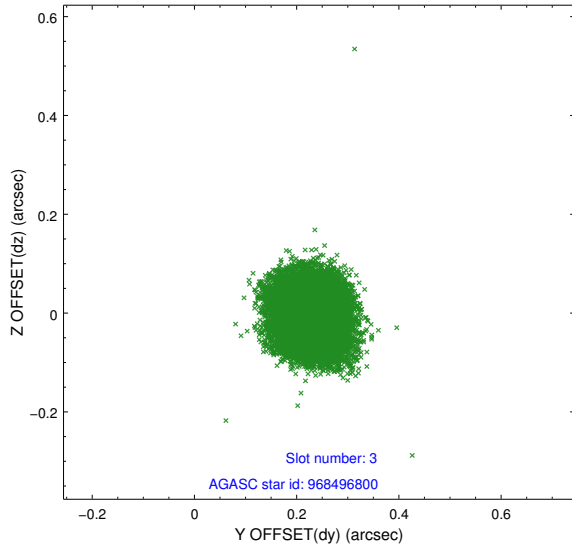


Slot Statistics

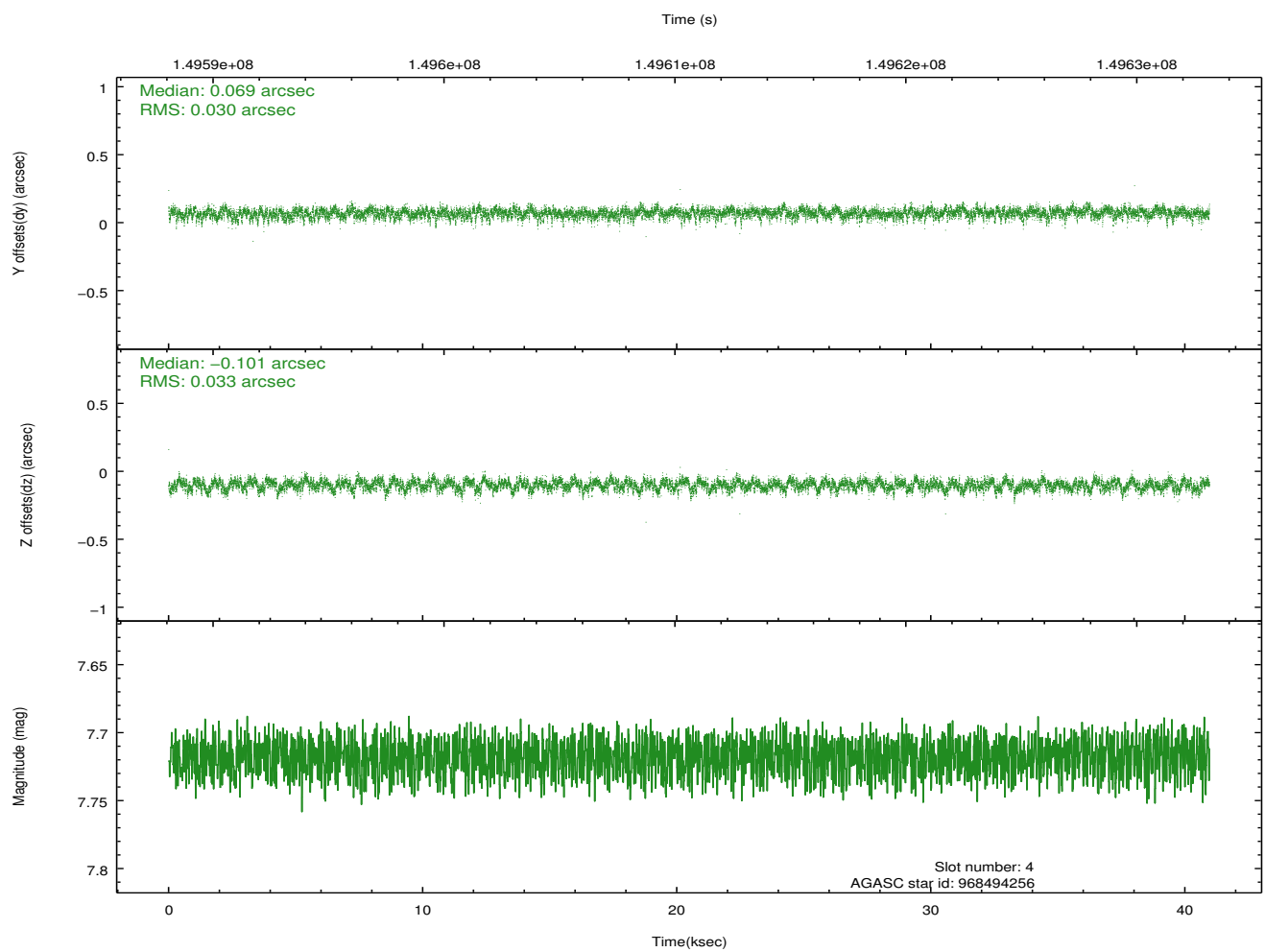
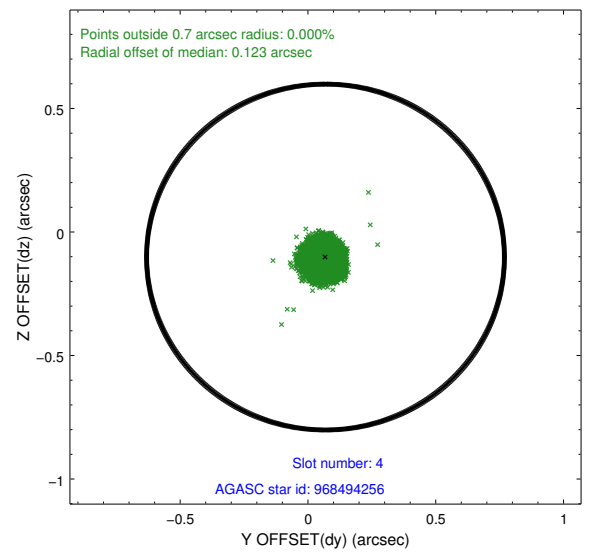
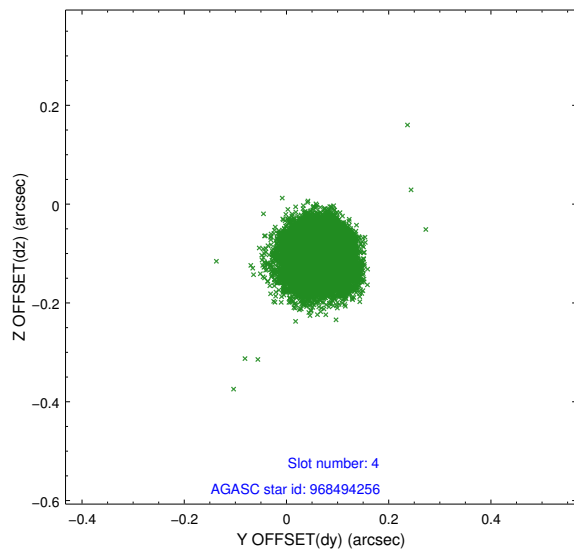
slot	status	id	mag	n_pts	med_dy	med_dz	dr1	dr2	ra	dec	mean_y	mean_z
0	FID	ACIS-S-2	7.09	9993	-0.033	-0.025	0.007	0.011	0.000000	0.000000	-754.90	-1811.21
1	FID	ACIS-S-4	7.19	9991	0.024	0.011	0.009	0.015	0.000000	0.000000	2158.39	97.33
2	FID	ACIS-S-6	7.38	9991	-0.018	0.021	0.010	0.018	0.000000	0.000000	407.06	734.72
3	GUIDE	968496800	7.56	19979	0.227	-0.011	0.057	0.090	267.208106	-37.412075	1393.32	-867.25
4	GUIDE	968494256	7.72	19982	0.069	-0.101	0.047	0.079	266.804762	-36.985927	-78.02	-2103.02
5	GUIDE	968631248	7.41	19983	-0.058	0.051	0.065	0.103	268.057771	-37.130491	268.55	1517.68
6	GUIDE	968639480	8.41	19977	-0.069	0.236	0.080	0.129	268.374987	-36.508559	-2005.15	2342.36
7	GUIDE	968503504	8.60	19977	-0.165	-0.163	0.086	0.140	266.716766	-36.547676	-1639.82	-2443.23

2.4 Star Slots

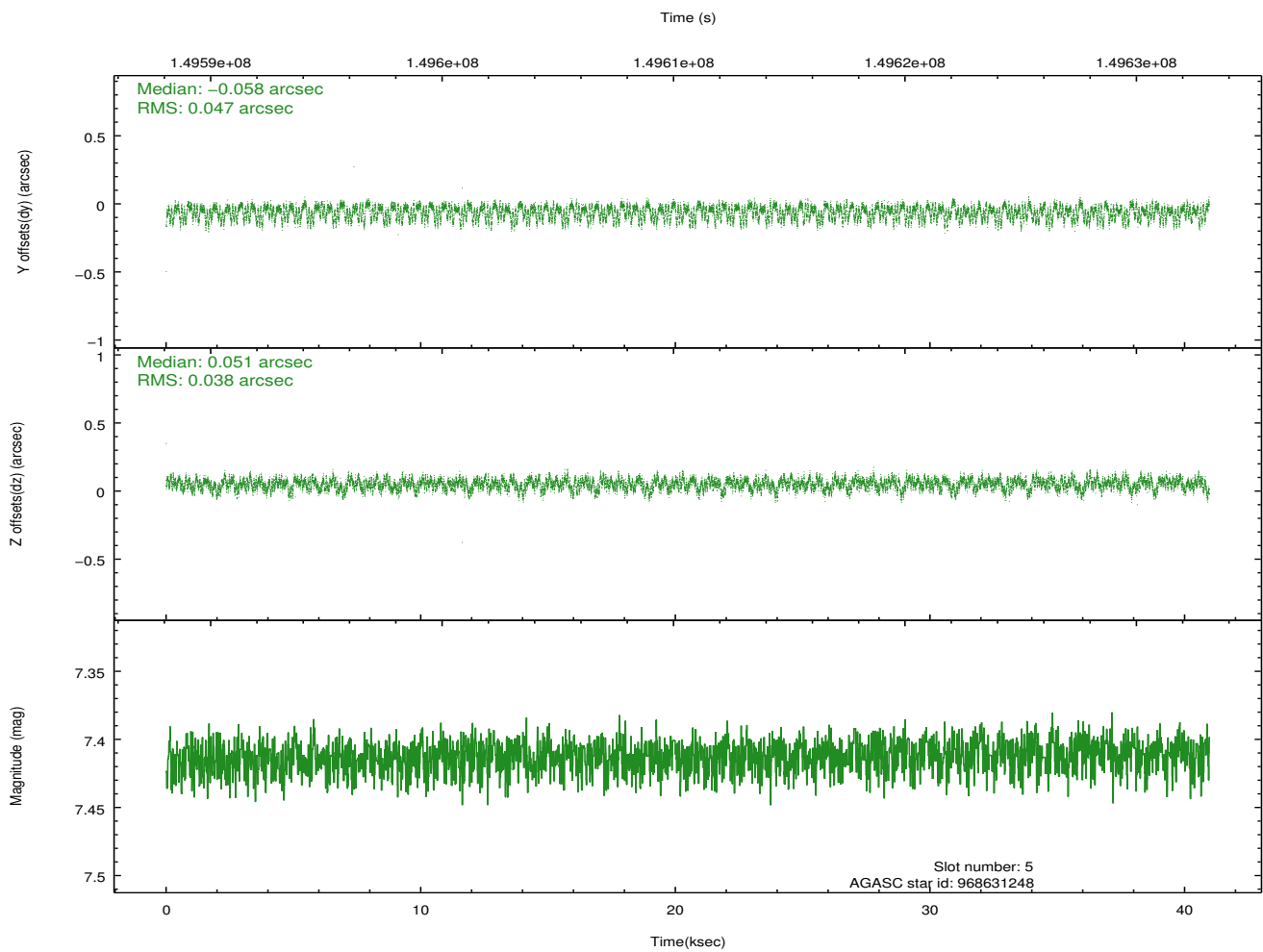
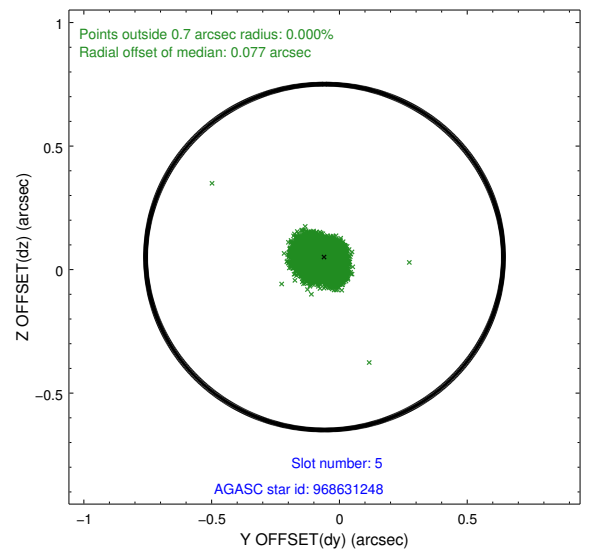
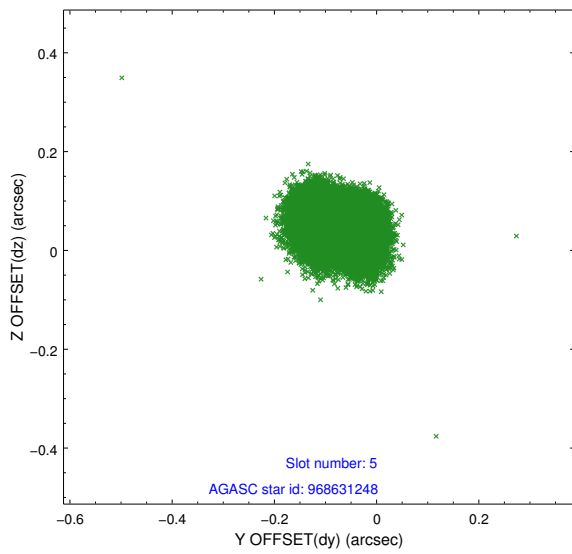
2.4.1 Slot 3



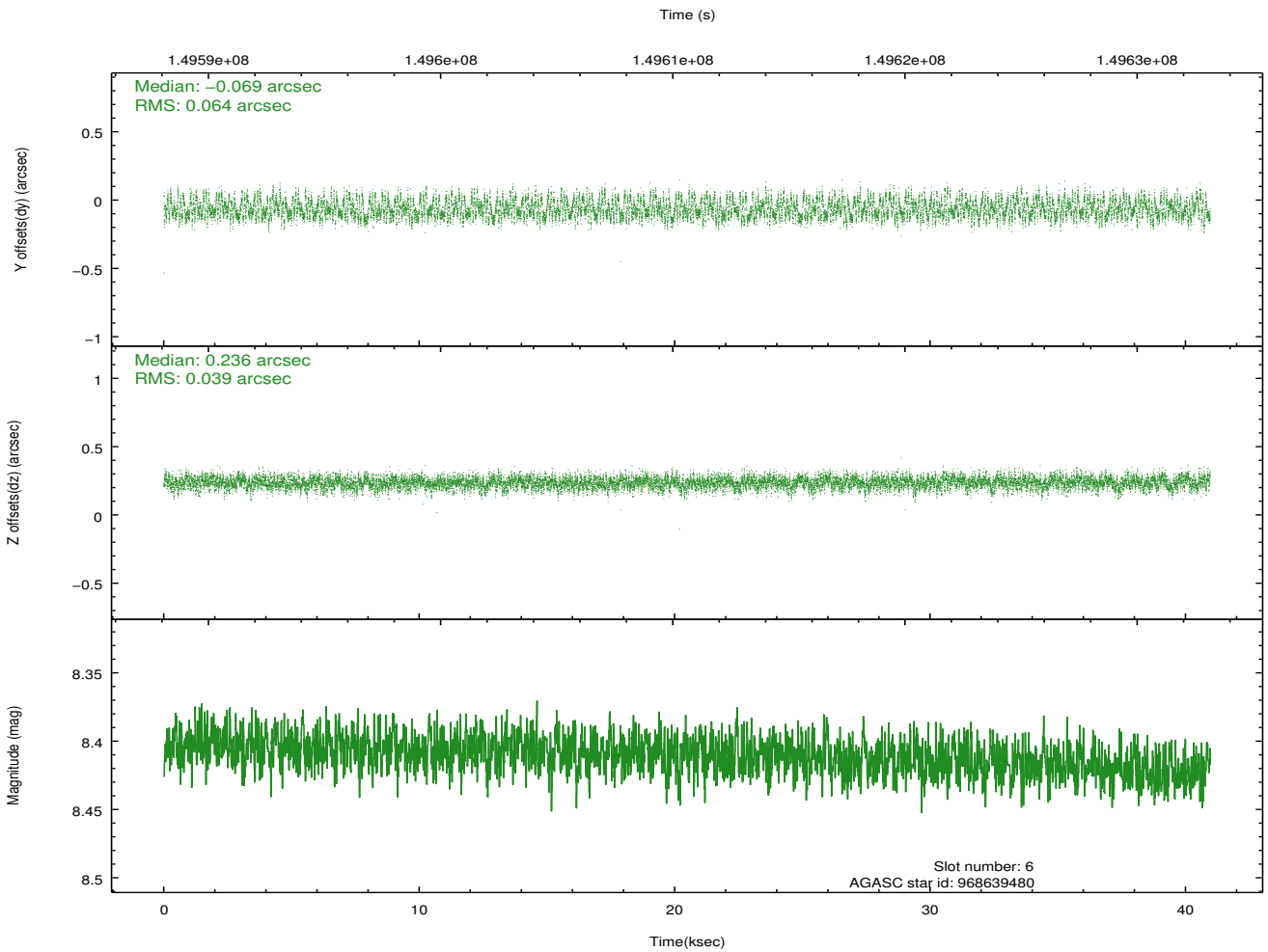
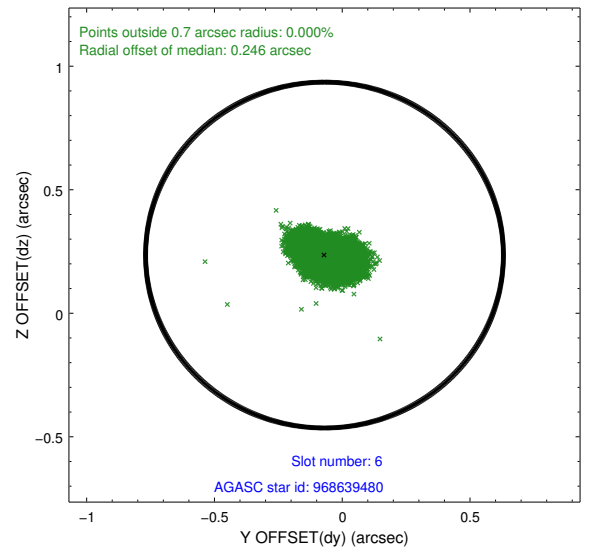
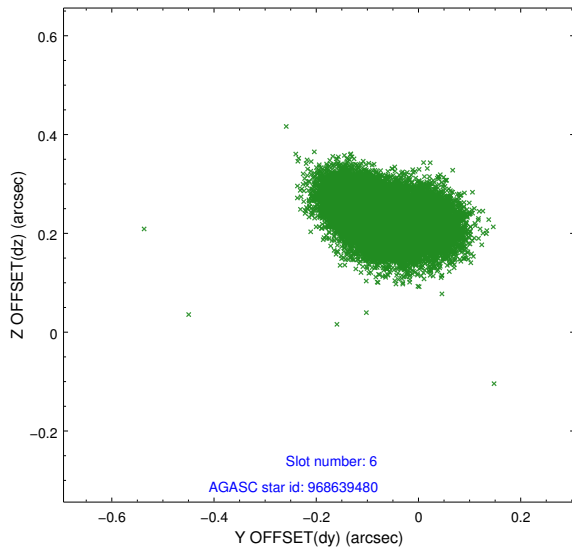
2.4.2 Slot 4



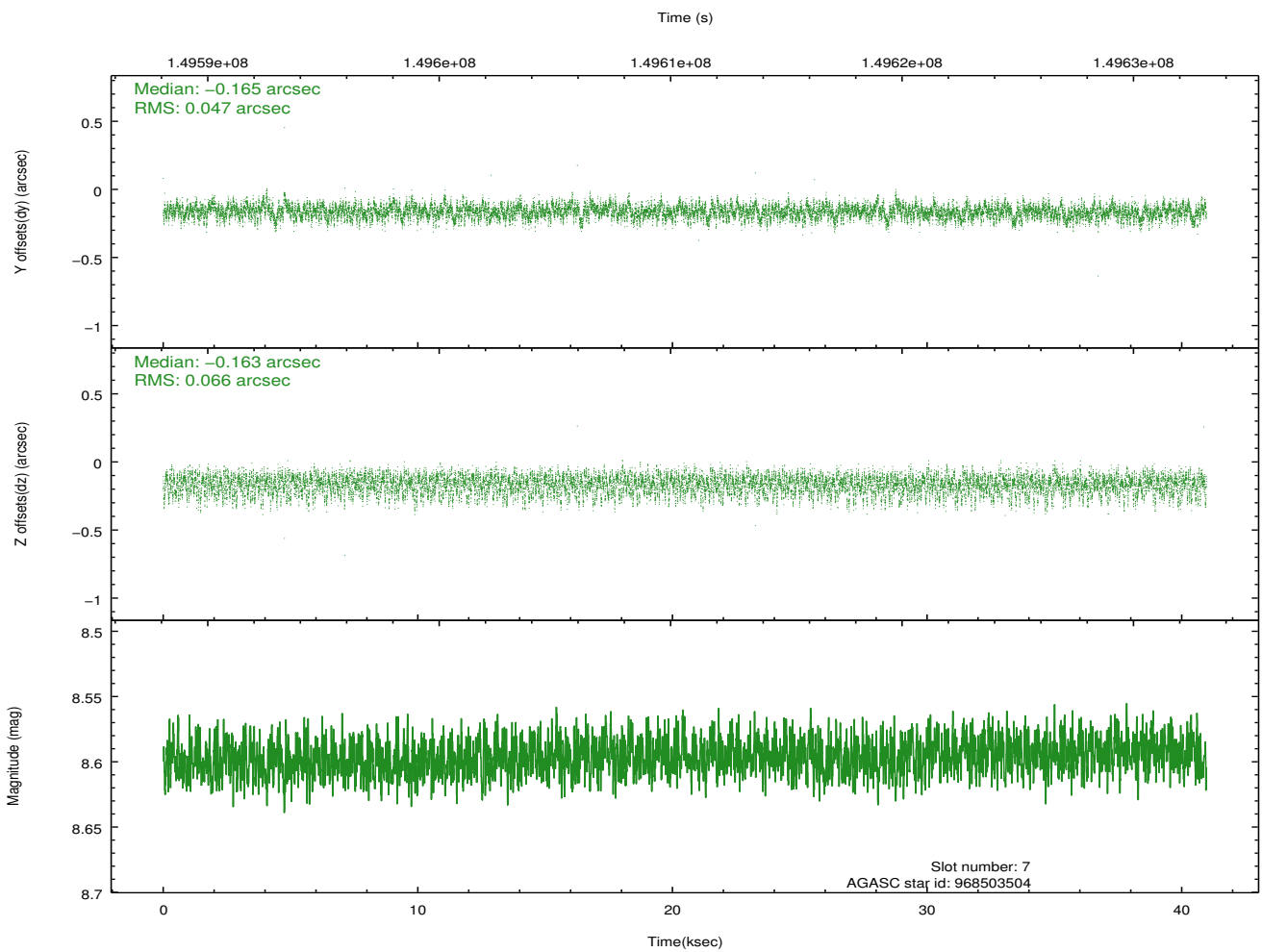
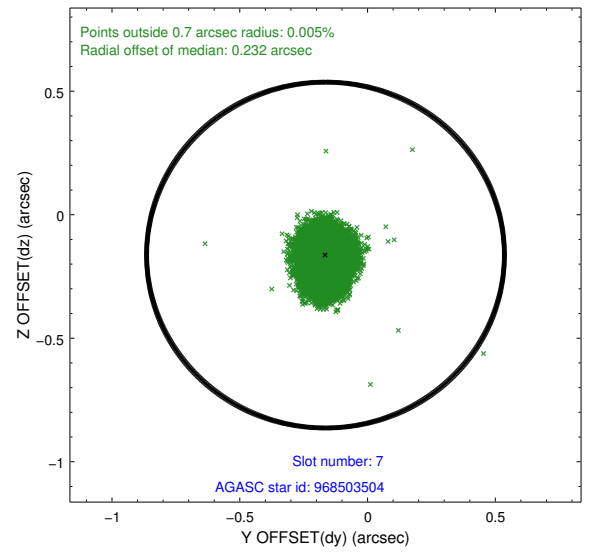
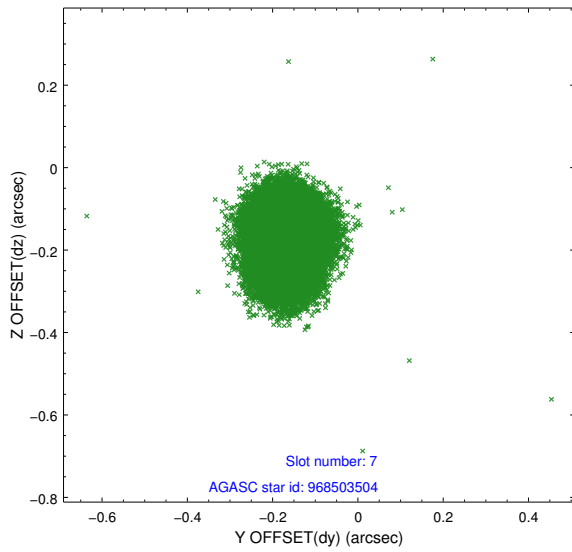
2.4.3 Slot 5



2.4.4 Slot 6

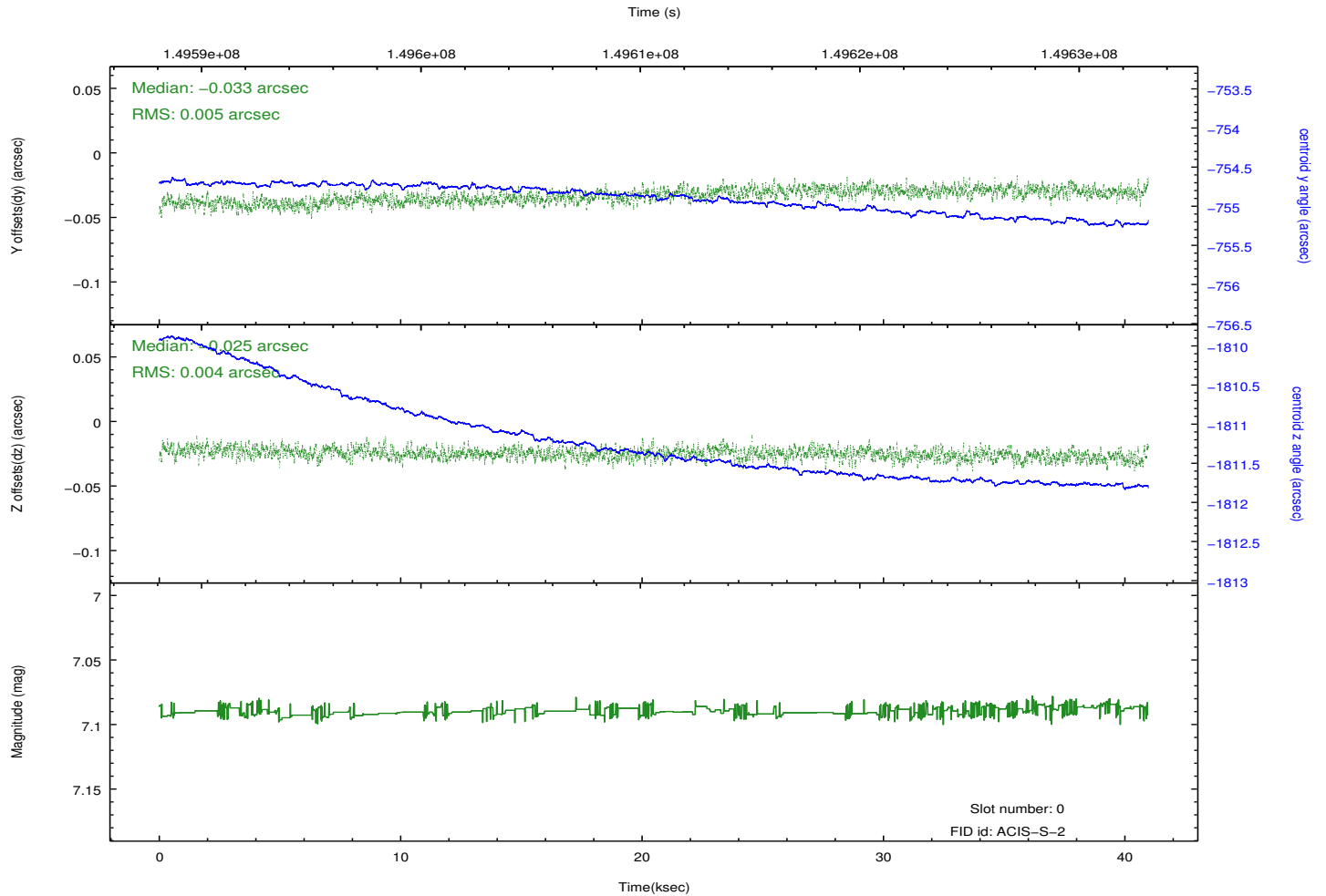
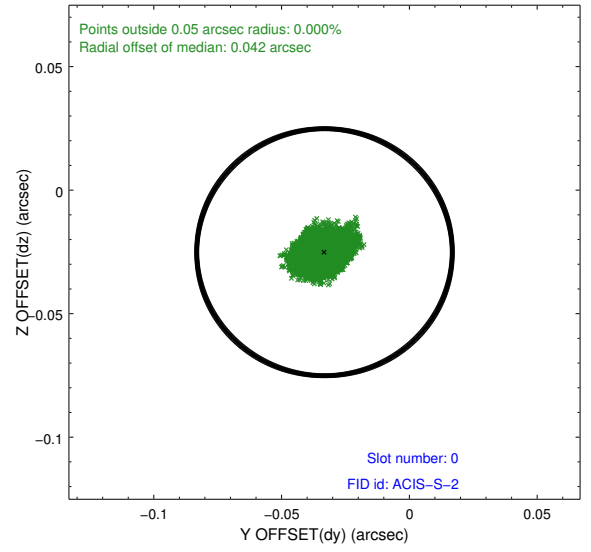
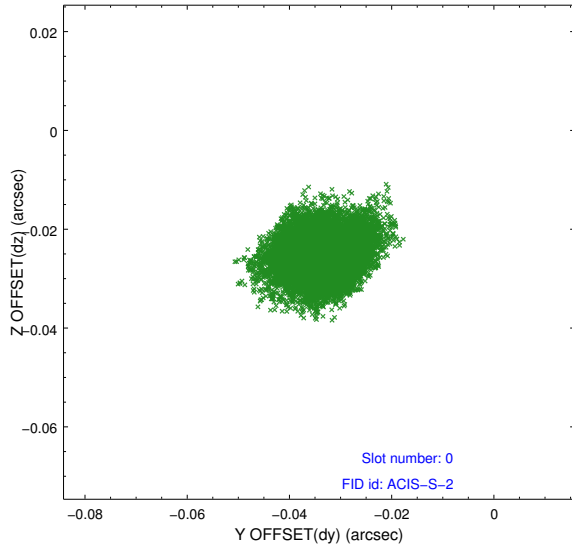


2.4.5 Slot 7

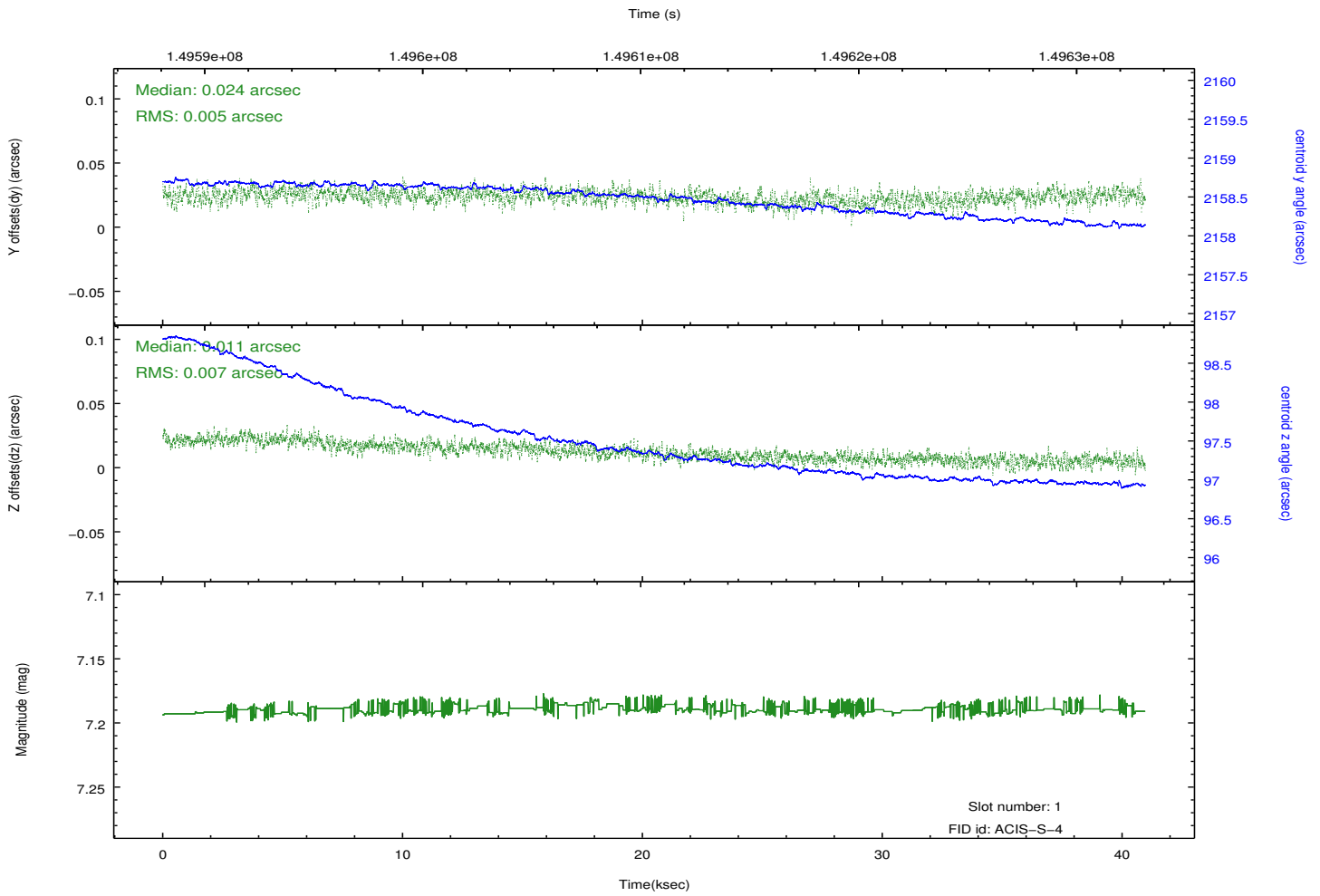
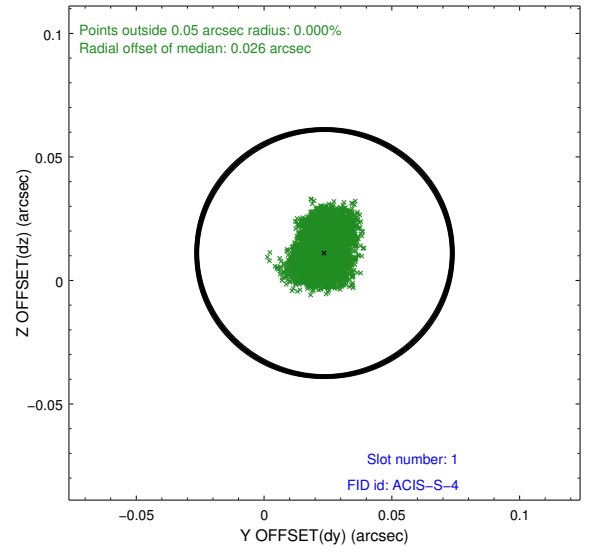
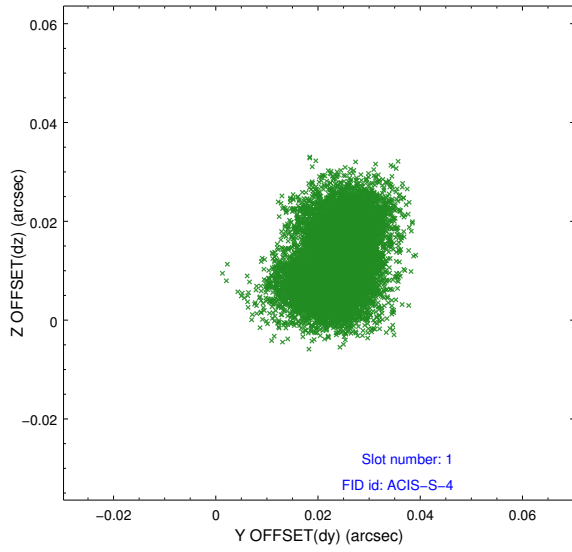


2.5 FID Slots

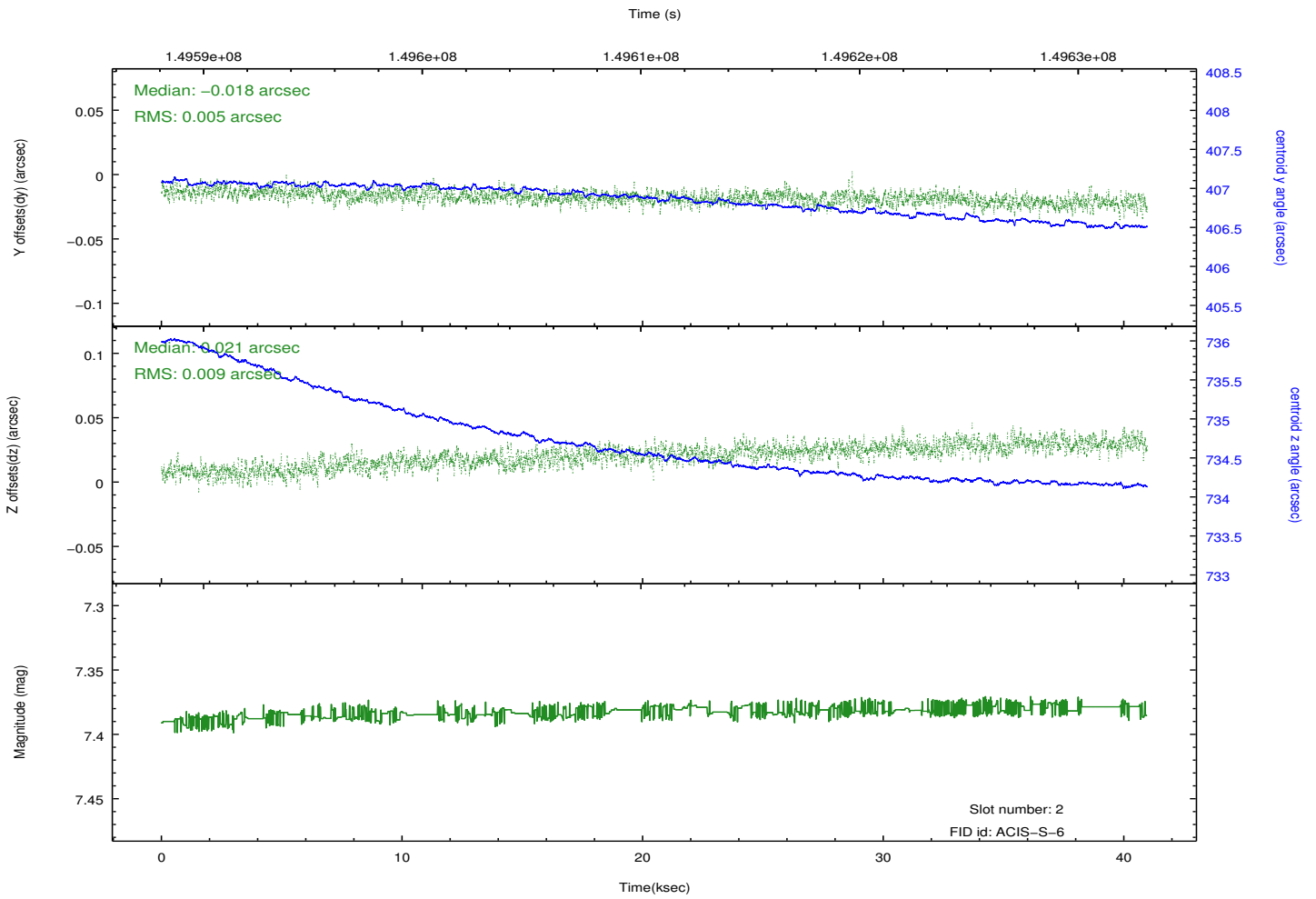
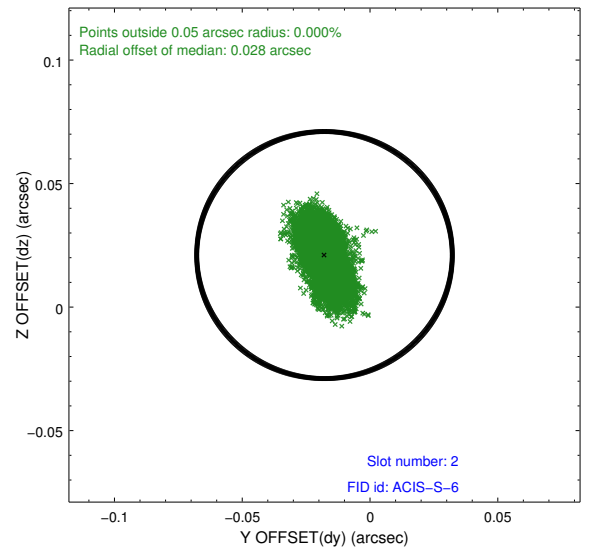
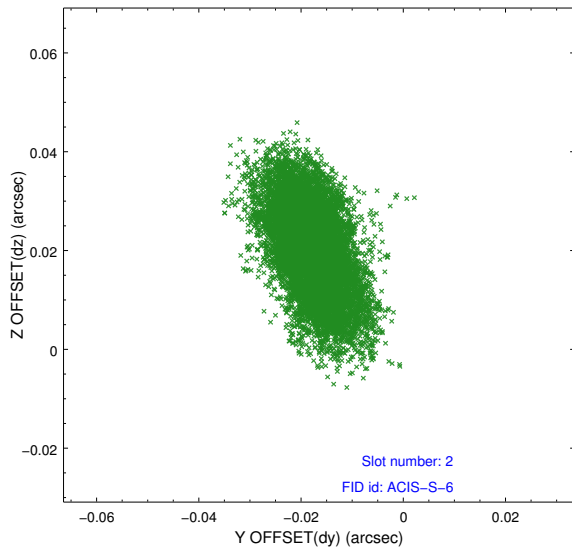
2.5.1 Slot 0



2.5.2 Slot 1

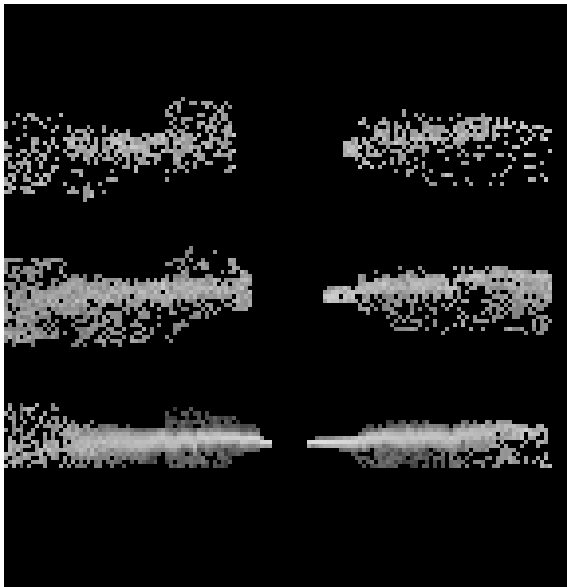


2.5.3 Slot 2

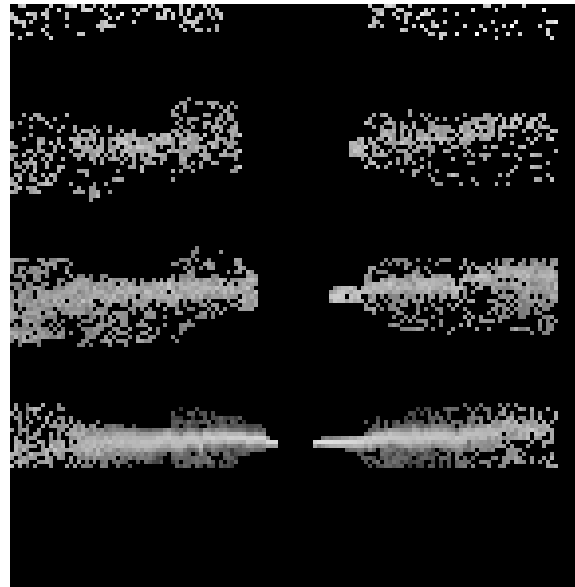


3 Gratings

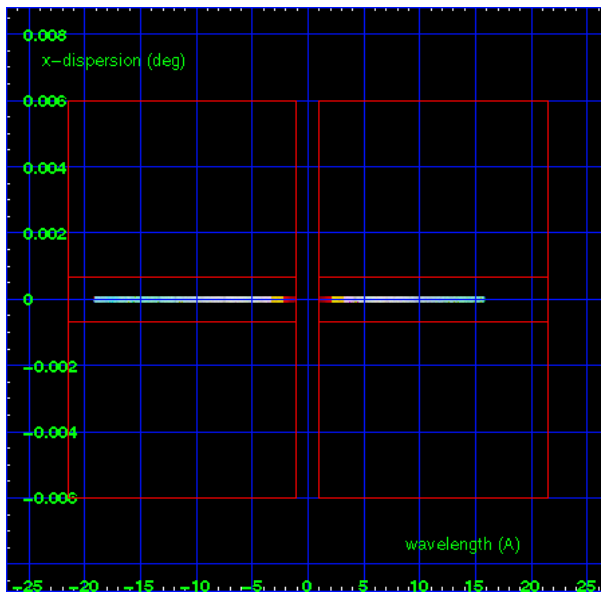
3.1 HEG Arm



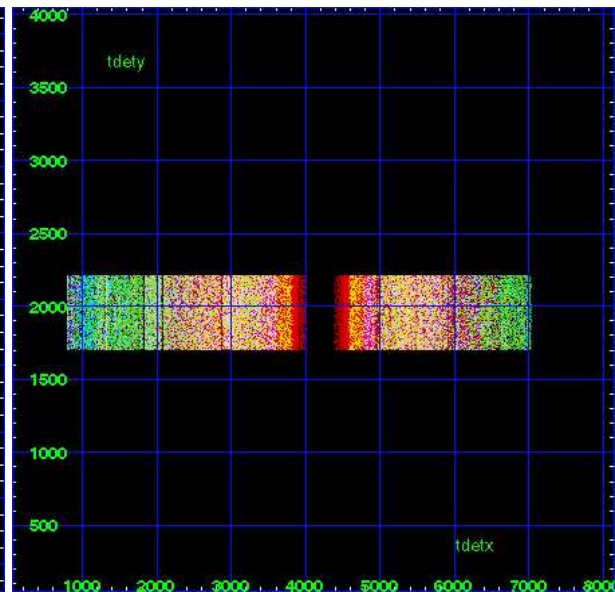
HEG Order Sort 123



HEG Order Sort ALL

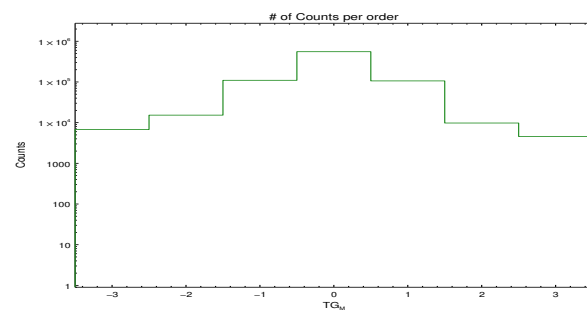


Spot Image HEG

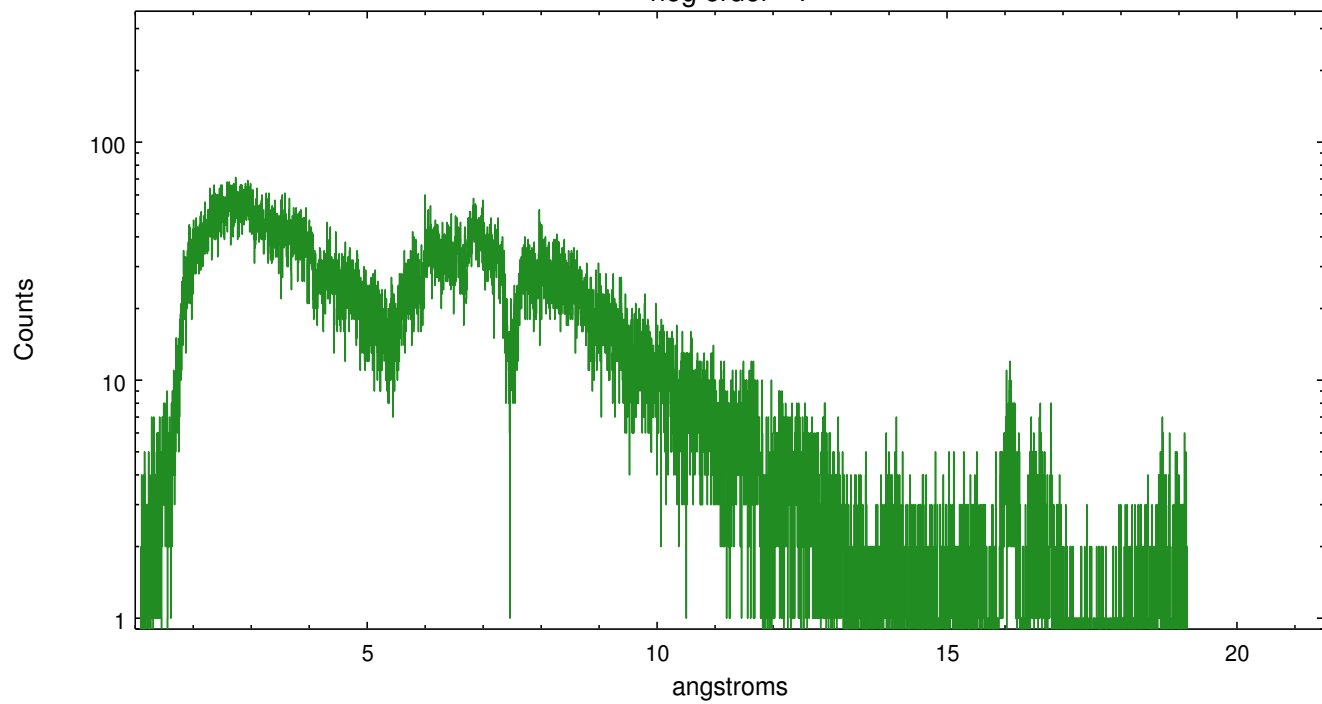


Full Detector HEG

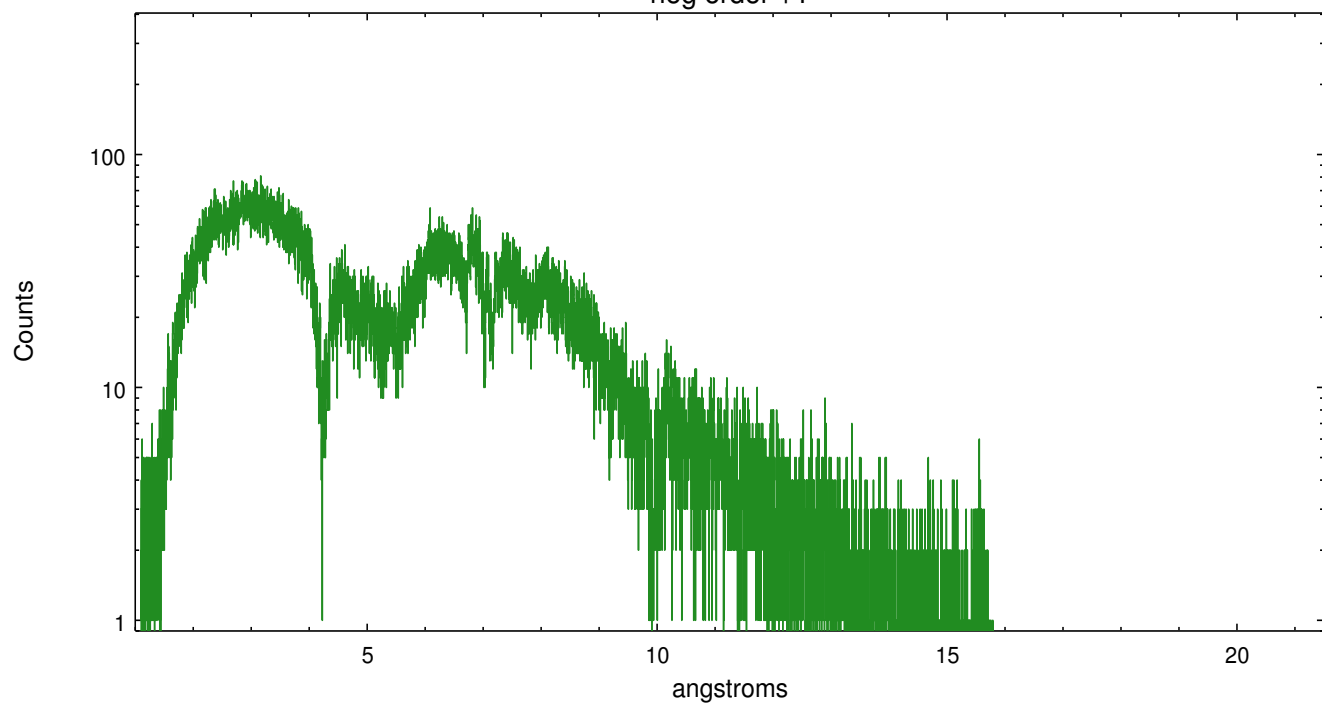
	order -3	order -2	order -1	order 0	order 1	order 2	order 3
Events	6779	15284	109729	554806	106201	9786	4562



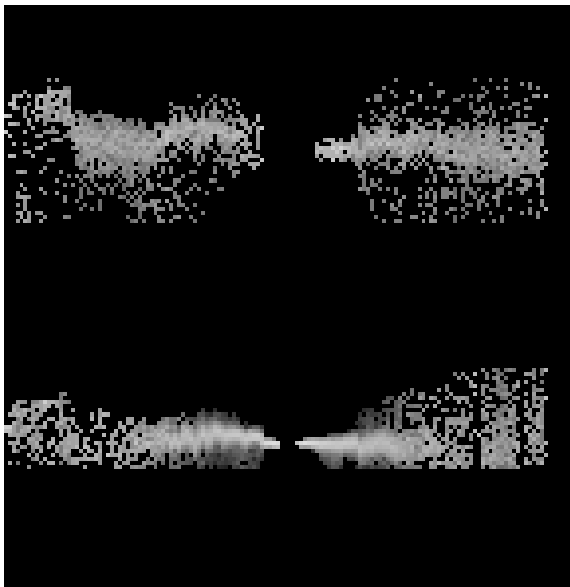
heg order -1



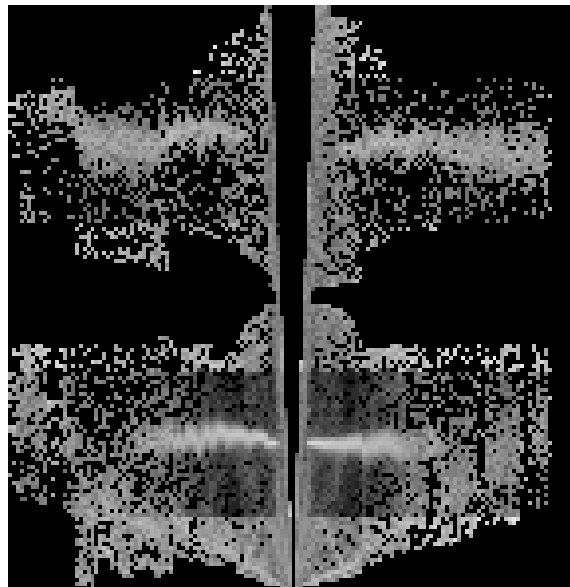
heg order +1



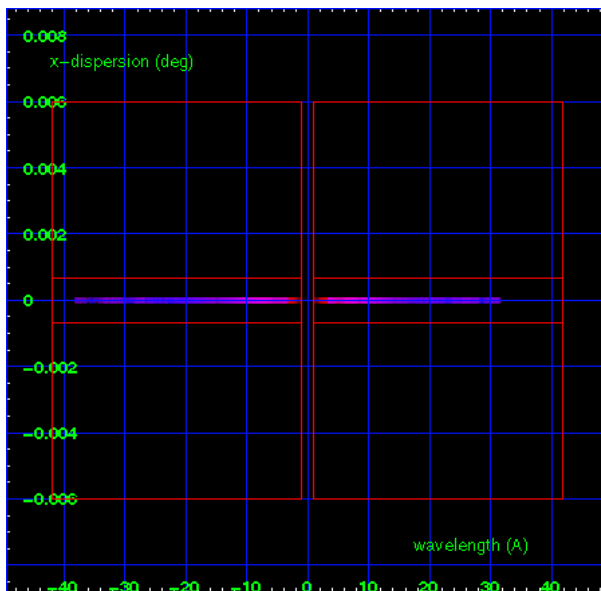
3.2 MEG Arm



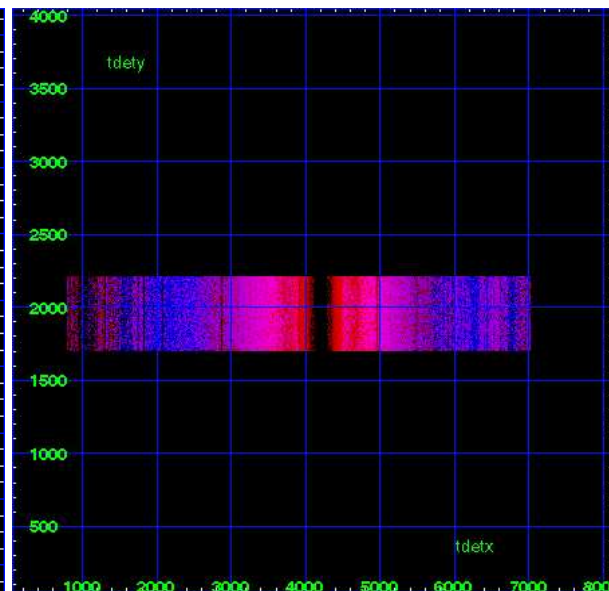
MEG Order Sort 123



MEG Order Sort ALL

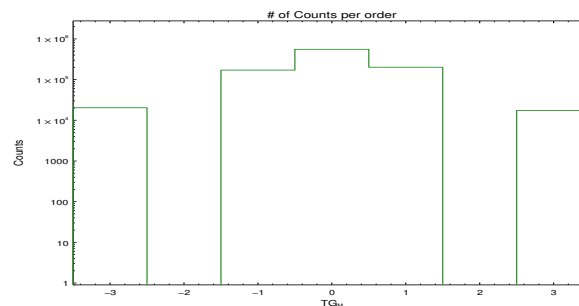


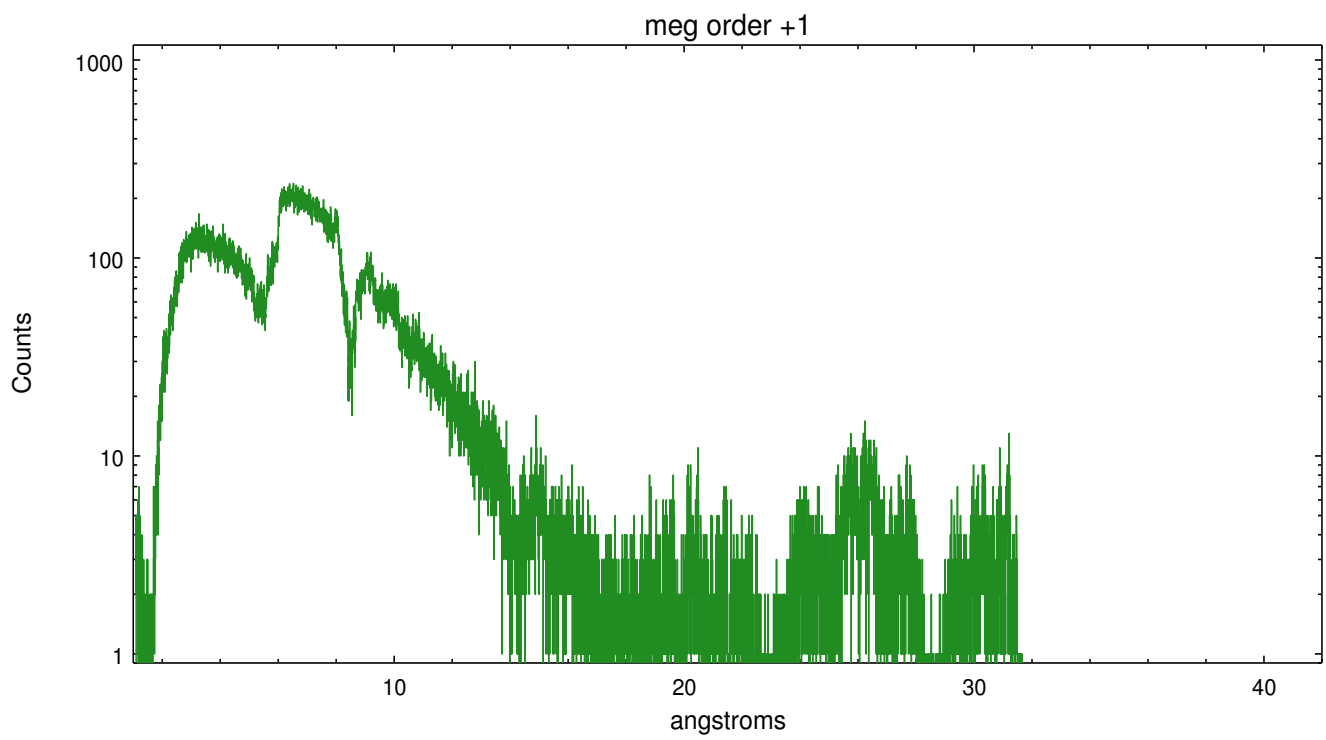
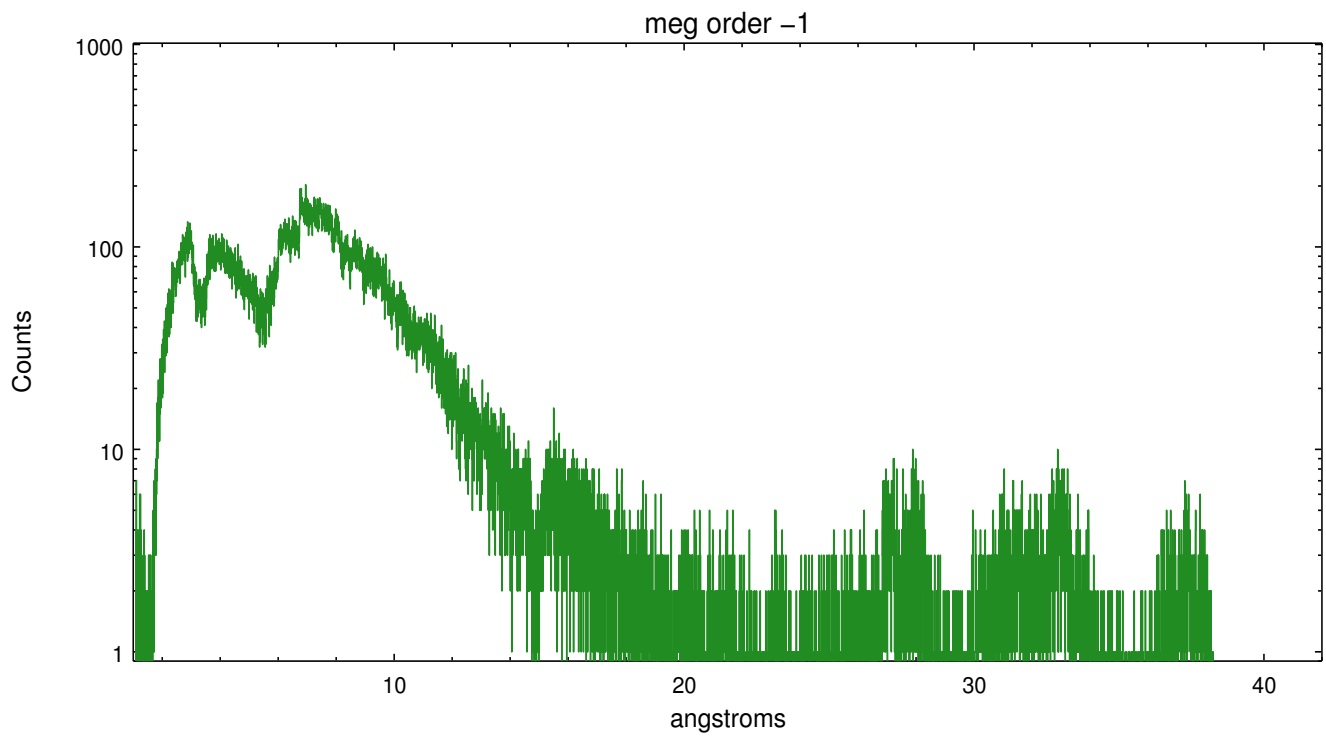
Spot Image MEG



Full Detector MEG

	order -3	order -2	order -1	order 0	order 1	order 2	order 3
Events	20325	0	171093	554806	201377	0	17425





A Summary

A.1 Status

V&V Scientist	David Huenemoerder
V&V Date (YYYY-MM-DD)	2012.10.15
V&V Edition	1
V&V Disposition and Status	OK
V&V Charge Time	40.965

A.2 Comments