

V&V Reference Report

L2 ASCDS Version : 8.4.5

Observation 2762 - L2 Version 4
Chandra X-Ray Center

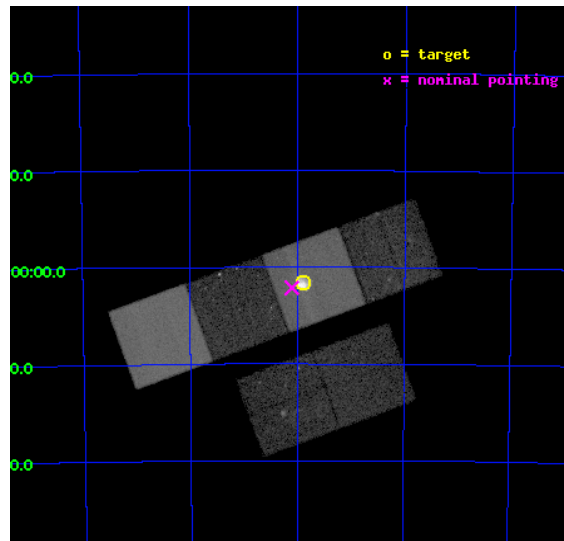
L2 Processing Date : Oct 19 2012

Contents

1	Front	2
2	OBI	3
2.1	OBI	3
2.1.1	Images	3
2.1.2	Bias	3
2.1.3	Parameters	4
2.1.4	Events	4
2.2	Compared Parameters	5
2.3	Aspect	6
2.4	Star Slots	9
2.4.1	Slot 3	9
2.4.2	Slot 4	10
2.4.3	Slot 5	11
2.4.4	Slot 6	12
2.4.5	Slot 7	13
2.5	FID Slots	14
2.5.1	Slot 0	14
2.5.2	Slot 1	15
2.5.3	Slot 2	16
A	Summary	17
A.1	Status	17
A.2	Comments	17

1 Front

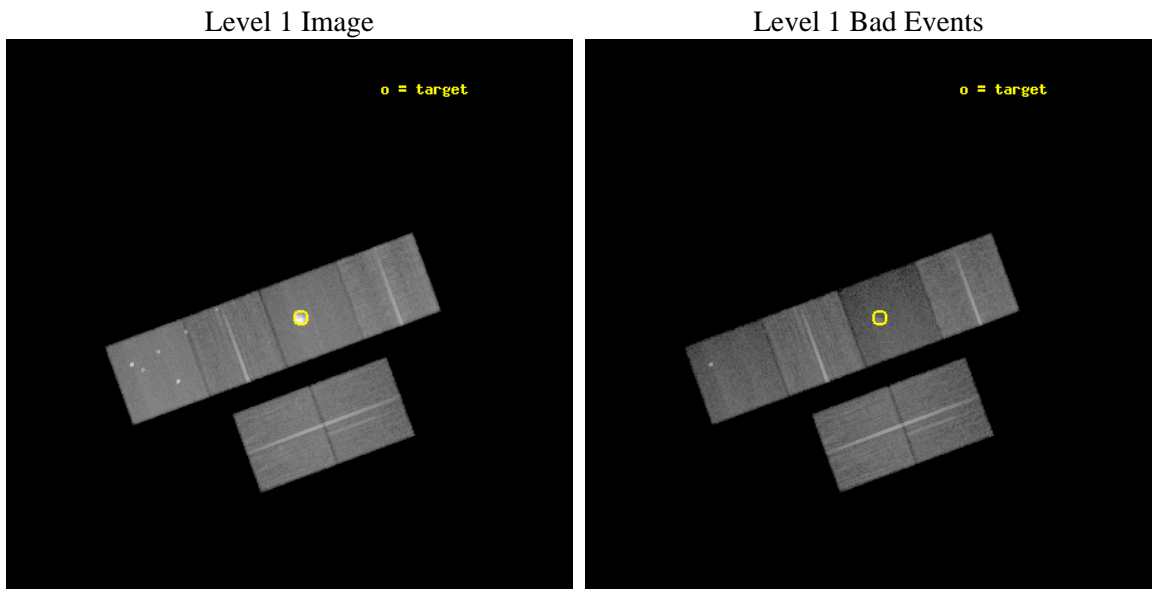
seq_num	500212	Sequence number
obs_id	2762	Observation id
title	SNR 0506-68.0: A REMNANT TRANSITIONING FROM THE EJECTA-DOMINATED TO THE SEDOV PHASE OF EVOLUTION	Proposal title
observer	Prof. John Hughes	Principal investigator
object	0506-68.0	Source name
dtcycle	0	
cycle	P	events from which exps? Prim/Second/Both
ra_targ	76.475	Observer's specified target RA [deg]
dec_targ	-68.026944	Observer's specified target Dec [deg]
ra_nom	76.525222945794	Nominal RA [deg]
dec_nom	-68.035699356384	Nominal Dec [deg]
roll_nom	339.80526798447	Nominal Roll [deg]
revision	4	Processing version of data
ontime	37763.199859321	Sum of GTIs [s]
livetime	37285.019484433	Livetime [s]
ontime2	37753.476998448	Sum of GTIs [s]
ontime3	37753.476948619	Sum of GTIs [s]
ontime5	37763.199859321	Sum of GTIs [s]
ontime6	37763.199859321	Sum of GTIs [s]
ontime7	37763.199859321	Sum of GTIs [s]
ontime8	37763.199859321	Sum of GTIs [s]
l2events	392223	Number of level 2 events



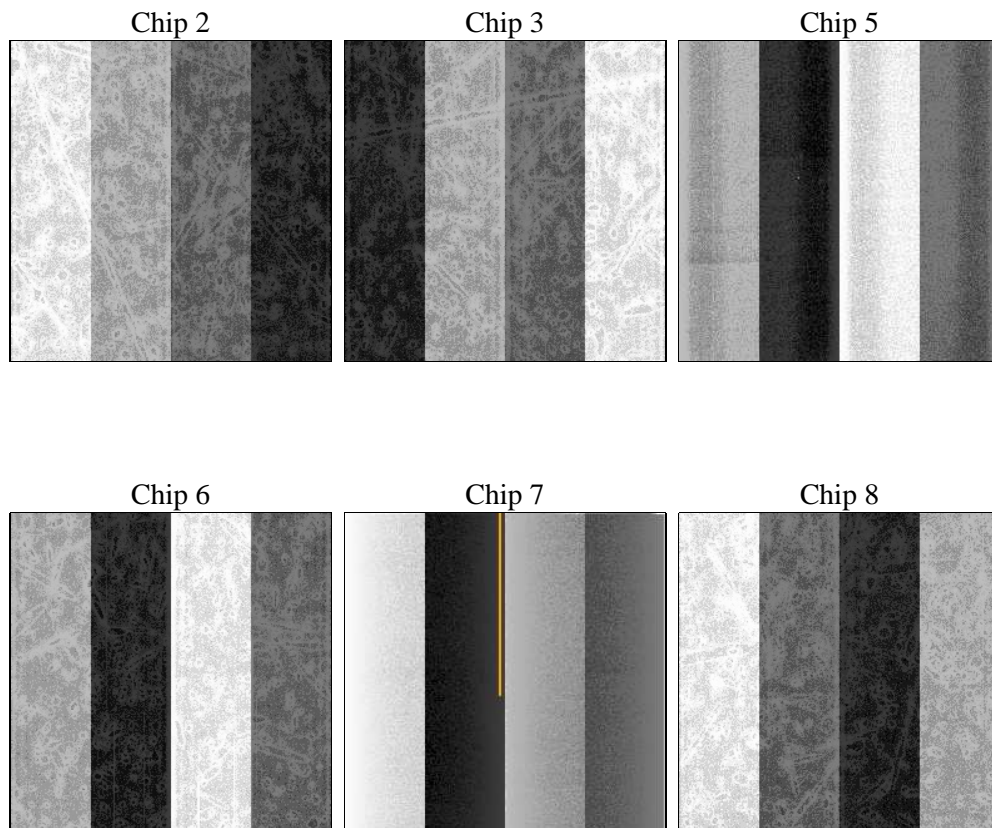
2 OBI

2.1 OBI

2.1.1 Images



2.1.2 Bias



2.1.3 Parameters

obi_num	1	Obi number	sched_exp_time	37804.276000	[s] Scheduled observation exposure time
ascdsver	8.4.5	Processing system revision	ontime	37763.199859321	Sum of GTIs [s]
caldbver	4.5.2	 	ontime2	37753.476998448	Sum of GTIs [s]
date	2012-10-19T14:42:09	Date and time of file creation	ontime3	37753.476948619	Sum of GTIs [s]
revision	4	Processing version of data	ontime5	37763.199859321	Sum of GTIs [s]
			ontime6	37763.199859321	Sum of GTIs [s]
			ontime7	37763.199859321	Sum of GTIs [s]
			ontime8	37763.199859321	Sum of GTIs [s]
			l1events	1340431	Number of level 1 events

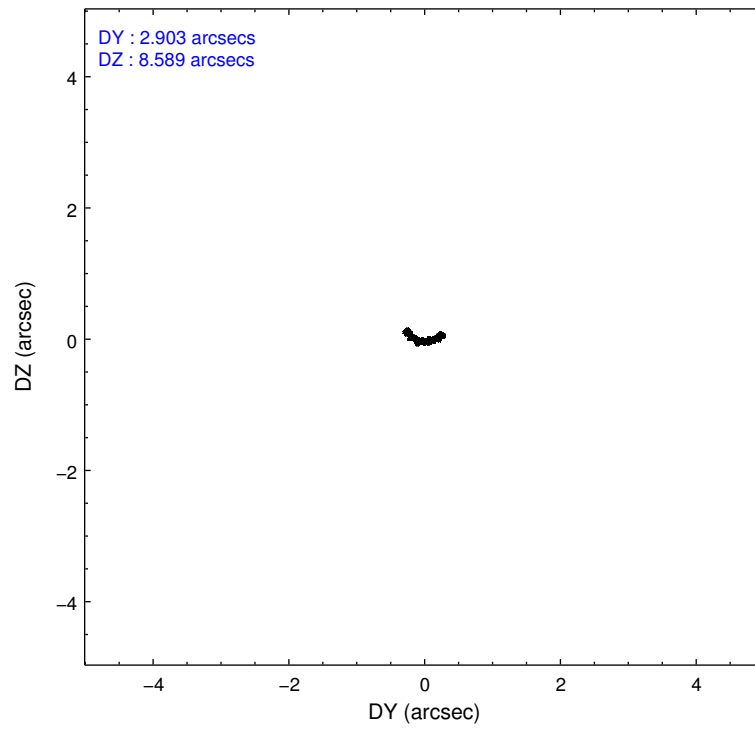
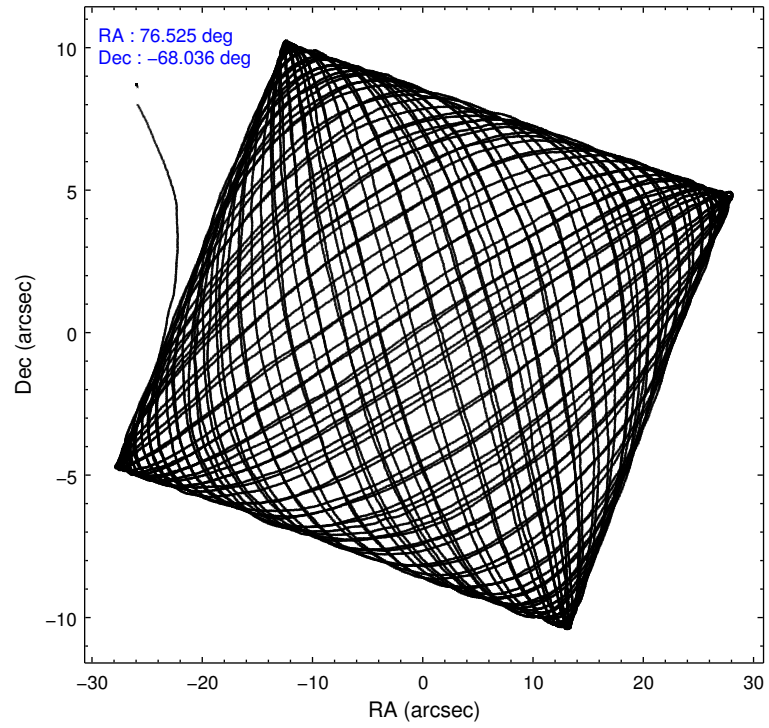
2.1.4 Events

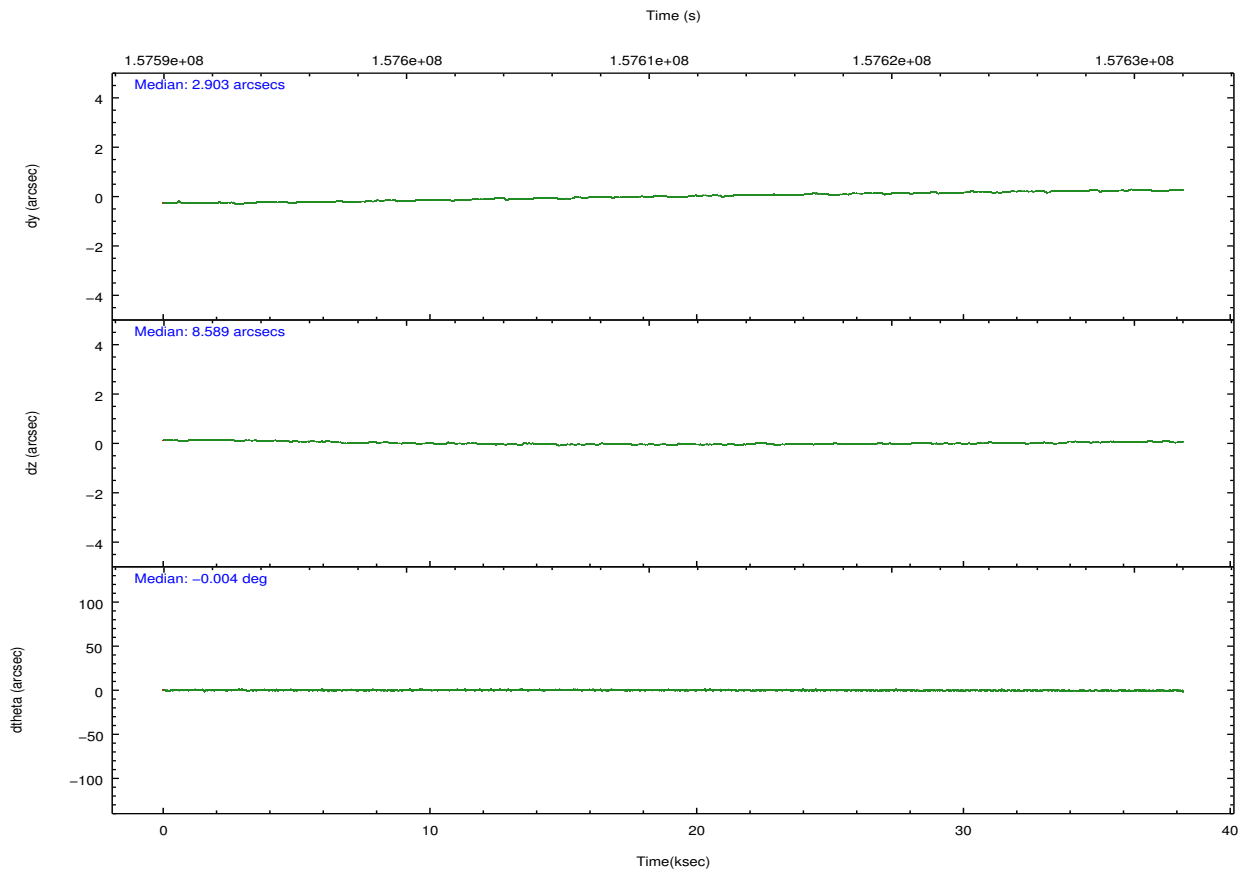
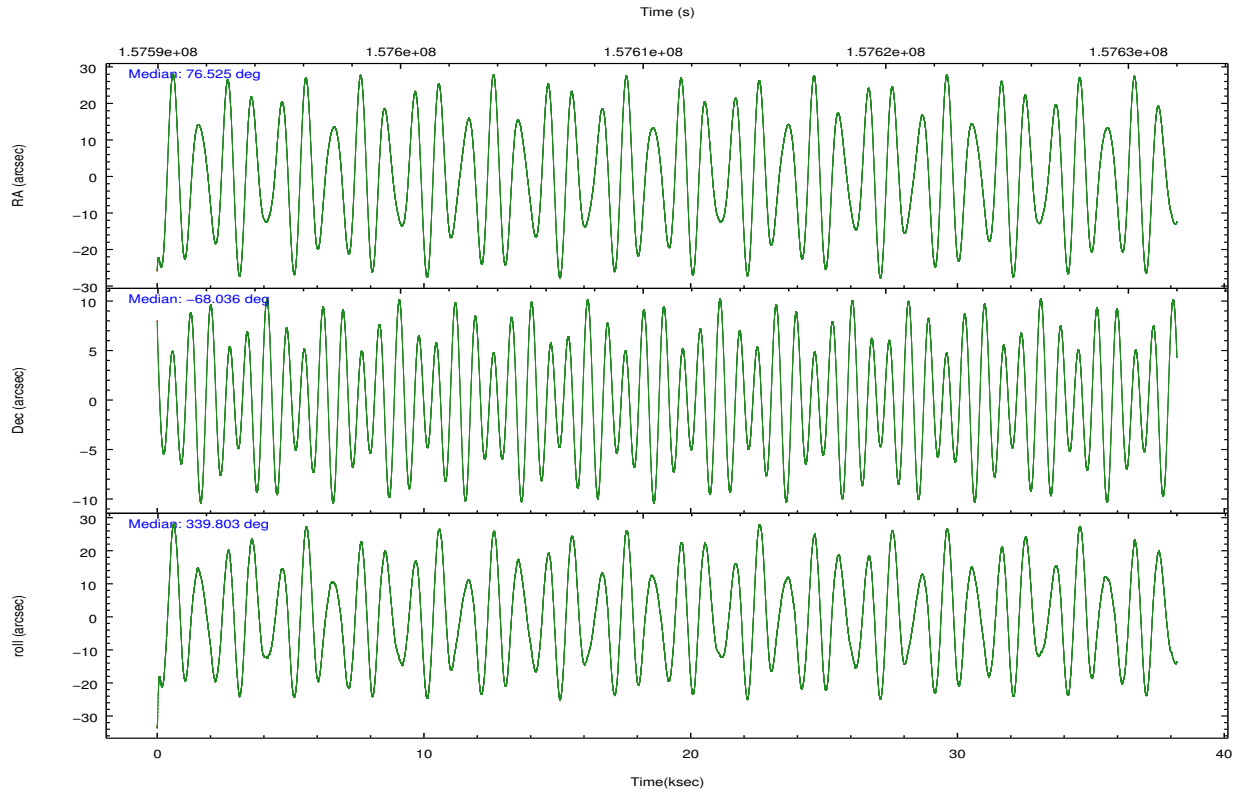
	ccd 2	ccd 3	ccd 5	ccd 6	ccd 7	ccd 8		ccd 2	ccd 3	ccd 5	ccd 6	ccd 7	ccd 8
level 1 events	206886	178808	238183	186976	301694	227884	grade 0 events	7714	6460	24472	8567	56252	14315
rejected events	187717	161743	104736	166322	88711	177667		3%	3%	10%	4%	18%	6%
rejected %	90%	90%	43%	88%	29%	77%	grade 1 events	109	103	1914	77	379	176
								0%	0%	0%	0%	0%	0%
							grade 2 events	4216	3488	36527	4107	51354	11385
								2%	1%	15%	2%	17%	4%
							grade 3 events	2072	2041	6494	2167	23402	5695
								1%	1%	2%	1%	7%	2%
							grade 4 events	2080	2008	6158	2106	23309	5210
								1%	1%	2%	1%	7%	2%
							grade 5 events	5282	5882	18680	6073	19741	9067
								2%	3%	7%	3%	6%	3%
							grade 6 events	3089	3074	59815	3711	58700	13617
								1%	1%	25%	1%	19%	5%
							grade 7 events	182324	155752	84123	160168	68557	168419
								88%	87%	35%	85%	22%	73%

2.2 Compared Parameters

Parameter	Planned	Actual	Parameter	Planned	Actual
Instrument	ACIS	ACIS	Obspar format version number	7	7
Detector	ACIS-235678	ACIS-235678	Obspar file type	PREDICTED	ACTUAL
Grating	NONE	NONE	Obspar update status	NONE	UPDATED
Data mode	VFAINT	VFAINT	Number of optional ACIS chips dropped	0	0
Observation mode	POINTING	POINTING	On-chip summing requested	N	N
[deg] Pointing RA	76.453709	76.5252229457942	Subarray requested	NONE	NONE
[deg] Pointing Dec	-68.040689	-68.0356993563844	Alternating exposures requested	N	N
[deg] Pointing Roll	339.582321	339.8052679844689	[s] Primary exposure time	0.000000	3.2
[mm] SIM focus pos	-0.684267	-0.6828225247311905			
[mm] SIM defocus	0	0.001444936568705701			
[mm] SIM translation stage pos	-190.132523	-190.1425803651734			
[mm] SIM translation stage offset	0	0.01005778216563158			
[s] Observation start time (MET)	157592295.184000	157591217.38496			
Observation start date	2002-12-29T23:37:11	2002-12-29T23:20:17			
[s] Observation end time (MET)	157630099.184000	157630413.8991			
Observation end date	2002-12-30T10:07:15	2002-12-30T10:13:33			
Read mode	TIMED	TIMED			

2.3 Aspect





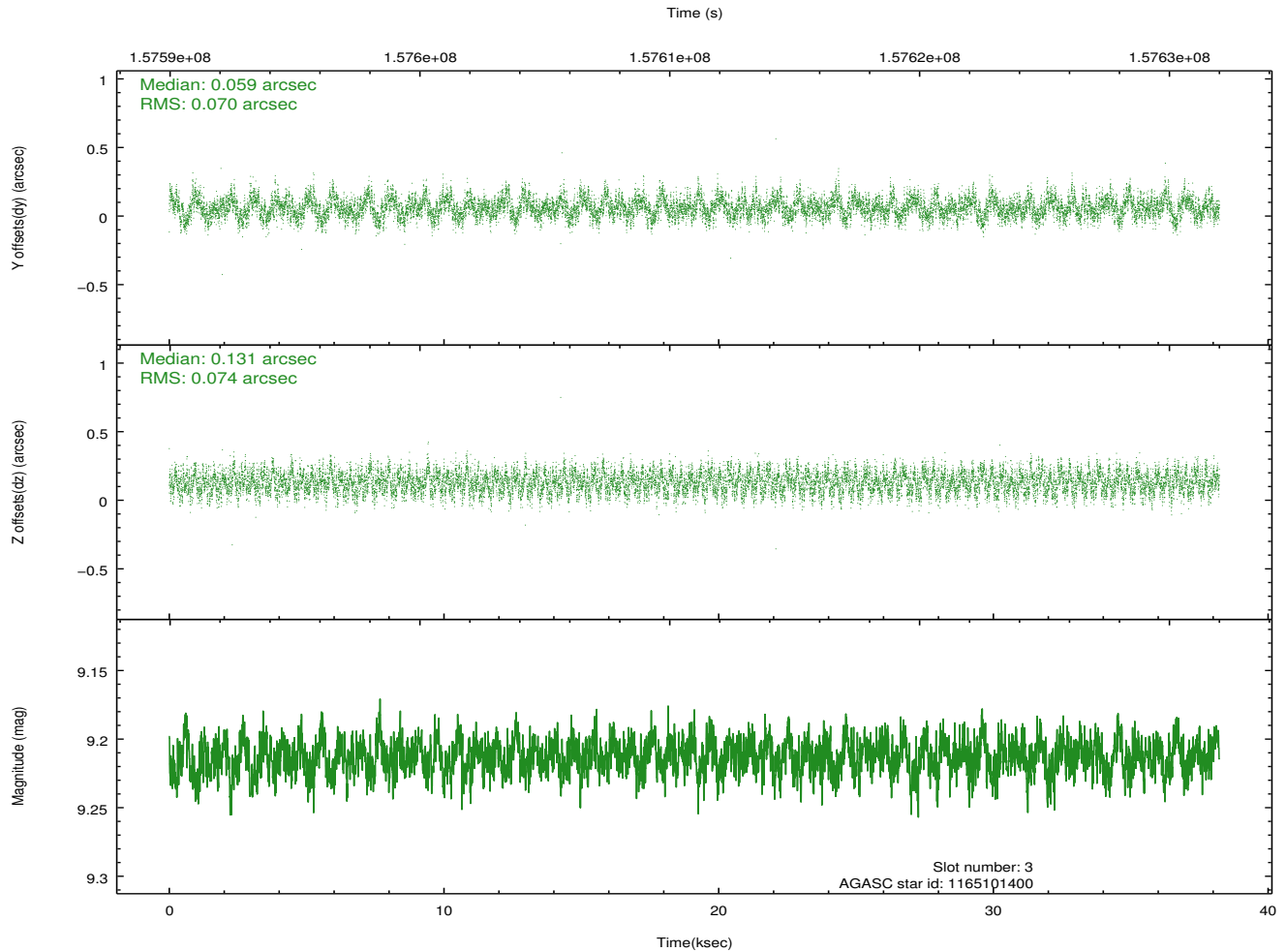
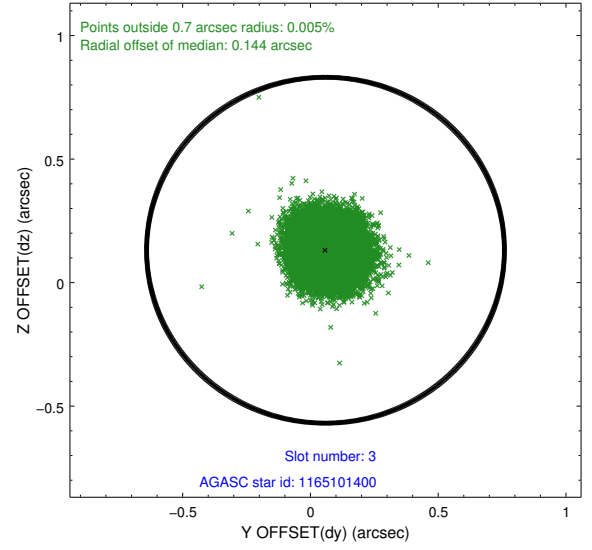
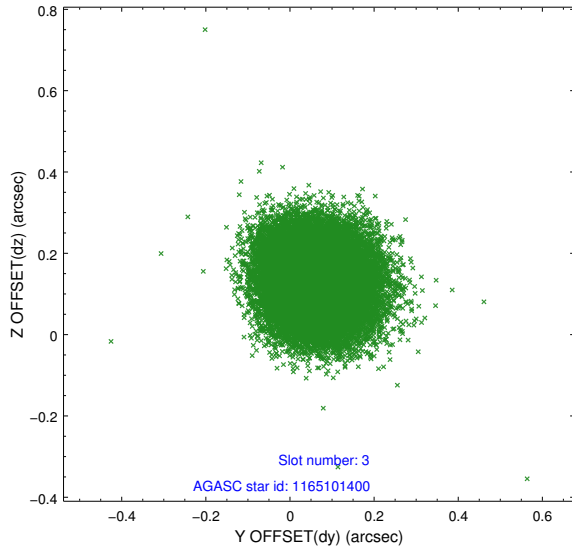
Slot Statistics

slot	status	id	mag	n_pts	med_dy	med_dz	dr1	dr2	ra	dec	mean_y	mean_z
0	FID	ACIS-S-2	7.11	9325	-0.018	-0.014	0.007	0.012	0.000000	0.000000	-755.56	-1729.77
1	FID	ACIS-S-4	7.20	9323	0.002	0.013	0.010	0.018	0.000000	0.000000	2157.73	178.70
2	FID	ACIS-S-5	7.24	9324	-0.015	0.010	0.010	0.018	0.000000	0.000000	-1808.37	172.41
3	GUIDE	1165101400	9.21	18641	0.059	0.131	0.110	0.170	75.332859	-67.447345	-2190.33	1449.22
4	GUIDE	1200757792	9.91	18639	-0.072	-0.016	0.159	0.260	77.665138	-68.247752	1780.37	-149.37
5	GUIDE	1200758584	8.19	18647	-0.057	-0.066	0.077	0.124	75.674293	-67.843121	-1237.13	291.23
6	GUIDE	1200758808	9.25	18639	0.197	0.026	0.225	0.309	75.766621	-68.511245	-255.72	-1908.17
7	GUIDE	1200882544	8.92	18636	-0.114	-0.071	0.075	0.118	78.099449	-67.947843	1978.40	1061.50

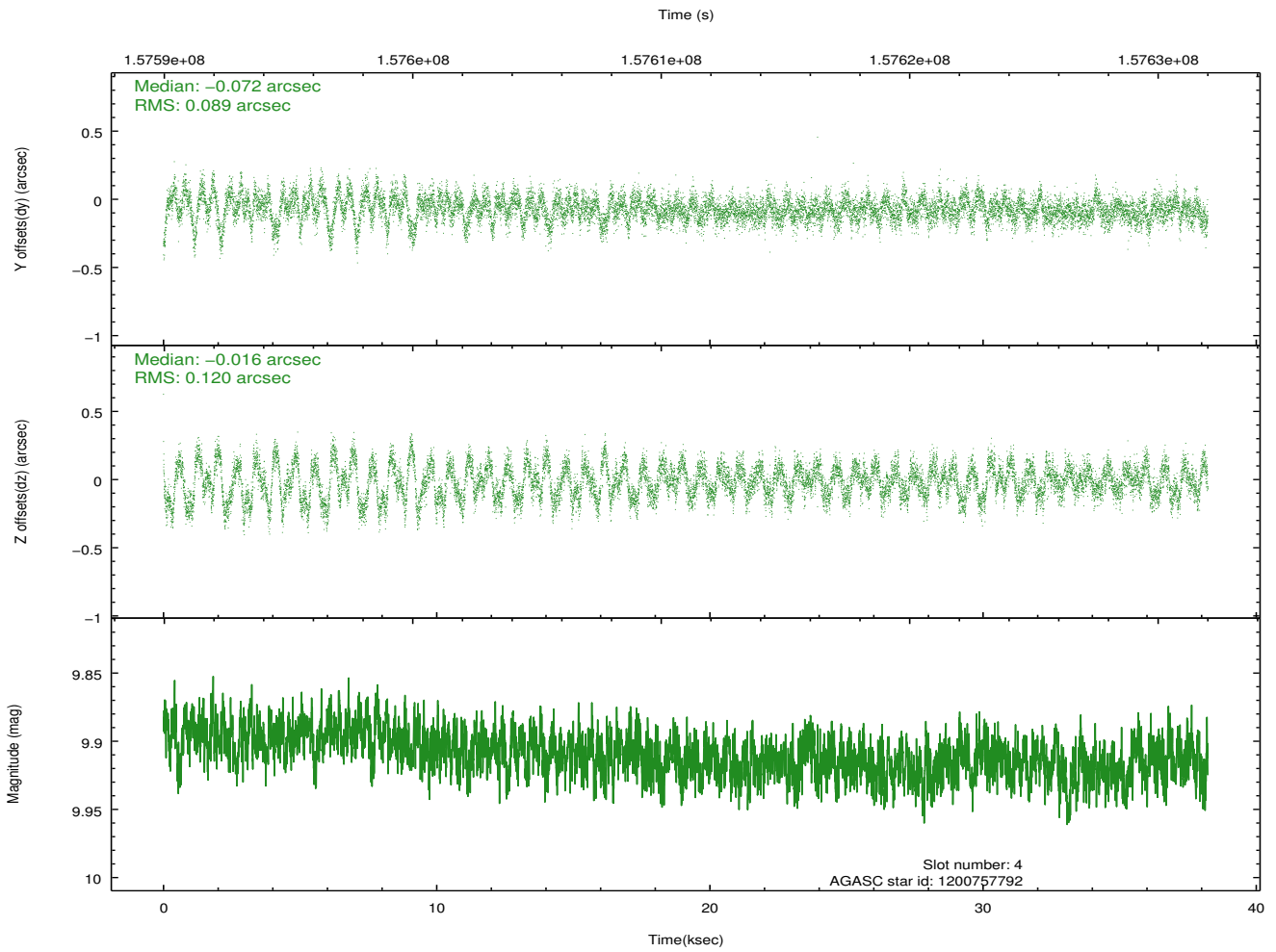
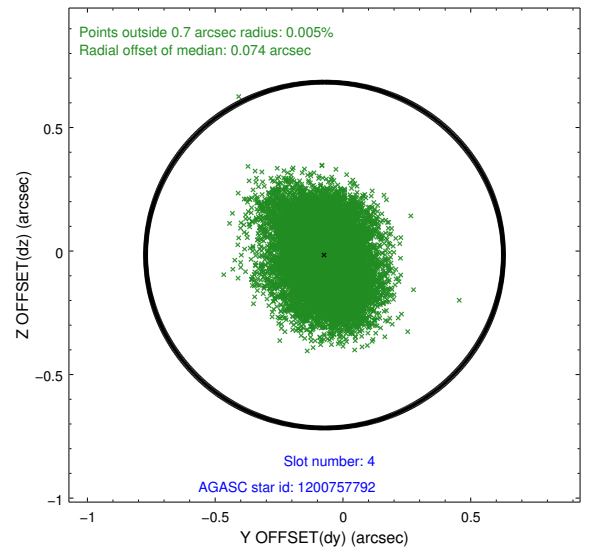
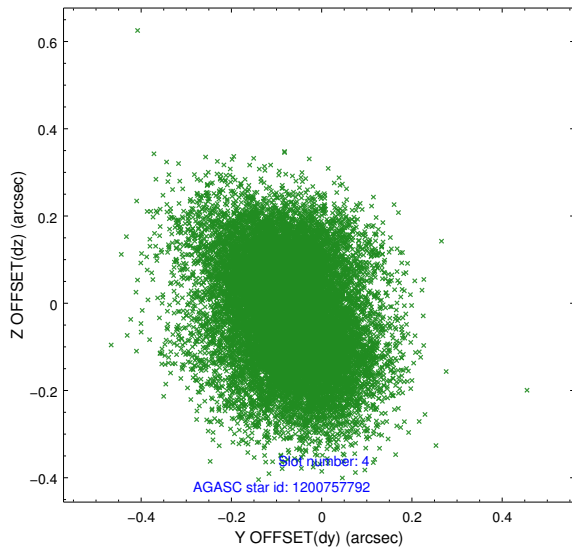
∞

2.4 Star Slots

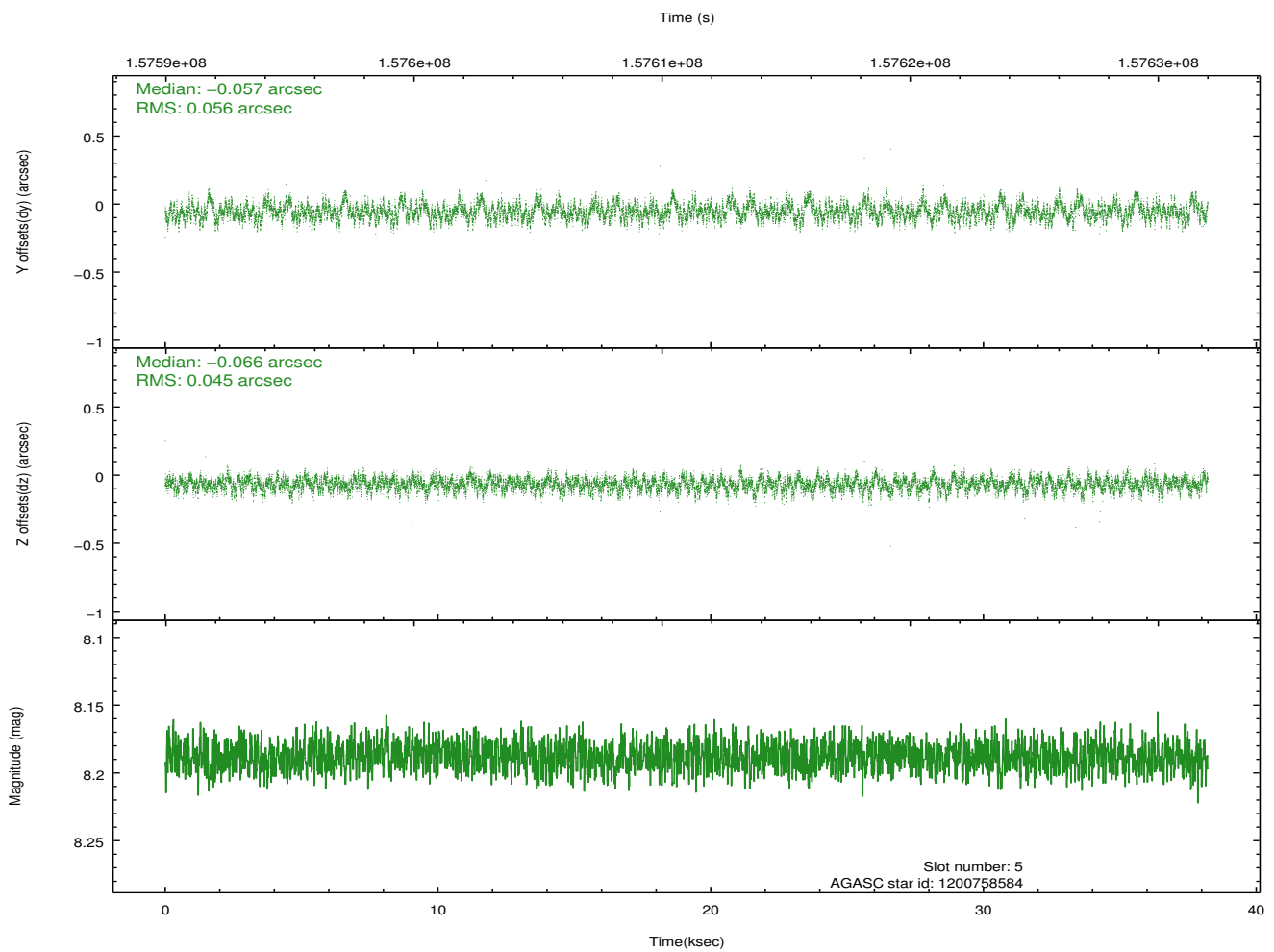
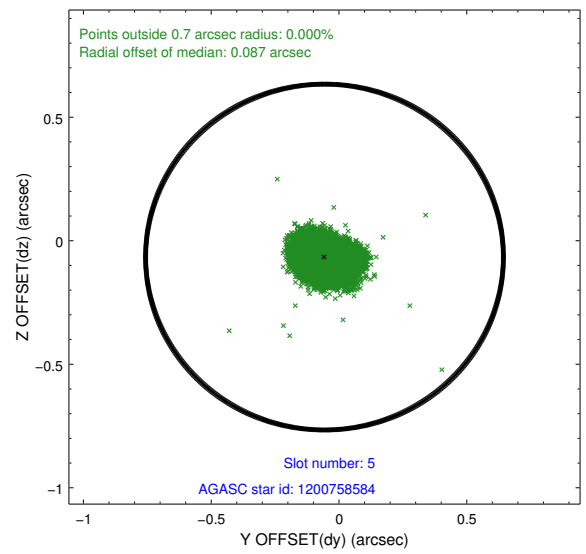
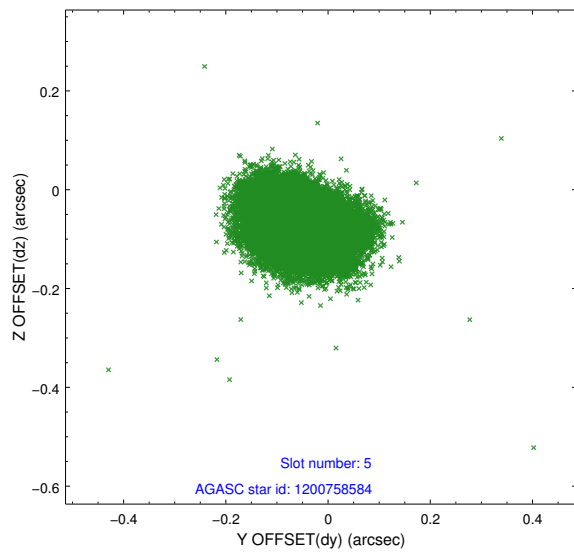
2.4.1 Slot 3



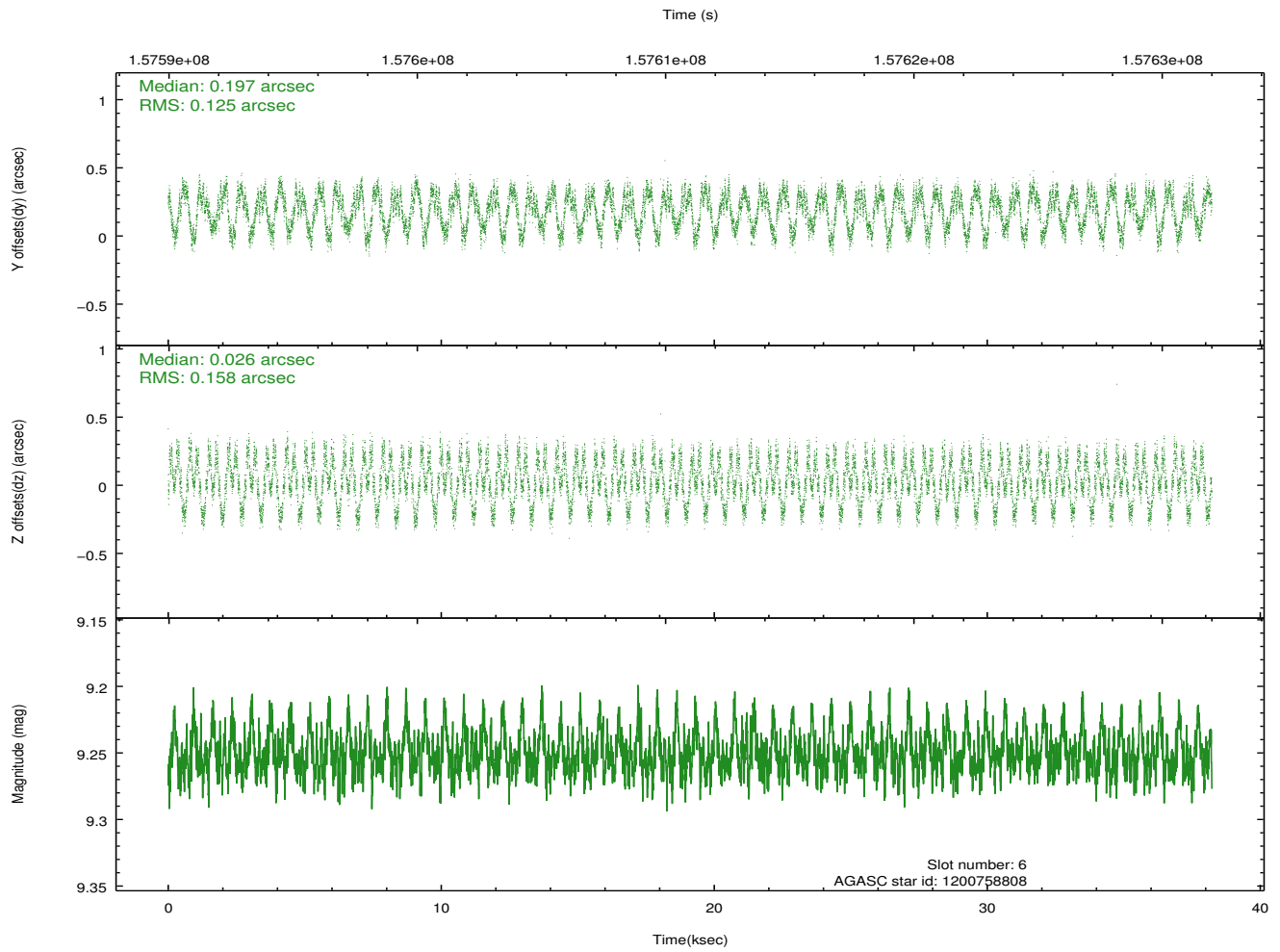
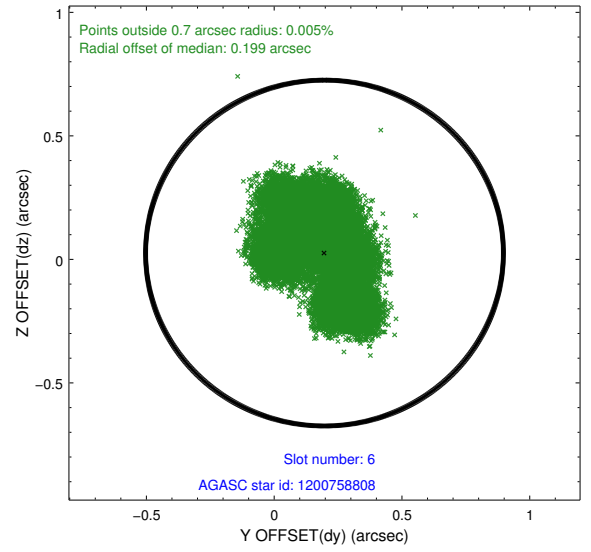
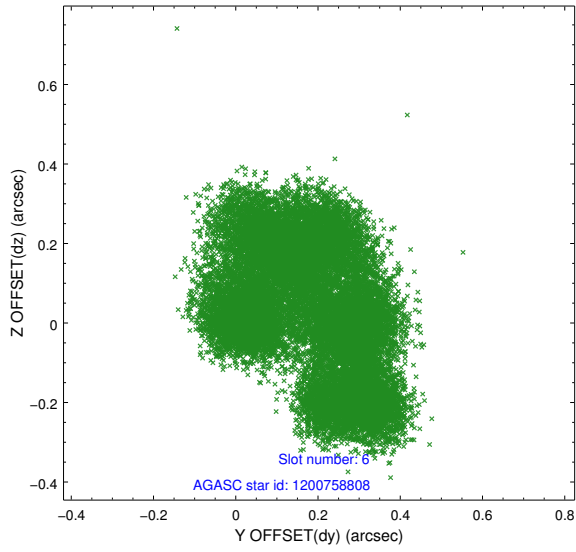
2.4.2 Slot 4



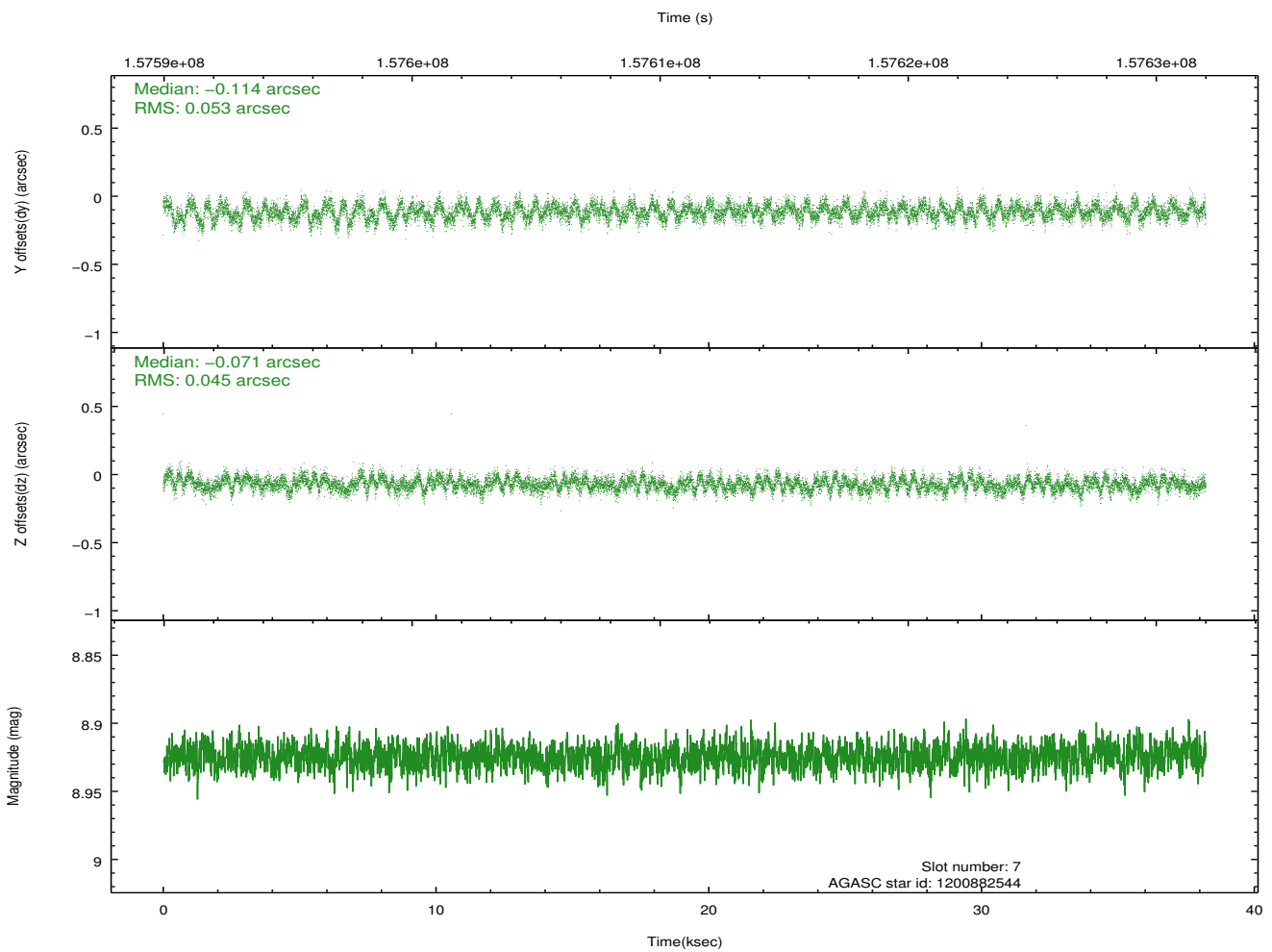
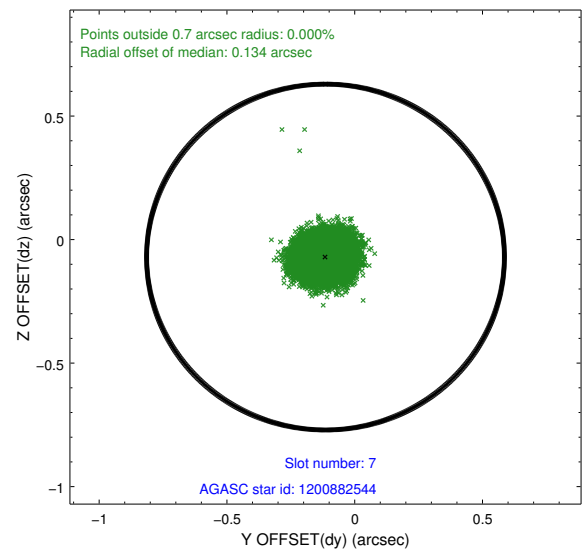
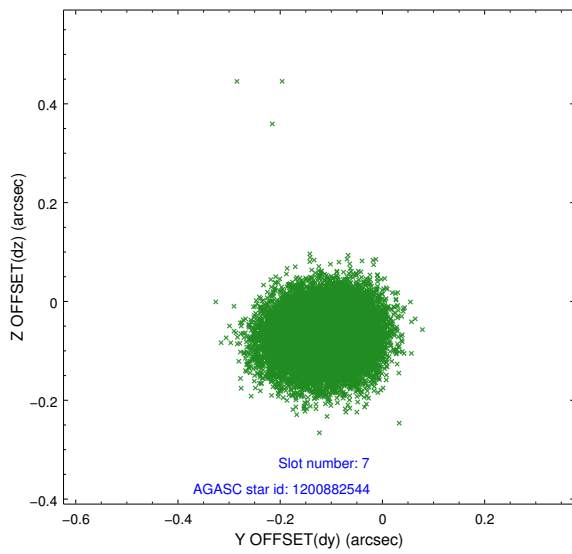
2.4.3 Slot 5



2.4.4 Slot 6

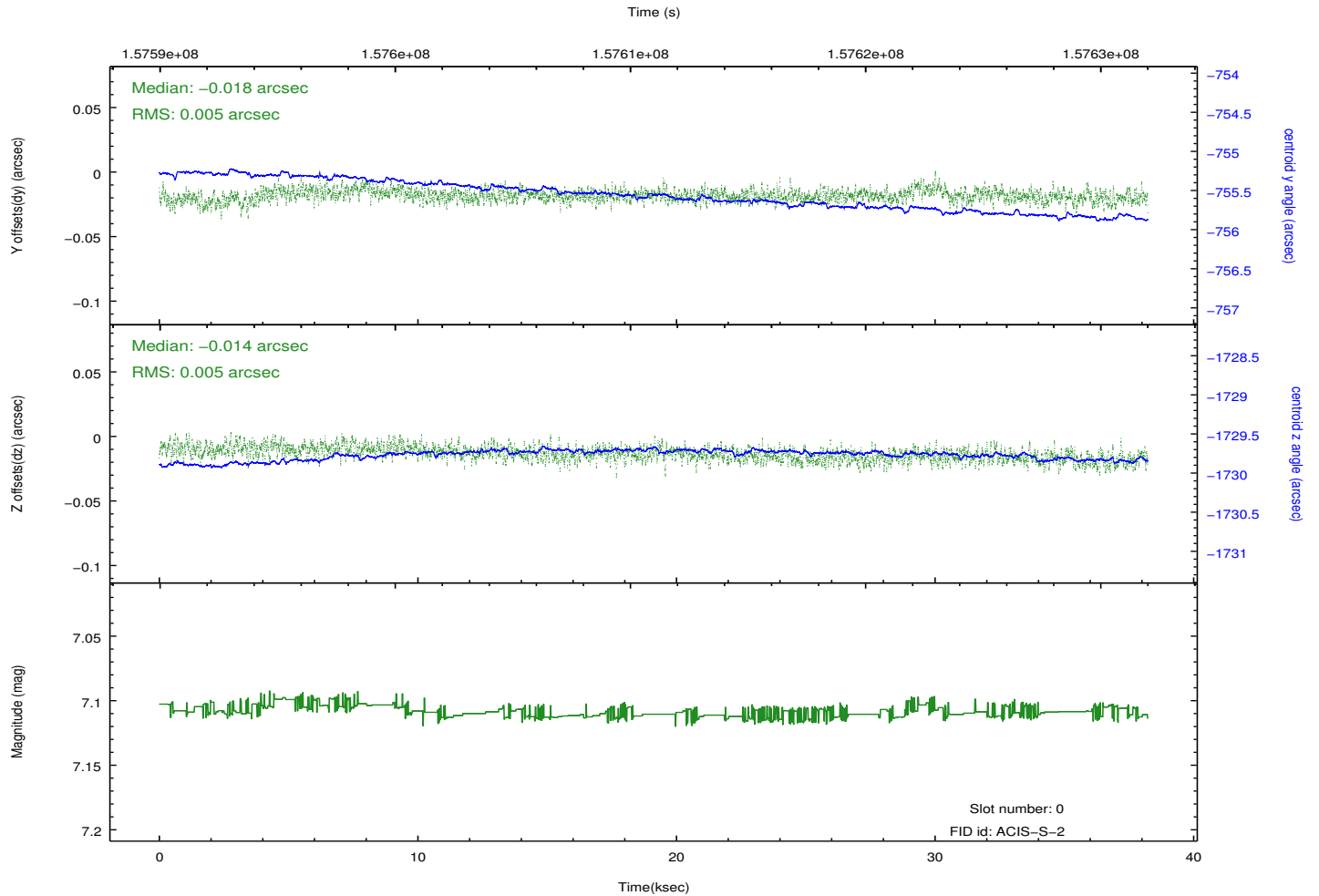
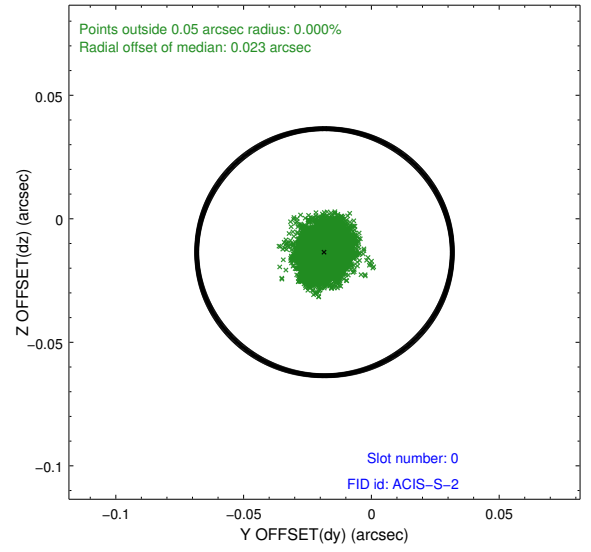
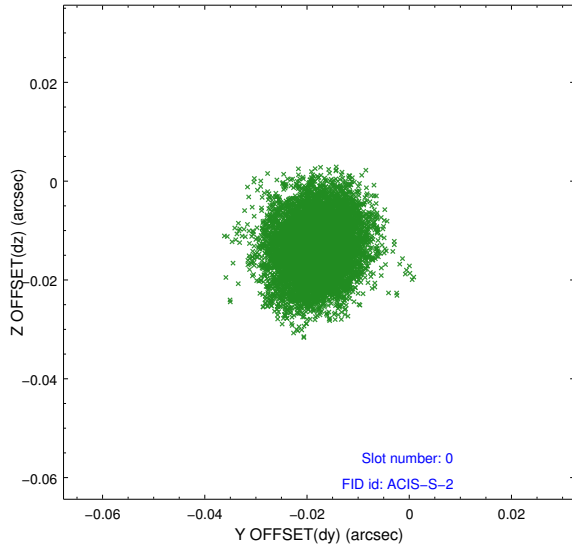


2.4.5 Slot 7

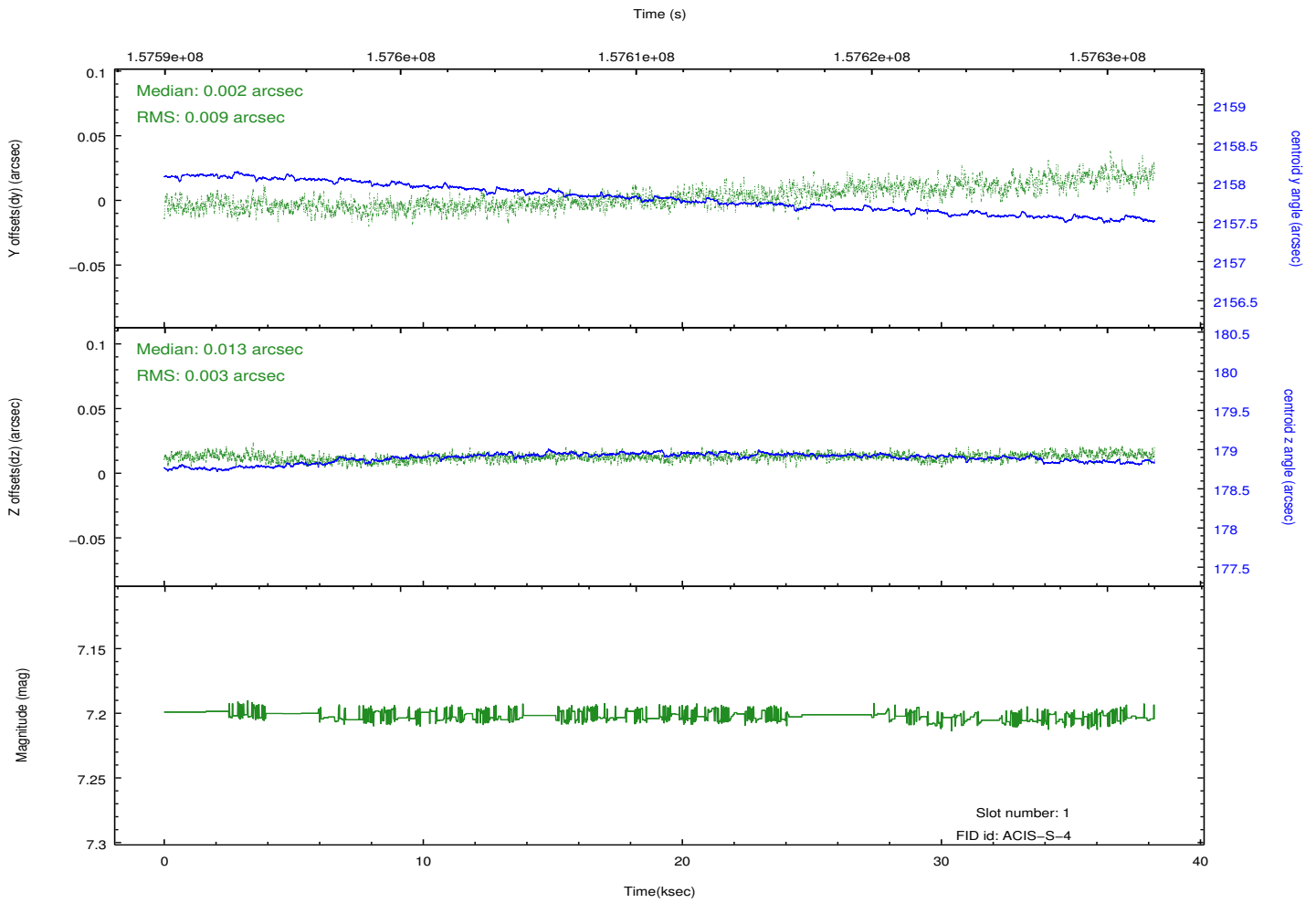
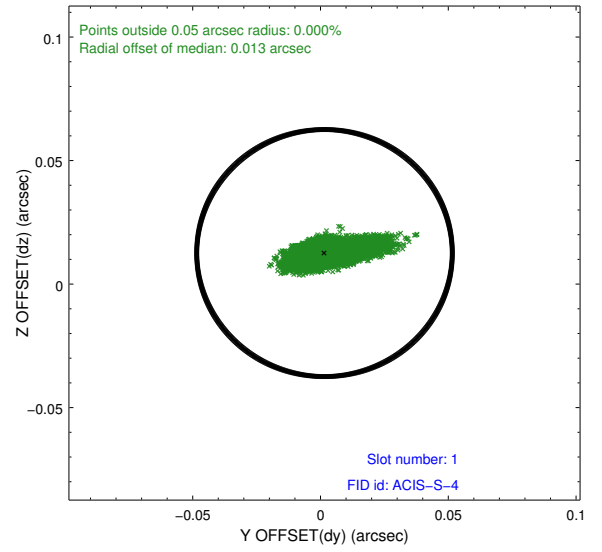
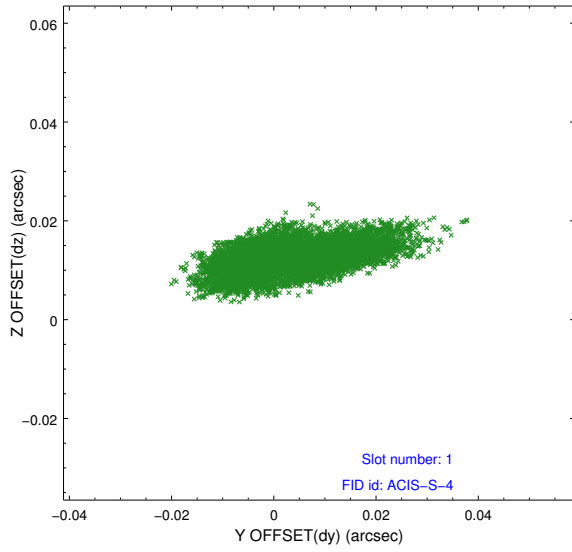


2.5 FID Slots

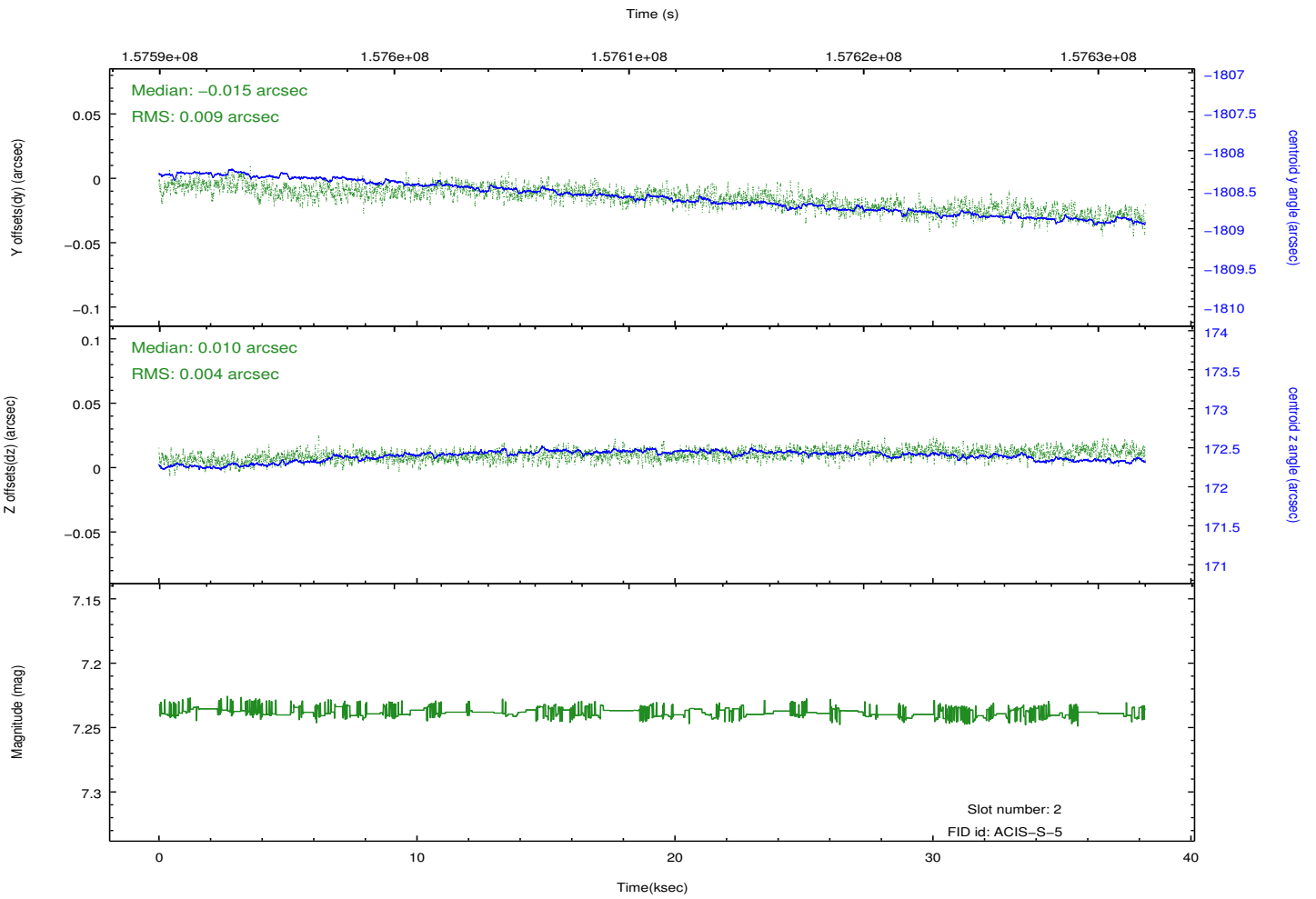
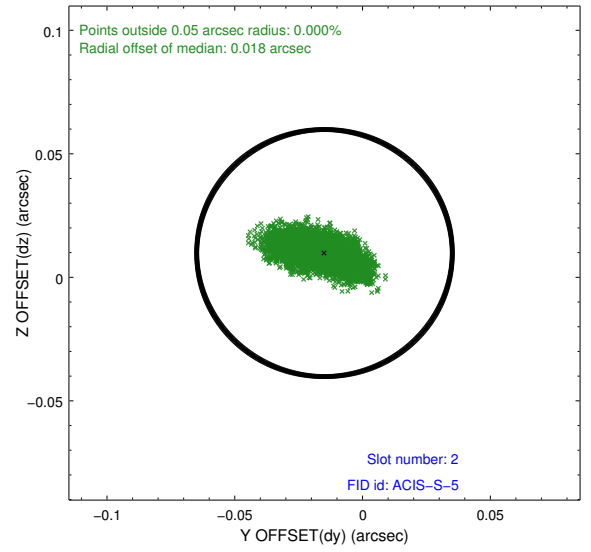
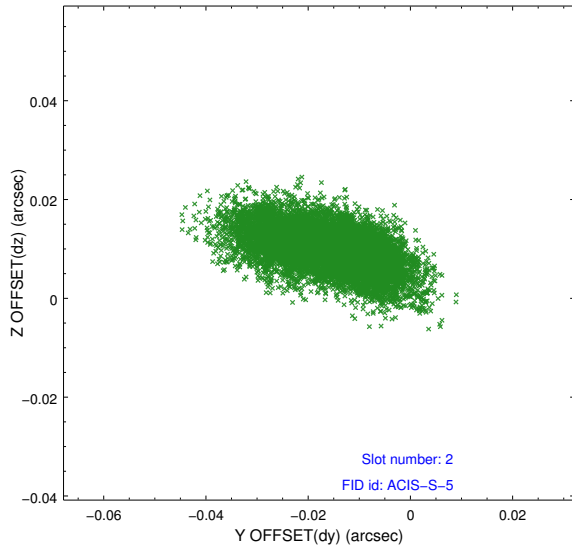
2.5.1 Slot 0



2.5.2 Slot 1



2.5.3 Slot 2



A Summary

A.1 Status

V&V Scientist	Jen Lauer
V&V Date (YYYY-MM-DD)	2012.10.31
V&V Edition	1
V&V Disposition and Status	OK
V&V Charge Time	37.766

A.2 Comments