

# V&V Reference Report

## L2 ASCDS Version : 8.4.5

Observation 2782 - L2 Version 3  
Chandra X-Ray Center

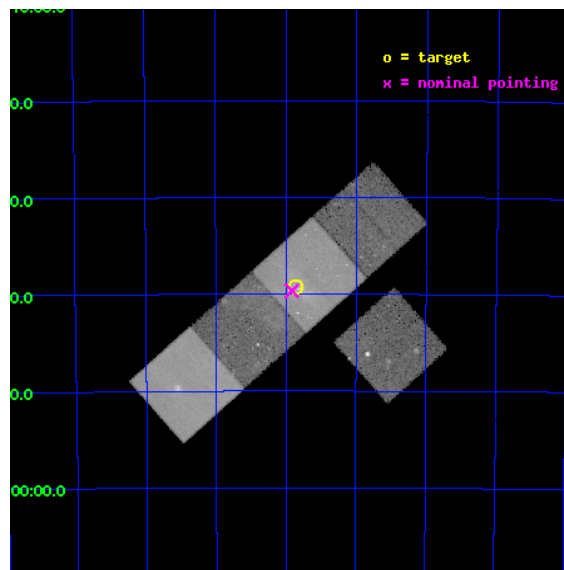
L2 Processing Date : Oct 4 2012

## Contents

<b>1</b>	<b>Front</b>	<b>2</b>
<b>2</b>	<b>OBI</b>	<b>3</b>
2.1	OBI . . . . .	3
2.1.1	Images . . . . .	3
2.1.2	Bias . . . . .	3
2.1.3	Parameters . . . . .	4
2.1.4	Events . . . . .	4
2.2	Compared Parameters . . . . .	5
2.3	Aspect . . . . .	6
2.4	Star Slots . . . . .	9
2.4.1	Slot 3 . . . . .	9
2.4.2	Slot 4 . . . . .	10
2.4.3	Slot 5 . . . . .	11
2.4.4	Slot 6 . . . . .	12
2.4.5	Slot 7 . . . . .	13
2.5	FID Slots . . . . .	14
2.5.1	Slot 0 . . . . .	14
2.5.2	Slot 1 . . . . .	15
2.5.3	Slot 2 . . . . .	16
<b>A</b>	<b>Summary</b>	<b>17</b>
A.1	Status . . . . .	17
A.2	Comments . . . . .	17

# 1 Front

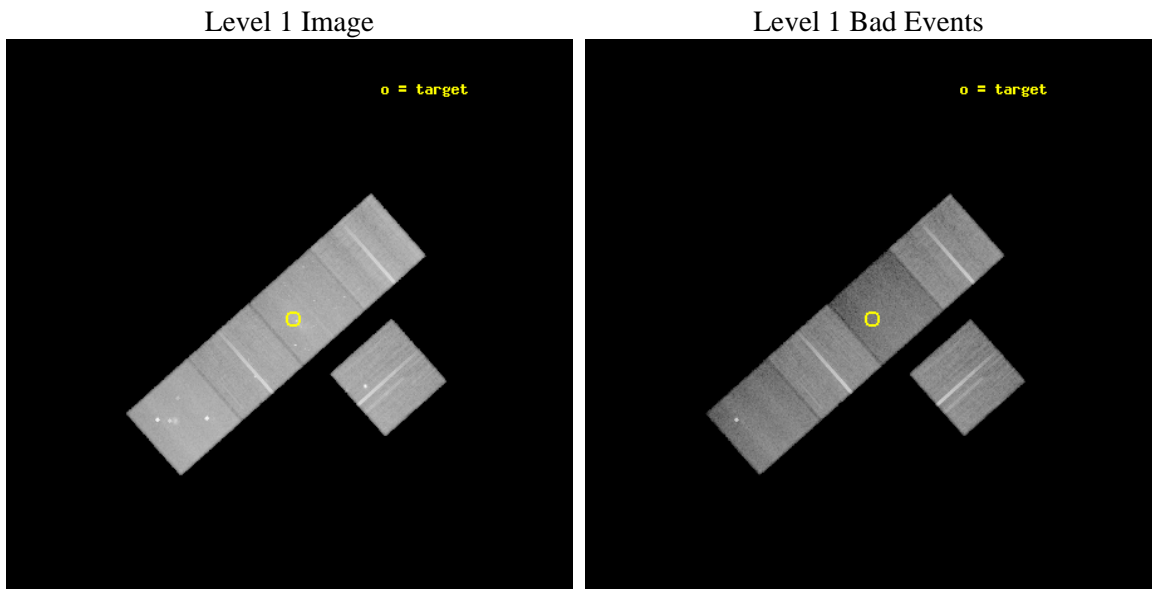
seq_num	500232	Sequence number
obs_id	2782	Observation id
title	THE MYSTERY OF COMPOSITE SUPERNOVA REMNANTS: THE CASE OF MSH 11-62	&#160
observer	Dr Ilana Harrus	Principal investigator
object	MSH 11-62	Source name
dtcycle	0	&#160
cycle	P	events from which exps? Prim/Second/Both
ra_targ	167.966667	Observer's specified target RA [deg]
dec_targ	-60.653333	Observer's specified target Dec [deg]
ra_nom	167.97892092807	Nominal RA [deg]
dec_nom	-60.66096311811	Nominal Dec [deg]
roll_nom	318.34730321412	Nominal Roll [deg]
revision	3	Processing version of data
ontime	50142.458943337	Sum of GTIs [s]
livetime	49487.310802901	Livetime [s]
ontime3	50136.17701292	Sum of GTIs [s]
ontime5	50145.599903554	Sum of GTIs [s]
ontime6	50145.599903554	Sum of GTIs [s]
ontime7	50142.458943337	Sum of GTIs [s]
ontime8	50145.599903554	Sum of GTIs [s]
l2events	396758	Number of level 2 events



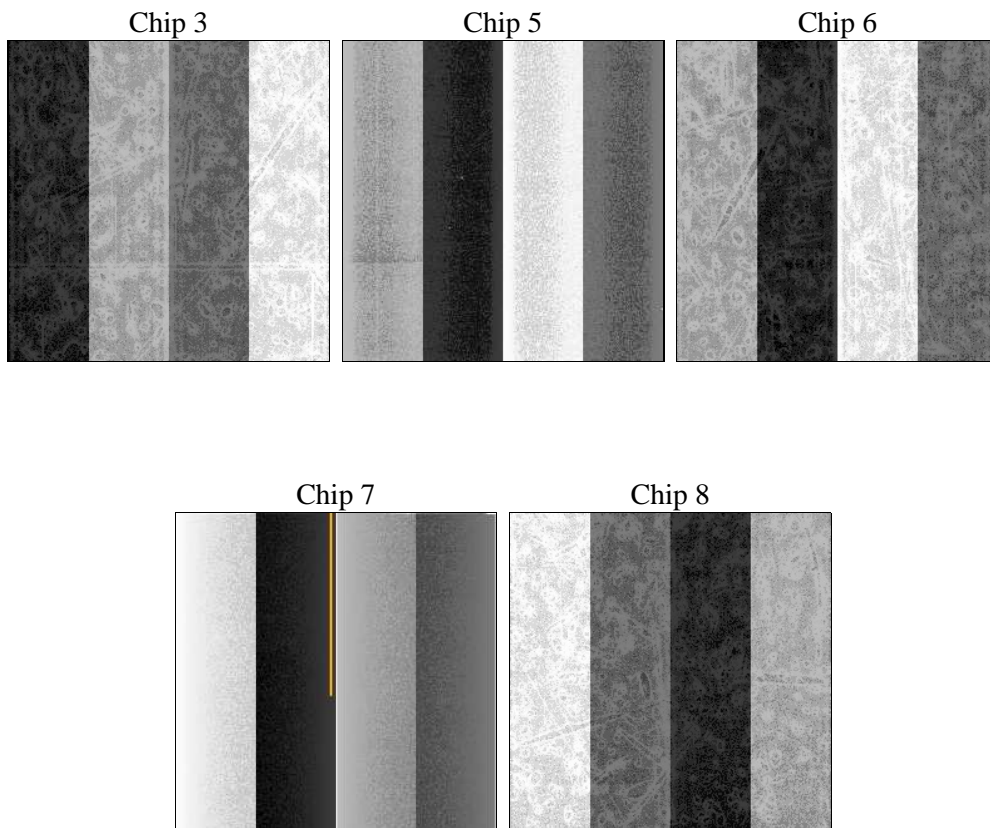
## 2 OBI

### 2.1 OBI

#### 2.1.1 Images



#### 2.1.2 Bias



### 2.1.3 Parameters

obi_num	1	Obi number	sched_exp_time	50000.000000	[s] Scheduled observation exposure time
ascdsver	8.4.5	Processing system revision	ontime	50142.458943337	Sum of GTIs [s]
caldbver	4.5.2	&#160	ontime3	50136.17701292	Sum of GTIs [s]
date	2012-10-04T21:26:51	Date and time of file creation	ontime5	50145.599903554	Sum of GTIs [s]
revision	3	Processing version of data	ontime6	50145.599903554	Sum of GTIs [s]
			ontime7	50142.458943337	Sum of GTIs [s]
			ontime8	50145.599903554	Sum of GTIs [s]
			l1events	1475138	Number of level 1 events

### 2.1.4 Events

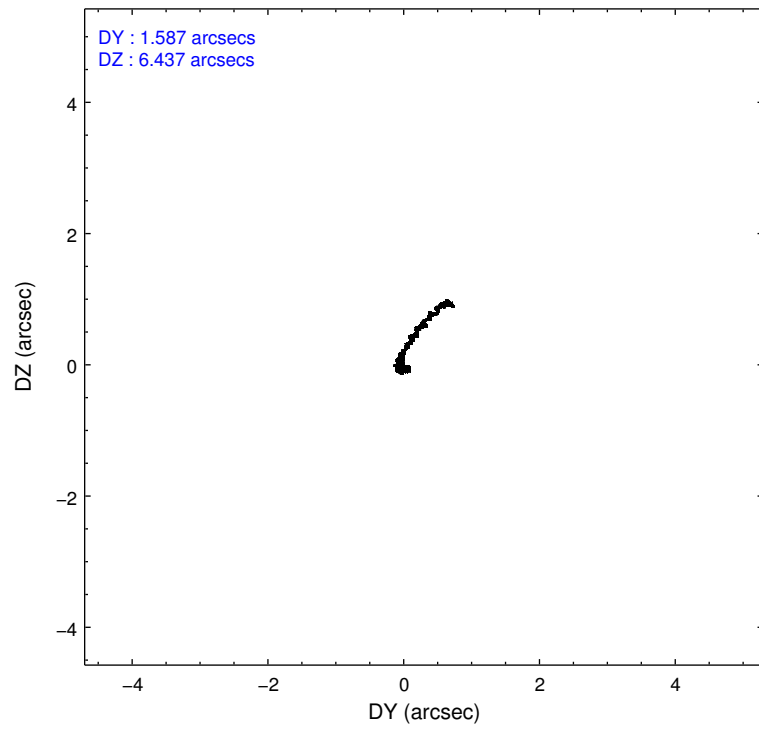
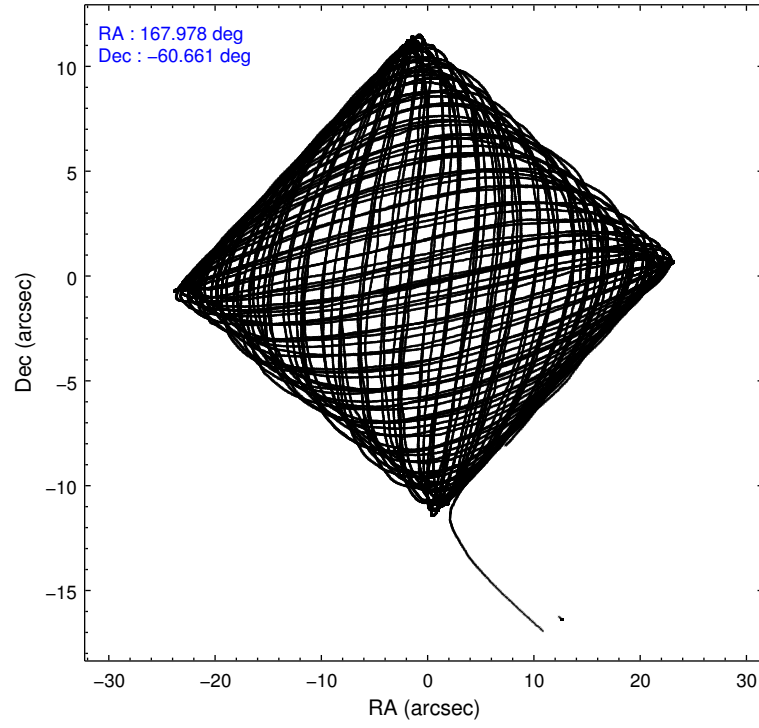
	ccd 3	ccd 5	ccd 6	ccd 7	ccd 8
level 1 events	271645	320175	282287	274384	326647
rejected events	240106	148551	242376	121654	251634
rejected %	88%	46%	85%	44%	77%

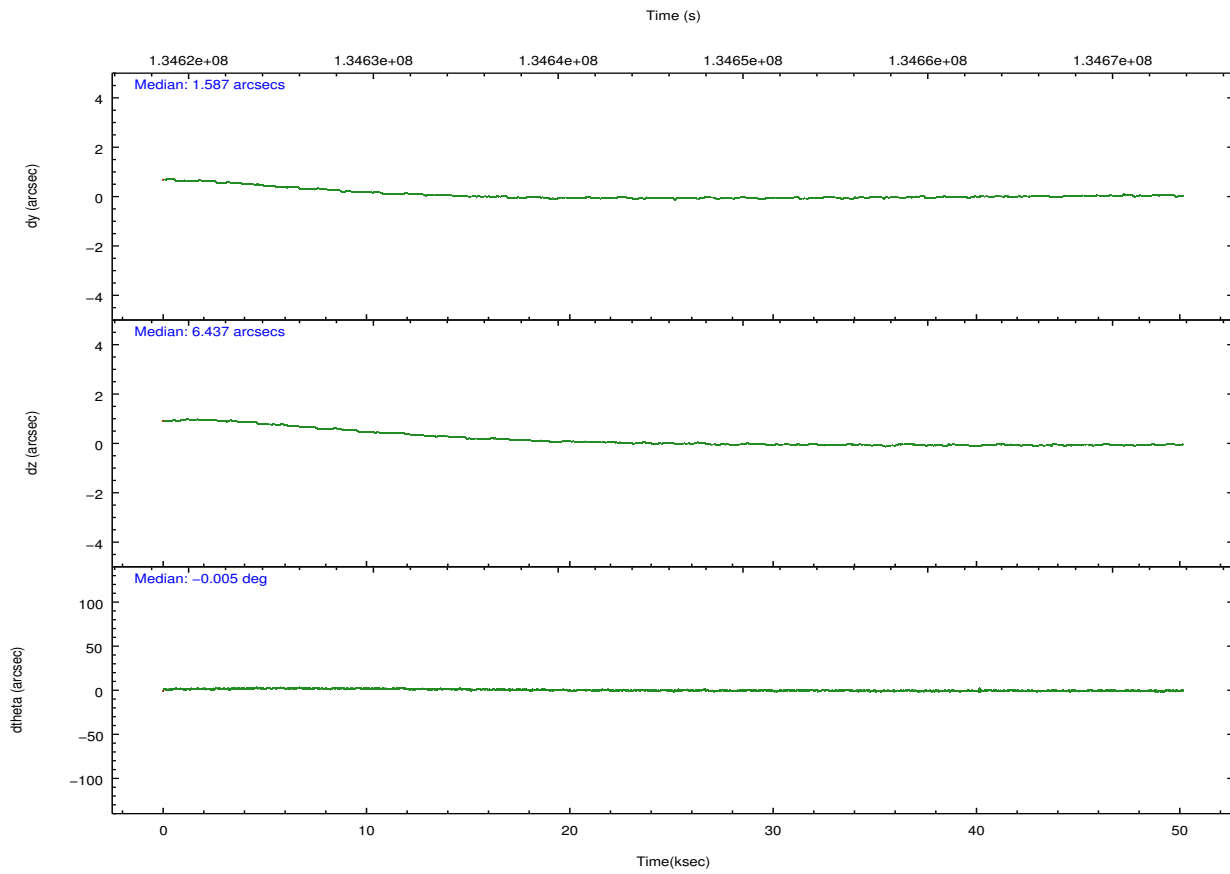
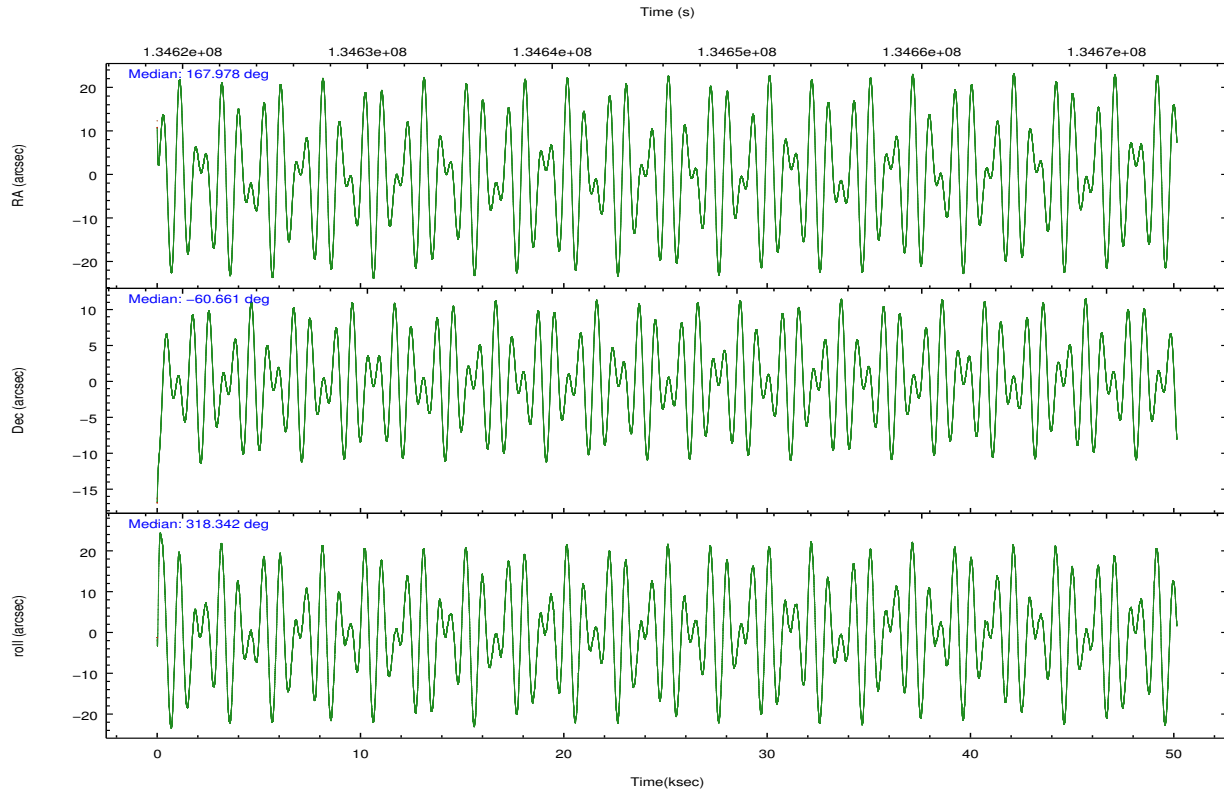
	ccd 3	ccd 5	ccd 6	ccd 7	ccd 8
grade 0 events	15729	22581	21471	21837	23524
	5%	7%	7%	7%	7%
grade 1 events	136	255	162	238	212
	0%	0%	0%	0%	0%
grade 2 events	5535	51702	6680	34311	16236
	2%	16%	2%	12%	4%
grade 3 events	2980	8677	3314	16036	8339
	1%	2%	1%	5%	2%
grade 4 events	2863	8084	3331	16183	7674
	1%	2%	1%	5%	2%
grade 5 events	7791	27020	8368	26043	12342
	2%	8%	2%	9%	3%
grade 6 events	4585	81406	5320	65128	19643
	1%	25%	1%	23%	6%
grade 7 events	232026	120450	233641	94608	238677
	85%	37%	82%	34%	73%

## 2.2 Compared Parameters

Parameter	Planned	Actual	Parameter	Planned	Actual
Instrument	ACIS	ACIS	Obspar format version number	7	7
Detector	ACIS-35678	ACIS-35678	Obspar file type	PREDICTED	ACTUAL
Grating	NONE	NONE	Obspar update status	NONE	UPDATED
Data mode	VFAINT	VFAINT	Number of optional ACIS chips dropped	0	0
Observation mode	POINTING	POINTING	On-chip summing requested	N	N
[deg] Pointing RA	167.924307	167.9789209280708	Subarray requested	NONE	NONE
[deg] Pointing Dec	-60.655780	-60.66096311810993	Alternating exposures requested	N	N
[deg] Pointing Roll	318.143078	318.3473032141221	[s] Primary exposure time	0.000000	3.1
[mm] SIM focus pos	-0.684267	-0.6828225247311905			
[mm] SIM defocus	0	0.001444936568705701			
[mm] SIM translation stage pos	-190.132523	-190.1400660498719			
[mm] SIM translation stage offset	0	0.00754346686406393			
[s] Observation start time (MET)	134621291.184000	134620179.23816			
Observation start date	2002-04-08T02:47:07	2002-04-08T02:29:39			
[s] Observation end time (MET)	134671291.184000	134671883.82776			
Observation end date	2002-04-08T16:40:27	2002-04-08T16:51:23			
Read mode	TIMED	TIMED			

## 2.3 Aspect



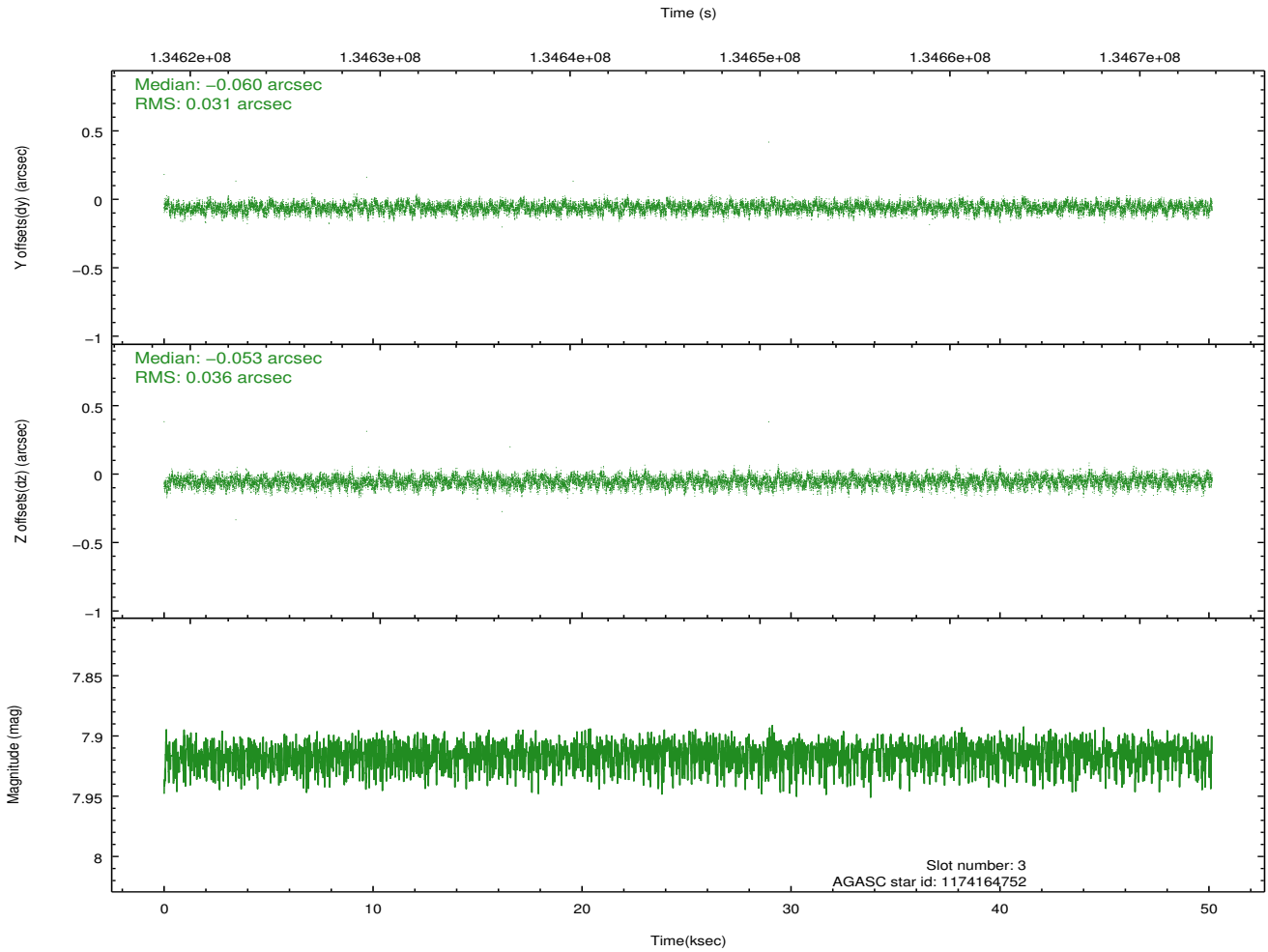
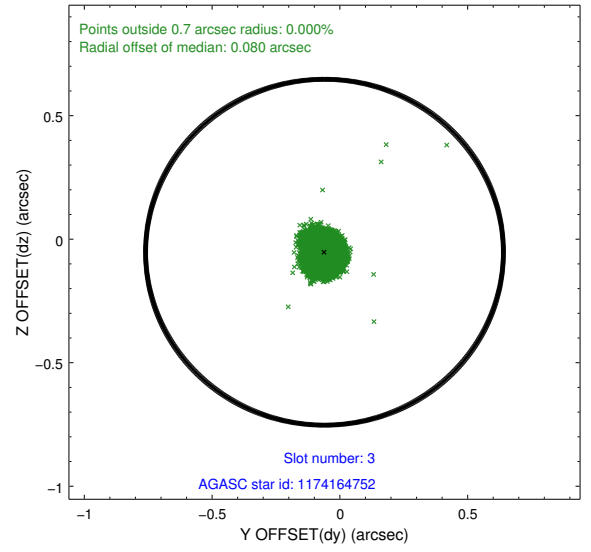
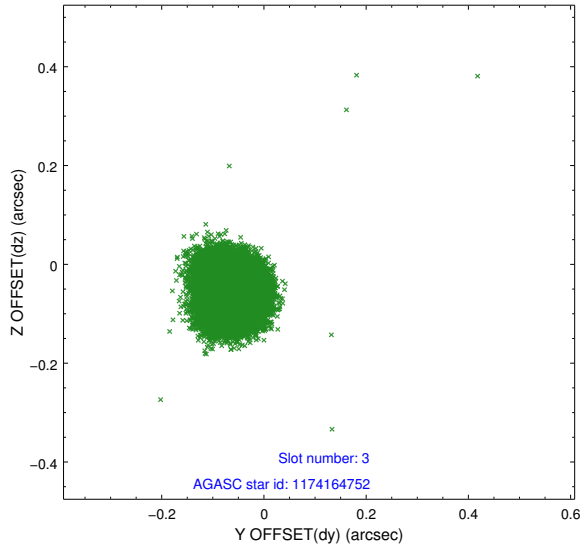


### Slot Statistics

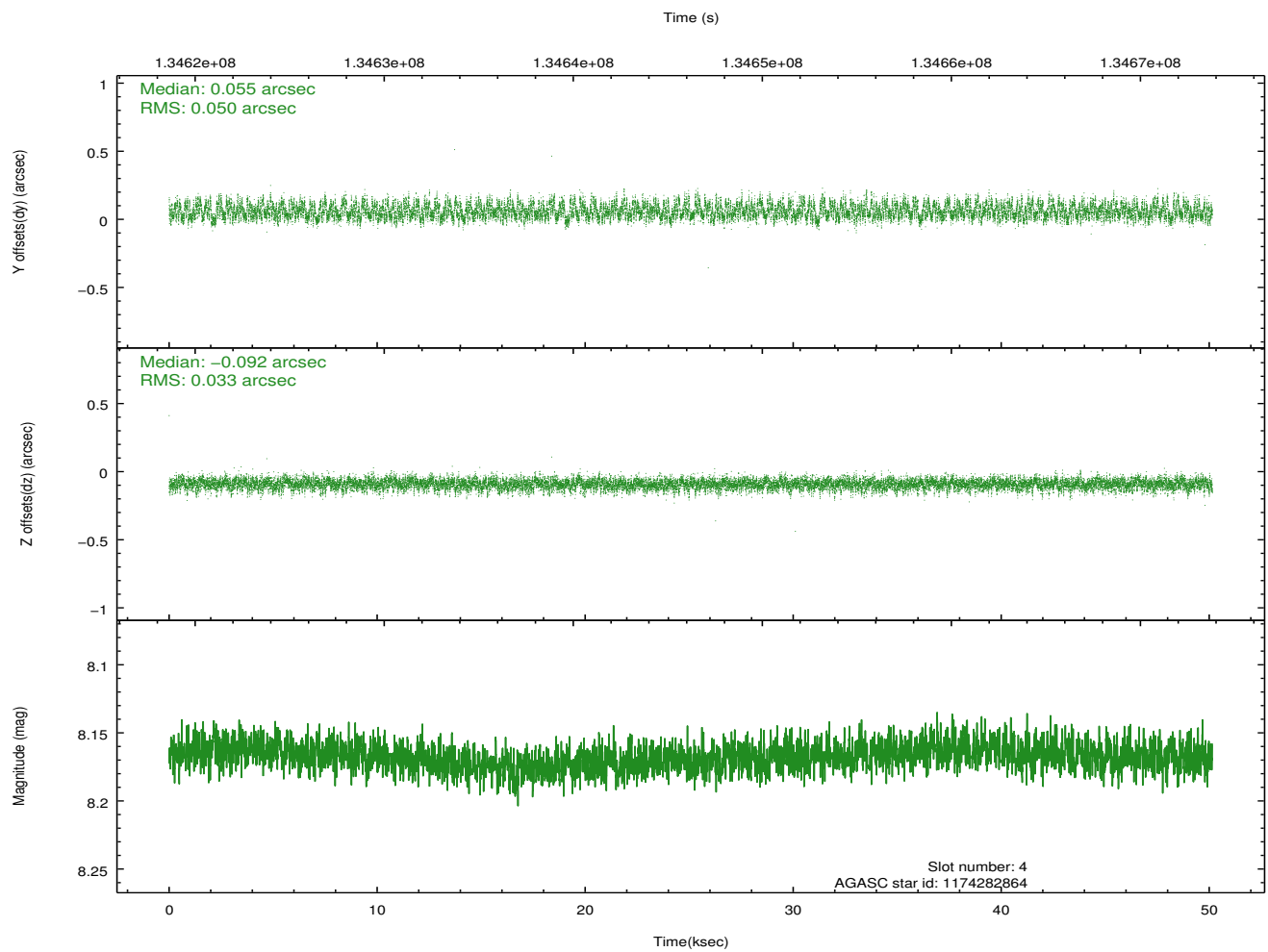
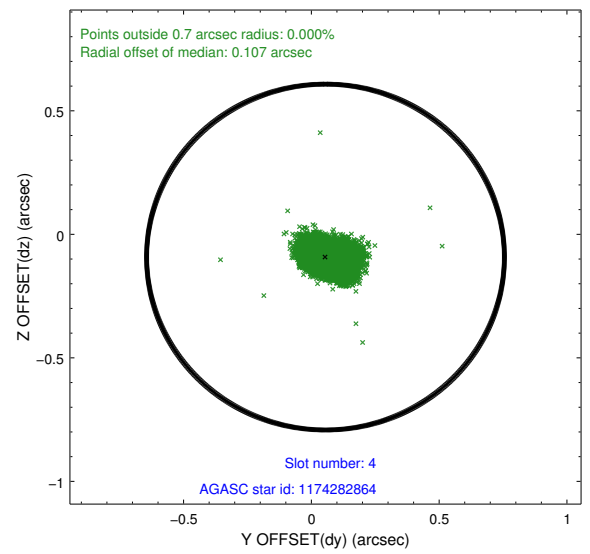
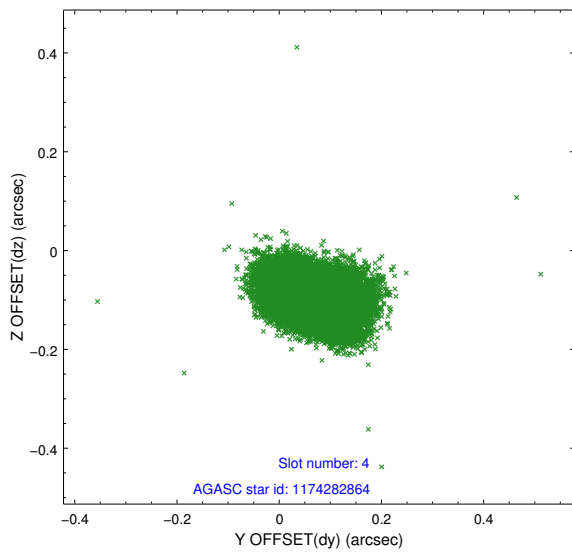
slot	status	id	mag	n_pts	med_dy	med_dz	dr1	dr2	ra	dec	mean_y	mean_z
0	FID	ACIS-S-1	7.18	12232	0.017	-0.052	0.011	0.022	0.000000	0.000000	941.77	-1723.46
1	FID	ACIS-S-5	7.24	12232	-0.011	0.017	0.010	0.025	0.000000	0.000000	-1807.25	174.22
2	FID	ACIS-S-6	7.36	12233	-0.027	0.046	0.010	0.033	0.000000	0.000000	407.32	818.16
3	GUIDE	1174164752	7.92	24464	-0.060	-0.053	0.050	0.081	166.202600	-60.663321	-2215.90	-2075.97
4	GUIDE	1174282864	8.17	24460	0.055	-0.092	0.063	0.105	167.509743	-60.095137	-1898.58	1005.00
5	GUIDE	1174292200	8.64	24462	0.033	-0.021	0.067	0.111	169.118665	-60.567864	1376.01	1631.77
6	GUIDE	1174277296	8.71	24457	-0.088	0.146	0.060	0.097	167.558753	-61.273161	1014.24	-2078.23
7	GUIDE	1174291496	9.18	24389	0.059	0.022	0.080	0.131	169.263734	-60.928087	2416.05	815.85

## 2.4 Star Slots

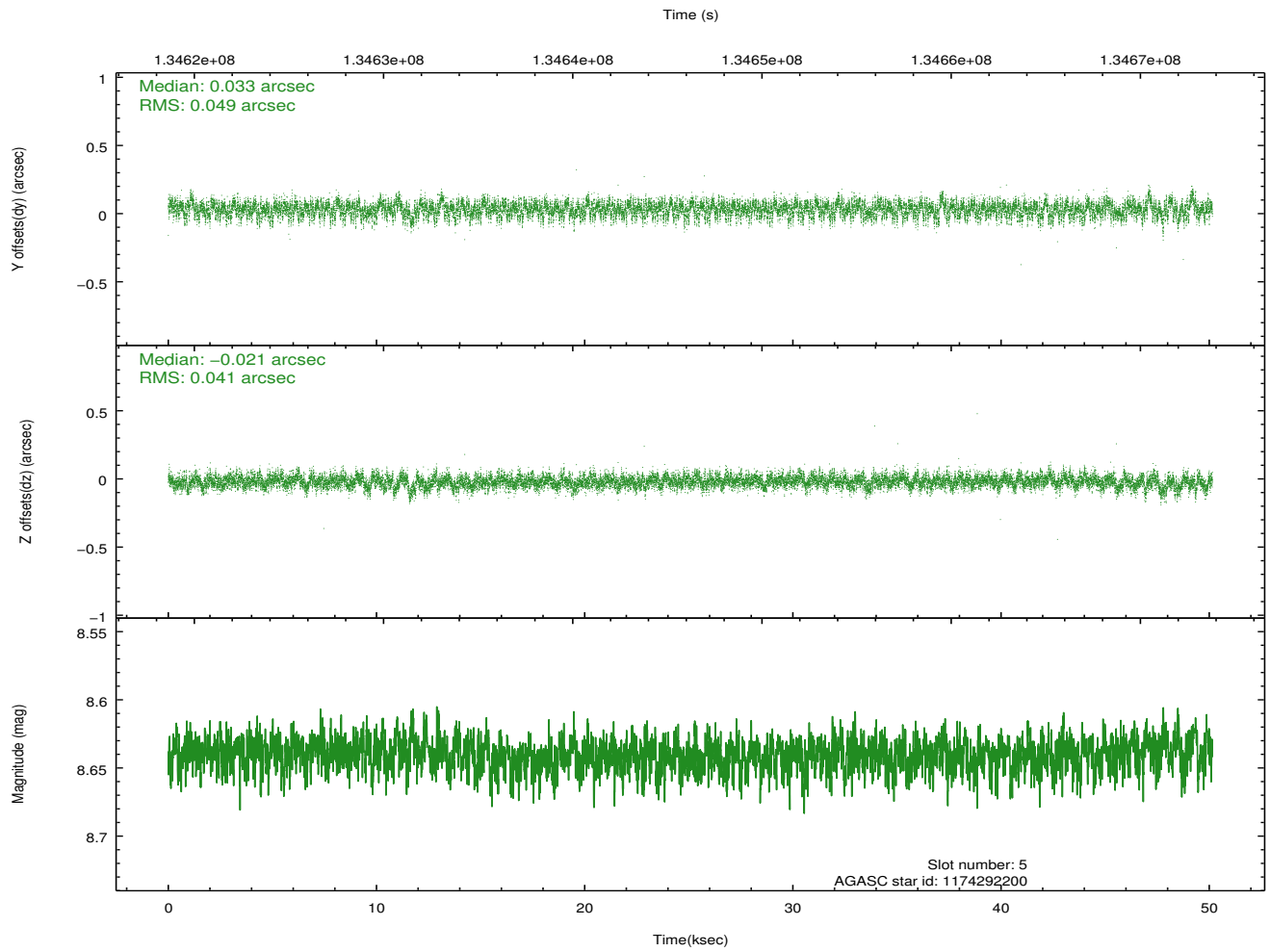
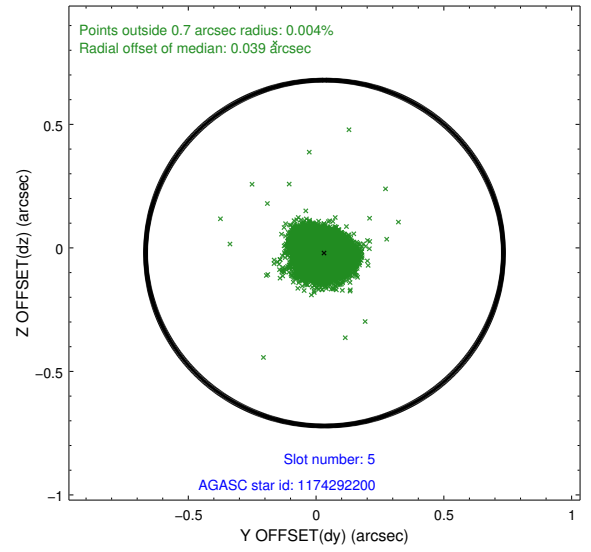
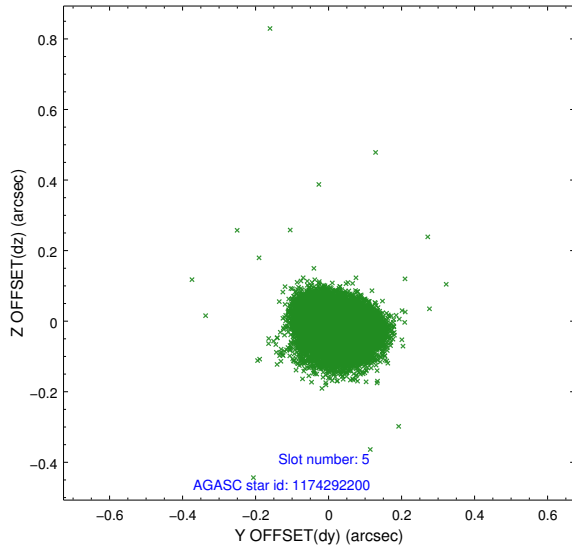
### 2.4.1 Slot 3



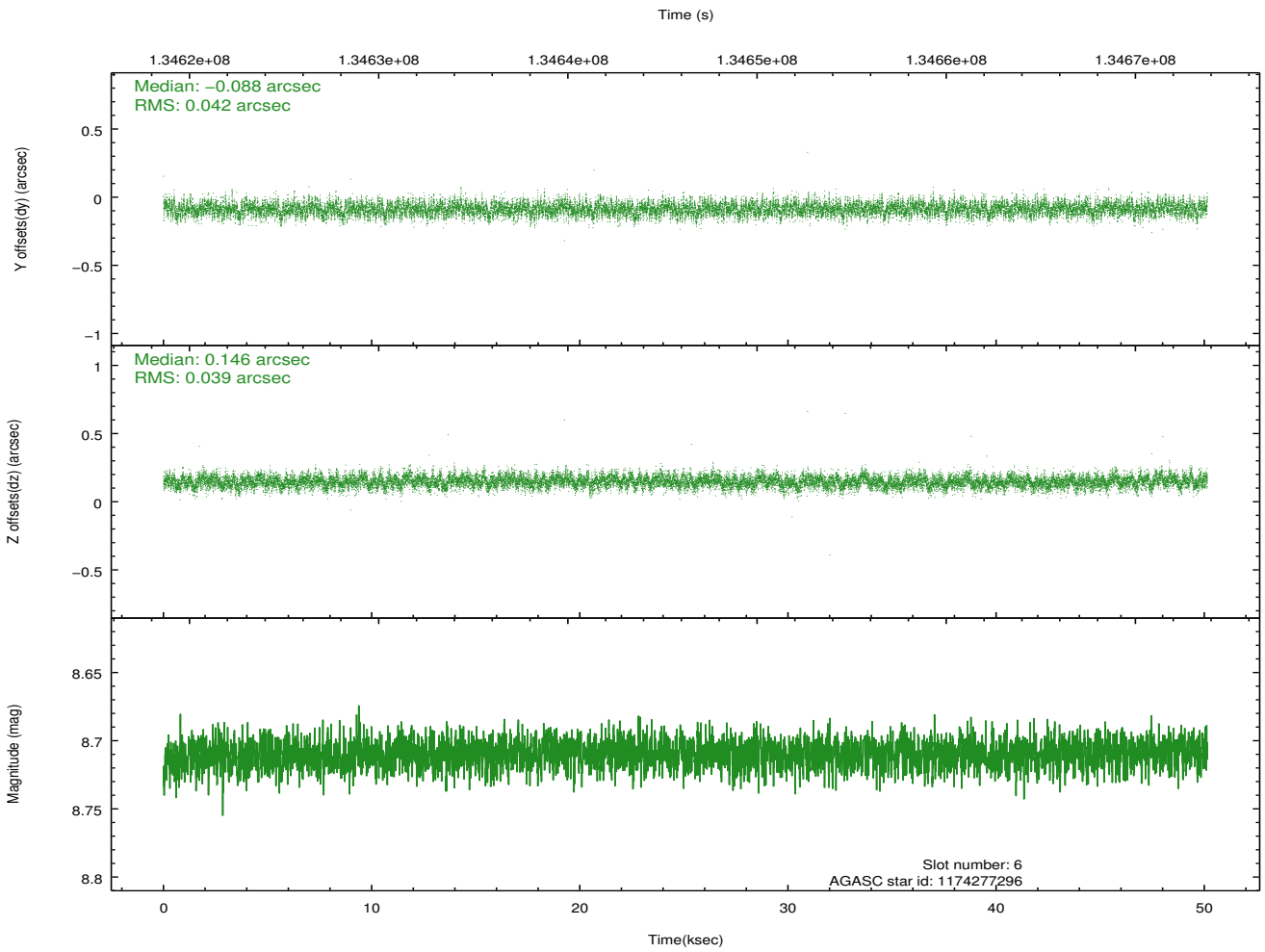
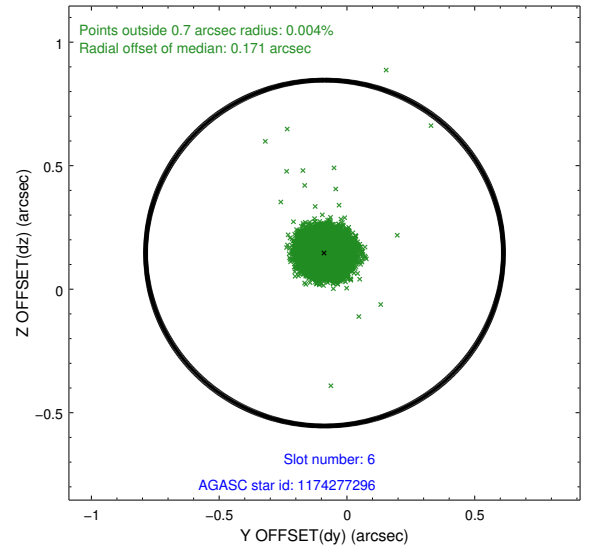
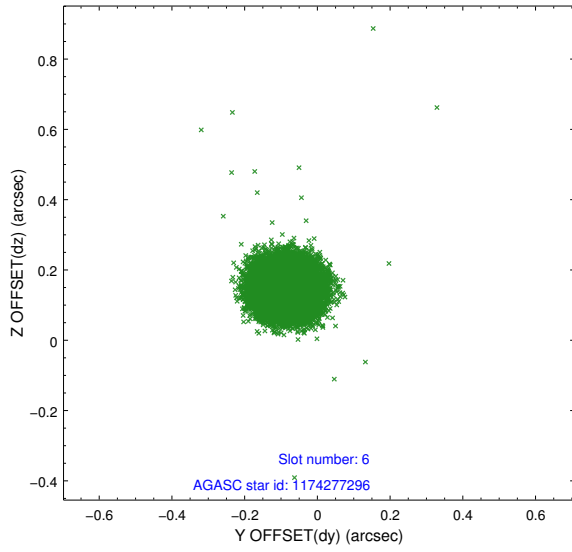
## 2.4.2 Slot 4



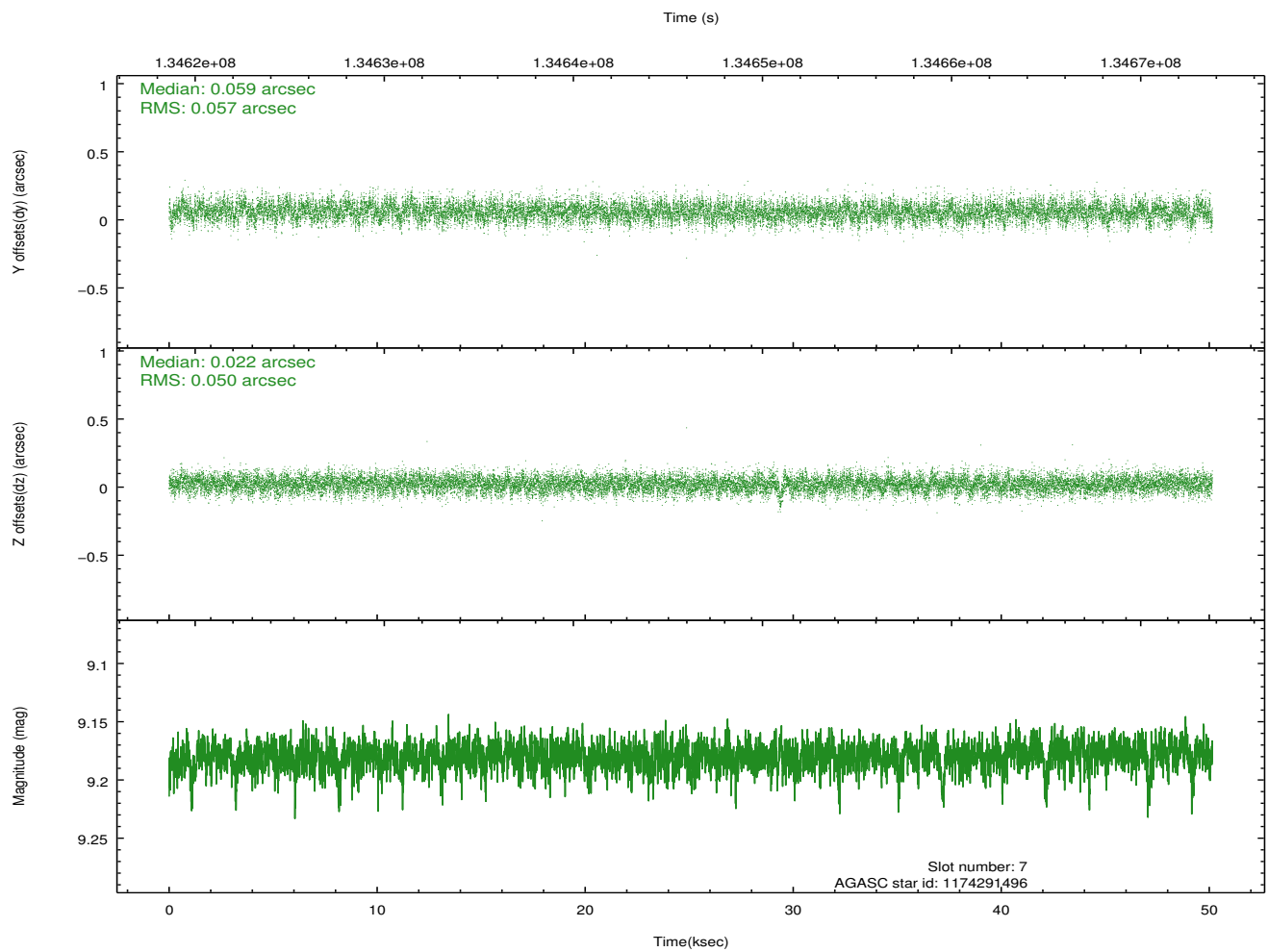
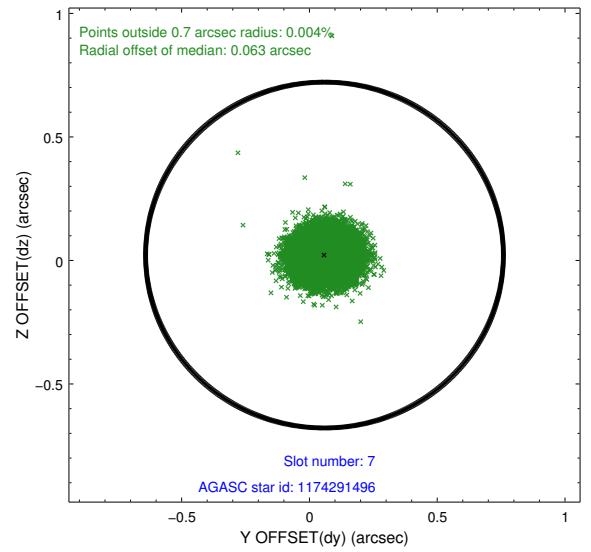
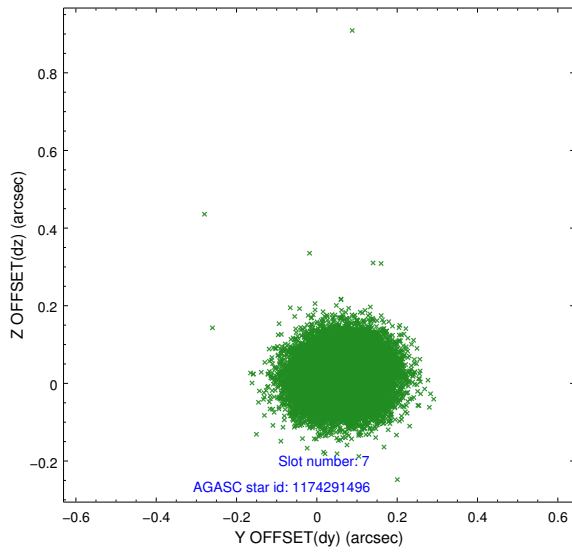
### 2.4.3 Slot 5



## 2.4.4 Slot 6

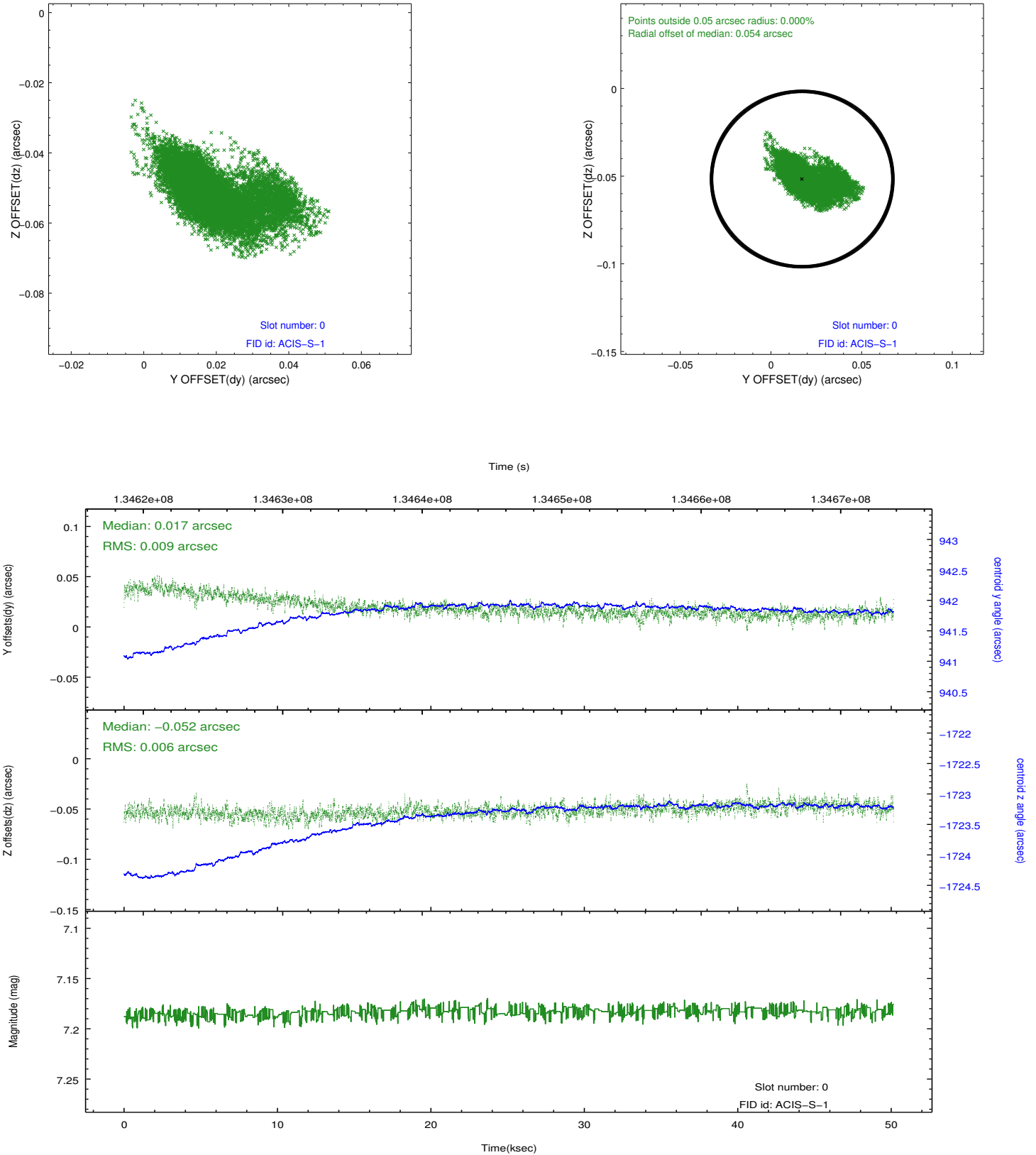


## 2.4.5 Slot 7

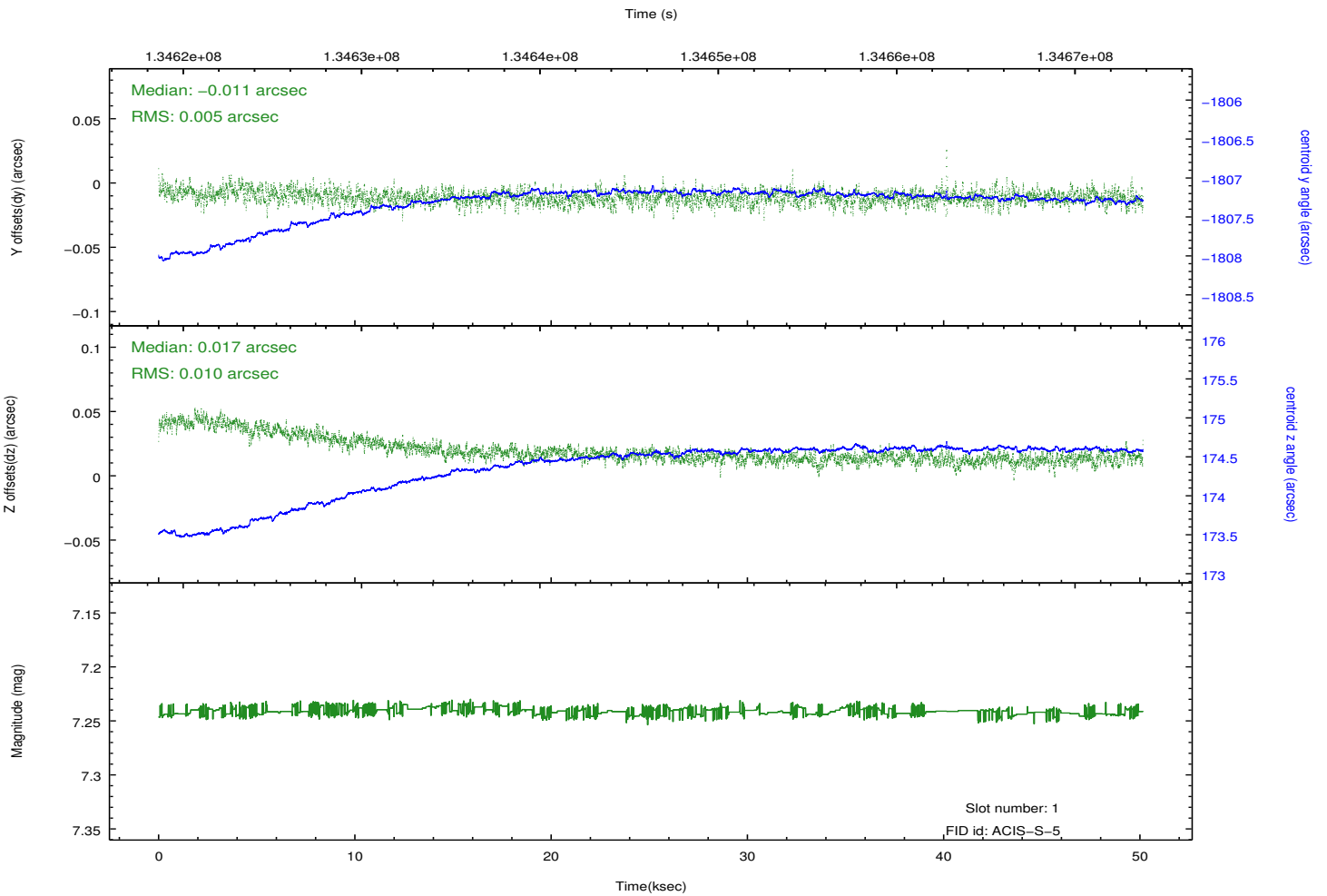
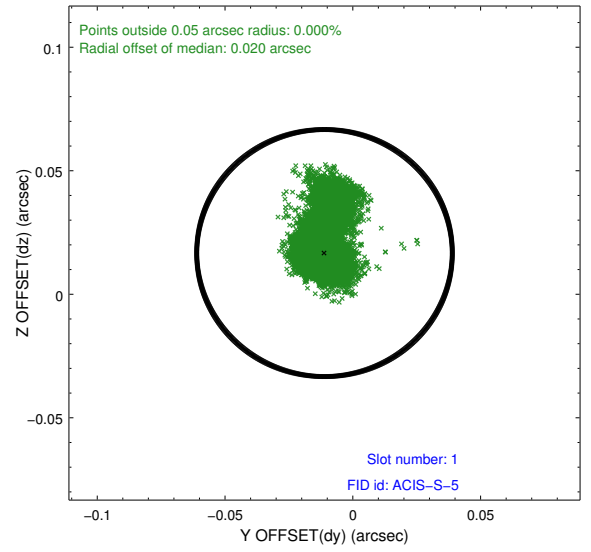
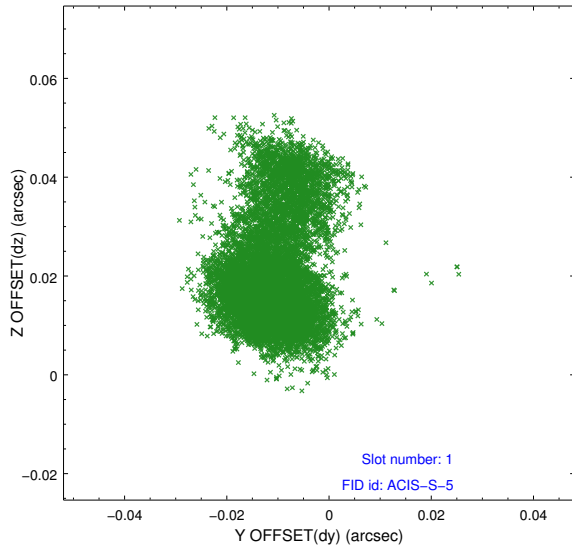


## 2.5 FID Slots

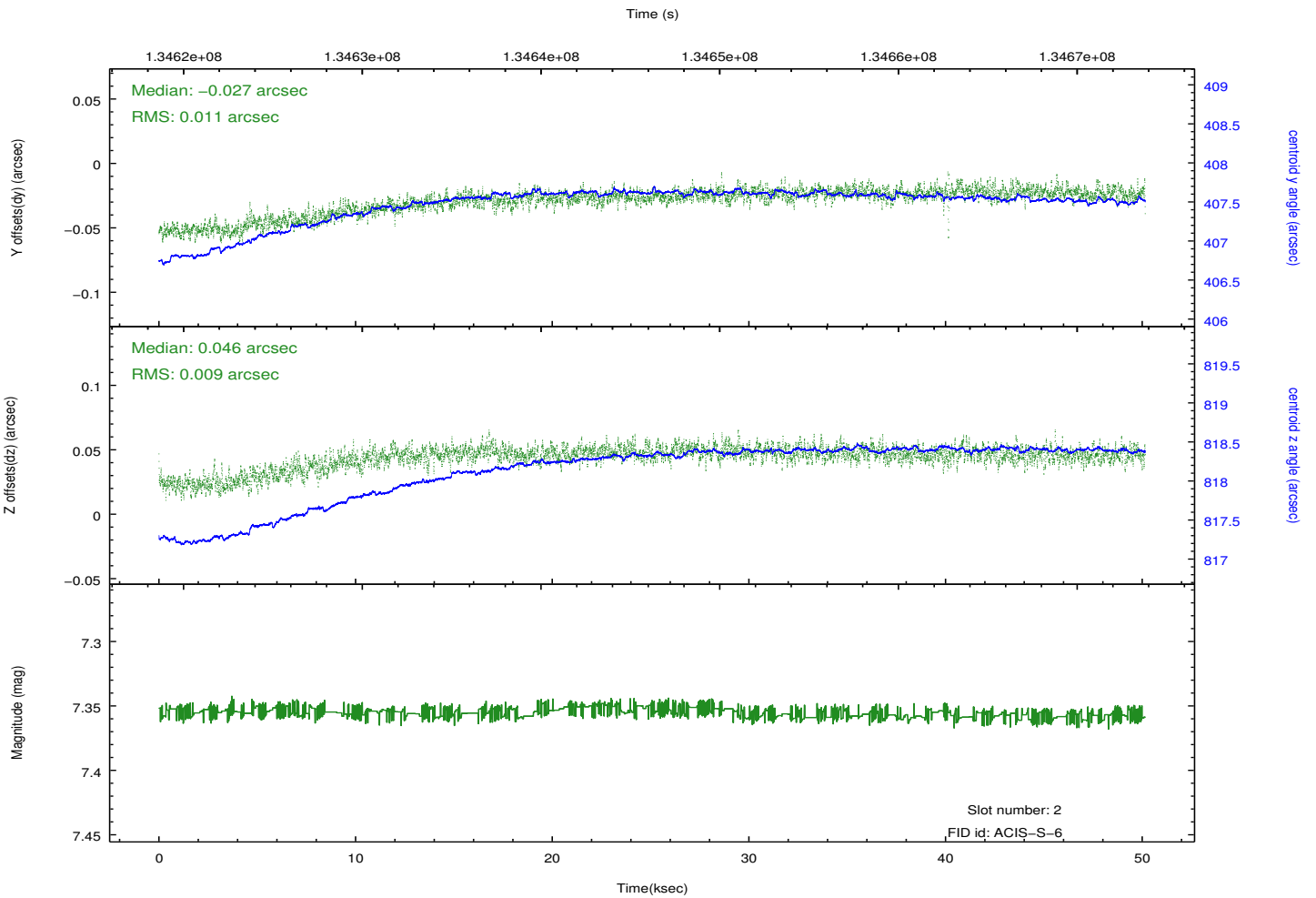
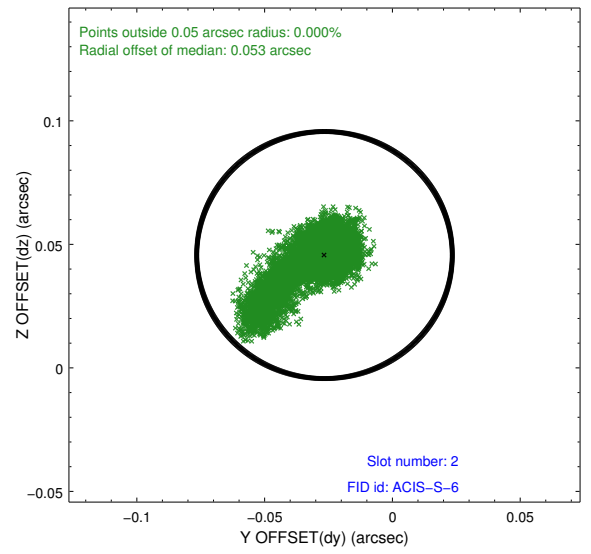
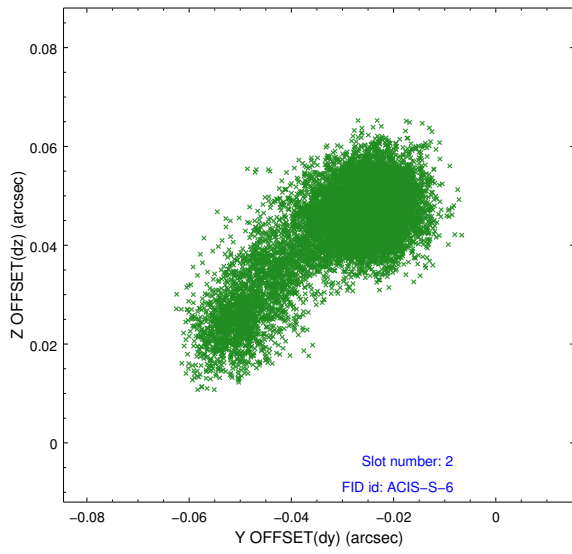
### 2.5.1 Slot 0



## 2.5.2 Slot 1



### 2.5.3 Slot 2



# A Summary

## A.1 Status

V&V Scientist	Beth Sundheim
V&V Date (YYYY-MM-DD)	2012.10.10
V&V Edition	1
V&V Disposition and Status	OK
V&V Charge Time	50.142

## A.2 Comments