

V&V Reference Report

L2 ASCDS Version : 8.4.5

Observation 2882 - L2 Version 3
Chandra X-Ray Center

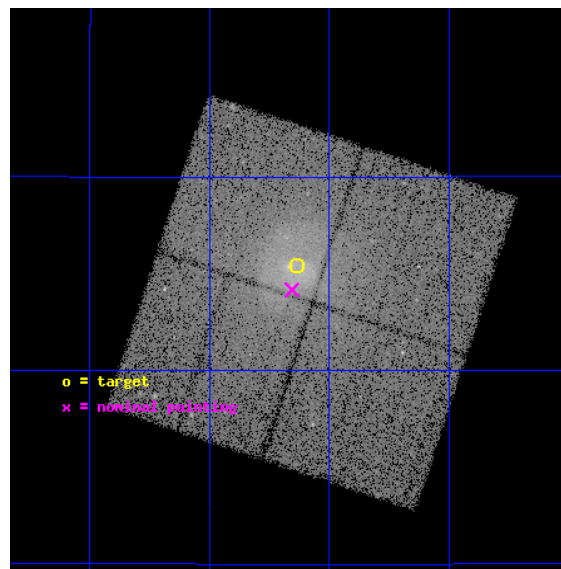
L2 Processing Date : Sep 30 2012

Contents

1	Front	2
2	OBI	3
2.1	OBI	3
2.1.1	Images	3
2.1.2	Bias	3
2.1.3	Parameters	4
2.1.4	Events	4
2.2	Compared Parameters	5
2.3	Aspect	6
2.4	Star Slots	9
2.4.1	Slot 4	9
2.4.2	Slot 6	10
2.4.3	Slot 7	11
2.5	FID Slots	12
2.5.1	Slot 0	12
2.5.2	Slot 1	13
2.5.3	Slot 2	14
A	Summary	15
A.1	Status	15
A.2	Comments	15

1 Front

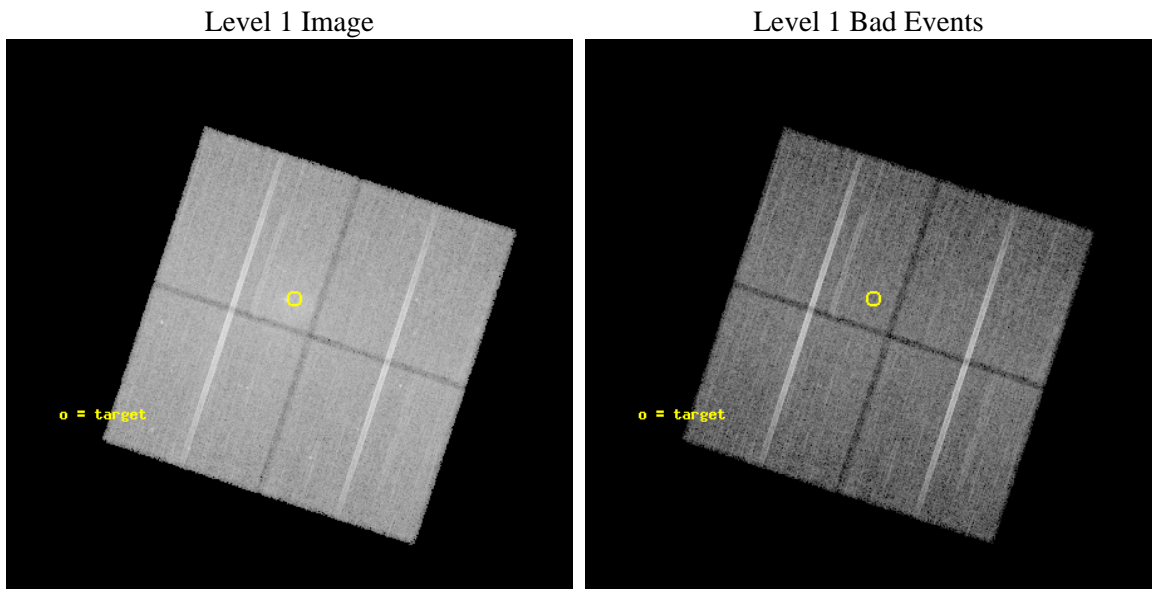
seq_num	600219	Sequence number
obs_id	2882	Observation id
title	NGC507 -- A GALAXY IN THE ACT OF MERGING	Proposal title
observer	Dr. Stephen Murray	Principal investigator
object	NGC507	Source name
dtcycle	0	
cycle	P	events from which exps? Prim/Second/Both
ra_targ	20.908333	Observer's specified target RA [deg]
dec_targ	33.256667	Observer's specified target Dec [deg]
ra_nom	20.914066094448	Nominal RA [deg]
dec_nom	33.236151949927	Nominal Dec [deg]
roll_nom	288.29385253566	Nominal Roll [deg]
revision	3	Processing version of data
ontime	44202.858944759	Sum of GTIs [s]
livetime	43625.316050974	Livetime [s]
ontime0	44199.717994511	Sum of GTIs [s]
ontime1	44202.858924836	Sum of GTIs [s]
ontime2	44199.717994511	Sum of GTIs [s]
ontime3	44202.858944759	Sum of GTIs [s]
l2events	180644	Number of level 2 events



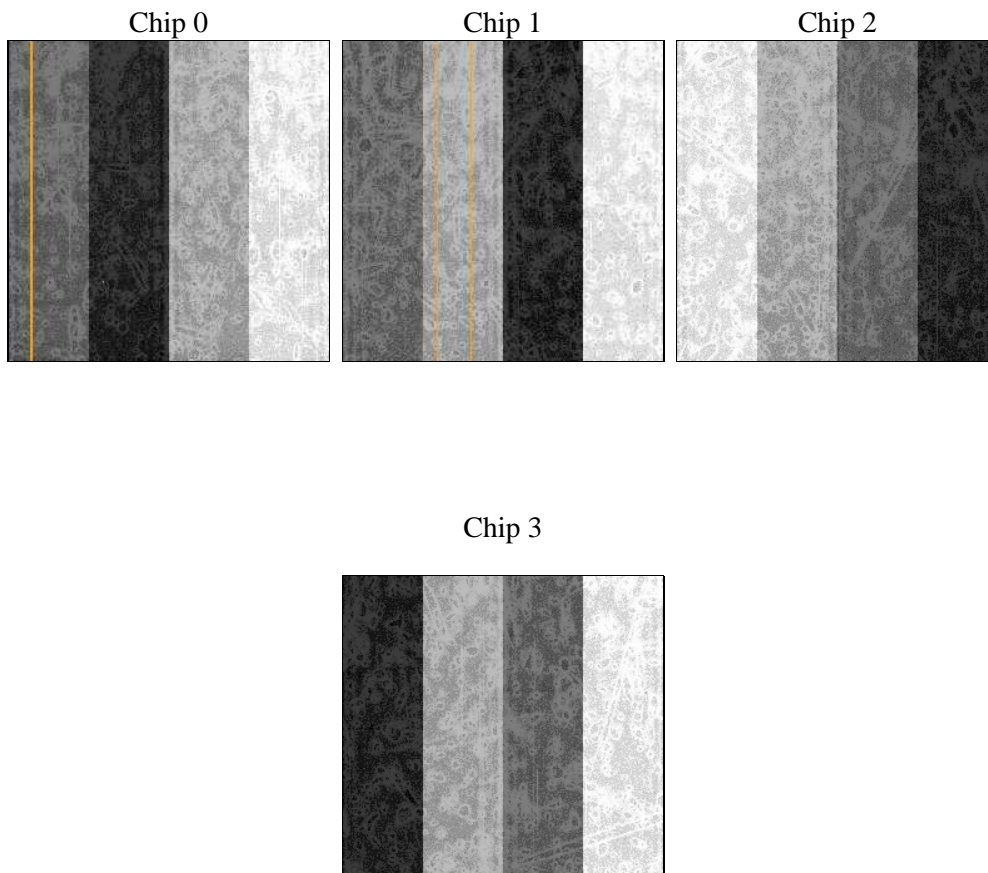
2 OBI

2.1 OBI

2.1.1 Images



2.1.2 Bias



2.1.3 Parameters

obi_num	0	Obi number	sched_exp_time	44000.000000	[s] Scheduled observation exposure time
ascdsver	8.4.5	Processing system revision	ontime	44202.858944759	Sum of GTIs [s]
caldbver	4.5.2	 	ontime0	44199.717994511	Sum of GTIs [s]
date	2012-09-30T04:01:18	Date and time of file creation	ontime1	44202.858924836	Sum of GTIs [s]
revision	3	Processing version of data	ontime2	44199.717994511	Sum of GTIs [s]
			ontime3	44202.858944759	Sum of GTIs [s]
			l1events	1156171	Number of level 1 events

2.1.4 Events

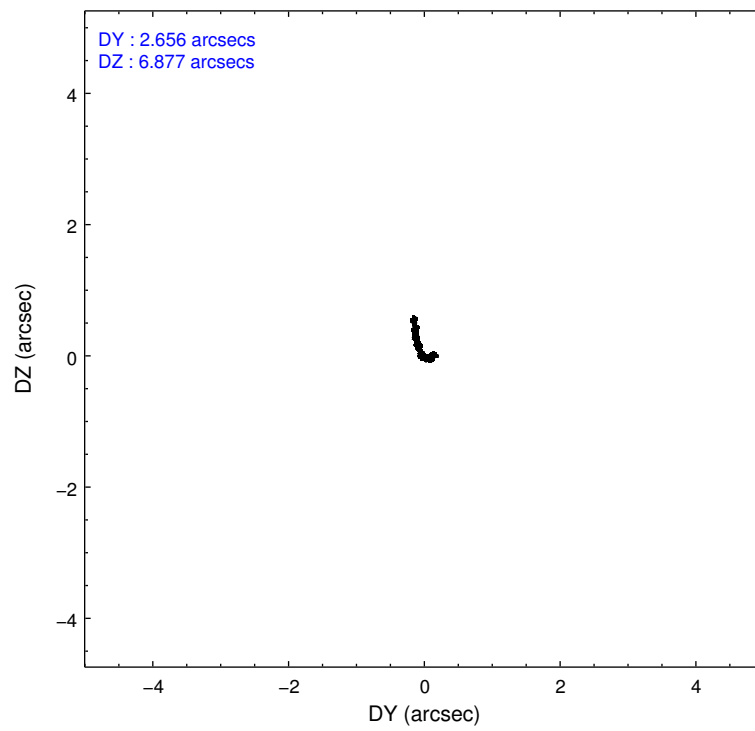
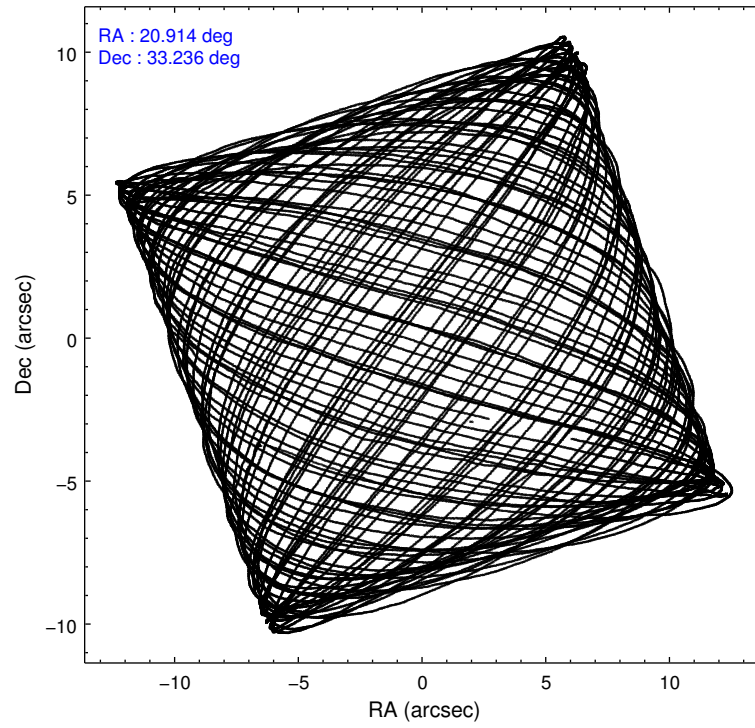
	ccd 0	ccd 1	ccd 2	ccd 3
level 1 events	265099	273804	300765	316503
rejected events	224513	225427	254175	247441
rejected %	84%	82%	84%	78%

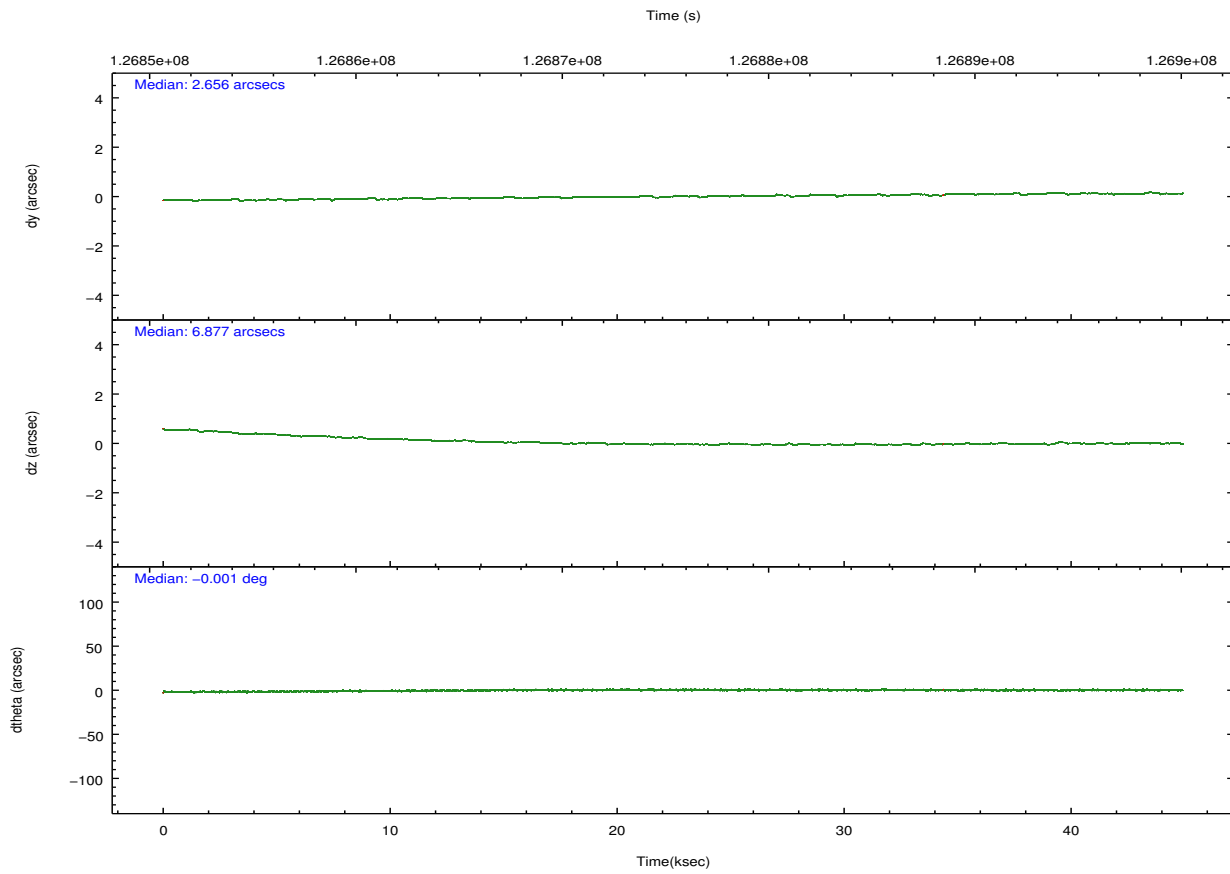
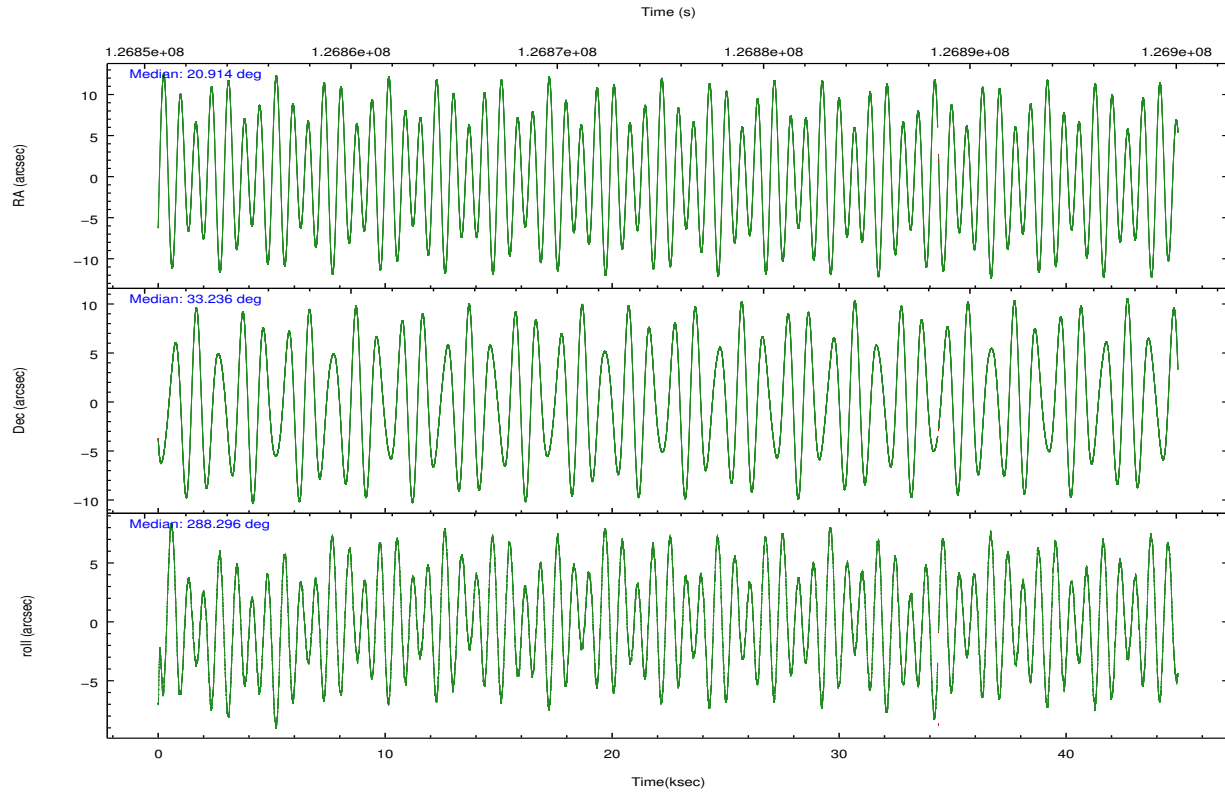
	ccd 0	ccd 1	ccd 2	ccd 3
grade 0 events	19744	24963	25479	45059
	7%	9%	8%	14%
grade 1 events	155	161	157	257
	0%	0%	0%	0%
grade 2 events	7974	8782	8469	9809
	3%	3%	2%	3%
grade 3 events	3549	3958	3338	3866
	1%	1%	1%	1%
grade 4 events	3214	3761	3356	3851
	1%	1%	1%	1%
grade 5 events	10331	11339	10025	11200
	3%	4%	3%	3%
grade 6 events	6155	6957	5999	6549
	2%	2%	1%	2%
grade 7 events	213977	213883	243942	235912
	80%	78%	81%	74%

2.2 Compared Parameters

Parameter	Planned	Actual	Parameter	Planned	Actual
Instrument	ACIS	ACIS	Obspar format version number	7	7
Detector	ACIS-0123	ACIS-0123	Obspar file type	PREDICTED	ACTUAL
Grating	NONE	NONE	Obspar update status	NONE	UPDATED
Data mode	VFAINT	VFAINT	Number of optional ACIS chips dropped	0	0
Observation mode	POINTING	POINTING	On-chip summing requested	N	N
[deg] Pointing RA	20.889535	20.91406609444754	Subarray requested	NONE	NONE
[deg] Pointing Dec	33.254329	33.23615194992686	Alternating exposures requested	N	N
[deg] Pointing Roll	288.098615	288.2938525356578	[s] Primary exposure time	0.000000	3.1
[mm] SIM focus pos	-0.782348	-0.7809083437167272			
[mm] SIM defocus	0	0.001439871863259334			
[mm] SIM translation stage pos	-231.592463	-231.5986110572947			
[mm] SIM translation stage offset	-2	-1.993841945634955			
[s] Observation start time (MET)	126853831.184000	126852500.34934			
Observation start date	2002-01-08T05:09:27	2002-01-08T04:48:20			
[s] Observation end time (MET)	126897831.184000	126898553.08869			
Observation end date	2002-01-08T17:22:47	2002-01-08T17:35:53			
Read mode	TIMED	TIMED			

2.3 Aspect



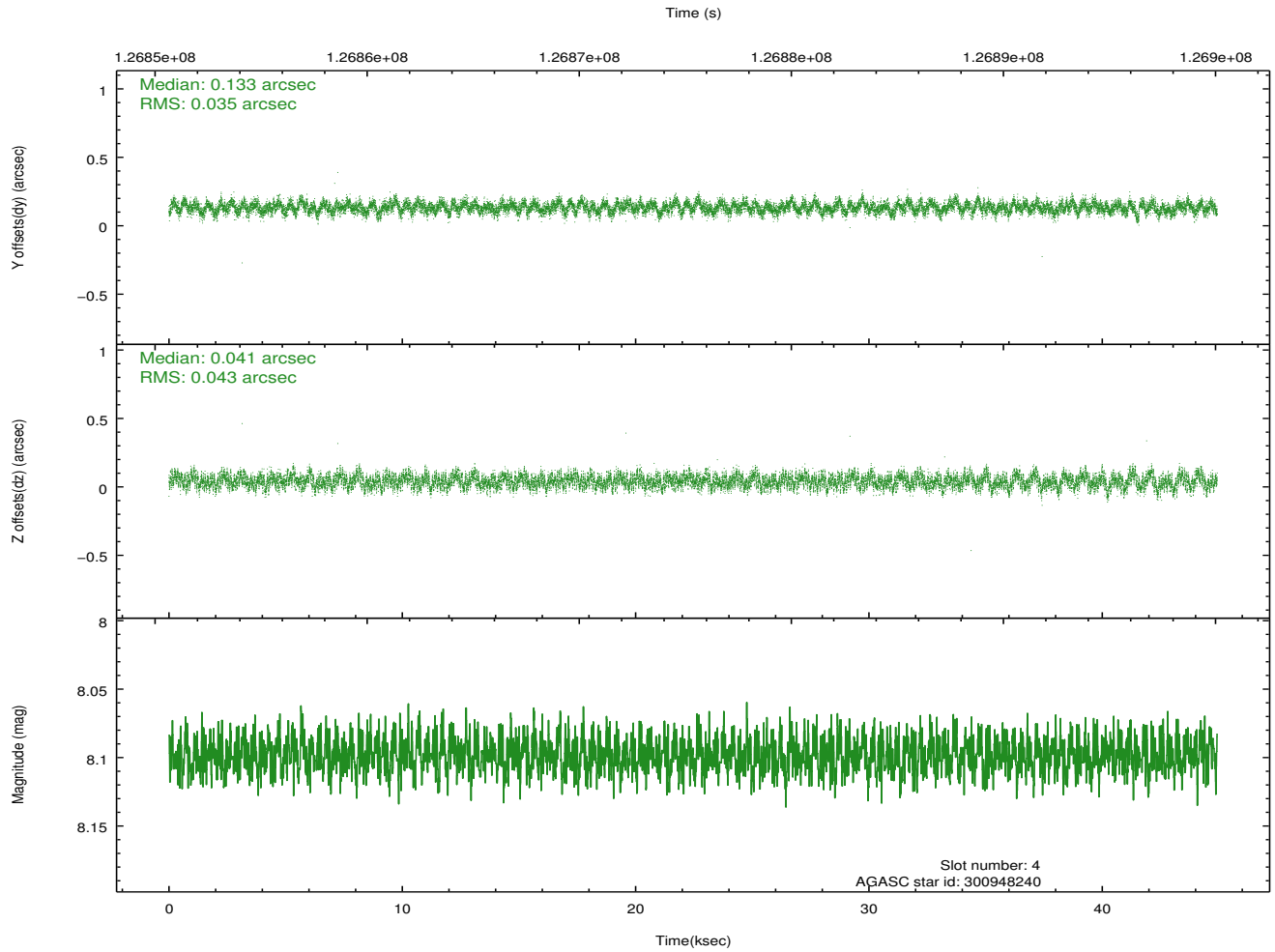
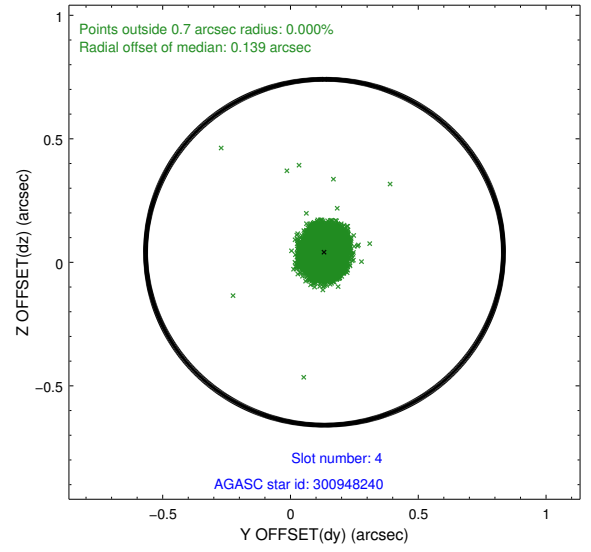
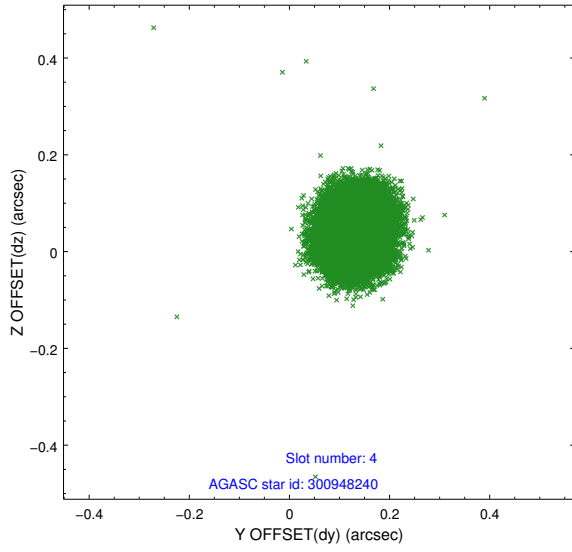


Slot Statistics

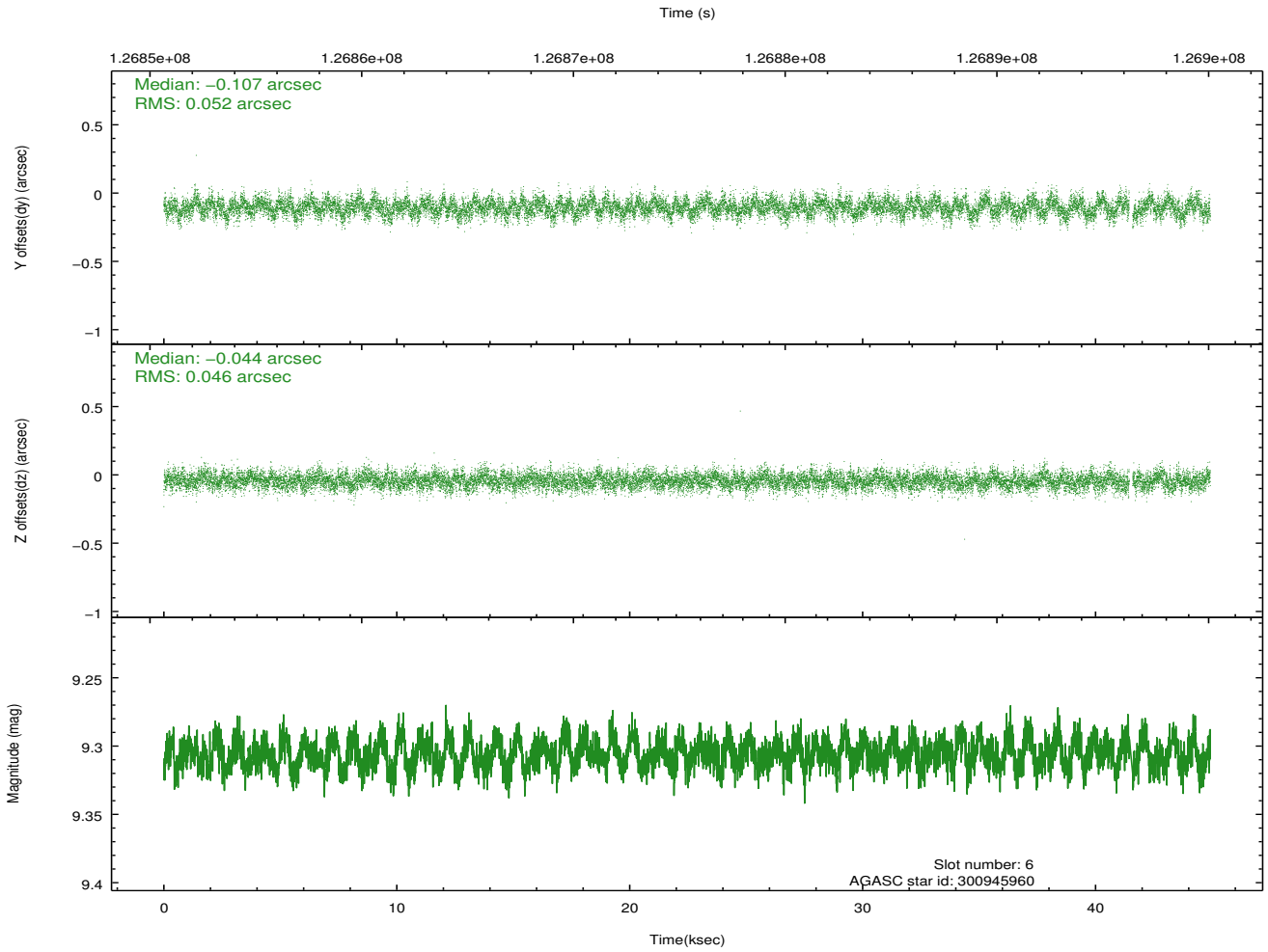
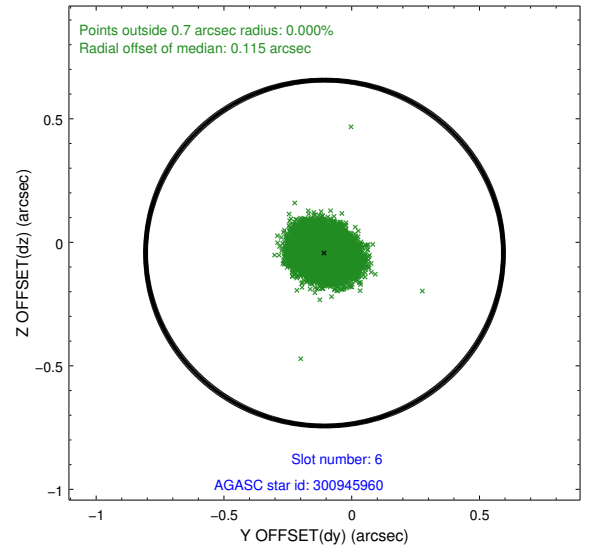
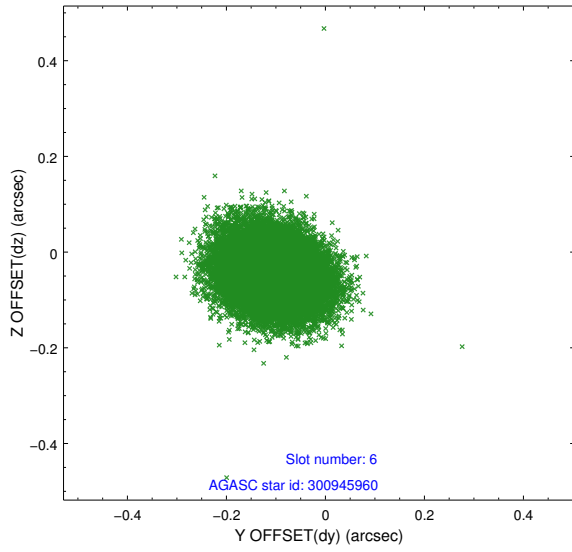
slot	status	id	mag	n_pts	med_dy	med_dz	dr1	dr2	ra	dec	mean_y	mean_z
0	FID	ACIS-I-1	7.24	10949	-0.012	0.069	0.009	0.020	0.000000	0.000000	937.09	-871.15
1	FID	ACIS-I-5	7.23	10947	-0.076	0.044	0.010	0.019	0.000000	0.000000	-1811.06	1026.35
2	FID	ACIS-I-6	7.24	10950	-0.003	-0.042	0.008	0.014	0.000000	0.000000	402.68	1670.74
3	UNUSED		0.00	0	0.000	0.000	0.000	0.000	0.000000	0.000000	0.00	0.00
4	GUIDE	300948240	8.10	21898	0.133	0.041	0.059	0.093	21.318271	32.949093	1444.16	889.74
5	UNUSED		0.00	0	0.000	0.000	0.000	0.000	0.000000	0.000000	0.00	0.00
6	GUIDE	300945960	9.31	21819	-0.107	-0.044	0.074	0.120	20.665202	33.720044	-1803.36	-118.25
7	GUIDE	300943032	6.93	21896	-0.027	0.001	0.049	0.080	20.800487	33.289899	-205.52	-215.73

2.4 Star Slots

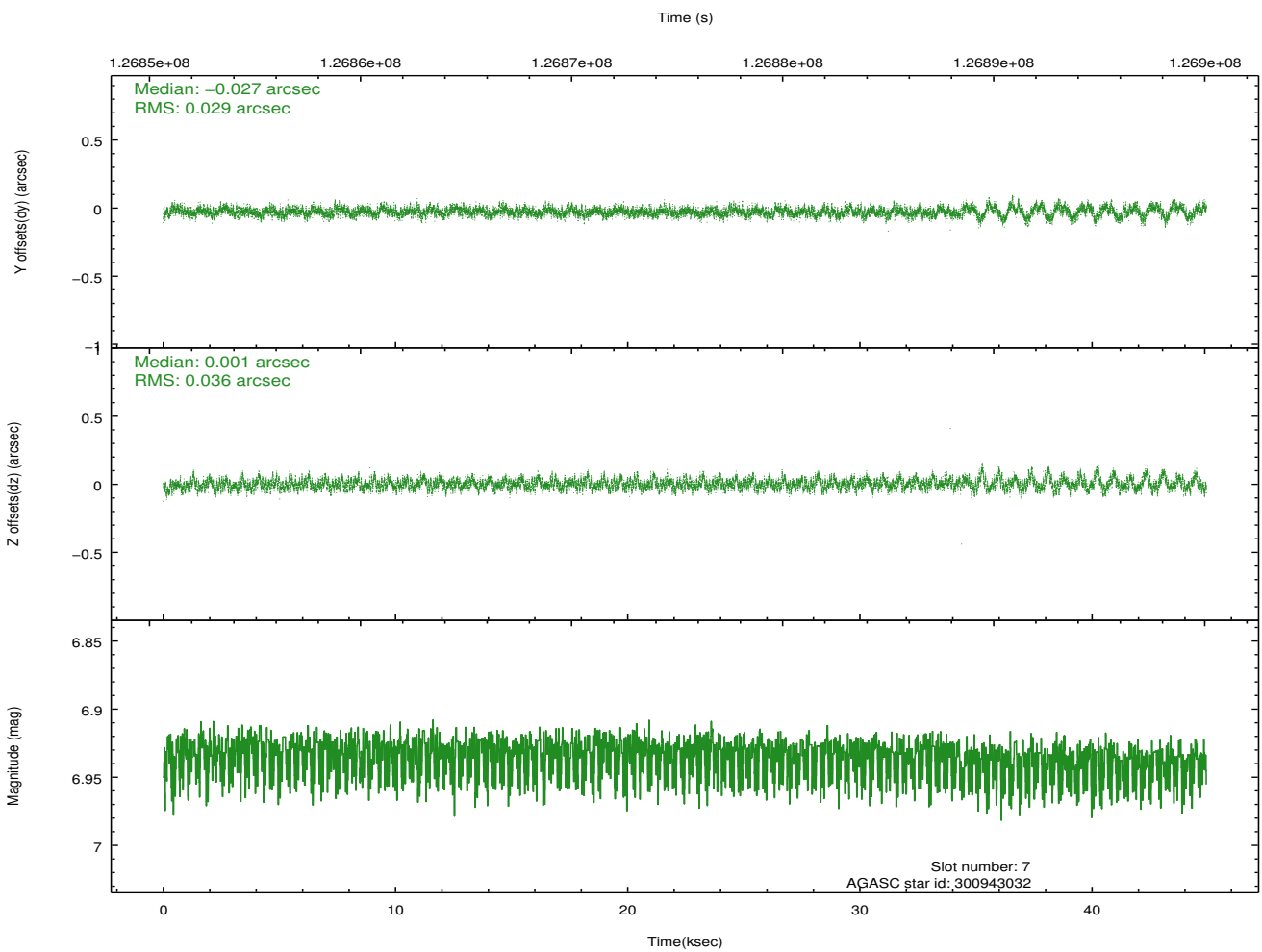
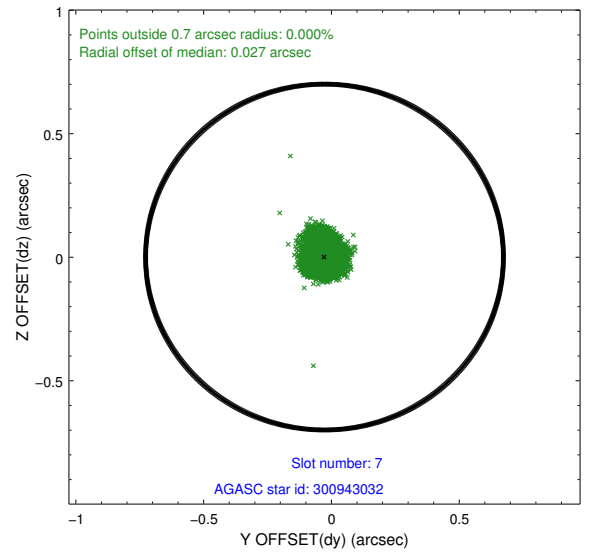
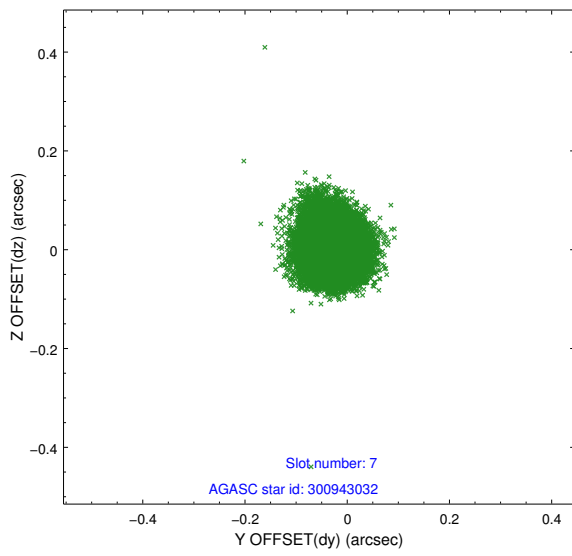
2.4.1 Slot 4



2.4.2 Slot 6

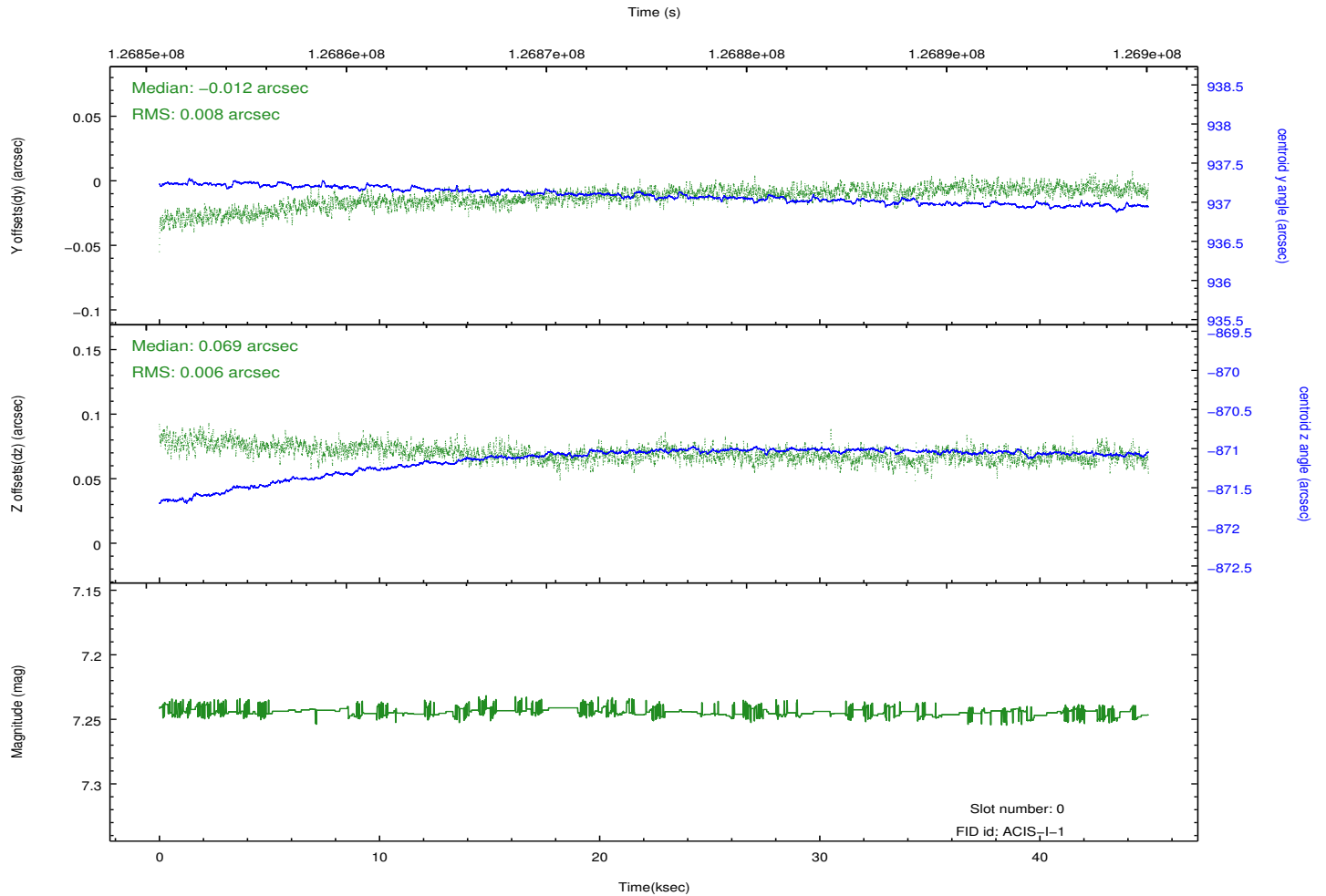
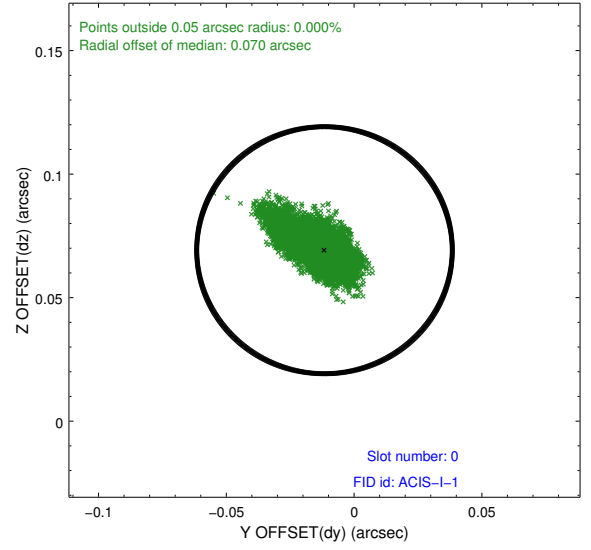
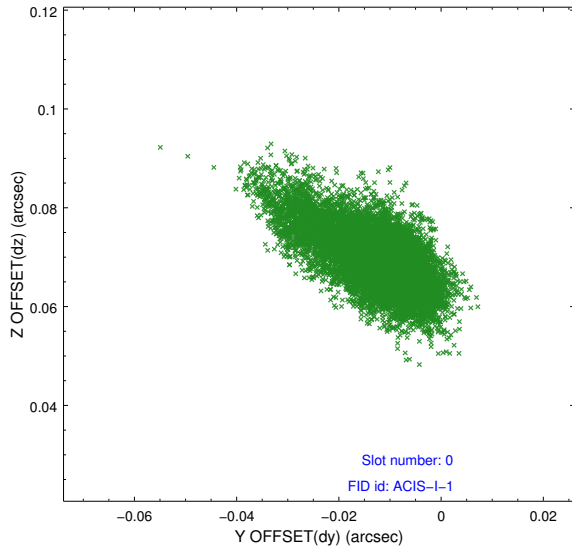


2.4.3 Slot 7

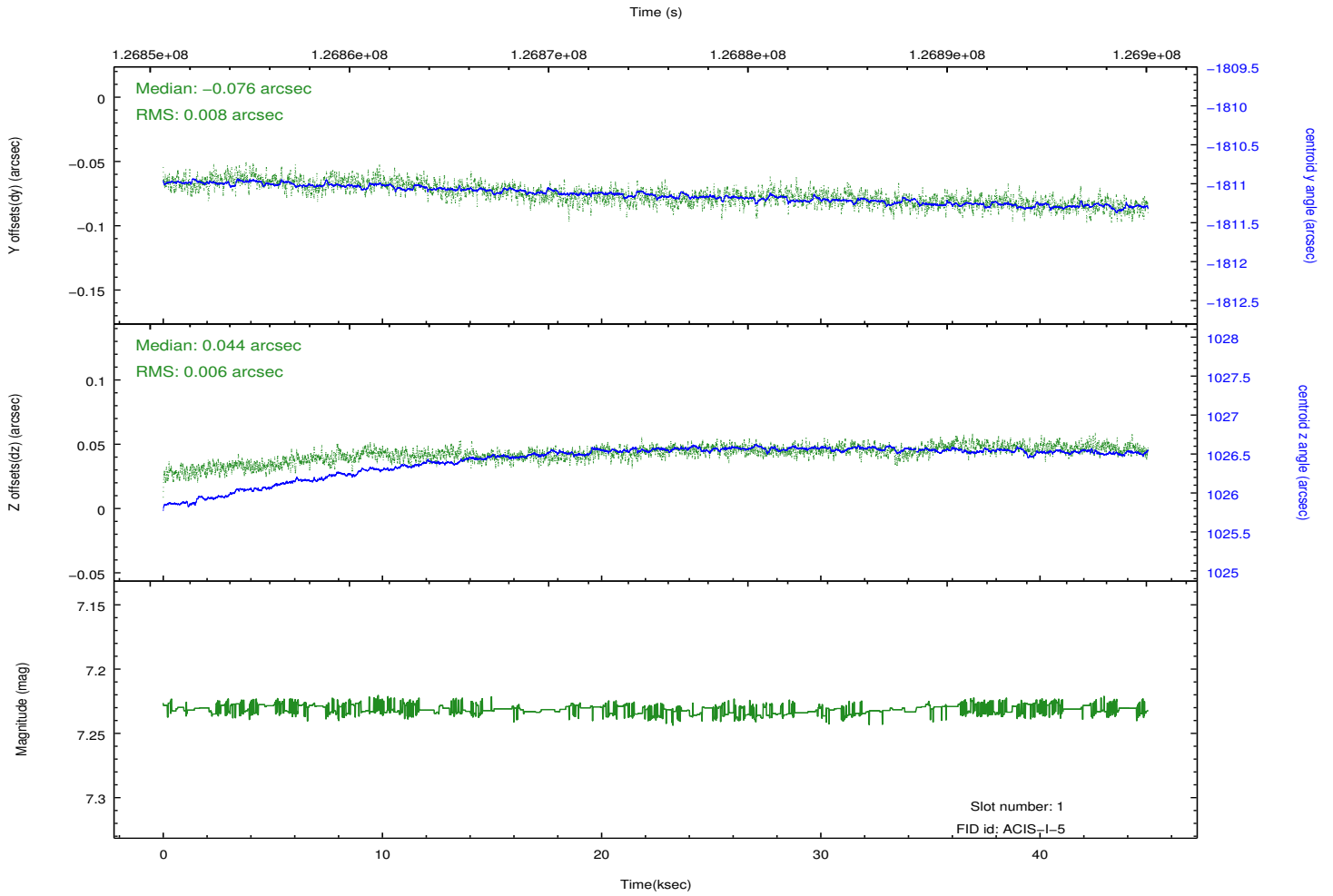
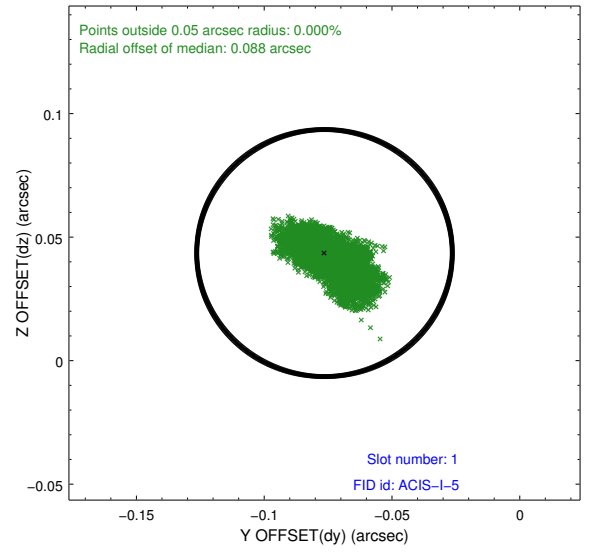
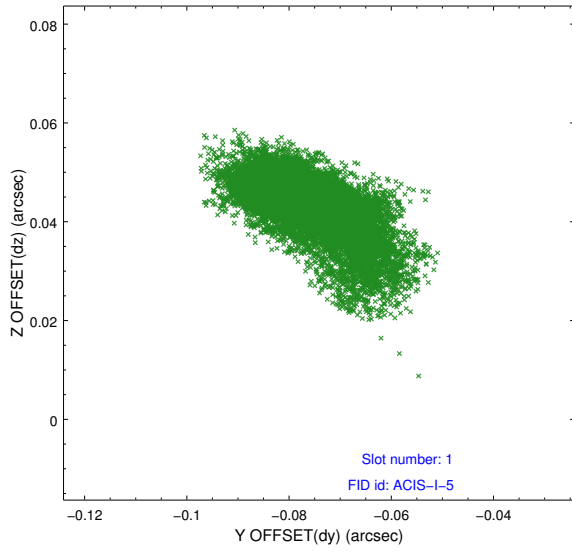


2.5 FID Slots

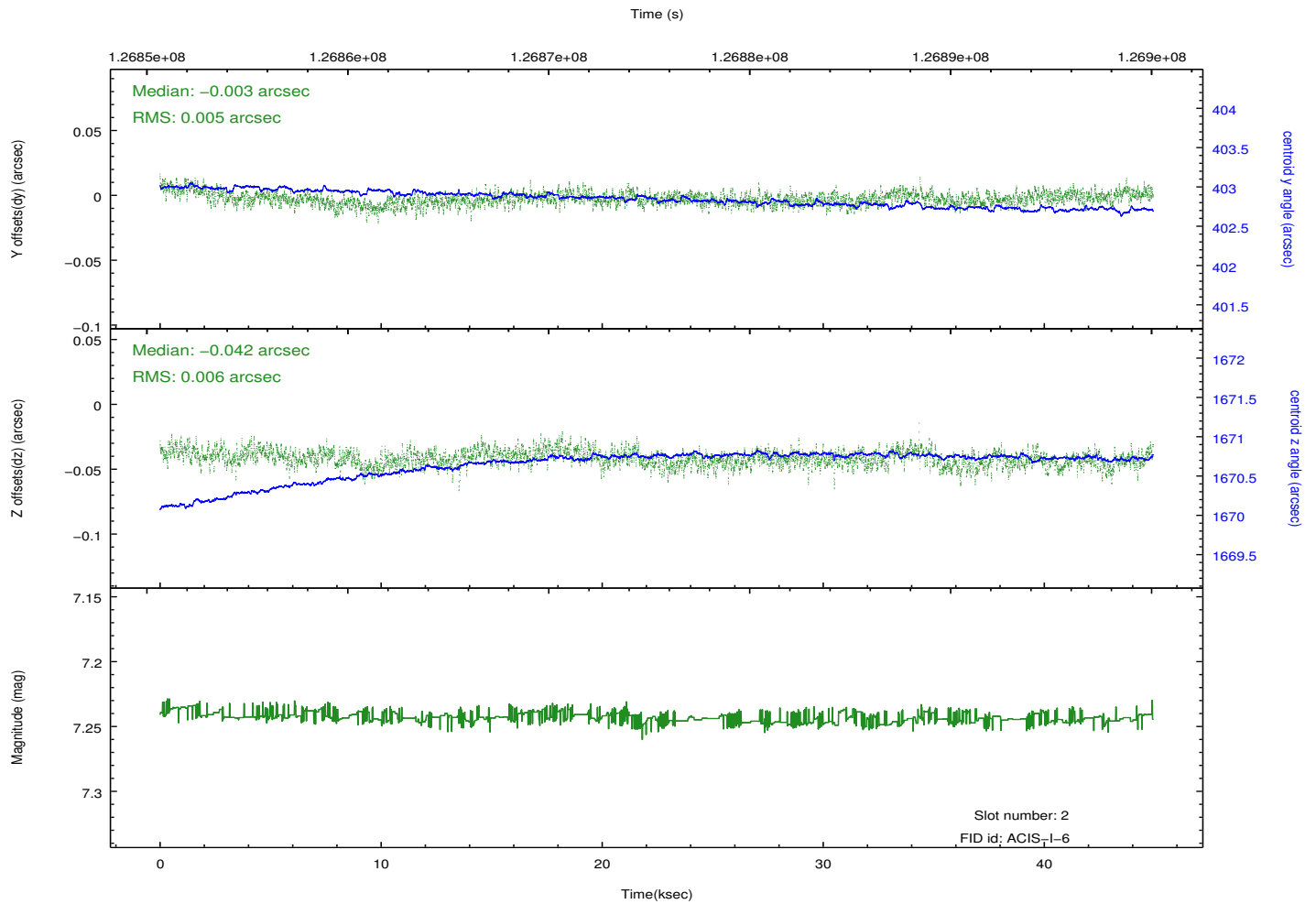
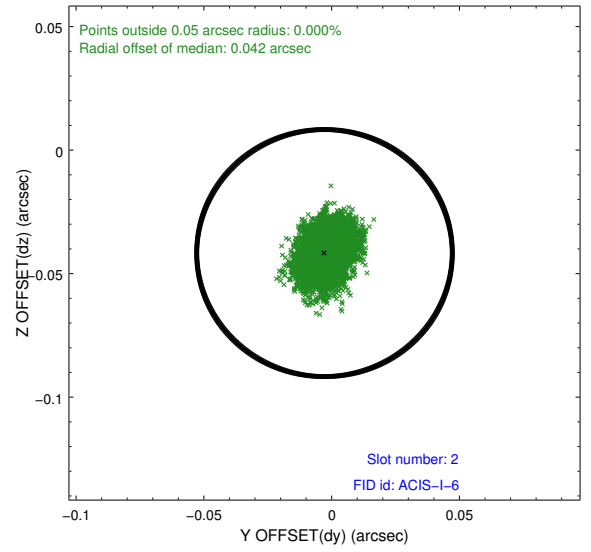
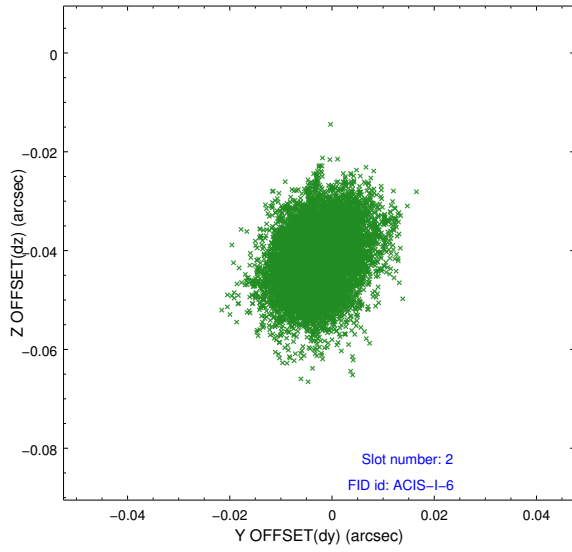
2.5.1 Slot 0



2.5.2 Slot 1



2.5.3 Slot 2



A Summary

A.1 Status

V&V Scientist	Jen Lauer
V&V Date (YYYY-MM-DD)	2012.10.02
V&V Edition	1
V&V Disposition and Status	OK
V&V Charge Time	44.206

A.2 Comments

Two guide stars were not acquired. This did not have an impact on the aspect solution.