

# V&V Reference Report

## L2 ASCDS Version : 8.4.5

Observation 2932 - L2 Version 3  
Chandra X-Ray Center

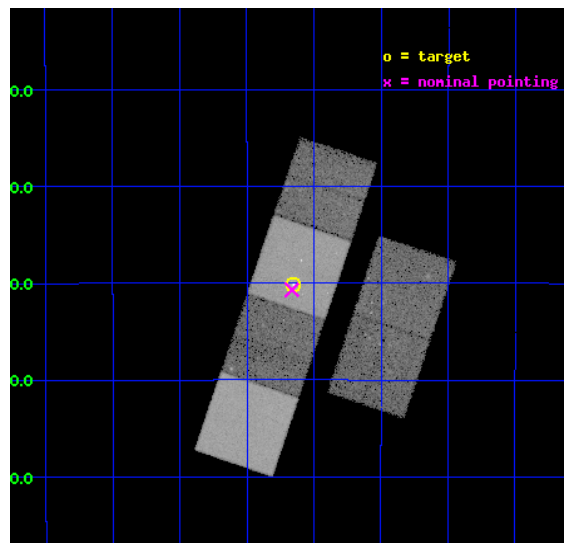
L2 Processing Date : Oct 2 2012

## Contents

<b>1</b>	<b>Front</b>	<b>2</b>
<b>2</b>	<b>OBI</b>	<b>3</b>
2.1	OBI . . . . .	3
2.1.1	Images . . . . .	3
2.1.2	Bias . . . . .	3
2.1.3	Parameters . . . . .	4
2.1.4	Events . . . . .	4
2.2	Compared Parameters . . . . .	5
2.3	Aspect . . . . .	6
2.4	Star Slots . . . . .	9
2.4.1	Slot 3 . . . . .	9
2.4.2	Slot 4 . . . . .	10
2.4.3	Slot 5 . . . . .	11
2.4.4	Slot 6 . . . . .	12
2.4.5	Slot 7 . . . . .	13
2.5	FID Slots . . . . .	14
2.5.1	Slot 0 . . . . .	14
2.5.2	Slot 1 . . . . .	15
2.5.3	Slot 2 . . . . .	16
<b>A</b>	<b>Summary</b>	<b>17</b>
A.1	Status . . . . .	17
A.2	Comments . . . . .	17

# 1 Front

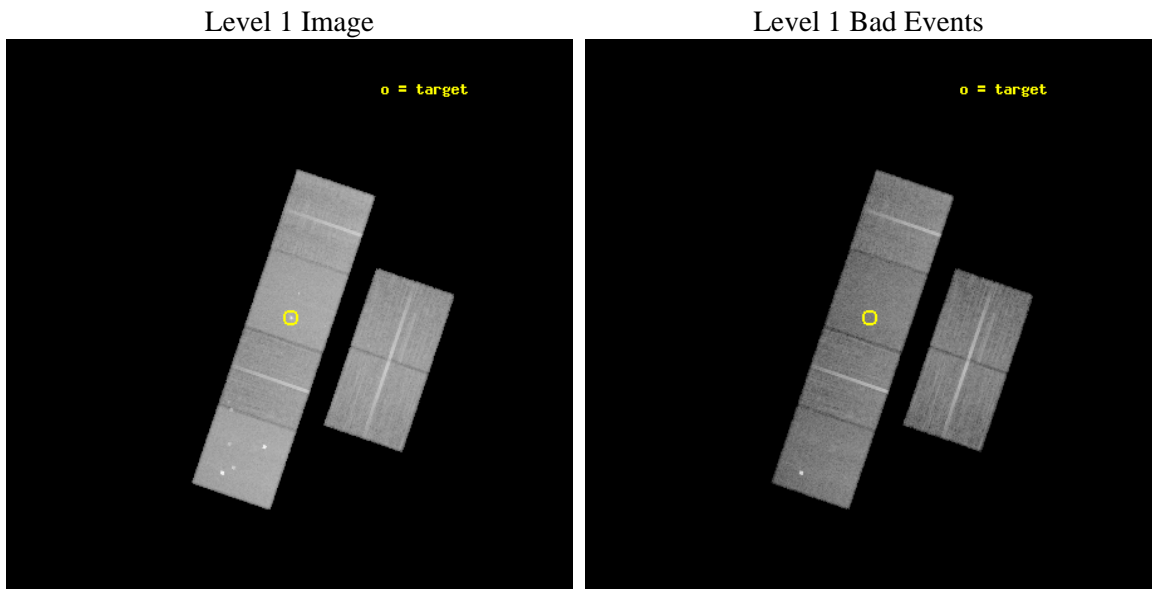
seq_num	600269	Sequence number
obs_id	2932	Observation id
title	RESOLVING THE ORIGIN OF X-RAY EMISSION IN A COMPLETE SAMPLE OF LOCAL STARBURST-DRIVEN SUPERWINDS	Proposal title
observer	Dr David Strickland	Principal investigator
object	NGC 1482	Source name
dtcycle	0	&#160
cycle	P	events from which exps? Prim/Second/Both
ra_targ	58.664583	Observer's specified target RA [deg]
dec_targ	-20.501944	Observer's specified target Dec [deg]
ra_nom	58.666128798626	Nominal RA [deg]
dec_nom	-20.511549114446	Nominal Dec [deg]
roll_nom	288.74518459073	Nominal Roll [deg]
revision	3	Processing version of data
ontime	28556.800026581	Sum of GTIs [s]
livetime	28195.196629804	Livetime [s]
ontime2	28556.800026581	Sum of GTIs [s]
ontime3	28553.559066325	Sum of GTIs [s]
ontime5	28556.800026581	Sum of GTIs [s]
ontime6	28556.800026581	Sum of GTIs [s]
ontime7	28556.800026581	Sum of GTIs [s]
ontime8	28553.559036404	Sum of GTIs [s]
l2events	290278	Number of level 2 events



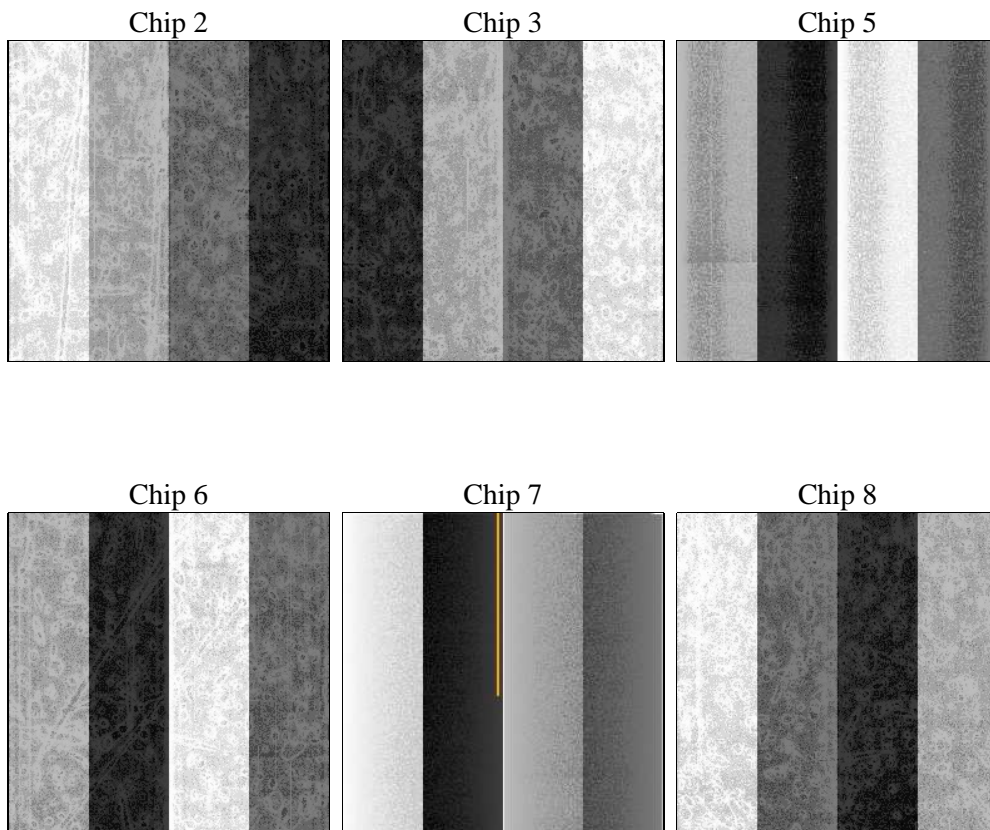
## 2 OBI

### 2.1 OBI

#### 2.1.1 Images



#### 2.1.2 Bias



### 2.1.3 Parameters

obi_num	0	Obi number	sched_exp_time	28600.000000	[s] Scheduled observation exposure time
ascdsver	8.4.5	Processing system revision	ontime	28556.800026581	Sum of GTIs [s]
caldbver	4.5.2	&#160	ontime2	28556.800026581	Sum of GTIs [s]
date	2012-10-02T06:07:35	Date and time of file creation	ontime3	28553.559066325	Sum of GTIs [s]
revision	3	Processing version of data	ontime5	28556.800026581	Sum of GTIs [s]
			ontime6	28556.800026581	Sum of GTIs [s]
			ontime7	28556.800026581	Sum of GTIs [s]
			ontime8	28553.559036404	Sum of GTIs [s]
			l1events	1287130	Number of level 1 events

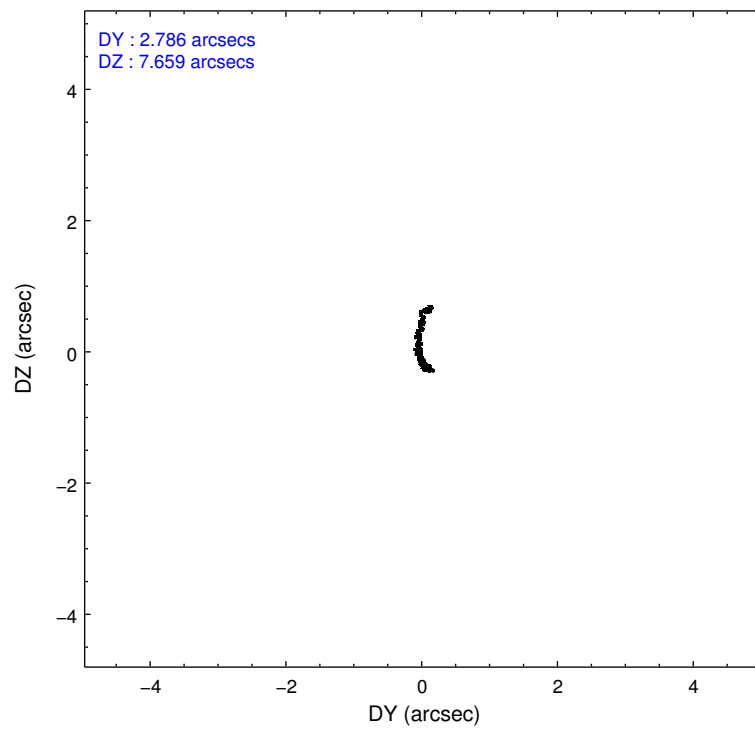
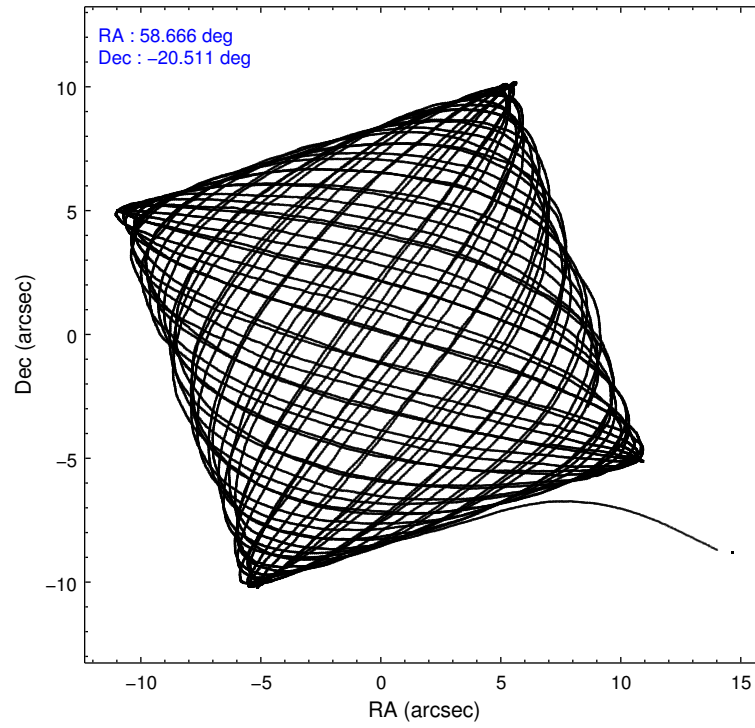
### 2.1.4 Events

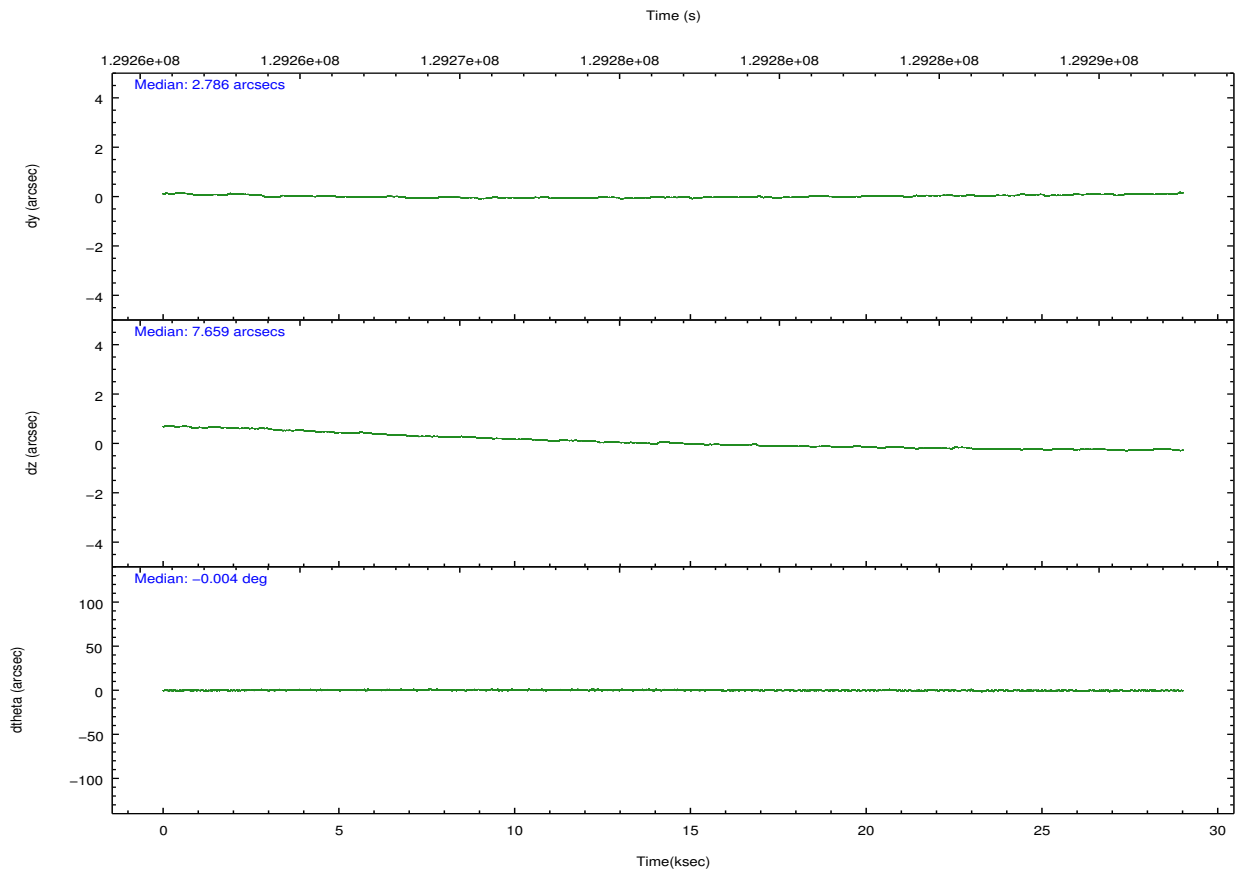
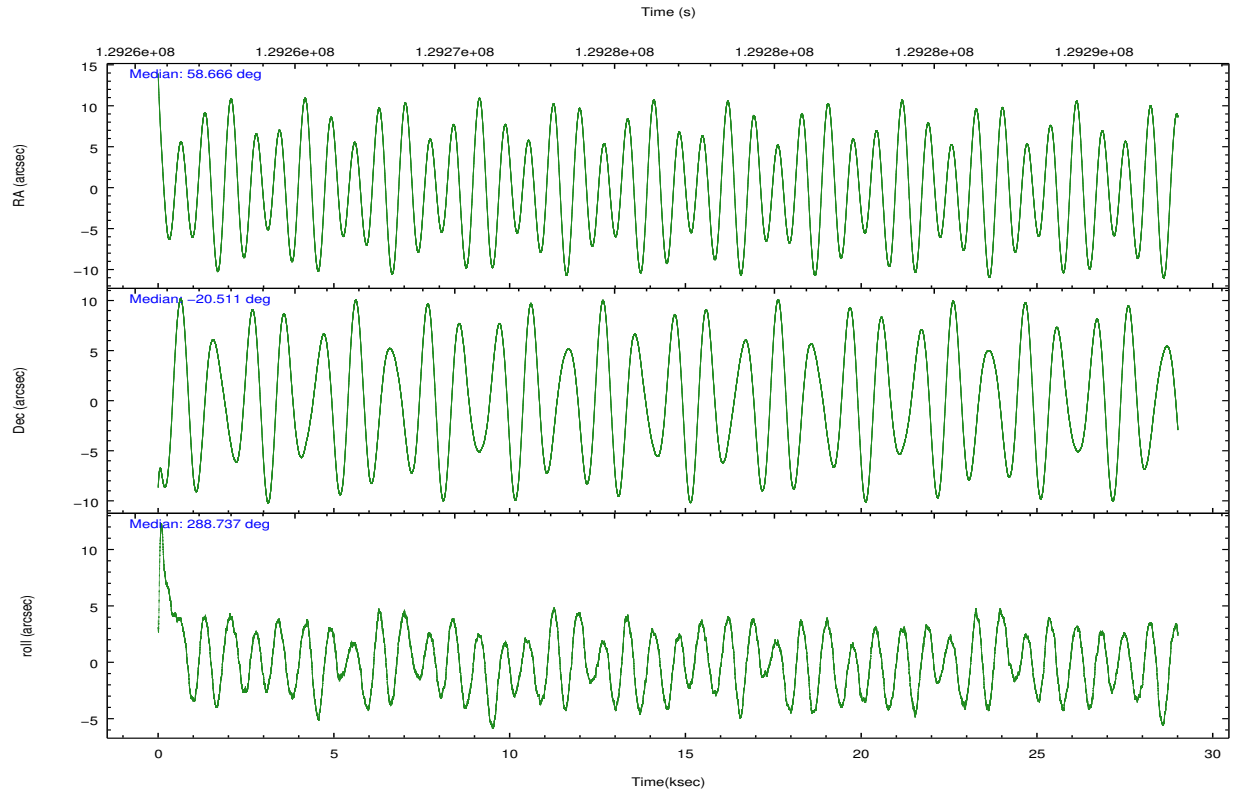
	ccd 2	ccd 3	ccd 5	ccd 6	ccd 7	ccd 8		ccd 2	ccd 3	ccd 5	ccd 6	ccd 7	ccd 8
level 1 events	185238	178089	275090	178941	241853	227919	grade 0 events	8814	8759	18227	8332	11146	14233
rejected events	164626	157594	145592	158211	137584	182313		4%	4%	6%	4%	4%	6%
rejected %	88%	88%	52%	88%	56%	79%	grade 1 events	91	77	344	72	221	140
								0%	0%	0%	0%	0%	0%
							grade 2 events	4460	4096	37912	4177	20771	10071
								2%	2%	13%	2%	8%	4%
							grade 3 events	1911	2073	5156	2002	9427	4793
								1%	1%	1%	1%	3%	2%
							grade 4 events	1890	1875	4969	2019	9292	4519
								1%	1%	1%	1%	3%	1%
							grade 5 events	6384	7164	20239	7643	22279	9874
								3%	4%	7%	4%	9%	4%
							grade 6 events	3540	3696	63248	4202	53645	11996
								1%	2%	22%	2%	22%	5%
							grade 7 events	158148	150349	124995	150494	115072	172293
								85%	84%	45%	84%	47%	75%

## 2.2 Compared Parameters

Parameter	Planned	Actual	Parameter	Planned	Actual
Instrument	ACIS	ACIS	Obspar format version number	7	7
Detector	ACIS-235678	ACIS-235678	Obspar file type	PREDICTED	ACTUAL
Grating	NONE	NONE	Obspar update status	NONE	UPDATED
Data mode	FAINT	FAINT	Number of optional ACIS chips dropped	0	0
Observation mode	POINTING	POINTING	On-chip summing requested	N	N
[deg] Pointing RA	58.644022	58.66612879862626	Subarray requested	NONE	NONE
[deg] Pointing Dec	-20.493830	-20.51154911444566	Alternating exposures requested	N	N
[deg] Pointing Roll	288.580818	288.7451845907271	[s] Primary exposure time	0.000000	3.2
[mm] SIM focus pos	-0.684267	-0.6828225247311905			
[mm] SIM defocus	0	0.001444936568705701			
[mm] SIM translation stage pos	-190.132523	-190.1425803651734			
[mm] SIM translation stage offset	0	0.01005778216563158			
[s] Observation start time (MET)	129262578.184000	129261504.13383			
Observation start date	2002-02-05T02:15:14	2002-02-05T01:58:24			
[s] Observation end time (MET)	129291178.184000	129291934.84756			
Observation end date	2002-02-05T10:11:54	2002-02-05T10:25:34			
Read mode	TIMED	TIMED			

## 2.3 Aspect



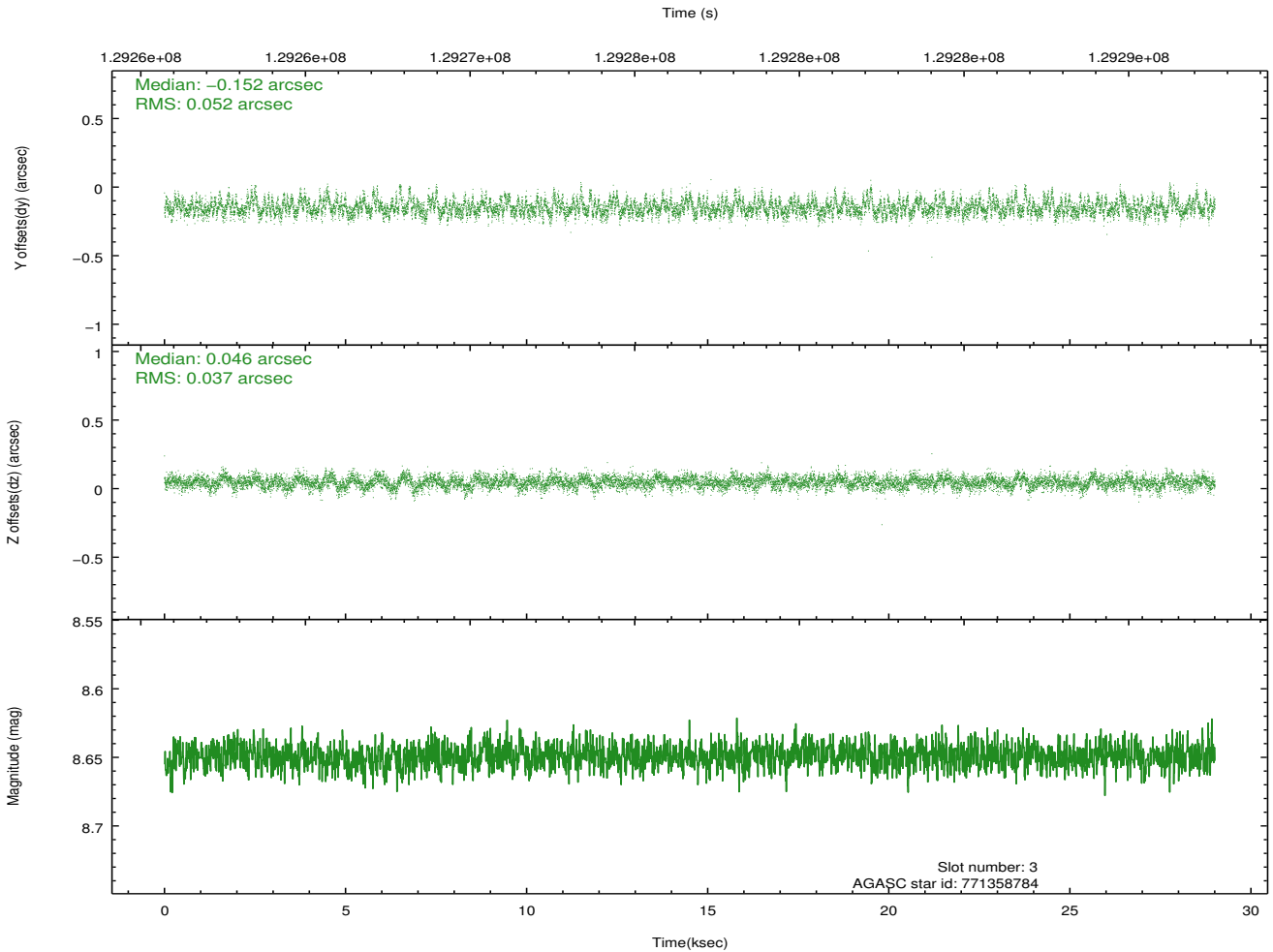
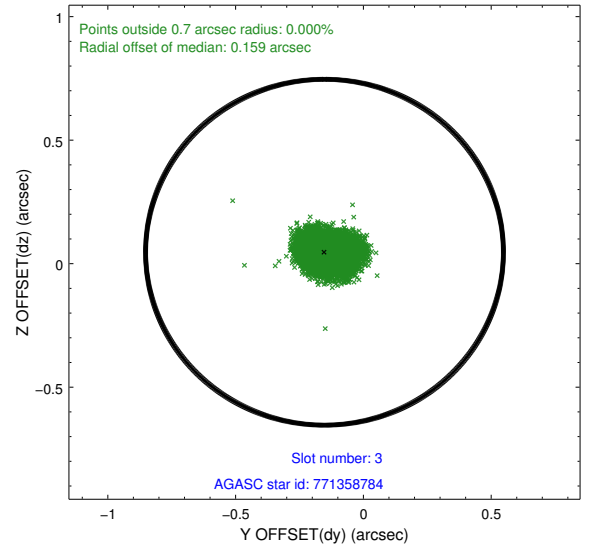
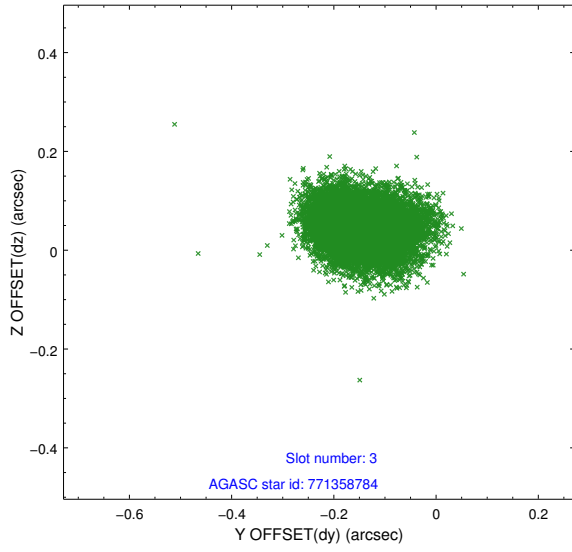


### Slot Statistics

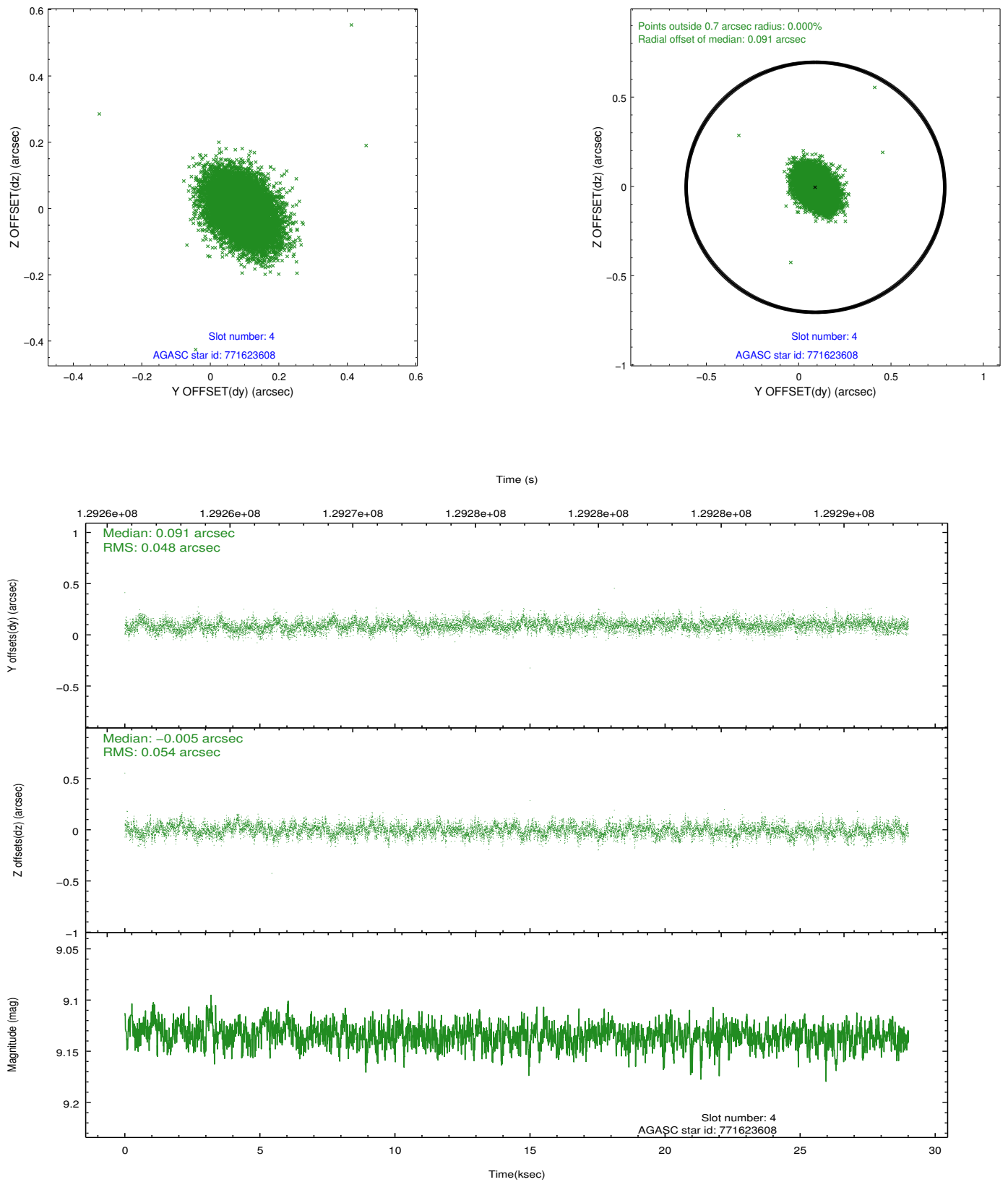
slot	status	id	mag	n_pts	med_dy	med_dz	dr1	dr2	ra	dec	mean_y	mean_z
0	FID	ACIS-S-2	7.11	7076	-0.004	0.004	0.008	0.013	0.000000	0.000000	-755.44	-1728.87
1	FID	ACIS-S-4	7.20	7075	-0.047	0.001	0.006	0.011	0.000000	0.000000	2157.76	179.53
2	FID	ACIS-S-5	7.24	7076	0.020	0.004	0.008	0.013	0.000000	0.000000	-1808.15	173.30
3	GUIDE	771358784	8.65	14146	-0.152	0.046	0.067	0.112	58.723282	-19.962694	-1726.43	863.57
4	GUIDE	771623608	9.13	14147	0.091	-0.005	0.076	0.128	58.376532	-21.013422	1488.20	-1447.76
5	GUIDE	771627200	9.26	14143	-0.041	-0.014	0.085	0.144	58.158773	-20.824384	611.12	-1927.38
6	GUIDE	771367232	8.93	14149	-0.101	-0.019	0.089	0.145	58.692643	-19.811430	-2275.51	938.85
7	GUIDE	771755200	9.95	14088	0.201	-0.012	0.103	0.169	59.058353	-20.802643	1500.41	967.46

## 2.4 Star Slots

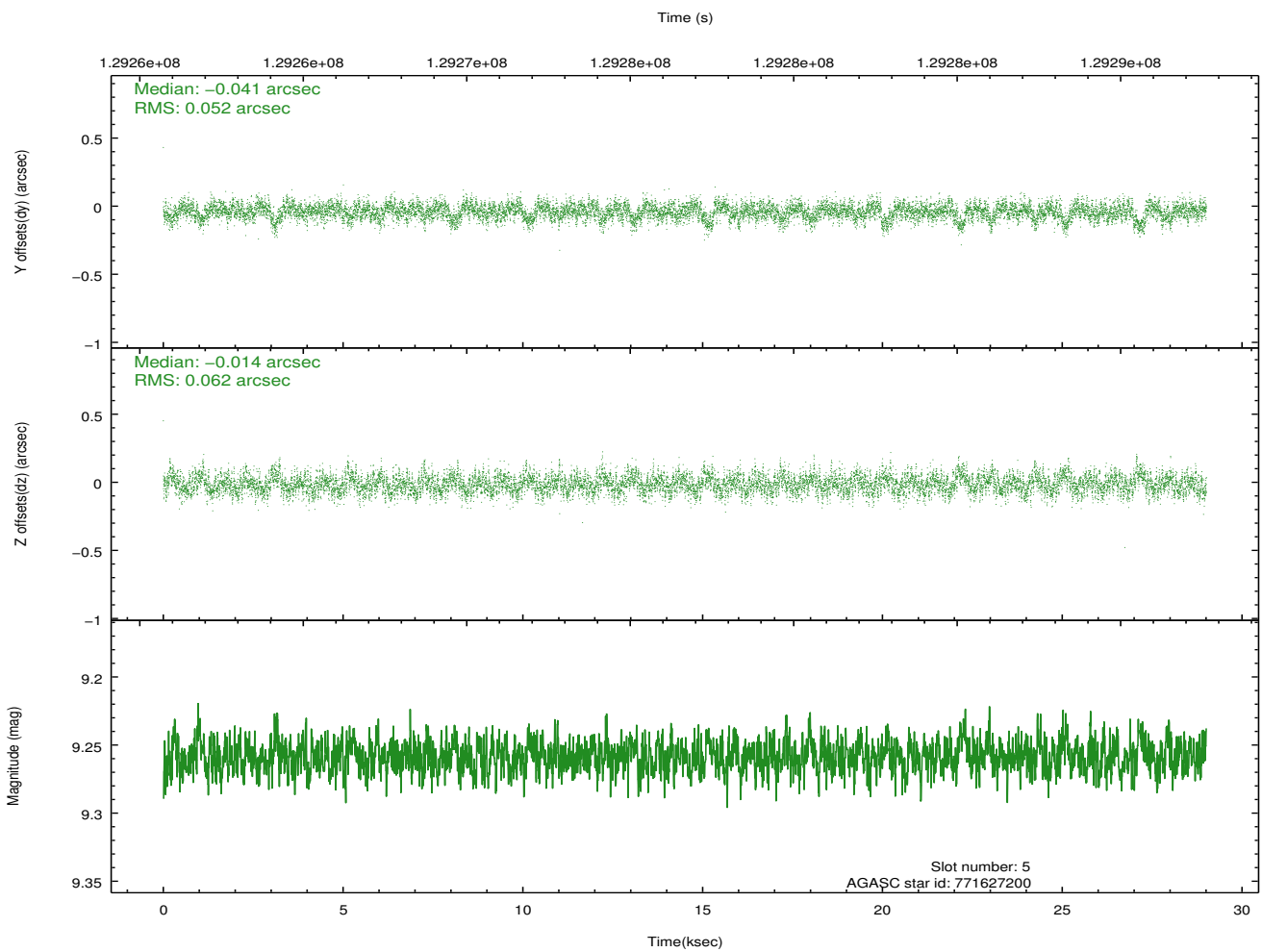
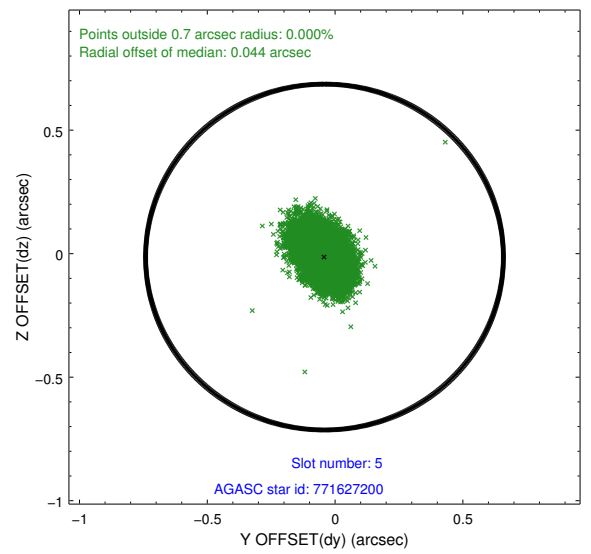
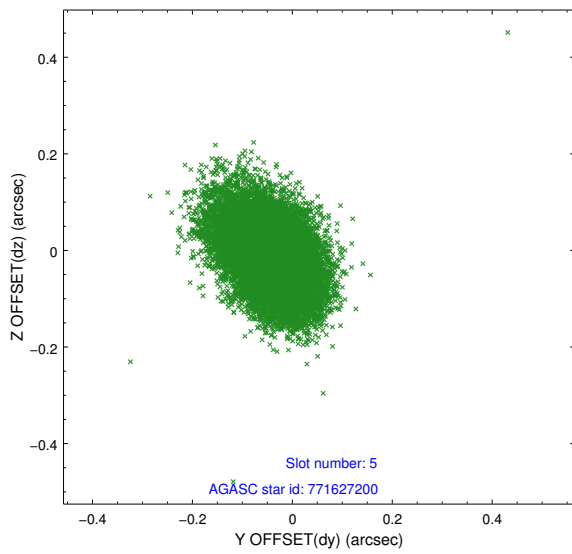
### 2.4.1 Slot 3



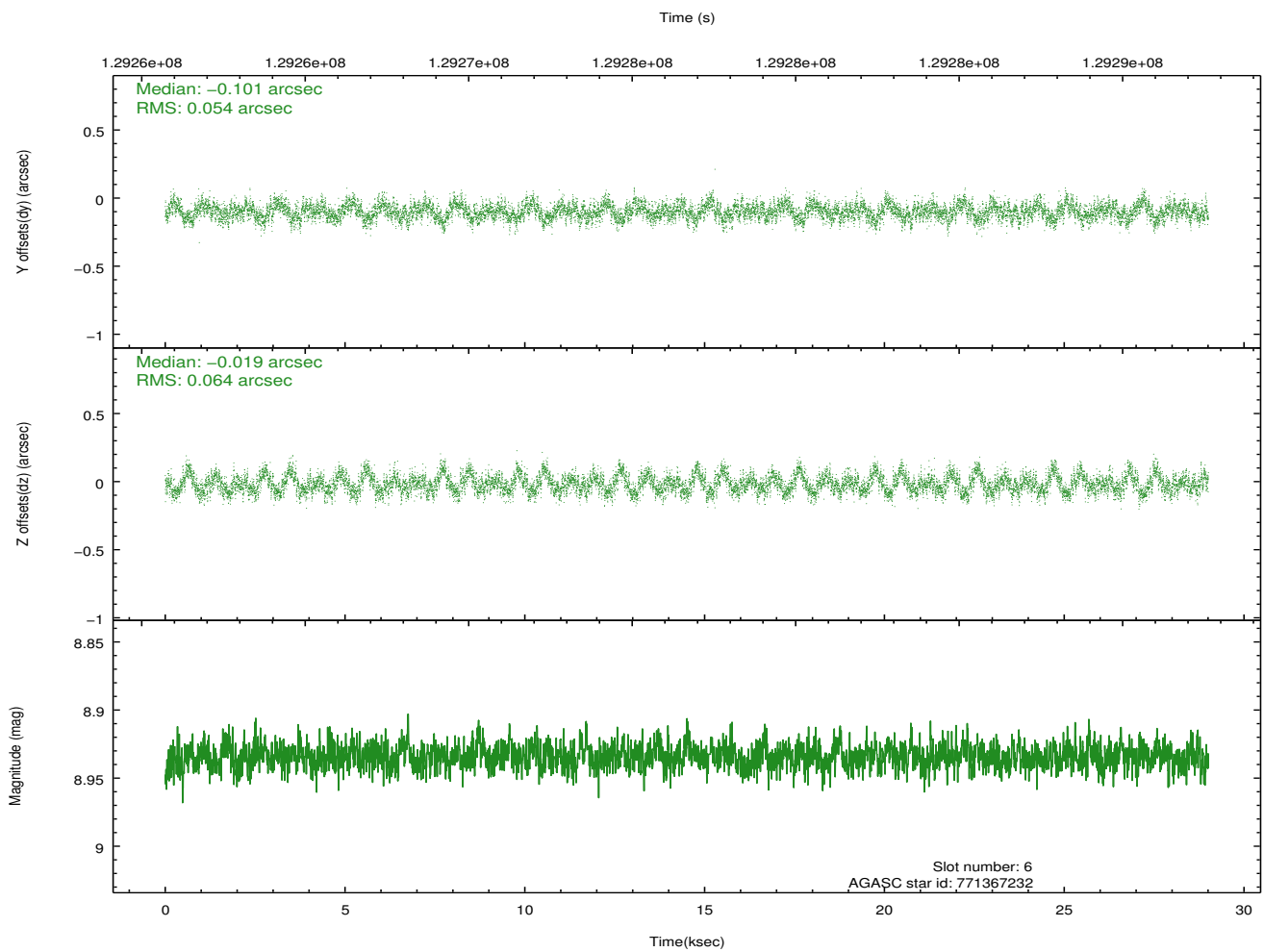
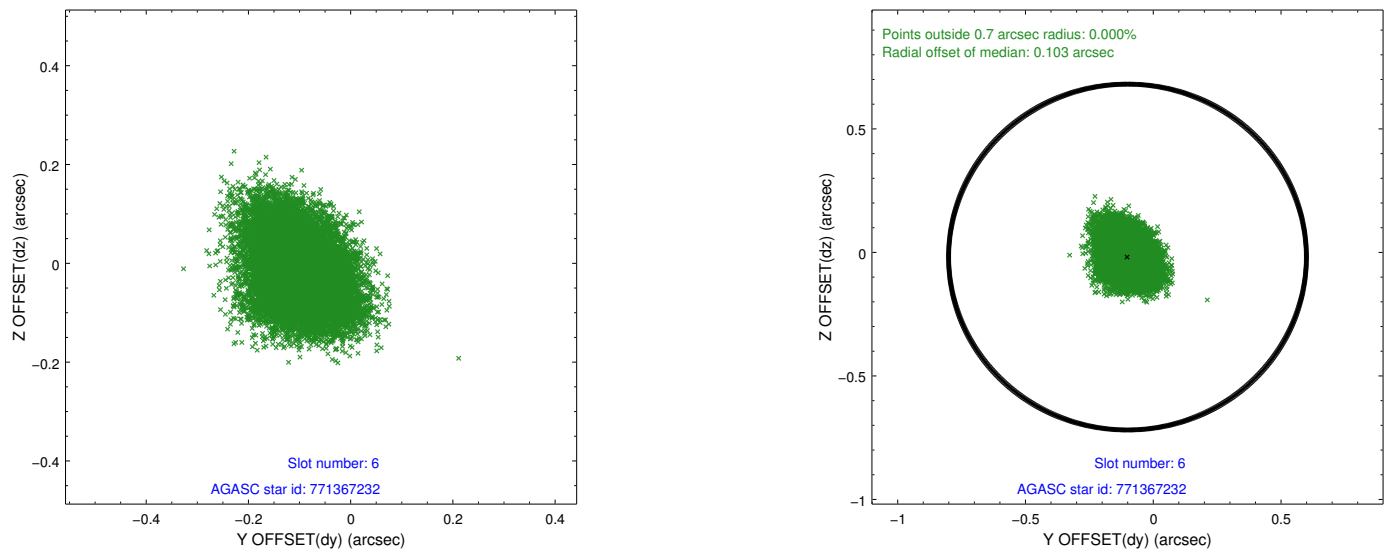
## 2.4.2 Slot 4



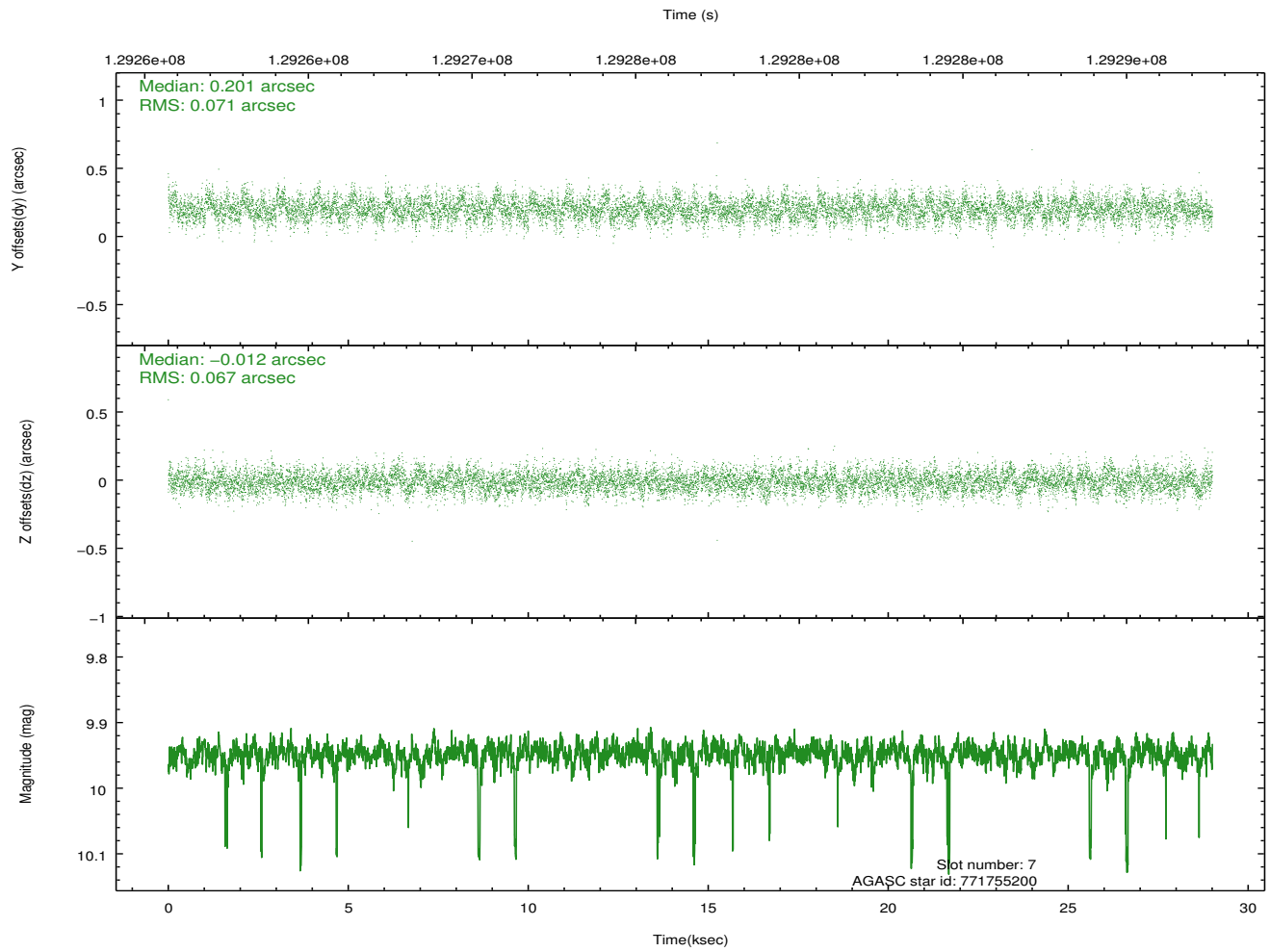
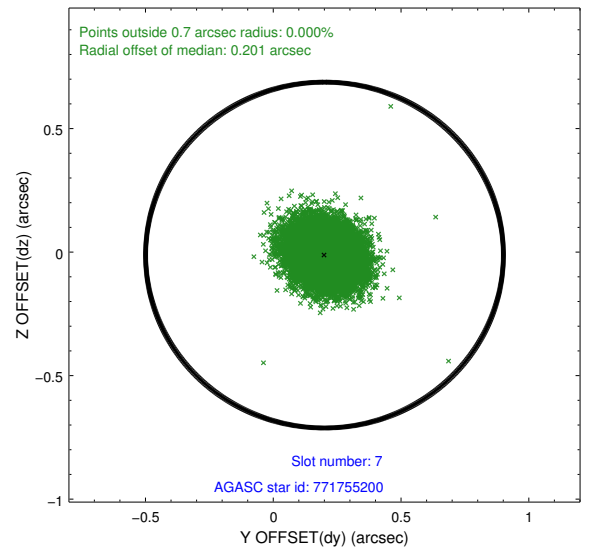
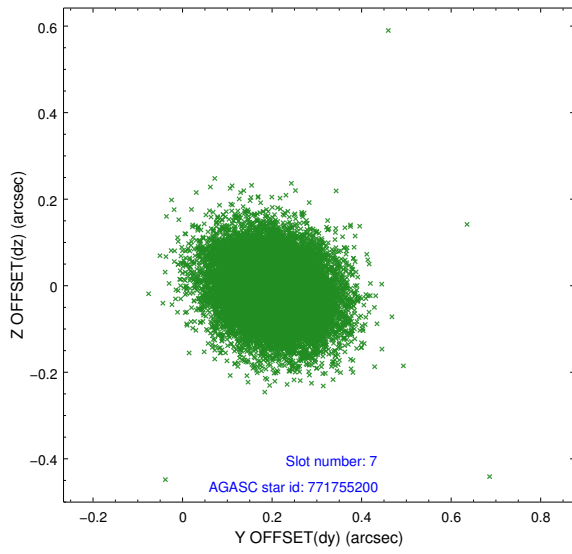
### 2.4.3 Slot 5



## 2.4.4 Slot 6

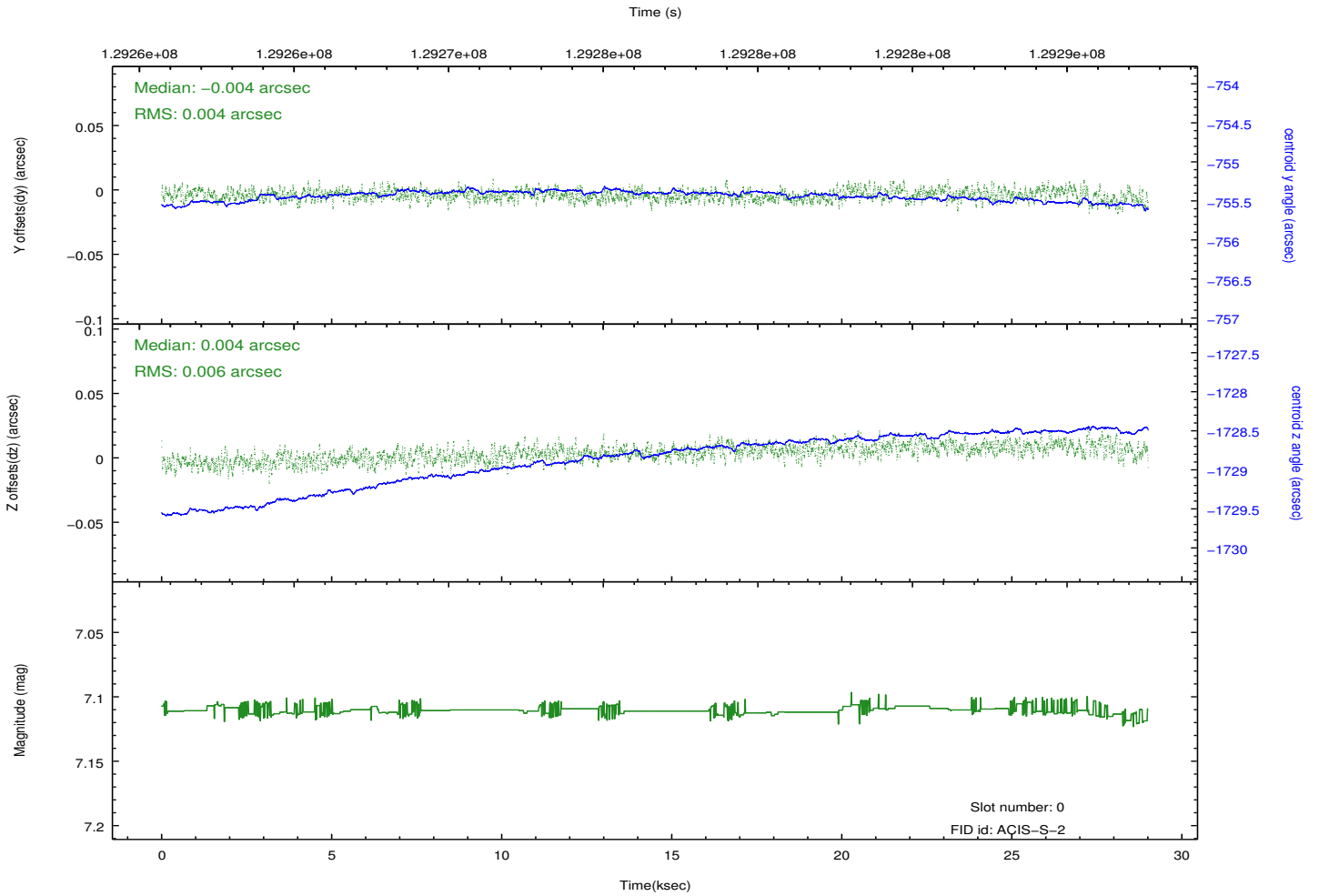
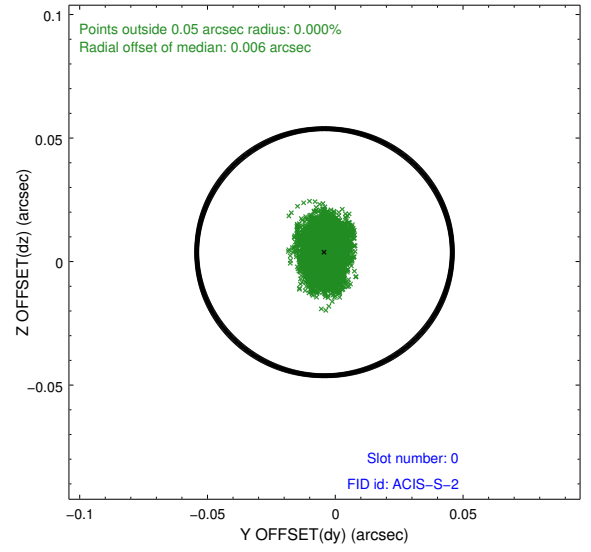
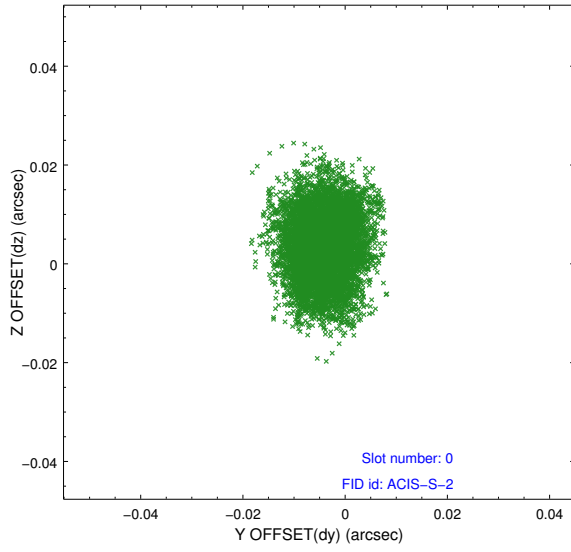


## 2.4.5 Slot 7

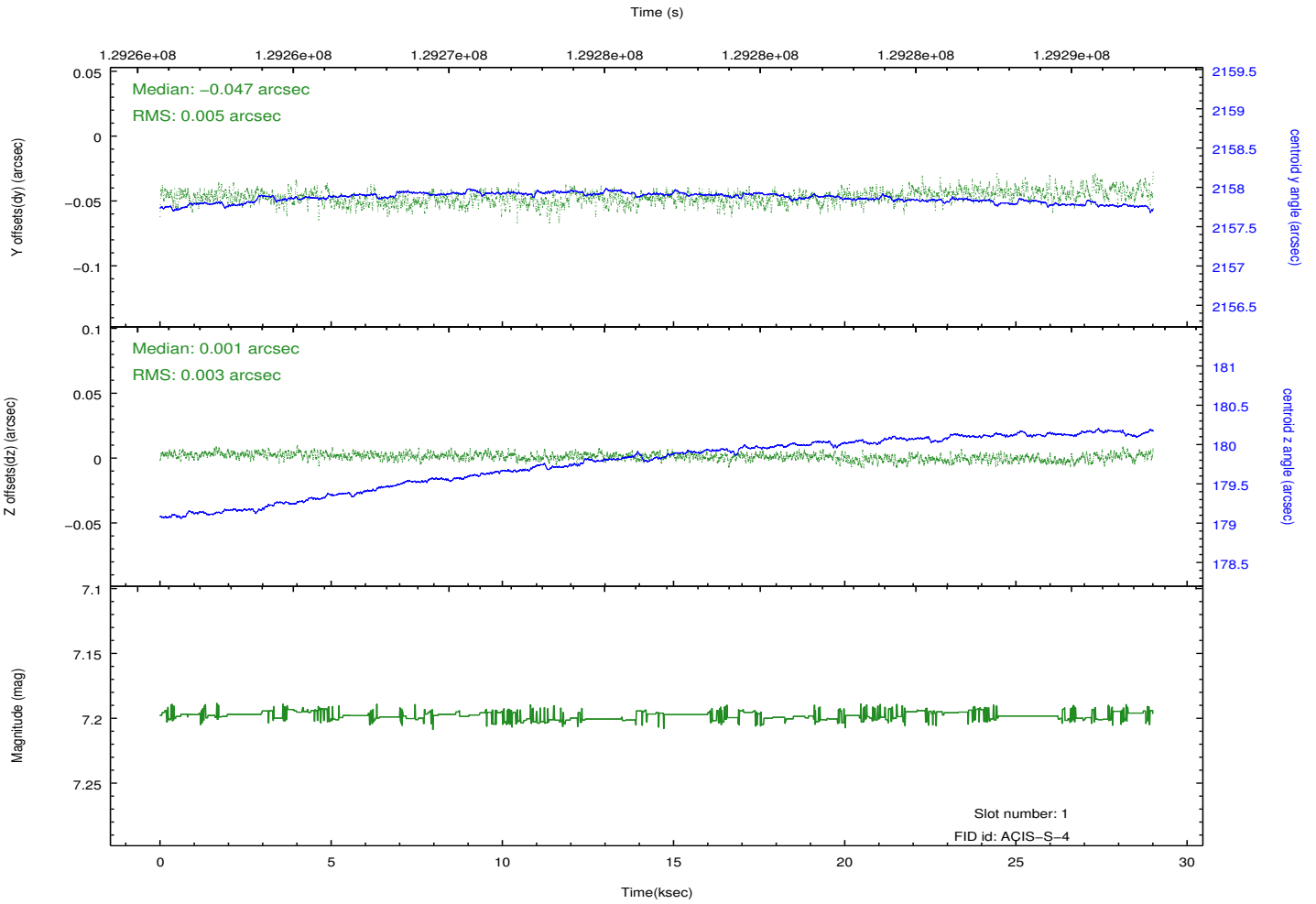
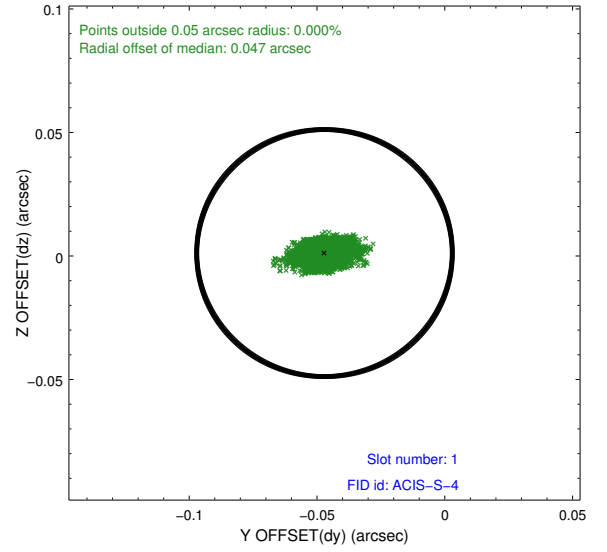
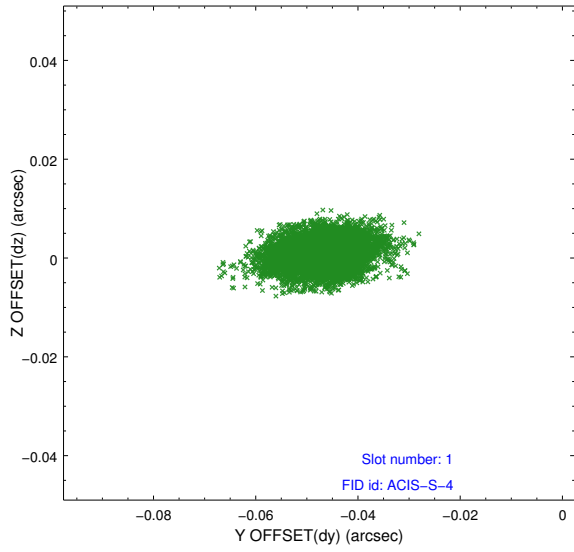


## 2.5 FID Slots

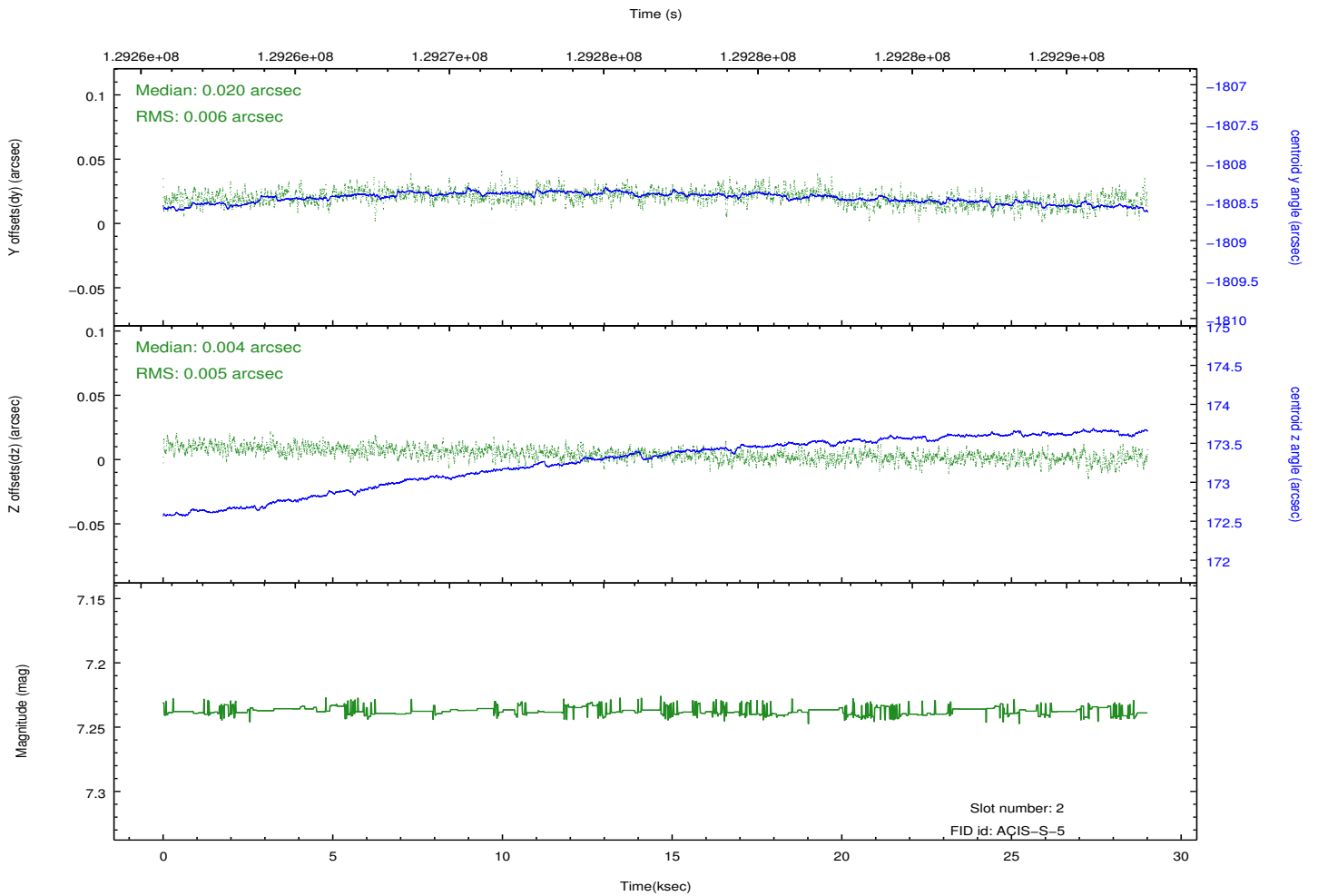
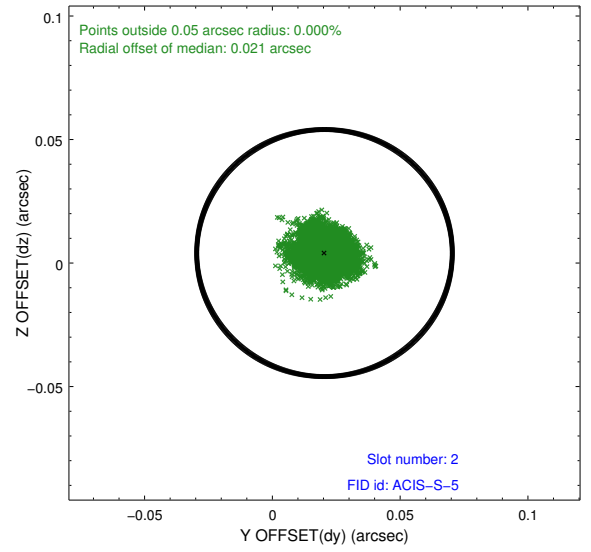
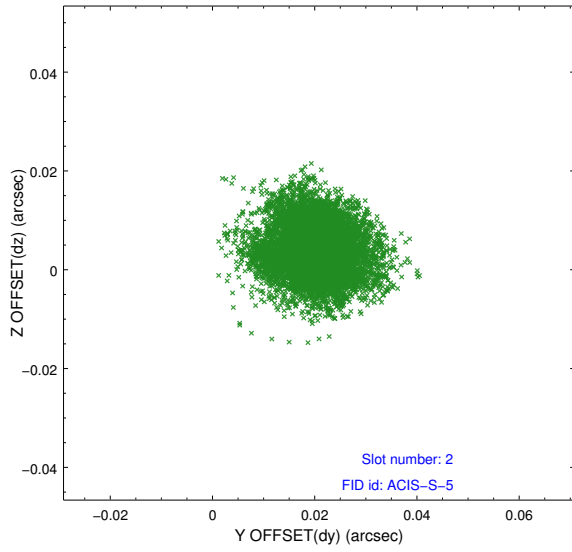
### 2.5.1 Slot 0



## 2.5.2 Slot 1



### 2.5.3 Slot 2



## A Summary

### A.1 Status

V&V Scientist	Jen Lauer
V&V Date (YYYY-MM-DD)	2012.10.03
V&V Edition	1
V&V Disposition and Status	OK
V&V Charge Time	28.56

### A.2 Comments