

V&V Reference Report

L2 ASCDS Version : 8.4.5

Observation 3242 - L2 Version 3
Chandra X-Ray Center

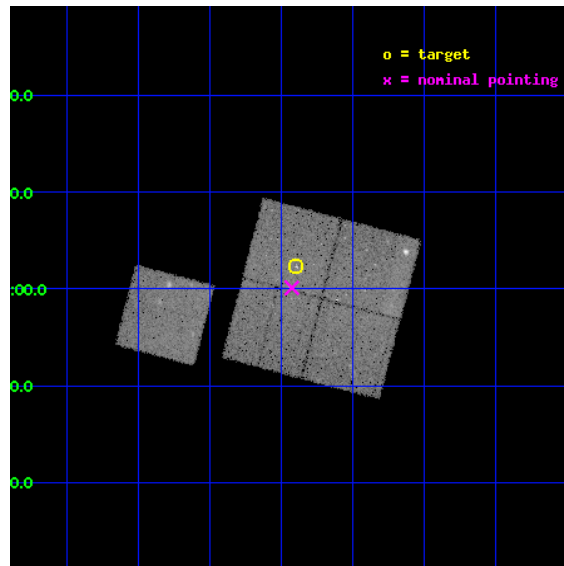
L2 Processing Date : Oct 2 2012

Contents

1	Front	2
2	OBI	3
2.1	OBI	3
2.1.1	Images	3
2.1.2	Bias	3
2.1.3	Parameters	4
2.1.4	Events	4
2.2	Compared Parameters	5
2.3	Aspect	6
2.4	Star Slots	9
2.4.1	Slot 3	9
2.4.2	Slot 4	10
2.4.3	Slot 5	11
2.4.4	Slot 6	12
2.4.5	Slot 7	13
2.5	FID Slots	14
2.5.1	Slot 0	14
2.5.2	Slot 1	15
2.5.3	Slot 2	16
A	Summary	17
A.1	Status	17
A.2	Comments	17

1 Front

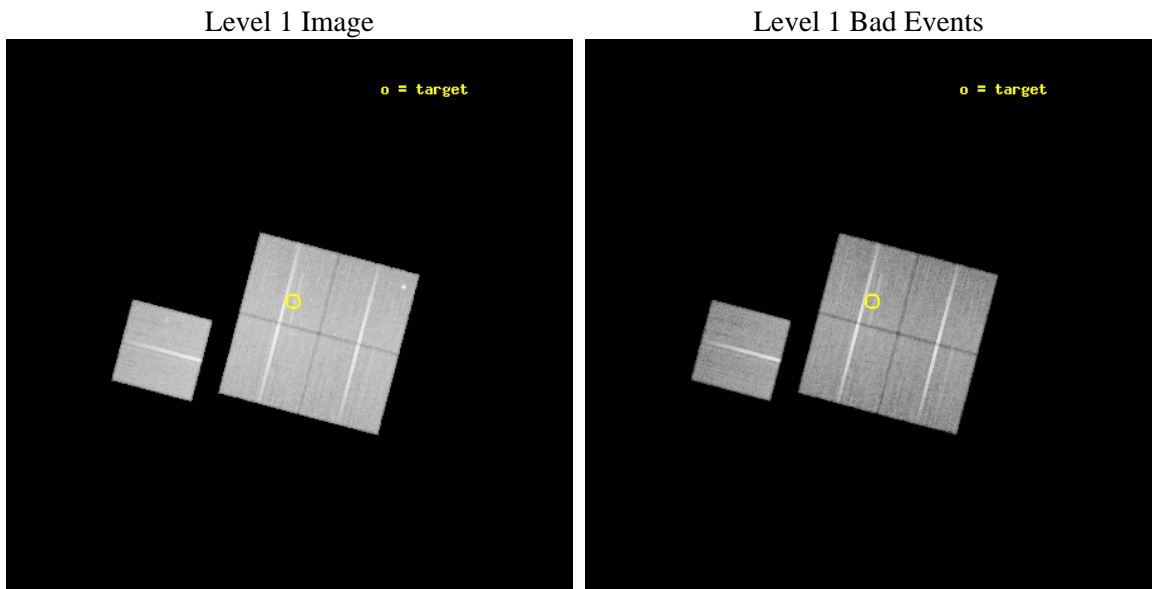
seq_num	800242	Sequence number
obs_id	3242	Observation id
title	CHANDRA OBSERVATIONS OF A GALAXY CLUSTER AT Z=1.11	Proposal title
observer	Daniel Stern	Principal investigator
object	CL 0442+0202	Source name
dtcycle	0	
cycle	P	events from which exps? Prim/Second/Both
ra_targ	70.59875	Observer's specified target RA [deg]
dec_targ	2.038833	Observer's specified target Dec [deg]
ra_nom	70.606460116657	Nominal RA [deg]
dec_nom	2.0019358153539	Nominal Dec [deg]
roll_nom	284.76253749178	Nominal Roll [deg]
revision	3	Processing version of data
ontime	44209.01793465	Sum of GTIs [s]
livetime	43631.394569128	Livetime [s]
ontime0	44199.595123649	Sum of GTIs [s]
ontime1	44205.877004296	Sum of GTIs [s]
ontime2	44193.313113362	Sum of GTIs [s]
ontime3	44209.01793465	Sum of GTIs [s]
ontime6	44209.017974555	Sum of GTIs [s]
l2events	105577	Number of level 2 events



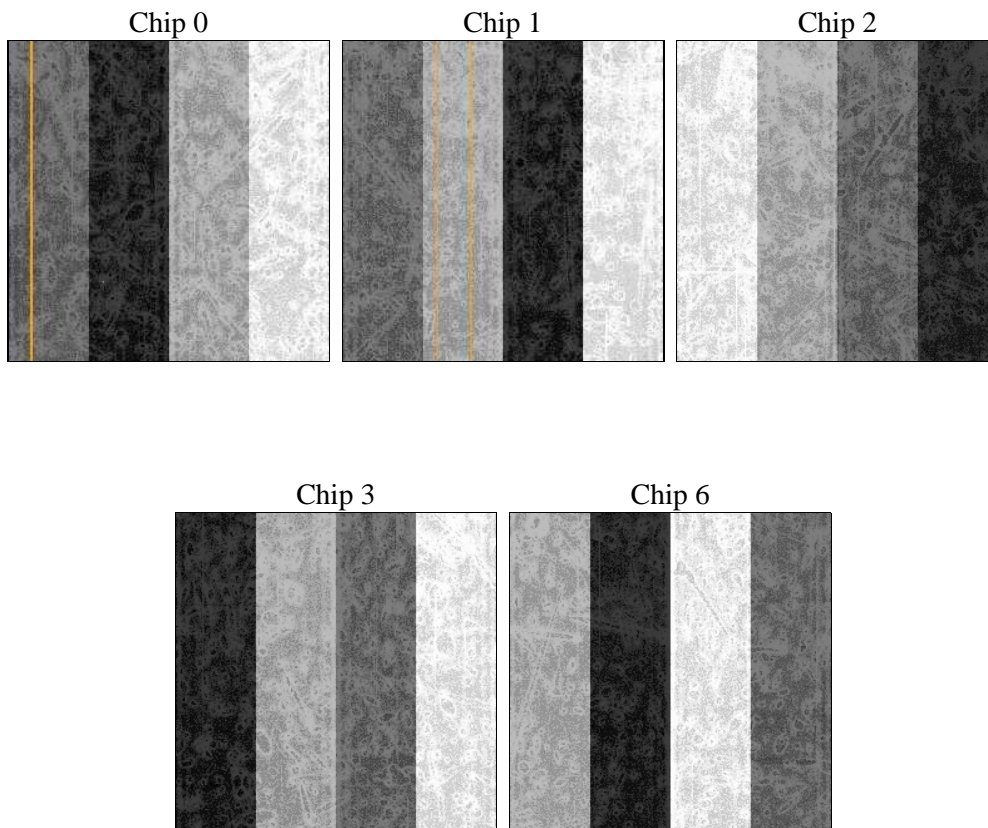
2 OBI

2.1 OBI

2.1.1 Images



2.1.2 Bias



2.1.3 Parameters

obi_num	0	Obi number	sched_exp_time	44100.000000	[s] Scheduled observation exposure time
ascdsver	8.4.5	Processing system revision	ontime	44209.01793465	Sum of GTIs [s]
caldbver	4.5.2	 	ontime0	44199.595123649	Sum of GTIs [s]
date	2012-10-02T07:09:09	Date and time of file creation	ontime1	44205.877004296	Sum of GTIs [s]
revision	3	Processing version of data	ontime2	44193.313113362	Sum of GTIs [s]
			ontime3	44209.01793465	Sum of GTIs [s]
			ontime6	44209.017974555	Sum of GTIs [s]
			l1events	1254239	Number of level 1 events

2.1.4 Events

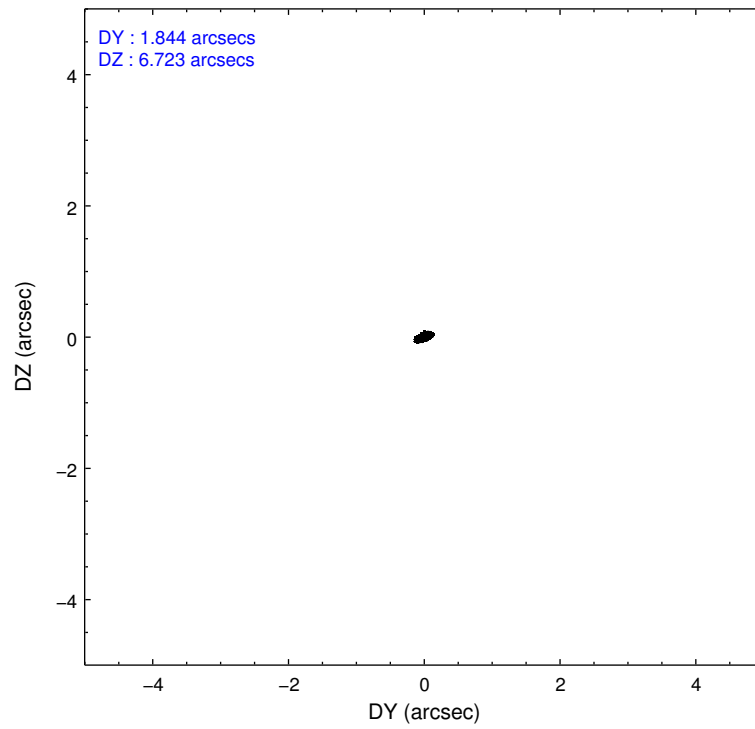
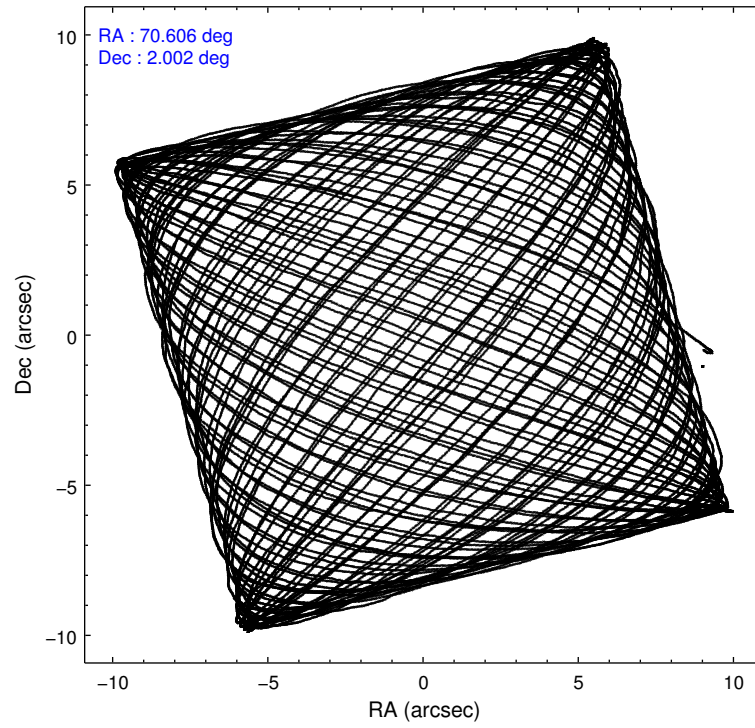
	ccd 0	ccd 1	ccd 2	ccd 3	ccd 6
level 1 events	238368	239057	268989	253488	254337
rejected events	214178	208961	245261	229839	228425
rejected %	89%	87%	91%	90%	89%

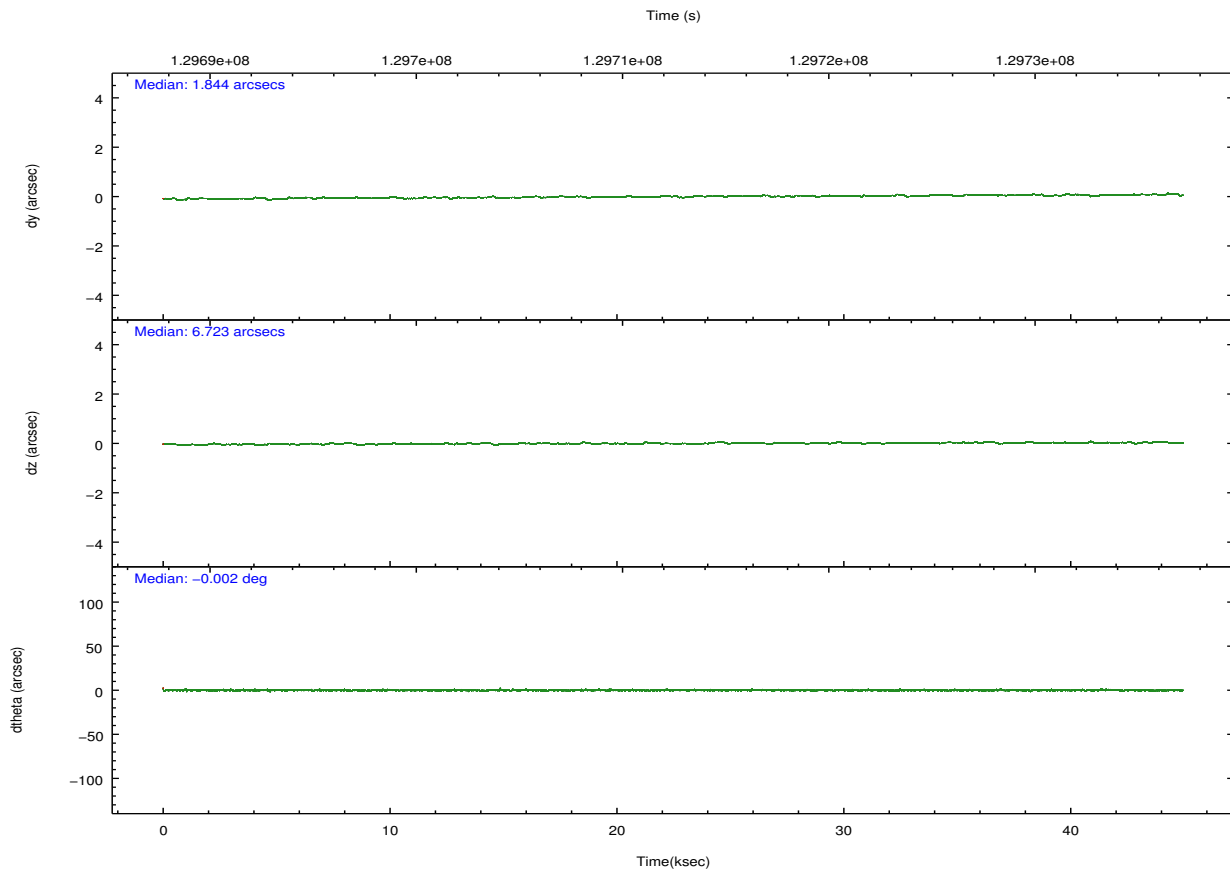
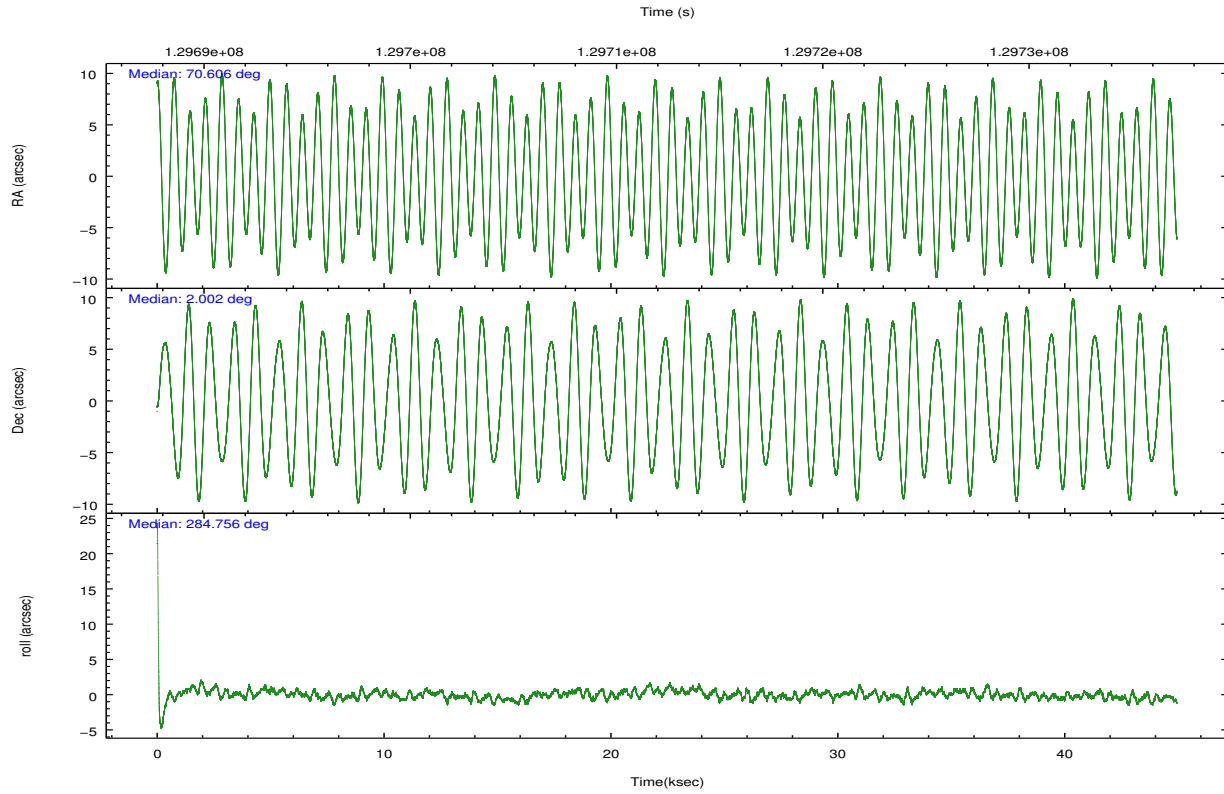
	ccd 0	ccd 1	ccd 2	ccd 3	ccd 6
grade 0 events	8347	12540	8417	8600	9661
	3%	5%	3%	3%	3%
grade 1 events	106	121	103	101	123
	0%	0%	0%	0%	0%
grade 2 events	5651	5889	5438	4984	5211
	2%	2%	2%	1%	2%
grade 3 events	2905	3379	2694	2679	2988
	1%	1%	1%	1%	1%
grade 4 events	2651	3064	2617	2620	2856
	1%	1%	0%	1%	1%
grade 5 events	8052	9004	7708	8904	9205
	3%	3%	2%	3%	3%
grade 6 events	4644	5231	4567	4772	5199
	1%	2%	1%	1%	2%
grade 7 events	206012	199829	237445	220828	219094
	86%	83%	88%	87%	86%

2.2 Compared Parameters

Parameter	Planned	Actual	Parameter	Planned	Actual
Instrument	ACIS	ACIS	Obspar format version number	7	7
Detector	ACIS-01236	ACIS-01236	Obspar file type	PREDICTED	ACTUAL
Grating	NONE	NONE	Obspar update status	NONE	UPDATED
Data mode	VFAINT	VFAINT	Number of optional ACIS chips dropped	0	0
Observation mode	POINTING	POINTING	On-chip summing requested	N	N
[deg] Pointing RA	70.587100	70.60646011665666	Subarray requested	NONE	NONE
[deg] Pointing Dec	2.021342	2.00193581535387	Alternating exposures requested	N	N
[deg] Pointing Roll	284.554517	284.7625374917752	[s] Primary exposure time	0.000000	3.1
[mm] SIM focus pos	-0.782348	-0.7809083437167272			
[mm] SIM defocus	0	0.001439871863259334			
[mm] SIM translation stage pos	-225.592463	-225.5843688559632			
[mm] SIM translation stage offset	-8	-8.008084146966468			
[s] Observation start time (MET)	129690821.184000	129689532.87611			
Observation start date	2002-02-10T01:12:37	2002-02-10T00:52:12			
[s] Observation end time (MET)	129734921.184000	129735357.55296			
Observation end date	2002-02-10T13:27:37	2002-02-10T13:35:57			
Read mode	TIMED	TIMED			

2.3 Aspect



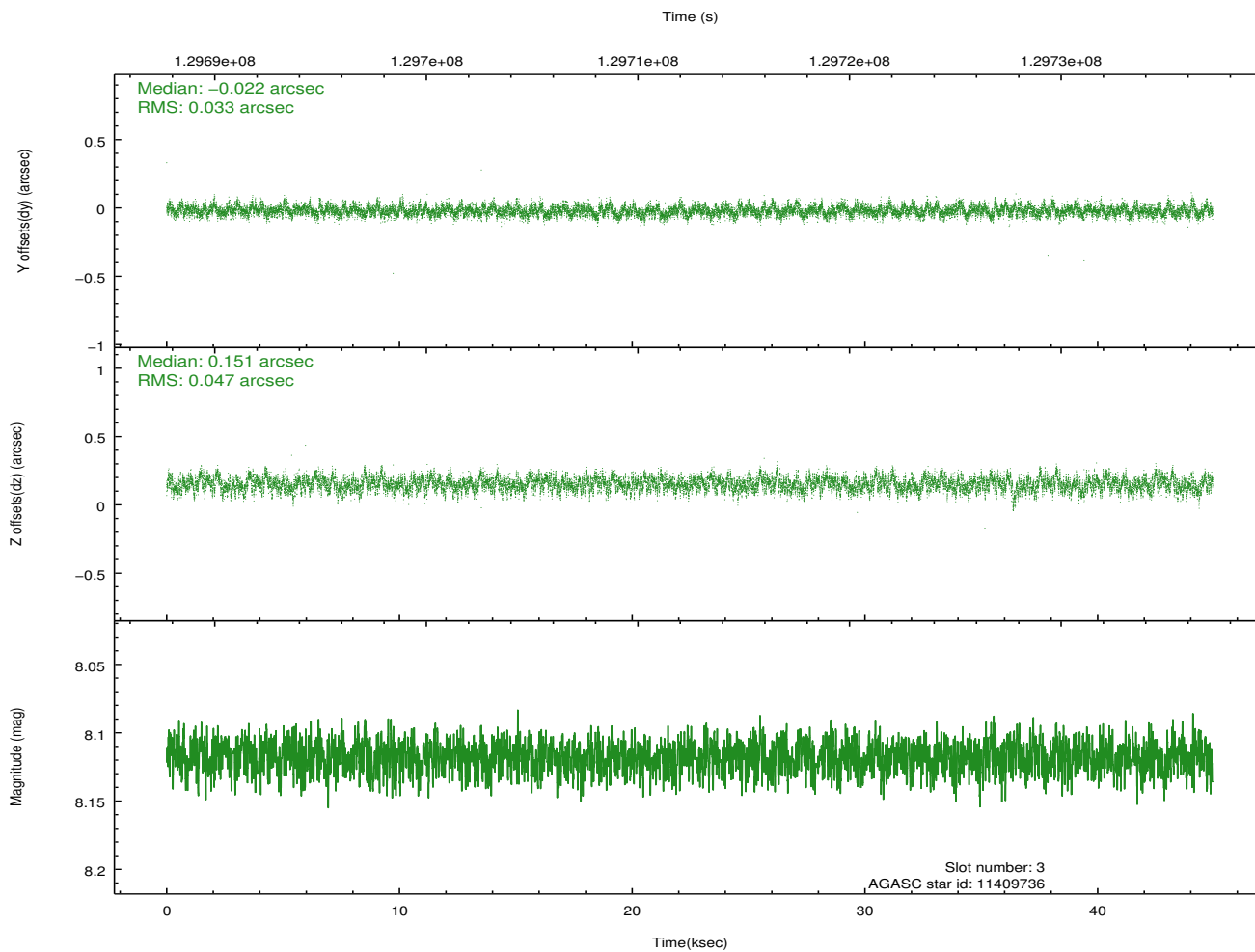
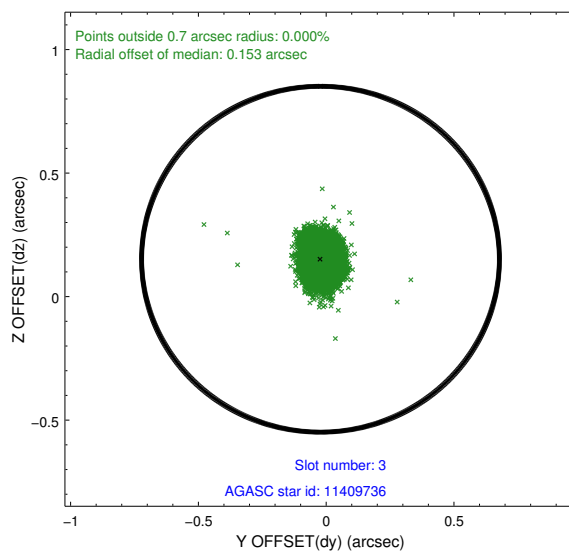
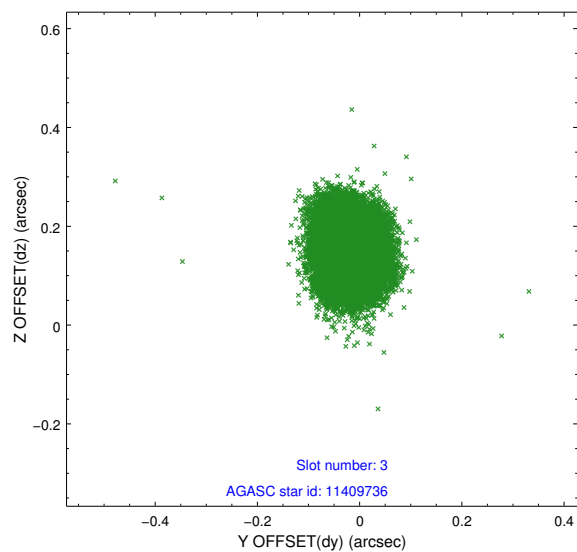


Slot Statistics

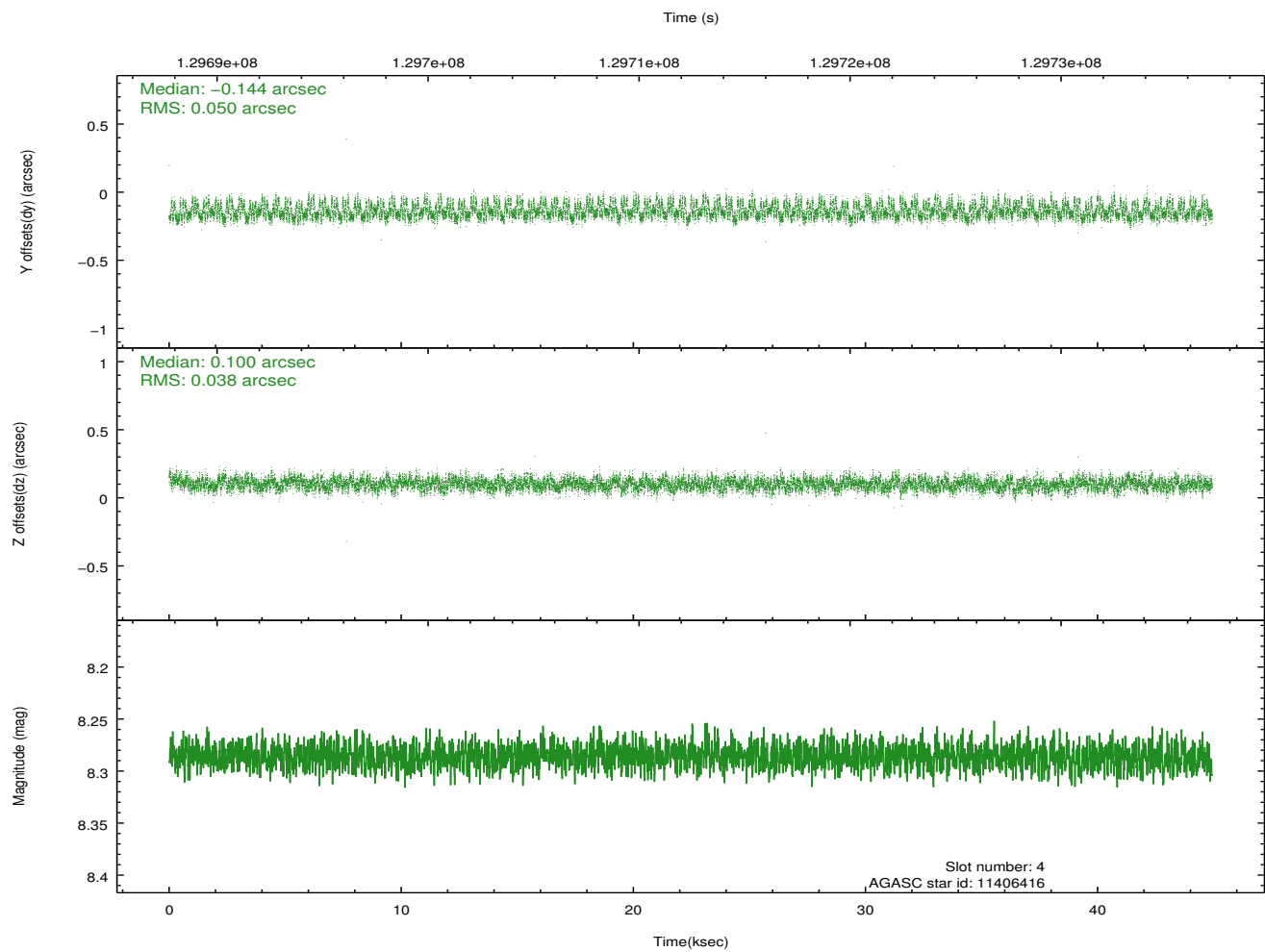
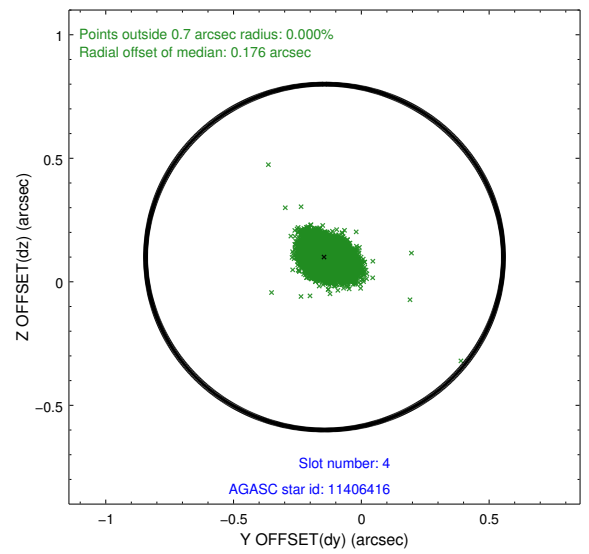
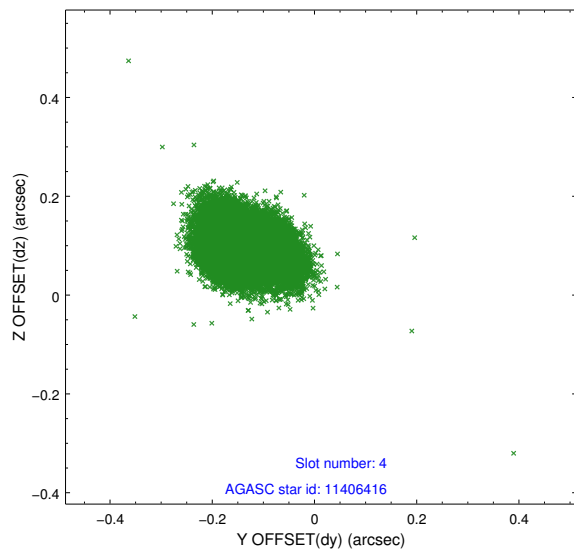
slot	status	id	mag	n_pts	med_dy	med_dz	dr1	dr2	ra	dec	mean_y	mean_z
0	FID	ACIS-I-1	7.23	10963	0.057	-0.184	0.006	0.011	0.000000	0.000000	937.89	-994.69
1	FID	ACIS-I-3	7.43	10963	-0.016	0.227	0.007	0.012	0.000000	0.000000	55.32	-1127.60
2	FID	ACIS-I-5	7.22	10960	-0.131	0.029	0.006	0.011	0.000000	0.000000	-1810.48	902.99
3	GUIDE	11409736	8.12	21920	-0.022	0.151	0.061	0.099	71.030592	2.025050	388.36	1547.73
4	GUIDE	11406416	8.29	21922	-0.144	0.100	0.066	0.106	71.049487	2.408805	-932.06	1960.19
5	GUIDE	11408192	8.29	21921	-0.177	0.065	0.062	0.098	70.240213	2.505651	-2000.65	-769.76
6	GUIDE	10885152	8.52	21919	0.089	-0.035	0.075	0.118	70.435040	1.287417	2420.65	-1193.80
7	GUIDE	10883784	9.40	21847	0.254	-0.280	0.101	0.171	70.085528	1.238284	2276.07	-2456.16

2.4 Star Slots

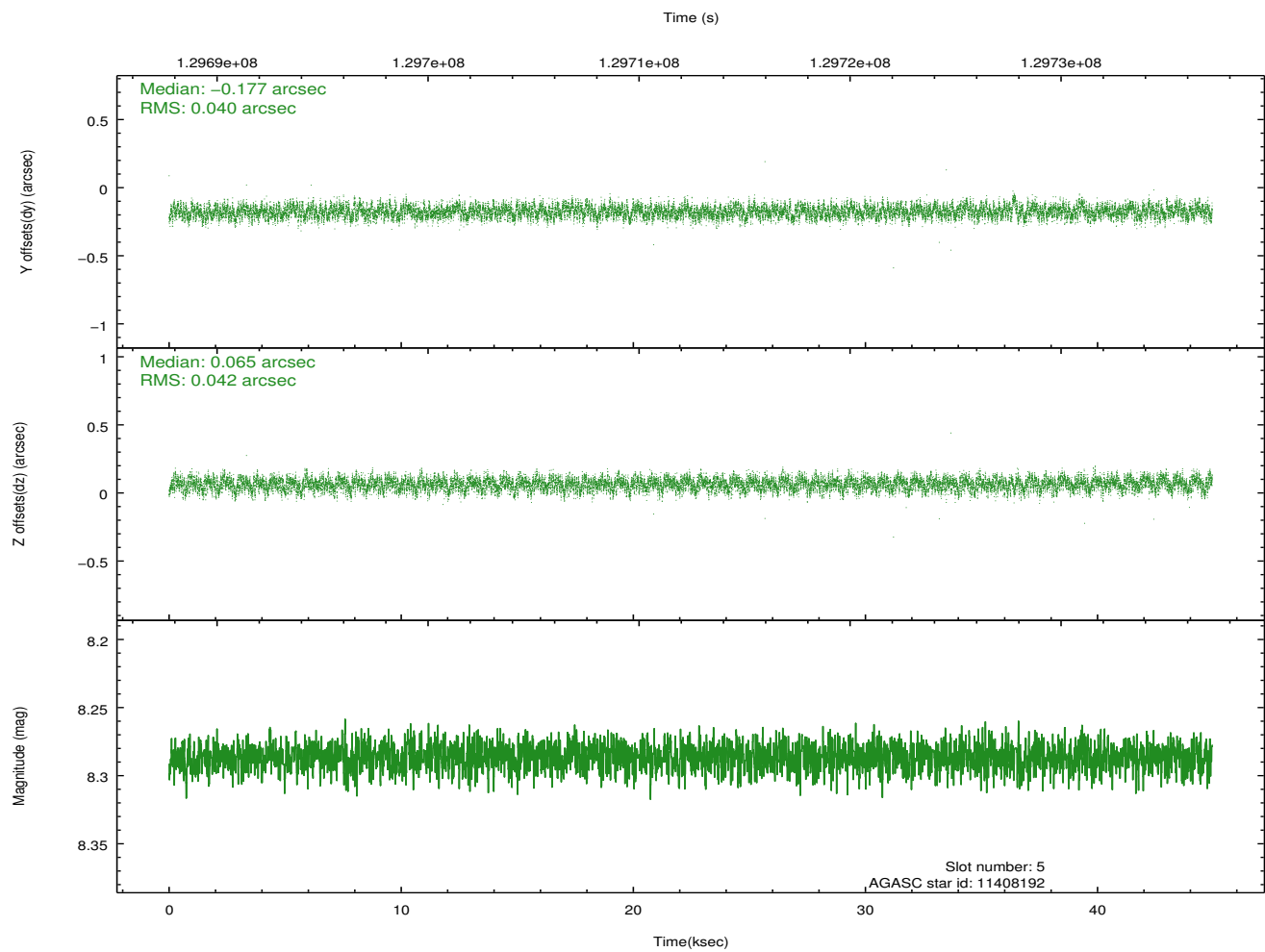
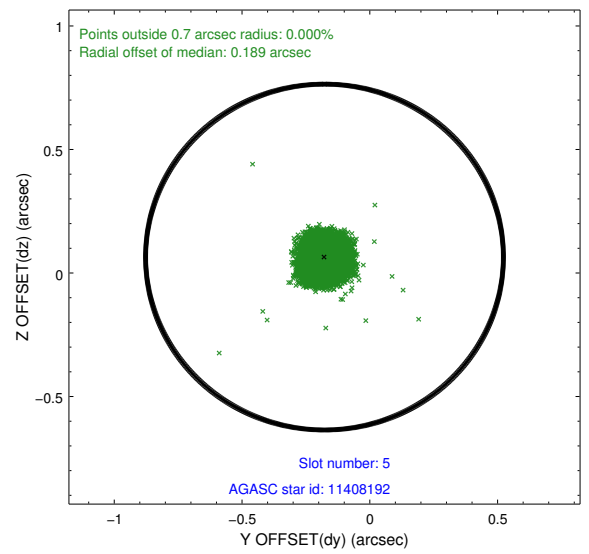
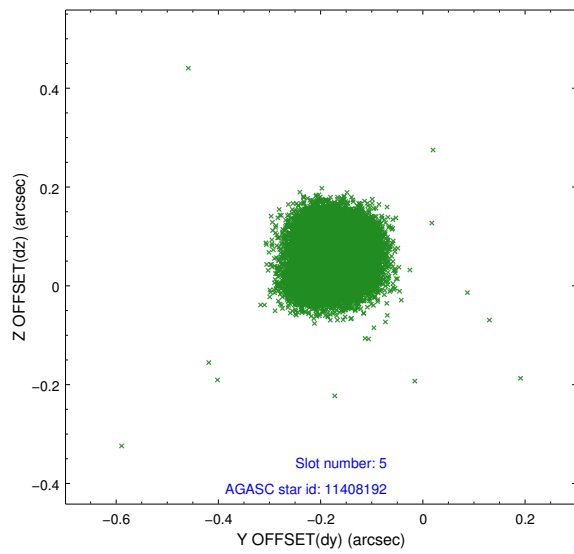
2.4.1 Slot 3



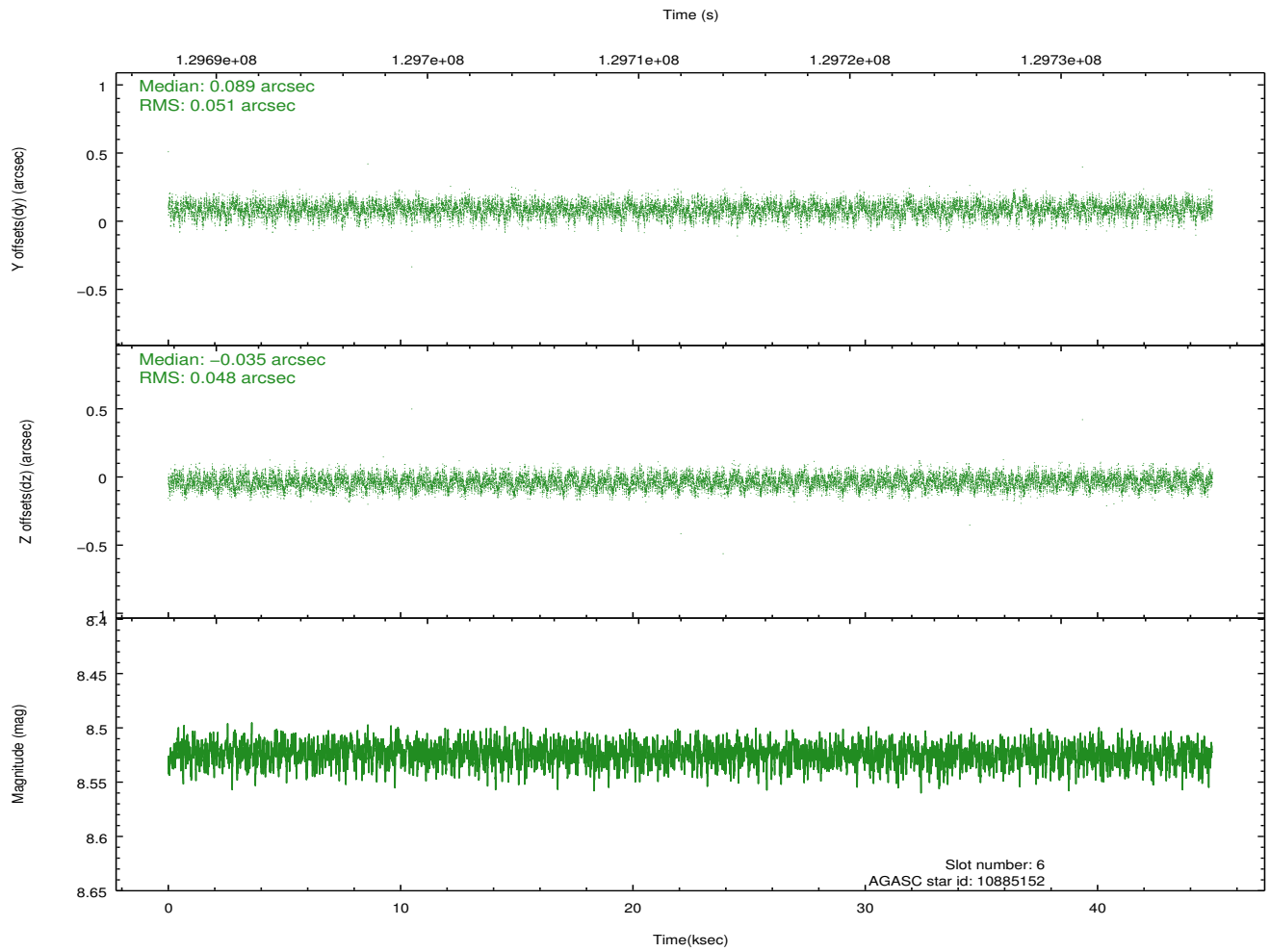
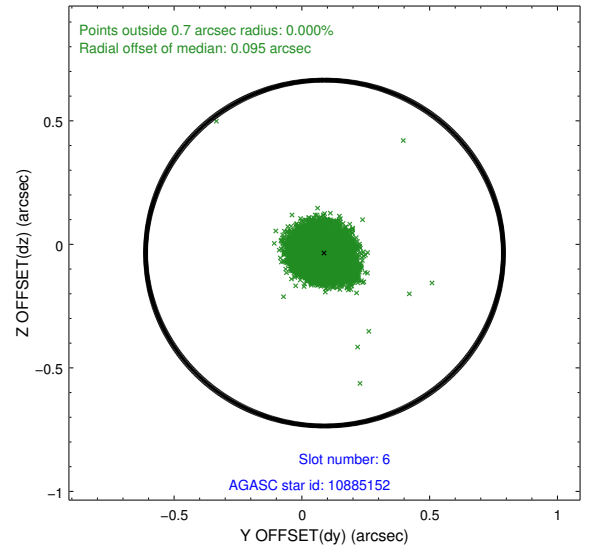
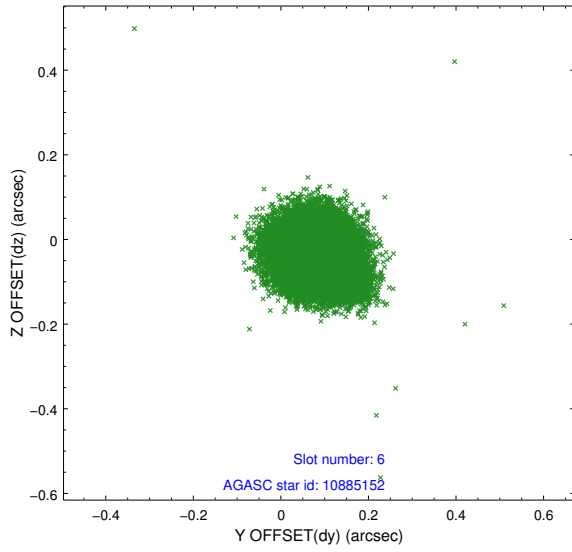
2.4.2 Slot 4



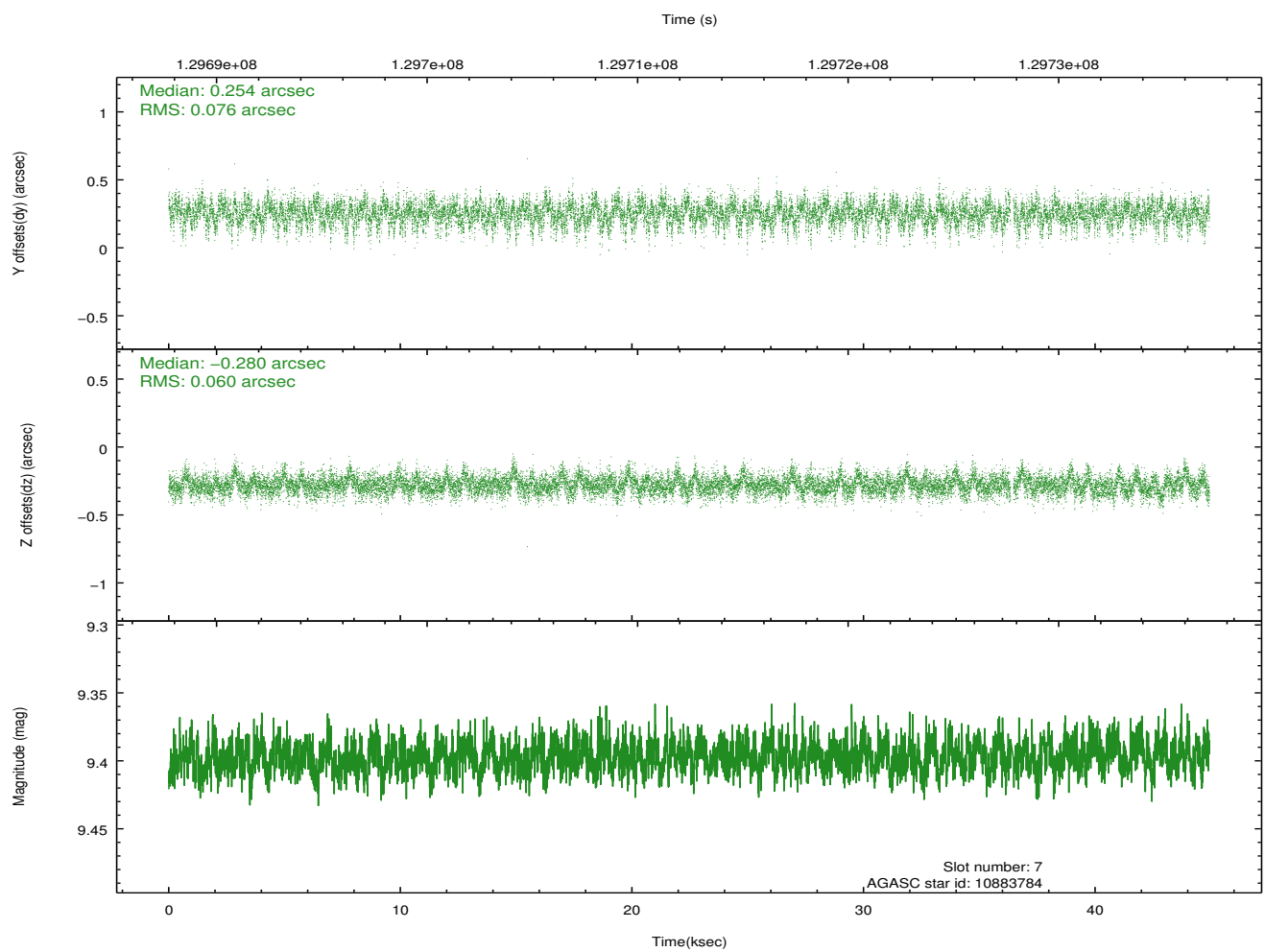
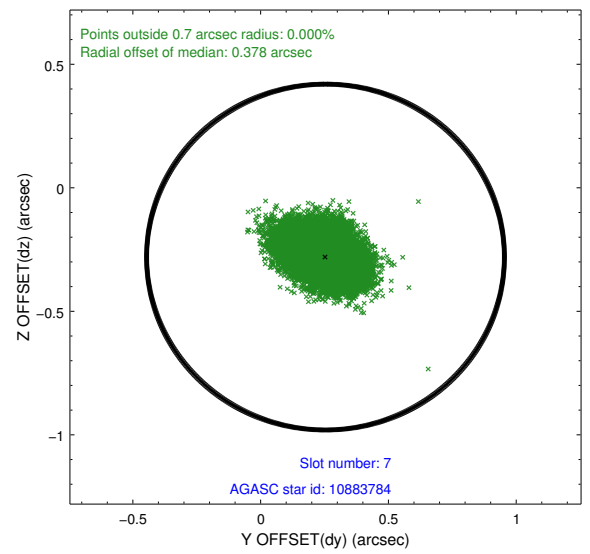
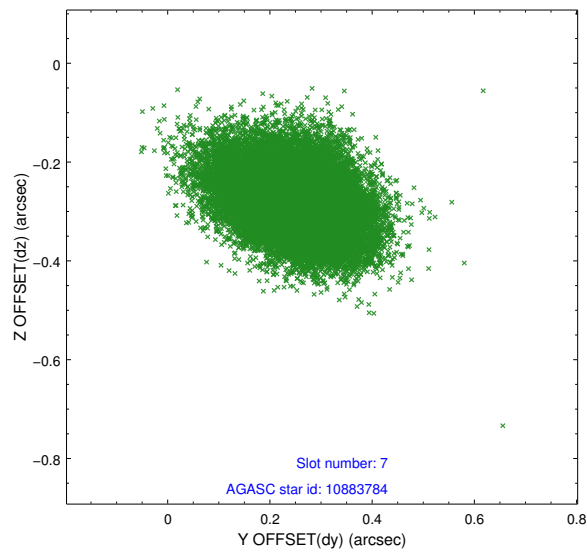
2.4.3 Slot 5



2.4.4 Slot 6

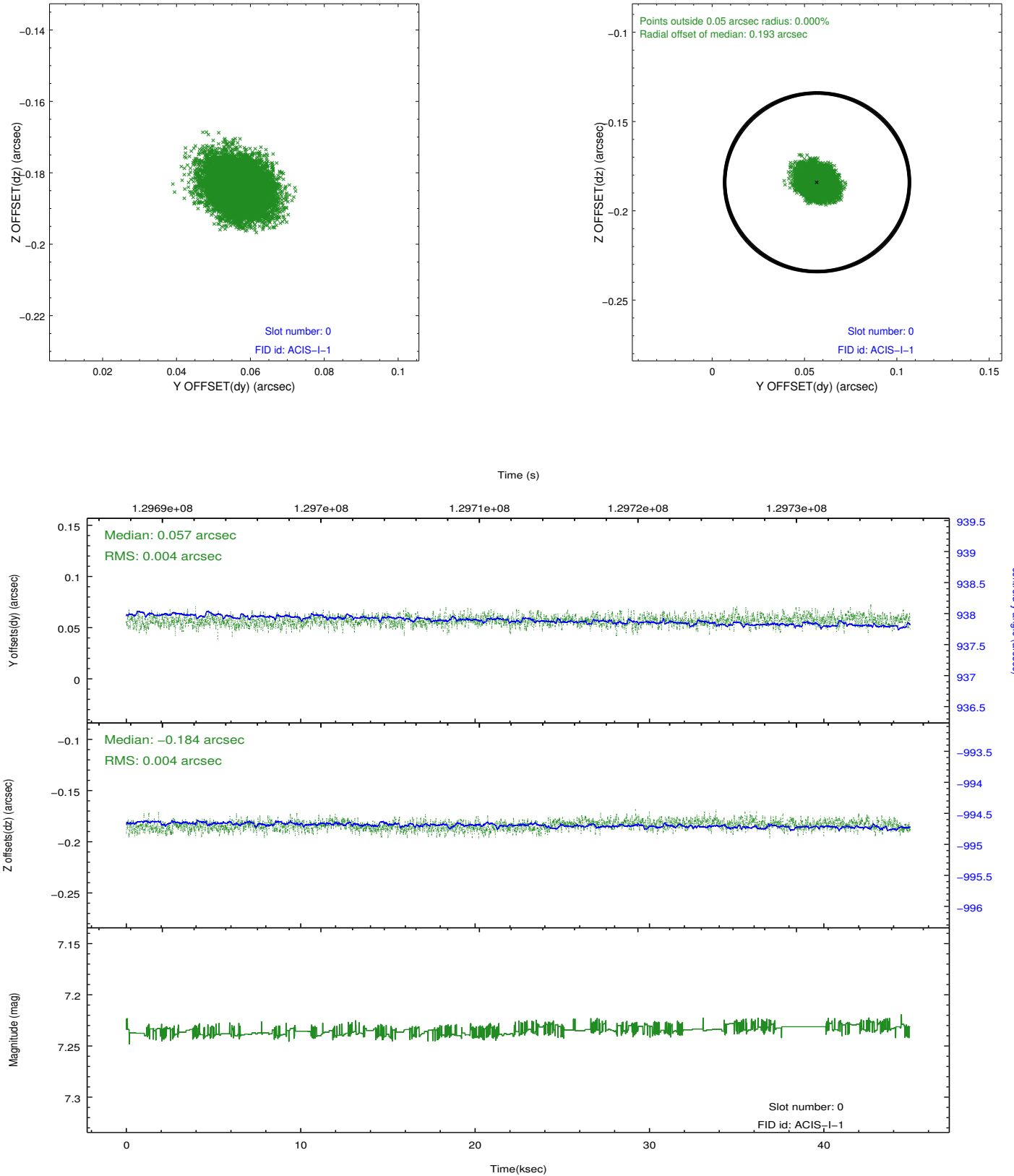


2.4.5 Slot 7

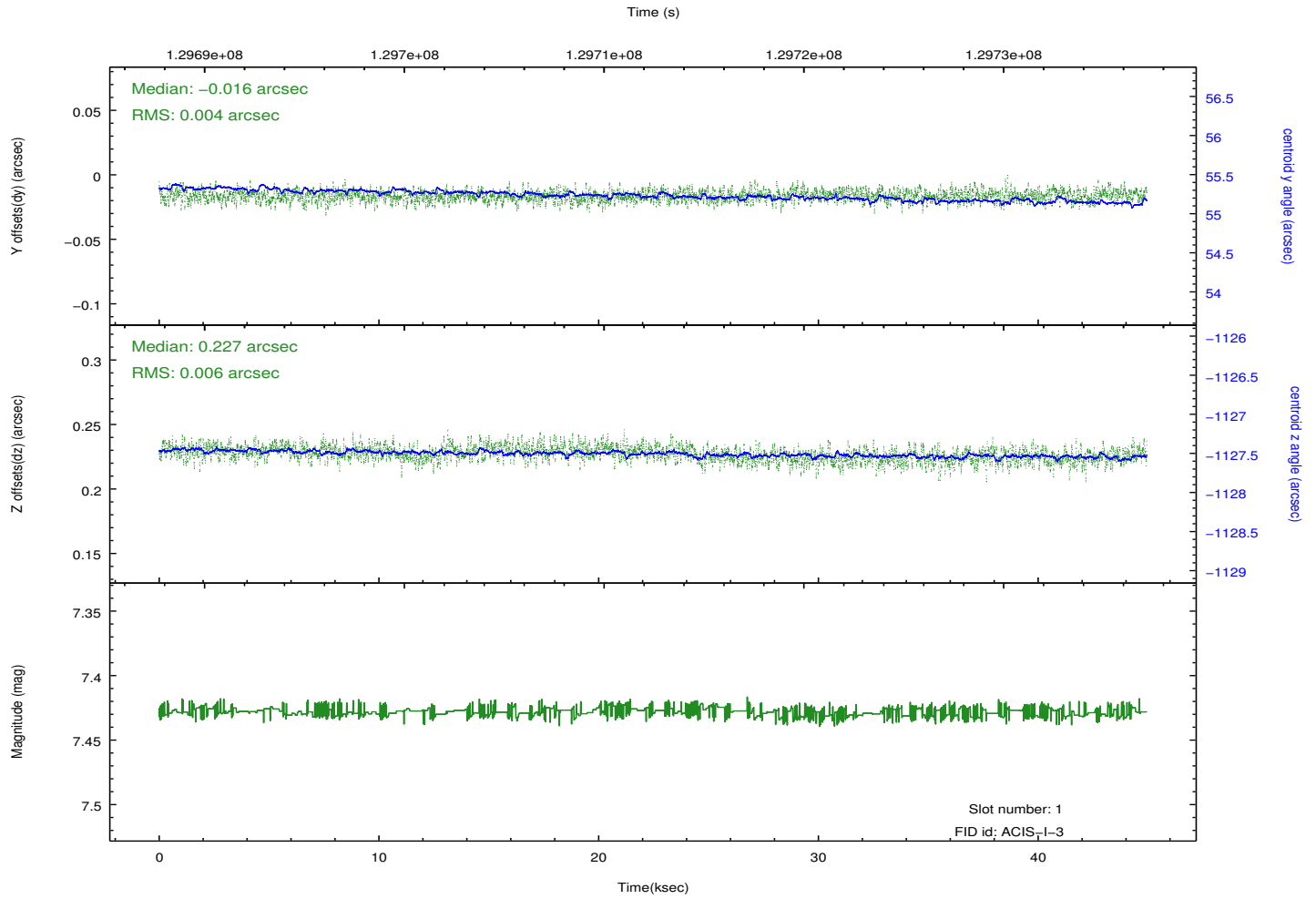
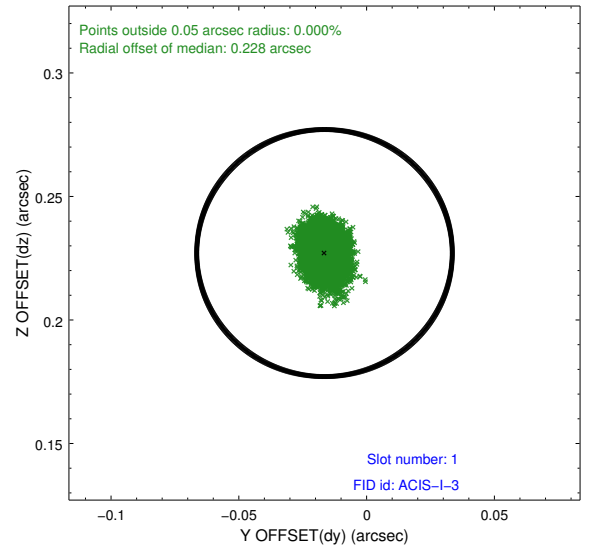
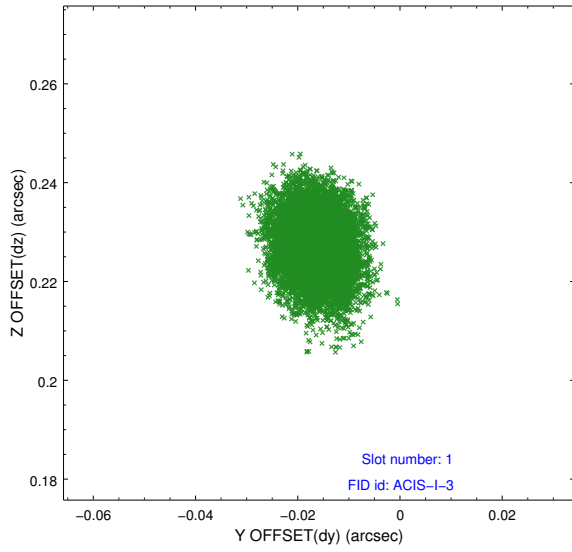


2.5 FID Slots

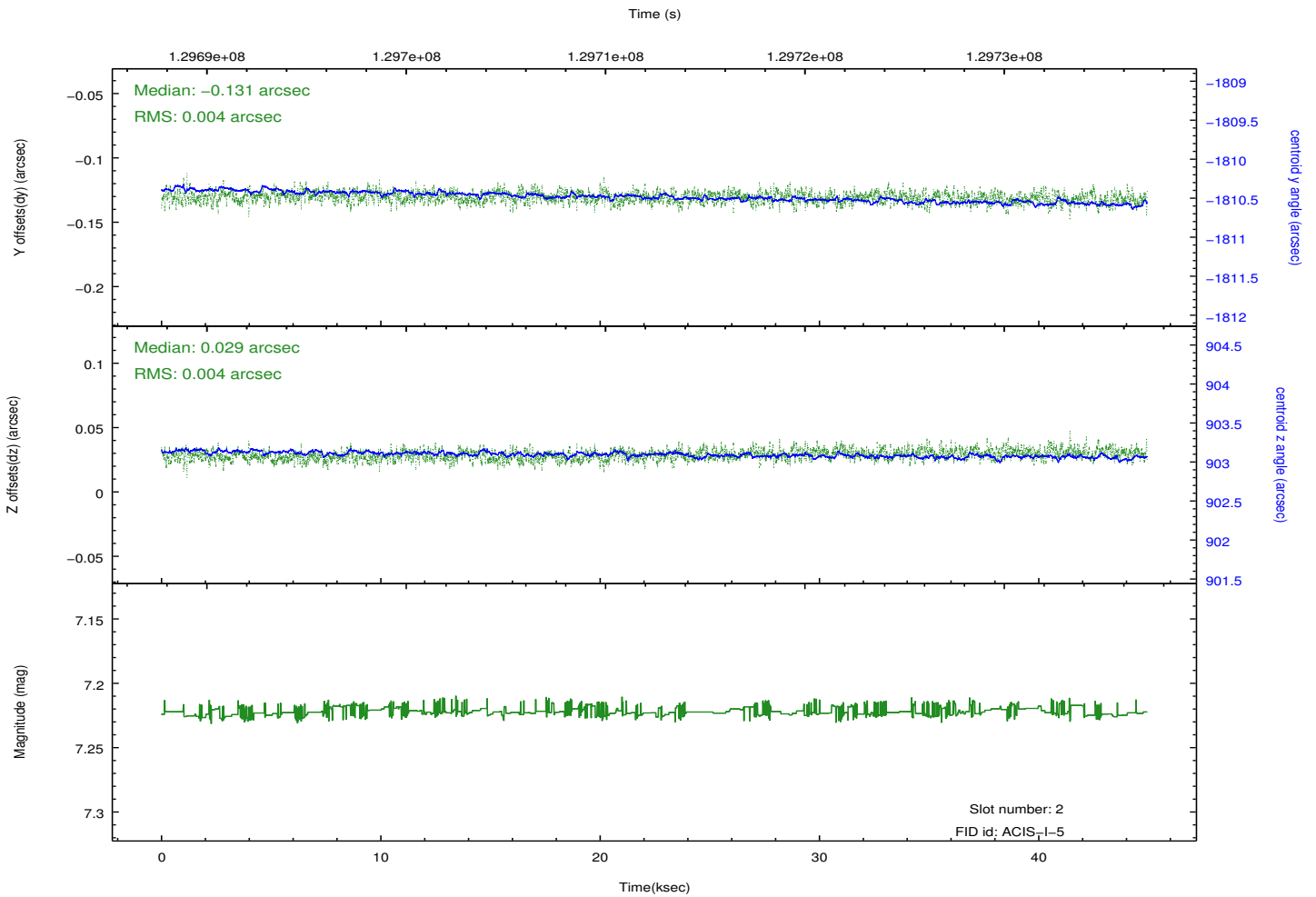
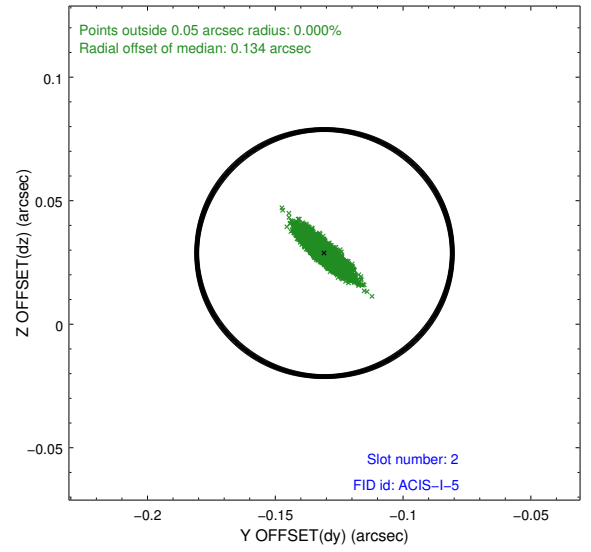
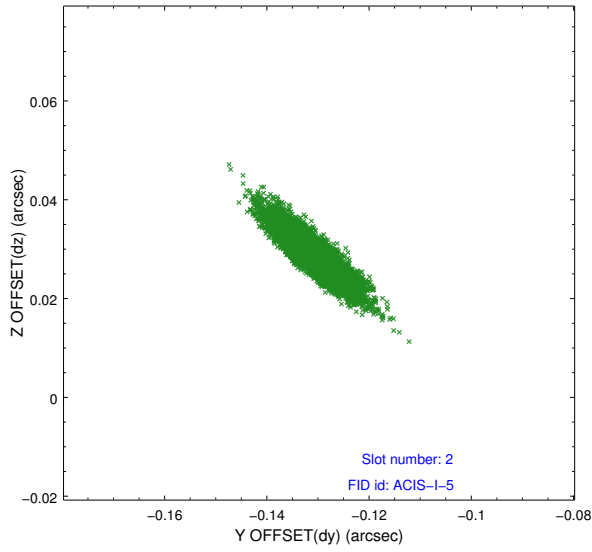
2.5.1 Slot 0



2.5.2 Slot 1



2.5.3 Slot 2



A Summary

A.1 Status

V&V Scientist	Jen Lauer
V&V Date (YYYY-MM-DD)	2012.10.03
V&V Edition	1
V&V Disposition and Status	OK
V&V Charge Time	44.215

A.2 Comments