

# V&V Reference Report

## L2 ASCDS Version : 8.4.5

Observation 3672 - L2 Version 3  
Chandra X-Ray Center

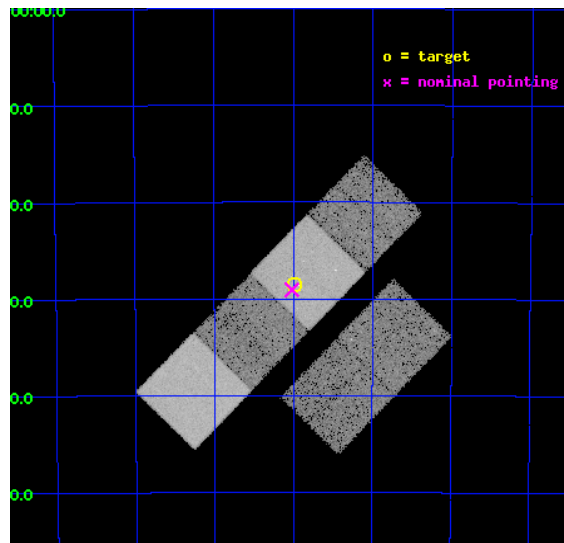
L2 Processing Date : Oct 9 2012

## Contents

<b>1</b>	<b>Front</b>	<b>2</b>
<b>2</b>	<b>OBI</b>	<b>3</b>
2.1	OBI . . . . .	3
2.1.1	Images . . . . .	3
2.1.2	Bias . . . . .	3
2.1.3	Parameters . . . . .	4
2.1.4	Events . . . . .	4
2.2	Compared Parameters . . . . .	5
2.3	Aspect . . . . .	6
2.4	Star Slots . . . . .	9
2.4.1	Slot 3 . . . . .	9
2.4.2	Slot 4 . . . . .	10
2.4.3	Slot 5 . . . . .	11
2.4.4	Slot 6 . . . . .	12
2.4.5	Slot 7 . . . . .	13
2.5	FID Slots . . . . .	14
2.5.1	Slot 0 . . . . .	14
2.5.2	Slot 1 . . . . .	15
2.5.3	Slot 2 . . . . .	16
<b>A</b>	<b>Summary</b>	<b>17</b>
A.1	Status . . . . .	17
A.2	Comments . . . . .	17

# 1 Front

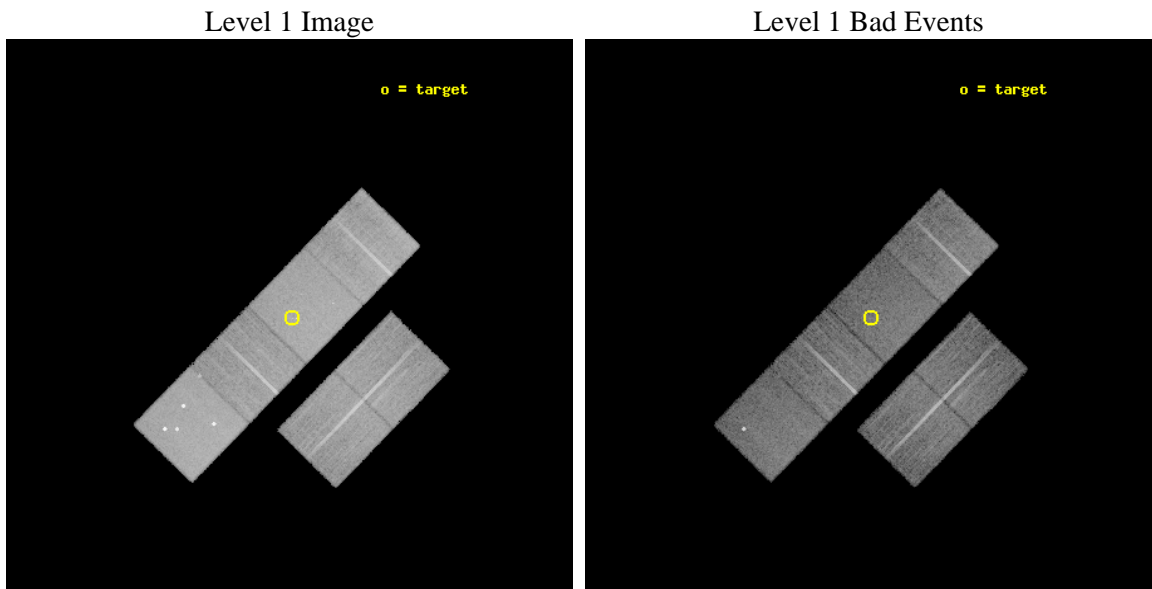
seq_num	400268	Sequence number
obs_id	3672	Observation id
title	FURTHER IMAGING OF THE JETS OF THE BLACK HOLE XTEJ1550-564	Proposa
observer	Prof. Stephane CORBEL	Principal investigator
object	XTE J1550-564	Source name
dtcycle	0	&#160
cycle	P	events from which exps? Prim/Second/Both
ra_targ	237.744583	Observer's specified target RA [deg]
dec_targ	-56.476556	Observer's specified target Dec [deg]
ra_nom	237.75445329873	Nominal RA [deg]
dec_nom	-56.48459989179	Nominal Dec [deg]
roll_nom	314.2251535493	Nominal Roll [deg]
revision	3	Processing version of data
ontime	18254.840423644	Sum of GTIs [s]
livetime	18023.686642454	Livetime [s]
ontime2	18251.640513301	Sum of GTIs [s]
ontime3	18254.717333585	Sum of GTIs [s]
ontime5	18254.79938364	Sum of GTIs [s]
ontime6	18254.758373588	Sum of GTIs [s]
ontime7	18254.840423644	Sum of GTIs [s]
ontime8	18251.435323358	Sum of GTIs [s]
l2events	185901	Number of level 2 events



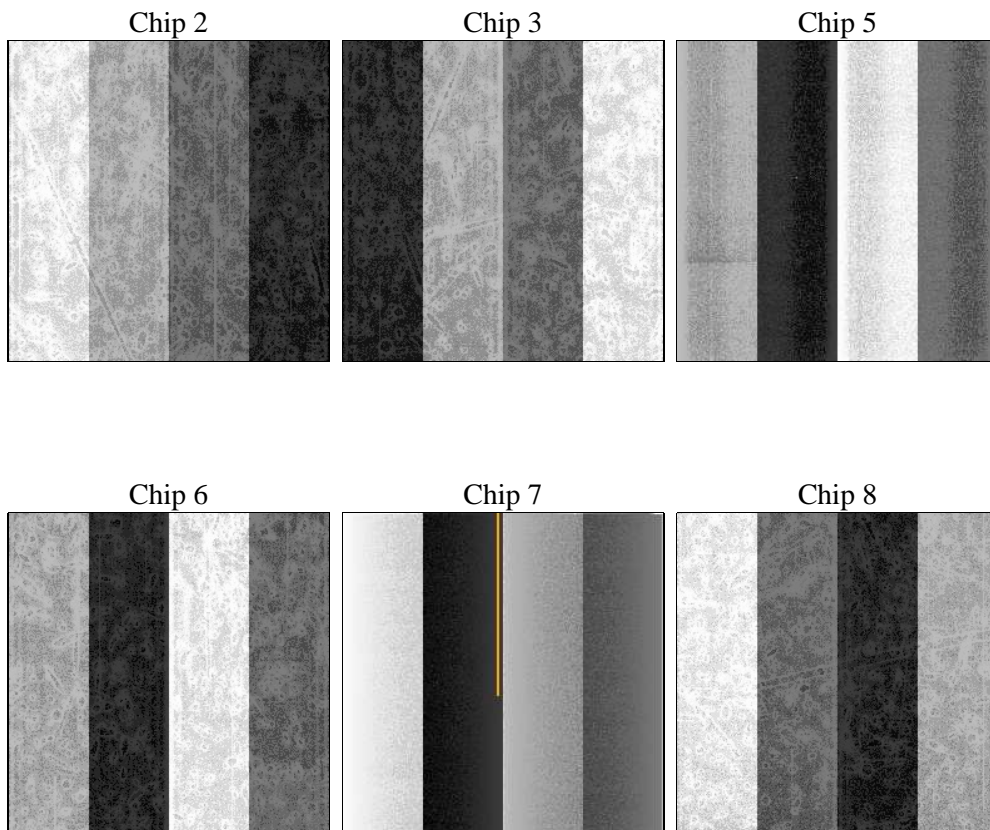
## 2 OBI

### 2.1 OBI

#### 2.1.1 Images



#### 2.1.2 Bias



### 2.1.3 Parameters

obi_num	0	Obi number	sched_exp_time	18500.000000	[s] Scheduled observation exposure time
ascdsver	8.4.5	Processing system revision	ontime	18254.840423644	Sum of GTIs [s]
caldbver	4.5.2	&#160	ontime2	18251.640513301	Sum of GTIs [s]
date	2012-10-09T05:21:56	Date and time of file creation	ontime3	18254.717333585	Sum of GTIs [s]
revision	3	Processing version of data	ontime5	18254.79938364	Sum of GTIs [s]
			ontime6	18254.758373588	Sum of GTIs [s]
			ontime7	18254.840423644	Sum of GTIs [s]
			ontime8	18251.435323358	Sum of GTIs [s]
			l1events	832754	Number of level 1 events

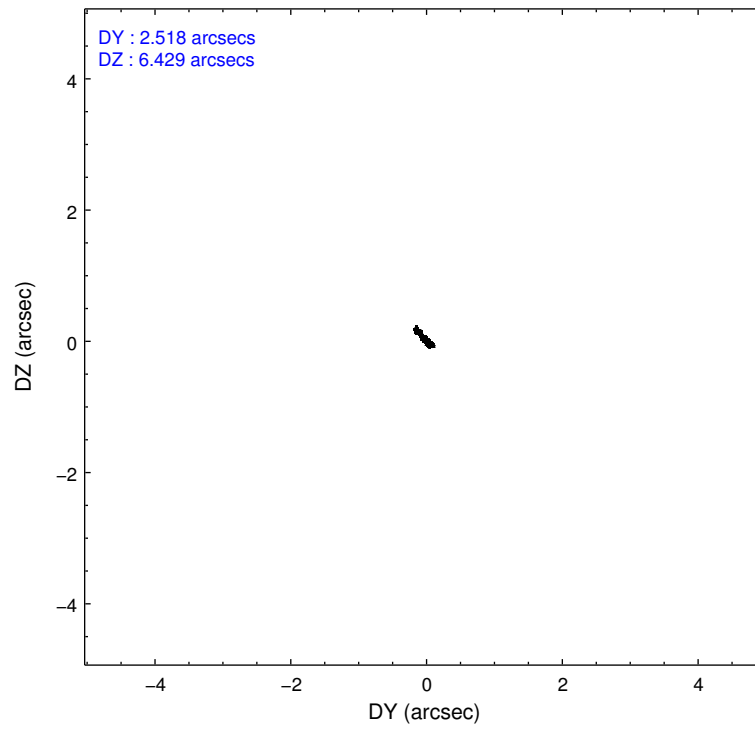
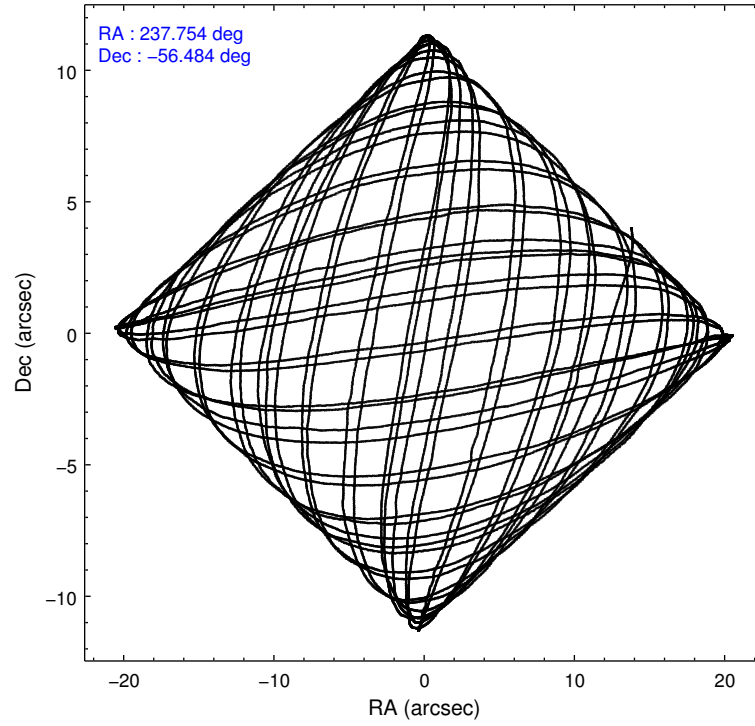
### 2.1.4 Events

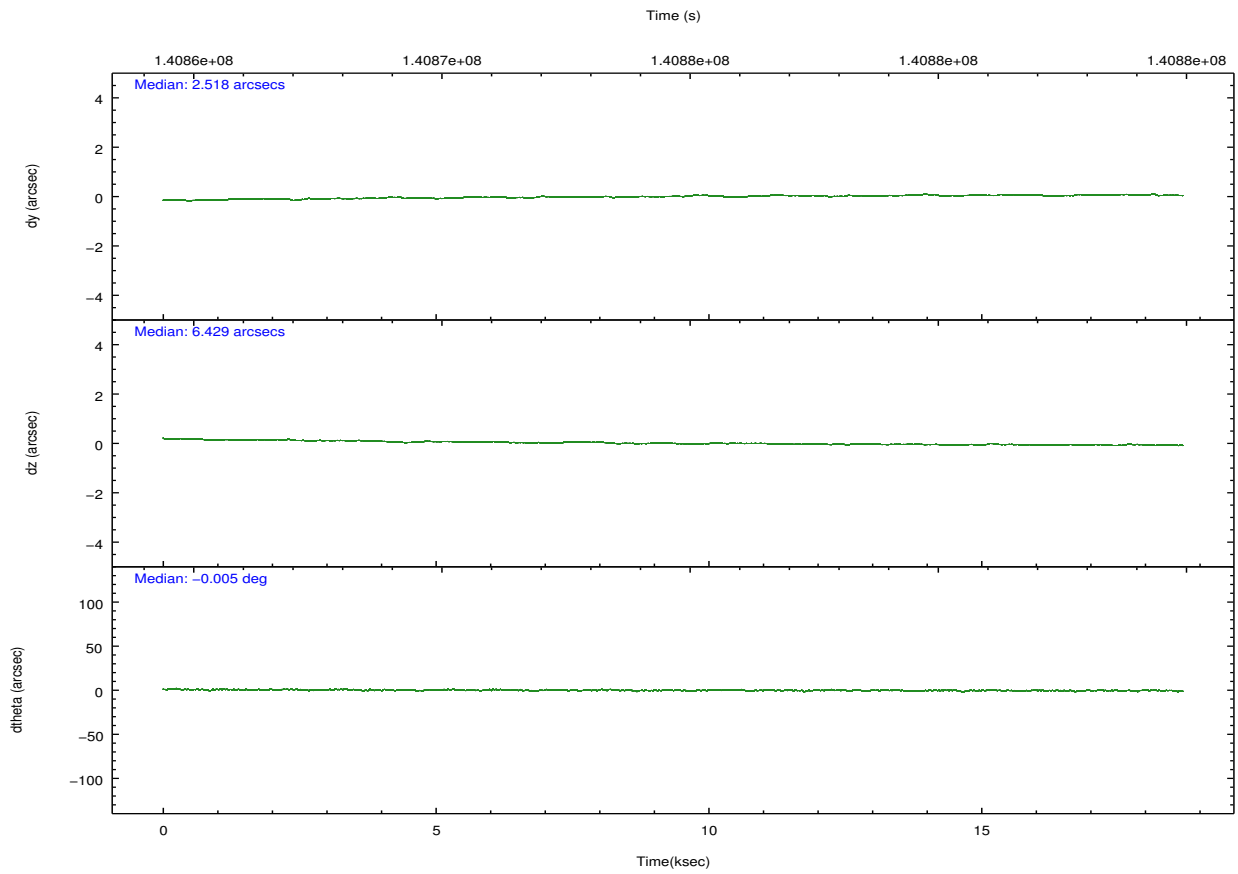
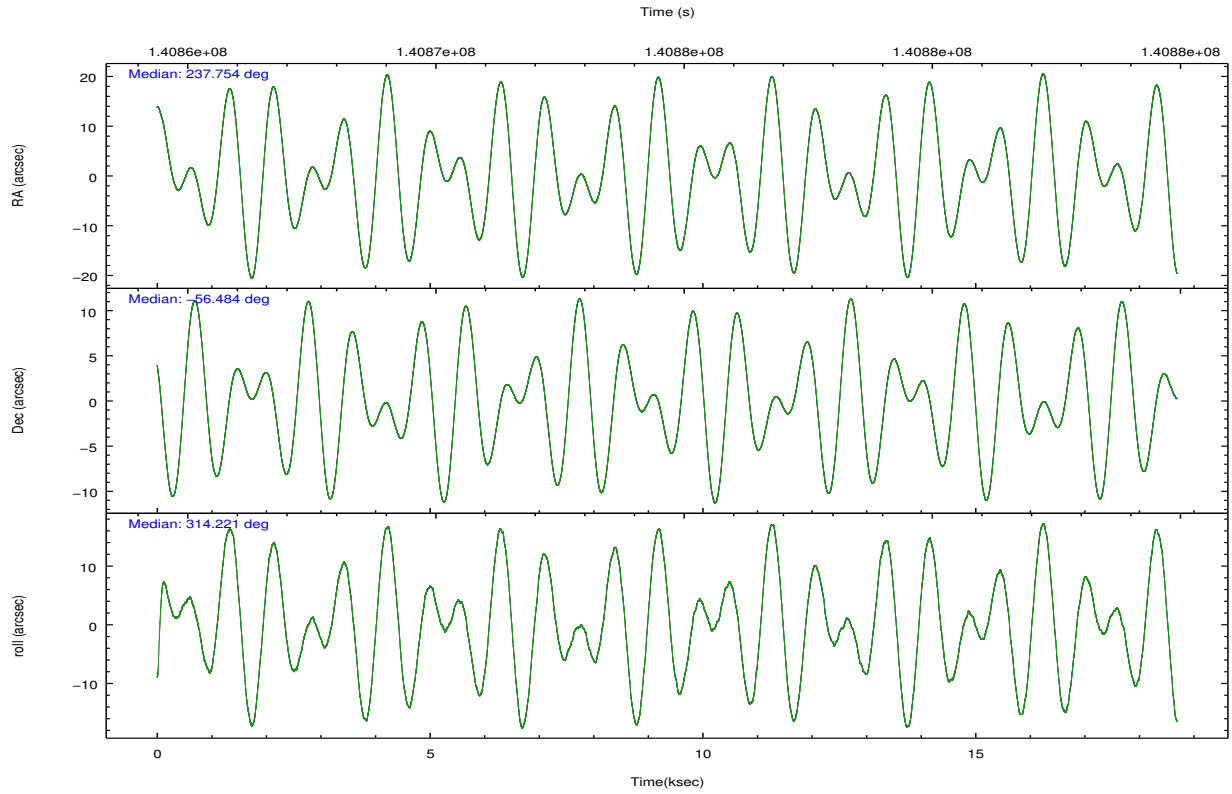
	ccd 2	ccd 3	ccd 5	ccd 6	ccd 7	ccd 8		ccd 2	ccd 3	ccd 5	ccd 6	ccd 7	ccd 8
level 1 events	118645	113434	179260	118604	153753	149058	grade 0 events	6198	6115	15705	6612	6329	9694
rejected events	104794	99592	92772	103755	89192	119152		5%	5%	8%	5%	4%	6%
rejected %	88%	87%	51%	87%	58%	79%	grade 1 events	61	54	232	63	134	88
								0%	0%	0%	0%	0%	0%
							grade 2 events	2919	2786	24196	2906	12706	6477
								2%	2%	13%	2%	8%	4%
							grade 3 events	1207	1259	3299	1392	5877	3075
								1%	1%	1%	1%	3%	2%
							grade 4 events	1207	1271	3149	1347	5860	2893
								1%	1%	1%	1%	3%	1%
							grade 5 events	4200	4581	12944	5009	14632	6362
								3%	4%	7%	4%	9%	4%
							grade 6 events	2322	2415	40159	2600	33811	7775
								1%	2%	22%	2%	21%	5%
							grade 7 events	100531	94953	79576	98675	74404	112694
								84%	83%	44%	83%	48%	75%

## 2.2 Compared Parameters

Parameter	Planned	Actual	Parameter	Planned	Actual
Instrument	ACIS	ACIS	Obspar format version number	7	7
Detector	ACIS-235678	ACIS-235678	Obspar file type	PREDICTED	ACTUAL
Grating	NONE	NONE	Obspar update status	NONE	UPDATED
Data mode	FAINT	FAINT	Number of optional ACIS chips dropped	0	0
Observation mode	POINTING	POINTING	On-chip summing requested	N	N
[deg] Pointing RA	237.706774	237.75445329873	Subarray requested	NONE	NONE
[deg] Pointing Dec	-56.477497	-56.48459989178989	Alternating exposures requested	N	N
[deg] Pointing Roll	314.028772	314.225153549305	[s] Primary exposure time	0.000000	3.2
[mm] SIM focus pos	-0.684267	-0.6828225247311905			
[mm] SIM defocus	0	0.001444936568705701			
[mm] SIM translation stage pos	-190.132523	-190.1400660498719			
[mm] SIM translation stage offset	0	0.00754346686406393			
[s] Observation start time (MET)	140865498.184000	140864798.26783			
Observation start date	2002-06-19T09:17:14	2002-06-19T09:06:38			
[s] Observation end time (MET)	140883998.184000	140884603.31864			
Observation end date	2002-06-19T14:25:34	2002-06-19T14:36:43			
Read mode	TIMED	TIMED			

## 2.3 Aspect





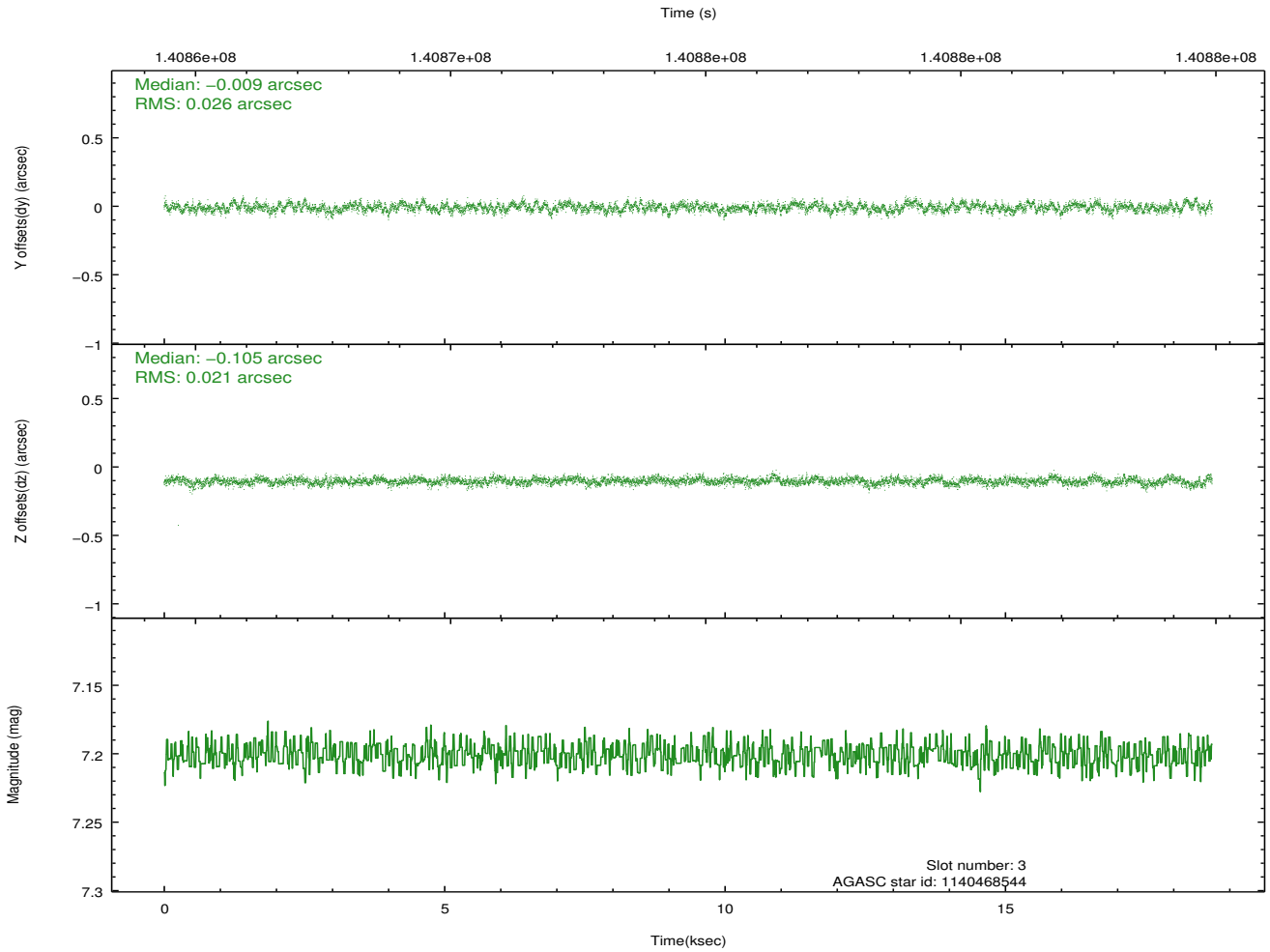
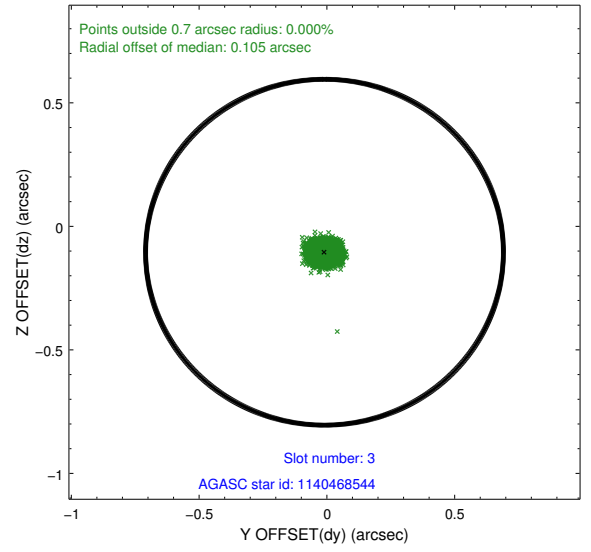
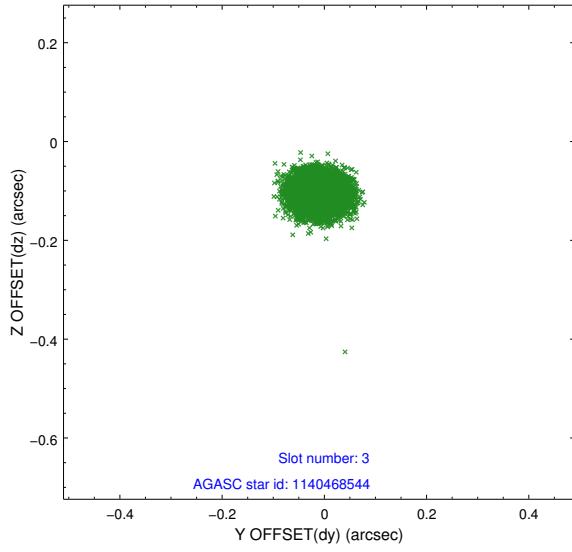
### Slot Statistics

slot	status	id	mag	n_pts	med_dy	med_dz	dr1	dr2	ra	dec	mean_y	mean_z
0	FID	ACIS-S-2	7.12	4558	-0.032	0.012	0.007	0.012	0.000000	0.000000	-755.14	-1727.60
1	FID	ACIS-S-4	7.21	4559	-0.033	0.012	0.007	0.014	0.000000	0.000000	2158.01	180.71
2	FID	ACIS-S-5	7.23	4559	0.034	-0.015	0.008	0.013	0.000000	0.000000	-1807.67	174.53
3	GUIDE	1140468544	7.20	9117	-0.009	-0.105	0.036	0.058	237.524626	-55.920475	-1696.24	1129.27
4	GUIDE	1140999968	7.95	9117	-0.021	0.083	0.058	0.089	238.471952	-56.275988	547.83	1598.26
5	GUIDE	1141004216	8.13	9115	0.010	0.025	0.071	0.114	237.245988	-56.471011	-650.60	-644.31
6	GUIDE	1140861088	9.06	9115	0.011	0.066	0.078	0.124	236.443591	-56.463656	-1764.54	-1787.53
7	GUIDE	1140998784	9.21	9113	0.012	-0.066	0.079	0.130	238.683224	-56.839204	2282.87	468.11

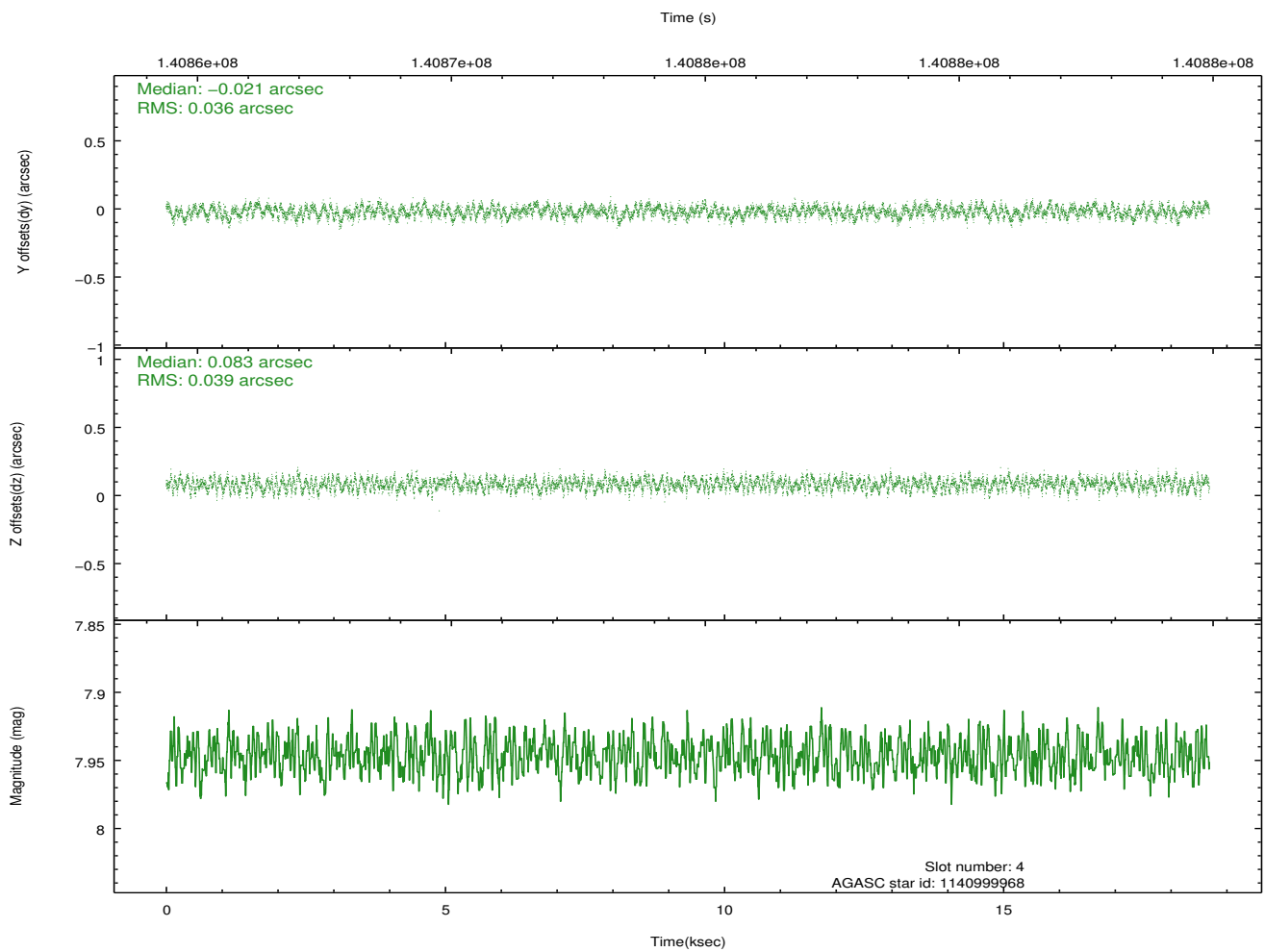
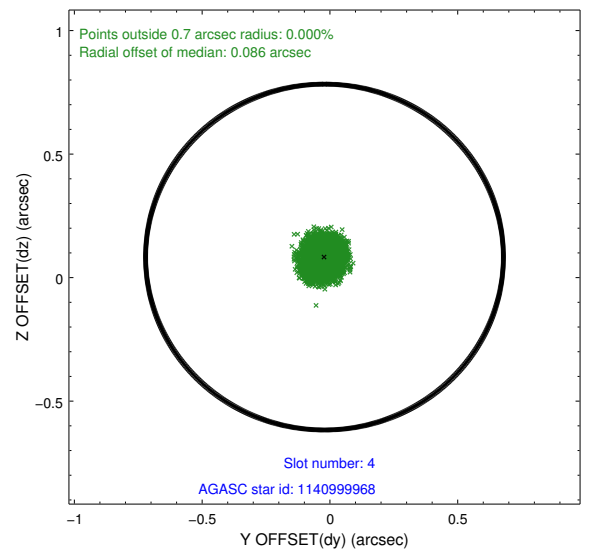
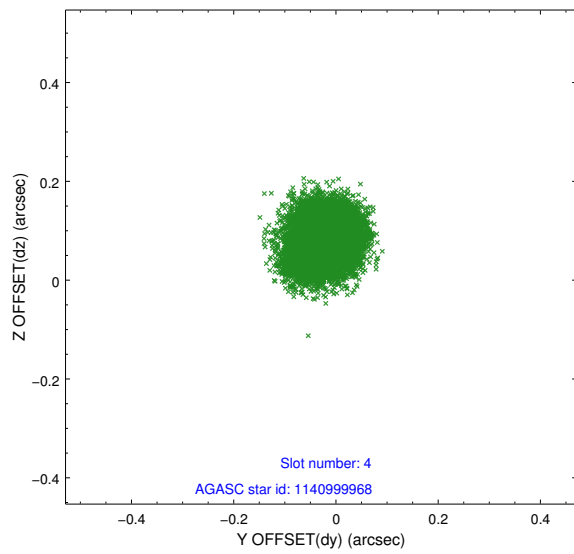
∞

## 2.4 Star Slots

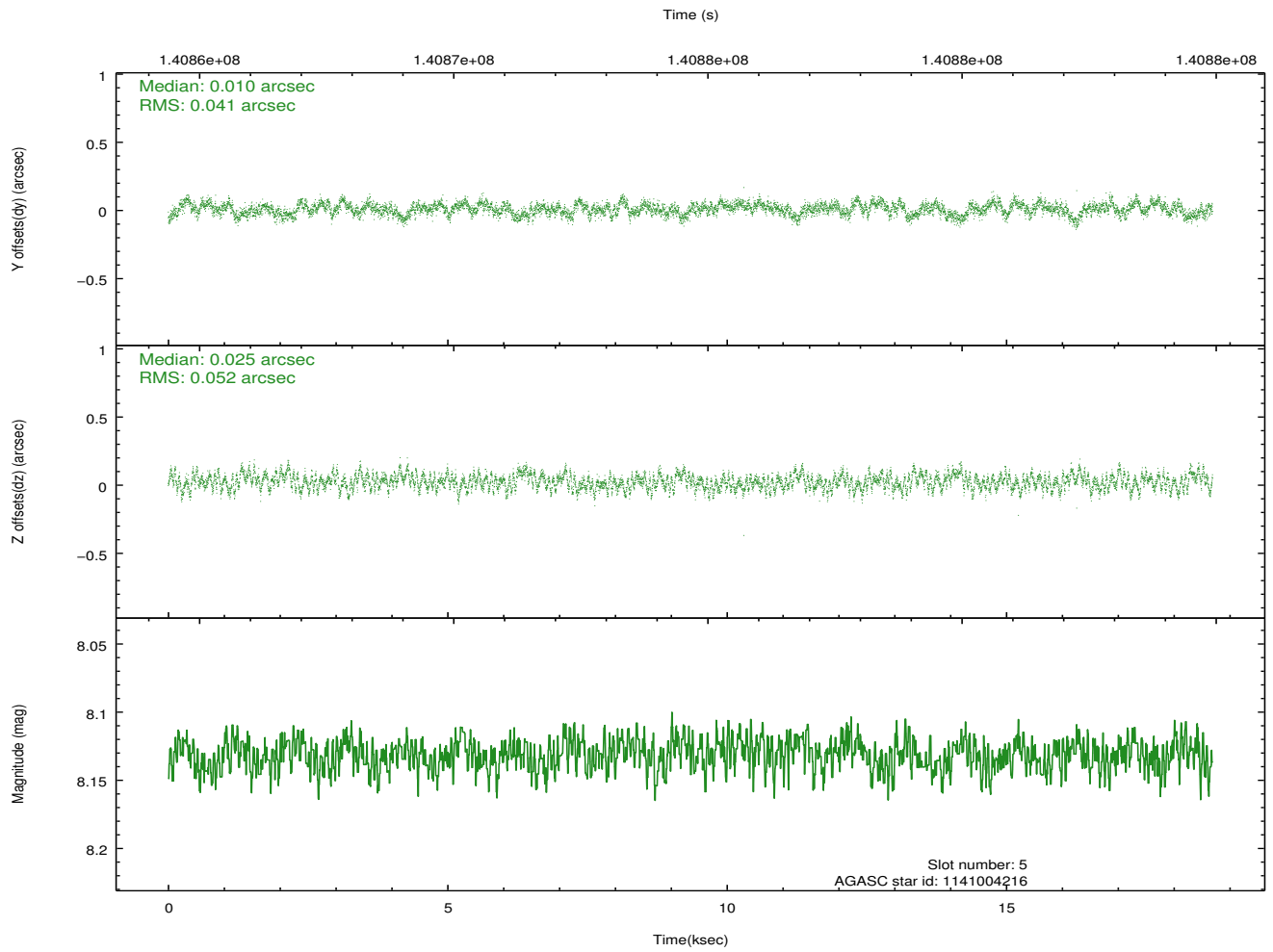
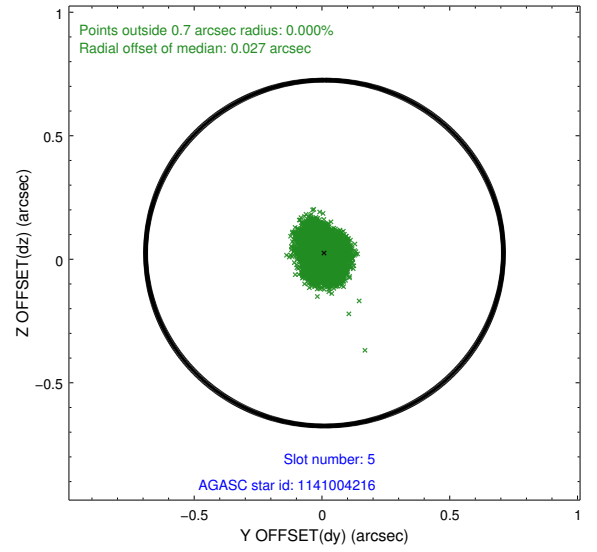
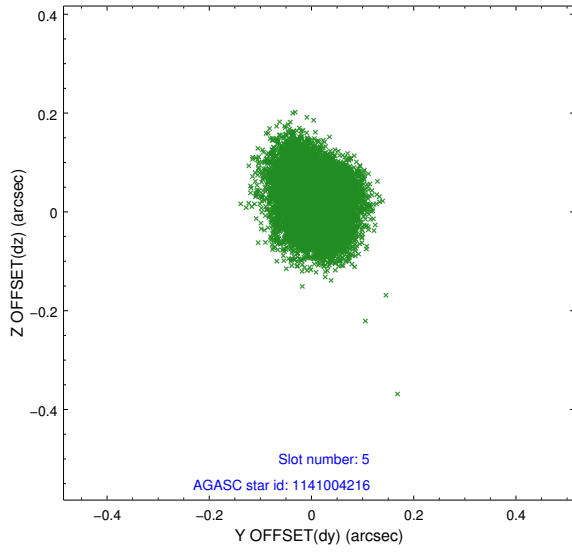
### 2.4.1 Slot 3



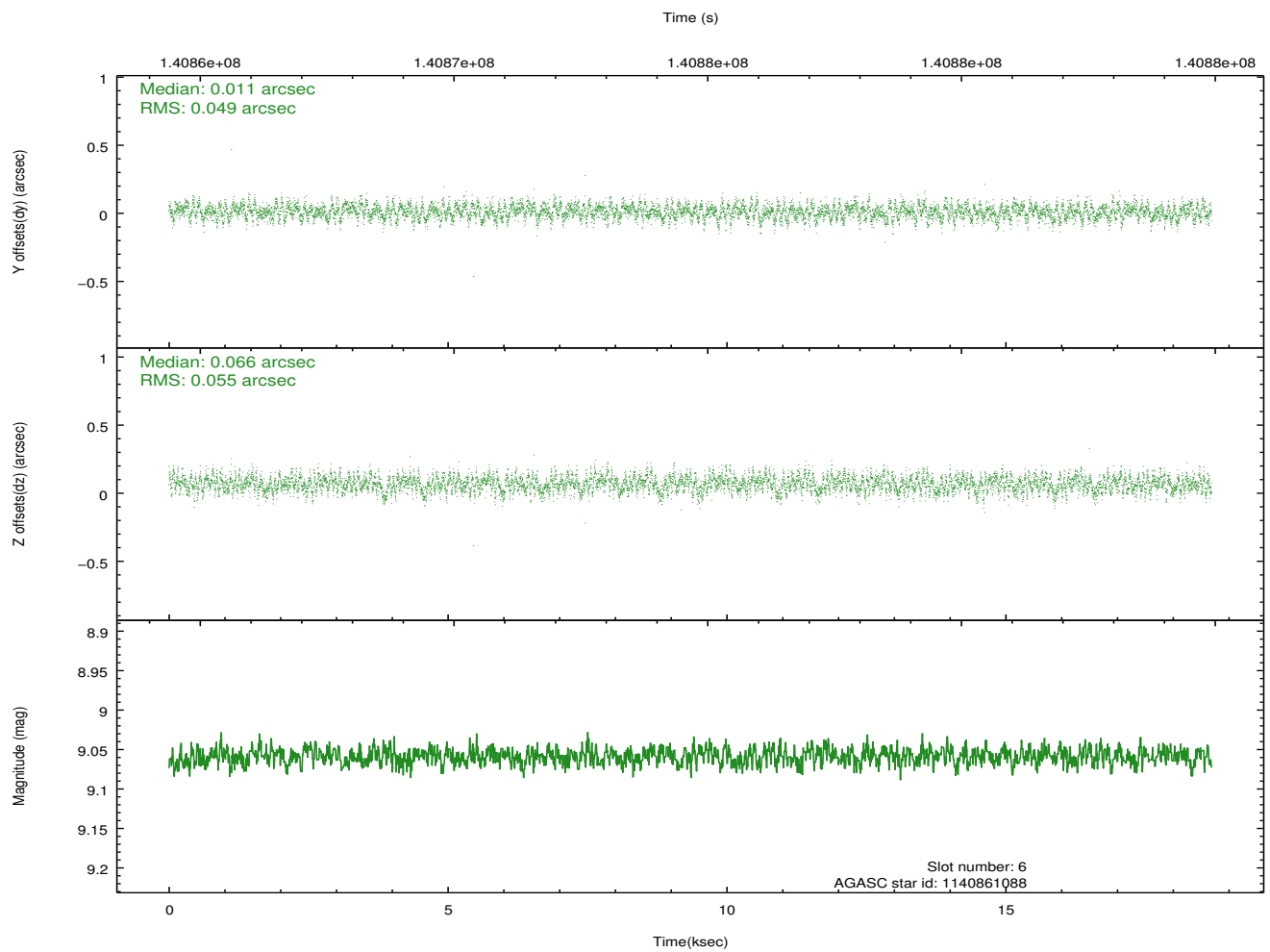
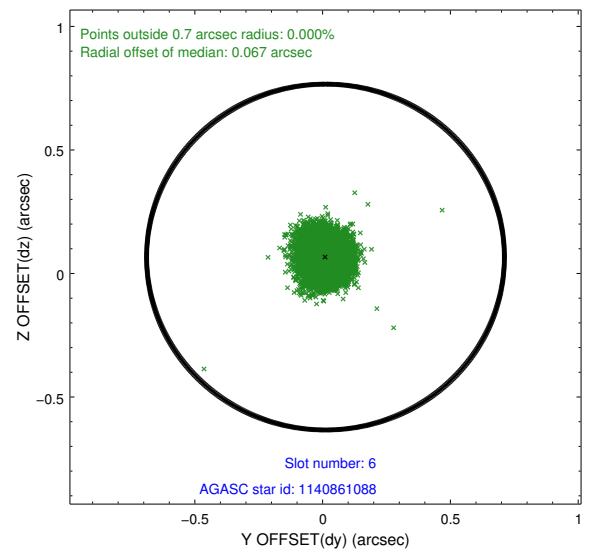
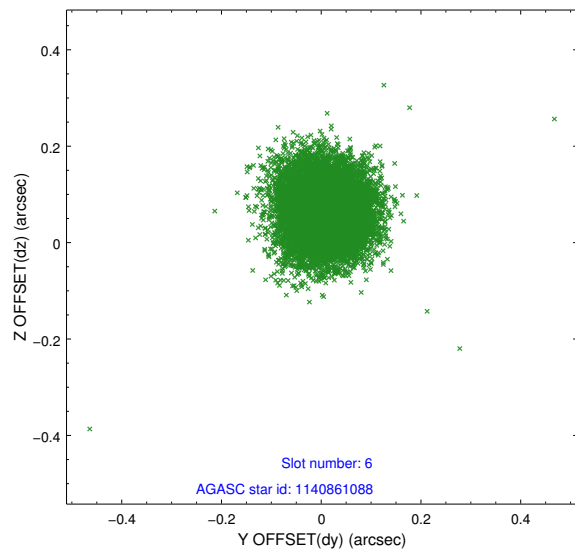
## 2.4.2 Slot 4



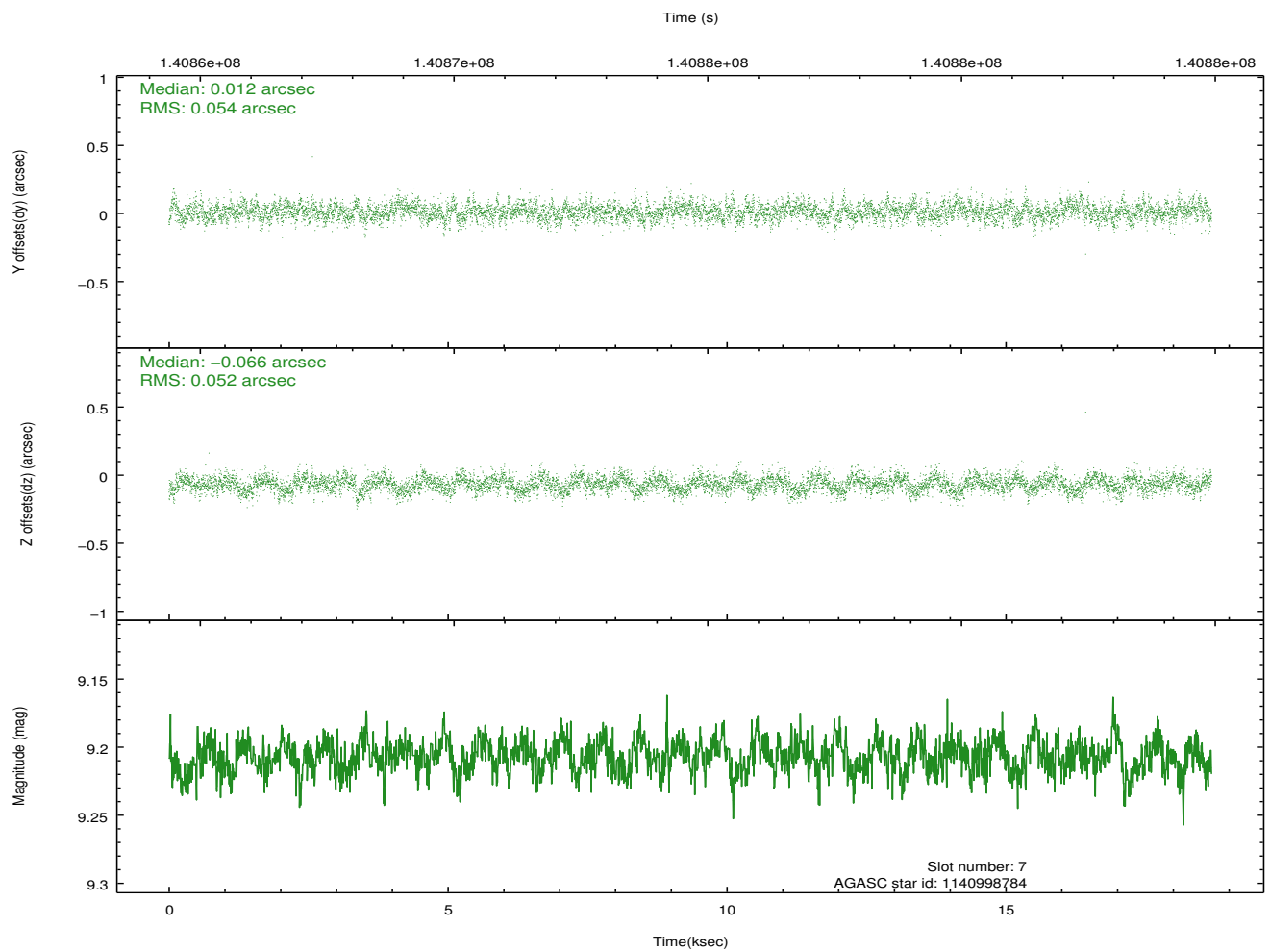
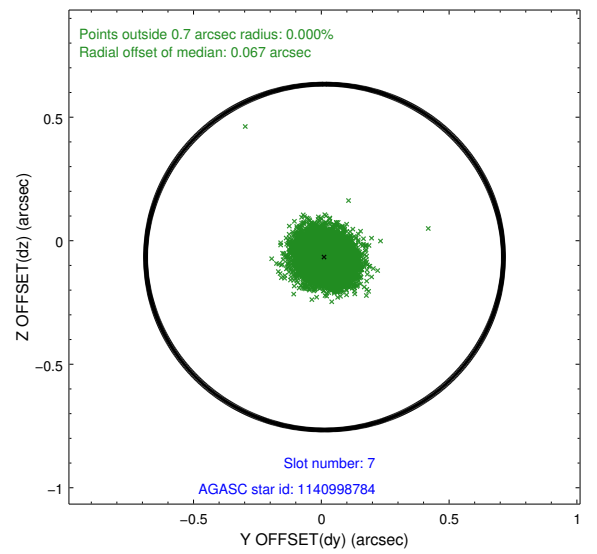
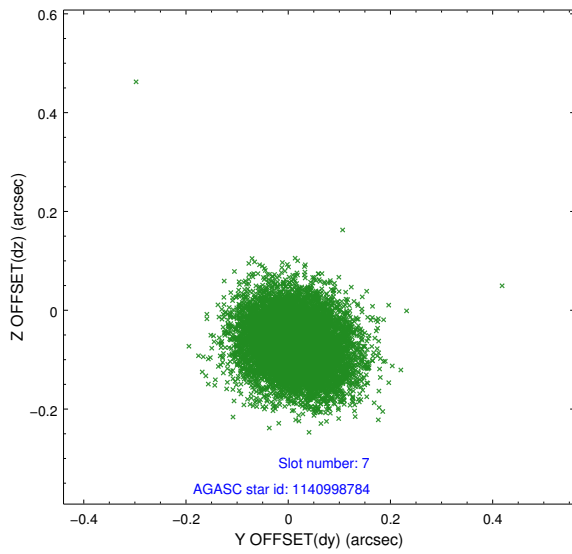
### 2.4.3 Slot 5



## 2.4.4 Slot 6

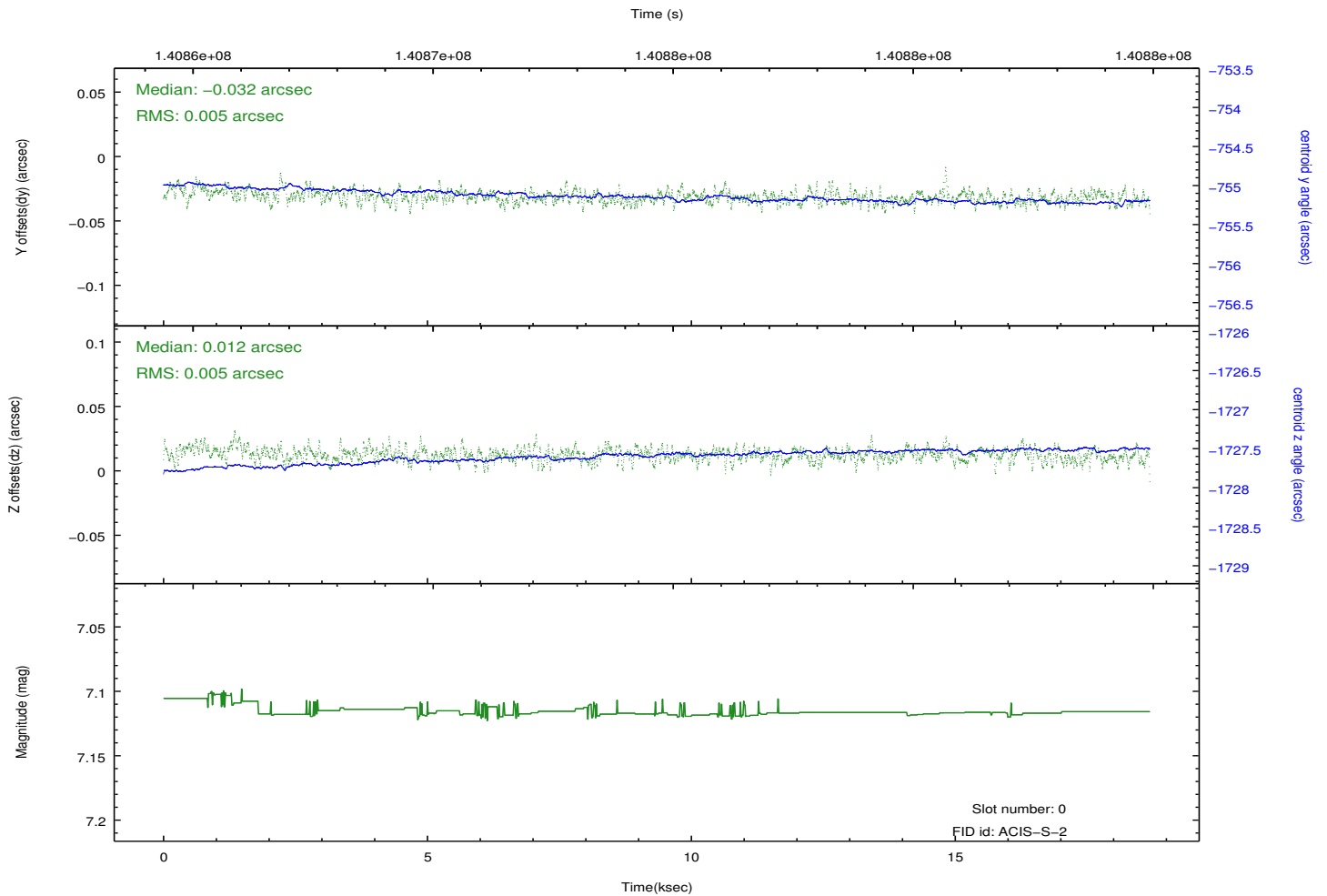
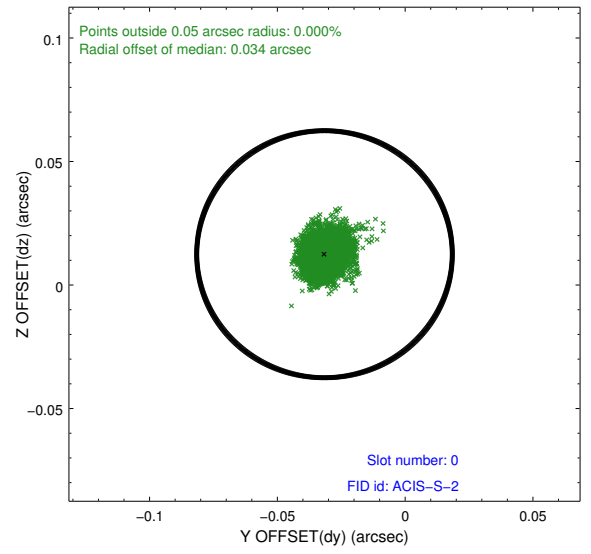
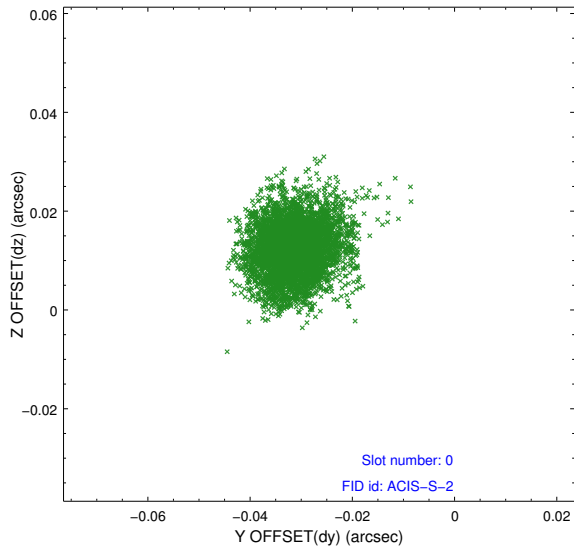


## 2.4.5 Slot 7

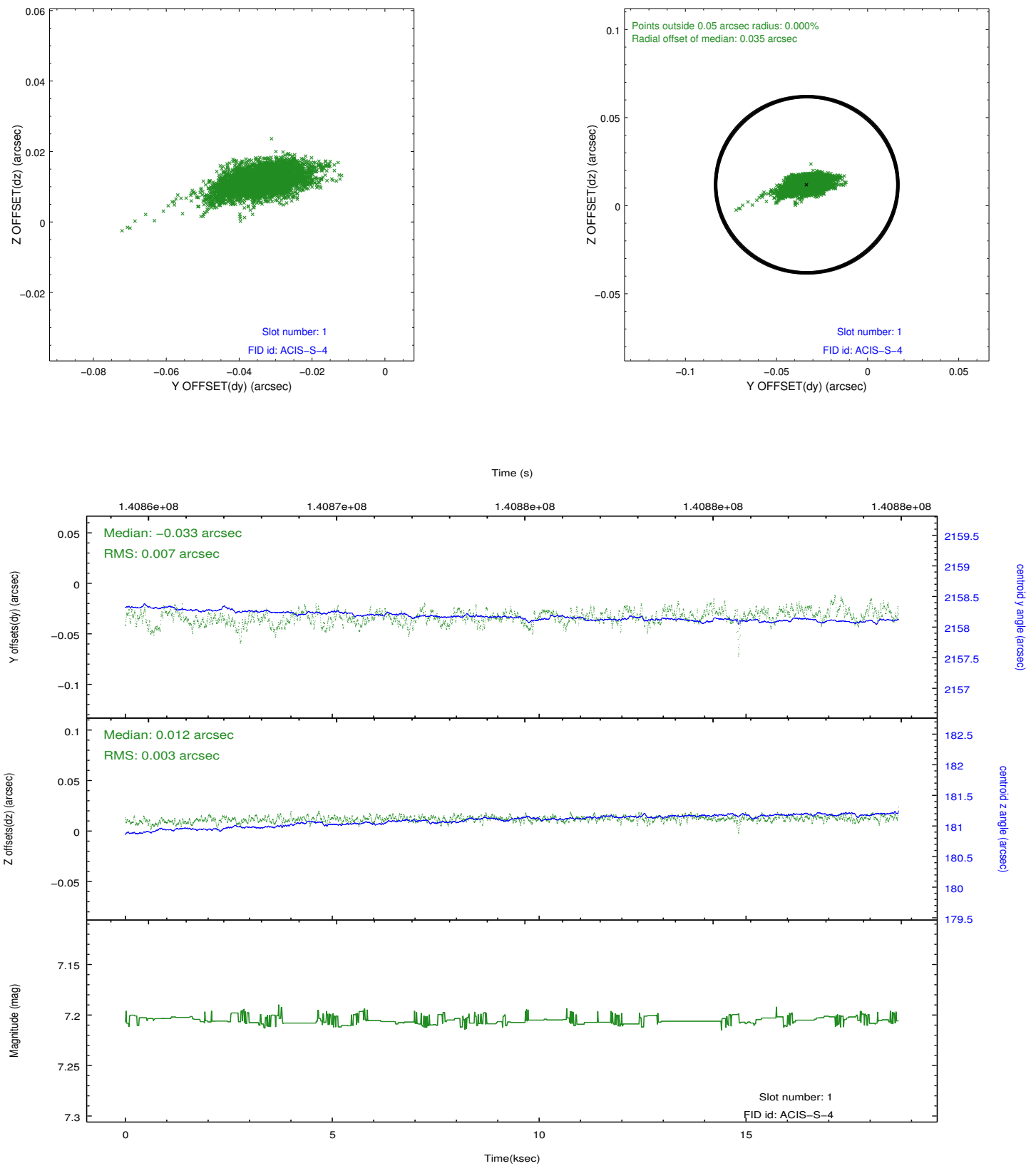


## 2.5 FID Slots

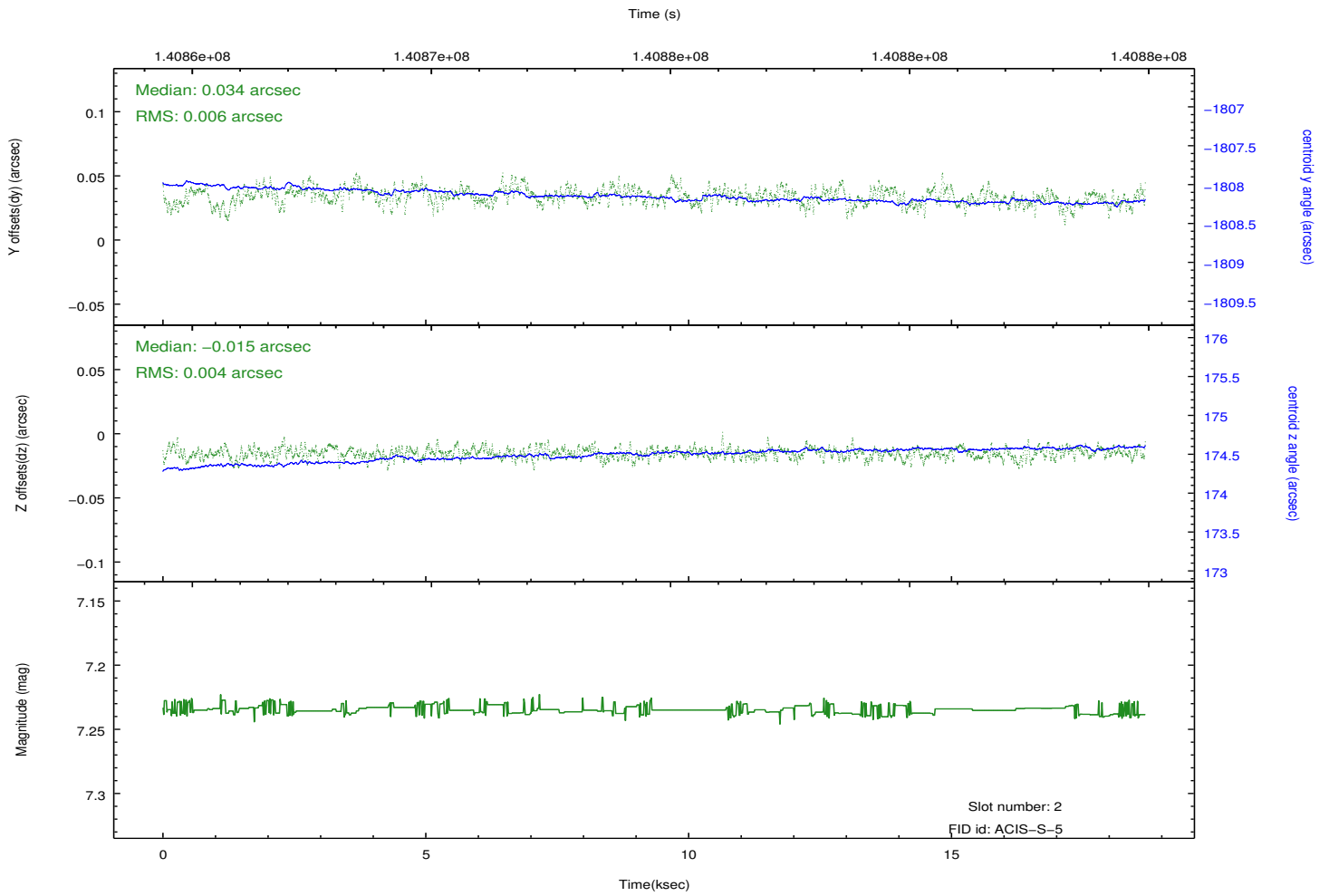
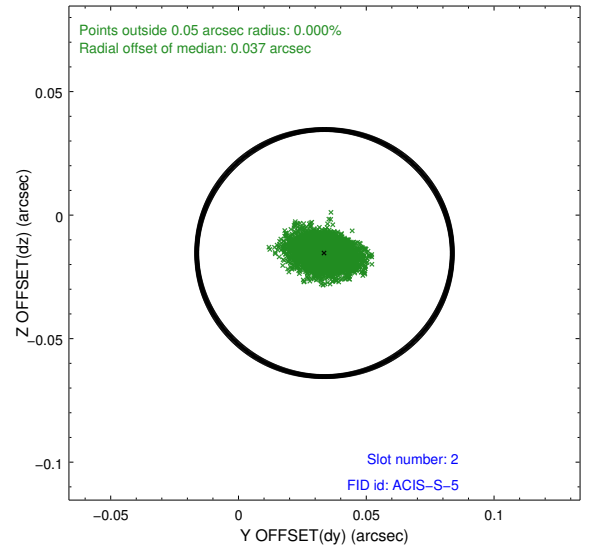
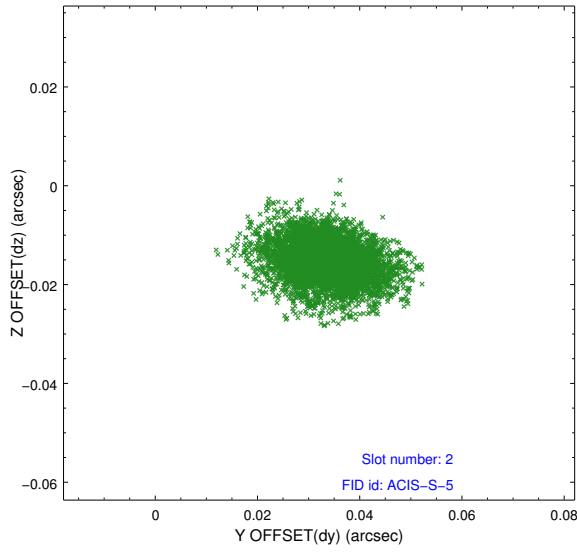
### 2.5.1 Slot 0



## 2.5.2 Slot 1



### 2.5.3 Slot 2



# A Summary

## A.1 Status

V&V Scientist	Beth Sundheim
V&V Date (YYYY-MM-DD)	2012.10.18
V&V Edition	1
V&V Disposition and Status	OK
V&V Charge Time	18.255

## A.2 Comments