

# V&V Reference Report

## L2 ASCDS Version : 8.5.1.1

Observation 3732 - L2 Version 6  
Chandra X-Ray Center

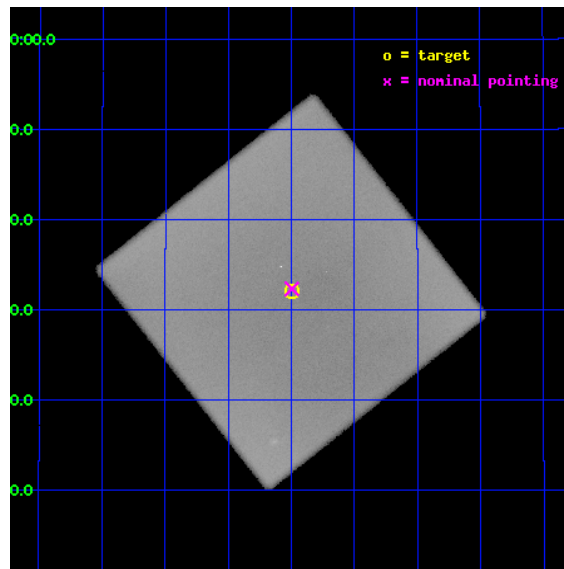
L2 Processing Date : Feb 15 2013

## Contents

<b>1</b>	<b>Front</b>	<b>2</b>
<b>2</b>	<b>OBI</b>	<b>3</b>
2.1	OBI . . . . .	3
2.1.1	Images . . . . .	3
2.1.2	Parameters . . . . .	4
2.1.3	Events . . . . .	4
2.2	Compared Parameters . . . . .	5
2.3	Aspect . . . . .	6
2.4	Star Slots . . . . .	9
2.4.1	Slot 3 . . . . .	9
2.4.2	Slot 4 . . . . .	10
2.4.3	Slot 5 . . . . .	11
2.4.4	Slot 6 . . . . .	12
2.4.5	Slot 7 . . . . .	13
2.5	FID Slots . . . . .	14
2.5.1	Slot 0 . . . . .	14
2.5.2	Slot 1 . . . . .	15
2.5.3	Slot 2 . . . . .	16
<b>A</b>	<b>Summary</b>	<b>17</b>
A.1	Status . . . . .	17
A.2	Comments . . . . .	17

# 1 Front

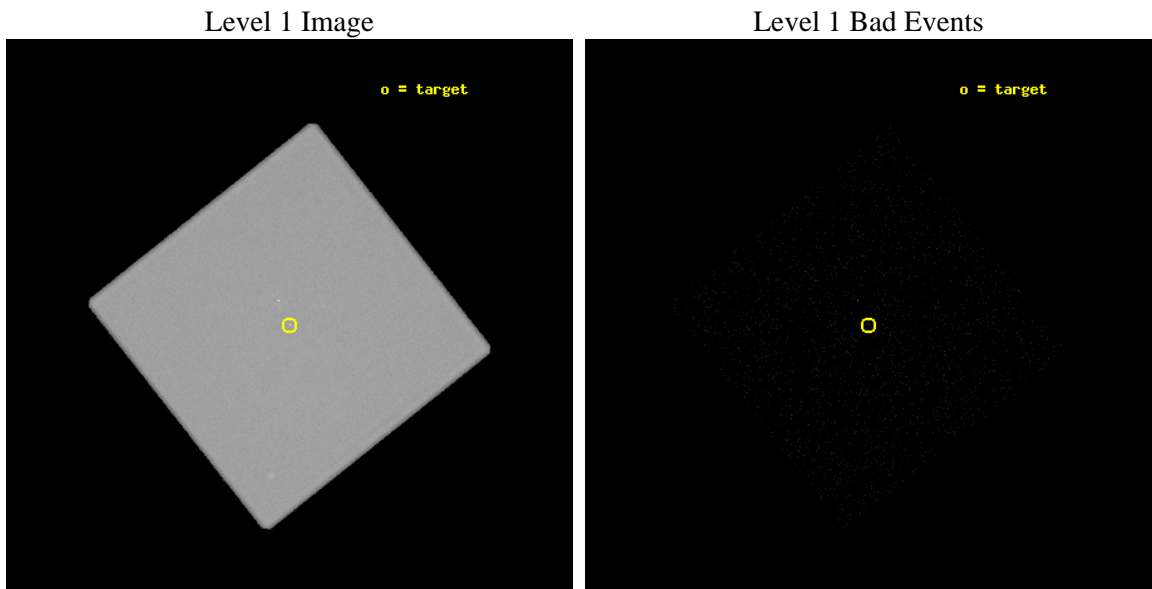
seq_num	200202	Sequence number
obs_id	3732	Observation id
title	RESOLVING THE TRIPLE PROTOSTAR/T TAU SYSTEM T TAU NS	Proposal titl
observer	Prof. Manuel Guedel	Principal investigator
object	T TAU	Source name
ra_targ	65.4975	Observer's specified target RA [deg]
dec_targ	19.535111	Observer's specified target Dec [deg]
ra_nom	65.498722604979	Nominal RA [deg]
dec_nom	19.539069819757	Nominal Dec [deg]
roll_nom	96.664169763354	Nominal Roll [deg]
revision	6	Processing version of data
ontime	25321.60108915	[s]
livetime	19135.413911212	Ontime multiplied by DTCOR
l2events	2647997	Number of level 2 events



## 2 OBI

### 2.1 OBI

#### 2.1.1 Images



### 2.1.2 Parameters

obi_num	0	Obi number	sched_exp_time	29090.000000	[s] Scheduled observation exposure time
ascdsver	8.5.1.1	Processing system revision	ontime	25321.60108915	[s]
caldbver	4.5.5	&#160	l1events	4483615	Number of level 1 events
date	2013-02-15T15:50:24	Date and time of file creation			
revision	6	Processing version of data			

### 2.1.3 Events

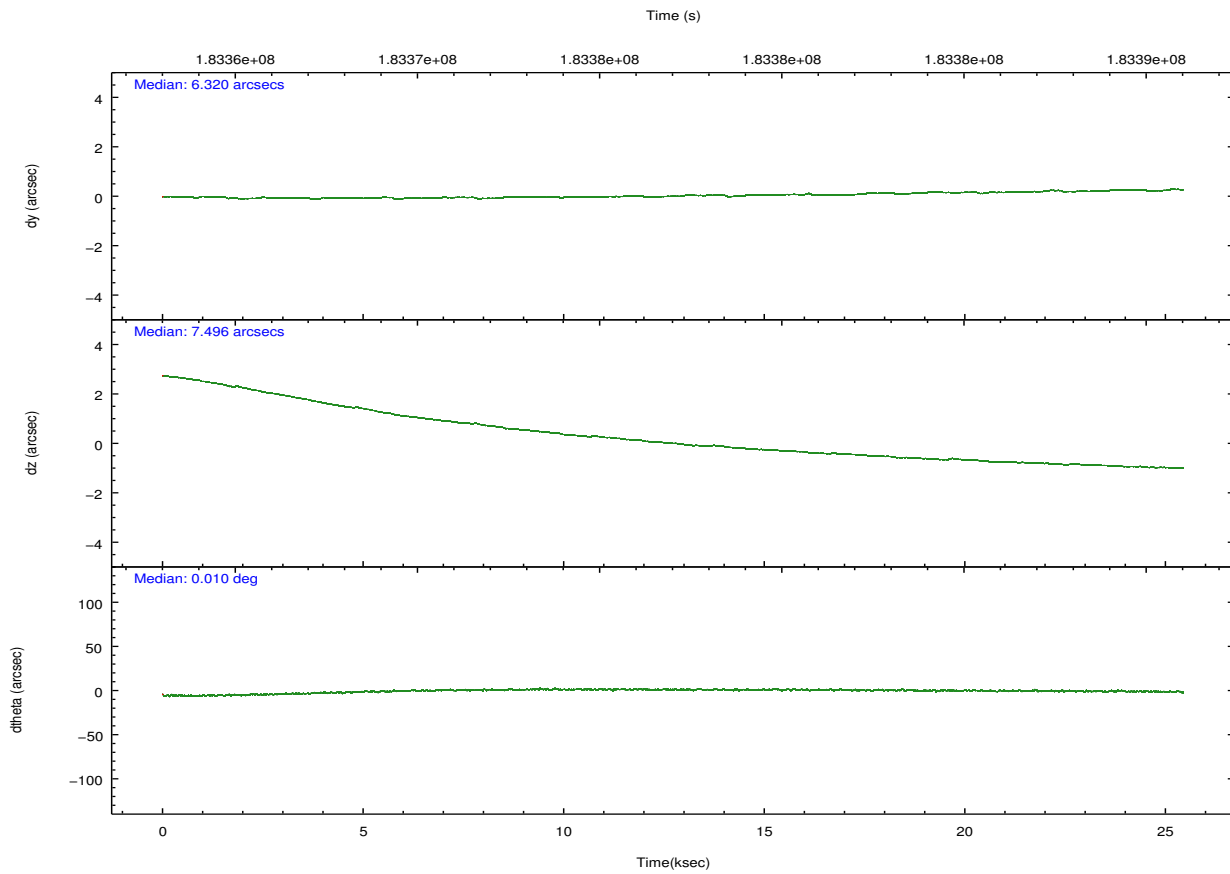
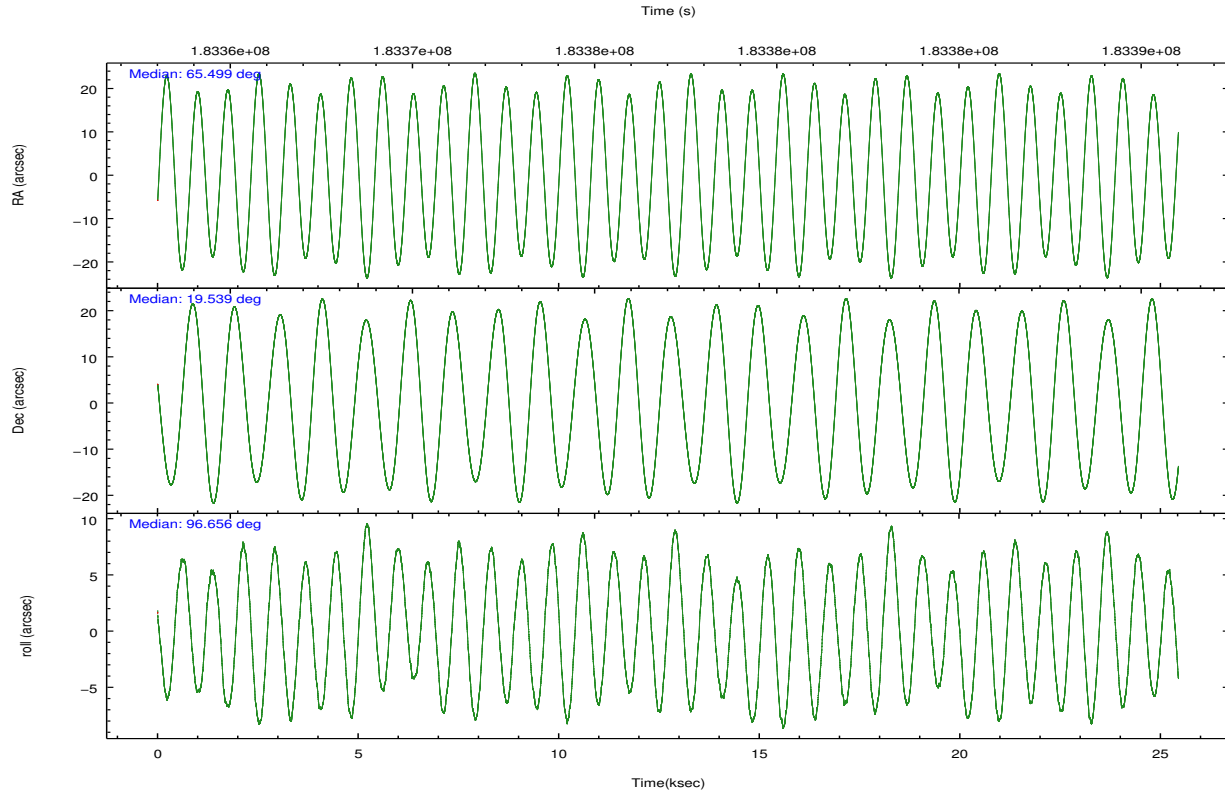
#### Level 1 Events

	<b>segment 0</b>
level 1 events	4483615
rejected events	19231
rejected %	0%

## 2.2 Compared Parameters

Parameter	Planned	Actual	Parameter	Planned	Actual
Instrument	HRC	HRC	Obspar format version number	7	7
Detector	HRC-I	HRC-I	Obspar file type	PREDICTED	ACTUAL
Grating	NONE	NONE	Obspar update status	OVERRIDE	OVERRIDE
Data mode	OBSERVING	OBSERVING			
Observation mode	POINTING	POINTING			
[deg] Pointing RA	65.516423	65.49872260497928			
[deg] Pointing Dec	19.517755	19.53906981975747			
[deg] Pointing Roll	96.753733	96.66416976335374			
[mm] SIM focus pos	-1.038866356238299	-1.038866356238299			
[mm] SIM defocus	0.00142623211714632	0.00142623211714632			
[mm] SIM translation stage pos	126.9829799899862	126.9829799899862			
[mm] SIM translation stage offset	0.002514315301596071	0.002514315301596071			
[s] Observation start time (MET)	183364291.184000	183364291.184			
Observation start date	2003-10-24T06:30:27	2003-10-24T06:31:31			
[s] Observation end time (MET)	183389739.000000	183389739			
Observation end date	2003-10-24T13:35:39	2003-10-24T13:35:38			

## 2.3 Aspect

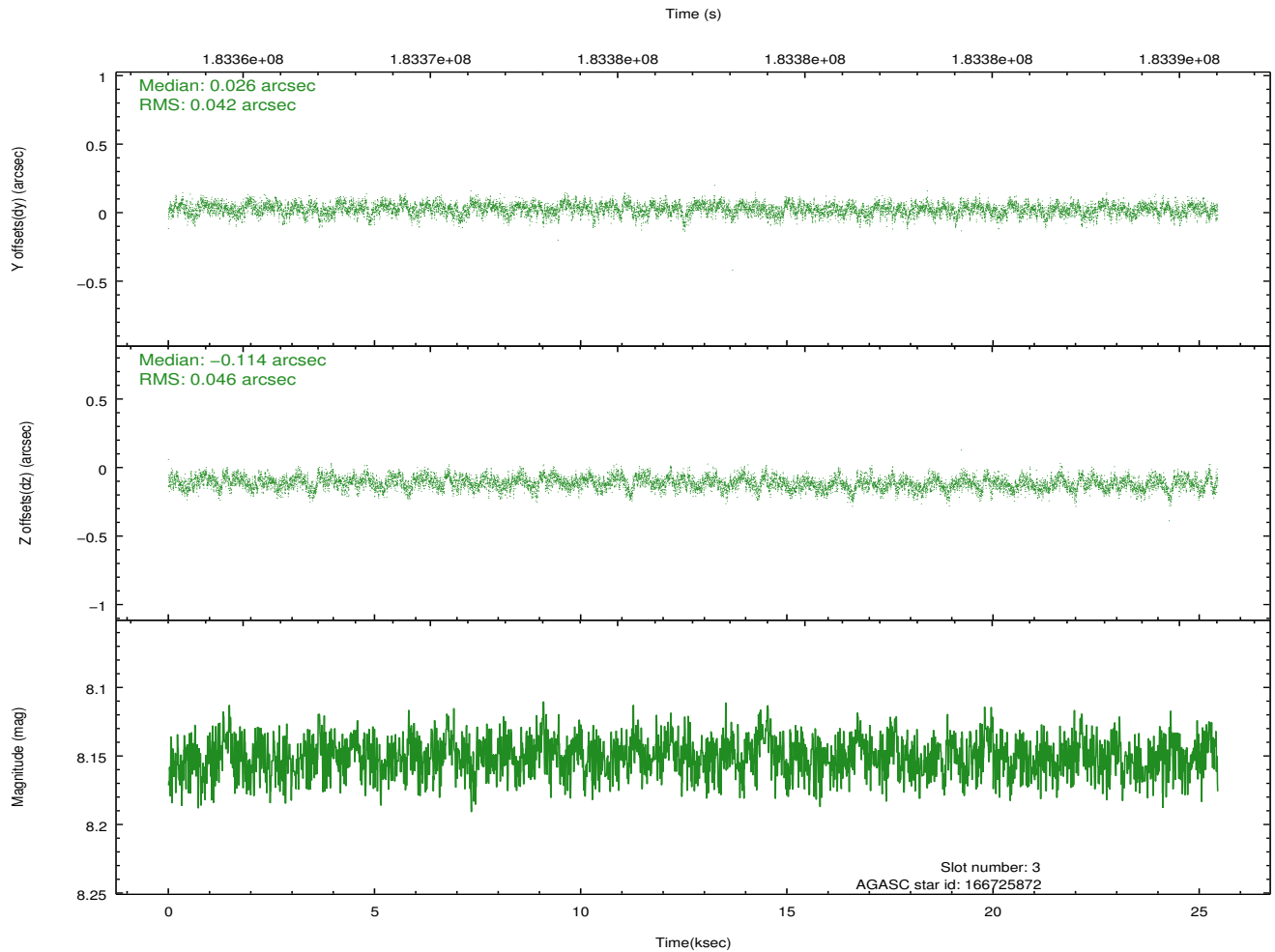
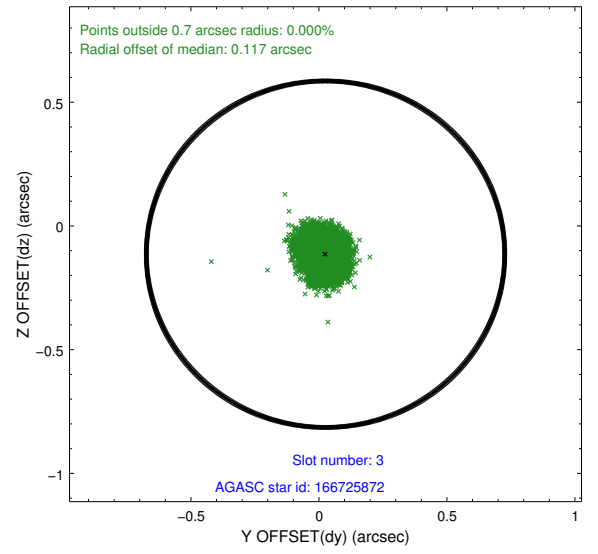
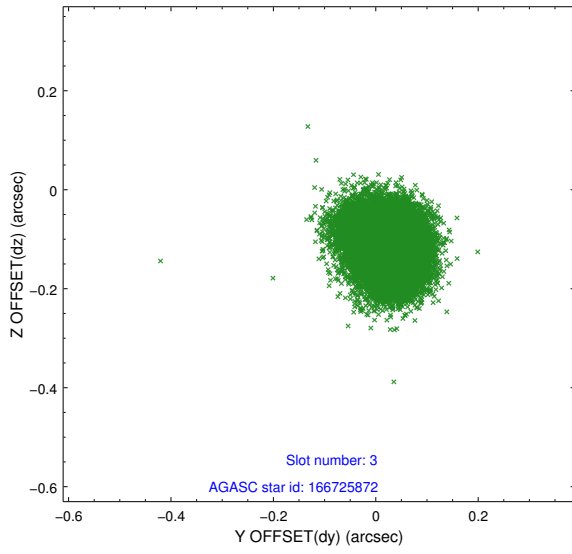


### Slot Statistics

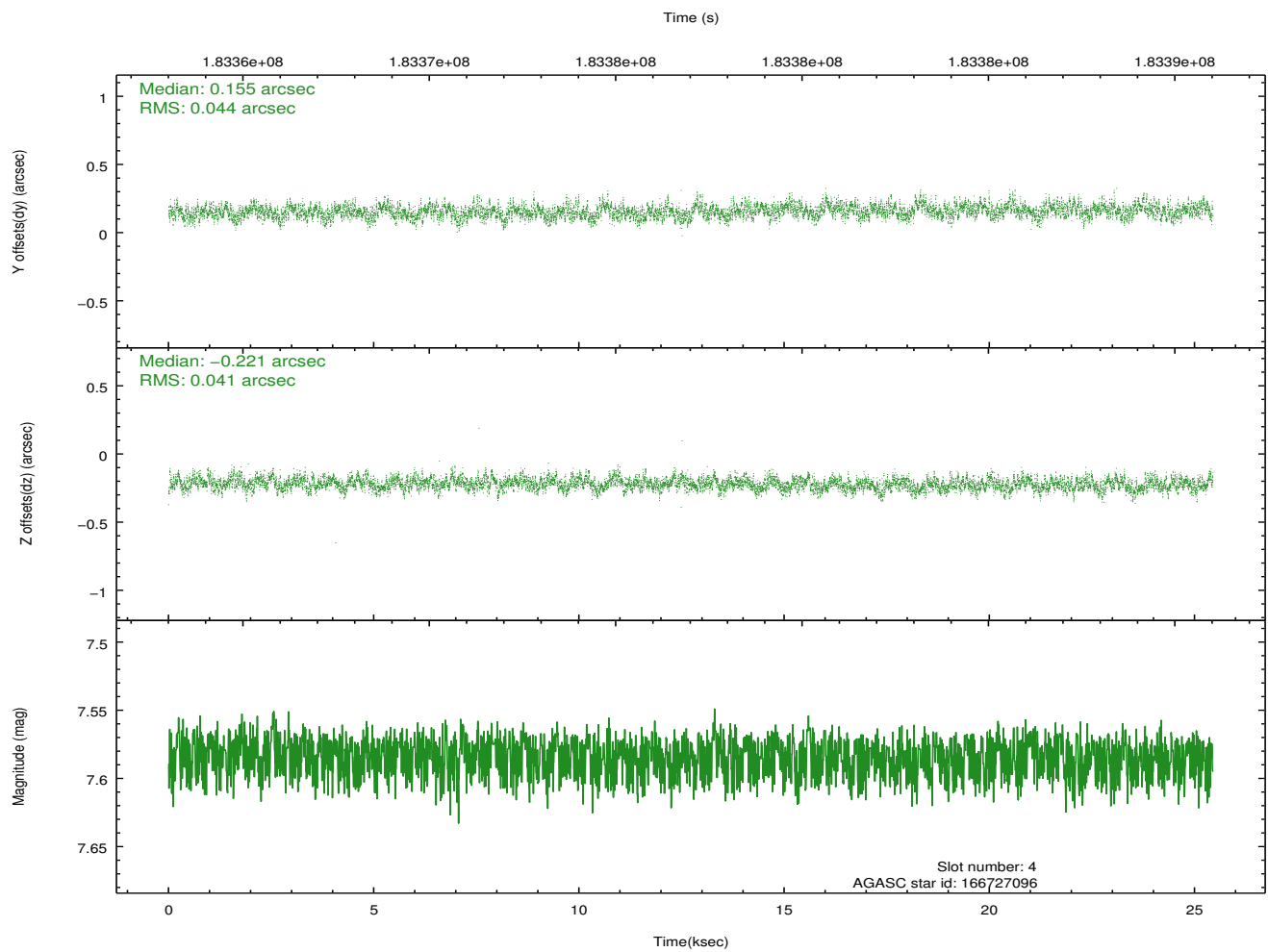
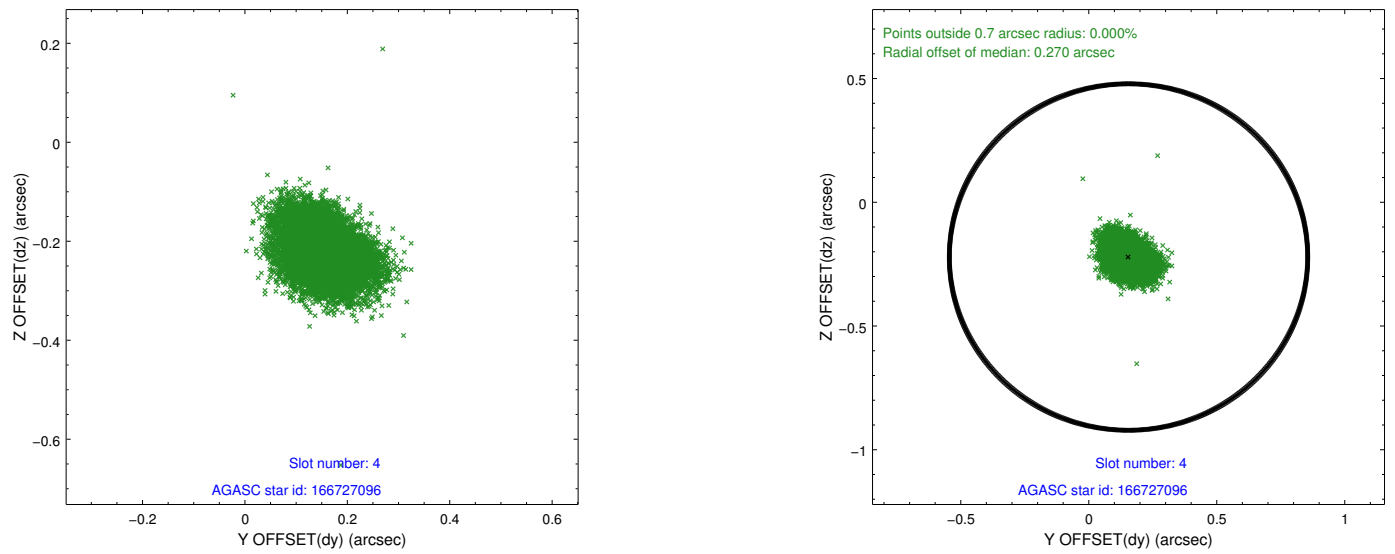
slot	status	id	mag	n_pts	med_dy	med_dz	dr1	dr2	ra	dec	mean_y	mean_z
0	FID	HRC-I-1	7.02	6207	0.042	-0.032	0.023	0.040	0.000000	0.000000	-761.93	-1295.68
1	FID	HRC-I-3	7.12	6207	-0.052	-0.020	0.018	0.049	0.000000	0.000000	-1190.56	1008.69
2	FID	HRC-I-4	7.07	6207	0.127	-0.035	0.015	0.040	0.000000	0.000000	1280.83	1006.59
3	GUIDE	166725872	8.15	12414	0.026	-0.114	0.066	0.108	64.875655	19.947812	1796.62	1970.91
4	GUIDE	166727096	7.58	12412	0.155	-0.221	0.064	0.106	65.054029	19.233473	-829.19	1680.28
5	GUIDE	166857688	9.11	12406	0.141	0.272	0.096	0.153	66.140840	19.967901	1365.41	-2288.69
6	GUIDE	166727920	9.14	12408	-0.062	-0.193	0.096	0.149	64.764778	19.856718	1516.59	2383.05
7	GUIDE	166860736	9.26	12388	-0.260	0.256	0.101	0.171	66.100337	19.958939	1348.80	-2148.75

## 2.4 Star Slots

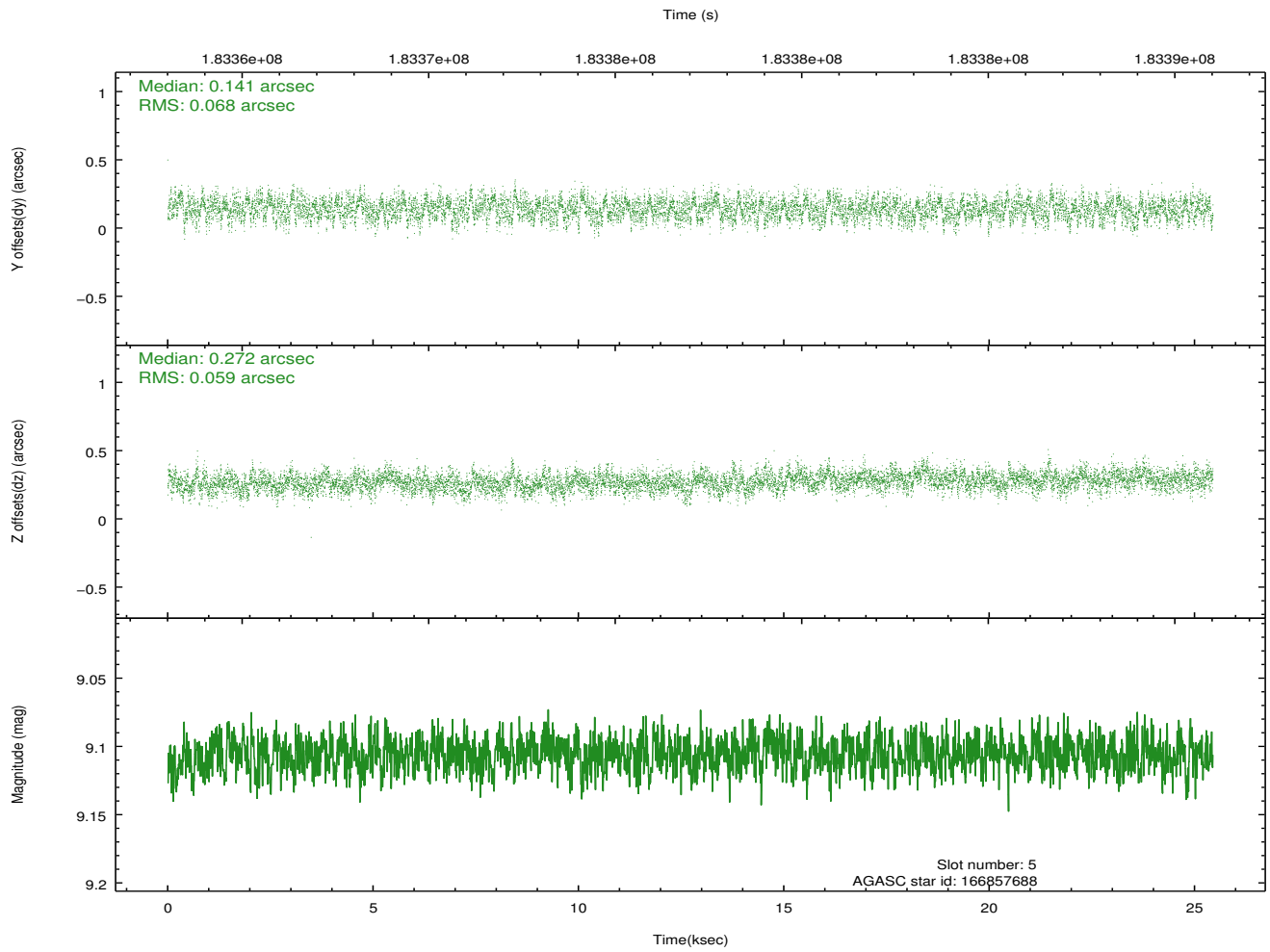
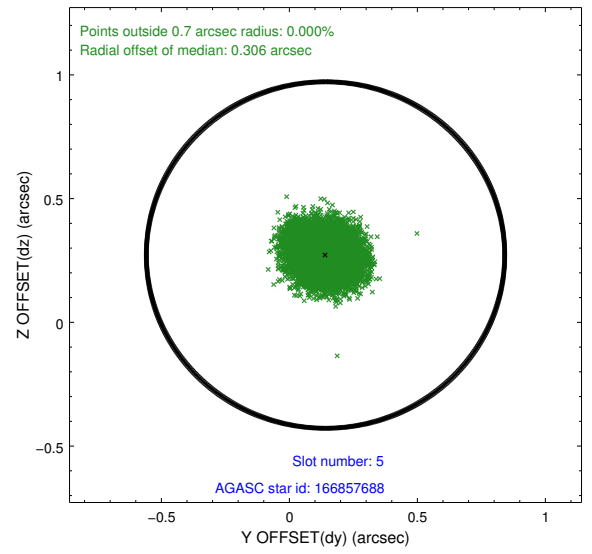
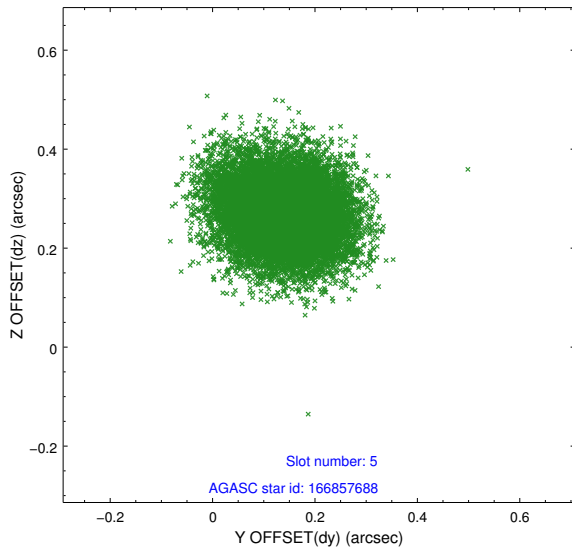
### 2.4.1 Slot 3



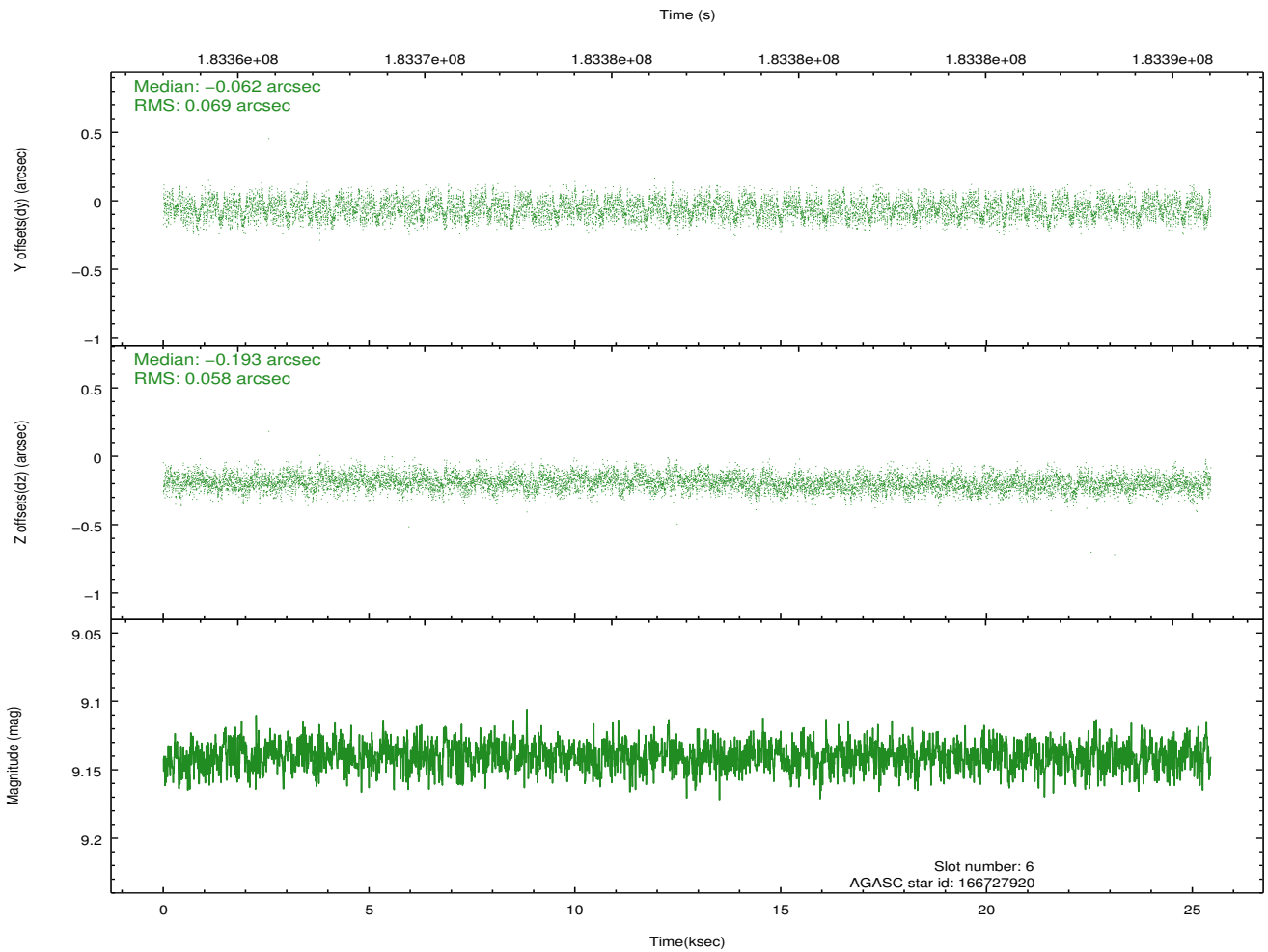
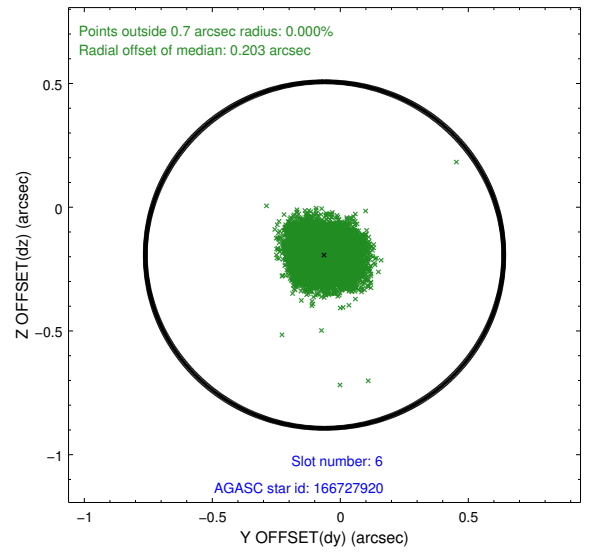
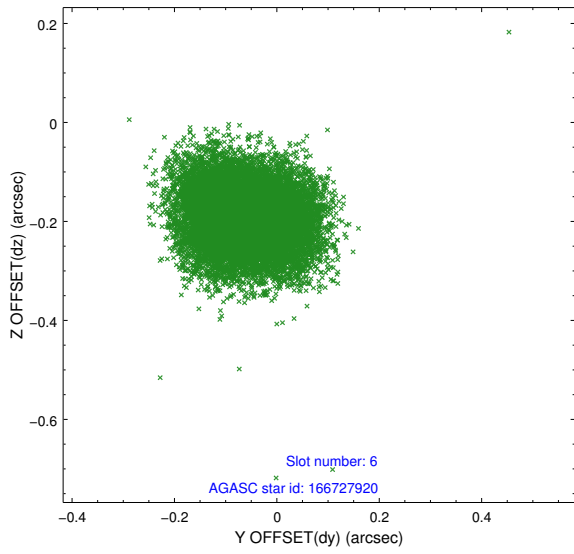
## 2.4.2 Slot 4



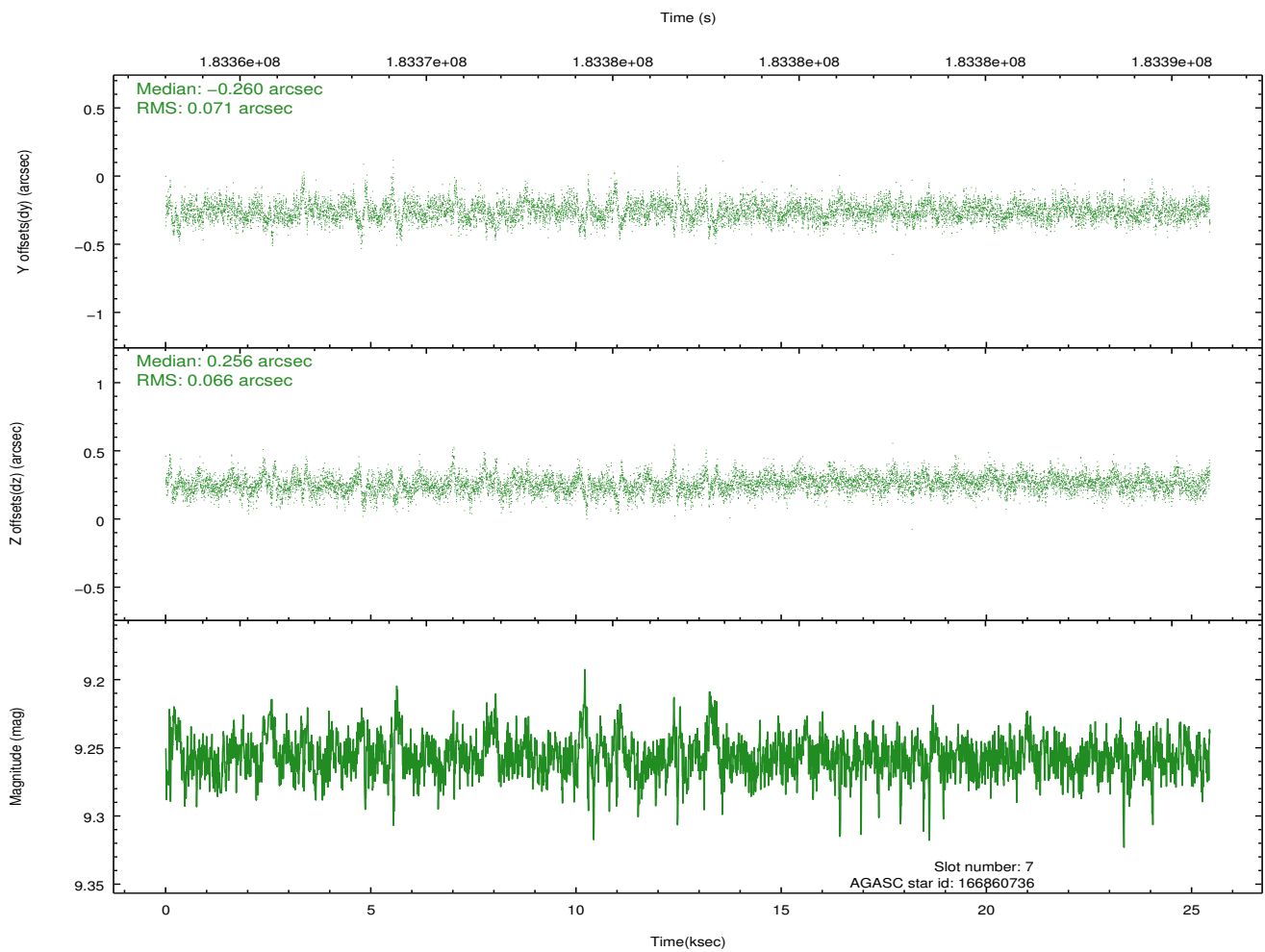
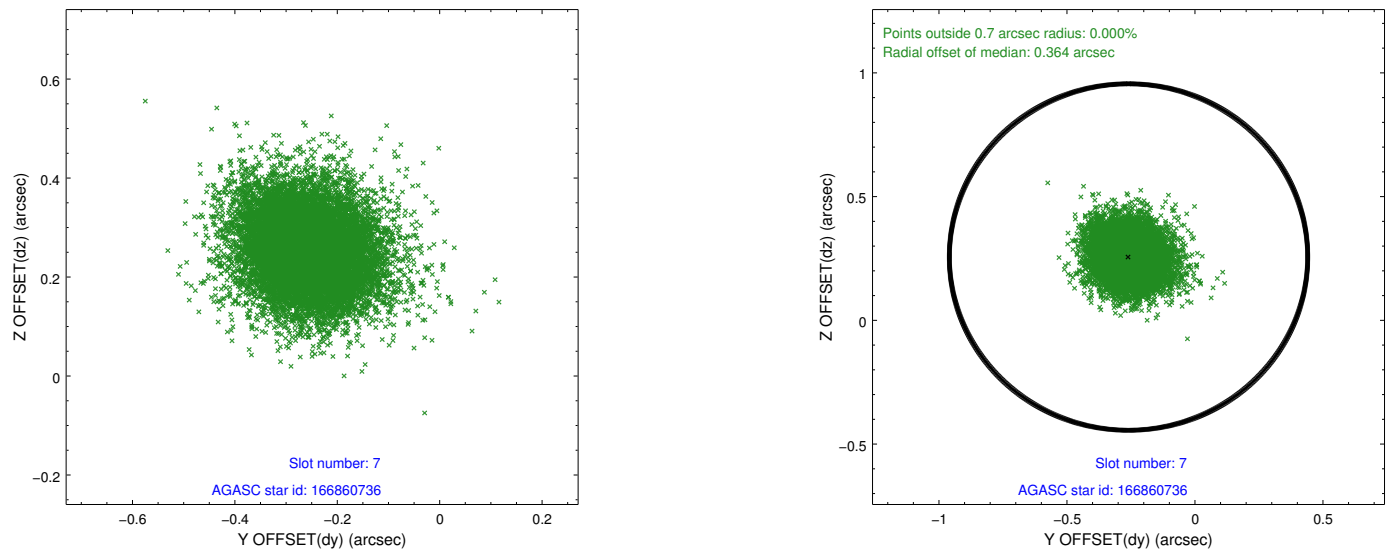
### 2.4.3 Slot 5



### 2.4.4 Slot 6

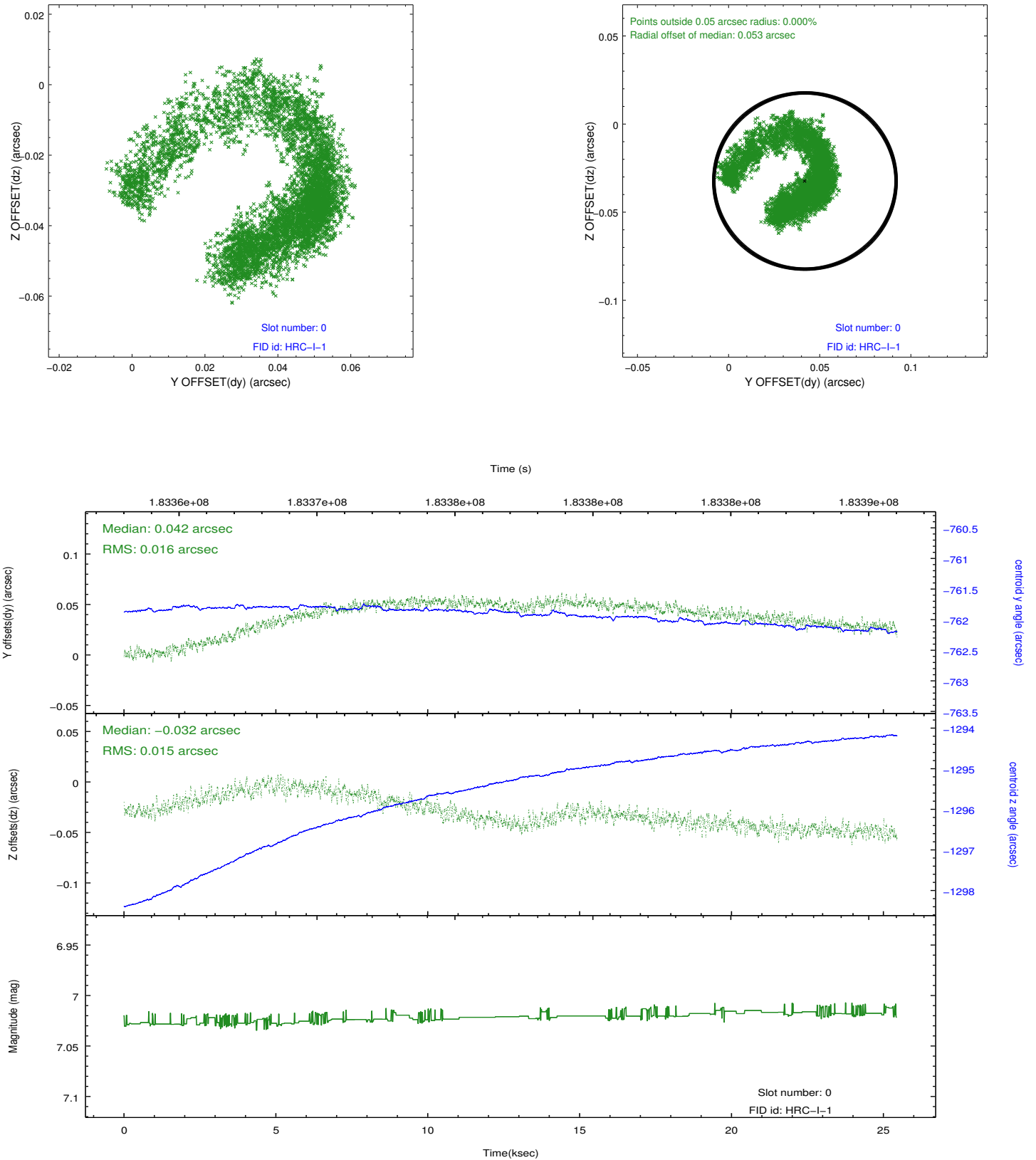


## 2.4.5 Slot 7

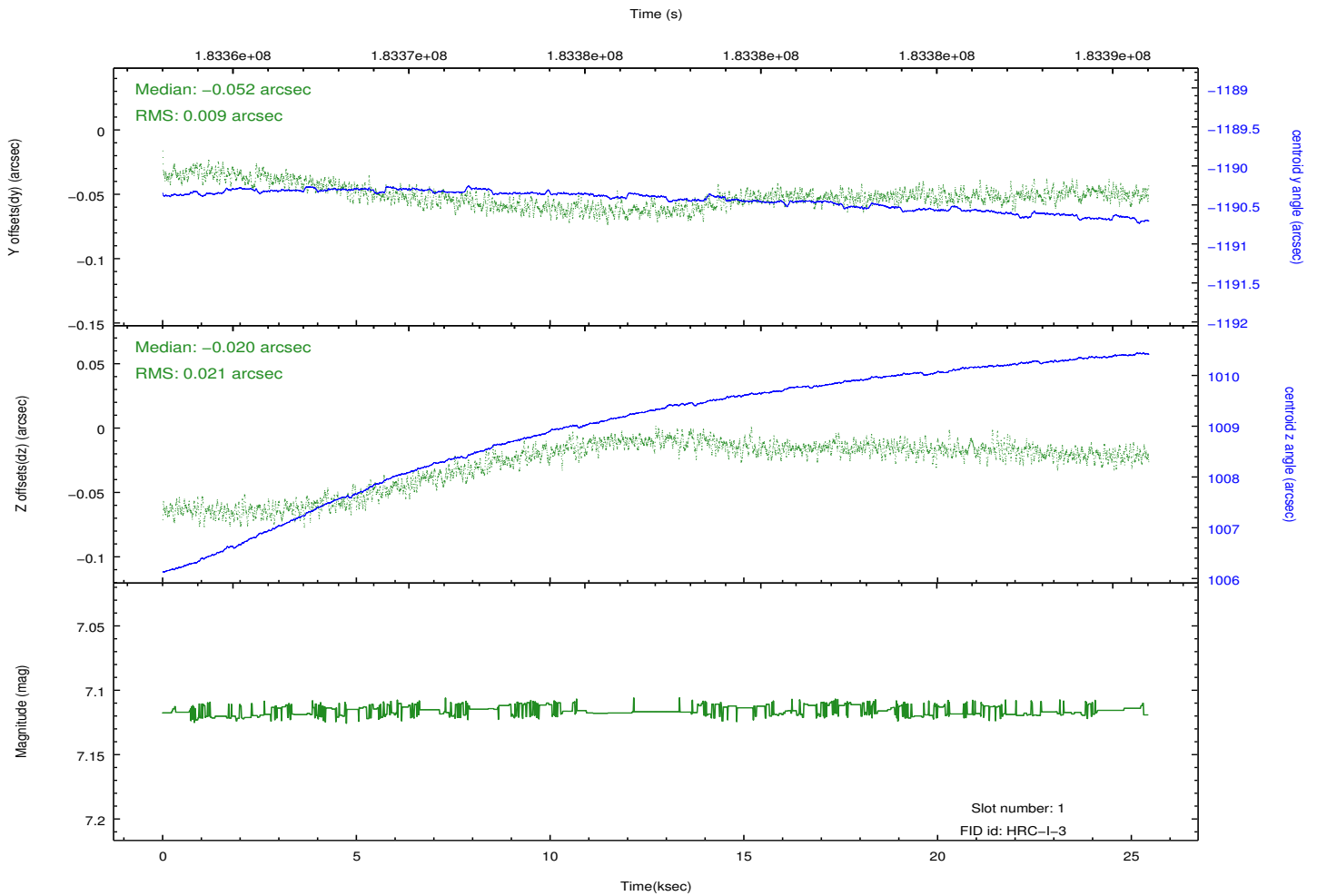
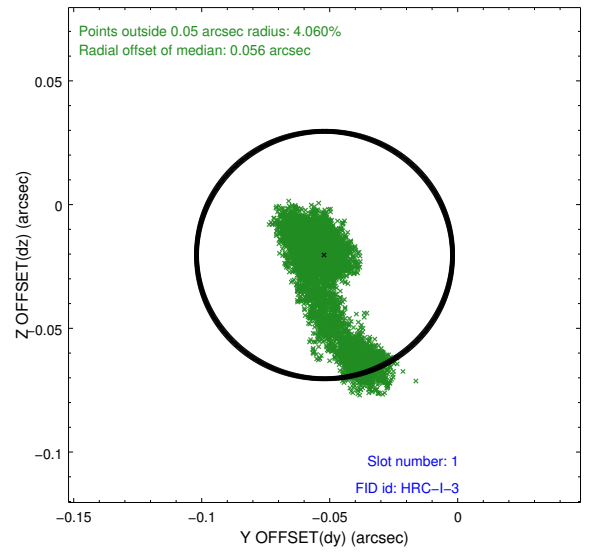
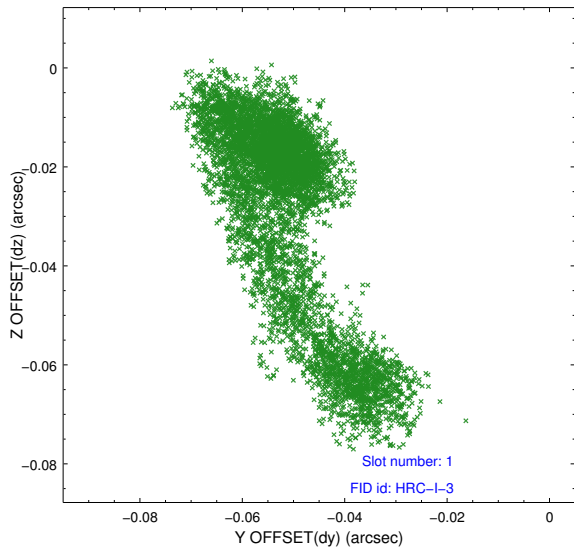


## 2.5 FID Slots

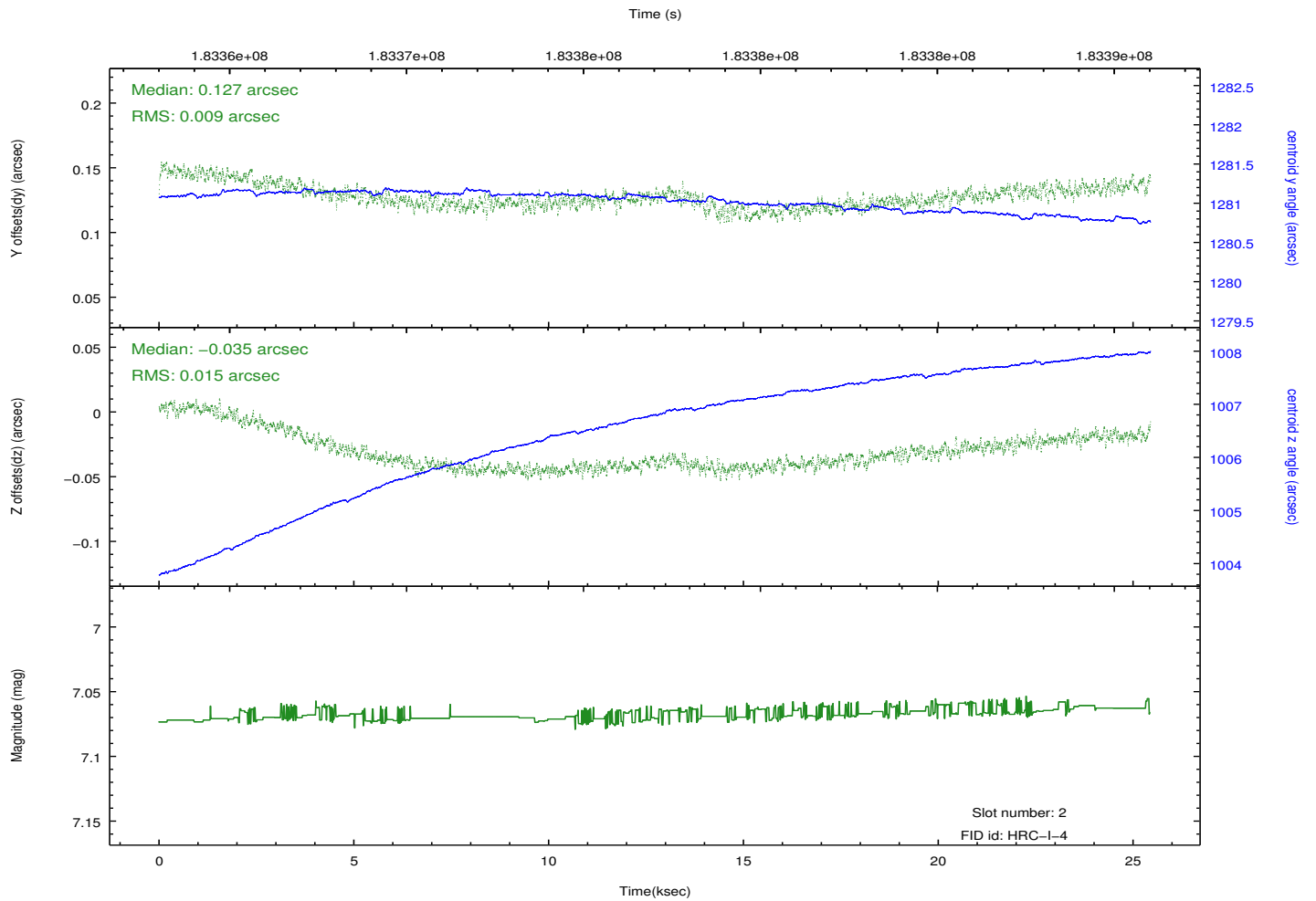
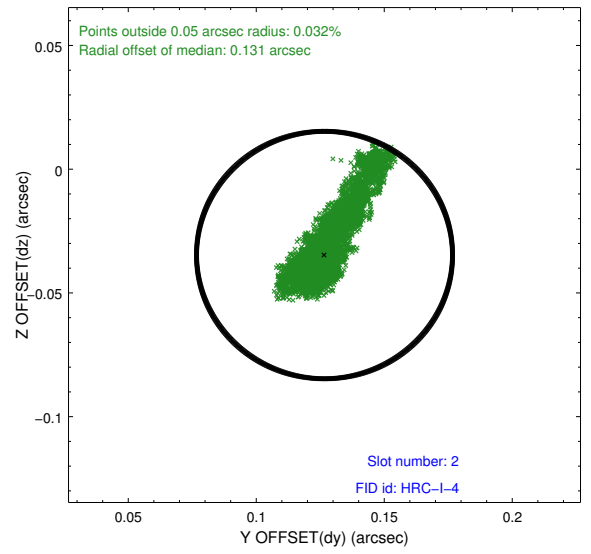
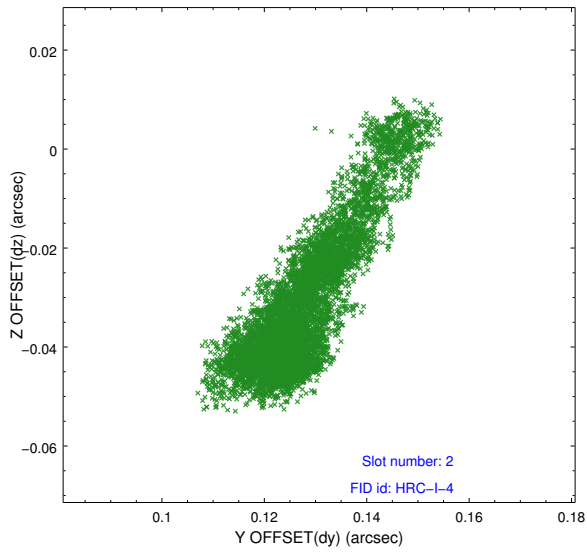
### 2.5.1 Slot 0



## 2.5.2 Slot 1



### 2.5.3 Slot 2



# A Summary

## A.1 Status

V&V Scientist	Jen Lauer
V&V Date (YYYY-MM-DD)	2013.02.19
V&V Edition	1
V&V Disposition and Status	OK
V&V Charge Time	25.469

## A.2 Comments

Charge time for this ObsId remains at previous value of 25.469 ks although with the current processing the charge time would have been 25.32 ksec.

=====

This observation was interrupted by safing of the science instruments onboard Chandra due to high solar radiation environment. The observation was interrupted at 2003-10-24T13:34. Due to a high radiation environment, the instruments were safed and the observation terminated early. This observation has been reprocessed so that the aspect solution correctly handles the instrument safing and maneuver activities at the end of the observation.