

V&V Reference Report

L2 ASCDS Version : 8.4.5

Observation 3802 - L2 Version 3
Chandra X-Ray Center

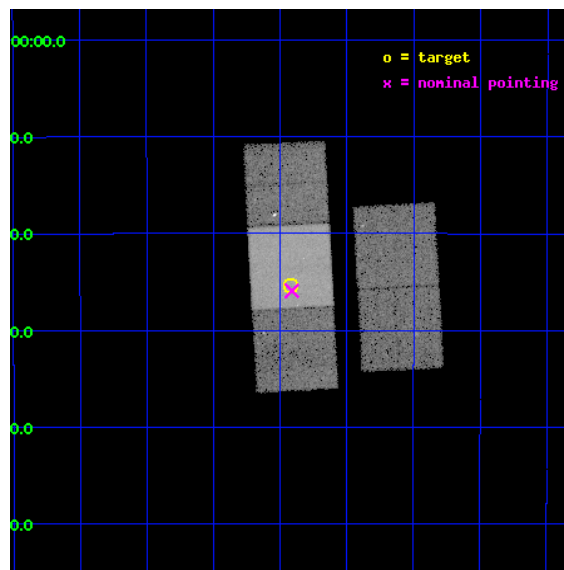
L2 Processing Date : Nov 1 2012

Contents

1	Front	2
2	OBI	3
2.1	OBI	3
2.1.1	Images	3
2.1.2	Bias	3
2.1.3	Parameters	4
2.1.4	Events	4
2.2	Compared Parameters	5
2.3	Aspect	6
2.4	Star Slots	9
2.4.1	Slot 3	9
2.4.2	Slot 4	10
2.4.3	Slot 5	11
2.4.4	Slot 6	12
2.4.5	Slot 7	13
2.5	FID Slots	14
2.5.1	Slot 0	14
2.5.2	Slot 1	15
2.5.3	Slot 2	16
A	Summary	17
A.1	Status	17
A.2	Comments	17

1 Front

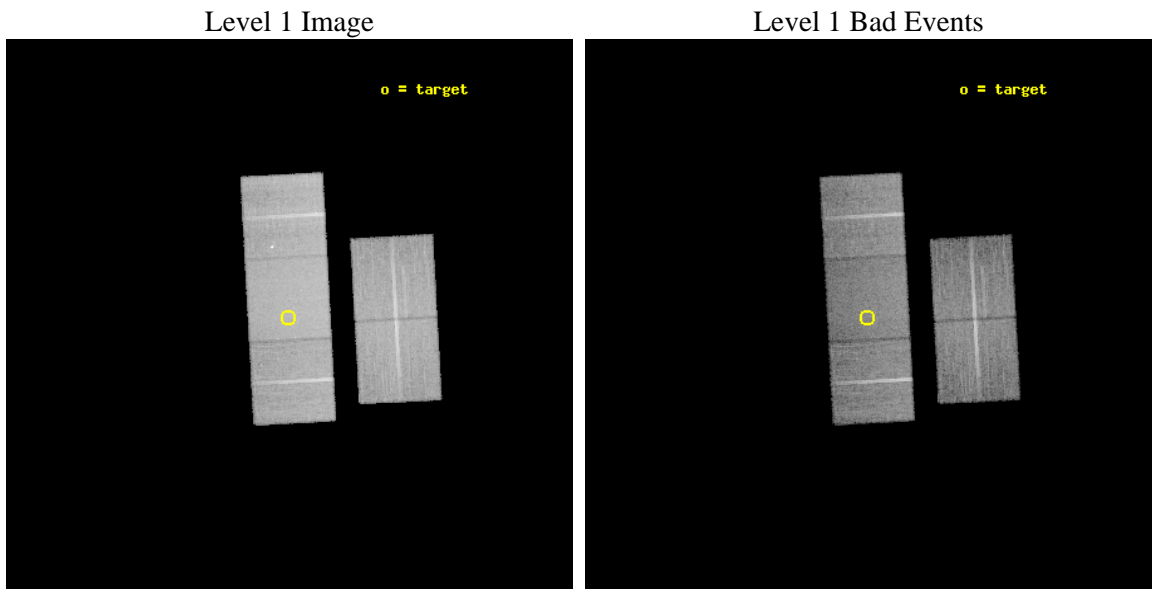
seq_num	400289	Sequence number
obs_id	3802	Observation id
title	LOCALIZING THE NEUTRON STAR X-RAY TRANSIENT EXO 1747-214	Proposal
observer	Dr. John Tomsick	Principal investigator
object	EXO 1747-214	Source name
dtcycle	0	
cycle	P	events from which exps? Prim/Second/Both
ra_targ	267.605417	Observer's specified target RA [deg]
dec_targ	-21.422694	Observer's specified target Dec [deg]
ra_nom	267.60305334389	Nominal RA [deg]
dec_nom	-21.432106781157	Nominal Dec [deg]
roll_nom	266.8951125894	Nominal Roll [deg]
revision	3	Processing version of data
ontime	24809.095111042	Sum of GTIs [s]
livetime	24484.946019226	Livetime [s]
ontime2	24787.108359456	Sum of GTIs [s]
ontime3	24799.672200412	Sum of GTIs [s]
ontime6	24796.531230181	Sum of GTIs [s]
ontime7	24809.095111042	Sum of GTIs [s]
ontime8	24804.228934348	Sum of GTIs [s]
l2events	155990	Number of level 2 events



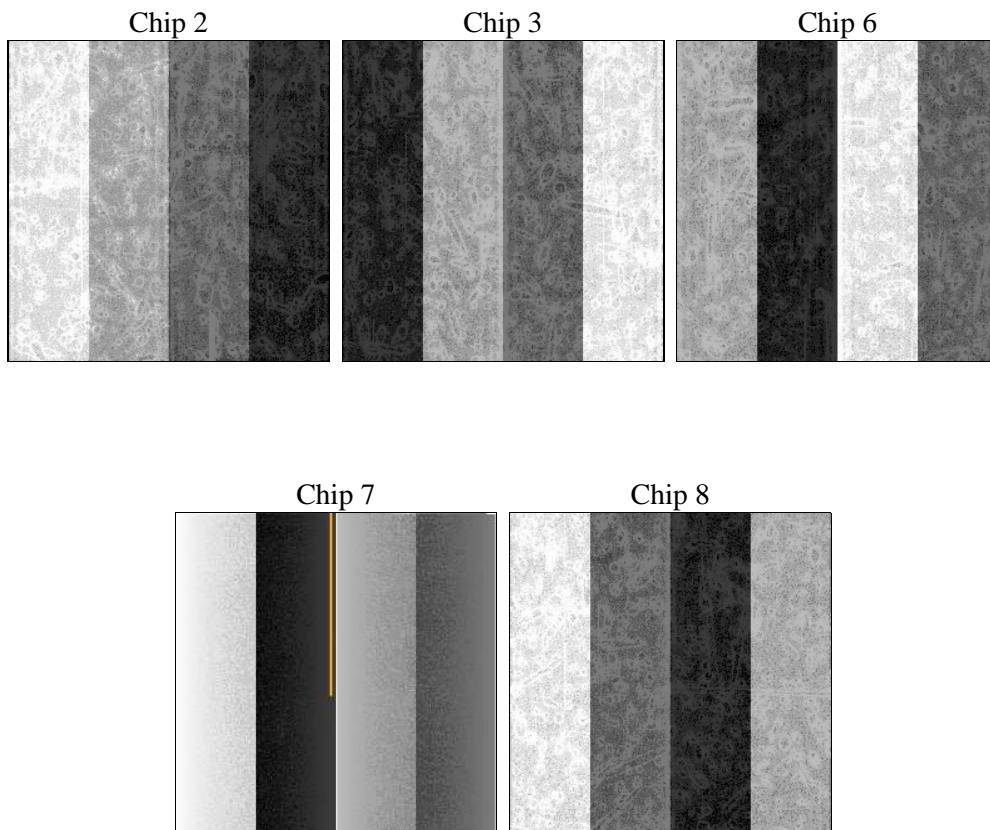
2 OBI

2.1 OBI

2.1.1 Images



2.1.2 Bias



2.1.3 Parameters

obi_num	0	Obi number	sched_exp_time	24709.000000	[s] Scheduled observation exposure time
ascdsver	8.4.5	Processing system revision	ontime	24809.095111042	Sum of GTIs [s]
caldbver	4.5.2	 	ontime2	24787.108359456	Sum of GTIs [s]
date	2012-11-01T11:07:53	Date and time of file creation	ontime3	24799.672200412	Sum of GTIs [s]
revision	3	Processing version of data	ontime6	24796.531230181	Sum of GTIs [s]
			ontime7	24809.095111042	Sum of GTIs [s]
			ontime8	24804.228934348	Sum of GTIs [s]
			l1events	881379	Number of level 1 events

2.1.4 Events

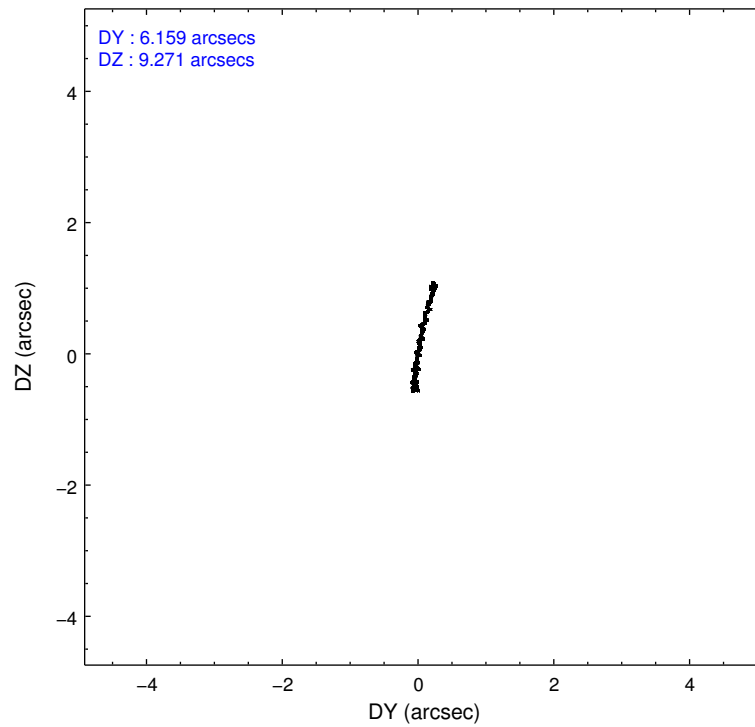
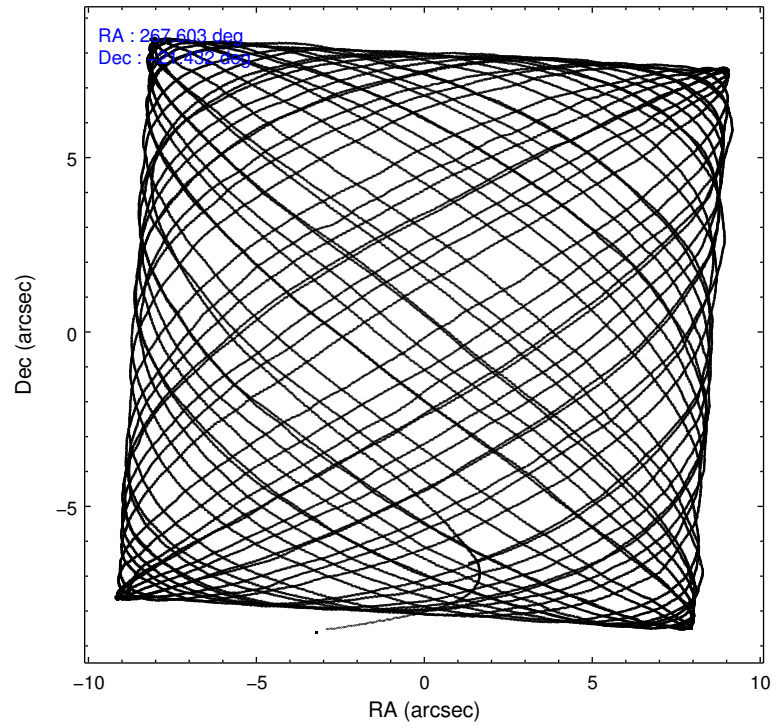
	ccd 2	ccd 3	ccd 6	ccd 7	ccd 8
level 1 events	154602	150998	160320	212214	203245
rejected events	135473	132174	140397	125600	159716
rejected %	87%	87%	87%	59%	78%

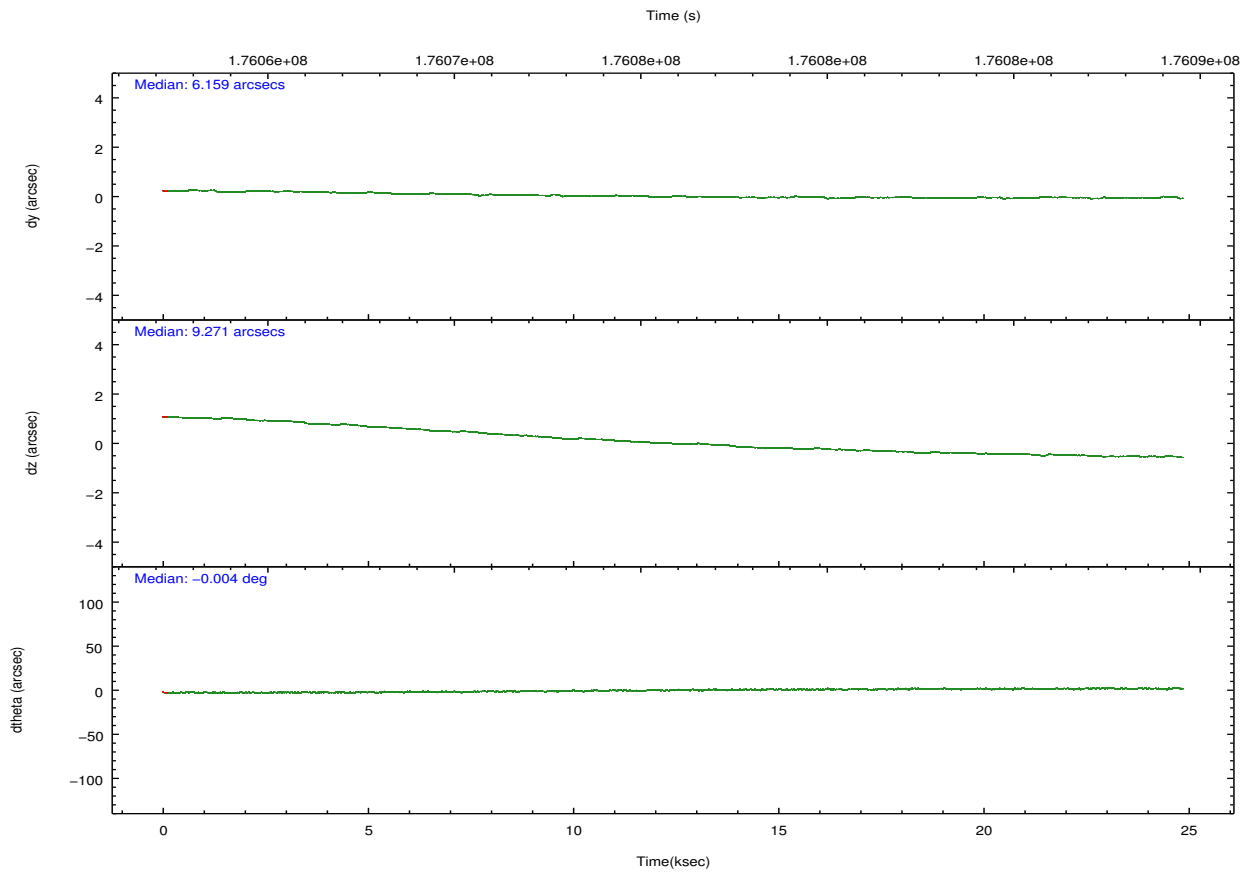
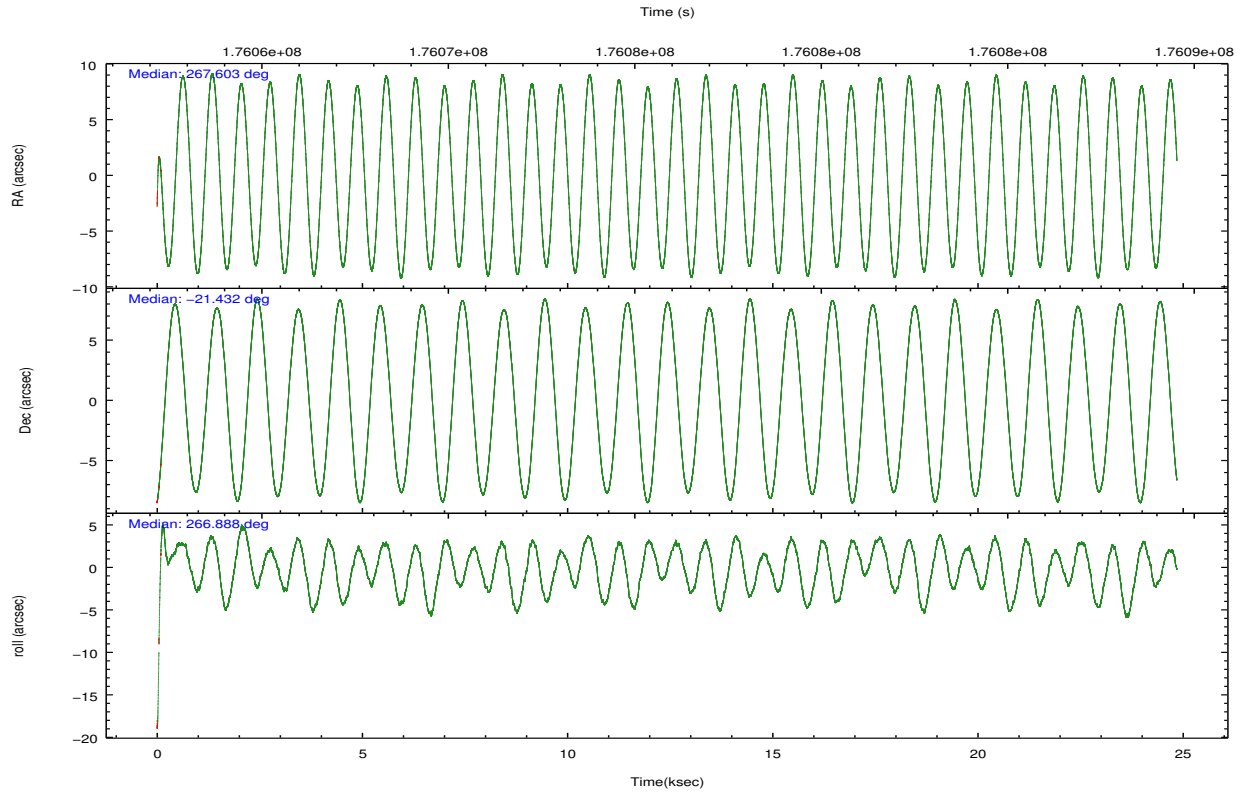
	ccd 2	ccd 3	ccd 6	ccd 7	ccd 8
grade 0 events	9160	8921	8825	8437	15519
	5%	5%	5%	3%	7%
grade 1 events	74	89	83	219	122
	0%	0%	0%	0%	0%
grade 2 events	3756	3494	3940	17634	9255
	2%	2%	2%	8%	4%
grade 3 events	1773	1861	1841	8025	4485
	1%	1%	1%	3%	2%
grade 4 events	1776	1812	1885	7953	4236
	1%	1%	1%	3%	2%
grade 5 events	5970	6752	7171	19960	9252
	3%	4%	4%	9%	4%
grade 6 events	2996	3084	3790	46129	10894
	1%	2%	2%	21%	5%
grade 7 events	129097	124985	132785	103857	149482
	83%	82%	82%	48%	73%

2.2 Compared Parameters

Parameter	Planned	Actual	Parameter	Planned	Actual
Instrument	ACIS	ACIS	Obspar format version number	7	7
Detector	ACIS-23678	ACIS-23678	Obspar file type	PREDICTED	ACTUAL
Grating	NONE	NONE	Obspar update status	NONE	UPDATED
Data mode	VFAINT	VFAINT	Number of optional ACIS chips dropped	0	0
Observation mode	POINTING	POINTING	On-chip summing requested	N	N
[deg] Pointing RA	267.589457	267.6030533438873	Subarray requested	NONE	NONE
[deg] Pointing Dec	-21.407988	-21.43210678115743	Alternating exposures requested	N	N
[deg] Pointing Roll	266.733524	266.8951125893994	[s] Primary exposure time	0.000000	3.1
[mm] SIM focus pos	-0.684267	-0.6828225247311905			
[mm] SIM defocus	0	0.001444936568705701			
[mm] SIM translation stage pos	-190.132523	-190.1400660498719			
[mm] SIM translation stage offset	0	0.00754346686406393			
[s] Observation start time (MET)	176063579.184000	176062394.1526			
Observation start date	2003-07-31T18:31:55	2003-07-31T18:13:14			
[s] Observation end time (MET)	176088288.184000	176088642.86622			
Observation end date	2003-08-01T01:23:44	2003-08-01T01:30:42			
Read mode	TIMED	TIMED			

2.3 Aspect



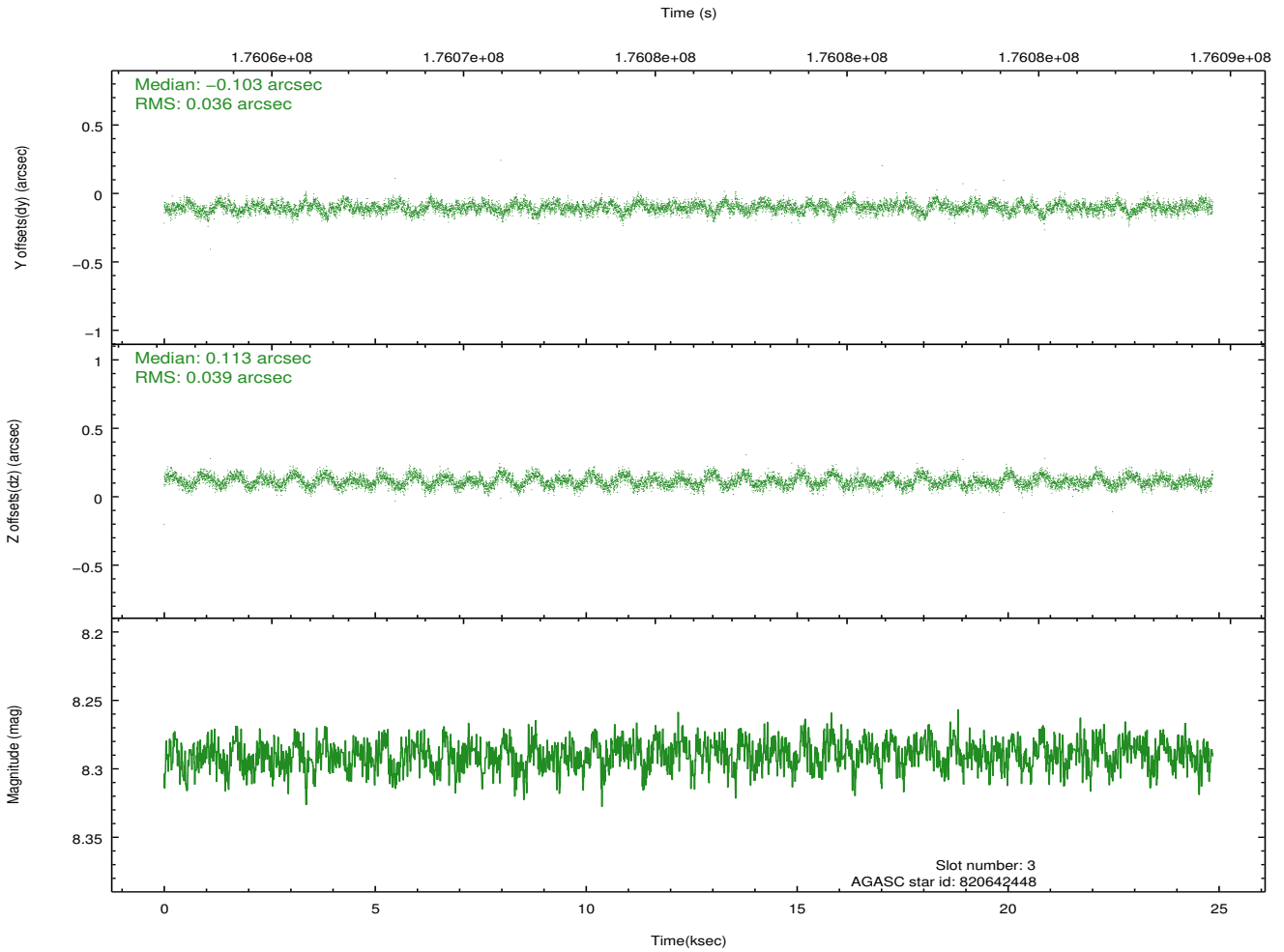
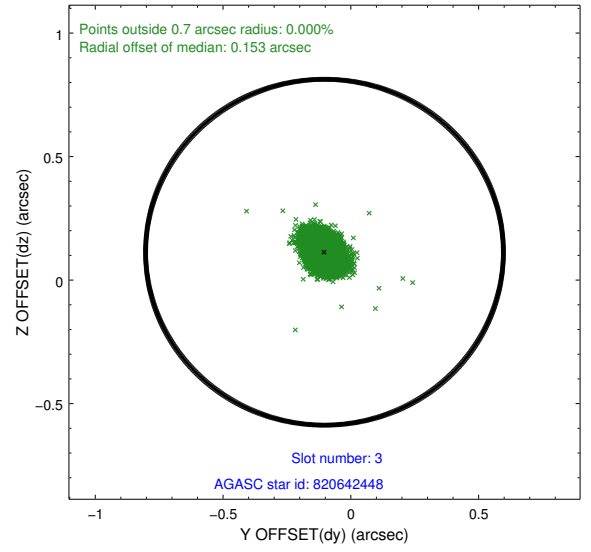
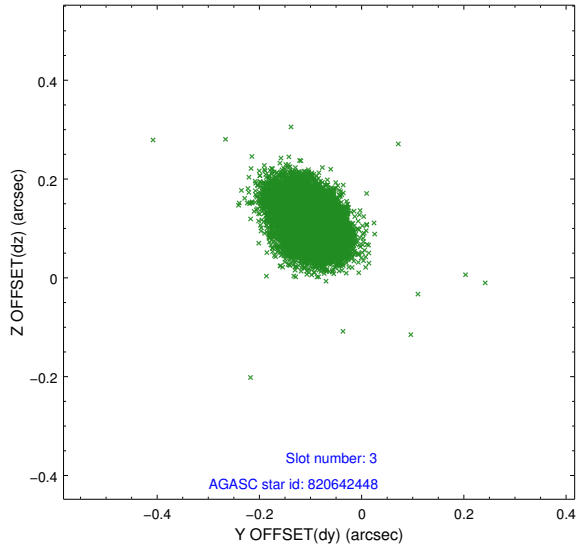


Slot Statistics

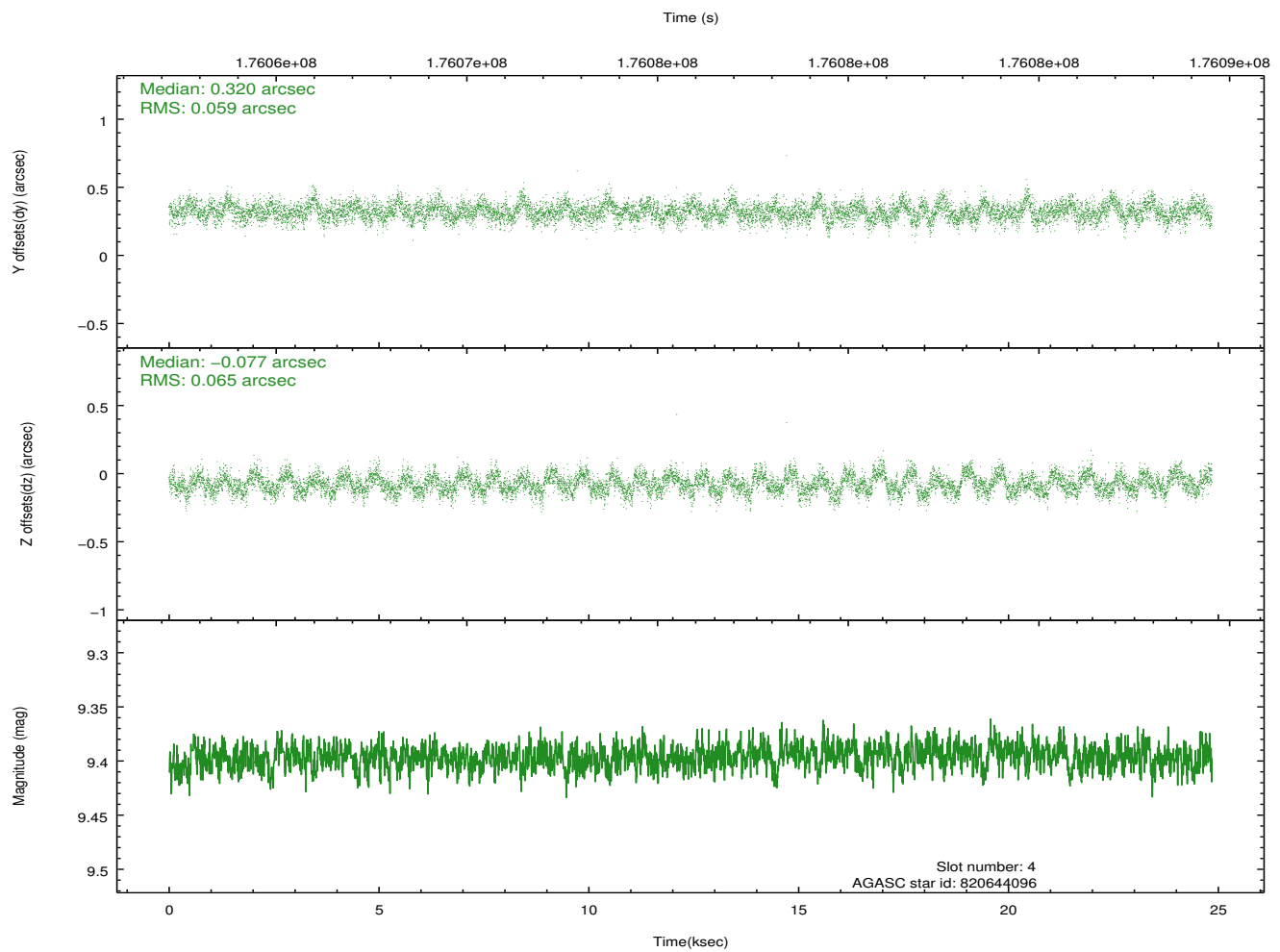
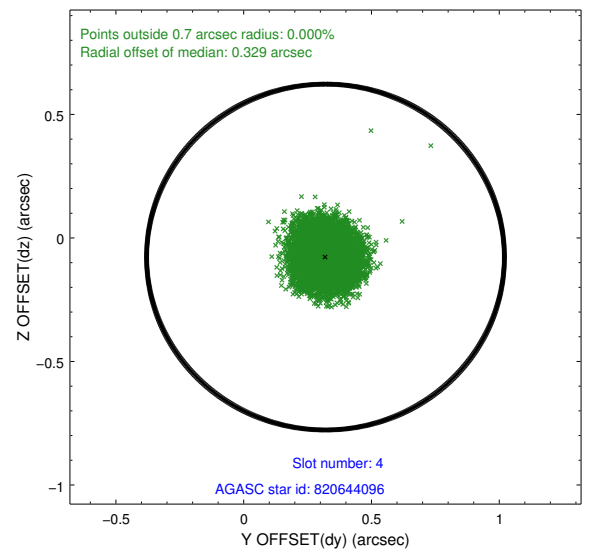
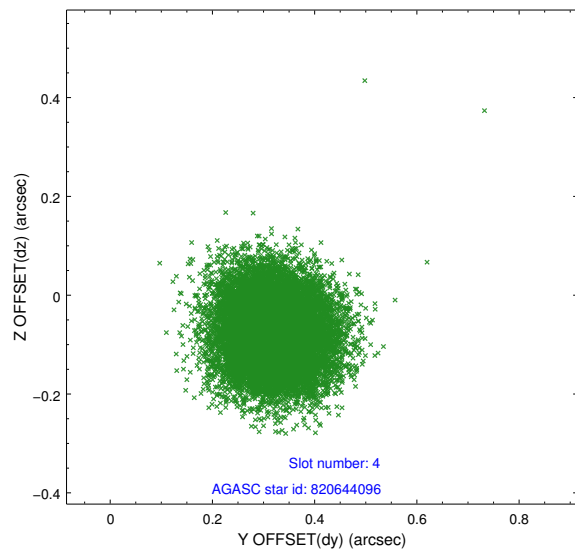
slot	status	id	mag	n_pts	med_dy	med_dz	dr1	dr2	ra	dec	mean_y	mean_z
0	FID	ACIS-S-2	7.10	6029	-0.051	-0.035	0.014	0.021	0.000000	0.000000	-758.97	-1730.65
1	FID	ACIS-S-4	7.20	6025	0.062	0.033	0.007	0.012	0.000000	0.000000	2154.36	177.79
2	FID	ACIS-S-5	7.23	6029	-0.043	0.010	0.014	0.022	0.000000	0.000000	-1811.66	171.55
3	GUIDE	820642448	8.29	12082	-0.103	0.113	0.056	0.091	267.956852	-21.058711	-1324.20	1160.89
4	GUIDE	820644096	9.40	12081	0.320	-0.077	0.094	0.148	267.663040	-21.931123	1866.75	353.09
5	GUIDE	820644800	8.85	12069	-0.163	0.001	0.063	0.102	267.803773	-20.964535	-1634.19	628.41
6	GUIDE	820645592	9.26	12069	0.052	-0.066	0.082	0.135	267.049228	-21.728492	1258.38	-1737.53
7	GUIDE	820776864	9.04	12070	-0.107	0.024	0.080	0.130	268.262469	-20.850704	-2127.07	2146.43

2.4 Star Slots

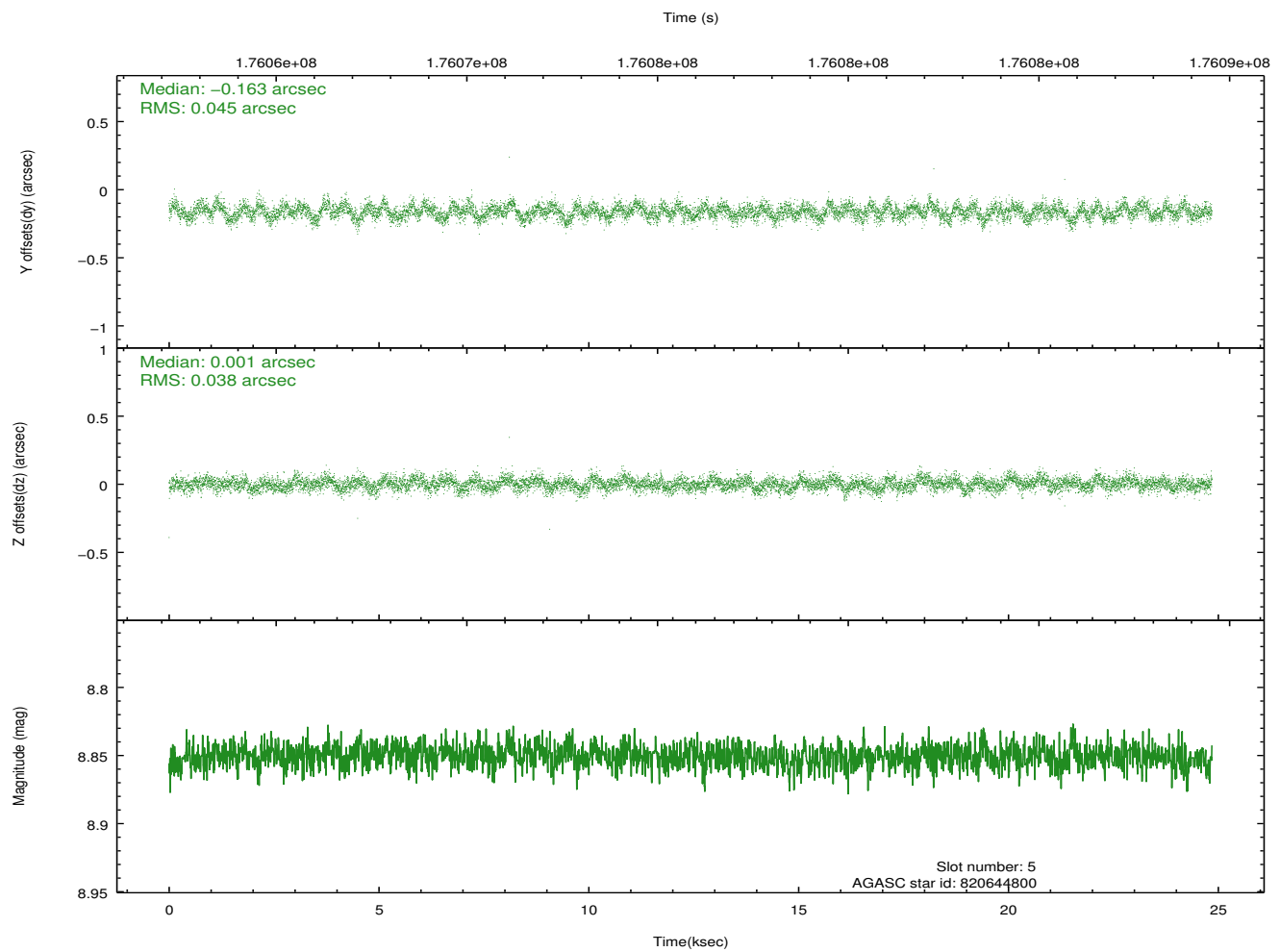
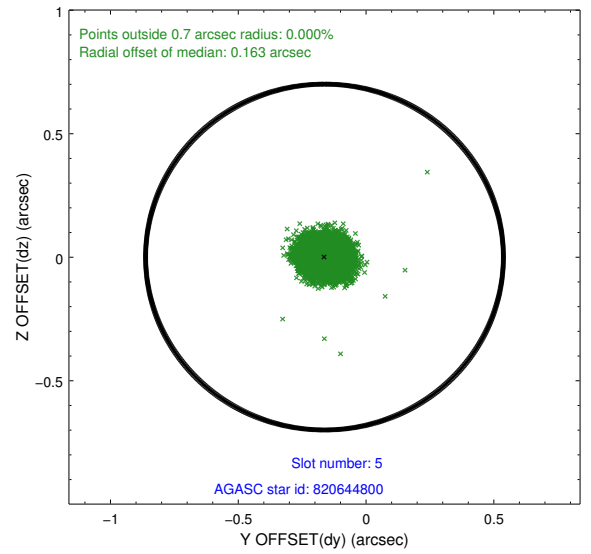
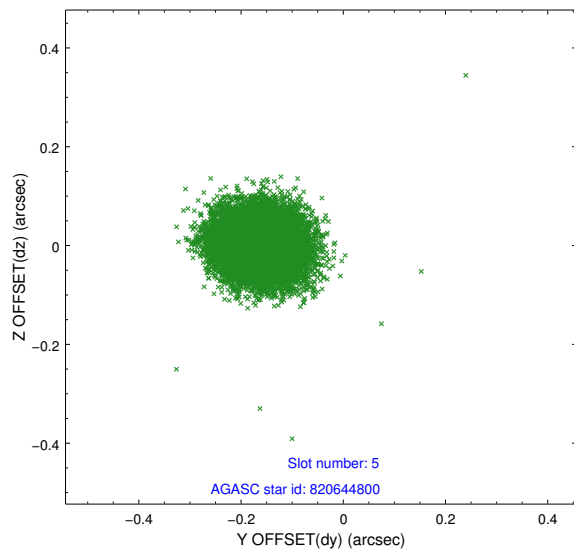
2.4.1 Slot 3



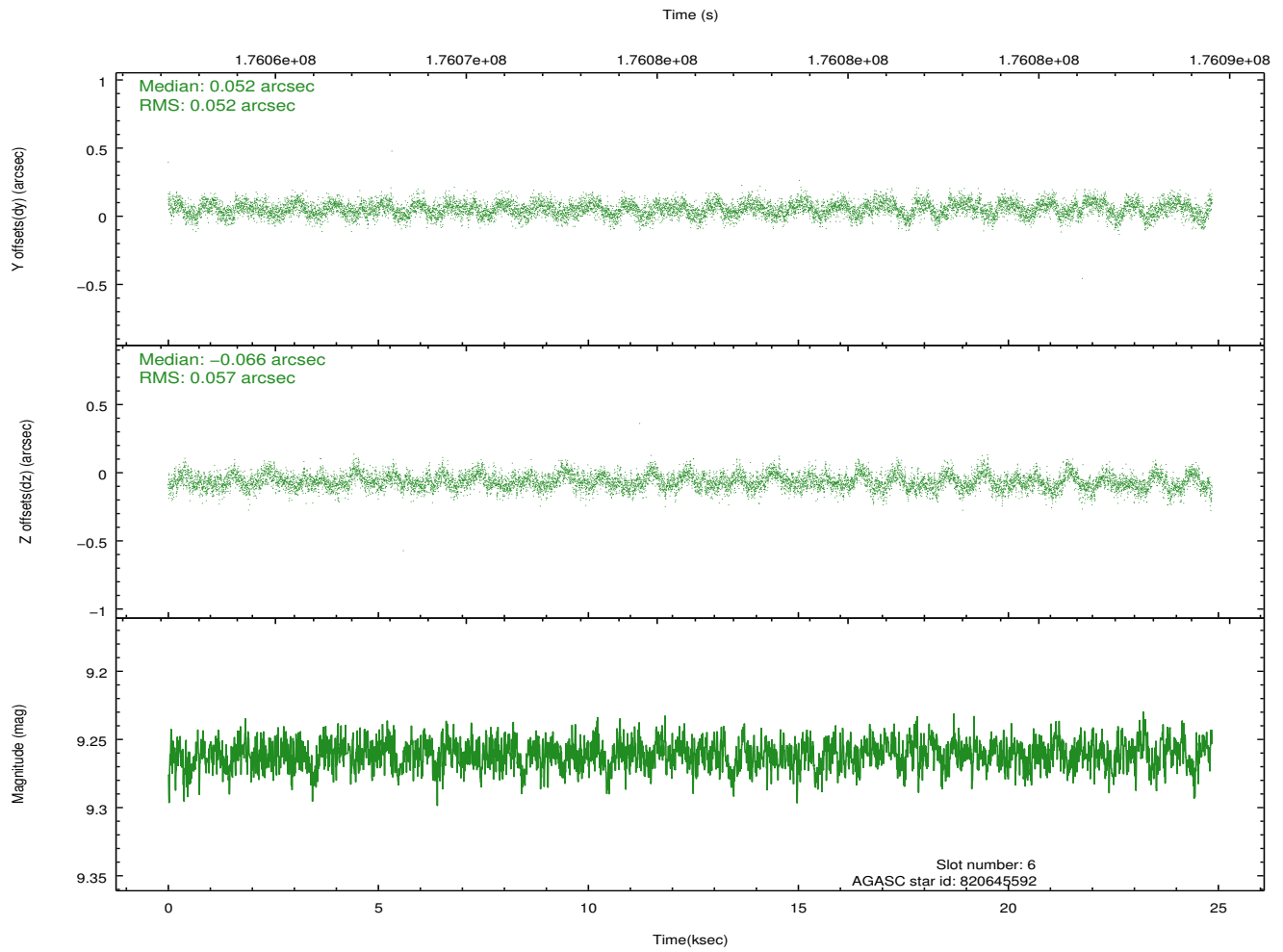
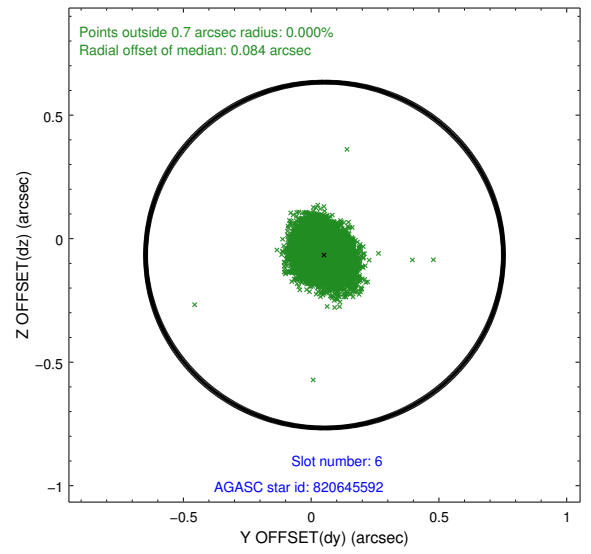
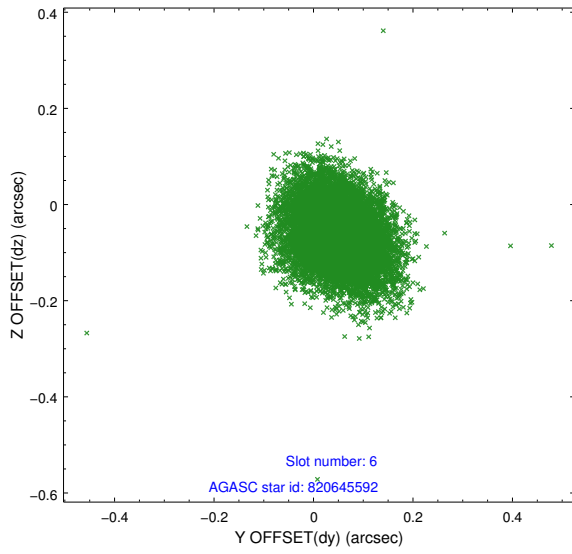
2.4.2 Slot 4



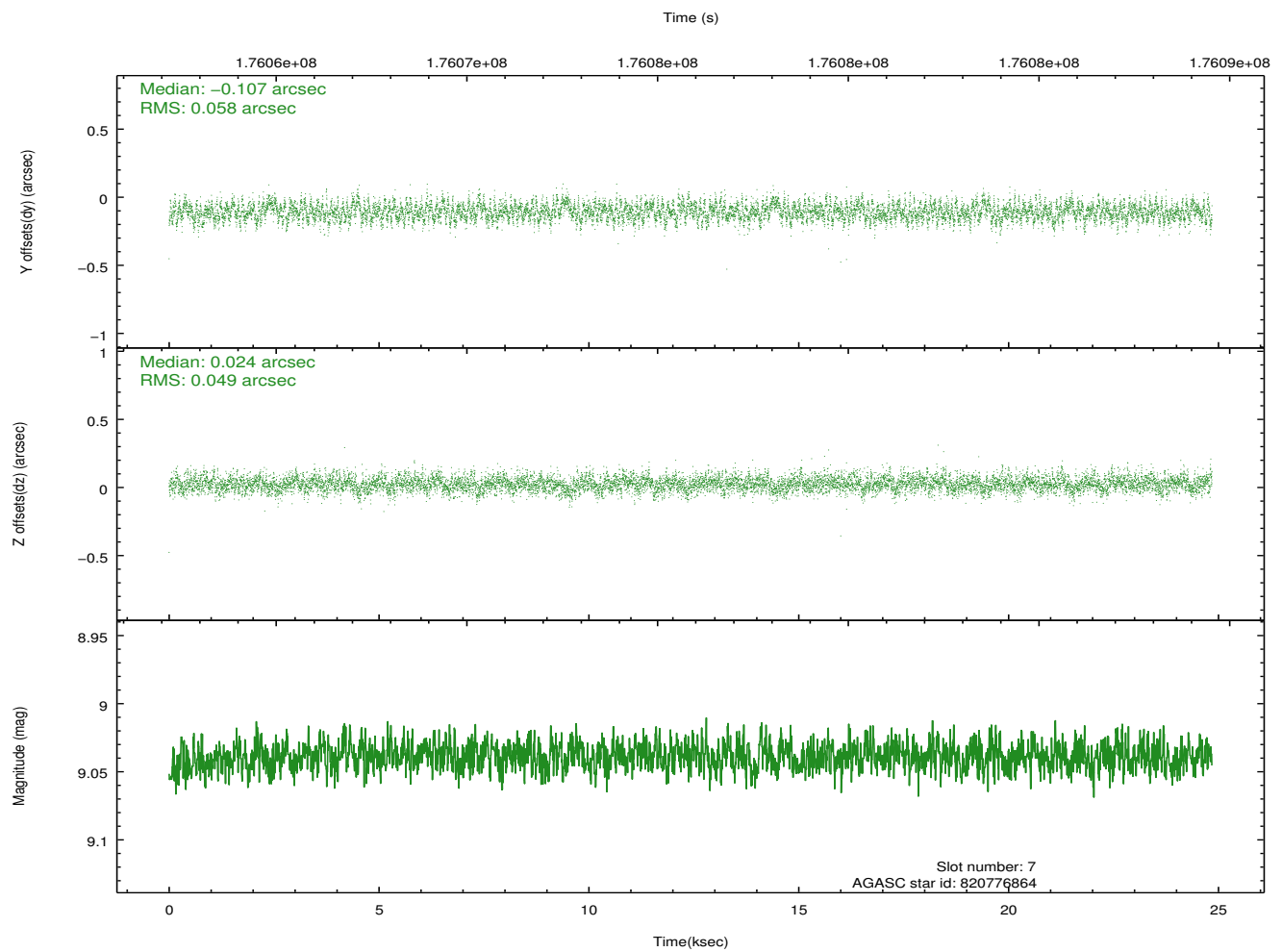
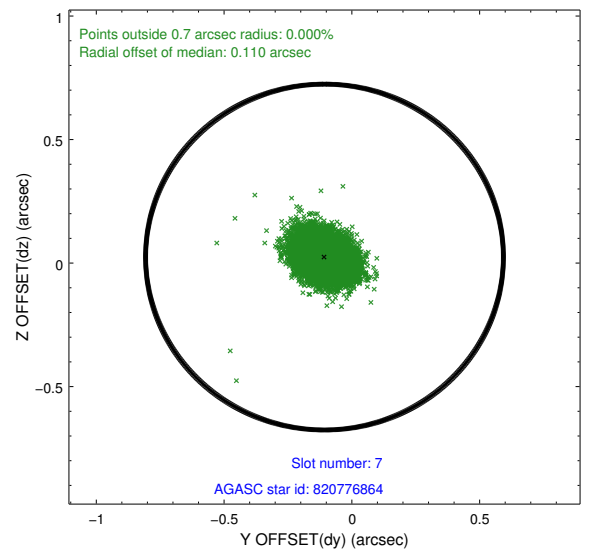
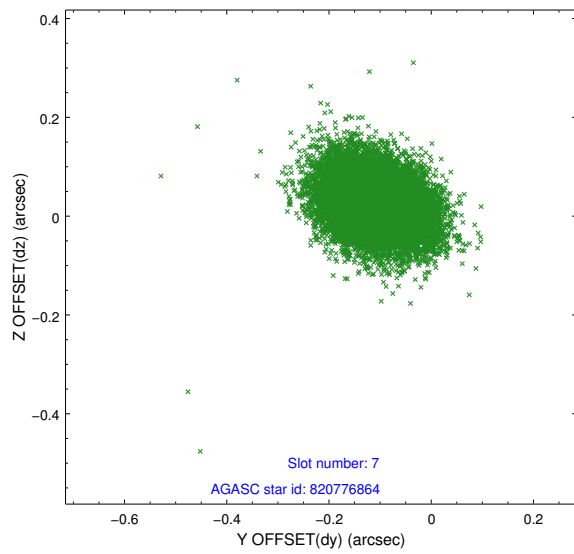
2.4.3 Slot 5



2.4.4 Slot 6

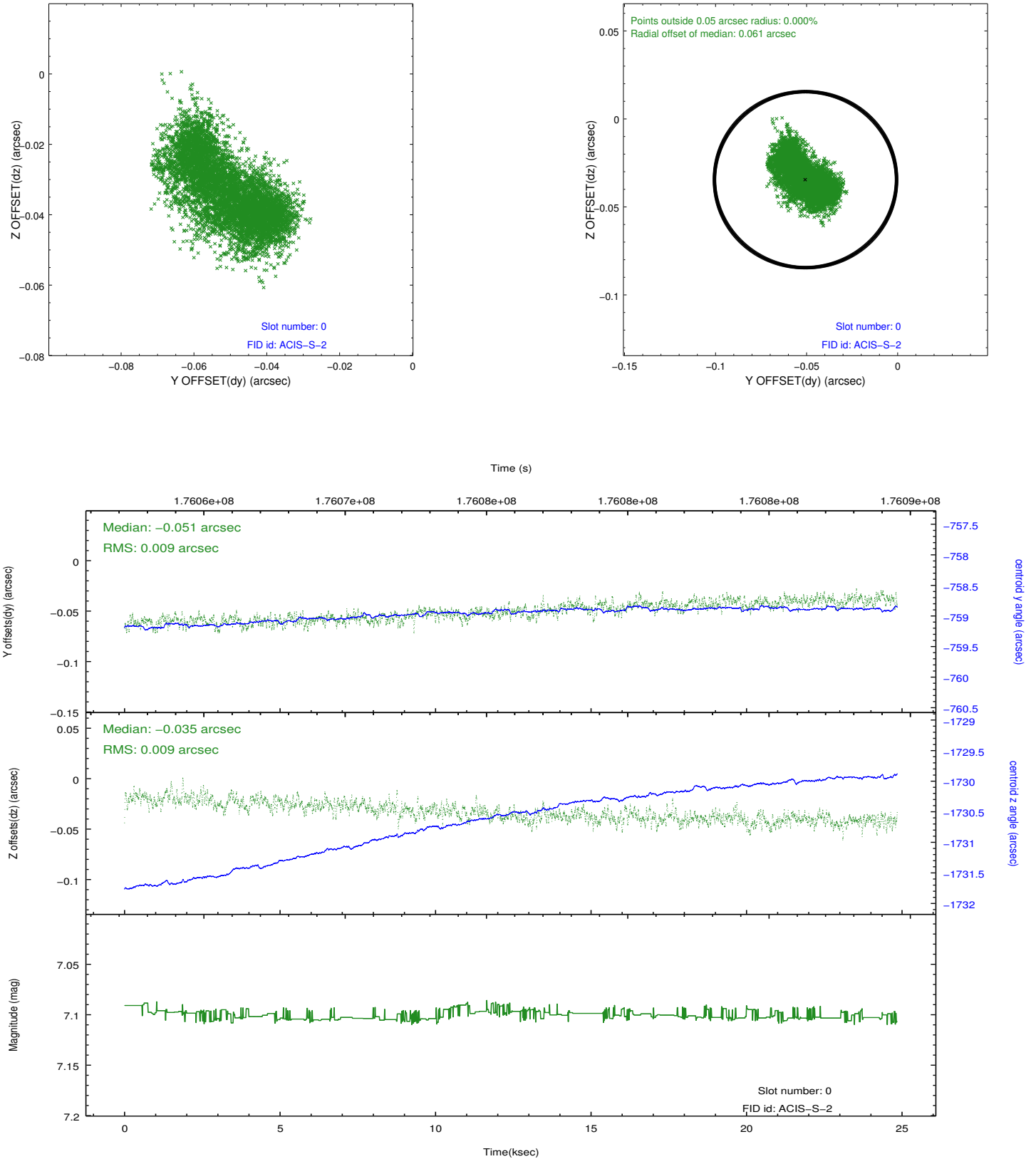


2.4.5 Slot 7

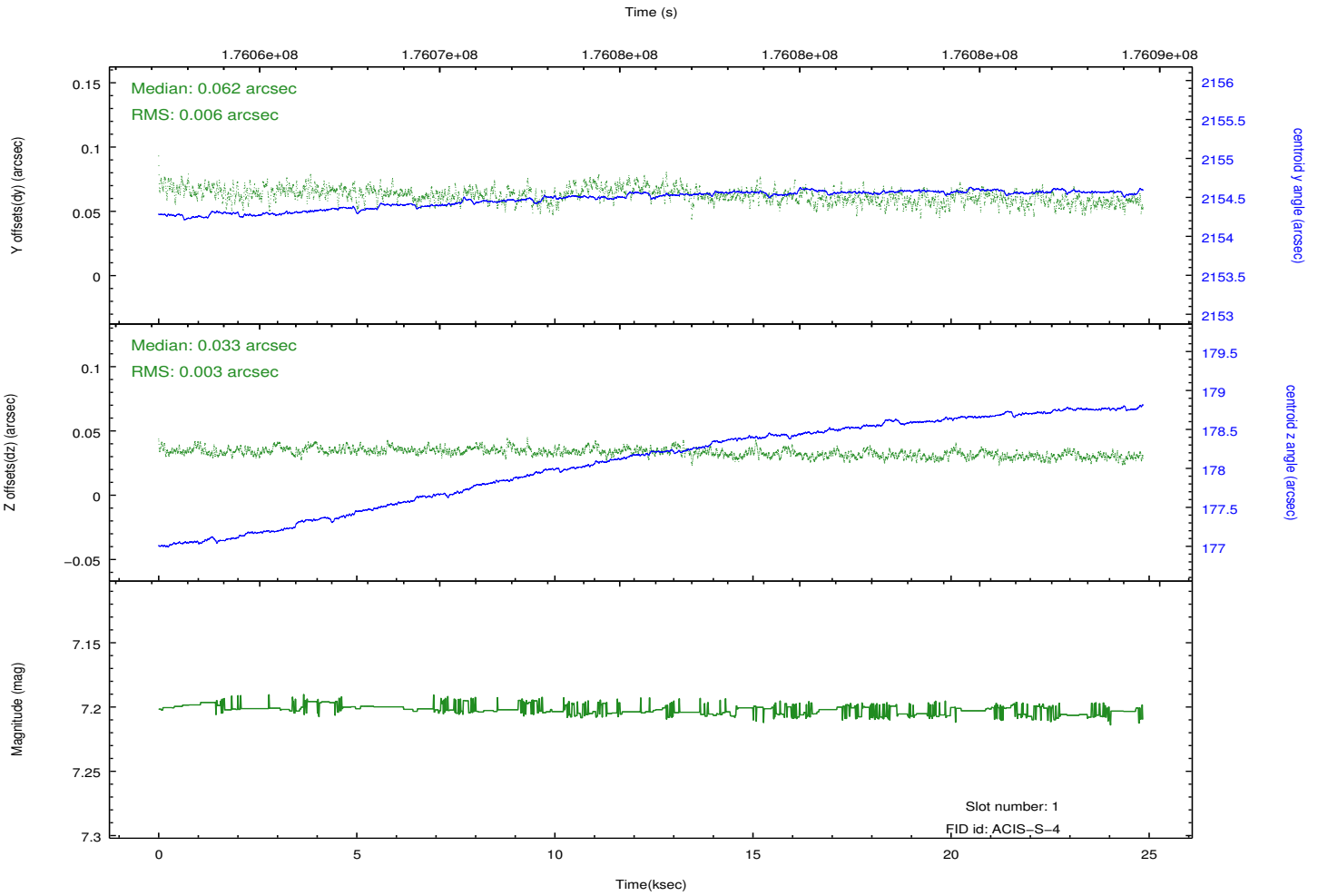
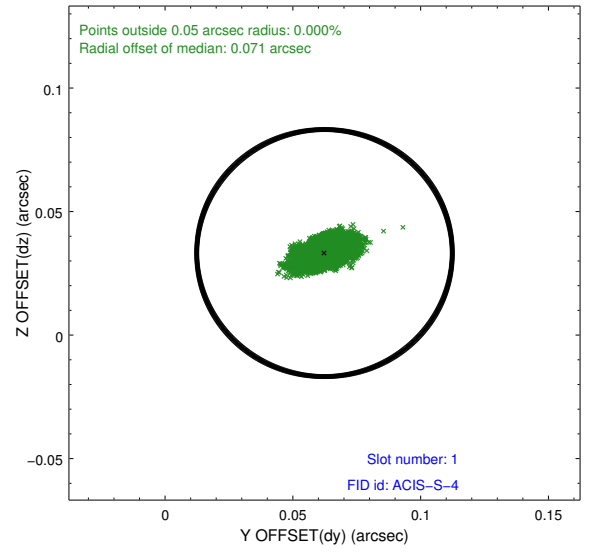
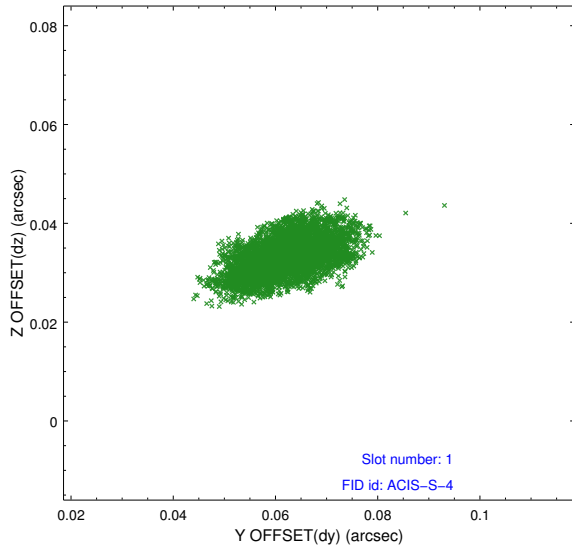


2.5 FID Slots

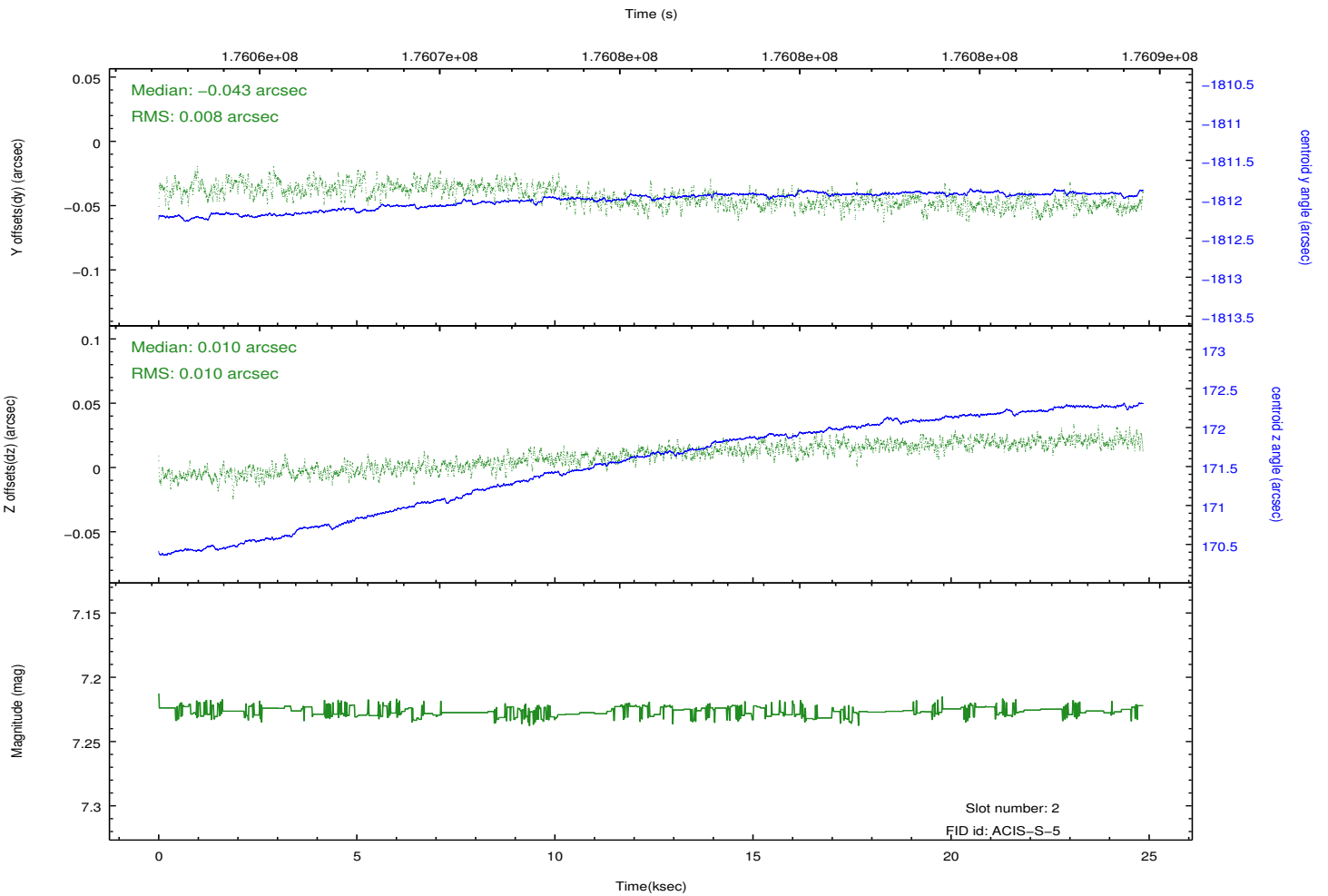
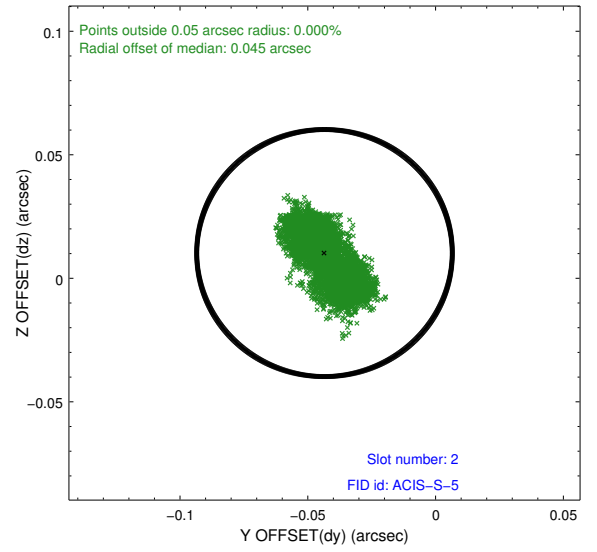
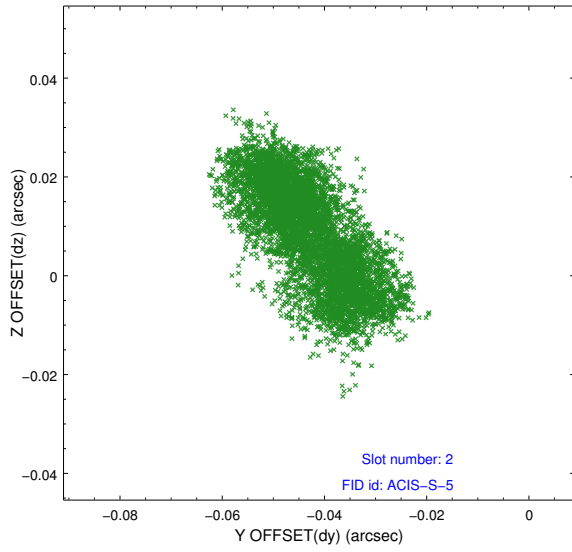
2.5.1 Slot 0



2.5.2 Slot 1



2.5.3 Slot 2



A Summary

A.1 Status

V&V Scientist	Beth Sundheim
V&V Date (YYYY-MM-DD)	2012.11.16
V&V Edition	1
V&V Disposition and Status	OK
V&V Charge Time	24.8

A.2 Comments