

V&V Reference Report

L2 ASCDS Version : 8.4.5

Observation 3852 - L2 Version 3
Chandra X-Ray Center

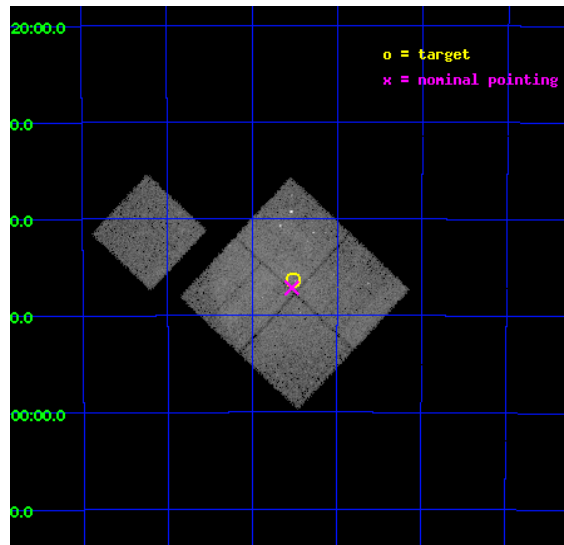
L2 Processing Date : Oct 29 2012

Contents

1	Front	2
2	OBI	3
2.1	OBI	3
2.1.1	Images	3
2.1.2	Bias	3
2.1.3	Parameters	4
2.1.4	Events	4
2.2	Compared Parameters	5
2.3	Aspect	6
2.4	Star Slots	9
2.4.1	Slot 3	9
2.4.2	Slot 4	10
2.4.3	Slot 5	11
2.4.4	Slot 6	12
2.4.5	Slot 7	13
2.5	FID Slots	14
2.5.1	Slot 0	14
2.5.2	Slot 1	15
2.5.3	Slot 2	16
A	Summary	17
A.1	Status	17
A.2	Comments	17

1 Front

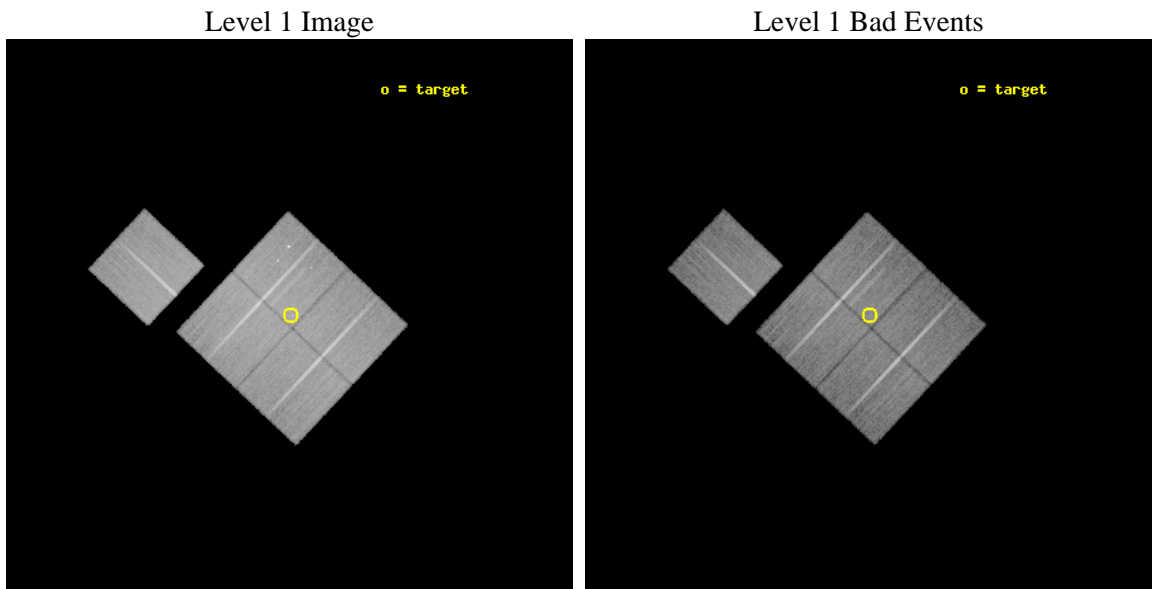
seq_num	500331	Sequence number
obs_id	3852	Observation id
title	OBSERVING THE THERMAL COMPOSITE SNR KES 27	Proposal title
observer	Frederick Seward	Principal investigator
object	KES 27	Source name
dtycycle	0	
cycle	P	events from which exps? Prim/Second/Both
ra_targ	237.13125	Observer's specified target RA [deg]
dec_targ	-53.772222	Observer's specified target Dec [deg]
ra_nom	237.13343175738	Nominal RA [deg]
dec_nom	-53.786000646488	Nominal Dec [deg]
roll_nom	313.21046188953	Nominal Roll [deg]
revision	3	Processing version of data
ontime	39236.617954046	Sum of GTIs [s]
liveltime	38723.962654898	Livetime [s]
ontime0	39239.758924365	Sum of GTIs [s]
ontime1	39233.476953864	Sum of GTIs [s]
ontime2	39233.476973832	Sum of GTIs [s]
ontime3	39236.617954046	Sum of GTIs [s]
ontime6	39233.476983696	Sum of GTIs [s]
l2events	124519	Number of level 2 events



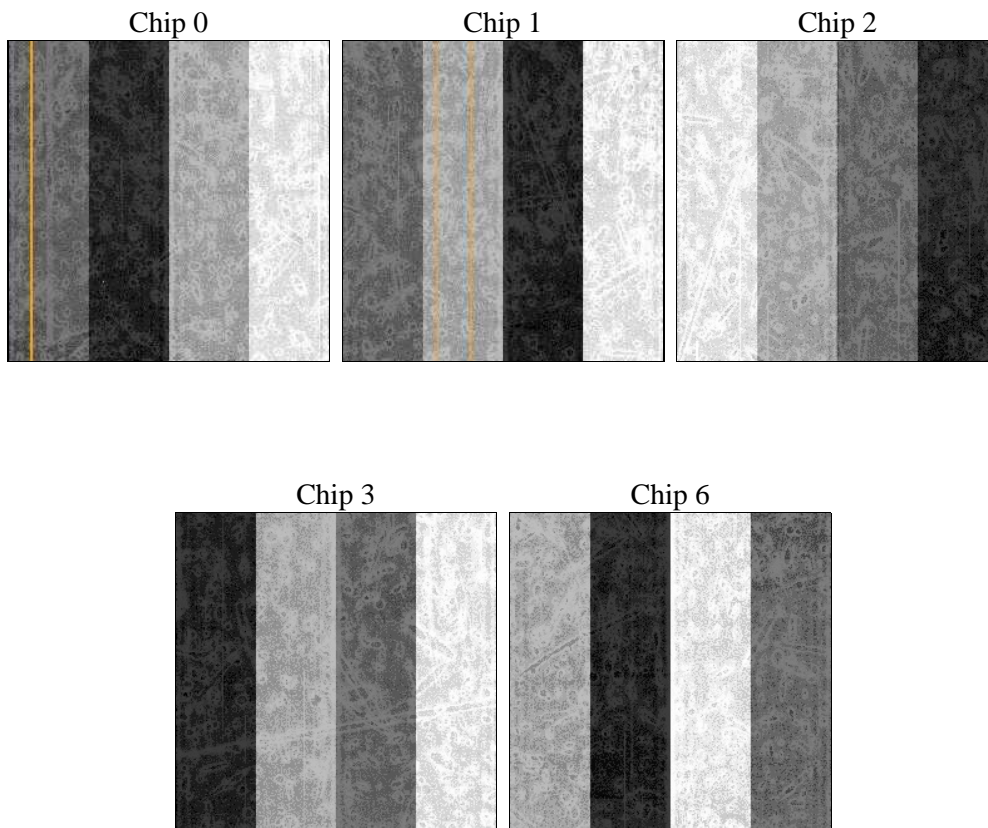
2 OBI

2.1 OBI

2.1.1 Images



2.1.2 Bias



2.1.3 Parameters

obi_num	0	Obi number	sched_exp_time	39089.000000	[s] Scheduled observation exposure time
ascdsver	8.4.5	Processing system revision	ontime	39236.617954046	Sum of GTIs [s]
caldbver	4.5.2	 	ontime0	39239.758924365	Sum of GTIs [s]
date	2012-10-29T18:14:01	Date and time of file creation	ontime1	39233.476953864	Sum of GTIs [s]
revision	3	Processing version of data	ontime2	39233.476973832	Sum of GTIs [s]
			ontime3	39236.617954046	Sum of GTIs [s]
			ontime6	39233.476983696	Sum of GTIs [s]
			l1events	1017954	Number of level 1 events

2.1.4 Events

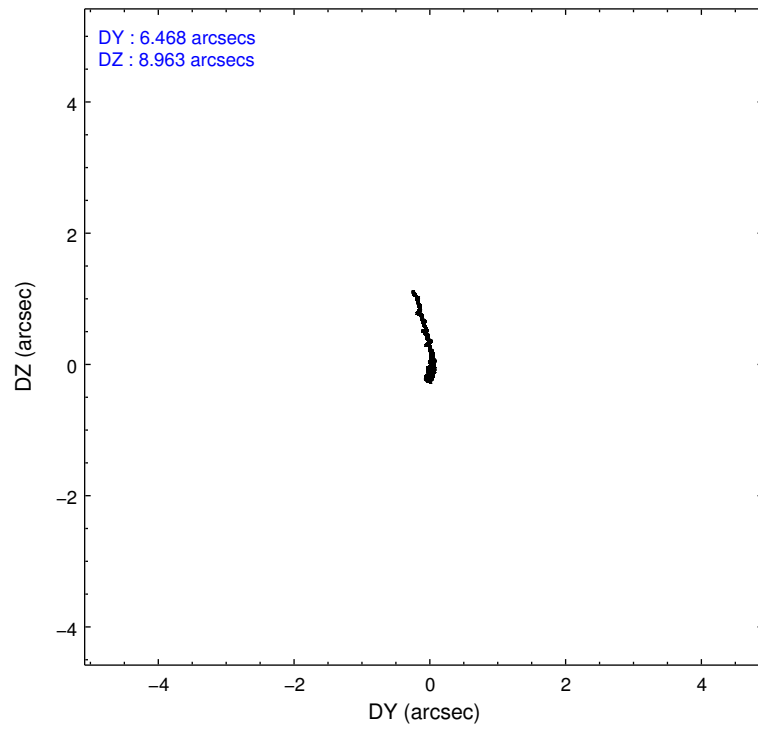
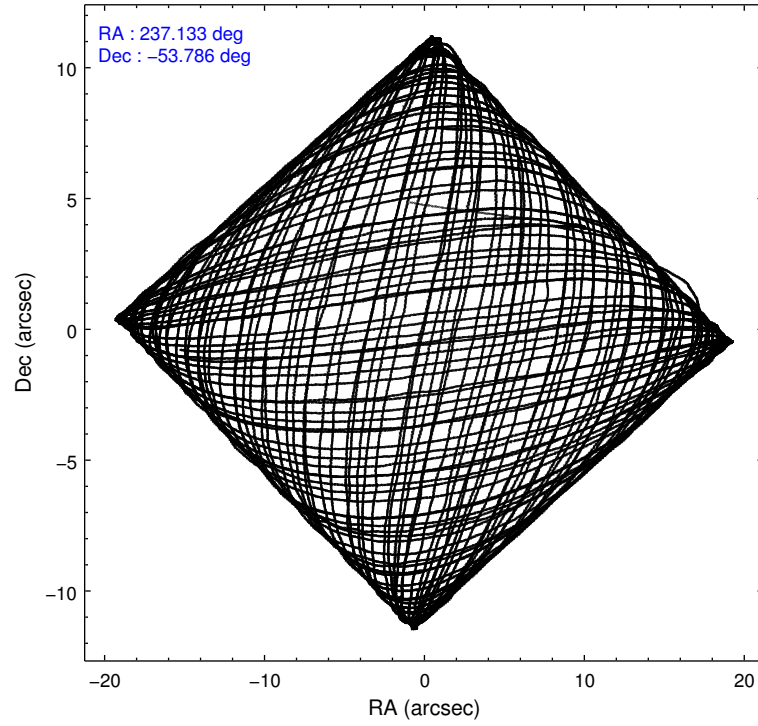
	ccd 0	ccd 1	ccd 2	ccd 3	ccd 6
level 1 events	190643	190742	220360	214385	201824
rejected events	163621	161612	184158	180957	180258
rejected %	85%	84%	83%	84%	89%

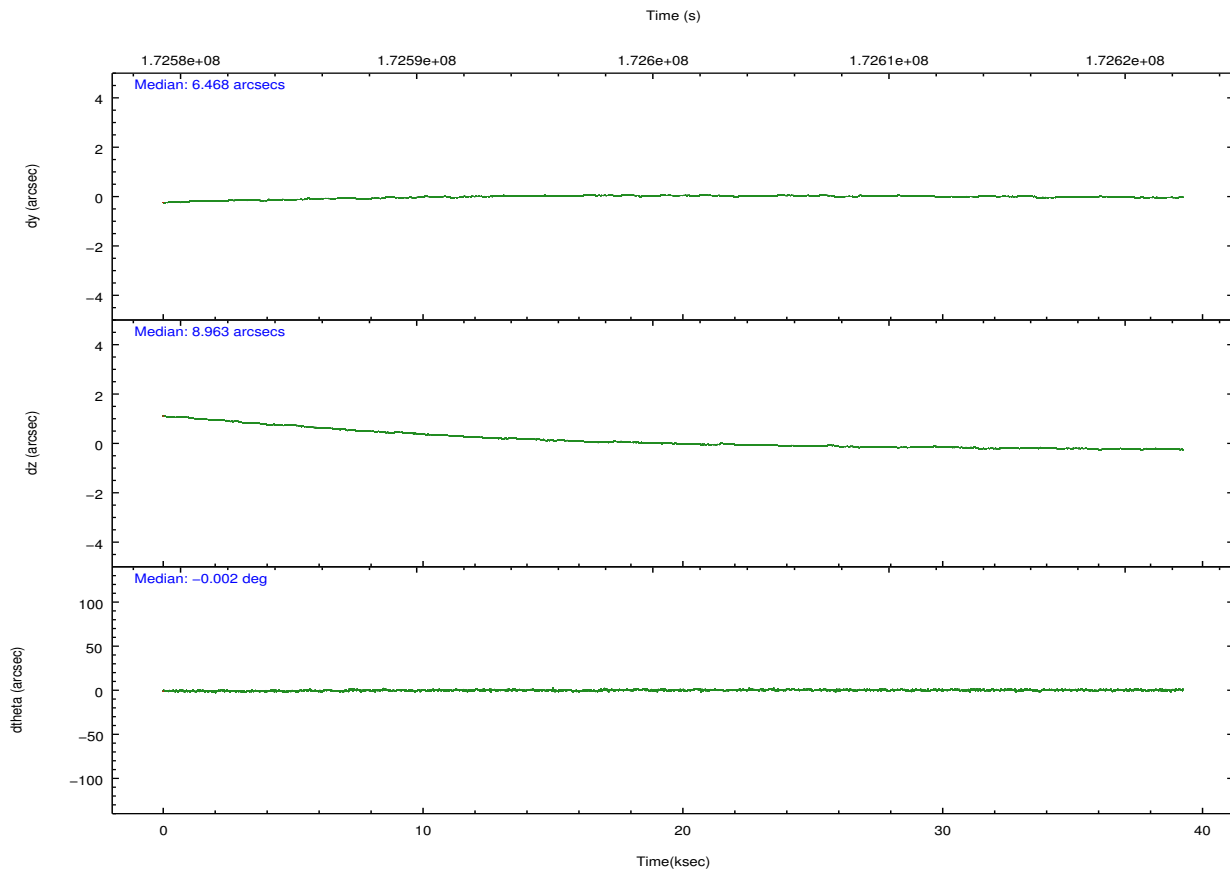
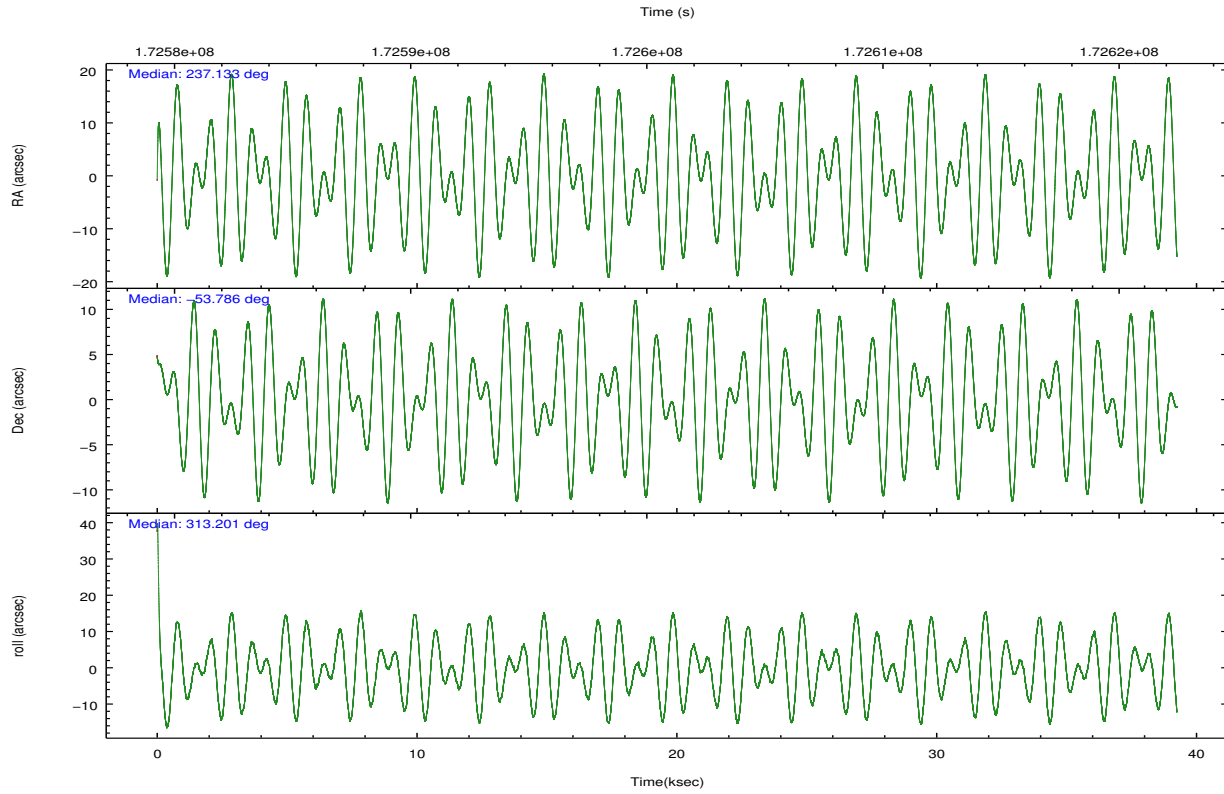
	ccd 0	ccd 1	ccd 2	ccd 3	ccd 6
grade 0 events	12942	13970	20809	19194	8415
	6%	7%	9%	8%	4%
grade 1 events	109	100	179	146	82
	0%	0%	0%	0%	0%
grade 2 events	5579	5628	6422	5351	4702
	2%	2%	2%	2%	2%
grade 3 events	2545	2633	2544	2638	2316
	1%	1%	1%	1%	1%
grade 4 events	2312	2659	2761	2545	2158
	1%	1%	1%	1%	1%
grade 5 events	6670	7110	6397	7441	7494
	3%	3%	2%	3%	3%
grade 6 events	3864	4475	3897	3918	4157
	2%	2%	1%	1%	2%
grade 7 events	156622	154167	177351	173152	172500
	82%	80%	80%	80%	85%

2.2 Compared Parameters

Parameter	Planned	Actual	Parameter	Planned	Actual
Instrument	ACIS	ACIS	Obspar format version number	7	7
Detector	ACIS-01236	ACIS-01236	Obspar file type	PREDICTED	ACTUAL
Grating	NONE	NONE	Obspar update status	NONE	UPDATED
Data mode	VFAINT	VFAINT	Number of optional ACIS chips dropped	0	0
Observation mode	POINTING	POINTING	On-chip summing requested	N	N
[deg] Pointing RA	237.088988	237.1334317573767	Subarray requested	NONE	NONE
[deg] Pointing Dec	-53.778172	-53.78600064648847	Alternating exposures requested	N	N
[deg] Pointing Roll	312.965908	313.2104618895341	[s] Primary exposure time	0.000000	3.1
[mm] SIM focus pos	-0.782348	-0.7809083437167272			
[mm] SIM defocus	0	0.001439871863259334			
[mm] SIM translation stage pos	-233.592463	-233.5874344608287			
[mm] SIM translation stage offset	0	-0.005018542100998502			
[s] Observation start time (MET)	172581389.184000	172580188.66681			
Observation start date	2003-06-21T11:15:25	2003-06-21T10:56:28			
[s] Observation end time (MET)	172620478.184000	172621436.71857			
Observation end date	2003-06-21T22:06:54	2003-06-21T22:23:56			
Read mode	TIMED	TIMED			

2.3 Aspect



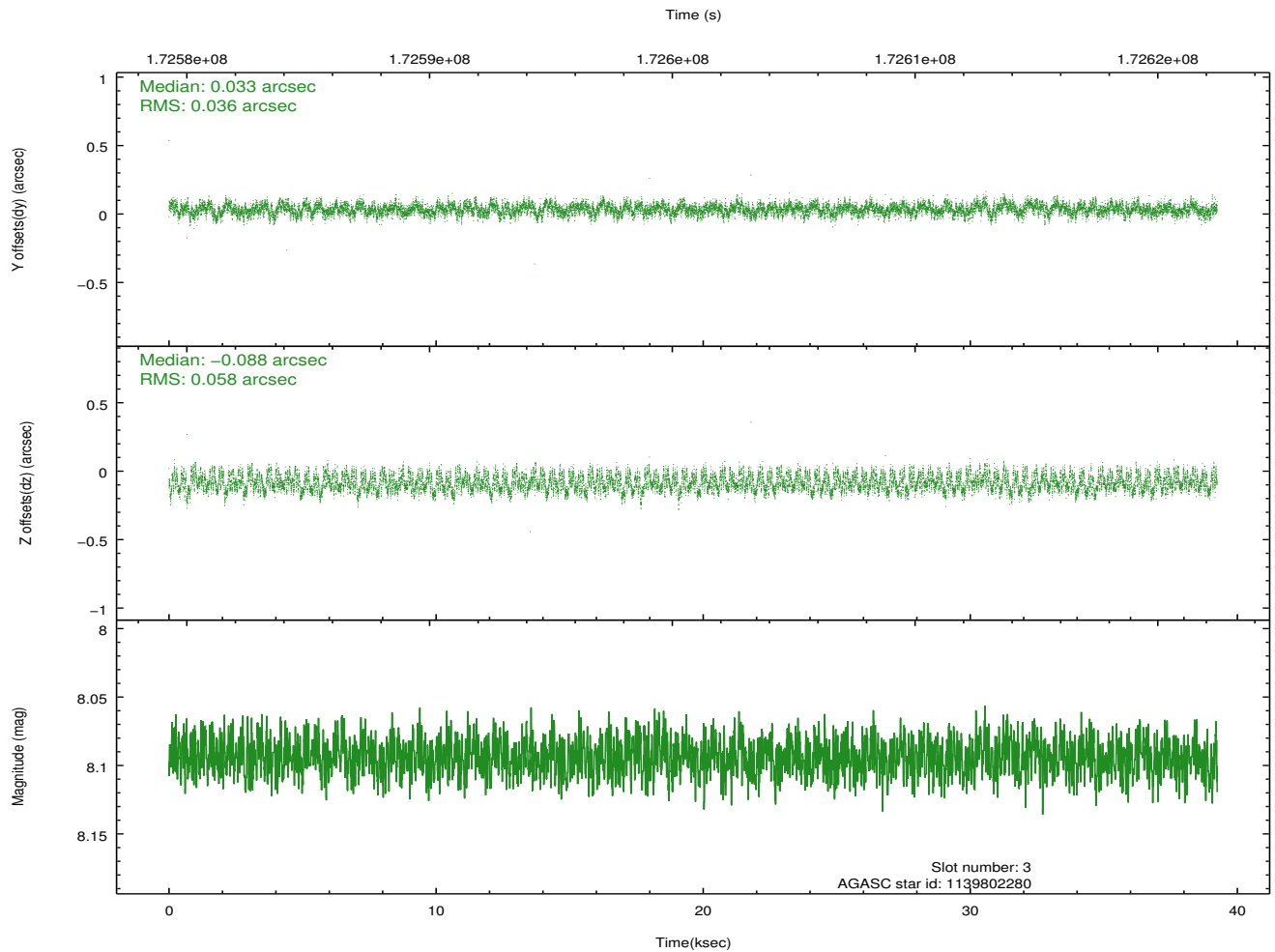
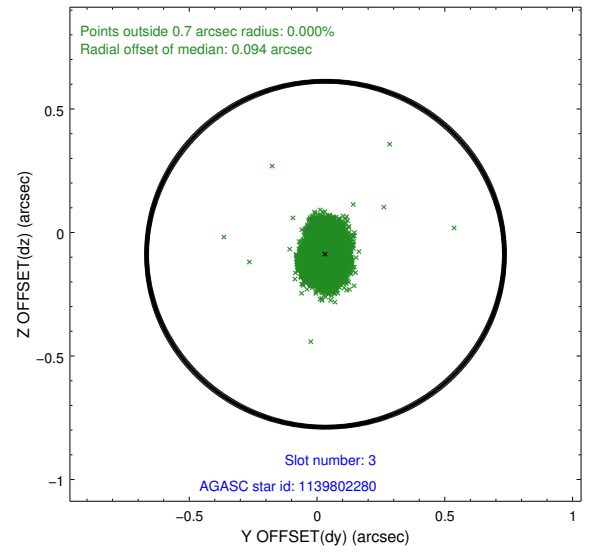
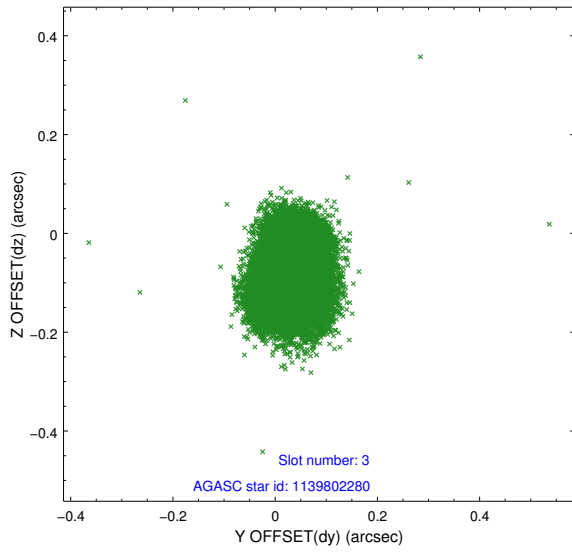


Slot Statistics

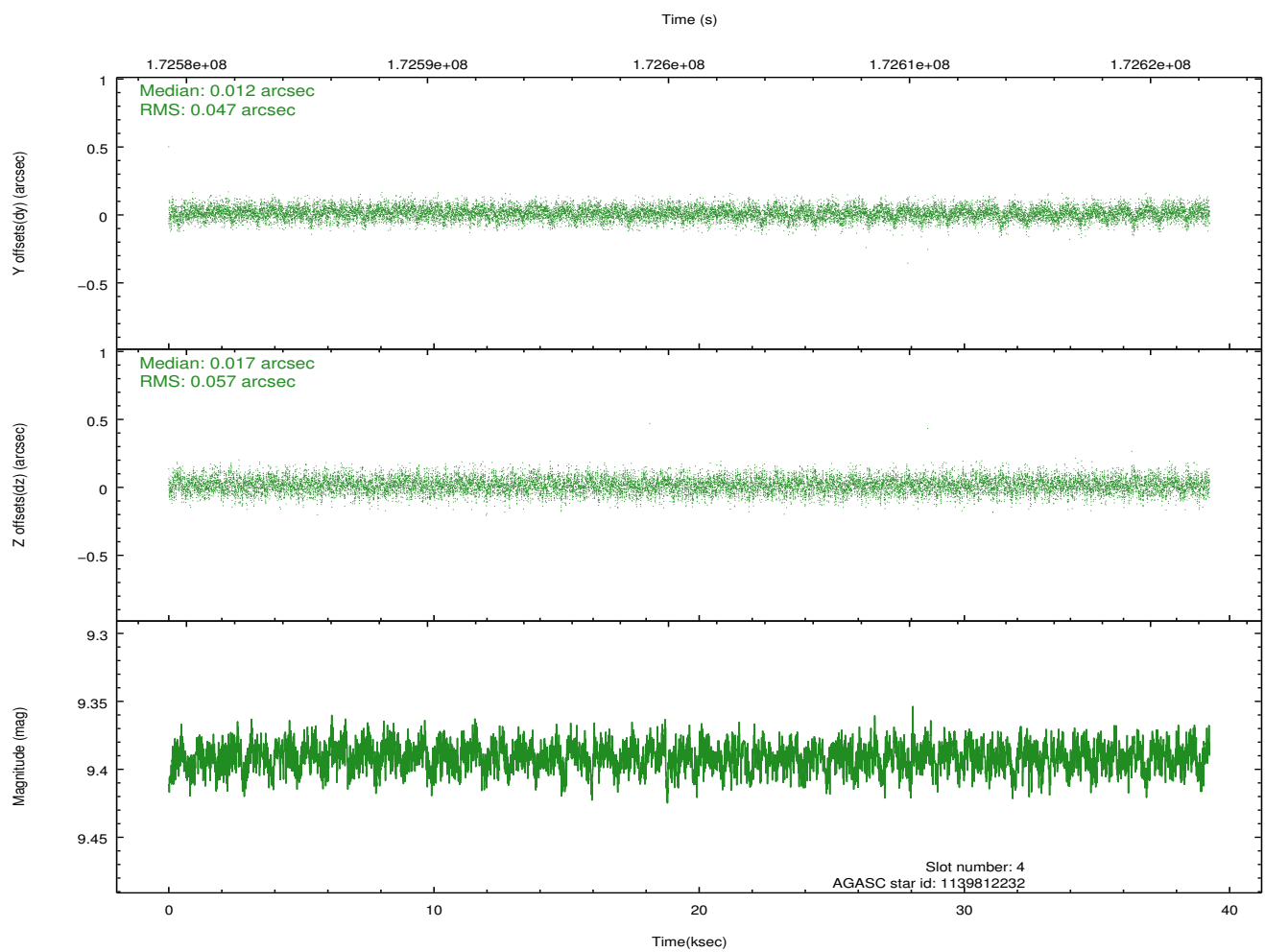
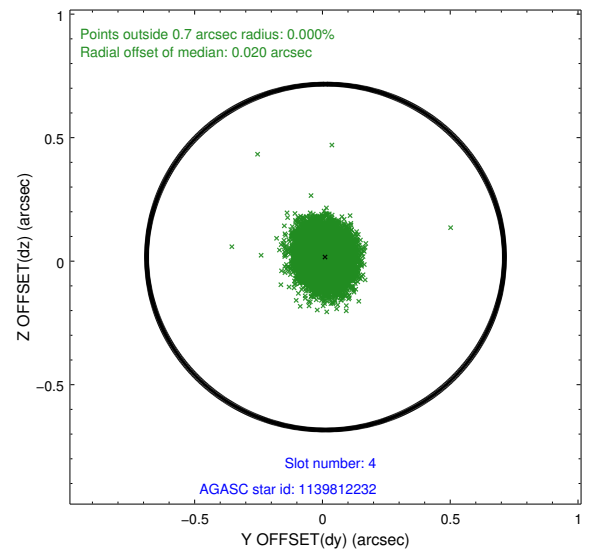
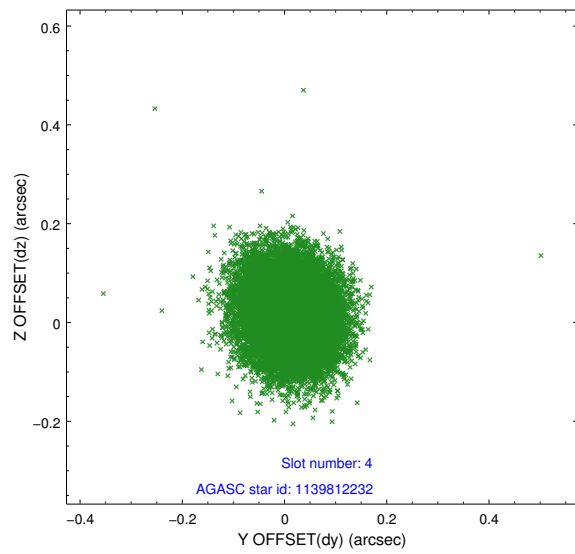
slot	status	id	mag	n_pts	med_dy	med_dz	dr1	dr2	ra	dec	mean_y	mean_z
0	FID	ACIS-I-2	7.14	9570	-0.056	-0.054	0.012	0.021	0.000000	0.000000	-760.97	-838.98
1	FID	ACIS-I-4	7.19	9569	0.099	0.053	0.011	0.023	0.000000	0.000000	2153.23	1067.30
2	FID	ACIS-I-5	7.23	9570	-0.144	0.070	0.014	0.024	0.000000	0.000000	-1814.86	1065.18
3	GUIDE	1139802280	8.09	19137	0.033	-0.088	0.074	0.115	236.525595	-54.011505	-193.65	-1447.89
4	GUIDE	1139812232	9.39	19132	0.012	0.017	0.078	0.128	236.386470	-53.805220	-940.83	-1164.33
5	GUIDE	1139945360	8.80	19132	0.013	0.094	0.073	0.118	237.358594	-53.295227	-876.15	1608.77
6	GUIDE	1140458608	8.44	19141	-0.039	0.028	0.069	0.115	237.337107	-54.507511	2275.87	-1410.05
7	GUIDE	1139942048	8.80	19137	-0.018	-0.050	0.083	0.128	237.828954	-53.329495	-91.67	2259.41

2.4 Star Slots

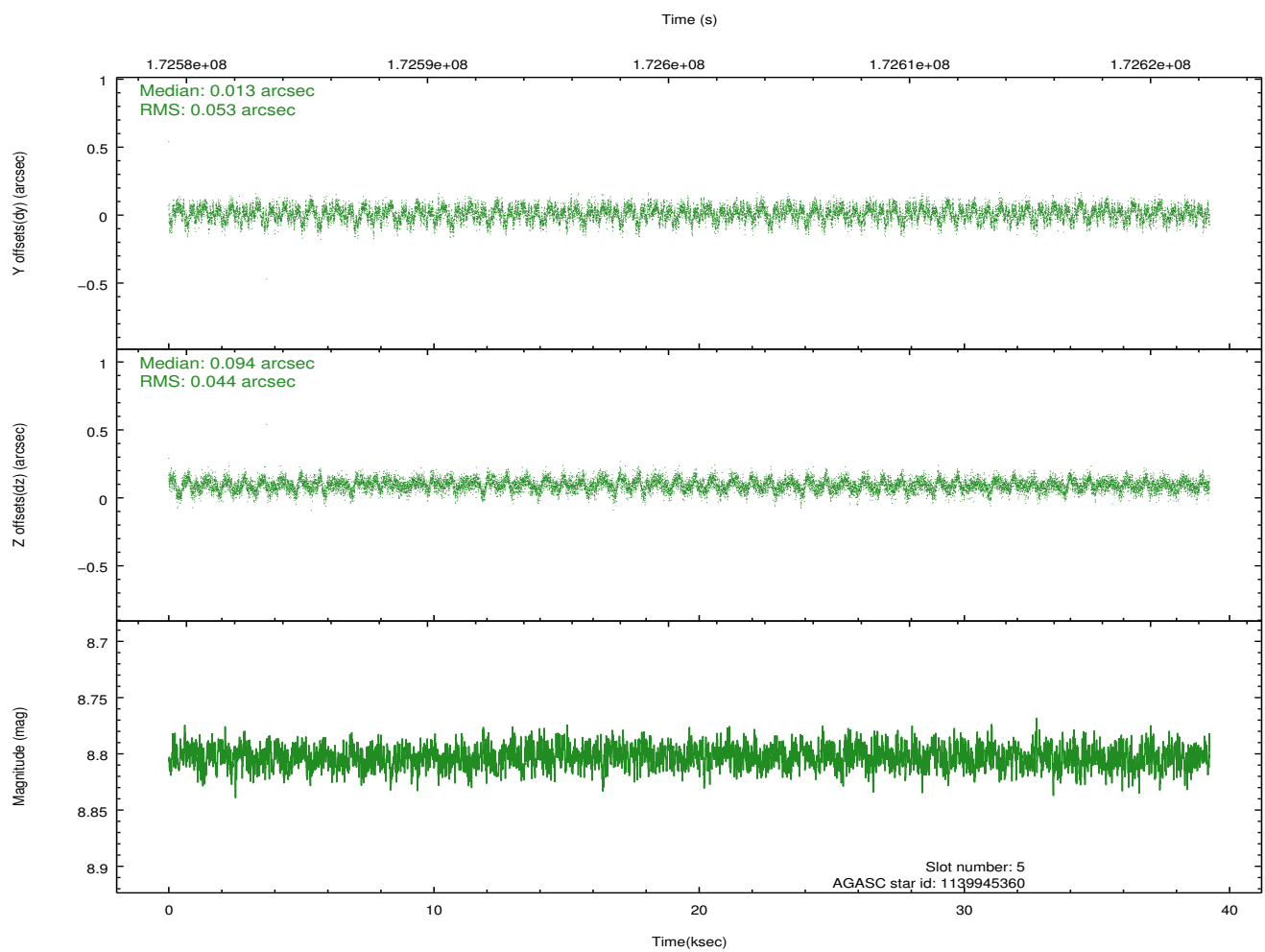
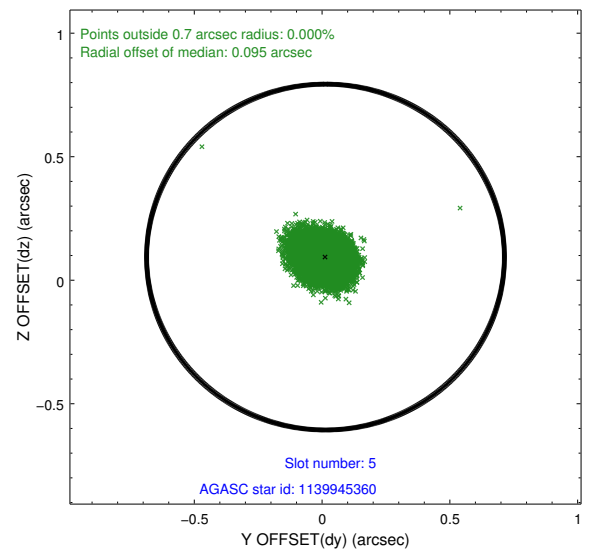
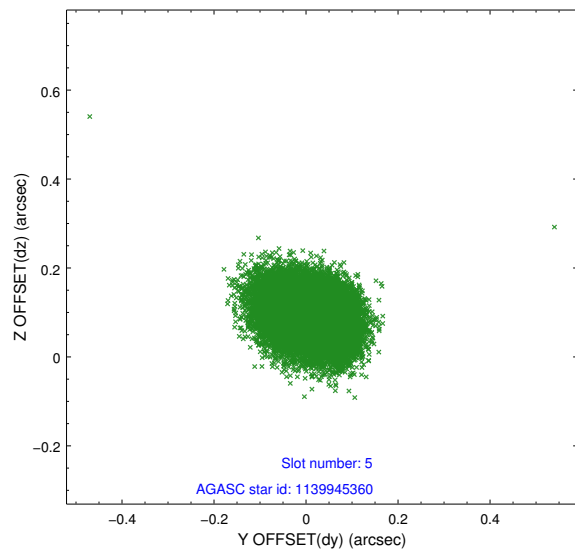
2.4.1 Slot 3



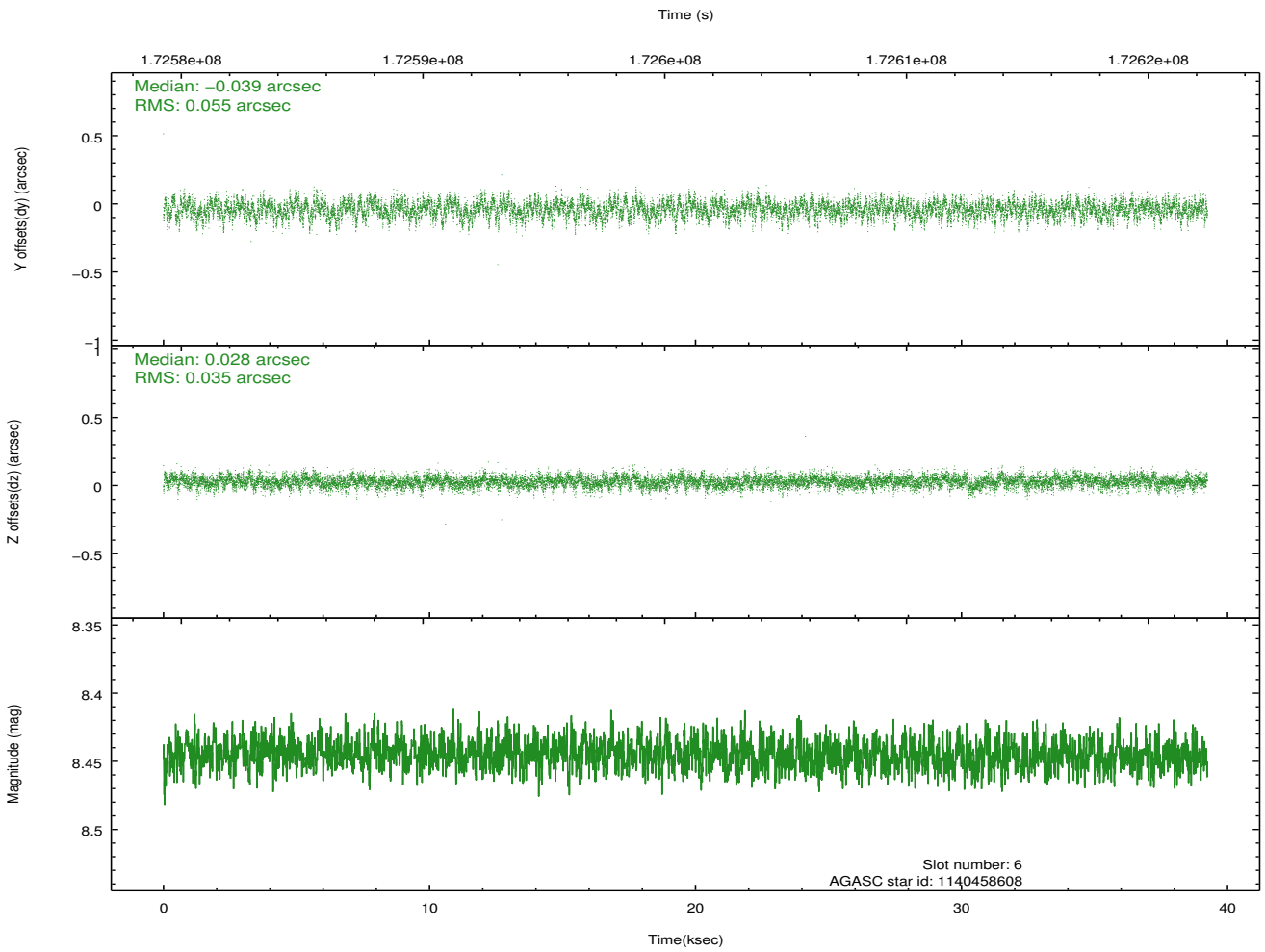
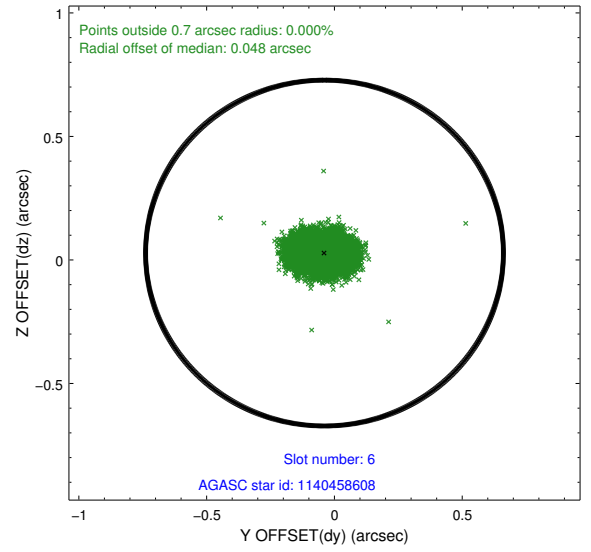
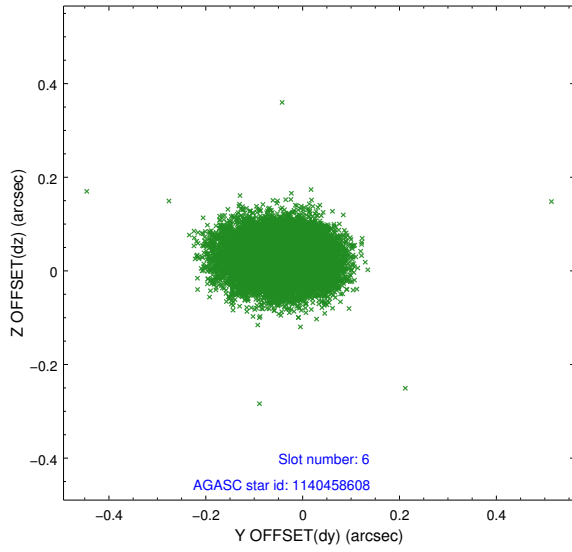
2.4.2 Slot 4



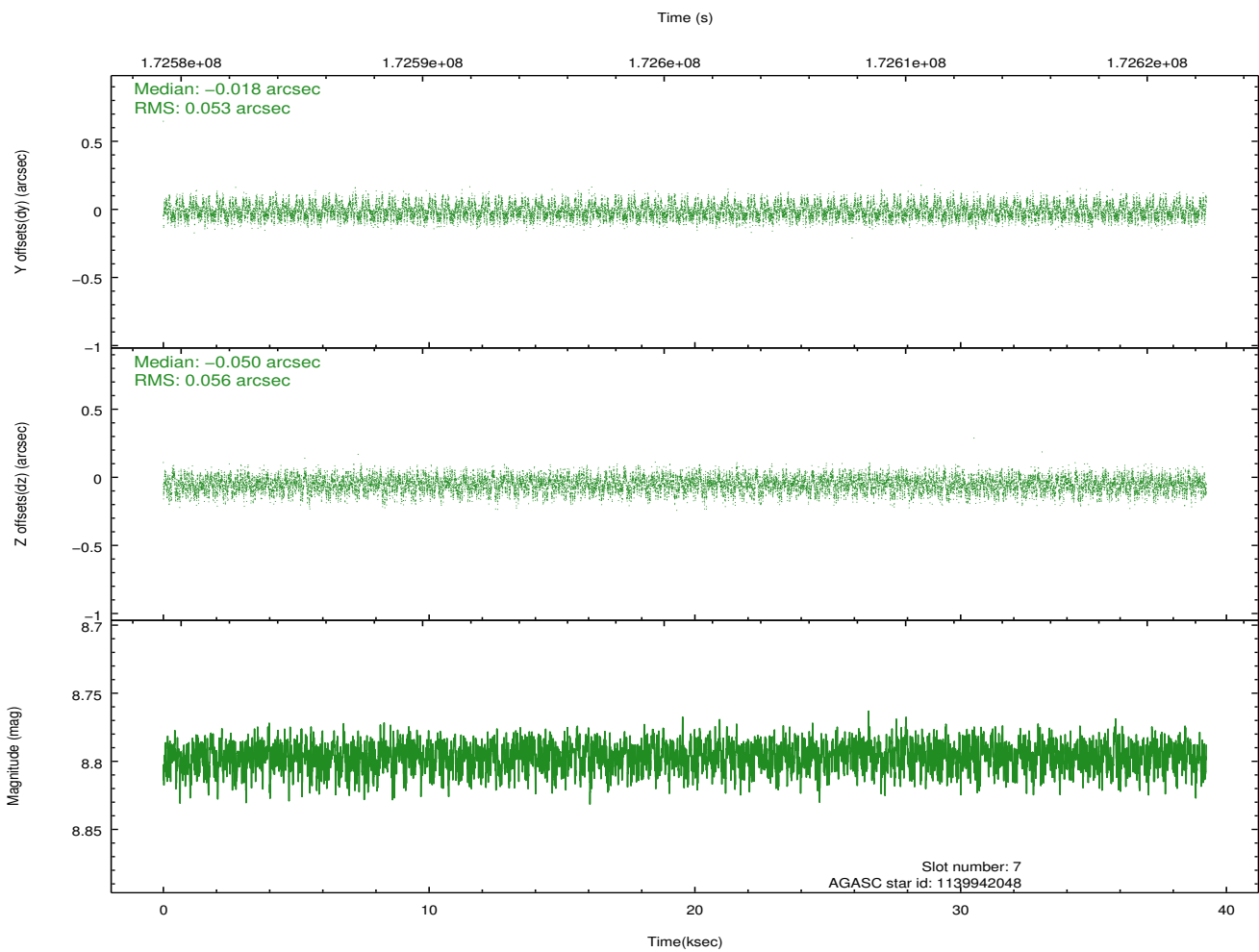
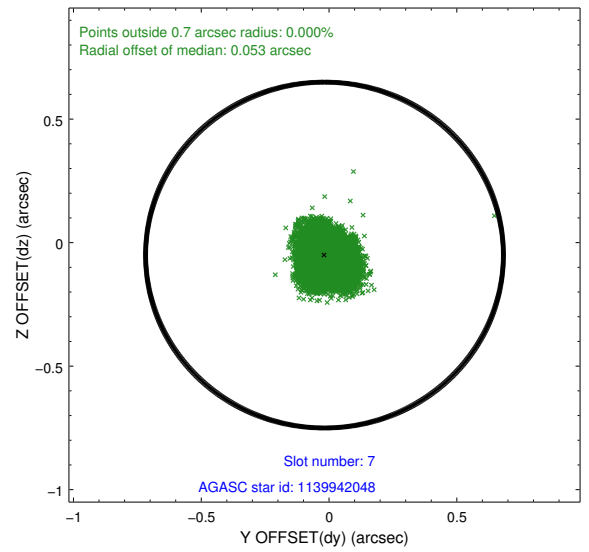
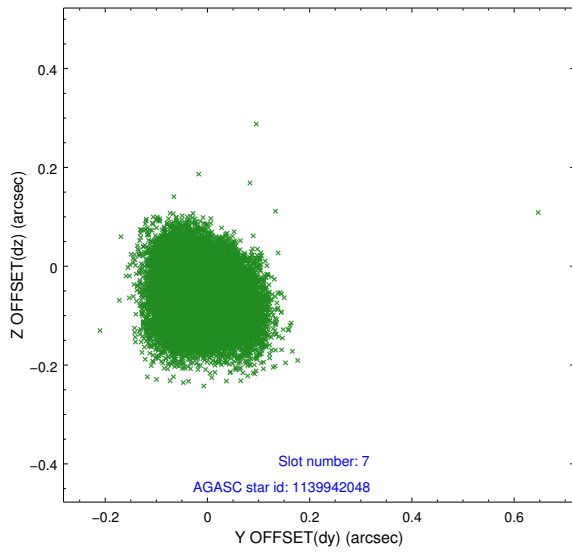
2.4.3 Slot 5



2.4.4 Slot 6

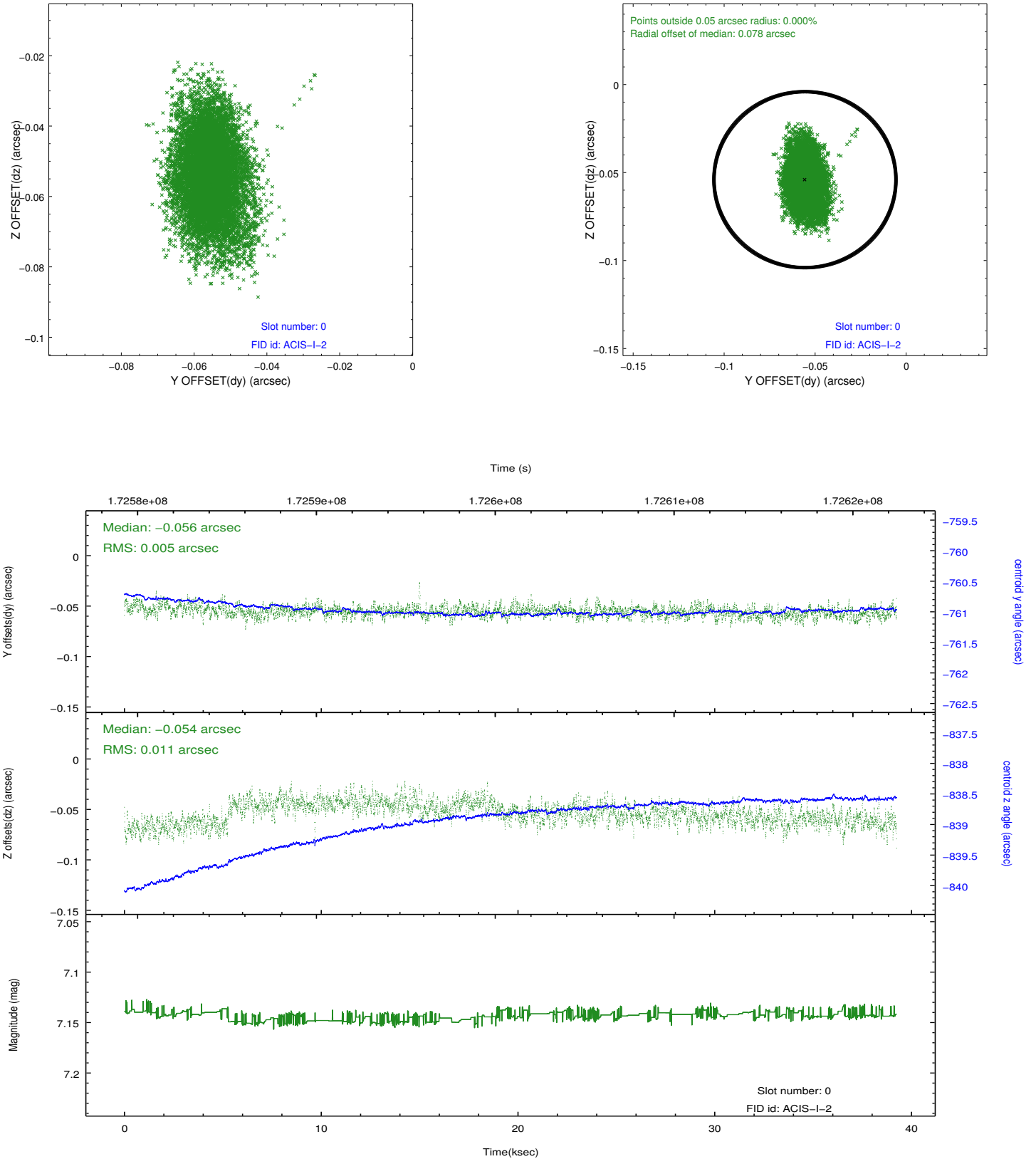


2.4.5 Slot 7

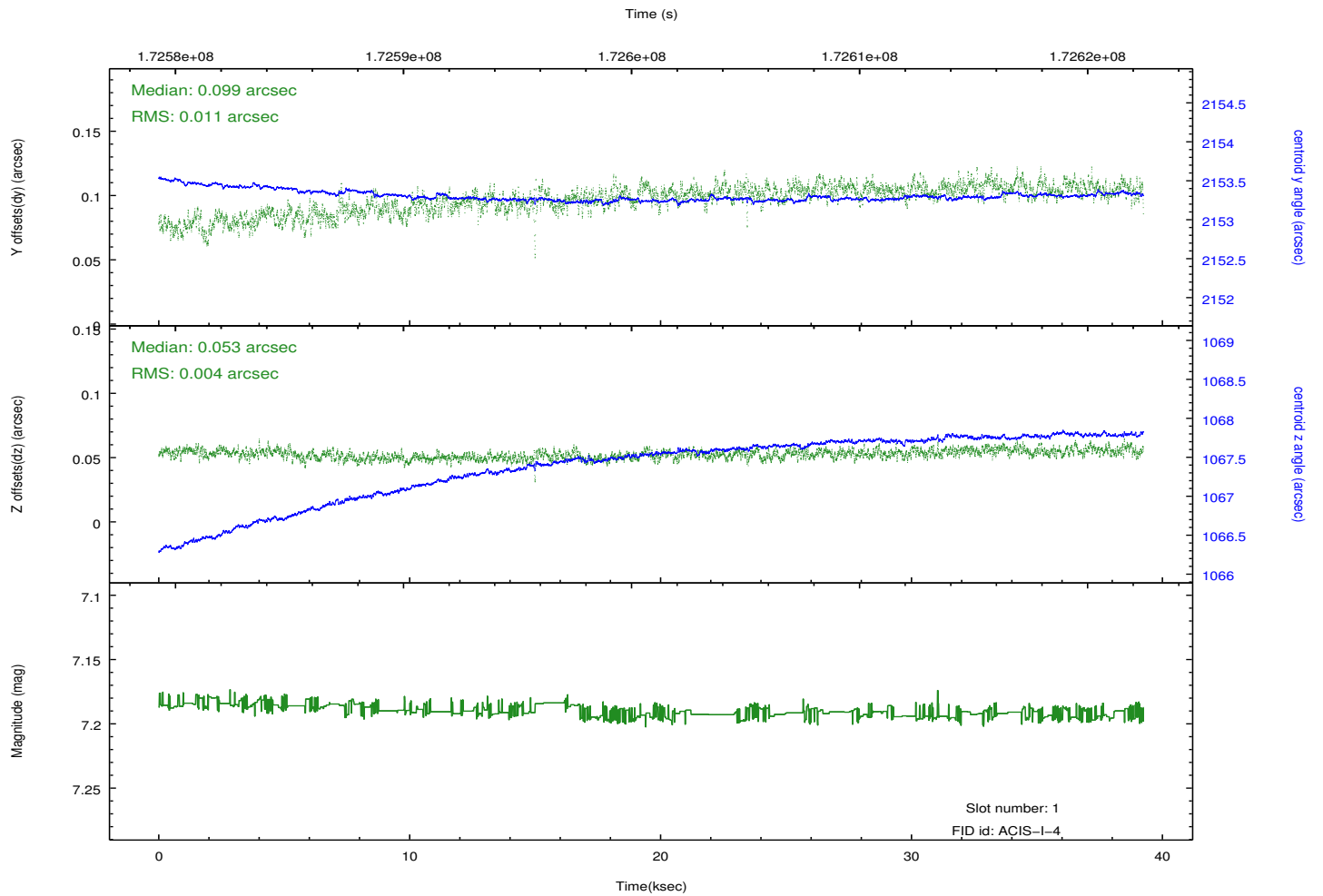
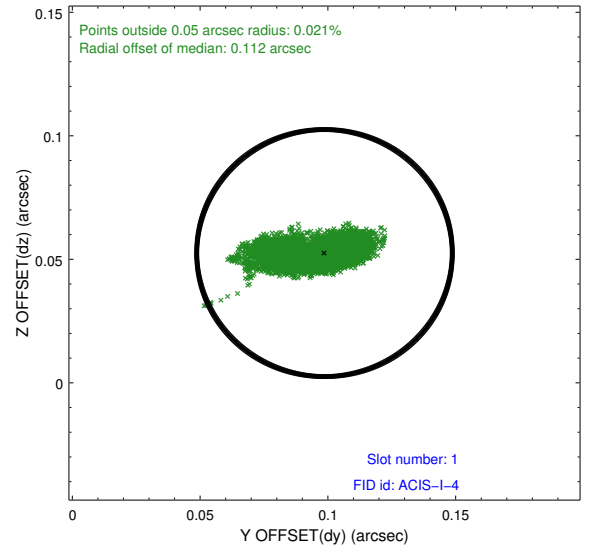
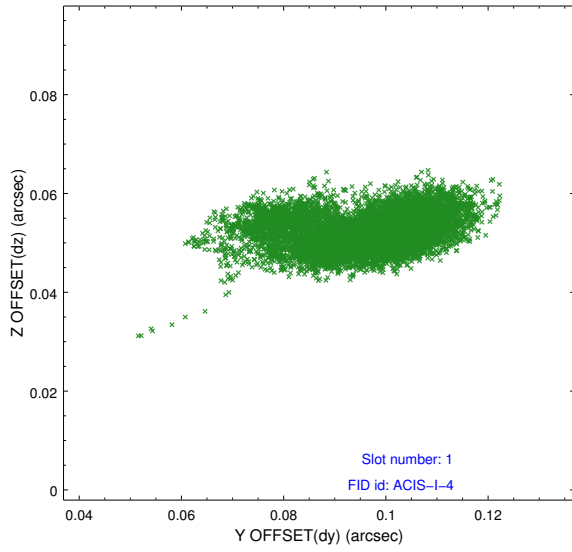


2.5 FID Slots

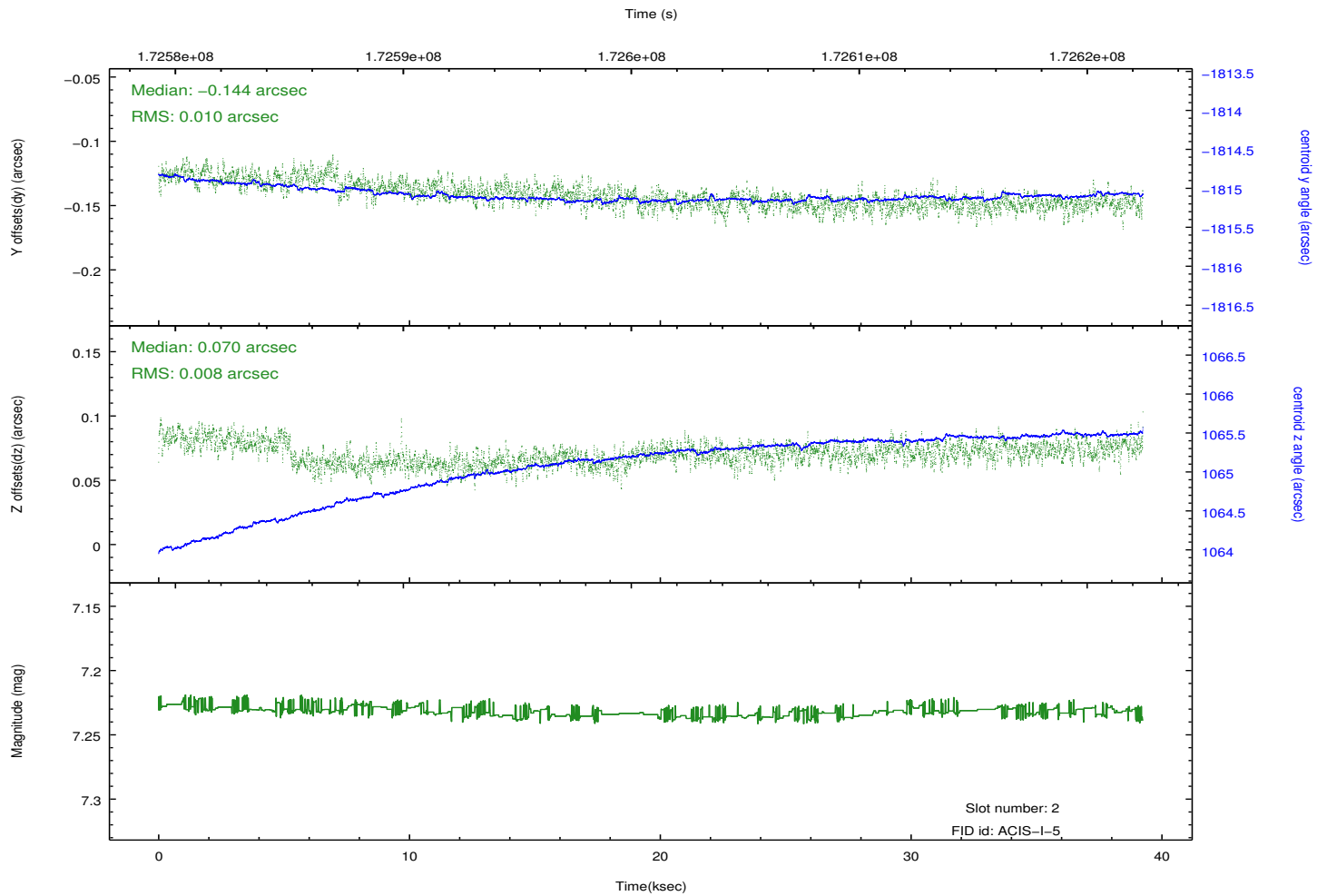
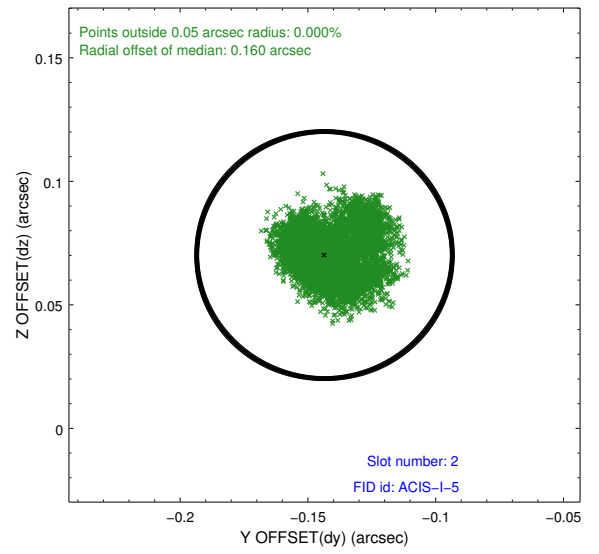
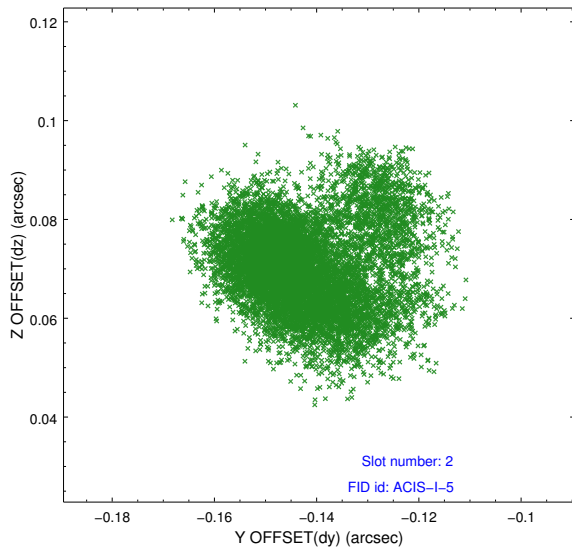
2.5.1 Slot 0



2.5.2 Slot 1



2.5.3 Slot 2



A Summary

A.1 Status

V&V Scientist	Jen Lauer
V&V Date (YYYY-MM-DD)	2012.11.15
V&V Edition	1
V&V Disposition and Status	OK
V&V Charge Time	39.236

A.2 Comments