

V&V Reference Report

L2 ASCDS Version : 8.4.5

Observation 4062 - L2 Version 3
Chandra X-Ray Center

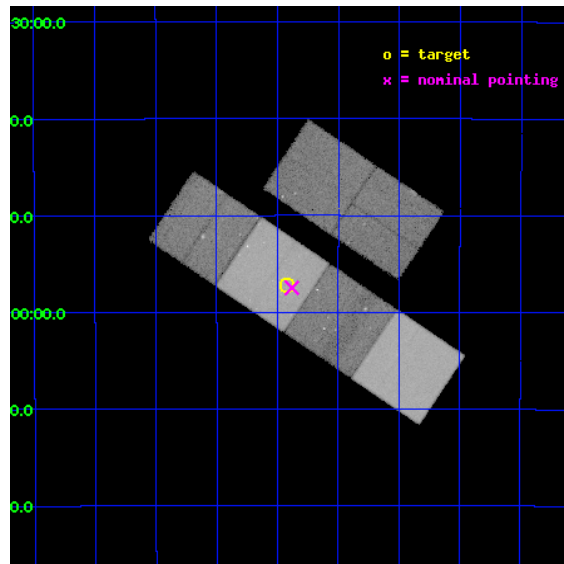
L2 Processing Date : Oct 27 2012

Contents

1	Front	2
2	OBI	3
2.1	OBI	3
2.1.1	Images	3
2.1.2	Bias	3
2.1.3	Parameters	4
2.1.4	Events	4
2.2	Compared Parameters	5
2.3	Aspect	6
2.4	Star Slots	9
2.4.1	Slot 3	9
2.4.2	Slot 4	10
2.4.3	Slot 5	11
2.4.4	Slot 6	12
2.4.5	Slot 7	13
2.5	FID Slots	14
2.5.1	Slot 0	14
2.5.2	Slot 1	15
2.5.3	Slot 2	16
A	Summary	17
A.1	Status	17
A.2	Comments	17

1 Front

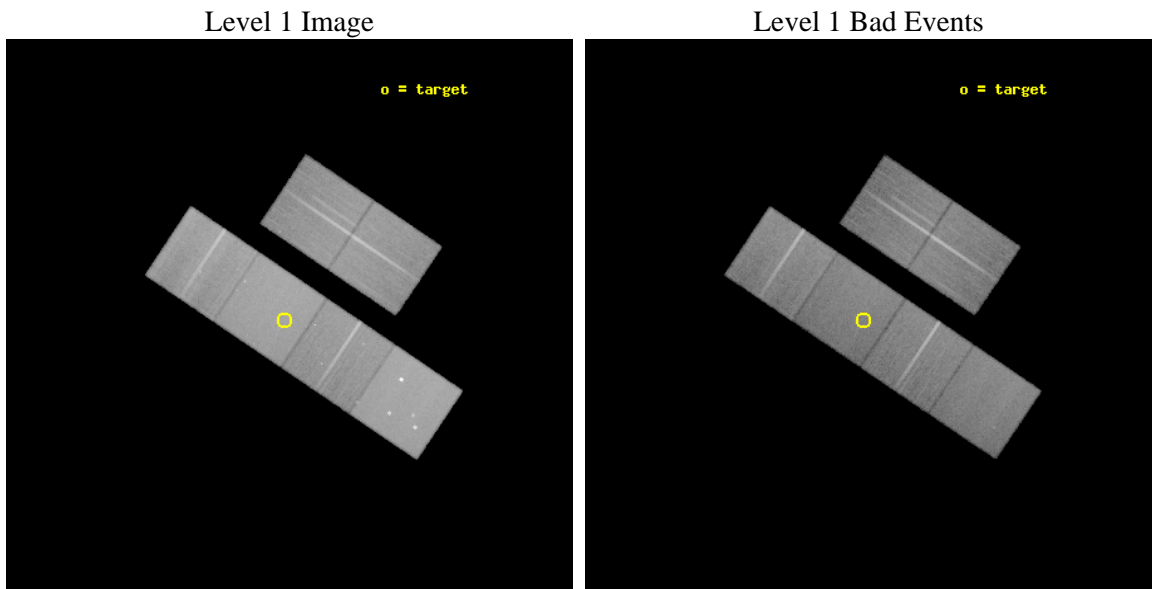
seq_num	700741	Sequence number
obs_id	4062	Observation id
title	EFFECTS OF INTERGALACTIC GAS ON STARBURST WINDS	Proposal title
observer	Dr Jesper Rasmussen	Principal investigator
object	NGC 1800	Source name
dtycycle	0	
cycle	P	events from which exps? Prim/Second/Both
ra_targ	76.605833	Observer's specified target RA [deg]
dec_targ	-31.954167	Observer's specified target Dec [deg]
ra_nom	76.595412907526	Nominal RA [deg]
dec_nom	-31.958063539056	Nominal Dec [deg]
roll_nom	213.88598511312	Nominal Roll [deg]
revision	3	Processing version of data
ontime	46742.399825871	Sum of GTIs [s]
livetime	46150.519414382	Livetime [s]
ontime2	46739.158835679	Sum of GTIs [s]
ontime3	46742.399825871	Sum of GTIs [s]
ontime5	46742.399825871	Sum of GTIs [s]
ontime6	46732.676915169	Sum of GTIs [s]
ontime7	46742.399825871	Sum of GTIs [s]
ontime8	46742.399825871	Sum of GTIs [s]
l2events	541317	Number of level 2 events



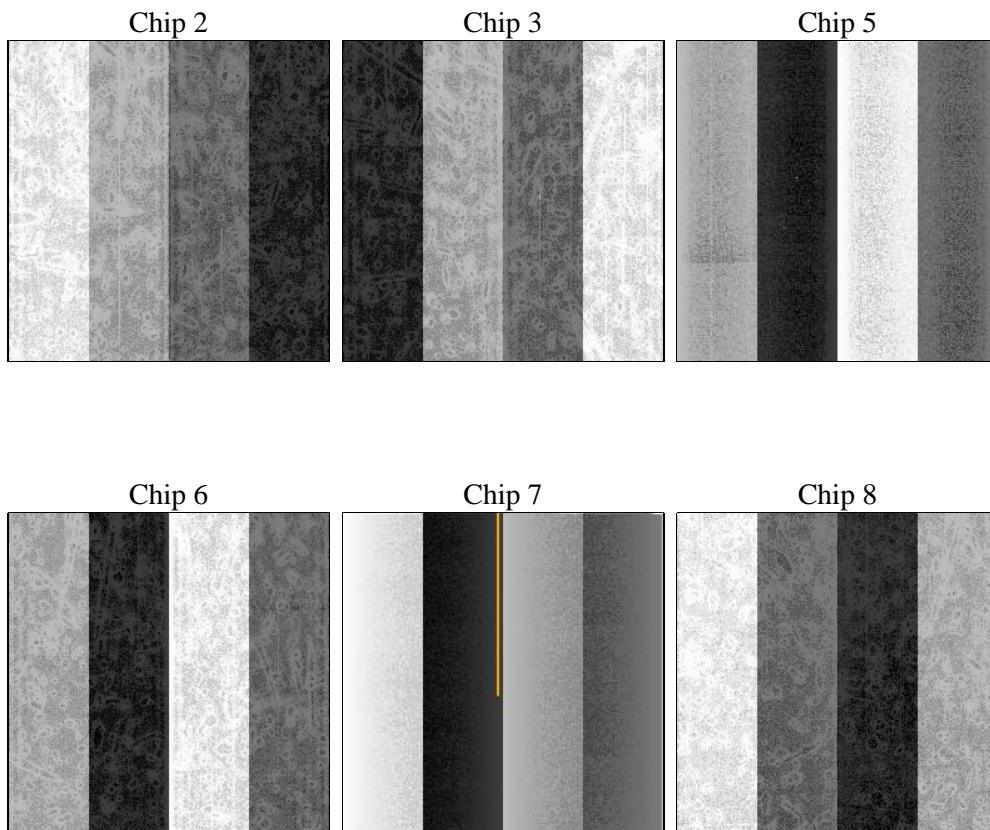
2 OBI

2.1 OBI

2.1.1 Images



2.1.2 Bias



2.1.3 Parameters

obi_num	1	Obi number	sched_exp_time	46591.309000	[s] Scheduled observation exposure time
ascdsver	8.4.5	Processing system revision	ontime	46742.399825871	Sum of GTIs [s]
caldbver	4.5.2	 	ontime2	46739.158835679	Sum of GTIs [s]
date	2012-10-27T18:31:04	Date and time of file creation	ontime3	46742.399825871	Sum of GTIs [s]
revision	3	Processing version of data	ontime5	46742.399825871	Sum of GTIs [s]
			ontime6	46732.676915169	Sum of GTIs [s]
			ontime7	46742.399825871	Sum of GTIs [s]
			ontime8	46742.399825871	Sum of GTIs [s]
			l1events	2127709	Number of level 1 events

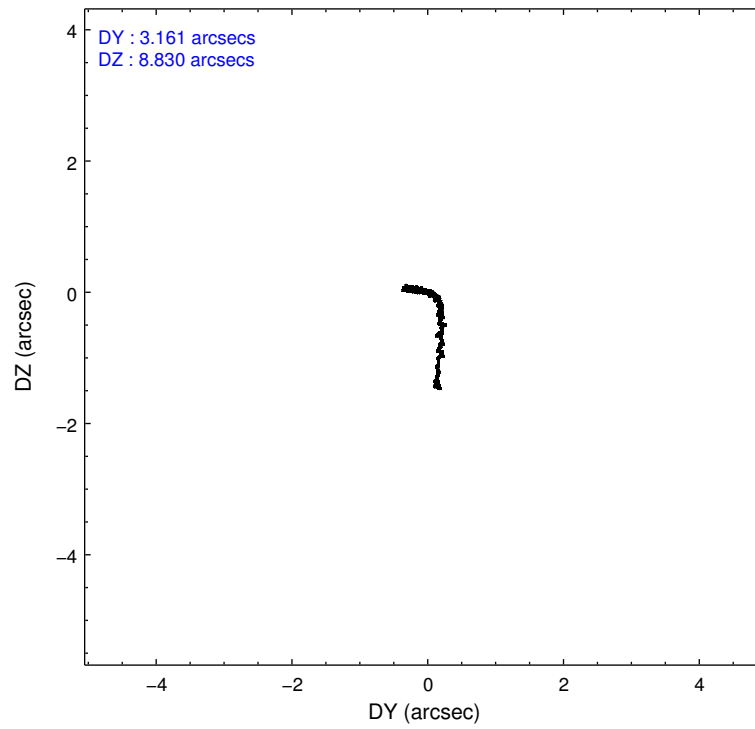
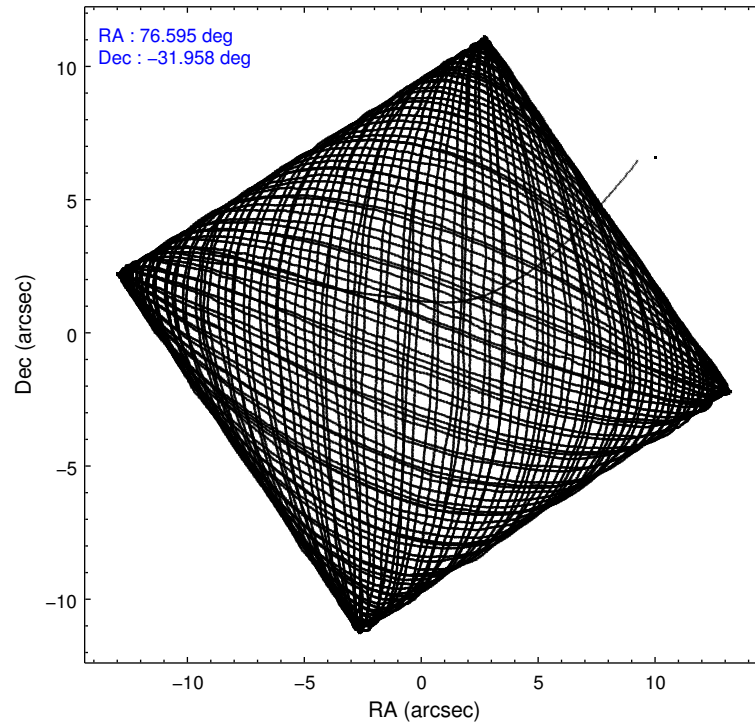
2.1.4 Events

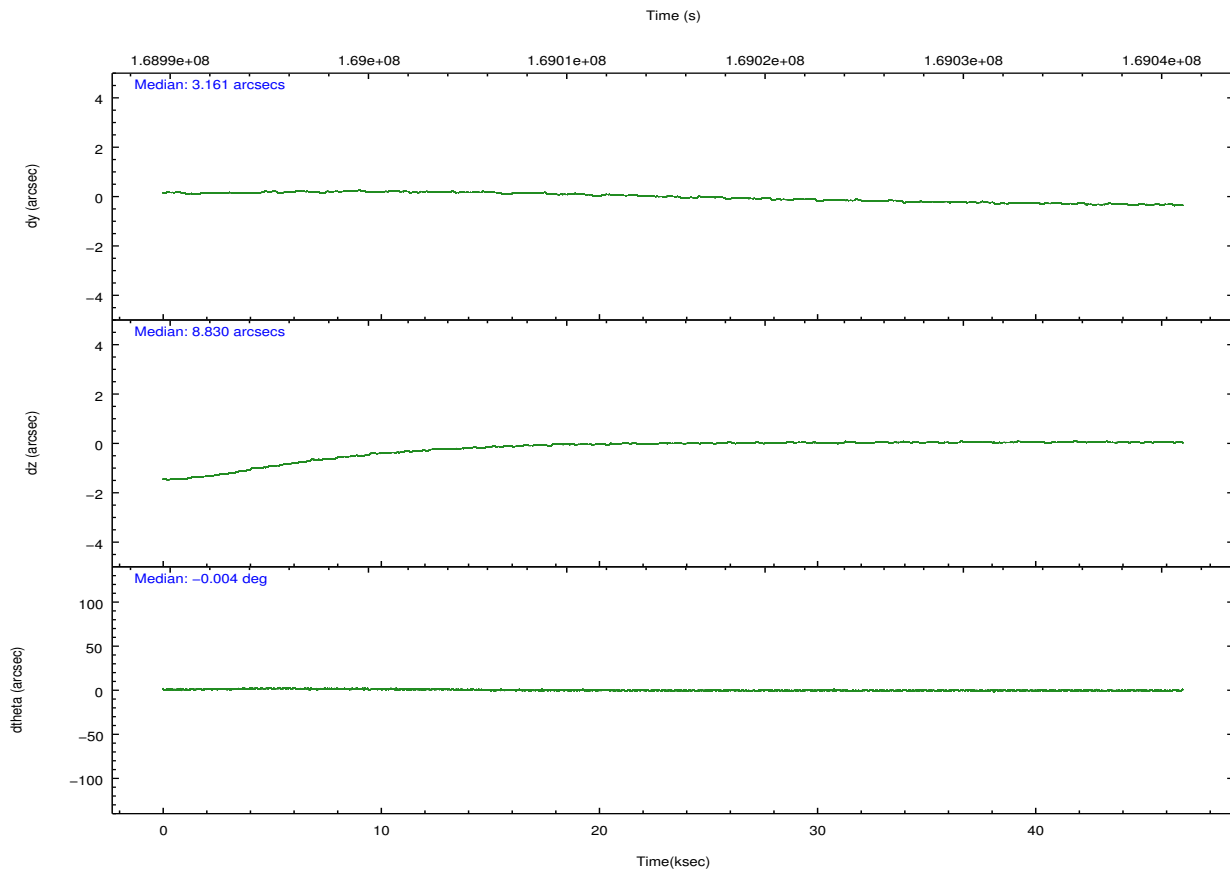
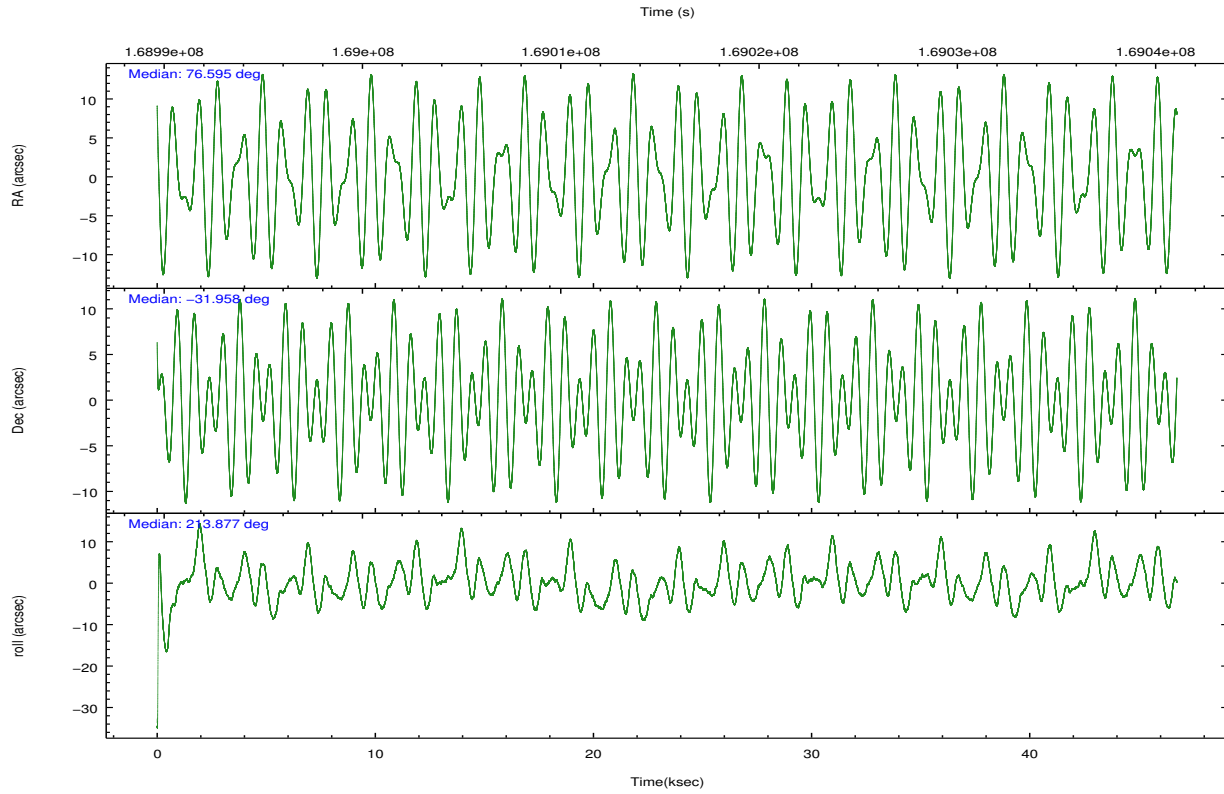
	ccd 2	ccd 3	ccd 5	ccd 6	ccd 7	ccd 8		ccd 2	ccd 3	ccd 5	ccd 6	ccd 7	ccd 8
level 1 events	300925	285123	459807	301370	408344	372140	grade 0 events	22918	21567	37992	23469	18225	32866
rejected events	257531	243327	232114	255041	225029	285625		7%	7%	8%	7%	4%	8%
rejected %	85%	85%	50%	84%	55%	76%	grade 1 events	207	190	680	191	375	258
								0%	0%	0%	0%	0%	0%
							grade 2 events	7855	7078	62705	8470	35597	17611
								2%	2%	13%	2%	8%	4%
							grade 3 events	3460	3638	9261	3755	15837	8372
								1%	1%	2%	1%	3%	2%
							grade 4 events	3431	3564	8996	3589	15856	7800
								1%	1%	1%	1%	3%	2%
							grade 5 events	11467	12389	31674	13215	36779	16658
								3%	4%	6%	4%	9%	4%
							grade 6 events	5872	6106	109646	7205	98434	20102
								1%	2%	23%	2%	24%	5%
							grade 7 events	245715	230591	198853	241476	187241	268473
								81%	80%	43%	80%	45%	72%

2.2 Compared Parameters

Parameter	Planned	Actual	Parameter	Planned	Actual
Instrument	ACIS	ACIS	Obspar format version number	7	7
Detector	ACIS-235678	ACIS-235678	Obspar file type	PREDICTED	ACTUAL
Grating	NONE	NONE	Obspar update status	NONE	UPDATED
Data mode	VFAINT	VFAINT	Number of optional ACIS chips dropped	0	0
Observation mode	POINTING	POINTING	On-chip summing requested	N	N
[deg] Pointing RA	76.609129	76.59541290752611	Subarray requested	NONE	NONE
[deg] Pointing Dec	-31.933459	-31.95806353905583	Alternating exposures requested	N	N
[deg] Pointing Roll	213.736628	213.8859851131224	[s] Primary exposure time	0.000000	3.2
[mm] SIM focus pos	-0.684267	-0.6828225247311905			
[mm] SIM defocus	0	0.001444936568705701			
[mm] SIM translation stage pos	-190.132523	-190.1425803651734			
[mm] SIM translation stage offset	0	0.01005778216563158			
[s] Observation start time (MET)	168992142.184000	168990987.52707			
Observation start date	2003-05-10T22:14:38	2003-05-10T21:56:27			
[s] Observation end time (MET)	169038734.184000	169039048.2416			
Observation end date	2003-05-11T11:11:10	2003-05-11T11:17:28			
Read mode	TIMED	TIMED			

2.3 Aspect



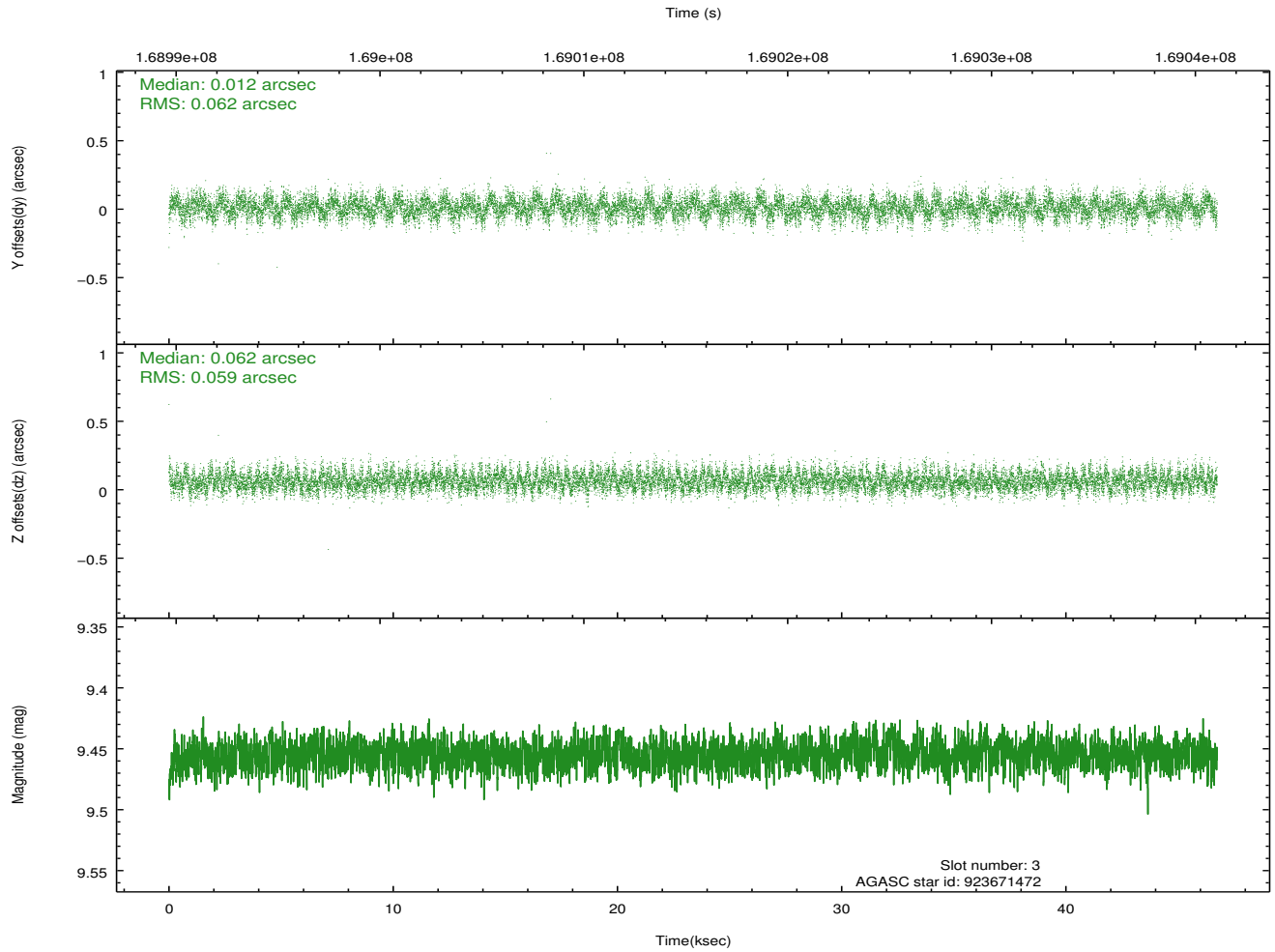
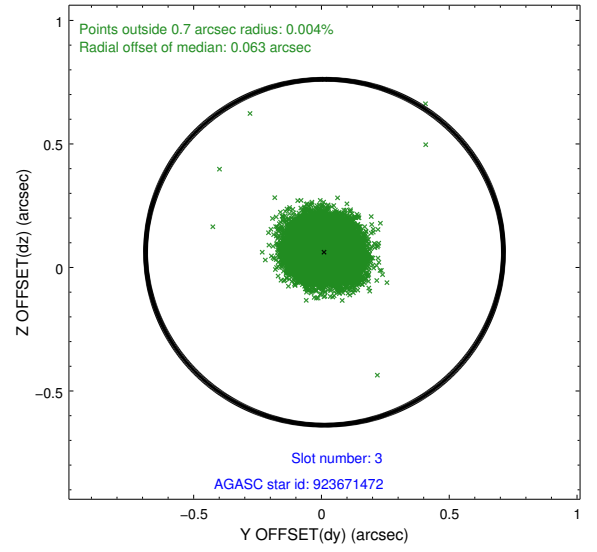
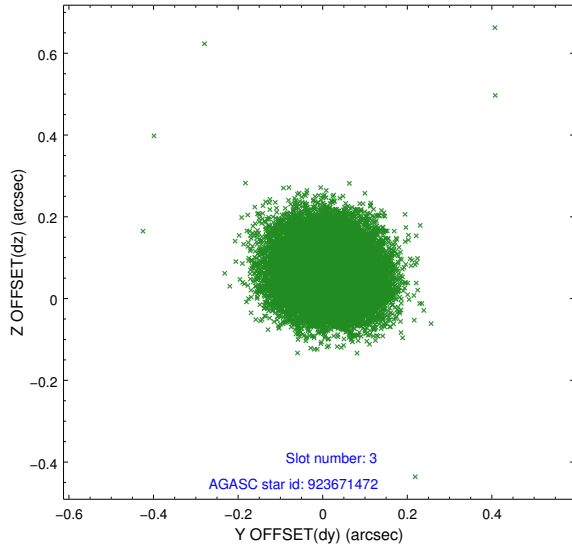


Slot Statistics

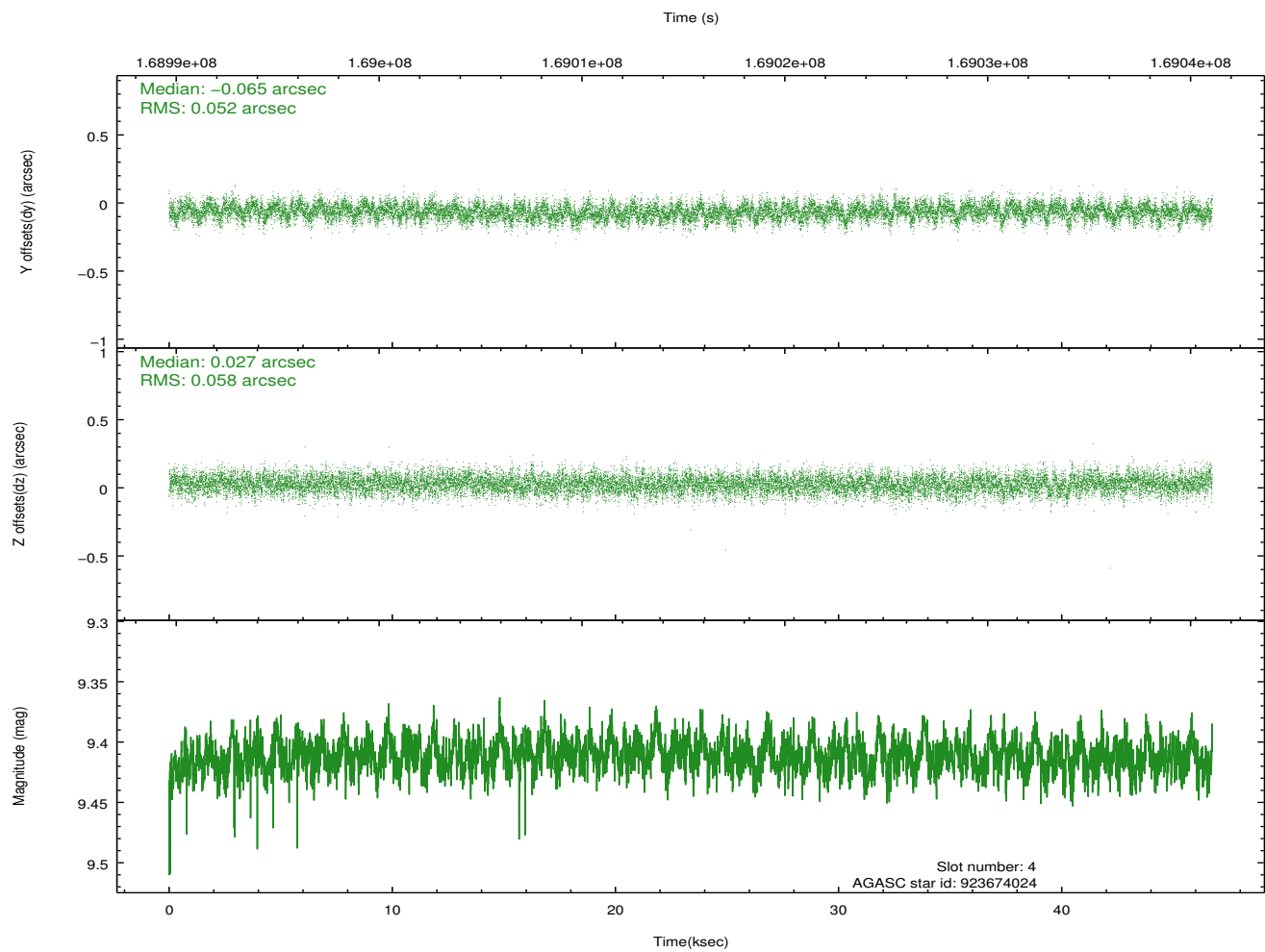
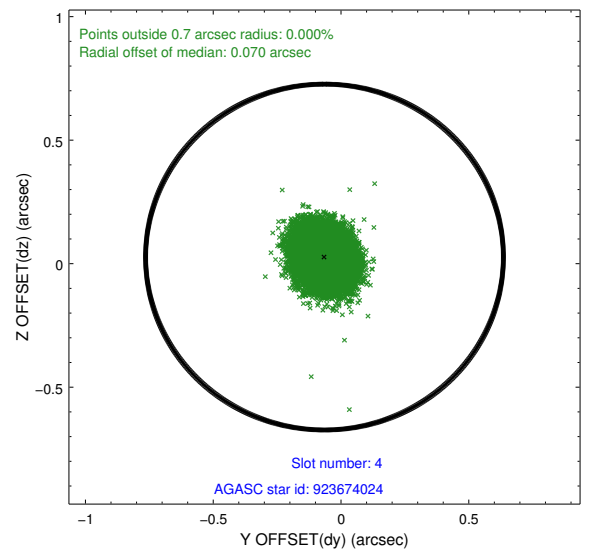
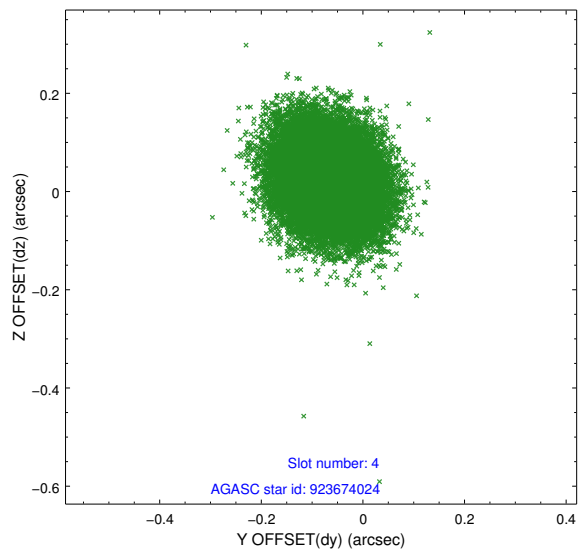
slot	status	id	mag	n_pts	med_dy	med_dz	dr1	dr2	ra	dec	mean_y	mean_z
0	FID	ACIS-S-2	7.11	11403	-0.025	-0.022	0.014	0.032	0.000000	0.000000	-755.80	-1729.79
1	FID	ACIS-S-4	7.20	11403	0.021	0.019	0.018	0.031	0.000000	0.000000	2157.52	178.75
2	FID	ACIS-S-5	7.24	11402	-0.027	0.013	0.012	0.020	0.000000	0.000000	-1808.66	172.39
3	GUIDE	923671472	9.46	22795	0.012	0.062	0.092	0.146	75.937049	-31.978862	1801.62	-998.01
4	GUIDE	923674024	9.41	22764	-0.065	0.027	0.083	0.136	76.201999	-31.588251	350.31	-1724.47
5	GUIDE	923675288	8.76	22799	-0.006	-0.014	0.068	0.112	76.179165	-31.748597	727.09	-1282.02
6	GUIDE	923672216	9.43	22793	0.079	-0.131	0.108	0.182	75.576169	-31.695627	2165.05	-2456.45
7	GUIDE	923670360	9.31	22742	-0.018	0.058	0.080	0.131	76.491362	-32.387684	1206.33	1161.56

2.4 Star Slots

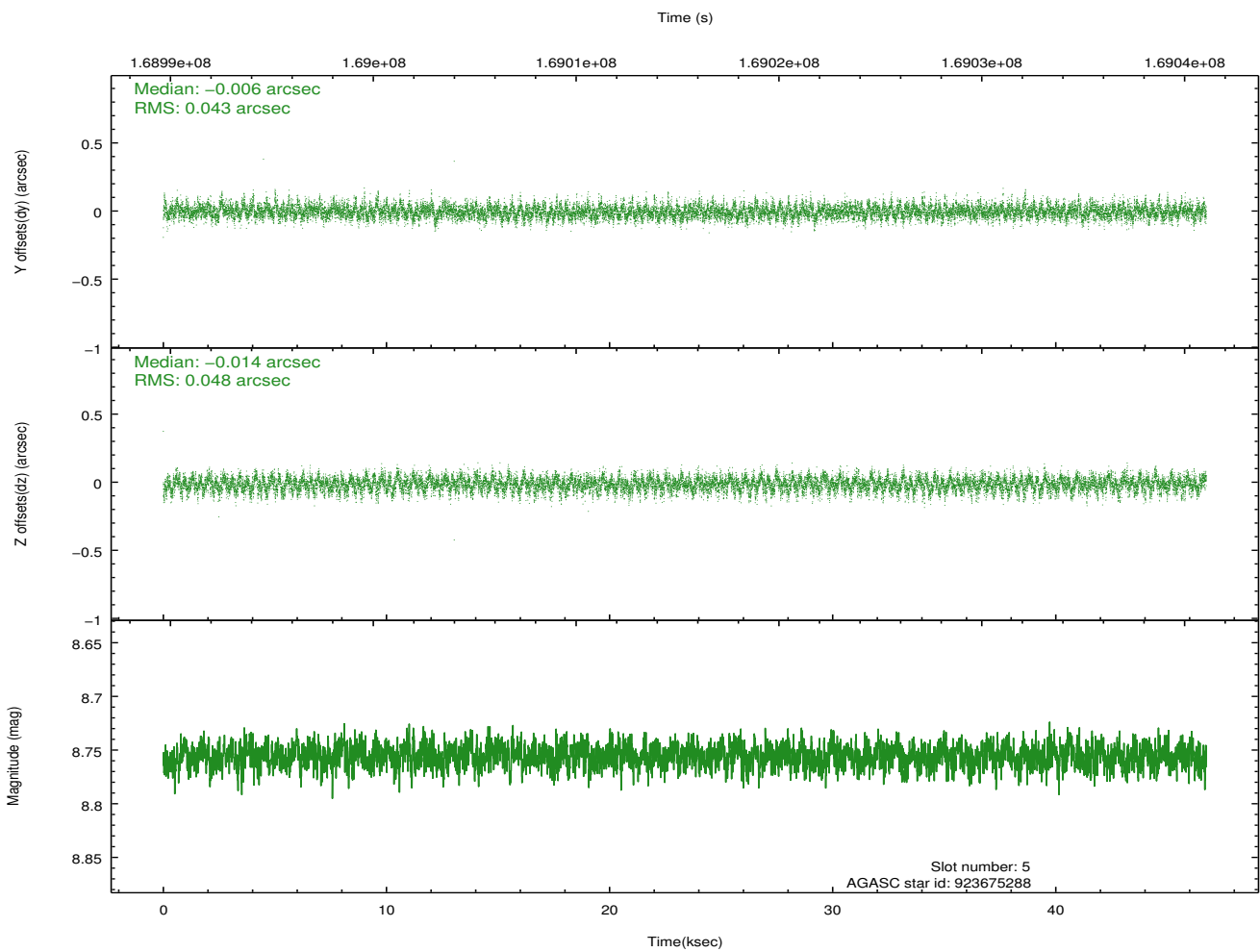
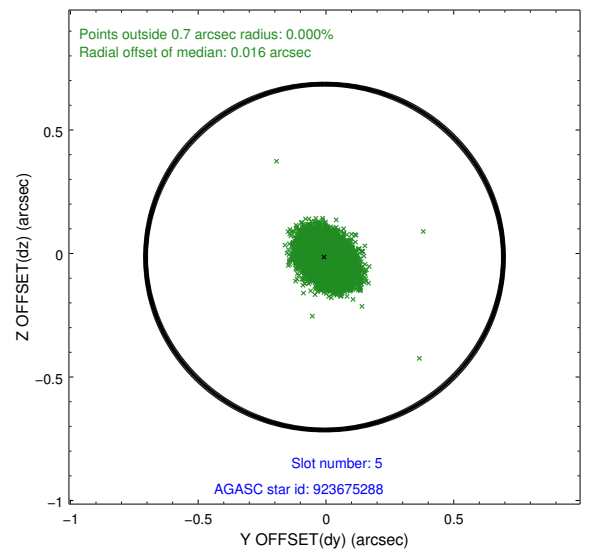
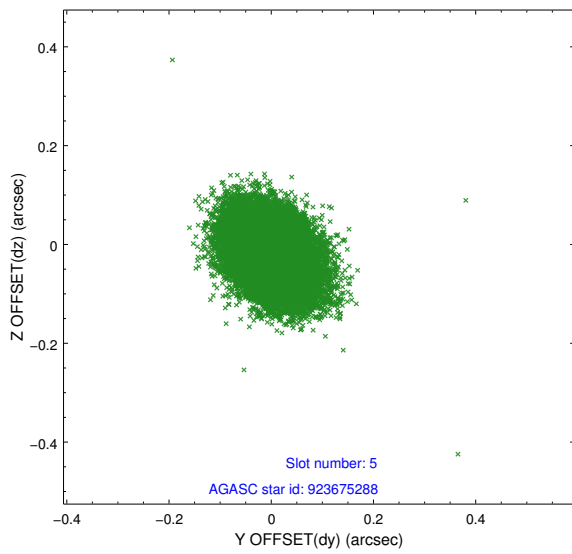
2.4.1 Slot 3



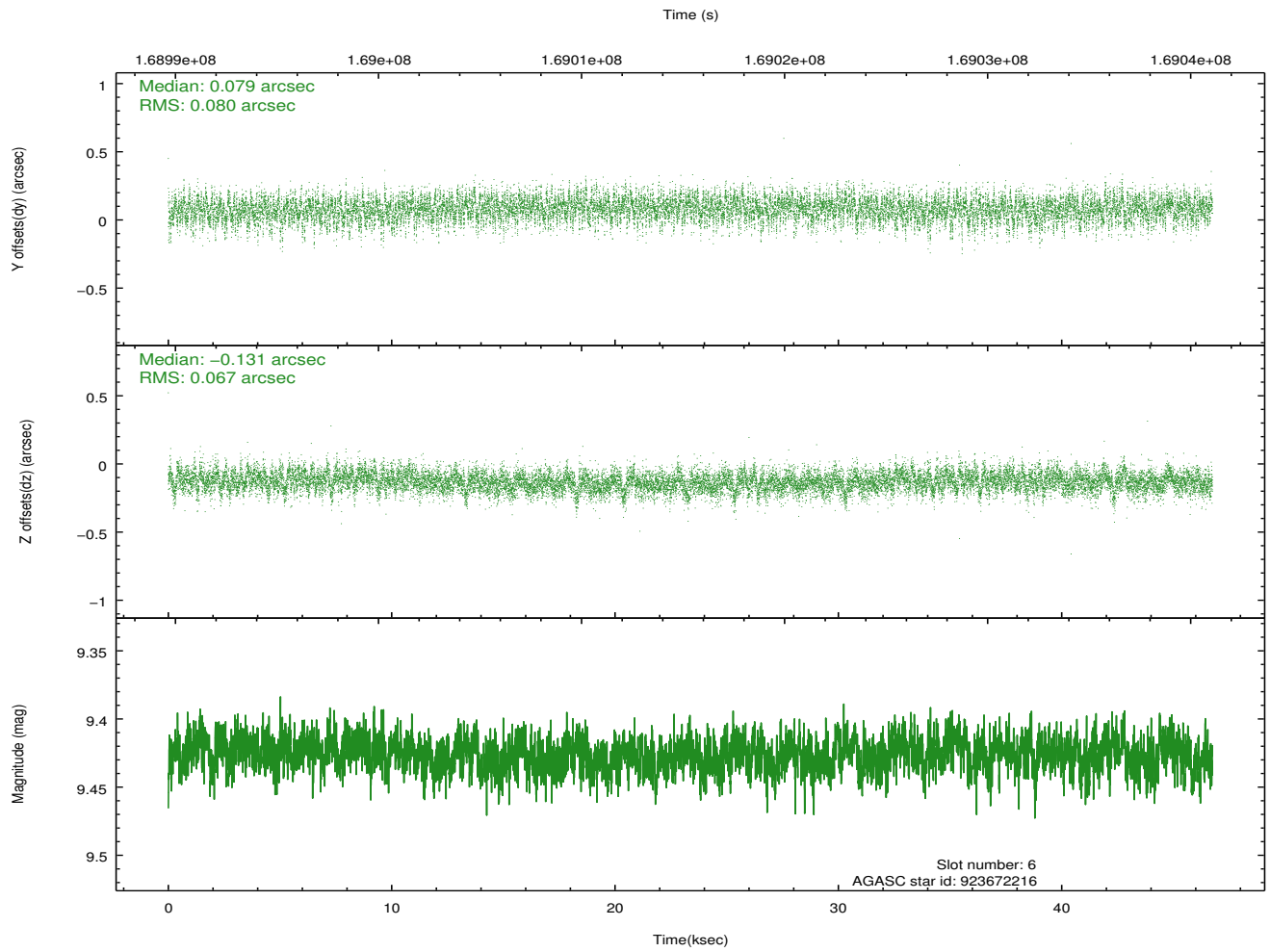
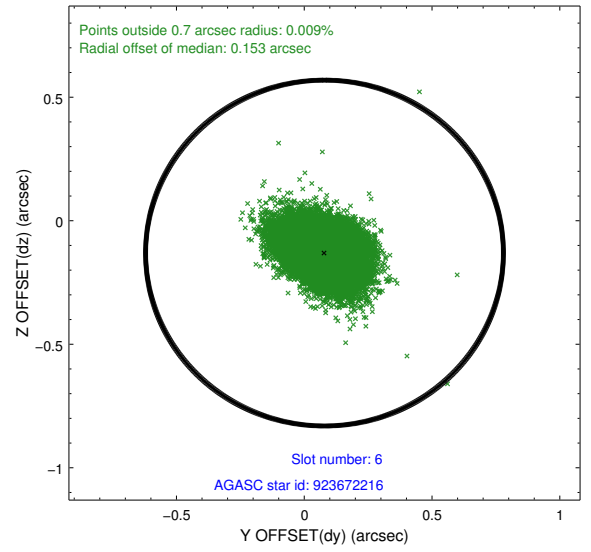
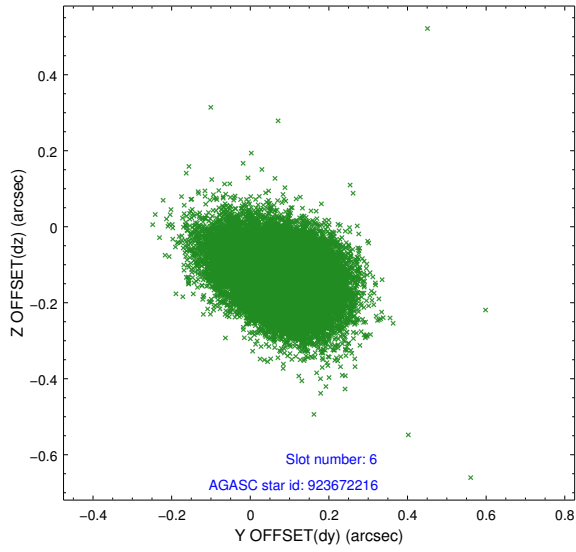
2.4.2 Slot 4



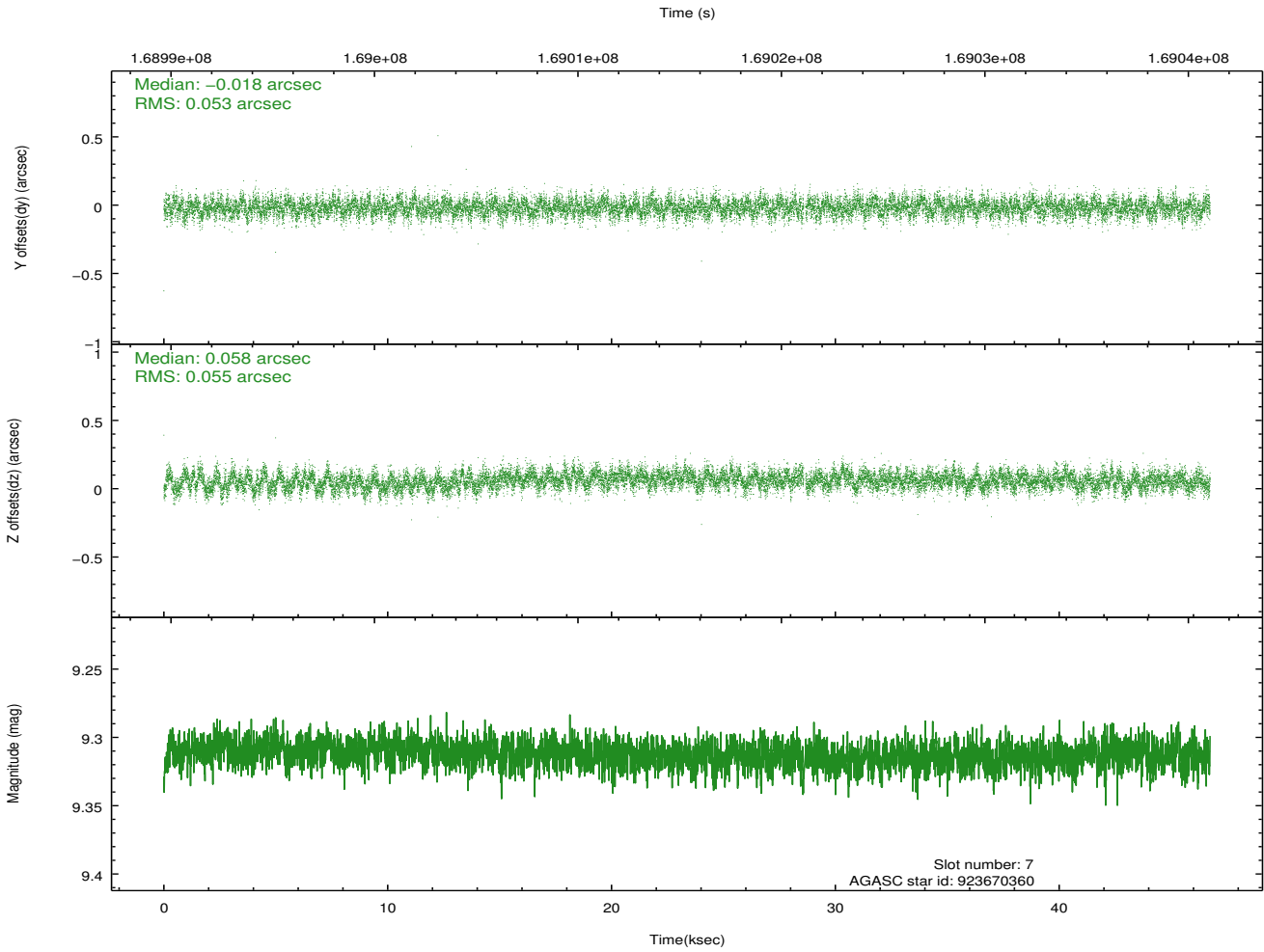
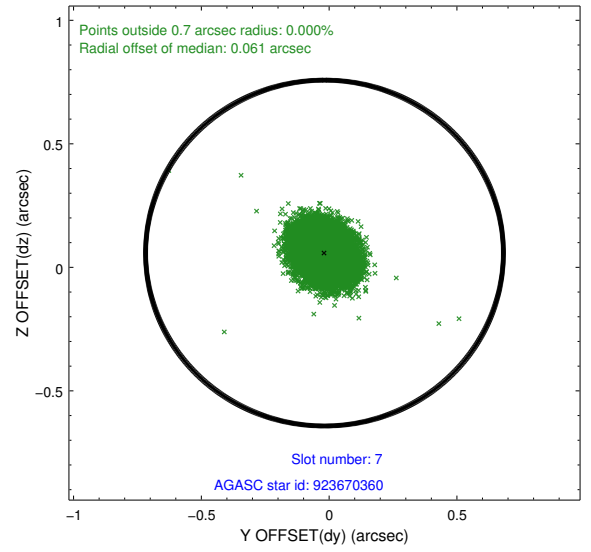
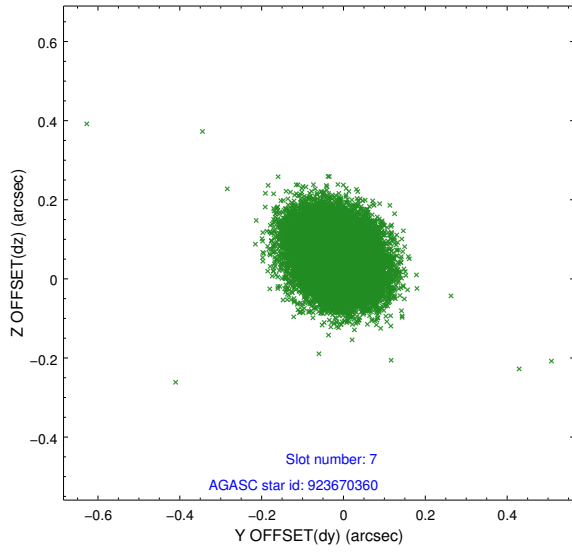
2.4.3 Slot 5



2.4.4 Slot 6

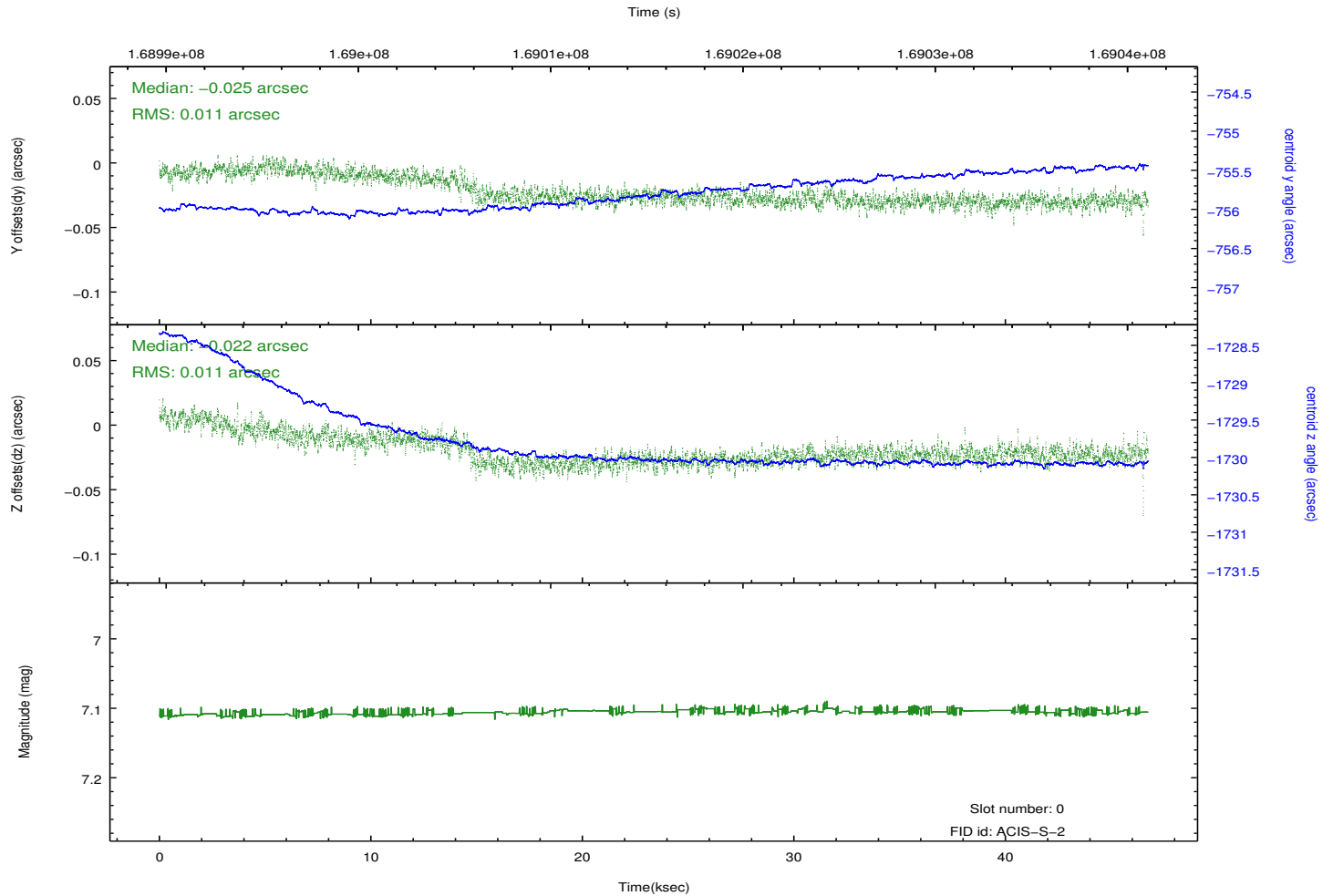
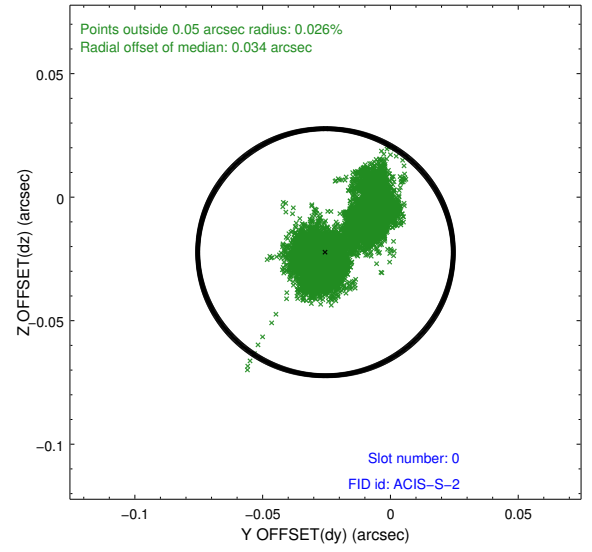
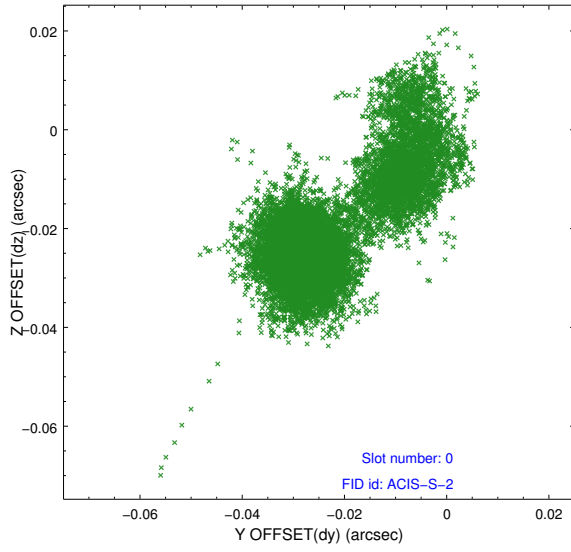


2.4.5 Slot 7

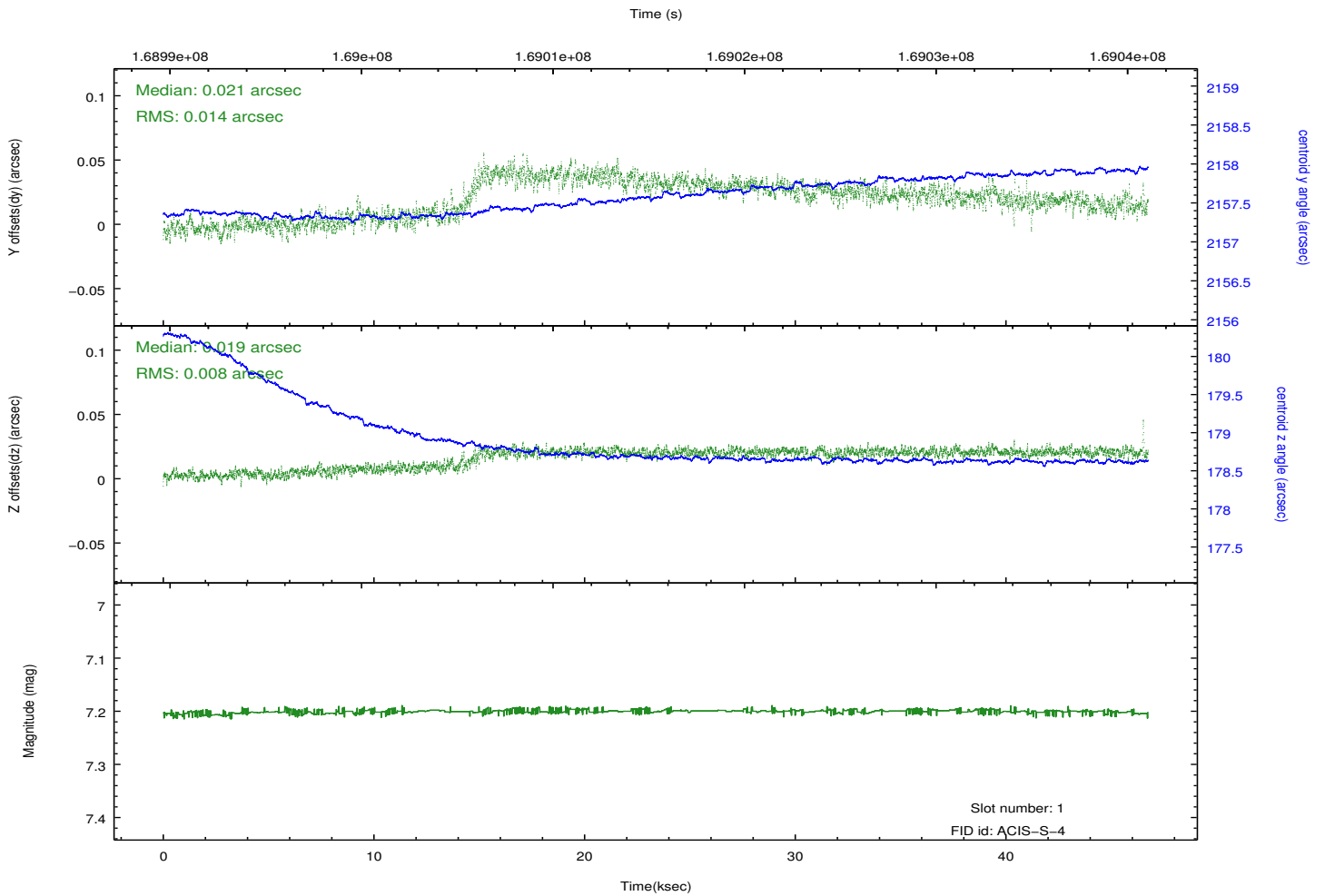
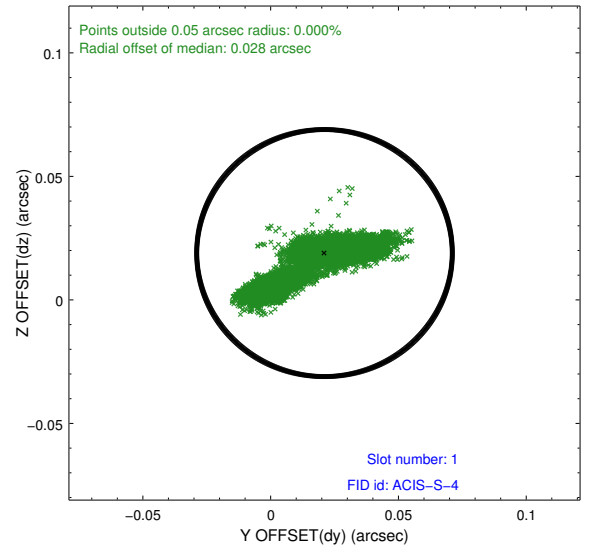
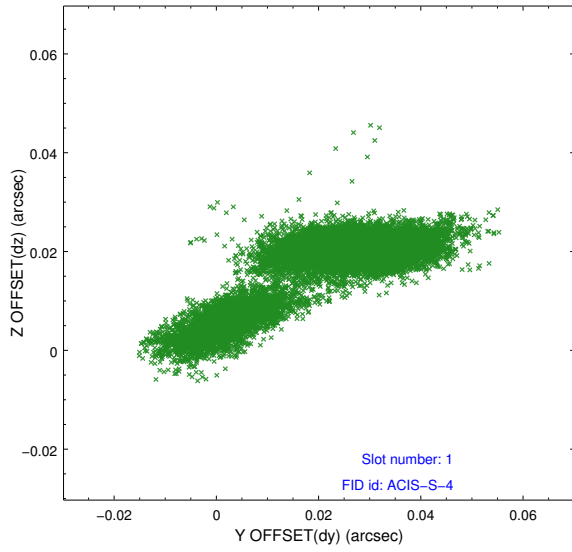


2.5 FID Slots

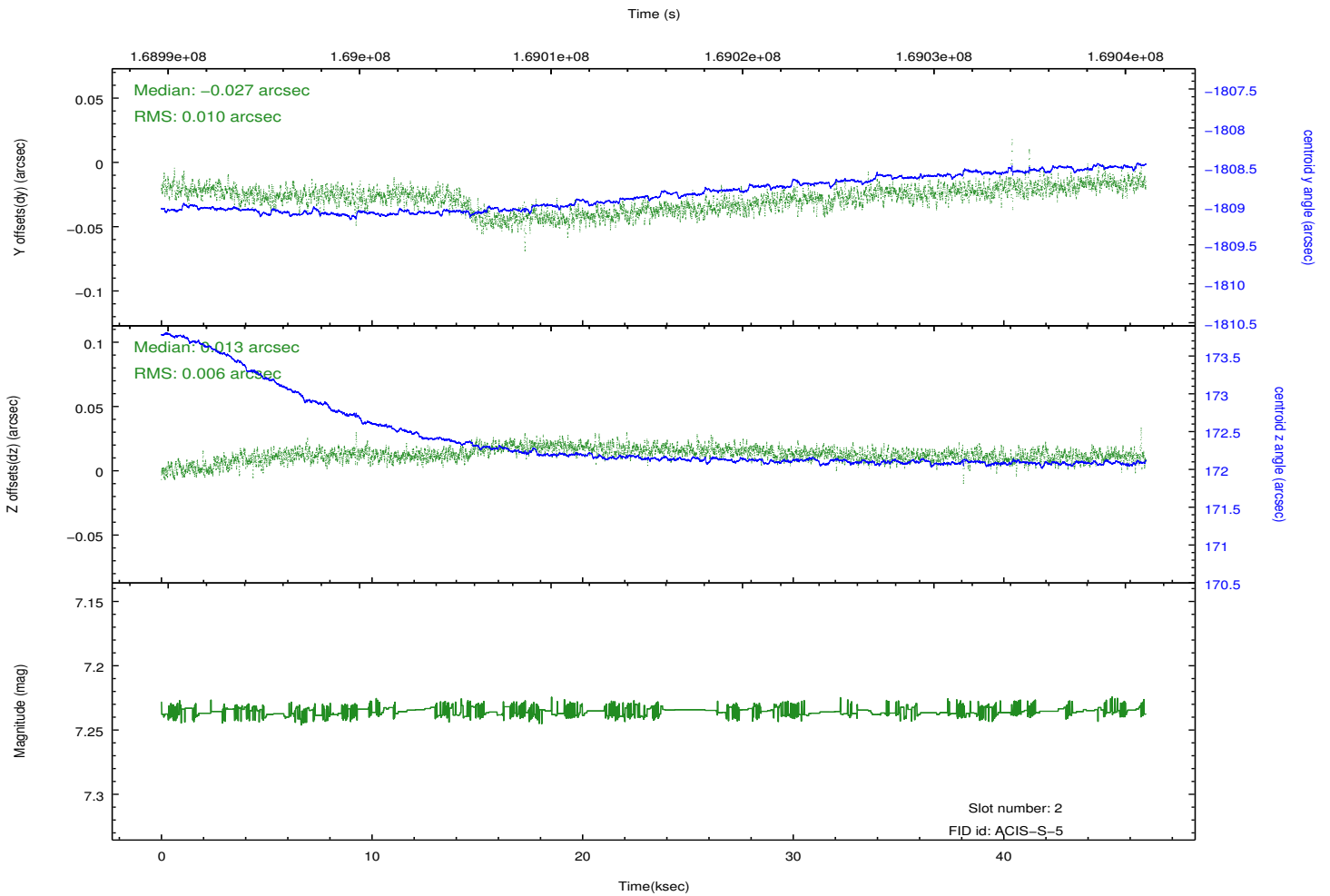
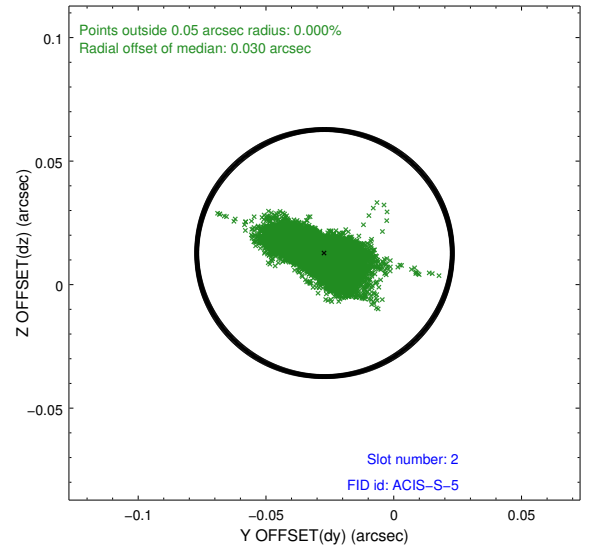
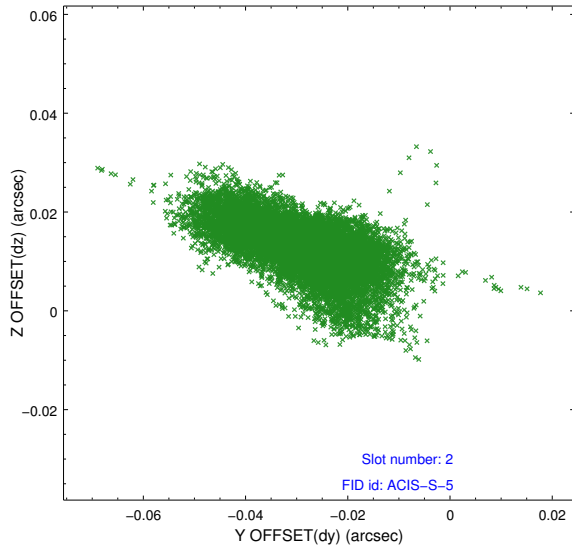
2.5.1 Slot 0



2.5.2 Slot 1



2.5.3 Slot 2



A Summary

A.1 Status

V&V Scientist	Beth Sundheim
V&V Date (YYYY-MM-DD)	2012.11.15
V&V Edition	1
V&V Disposition and Status	OK
V&V Charge Time	46.742

A.2 Comments