

V&V Reference Report

L2 ASCDS Version : 8.4.5

Observation 4162 - L2 Version 3
Chandra X-Ray Center

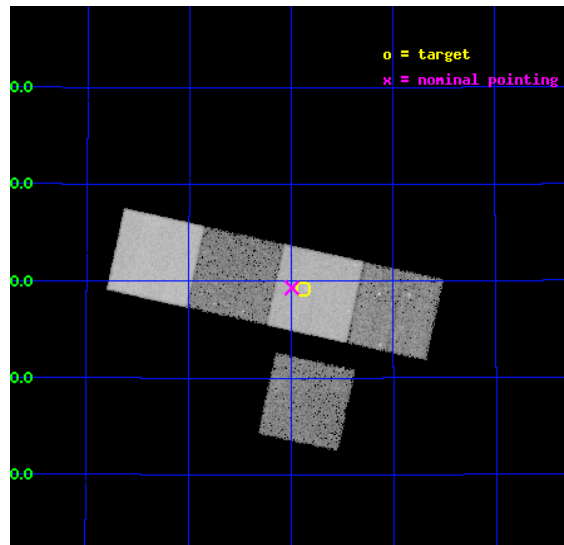
L2 Processing Date : Nov 5 2012

Contents

1	Front	2
2	OBI	3
2.1	OBI	3
2.1.1	Images	3
2.1.2	Bias	3
2.1.3	Parameters	4
2.1.4	Events	4
2.2	Compared Parameters	5
2.3	Aspect	6
2.4	Star Slots	9
2.4.1	Slot 3	9
2.4.2	Slot 4	10
2.4.3	Slot 5	11
2.4.4	Slot 6	12
2.4.5	Slot 7	13
2.5	FID Slots	14
2.5.1	Slot 0	14
2.5.2	Slot 1	15
2.5.3	Slot 2	16
A	Summary	17
A.1	Status	17
A.2	Comments	17

1 Front

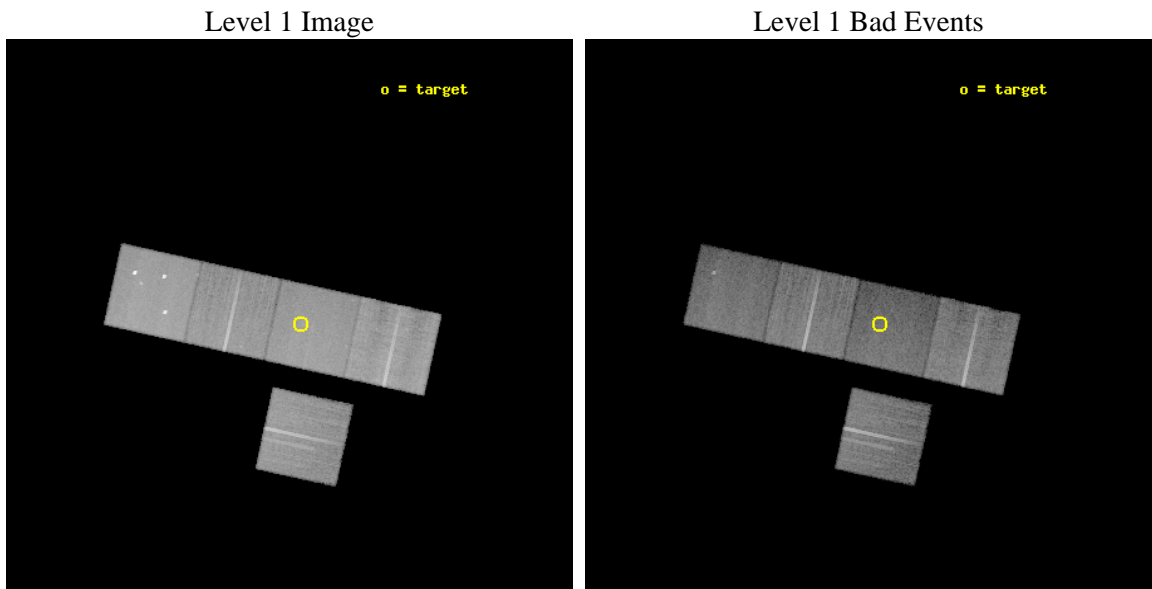
seq_num	800318	Sequence number
obs_id	4162	Observation id
title	DISENTANGLING THE INFLUENCE OF COSMOLOGICAL PARAMETERS AND STRUCTURE FORMATION IN THE UNIVERSE WITH DISTANT CLUSTERS OF	Proposal titl
observer	Prof Melville Ulmer	Principal investigator
object	RXJ1205	Source name
dtcycle	0	
cycle	P	events from which exps? Prim/Second/Both
ra_targ	181.469167	Observer's specified target RA [deg]
dec_targ	44.486111	Observer's specified target Dec [deg]
ra_nom	181.4979958093	Nominal RA [deg]
dec_nom	44.488866363039	Nominal Dec [deg]
roll_nom	12.357426708599	Nominal Roll [deg]
revision	3	Processing version of data
ontime	30100.999942094	Sum of GTIs [s]
lifetime	29707.708217817	Lifetime [s]
ontime3	30091.577111185	Sum of GTIs [s]
ontime5	30100.999942094	Sum of GTIs [s]
ontime6	30097.858981848	Sum of GTIs [s]
ontime7	30100.999942094	Sum of GTIs [s]
ontime8	30100.999942094	Sum of GTIs [s]
l2events	233803	Number of level 2 events



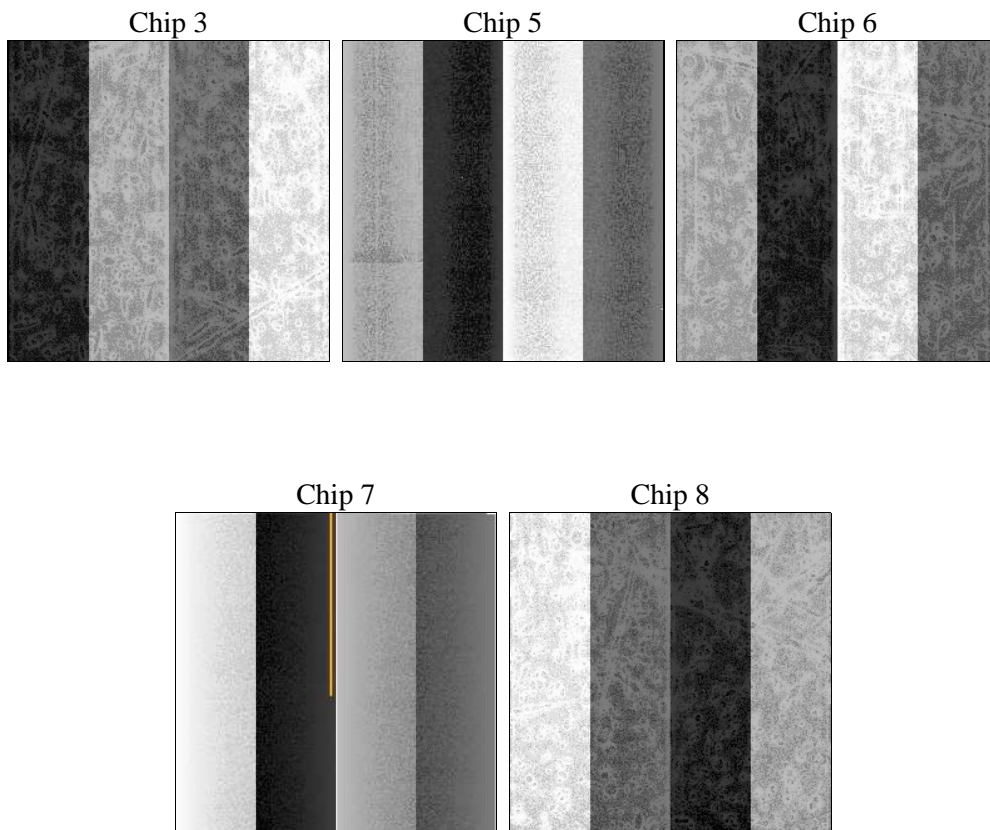
2 OBI

2.1 OBI

2.1.1 Images



2.1.2 Bias



2.1.3 Parameters

obi_num	0	Obi number	sched_exp_time	30000.000000	[s] Scheduled observation exposure time
ascdsver	8.4.5	Processing system revision	ontime	30100.999942094	Sum of GTIs [s]
caldbver	4.5.2	 	ontime3	30091.577111185	Sum of GTIs [s]
date	2012-11-05T02:51:25	Date and time of file creation	ontime5	30100.999942094	Sum of GTIs [s]
revision	3	Processing version of data	ontime6	30097.858981848	Sum of GTIs [s]
			ontime7	30100.999942094	Sum of GTIs [s]
			ontime8	30100.999942094	Sum of GTIs [s]
			l1events	969855	Number of level 1 events

2.1.4 Events

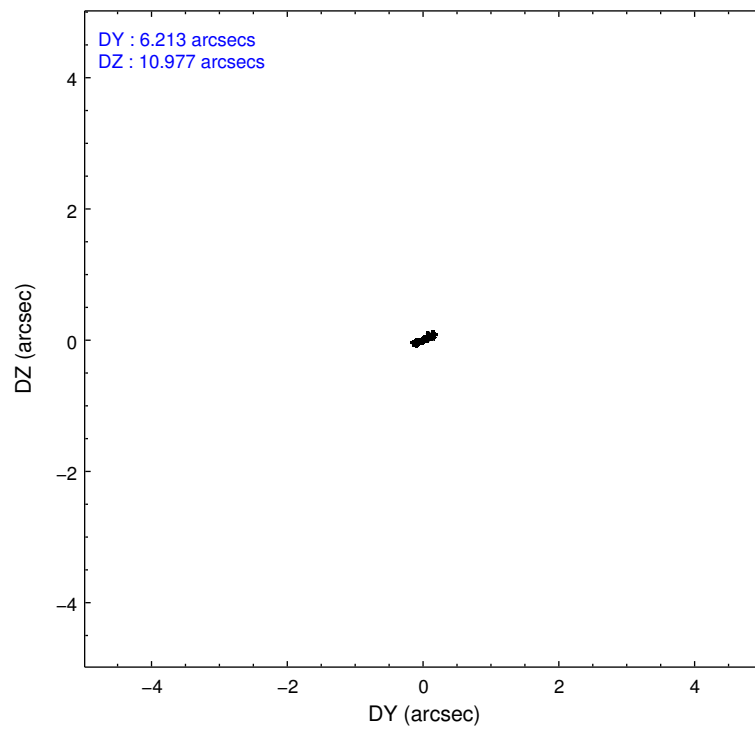
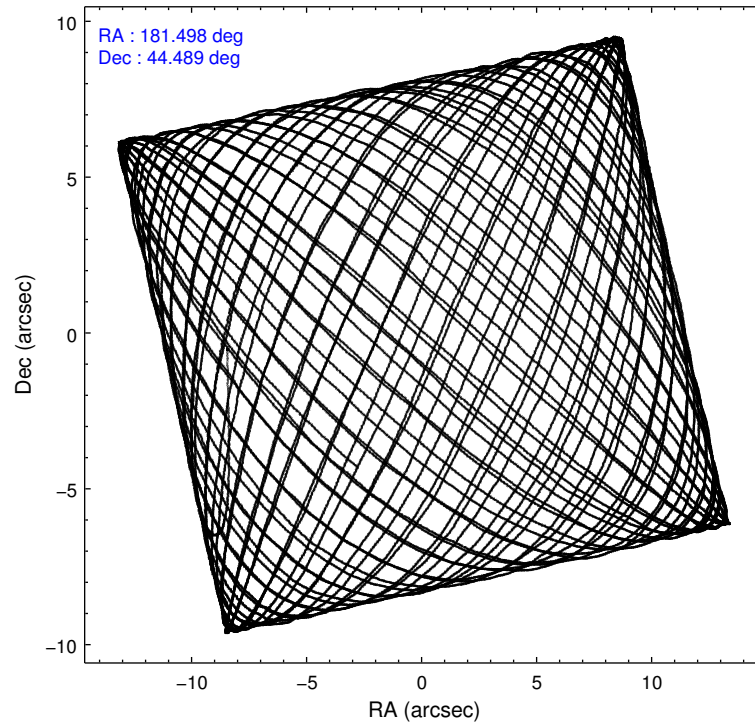
	ccd 3	ccd 5	ccd 6	ccd 7	ccd 8
level 1 events	164536	237288	172491	183067	212473
rejected events	148563	113531	154557	99043	161688
rejected %	90%	47%	89%	54%	76%

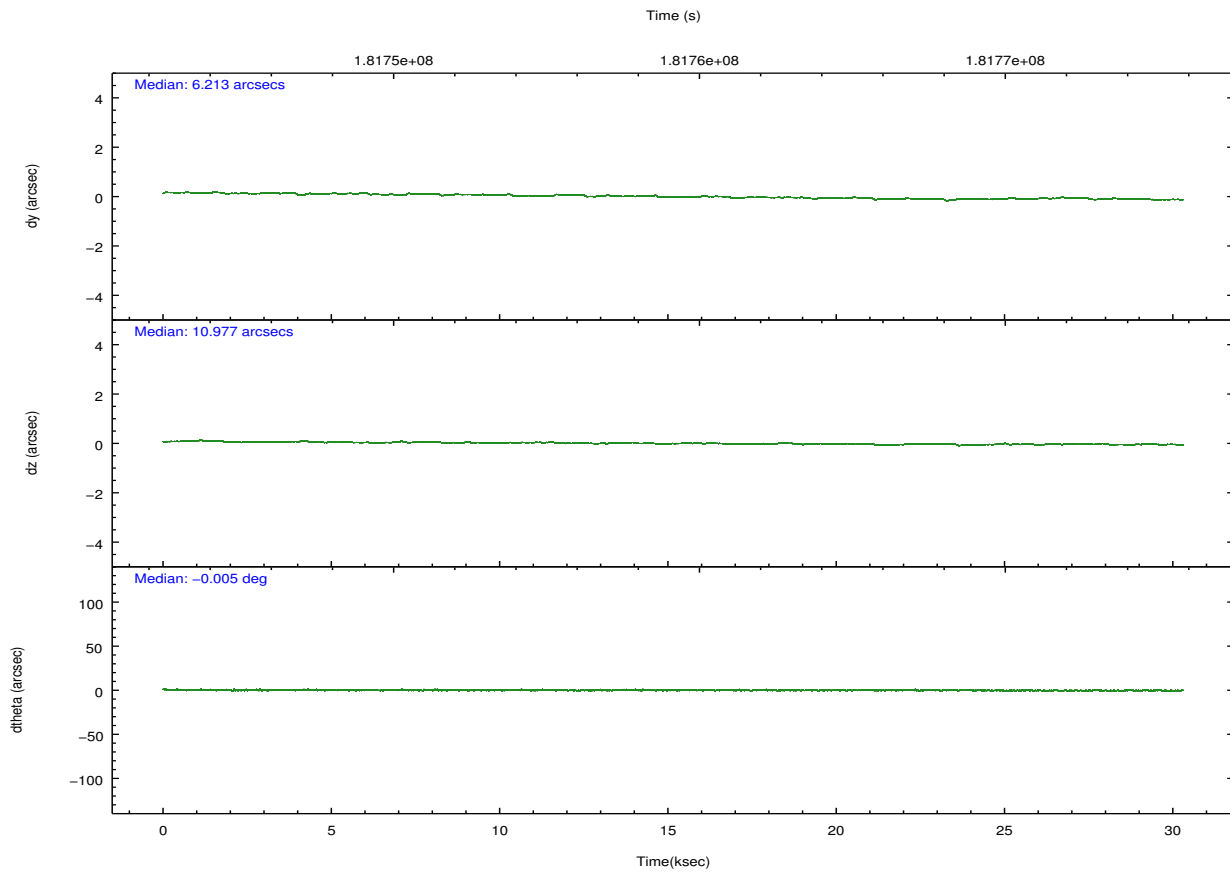
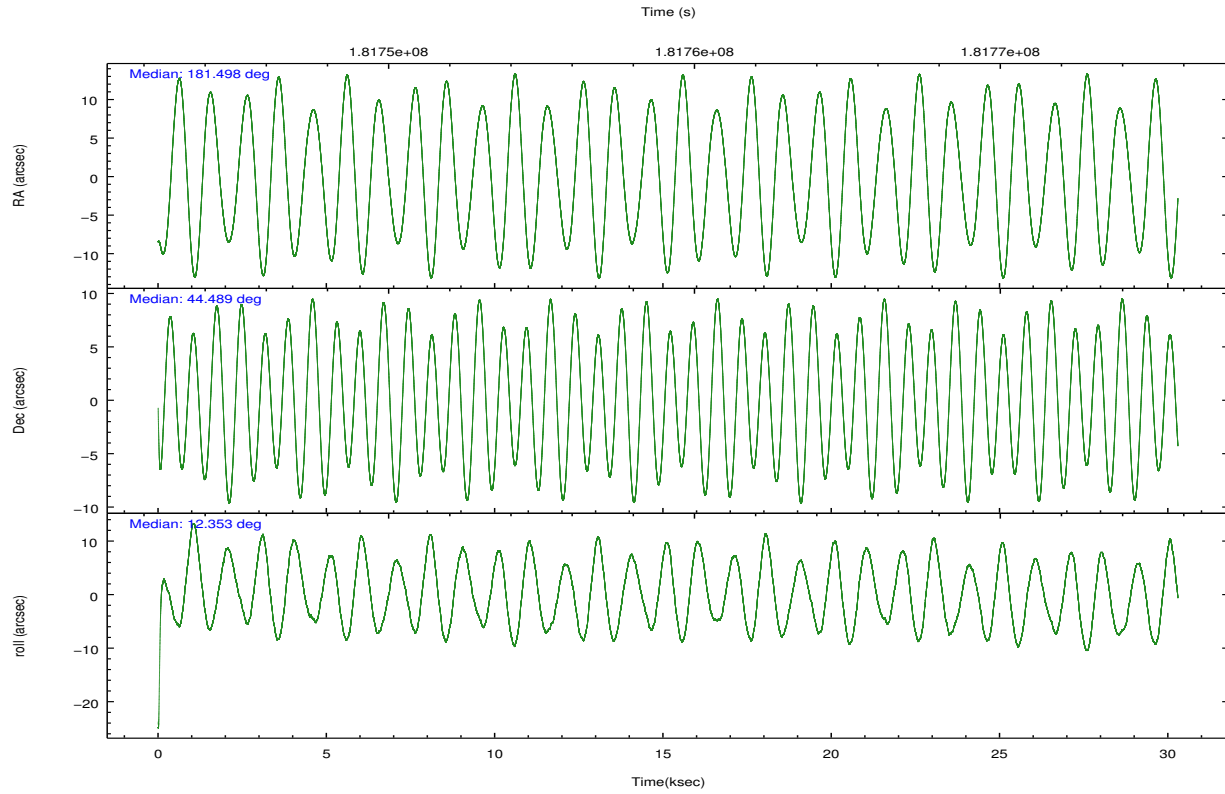
	ccd 3	ccd 5	ccd 6	ccd 7	ccd 8
grade 0 events	5867	20142	6751	7947	16777
	3%	8%	3%	4%	7%
grade 1 events	94	552	71	171	152
	0%	0%	0%	0%	0%
grade 2 events	3405	36819	3665	16766	10433
	2%	15%	2%	9%	4%
grade 3 events	1857	5184	1997	7949	5896
	1%	2%	1%	4%	2%
grade 4 events	1843	4942	1980	7880	5491
	1%	2%	1%	4%	2%
grade 5 events	6414	18361	6525	19361	9092
	3%	7%	3%	10%	4%
grade 6 events	3002	56681	3543	43488	12189
	1%	23%	2%	23%	5%
grade 7 events	142054	94607	147959	79505	152443
	86%	39%	85%	43%	71%

2.2 Compared Parameters

Parameter	Planned	Actual	Parameter	Planned	Actual
Instrument	ACIS	ACIS	Obspar format version number	7	7
Detector	ACIS-35678	ACIS-35678	Obspar file type	PREDICTED	ACTUAL
Grating	NONE	NONE	Obspar update status	NONE	UPDATED
Data mode	VFAINT	VFAINT	Number of optional ACIS chips dropped	0	0
Observation mode	POINTING	POINTING	On-chip summing requested	N	N
[deg] Pointing RA	181.470170	181.4979958092955	Subarray requested	NONE	NONE
[deg] Pointing Dec	44.470233	44.48886636303868	Alternating exposures requested	N	N
[deg] Pointing Roll	12.220309	12.35742670859885	[s] Primary exposure time	0.000000	3.1
[mm] SIM focus pos	-0.684267	-0.6828225247311905			
[mm] SIM defocus	0	0.001444936568705701			
[mm] SIM translation stage pos	-190.132523	-190.1425803651734			
[mm] SIM translation stage offset	0	0.01005778216563158			
[s] Observation start time (MET)	181744285.184000	181743258.55836			
Observation start date	2003-10-05T12:30:21	2003-10-05T12:14:18			
[s] Observation end time (MET)	181774285.184000	181775021.25973			
Observation end date	2003-10-05T20:50:21	2003-10-05T21:03:41			
Read mode	TIMED	TIMED			

2.3 Aspect



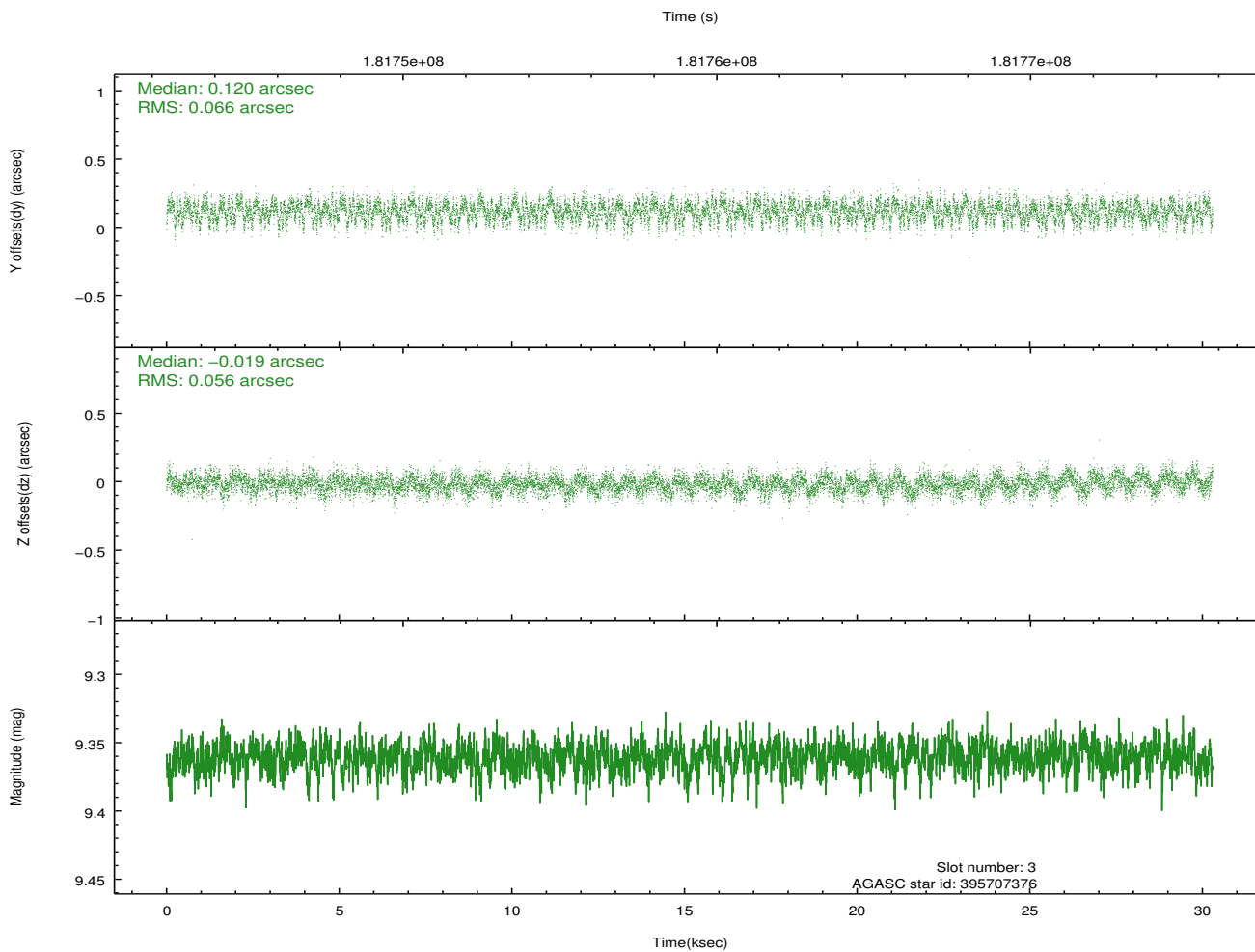
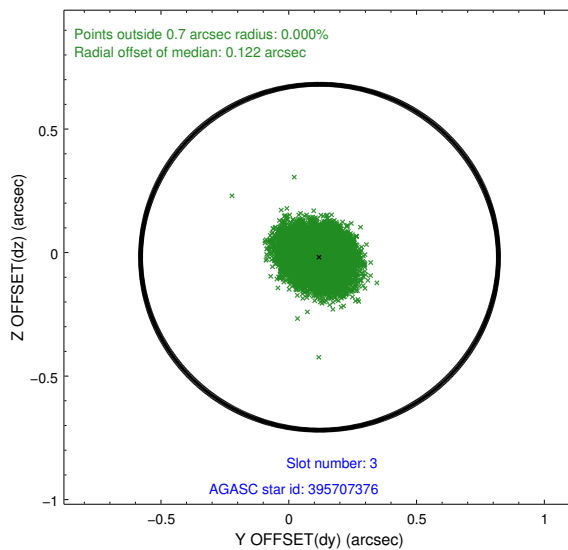
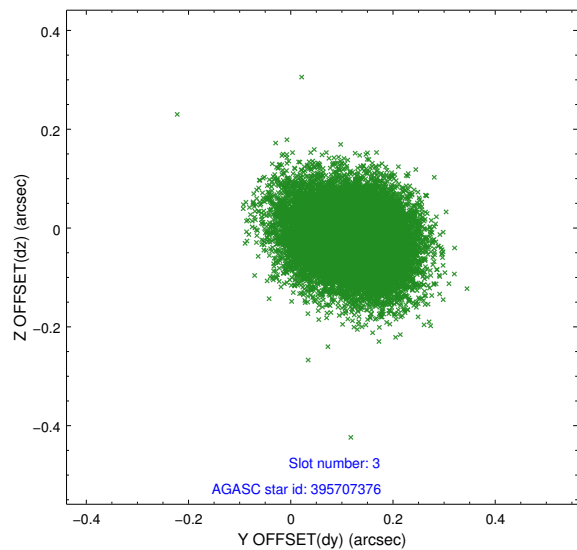


Slot Statistics

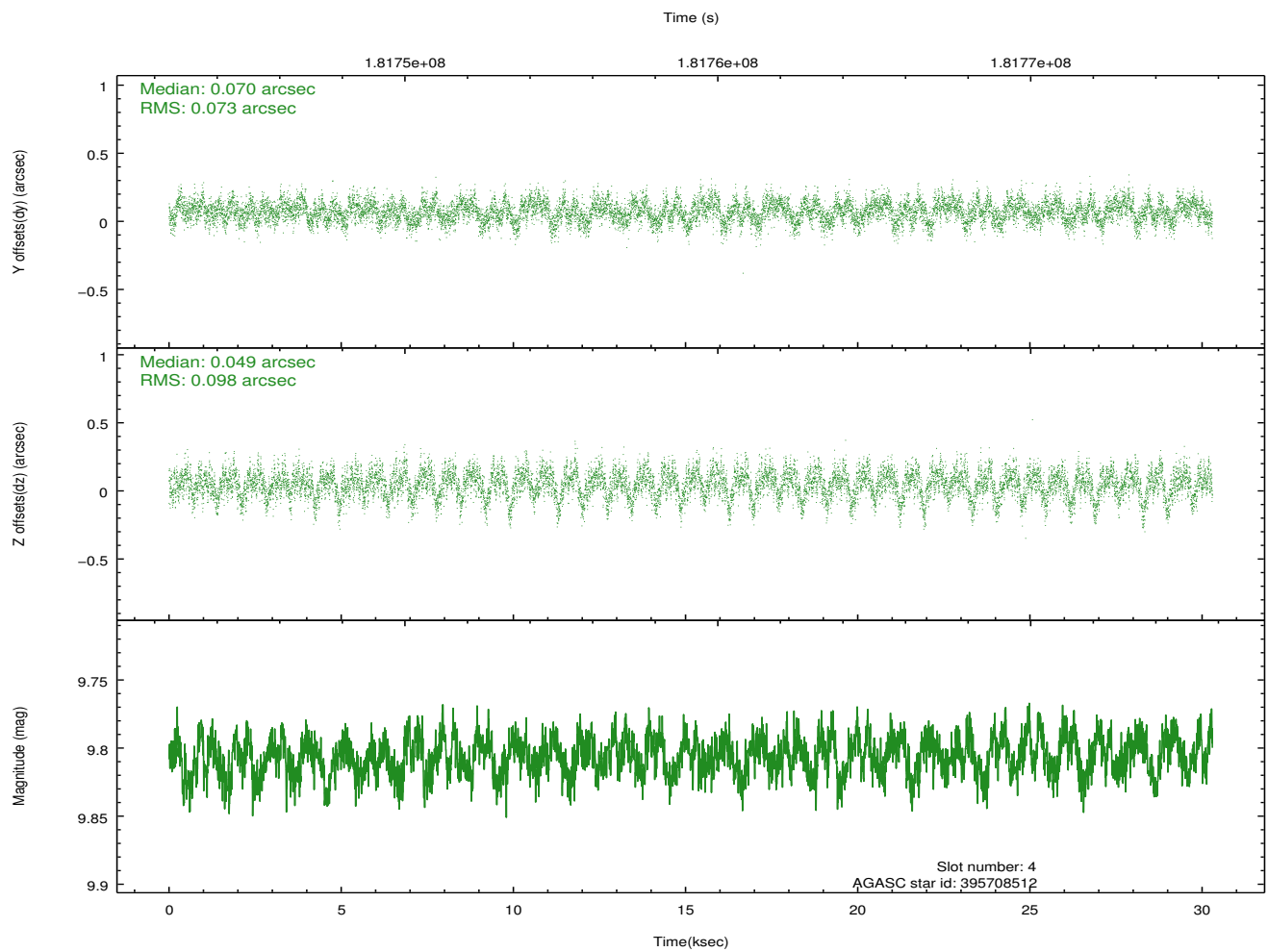
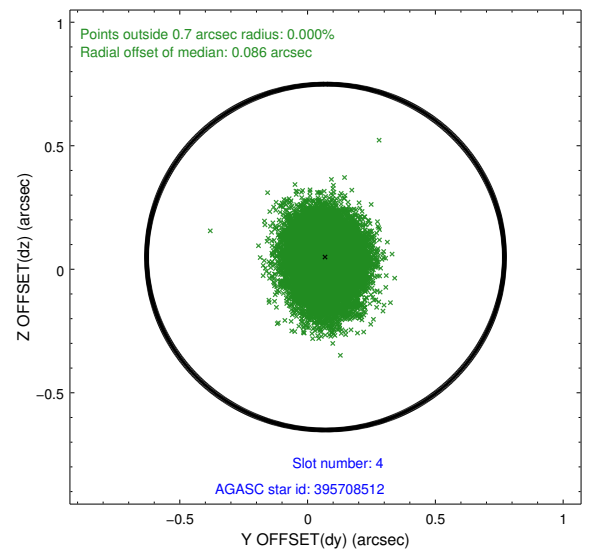
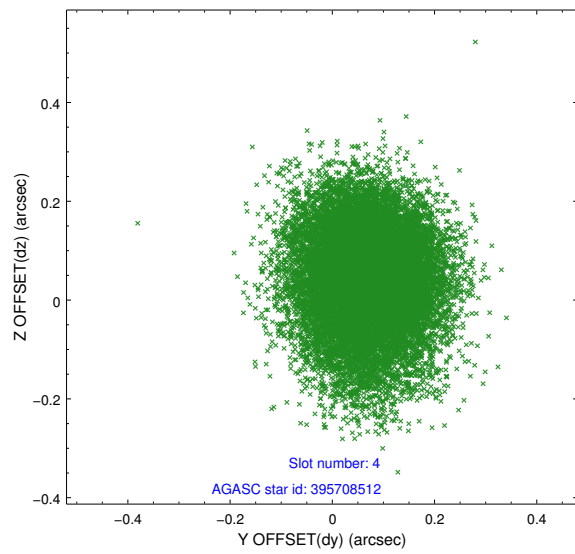
slot	status	id	mag	n_pts	med_dy	med_dz	dr1	dr2	ra	dec	mean_y	mean_z
0	FID	ACIS-S-2	7.10	7389	-0.055	-0.010	0.009	0.022	0.000000	0.000000	-758.98	-1732.22
1	FID	ACIS-S-4	7.20	7388	0.055	0.029	0.008	0.033	0.000000	0.000000	2154.35	176.26
2	FID	ACIS-S-5	7.23	7390	-0.032	-0.010	0.009	0.021	0.000000	0.000000	-1811.74	169.93
3	GUIDE	395707376	9.36	14767	0.120	-0.019	0.092	0.146	180.967983	44.858789	-955.29	1642.25
4	GUIDE	395708512	9.81	14768	0.070	0.049	0.130	0.211	181.398075	44.161736	-416.74	-1045.33
5	GUIDE	395709536	9.96	14764	-0.032	0.017	0.129	0.206	181.395770	44.236081	-365.68	-782.92
6	GUIDE	395709608	8.36	14777	-0.009	-0.106	0.070	0.111	181.055130	44.450389	-1056.67	158.60
7	GUIDE	395709808	8.53	14779	-0.145	0.070	0.071	0.110	182.156296	44.413388	1682.85	-565.84

2.4 Star Slots

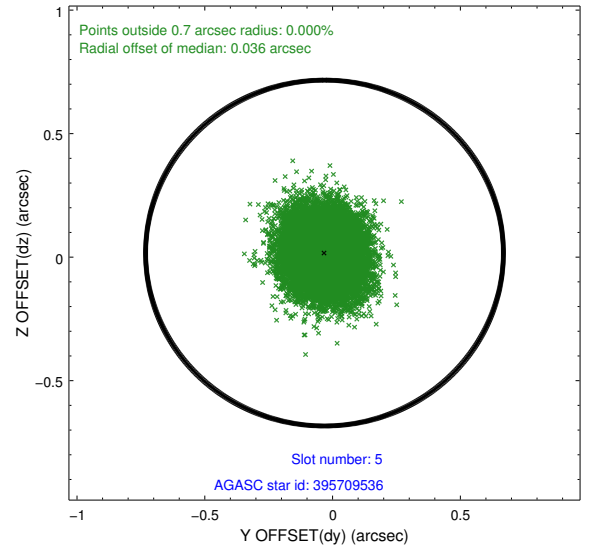
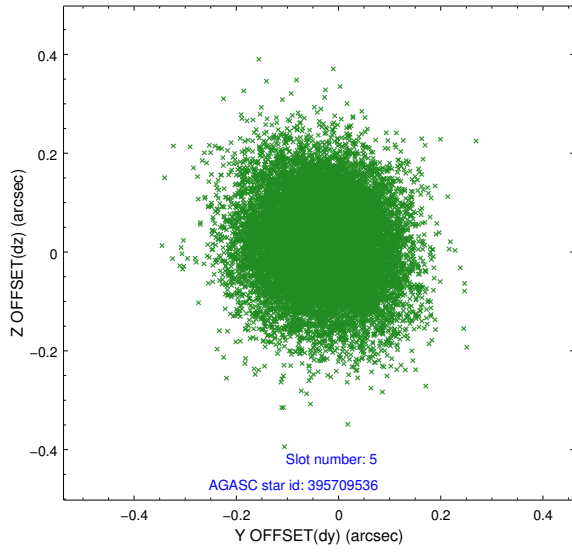
2.4.1 Slot 3



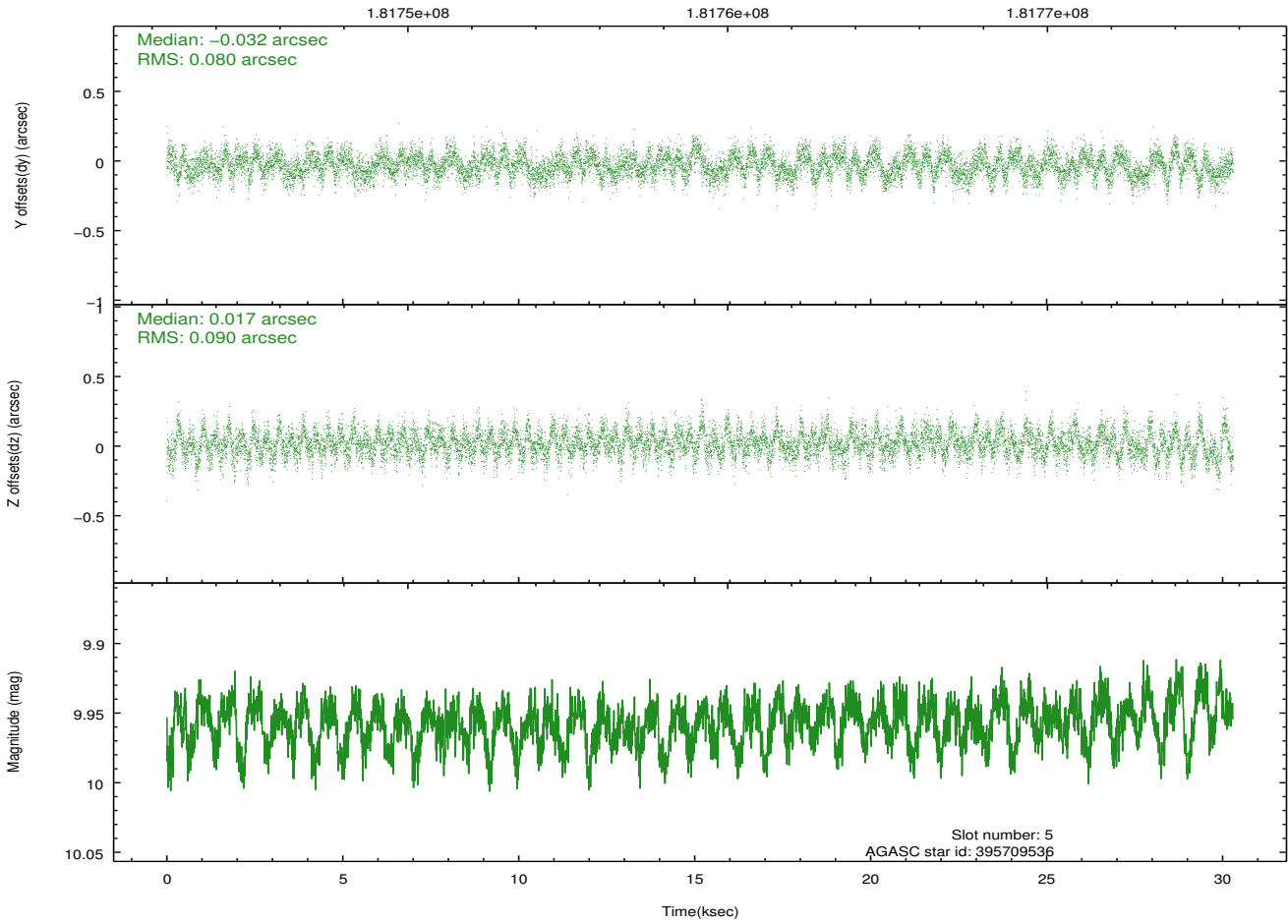
2.4.2 Slot 4



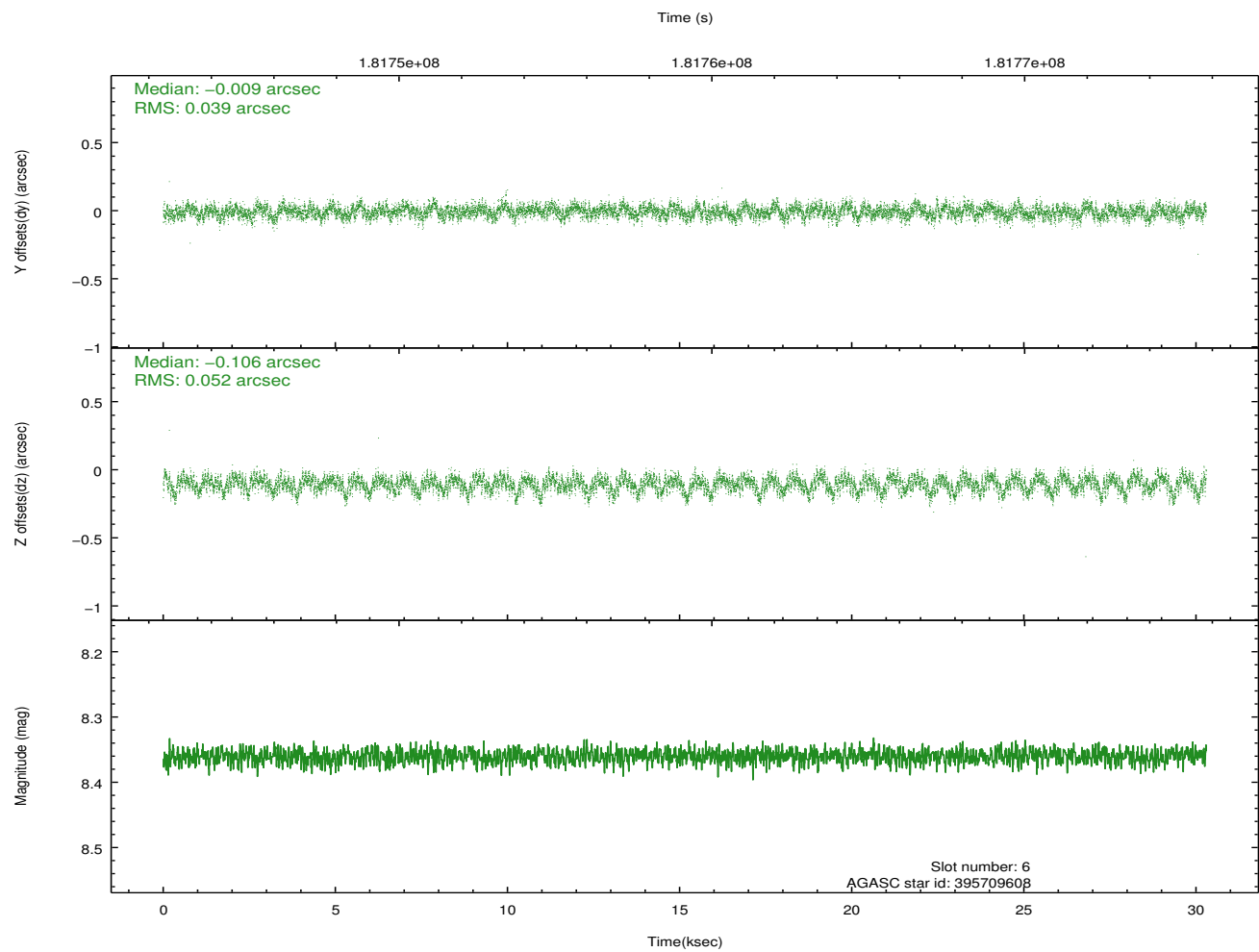
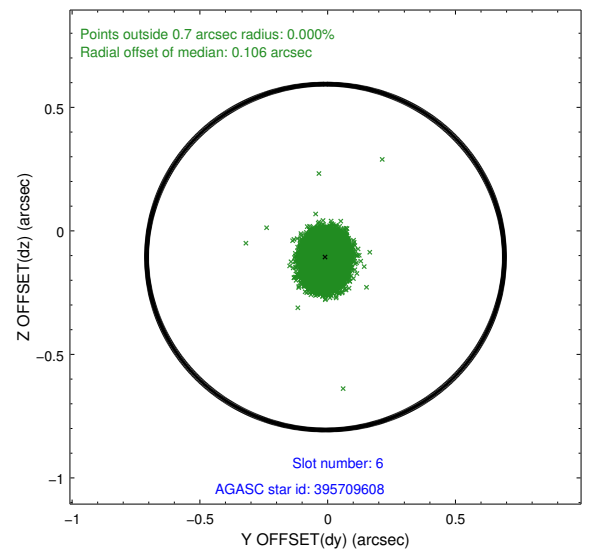
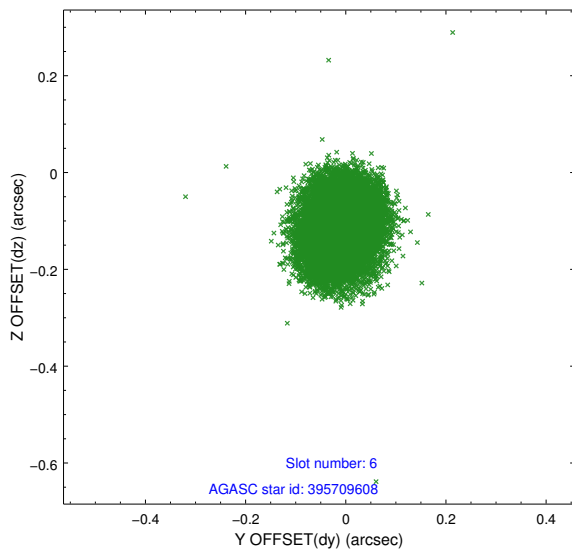
2.4.3 Slot 5



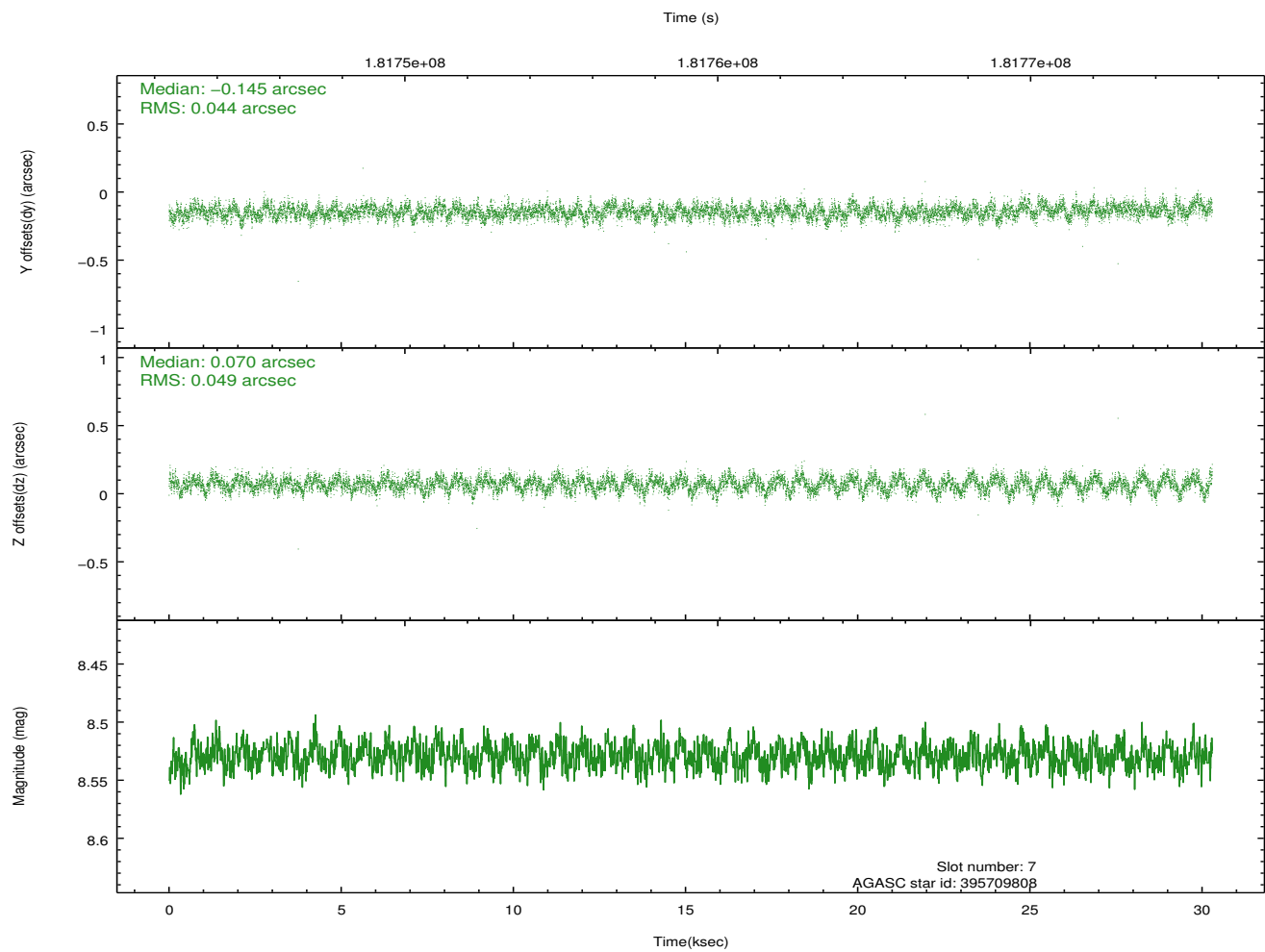
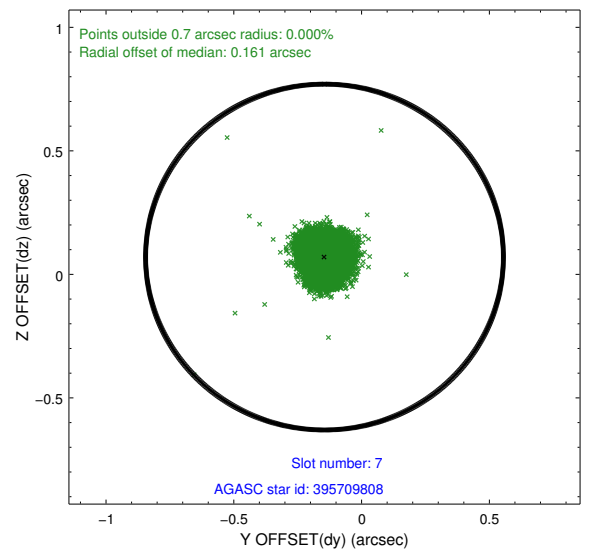
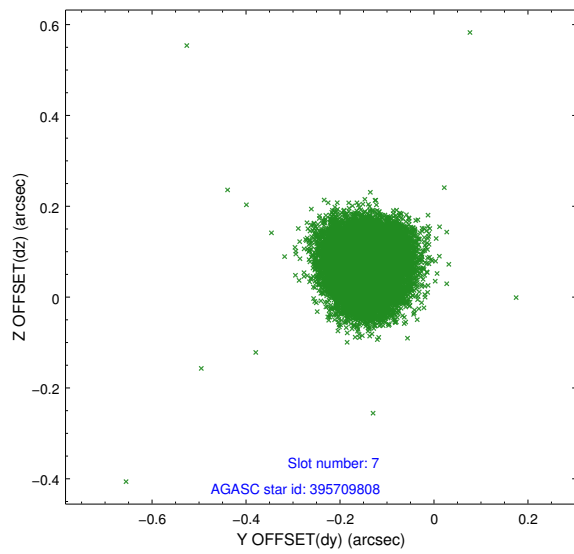
Time (s)



2.4.4 Slot 6

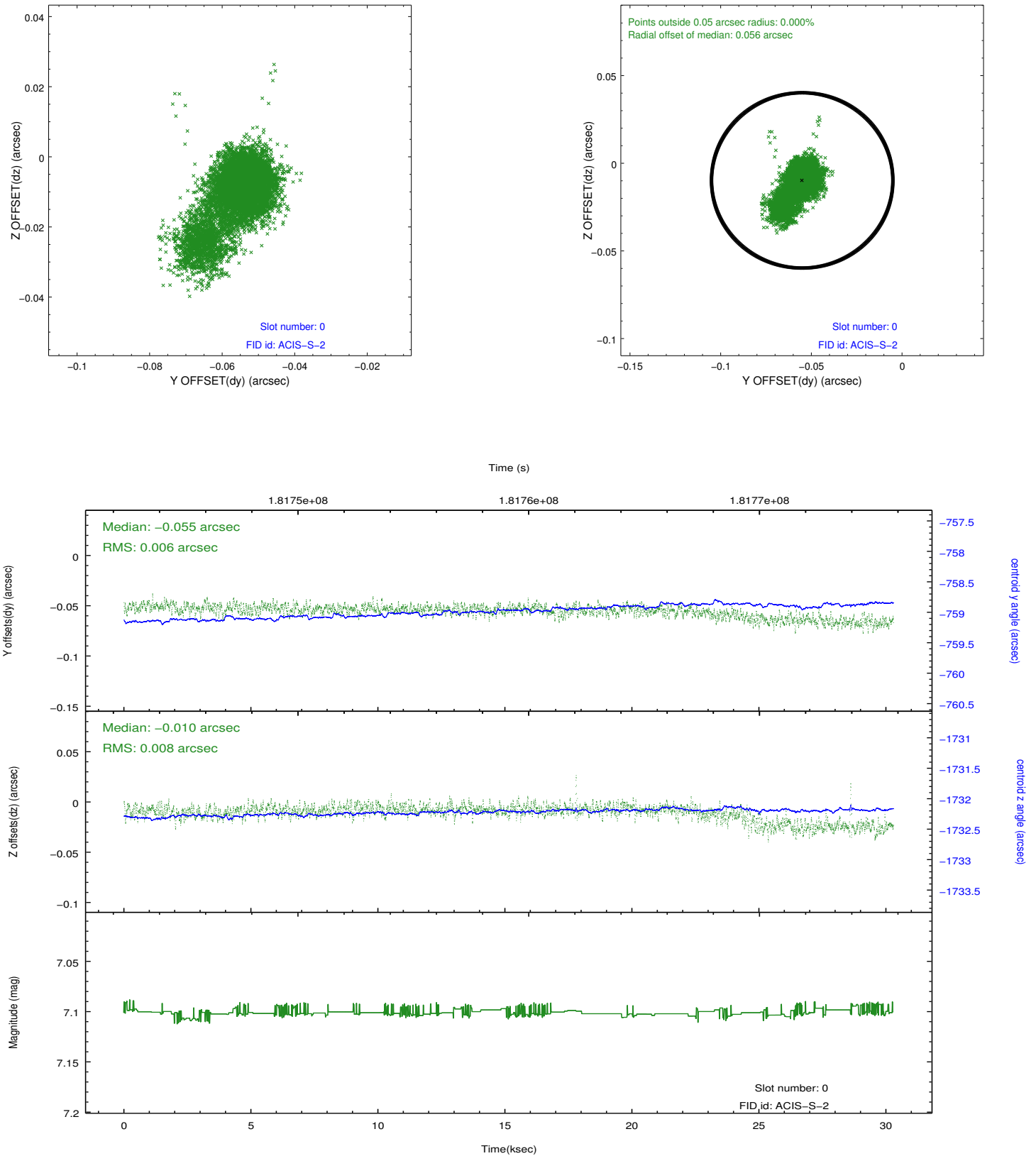


2.4.5 Slot 7

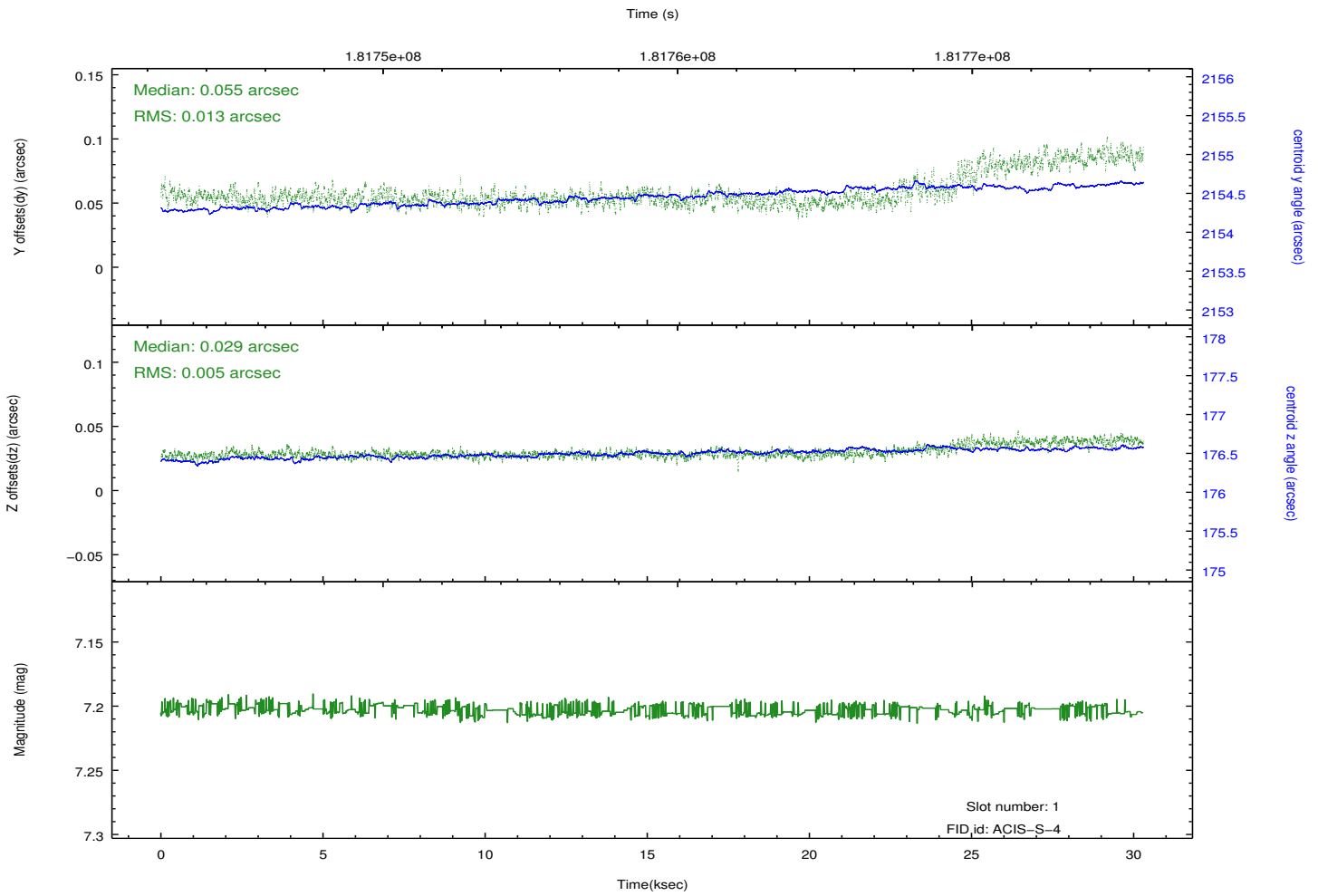
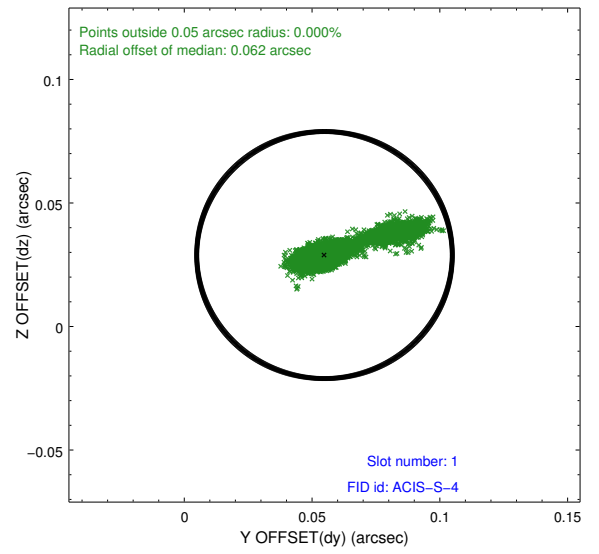
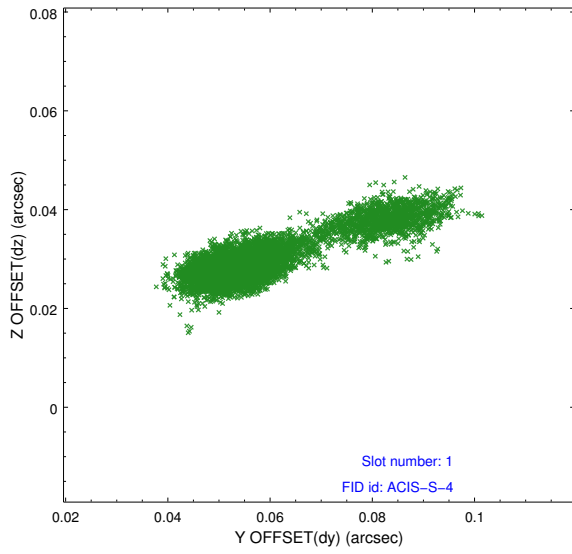


2.5 FID Slots

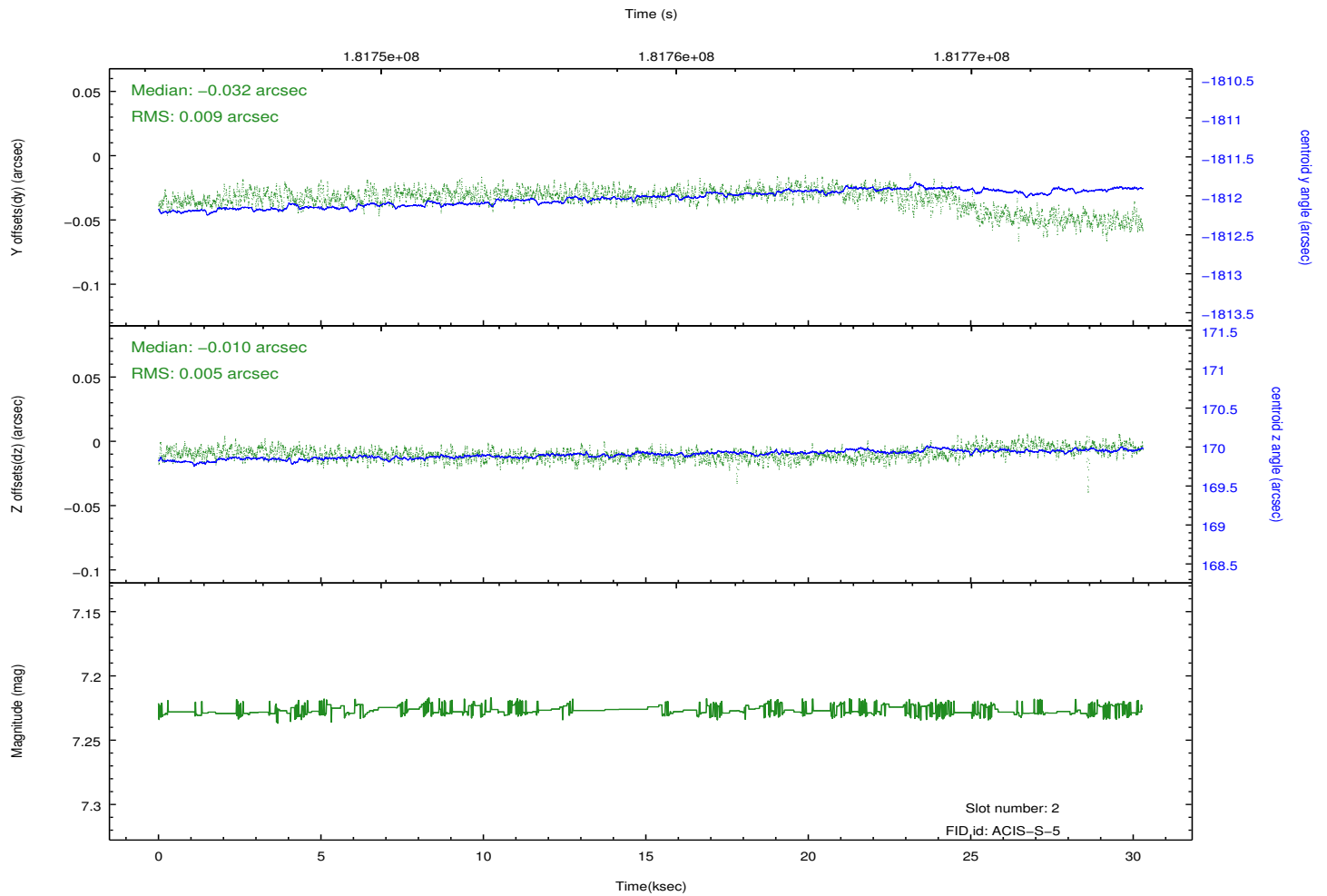
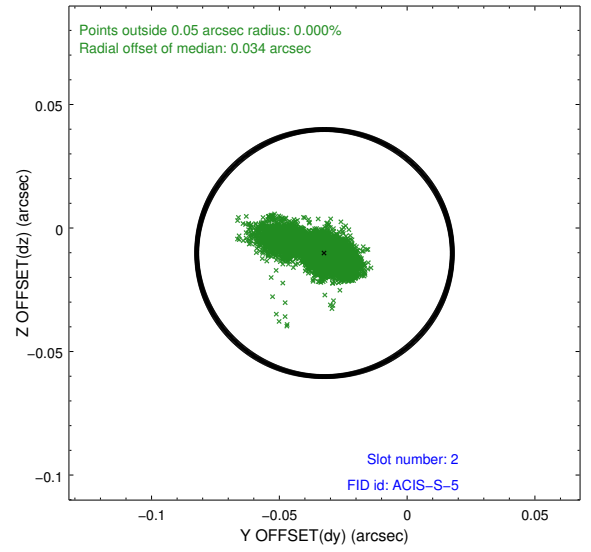
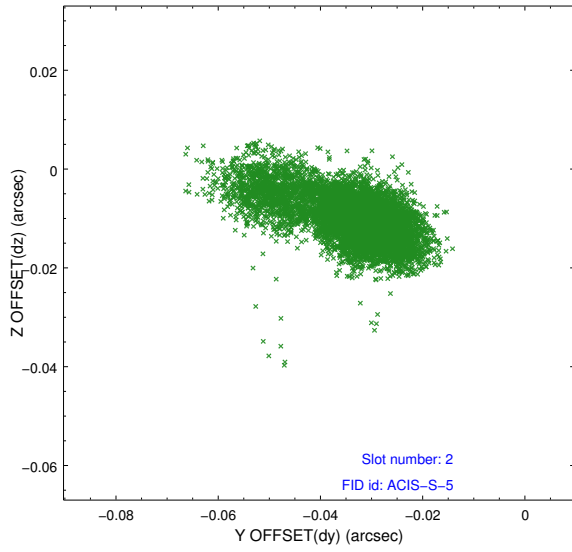
2.5.1 Slot 0



2.5.2 Slot 1



2.5.3 Slot 2



A Summary

A.1 Status

V&V Scientist	Jen Lauer
V&V Date (YYYY-MM-DD)	2012.11.30
V&V Edition	1
V&V Disposition and Status	OK
V&V Charge Time	30

A.2 Comments

Joint Proposal: XMM