

V&V Reference Report

L2 ASCDS Version : 8.4.5

Observation 4212 - L2 Version 3
Chandra X-Ray Center

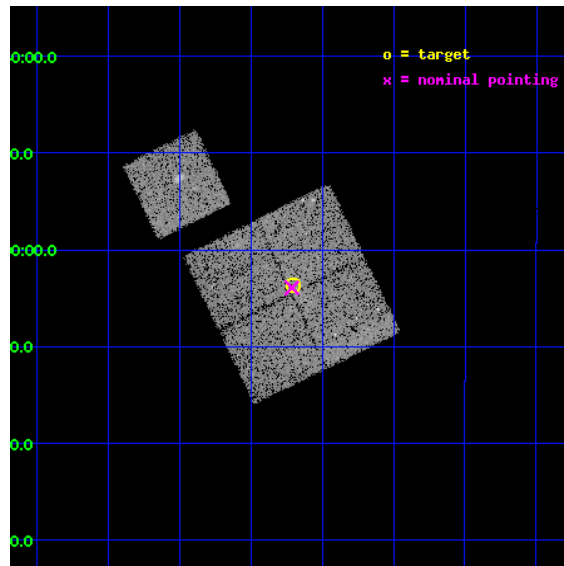
L2 Processing Date : Oct 24 2012

Contents

1	Front	2
2	OBI	3
2.1	OBI	3
2.1.1	Images	3
2.1.2	Bias	3
2.1.3	Parameters	4
2.1.4	Events	4
2.2	Compared Parameters	5
2.3	Aspect	6
2.4	Star Slots	9
2.4.1	Slot 3	9
2.4.2	Slot 4	10
2.4.3	Slot 5	11
2.4.4	Slot 6	12
2.4.5	Slot 7	13
2.5	FID Slots	14
2.5.1	Slot 0	14
2.5.2	Slot 1	15
2.5.3	Slot 2	16
A	Summary	17
A.1	Status	17
A.2	Comments	17

1 Front

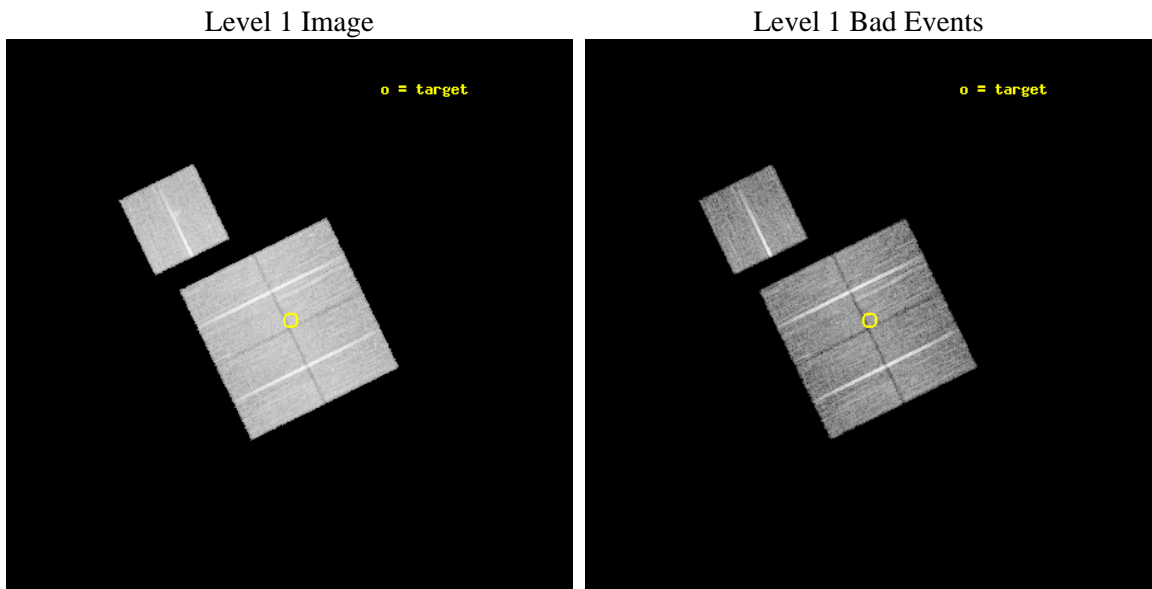
seq_num	800368	Sequence number
obs_id	4212	Observation id
title	CHANDRA OBSERVATIONS OF DLS SHEAR-SELECTED CLUSTERS	Proposal title
observer	Prof. John Hughes	Principal investigator
object	DLS J1055-0503	Source name
dtcycle	0	
cycle	P	events from which exps? Prim/Second/Both
ra_targ	163.8	Observer's specified target RA [deg]
dec_targ	-5.061944	Observer's specified target Dec [deg]
ra_nom	163.8030802524	Nominal RA [deg]
dec_nom	-5.0654316613378	Nominal Dec [deg]
roll_nom	333.99990116038	Nominal Roll [deg]
revision	3	Processing version of data
ontime	20326.658980668	Sum of GTIs [s]
livetime	20061.076216817	Livetime [s]
ontime0	20329.799960881	Sum of GTIs [s]
ontime1	20329.799960881	Sum of GTIs [s]
ontime2	20323.518020362	Sum of GTIs [s]
ontime3	20326.658980668	Sum of GTIs [s]
ontime6	20326.65896073	Sum of GTIs [s]
l2events	46299	Number of level 2 events



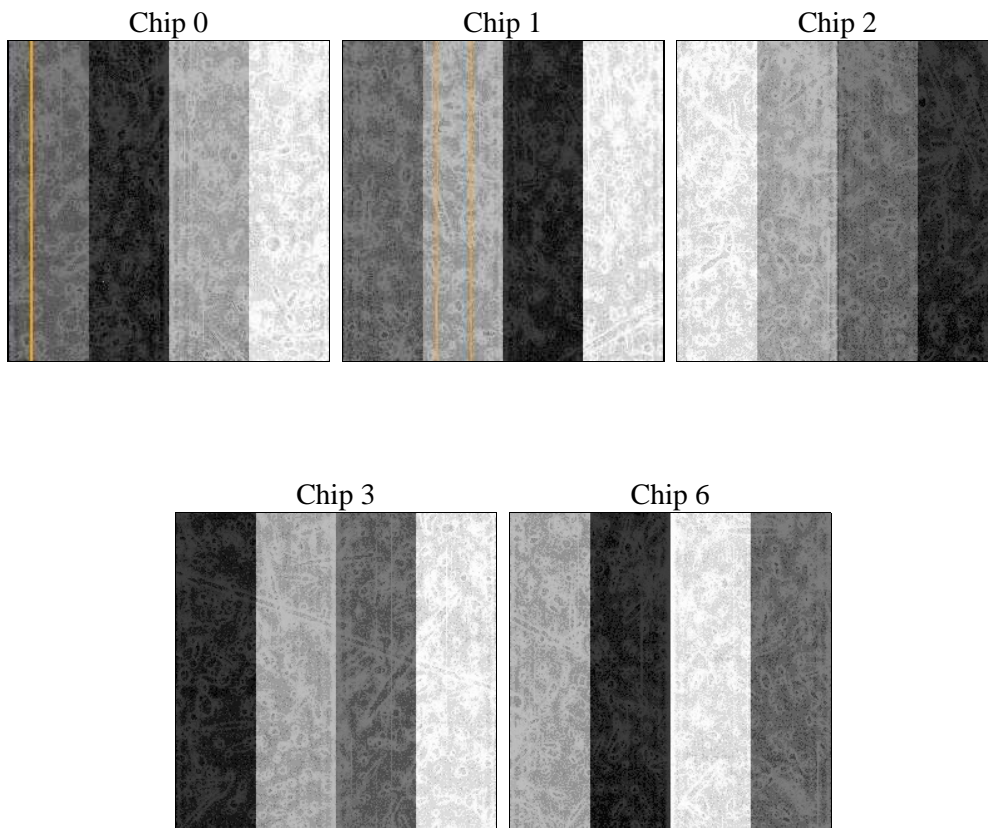
2 OBI

2.1 OBI

2.1.1 Images



2.1.2 Bias



2.1.3 Parameters

obi_num	0	Obi number	sched_exp_time	20150.000000	[s] Scheduled observation exposure time
ascdsver	8.4.5	Processing system revision	ontime	20326.658980668	Sum of GTIs [s]
caldbver	4.5.2	 	ontime0	20329.799960881	Sum of GTIs [s]
date	2012-10-24T13:37:10	Date and time of file creation	ontime1	20329.799960881	Sum of GTIs [s]
revision	3	Processing version of data	ontime2	20323.518020362	Sum of GTIs [s]
			ontime3	20326.658980668	Sum of GTIs [s]
			ontime6	20326.65896073	Sum of GTIs [s]
			l1events	560871	Number of level 1 events

2.1.4 Events

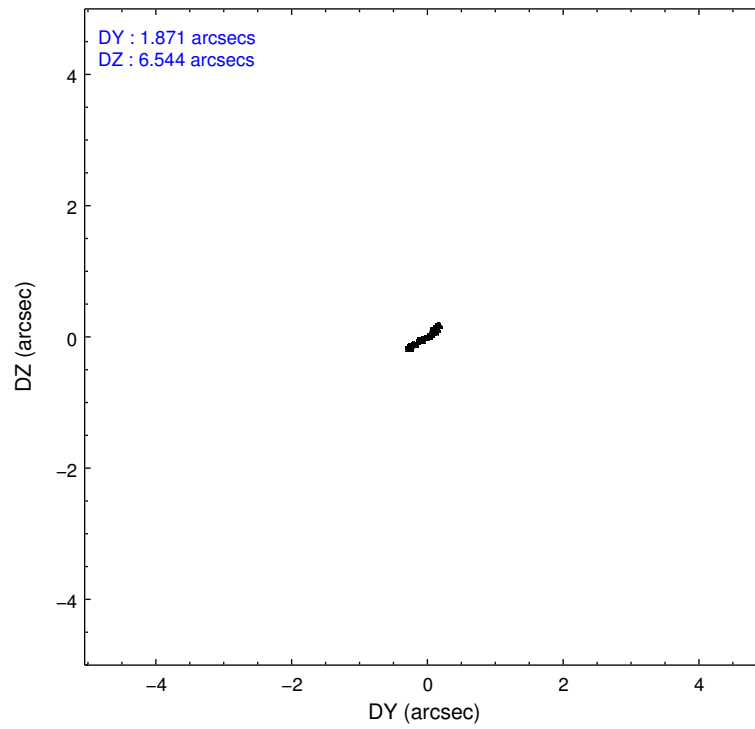
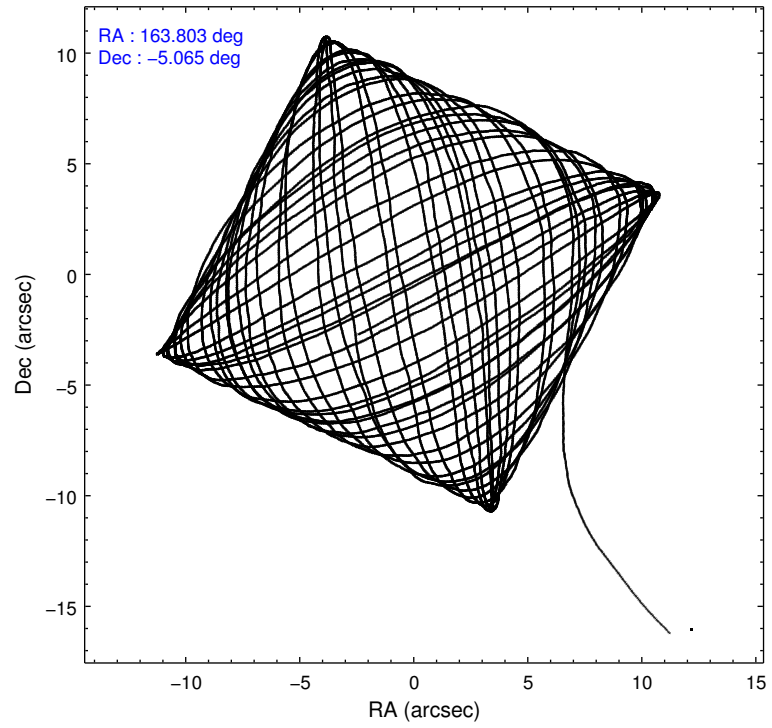
	ccd 0	ccd 1	ccd 2	ccd 3	ccd 6
level 1 events	108807	106547	117262	115234	113021
rejected events	98131	93857	106769	104676	101446
rejected %	90%	88%	91%	90%	89%

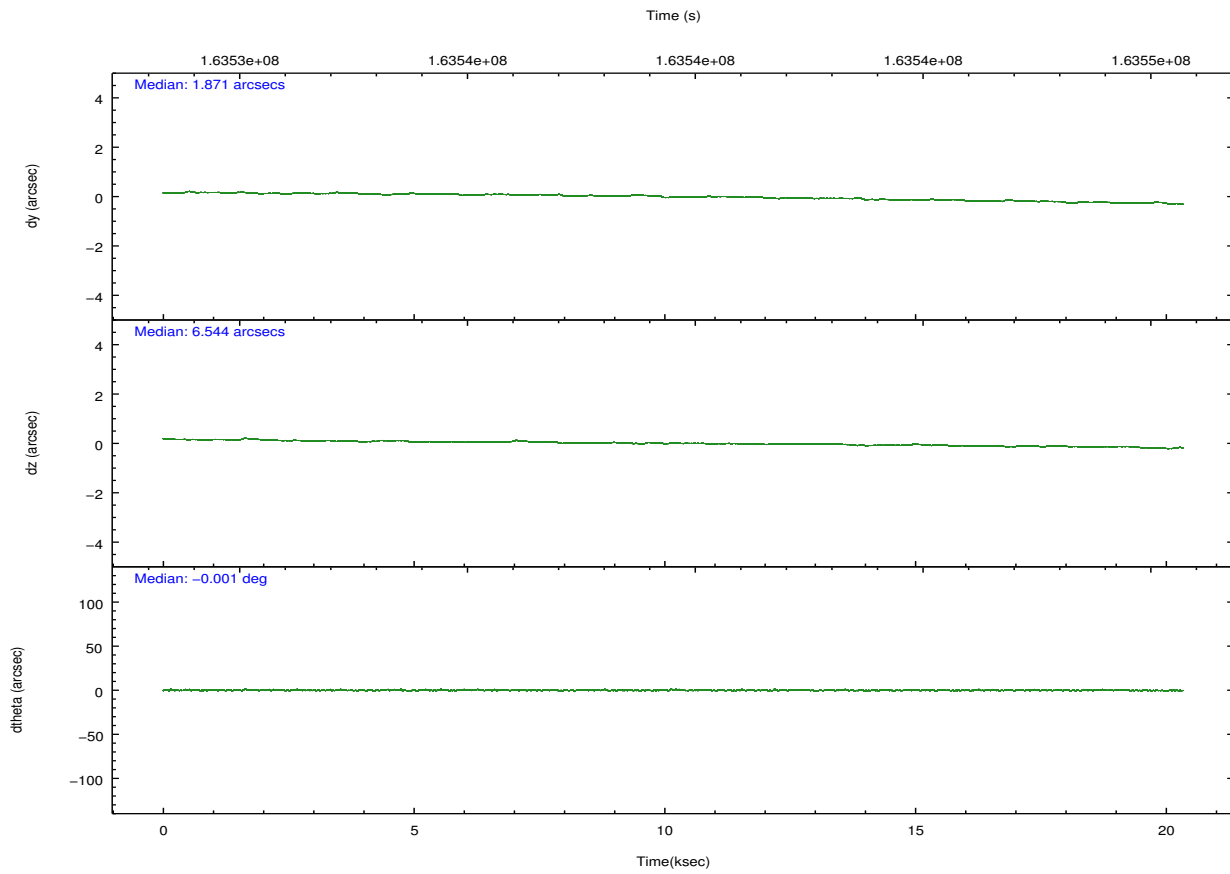
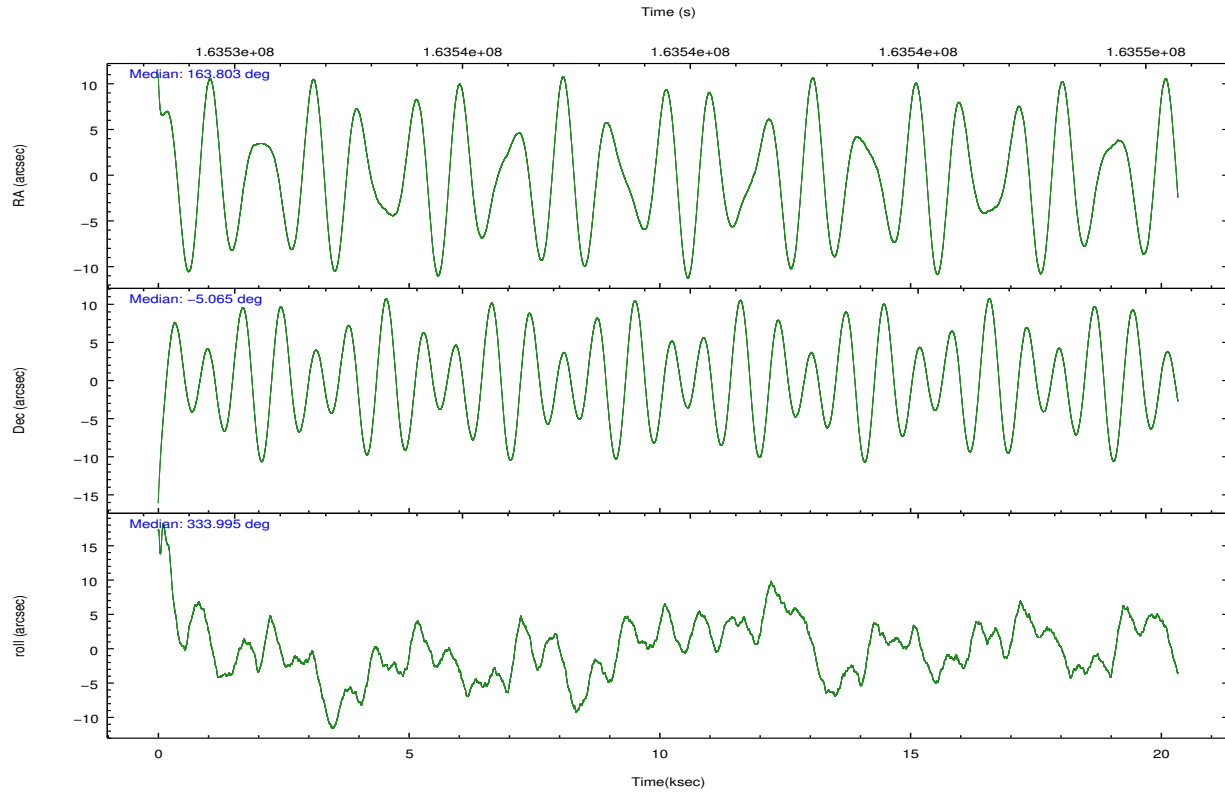
	ccd 0	ccd 1	ccd 2	ccd 3	ccd 6
grade 0 events	3700	4974	3875	3914	4351
	3%	4%	3%	3%	3%
grade 1 events	44	70	61	52	57
	0%	0%	0%	0%	0%
grade 2 events	2527	2637	2358	2214	2448
	2%	2%	2%	1%	2%
grade 3 events	1338	1457	1261	1314	1308
	1%	1%	1%	1%	1%
grade 4 events	1220	1405	1212	1296	1321
	1%	1%	1%	1%	1%
grade 5 events	3828	4079	3703	4267	4285
	3%	3%	3%	3%	3%
grade 6 events	2158	2522	2060	2092	2433
	1%	2%	1%	1%	2%
grade 7 events	93992	89403	102732	100085	96818
	86%	83%	87%	86%	85%

2.2 Compared Parameters

Parameter	Planned	Actual	Parameter	Planned	Actual
Instrument	ACIS	ACIS	Obspar format version number	7	7
Detector	ACIS-01236	ACIS-01236	Obspar file type	PREDICTED	ACTUAL
Grating	NONE	NONE	Obspar update status	NONE	UPDATED
Data mode	VFAINT	VFAINT	Number of optional ACIS chips dropped	0	0
Observation mode	POINTING	POINTING	On-chip summing requested	N	N
[deg] Pointing RA	163.775638	163.8030802523981	Subarray requested	NONE	NONE
[deg] Pointing Dec	-5.067464	-5.065431661337804	Alternating exposures requested	N	N
[deg] Pointing Roll	333.788790	333.9999011603839	[s] Primary exposure time	0.000000	3.1
[mm] SIM focus pos	-0.782348	-0.7809083437167272			
[mm] SIM defocus	0	0.001439871863259334			
[mm] SIM translation stage pos	-233.592463	-233.5874344608287			
[mm] SIM translation stage offset	0	-0.005018542100998502			
[s] Observation start time (MET)	163529524.184000	163528286.18397			
Observation start date	2003-03-08T16:51:00	2003-03-08T16:31:26			
[s] Observation end time (MET)	163549674.184000	163551025.80993			
Observation end date	2003-03-08T22:26:50	2003-03-08T22:50:25			
Read mode	TIMED	TIMED			

2.3 Aspect



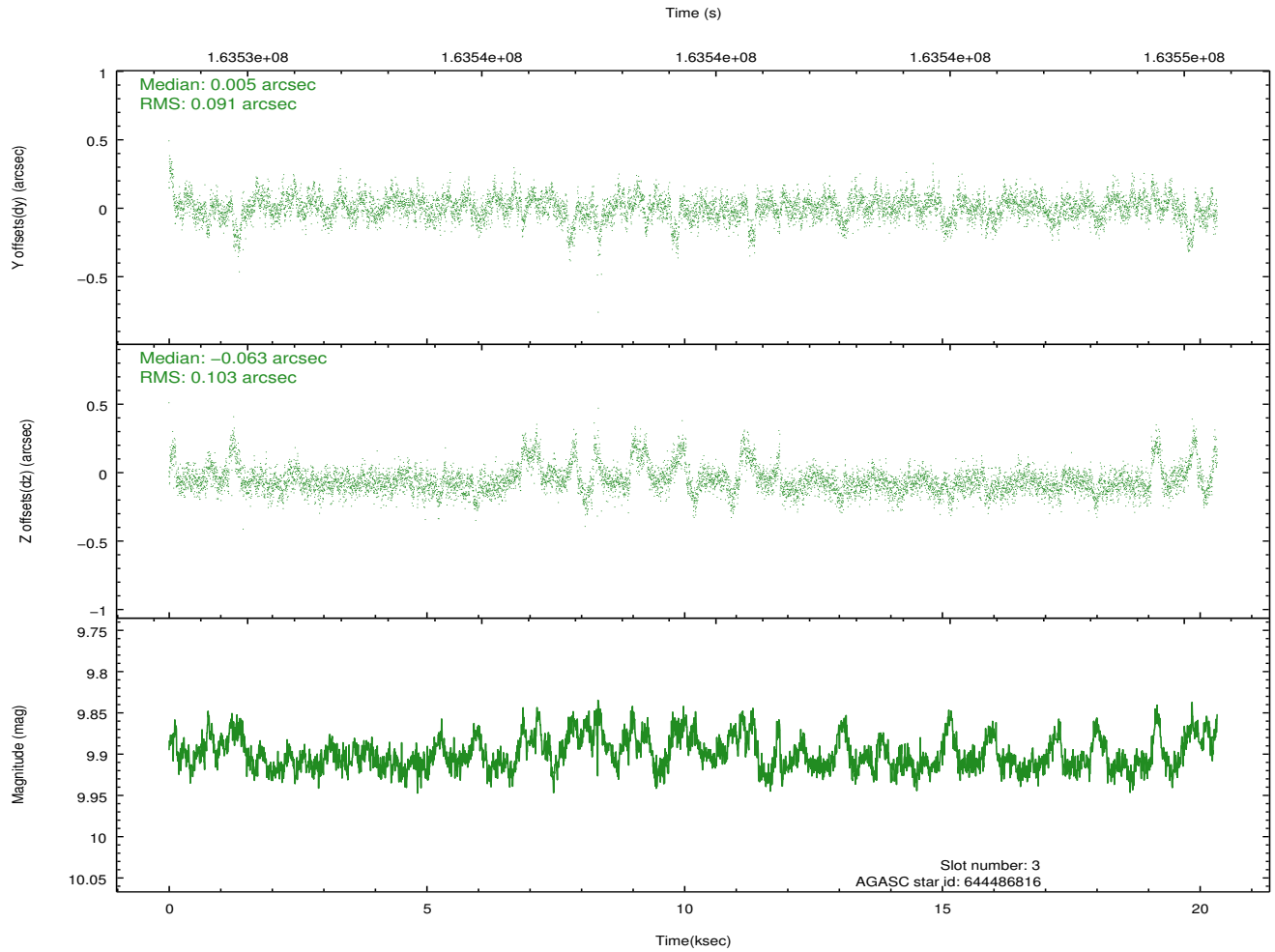
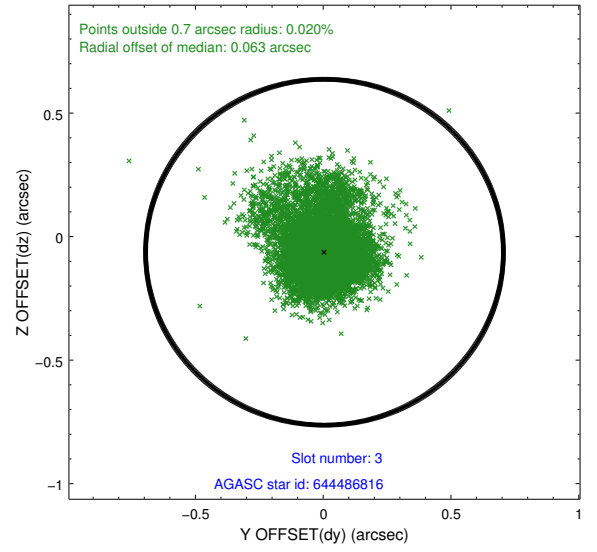
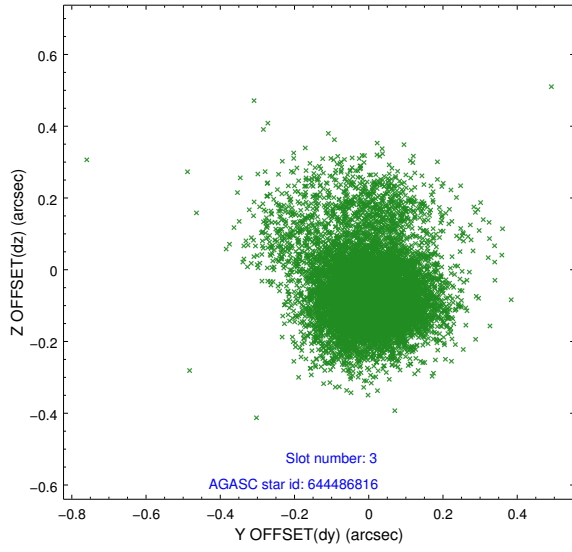


Slot Statistics

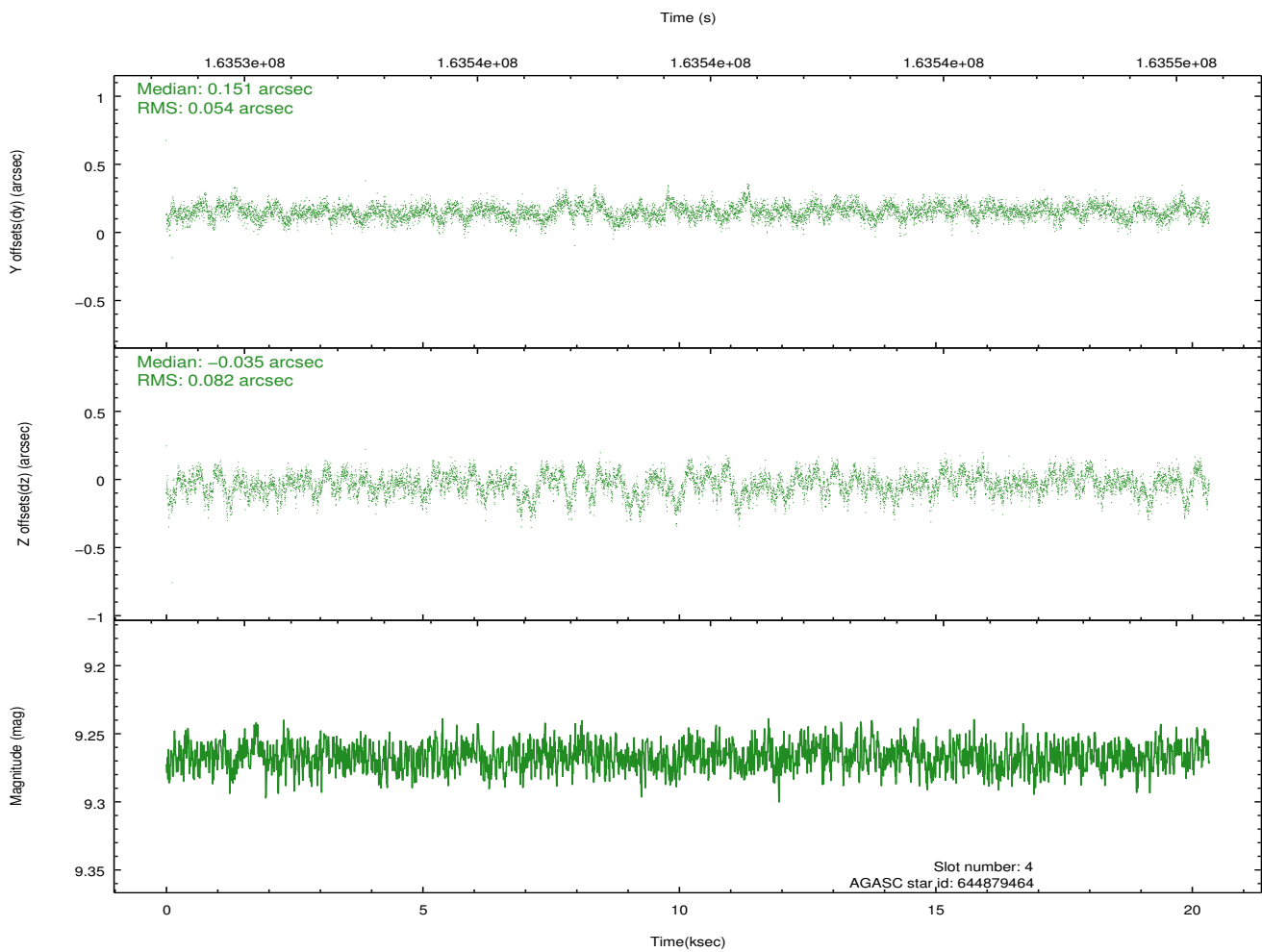
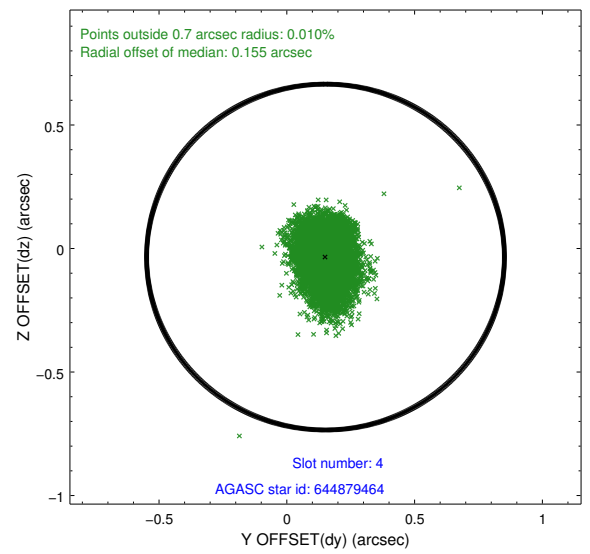
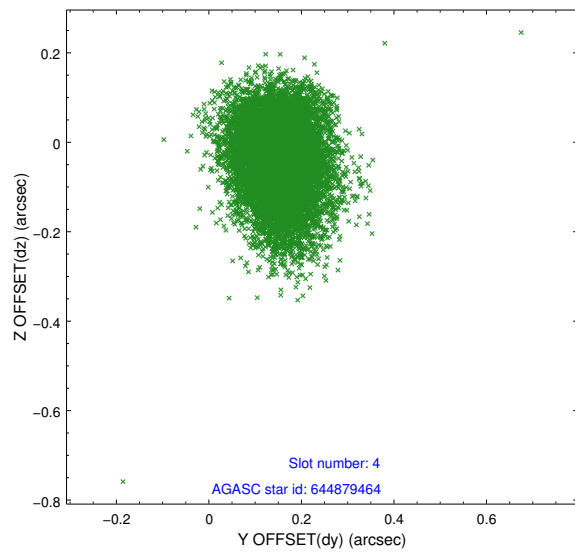
slot	status	id	mag	n_pts	med_dy	med_dz	dr1	dr2	ra	dec	mean_y	mean_z
0	FID	ACIS-I-1	7.25	4960	0.003	0.005	0.007	0.013	0.000000	0.000000	937.96	-829.94
1	FID	ACIS-I-5	7.24	4960	-0.068	0.047	0.007	0.013	0.000000	0.000000	-1810.08	1067.55
2	FID	ACIS-I-6	7.26	4960	-0.026	0.018	0.007	0.013	0.000000	0.000000	403.33	1712.19
3	GUIDE	644486816	9.90	9915	0.005	-0.063	0.131	0.271	164.182819	-4.895311	1036.91	1200.97
4	GUIDE	644879464	9.27	9917	0.151	-0.035	0.102	0.174	163.397635	-5.401358	-683.71	-1676.95
5	GUIDE	644880304	9.31	9916	0.083	0.090	0.127	0.212	163.275517	-5.533070	-866.74	-2295.92
6	GUIDE	644885144	10.32	9915	-0.085	-0.031	0.163	0.276	164.424788	-5.211007	2316.81	563.43
7	GUIDE	644883248	9.38	9906	-0.150	0.032	0.112	0.177	163.825254	-5.853252	1409.52	-2459.07

2.4 Star Slots

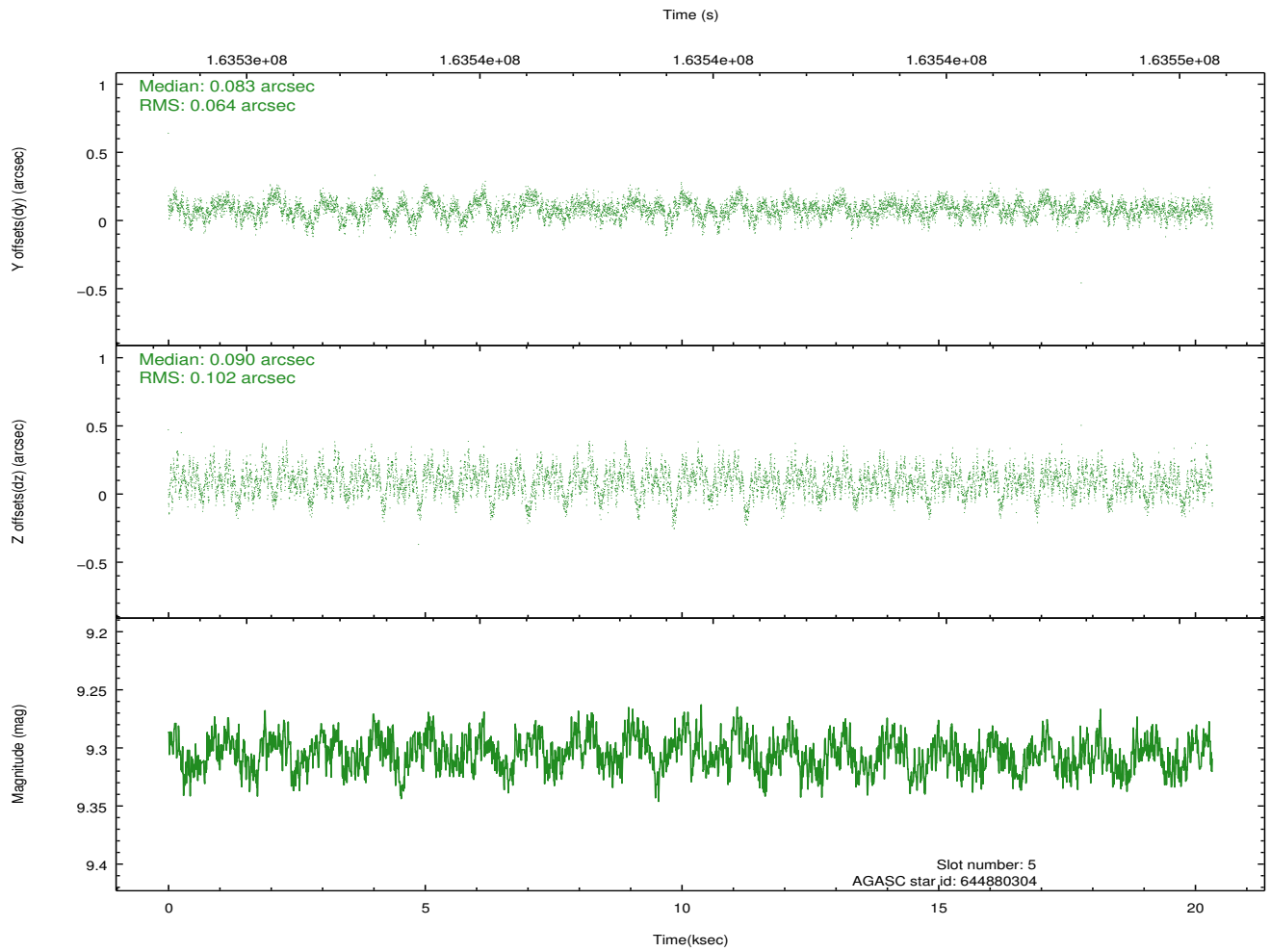
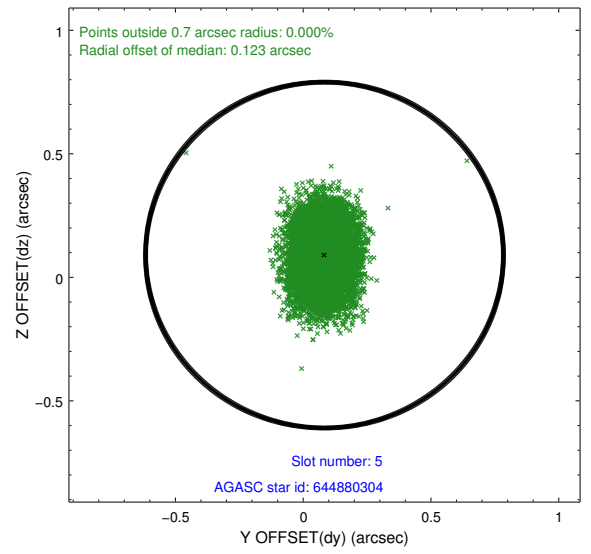
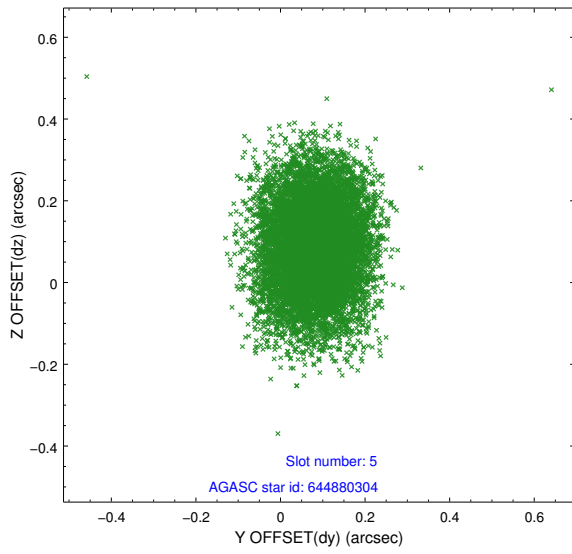
2.4.1 Slot 3



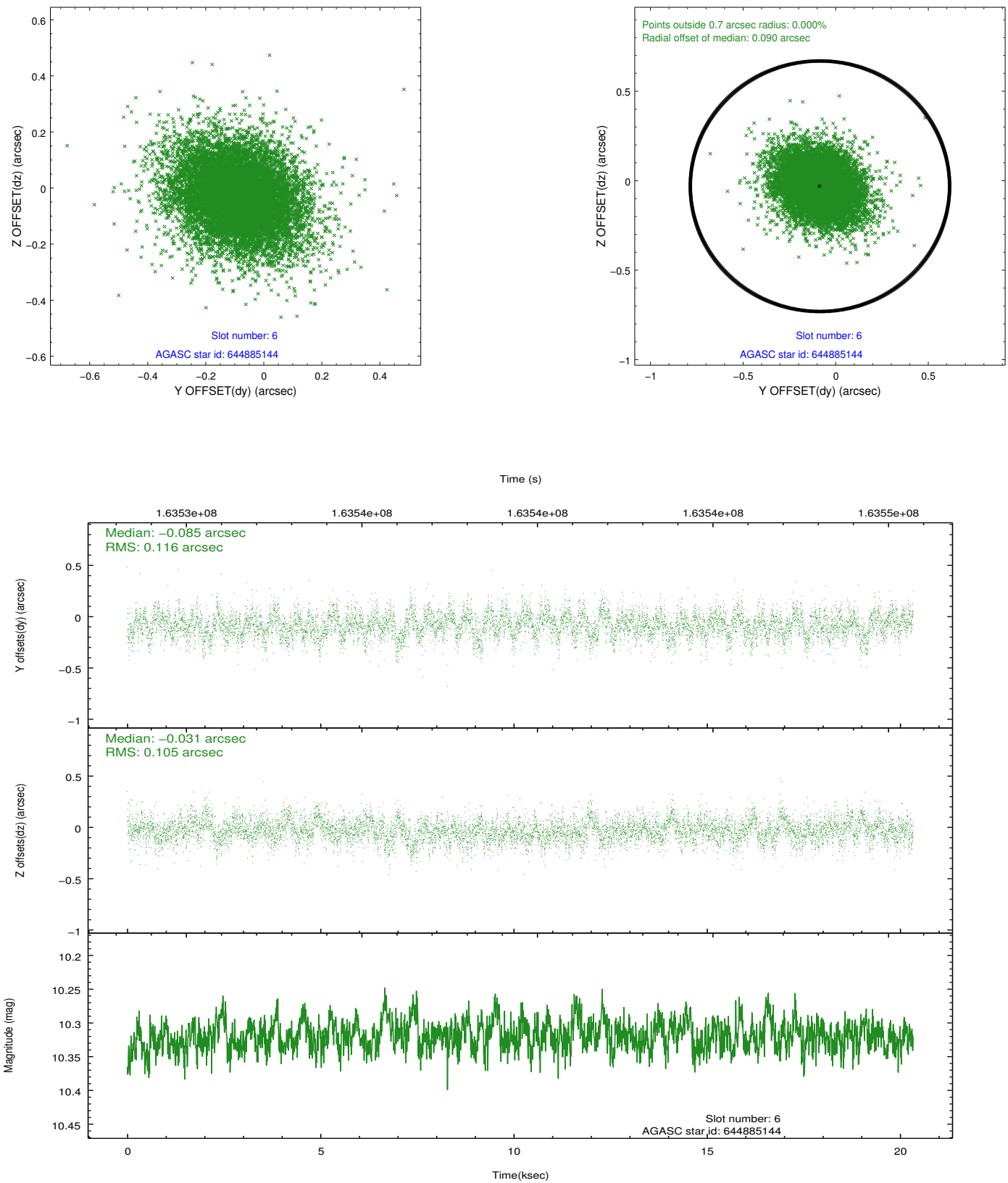
2.4.2 Slot 4



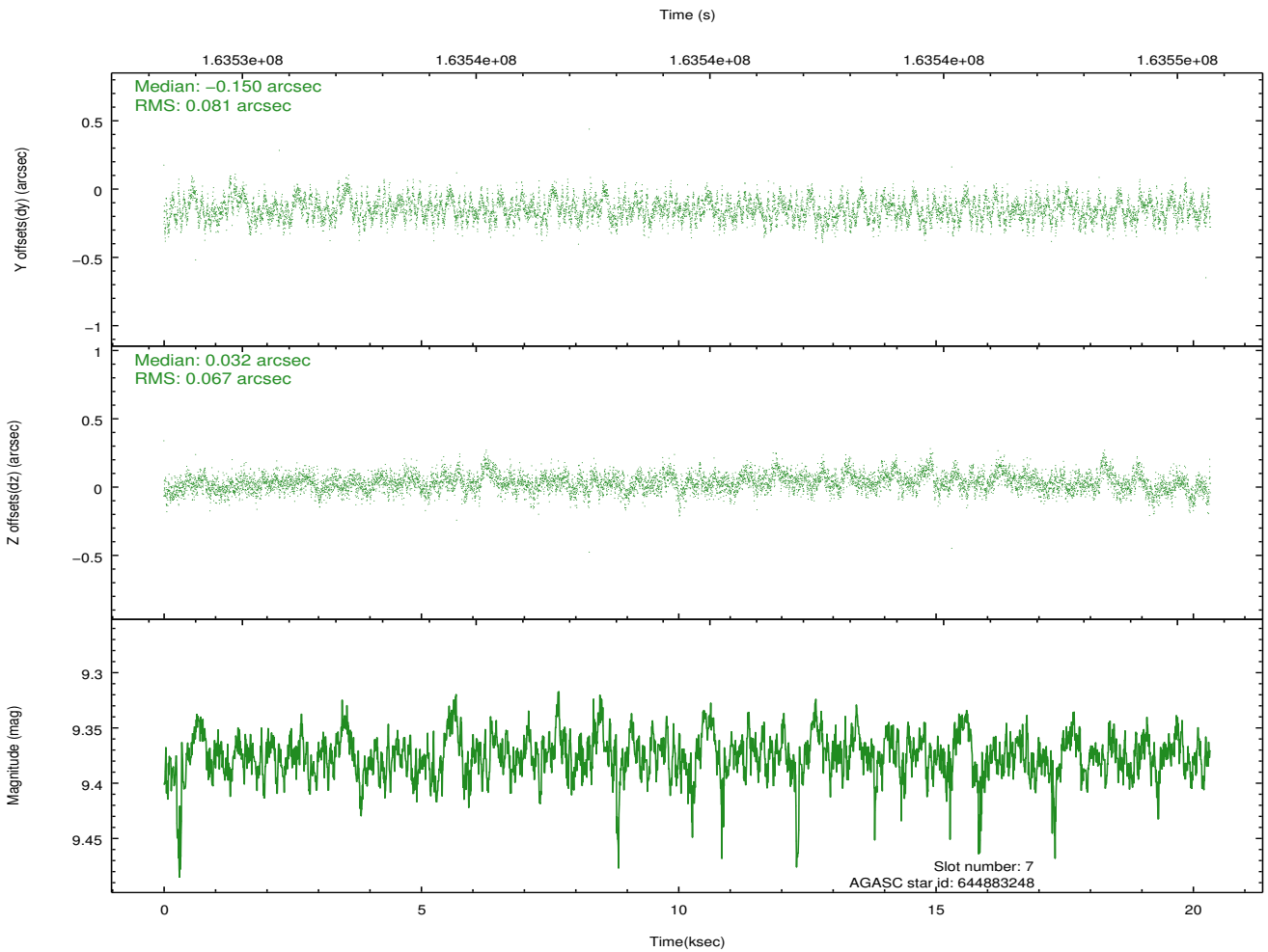
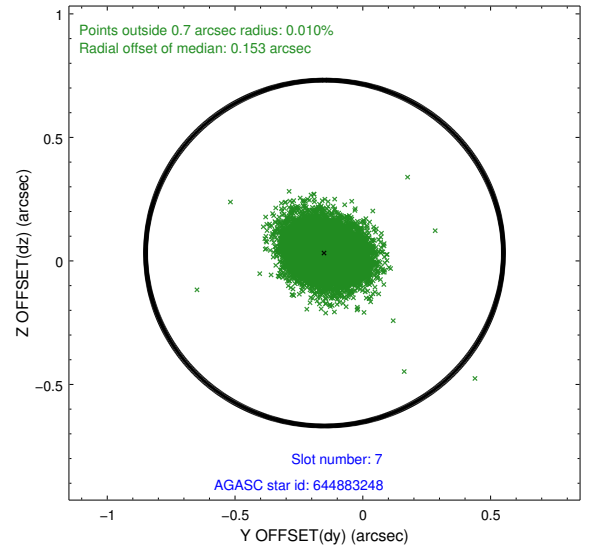
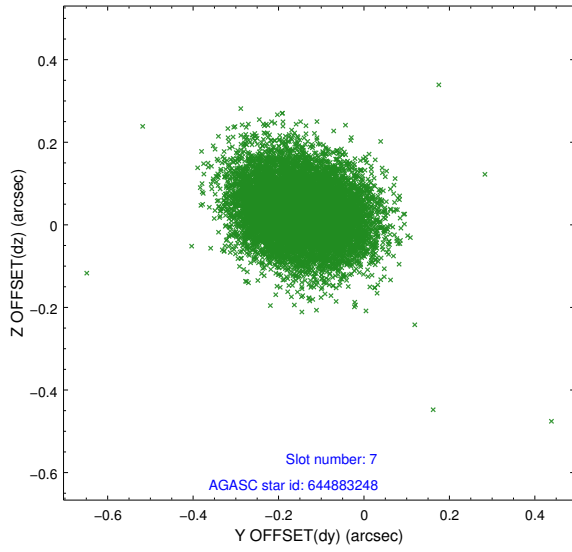
2.4.3 Slot 5



2.4.4 Slot 6

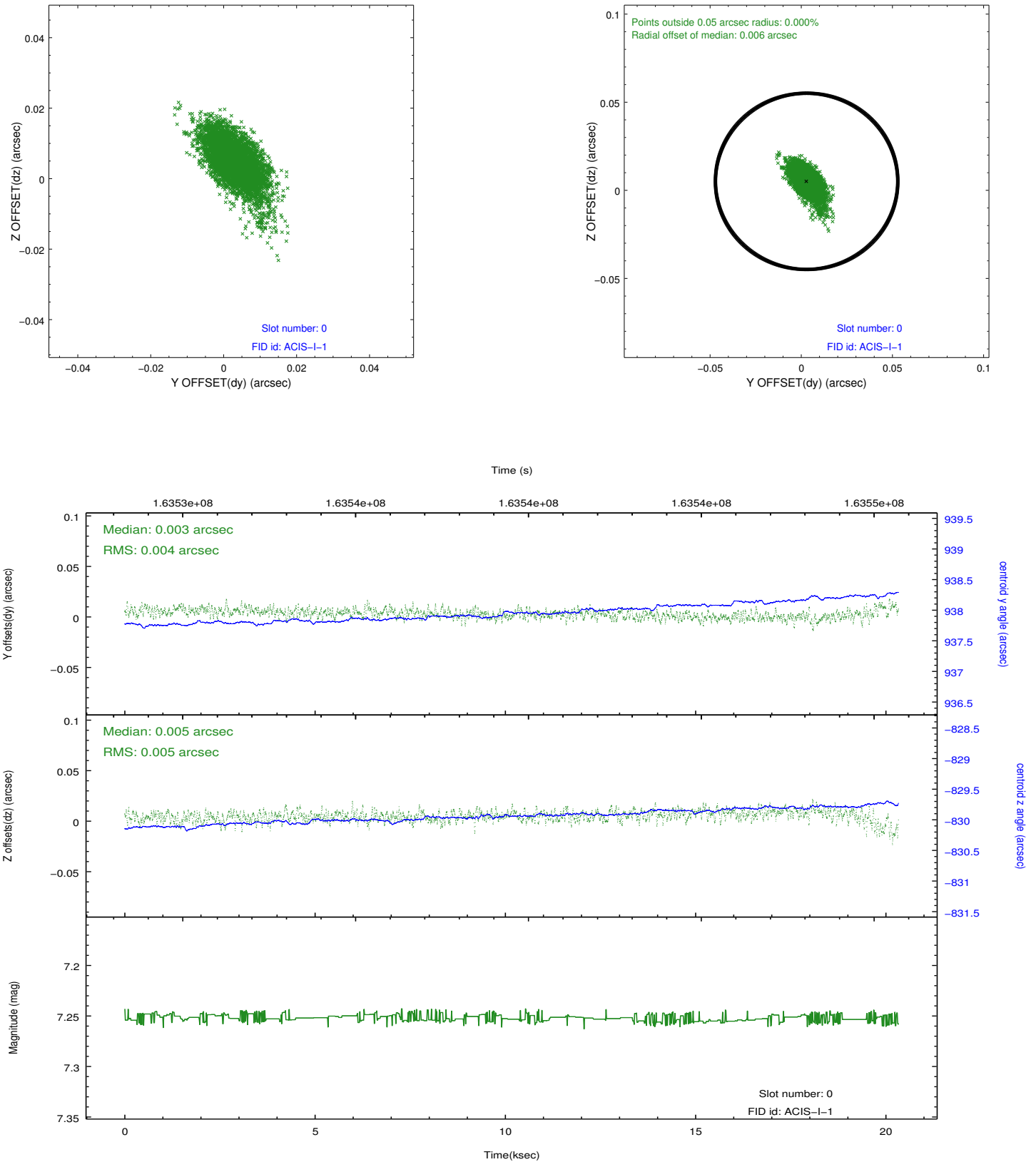


2.4.5 Slot 7

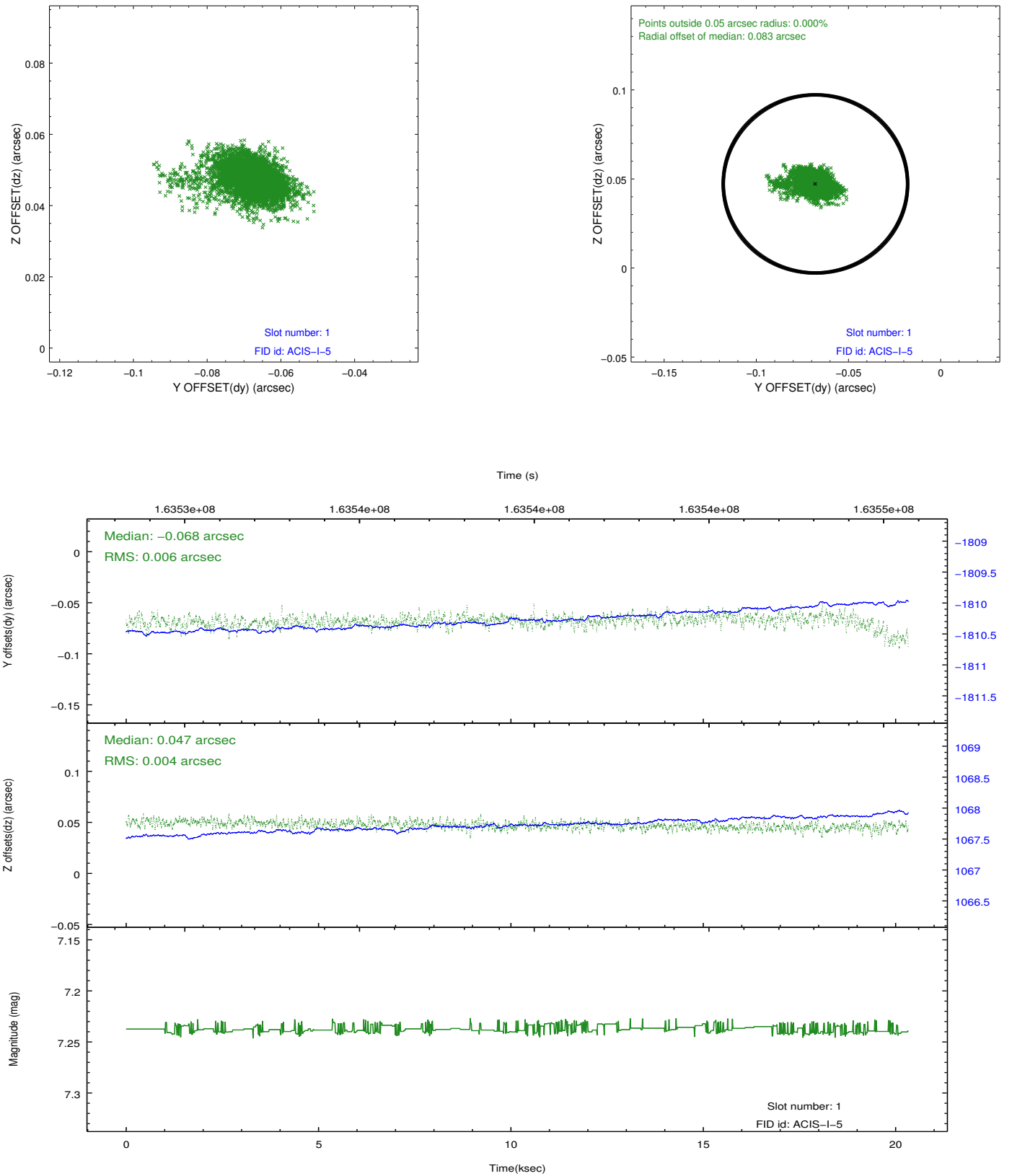


2.5 FID Slots

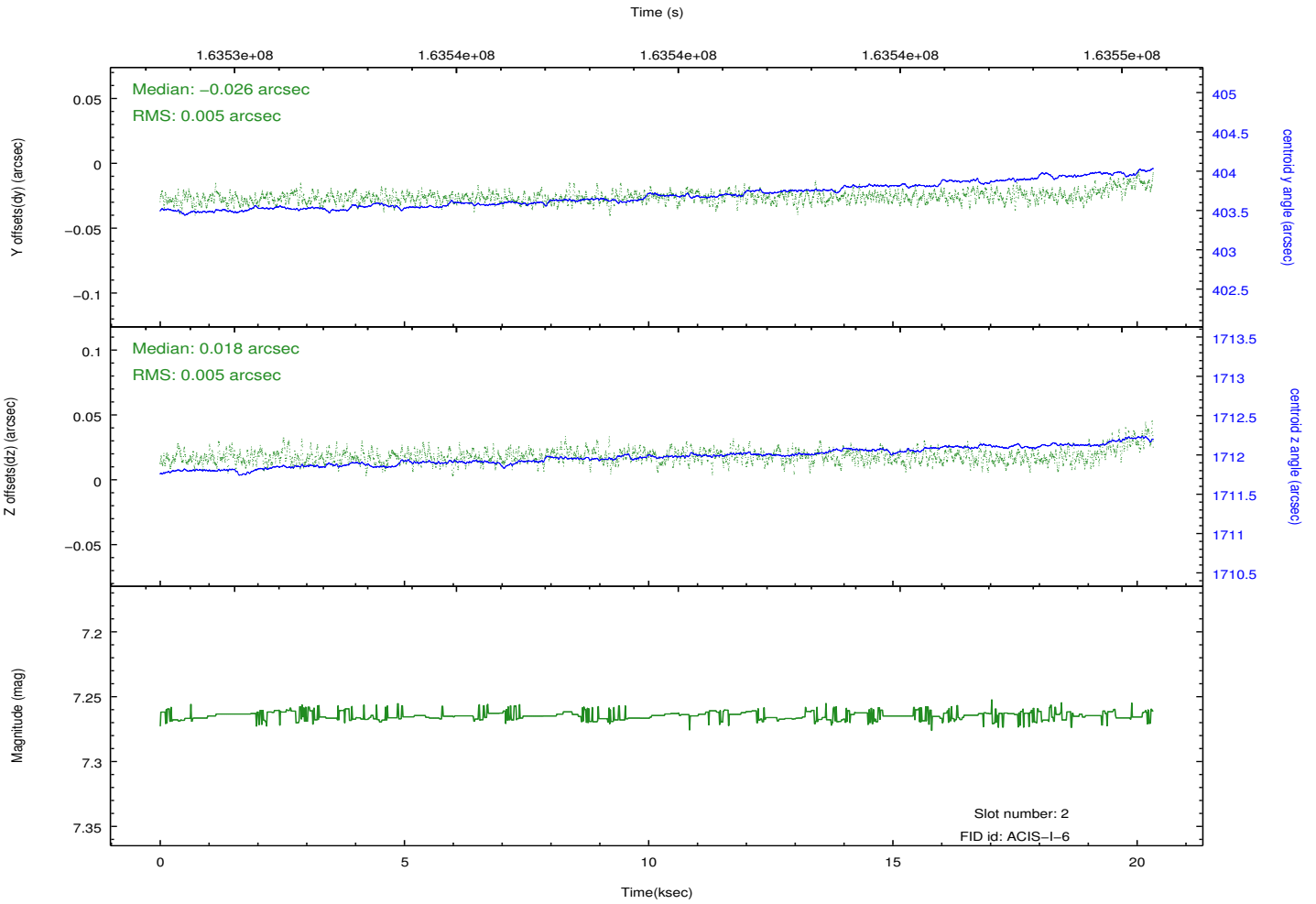
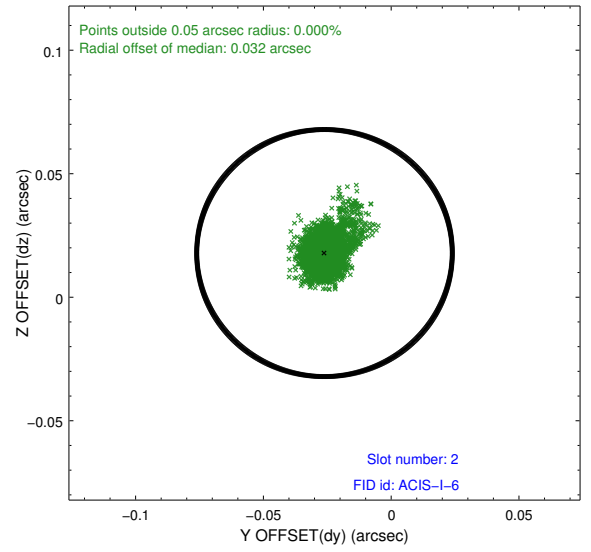
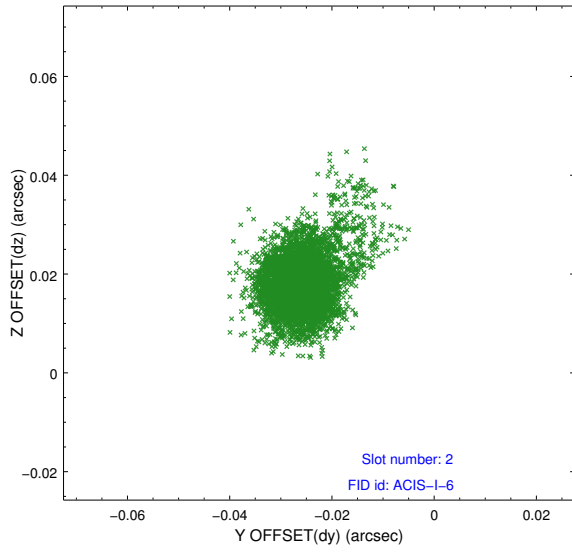
2.5.1 Slot 0



2.5.2 Slot 1



2.5.3 Slot 2



A Summary

A.1 Status

V&V Scientist	Jen Lauer
V&V Date (YYYY-MM-DD)	2012.11.08
V&V Edition	1
V&V Disposition and Status	OK
V&V Charge Time	20.326

A.2 Comments