

V&V Reference Report

L2 ASCDS Version : 8.4.5

Observation 4582 - L2 Version 3
Chandra X-Ray Center

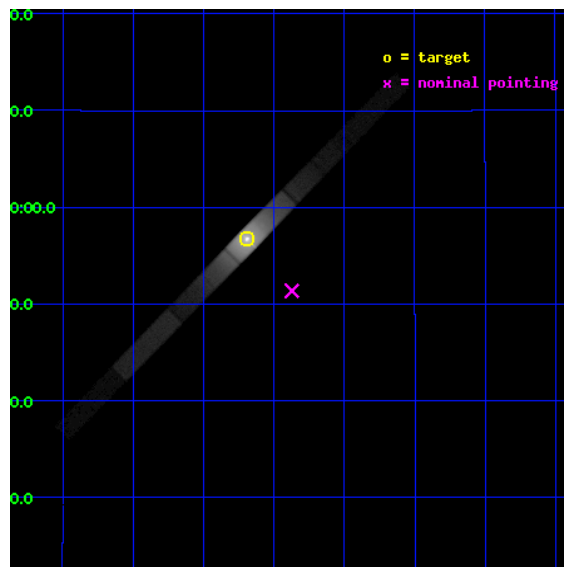
L2 Processing Date : Nov 8 2012

Contents

1	Front	2
2	OBI	3
2.1	OBI	3
2.1.1	Images	3
2.1.2	Parameters	4
2.1.3	Events	4
2.2	Compared Parameters	5
2.3	Aspect	6
2.4	Star Slots	9
2.4.1	Slot 3	9
2.4.2	Slot 4	10
2.4.3	Slot 5	11
2.4.4	Slot 6	12
2.4.5	Slot 7	13
2.5	FID Slots	14
2.5.1	Slot 0	14
2.5.2	Slot 1	15
2.5.3	Slot 2	16
A	Summary	17
A.1	Status	17
A.2	Comments	17

1 Front

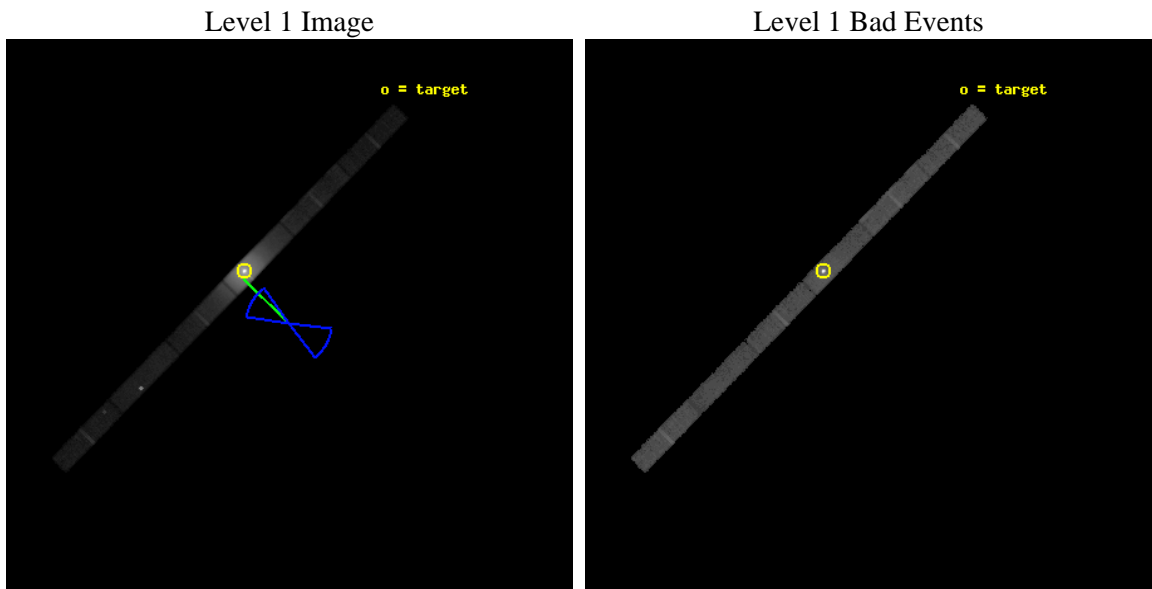
seq_num	400364	Sequence number
obs_id	4582	Observation id
title	Resolving X-ray Jets in GRS 1915+105 with Chandra	Proposal title
observer	Dr Jon Miller	Principal investigator
object	GRS 1915+105	Source name
dtycycle	0	
cycle	P	events from which exps? Prim/Second/Both
ra_targ	288.797917	Observer's specified target RA [deg]
dec_targ	10.945556	Observer's specified target Dec [deg]
ra_nom	288.71824833479	Nominal RA [deg]
dec_nom	10.856267878808	Nominal Dec [deg]
roll_nom	314.33047451387	Nominal Roll [deg]
revision	3	Processing version of data
ontime	30061.899837077	Sum of GTIs [s]
livetime	28980.65783915	Livetime [s]
ontime4	30061.899837077	Sum of GTIs [s]
ontime5	30061.899837077	Sum of GTIs [s]
ontime6	30061.899837077	Sum of GTIs [s]
ontime7	30061.899837077	Sum of GTIs [s]
ontime8	30061.899837077	Sum of GTIs [s]
ontime9	30061.899837077	Sum of GTIs [s]
l2events	2039453	Number of level 2 events



2 OBI

2.1 OBI

2.1.1 Images



2.1.2 Parameters

obi_num	0	Obi number	sched_exp_time	30000.000000	[s] Scheduled observation exposure time
ascdsver	8.4.5	Processing system revision	ontime	30061.899837077	Sum of GTIs [s]
caldsver	4.5.2	 	ontime4	30061.899837077	Sum of GTIs [s]
date	2012-11-08T16:49:12	Date and time of file creation	ontime5	30061.899837077	Sum of GTIs [s]
revision	3	Processing version of data	ontime6	30061.899837077	Sum of GTIs [s]
			ontime7	30061.899837077	Sum of GTIs [s]
			ontime8	30061.899837077	Sum of GTIs [s]
			ontime9	30061.899837077	Sum of GTIs [s]
			l1events	3216474	Number of level 1 events

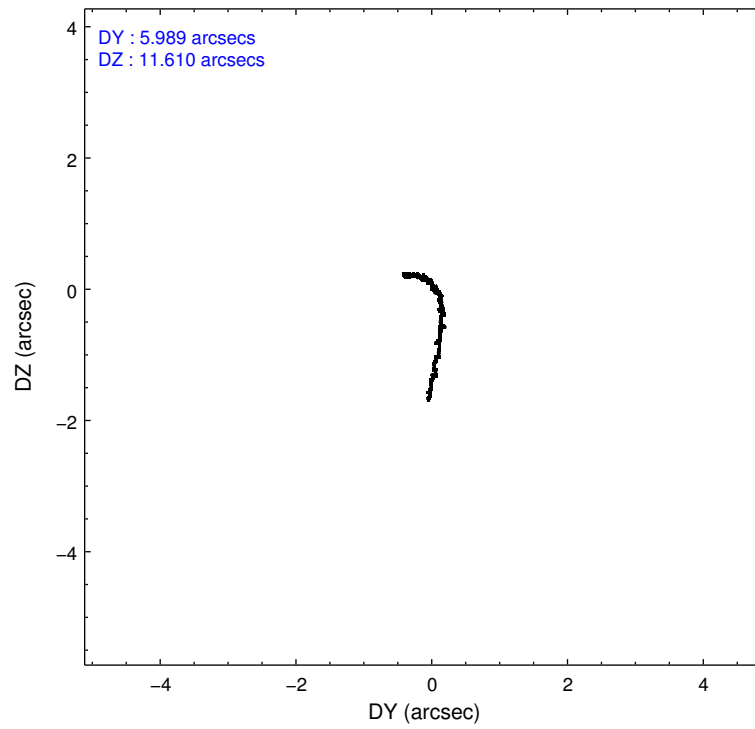
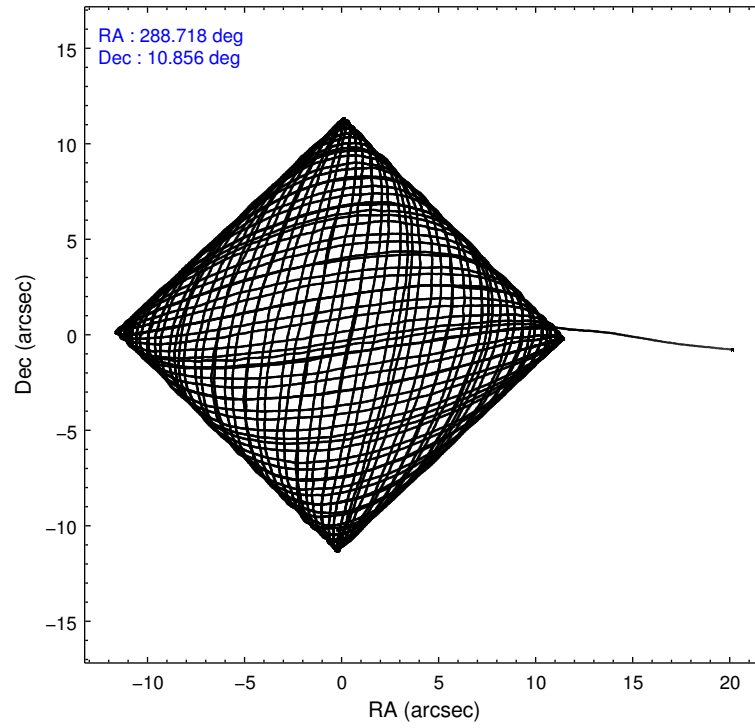
2.1.3 Events

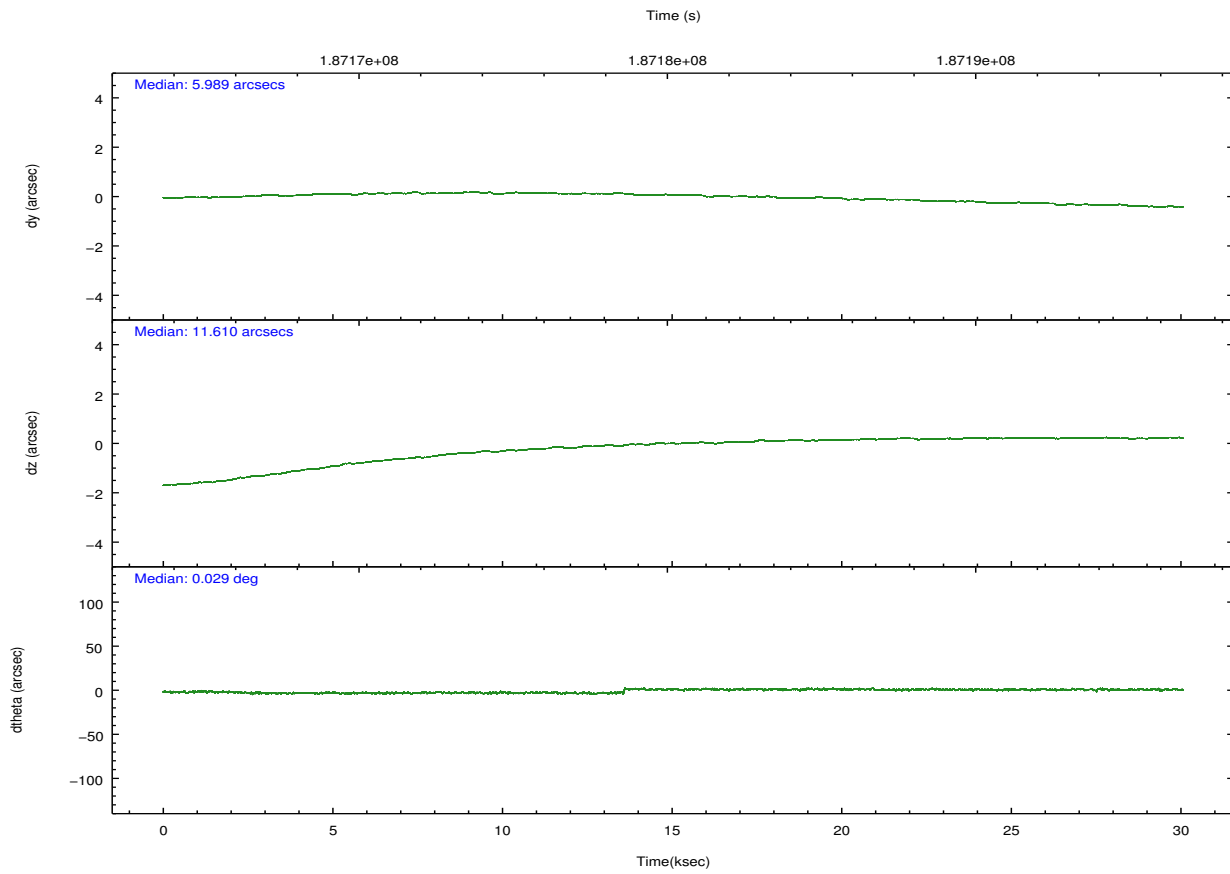
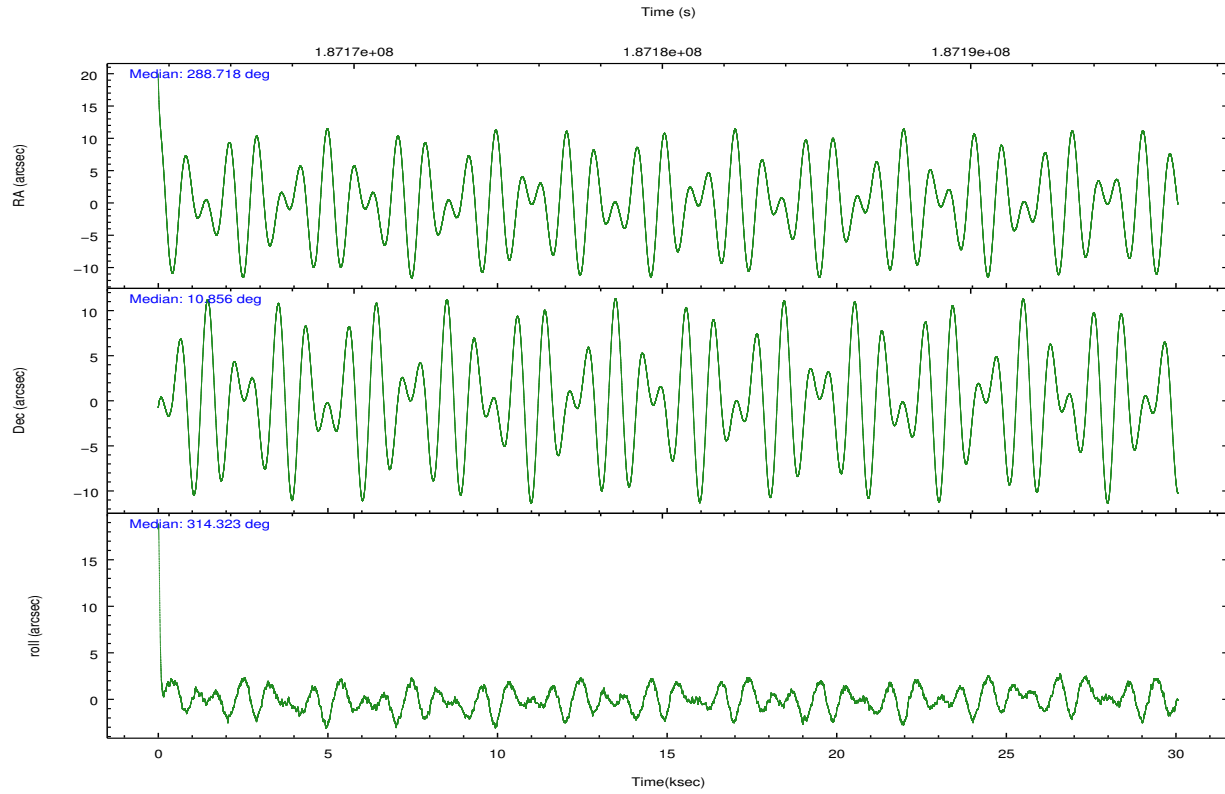
	ccd 4	ccd 5	ccd 6	ccd 7	ccd 8	ccd 9		ccd 4	ccd 5	ccd 6	ccd 7	ccd 8	ccd 9
level 1 events	68771	104284	142271	2741869	98223	61056	grade 0 events	5852	26162	65642	304080	20083	6002
rejected events	58193	44824	53911	831627	64265	50515		8%	25%	46%	11%	20%	9%
rejected %	84%	42%	37%	30%	65%	82%	grade 1 events	38	68	122	20598	44	22
								0%	0%	0%	0%	0%	0%
							grade 2 events	4216	14269	14048	505770	7178	3662
								6%	13%	9%	18%	7%	5%
							grade 3 events	963	1573	3898	187087	2576	1097
								1%	1%	2%	6%	2%	1%
							grade 4 events	859	1391	3945	179529	2539	1039
								1%	1%	2%	6%	2%	1%
							grade 5 events	1554	3793	2030	103448	2567	1979
								2%	3%	1%	3%	2%	3%
							grade 6 events	2187	20511	5179	748759	5575	2257
								3%	19%	3%	27%	5%	3%
							grade 7 events	53102	36517	47407	692598	57661	44998
								77%	35%	33%	25%	58%	73%

2.2 Compared Parameters

Parameter	Planned	Actual	Parameter	Planned	Actual
Instrument	ACIS	ACIS	Obspar format version number	7	7
Detector	ACIS-456789	ACIS-456789	Obspar file type	PREDICTED	ACTUAL
Grating	NONE	NONE	Obspar update status	NONE	UPDATED
Data mode	GRADED	GRADED	Number of optional ACIS chips dropped	0	0
Observation mode	POINTING	POINTING	On-chip summing requested	N	N
[deg] Pointing RA	288.691435	288.7182483347913	Subarray requested	CUSTOM	1/4
[deg] Pointing Dec	10.863272	10.85626787880811	Subarray start row	385	385
[deg] Pointing Roll	314.178889	314.3304745138664	Subarray row count	256	256
[deg] Roll angle	120.000000	120.000000	Alternating exposures requested	N	N
[deg] Roll tolerance	23.000000	23.000000	[s] Primary exposure time	0.000000	1.1
Roll constraint allows 180D rotation	Y	Y			
[mm] SIM focus pos	-0.684267	-0.6828225247311905			
[mm] SIM defocus	0	0.09952569084879603			
[mm] SIM translation stage pos	-210.632523	-210.636764388189			
[mm] SIM translation stage offset	20.5	-22.95568861474067			
[s] Observation start time (MET)	187165211.184000	187164095.83005			
Observation start date	2003-12-07T06:19:07	2003-12-07T06:01:35			
[s] Observation end time (MET)	187195211.184000	187197093.14398			
Observation end date	2003-12-07T14:39:07	2003-12-07T15:11:33			
Read mode	TIMED	TIMED			

2.3 Aspect



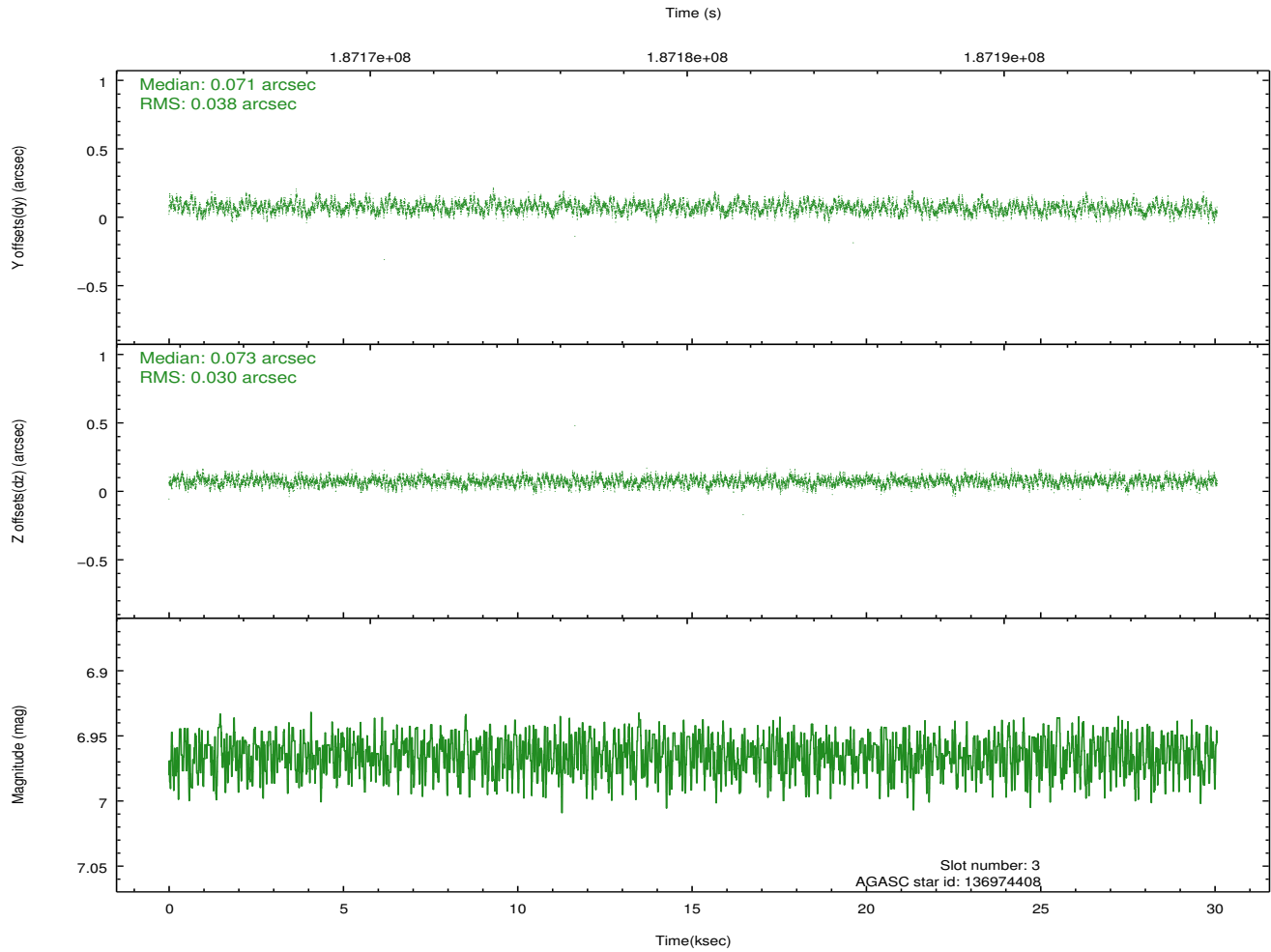
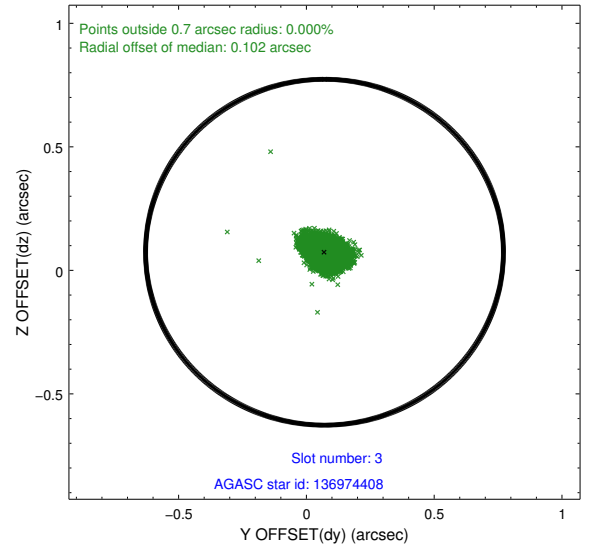
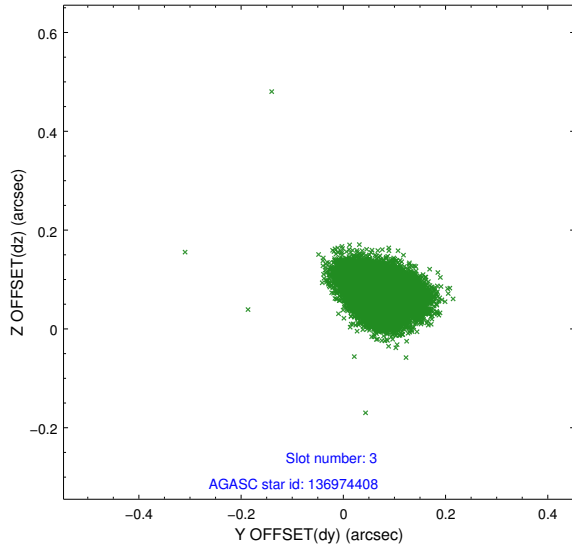


Slot Statistics

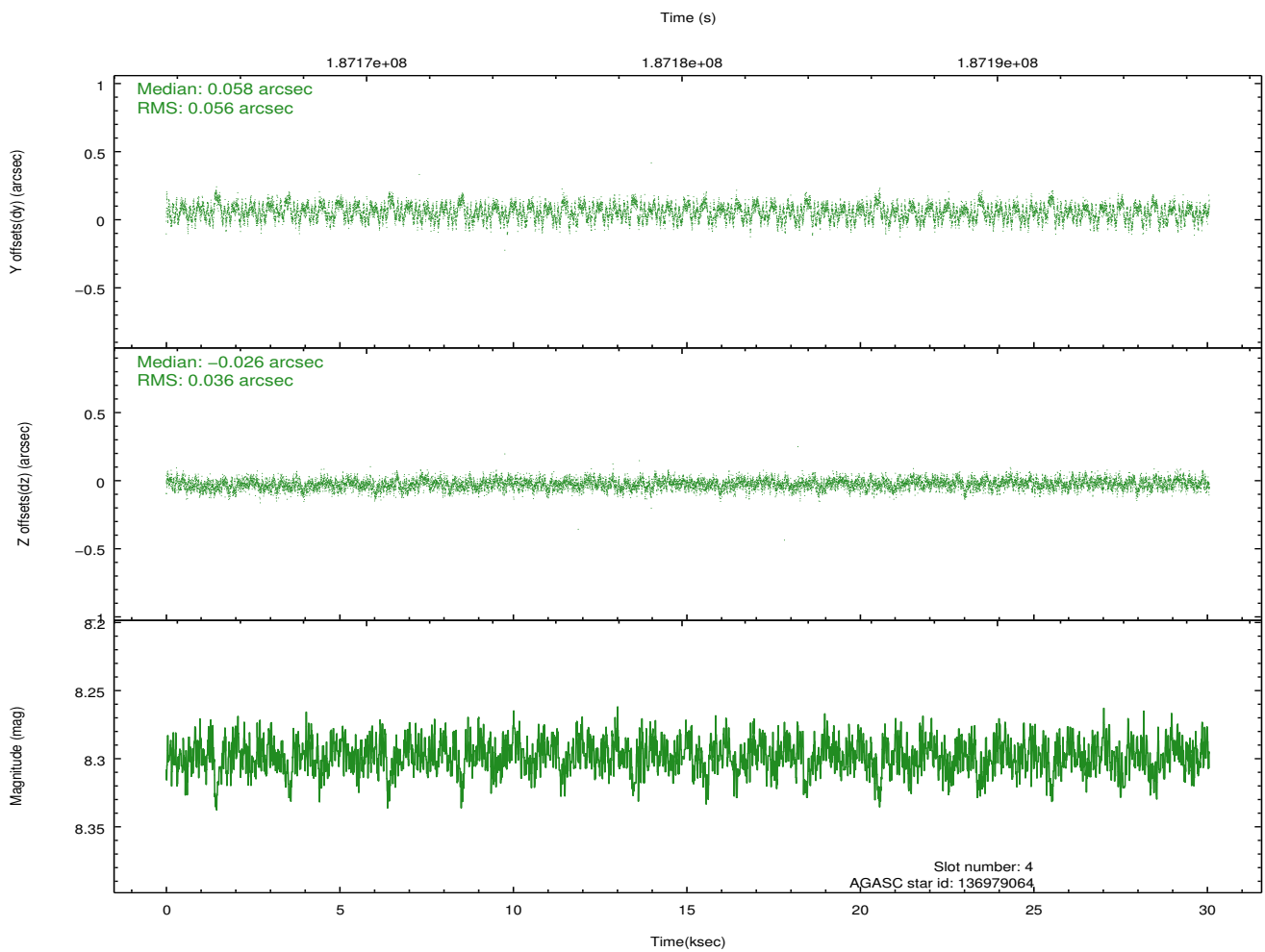
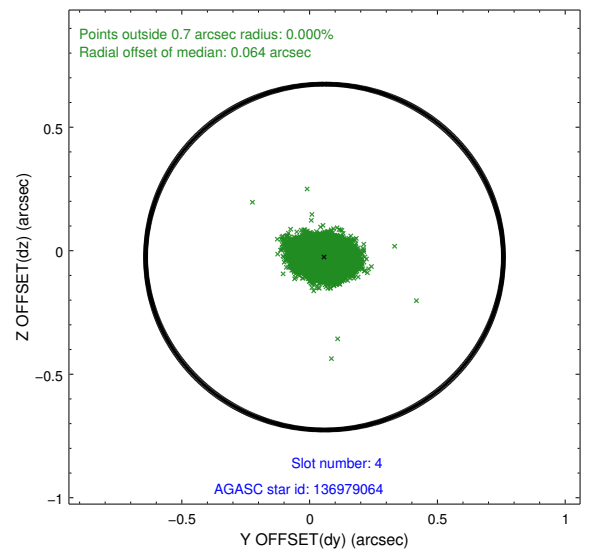
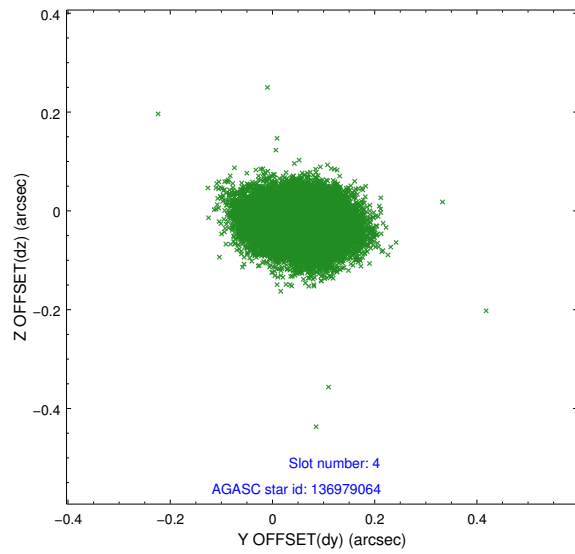
slot	status	id	mag	n_pts	med_dy	med_dz	dr1	dr2	ra	dec	mean_y	mean_z
0	FID	ACIS-I-2	7.17	7333	-0.244	-0.036	0.027	0.044	0.000000	0.000000	-760.18	-1310.04
1	FID	ACIS-I-4	7.20	7333	-0.378	0.457	0.019	0.028	0.000000	0.000000	2153.34	597.16
2	FID	ACIS-I-6	7.27	7333	0.594	-0.417	0.024	0.035	0.000000	0.000000	401.34	1236.13
3	GUIDE	136974408	6.96	14664	0.071	0.073	0.051	0.083	288.806802	10.212409	1965.67	-1339.15
4	GUIDE	136979064	8.30	14664	0.058	-0.026	0.071	0.113	288.570676	10.073188	1742.23	-2288.78
5	GUIDE	137497048	7.98	14665	0.052	-0.036	0.068	0.115	288.896055	11.554718	-1281.38	2252.49
6	GUIDE	137498872	7.05	14603	-0.052	-0.053	0.050	0.080	288.350862	11.344926	-2081.65	346.80
7	GUIDE	136971792	7.81	14665	-0.133	0.045	0.062	0.097	287.875355	10.894240	-2092.88	-1988.70

2.4 Star Slots

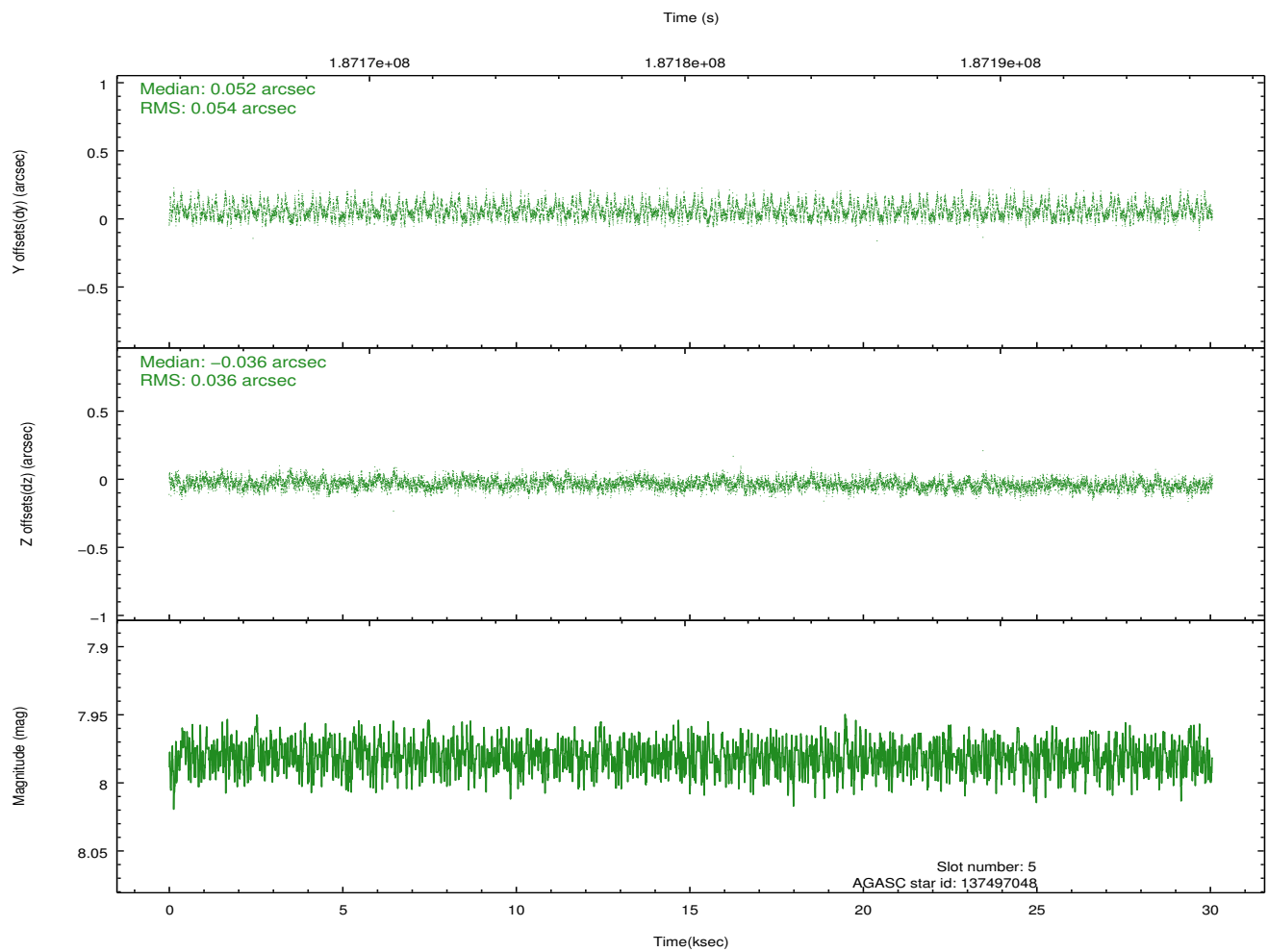
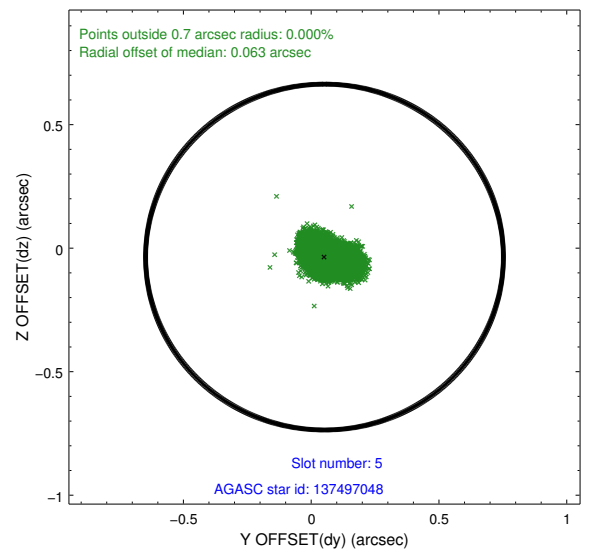
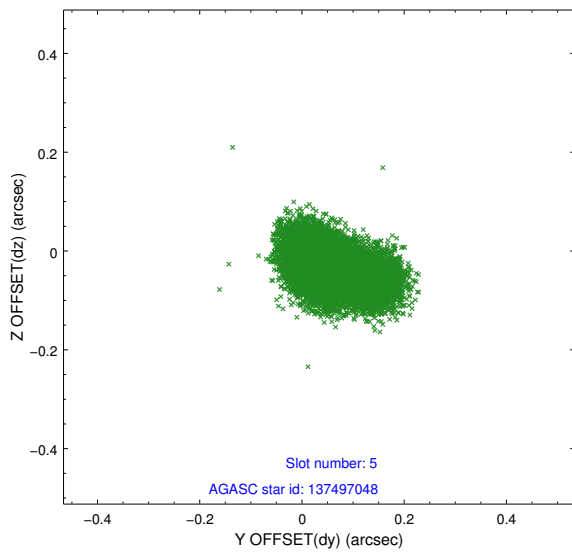
2.4.1 Slot 3



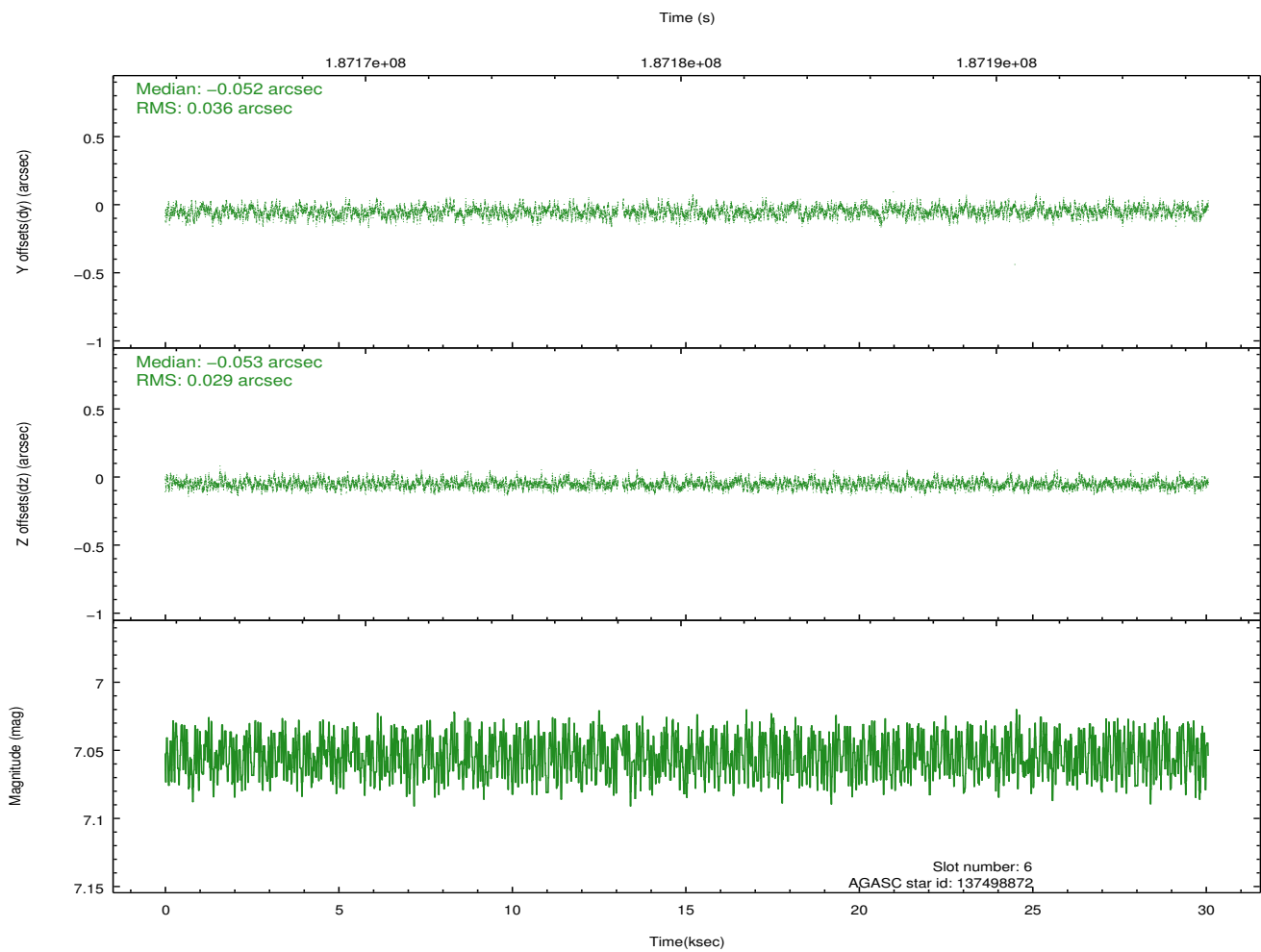
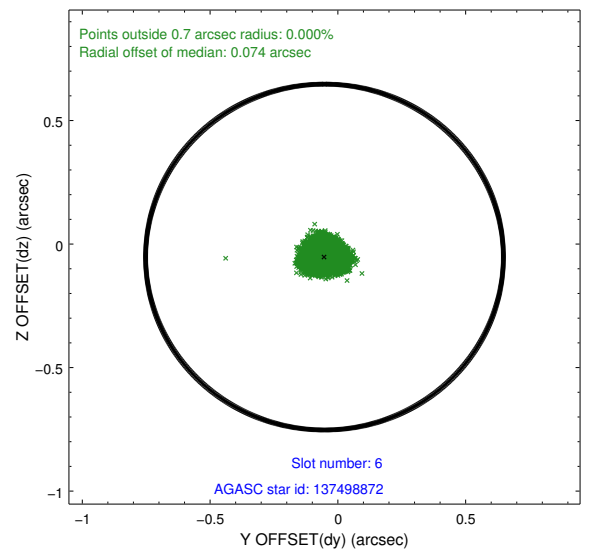
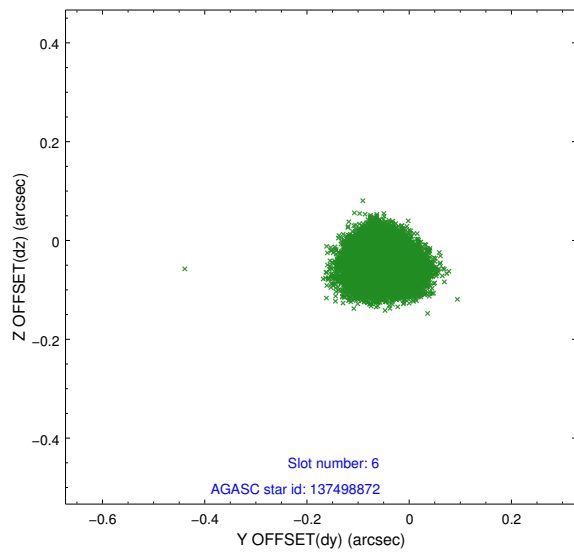
2.4.2 Slot 4



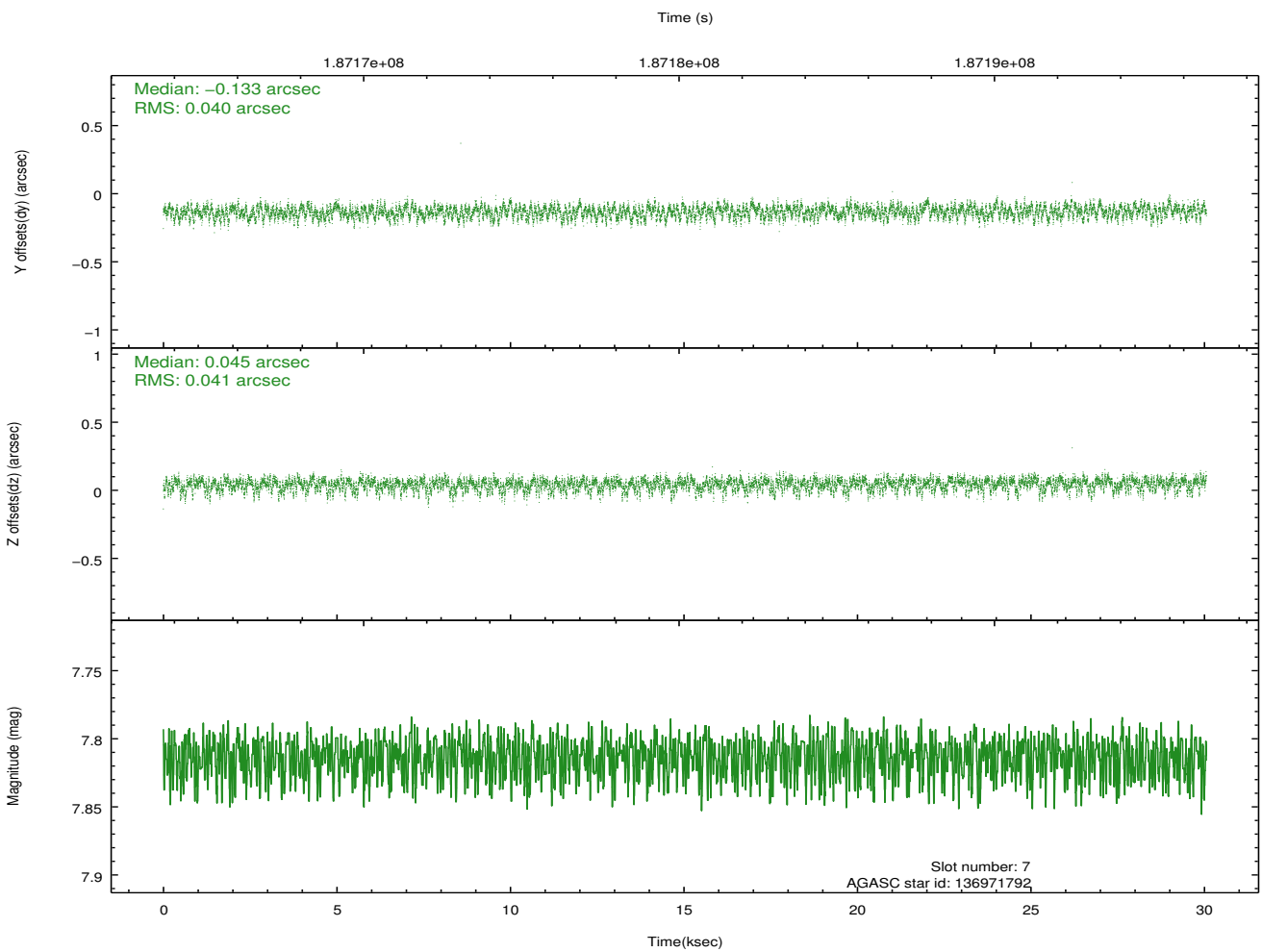
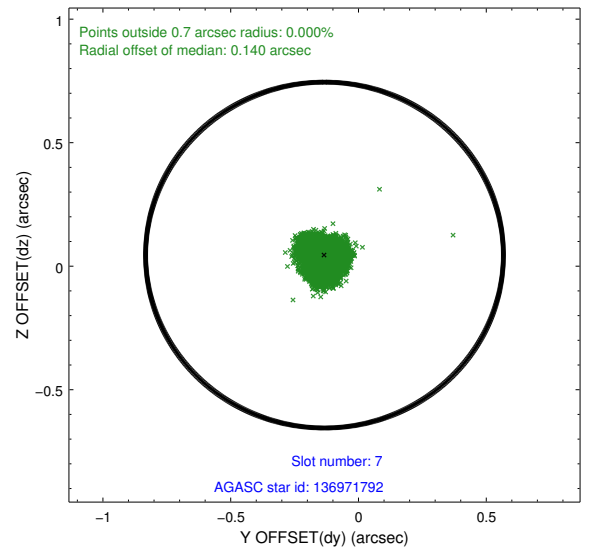
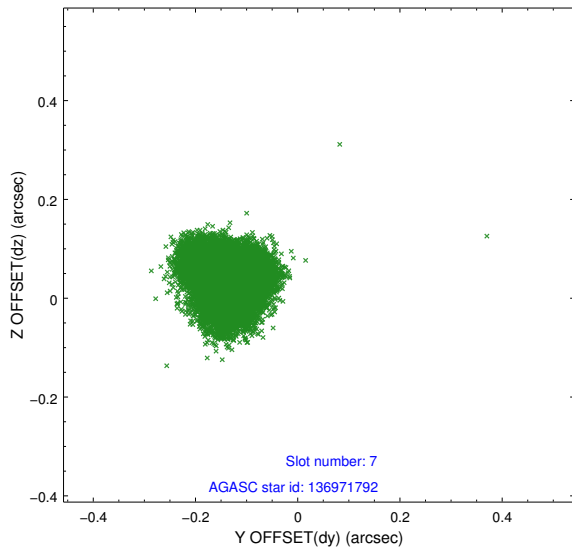
2.4.3 Slot 5



2.4.4 Slot 6

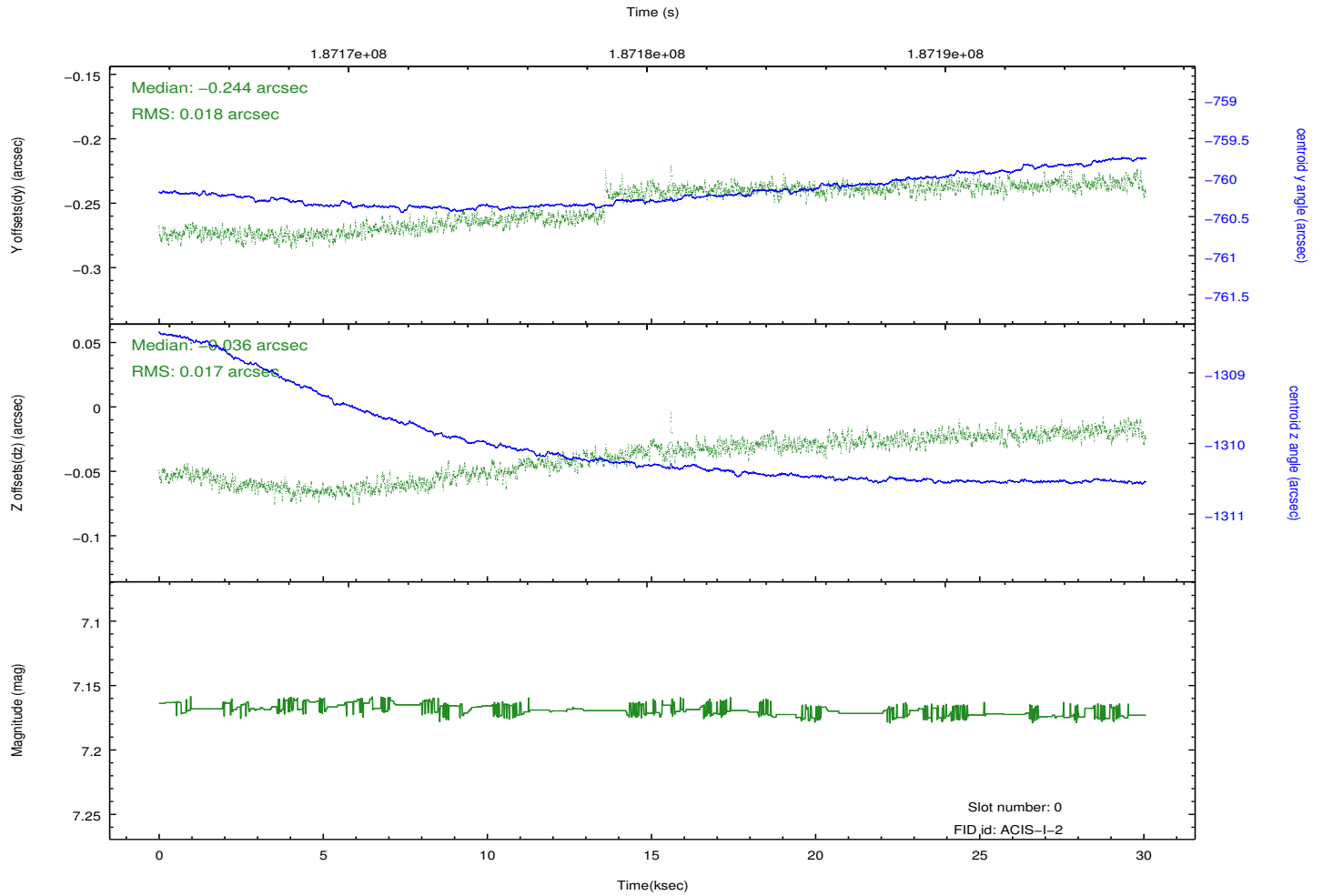
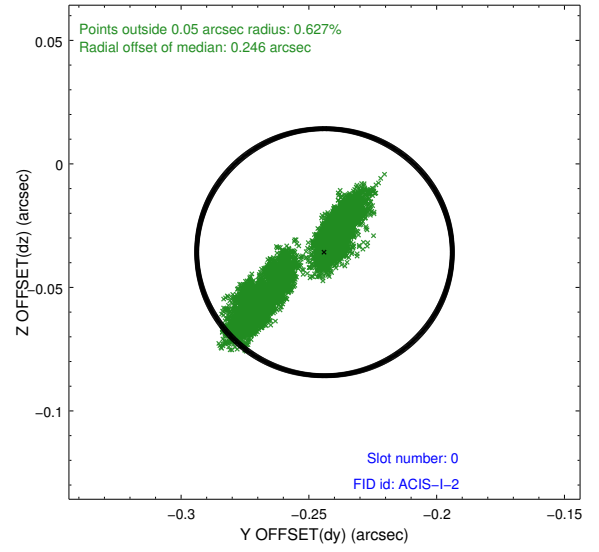
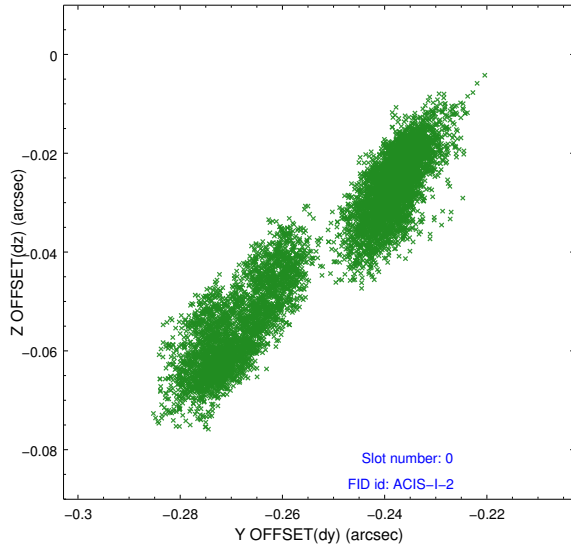


2.4.5 Slot 7

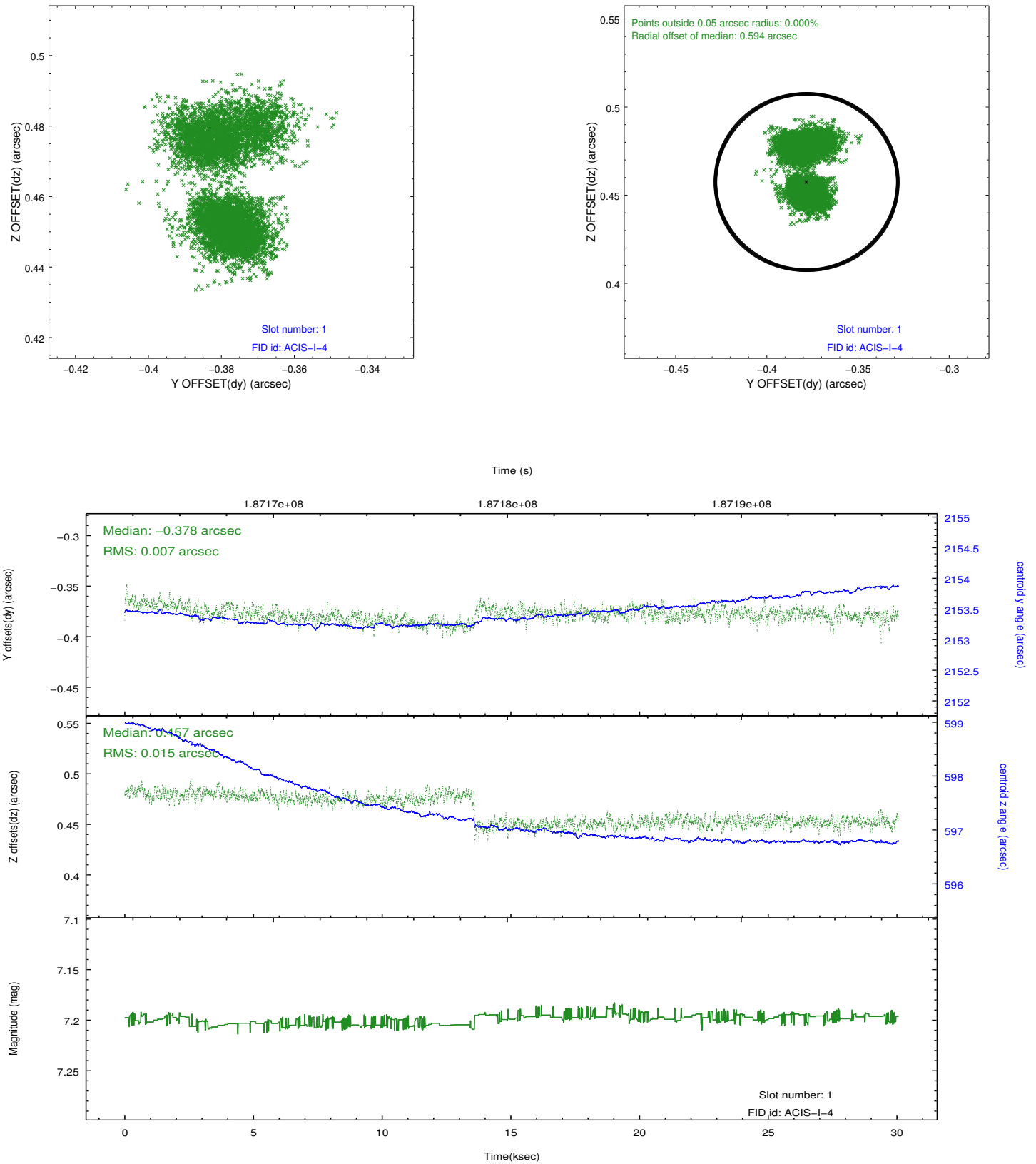


2.5 FID Slots

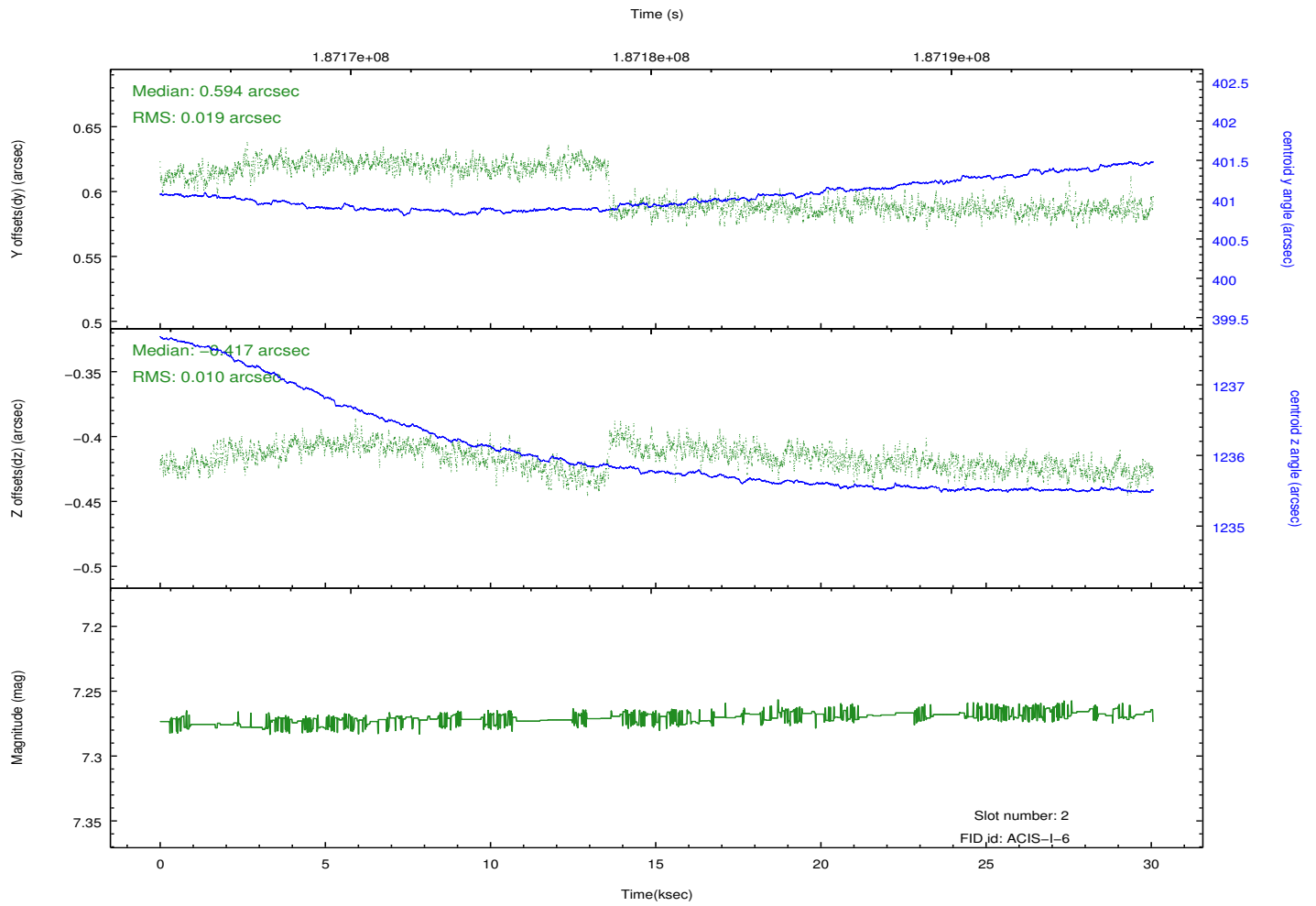
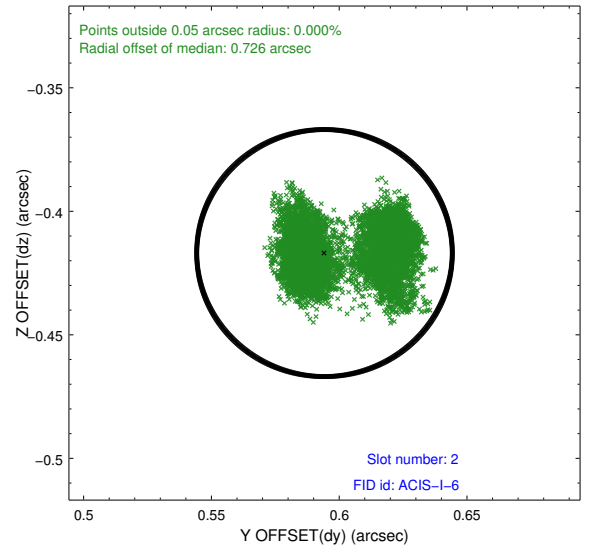
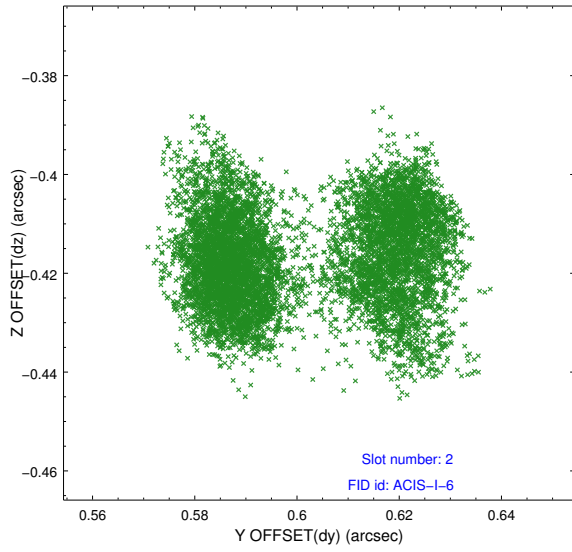
2.5.1 Slot 0



2.5.2 Slot 1



2.5.3 Slot 2



A Summary

A.1 Status

V&V Scientist	Jen Lauer
V&V Date (YYYY-MM-DD)	2013.01.31
V&V Edition	1
V&V Disposition and Status	OK
V&V Charge Time	30.061

A.2 Comments

Roll constraint met.