

# V&V Reference Report

## L2 ASCDS Version : 8.5

Observation 4812 - L2 Version 3  
Chandra X-Ray Center

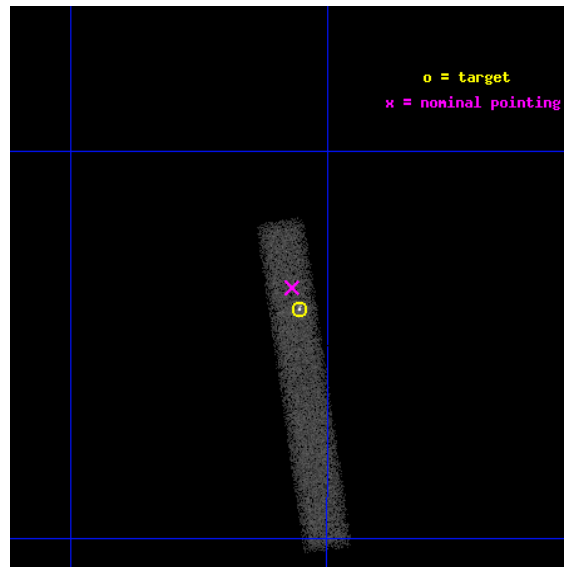
L2 Processing Date : Dec 12 2012

## Contents

<b>1</b>	<b>Front</b>	<b>2</b>
<b>2</b>	<b>OBI</b>	<b>3</b>
2.1	OBI . . . . .	3
2.1.1	Images . . . . .	3
2.1.2	Bias . . . . .	3
2.1.3	Parameters . . . . .	4
2.1.4	Events . . . . .	4
2.2	Compared Parameters . . . . .	5
2.3	Aspect . . . . .	6
2.4	Star Slots . . . . .	9
2.4.1	Slot 3 . . . . .	9
2.4.2	Slot 4 . . . . .	10
2.4.3	Slot 5 . . . . .	11
2.4.4	Slot 6 . . . . .	12
2.4.5	Slot 7 . . . . .	13
2.5	FID Slots . . . . .	14
2.5.1	Slot 0 . . . . .	14
2.5.2	Slot 1 . . . . .	15
2.5.3	Slot 2 . . . . .	16
<b>A</b>	<b>Summary</b>	<b>17</b>
A.1	Status . . . . .	17
A.2	Comments . . . . .	17

# 1 Front

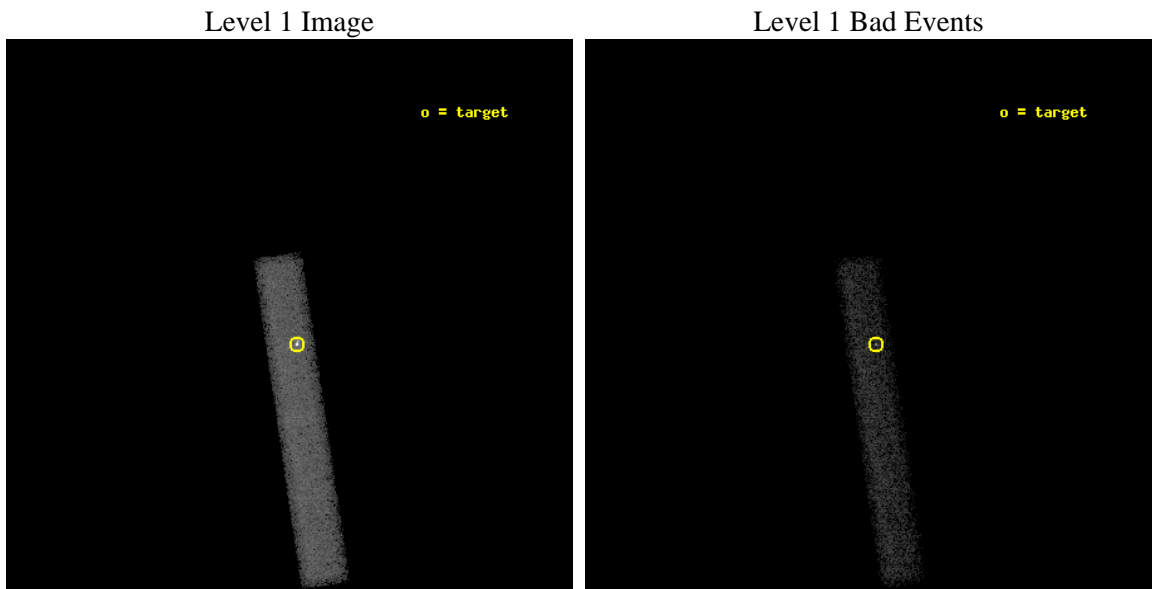
seq_num	700895	Sequence number
obs_id	4812	Observation id
title	Detailed Study of X-ray Jets from a Complete Survey	Proposal title
observer	Prof. Eric Perlman	Principal investigator
object	PKS 1202-262	Source name
dtcycle	0	&#160
cycle	P	events from which exps? Prim/Second/Both
ra_targ	181.38875	Observer's specified target RA [deg]
dec_targ	-26.567833	Observer's specified target Dec [deg]
ra_nom	181.39219928815	Nominal RA [deg]
dec_nom	-26.558665387021	Nominal Dec [deg]
roll_nom	81.550990800287	Nominal Roll [deg]
revision	3	Processing version of data
ontime	39168.154363483	Sum of GTIs [s]
livetime	35523.448542974	Livetime [s]
ontime7	39168.154363483	Sum of GTIs [s]
l2events	32767	Number of level 2 events



## 2 OBI

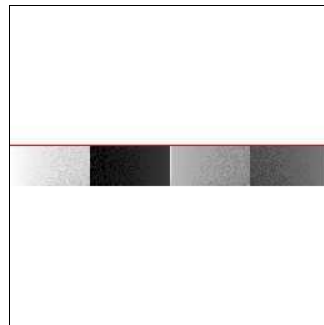
### 2.1 OBI

#### 2.1.1 Images



#### 2.1.2 Bias

Chip 7



### 2.1.3 Parameters

obi_num	0	Obi number	sched_exp_time	39000.000000	[s] Scheduled observation exposure time
ascdsver	8.5	Processing system revision	ontime	39168.154363483	Sum of GTIs [s]
caldbver	4.5.4	&#160	ontime7	39168.154363483	Sum of GTIs [s]
date	2012-12-12T02:56:45	Date and time of file creation	l1events	64041	Number of level 1 events
revision	3	Processing version of data			

### 2.1.4 Events

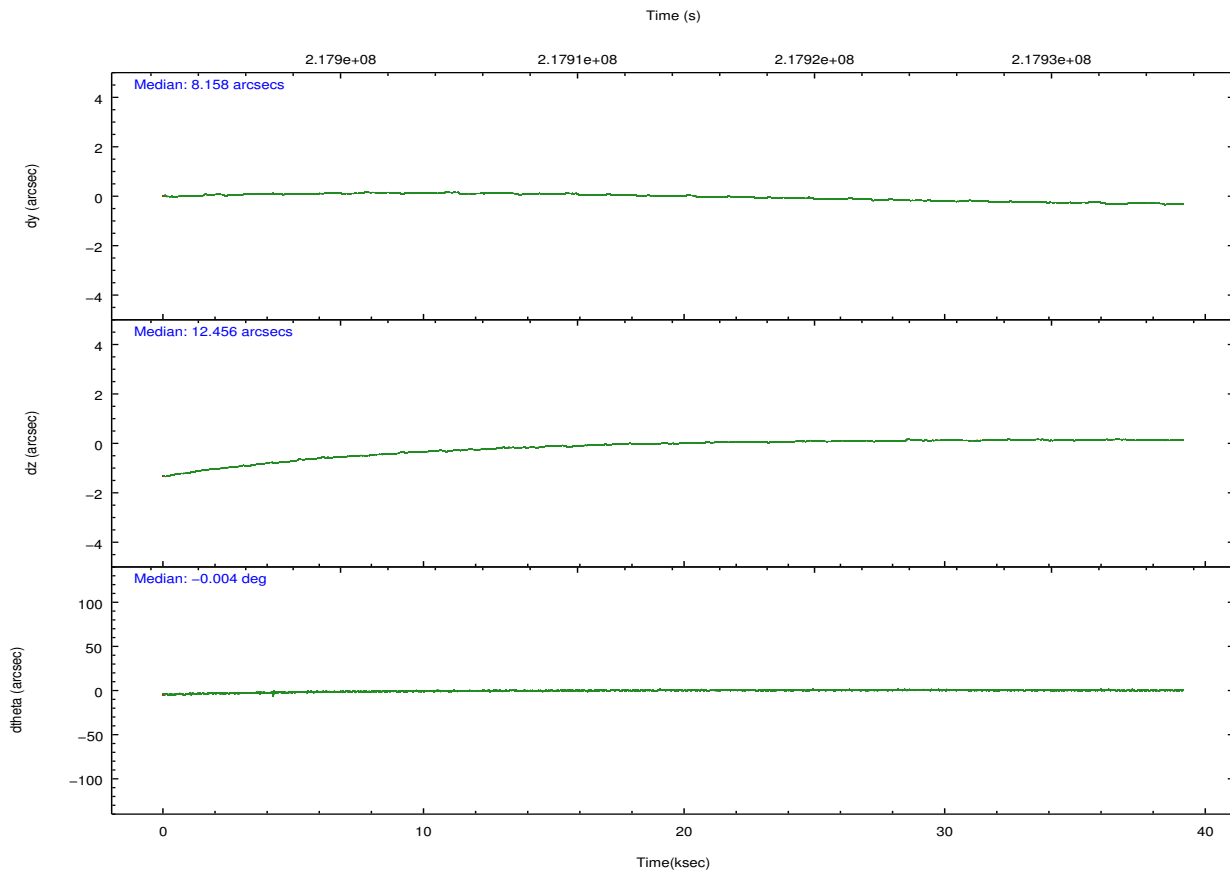
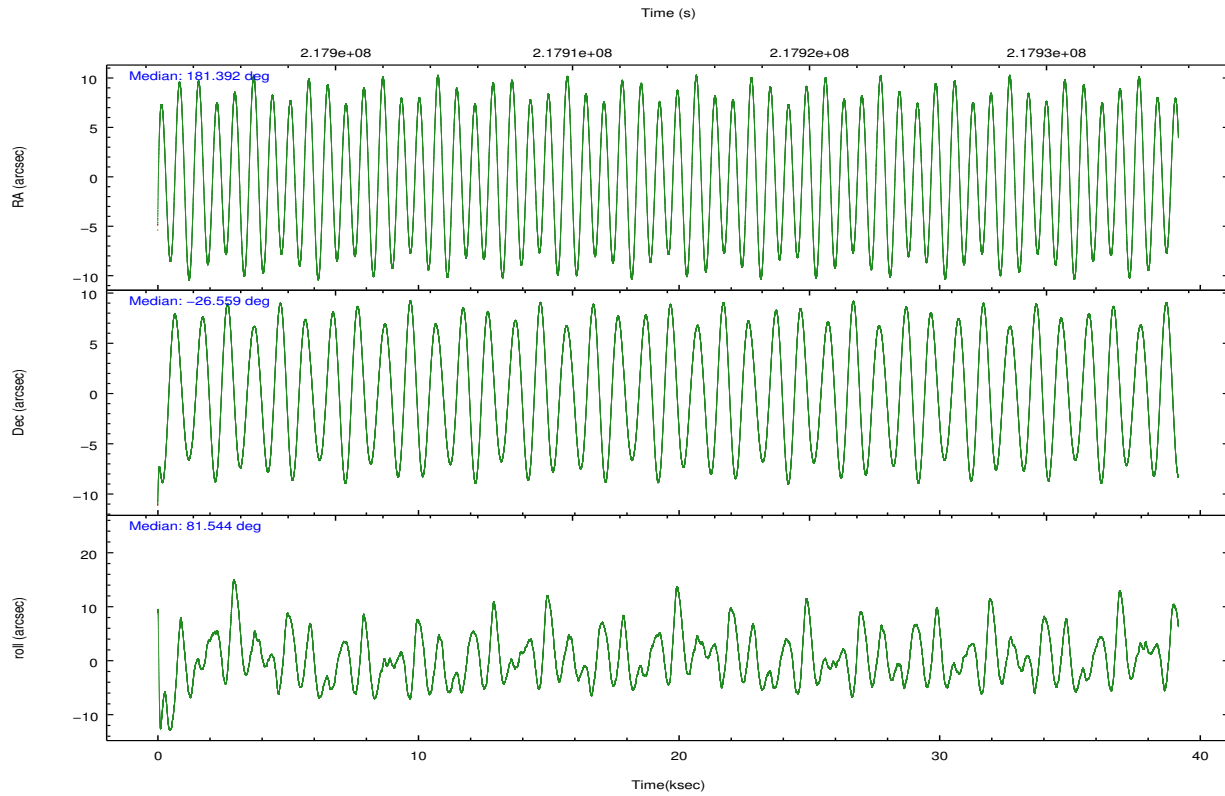
	<b>ccd 7</b>
level 1 events	64041
rejected events	29859
rejected %	46%

	<b>ccd 7</b>
grade 0 events	5461
	8%
grade 1 events	85
	0%
grade 2 events	7143
	11%
grade 3 events	4440
	6%
grade 4 events	4211
	6%
grade 5 events	5178
	8%
grade 6 events	13302
	20%
grade 7 events	24221
	37%

## 2.2 Compared Parameters

Parameter	Planned	Actual	Parameter	Planned	Actual
Instrument	ACIS	ACIS	Obspar format version number	7	7
Detector	ACIS-7	ACIS-7	Obspar file type	PREDICTED	ACTUAL
Grating	NONE	NONE	Obspar update status	NONE	UPDATED
Data mode	VFAINT	VFAINT	Number of optional ACIS chips dropped	0	0
Observation mode	POINTING	POINTING	On-chip summing requested	N	N
[deg] Pointing RA	181.403749	181.3921992881544	Subarray requested	CUSTOM	1/8
[deg] Pointing Dec	-26.583855	-26.55866538702091	Subarray start row	449	449
[deg] Pointing Roll	81.399520	81.55099080028701	Subarray row count	128	128
[mm] SIM focus pos	-0.684267	-0.6828225247311905	Alternating exposures requested	N	N
[mm] SIM defocus	0	0.001444936568705701	[s] Primary exposure time	0.000000	0.4
[mm] SIM translation stage pos	-190.132523	-190.1400660498719			
[mm] SIM translation stage offset	0	0.00754346686406393			
[s] Observation start time (MET)	217894612.184000	217893720.70058			
Observation start date	2004-11-26T22:15:48	2004-11-26T22:02:00			
[s] Observation end time (MET)	217933612.184000	217934527.48991			
Observation end date	2004-11-27T09:05:48	2004-11-27T09:22:07			
Read mode	TIMED	TIMED			

## 2.3 Aspect

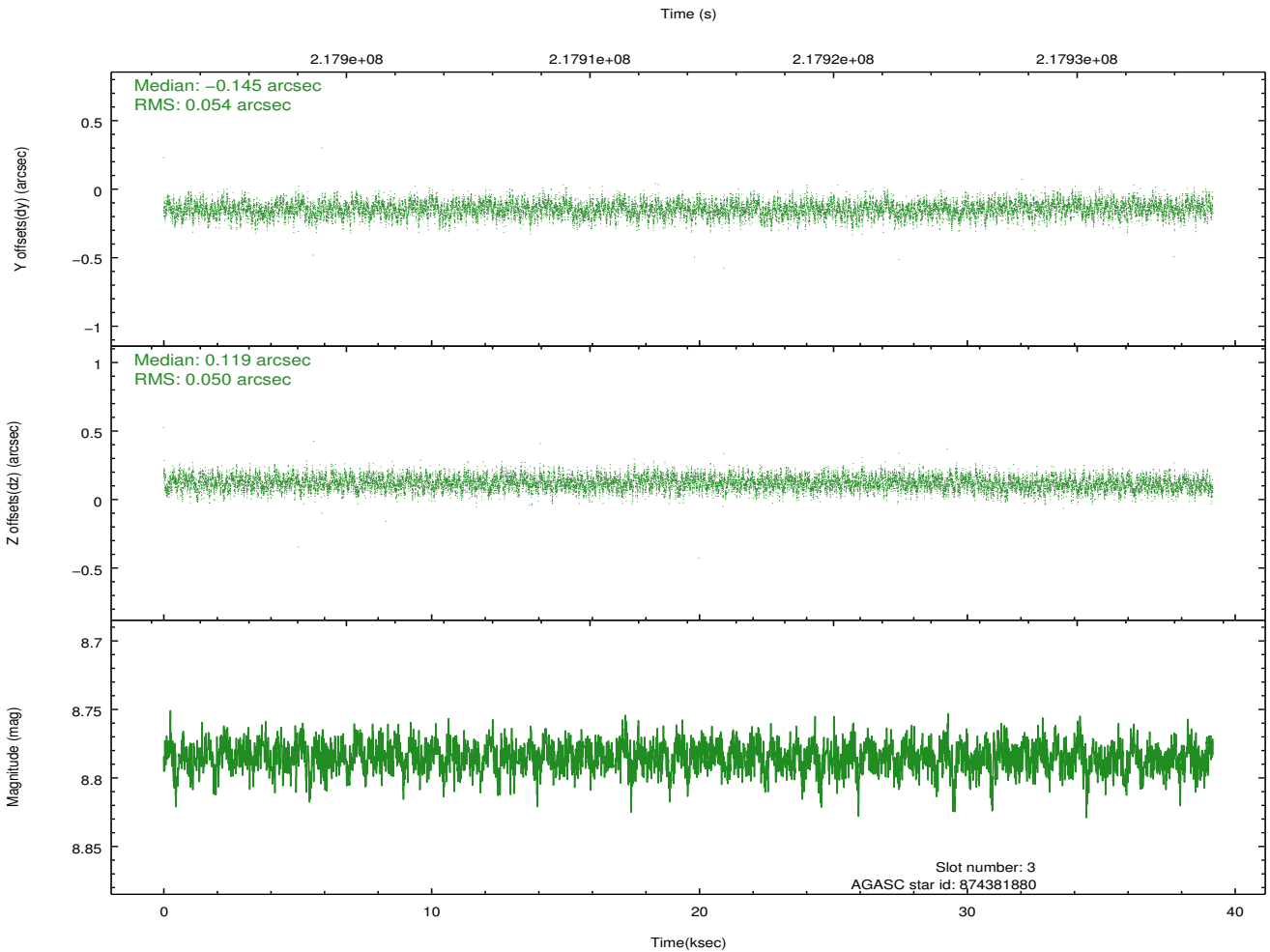
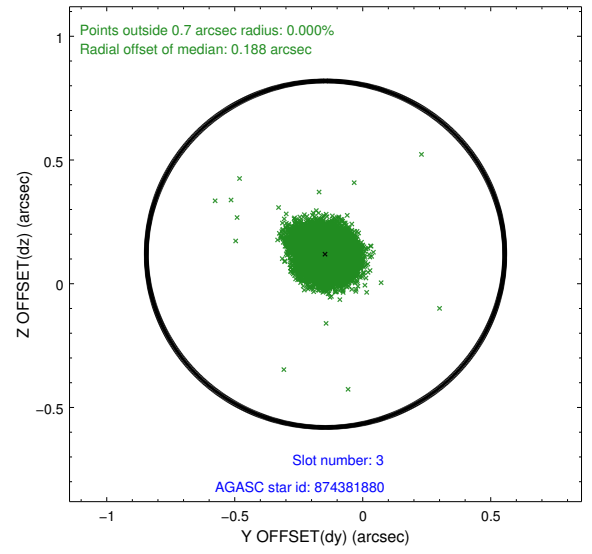
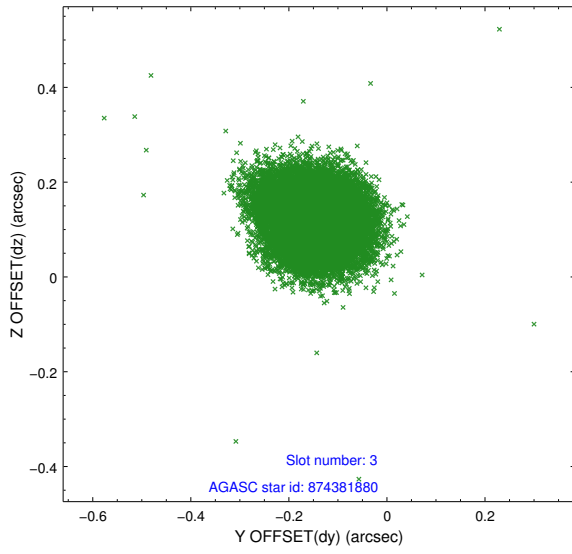


### Slot Statistics

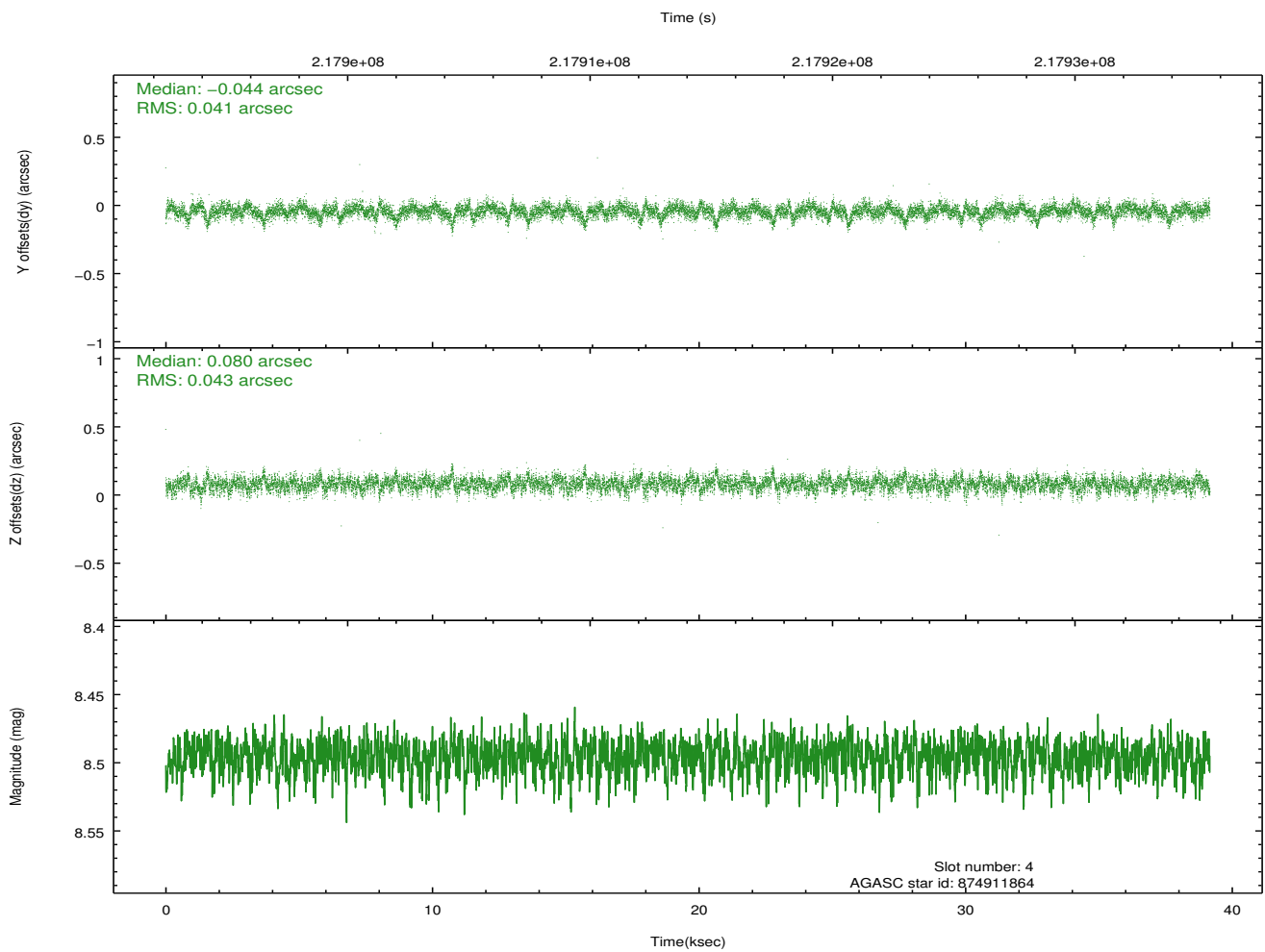
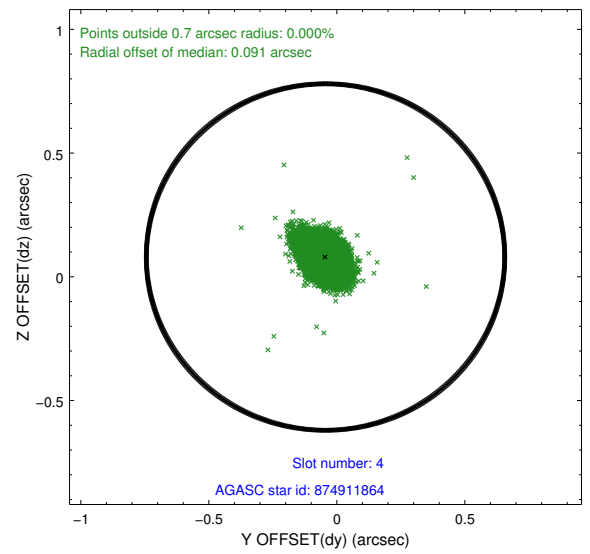
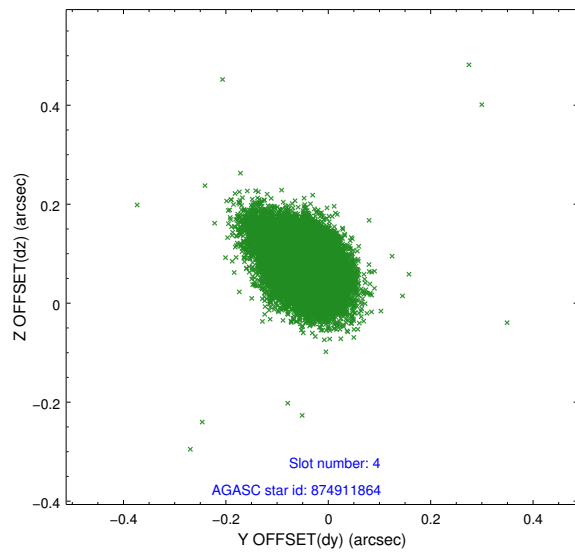
slot	status	id	mag	n_pts	med_dy	med_dz	dr1	dr2	ra	dec	mean_y	mean_z
0	FID	ACIS-S-2	7.10	9553	-0.005	-0.025	0.014	0.024	0.000000	0.000000	-760.91	-1733.61
1	FID	ACIS-S-4	7.20	9553	0.082	0.010	0.011	0.020	0.000000	0.000000	2152.45	174.88
2	FID	ACIS-S-5	7.23	9553	-0.106	0.026	0.012	0.022	0.000000	0.000000	-1813.82	168.60
3	GUIDE	874381880	8.78	19100	-0.145	0.119	0.078	0.125	181.999738	-26.203366	1638.25	-1698.19
4	GUIDE	874911864	8.50	19104	-0.044	0.080	0.061	0.106	181.589038	-26.398733	748.40	-490.71
5	GUIDE	874912296	9.40	19090	0.011	0.266	0.082	0.134	181.462305	-26.617404	-90.78	-203.81
6	GUIDE	874912992	8.68	19099	0.020	-0.149	0.066	0.108	181.349458	-26.681675	-373.92	120.17
7	GUIDE	874913272	9.93	19007	0.163	-0.314	0.138	0.221	180.758927	-26.765801	-962.46	1950.68

## 2.4 Star Slots

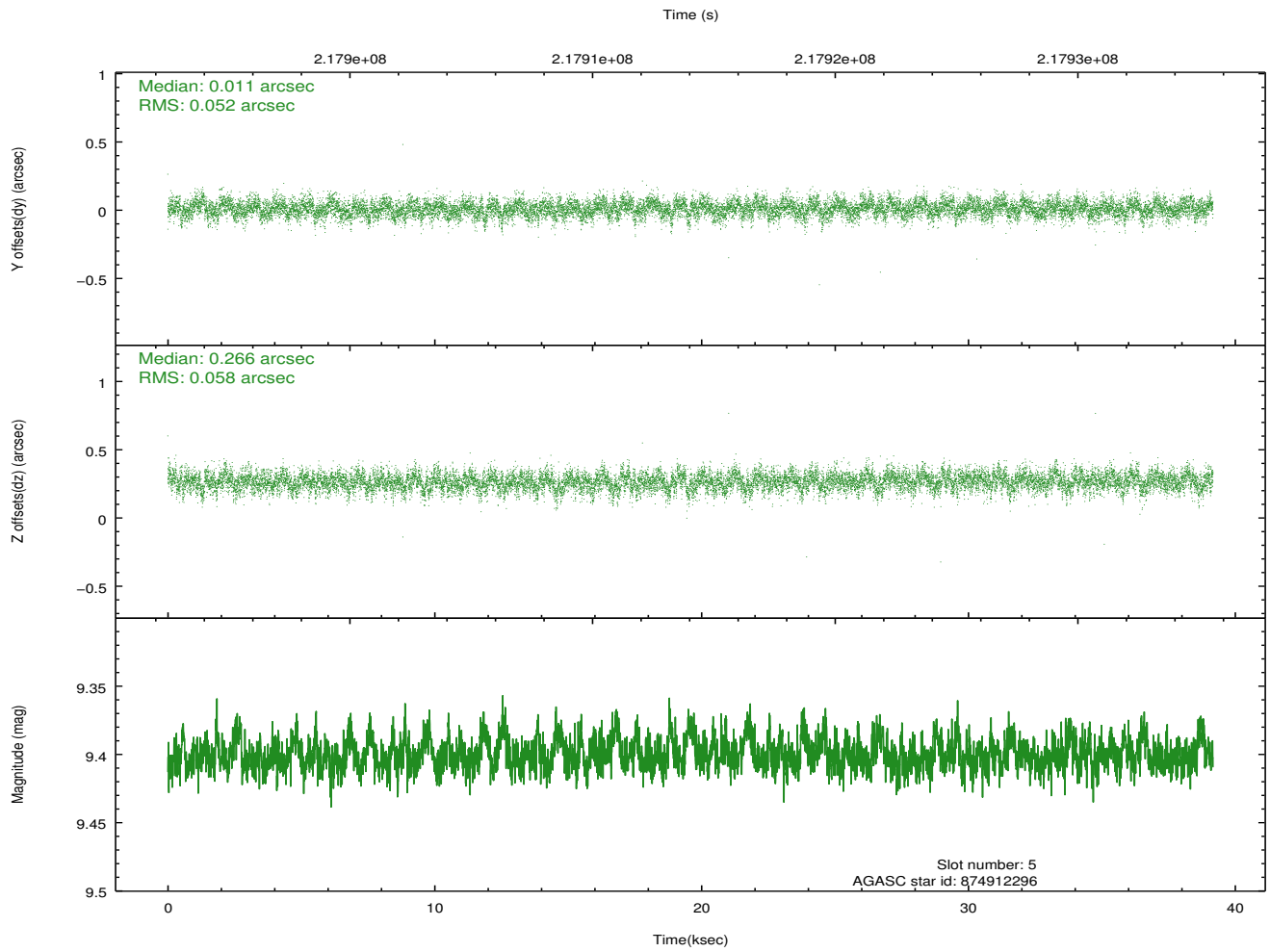
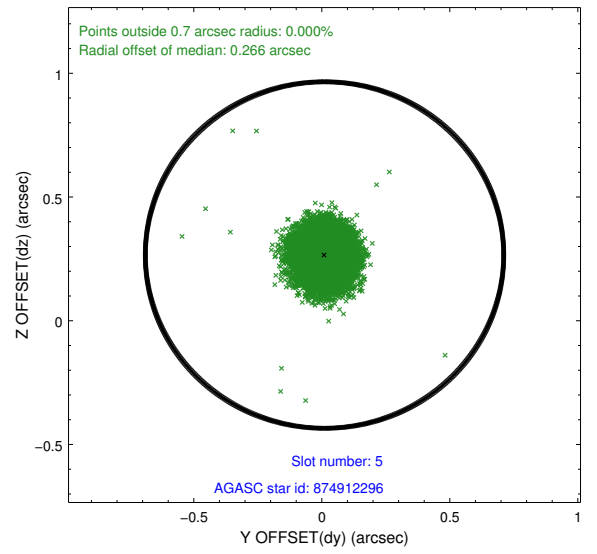
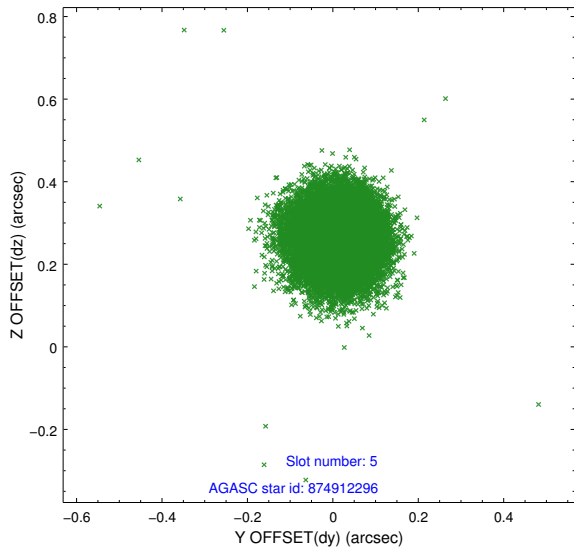
### 2.4.1 Slot 3



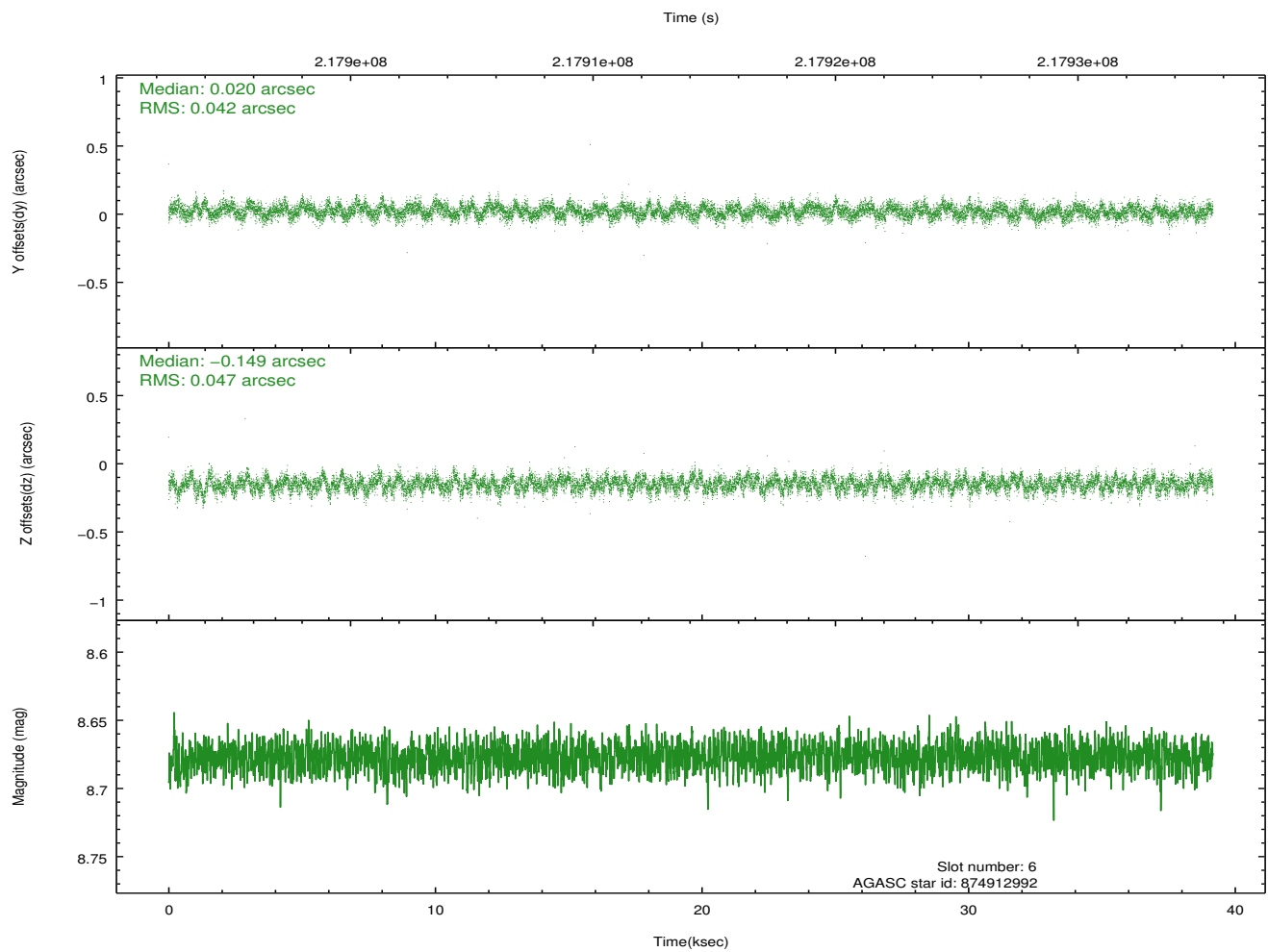
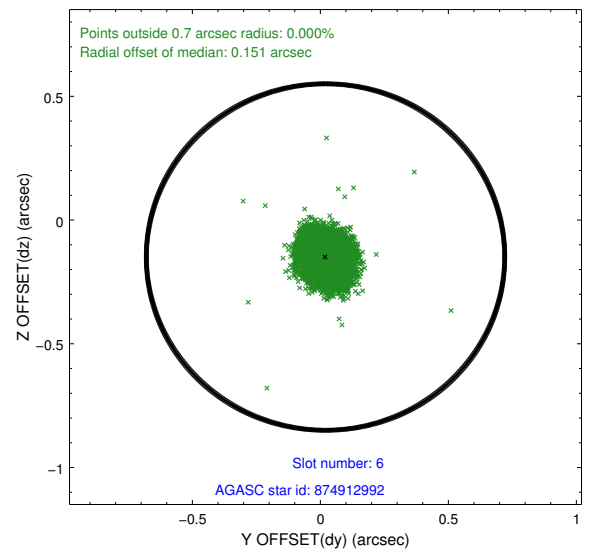
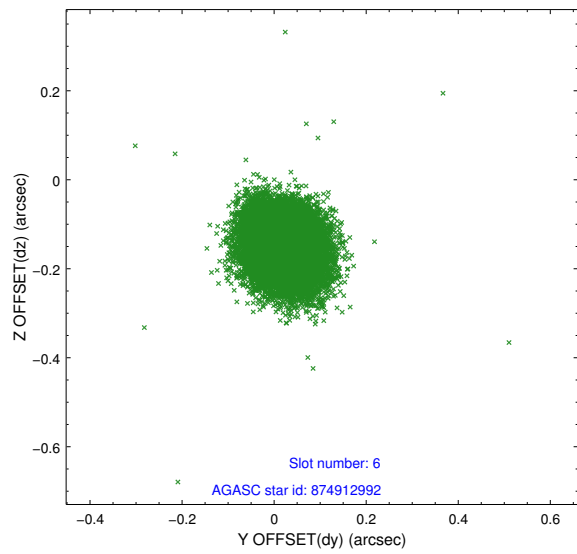
## 2.4.2 Slot 4



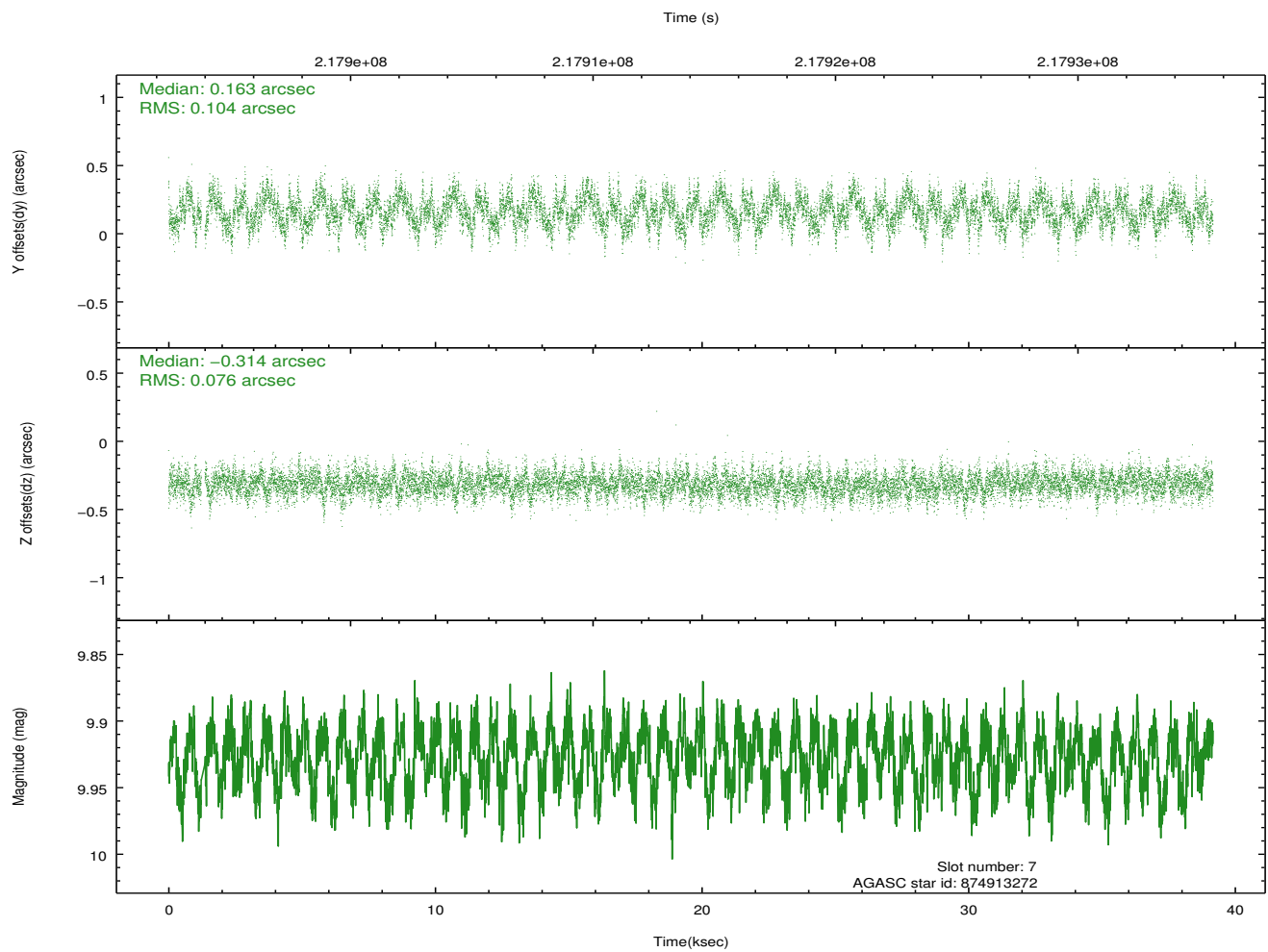
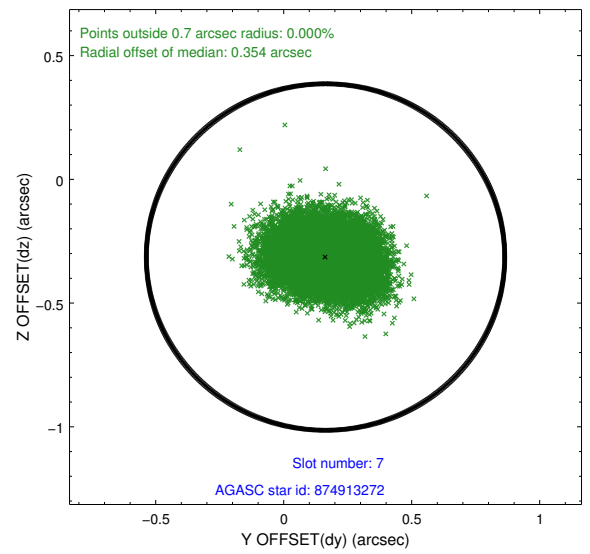
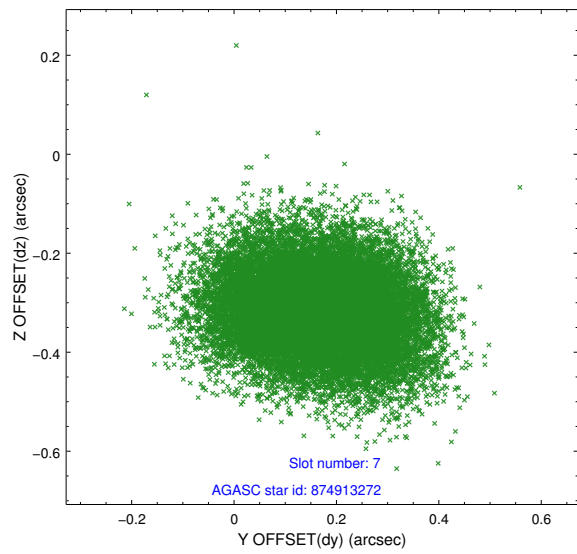
### 2.4.3 Slot 5



## 2.4.4 Slot 6

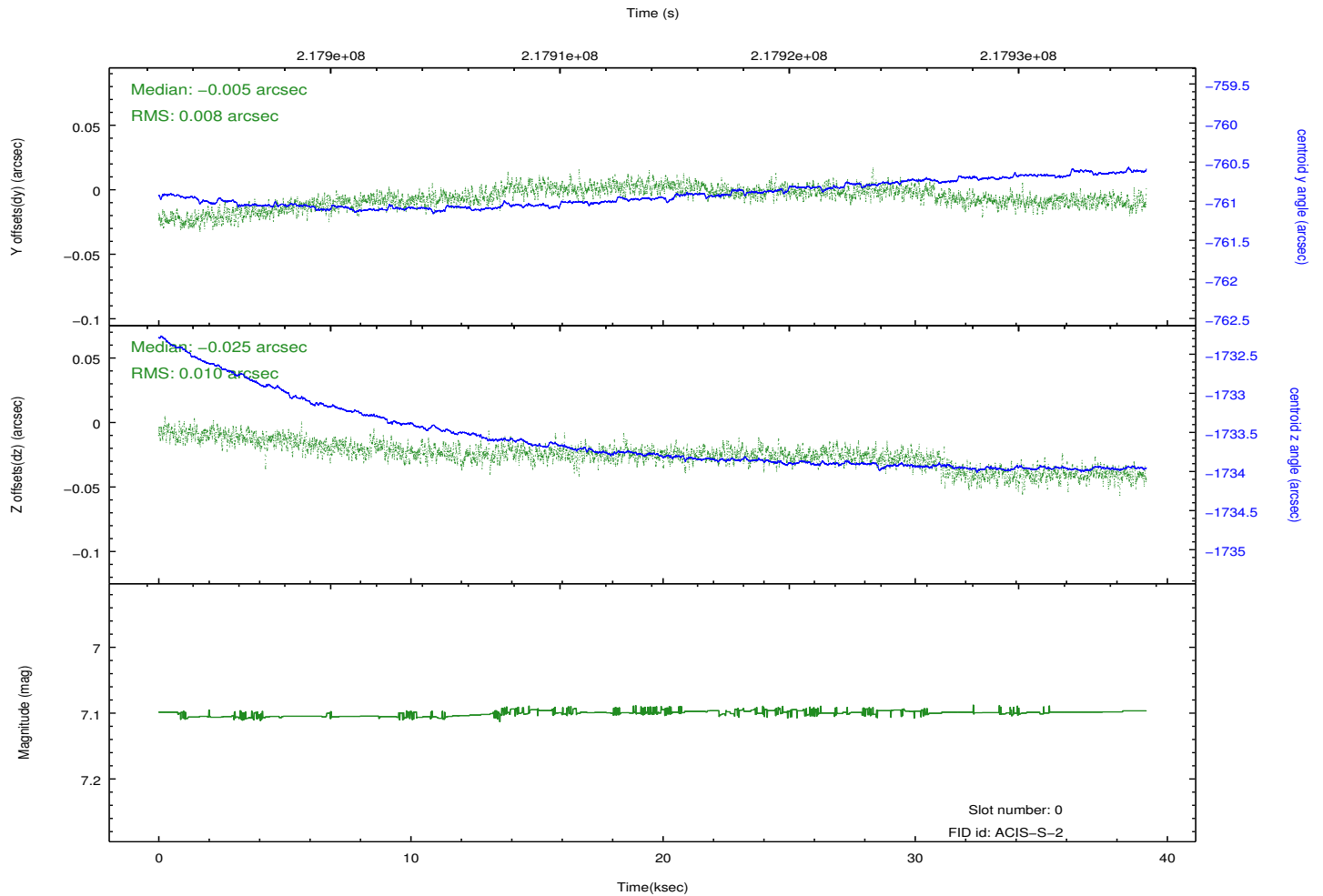
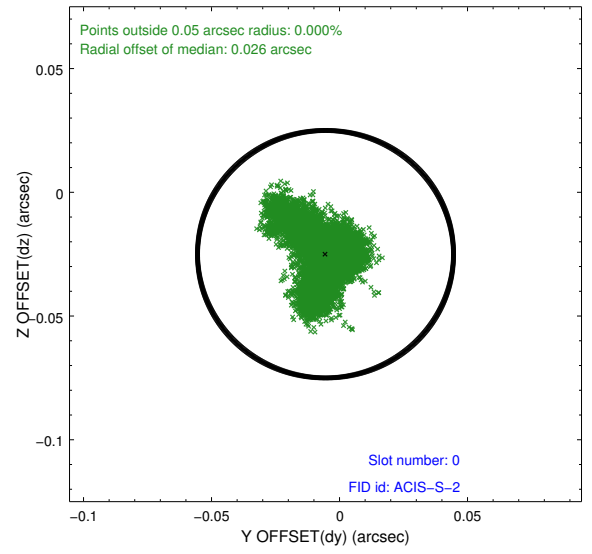
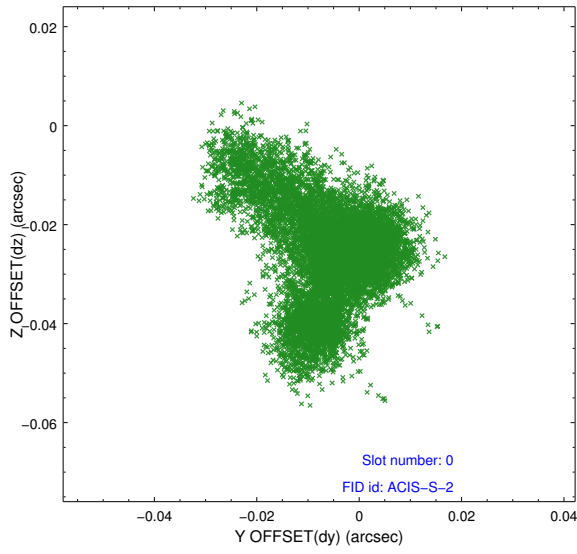


## 2.4.5 Slot 7

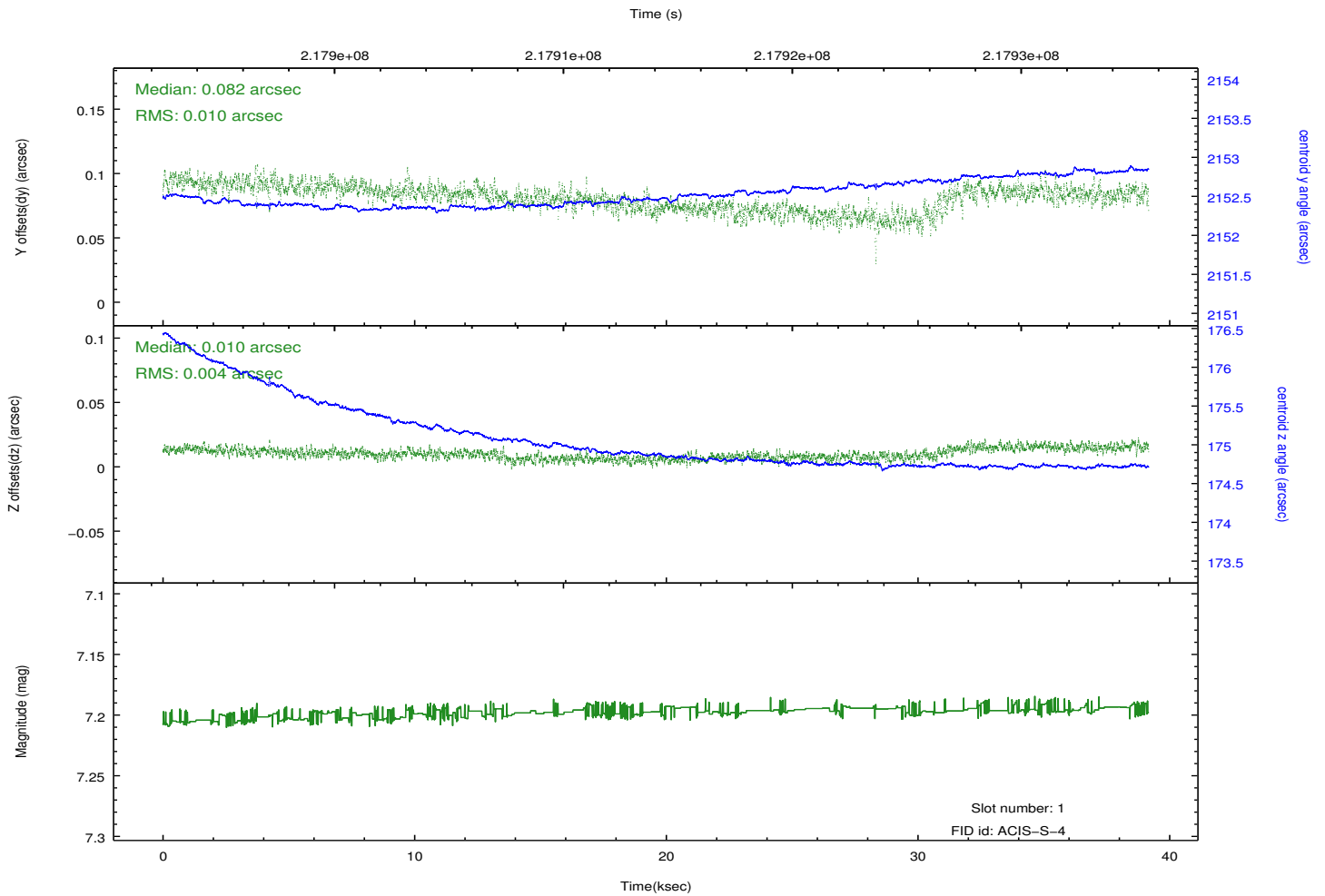
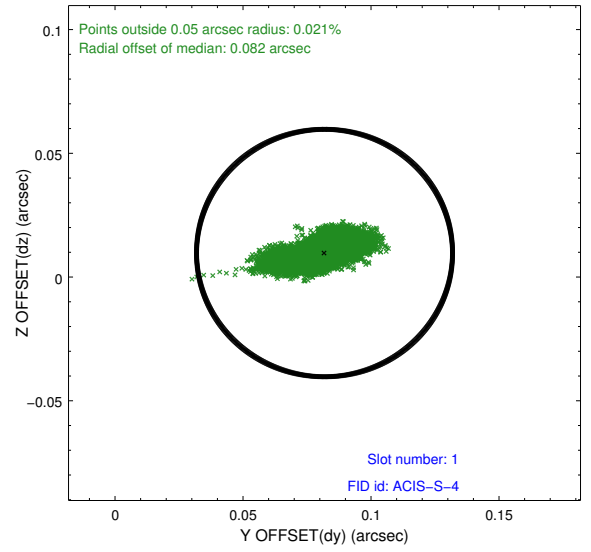
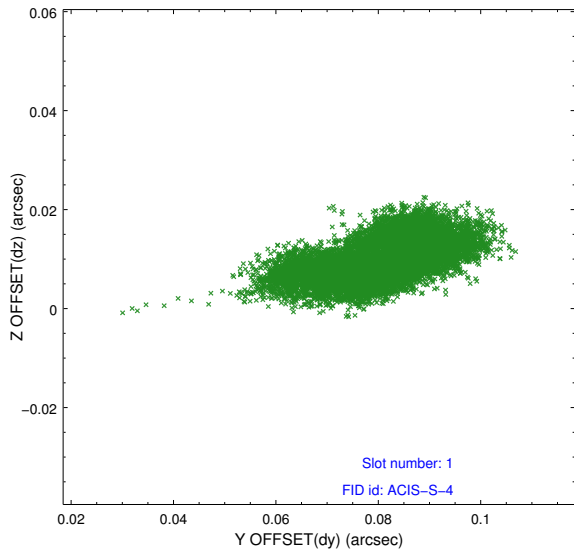


## 2.5 FID Slots

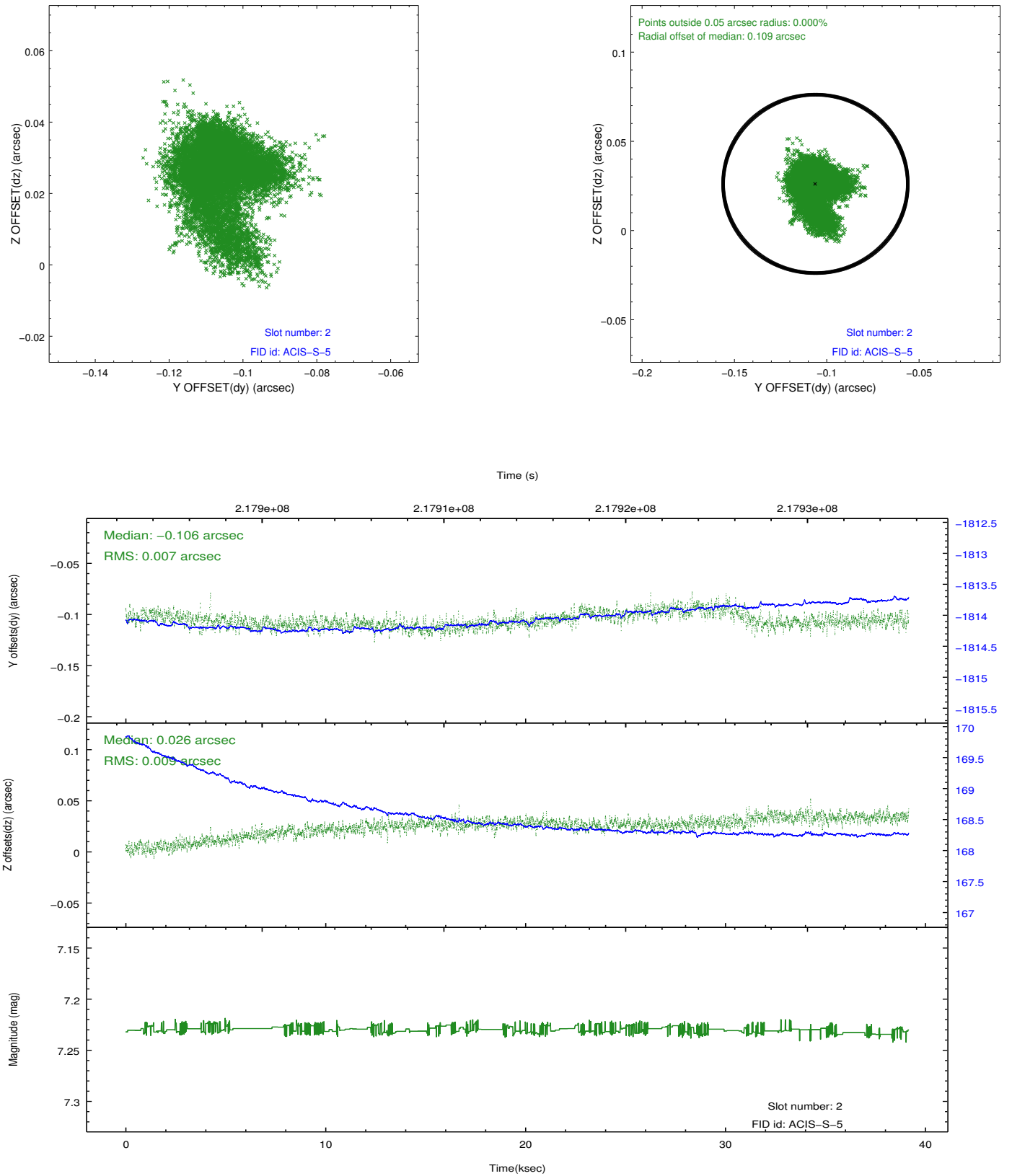
### 2.5.1 Slot 0



## 2.5.2 Slot 1



### 2.5.3 Slot 2



# A Summary

## A.1 Status

V&V Scientist	Jen Lauer
V&V Date (YYYY-MM-DD)	2013.01.02
V&V Edition	1
V&V Disposition and Status	OK
V&V Charge Time	39.16815

## A.2 Comments

Joint Proposal: HST. Roll preference met.