

V&V Reference Report

L2 ASCDS Version : 8.4.5

Observation 4852 - L2 Version 4
Chandra X-Ray Center

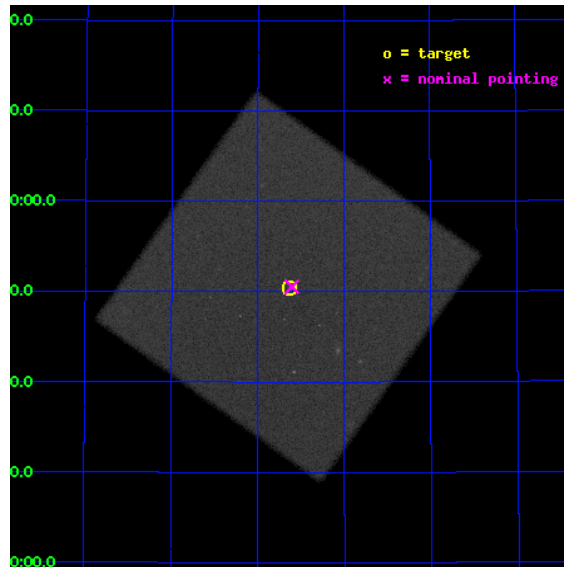
L2 Processing Date : Nov 11 2012

Contents

1	Front	2
2	OBI	3
2.1	OBI	3
2.1.1	Images	3
2.1.2	Parameters	4
2.1.3	Events	4
2.2	Compared Parameters	5
2.3	Aspect	6
2.4	Star Slots	9
2.4.1	Slot 3	9
2.4.2	Slot 4	10
2.4.3	Slot 5	11
2.4.4	Slot 6	12
2.4.5	Slot 7	13
2.5	FID Slots	14
2.5.1	Slot 0	14
2.5.2	Slot 1	15
2.5.3	Slot 2	16
A	Summary	17
A.1	Status	17
A.2	Comments	17

1 Front

seq_num	700934	Sequence number
obs_id	4852	Observation id
title	EXTENDED EMISSION AND ACCRETION RATES IN BL LACERTAE OBJECTS	Propo
observer	Dr. Rita Sambruna	Principal investigator
object	1ES 0927+500	Source name
ra_targ	142.656667	Observer's specified target RA [deg]
dec_targ	49.840417	Observer's specified target Dec [deg]
ra_nom	142.65118713224	Nominal RA [deg]
dec_nom	49.842654130305	Nominal Dec [deg]
roll_nom	170.56665781096	Nominal Roll [deg]
revision	4	Processing version of data
ontime	19871.932118624	[s]
livetime	19758.364592519	Ontime multiplied by DTCOR
l2events	641561	Number of level 2 events

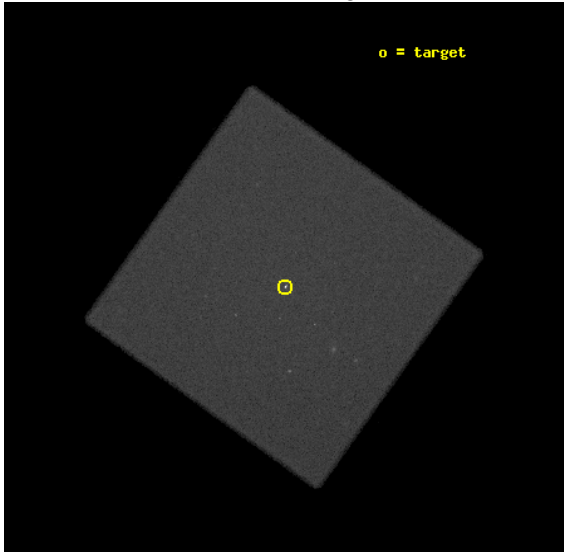


2 OBI

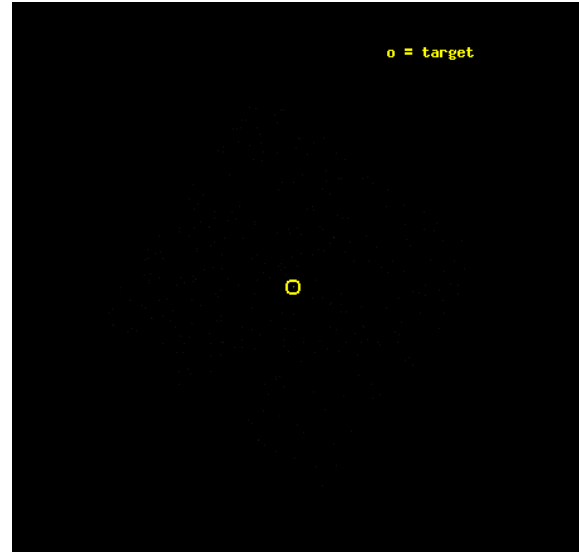
2.1 OBI

2.1.1 Images

Level 1 Image



Level 1 Bad Events



2.1.2 Parameters

obi_num	0	Obi number	sched_exp_time	20000.000000	[s] Scheduled observation exposure time
ascdsver	8.4.5	Processing system revision	ontime	19871.932118624	[s]
caldbver	4.5.2	 	l1events	932696	Number of level 1 events
date	2012-11-11T16:55:44	Date and time of file creation			
revision	4	Processing version of data			

2.1.3 Events

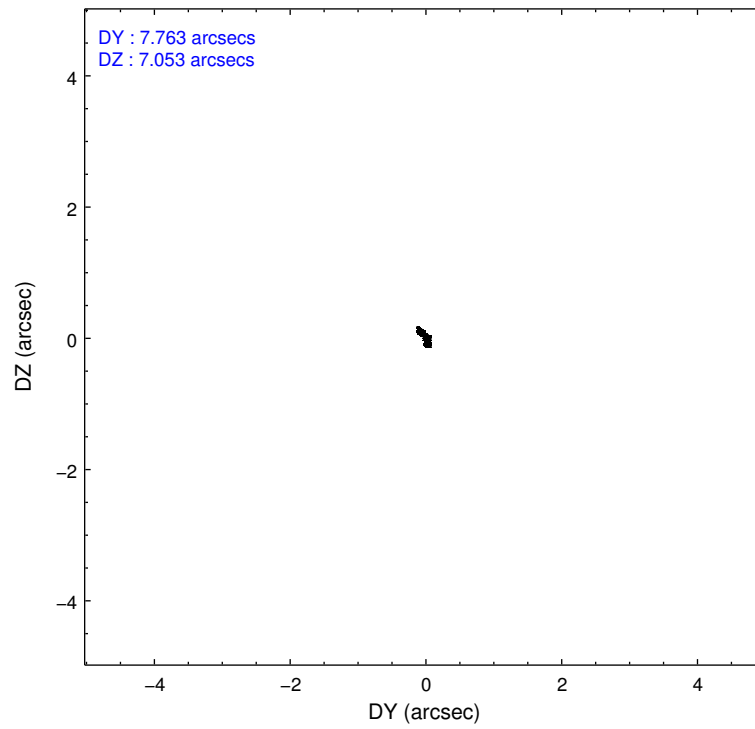
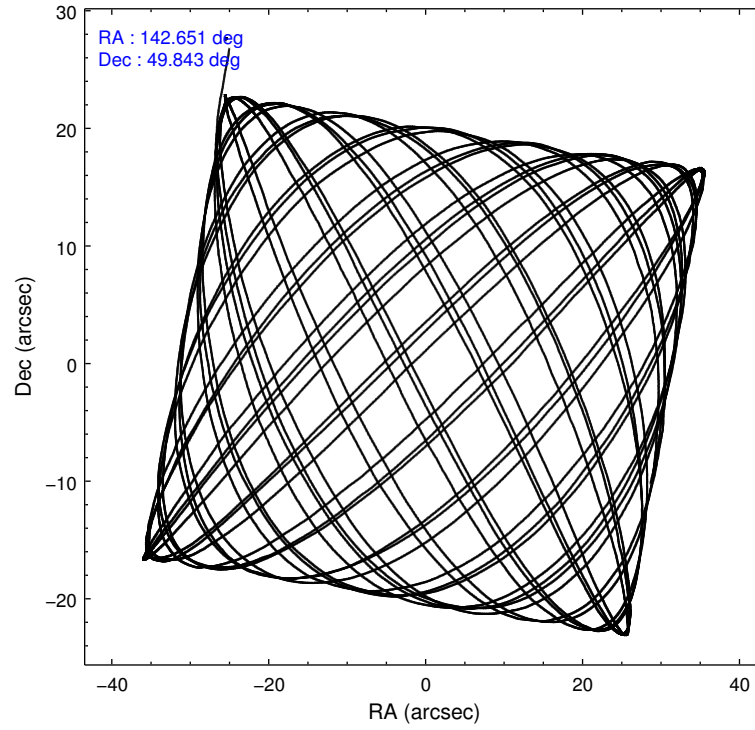
Level 1 Events

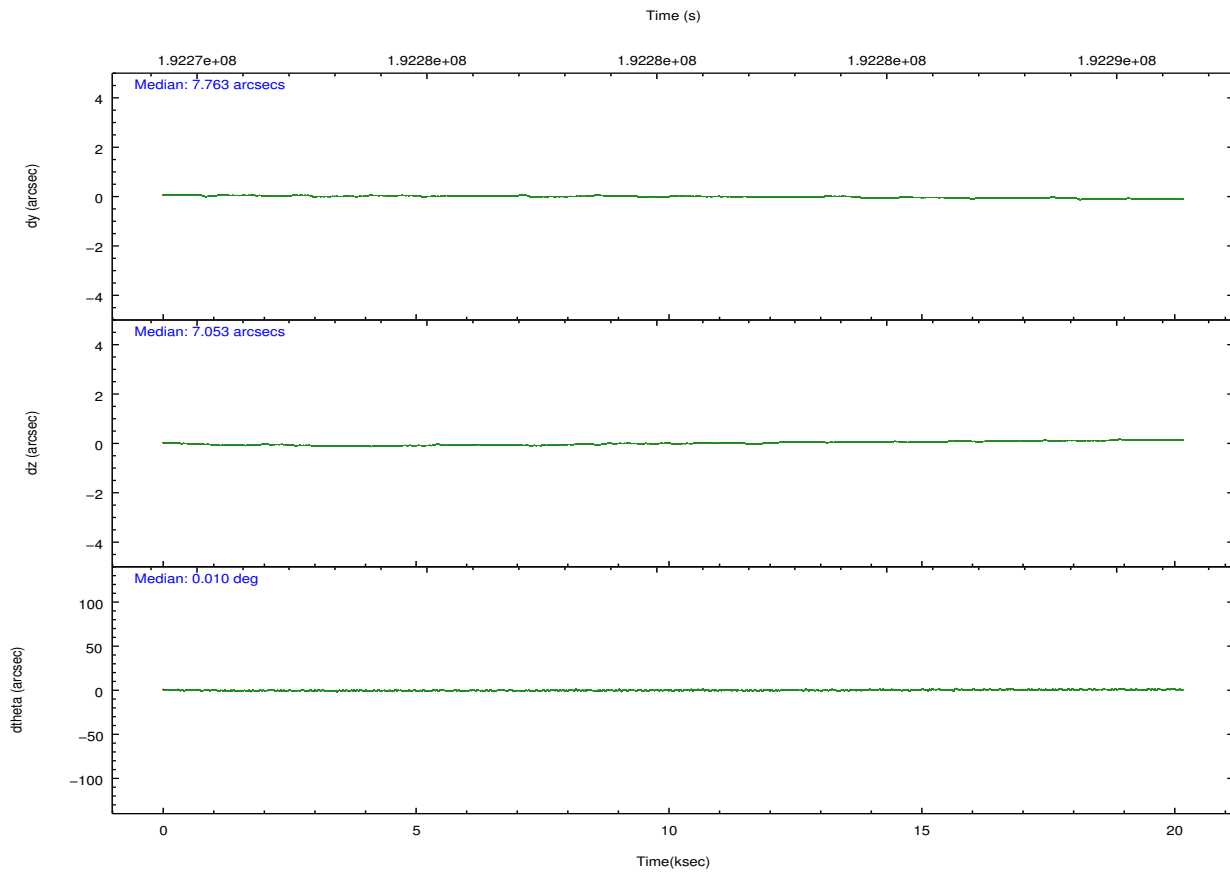
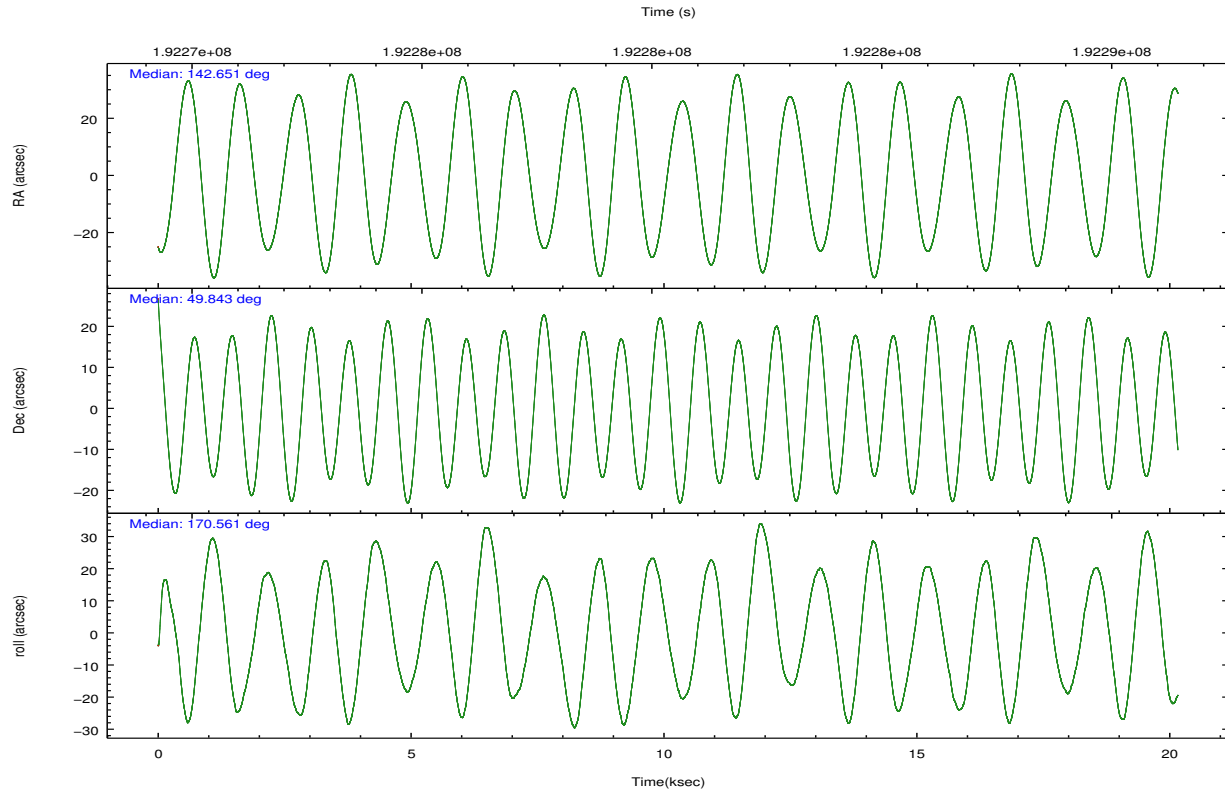
	segment 0
level 1 events	932696
rejected events	5757
rejected %	0%

2.2 Compared Parameters

Parameter	Planned	Actual	Parameter	Planned	Actual
Instrument	HRC	HRC	Obspar format version number	7	7
Detector	HRC-I	HRC-I	Obspar file type	PREDICTED	ACTUAL
Grating	NONE	NONE	Obspar update status	NONE	UPDATED
Data mode	OBSERVING	OBSERVING			
Observation mode	POINTING	POINTING			
[deg] Pointing RA	142.690190	142.6511871322443			
[deg] Pointing Dec	49.852741	49.84265413030532			
[deg] Pointing Roll	170.632348	170.5666578109557			
[mm] SIM focus pos	-1.040293	-1.038866356238299			
[mm] SIM defocus	0	0.001426264420575141			
[mm] SIM translation stage pos	126.985494	126.9829799899862			
[mm] SIM translation stage offset	0	0.002508901615314585			
[s] Observation start time (MET)	192270434.184000	192269596.96483			
Observation start date	2004-02-04T08:26:10	2004-02-04T08:13:16			
[s] Observation end time (MET)	192290434.184000	192291289.55328			
Observation end date	2004-02-04T13:59:30	2004-02-04T14:14:49			

2.3 Aspect



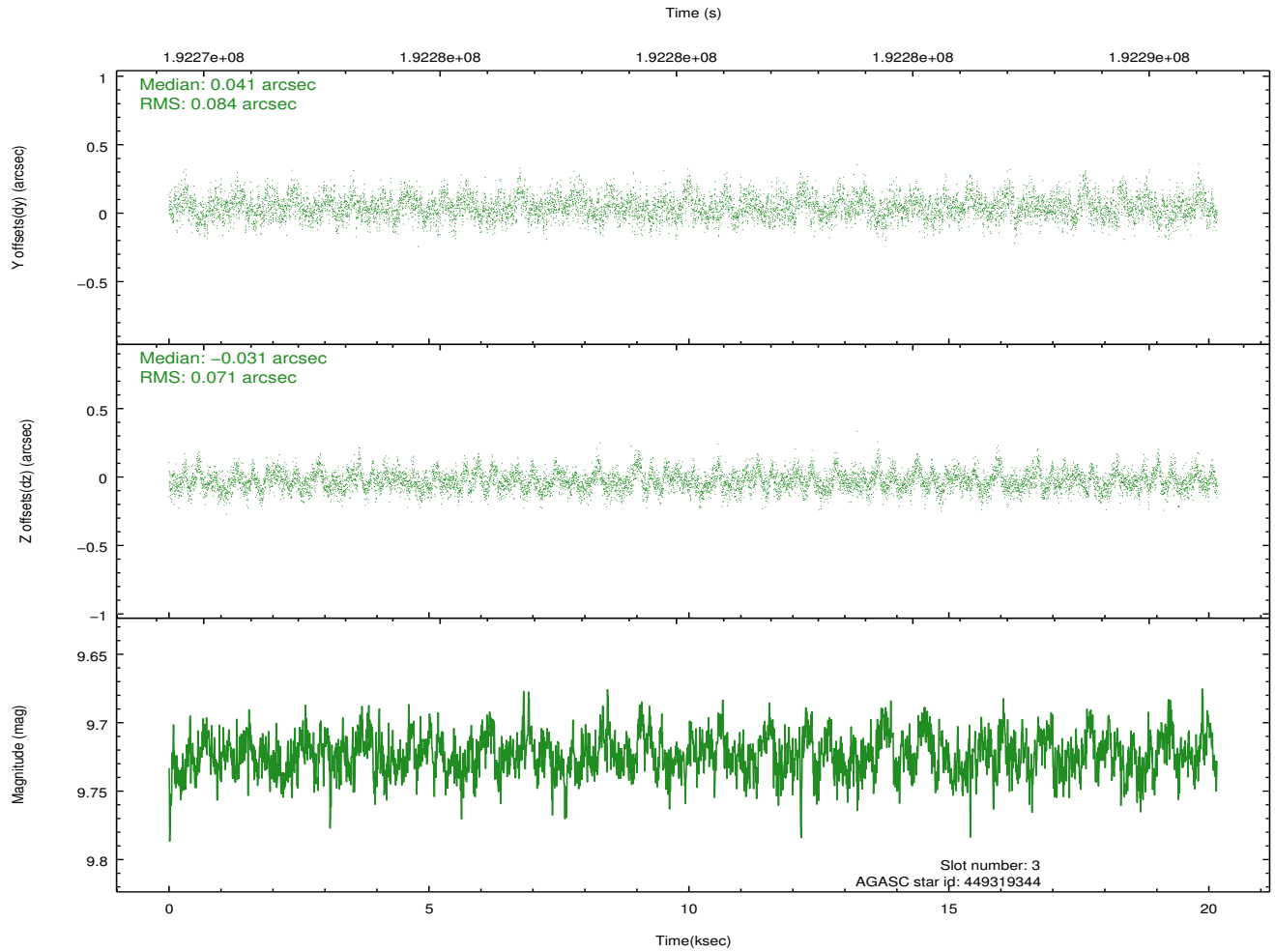
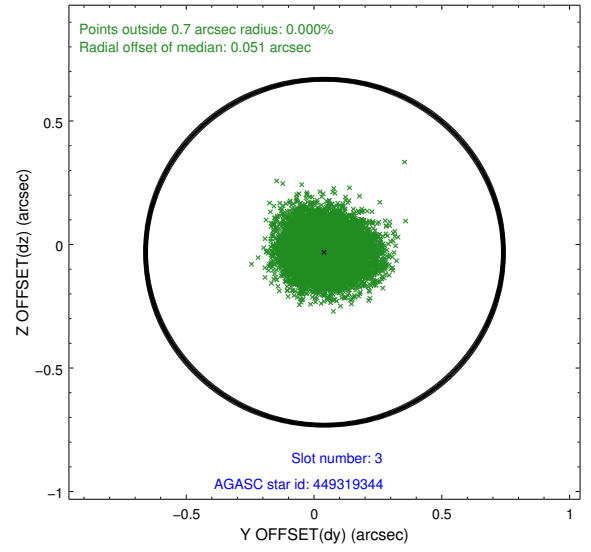
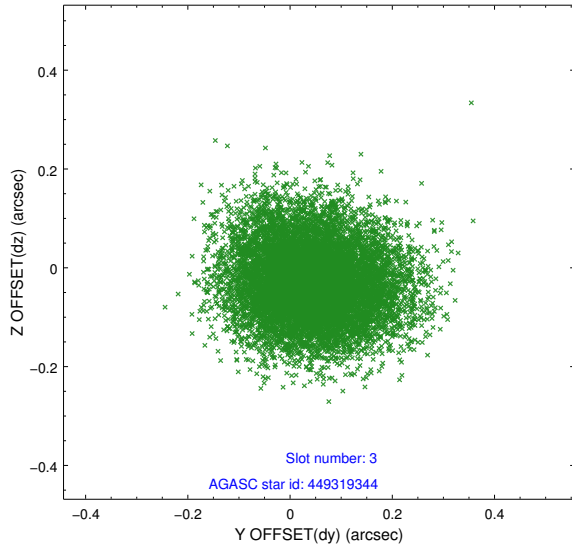


Slot Statistics

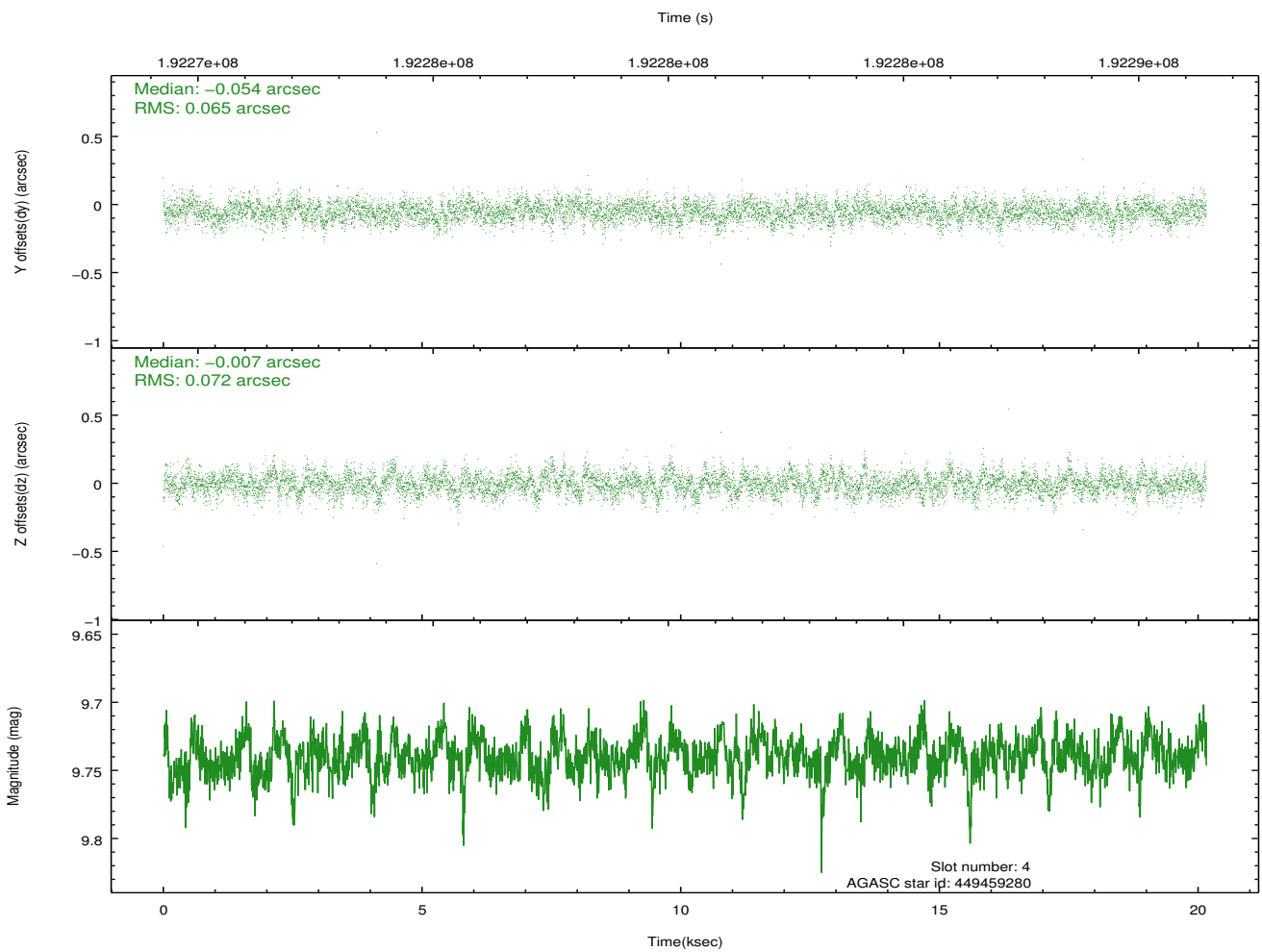
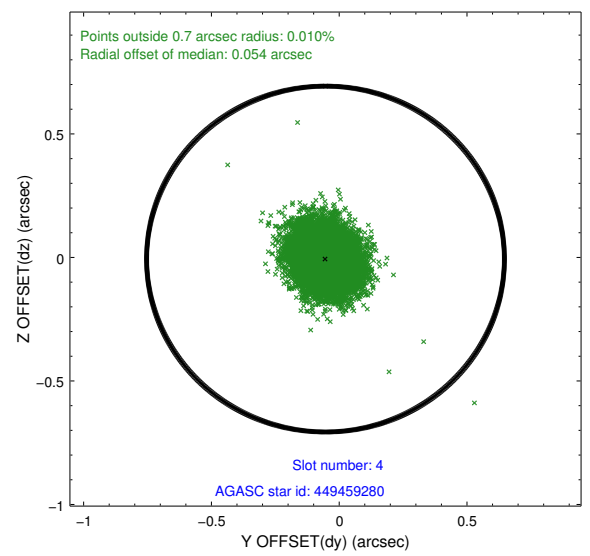
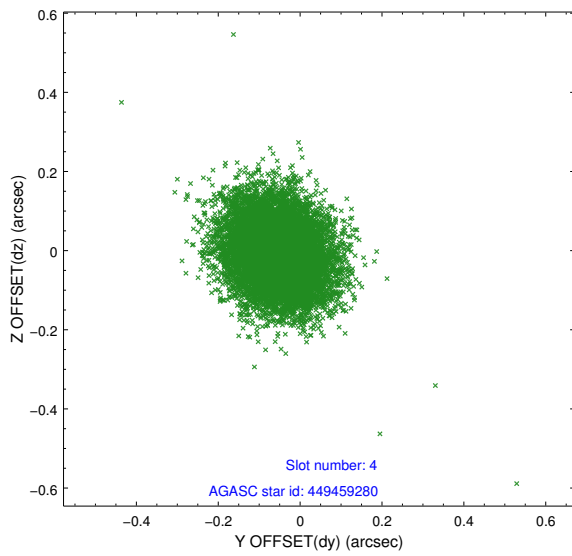
slot	status	id	mag	n_pts	med_dy	med_dz	dr1	dr2	ra	dec	mean_y	mean_z
0	FID	HRC-I-2	7.00	4918	0.086	-0.040	0.006	0.011	0.000000	0.000000	849.33	-1296.53
1	FID	HRC-I-3	7.06	4918	-0.064	0.016	0.006	0.009	0.000000	0.000000	-1191.72	1009.43
2	FID	HRC-I-4	6.99	4918	0.097	-0.062	0.006	0.010	0.000000	0.000000	1279.31	1007.38
3	GUIDE	449319344	9.72	9824	0.041	-0.031	0.118	0.191	141.844786	49.445107	1715.58	1759.43
4	GUIDE	449459280	9.74	9828	-0.054	-0.007	0.102	0.168	142.612767	49.715358	97.67	517.88
5	GUIDE	449840520	9.43	9827	0.022	0.005	0.101	0.171	142.853778	50.248225	-139.41	-1466.07
6	GUIDE	449840872	9.37	9833	-0.034	-0.028	0.097	0.157	143.180580	50.144666	-944.22	-1224.73
7	GUIDE	449708184	9.05	9831	0.024	0.061	0.083	0.140	142.229315	50.059153	1172.76	-562.73

2.4 Star Slots

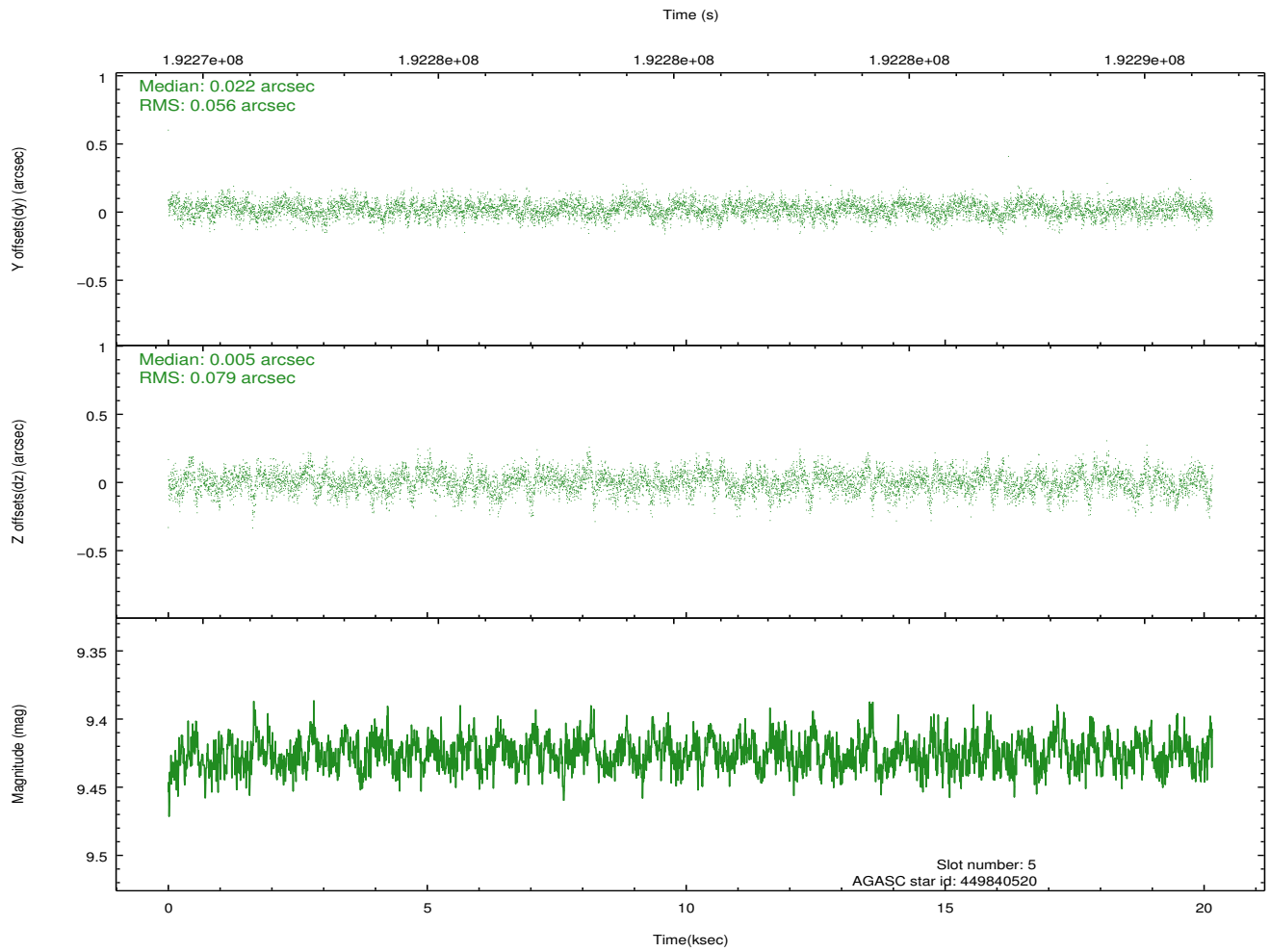
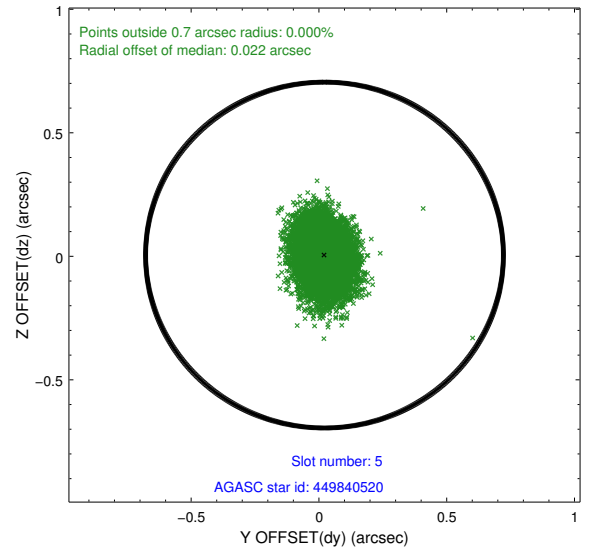
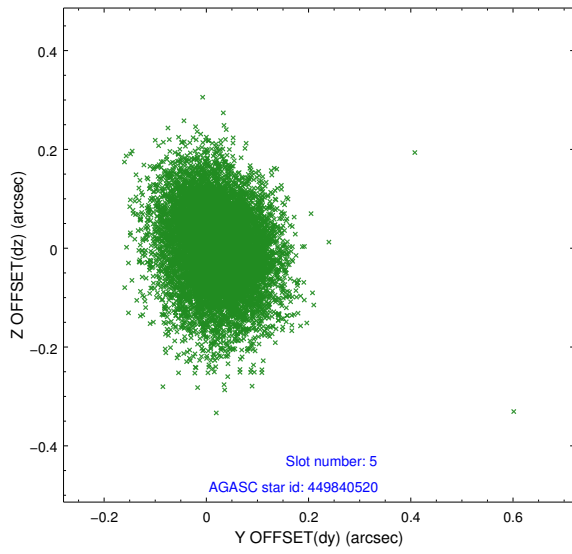
2.4.1 Slot 3



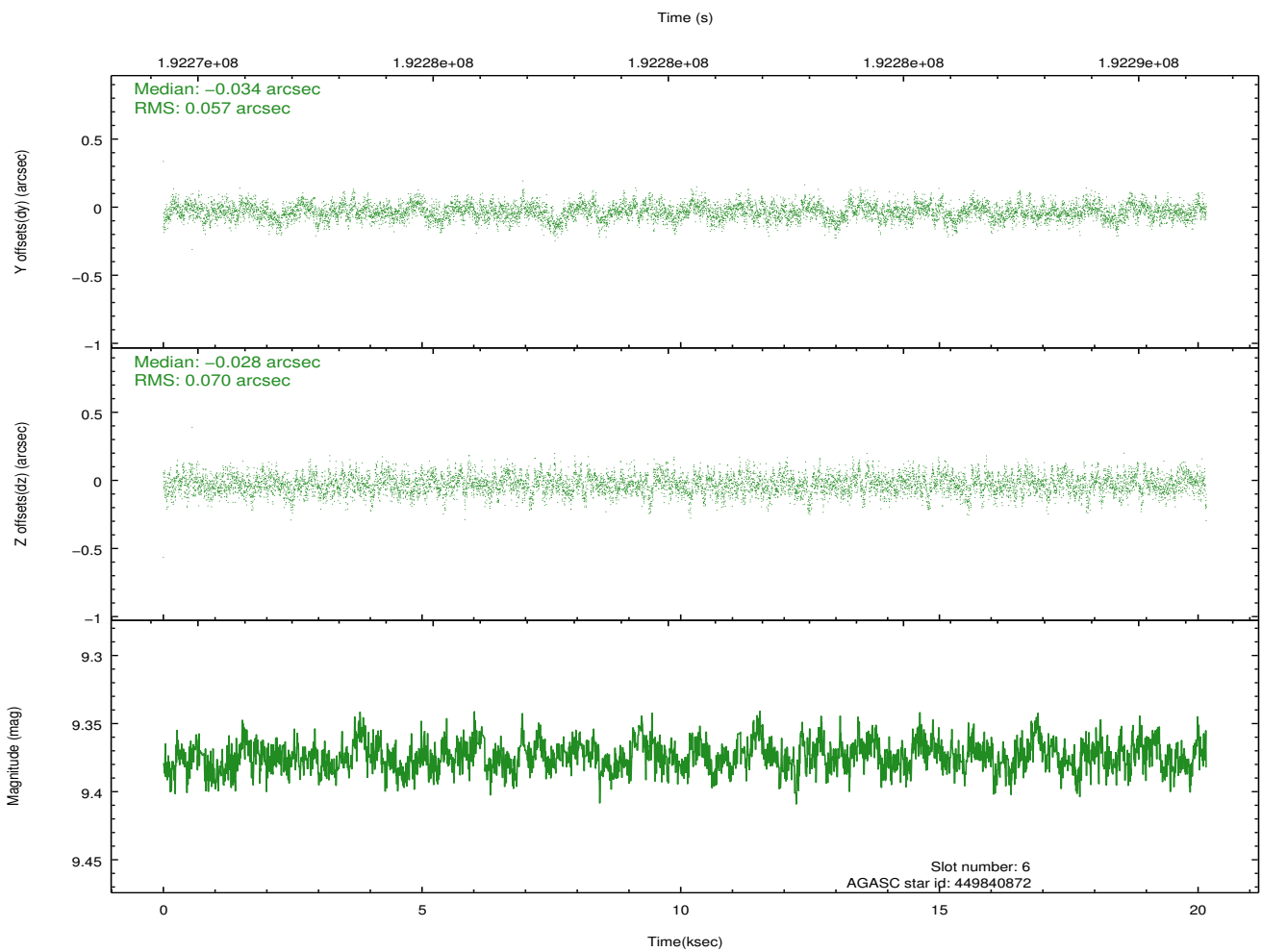
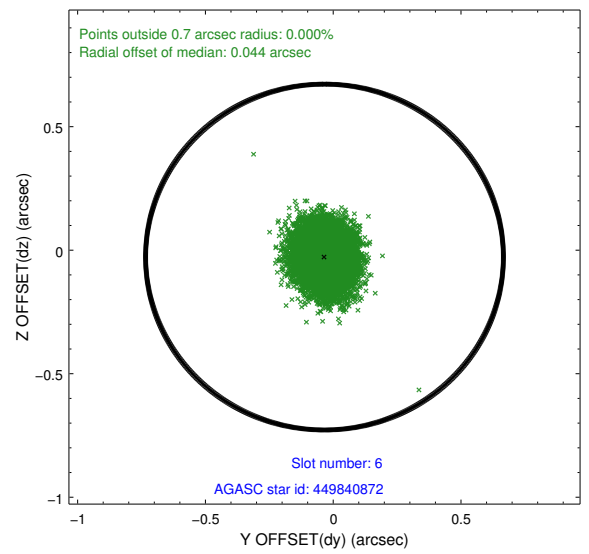
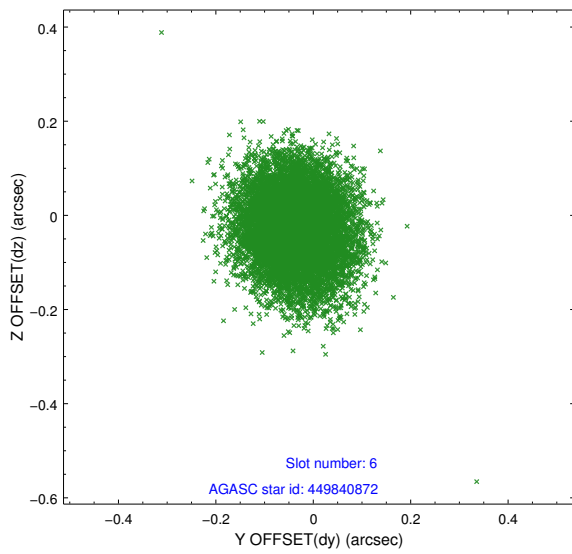
2.4.2 Slot 4



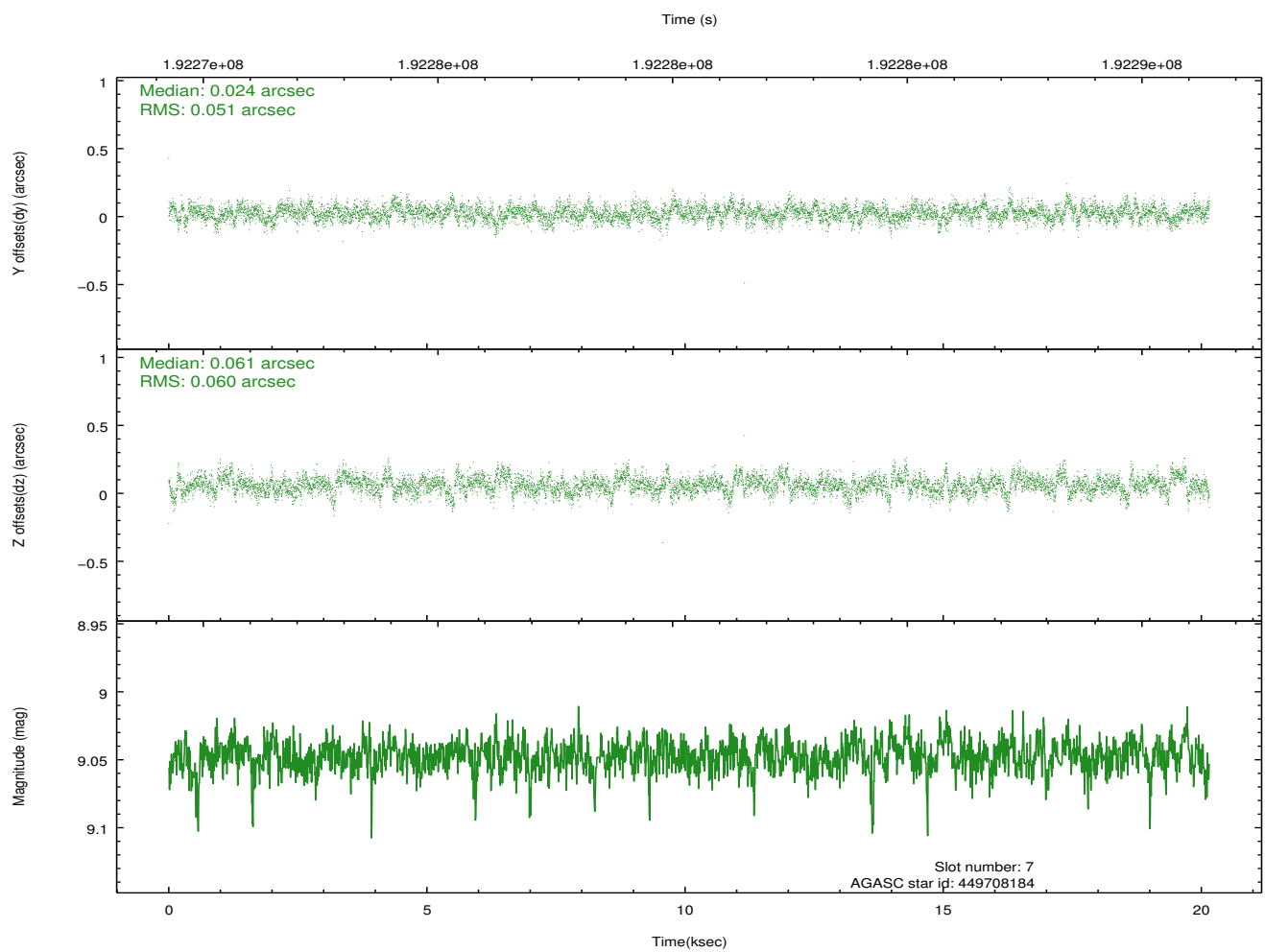
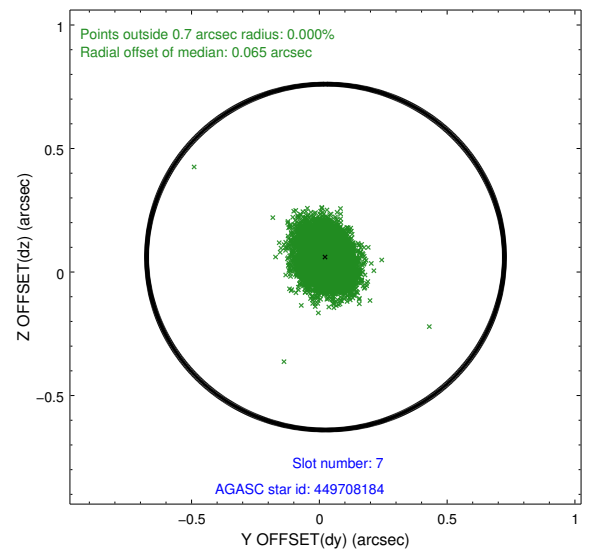
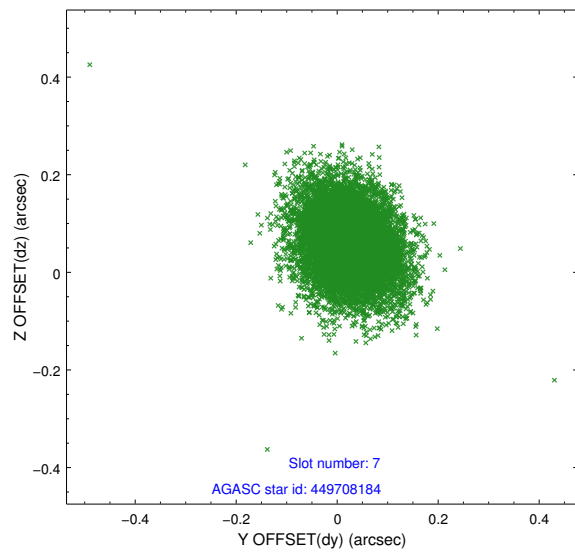
2.4.3 Slot 5



2.4.4 Slot 6

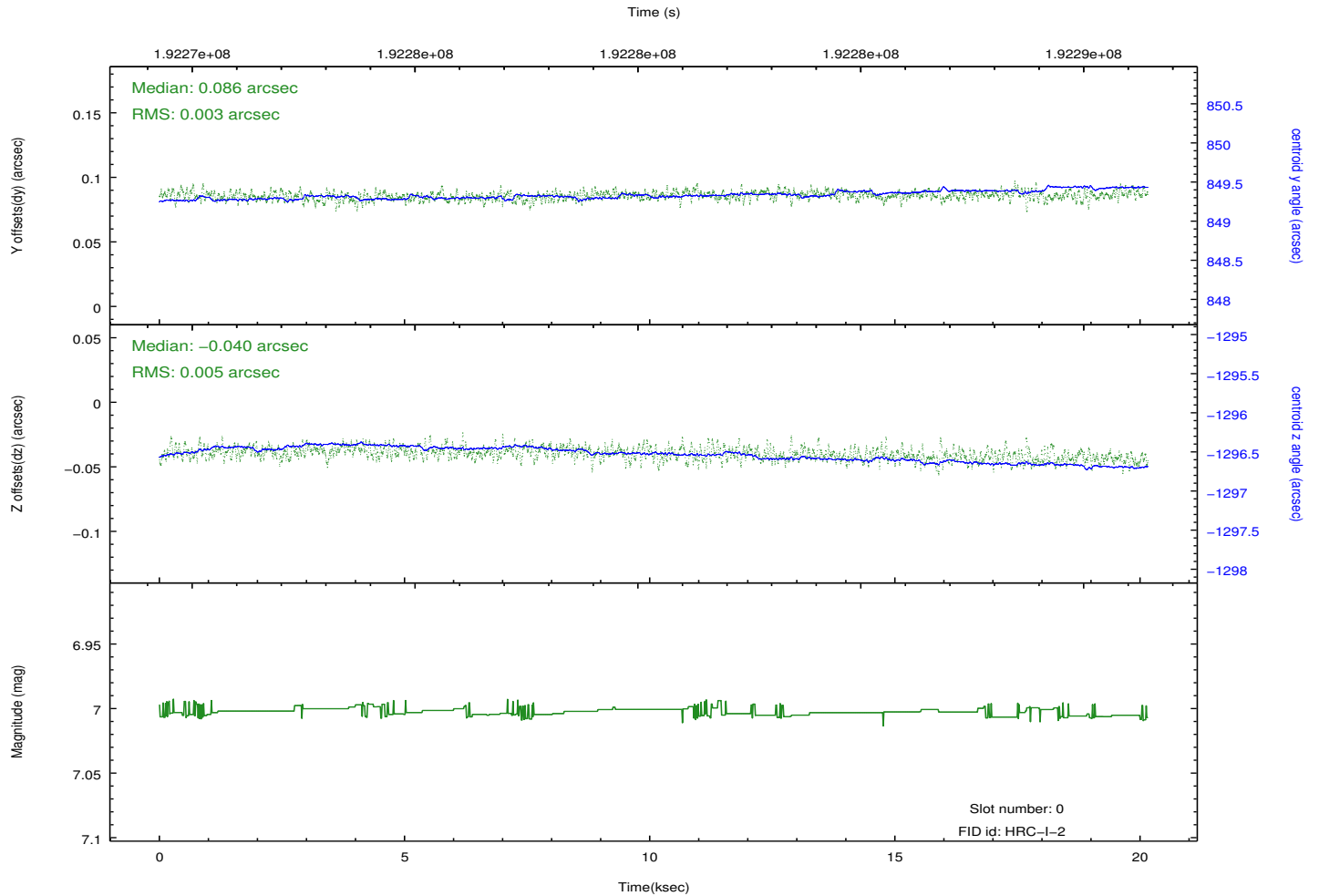
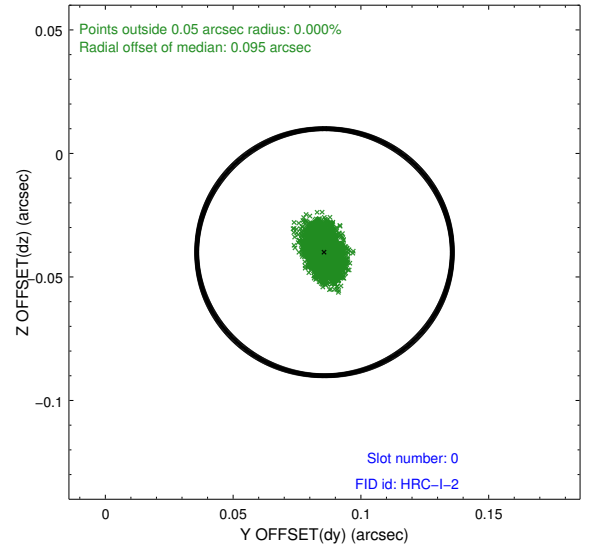
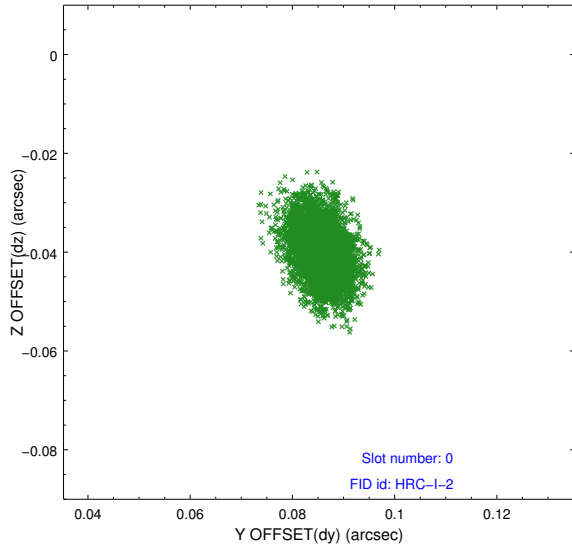


2.4.5 Slot 7

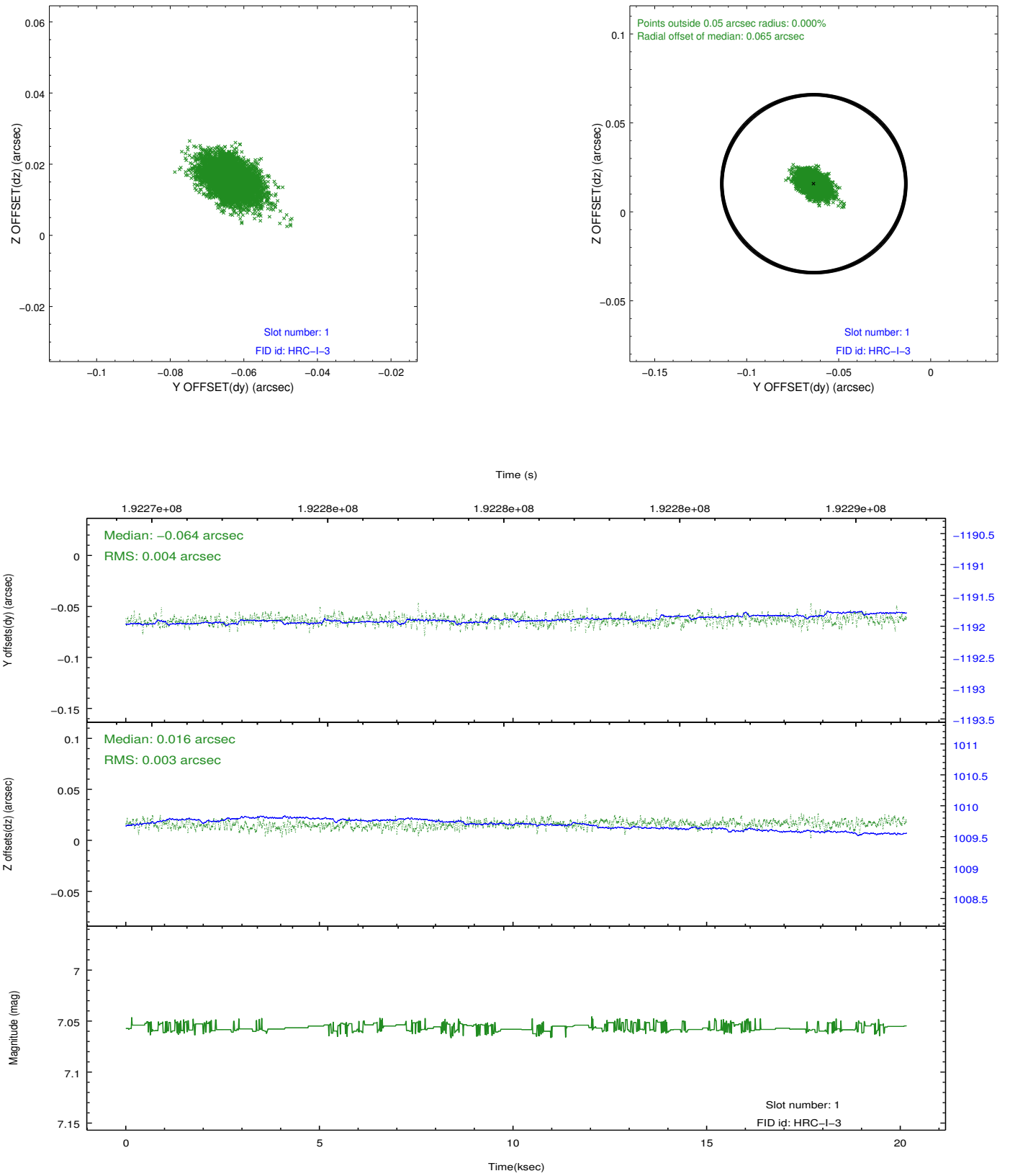


2.5 FID Slots

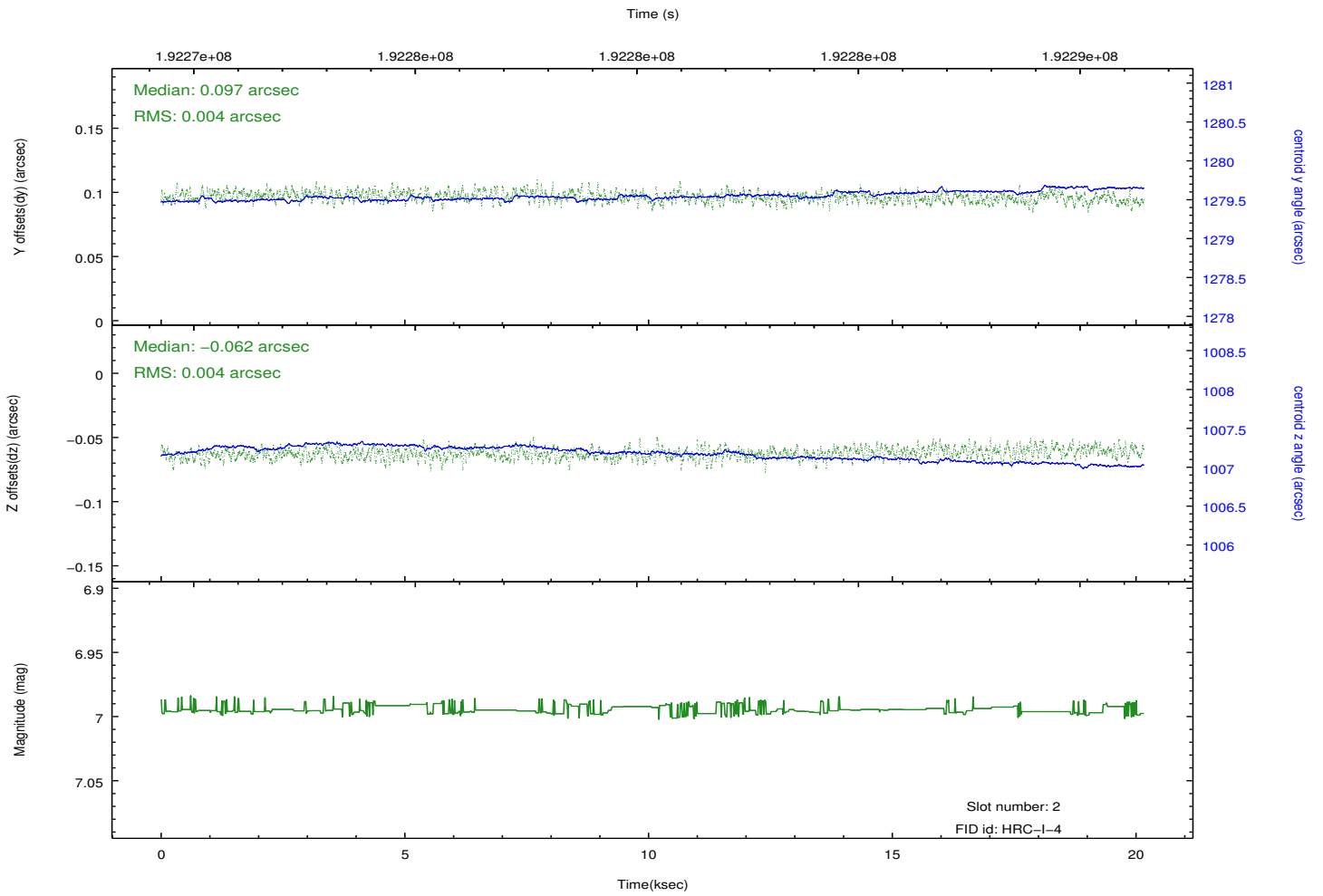
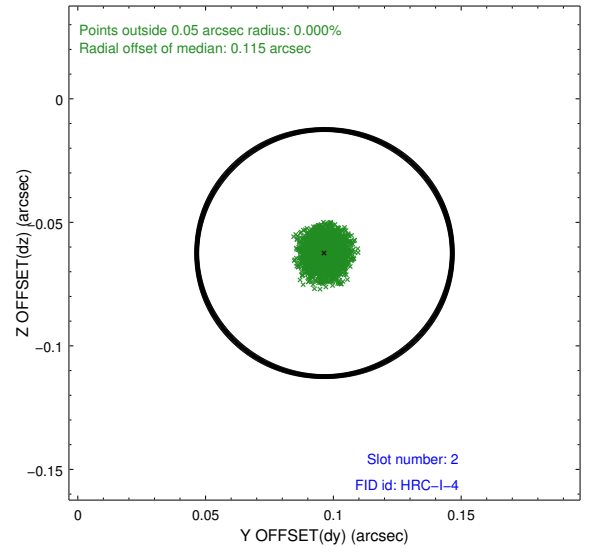
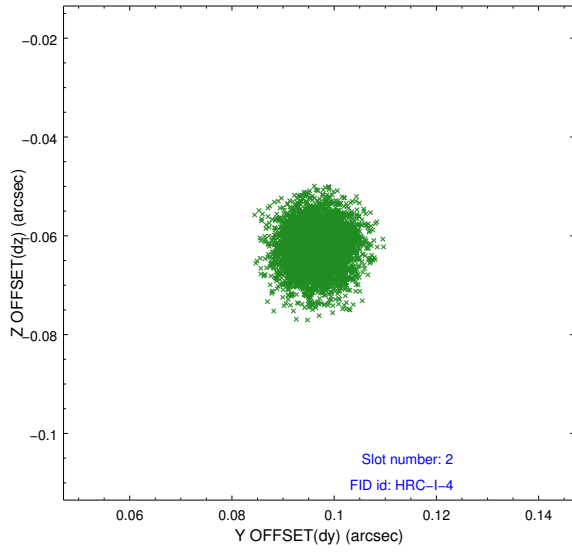
2.5.1 Slot 0



2.5.2 Slot 1



2.5.3 Slot 2



A Summary

A.1 Status

V&V Scientist	Jen Lauer
V&V Date (YYYY-MM-DD)	2012.12.11
V&V Edition	1
V&V Disposition and Status	OK
V&V Charge Time	19.871

A.2 Comments