

V&V Reference Report

L2 ASCDS Version : 8.5

Observation 4962 - L2 Version 3
Chandra X-Ray Center

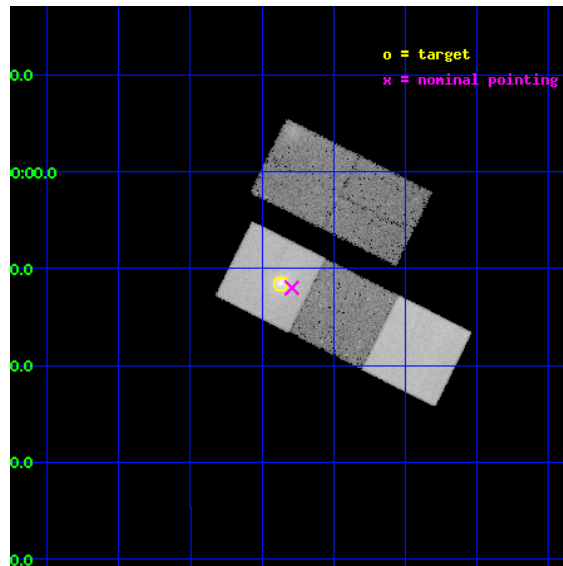
L2 Processing Date : Dec 8 2012

Contents

1	Front	2
2	OBI	3
2.1	OBI	3
2.1.1	Images	3
2.1.2	Bias	3
2.1.3	Parameters	4
2.1.4	Events	4
2.2	Compared Parameters	5
2.3	Aspect	6
2.4	Star Slots	9
2.4.1	Slot 3	9
2.4.2	Slot 4	10
2.4.3	Slot 5	11
2.4.4	Slot 6	12
2.4.5	Slot 7	13
2.5	FID Slots	14
2.5.1	Slot 0	14
2.5.2	Slot 1	15
2.5.3	Slot 2	16
A	Summary	17
A.1	Status	17
A.2	Comments	17

1 Front

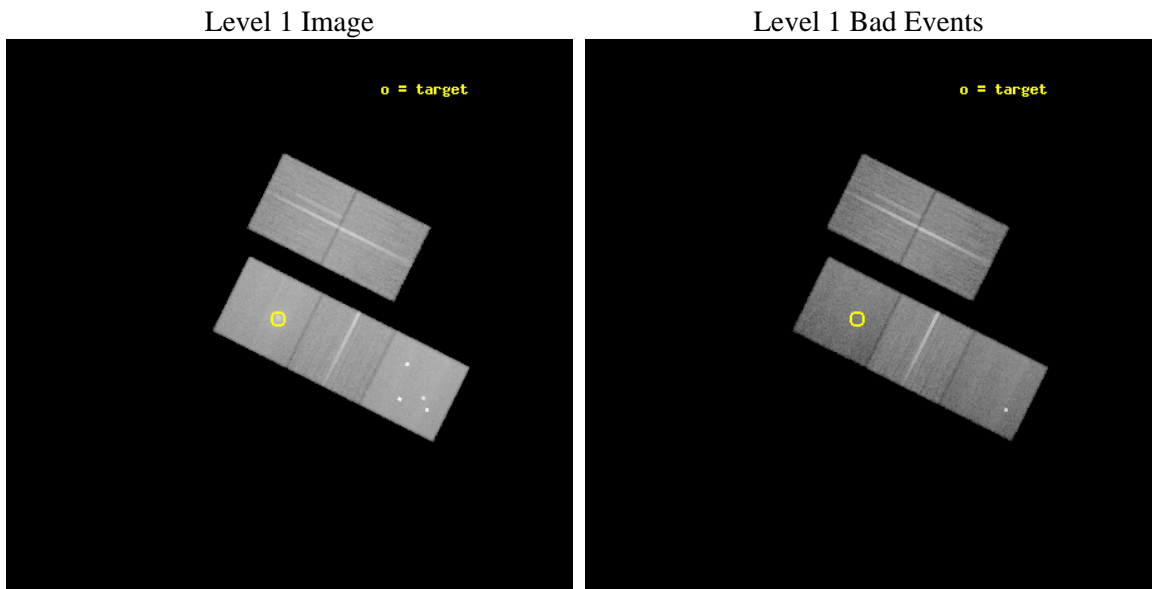
seq_num	800408	Sequence number
obs_id	4962	Observation id
title	A Chandra Study of the relaxed lensing cluster Abell 2537	Proposal
observer	Prof. Steven Allen	Principal investigator
object	Abell 2537	Source name
dtcycle	0	
cycle	P	events from which exps? Prim/Second/Both
ra_targ	347.092083	Observer's specified target RA [deg]
dec_targ	-2.192222	Observer's specified target Dec [deg]
ra_nom	347.07277338869	Nominal RA [deg]
dec_nom	-2.1999162657135	Nominal Dec [deg]
roll_nom	206.48552375555	Nominal Roll [deg]
revision	3	Processing version of data
ontime	36672.999929458	Sum of GTIs [s]
livetime	36193.84018711	Livetime [s]
ontime2	36666.717968971	Sum of GTIs [s]
ontime3	36663.577008665	Sum of GTIs [s]
ontime5	36672.999929458	Sum of GTIs [s]
ontime6	36666.717978954	Sum of GTIs [s]
ontime7	36672.999929458	Sum of GTIs [s]
l2events	331773	Number of level 2 events



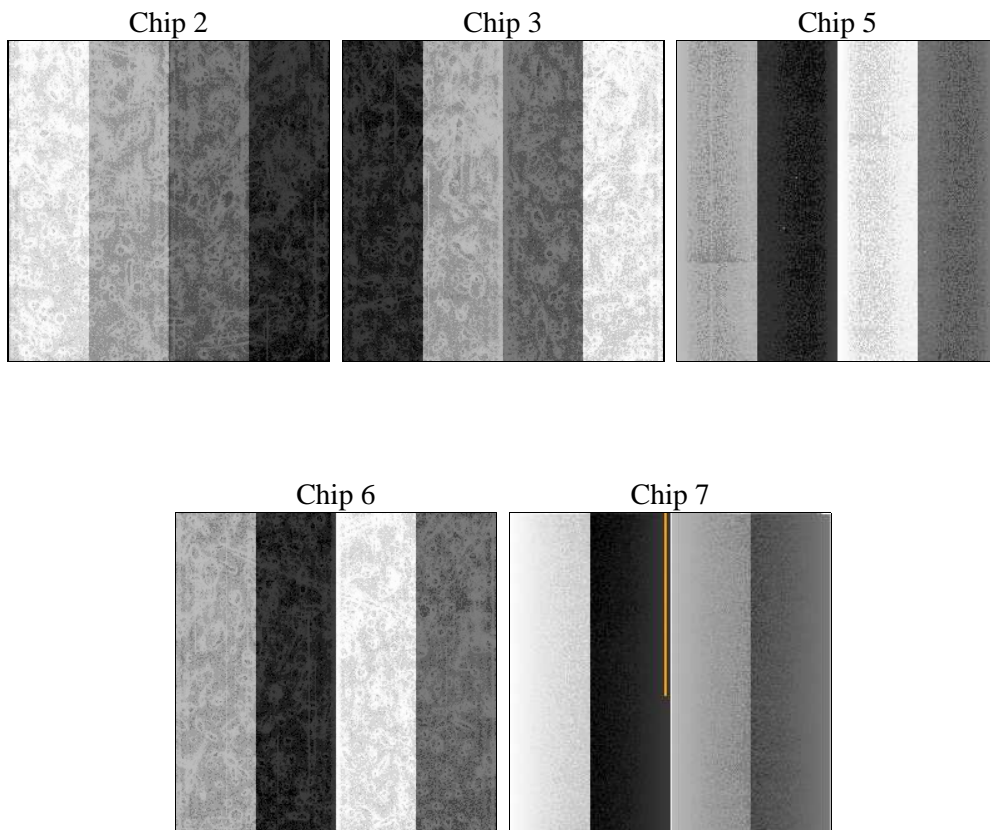
2 OBI

2.1 OBI

2.1.1 Images



2.1.2 Bias



2.1.3 Parameters

obi_num	0	Obi number	sched_exp_time	36500.000000	[s] Scheduled observation exposure time
ascdsver	8.5	Processing system revision	ontime	36672.999929458	Sum of GTIs [s]
caldsver	4.5.4	 	ontime2	36666.717968971	Sum of GTIs [s]
date	2012-12-08T23:45:19	Date and time of file creation	ontime3	36663.577008665	Sum of GTIs [s]
revision	3	Processing version of data	ontime5	36672.999929458	Sum of GTIs [s]
			ontime6	36666.717978954	Sum of GTIs [s]
			ontime7	36672.999929458	Sum of GTIs [s]
			l1events	1365803	Number of level 1 events

2.1.4 Events

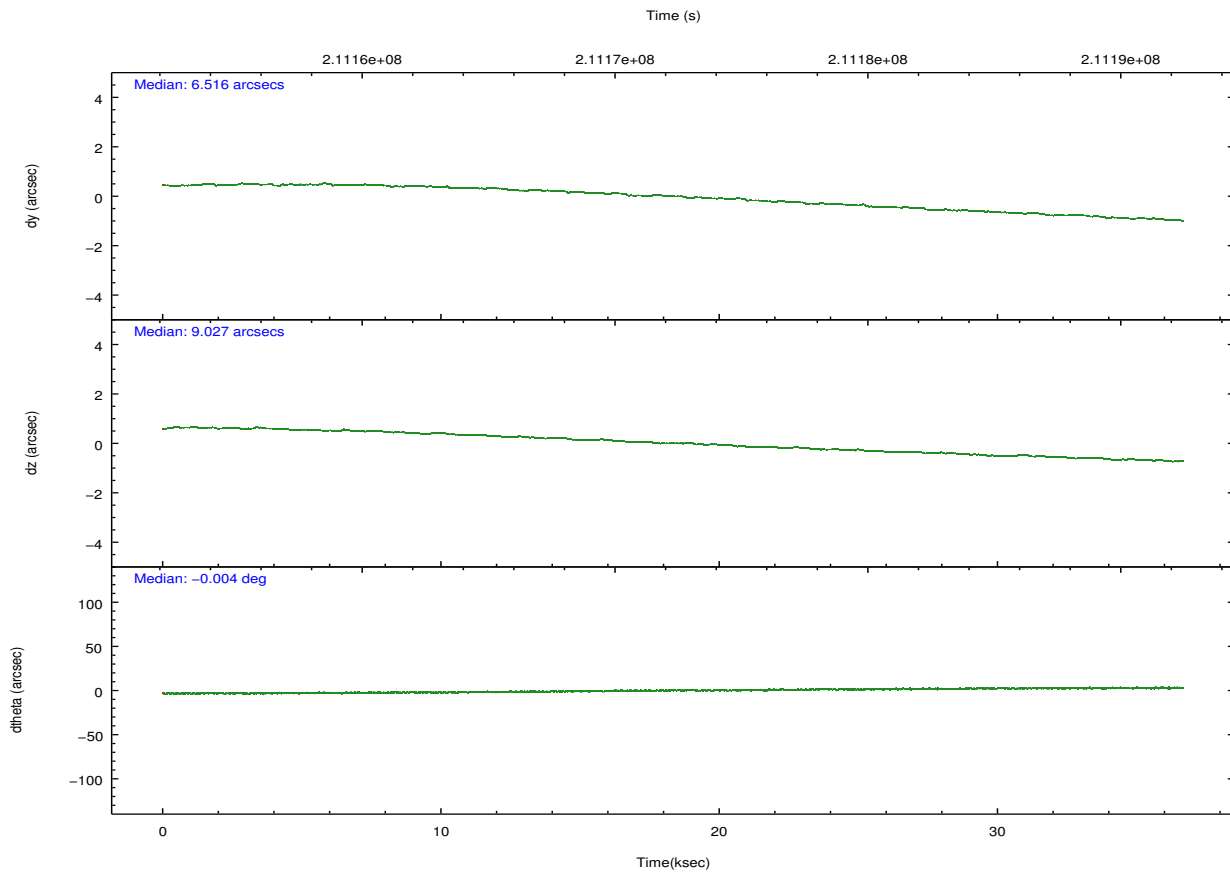
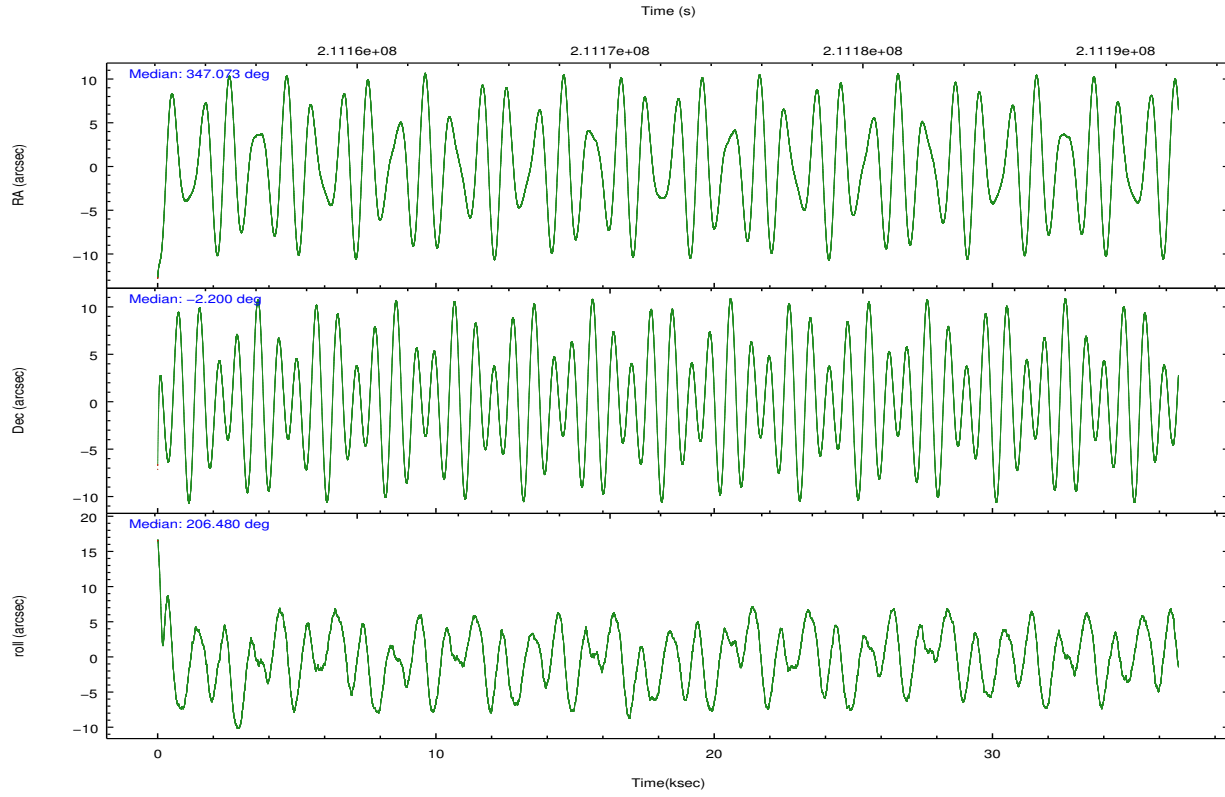
	ccd 2	ccd 3	ccd 5	ccd 6	ccd 7
level 1 events	246982	241784	345457	246734	284846
rejected events	225435	218794	173578	222349	150629
rejected %	91%	90%	50%	90%	52%

	ccd 2	ccd 3	ccd 5	ccd 6	ccd 7
grade 0 events	7819	9077	31816	8788	15771
	3%	3%	9%	3%	5%
grade 1 events	112	108	295	105	237
	0%	0%	0%	0%	0%
grade 2 events	5040	4831	48215	5289	28608
	2%	1%	13%	2%	10%
grade 3 events	2634	2688	6418	2770	13462
	1%	1%	1%	1%	4%
grade 4 events	2628	2692	6020	2885	13273
	1%	1%	1%	1%	4%
grade 5 events	7754	9054	25245	9406	28102
	3%	3%	7%	3%	9%
grade 6 events	4048	4377	84244	5395	66724
	1%	1%	24%	2%	23%
grade 7 events	216947	208957	143204	212096	118669
	87%	86%	41%	85%	41%

2.2 Compared Parameters

Parameter	Planned	Actual	Parameter	Planned	Actual
Instrument	ACIS	ACIS	Obspar format version number	7	7
Detector	ACIS-23567	ACIS-23567	Obspar file type	PREDICTED	ACTUAL
Grating	NONE	NONE	Obspar update status	NONE	UPDATED
Data mode	VFAINT	VFAINT	Number of optional ACIS chips dropped	0	0
Observation mode	POINTING	POINTING	On-chip summing requested	N	N
[deg] Pointing RA	347.087517	347.0727733886864	Subarray requested	NONE	NONE
[deg] Pointing Dec	-2.177005	-2.199916265713465	Alternating exposures requested	N	N
[deg] Pointing Roll	206.329457	206.4855237555505	[s] Primary exposure time	0.000000	3.1
[mm] SIM focus pos	-0.684267	-0.6828225247311905			
[mm] SIM defocus	0	0.001444936568705701			
[mm] SIM translation stage pos	-190.132523	-190.1400660498719			
[mm] SIM translation stage offset	0	0.00754346686406393			
[s] Observation start time (MET)	211154136.184000	211152590.59882			
Observation start date	2004-09-09T21:54:32	2004-09-09T21:29:50			
[s] Observation end time (MET)	211190636.184000	211192413.90059			
Observation end date	2004-09-10T08:02:52	2004-09-10T08:33:33			
Read mode	TIMED	TIMED			

2.3 Aspect

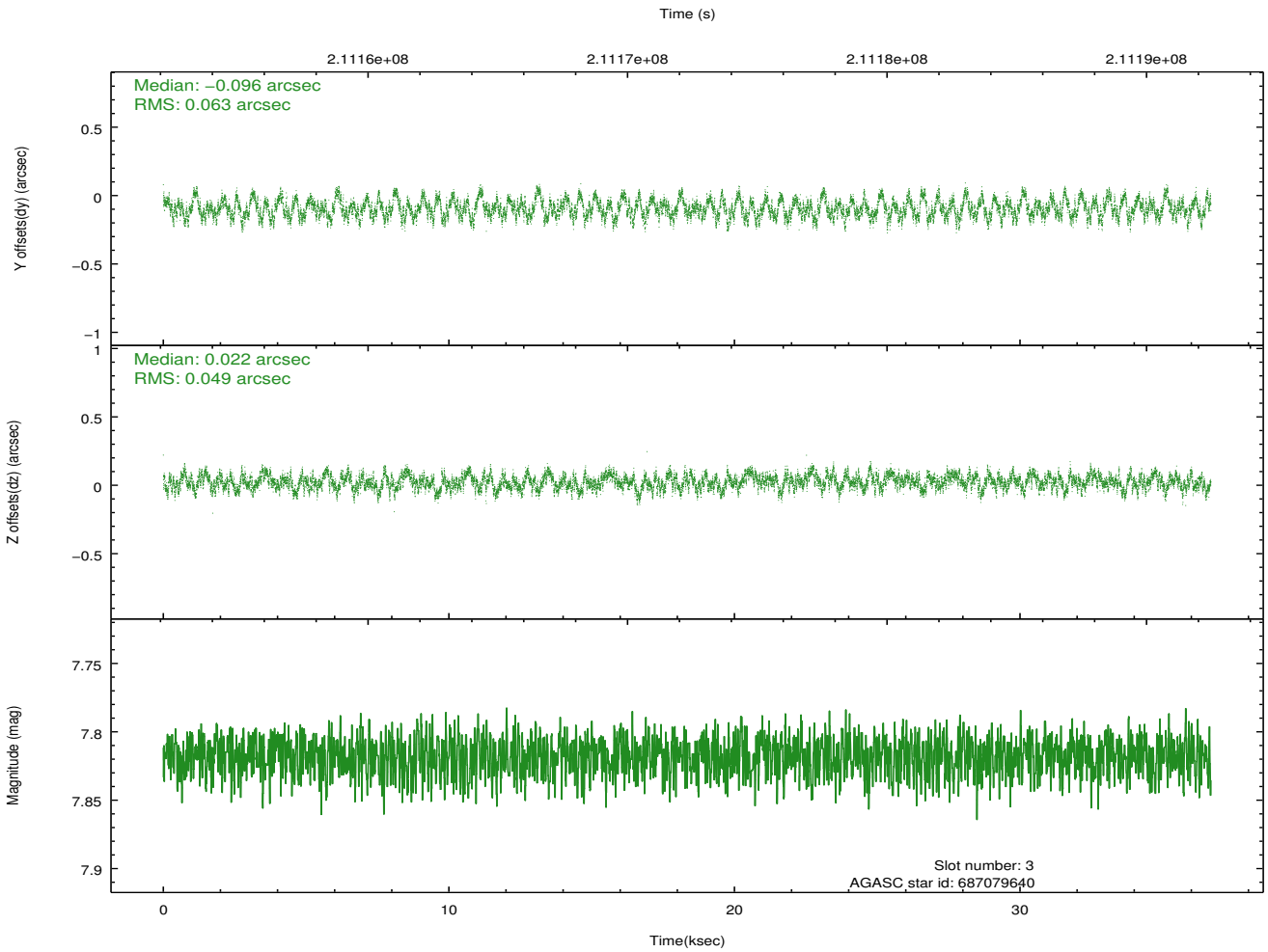
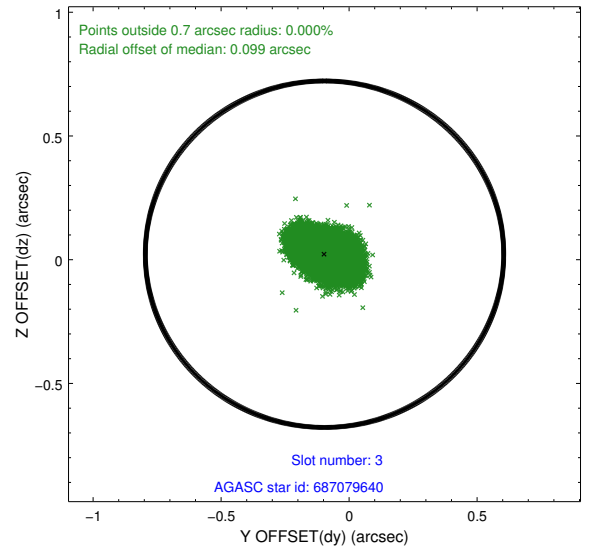
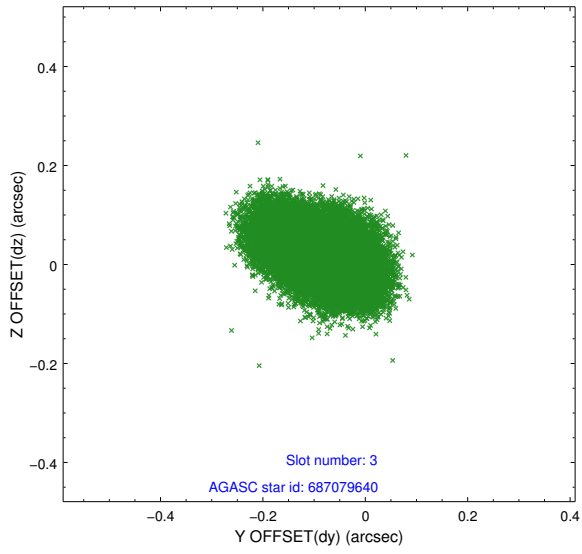


Slot Statistics

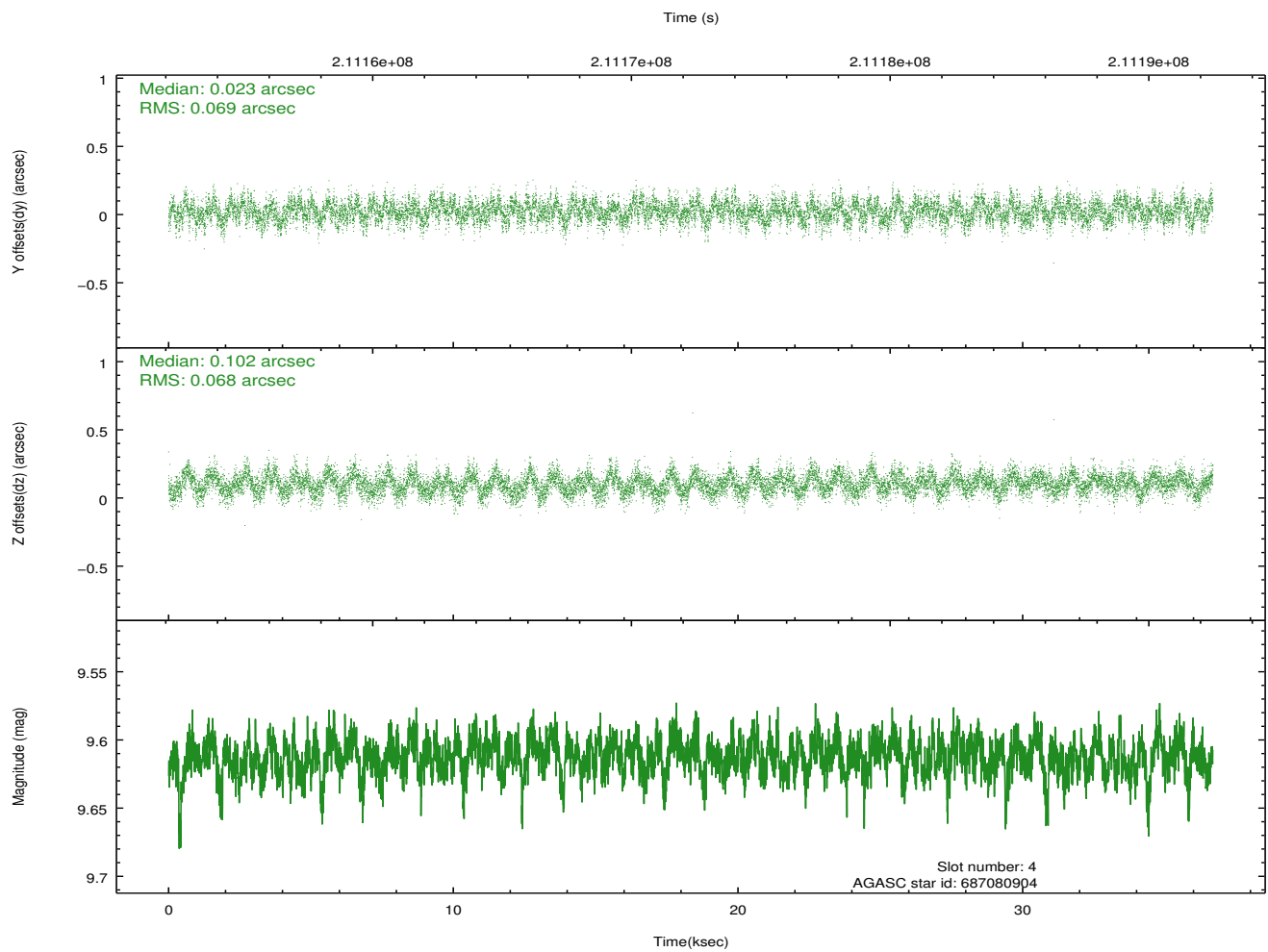
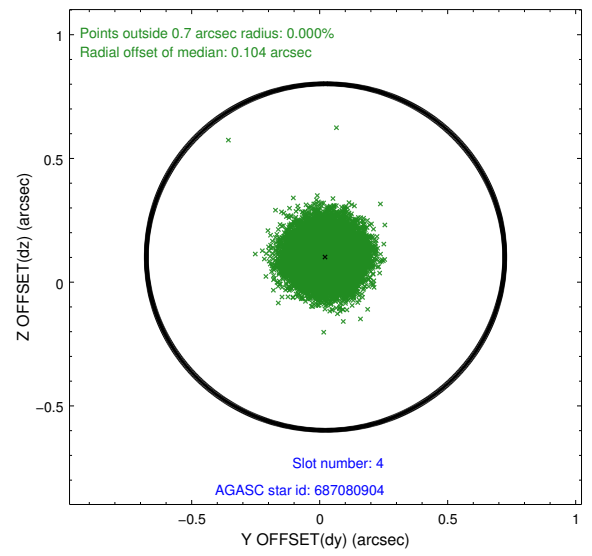
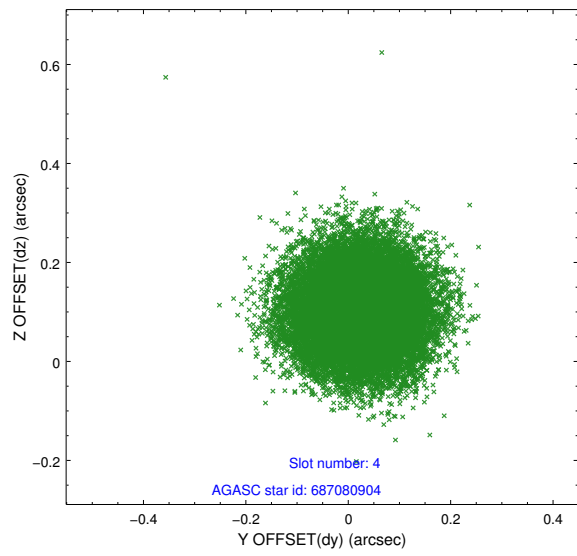
slot	status	id	mag	n_pts	med_dy	med_dz	dr1	dr2	ra	dec	mean_y	mean_z
0	FID	ACIS-S-2	7.10	8948	-0.046	-0.042	0.016	0.023	0.000000	0.000000	-759.21	-1730.30
1	FID	ACIS-S-4	7.21	8948	0.084	0.033	0.014	0.022	0.000000	0.000000	2154.18	178.24
2	FID	ACIS-S-5	7.23	8947	-0.070	0.018	0.014	0.020	0.000000	0.000000	-1812.04	171.92
3	GUIDE	687079640	7.82	17892	-0.096	0.022	0.087	0.138	347.267378	-2.452643	-139.67	1176.58
4	GUIDE	687080904	9.61	17877	0.023	0.102	0.105	0.164	347.082061	-2.473019	490.45	946.88
5	GUIDE	687082272	9.13	17884	0.027	0.029	0.085	0.135	346.918862	-2.105440	429.95	-499.56
6	GUIDE	687082408	10.26	17874	-0.022	-0.079	0.207	0.321	346.362100	-2.074282	2175.80	-1488.05
7	GUIDE	687211608	10.14	17868	0.069	-0.064	0.218	0.363	347.915332	-2.490272	-2167.04	2332.08

2.4 Star Slots

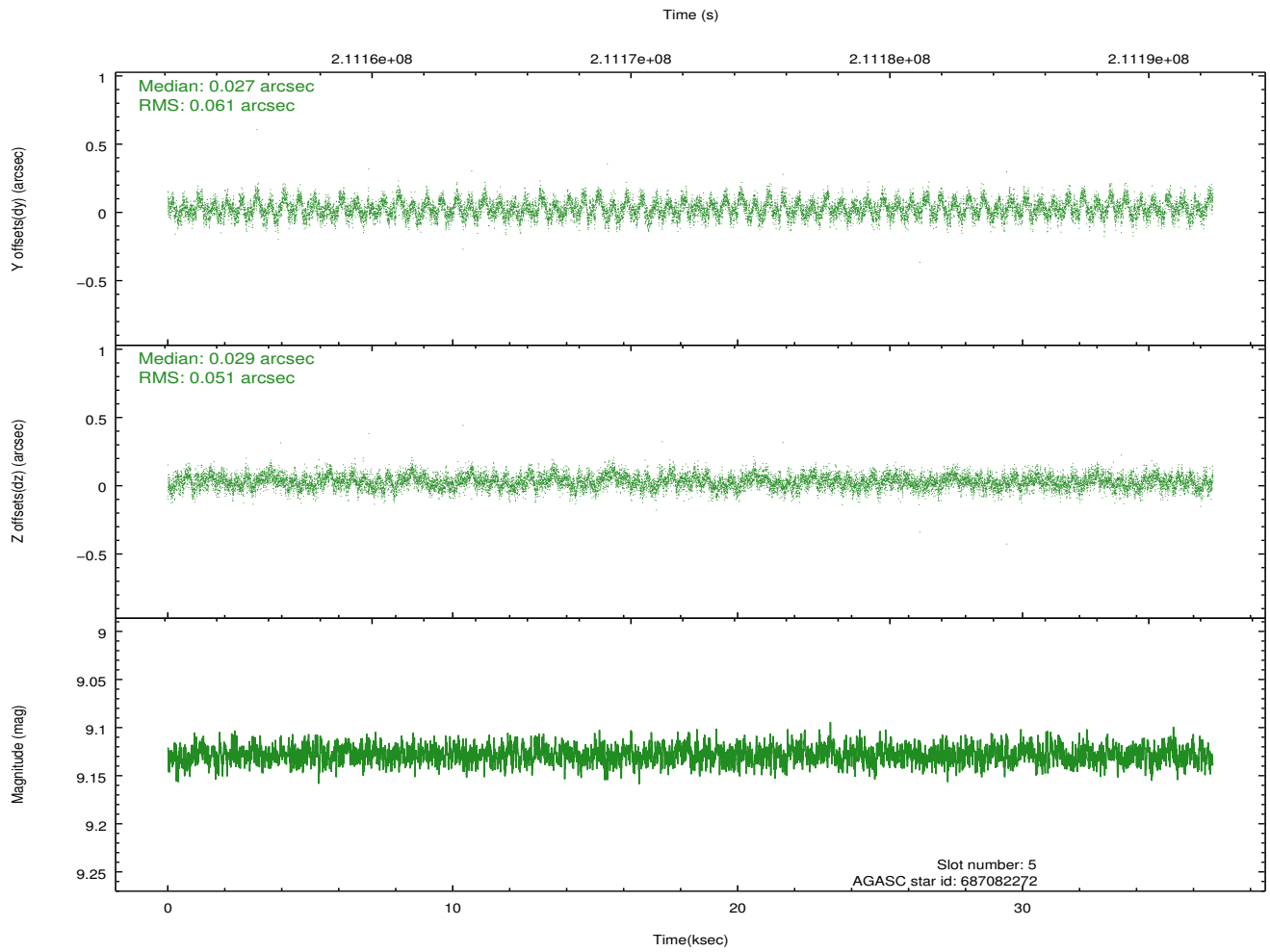
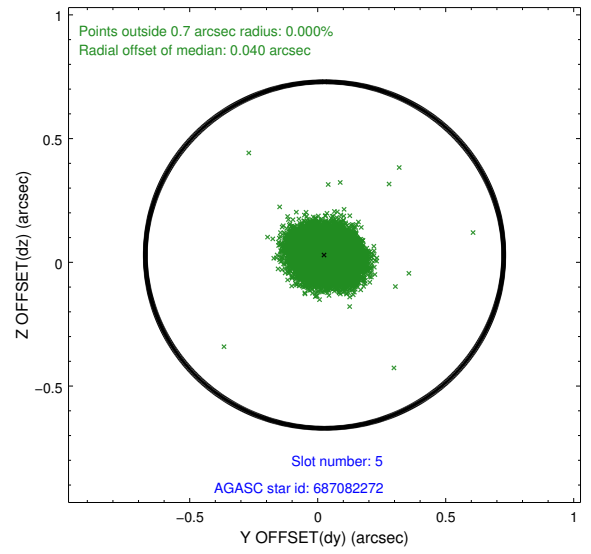
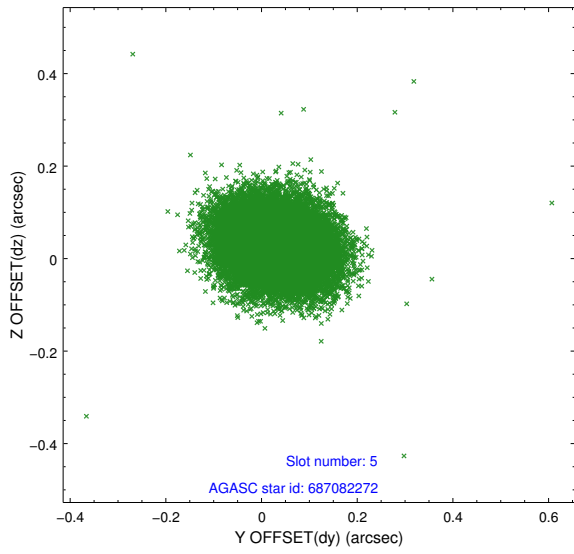
2.4.1 Slot 3



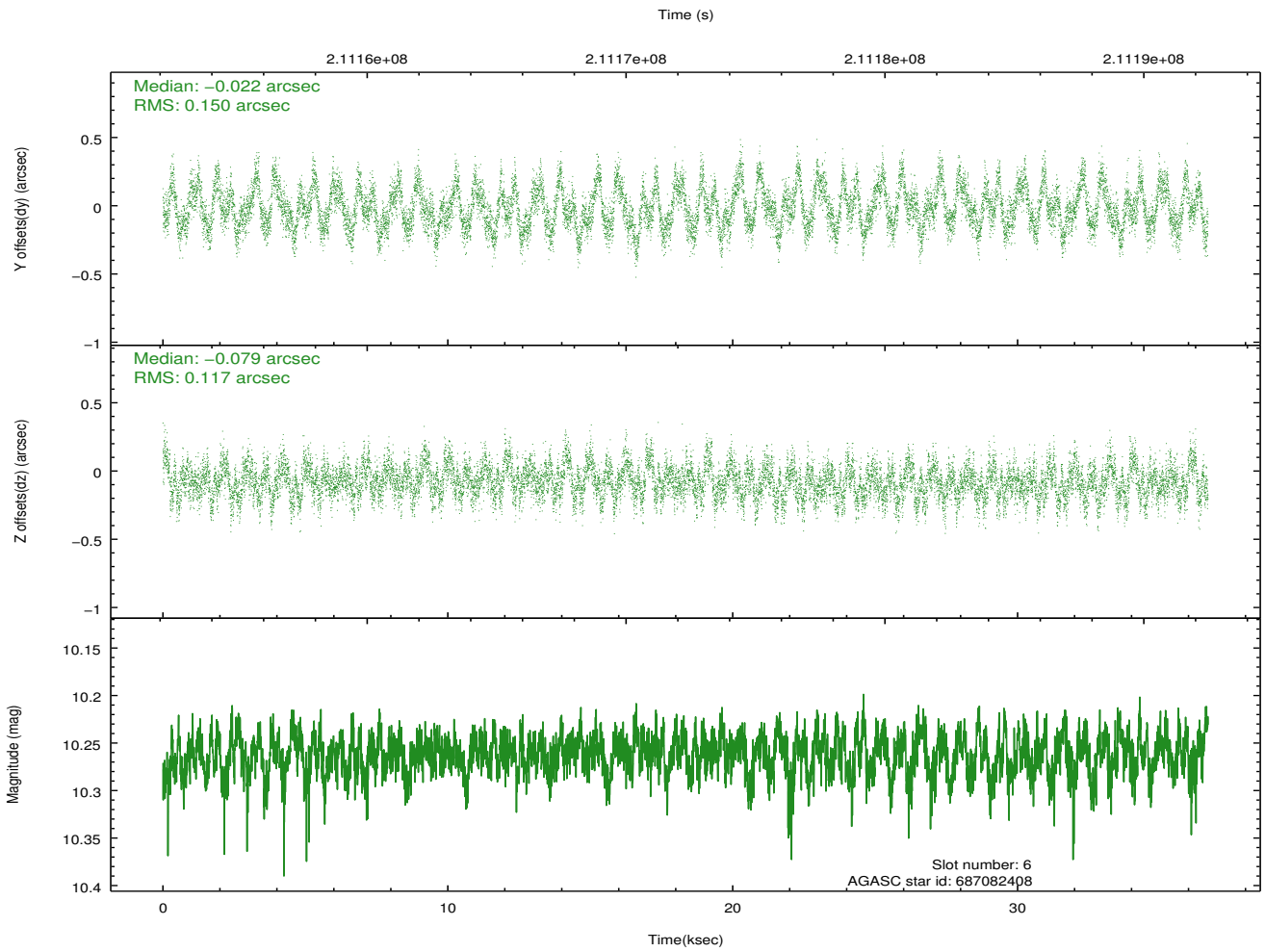
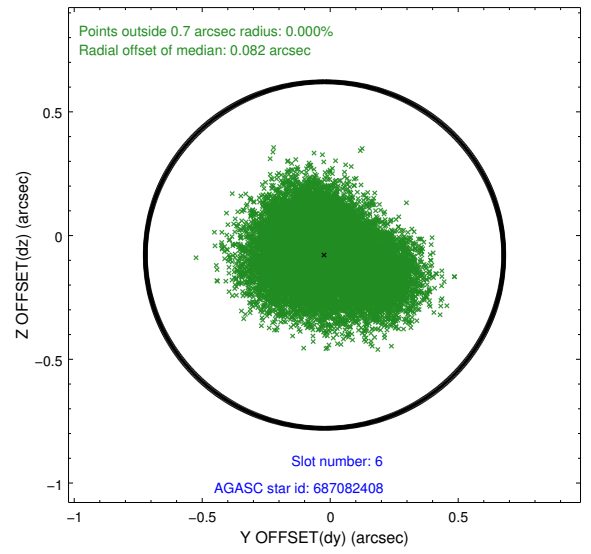
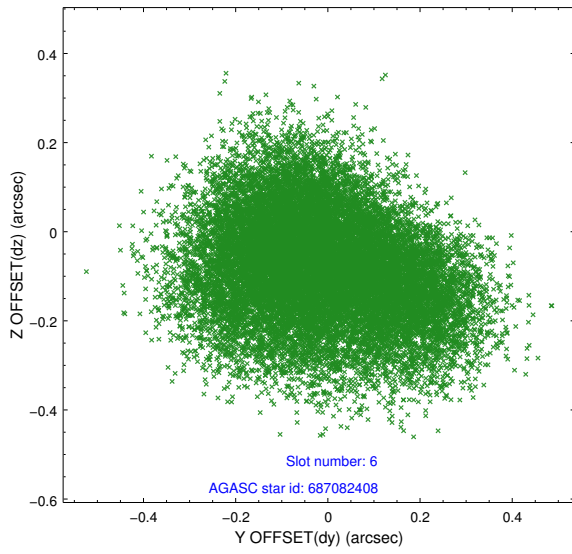
2.4.2 Slot 4



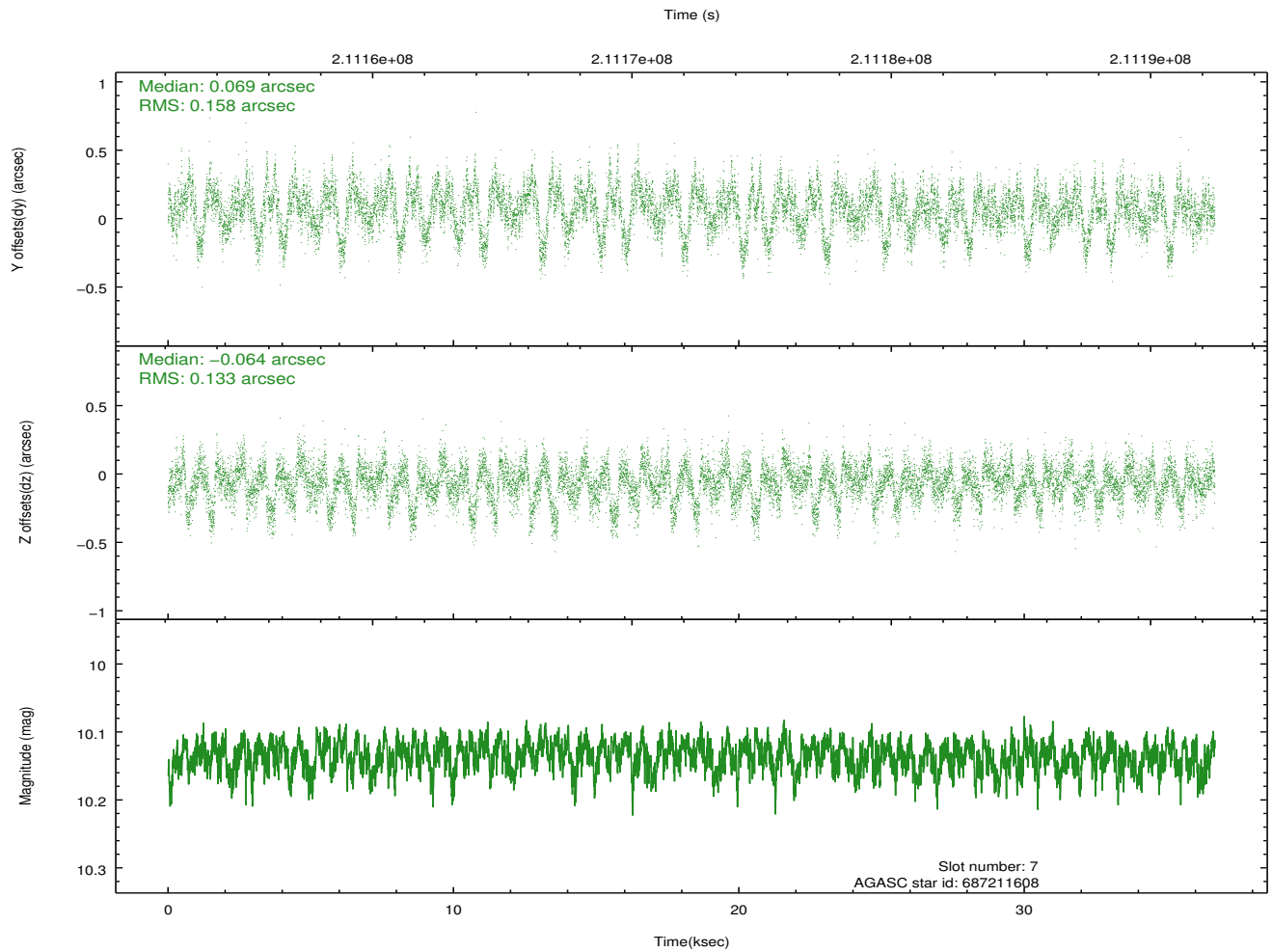
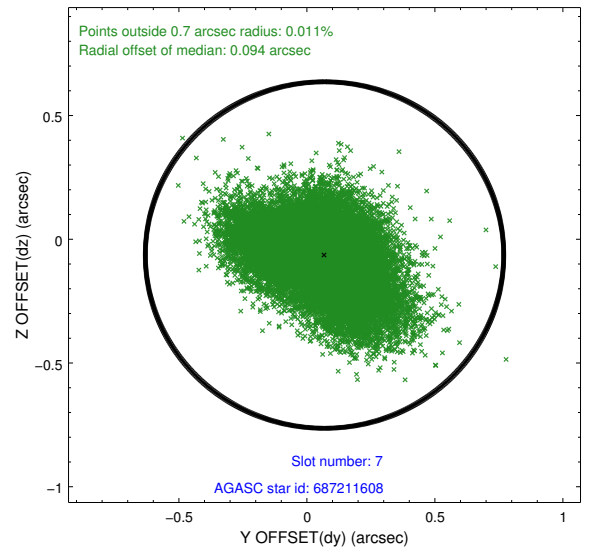
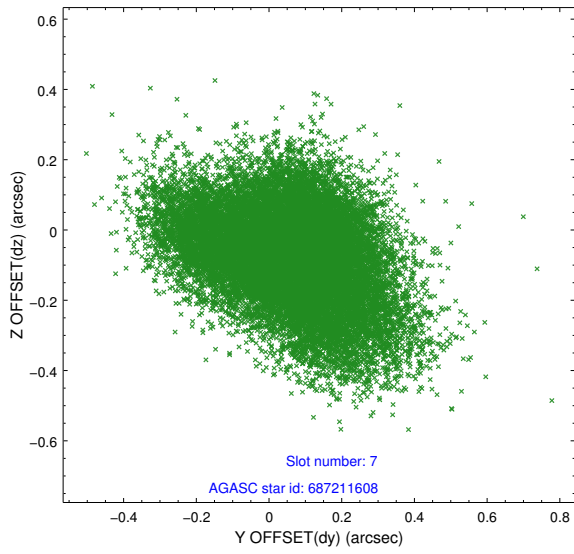
2.4.3 Slot 5



2.4.4 Slot 6

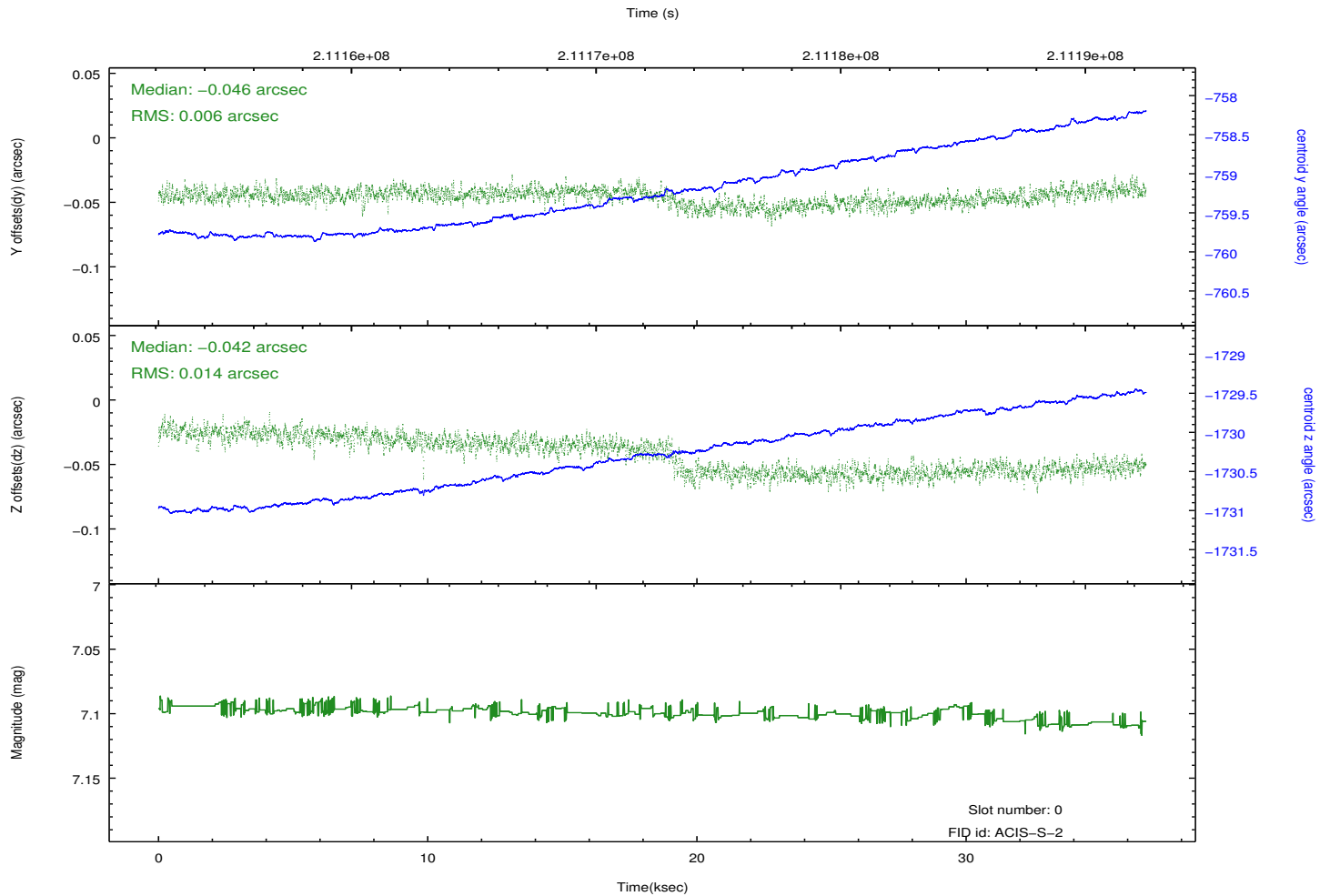
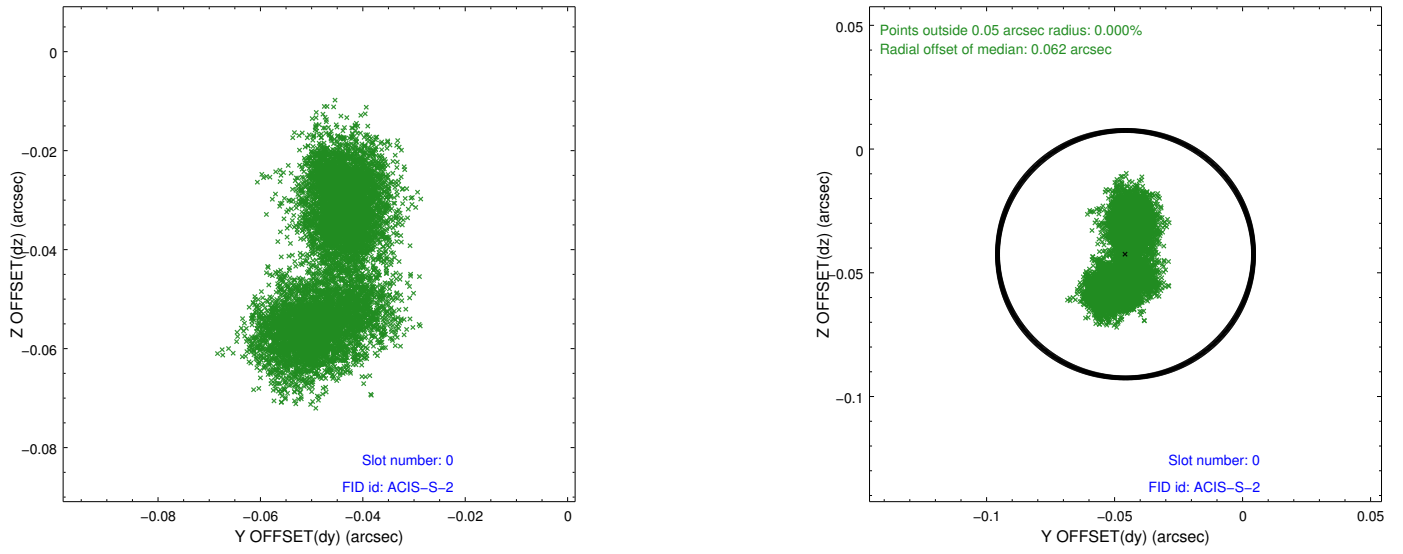


2.4.5 Slot 7

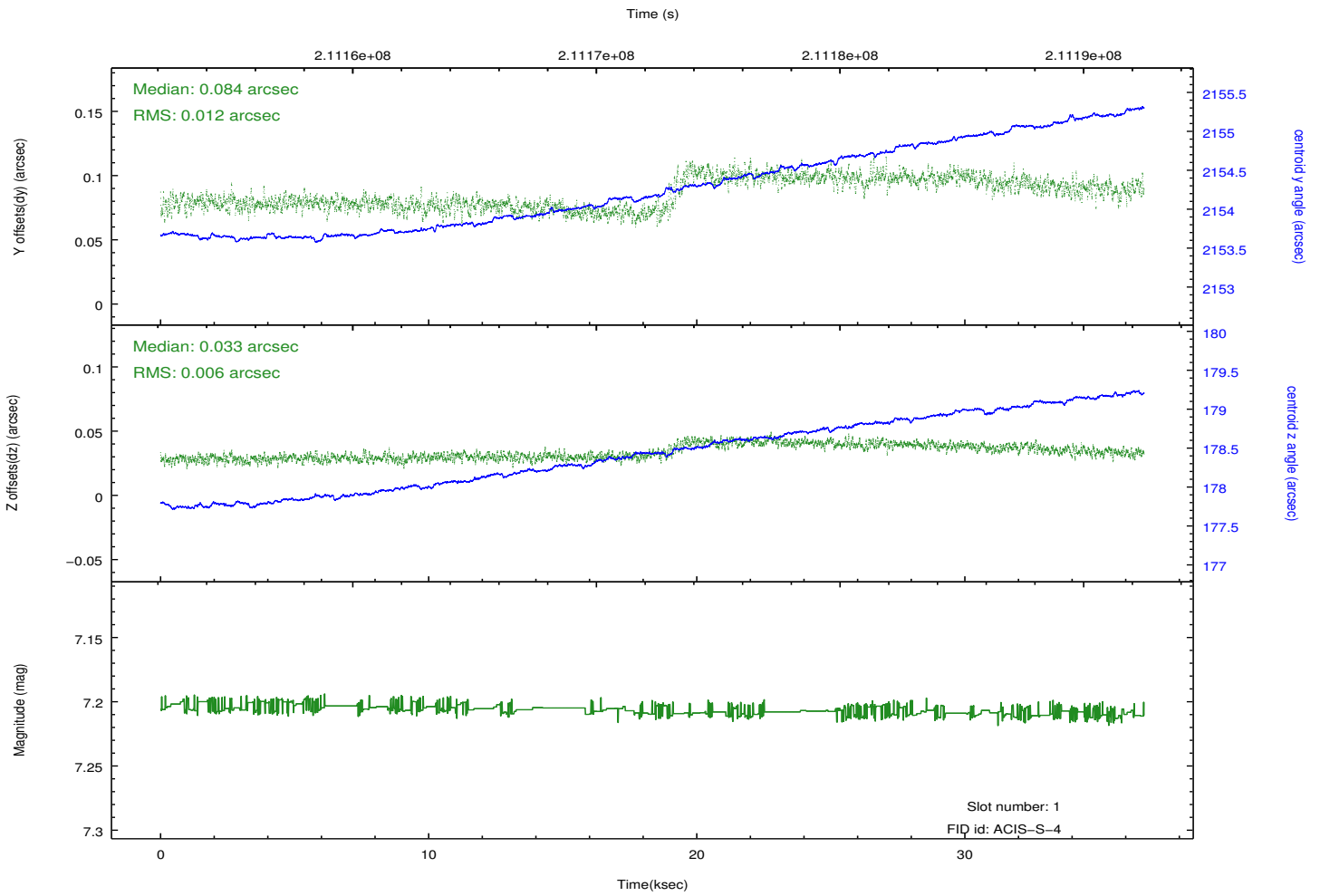
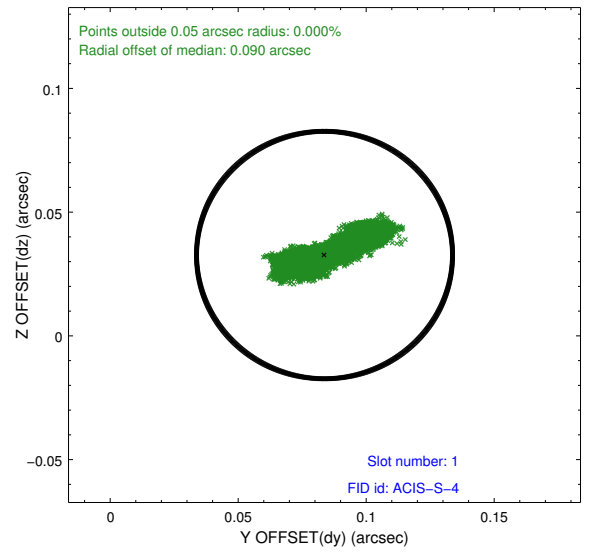
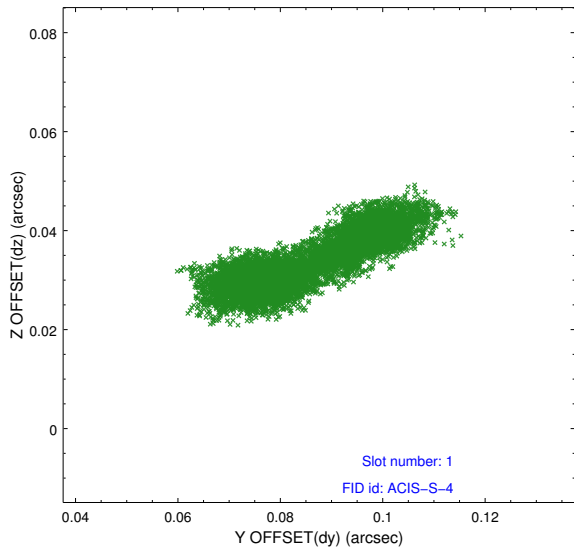


2.5 FID Slots

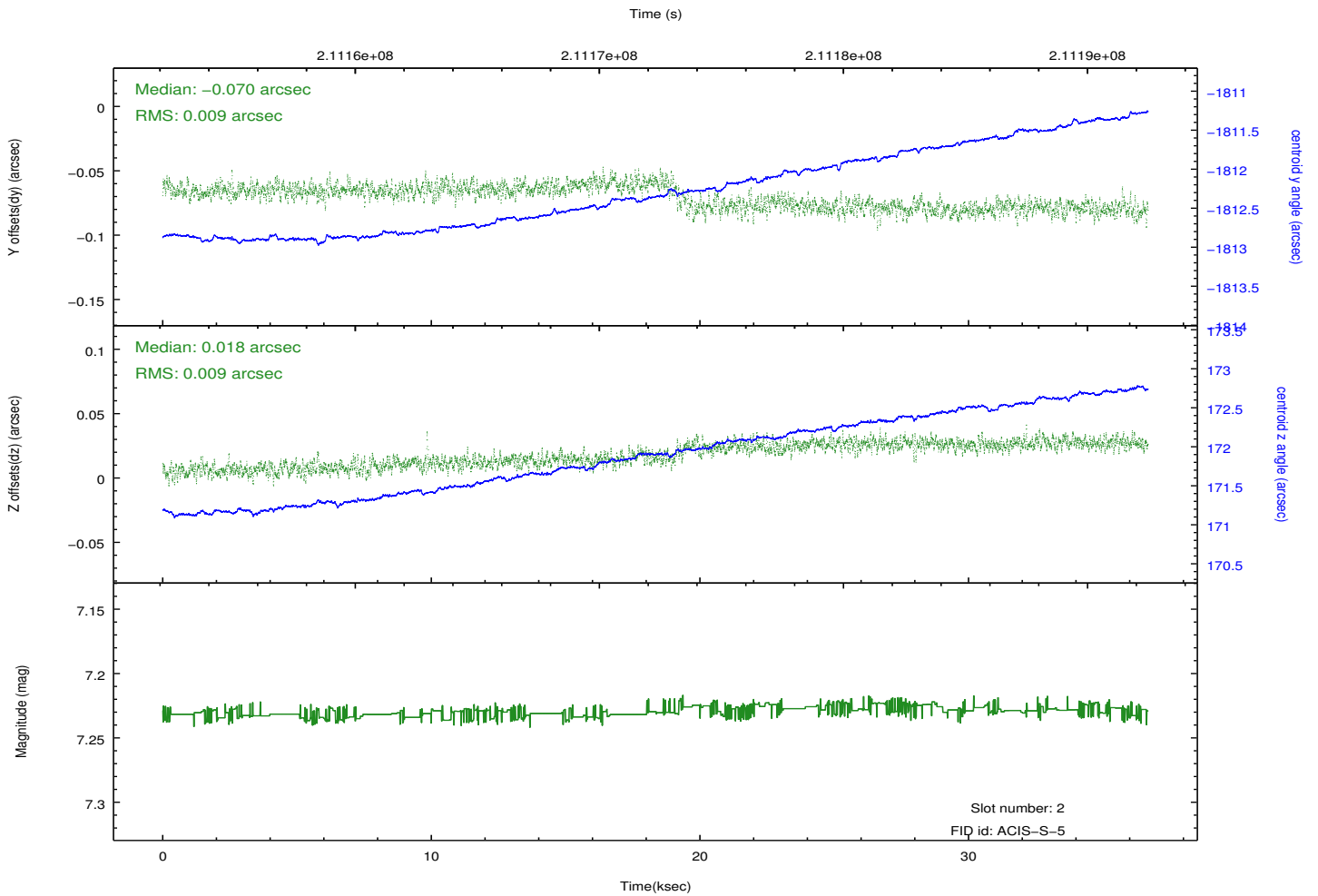
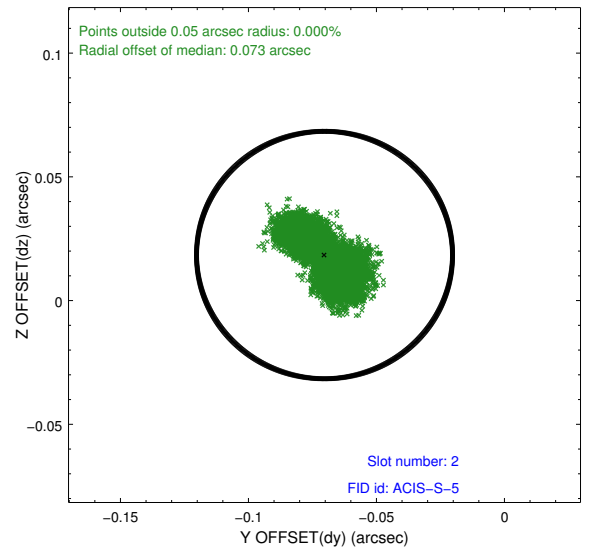
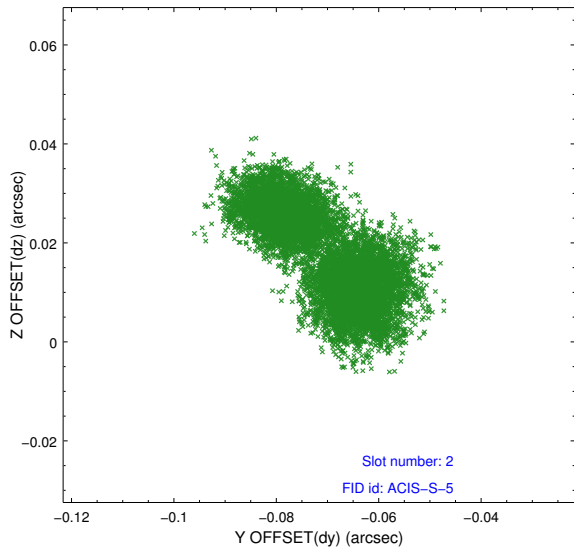
2.5.1 Slot 0



2.5.2 Slot 1



2.5.3 Slot 2



A Summary

A.1 Status

V&V Scientist	Beth Sundheim
V&V Date (YYYY-MM-DD)	2012.12.27
V&V Edition	1
V&V Disposition and Status	OK
V&V Charge Time	36.672

A.2 Comments