

V&V Reference Report

L2 ASCDS Version : 8.4.5

Observation 4972 - L2 Version 3
Chandra X-Ray Center

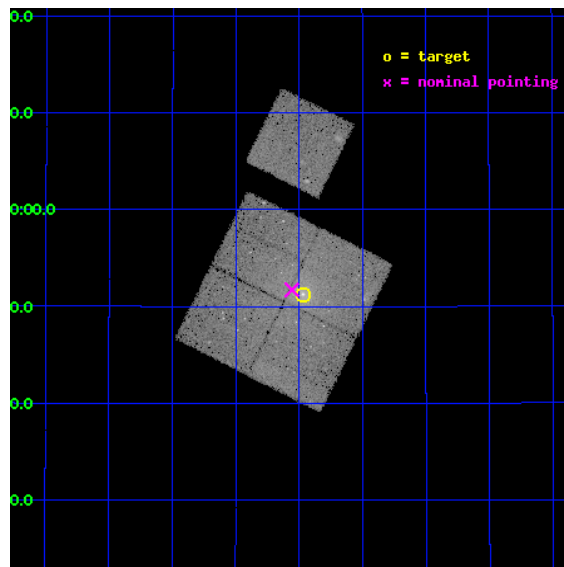
L2 Processing Date : Nov 9 2012

Contents

1	Front	2
2	OBI	3
2.1	OBI	3
2.1.1	Images	3
2.1.2	Bias	3
2.1.3	Parameters	4
2.1.4	Events	4
2.2	Compared Parameters	5
2.3	Aspect	6
2.4	Star Slots	9
2.4.1	Slot 3	9
2.4.2	Slot 4	10
2.4.3	Slot 5	11
2.4.4	Slot 6	12
2.4.5	Slot 7	13
2.5	FID Slots	14
2.5.1	Slot 0	14
2.5.2	Slot 1	15
2.5.3	Slot 2	16
A	Summary	17
A.1	Status	17
A.2	Comments	17

1 Front

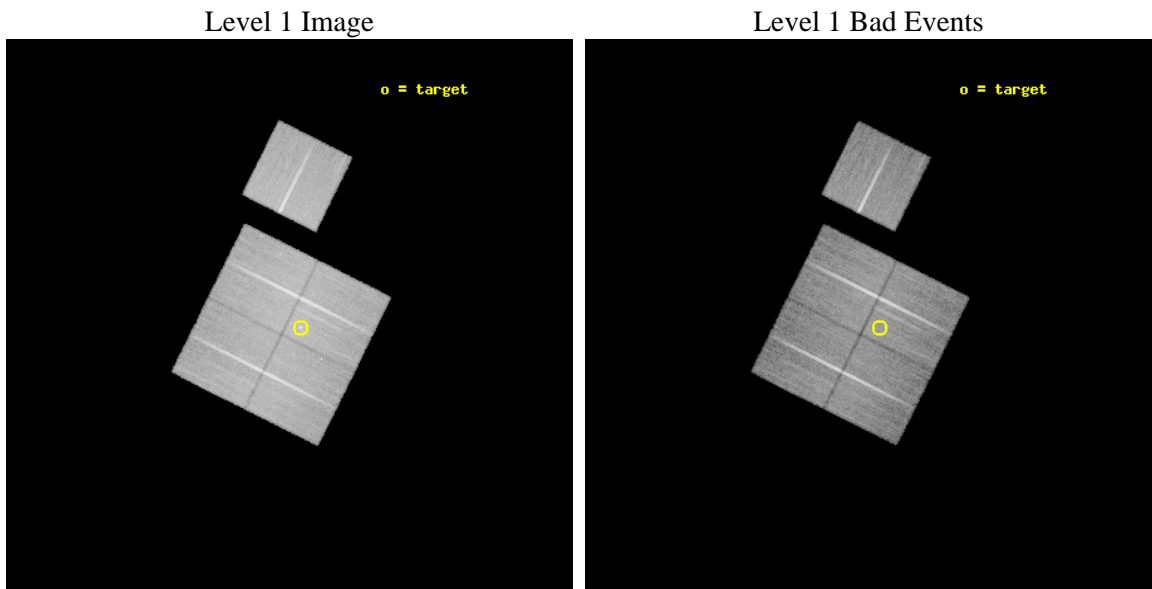
seq_num	800417	Sequence number
obs_id	4972	Observation id
title	Testing Formation Models and Heating and Feedback Mechanisms In Galaxy Groups	Proposal title
observer	Dr. william forman	Principal investigator
object	NGC6269	Source name
dtcycle	0	
cycle	P	events from which exps? Prim/Second/Both
ra_targ	254.492083	Observer's specified target RA [deg]
dec_targ	27.854444	Observer's specified target Dec [deg]
ra_nom	254.51422822279	Nominal RA [deg]
dec_nom	27.862126824146	Nominal Dec [deg]
roll_nom	26.539039584728	Nominal Roll [deg]
revision	3	Processing version of data
ontime	40160.458932608	Sum of GTIs [s]
livetime	39635.732970954	Livetime [s]
ontime0	40163.599922746	Sum of GTIs [s]
ontime1	40154.176992059	Sum of GTIs [s]
ontime2	40157.3179923	Sum of GTIs [s]
ontime3	40160.458932608	Sum of GTIs [s]
ontime6	40157.317962378	Sum of GTIs [s]
l2events	110921	Number of level 2 events



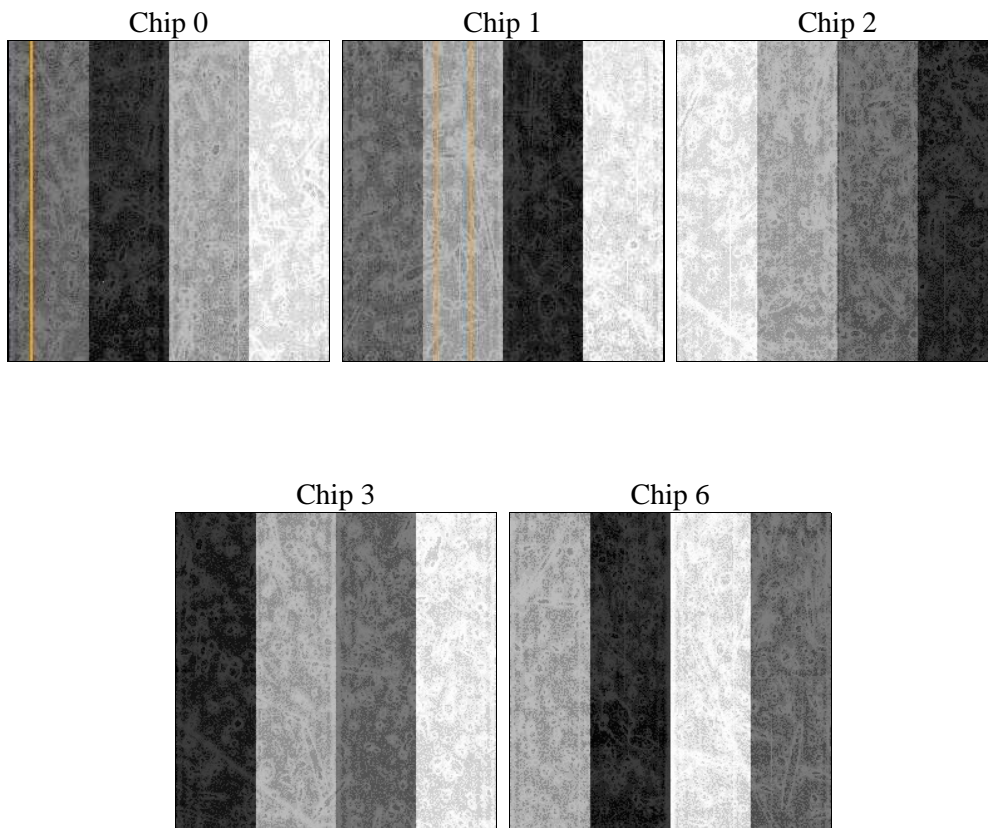
2 OBI

2.1 OBI

2.1.1 Images



2.1.2 Bias



2.1.3 Parameters

obi_num	0	Obi number	sched_exp_time	40000.000000	[s] Scheduled observation exposure time
ascdsver	8.4.5	Processing system revision	ontime	40160.458932608	Sum of GTIs [s]
caldbver	4.5.2	 	ontime0	40163.599922746	Sum of GTIs [s]
date	2012-11-09T16:22:44	Date and time of file creation	ontime1	40154.176992059	Sum of GTIs [s]
revision	3	Processing version of data	ontime2	40157.3179923	Sum of GTIs [s]
			ontime3	40160.458932608	Sum of GTIs [s]
			ontime6	40157.317962378	Sum of GTIs [s]
			l1events	1083939	Number of level 1 events

2.1.4 Events

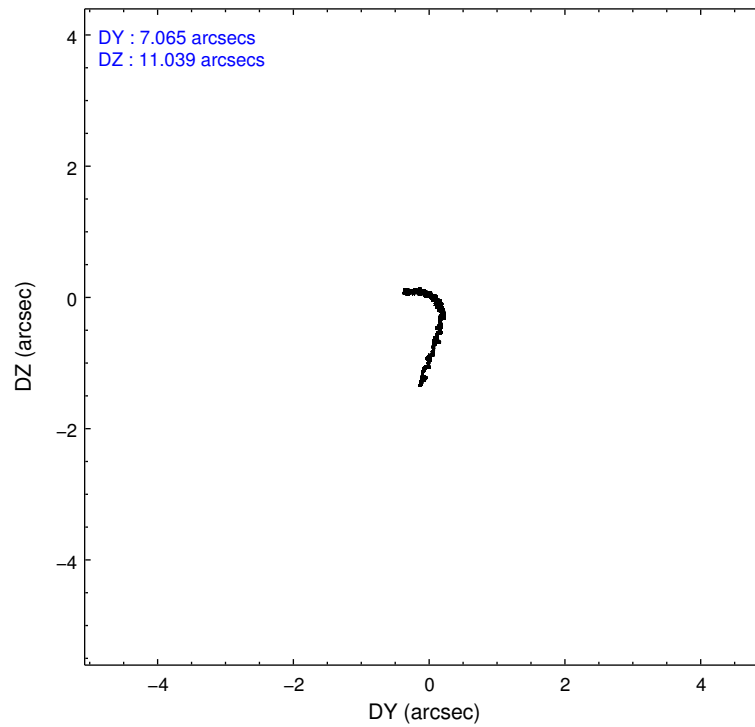
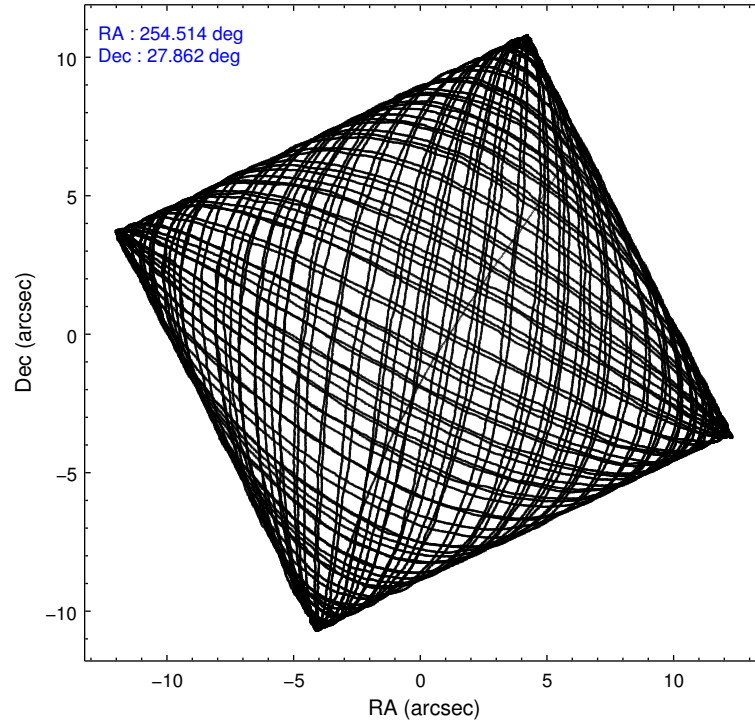
	ccd 0	ccd 1	ccd 2	ccd 3	ccd 6
level 1 events	200843	206171	230909	226081	219935
rejected events	177233	178302	205242	194780	198199
rejected %	88%	86%	88%	86%	90%

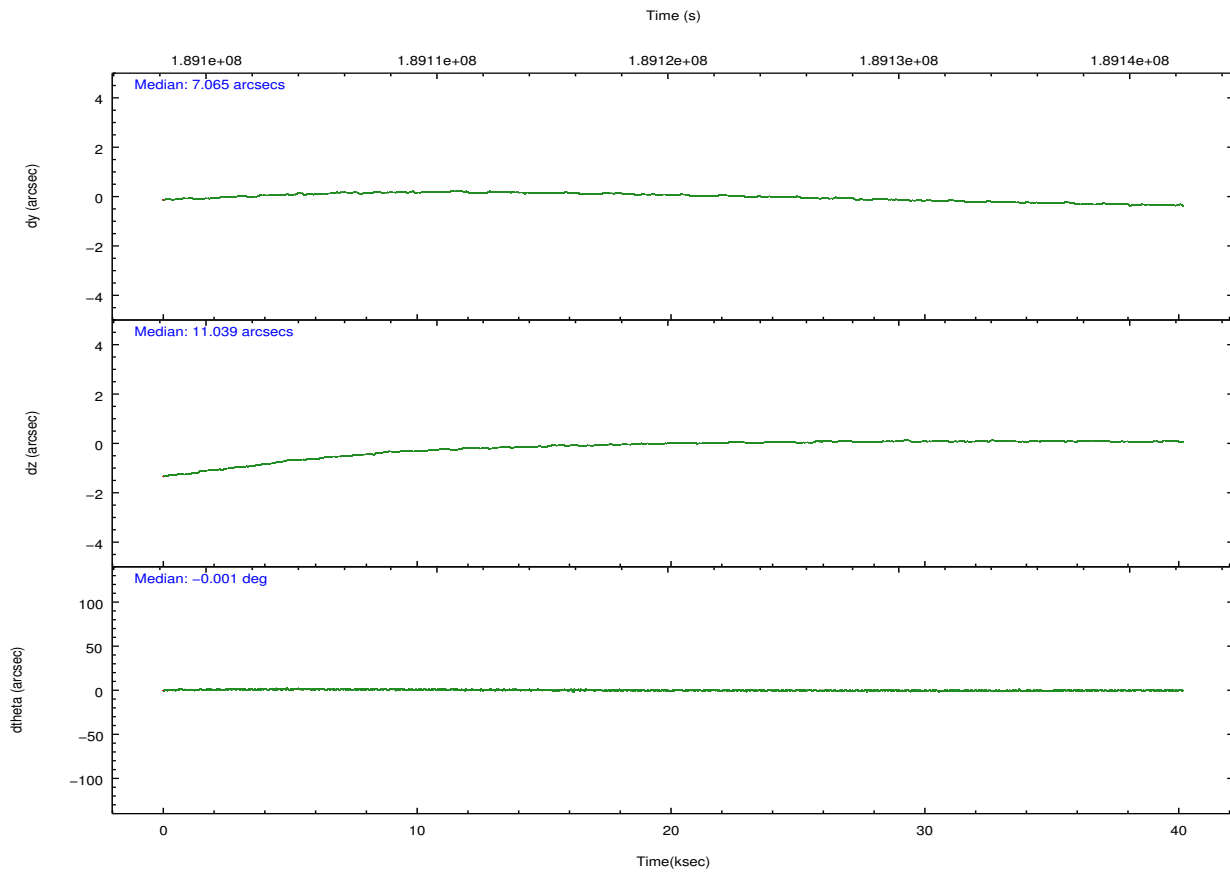
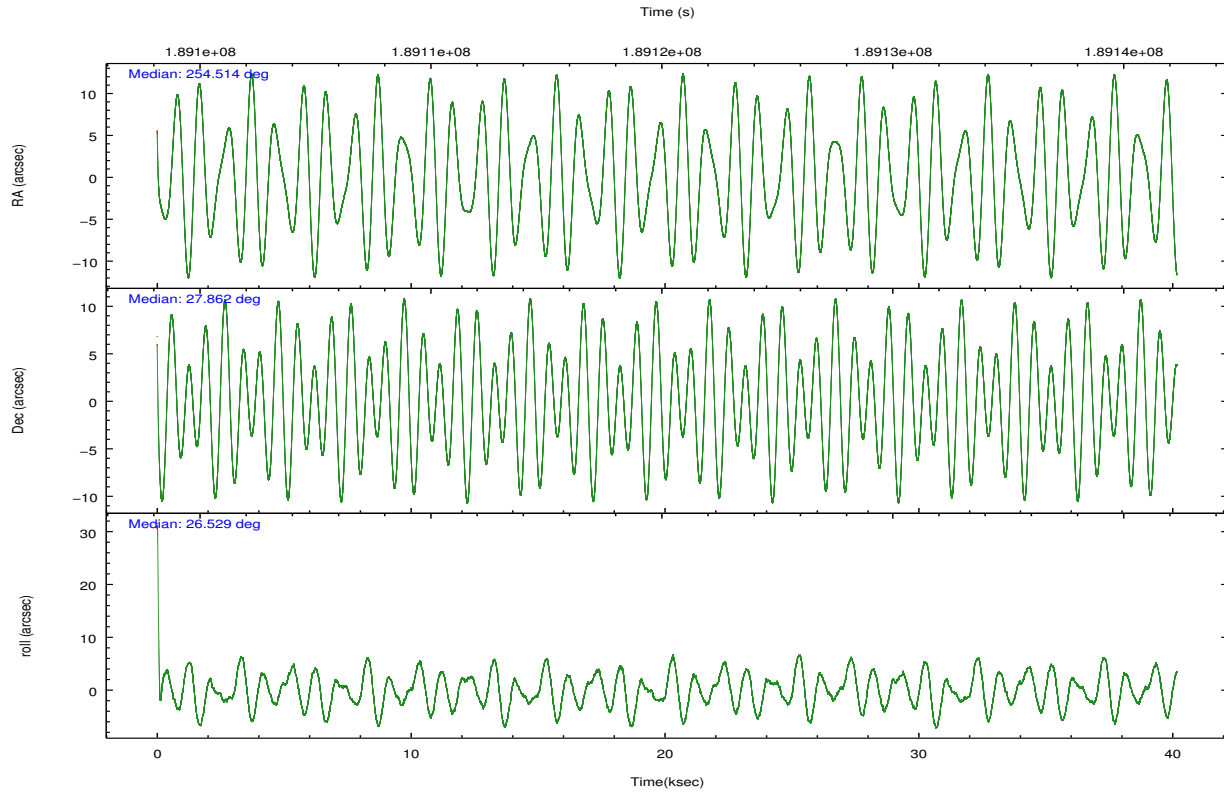
	ccd 0	ccd 1	ccd 2	ccd 3	ccd 6
grade 0 events	9938	12500	12185	17235	8068
	4%	6%	5%	7%	3%
grade 1 events	108	124	133	153	80
	0%	0%	0%	0%	0%
grade 2 events	5244	5672	5366	5287	4765
	2%	2%	2%	2%	2%
grade 3 events	2576	2908	2398	2764	2518
	1%	1%	1%	1%	1%
grade 4 events	2487	2789	2543	2707	2527
	1%	1%	1%	1%	1%
grade 5 events	7708	8225	7259	8733	8742
	3%	3%	3%	3%	3%
grade 6 events	4327	5025	4066	4229	4837
	2%	2%	1%	1%	2%
grade 7 events	168455	168928	196959	184973	188398
	83%	81%	85%	81%	85%

2.2 Compared Parameters

Parameter	Planned	Actual	Parameter	Planned	Actual
Instrument	ACIS	ACIS	Obspar format version number	7	7
Detector	ACIS-01236	ACIS-01236	Obspar file type	PREDICTED	ACTUAL
Grating	NONE	NONE	Obspar update status	NONE	UPDATED
Data mode	VFAINT	VFAINT	Number of optional ACIS chips dropped	0	0
Observation mode	POINTING	POINTING	On-chip summing requested	N	N
[deg] Pointing RA	254.497246	254.5142282227861	Subarray requested	NONE	NONE
[deg] Pointing Dec	27.839219	27.8621268241459	Alternating exposures requested	N	N
[deg] Pointing Roll	26.338271	26.53903958472849	[s] Primary exposure time	0.000000	3.1
[mm] SIM focus pos	-0.782348	-0.7809083437167272			
[mm] SIM defocus	0	0.001439871863259334			
[mm] SIM translation stage pos	-231.092463	-231.0932336816812			
[mm] SIM translation stage offset	-2.5	-2.499219321248518			
[s] Observation start time (MET)	189100309.184000	189098309.35158			
Observation start date	2003-12-29T15:50:45	2003-12-29T15:18:29			
[s] Observation end time (MET)	189140309.184000	189141204.06594			
Observation end date	2003-12-30T02:57:25	2003-12-30T03:13:24			
Read mode	TIMED	TIMED			

2.3 Aspect



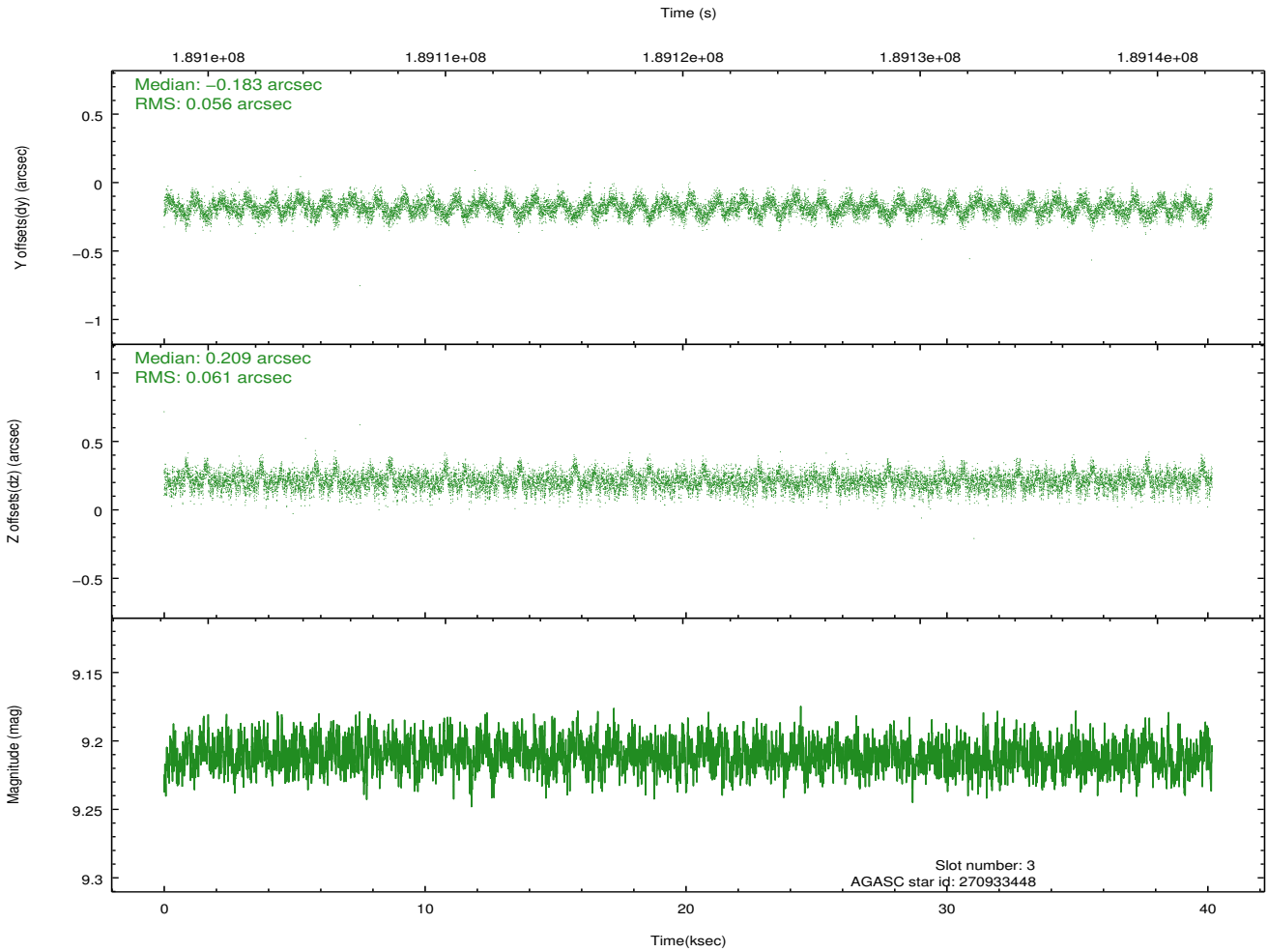
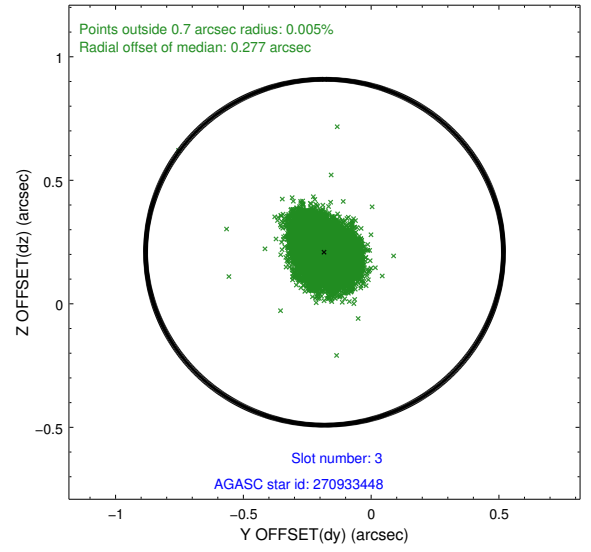
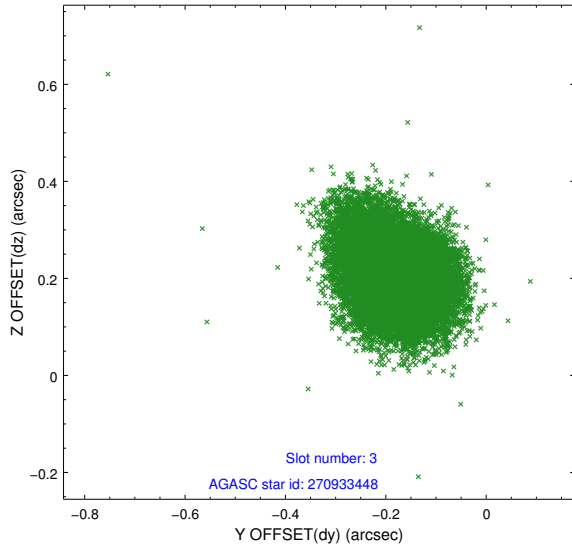


Slot Statistics

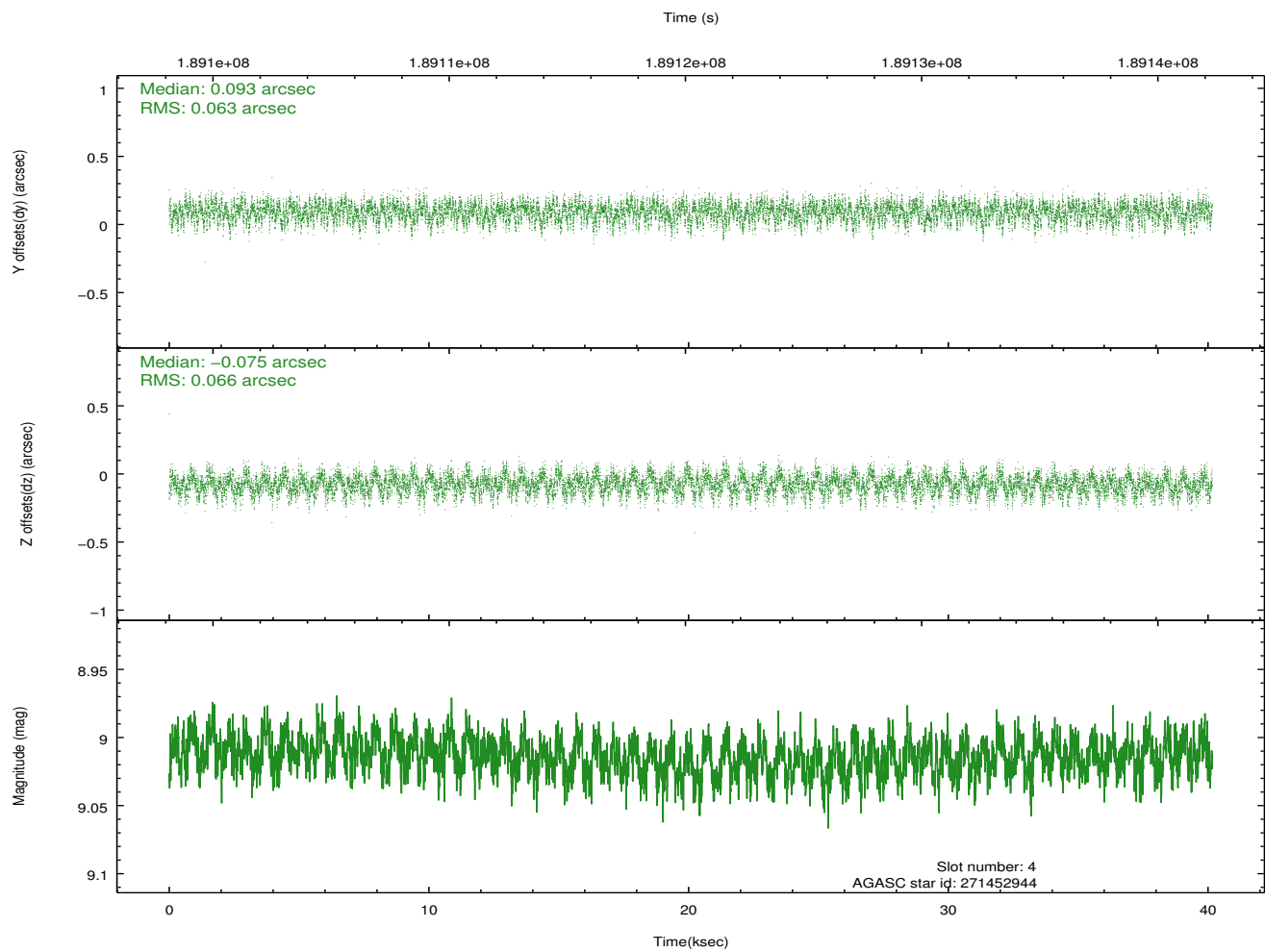
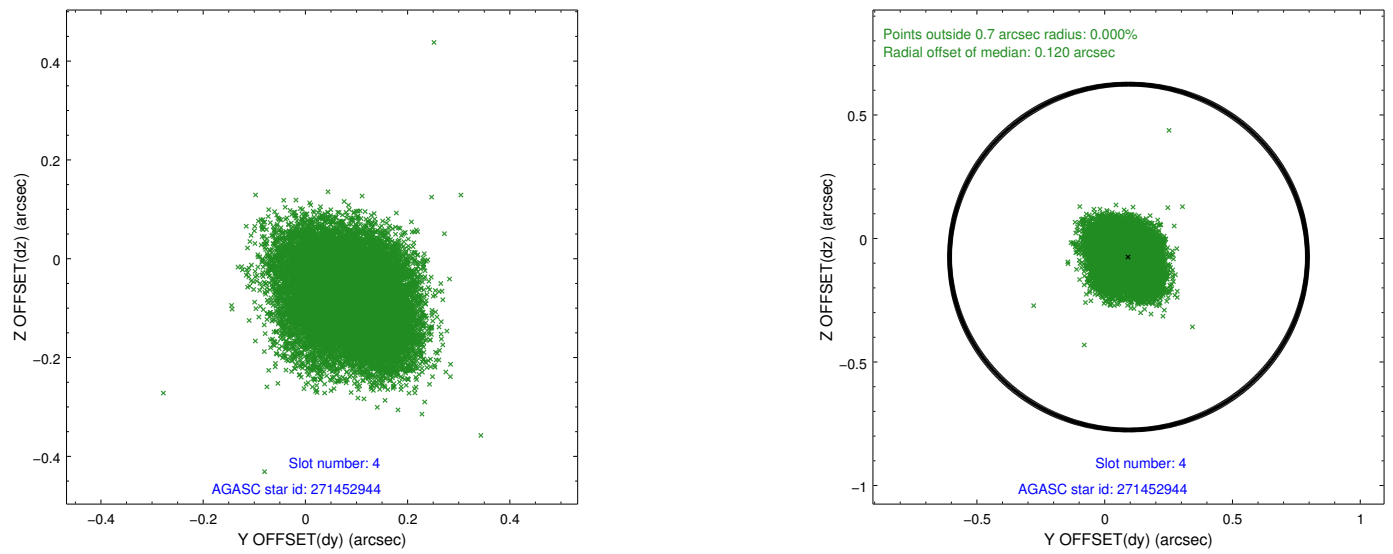
slot	status	id	mag	n_pts	med_dy	med_dz	dr1	dr2	ra	dec	mean_y	mean_z
0	FID	ACIS-I-1	7.23	9796	0.029	-0.000	0.014	0.035	0.000000	0.000000	932.60	-885.61
1	FID	ACIS-I-5	7.23	9798	-0.150	0.052	0.010	0.016	0.000000	0.000000	-1815.64	1011.98
2	FID	ACIS-I-6	7.25	9798	0.029	0.019	0.012	0.039	0.000000	0.000000	398.18	1656.43
3	GUIDE	270933448	9.21	19590	-0.183	0.209	0.088	0.143	254.929117	27.410049	552.87	-1994.37
4	GUIDE	271452944	9.01	19589	0.093	-0.075	0.098	0.158	254.218451	28.321718	-20.65	1949.73
5	GUIDE	271453792	7.62	19593	0.020	-0.155	0.072	0.114	253.729889	28.137131	-1704.04	2048.86
6	GUIDE	270935240	8.15	19592	-0.021	0.010	0.062	0.098	254.043878	27.205763	-2311.13	-1397.41
7	GUIDE	271064712	9.44	19581	0.092	0.013	0.137	0.225	255.474964	27.513344	2283.44	-2424.79

2.4 Star Slots

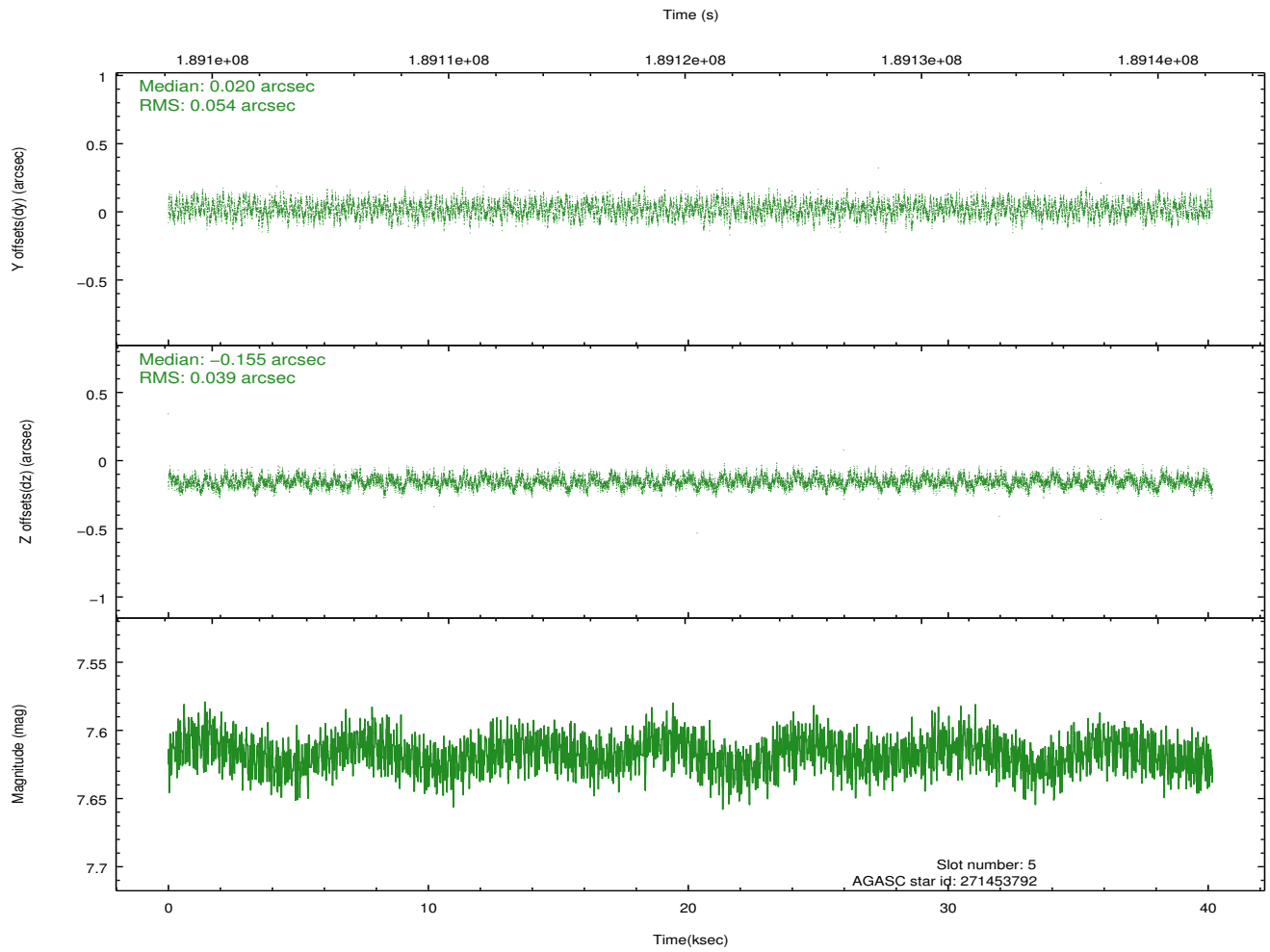
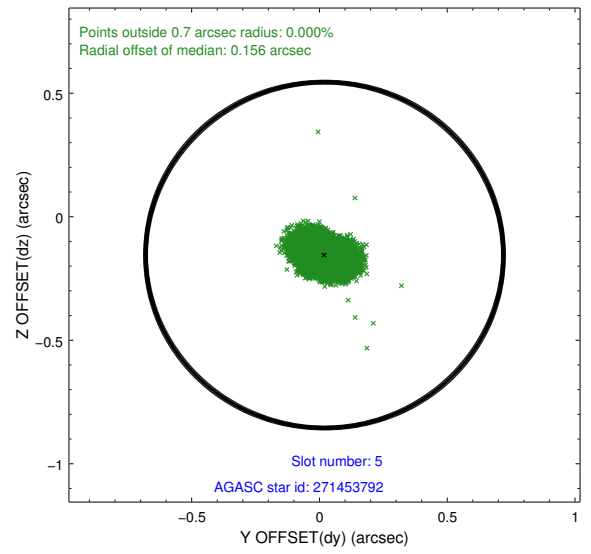
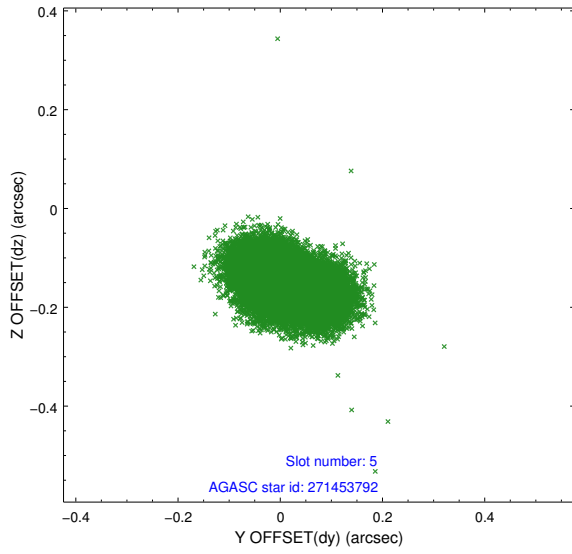
2.4.1 Slot 3



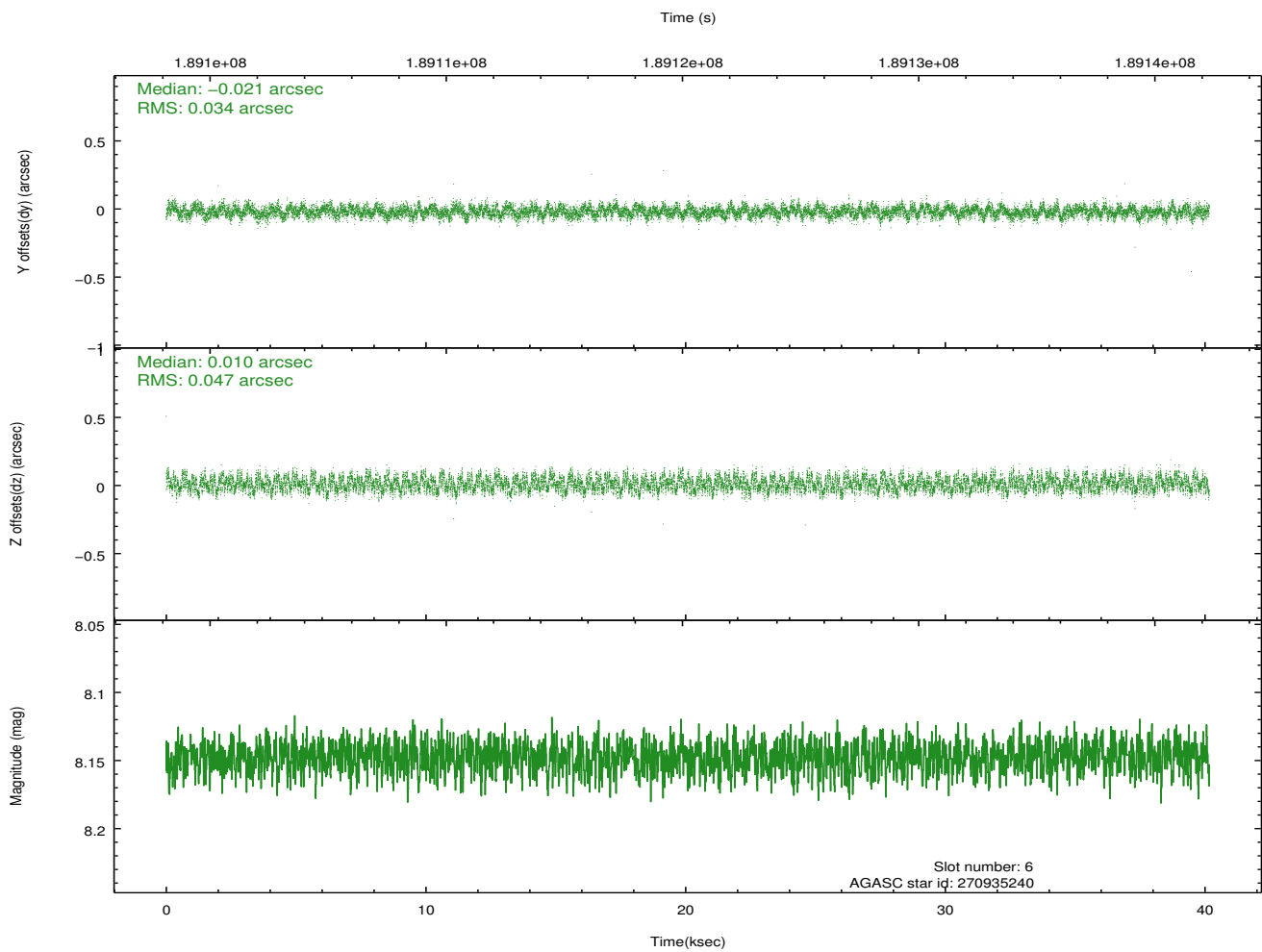
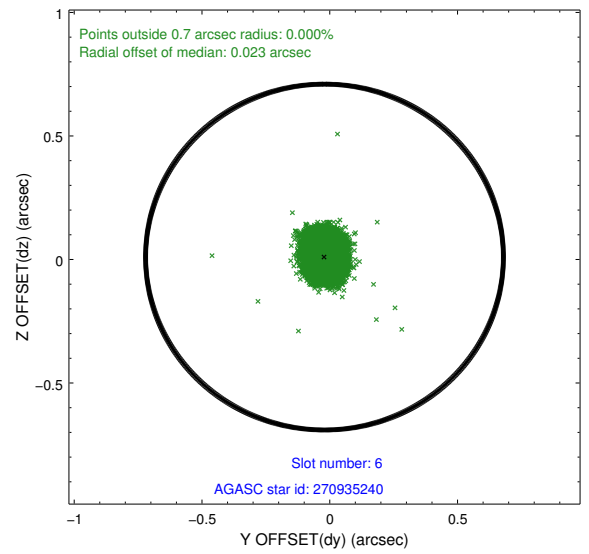
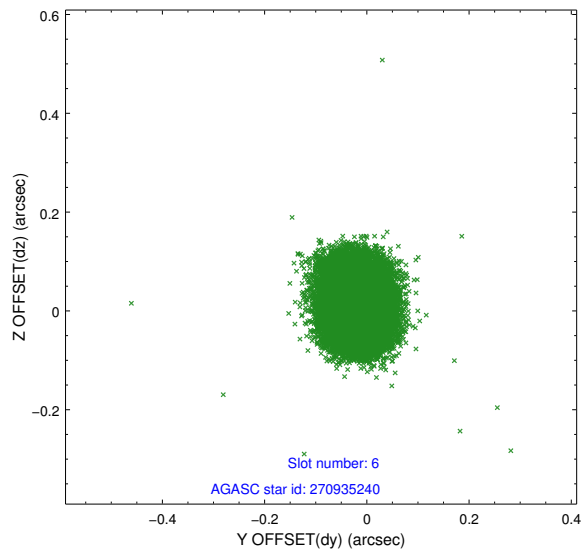
2.4.2 Slot 4



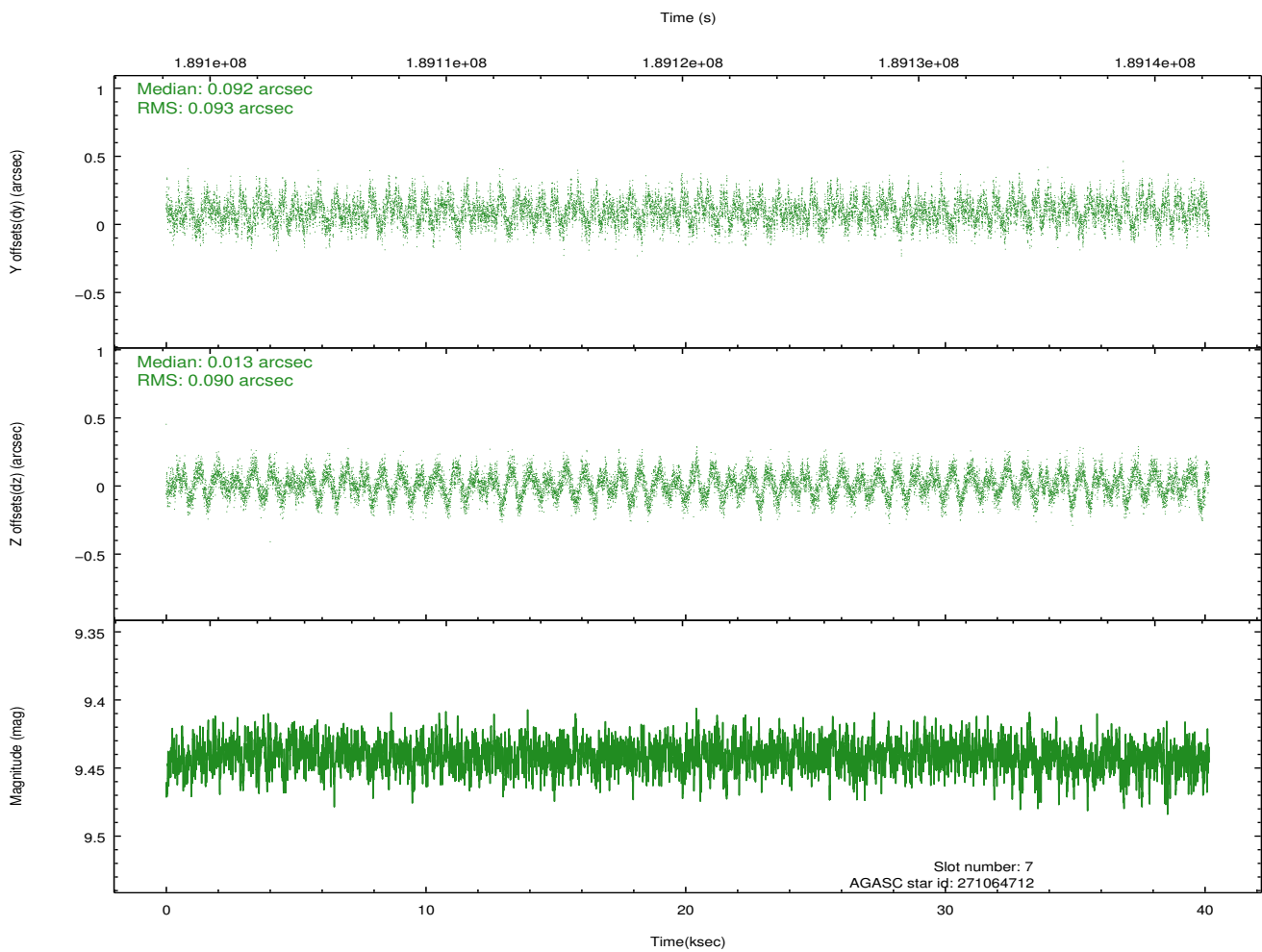
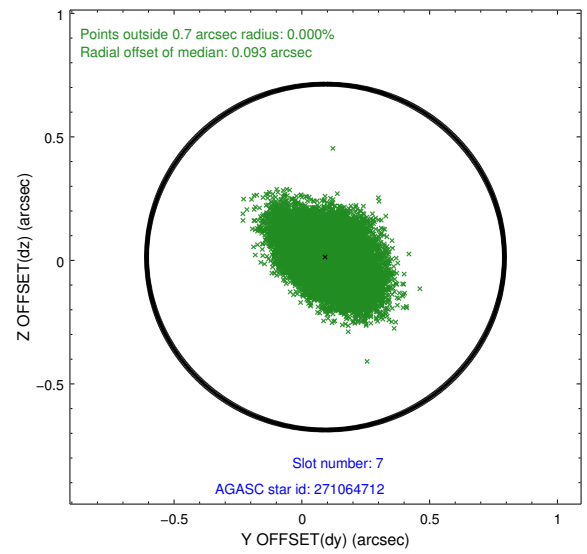
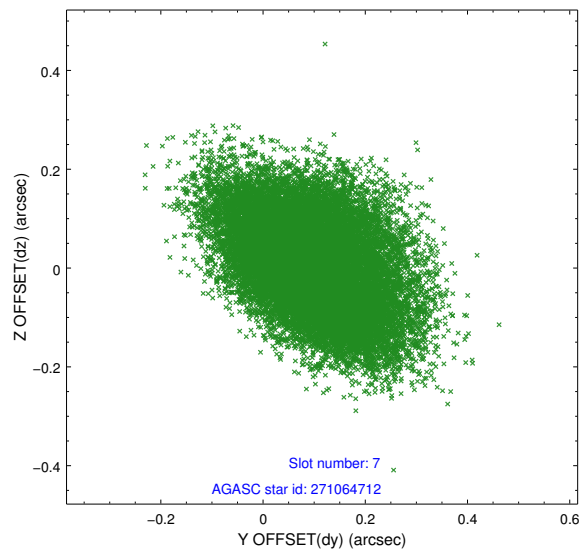
2.4.3 Slot 5



2.4.4 Slot 6

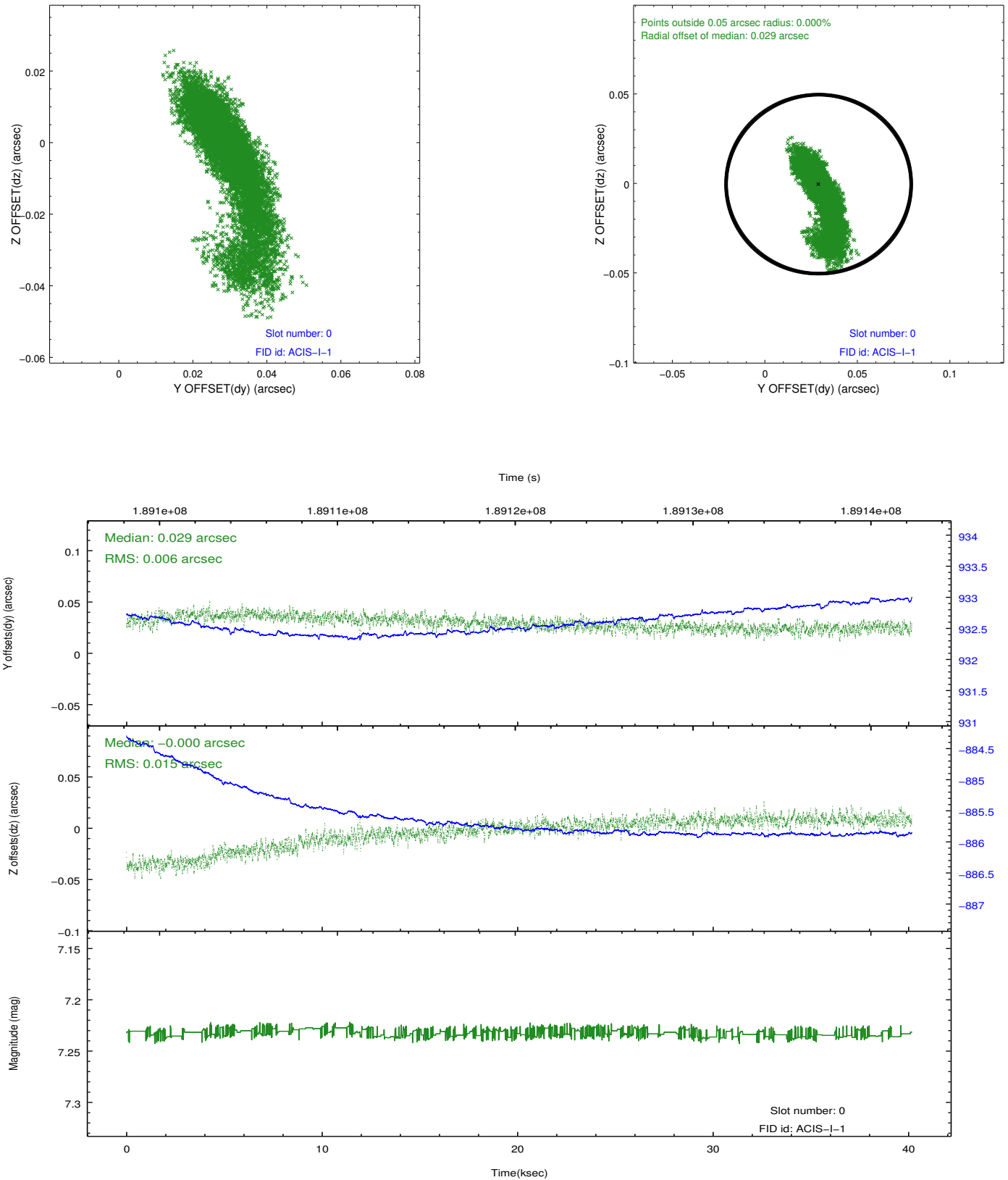


2.4.5 Slot 7

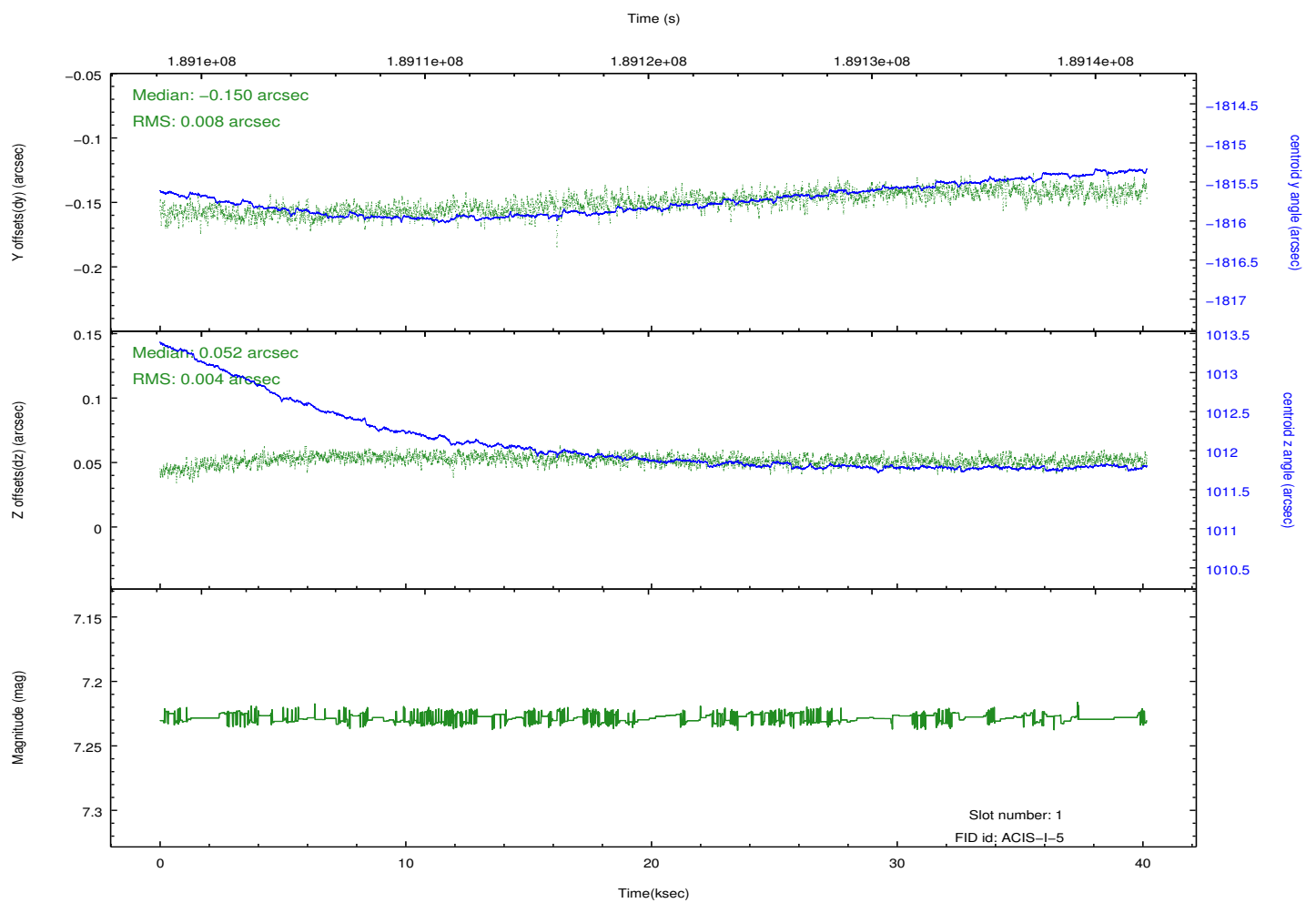
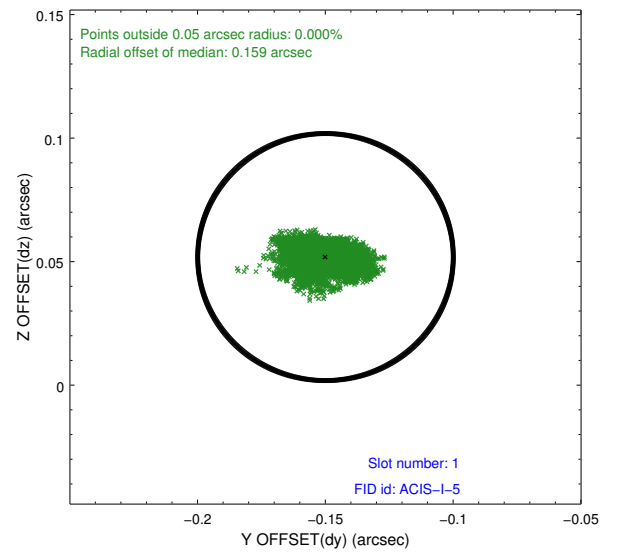
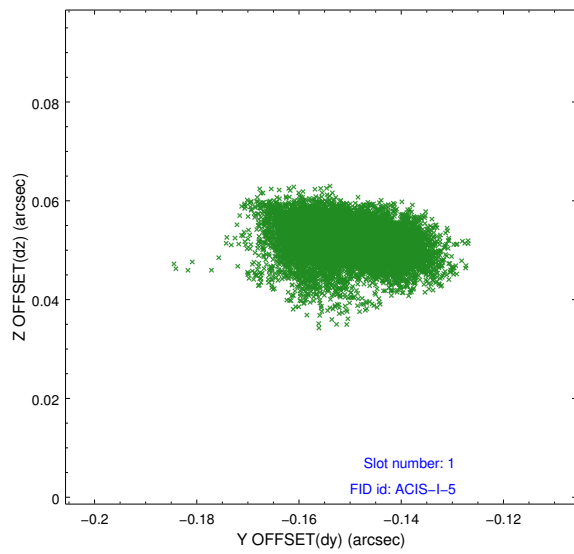


2.5 FID Slots

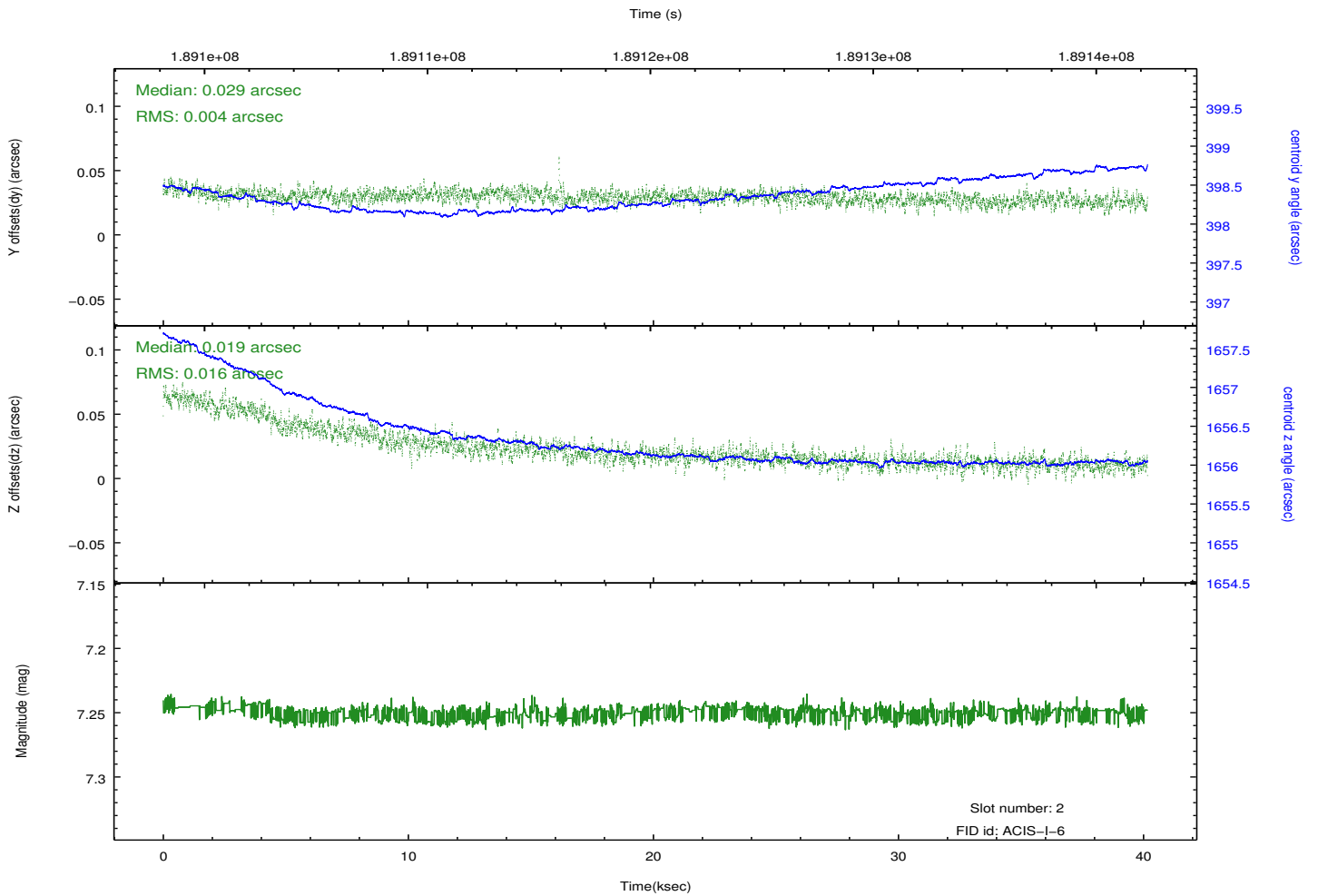
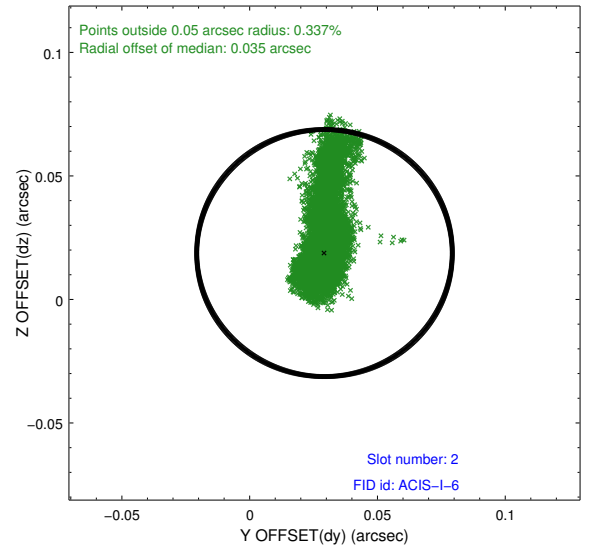
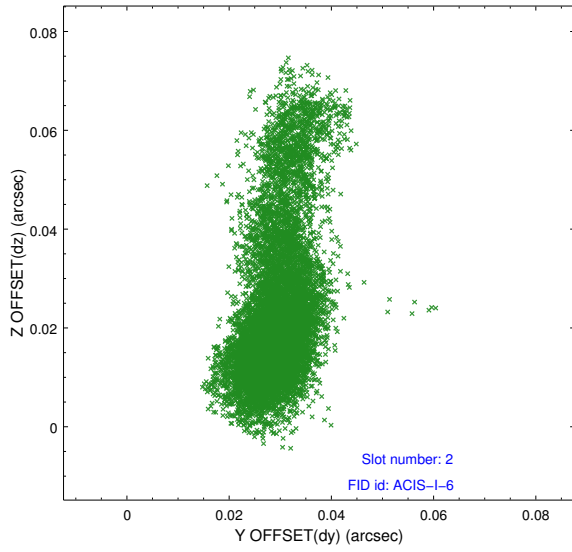
2.5.1 Slot 0



2.5.2 Slot 1



2.5.3 Slot 2



A Summary

A.1 Status

V&V Scientist	Jen Lauer
V&V Date (YYYY-MM-DD)	2012.12.04
V&V Edition	1
V&V Disposition and Status	OK
V&V Charge Time	40.16

A.2 Comments

On day 356 at about 00:30, the OBA heater stuck in the 'on' position. This situation affected obsid 4901 and all subsequent observations to this point. The result of this anomaly could be a displacement of the target on the chip in the z direction. The displacement will be small because everything is still within spec, but the target may be spatially displaced, have a different point spread function, or trail across the chip.