

V&V Reference Report

L2 ASCDS Version : 8.5

Observation 5192 - L2 Version 3
Chandra X-Ray Center

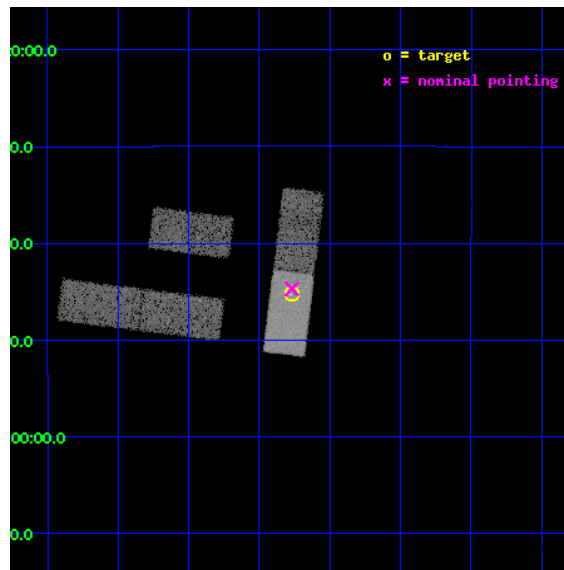
L2 Processing Date : Dec 7 2012

Contents

1	Front	2
2	OBI	3
2.1	OBI	3
2.1.1	Images	3
2.1.2	Bias	3
2.1.3	Parameters	4
2.1.4	Events	4
2.2	Compared Parameters	5
2.3	Aspect	6
2.4	Star Slots	9
2.4.1	Slot 3	9
2.4.2	Slot 4	10
2.4.3	Slot 5	11
2.4.4	Slot 6	12
2.4.5	Slot 7	13
2.5	FID Slots	14
2.5.1	Slot 0	14
2.5.2	Slot 1	15
2.5.3	Slot 2	16
A	Summary	17
A.1	Status	17
A.2	Comments	17

1 Front

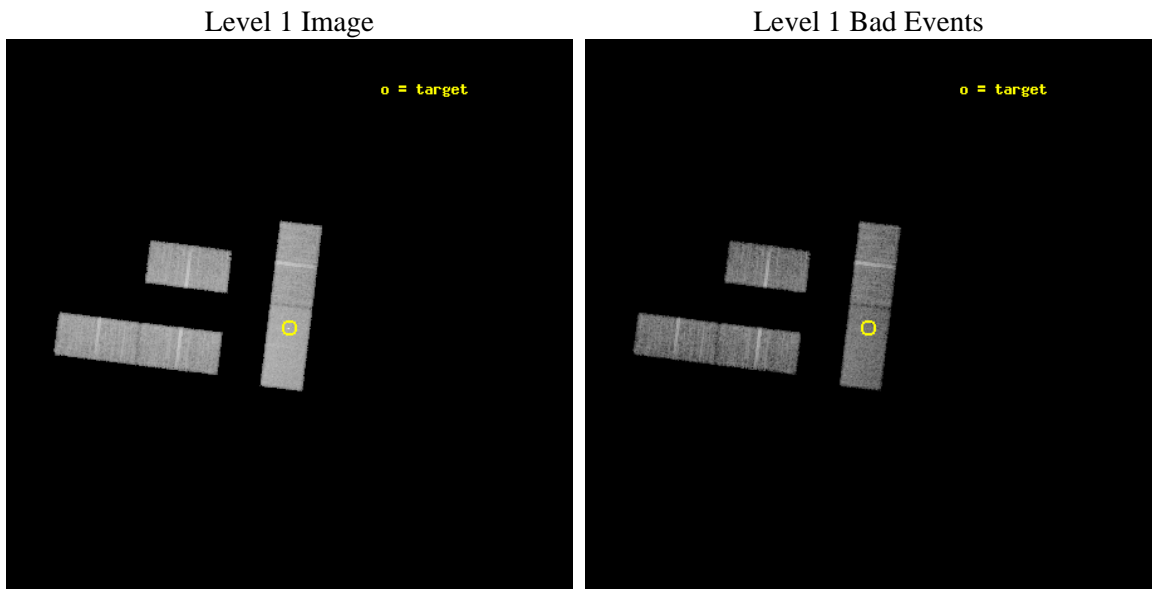
seq_num	701006	Sequence number
obs_id	5192	Observation id
title	Alternate - A STUDY OF QUASAR EVOLUTION WITH THE AID OF LENSING	Pr
observer	Professor Gordon Garmire	Principal investigator
object	0142-100	Source name
dtcycle	0	
cycle	P	events from which exps? Prim/Second/Both
ra_targ	26.316667	Observer's specified target RA [deg]
dec_targ	-9.754167	Observer's specified target Dec [deg]
ra_nom	26.317234236043	Nominal RA [deg]
dec_nom	-9.7450420592032	Nominal Dec [deg]
roll_nom	97.01723931813	Nominal Roll [deg]
revision	3	Processing version of data
ontime	13656.099904239	Sum of GTIs [s]
livetime	13334.196708408	Livetime [s]
ontime1	13656.099904239	Sum of GTIs [s]
ontime2	13656.099904239	Sum of GTIs [s]
ontime3	13656.099904239	Sum of GTIs [s]
ontime6	13656.099904239	Sum of GTIs [s]
ontime7	13656.099904239	Sum of GTIs [s]
l2events	51015	Number of level 2 events



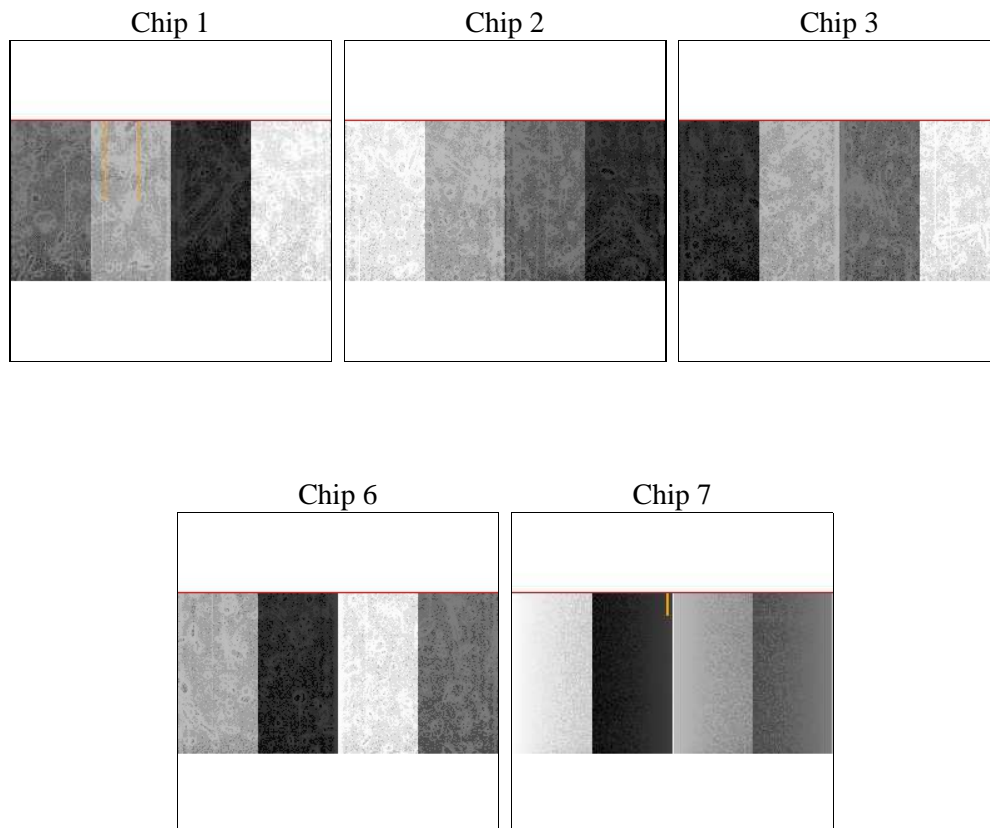
2 OBI

2.1 OBI

2.1.1 Images



2.1.2 Bias



2.1.3 Parameters

obi_num	0	Obi number	sched_exp_time	13500.000000	[s] Scheduled observation exposure time
ascdsver	8.5	Processing system revision	ontime	13656.099904239	Sum of GTIs [s]
caldbver	4.5.4	 	ontime1	13656.099904239	Sum of GTIs [s]
date	2012-12-07T17:56:42	Date and time of file creation	ontime2	13656.099904239	Sum of GTIs [s]
revision	3	Processing version of data	ontime3	13656.099904239	Sum of GTIs [s]
			ontime6	13656.099904239	Sum of GTIs [s]
			ontime7	13656.099904239	Sum of GTIs [s]
			l1events	298877	Number of level 1 events

2.1.4 Events

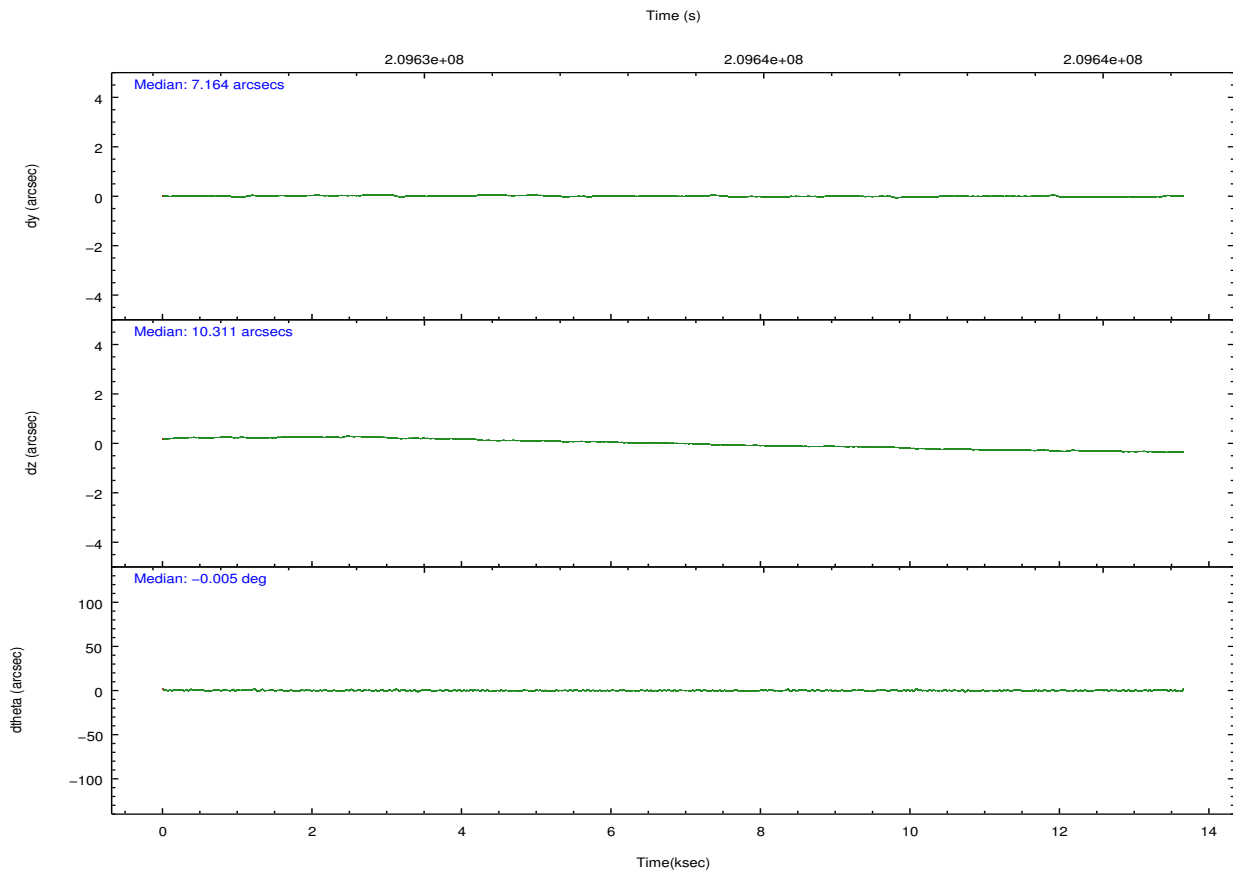
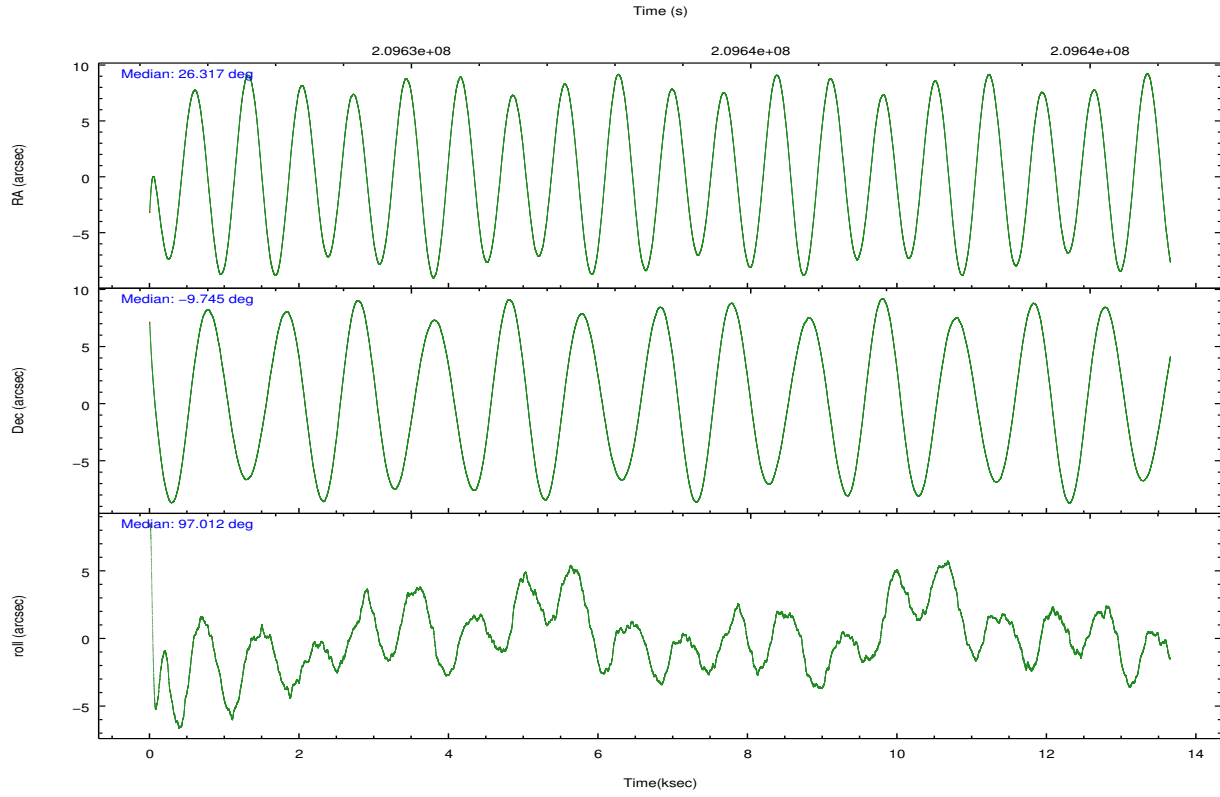
	ccd 1	ccd 2	ccd 3	ccd 6	ccd 7
level 1 events	53225	57419	56011	57867	74355
rejected events	46671	51143	49623	51488	44218
rejected %	87%	89%	88%	88%	59%

	ccd 1	ccd 2	ccd 3	ccd 6	ccd 7
grade 0 events	2600	2727	2733	2484	3133
	4%	4%	4%	4%	4%
grade 1 events	20	28	23	22	74
	0%	0%	0%	0%	0%
grade 2 events	1341	1220	1200	1307	6433
	2%	2%	2%	2%	8%
grade 3 events	809	745	789	808	3067
	1%	1%	1%	1%	4%
grade 4 events	792	743	791	769	2984
	1%	1%	1%	1%	4%
grade 5 events	2336	2054	2433	2622	7068
	4%	3%	4%	4%	9%
grade 6 events	1306	1104	1162	1313	15944
	2%	1%	2%	2%	21%
grade 7 events	44021	48798	46880	48542	35652
	82%	84%	83%	83%	47%

2.2 Compared Parameters

Parameter	Planned	Actual	Parameter	Planned	Actual
Instrument	ACIS	ACIS	Obspar format version number	7	7
Detector	ACIS-12367	ACIS-12367	Obspar file type	PREDICTED	ACTUAL
Grating	NONE	NONE	Obspar update status	NONE	UPDATED
Data mode	VFAINT	VFAINT	Number of optional ACIS chips dropped	0	0
Observation mode	POINTING	POINTING	On-chip summing requested	N	N
[deg] Pointing RA	26.334185	26.31723423604316	Subarray requested	CUSTOM	1/2
[deg] Pointing Dec	-9.766524	-9.745042059203152	Subarray start row	257	257
[deg] Pointing Roll	96.863466	97.01723931813039	Subarray row count	512	512
[mm] SIM focus pos	-0.684267	-0.6828225247311905	Alternating exposures requested	N	N
[mm] SIM defocus	0	0.001444936568705701	[s] Primary exposure time	0.000000	1.7
[mm] SIM translation stage pos	-190.132523	-190.1400660498719			
[mm] SIM translation stage offset	0	0.00754346686406393			
[s] Observation start time (MET)	209626993.184000	209625876.09328			
Observation start date	2004-08-23T05:42:09	2004-08-23T05:24:36			
[s] Observation end time (MET)	209640493.184000	209642134.1315			
Observation end date	2004-08-23T09:27:09	2004-08-23T09:55:34			
Read mode	TIMED	TIMED			

2.3 Aspect

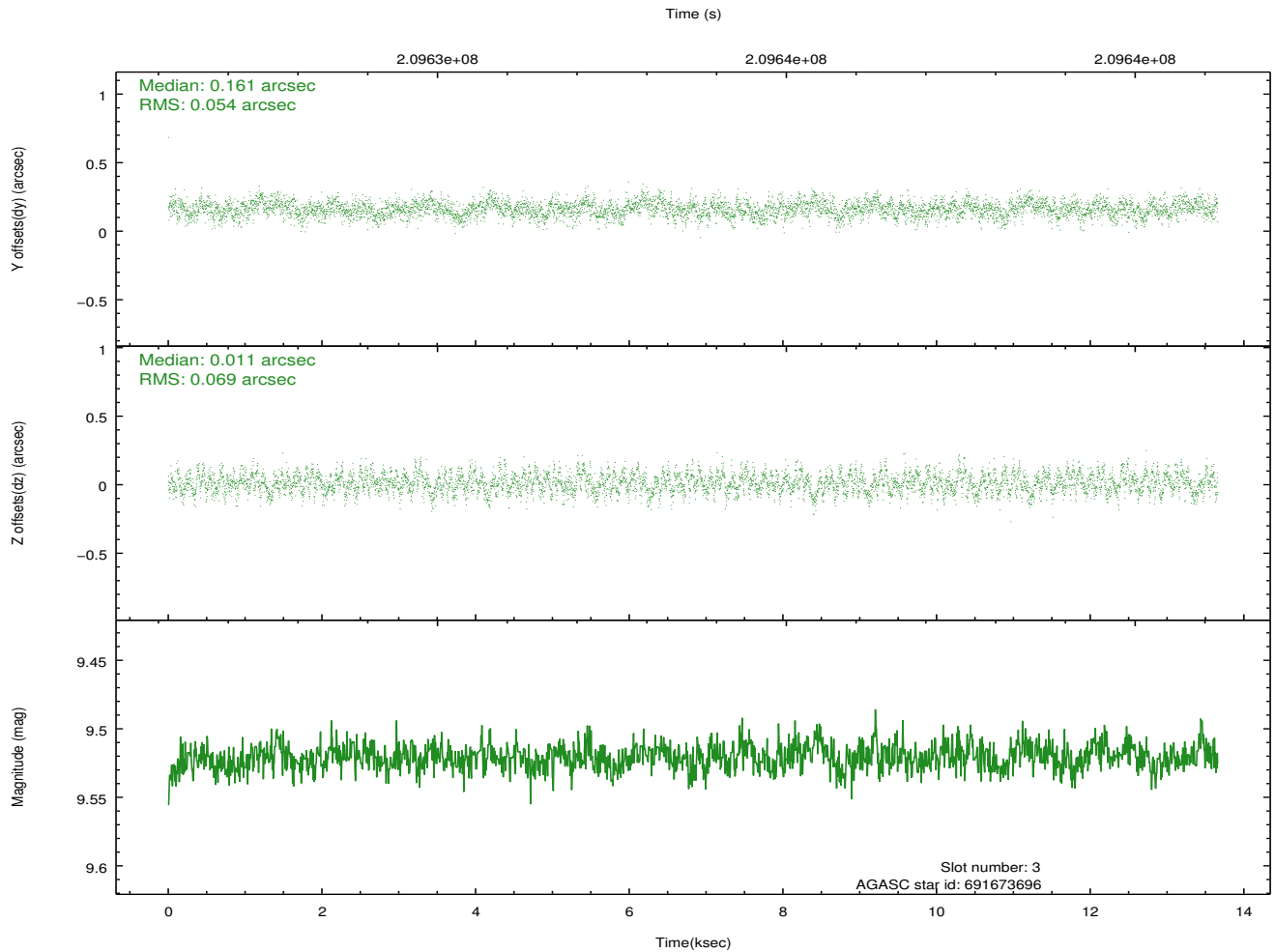
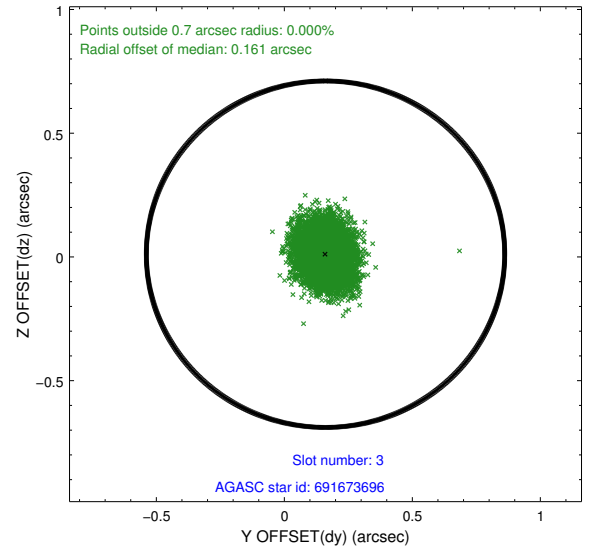
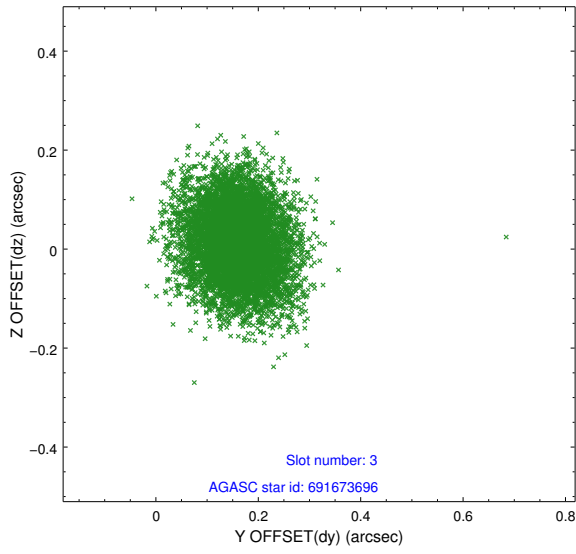


Slot Statistics

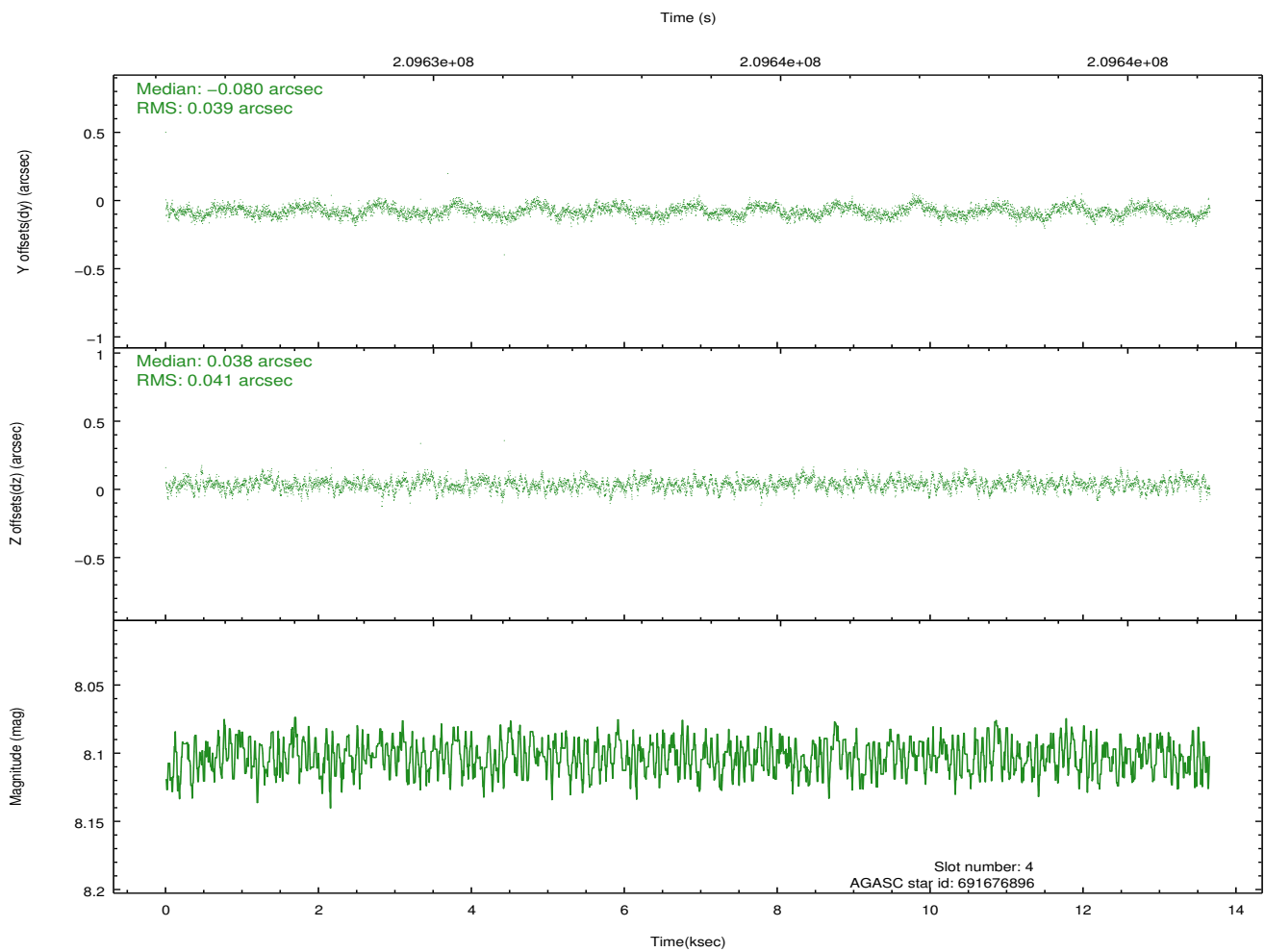
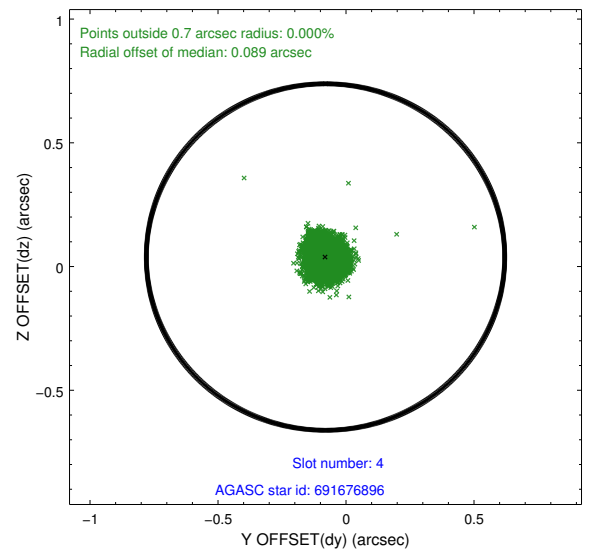
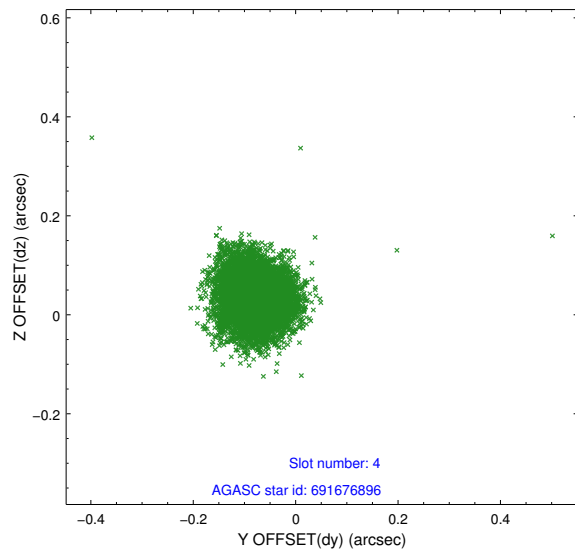
slot	status	id	mag	n_pts	med_dy	med_dz	dr1	dr2	ra	dec	mean_y	mean_z
0	FID	ACIS-S-2	7.10	3331	-0.059	-0.039	0.006	0.010	0.000000	0.000000	-759.95	-1731.60
1	FID	ACIS-S-4	7.21	3332	0.060	0.025	0.007	0.012	0.000000	0.000000	2153.26	176.64
2	FID	ACIS-S-6	7.34	3331	-0.029	0.021	0.008	0.014	0.000000	0.000000	402.47	814.39
3	GUIDE	691673696	9.52	6656	0.161	0.011	0.094	0.151	26.730303	-10.038309	-1139.24	-1277.13
4	GUIDE	691676896	8.10	6660	-0.080	0.038	0.060	0.096	26.776202	-9.599337	409.53	-1629.35
5	GUIDE	691801584	8.74	6659	-0.135	0.141	0.068	0.110	26.853827	-9.497860	739.04	-1947.10
6	GUIDE	691668096	9.30	6657	-0.094	-0.218	0.099	0.161	26.136153	-9.609789	644.58	630.30
7	GUIDE	691667008	10.05	6659	0.149	0.030	0.143	0.226	26.749958	-10.019309	-1079.47	-1354.32

2.4 Star Slots

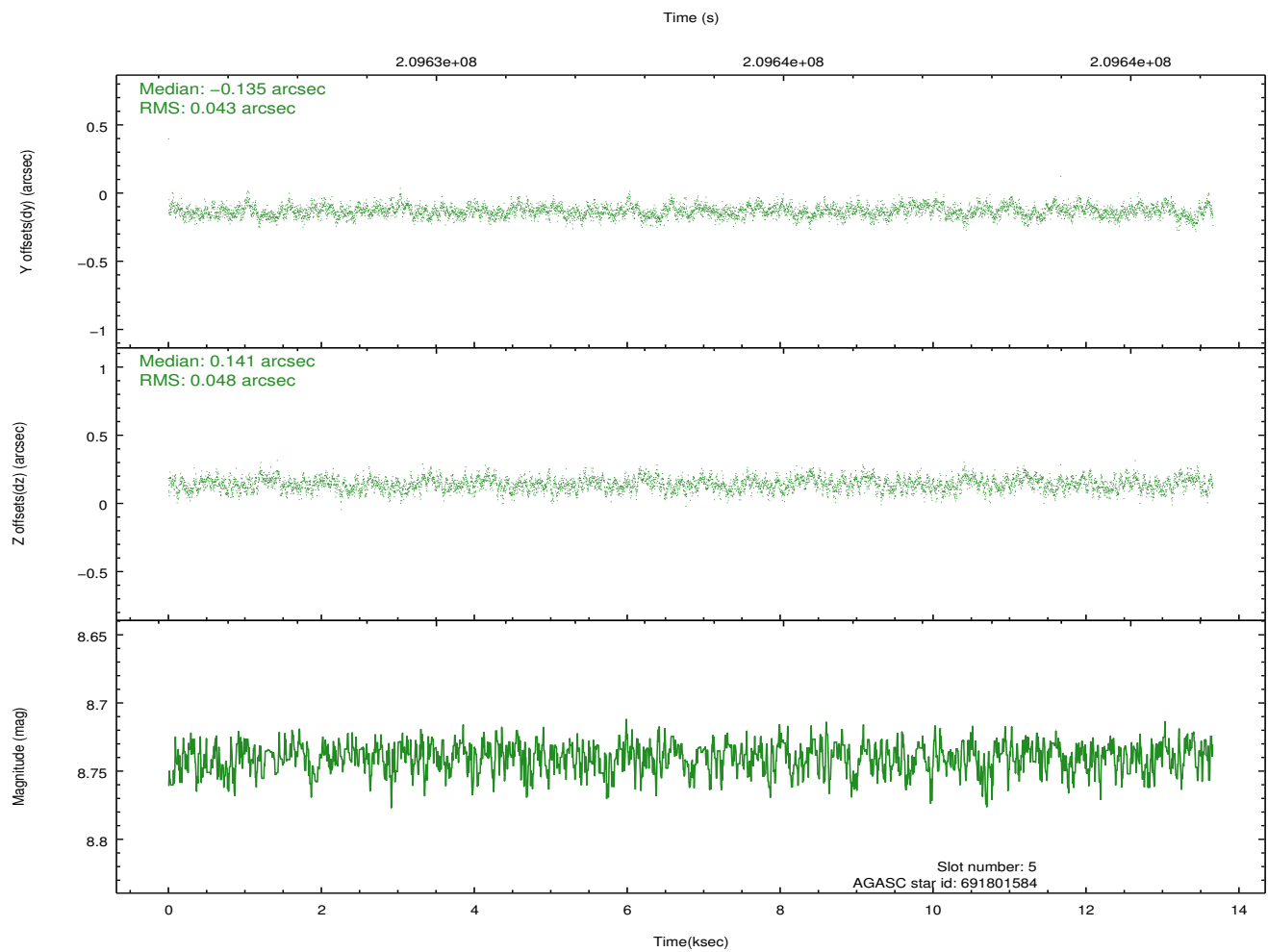
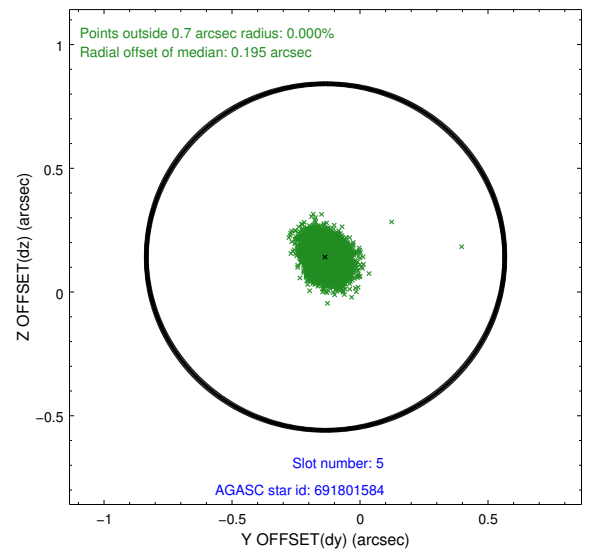
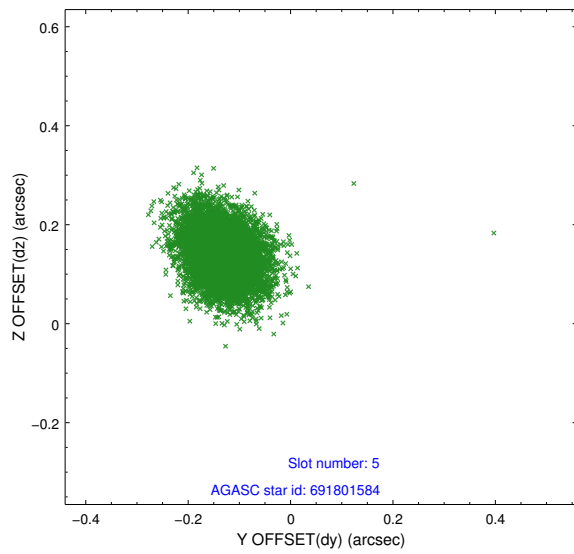
2.4.1 Slot 3



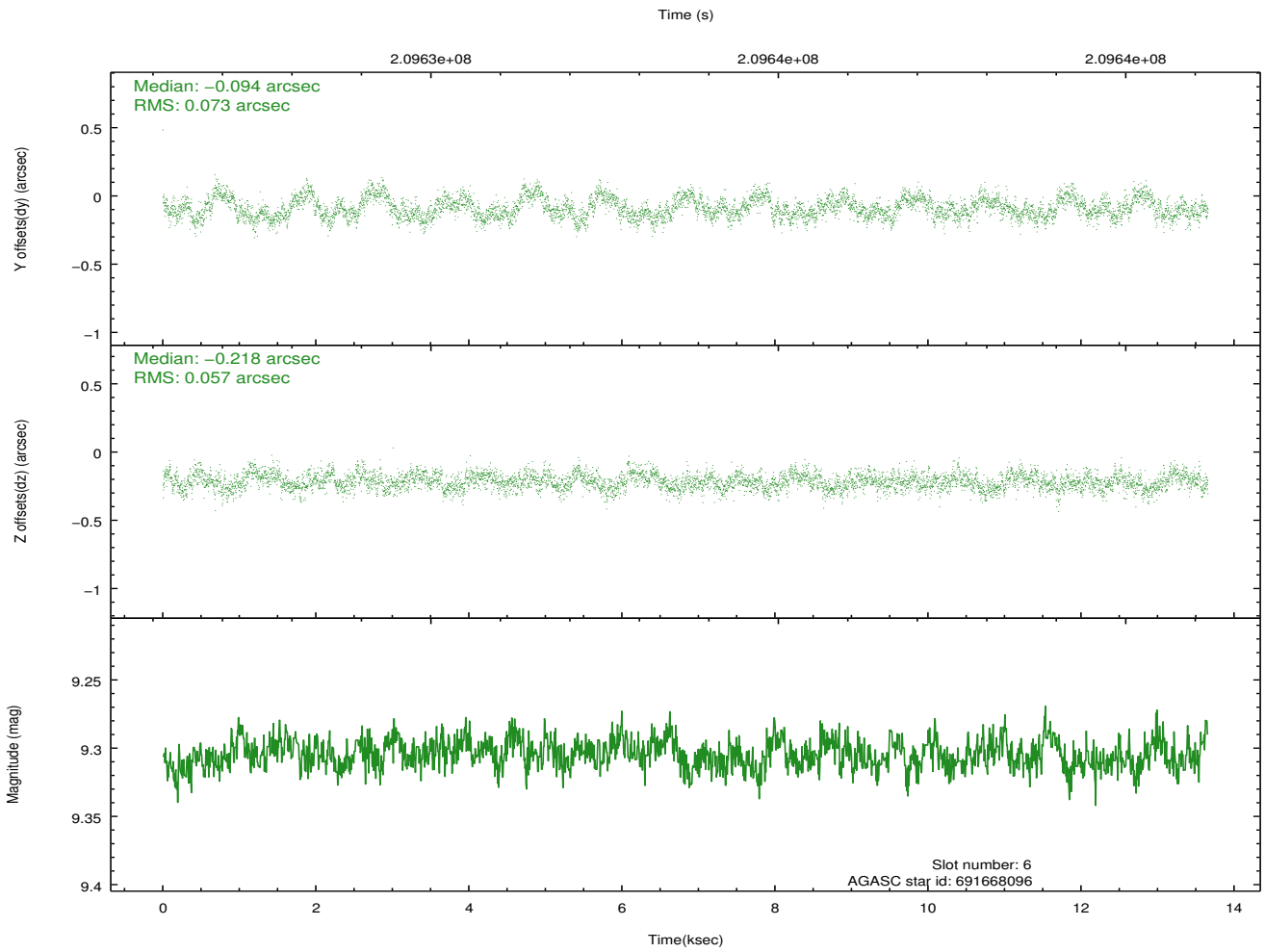
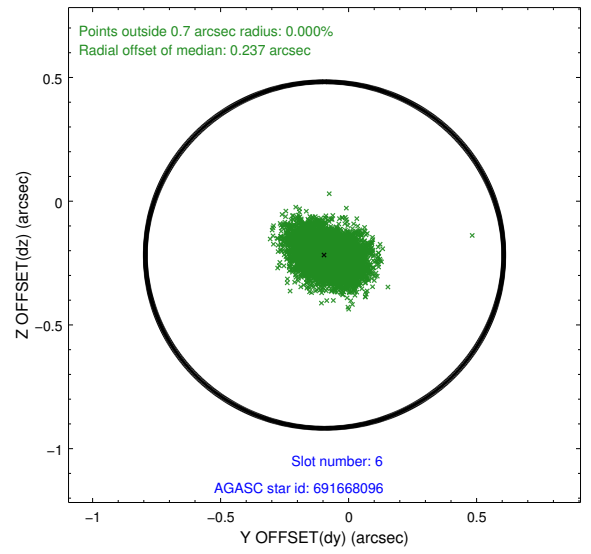
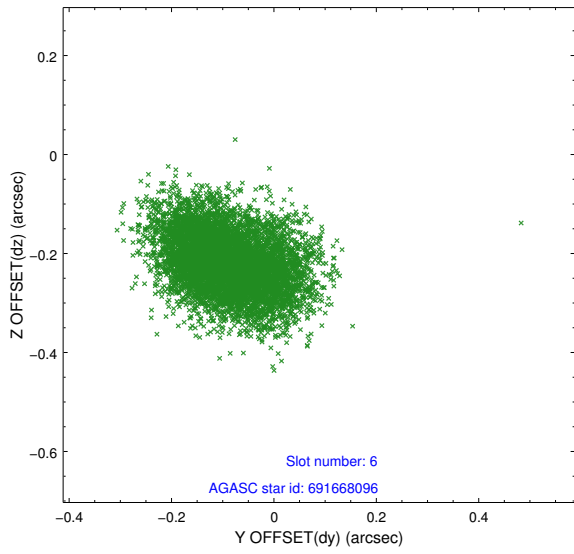
2.4.2 Slot 4



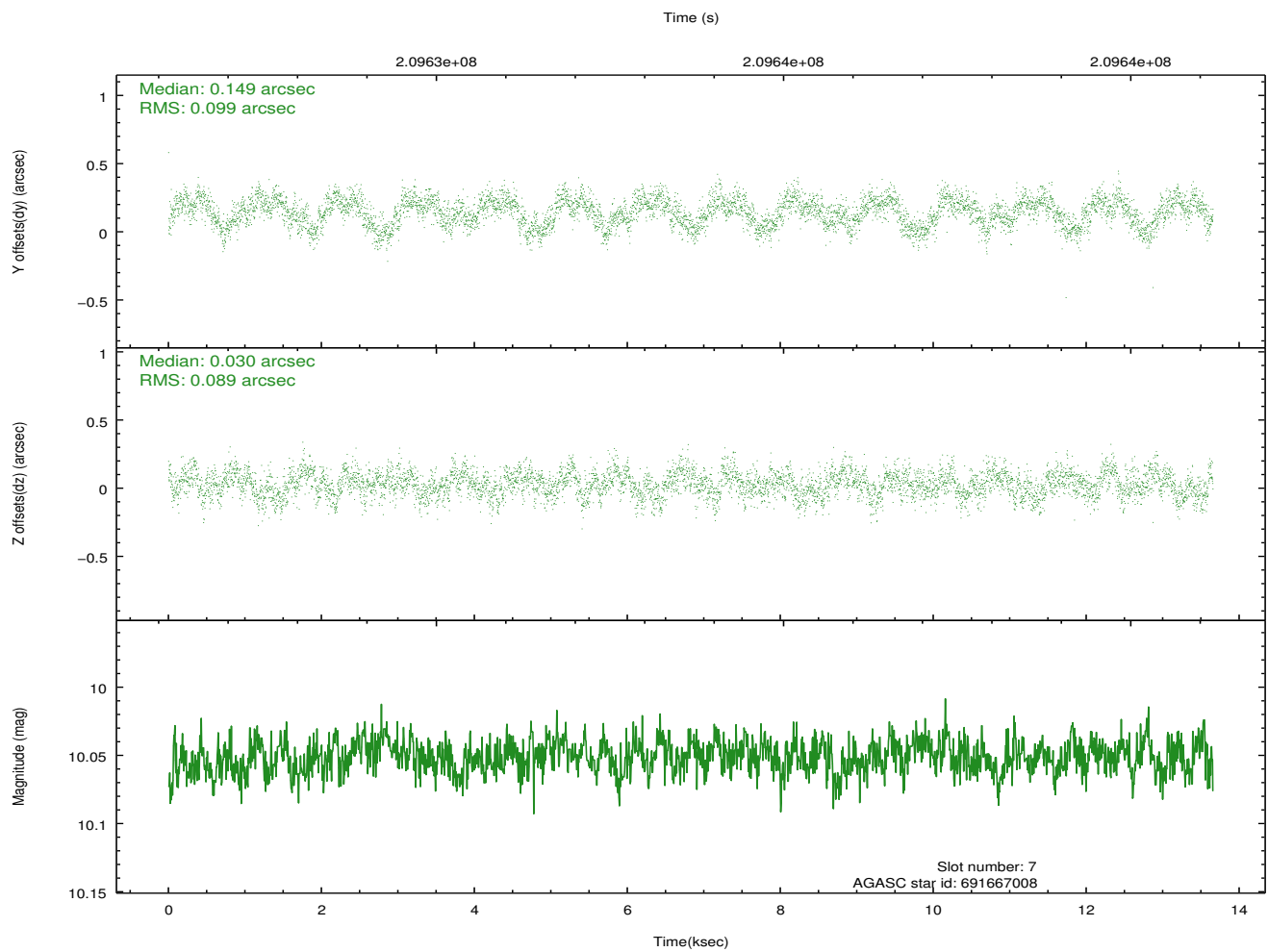
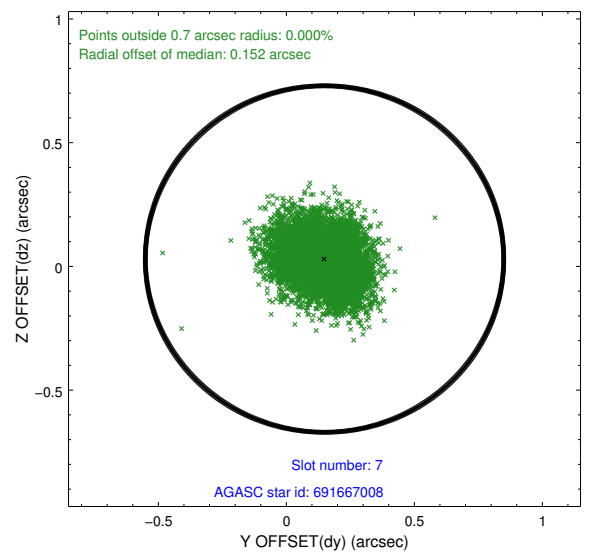
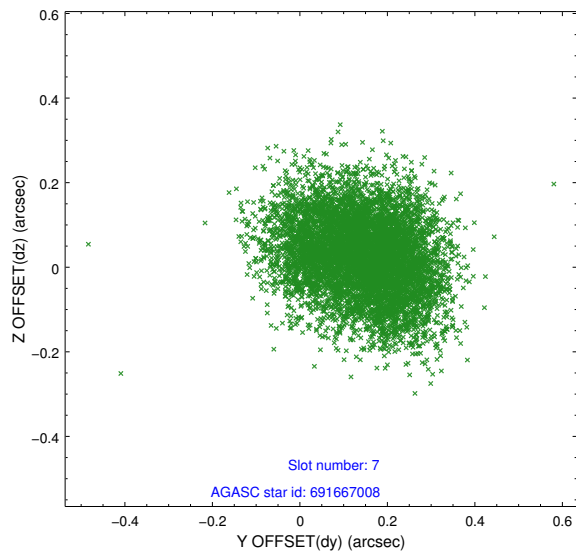
2.4.3 Slot 5



2.4.4 Slot 6

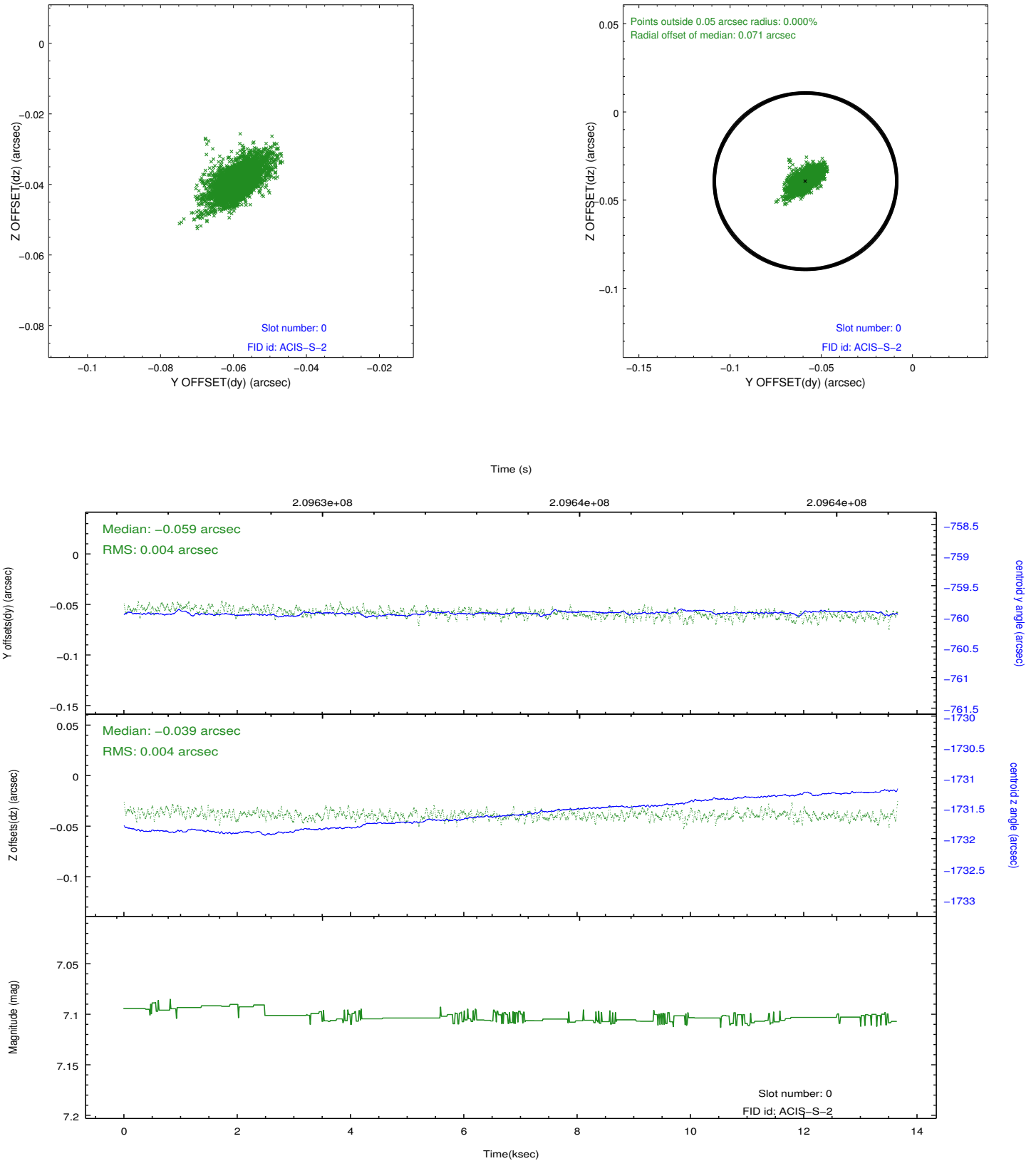


2.4.5 Slot 7

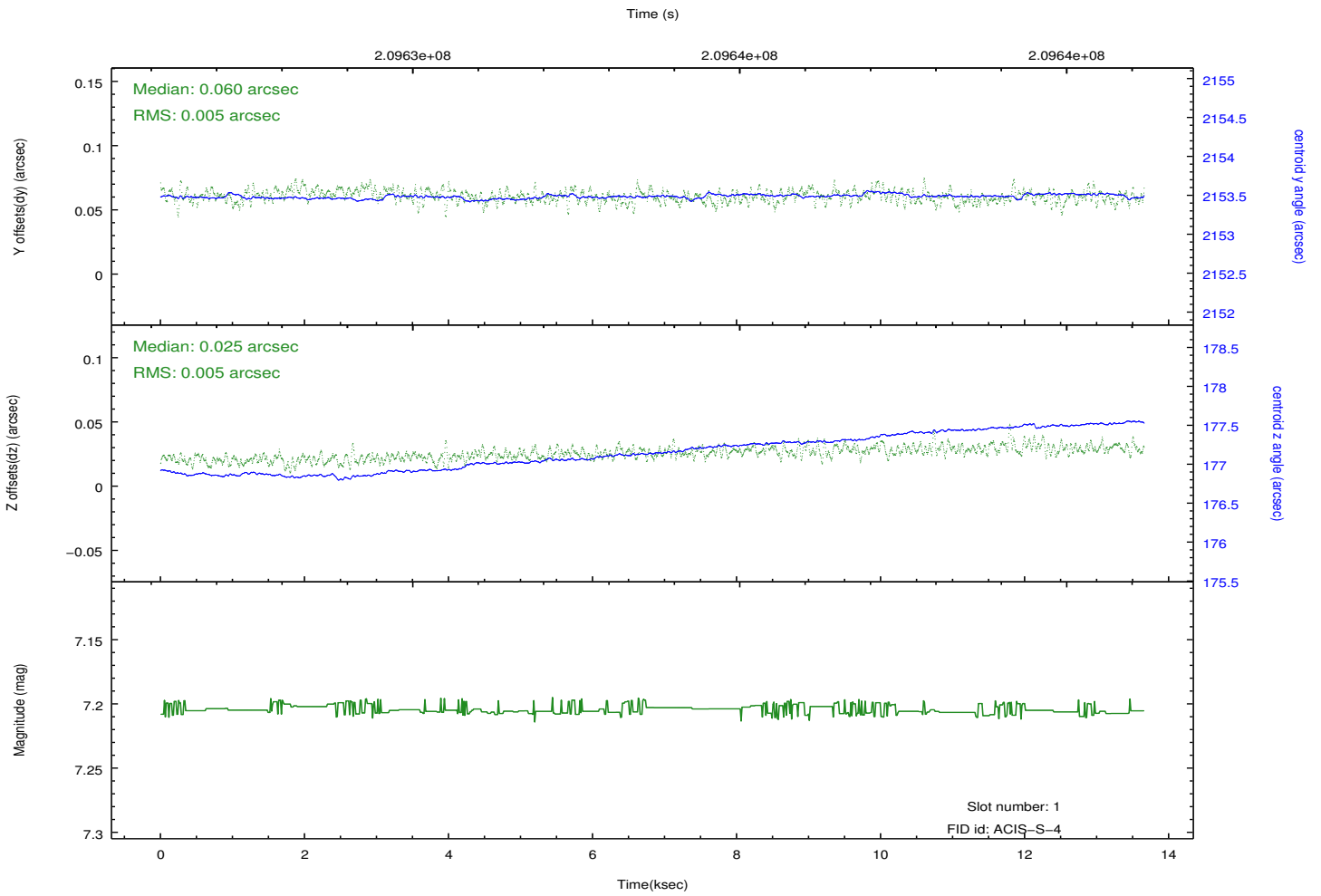
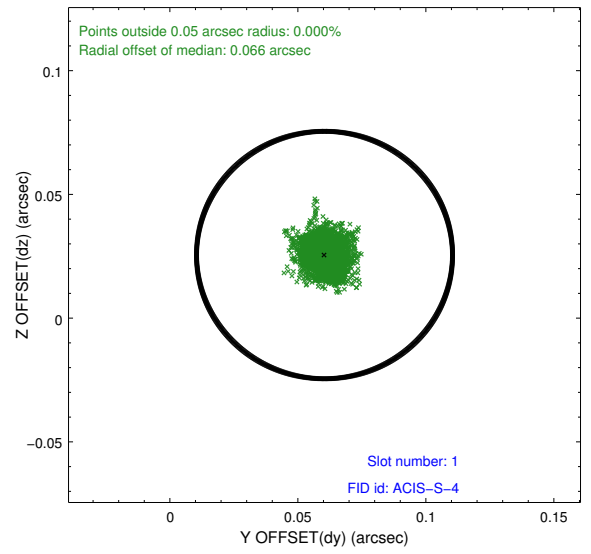
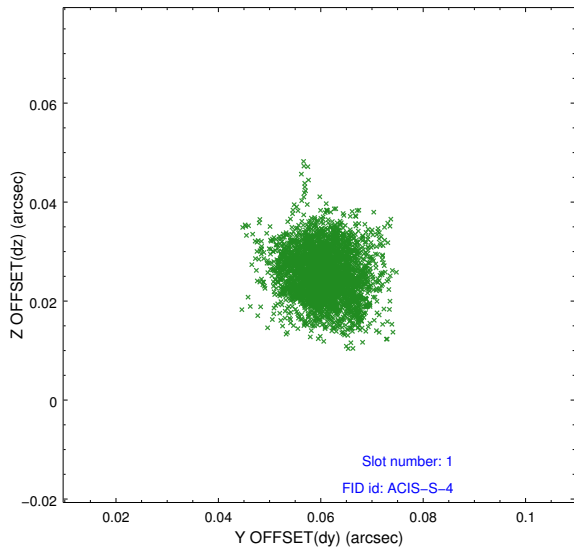


2.5 FID Slots

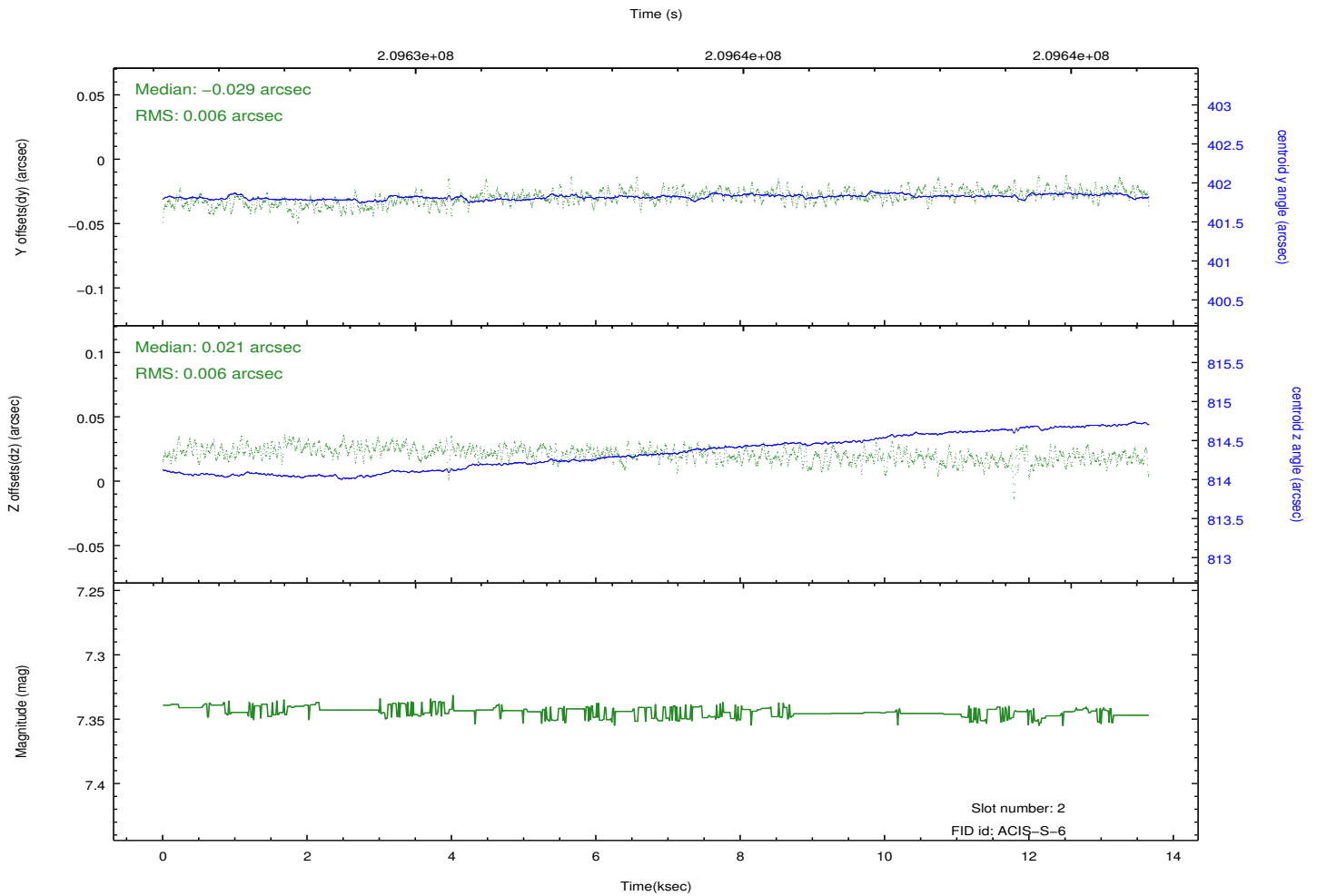
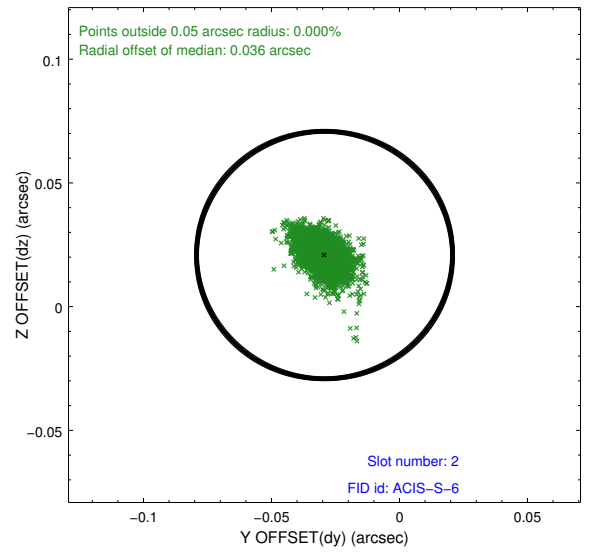
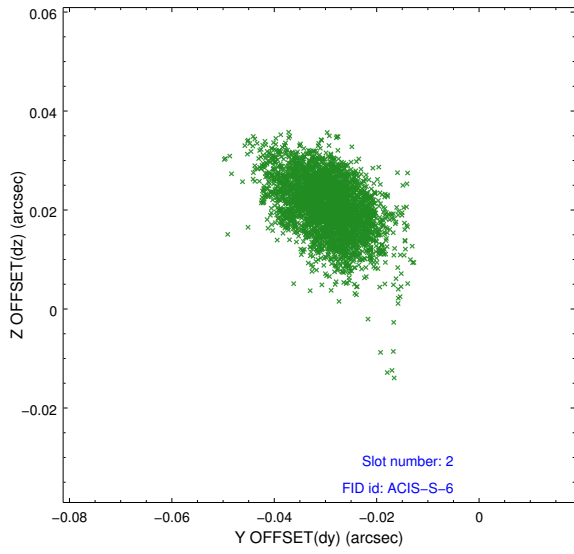
2.5.1 Slot 0



2.5.2 Slot 1



2.5.3 Slot 2



A Summary

A.1 Status

V&V Scientist	Jen Lauer
V&V Date (YYYY-MM-DD)	2012.12.21
V&V Edition	1
V&V Disposition and Status	OK
V&V Charge Time	13.656

A.2 Comments