

V&V Reference Report

L2 ASCDS Version : 8.1.1

Observation 532 - L2 Version 4
Chandra X-Ray Center

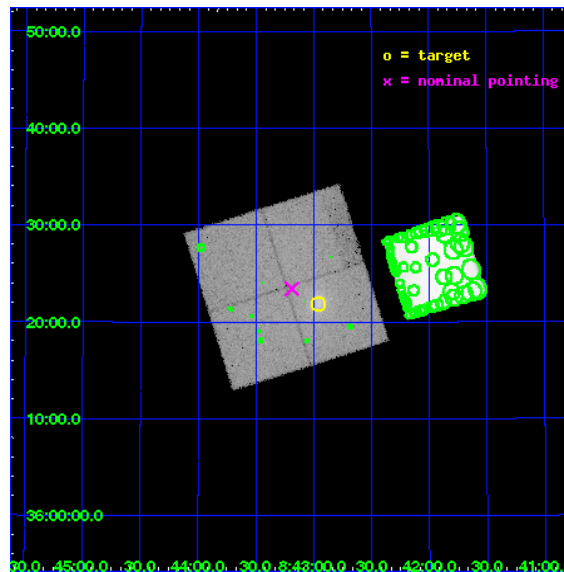
L2 Processing Date : Nov 20 2009

Contents

1	Front	2
2	OBI	3
2.1	OBI	3
2.1.1	Images	3
2.1.2	Bias	3
2.1.3	Parameters	4
2.1.4	Events	4
2.2	Compared Parameters	5
2.3	Aspect	6
2.4	Star Slots	9
2.4.1	Slot 3	9
2.4.2	Slot 4	10
2.4.3	Slot 5	11
2.4.4	Slot 6	12
2.4.5	Slot 7	13
2.5	FID Slots	14
2.5.1	Slot 0	14
2.5.2	Slot 1	15
2.5.3	Slot 2	16
3	Point Sources	17
A	Summary	18
A.1	Status	18
A.2	Comments	18

1 Front

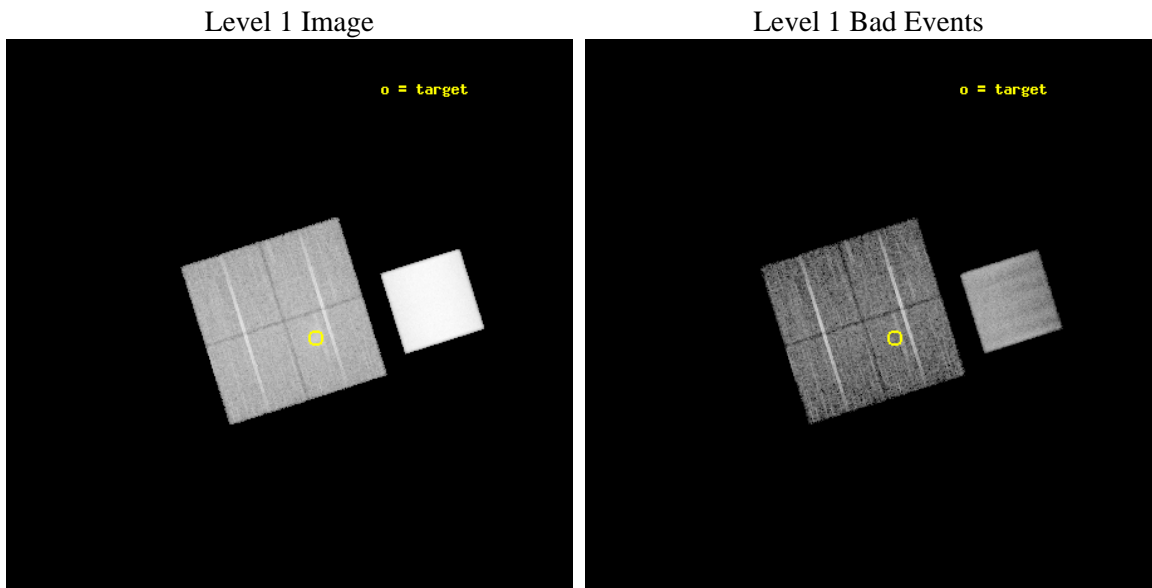
seq_num	800040	Sequence number
obs_id	532	Observation id
title	DETERMINATION OF H0/Q0	Proposal title
observer	DR. LEON VANSPEYBROECK	Principal investigator
object	A697	Source name
dtcycle	0	
cycle	P	events from which exps? Prim/Second/Both
ra_targ	130.740833	Observer's specified target RA
dec_targ	36.365	Observer's specified target Dec
ra_nom	130.79715401817	Nominal RA
dec_nom	36.390605647712	Nominal Dec
roll_nom	72.474508680657	Nominal Roll
revision	4	Processing version of data
ontime	8069.3973067105	Sum of GTIs [s]
livetime	7967.2177392052	Livetime [s]
ontime0	8082.3618558422	Sum of GTIs [s]
ontime1	8199.0356850624	Sum of GTIs [s]
ontime2	7994.8560596406	Sum of GTIs [s]
ontime3	8069.3973067105	Sum of GTIs [s]
ontime7	8098.5676347837	Sum of GTIs [s]
l2events	928777	Number of level 2 events



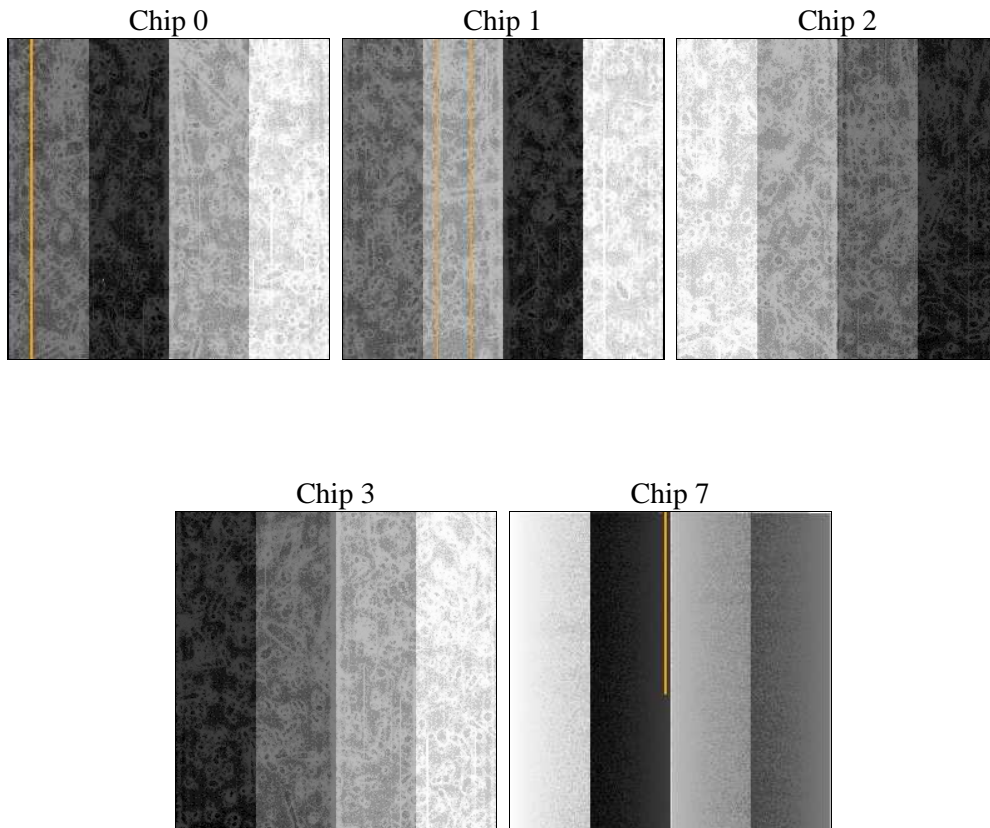
2 OBI

2.1 OBI

2.1.1 Images



2.1.2 Bias



2.1.3 Parameters

obi_num	1	Obi number	sched_exp_time	10000.000000	Scheduled observation exposure time
ascdsver	8.1.1	ASCDS version number	ontime	8069.3973067105	Sum of GTIs [s]
caldbver	4.1.4	 	ontime0	8082.3618558422	Sum of GTIs [s]
date	2009-11-20T11:54:28	Date and time of file creation	ontime1	8199.0356850624	Sum of GTIs [s]
revision	3	Processing version of data	ontime2	7994.8560596406	Sum of GTIs [s]
			ontime3	8069.3973067105	Sum of GTIs [s]
			ontime7	8098.5676347837	Sum of GTIs [s]
			l1events	1331676	Number of level 1 events

2.1.4 Events

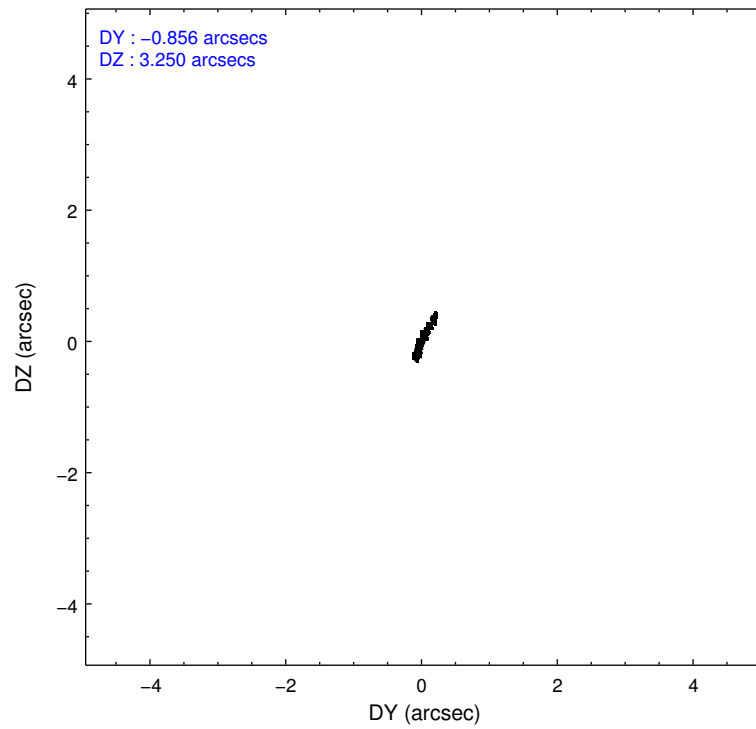
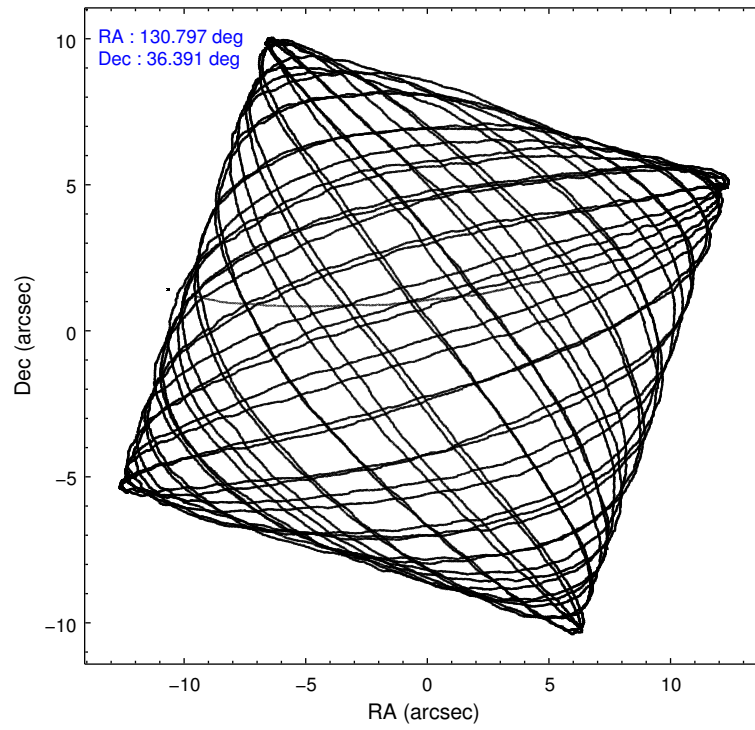
	ccd 0	ccd 1	ccd 2	ccd 3	ccd 7
level 1 events	93709	97350	95870	104564	940183
rejected events	61360	62070	64572	64218	139628
rejected %	65%	63%	67%	61%	14%

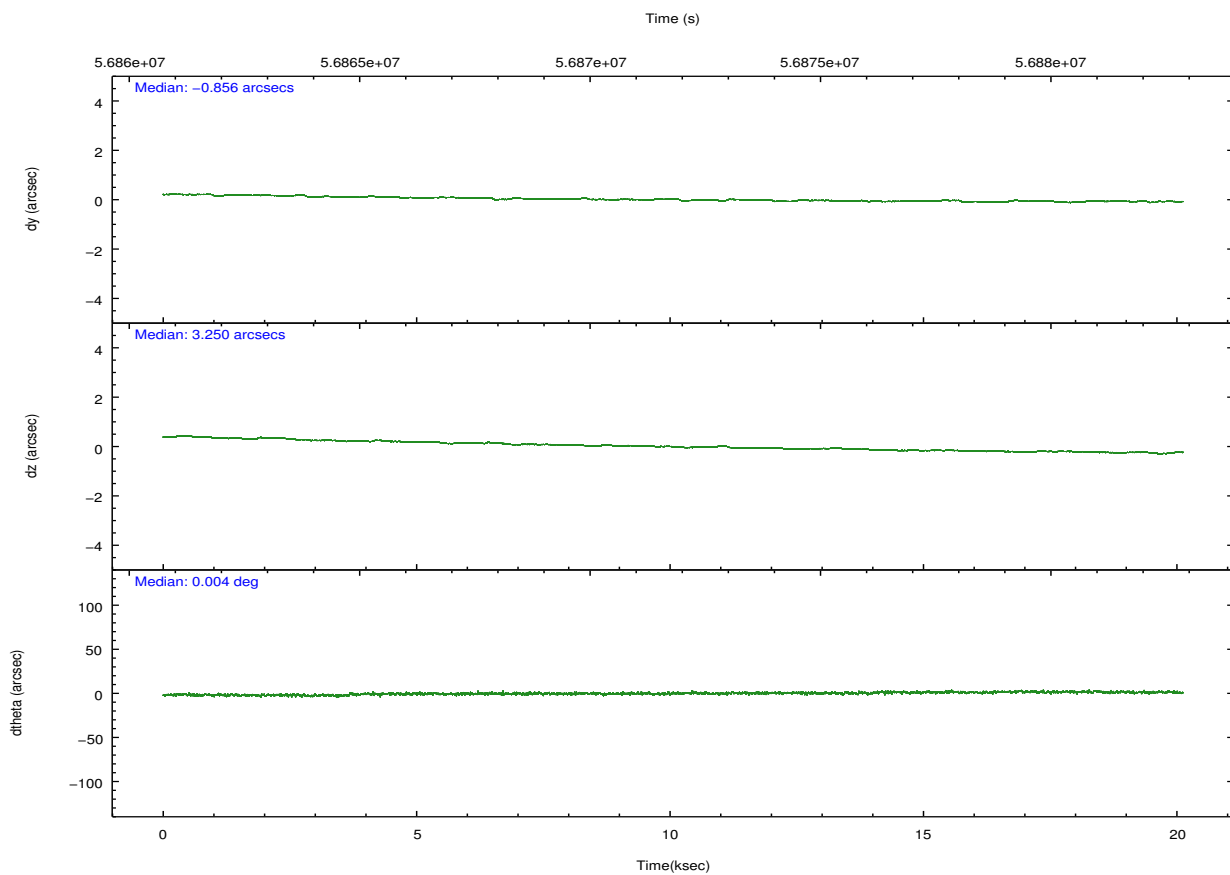
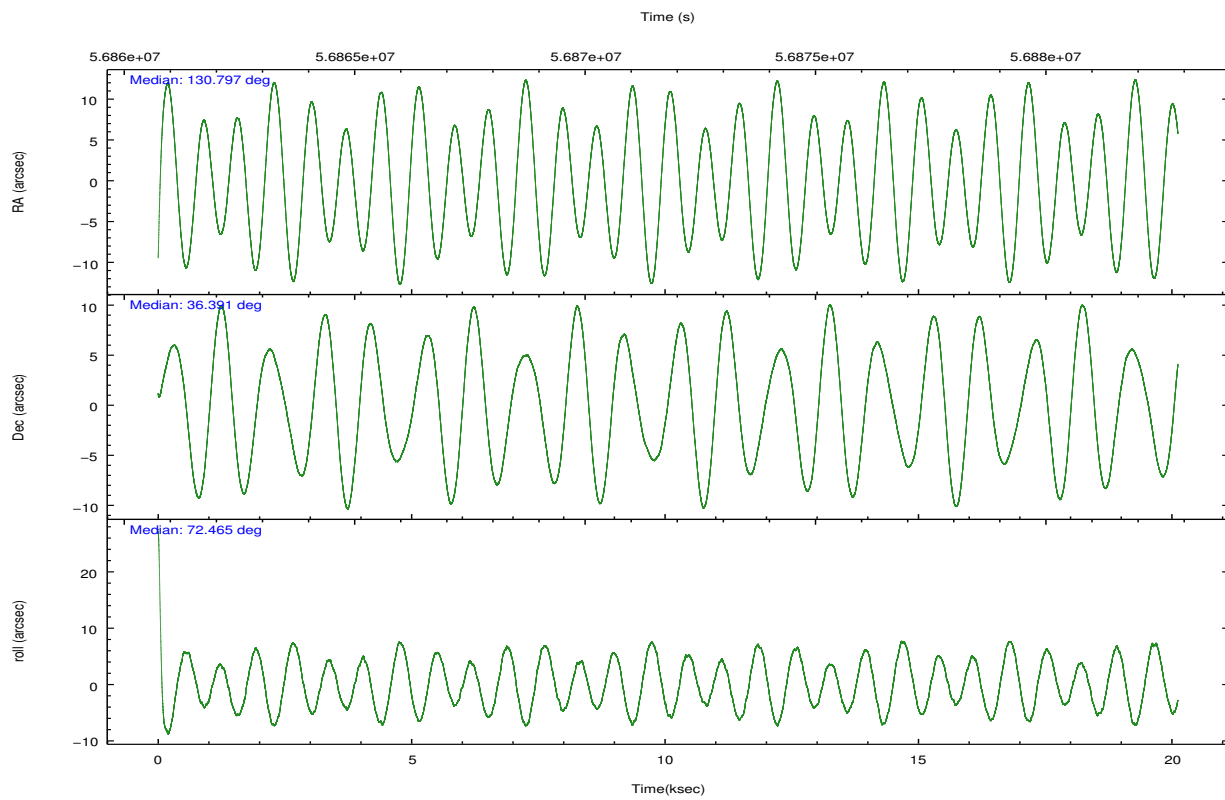
	ccd 0	ccd 1	ccd 2	ccd 3	ccd 7
grade 0 events	10681	11764	9881	13975	102013
	11%	12%	10%	13%	10%
grade 1 events	36	56	30	40	267
	0%	0%	0%	0%	0%
grade 2 events	17890	19058	17809	22322	158249
	19%	19%	18%	21%	16%
grade 3 events	683	786	527	694	57058
	0%	0%	0%	0%	6%
grade 4 events	666	786	584	708	54694
	0%	0%	0%	0%	5%
grade 5 events	1395	1527	1243	1385	11723
	1%	1%	1%	1%	1%
grade 6 events	2438	2891	2508	2658	429306
	2%	2%	2%	2%	45%
grade 7 events	59920	60482	63288	62782	126873
	63%	62%	66%	60%	13%

2.2 Compared Parameters

Parameter	Planned	Actual	Parameter	Planned	Actual
Instrument	ACIS	ACIS	Obspar format version number	6	6
Detector	ACIS-01237	ACIS-01237	Obspar file type	PREDICTED	ACTUAL
Grating	NONE	NONE	Obspar update status	NONE	UPDATED
Data mode	FAINT	FAINT	Number of optional ACIS chips dropped	0	0
Observation mode	POINTING	POINTING	On-chip summing requested	N	N
Pointing RA	130.804082	130.7971540181681	Subarray requested	NONE	NONE
Pointing Dec	36.363418	36.39060564771158	Alternating exposures requested	N	N
Pointing Roll	72.261703	72.47450868065654	Primary exposure time	0.000000	3.2
SIM focus pos (mm)	-0.782348	-0.7809083437167272			
SIM defocus (mm)	0	0.001439871863259334			
SIM translation stage pos (mm)	-233.592463	-233.5874344608287			
SIM translation stage offset (mm)	0	-0.005018542100998502			
Observation start time	56862219.184000	56861159.323353			
Observation start date	1999-10-21T03:02:35	1999-10-21T02:45:59			
Observation end time	56872219.184000	56882173.361611			
Observation end date	1999-10-21T05:49:15	1999-10-21T08:36:13			
Read mode	TIMED	TIMED			

2.3 Aspect



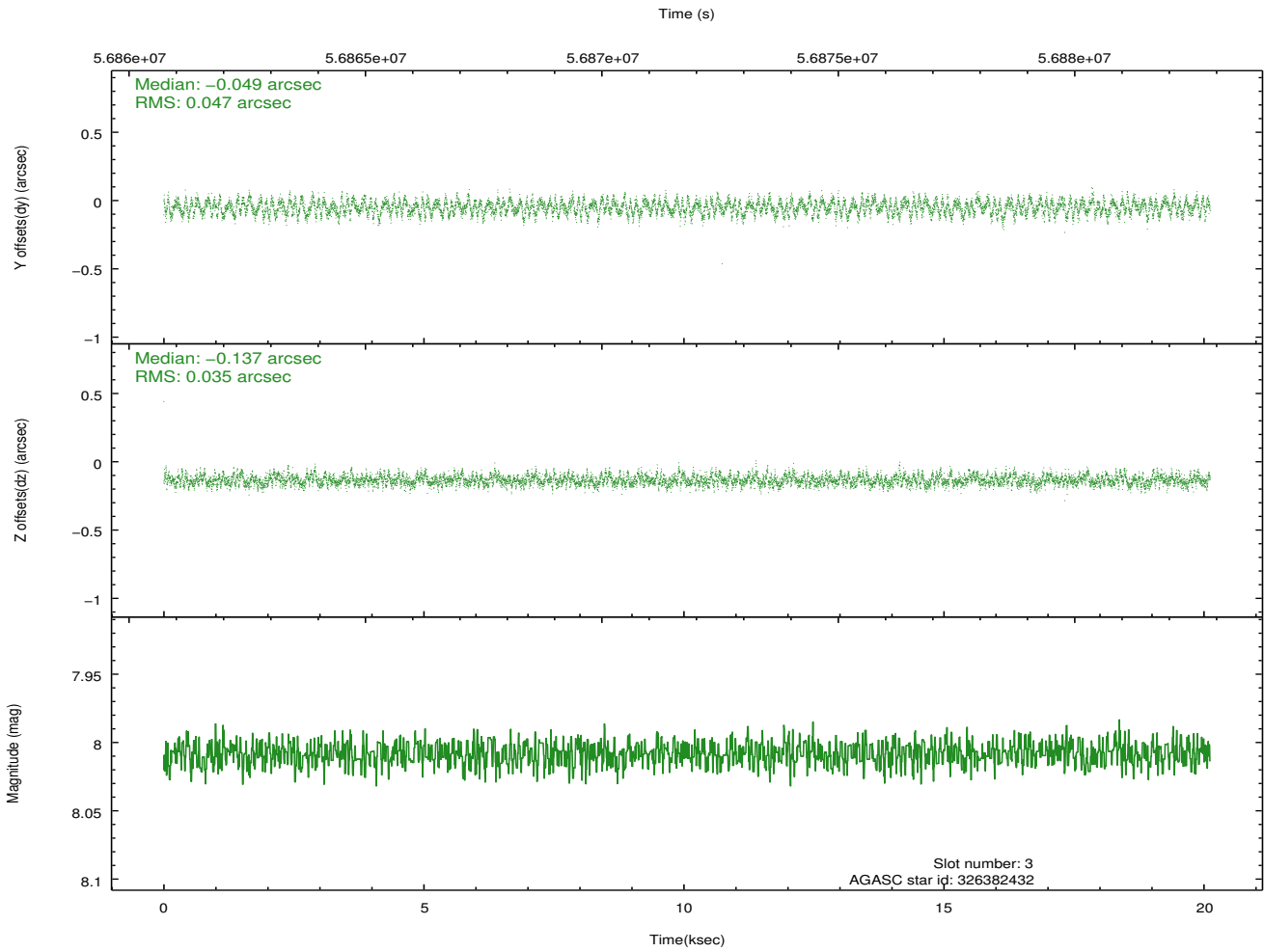
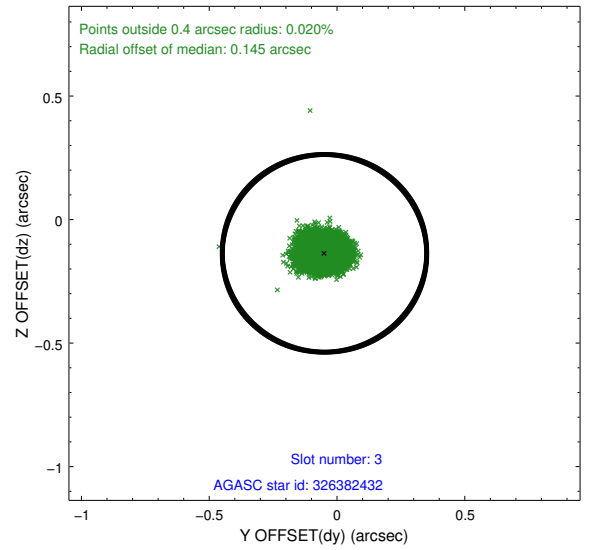
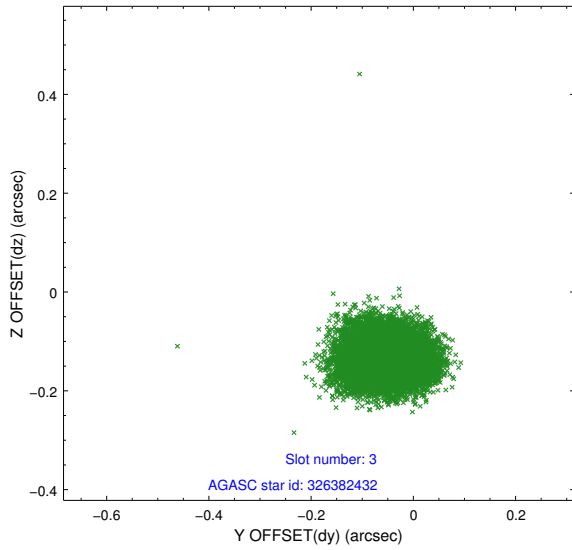


Slot Statistics

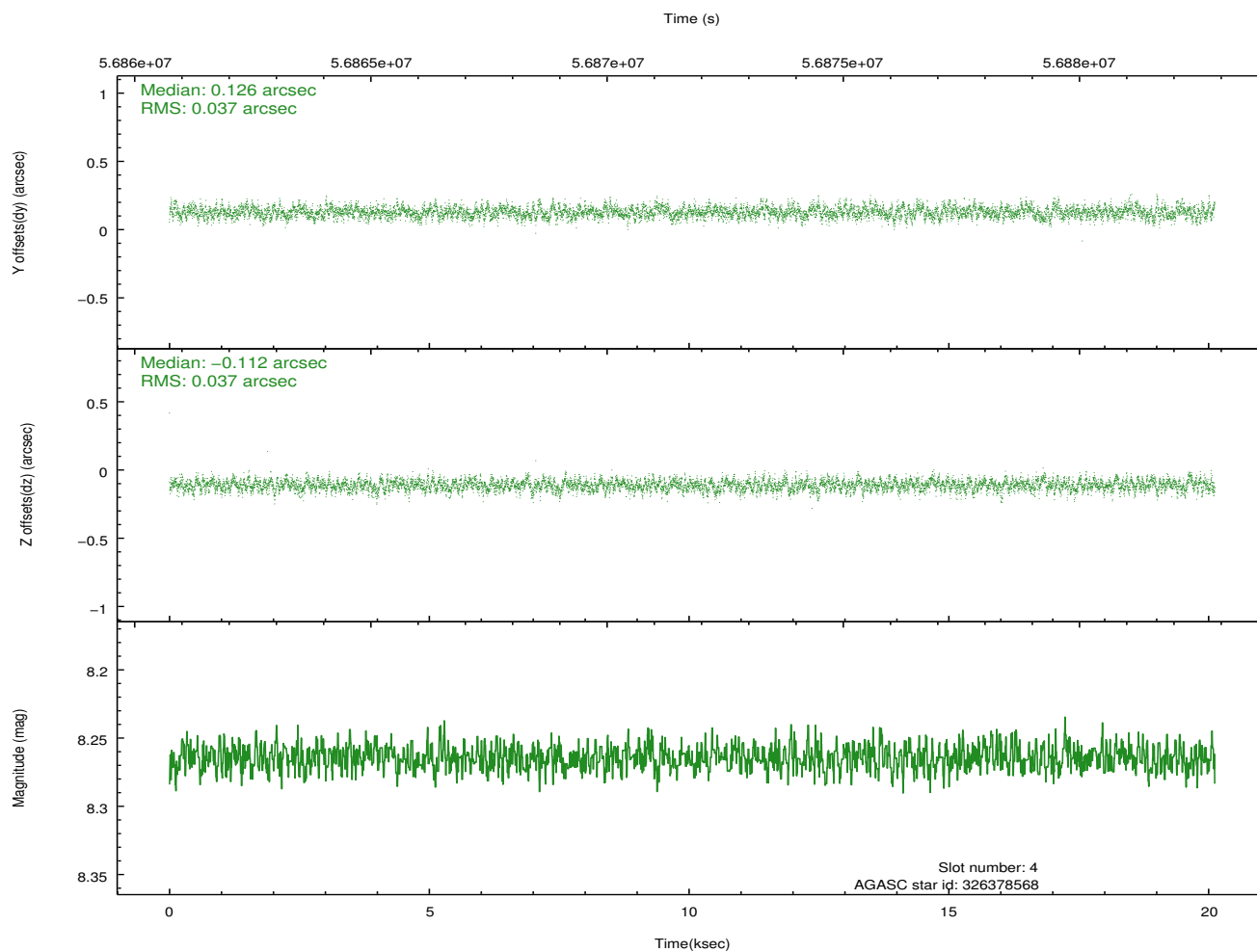
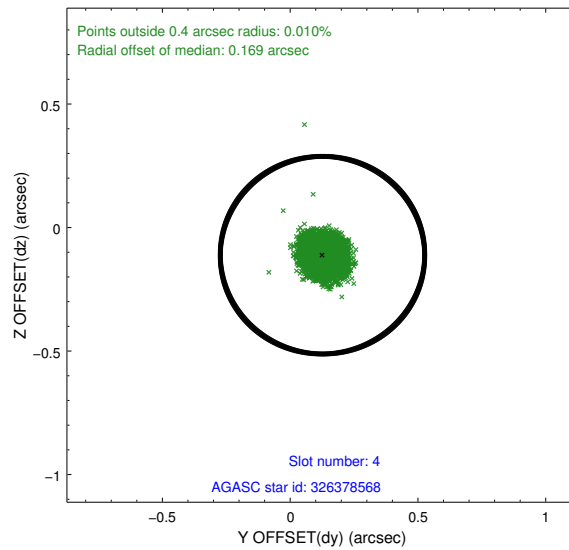
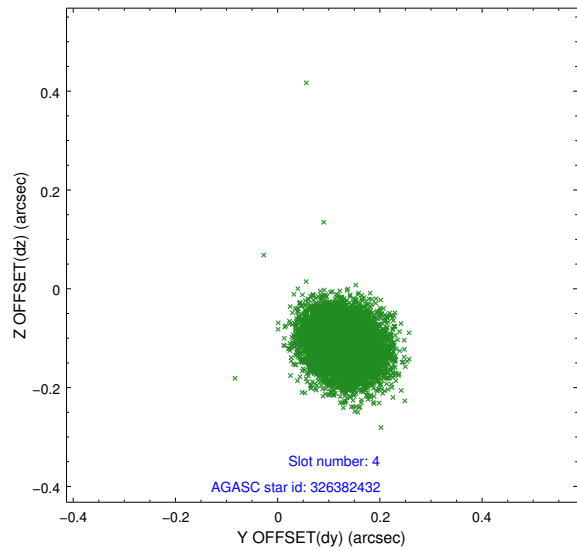
slot	status	id	mag	n_pts	med_dy	med_dz	dr1	dr2	ra	dec	mean_y	mean_z
0	FID	ACIS-I-2	7.20	9815	-0.026	0.044	0.014	0.033	0.000000	0.000000	-753.55	-832.80
1	FID	ACIS-I-4	7.25	9814	0.105	-0.026	0.014	0.023	0.000000	0.000000	2160.82	1072.99
2	FID	ACIS-I-6	7.27	9813	-0.181	0.043	0.018	0.027	0.000000	0.000000	406.65	1715.44
3	GUIDE	326382432	8.01	9815	-0.049	-0.137	0.063	0.098	130.541837	36.474054	148.45	845.16
4	GUIDE	326378568	8.26	9814	0.126	-0.112	0.056	0.091	130.277846	36.185317	-1073.06	1262.61
5	GUIDE	326372800	8.95	9812	0.090	0.329	0.085	0.134	131.462360	35.854525	-1153.59	-2384.83
6	GUIDE	326370672	9.64	9801	-0.126	0.298	0.092	0.148	131.697537	36.647659	1772.02	-2141.65
7	GUIDE	326382016	9.63	9809	-0.042	-0.378	0.101	0.160	130.062959	36.685792	460.71	2393.96

2.4 Star Slots

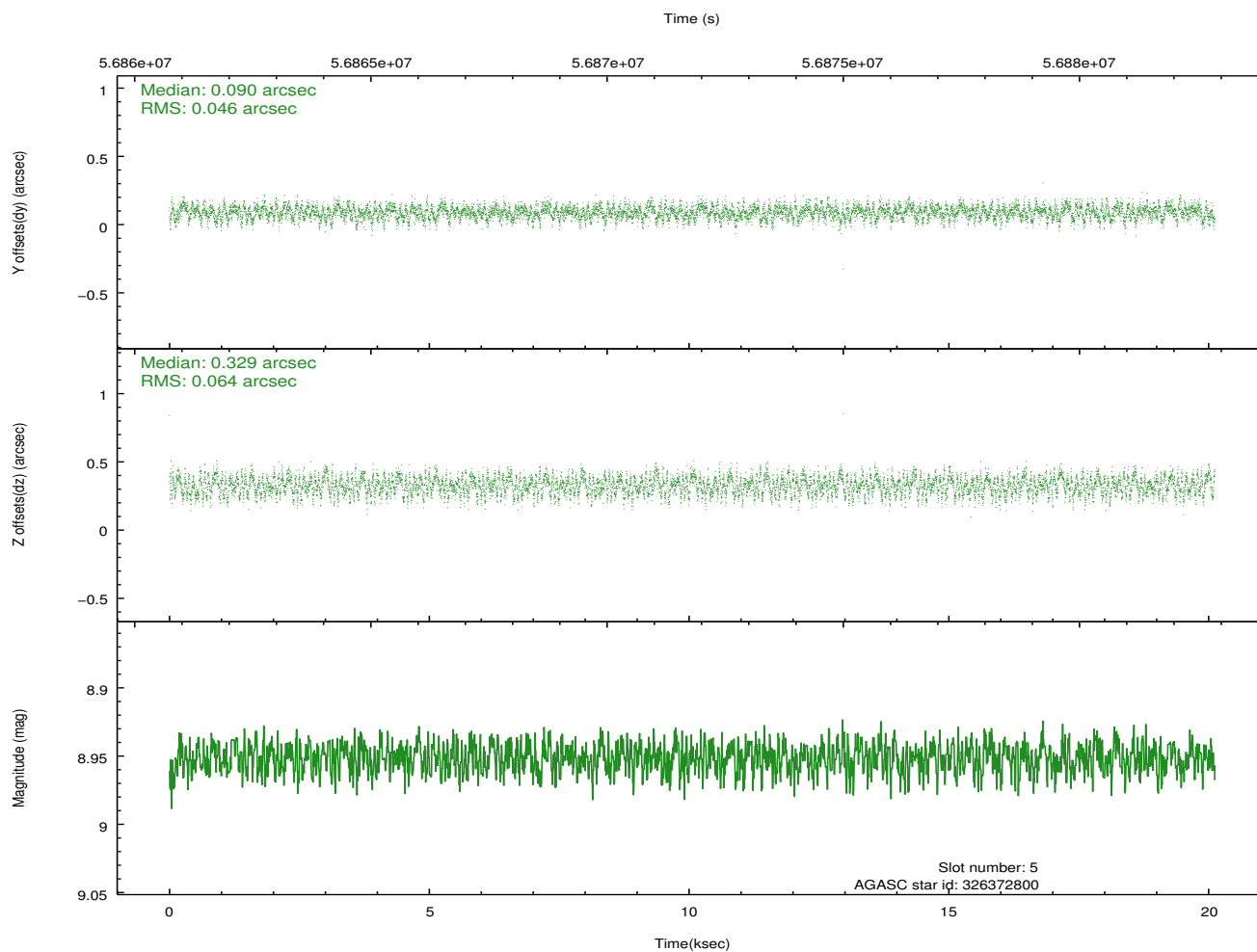
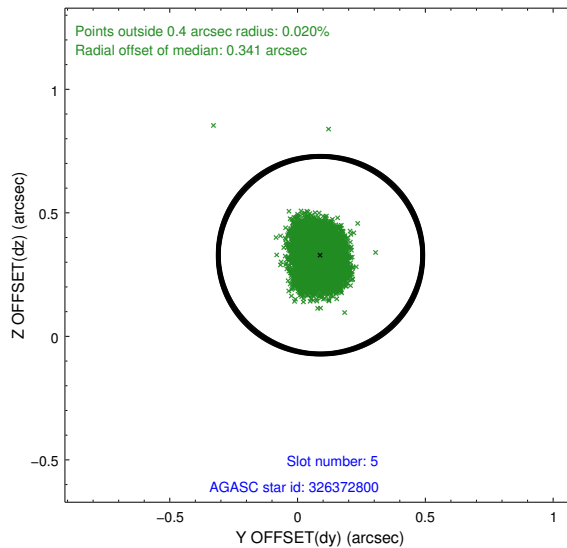
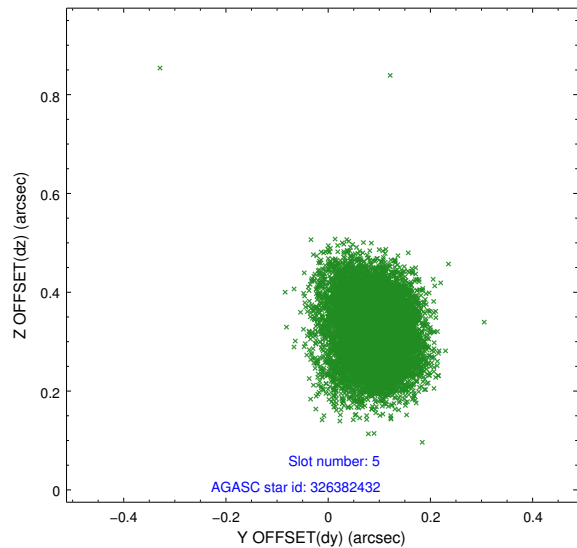
2.4.1 Slot 3



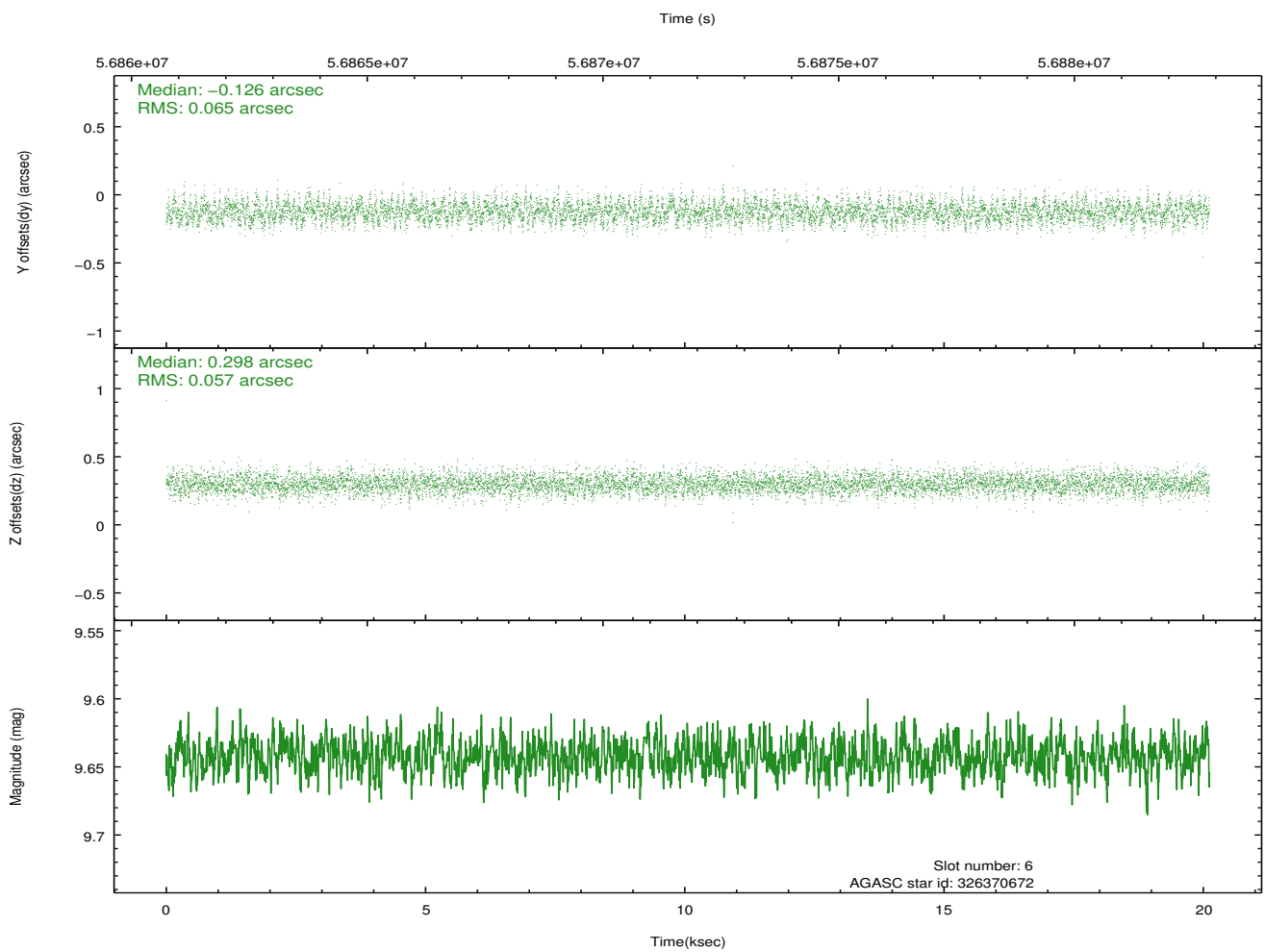
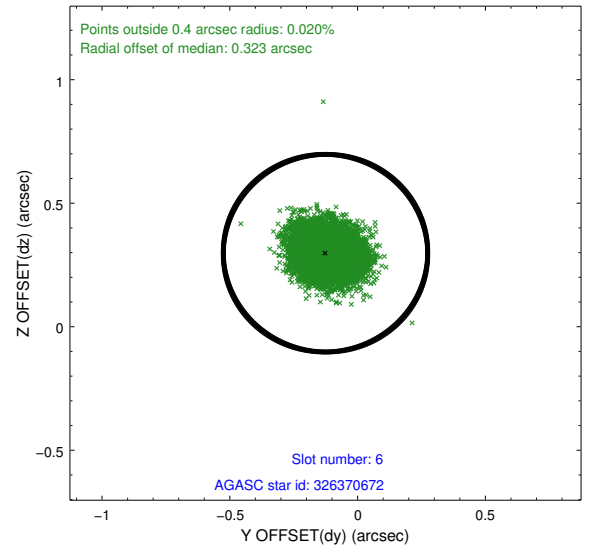
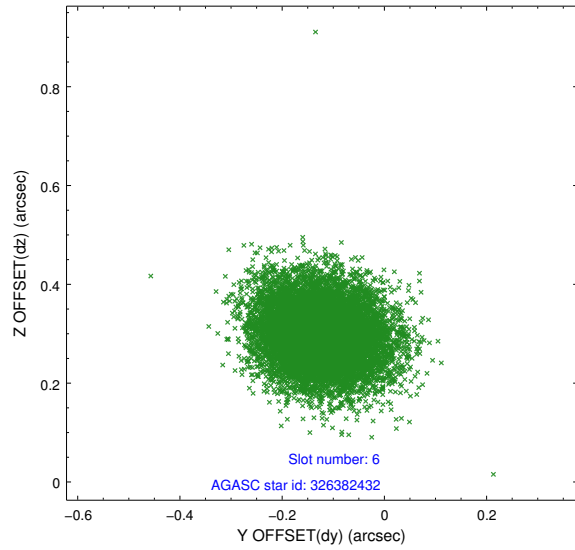
2.4.2 Slot 4



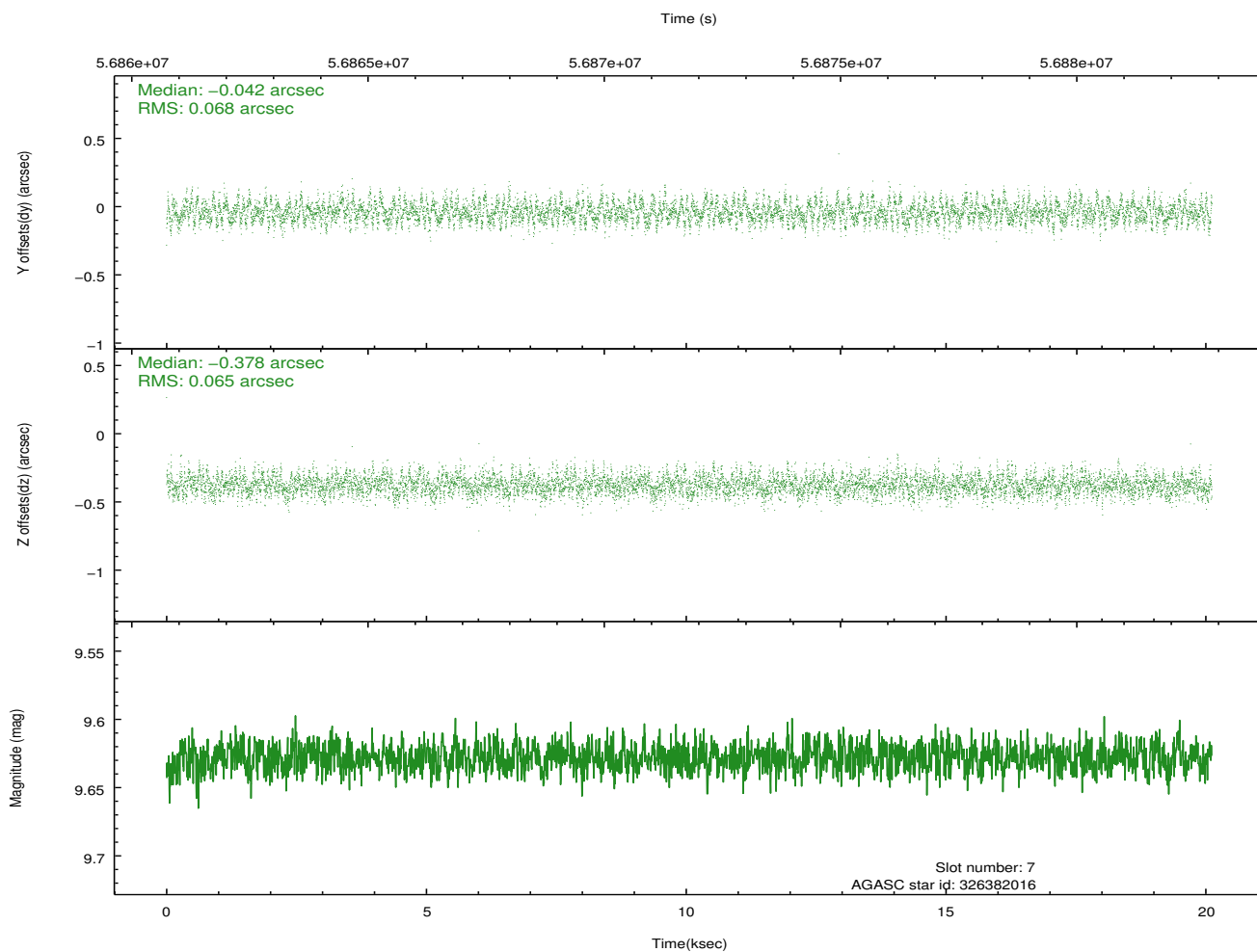
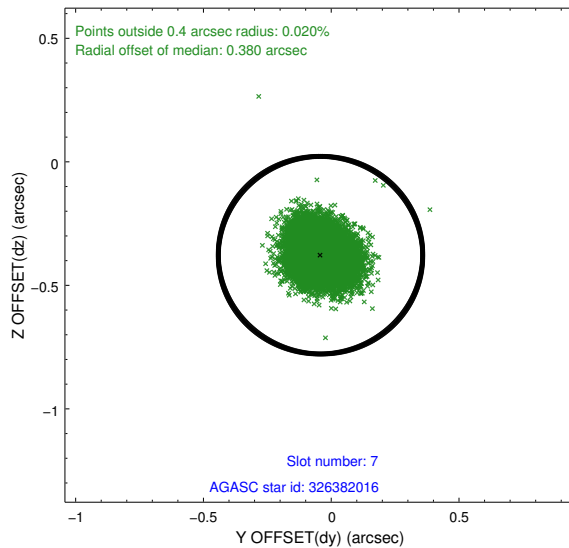
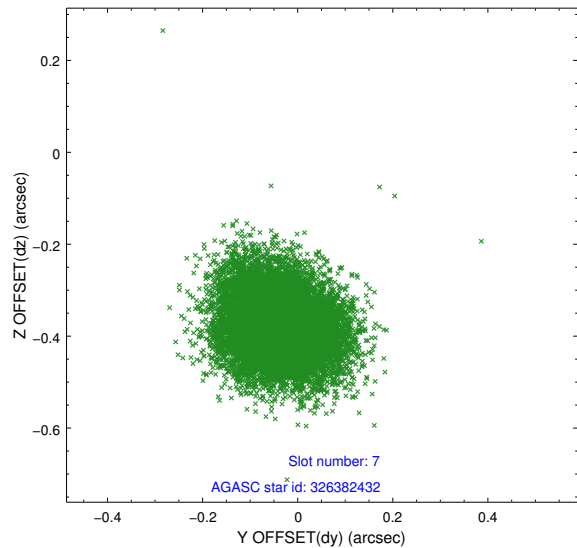
2.4.3 Slot 5



2.4.4 Slot 6

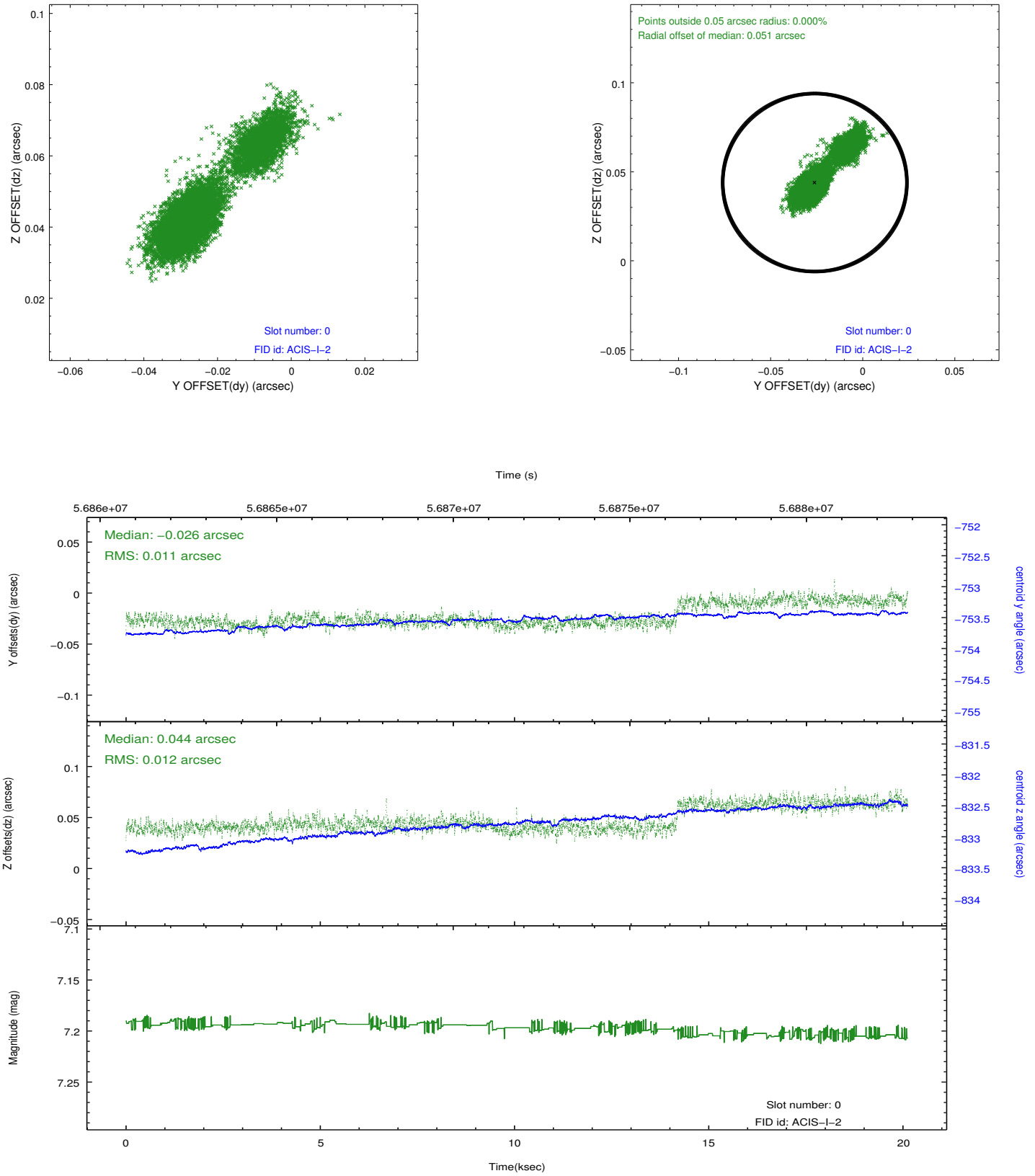


2.4.5 Slot 7

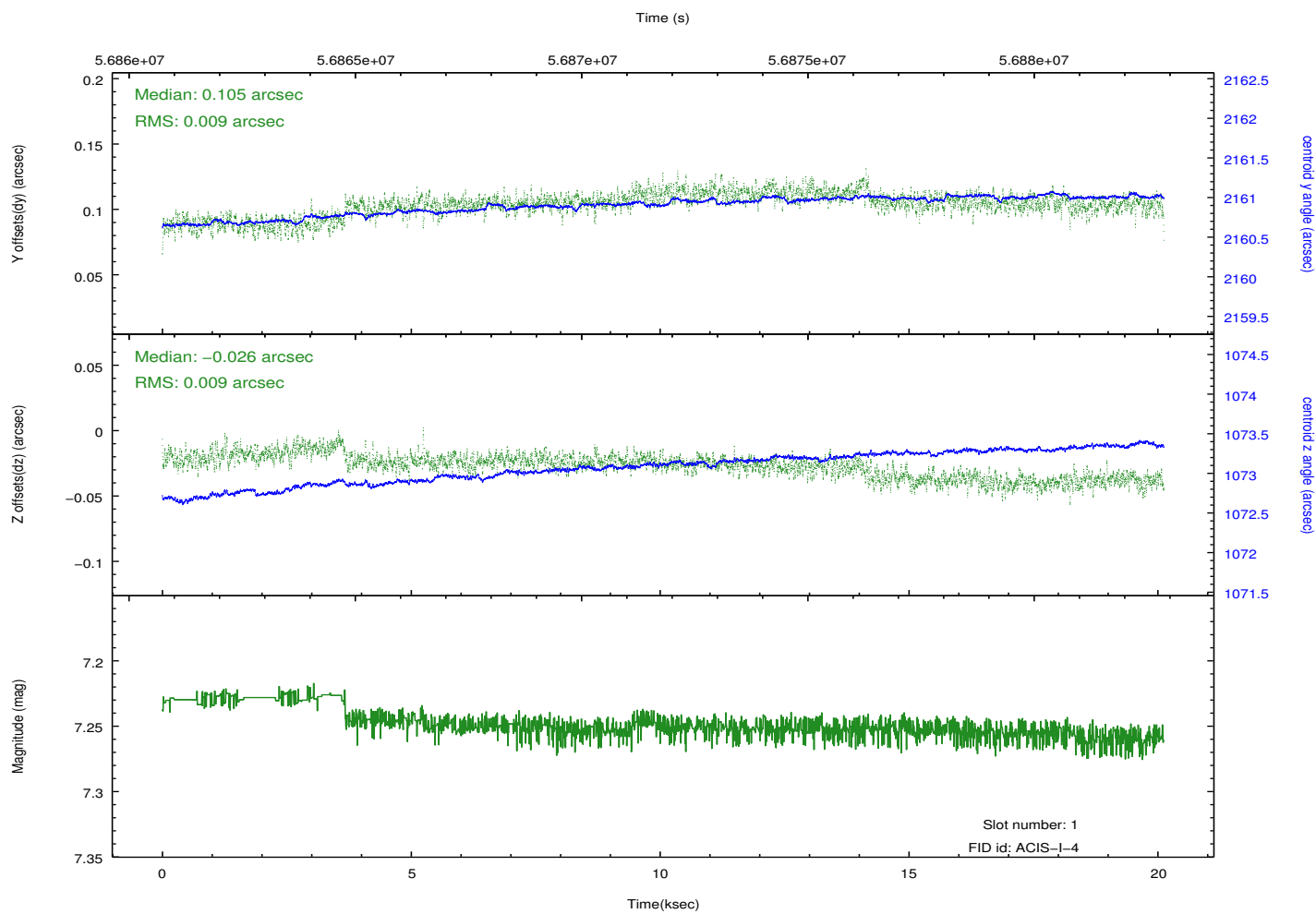
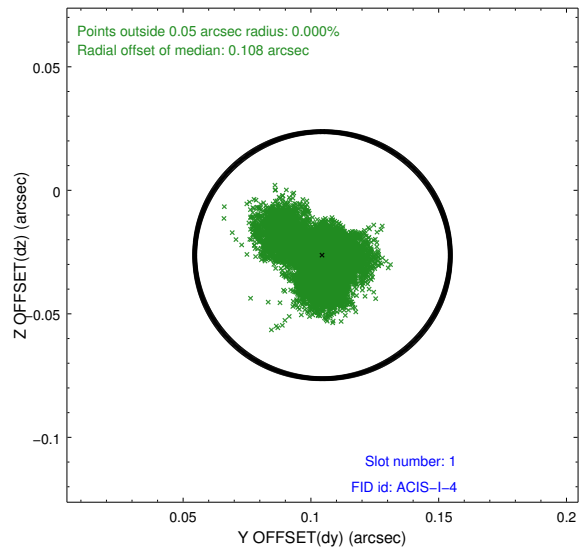
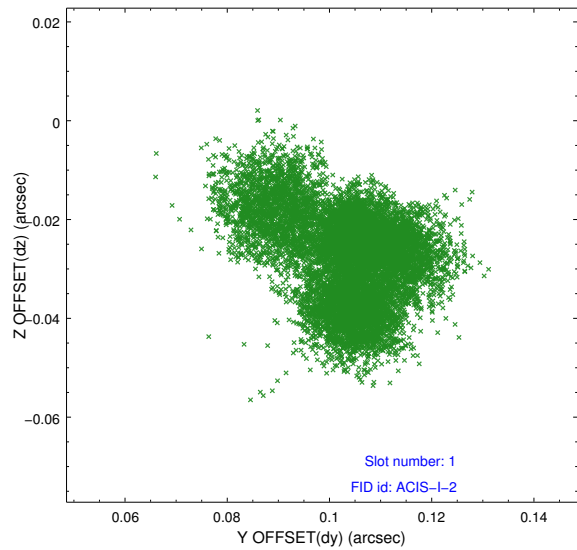


2.5 FID Slots

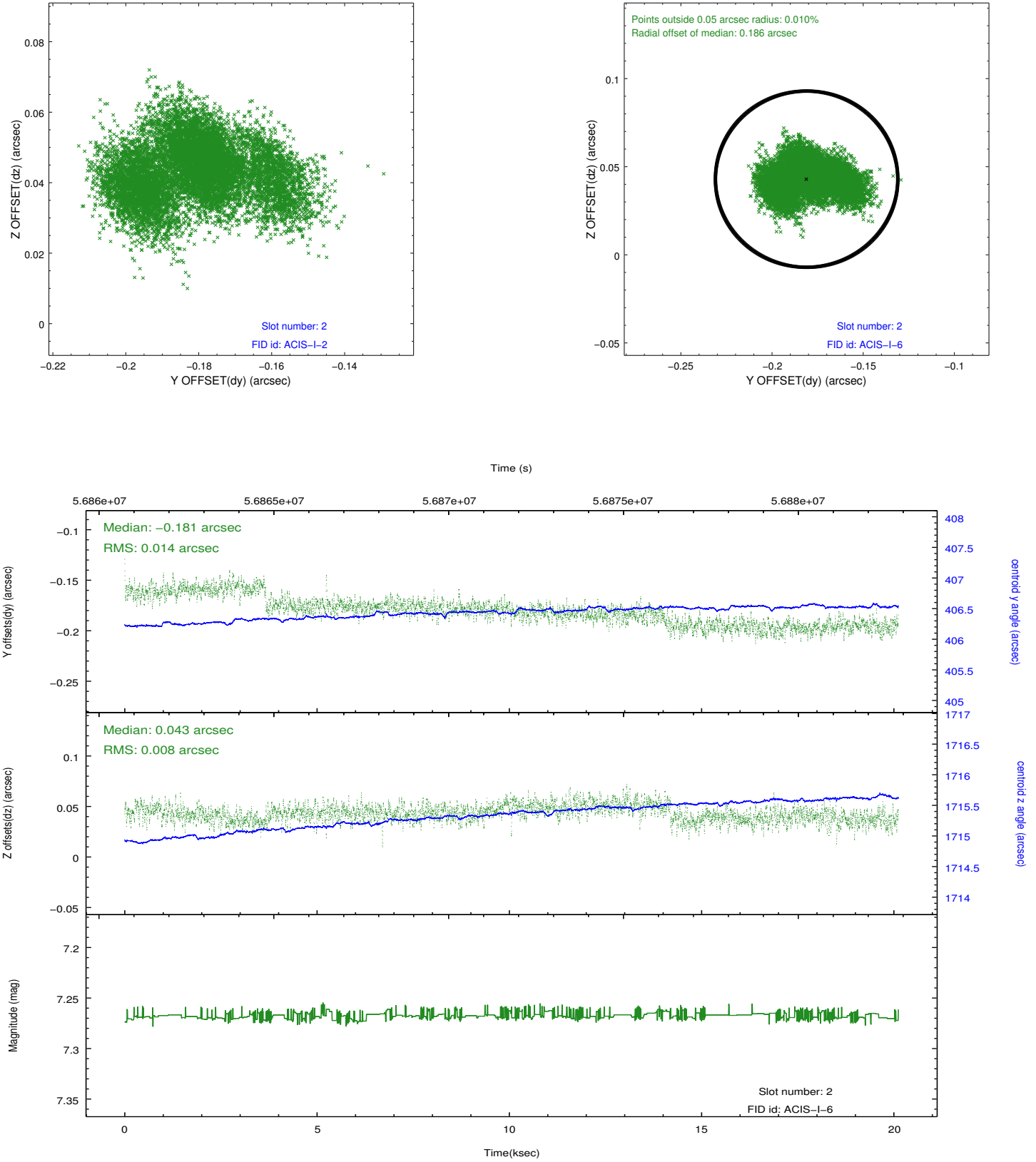
2.5.1 Slot 0



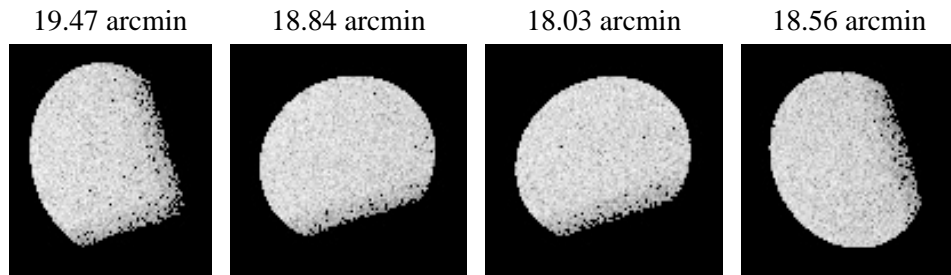
2.5.2 Slot 1



2.5.3 Slot 2



3 Point Sources



A Summary

A.1 Status

V&V Scientist	Joy Nichols
V&V Date (YYYY-MM-DD)	2010.02.12
V&V Edition	1
V&V Disposition and Status	OK
V&V Charge Time	8.086

A.2 Comments

High radiation event near the beginning of this observation. There is some telemetry saturation, which is not included in the GTI.

===

Charge time for this ObsId remains at previous value of 8.086 ksec, 8.069 ksec.

==

The focal plane temperature is approximately -110 C during this observation. This reprocessing of the data applies no CTI correction because none is available for this temperature at present.

The ACIS CTI correction has not been calibrated at this temperature, because it was early in the mission, and ACIS had not yet been lowered to the standard -119.7 C. Both front and back illuminated chips are affected. However a T_GAIN correction has been applied to the BI chips (ACIS-5 and ACIS-7) data included here.

The ACIS spectral response calibration is less accurate at these warmer temperatures than it is at -119.7 C. Users whose science objectives depend on the most accurate spectral response (ie: fitting line-rich spectra) may notice an effect. Users whose science objectives do not depend on the most accurate spectral response should not notice an effect.