

V&V Reference Report

L2 ASCDS Version : 8.4.4

Observation 57902 - L2 Version 3
Chandra X-Ray Center

L2 Processing Date : May 11 2012

Contents

1	Front	2
2	OBI	3
2.1	OBI	3
2.1.1	Images	3
2.1.2	Bias	3
2.1.3	Parameters	4
2.1.4	Events	4
2.2	Compared Parameters	5
2.3	Star Slots	6
2.4	FID Slots	6
A	Summary	7
A.1	Status	7
A.2	Comments	7

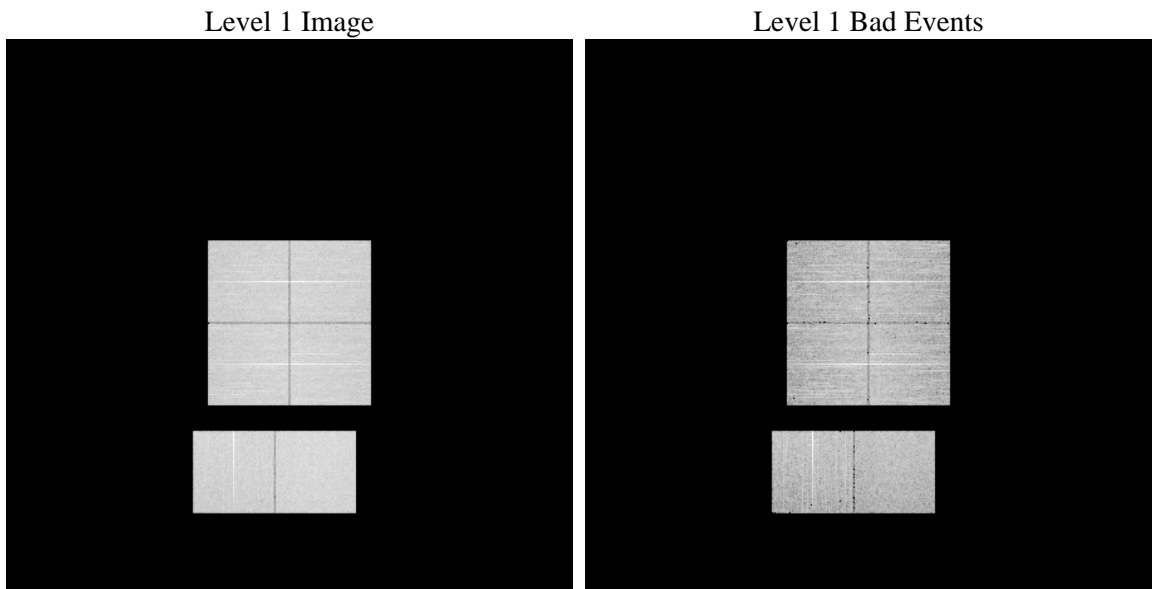
1 Front

seq_num	 	Sequence number
obs_id	57902	Observation id
title	ACIS-012367 diagnostics	Proposal title
observer	CHANDRA engineering request/realtime commanding	Principal investig
object	 	Source name
dtycle	0	
cycle	P	events from which exps? Prim/Second/Both
ra_targ	0.0	Observer's specified target RA [deg]
dec_targ	0.0	Observer's specified target Dec [deg]
ra_nom	207.49040064765	Nominal RA [deg]
dec_nom	-7.5728749282691	Nominal Dec [deg]
roll_nom	76.406677890262	Nominal Roll [deg]
revision	3	Processing version of data
ontime	7251.1999730468	Sum of GTIs [s]
livetime	7159.3809128396	Livetime [s]
ontime0	7251.1999730468	Sum of GTIs [s]
ontime1	7251.1999730468	Sum of GTIs [s]
ontime2	7251.1999730468	Sum of GTIs [s]
ontime3	7251.1999730468	Sum of GTIs [s]
ontime6	7251.1999730468	Sum of GTIs [s]
ontime7	7251.1999730468	Sum of GTIs [s]
l2events	541711	Number of level 2 events

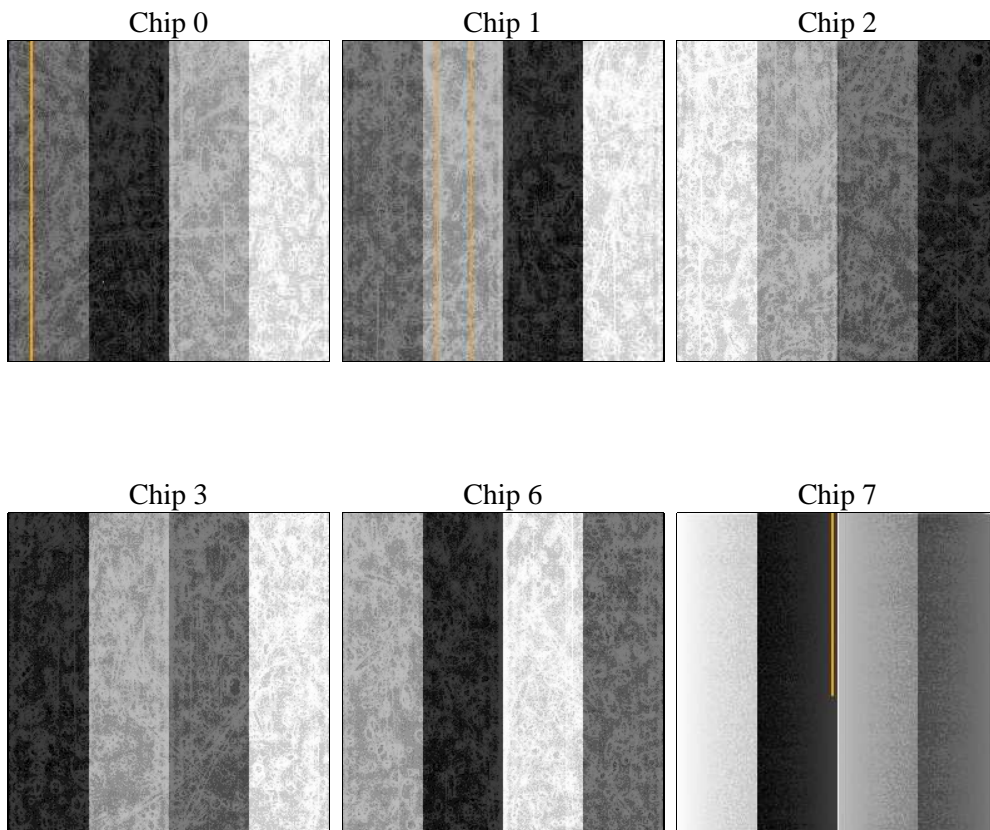
2 OBI

2.1 OBI

2.1.1 Images



2.1.2 Bias



2.1.3 Parameters

obi_num	0	Obi number	sched_exp_time	5940	[s] Scheduled observation exposure time
ascdsver	8.4.4	Processing system revision	ontime	7251.1999730468	Sum of GTIs [s]
caldbver	4.4.9	 	ontime0	7251.1999730468	Sum of GTIs [s]
date	2012-05-12T01:20:45	Date and time of file creation	ontime1	7251.1999730468	Sum of GTIs [s]
revision	3	Processing version of data	ontime2	7251.1999730468	Sum of GTIs [s]
			ontime3	7251.1999730468	Sum of GTIs [s]
			ontime6	7251.1999730468	Sum of GTIs [s]
			ontime7	7251.1999730468	Sum of GTIs [s]
			l1events	957707	Number of level 1 events

2.1.4 Events

	ccd 0	ccd 1	ccd 2	ccd 3	ccd 6	ccd 7		ccd 0	ccd 1	ccd 2	ccd 3	ccd 6	ccd 7
level 1 events	150392	153511	156490	158580	158571	180163	grade 0 events	48601	48394	50271	49991	49537	25181
rejected events	61472	63575	67028	68754	66112	59166		32%	31%	32%	31%	31%	13%
rejected %	40%	41%	42%	43%	41%	32%	grade 1 events	341	278	380	378	323	150
								0%	0%	0%	0%	0%	0%
							grade 2 events	16075	16597	15453	15739	16649	26762
								10%	10%	9%	9%	10%	14%
							grade 3 events	6034	6064	6078	6187	5958	11801
								4%	3%	3%	3%	3%	6%
							grade 4 events	5959	6046	5988	6266	6095	11559
								3%	3%	3%	3%	3%	6%
							grade 5 events	3431	3581	3236	3864	3770	9599
								2%	2%	2%	2%	2%	5%
							grade 6 events	13488	14050	12934	12962	15569	47384
								8%	9%	8%	8%	9%	26%
							grade 7 events	56463	58501	62150	63193	60670	47727
								37%	38%	39%	39%	38%	26%

2.2 Compared Parameters

Parameter	Planned	Actual	Parameter	Planned	Actual
Instrument	ACIS	ACIS	Obspar format version number	7	7
Detector	ACIS-012367	ACIS-012367	Obspar file type	PREDICTED	ACTUAL
Grating	NONE	NONE	Obspar update status	OVERRIDE	OVERRIDE
Data mode	FAINT	FAINT	Number of optional ACIS chips dropped	0	0
Observation mode	SECONDARY	SECONDARY	On-chip summing requested	N	N
[deg] Pointing RA	207.4904007454986	207.4904006476547	Subarray requested	NONE	NONE
[deg] Pointing Dec	-7.572874576801089	-7.572874928269083	Alternating exposures requested	N	N
[deg] Pointing Roll	76.40667792913214	76.40667789026162	[s] Primary exposure time	3.2	3.2
[mm] SIM focus pos	-0.68282252473119	-0.68282252473119			
[mm] SIM defocus	0.8505140384245534	0.8505140384245534			
[mm] SIM translation stage pos	250.4660330802	250.4660330802			
[mm] SIM translation stage offset	-0.01005726120527584	-0.01005726120527584			
[s] Observation start time (MET)	322583125.607537	322583125.607537			
Observation start date	2008-03-22T14:53:00	2008-03-22T14:25:25			
[s] Observation end time (MET)	322592204.720169	322592204.720169			
Observation end date	2008-03-22T16:32:00	2008-03-22T16:56:44			
Read mode	TIMED	TIMED			

2.3 Star Slots

2.4 FID Slots

A Summary

A.1 Status

V&V Scientist	Jen Lauer
V&V Date (YYYY-MM-DD)	2012.05.14
V&V Edition	1
V&V Disposition and Status	OK
V&V Charge Time	7.2511999730468

A.2 Comments