

V&V Reference Report

L2 ASCDS Version : 8.5.1

Observation 5792 - L2 Version 3
Chandra X-Ray Center

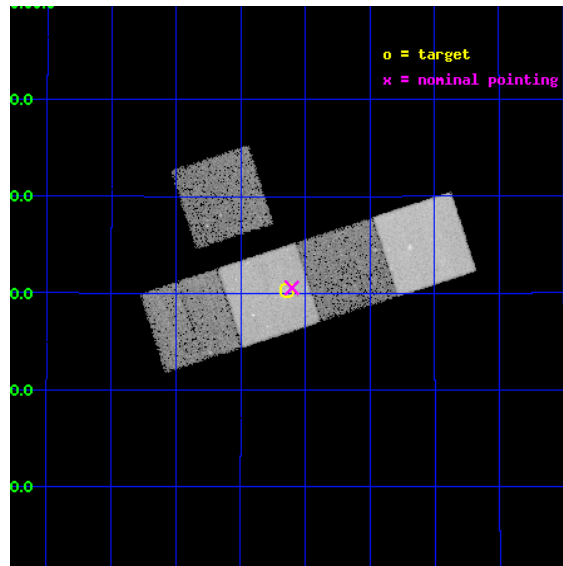
L2 Processing Date : Dec 17 2012

Contents

1	Front	2
2	OBI	3
2.1	OBI	3
2.1.1	Images	3
2.1.2	Bias	3
2.1.3	Parameters	4
2.1.4	Events	4
2.2	Compared Parameters	5
2.3	Aspect	6
2.4	Star Slots	9
2.4.1	Slot 3	9
2.4.2	Slot 4	10
2.4.3	Slot 5	11
2.4.4	Slot 6	12
2.4.5	Slot 7	13
2.5	FID Slots	14
2.5.1	Slot 0	14
2.5.2	Slot 1	15
2.5.3	Slot 2	16
A	Summary	17
A.1	Status	17
A.2	Comments	17

1 Front

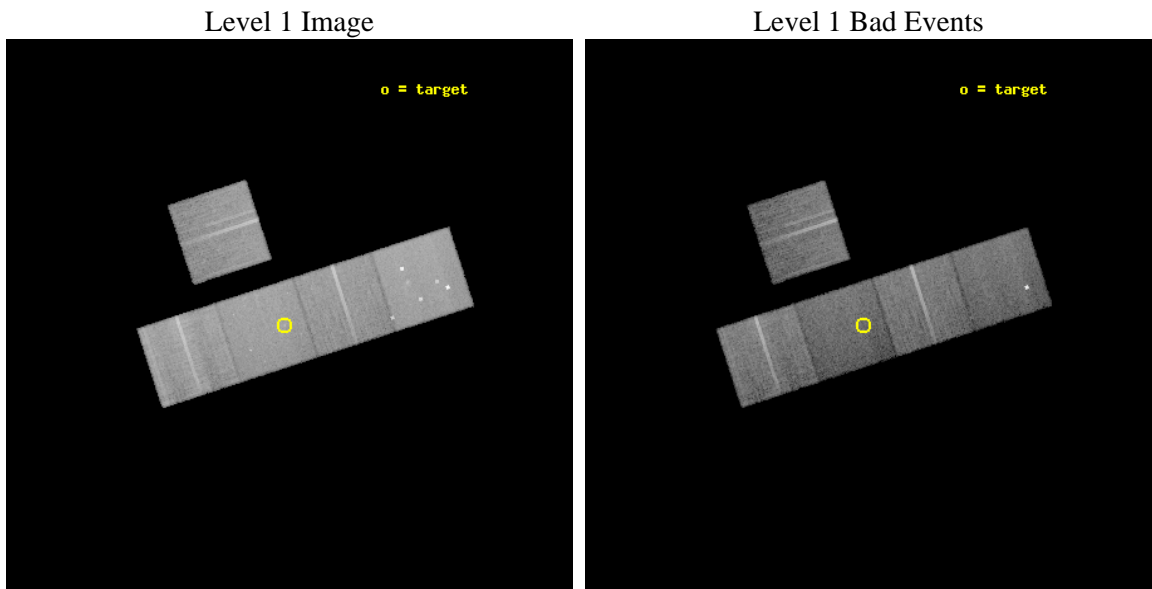
seq_num	800505	Sequence number
obs_id	5792	Observation id
title	Dark Matter in Isolated Ellipticals and Groups	Proposal title
observer	Professor Gordon Garmire	Principal investigator
object	NGC3209	Source name
dtcycle	0	
cycle	P	events from which exps? Prim/Second/Both
ra_targ	155.160417	Observer's specified target RA [deg]
dec_targ	25.504833	Observer's specified target Dec [deg]
ra_nom	155.15094569464	Nominal RA [deg]
dec_nom	25.509379150613	Nominal Dec [deg]
roll_nom	162.00928772025	Nominal Roll [deg]
revision	3	Processing version of data
ontime	21994.499957681	Sum of GTIs [s]
liveltime	21707.125623618	Livetime [s]
ontime3	21991.358967453	Sum of GTIs [s]
ontime5	21994.499957681	Sum of GTIs [s]
ontime6	21994.499957681	Sum of GTIs [s]
ontime7	21994.499957681	Sum of GTIs [s]
ontime8	21991.358977437	Sum of GTIs [s]
l2events	189067	Number of level 2 events



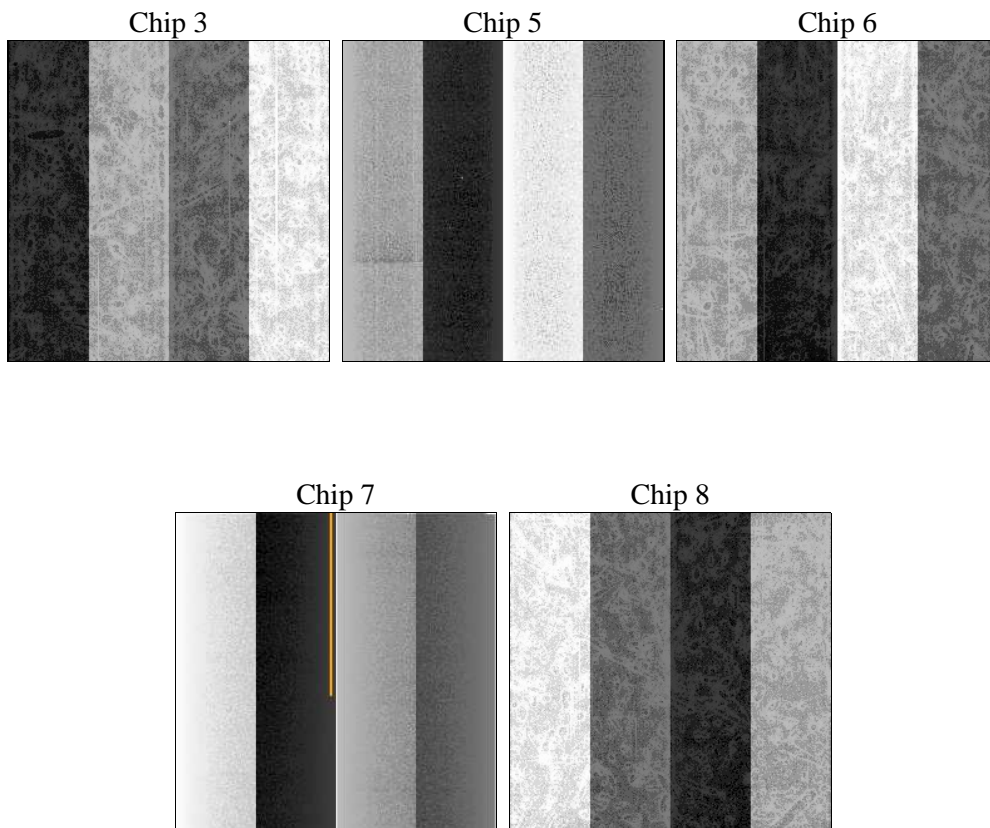
2 OBI

2.1 OBI

2.1.1 Images



2.1.2 Bias



2.1.3 Parameters

obi_num	1	Obi number	sched_exp_time	21849.328000	[s] Scheduled observation exposure time
ascdsver	8.5.1	Processing system revision	ontime	21994.499957681	Sum of GTIs [s]
caldbver	4.5.5	 	ontime3	21991.358967453	Sum of GTIs [s]
date	2012-12-17T17:13:18	Date and time of file creation	ontime5	21994.499957681	Sum of GTIs [s]
revision	3	Processing version of data	ontime6	21994.499957681	Sum of GTIs [s]
			ontime7	21994.499957681	Sum of GTIs [s]
			ontime8	21991.358977437	Sum of GTIs [s]
			l1events	803614	Number of level 1 events

2.1.4 Events

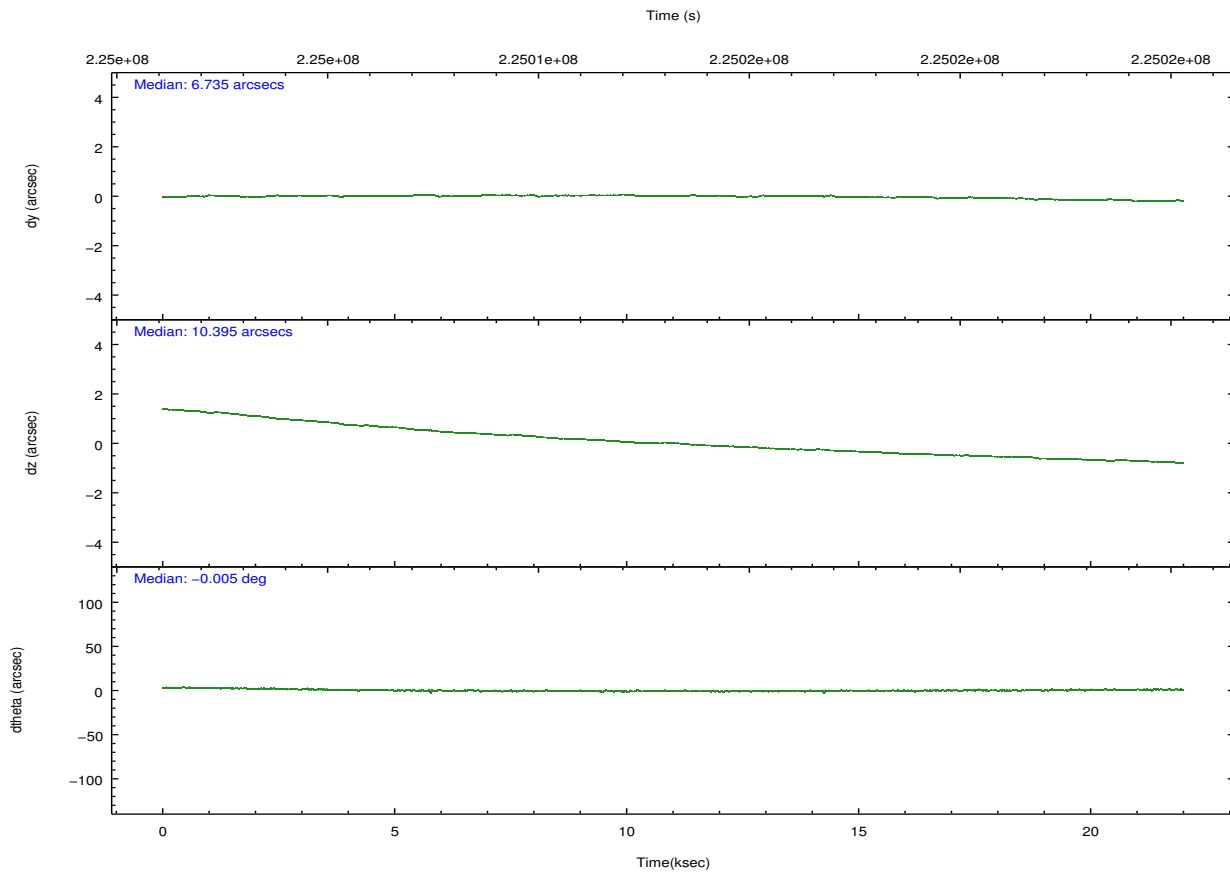
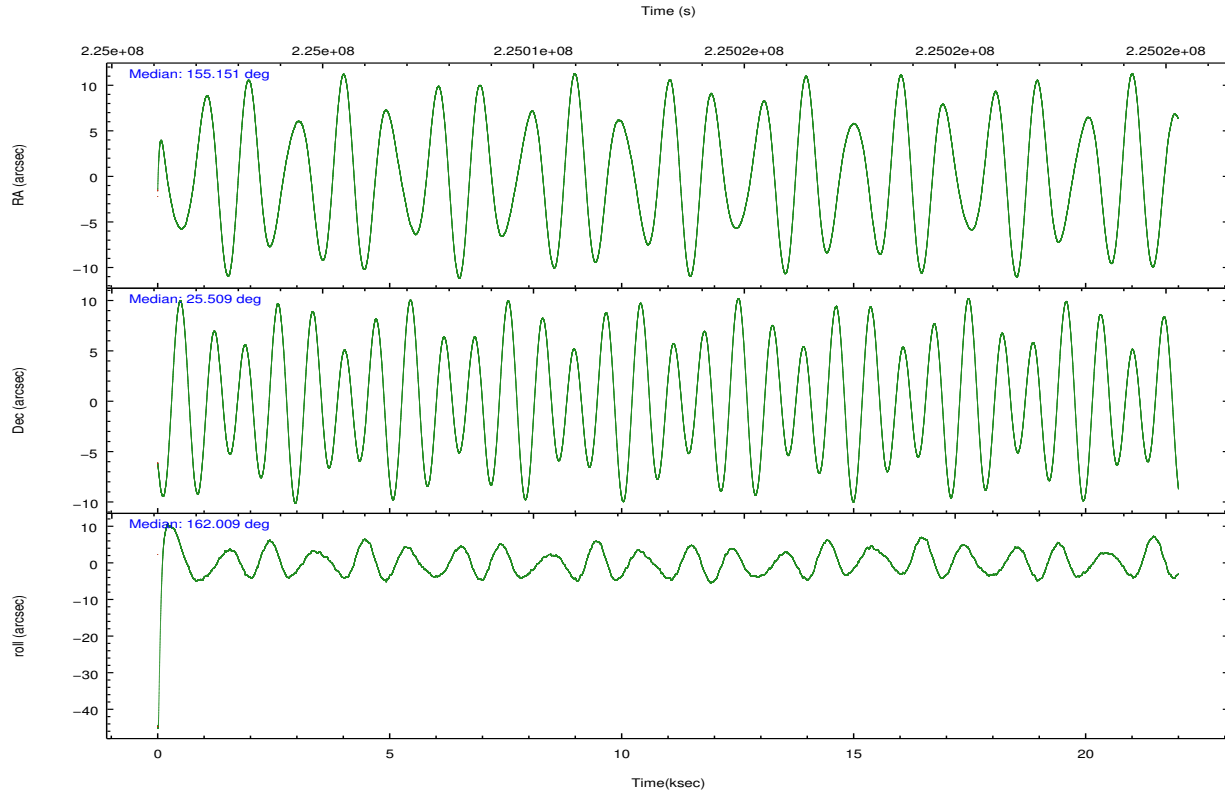
	ccd 3	ccd 5	ccd 6	ccd 7	ccd 8
level 1 events	134221	200800	139623	156332	172638
rejected events	121803	102469	126015	87024	133418
rejected %	90%	51%	90%	55%	77%

	ccd 3	ccd 5	ccd 6	ccd 7	ccd 8
grade 0 events	4454	16138	4773	6630	12415
	3%	8%	3%	4%	7%
grade 1 events	66	225	57	138	117
	0%	0%	0%	0%	0%
grade 2 events	2761	28268	3053	14368	8853
	2%	14%	2%	9%	5%
grade 3 events	1517	4496	1576	6858	4391
	1%	2%	1%	4%	2%
grade 4 events	1449	4091	1511	6742	4097
	1%	2%	1%	4%	2%
grade 5 events	5349	16079	5565	16511	7967
	3%	8%	3%	10%	4%
grade 6 events	2577	48075	3084	36595	10492
	1%	23%	2%	23%	6%
grade 7 events	116048	83428	120004	68490	124306
	86%	41%	85%	43%	72%

2.2 Compared Parameters

Parameter	Planned	Actual	Parameter	Planned	Actual
Instrument	ACIS	ACIS	Obspar format version number	7	7
Detector	ACIS-35678	ACIS-35678	Obspar file type	PREDICTED	ACTUAL
Grating	NONE	NONE	Obspar update status	NONE	UPDATED
Data mode	VFAINT	VFAINT	Number of optional ACIS chips dropped	0	0
Observation mode	POINTING	POINTING	On-chip summing requested	N	N
[deg] Pointing RA	155.180386	155.1509456946437	Subarray requested	NONE	NONE
[deg] Pointing Dec	25.515413	25.5093791506129	Alternating exposures requested	N	N
[deg] Pointing Roll	161.840016	162.0092877202523	[s] Primary exposure time	0.000000	3.1
[mm] SIM focus pos	-0.684267	-0.6828225247311905			
[mm] SIM defocus	0	0.001444936568705701			
[mm] SIM translation stage pos	-190.132523	-190.1425803651734			
[mm] SIM translation stage offset	0	0.01005778216563158			
[s] Observation start time (MET)	225002344.184000	225001050.00858			
Observation start date	2005-02-17T04:38:00	2005-02-17T04:17:30			
[s] Observation end time (MET)	225024193.184000	225024417.44713			
Observation end date	2005-02-17T10:42:09	2005-02-17T10:46:57			
Read mode	TIMED	TIMED			

2.3 Aspect

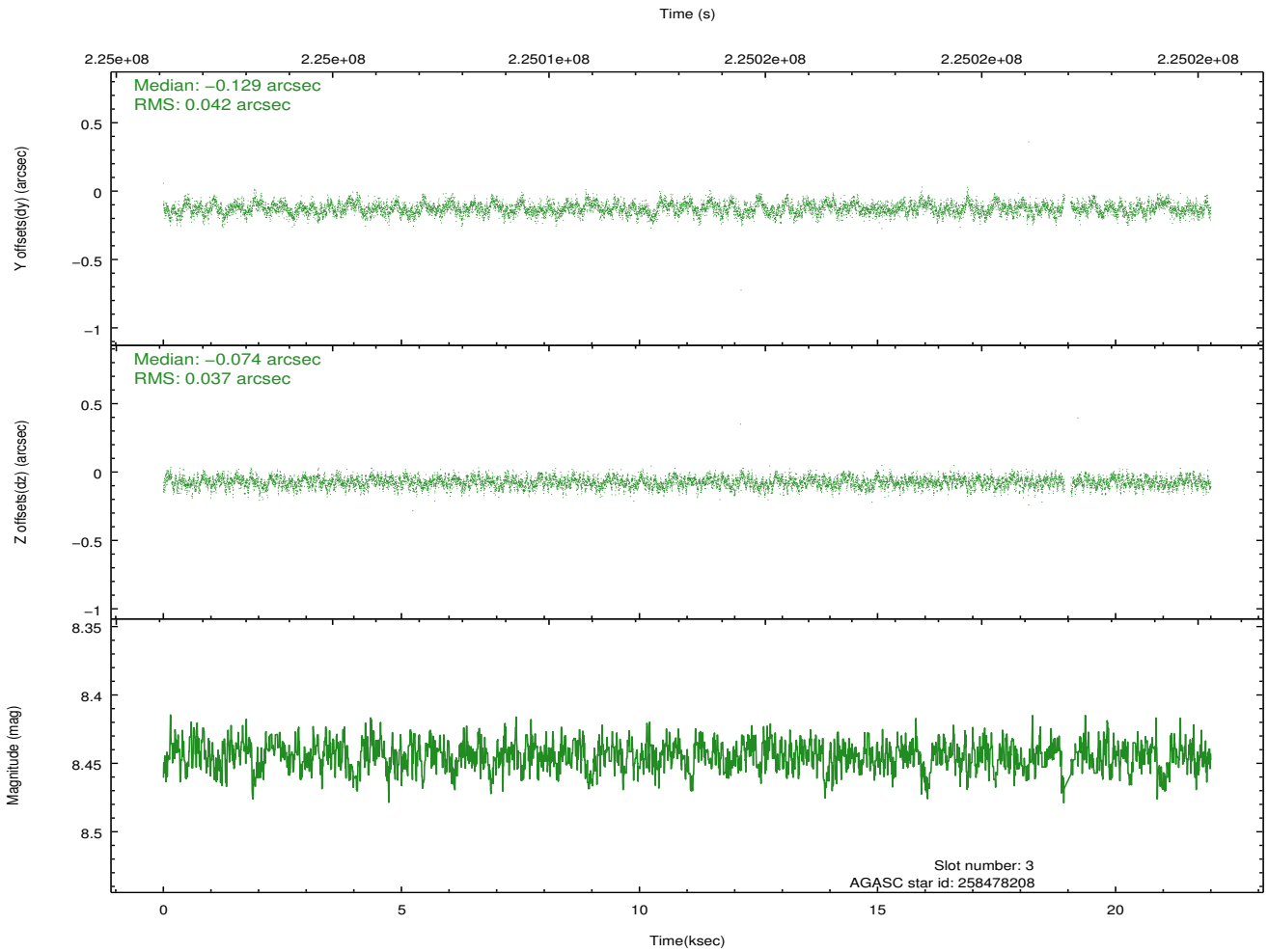
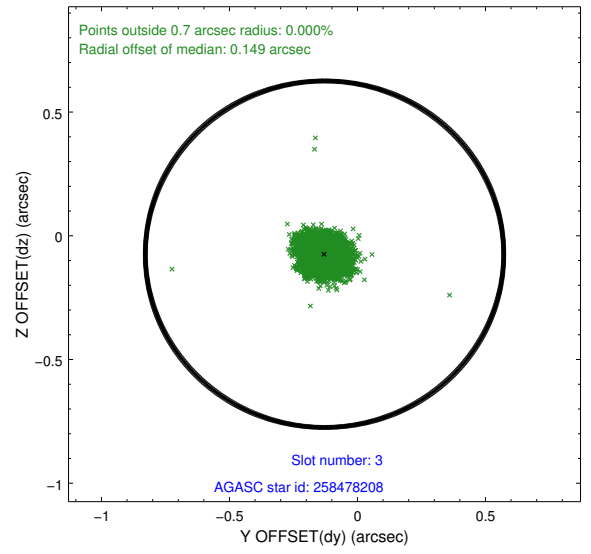
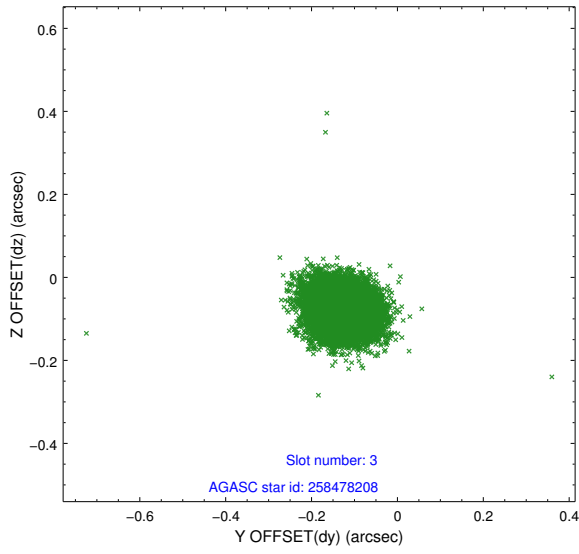


Slot Statistics

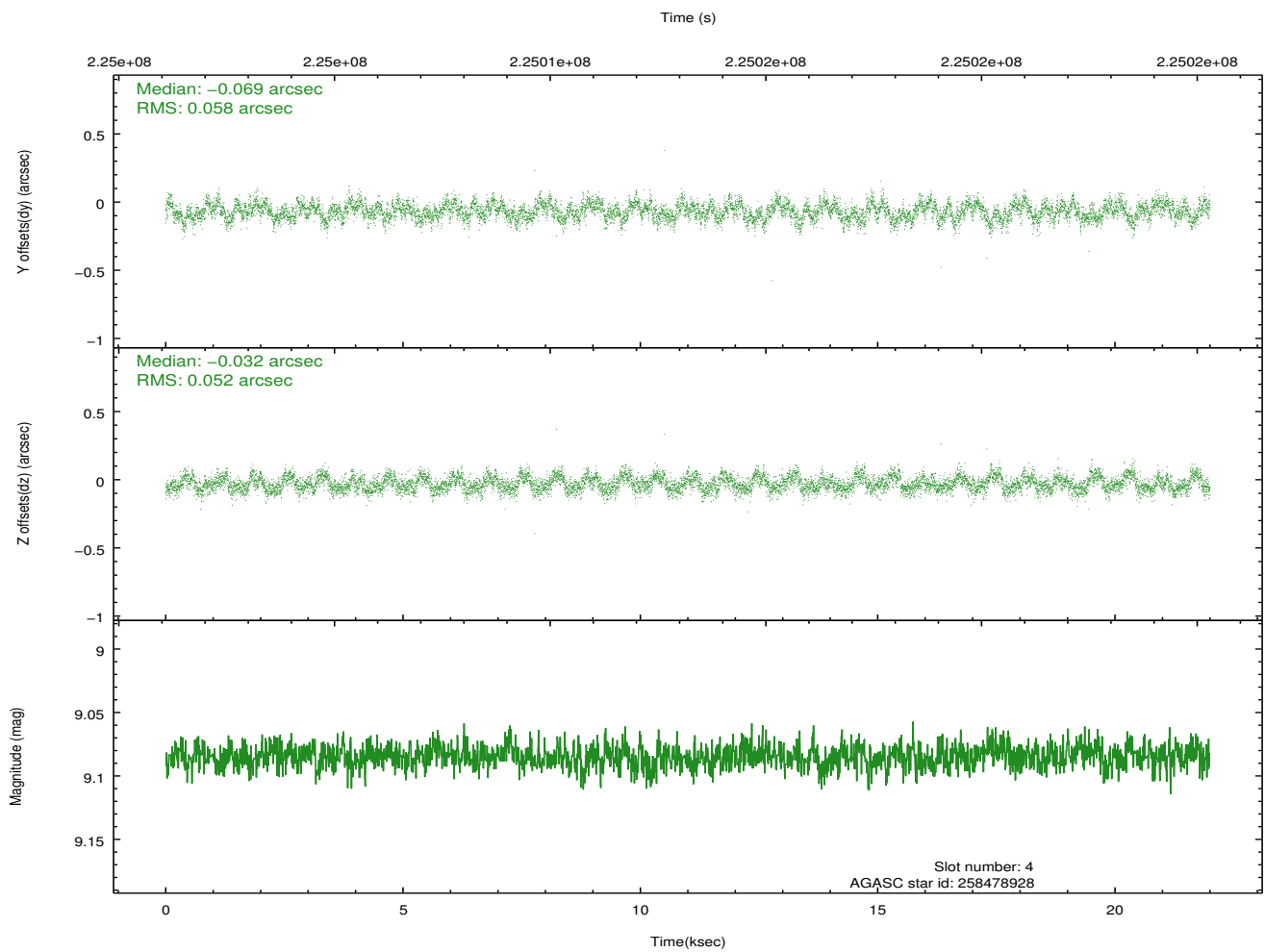
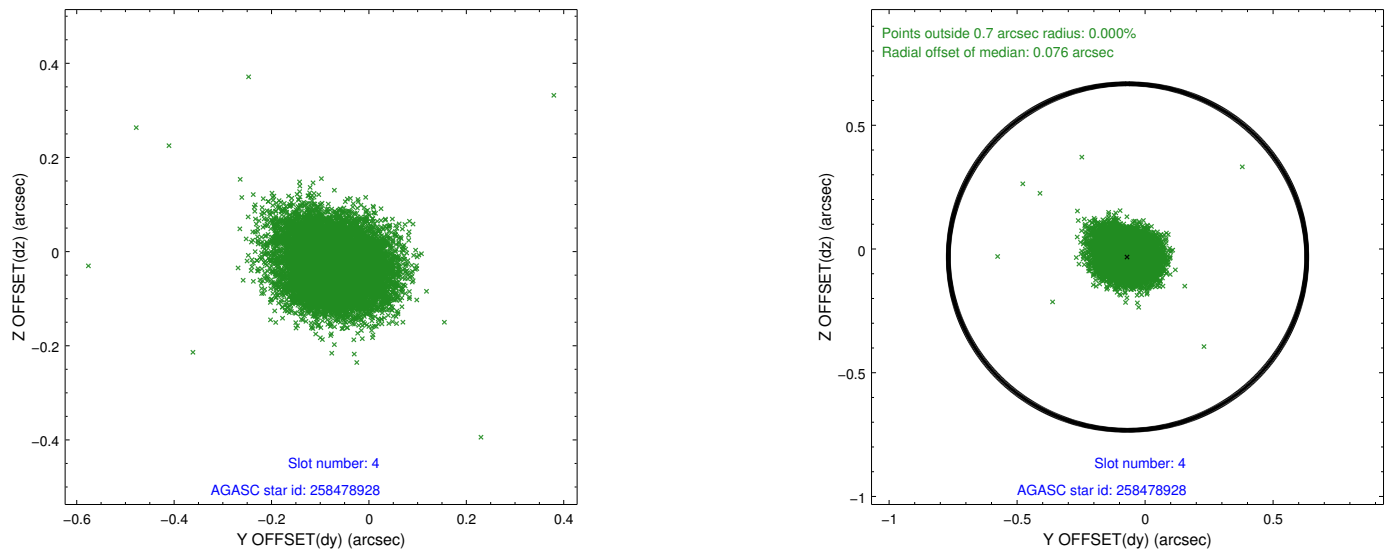
slot	status	id	mag	n_pts	med_dy	med_dz	dr1	dr2	ra	dec	mean_y	mean_z
0	FID	ACIS-S-2	7.10	5366	-0.056	-0.021	0.011	0.020	0.000000	0.000000	-759.48	-1731.73
1	FID	ACIS-S-4	7.21	5367	0.078	0.033	0.010	0.021	0.000000	0.000000	2153.83	176.69
2	FID	ACIS-S-5	7.23	5365	-0.053	-0.002	0.009	0.015	0.000000	0.000000	-1812.15	170.45
3	GUIDE	258478208	8.44	10664	-0.129	-0.074	0.060	0.096	155.656432	25.212449	-1812.74	550.79
4	GUIDE	258478928	9.08	10723	-0.069	-0.032	0.082	0.132	155.617264	25.106868	-1811.04	951.99
5	GUIDE	258479136	8.35	10733	-0.015	-0.001	0.063	0.098	155.125492	25.678252	351.71	-501.29
6	GUIDE	258086400	9.08	10732	-0.027	0.018	0.092	0.148	155.666282	24.778398	-2334.87	2023.88
7	GUIDE	258483976	9.10	10725	0.243	0.089	0.128	0.195	154.281613	25.129764	2353.83	2223.37

2.4 Star Slots

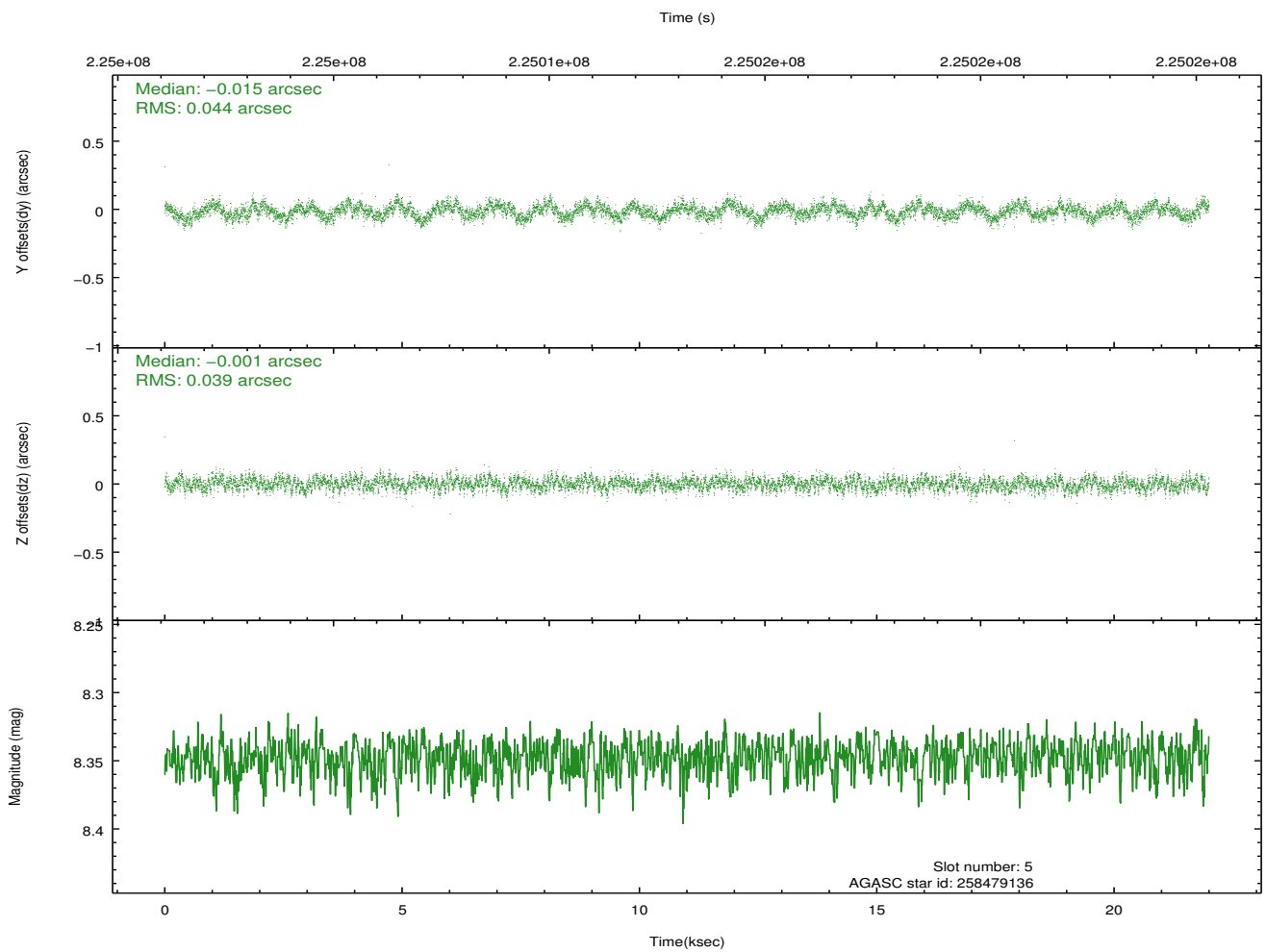
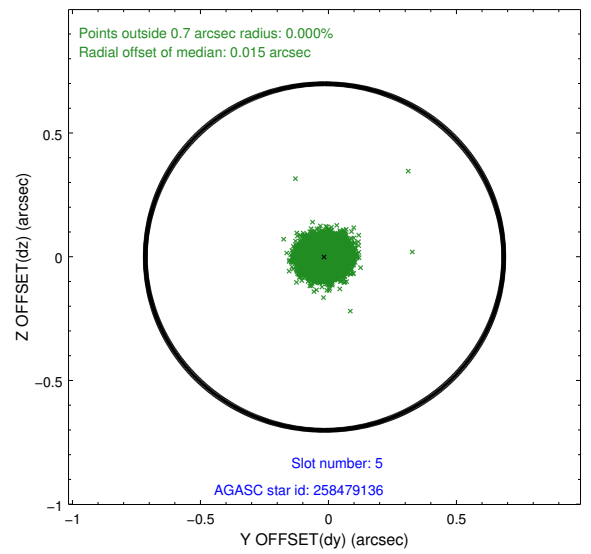
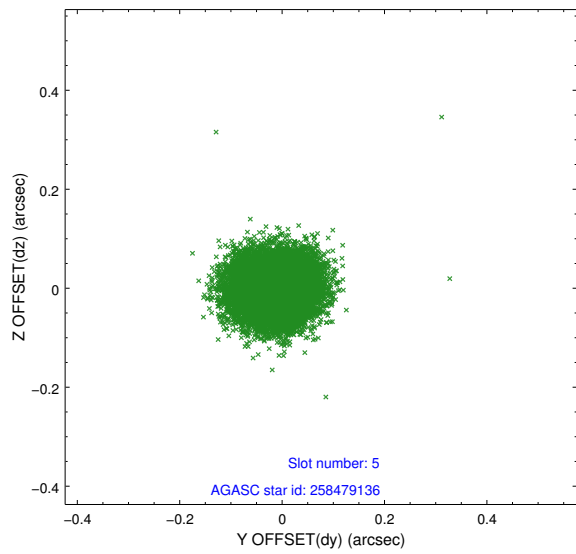
2.4.1 Slot 3



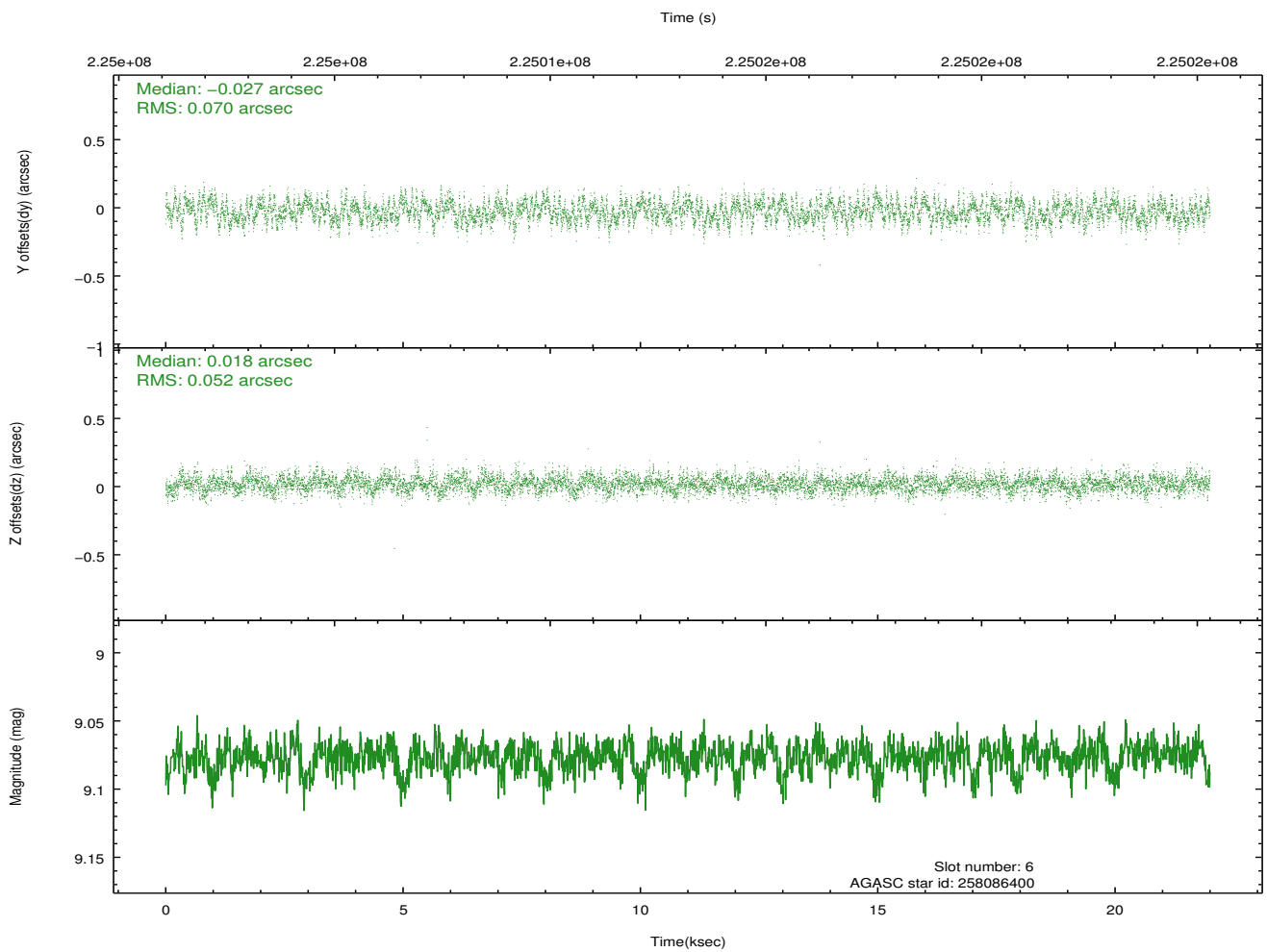
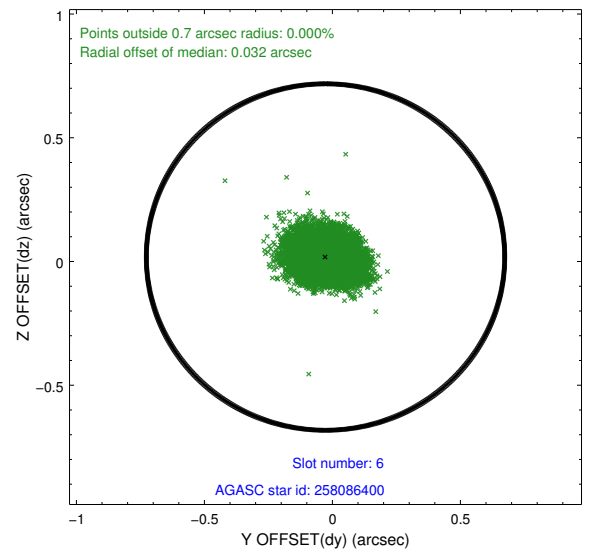
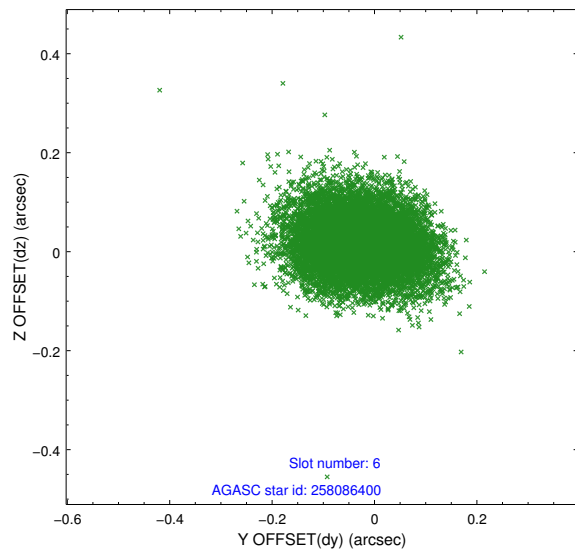
2.4.2 Slot 4



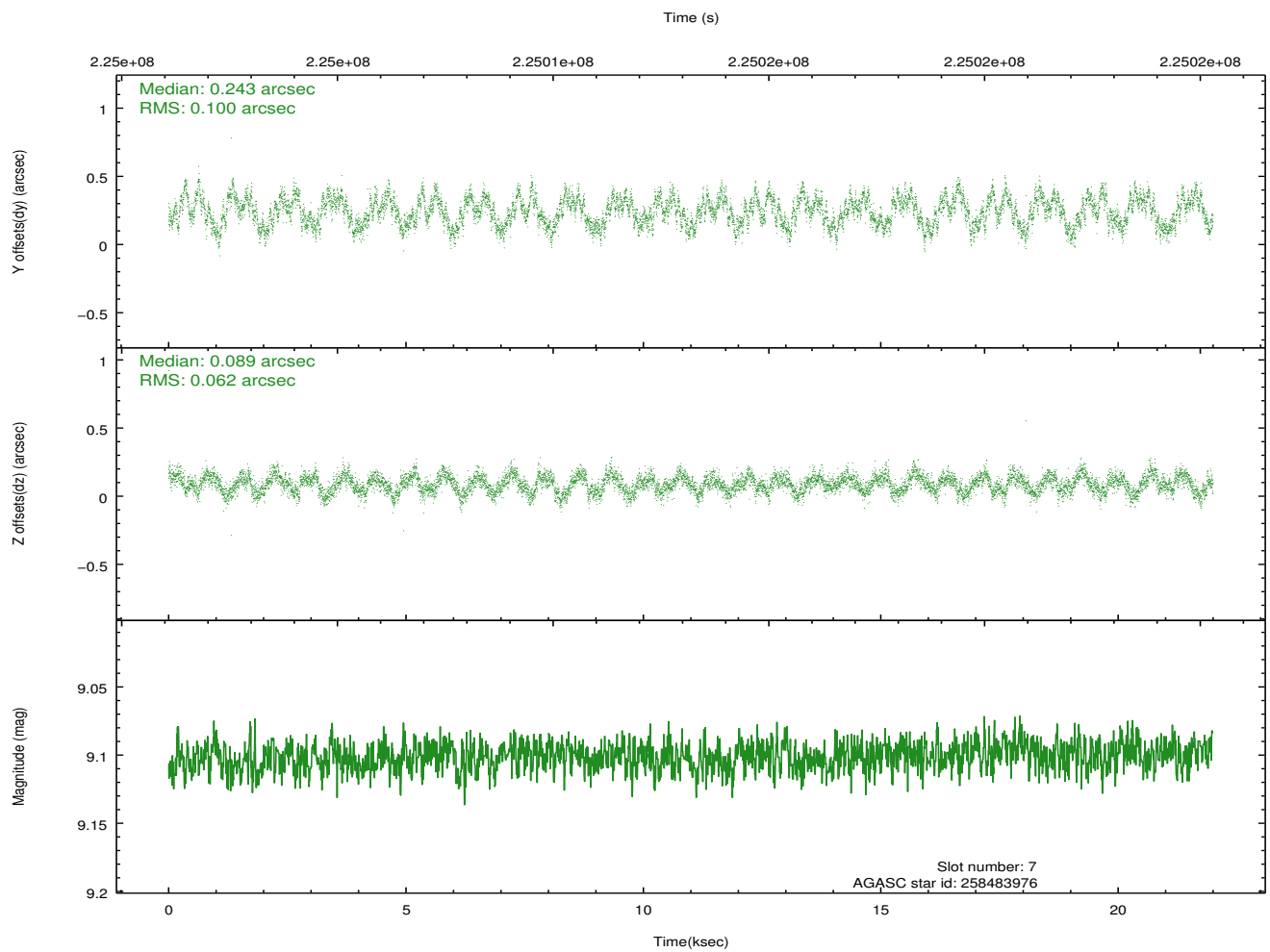
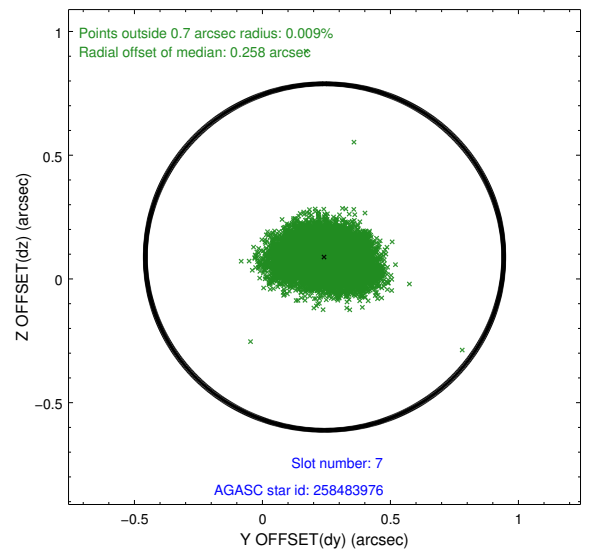
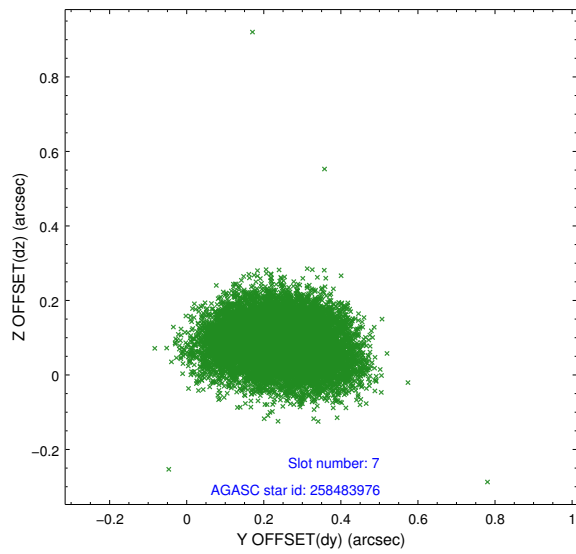
2.4.3 Slot 5



2.4.4 Slot 6

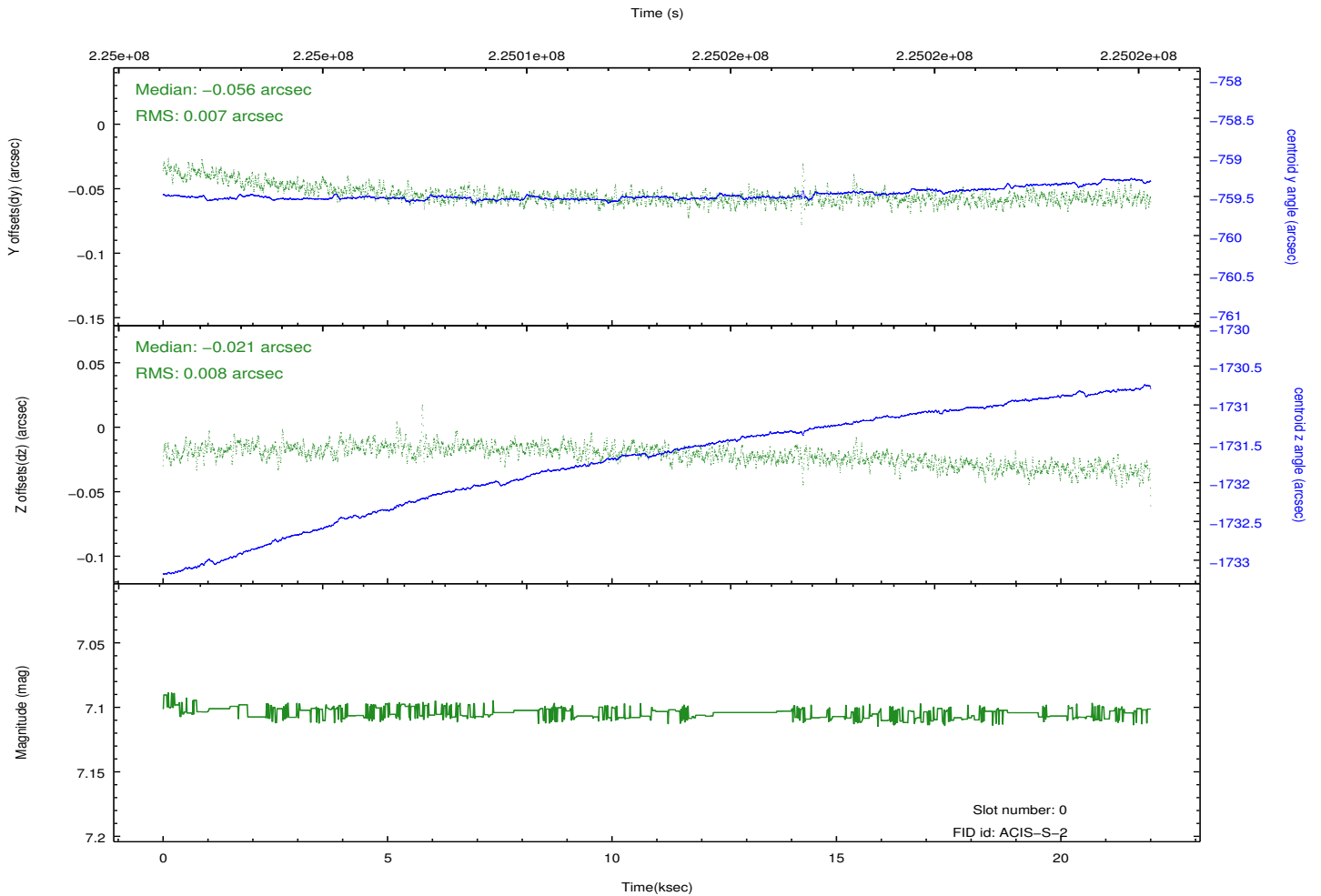
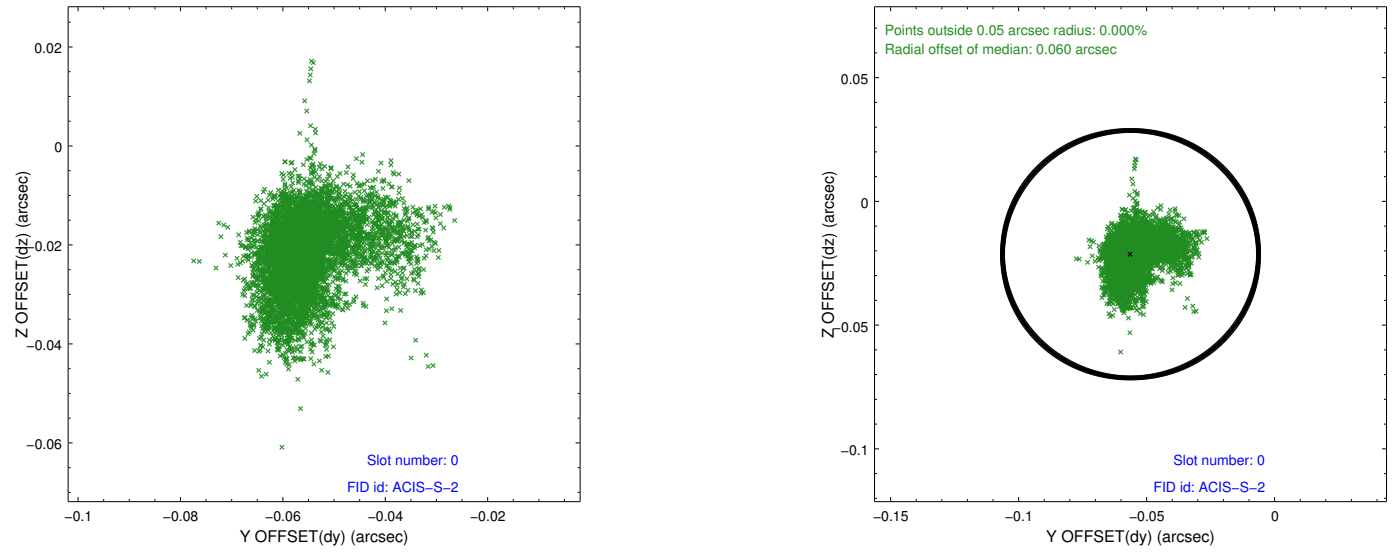


2.4.5 Slot 7

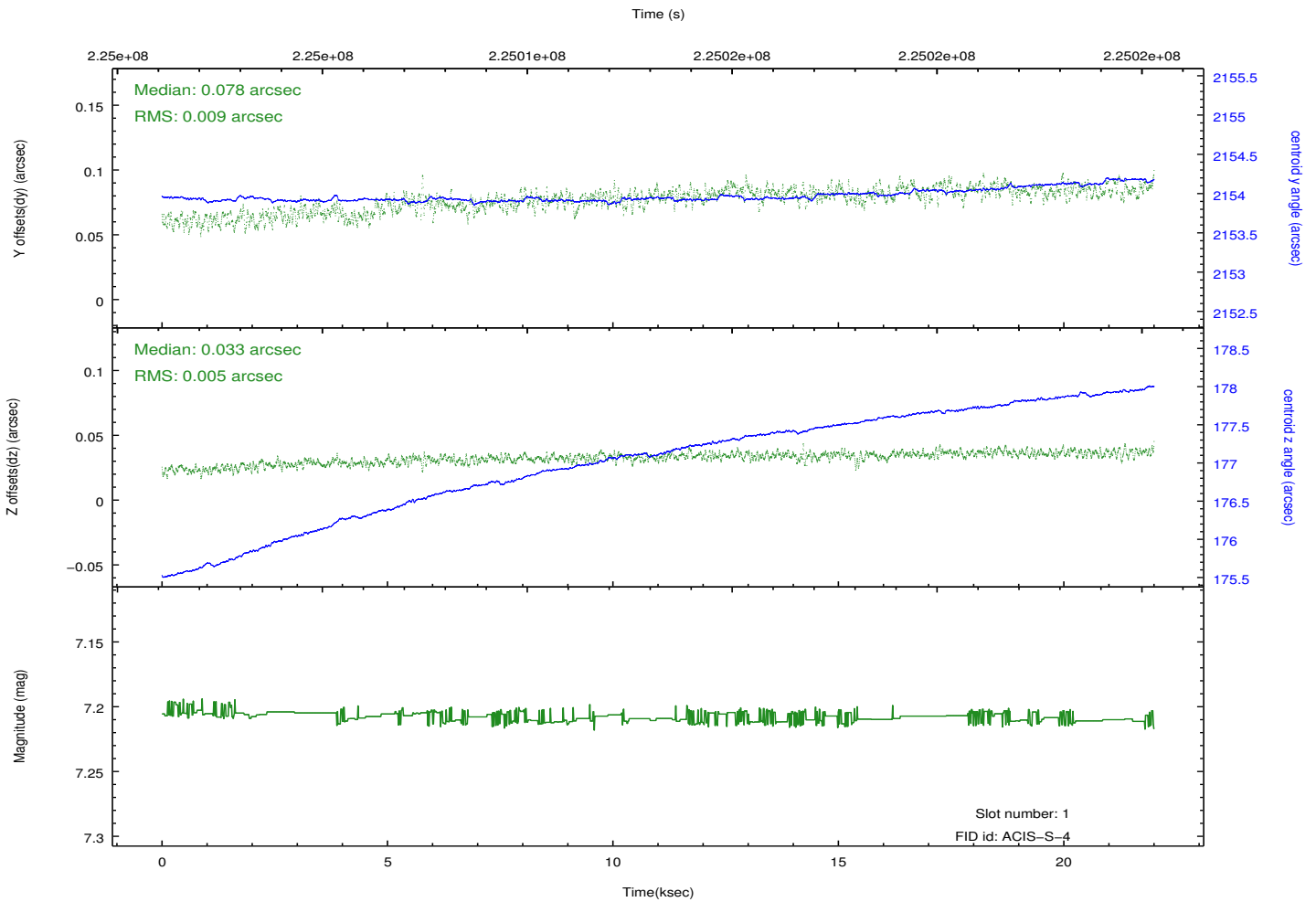
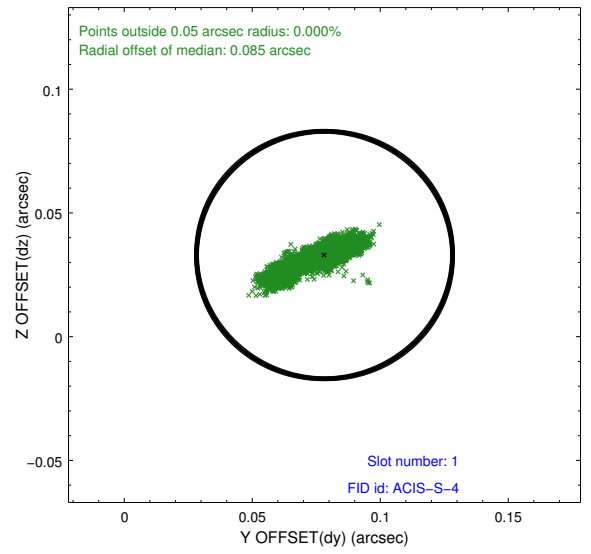
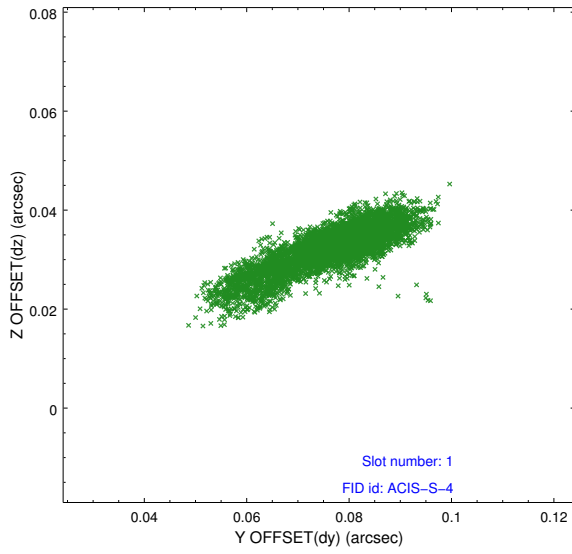


2.5 FID Slots

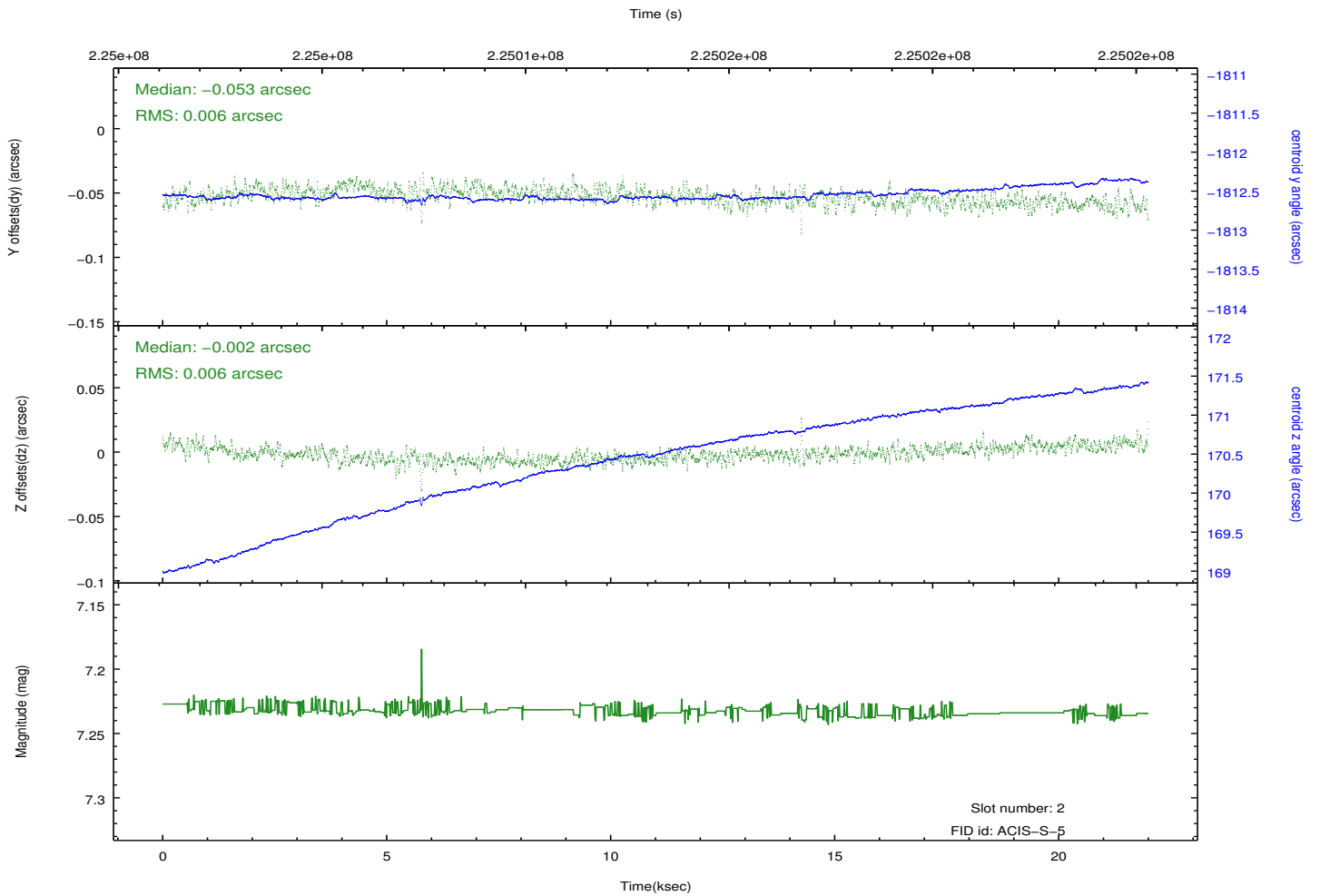
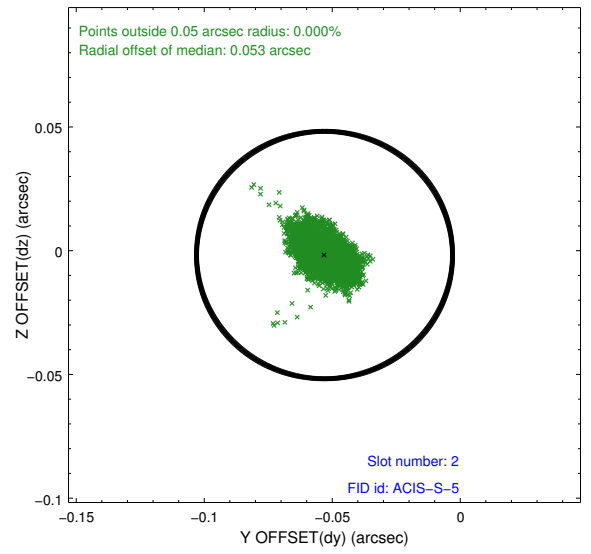
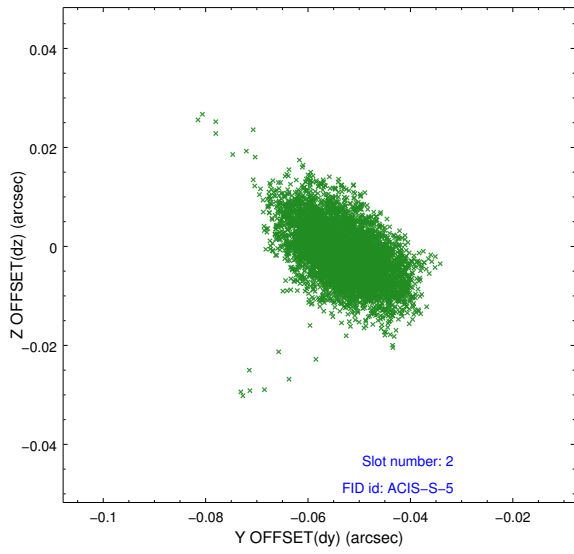
2.5.1 Slot 0



2.5.2 Slot 1



2.5.3 Slot 2



A Summary

A.1 Status

V&V Scientist	Jen Lauer
V&V Date (YYYY-MM-DD)	2013.01.10
V&V Edition	1
V&V Disposition and Status	OK
V&V Charge Time	21.99449

A.2 Comments