

V&V Reference Report

L2 ASCDS Version : 8.5.1

Observation 5802 - L2 Version 3
Chandra X-Ray Center

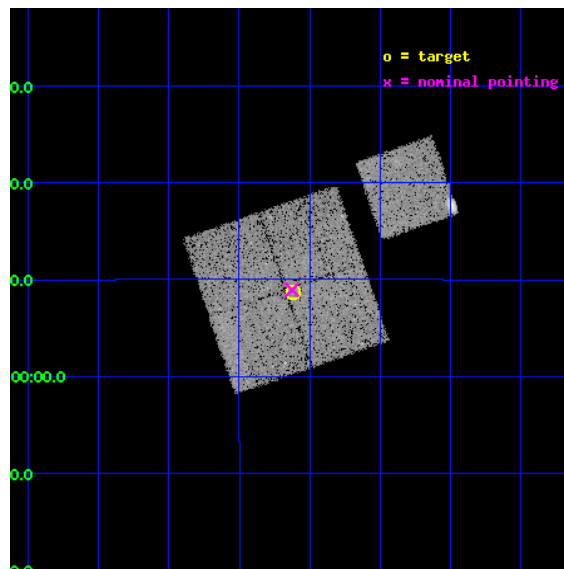
L2 Processing Date : Dec 18 2012

Contents

1	Front	2
2	OBI	3
2.1	OBI	3
2.1.1	Images	3
2.1.2	Bias	3
2.1.3	Parameters	4
2.1.4	Events	4
2.2	Compared Parameters	5
2.3	Aspect	6
2.4	Star Slots	9
2.4.1	Slot 3	9
2.4.2	Slot 4	10
2.4.3	Slot 5	11
2.4.4	Slot 6	12
2.4.5	Slot 7	13
2.5	FID Slots	14
2.5.1	Slot 0	14
2.5.2	Slot 1	15
2.5.3	Slot 2	16
A	Summary	17
A.1	Status	17
A.2	Comments	17

1 Front

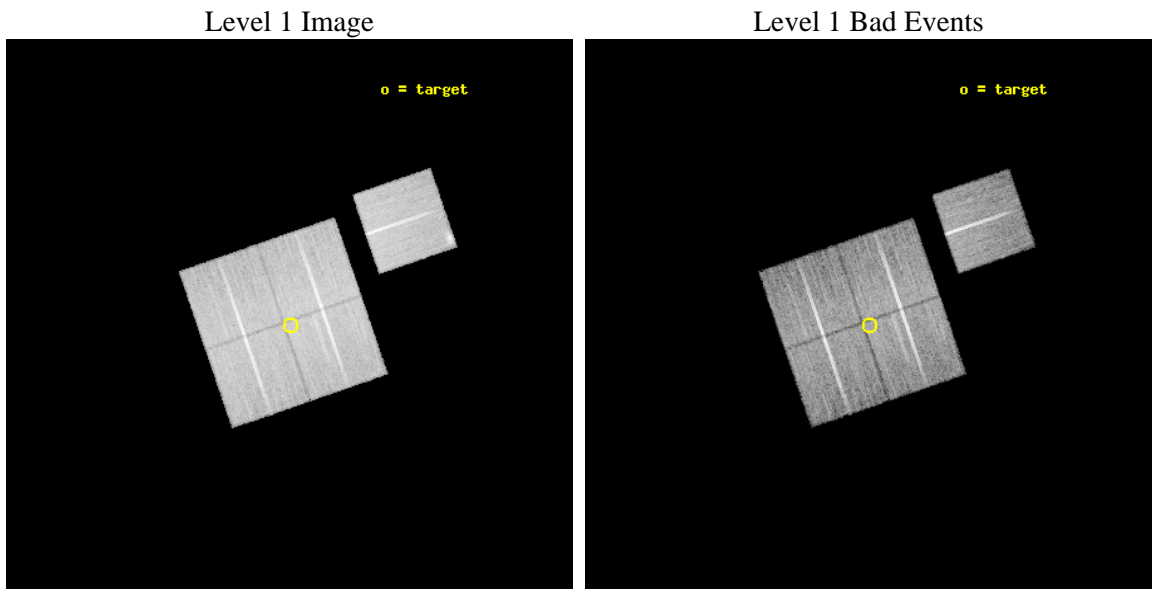
seq_num	800515	Sequence number
obs_id	5802	Observation id
title	Chandra Observations of the DLS Shear-Selected Cluster Survey	Prop
observer	Prof. John Hughes	Principal investigator
object	DLS J1356-1051	Source name
dtcycle	0	
cycle	P	events from which exps? Prim/Second/Both
ra_targ	209.028333	Observer's specified target RA [deg]
dec_targ	-10.854444	Observer's specified target Dec [deg]
ra_nom	209.03145720575	Nominal RA [deg]
dec_nom	-10.851002825117	Nominal Dec [deg]
roll_nom	71.046834841083	Nominal Roll [deg]
revision	3	Processing version of data
ontime	21069.561045557	Sum of GTIs [s]
livetime	20794.271719312	Livetime [s]
ontime0	21069.437945455	Sum of GTIs [s]
ontime1	21066.337995201	Sum of GTIs [s]
ontime2	21072.661005706	Sum of GTIs [s]
ontime3	21069.561045557	Sum of GTIs [s]
ontime6	21072.537905574	Sum of GTIs [s]
l2events	58787	Number of level 2 events



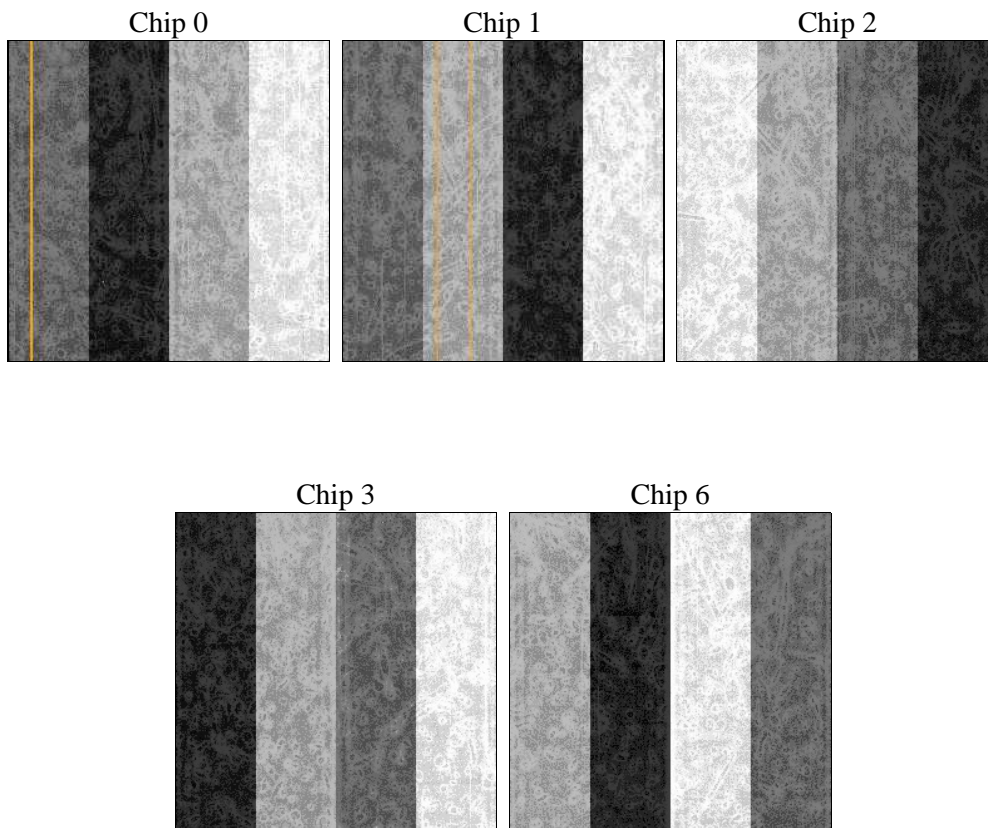
2 OBI

2.1 OBI

2.1.1 Images



2.1.2 Bias



2.1.3 Parameters

obi_num	0	Obi number	sched_exp_time	21300.000000	[s] Scheduled observation exposure time
ascdsver	8.5.1	Processing system revision	ontime	21069.561045557	Sum of GTIs [s]
caldbver	4.5.5	 	ontime0	21069.437945455	Sum of GTIs [s]
date	2012-12-18T07:50:40	Date and time of file creation	ontime1	21066.337995201	Sum of GTIs [s]
revision	3	Processing version of data	ontime2	21072.661005706	Sum of GTIs [s]
			ontime3	21069.561045557	Sum of GTIs [s]
			ontime6	21072.537905574	Sum of GTIs [s]
			l1events	652804	Number of level 1 events

2.1.4 Events

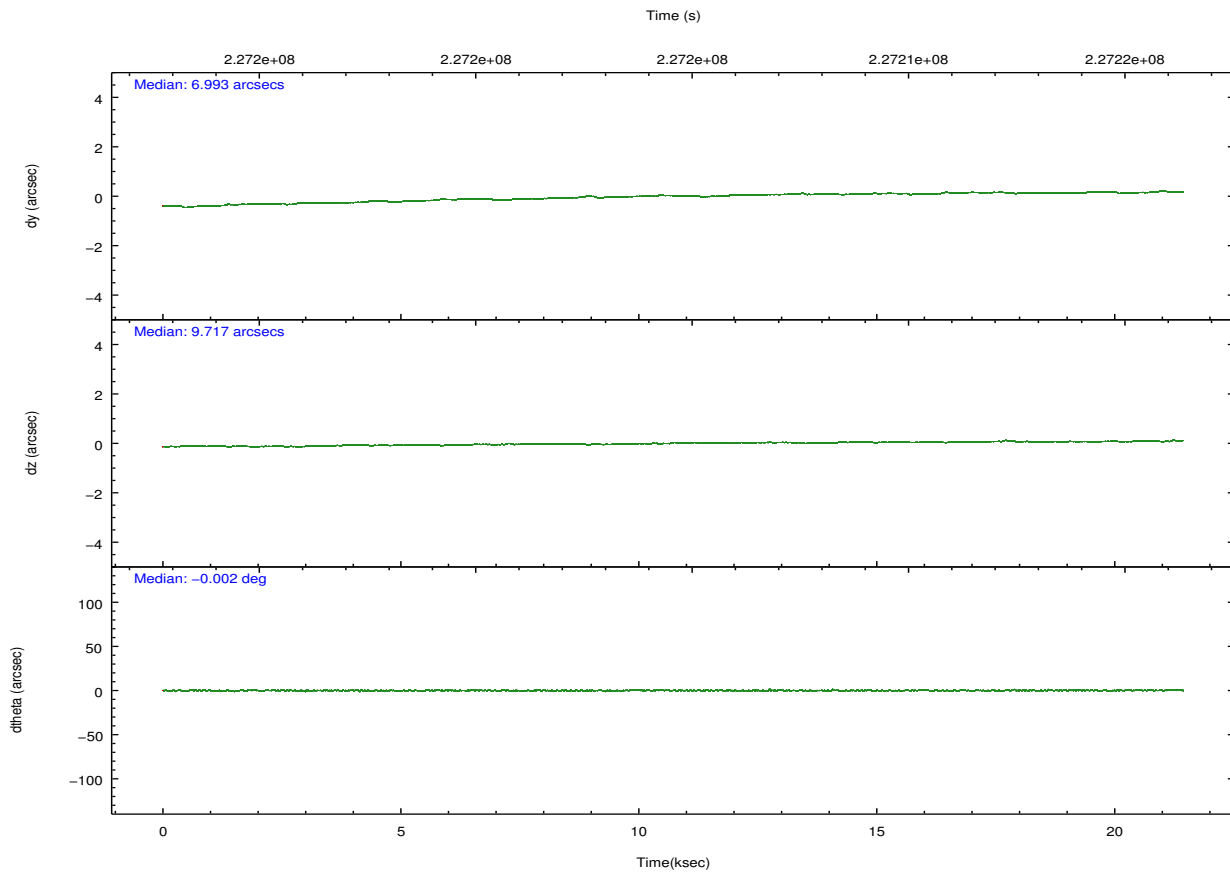
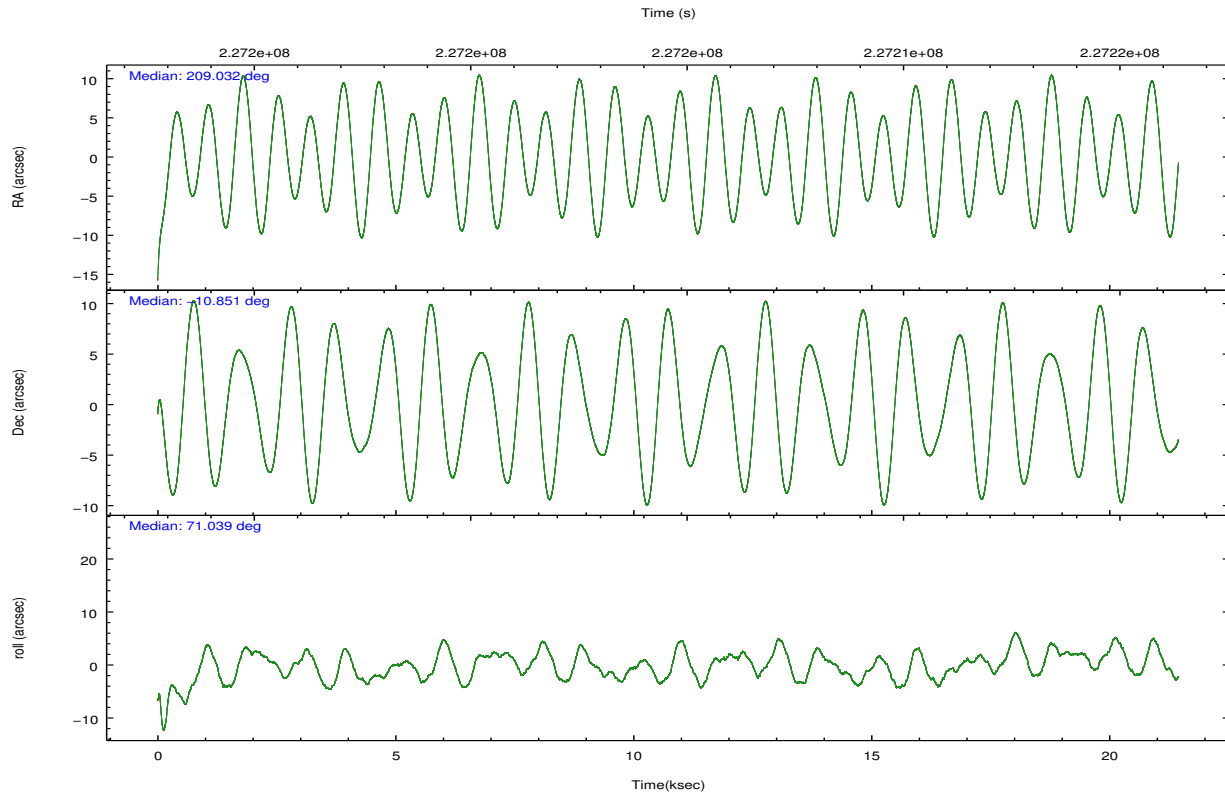
	ccd 0	ccd 1	ccd 2	ccd 3	ccd 6
level 1 events	124308	123116	137463	132428	135489
rejected events	110951	108148	124117	119740	119520
rejected %	89%	87%	90%	90%	88%

	ccd 0	ccd 1	ccd 2	ccd 3	ccd 6
grade 0 events	4749	5605	4970	4541	6749
	3%	4%	3%	3%	4%
grade 1 events	63	67	67	68	70
	0%	0%	0%	0%	0%
grade 2 events	3170	3320	3196	2713	3159
	2%	2%	2%	2%	2%
grade 3 events	1536	1633	1382	1478	1606
	1%	1%	1%	1%	1%
grade 4 events	1458	1563	1415	1429	1507
	1%	1%	1%	1%	1%
grade 5 events	4723	5006	4383	5238	5293
	3%	4%	3%	3%	3%
grade 6 events	2444	2854	2383	2528	2950
	1%	2%	1%	1%	2%
grade 7 events	106165	103068	119667	114433	114155
	85%	83%	87%	86%	84%

2.2 Compared Parameters

Parameter	Planned	Actual	Parameter	Planned	Actual
Instrument	ACIS	ACIS	Obspar format version number	7	7
Detector	ACIS-01236	ACIS-01236	Obspar file type	PREDICTED	ACTUAL
Grating	NONE	NONE	Obspar update status	NONE	UPDATED
Data mode	VFAINT	VFAINT	Number of optional ACIS chips dropped	0	0
Observation mode	POINTING	POINTING	On-chip summing requested	N	N
[deg] Pointing RA	209.036940	209.0314572057476	Subarray requested	NONE	NONE
[deg] Pointing Dec	-10.877844	-10.85100282511719	Alternating exposures requested	N	N
[deg] Pointing Roll	70.839173	71.04683484108295	[s] Primary exposure time	0.000000	3.1
[mm] SIM focus pos	-0.782348	-0.7809083437167272			
[mm] SIM defocus	0	0.001439871863259334			
[mm] SIM translation stage pos	-233.592463	-233.5874344608287			
[mm] SIM translation stage offset	0	-0.005018542100998502			
[s] Observation start time (MET)	227193984.184000	227192814.78285			
Observation start date	2005-03-14T13:25:20	2005-03-14T13:06:54			
[s] Observation end time (MET)	227215284.184000	227216127.8964			
Observation end date	2005-03-14T19:20:20	2005-03-14T19:35:27			
Read mode	TIMED	TIMED			

2.3 Aspect

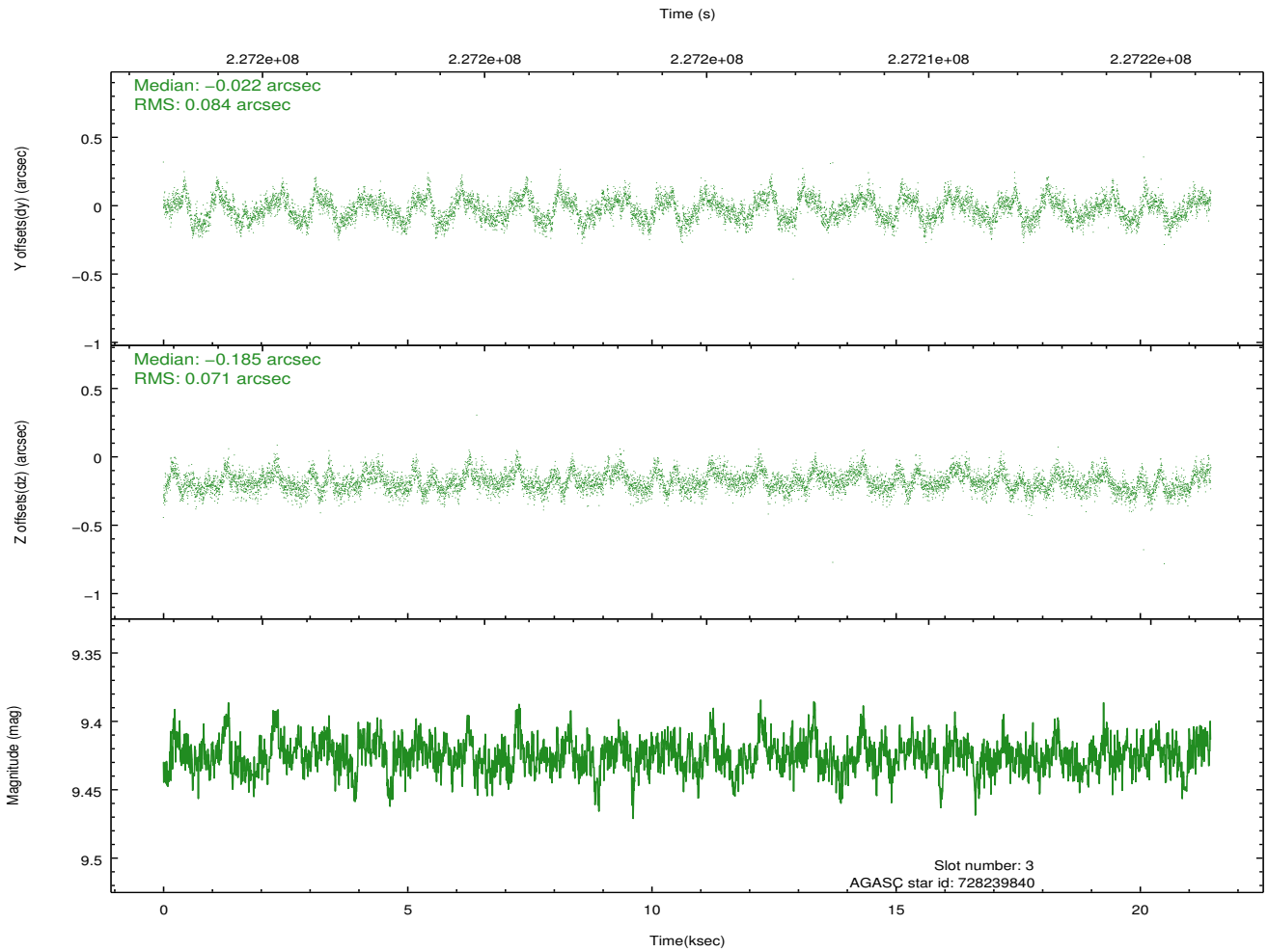
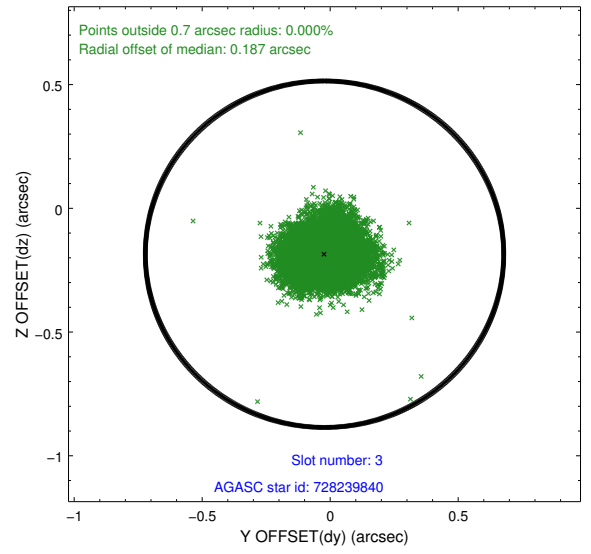
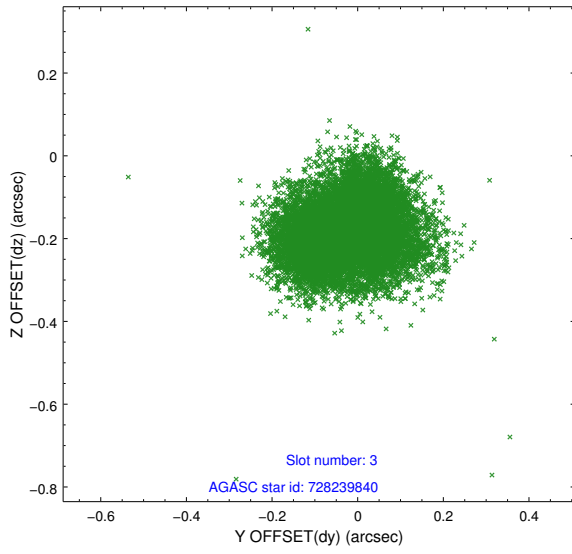


Slot Statistics

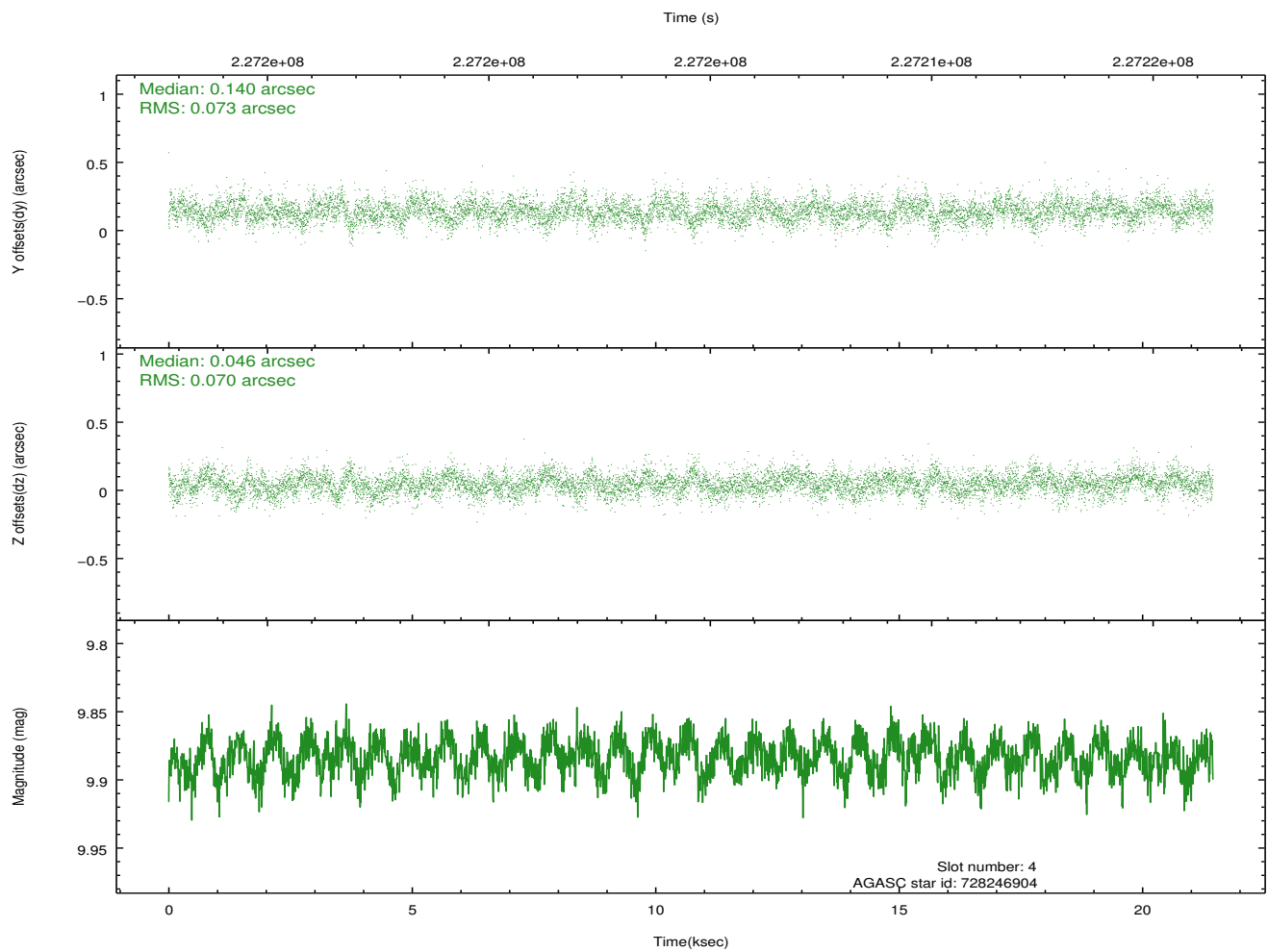
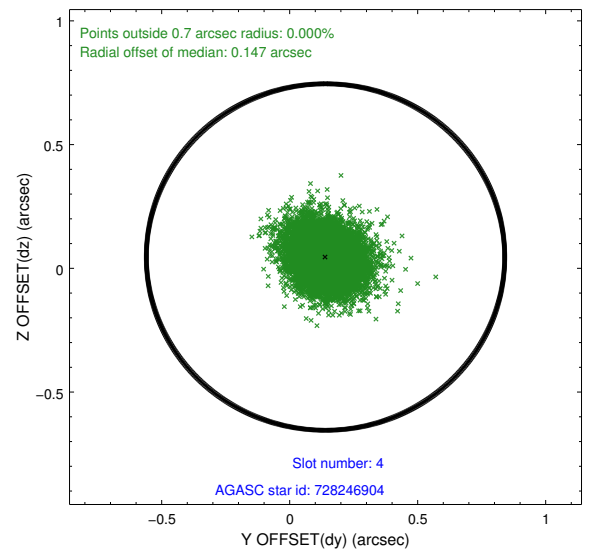
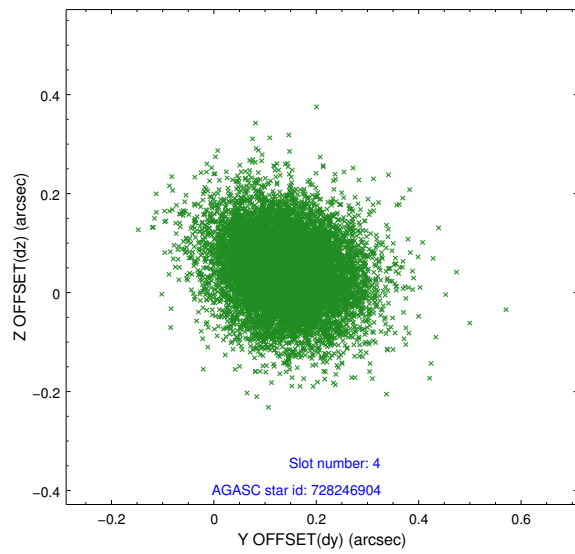
slot	status	id	mag	n_pts	med_dy	med_dz	dr1	dr2	ra	dec	mean_y	mean_z
0	FID	ACIS-I-1	7.24	5232	0.004	0.022	0.009	0.016	0.000000	0.000000	932.74	-833.14
1	FID	ACIS-I-5	7.23	5232	-0.162	0.025	0.008	0.015	0.000000	0.000000	-1815.45	1064.25
2	FID	ACIS-I-6	7.26	5231	0.067	0.024	0.008	0.014	0.000000	0.000000	398.16	1708.95
3	GUIDE	728239840	9.43	10461	-0.022	-0.185	0.119	0.184	208.570433	-10.891623	-589.39	1541.01
4	GUIDE	728246904	9.88	10452	0.140	0.046	0.107	0.178	208.922180	-11.454653	-2094.11	-299.06
5	GUIDE	728370040	8.49	10448	-0.075	-0.007	0.079	0.124	209.435918	-10.924599	303.15	-1387.55
6	GUIDE	728372688	9.67	10458	-0.200	0.087	0.129	0.204	209.641052	-10.631360	1538.09	-1728.22
7	GUIDE	728378760	8.44	10459	0.151	0.057	0.083	0.134	209.447556	-11.536817	-1765.78	-2147.20

2.4 Star Slots

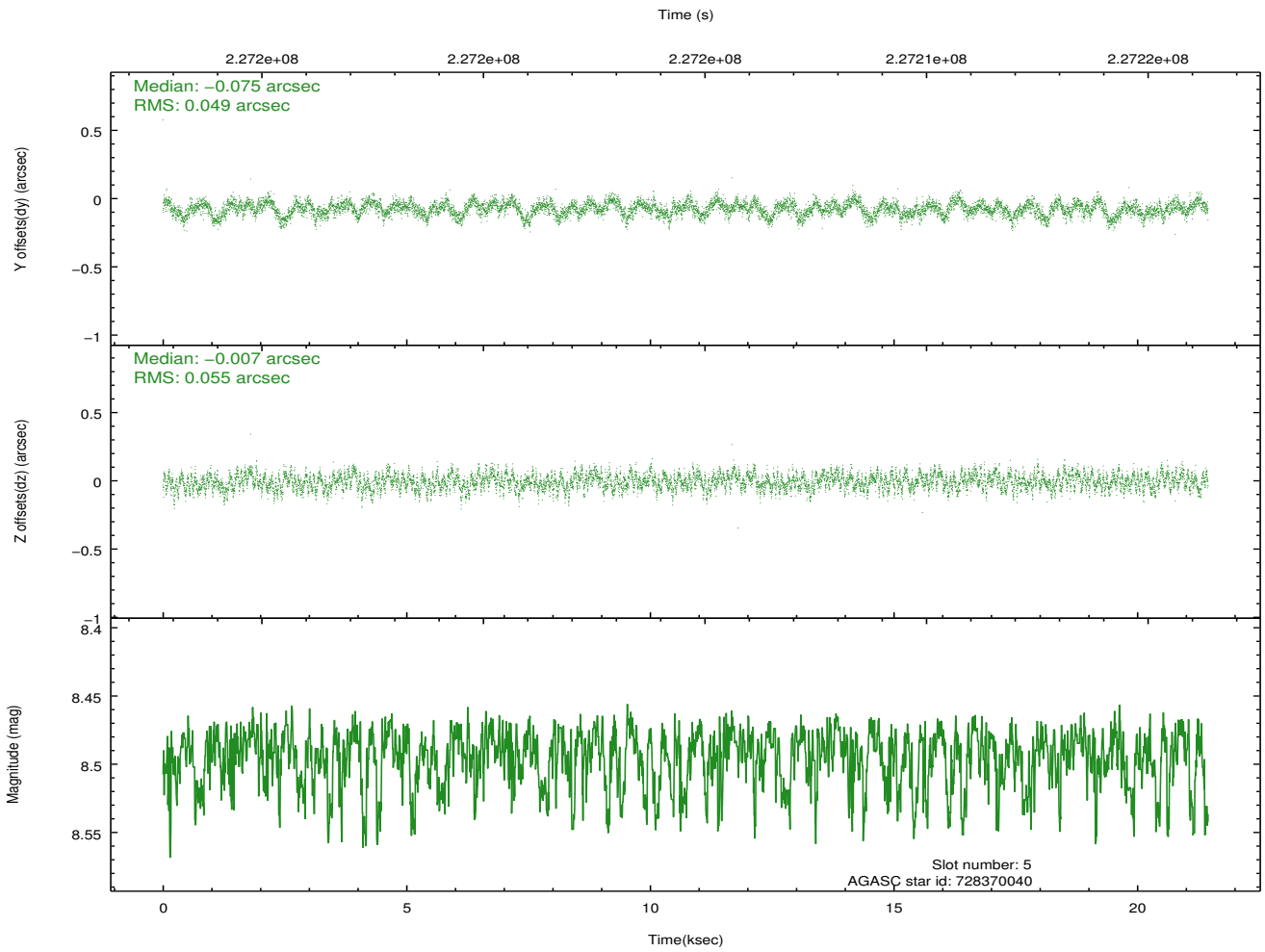
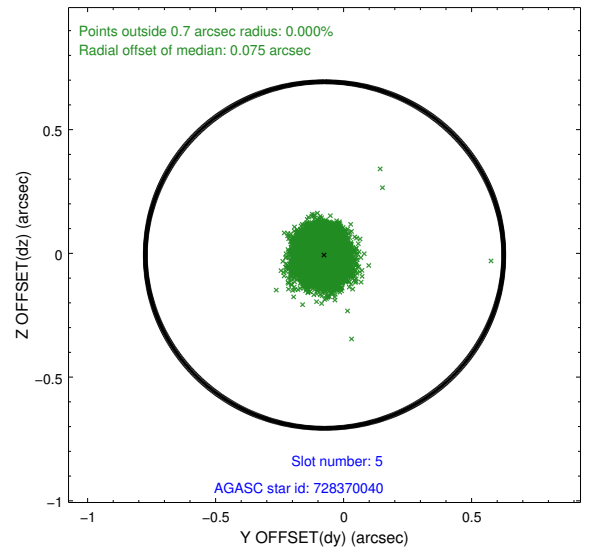
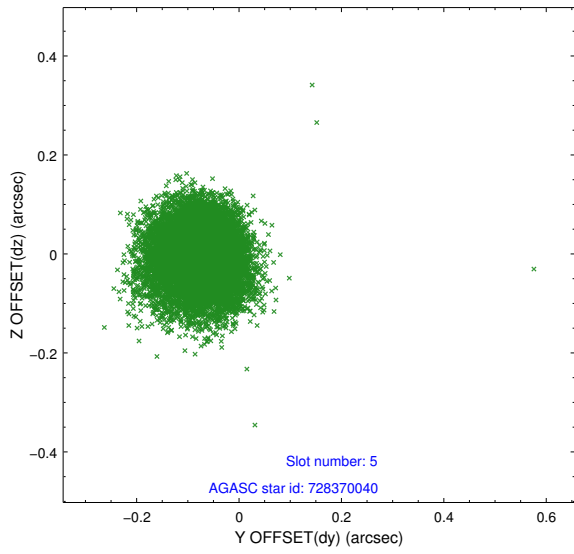
2.4.1 Slot 3



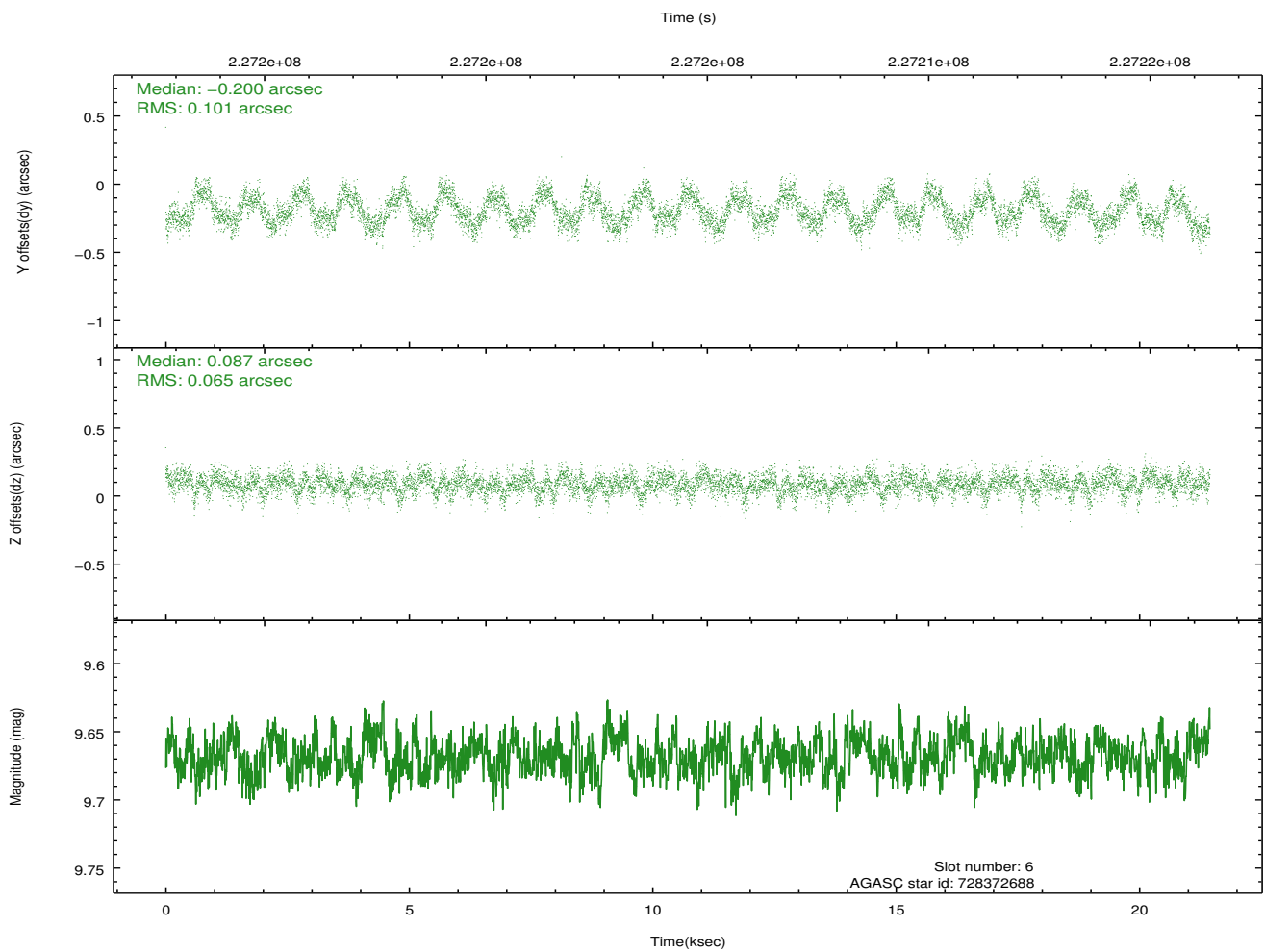
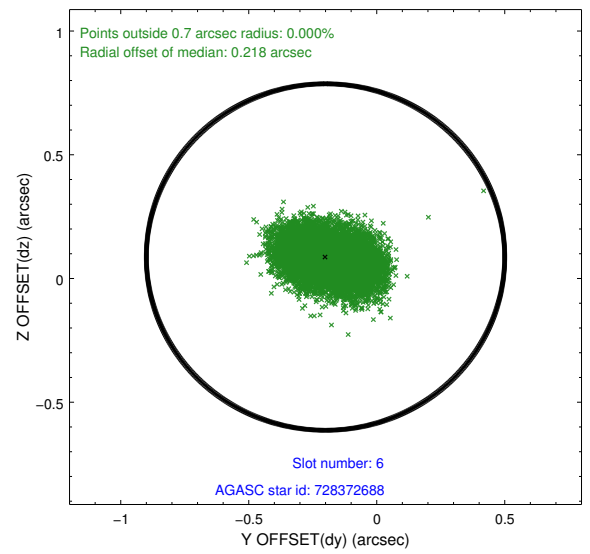
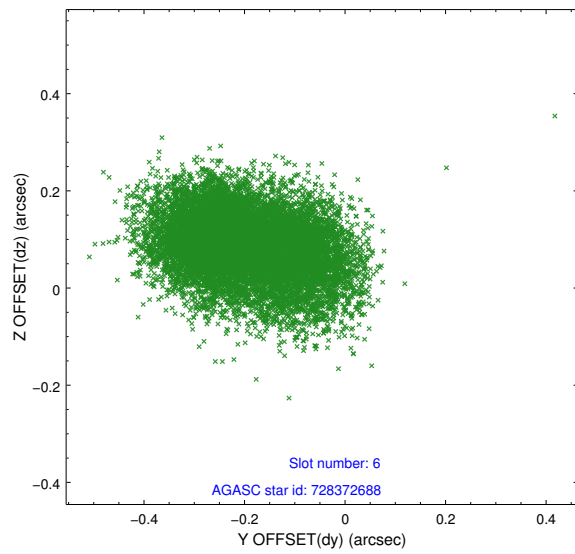
2.4.2 Slot 4



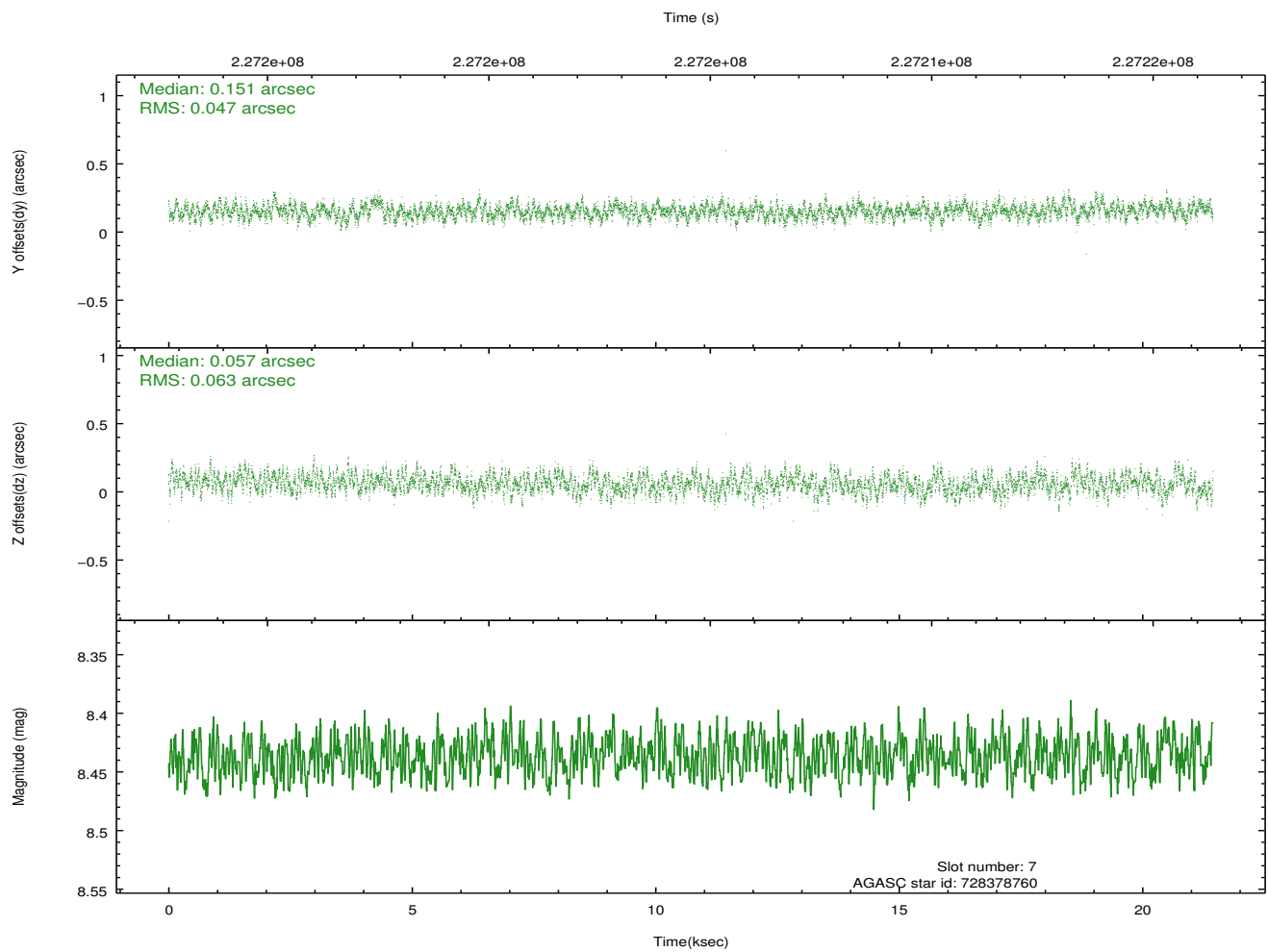
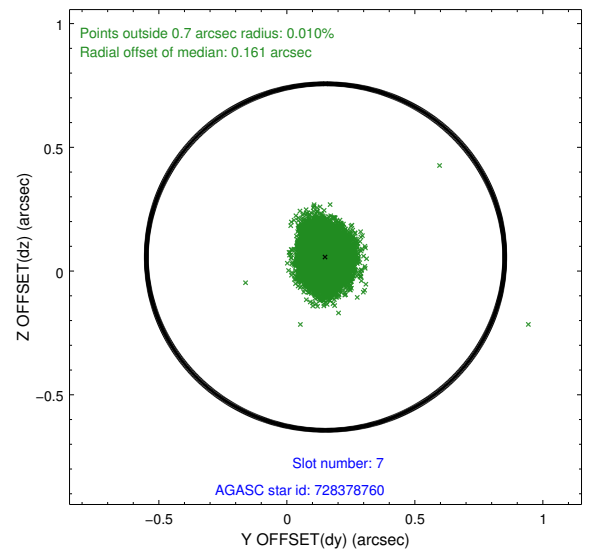
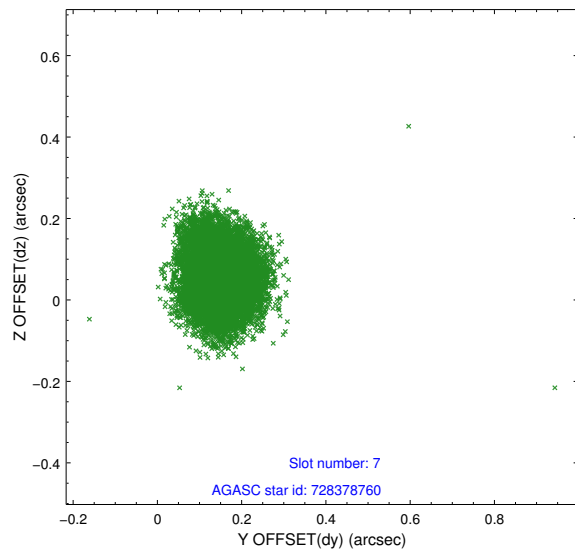
2.4.3 Slot 5



2.4.4 Slot 6

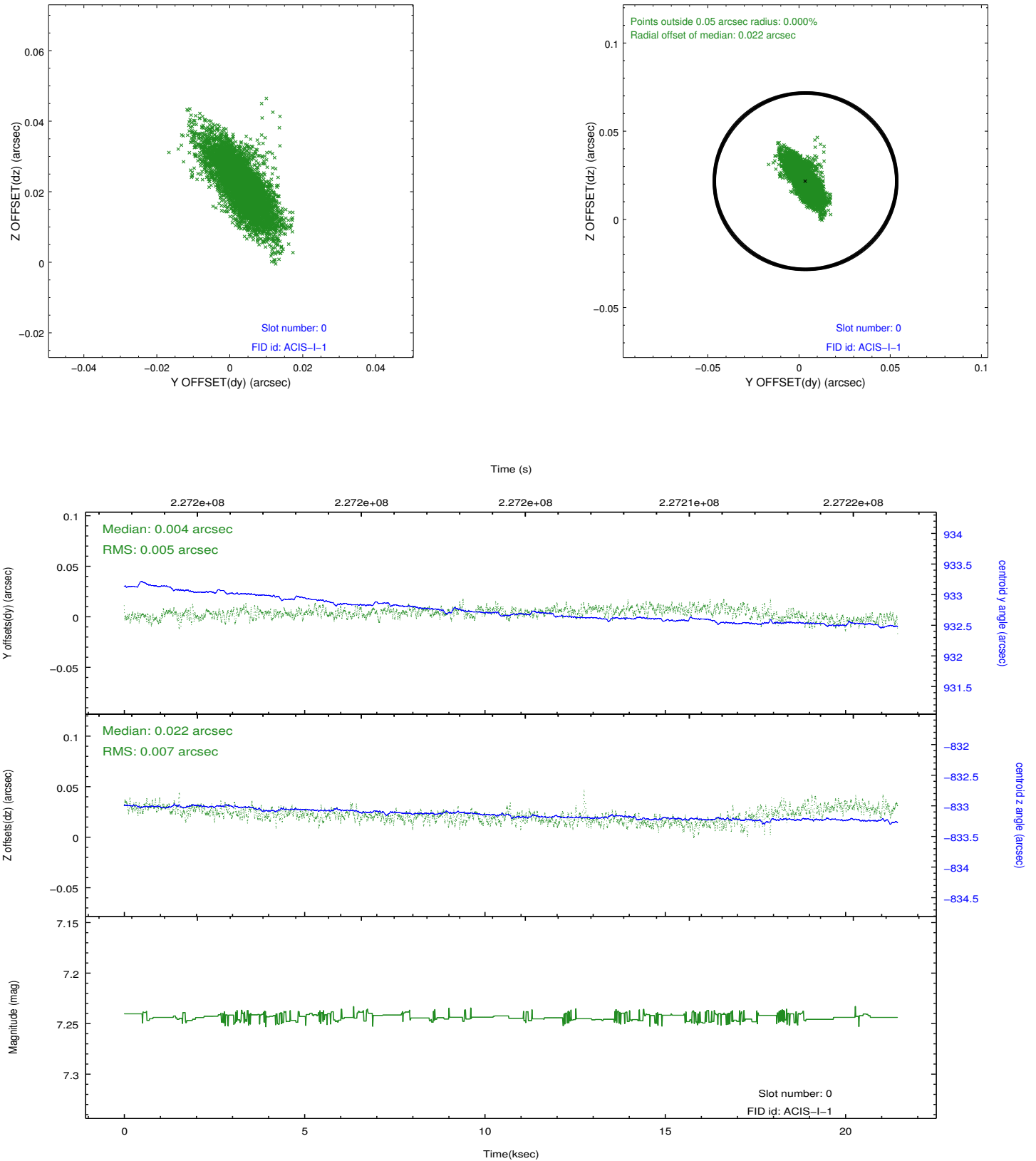


2.4.5 Slot 7

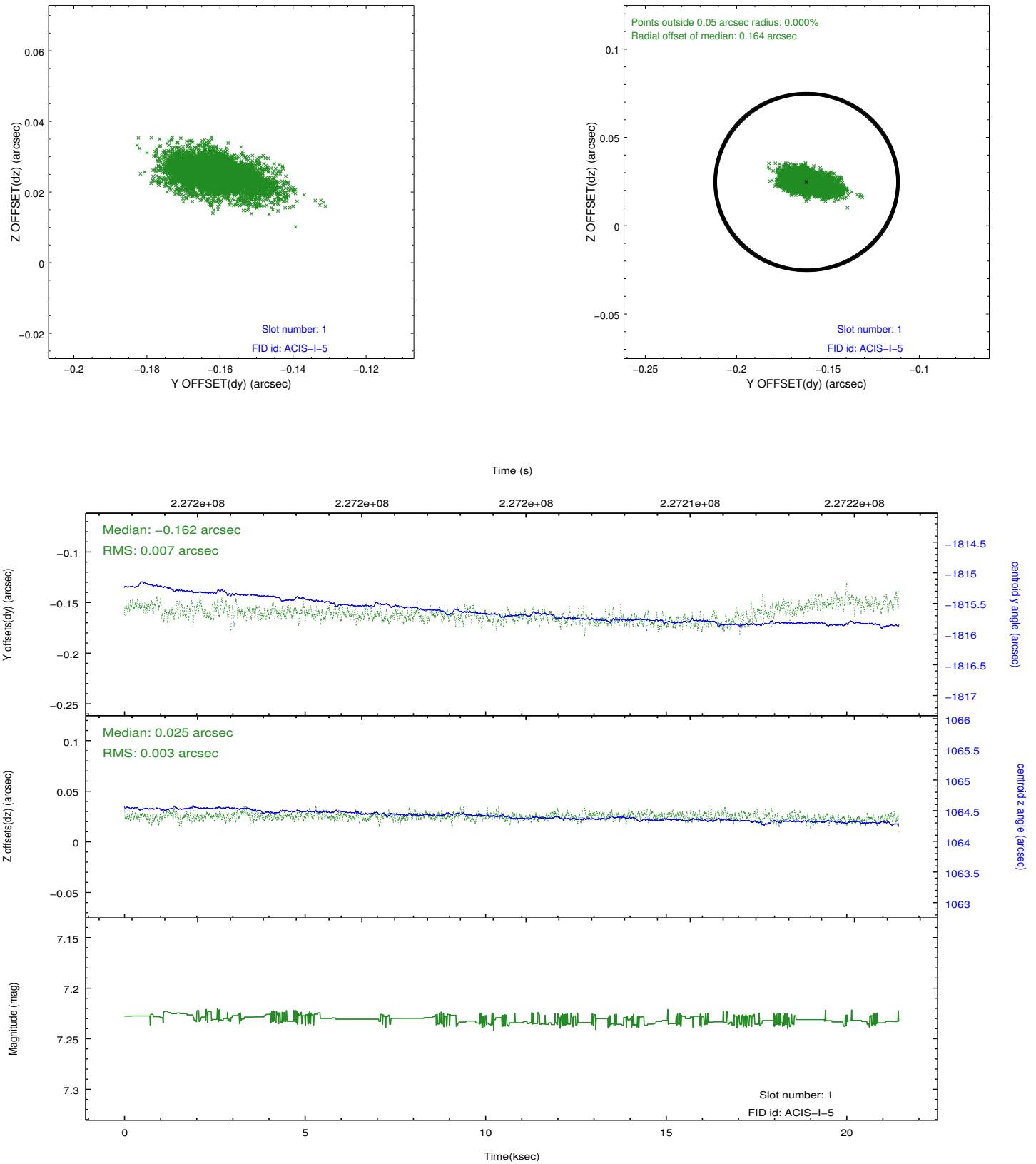


2.5 FID Slots

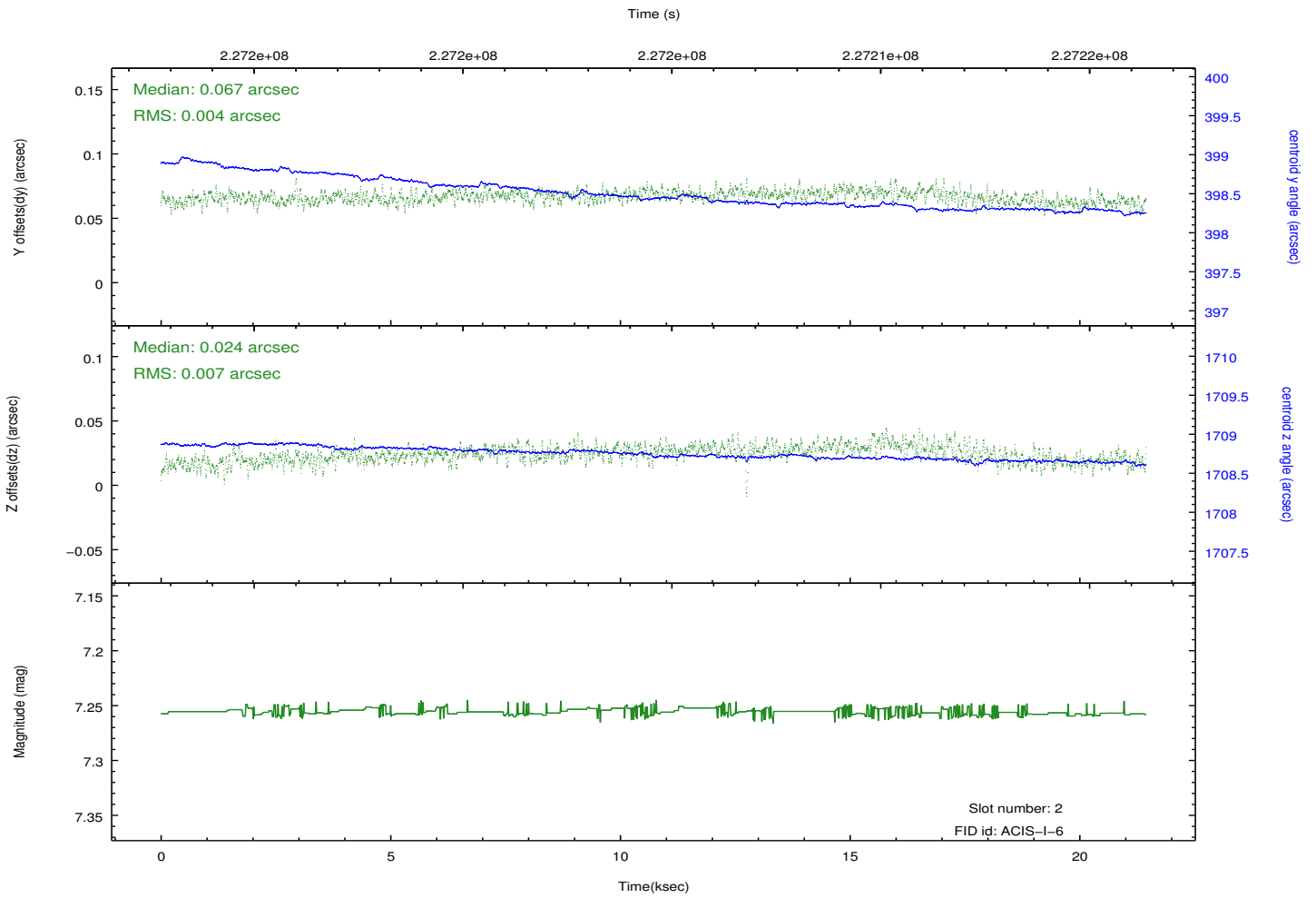
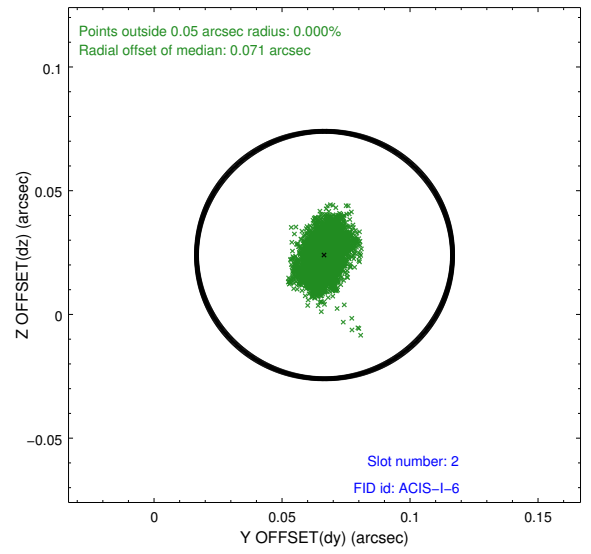
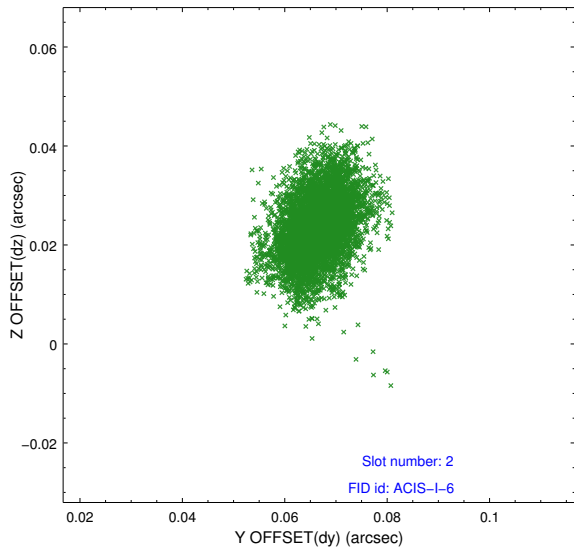
2.5.1 Slot 0



2.5.2 Slot 1



2.5.3 Slot 2



A Summary

A.1 Status

V&V Scientist	Jen Lauer
V&V Date (YYYY-MM-DD)	2013.01.11
V&V Edition	1
V&V Disposition and Status	OK
V&V Charge Time	21.07065

A.2 Comments