

V&V Reference Report

L2 ASCDS Version : 8.4.4

Observation 58482 - L2 Version 2
Chandra X-Ray Center

L2 Processing Date : Apr 21 2012

Contents

1	Front	2
2	OBI	3
2.1	OBI	3
2.1.1	Images	3
2.1.2	Bias	3
2.1.3	Parameters	4
2.1.4	Events	4
2.2	Compared Parameters	5
2.3	Star Slots	6
2.4	FID Slots	6
A	Summary	7
A.1	Status	7
A.2	Comments	7

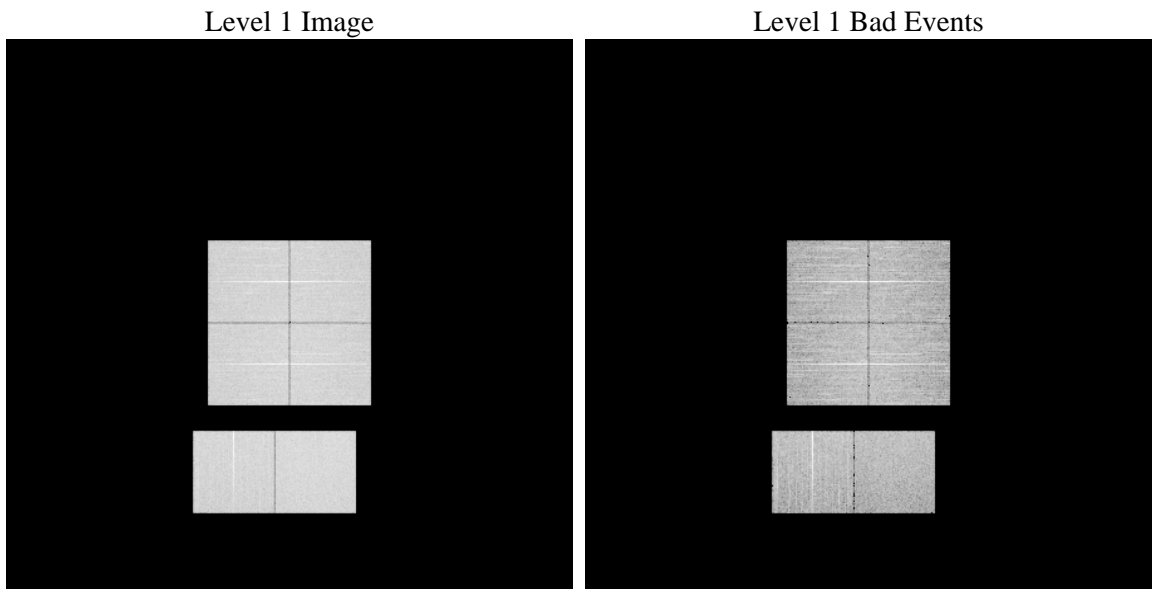
1 Front

seq_num	 	Sequence number
obs_id	58482	Observation id
title	ACIS-012367 diagnostics	Proposal title
observer	CHANDRA engineering request/realtime commanding	Principal investig
object	 	Source name
dtycycle	0	
cycle	P	events from which exps? Prim/Second/Both
ra_targ	0.0	Observer's specified target RA [deg]
dec_targ	0.0	Observer's specified target Dec [deg]
ra_nom	195.20551662311	Nominal RA [deg]
dec_nom	-17.971805020939	Nominal Dec [deg]
roll_nom	46.588800695099	Nominal Roll [deg]
revision	2	Processing version of data
ontime	7763.1999711394	Sum of GTIs [s]
livetime	7664.897658667	Livetime [s]
ontime0	7763.1999711394	Sum of GTIs [s]
ontime1	7763.1999711394	Sum of GTIs [s]
ontime2	7763.1999711394	Sum of GTIs [s]
ontime3	7763.1999711394	Sum of GTIs [s]
ontime6	7763.1999711394	Sum of GTIs [s]
ontime7	7763.1999711394	Sum of GTIs [s]
l2events	740582	Number of level 2 events

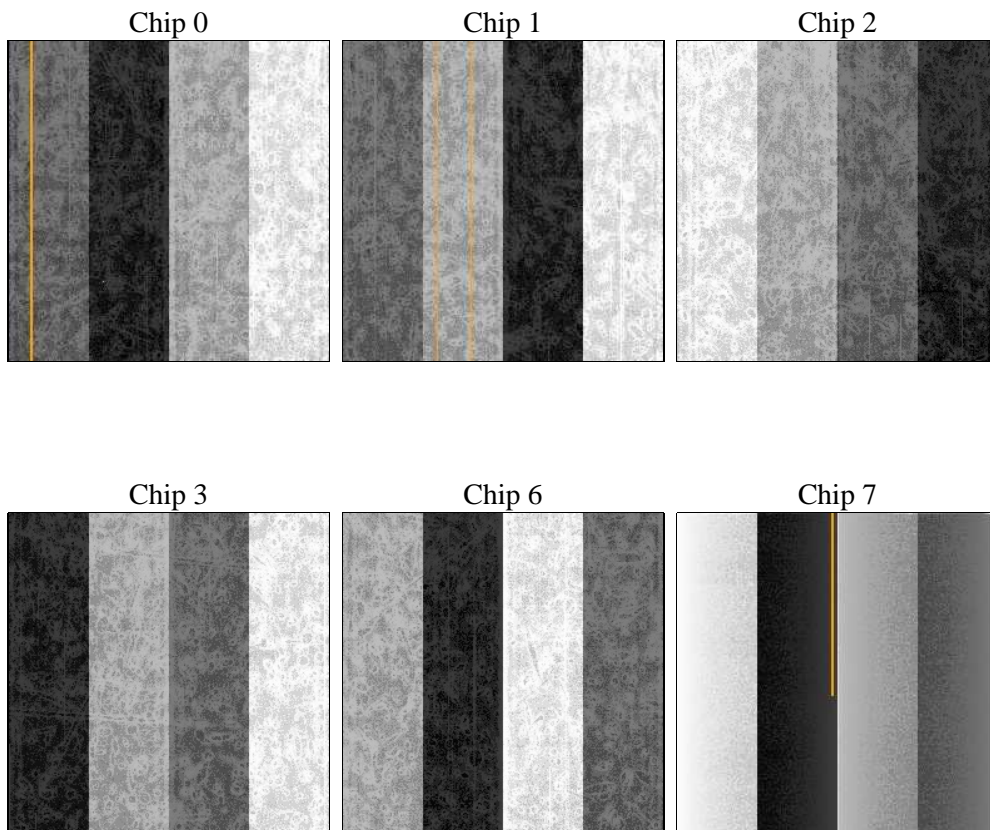
2 OBI

2.1 OBI

2.1.1 Images



2.1.2 Bias



2.1.3 Parameters

obi_num	0	Obi number	sched_exp_time	0.0	[s] Scheduled observation exposure time
ascdsver	8.4.4	Processing system revision	ontime	7763.1999711394	Sum of GTIs [s]
caldbver	4.4.9	 	ontime0	7763.1999711394	Sum of GTIs [s]
date	2012-04-21T17:42:59	Date and time of file creation	ontime1	7763.1999711394	Sum of GTIs [s]
revision	2	Processing version of data	ontime2	7763.1999711394	Sum of GTIs [s]
			ontime3	7763.1999711394	Sum of GTIs [s]
			ontime6	7763.1999711394	Sum of GTIs [s]
			ontime7	7763.1999711394	Sum of GTIs [s]
			l1events	1168962	Number of level 1 events

2.1.4 Events

	ccd 0	ccd 1	ccd 2	ccd 3	ccd 6	ccd 7		ccd 0	ccd 1	ccd 2	ccd 3	ccd 6	ccd 7
level 1 events	187032	185089	191735	193831	197656	213619	grade 0 events	66358	66028	68794	68657	68684	34277
rejected events	64290	61687	67248	69370	68230	57801		35%	35%	35%	35%	34%	16%
rejected %	34%	33%	35%	35%	34%	27%	grade 1 events	455	393	515	505	396	169
								0%	0%	0%	0%	0%	0%
							grade 2 events	21619	22453	21125	21334	22625	34076
								11%	12%	11%	11%	11%	15%
							grade 3 events	8174	7958	8312	8400	8321	15120
								4%	4%	4%	4%	4%	7%
							grade 4 events	8134	8015	8380	8195	8337	14885
								4%	4%	4%	4%	4%	6%
							grade 5 events	3559	3726	3496	3925	3959	9779
								1%	2%	1%	2%	2%	4%
							grade 6 events	18457	18948	17876	17875	21459	57460
								9%	10%	9%	9%	10%	26%
							grade 7 events	60276	57568	63237	64940	63875	47853
								32%	31%	32%	33%	32%	22%

2.2 Compared Parameters

Parameter	Planned	Actual	Parameter	Planned	Actual
Instrument	ACIS	ACIS	Obspar format version number	7	7
Detector	ACIS-012367	ACIS-012367	Obspar file type	PREDICTED	ACTUAL
Grating	NONE	NONE	Obspar update status	NONE	UPDATED
Data mode	FAINT	FAINT	On-chip summing requested	N	N
Observation mode	SECONDARY	SECONDARY	Subarray requested	NONE	NONE
[deg] Pointing RA	0	195.20551662311	Alternating exposures requested	N	N
[deg] Pointing Dec	0	-17.97180502093866	[s] Primary exposure time	3.2	3.2
[deg] Pointing Roll	0.0	46.58880069509942			
[mm] SIM focus pos	-0.782348	-0.6828225247311905			
[mm] SIM defocus	0	0.8505141146731063			
[mm] SIM translation stage pos	-233.592463	250.466033080201			
[mm] SIM translation stage offset	0	-0.01005468664627074			
[s] Observation start time (MET)	290366023.107411	290366022.08242			
Observation start date	2007-03-15T17:13:43	2007-03-15T17:13:42			
[s] Observation end time (MET)	290384182.008276	290384180.98328			
Observation end date	2007-03-15T22:16:22	2007-03-15T22:16:20			
Read mode	TIMED	TIMED			

2.3 Star Slots

2.4 FID Slots

A Summary

A.1 Status

V&V Scientist	Beth Sundheim
V&V Date (YYYY-MM-DD)	2012.04.23
V&V Edition	1
V&V Disposition and Status	OK
V&V Charge Time	7.7631999711394

A.2 Comments