

# V&V Reference Report

## L2 ASCDS Version : 8.4.4

Observation 58502 - L2 Version 2  
Chandra X-Ray Center

L2 Processing Date : Apr 21 2012

## Contents

<b>1</b>	<b>Front</b>	<b>2</b>
<b>2</b>	<b>OBI</b>	<b>3</b>
2.1	OBI . . . . .	3
2.1.1	Images . . . . .	3
2.1.2	Bias . . . . .	3
2.1.3	Parameters . . . . .	4
2.1.4	Events . . . . .	4
2.2	Compared Parameters . . . . .	5
2.3	Star Slots . . . . .	6
2.4	FID Slots . . . . .	6
<b>A</b>	<b>Summary</b>	<b>7</b>
A.1	Status . . . . .	7
A.2	Comments . . . . .	7

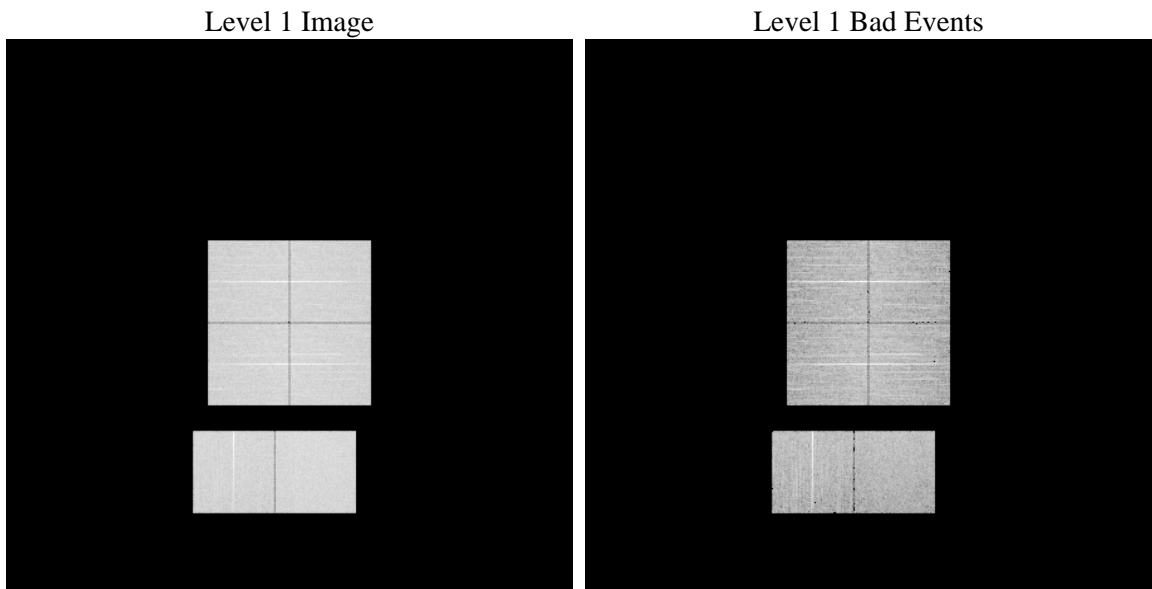
# 1 Front

seq_num	&#160	Sequence number
obs_id	58502	Observation id
title	ACIS-012367 diagnostics	Proposal title
observer	CHANDRA engineering request/realtime commanding	Principal investig
object	&#160	Source name
dtycle	0	&#160
cycle	P	events from which exps? Prim/Second/Both
ra_targ	0.0	Observer's specified target RA [deg]
dec_targ	0.0	Observer's specified target Dec [deg]
ra_nom	158.22938340966	Nominal RA [deg]
dec_nom	-21.29257618439	Nominal Dec [deg]
roll_nom	338.43295217488	Nominal Roll [deg]
revision	2	Processing version of data
ontime	8273.7178994417	Sum of GTIs [s]
livetime	8168.9511015642	Livetime [s]
ontime0	8273.6768594384	Sum of GTIs [s]
ontime1	8273.6358194351	Sum of GTIs [s]
ontime2	8273.5947794318	Sum of GTIs [s]
ontime3	8273.758939445	Sum of GTIs [s]
ontime6	8273.5537394285	Sum of GTIs [s]
ontime7	8273.7178994417	Sum of GTIs [s]
l2events	770963	Number of level 2 events

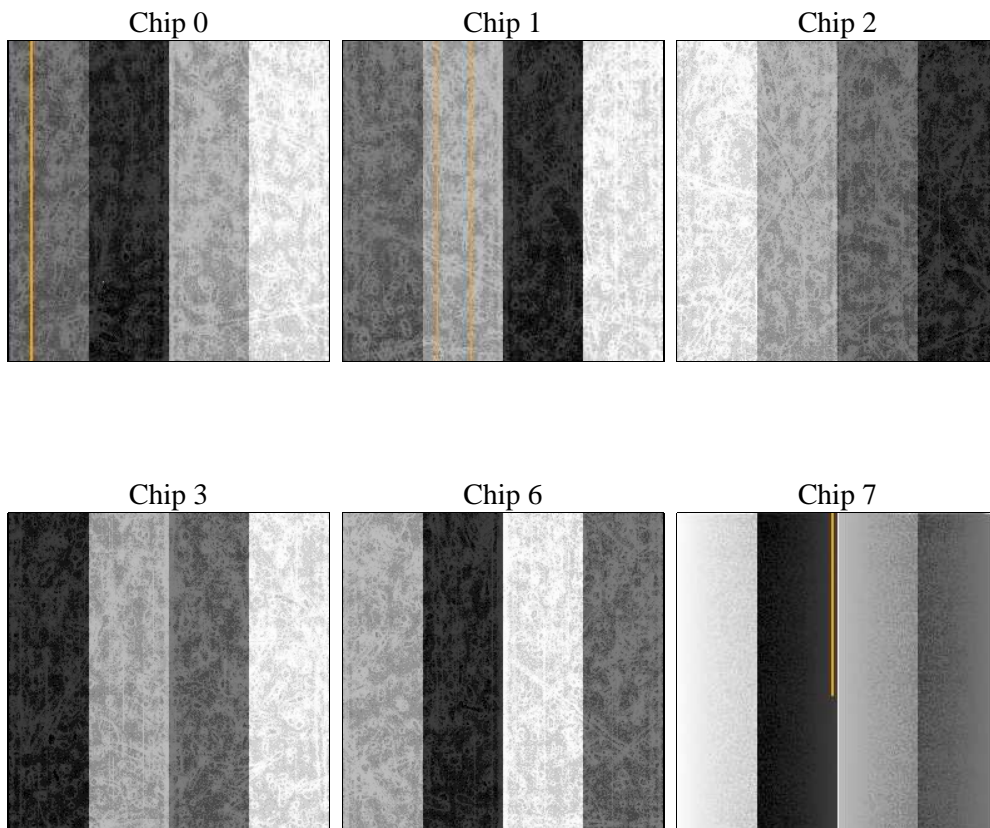
## 2 OBI

### 2.1 OBI

#### 2.1.1 Images



#### 2.1.2 Bias



### 2.1.3 Parameters

obi_num	0	Obi number	sched_exp_time	0.0	[s] Scheduled observation exposure time
ascdsver	8.4.4	Processing system revision	ontime	8273.7178994417	Sum of GTIs [s]
caldbver	4.4.9	&#160	ontime0	8273.6768594384	Sum of GTIs [s]
date	2012-04-21T03:38:19	Date and time of file creation	ontime1	8273.6358194351	Sum of GTIs [s]
revision	2	Processing version of data	ontime2	8273.5947794318	Sum of GTIs [s]
			ontime3	8273.758939445	Sum of GTIs [s]
			ontime6	8273.5537394285	Sum of GTIs [s]
			ontime7	8273.7178994417	Sum of GTIs [s]
			l1events	1227865	Number of level 1 events

### 2.1.4 Events

	ccd 0	ccd 1	ccd 2	ccd 3	ccd 6	ccd 7		ccd 0	ccd 1	ccd 2	ccd 3	ccd 6	ccd 7
level 1 events	196832	196487	202018	204609	205085	222834	grade 0 events	70105	69079	71962	72066	71756	34223
rejected events	68070	67922	72209	74404	70714	61904		35%	35%	35%	35%	34%	15%
rejected %	34%	34%	35%	36%	34%	27%	grade 1 events	460	403	528	529	422	181
								0%	0%	0%	0%	0%	0%
							grade 2 events	22548	23151	21923	22292	23581	35039
								11%	11%	10%	10%	11%	15%
							grade 3 events	8452	8377	8775	8733	8620	15619
								4%	4%	4%	4%	4%	7%
							grade 4 events	8453	8529	8586	8760	8494	15377
								4%	4%	4%	4%	4%	6%
							grade 5 events	3851	3982	3597	4187	4283	10352
								1%	2%	1%	2%	2%	4%
							grade 6 events	19204	19429	18563	18354	21920	60672
								9%	9%	9%	8%	10%	27%
							grade 7 events	63759	63537	68084	69688	66009	51371
								32%	32%	33%	34%	32%	23%

## 2.2 Compared Parameters

Parameter	Planned	Actual	Parameter	Planned	Actual
Instrument	ACIS	ACIS	Obspar format version number	7	7
Detector	ACIS-012367	ACIS-012367	Obspar file type	PREDICTED	ACTUAL
Grating	NONE	NONE	Obspar update status	NONE	UPDATED
Data mode	FAINT	FAINT	On-chip summing requested	N	N
Observation mode	SECONDARY	SECONDARY	Subarray requested	NONE	NONE
[deg] Pointing RA	0	158.2293834096618	Alternating exposures requested	N	N
[deg] Pointing Dec	0	-21.29257618438966	[s] Primary exposure time	3.2	3.2
[deg] Pointing Roll	0.0	338.4329521748812			
[mm] SIM focus pos	-0.782348	-0.6828225247311905			
[mm] SIM defocus	0	0.8505141146731063			
[mm] SIM translation stage pos	-233.592463	250.466033080201			
[mm] SIM translation stage offset	0	-0.01005468664627074			
[s] Observation start time (MET)	289723725.276846	289723724.25186			
Observation start date	2007-03-08T06:48:45	2007-03-08T06:48:44			
[s] Observation end time (MET)	289746699.627938	289746698.60295			
Observation end date	2007-03-08T13:11:40	2007-03-08T13:11:38			
Read mode	TIMED	TIMED			

**2.3 Star Slots**

**2.4 FID Slots**

# A Summary

## A.1 Status

V&V Scientist	Beth Sundheim
V&V Date (YYYY-MM-DD)	2012.04.22
V&V Edition	1
V&V Disposition and Status	OK
V&V Charge Time	8.2737178994417

## A.2 Comments