

V&V Reference Report

L2 ASCDS Version : 8.5.1.1

Observation 5952 - L2 Version 4
Chandra X-Ray Center

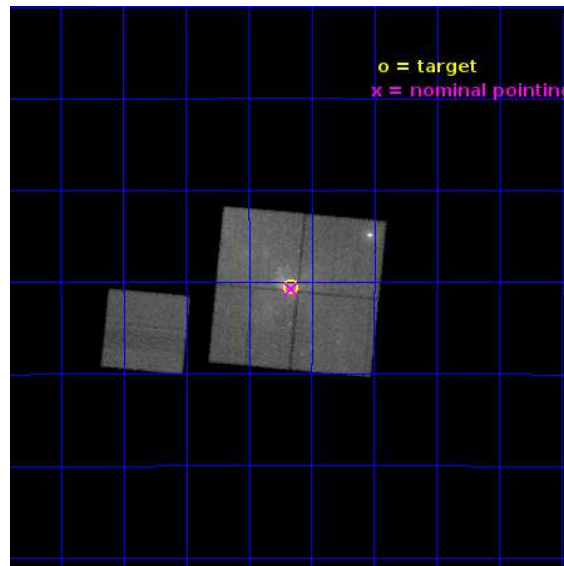
L2 Processing Date : Jul 23 2015

Contents

1	Front	2
2	OBI	3
2.1	OBI	3
2.1.1	Images	3
2.1.2	Bias	3
2.1.3	Parameters	4
2.1.4	Events	4
2.2	Compared Parameters	5
2.3	Aspect	6
2.4	Star Slots	9
2.4.1	Slot 3	9
2.4.2	Slot 4	10
2.4.3	Slot 5	11
2.4.4	Slot 6	12
2.4.5	Slot 7	13
2.5	FID Slots	14
2.5.1	Slot 0	14
2.5.2	Slot 1	15
2.5.3	Slot 2	16
A	Summary	17
A.1	Status	17
A.2	Comments	17

1 Front

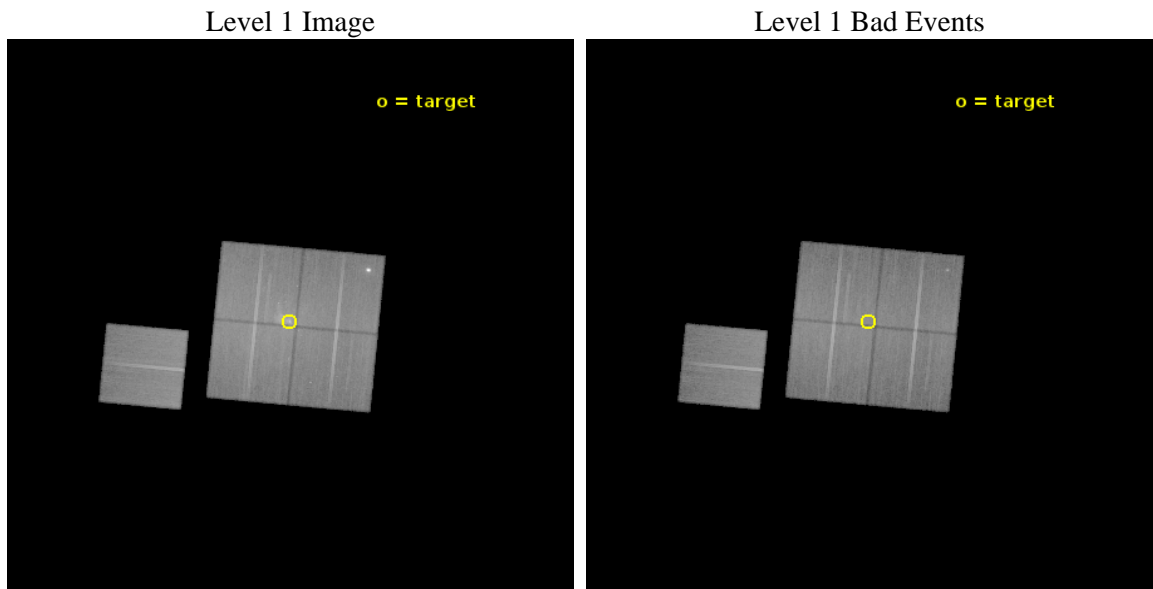
seq_num	600471	Sequence number
obs_id	5952	Observation id
title	Simultaneous Gamma-Ray to Sub-Millimeter Monitoring of Sagittarius A*	Proposal title
observer	Dr. Frederick Baganoff	Principal investigator
object	Sgr A*	Source name
dtycycle	0	
cycle	P	events from which exps? Prim/Second/Both
ra_targ	266.416667	Observer's specified target RA [deg]
dec_targ	-29.007778	Observer's specified target Dec [deg]
ra_nom	266.41508152481	Nominal RA [deg]
dec_nom	-29.012214923856	Nominal Dec [deg]
roll_nom	275.48089944675	Nominal Roll [deg]
revision	4	Processing version of data
ontime	45926.14010486	Sum of GTIs [s]
livetime	45326.081274058	Livetime [s]
ontime0	45922.999154449	Sum of GTIs [s]
ontime1	45926.140124857	Sum of GTIs [s]
ontime2	45926.140124768	Sum of GTIs [s]
ontime3	45926.14010486	Sum of GTIs [s]
ontime6	45929.281115025	Sum of GTIs [s]
l2events	472863	Number of level 2 events



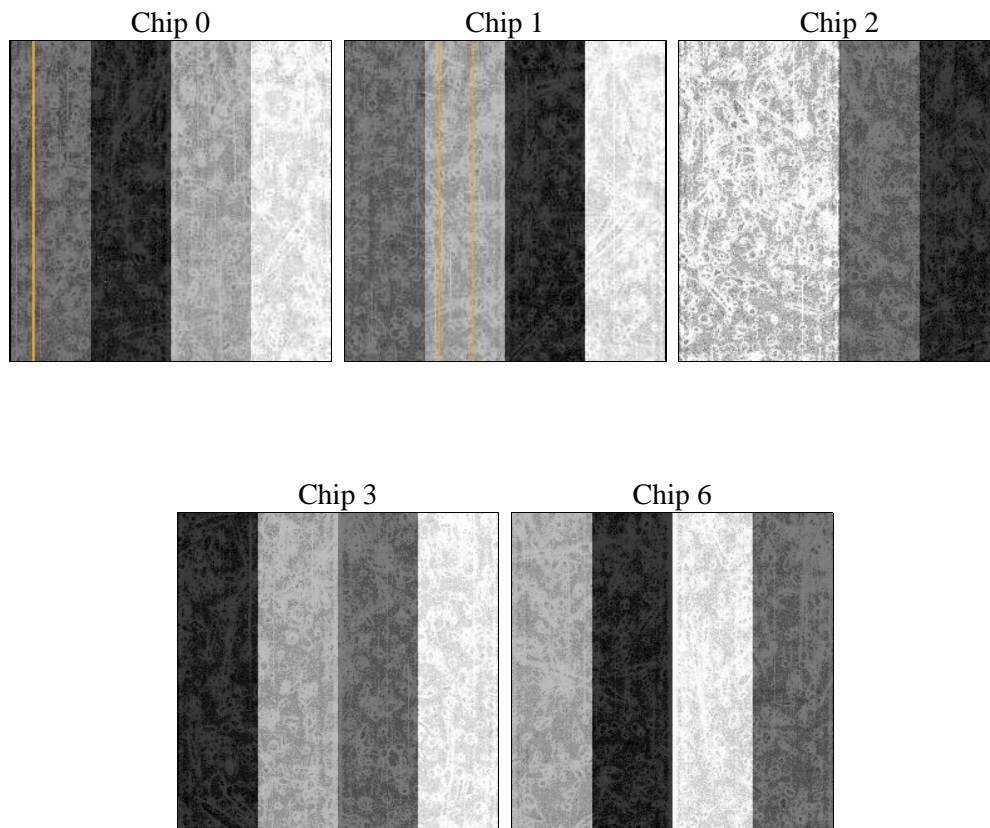
2 OBI

2.1 OBI

2.1.1 Images



2.1.2 Bias



2.1.3 Parameters

obi_num	1	Obi number	sched_exp_time	45800.000000	[s] Scheduled observation exposure time
ascdsver	10.4.1	Processing system revision	ontime	45926.14010486	Sum of GTIs [s]
caldbver	4.6.8	 	ontime0	45922.999154449	Sum of GTIs [s]
date	2015-07-23T16:17:21	Date and time of file creation	ontime1	45926.140124857	Sum of GTIs [s]
revision	4	Processing version of data	ontime2	45926.140124768	Sum of GTIs [s]
			ontime3	45926.14010486	Sum of GTIs [s]
			ontime6	45929.281115025	Sum of GTIs [s]
			l1events	2299050	Number of level 1 events

2.1.4 Events

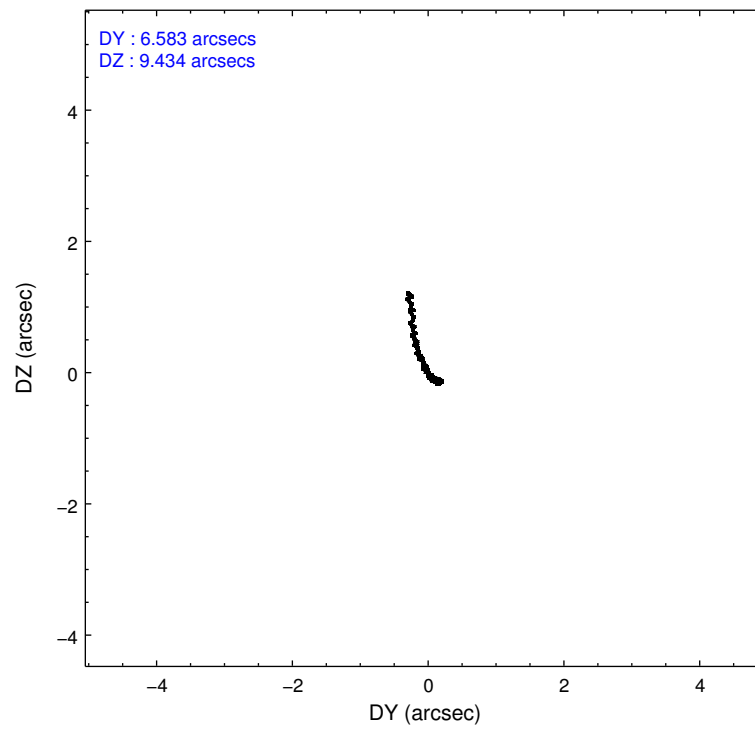
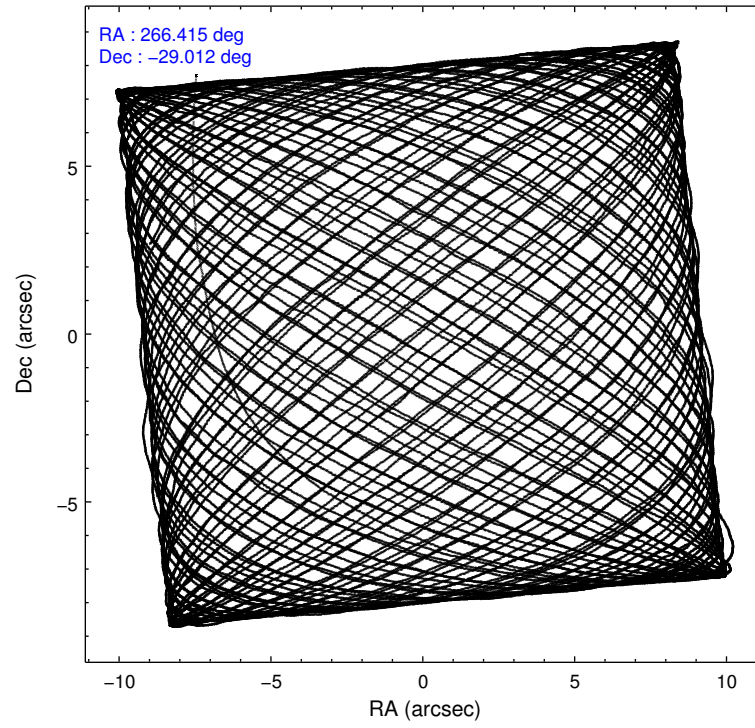
	ccd 0	ccd 1	ccd 2	ccd 3	ccd 6
level 1 events	404561	457081	483499	511429	442480
rejected events	311760	334556	378821	366191	372362
rejected %	77%	73%	78%	71%	84%

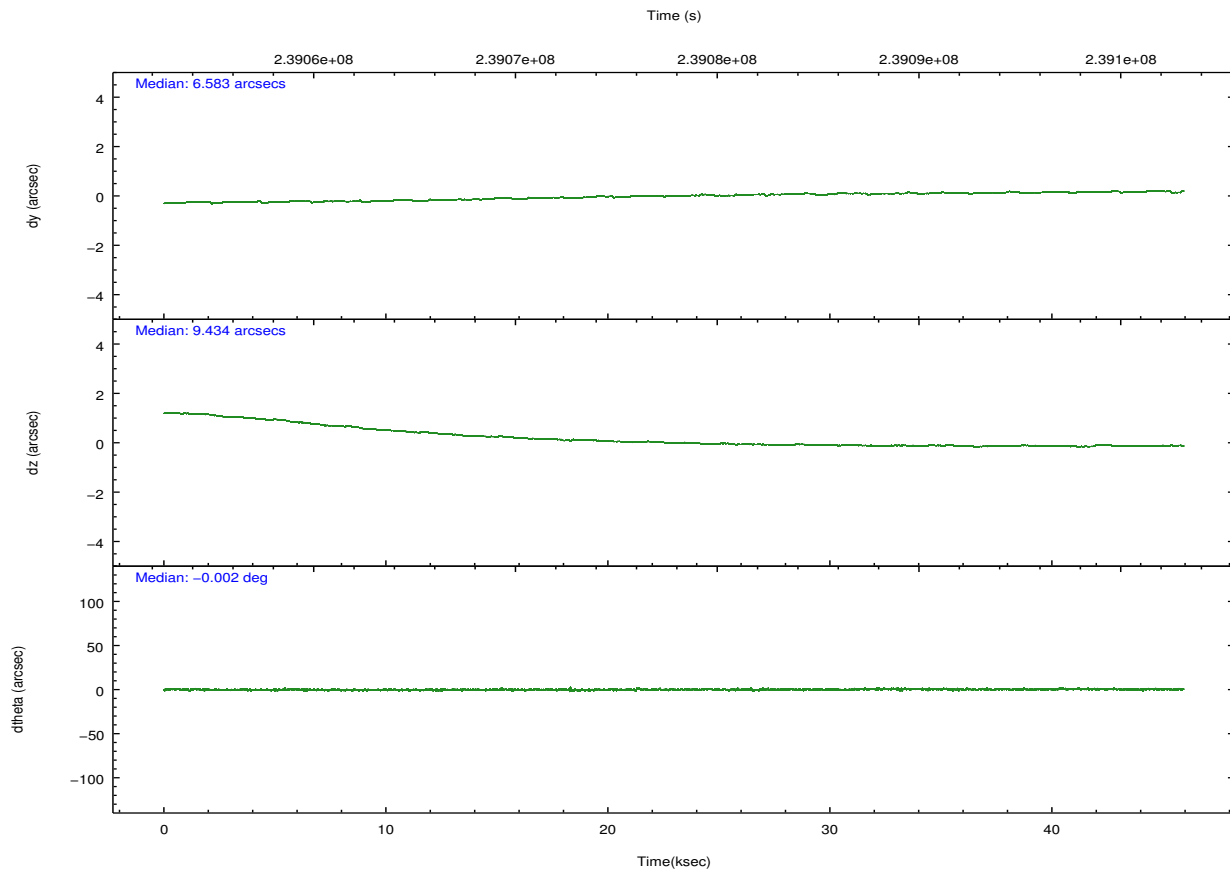
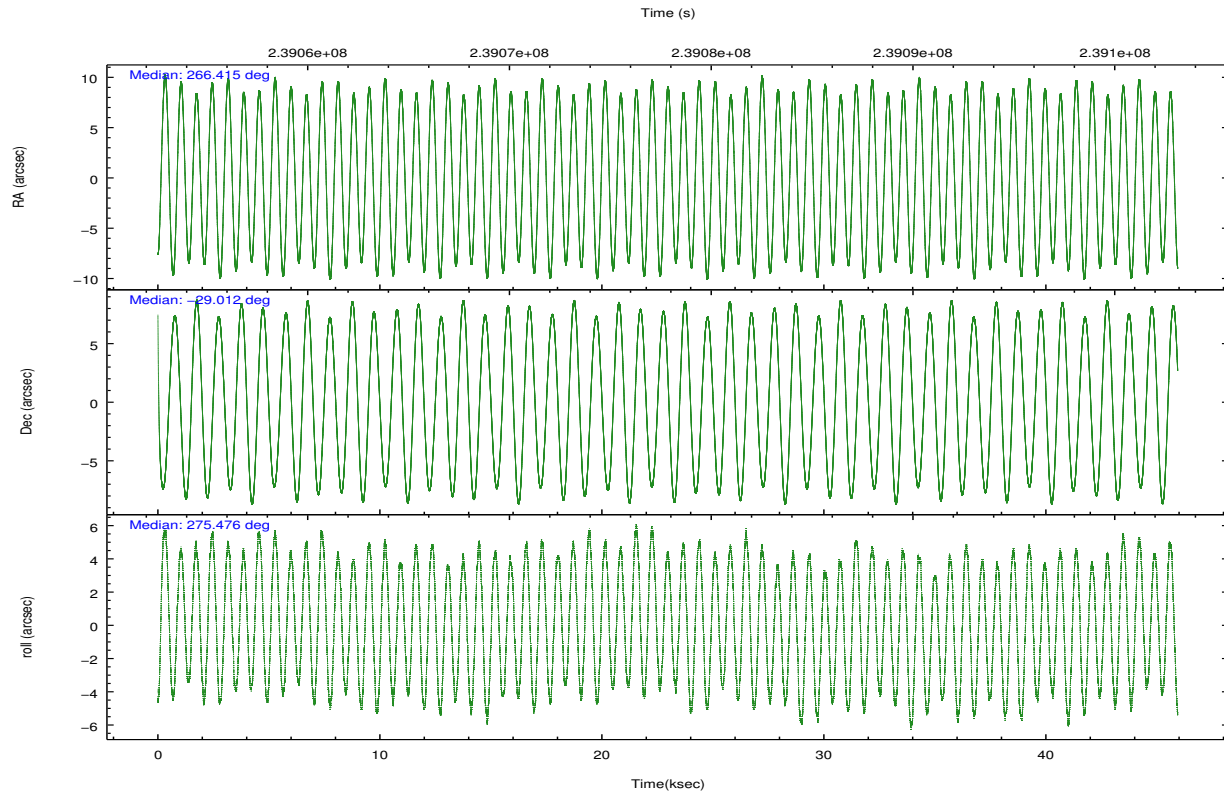
	ccd 0	ccd 1	ccd 2	ccd 3	ccd 6
grade 0 events	48793	65519	58645	86826	32153
	12%	14%	12%	16%	7%
grade 1 events	402	560	491	676	260
	0%	0%	0%	0%	0%
grade 2 events	19158	23887	20278	23809	15967
	4%	5%	4%	4%	3%
grade 3 events	6260	8201	6452	9101	5030
	1%	1%	1%	1%	1%
grade 4 events	6109	8121	7138	9086	5001
	1%	1%	1%	1%	1%
grade 5 events	14297	15810	13647	16731	16072
	3%	3%	2%	3%	3%
grade 6 events	13093	17497	12959	17210	12576
	3%	3%	2%	3%	2%
grade 7 events	296449	317486	363889	347990	355421
	73%	69%	75%	68%	80%

2.2 Compared Parameters

Parameter	Planned	Actual	Parameter	Planned	Actual
Instrument	ACIS	ACIS	Obspar format version number	7	7
Detector	ACIS-01236	ACIS-01236	Obspar file type	PREDICTED	ACTUAL
Grating	NONE	NONE	Obspar update status	NONE	UPDATED
Data mode	FAINT	FAINT	Number of optional ACIS chips dropped	0	0
Observation mode	POINTING	POINTING	On-chip summing requested	N	N
[deg] Pointing RA	266.396793	266.4150815248095	Subarray requested	NONE	NONE
[deg] Pointing Dec	-28.989968	-29.01221492385639	Alternating exposures requested	N	N
[deg] Pointing Roll	275.263346	275.4808994467522	[s] Primary exposure time	0.000000	3.1
[s] Window start time (MET)	239052424.184000	239052424.184000			
[s] Window stop time (MET)	239101444.184000	239101444.184000			
[mm] SIM focus pos	-0.782348	-0.7809083437167272			
[mm] SIM defocus	0	0.001439871863259334			
[mm] SIM translation stage pos	-233.592463	-233.5874344608287			
[mm] SIM translation stage offset	0	-0.005018542100998502			
[s] Observation start time (MET)	239055018.184000	239053871.37344			
Observation start date	2005-07-29T20:09:14	2005-07-29T19:51:11			
[s] Observation end time (MET)	239100818.184000	239101659.43813			
Observation end date	2005-07-30T08:52:34	2005-07-30T09:07:39			
Read mode	TIMED	TIMED			

2.3 Aspect





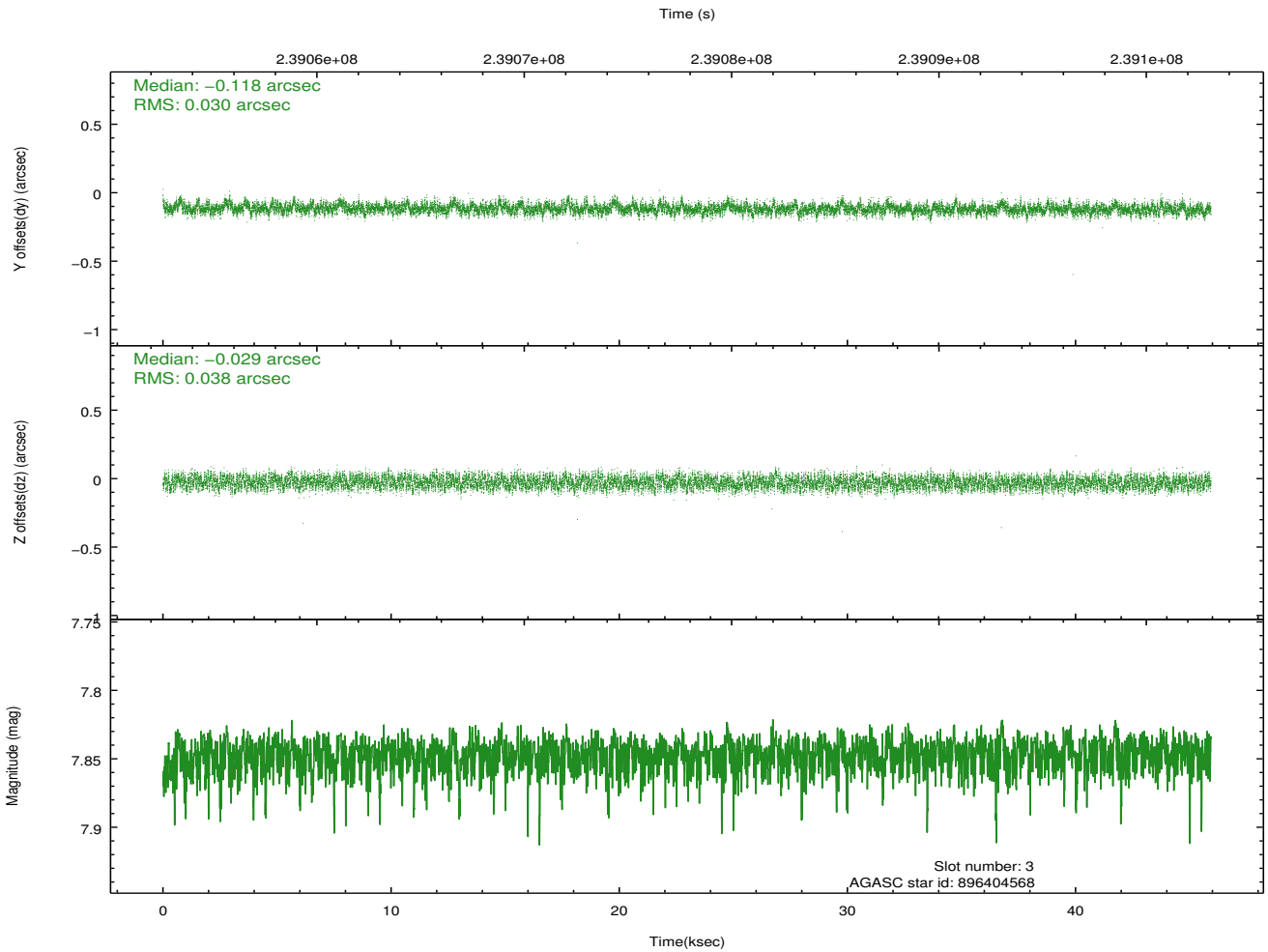
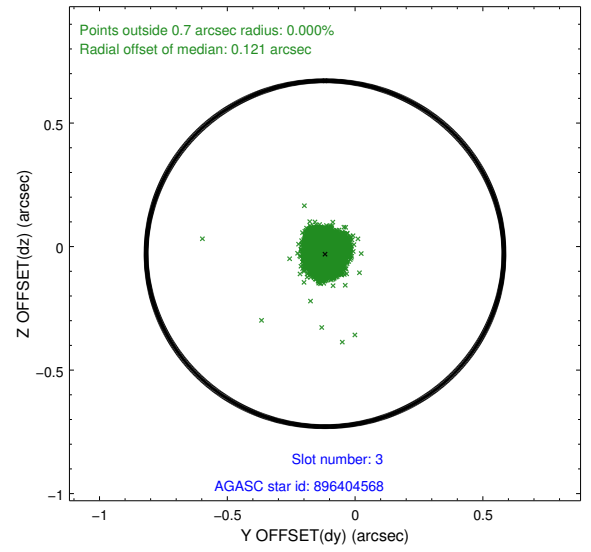
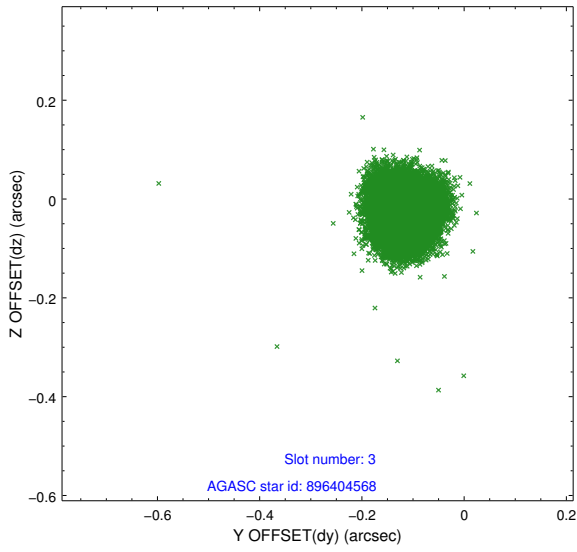
Slot Statistics

slot	status	used	id	mag	n_pts	med_dy	med_dz	dr1	dr2	ra	dec	mean_y	mean_z
0	FID		ACIS-I-1	7.24	11202	-0.020	0.042	0.015	0.064	0.000000	0.000000	933.12	-833.06
1	FID		ACIS-I-4	7.18	11203	0.122	0.005	0.021	0.048	0.000000	0.000000	2153.30	1066.71
2	FID		ACIS-I-5	7.23	11202	-0.198	0.024	0.016	0.032	0.000000	0.000000	-1815.06	1064.59
3	GUIDE	used	896404568	7.85	22405	-0.118	-0.029	0.053	0.082	265.687293	-28.431080	-2202.66	-2053.03
4	GUIDE	used	896533888	7.02	22409	0.040	-0.032	0.052	0.077	266.666434	-29.392757	1522.61	709.09
5	GUIDE	used	896540808	7.47	22408	0.070	0.049	0.043	0.069	265.985401	-29.308604	1026.54	-1391.28
6	GUIDE	used	896541360	7.72	22403	0.082	0.008	0.043	0.069	266.684478	-29.453744	1746.69	744.86
7	GUIDE	used	896541576	8.18	22402	-0.076	0.006	0.067	0.104	267.051055	-28.762912	-618.82	2130.47

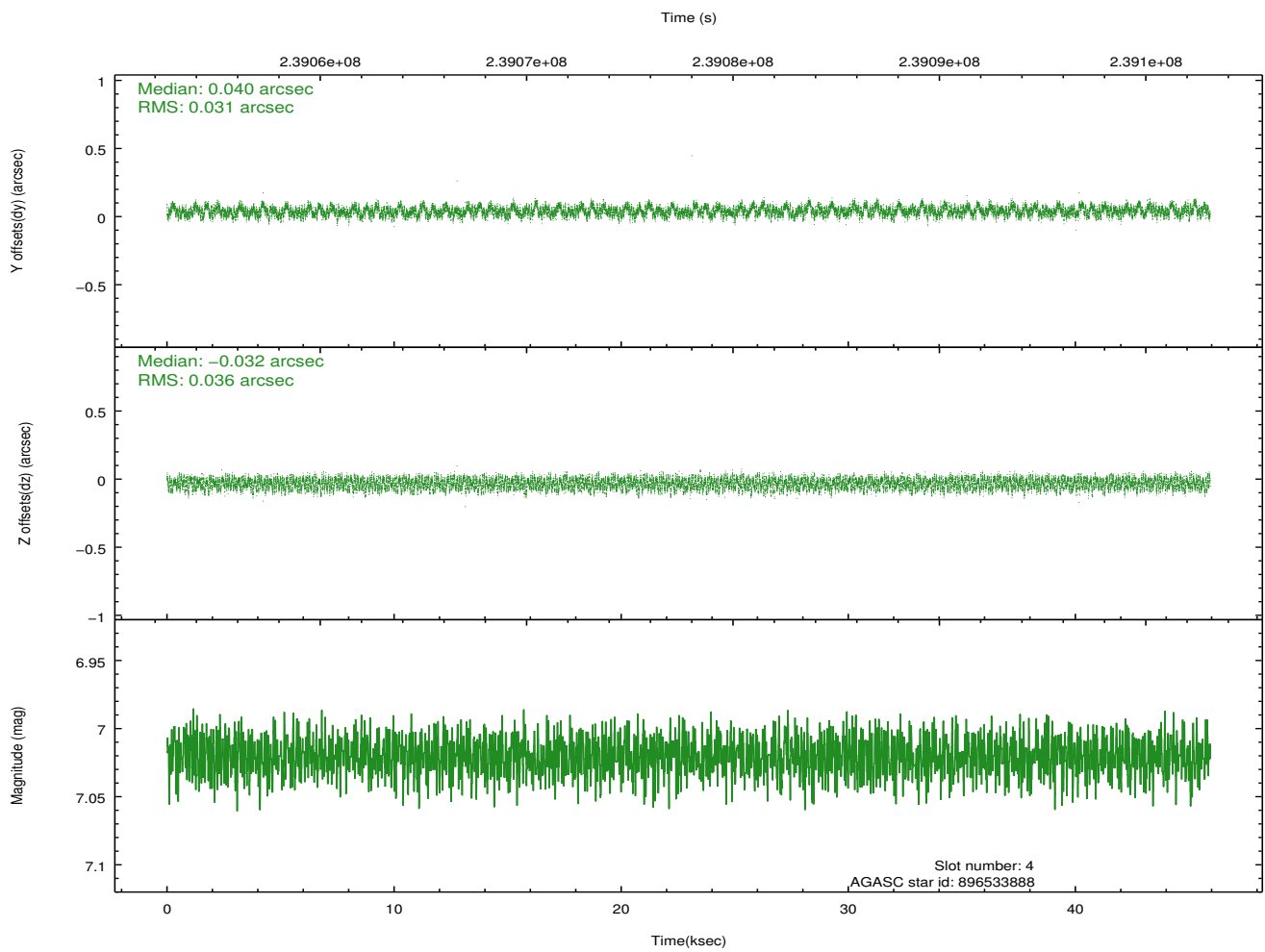
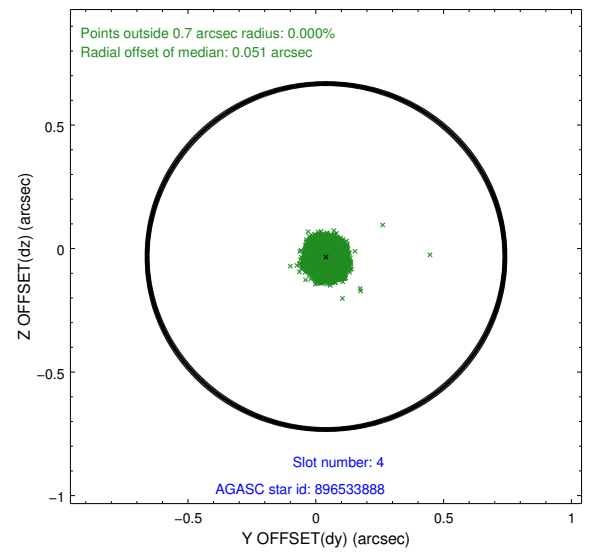
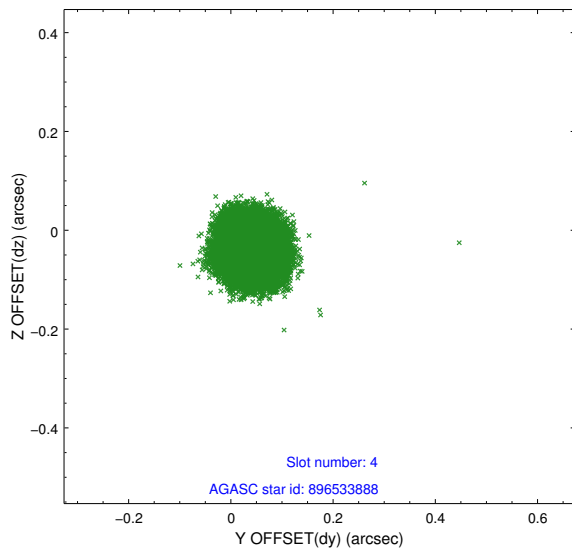
∞

2.4 Star Slots

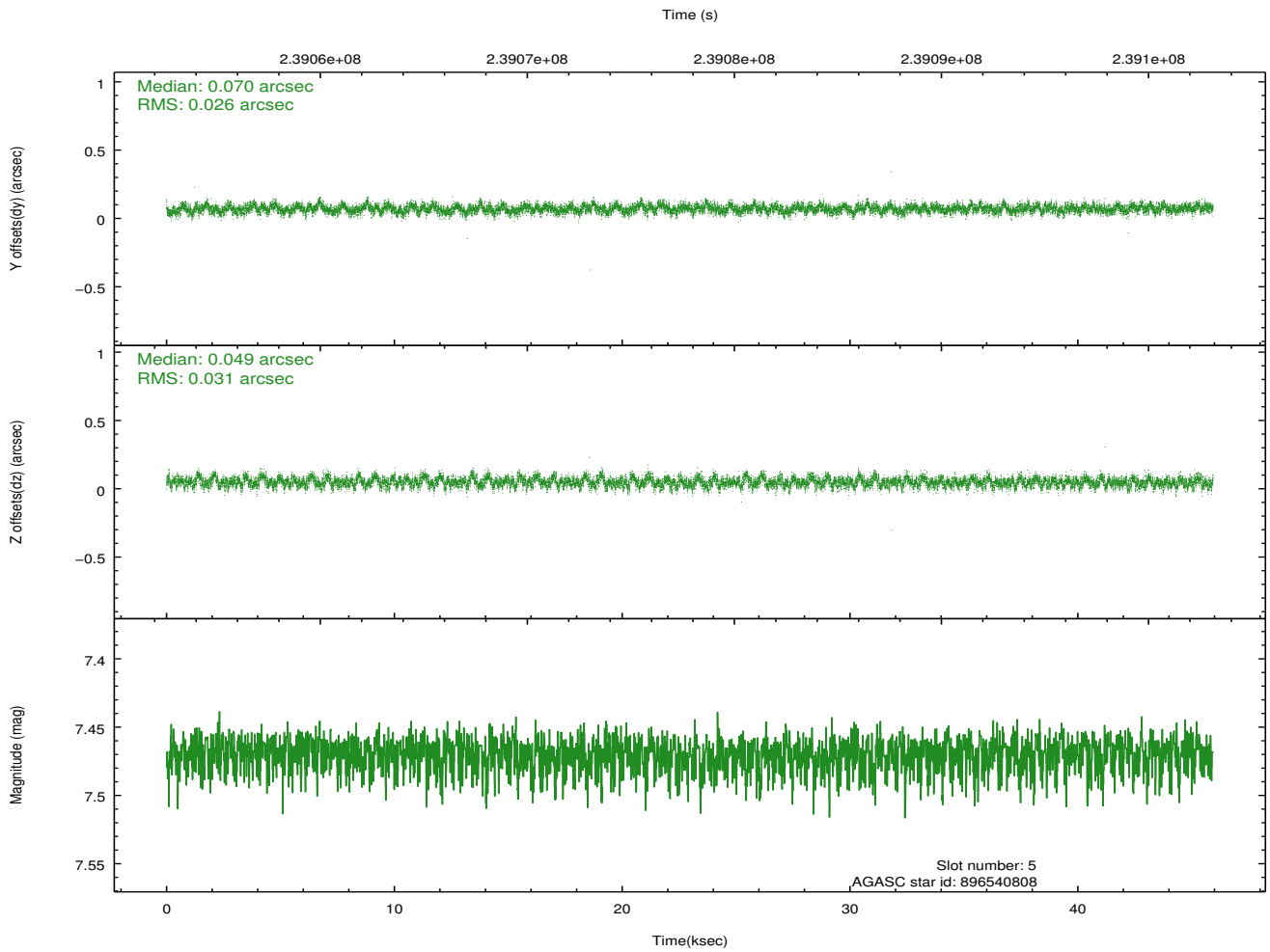
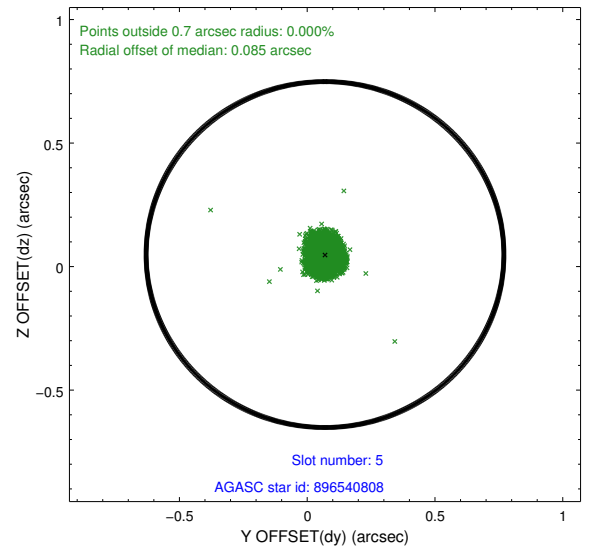
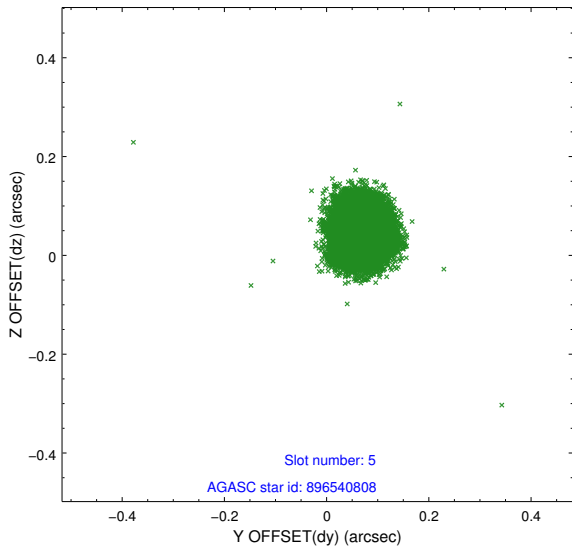
2.4.1 Slot 3



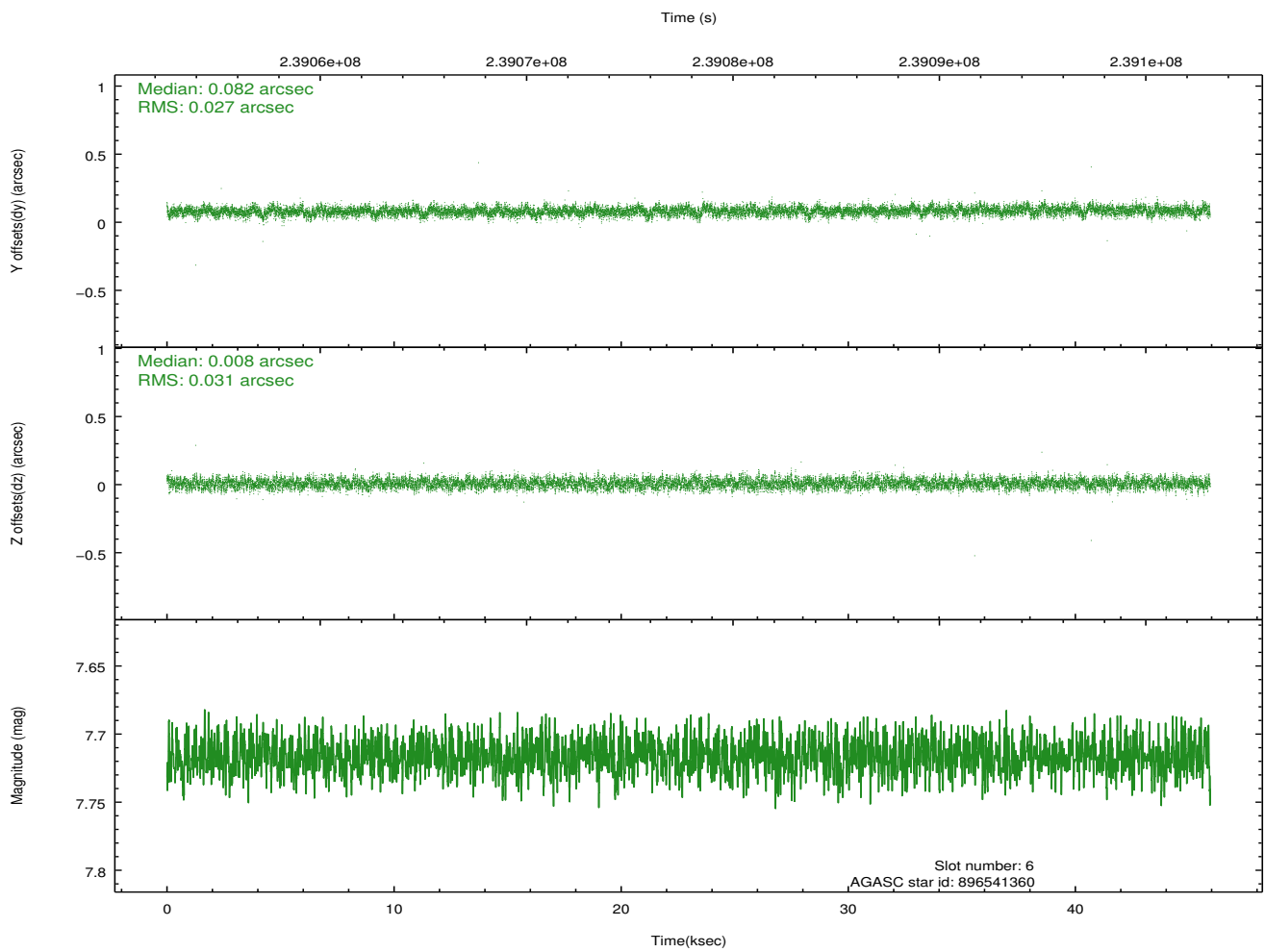
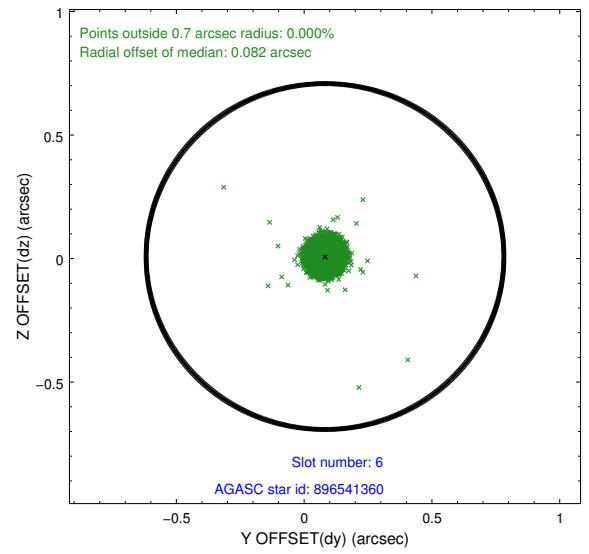
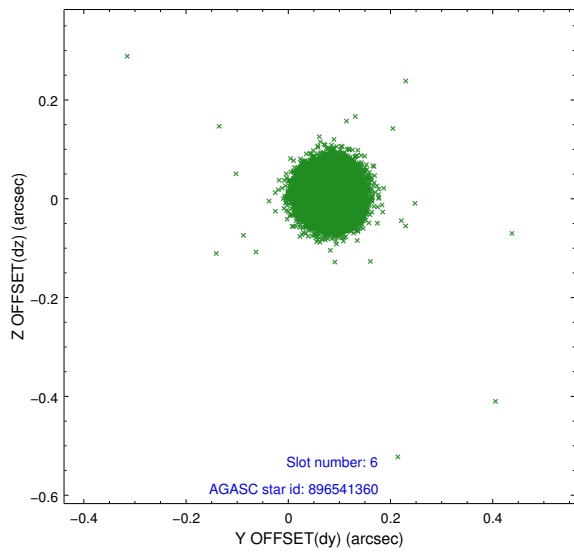
2.4.2 Slot 4



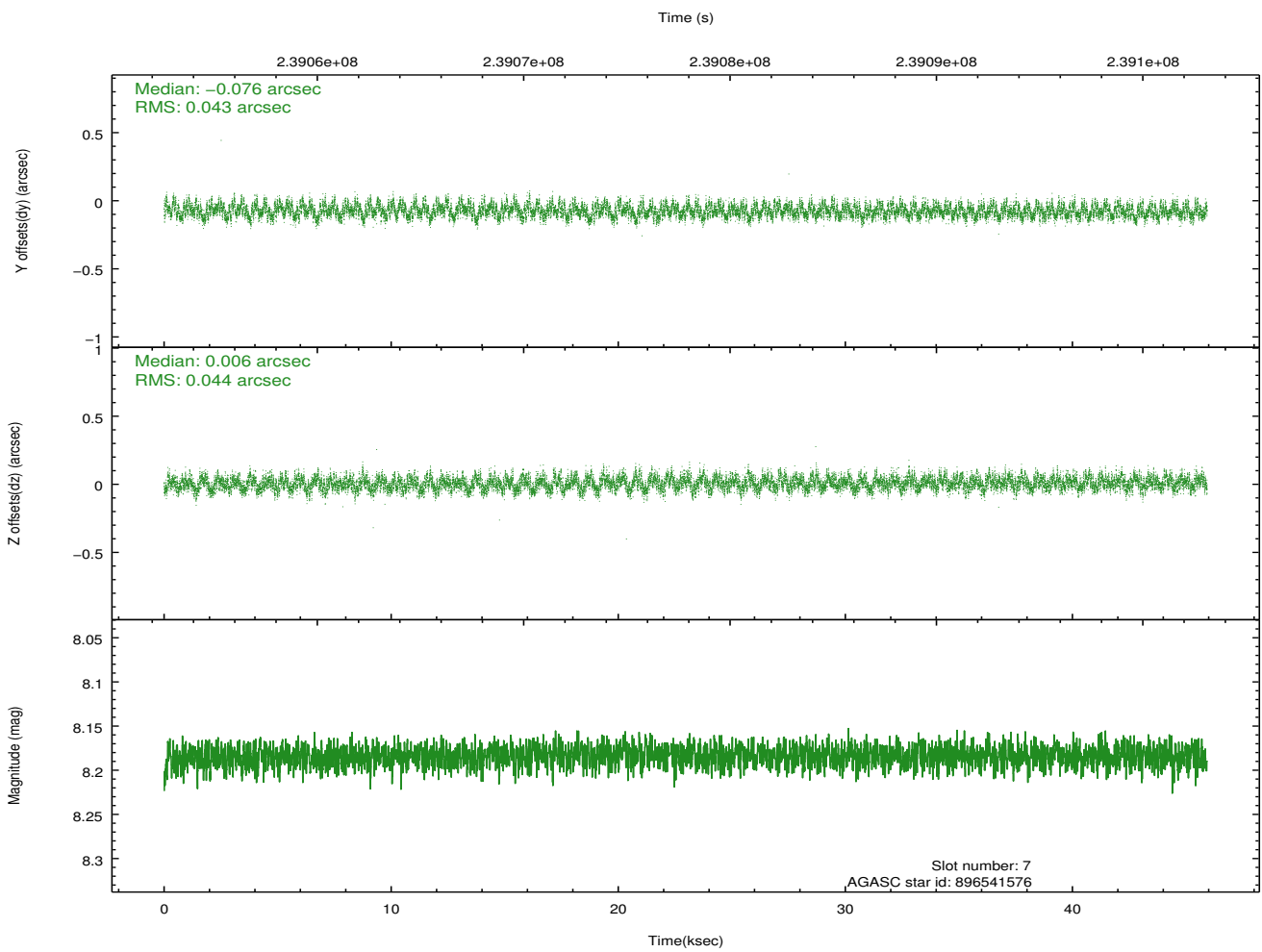
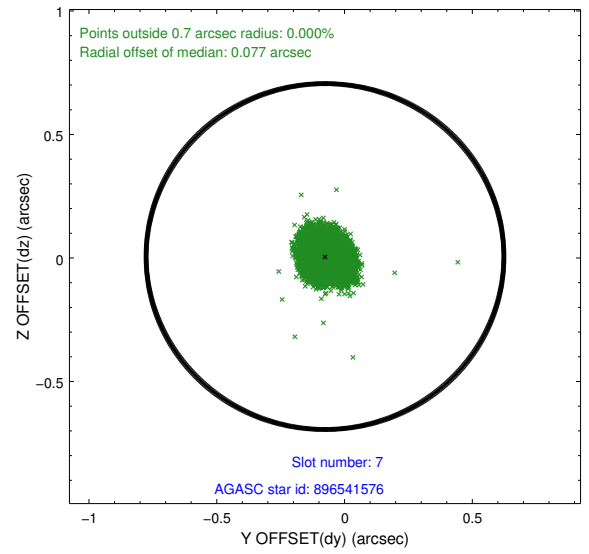
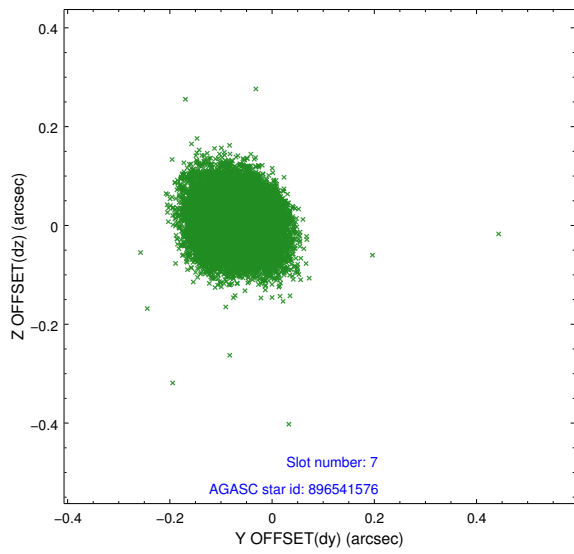
2.4.3 Slot 5



2.4.4 Slot 6

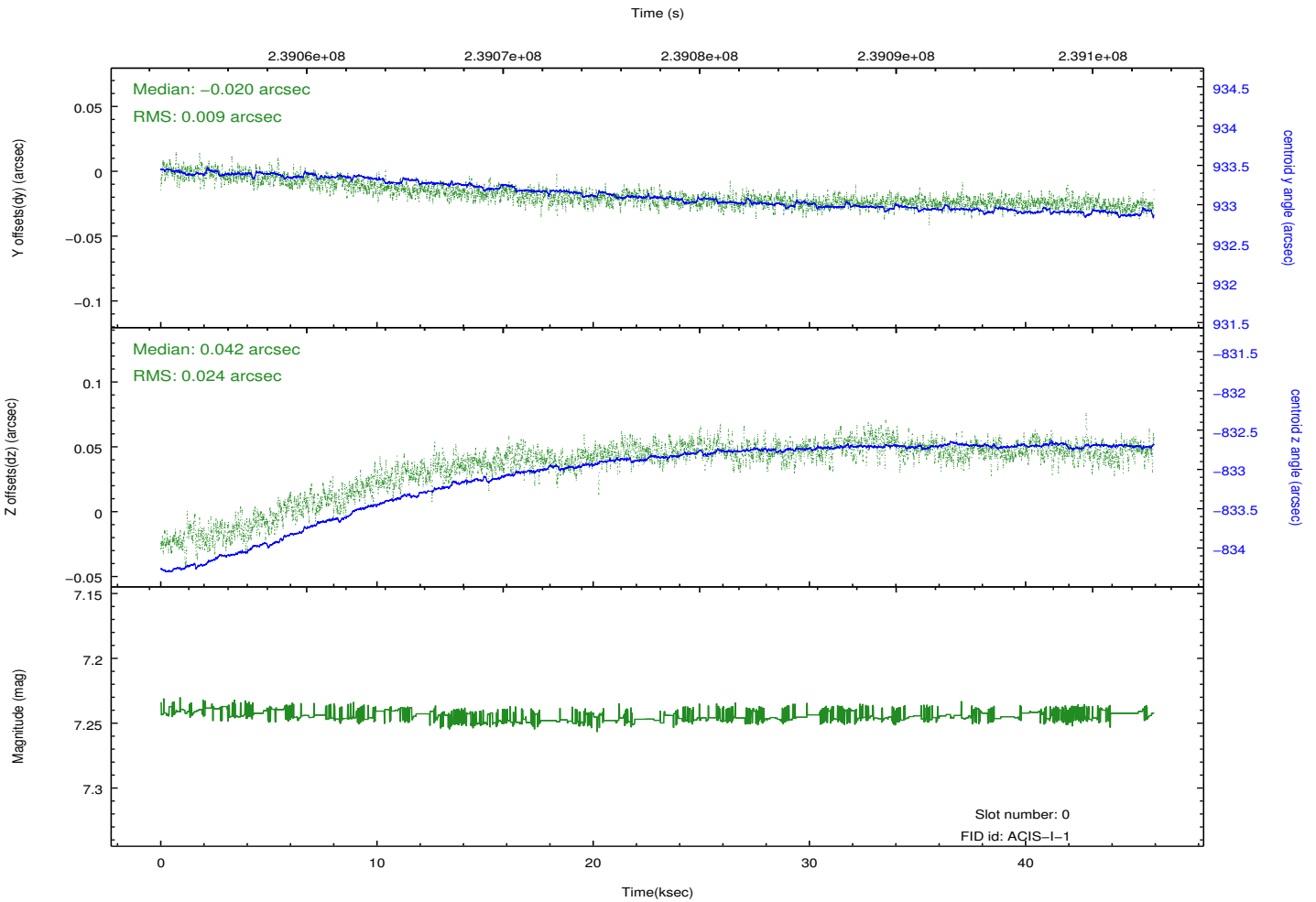
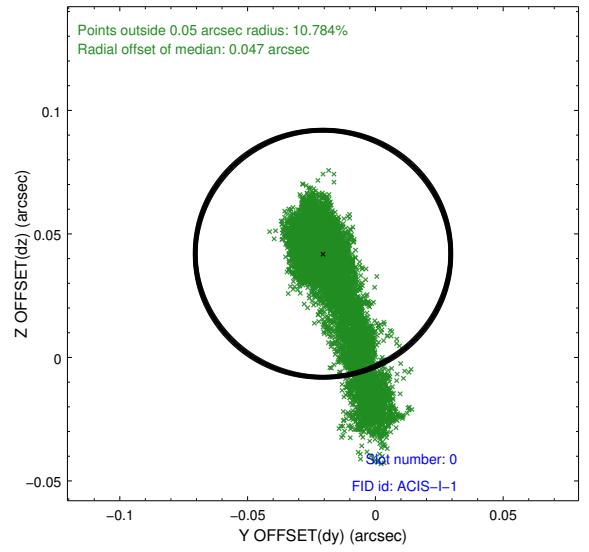
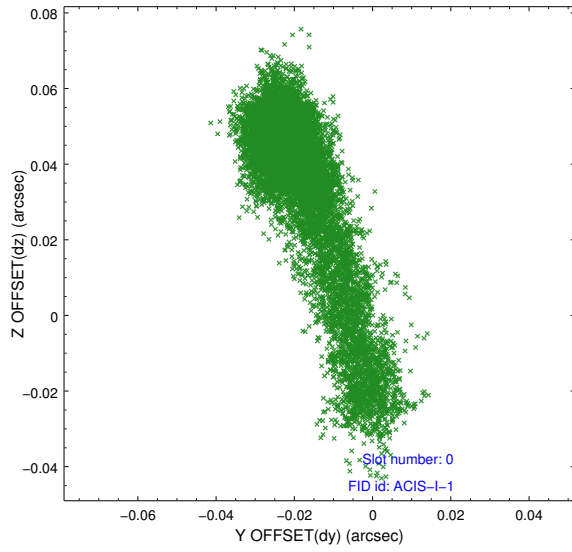


2.4.5 Slot 7

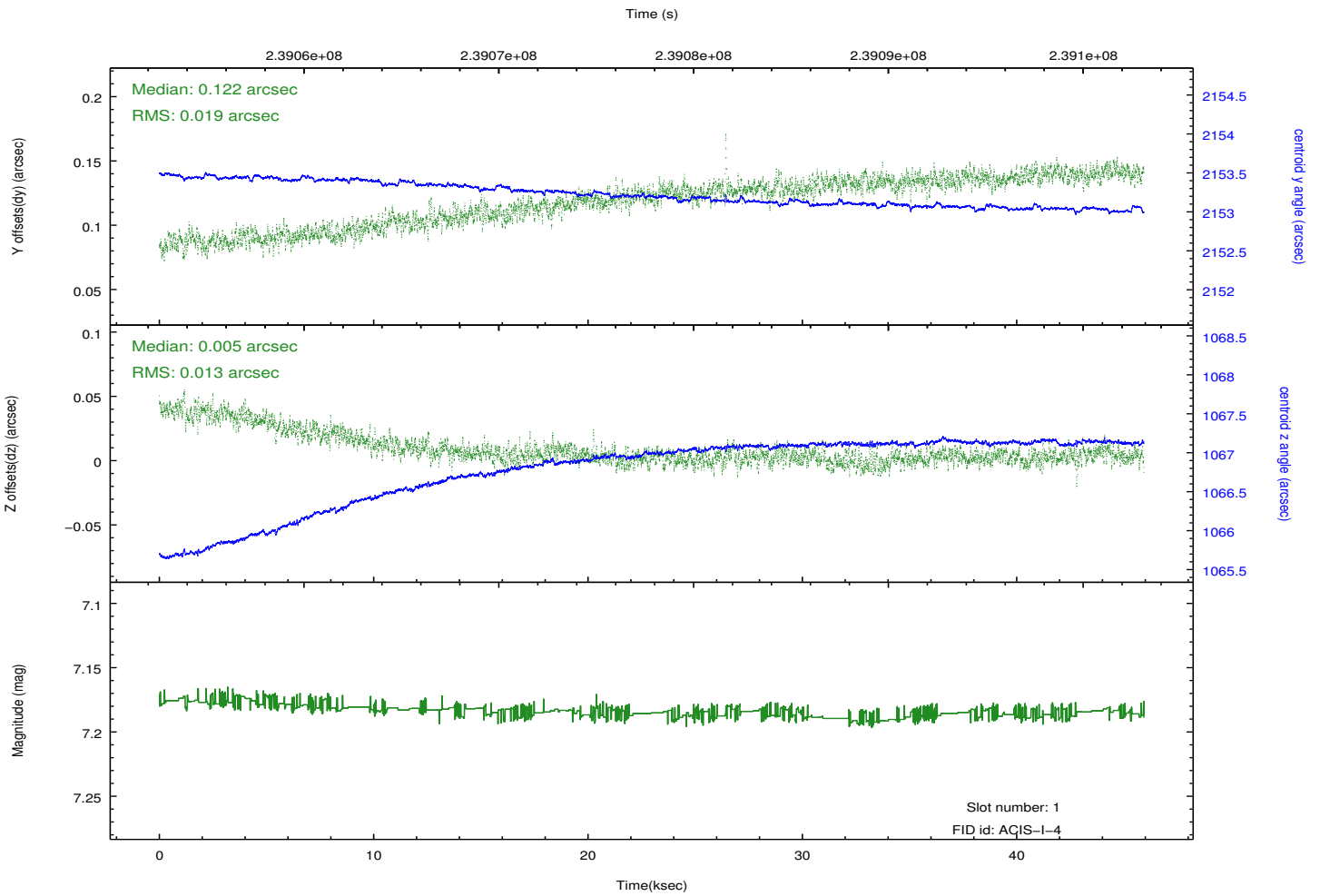
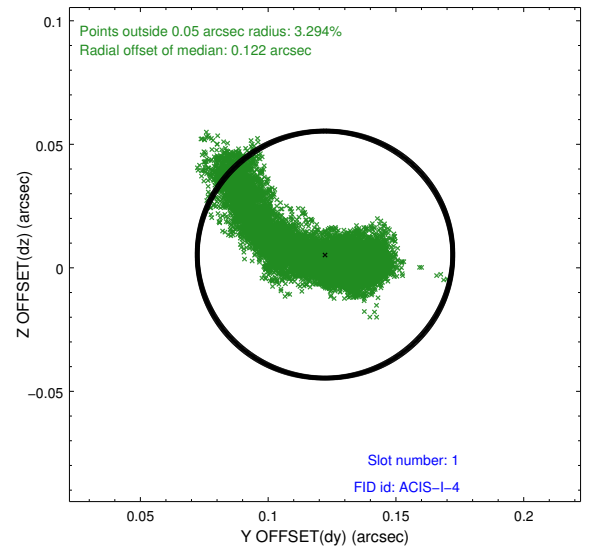
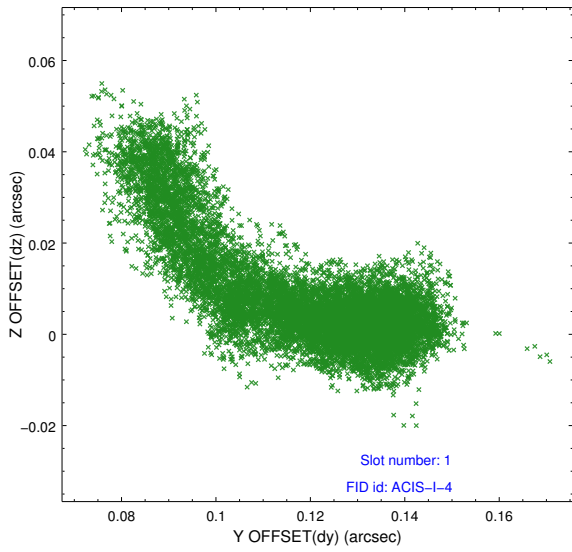


2.5 FID Slots

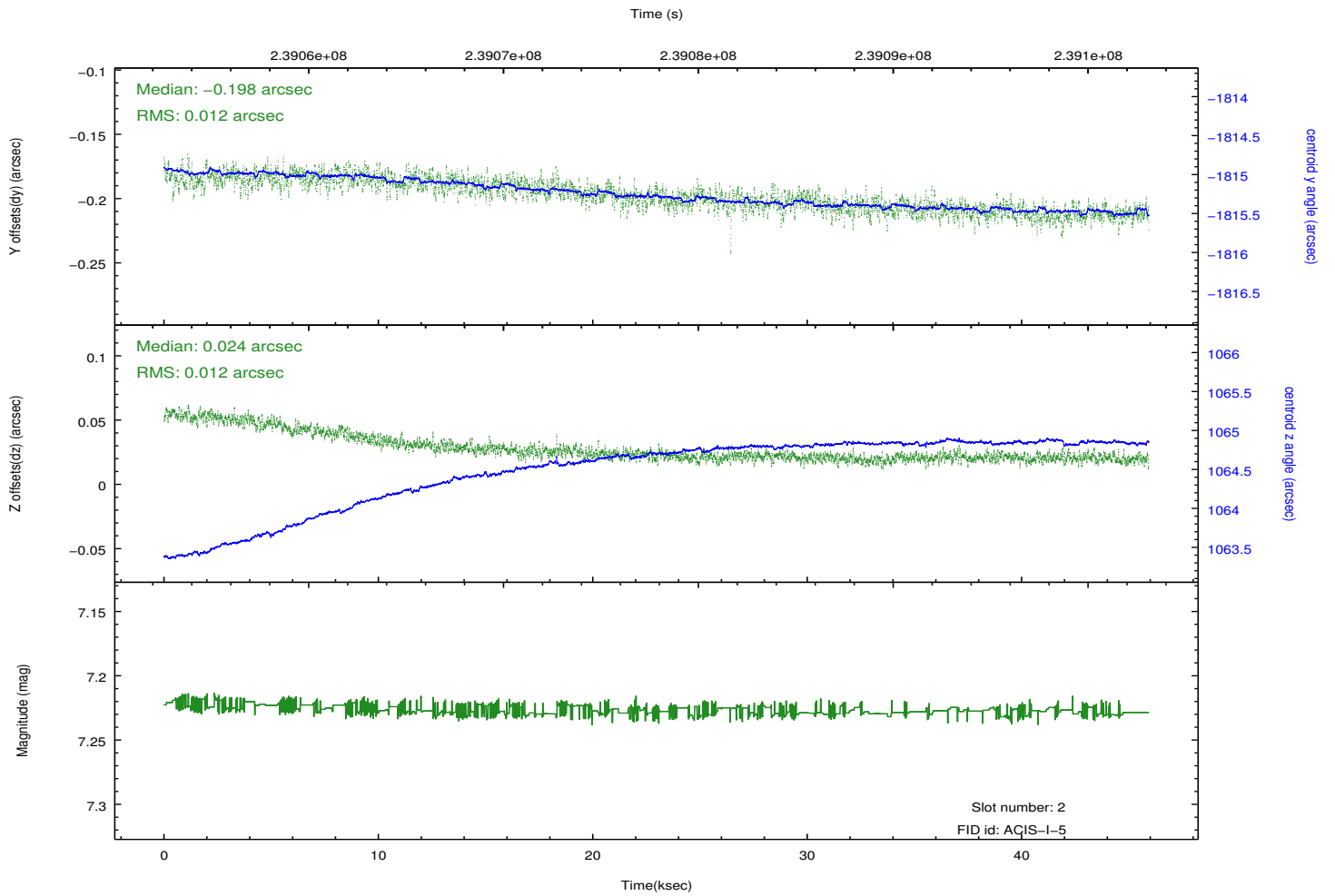
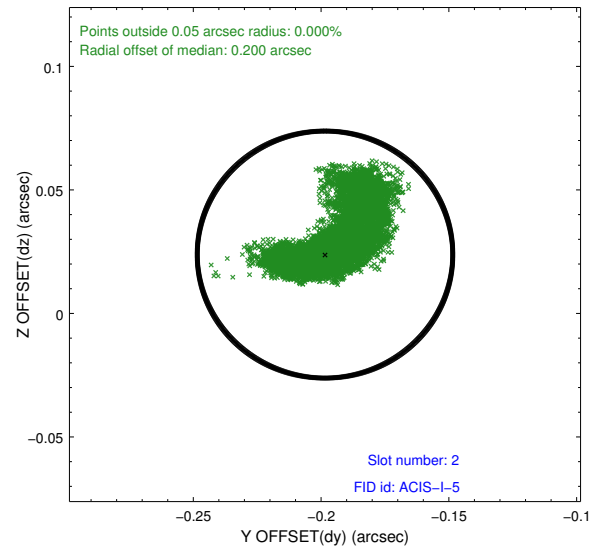
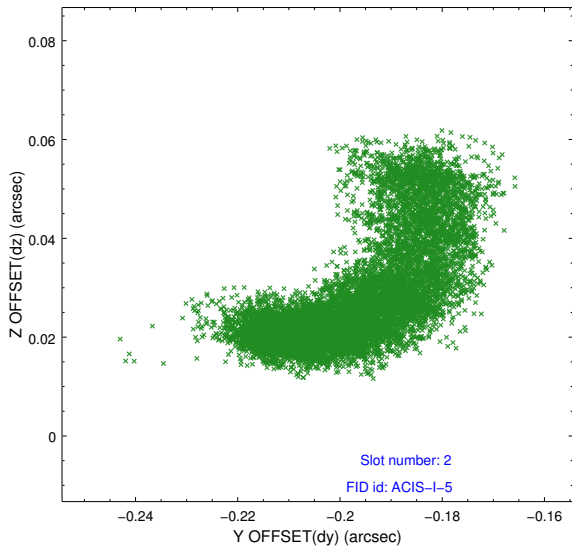
2.5.1 Slot 0



2.5.2 Slot 1



2.5.3 Slot 2



A Summary

A.1 Status

V&V Scientist	Beth Sundheim
V&V Date (YYYY-MM-DD)	2015.07.23
V&V Edition	1
V&V Disposition and Status	OK
V&V Charge Time	46.28594

A.2 Comments

Window preference met.

Charge time for this observation remains at previous value of 46.28594 ksec, although with the current processing the charge time would have been 45.92614 ksec.

Because an aspect solution is determined in a finite time interval, a small number of events registered within the delta time before the first aspect solution do not have proper sky coordinates. We apply a manual workaround to exclude those events with incorrect sky positions until the complete s/w resolution is obtained.