

V&V Reference Report

L2 ASCDS Version : 7.6.9

Observation 60892 - L2 Version 001
Chandra X-Ray Center

L2 Processing Date : Oct 18 2006

Contents

1	Front	2
2	OBI	3
2.1	OBI	3
2.1.1	Images	3
2.1.2	Bias	3
2.1.3	Parameters	4
2.1.4	Events	4
2.2	Compared Parameters	5
2.3	Aspect	6
2.4	Star Slots	8
2.5	FID Slots	8
A	Summary	9
A.1	Status	9
A.2	Comments	9

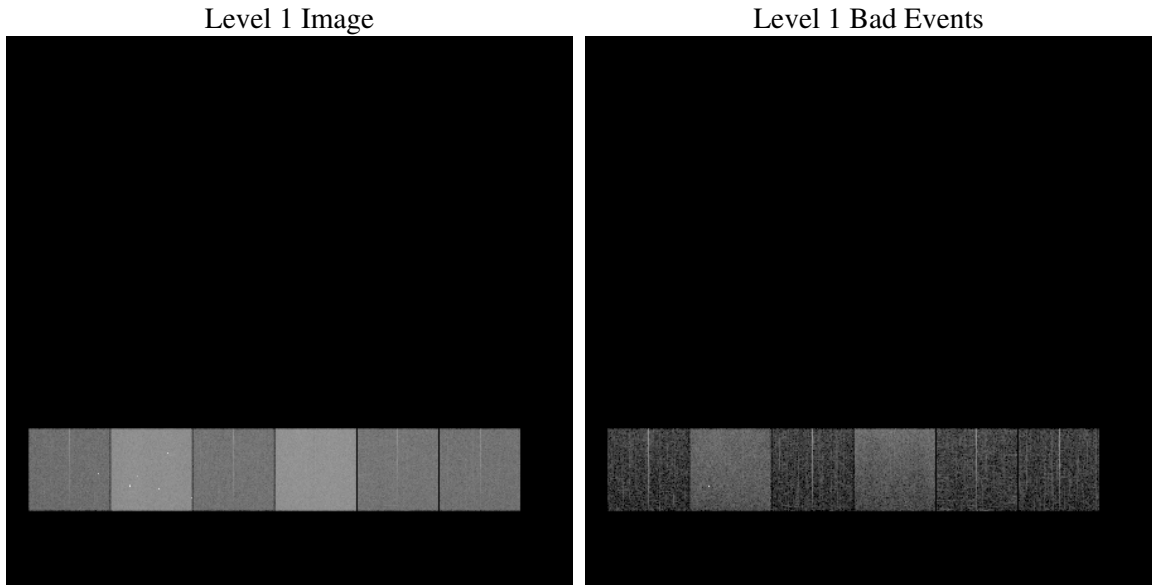
1 Front

seq_num	
obs_id	60892
title	ACIS-456789 diagnostics
observer	CHANDRA engineering request/realtime commanding
object	
dtcycle	0
cycle	P
ra_targ	0.0
dec_targ	0.0
ra_nom	92.188581160737
dec_nom	38.87281191396
roll_nom	218.96596341215
revision	2
ontime	8461.0949747264
livetime	8353.9554954967
ontime4	3298.3315608203
ontime5	8463.9999684691
ontime6	3577.0175793171
ontime7	8461.0949747264
ontime8	3697.0173621178
ontime9	3544.4843578041
l2events	1256712

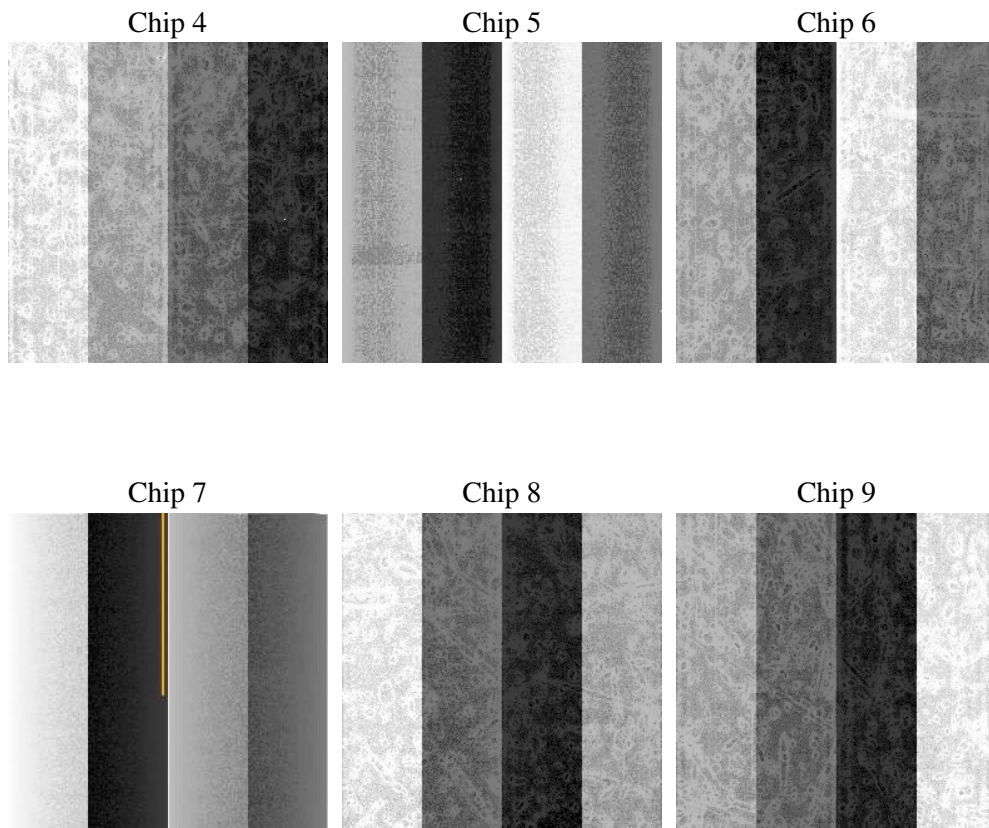
2 OBI

2.1 OBI

2.1.1 Images



2.1.2 Bias



2.1.3 Parameters

obi_num	0
ascdsver	7.6.9
caldbver	3.2.3
date	2006-10-19T01:26:42
revision	2

sched_exp_time	0.0
ontime	8462.2605435848
ontime4	3299.3740096688
ontime5	8465.5015337467
ontime6	3578.1010681689
ontime7	8462.2605435848
ontime8	3698.0187709928
ontime9	3545.6909666657
l1events	1544291

2.1.4 Events

	ccd 4	ccd 5	ccd 6	ccd 7	ccd 8	ccd 9
level 1 events	162459	393702	186309	427190	196022	178609
rejected events	24550	66322	25164	58285	28321	25339
rejected %	15%	16%	13%	13%	14%	14%

	ccd 4	ccd 5	ccd 6	ccd 7	ccd 8	ccd 9
grade 0 events	79931	40088	87984	67192	92383	84754
	49%	10%	47%	15%	47%	47%
grade 1 events	546	128	428	171	480	456
	0%	0%	0%	0%	0%	0%
grade 2 events	21992	155932	27991	111096	29473	26296
	13%	39%	15%	26%	15%	14%
grade 3 events	9128	10771	9924	27724	10736	9814
	5%	2%	5%	6%	5%	5%
grade 4 events	9129	10541	9956	27186	10712	9804
	5%	2%	5%	6%	5%	5%
grade 5 events	1635	7332	1799	7560	2172	1841
	1%	1%	0%	1%	1%	1%
grade 6 events	17729	110048	25290	135707	24397	22602
	10%	27%	13%	31%	12%	12%
grade 7 events	22369	58862	22937	50554	25669	23042
	13%	14%	12%	11%	13%	12%

2.2 Compared Parameters

Parameter	Planned	Actual	Parameter	Planned	Actual
Instrument	ACIS	ACIS	Obspar format version number	6	6
Detector	ACIS-456789	ACIS-456789	Obspar file type	PREDICTED	ACTUAL
Grating	NONE	NONE	Obspar update status	NONE	UPDATED
Data mode	FAINT	FAINT	On-chip summing requested	N	N
Observation mode	SECONDARY	SECONDARY	Subarray requested	NONE	NONE
Pointing RA	0	92.18858116073706	Alternating exposures requested	N	N
Pointing Dec	0	38.87281191395972	Primary exposure time	0.000000	3.2
Pointing Roll	0.0	218.9659634121476			
SIM focus pos (mm)	-0.684267	-0.7809083437167272			
SIM defocus (mm)	0	0.7524282956875696			
SIM translation stage pos (mm)	-190.132523	250.466033080201			
SIM translation stage offset (mm)	0	-0.01005468664627074			
Observation start time	158121827.106855	158121826.08214			
Observation start date	2003-01-05T02:43:47	2003-01-05T02:43:46			
Observation end time	158144131.107787	158144130.08307			
Observation end date	2003-01-05T08:55:31	2003-01-05T08:55:30			
Read mode	TIMED	TIMED			

2.3 Aspect

2.4 Star Slots

2.5 FID Slots

A Summary

A.1 Status

V&V Scientist	Jen Lauer
V&V Date (YYYY-MM-DD)	2006.10.19
V&V Edition	1
V&V Disposition and Status	OK
V&V Charge Time	8.46109497

A.2 Comments