

# V&V Reference Report

## L2 ASCDS Version : 8.4.5

Observation 61222 - L2 Version 3  
Chandra X-Ray Center

L2 Processing Date : Oct 5 2012

## Contents

<b>1</b>	<b>Front</b>	<b>2</b>
<b>2</b>	<b>OBI</b>	<b>3</b>
2.1	OBI . . . . .	3
2.1.1	Images . . . . .	3
2.1.2	Bias . . . . .	3
2.1.3	Parameters . . . . .	4
2.1.4	Events . . . . .	4
2.2	Compared Parameters . . . . .	5
2.3	Star Slots . . . . .	6
2.4	FID Slots . . . . .	6
<b>A</b>	<b>Summary</b>	<b>7</b>
A.1	Status . . . . .	7
A.2	Comments . . . . .	7

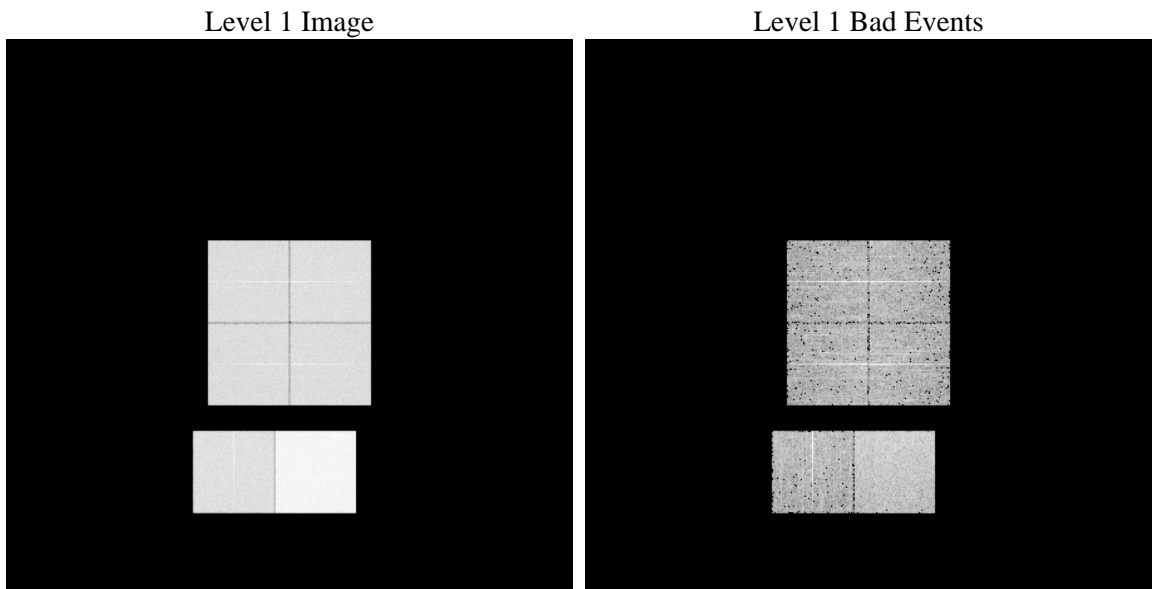
# 1 Front

seq_num	&#160	Sequence number
obs_id	61222	Observation id
title	ACIS-012367 diagnostics	Proposal title
observer	CHANDRA engineering request/realtime commanding	Principal investig
object	&#160	Source name
dtycycle	0	&#160
cycle	P	events from which exps? Prim/Second/Both
ra_targ	0.0	Observer's specified target RA [deg]
dec_targ	0.0	Observer's specified target Dec [deg]
ra_nom	235.50502791539	Nominal RA [deg]
dec_nom	-34.471675081548	Nominal Dec [deg]
roll_nom	48.844887797199	Nominal Roll [deg]
revision	3	Processing version of data
ontime	8463.9999684691	Sum of GTIs [s]
livetime	8356.8237044595	Livetime [s]
ontime0	3645.0079815686	Sum of GTIs [s]
ontime1	3735.7972050607	Sum of GTIs [s]
ontime2	3496.0030392408	Sum of GTIs [s]
ontime3	3544.4541798234	Sum of GTIs [s]
ontime6	3784.0299026966	Sum of GTIs [s]
ontime7	8463.9999684691	Sum of GTIs [s]
l2events	1333313	Number of level 2 events

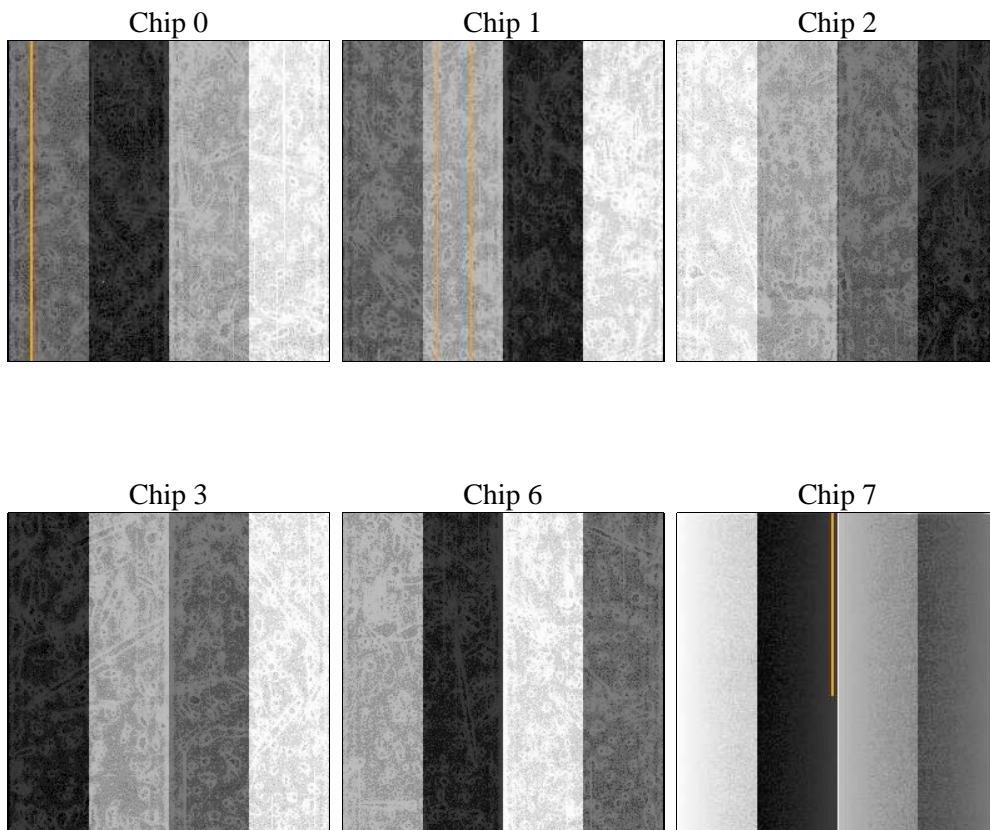
## 2 OBI

### 2.1 OBI

#### 2.1.1 Images



#### 2.1.2 Bias



### 2.1.3 Parameters

obi_num	1	Obi number	sched_exp_time	0.0	[s] Scheduled observation exposure time
ascdsver	8.4.5	Processing system revision	ontime	8463.9999684691	Sum of GTIs [s]
caldbver	4.5.2	&#160	ontime0	3645.0079815686	Sum of GTIs [s]
date	2012-10-05T21:05:08	Date and time of file creation	ontime1	3735.7972050607	Sum of GTIs [s]
revision	3	Processing version of data	ontime2	3496.0030392408	Sum of GTIs [s]
			ontime3	3544.4541798234	Sum of GTIs [s]
			ontime6	3784.0299026966	Sum of GTIs [s]
			ontime7	8463.9999684691	Sum of GTIs [s]
			l1events	1561191	Number of level 1 events

### 2.1.4 Events

	ccd 0	ccd 1	ccd 2	ccd 3	ccd 6	ccd 7		ccd 0	ccd 1	ccd 2	ccd 3	ccd 6	ccd 7
level 1 events	209368	215468	205517	208300	230792	491746	grade 0 events	101860	105085	99968	102403	110711	113474
rejected events	24215	24566	25385	25515	27313	43112		48%	48%	48%	49%	47%	23%
rejected %	11%	11%	12%	12%	11%	8%	grade 1 events	511	512	490	517	542	312
								0%	0%	0%	0%	0%	0%
							grade 2 events	32963	33566	31739	31691	35429	99020
								15%	15%	15%	15%	15%	20%
							grade 3 events	11571	12192	11164	11578	12501	45511
								5%	5%	5%	5%	5%	9%
							grade 4 events	11752	12164	11273	11528	12524	45160
								5%	5%	5%	5%	5%	9%
							grade 5 events	1704	1789	1662	1835	1920	8848
								0%	0%	0%	0%	0%	1%
							grade 6 events	27007	27895	25988	25585	32314	145469
								12%	12%	12%	12%	14%	29%
							grade 7 events	22000	22265	23233	23163	24851	33952
								10%	10%	11%	11%	10%	6%

## 2.2 Compared Parameters

Parameter	Planned	Actual	Parameter	Planned	Actual
Instrument	ACIS	ACIS	Obspar format version number	7	7
Detector	ACIS-012367	ACIS-012367	Obspar file type	PREDICTED	ACTUAL
Grating	NONE	NONE	Obspar update status	NONE	UPDATED
Data mode	FAINT	FAINT	On-chip summing requested	N	N
Observation mode	SECONDARY	SECONDARY	Subarray requested	NONE	NONE
[deg] Pointing RA	0	235.5050279153874	Alternating exposures requested	N	N
[deg] Pointing Dec	0	-34.47167508154801	[s] Primary exposure time	0.000000	3.2
[deg] Pointing Roll	0.0	48.84488779719944			
[mm] SIM focus pos	-0.782348	-0.6828225247311905			
[mm] SIM defocus	0	0.8505141146731063			
[mm] SIM translation stage pos	-233.592463	250.466033080201			
[mm] SIM translation stage offset	0	-0.01005468664627074			
[s] Observation start time (MET)	136190795.002	136190793.97703			
Observation start date	2002-04-26T06:46:35	2002-04-26T06:46:33			
[s] Observation end time (MET)	136212104.753	136212103.7279			
Observation end date	2002-04-26T12:41:45	2002-04-26T12:41:43			
Read mode	TIMED	TIMED			

**2.3 Star Slots**

**2.4 FID Slots**

# A Summary

## A.1 Status

V&V Scientist	Beth Sundheim
V&V Date (YYYY-MM-DD)	2012.10.11
V&V Edition	1
V&V Disposition and Status	OK
V&V Charge Time	8.4639999684691

## A.2 Comments