

V&V Reference Report

L2 ASCDS Version : 7.6.8.1

Observation 61232 - L2 Version 001
Chandra X-Ray Center

L2 Processing Date : Sep 11 2006

Contents

1	Front	2
2	OBI	3
2.1	OBI	3
2.1.1	Images	3
2.1.2	Bias	3
2.1.3	Parameters	4
2.1.4	Events	4
2.2	Compared Parameters	5
2.3	Aspect	6
2.4	Star Slots	8
2.5	FID Slots	8
A	Summary	9
A.1	Status	9
A.2	Comments	9

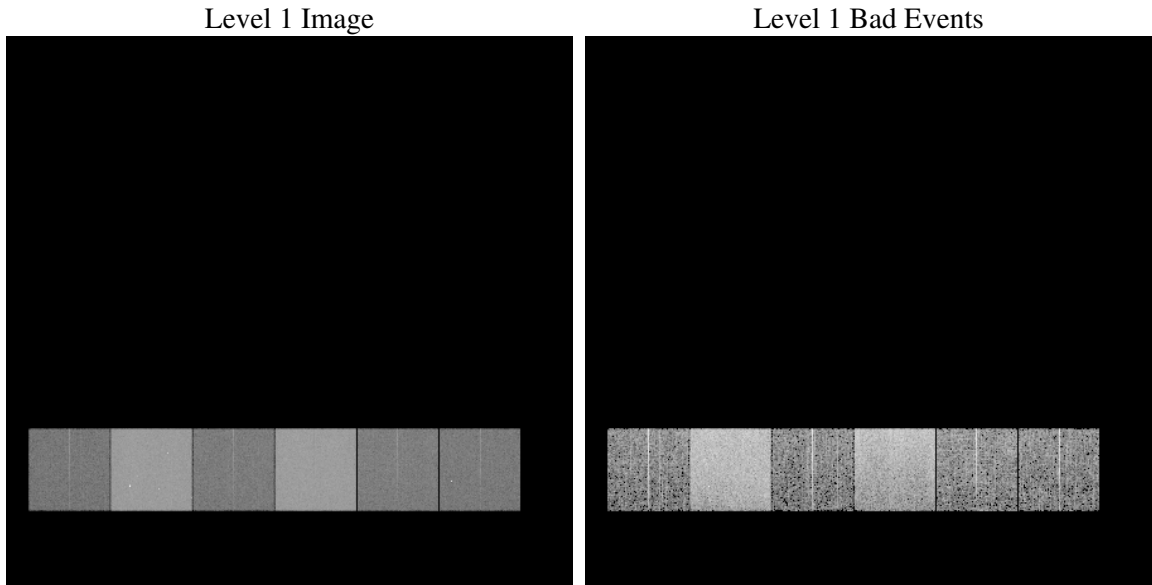
1 Front

seq_num	
obs_id	61232
title	ACIS-456789 diagnostics
observer	CHANDRA engineering request/realtime commanding
object	
dtcycle	0
cycle	P
ra_targ	0.0
dec_targ	0.0
ra_nom	346.8113508471
dec_nom	58.227986855799
roll_nom	45.112989991586
revision	2
ontime	6870.1895575225
livetime	6783.1950806137
ontime4	2501.4655387998
ontime5	7366.0970783532
ontime6	2699.1274797618
ontime7	6870.1895575225
ontime8	2799.6814105809
ontime9	2679.5578707159
l2events	1202944

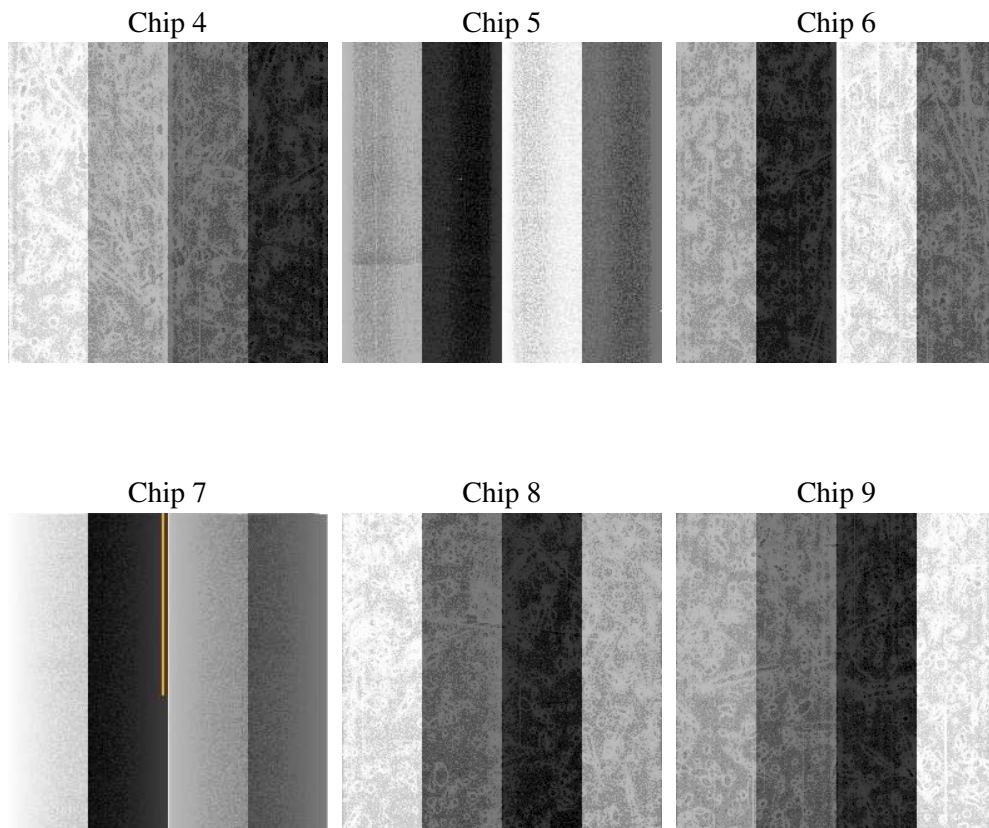
2 OBI

2.1 OBI

2.1.1 Images



2.1.2 Bias



2.1.3 Parameters

obi_num	0
ascdsver	7.6.8.1
caldbver	3.2.3
date	2006-09-11T11:21:55
revision	2

sched_exp_time	0.0
ontime	6870.9275904298
ontime4	2502.0804516971
ontime5	7366.7940712571
ontime6	2699.7834326625
ontime7	6870.9275904298
ontime8	2800.2552835047
ontime9	2680.3369436264
l1events	1448253

2.1.4 Events

	ccd 4	ccd 5	ccd 6	ccd 7	ccd 8	ccd 9
level 1 events	145364	398247	165532	404937	174736	159437
rejected events	20355	59407	20050	48592	23225	20109
rejected %	14%	14%	12%	11%	13%	12%

	ccd 4	ccd 5	ccd 6	ccd 7	ccd 8	ccd 9
grade 0 events	70588	44214	79205	65805	83188	76622
	48%	11%	47%	16%	47%	48%
grade 1 events	384	200	390	178	416	370
	0%	0%	0%	0%	0%	0%
grade 2 events	22277	160309	25322	107270	26863	24580
	15%	40%	15%	26%	15%	15%
grade 3 events	7634	12144	9044	27262	9636	8568
	5%	3%	5%	6%	5%	5%
grade 4 events	7603	11964	9040	26300	9596	8609
	5%	3%	5%	6%	5%	5%
grade 5 events	1326	6725	1486	6646	1684	1581
	0%	1%	0%	1%	0%	0%
grade 6 events	16907	110209	22871	129708	22228	20949
	11%	27%	13%	32%	12%	13%
grade 7 events	18645	52482	18174	41768	21125	18158
	12%	13%	10%	10%	12%	11%

2.2 Compared Parameters

Parameter	Planned	Actual	Parameter	Planned	Actual
Instrument	ACIS	ACIS	Obspar format version number	6	6
Detector	ACIS-456789	ACIS-456789	Obspar file type	PREDICTED	ACTUAL
Grating	NONE	NONE	Obspar update status	NONE	UPDATED
Data mode	FAINT	FAINT	On-chip summing requested	N	N
Observation mode	SECONDARY	SECONDARY	Subarray requested	NONE	NONE
Pointing RA	0	346.8113508470965	Alternating exposures requested	N	N
Pointing Dec	0	58.22798685579902	Primary exposure time	0.000000	3.2
Pointing Roll	0.0	45.11298999158629			
SIM focus pos (mm)	-0.684267	-0.6828225247311905			
SIM defocus (mm)	0	0.8505141146731063			
SIM translation stage pos (mm)	-190.132523	250.466033080201			
SIM translation stage offset (mm)	0	-0.01005468664627074			
Observation start time	135238533.063	135238532.03829			
Observation start date	2002-04-15T06:15:33	2002-04-15T06:15:32			
Observation end time	135276872.165	135276871.13985			
Observation end date	2002-04-15T16:54:32	2002-04-15T16:54:31			
Read mode	TIMED	TIMED			

2.3 Aspect

2.4 Star Slots

2.5 FID Slots

A Summary

A.1 Status

V&V Scientist	Jen Lauer
V&V Date (YYYY-MM-DD)	2006.09.11
V&V Edition	1
V&V Disposition and Status	OK
V&V Charge Time	6.87018955

A.2 Comments