

V&V Reference Report

L2 ASCDS Version : 8.5.1.1

Observation 6162 - L2 Version 3
Chandra X-Ray Center

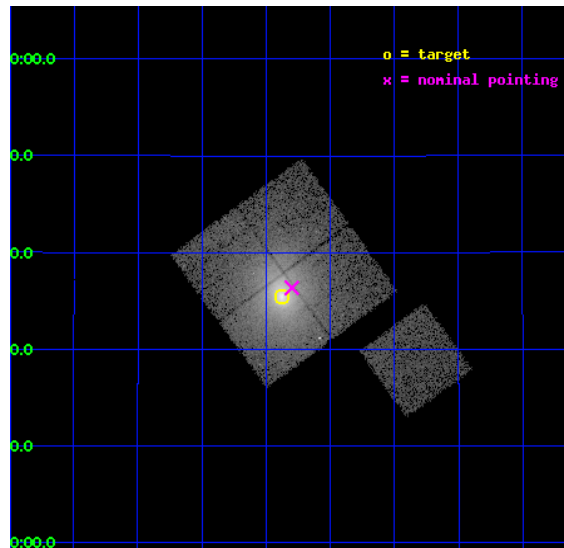
L2 Processing Date : Dec 20 2012

Contents

1	Front	2
2	OBI	3
2.1	OBI	3
2.1.1	Images	3
2.1.2	Bias	3
2.1.3	Parameters	4
2.1.4	Events	4
2.2	Compared Parameters	5
2.3	Aspect	6
2.4	Star Slots	9
2.4.1	Slot 3	9
2.4.2	Slot 4	10
2.4.3	Slot 5	11
2.4.4	Slot 6	12
2.4.5	Slot 7	13
2.5	FID Slots	14
2.5.1	Slot 0	14
2.5.2	Slot 1	15
2.5.3	Slot 2	16
A	Summary	17
A.1	Status	17
A.2	Comments	17

1 Front

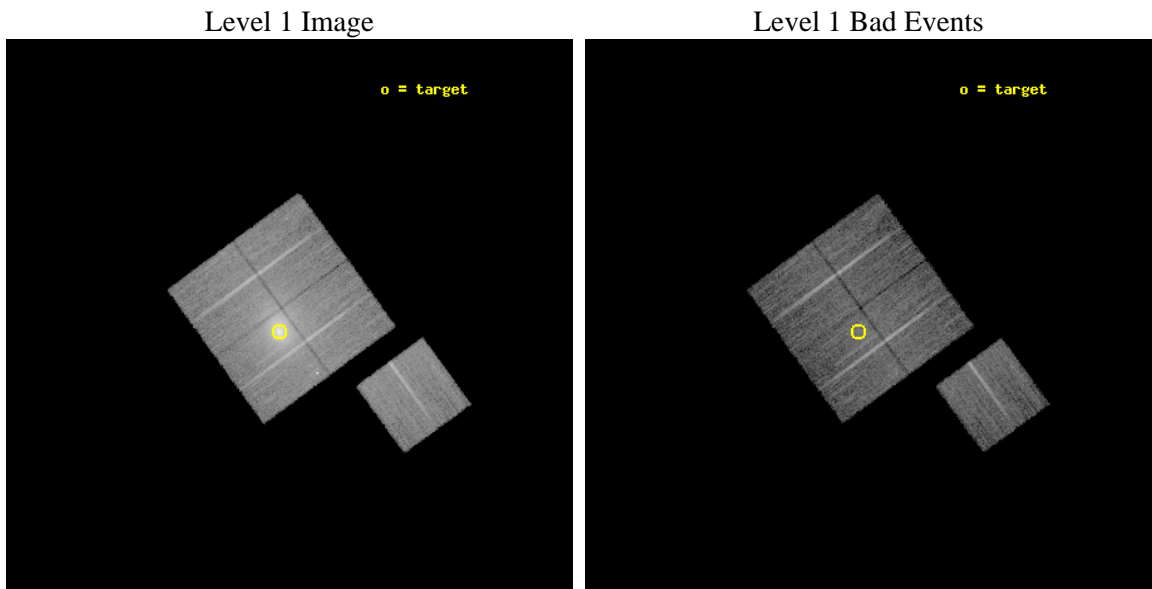
seq_num	890034	Sequence number
obs_id	6162	Observation id
title	Monitoring the Spatial Variation of the ACIS Contaminant with Abell 1795	Proposal title
observer	Dr. CXC Calibration	Principal investigator
object	A1795	Source name
dtcycle	0	
cycle	P	events from which exps? Prim/Second/Both
ra_targ	207.219583	Observer's specified target RA [deg]
dec_targ	26.590833	Observer's specified target Dec [deg]
ra_nom	207.19980372852	Nominal RA [deg]
dec_nom	26.606055460094	Nominal Dec [deg]
roll_nom	143.86314222977	Nominal Roll [deg]
revision	3	Processing version of data
ontime	13776.034838378	Sum of GTIs [s]
livetime	13596.040801446	Livetime [s]
ontime0	13772.770708174	Sum of GTIs [s]
ontime1	13769.670748055	Sum of GTIs [s]
ontime2	13775.993798375	Sum of GTIs [s]
ontime3	13776.034838378	Sum of GTIs [s]
ontime6	13775.870658427	Sum of GTIs [s]
l2events	154318	Number of level 2 events



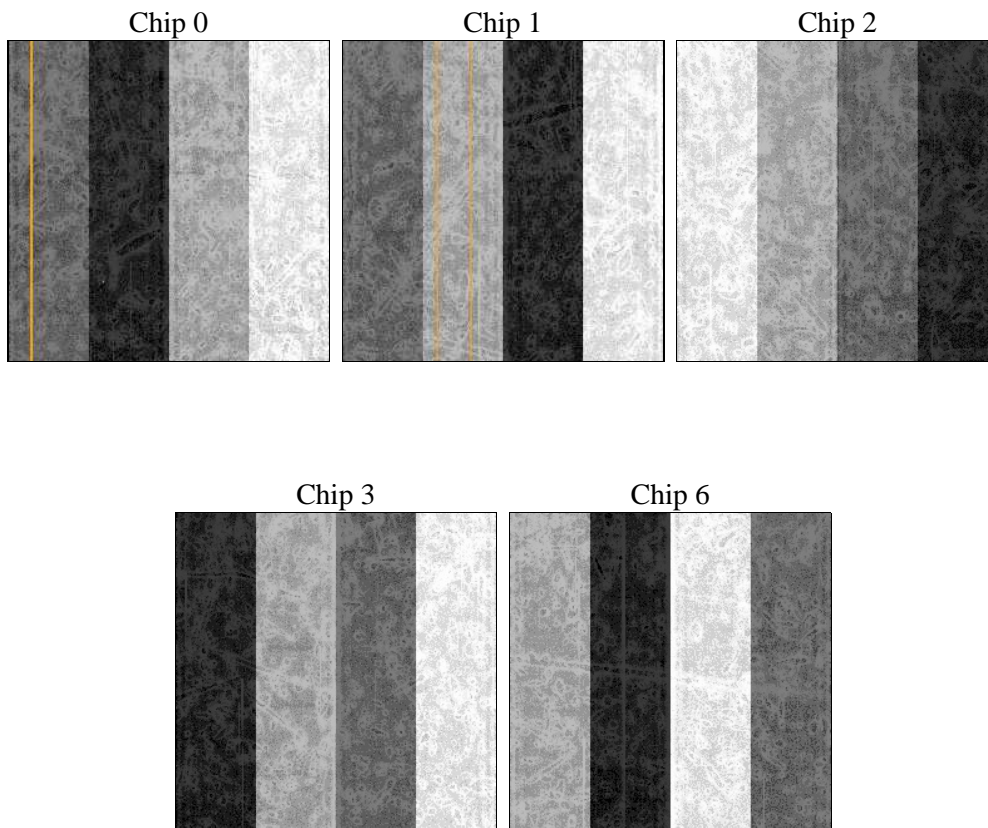
2 OBI

2.1 OBI

2.1.1 Images



2.1.2 Bias



2.1.3 Parameters

obi_num	0	Obi number	sched_exp_time	14000.000000	[s] Scheduled observation exposure time
ascdsver	8.5.1.1	Processing system revision	ontime	13776.034838378	Sum of GTIs [s]
caldbver	4.5.5	 	ontime0	13772.770708174	Sum of GTIs [s]
date	2012-12-21T01:55:00	Date and time of file creation	ontime1	13769.670748055	Sum of GTIs [s]
revision	3	Processing version of data	ontime2	13775.993798375	Sum of GTIs [s]
			ontime3	13776.034838378	Sum of GTIs [s]
			ontime6	13775.870658427	Sum of GTIs [s]
			l1events	544656	Number of level 1 events

2.1.4 Events

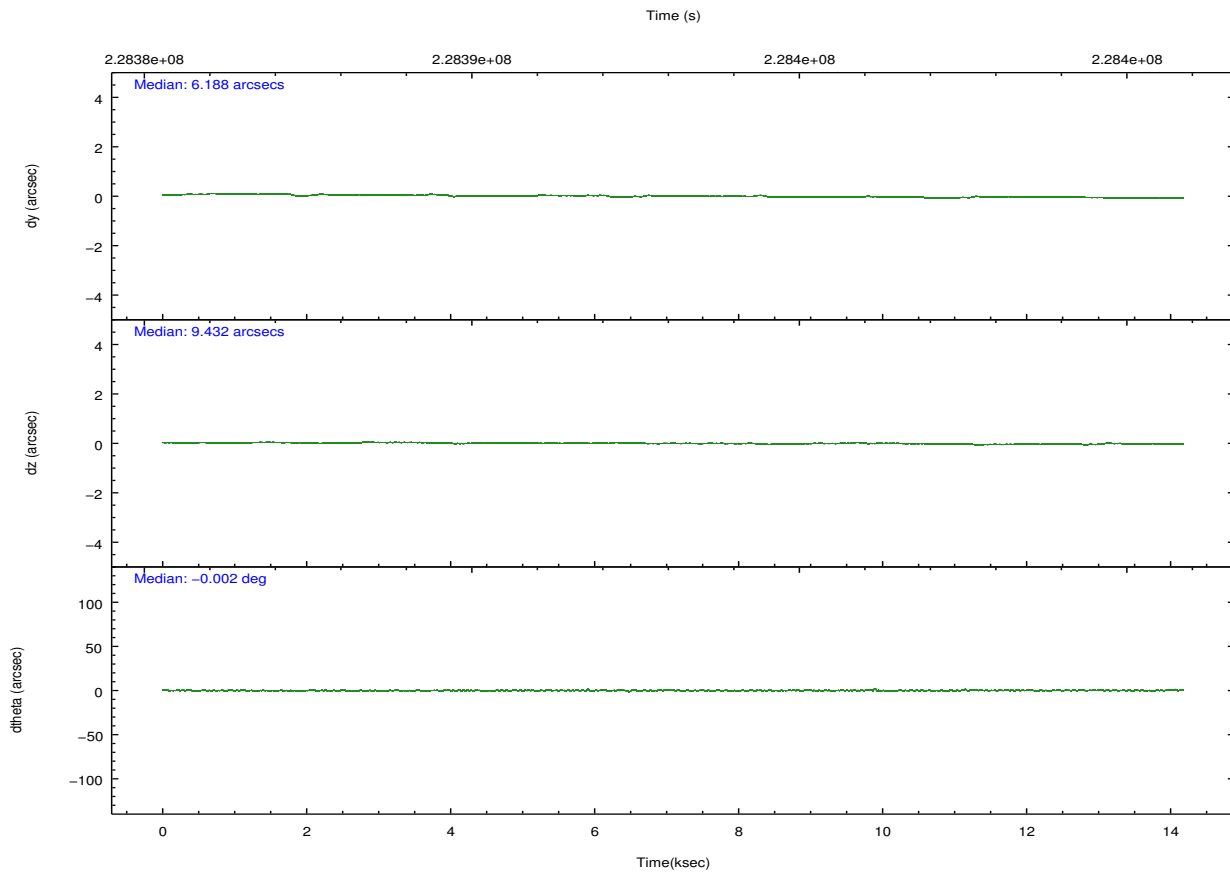
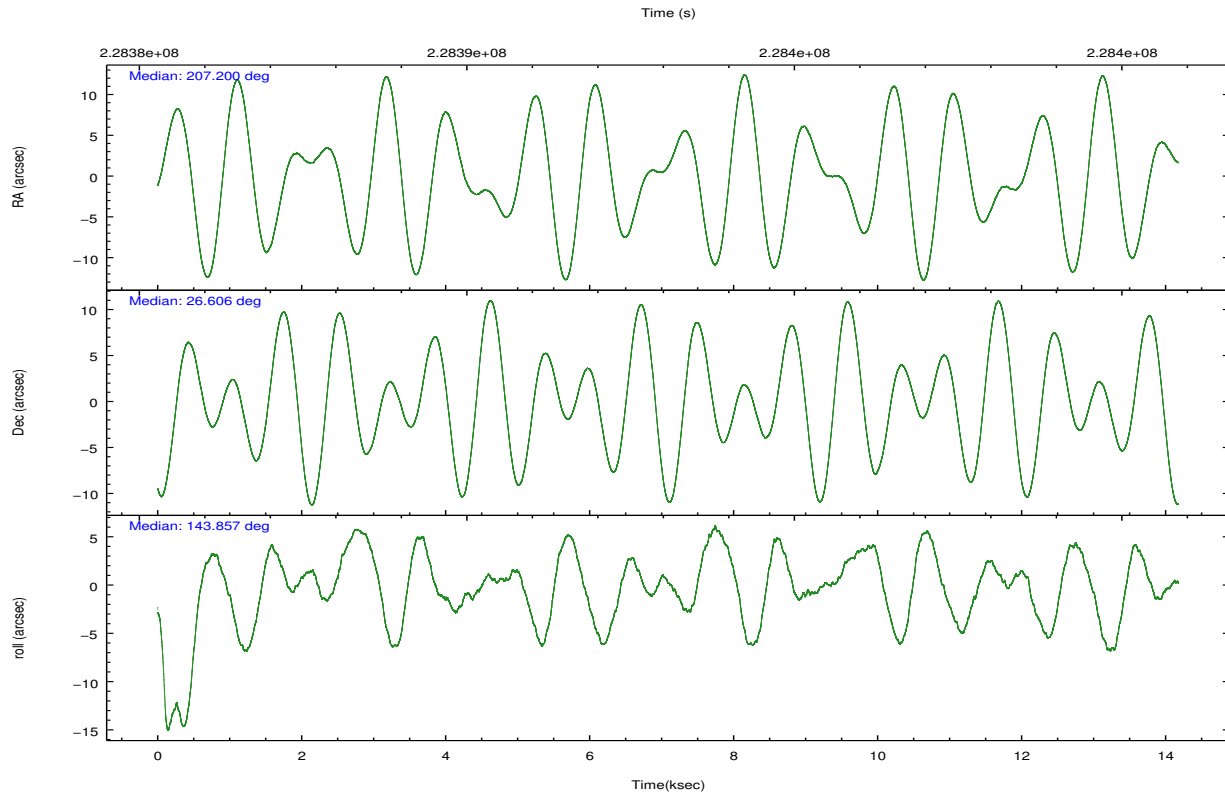
	ccd 0	ccd 1	ccd 2	ccd 3	ccd 6
level 1 events	85662	97251	101058	173304	87381
rejected events	69717	73236	79683	78080	78532
rejected %	81%	75%	78%	45%	89%

	ccd 0	ccd 1	ccd 2	ccd 3	ccd 6
grade 0 events	9171	15109	13793	74879	3239
	10%	15%	13%	43%	3%
grade 1 events	64	86	97	446	36
	0%	0%	0%	0%	0%
grade 2 events	2612	3523	3169	10010	1811
	3%	3%	3%	5%	2%
grade 3 events	1216	1547	1313	3432	976
	1%	1%	1%	1%	1%
grade 4 events	1105	1544	1285	3371	955
	1%	1%	1%	1%	1%
grade 5 events	3005	3305	2828	3636	3353
	3%	3%	2%	2%	3%
grade 6 events	1845	2299	1821	3553	1873
	2%	2%	1%	2%	2%
grade 7 events	66644	69838	76752	73977	75138
	77%	71%	75%	42%	85%

2.2 Compared Parameters

Parameter	Planned	Actual	Parameter	Planned	Actual
Instrument	ACIS	ACIS	Obspar format version number	7	7
Detector	ACIS-01236	ACIS-01236	Obspar file type	PREDICTED	ACTUAL
Grating	NONE	NONE	Obspar update status	NONE	UPDATED
Data mode	VFAINT	VFAINT	Number of optional ACIS chips dropped	0	0
Observation mode	POINTING	POINTING	On-chip summing requested	N	N
[deg] Pointing RA	207.230272	207.1998037285204	Subarray requested	NONE	NONE
[deg] Pointing Dec	26.603260	26.60605546009407	Alternating exposures requested	N	N
[deg] Pointing Roll	143.640814	143.8631422297701	[s] Primary exposure time	0.000000	3.1
[mm] SIM focus pos	-0.782348	-0.7809083437167272			
[mm] SIM defocus	0	0.001439871863259334			
[mm] SIM translation stage pos	-230.252463	-230.2509380556586			
[mm] SIM translation stage offset	-3.34	-3.341514947271122			
[s] Observation start time (MET)	228386164.184000	228385787.73698			
Observation start date	2005-03-28T08:35:00	2005-03-28T08:29:47			
[s] Observation end time (MET)	228400164.184000	228401047.42517			
Observation end date	2005-03-28T12:28:20	2005-03-28T12:44:07			
Read mode	TIMED	TIMED			

2.3 Aspect

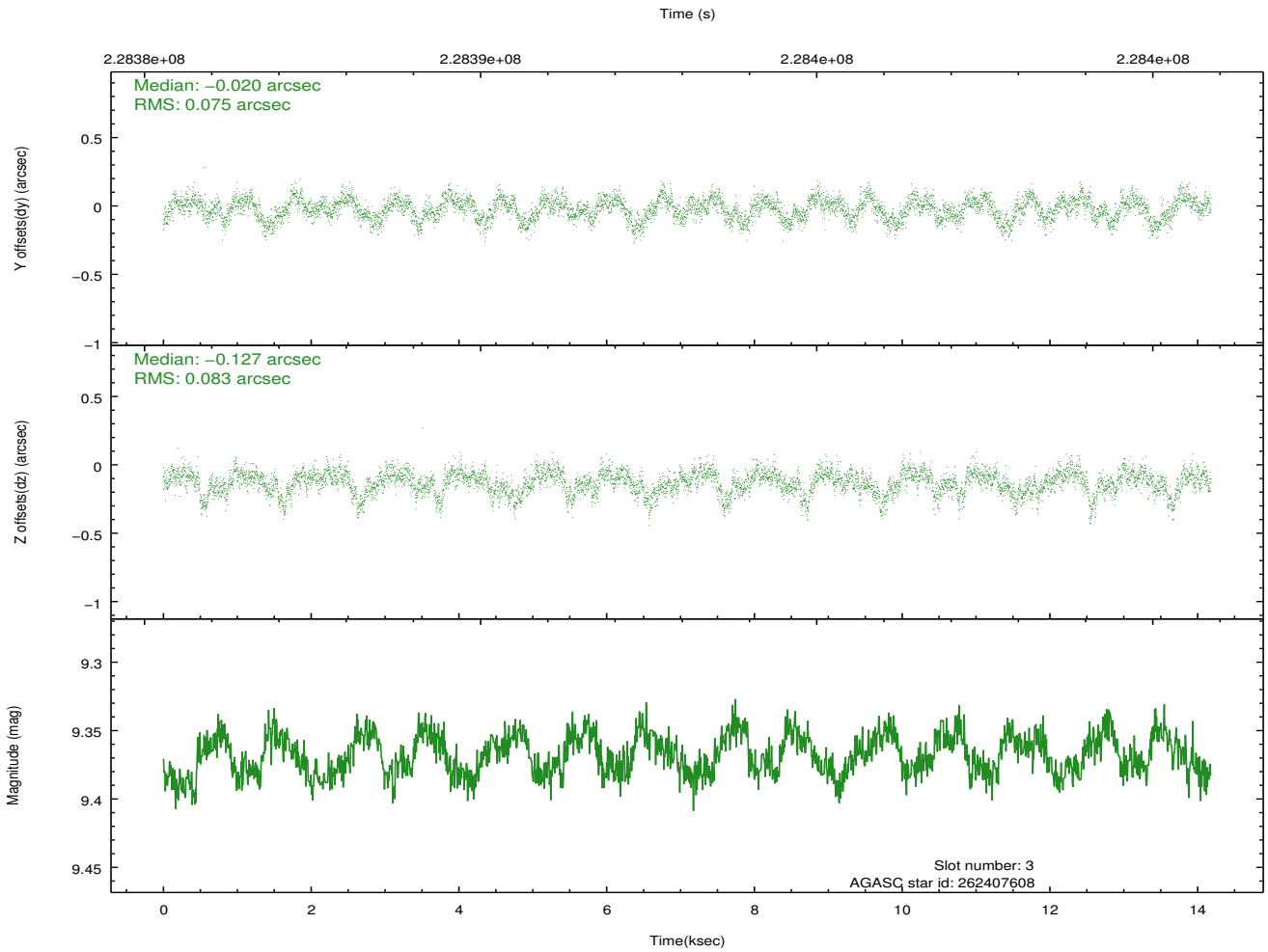
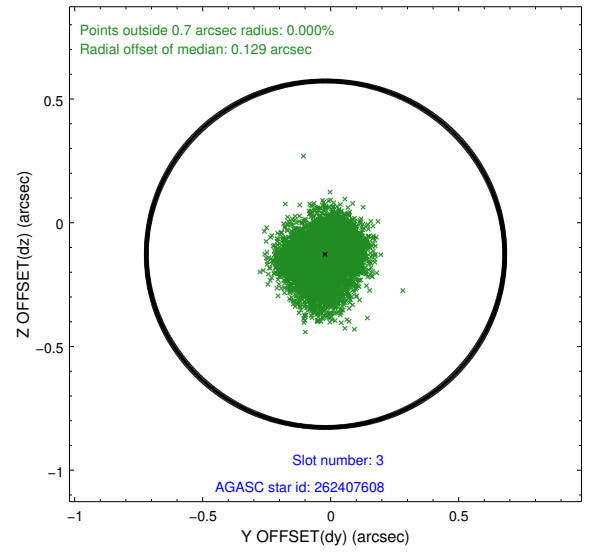
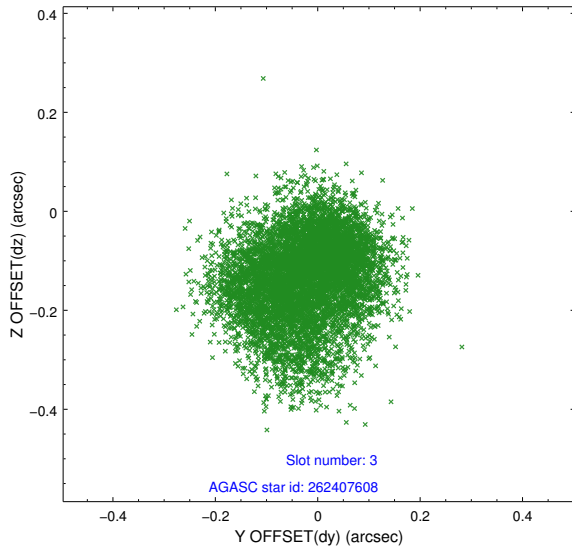


Slot Statistics

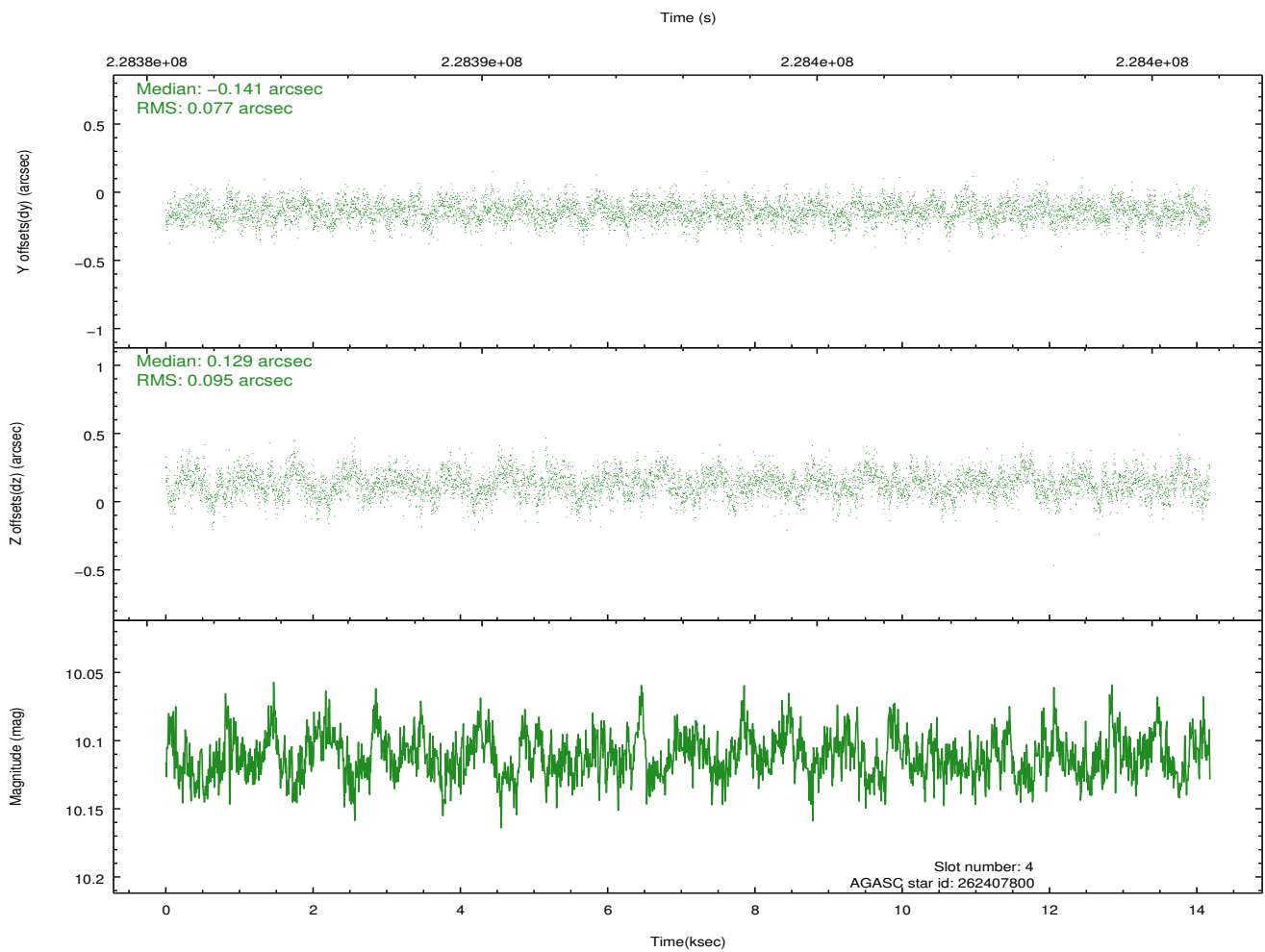
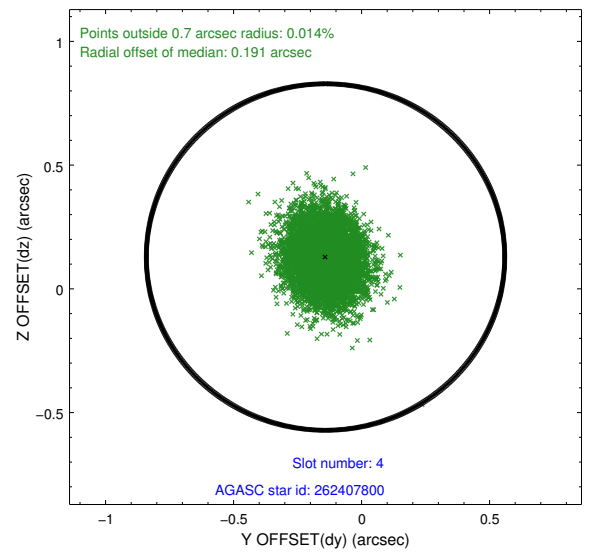
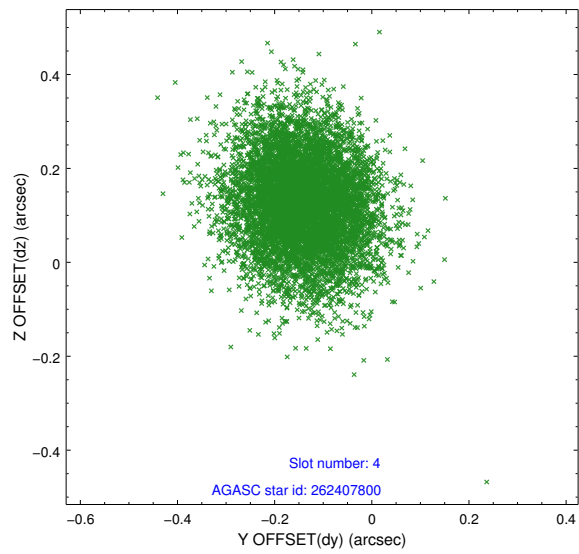
slot	status	id	mag	n_pts	med_dy	med_dz	dr1	dr2	ra	dec	mean_y	mean_z
0	FID	ACIS-I-1	7.24	3459	0.062	0.006	0.006	0.011	0.000000	0.000000	933.51	-901.42
1	FID	ACIS-I-5	7.23	3459	-0.214	0.073	0.006	0.011	0.000000	0.000000	-1814.69	995.95
2	FID	ACIS-I-6	7.26	3458	0.061	-0.009	0.007	0.011	0.000000	0.000000	398.70	1640.75
3	GUIDE	262407608	9.37	6916	-0.020	-0.127	0.119	0.191	207.378401	26.435507	-742.25	202.91
4	GUIDE	262407800	10.11	6907	-0.141	0.129	0.129	0.210	207.321181	27.251762	1150.80	-2051.56
5	GUIDE	262408096	9.34	6917	0.053	-0.029	0.108	0.182	207.011678	26.515421	380.57	671.52
6	GUIDE	262408936	9.68	6910	0.071	0.087	0.128	0.208	207.154731	26.726554	459.10	-213.15
7	GUIDE	262411960	9.69	6912	0.037	-0.060	0.132	0.205	207.327895	25.881727	-1794.39	1904.14

2.4 Star Slots

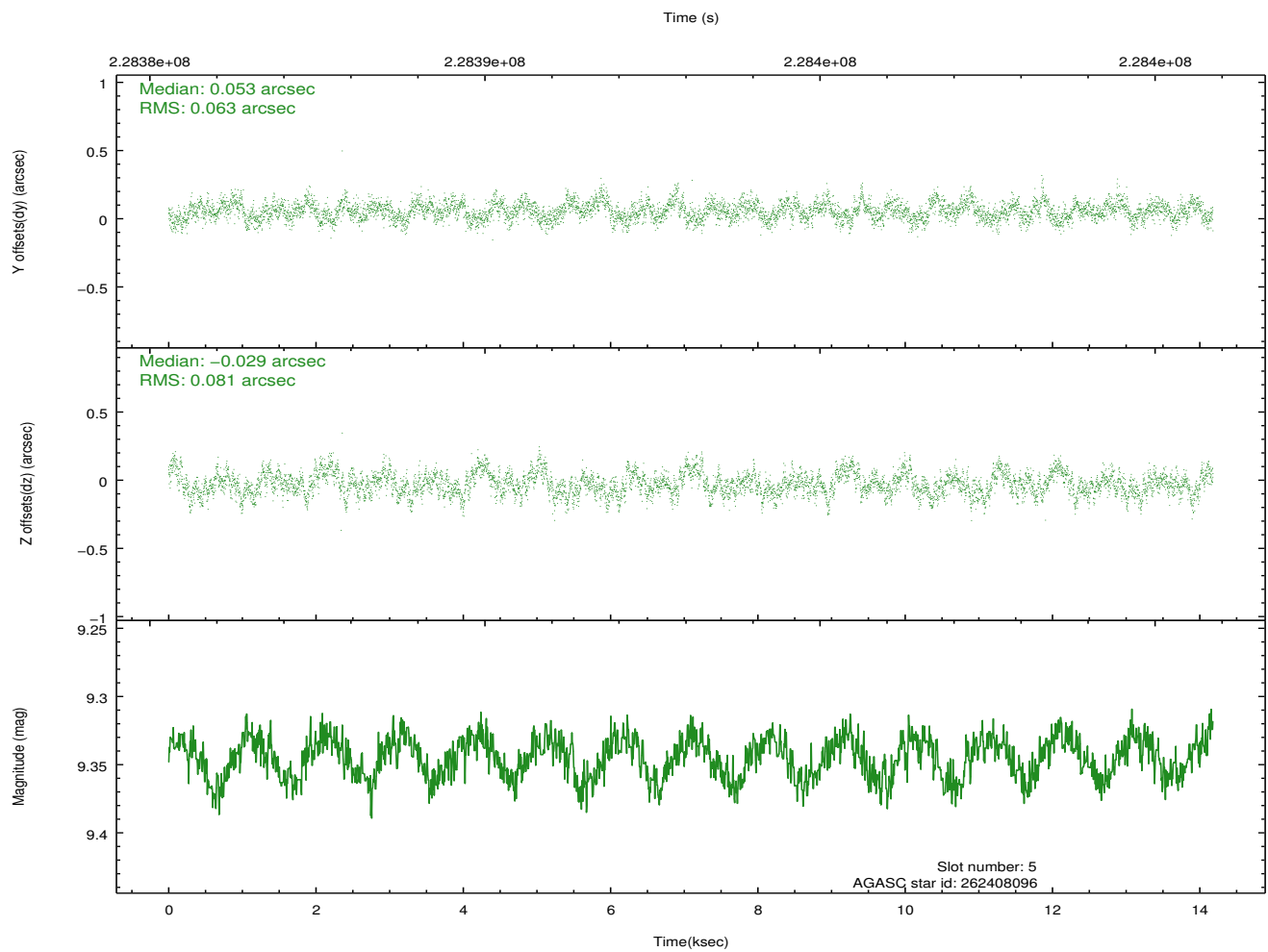
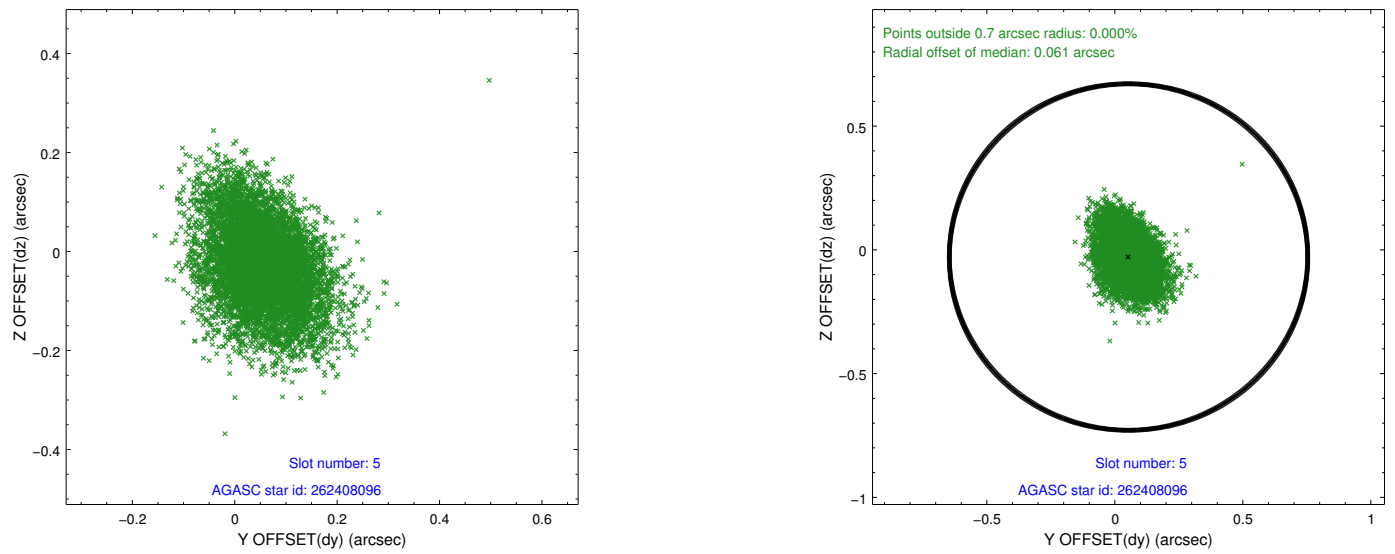
2.4.1 Slot 3



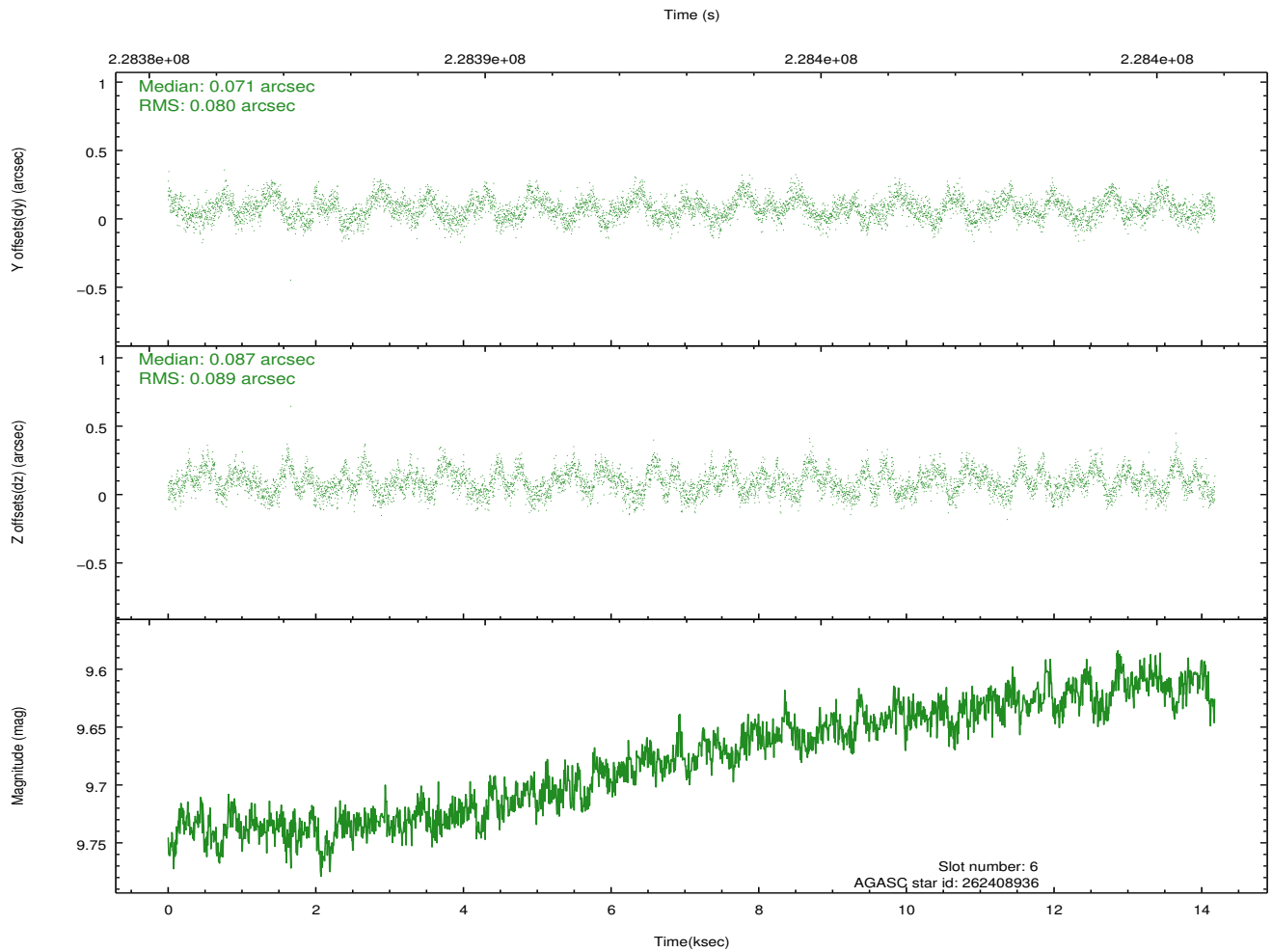
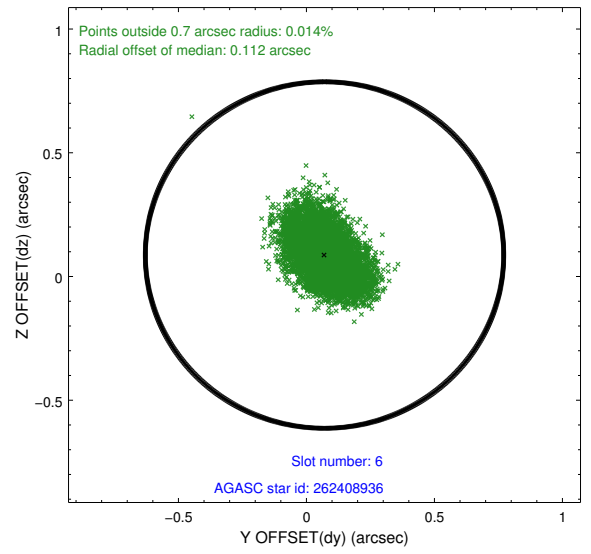
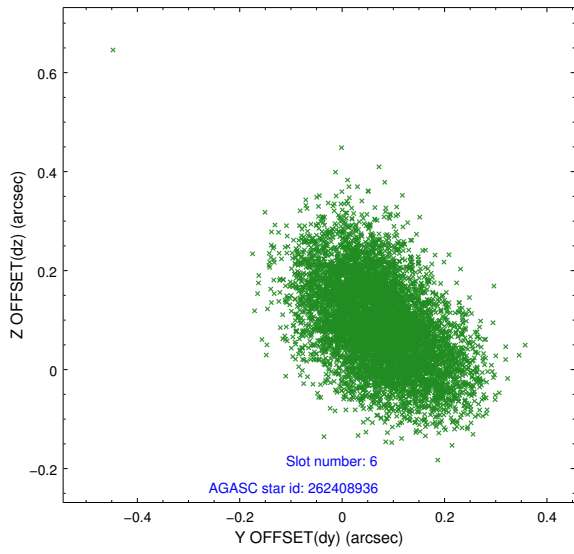
2.4.2 Slot 4



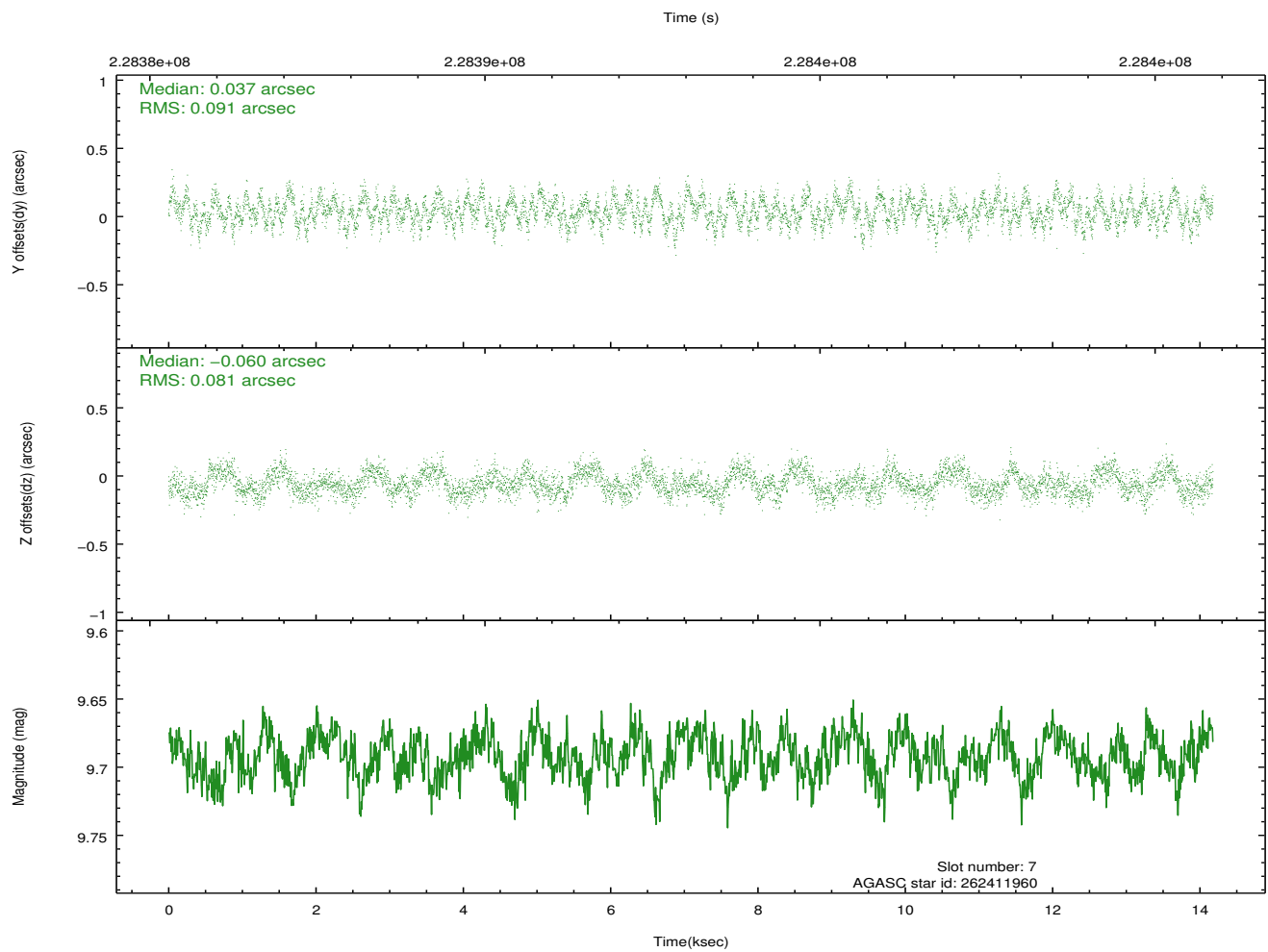
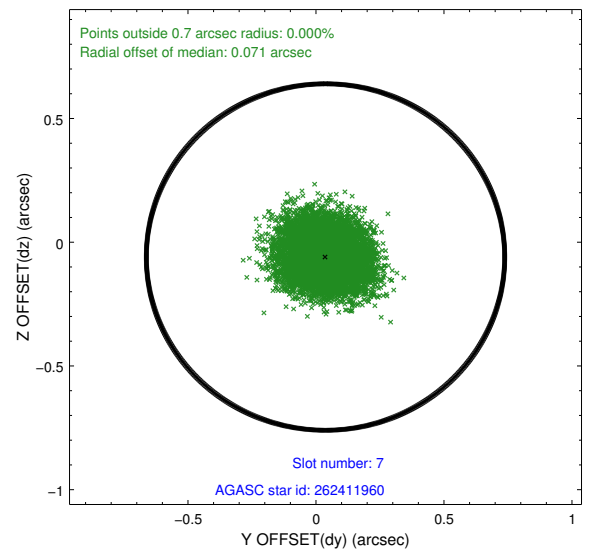
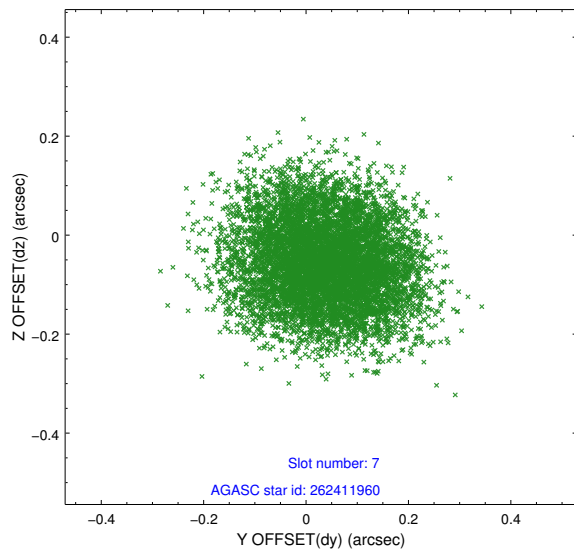
2.4.3 Slot 5



2.4.4 Slot 6

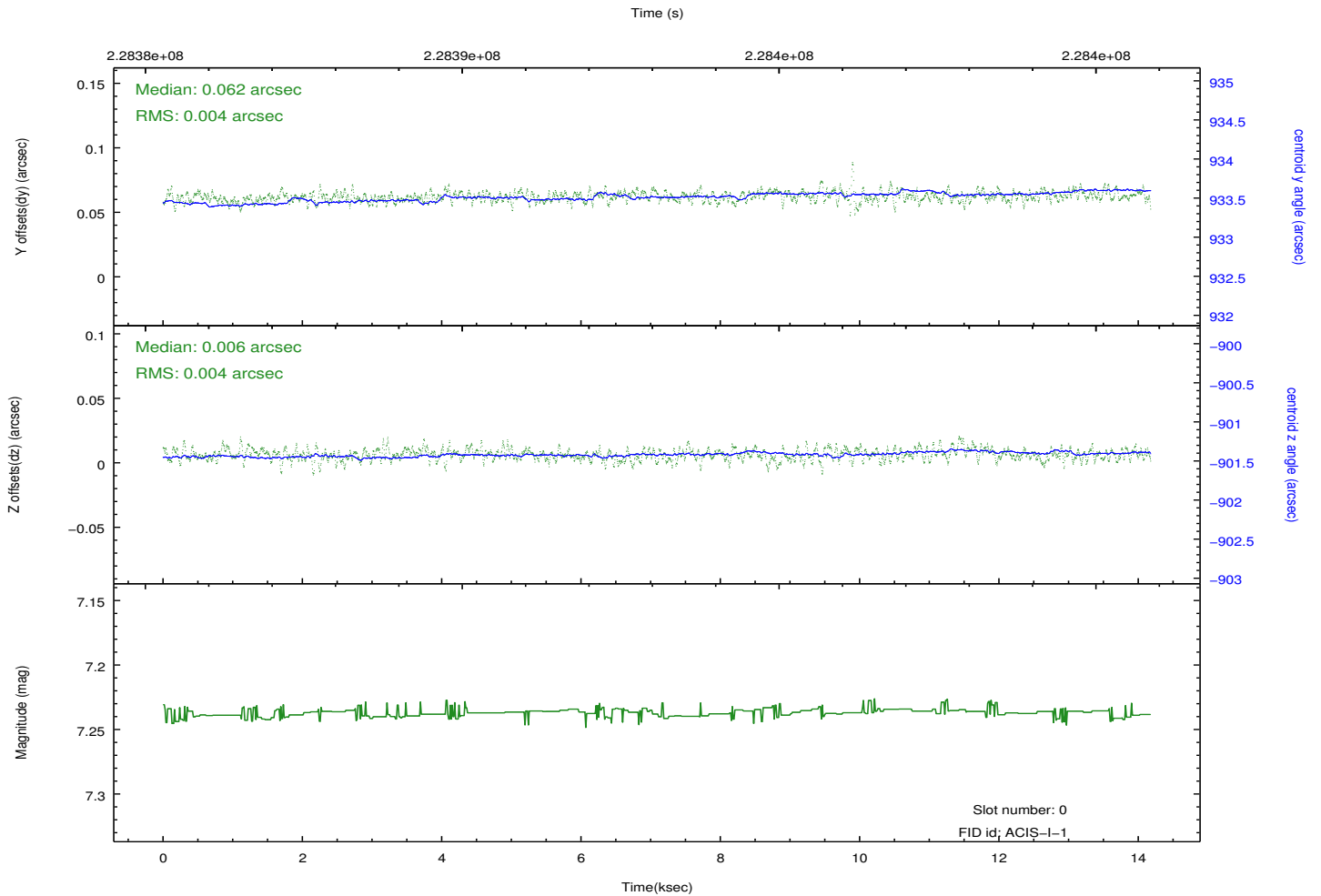
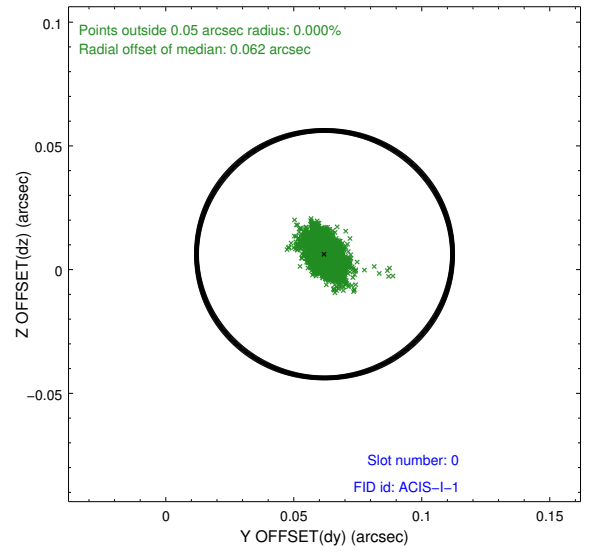
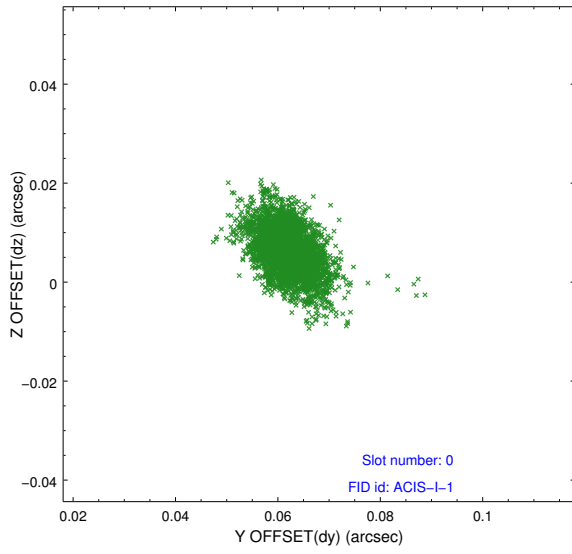


2.4.5 Slot 7

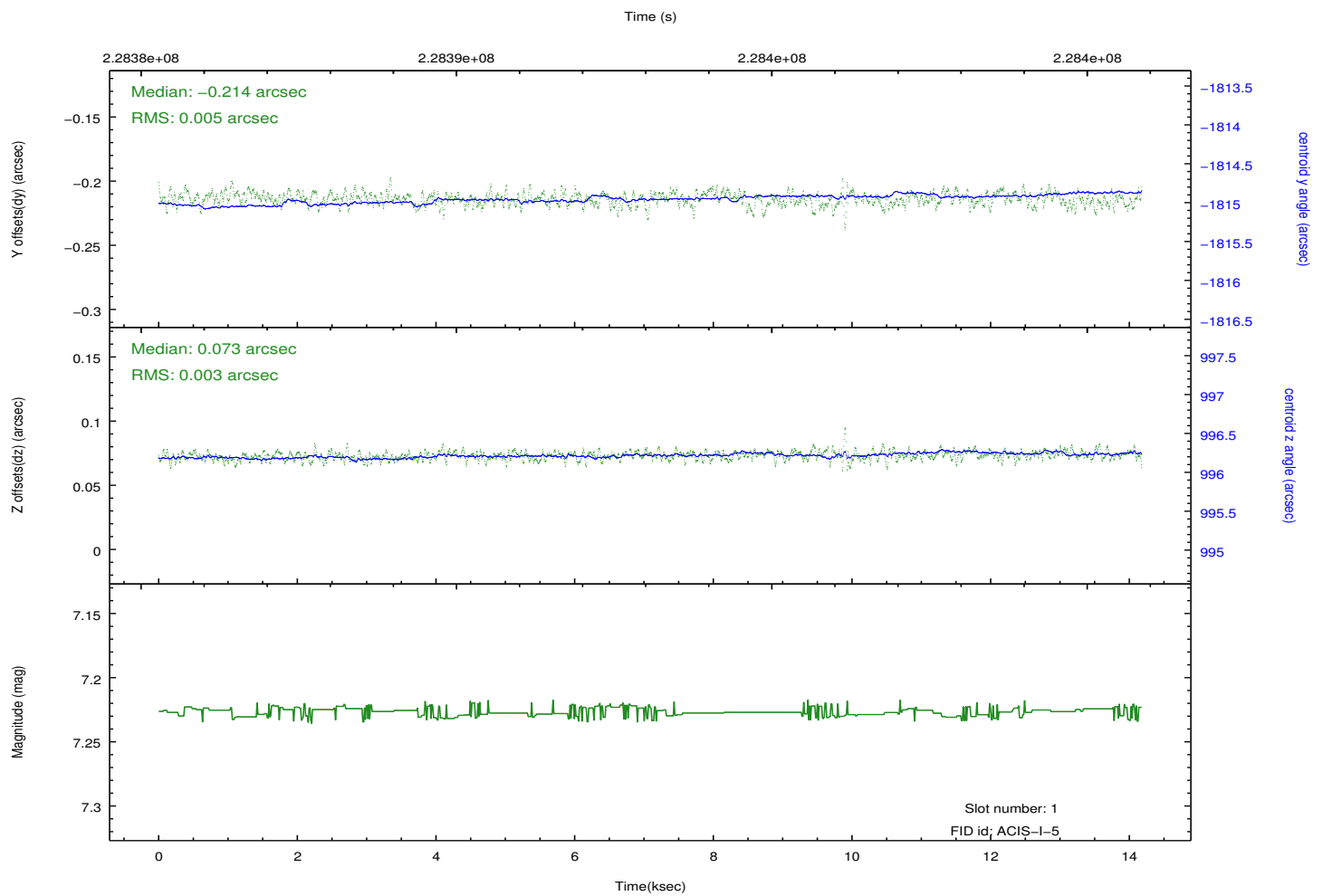
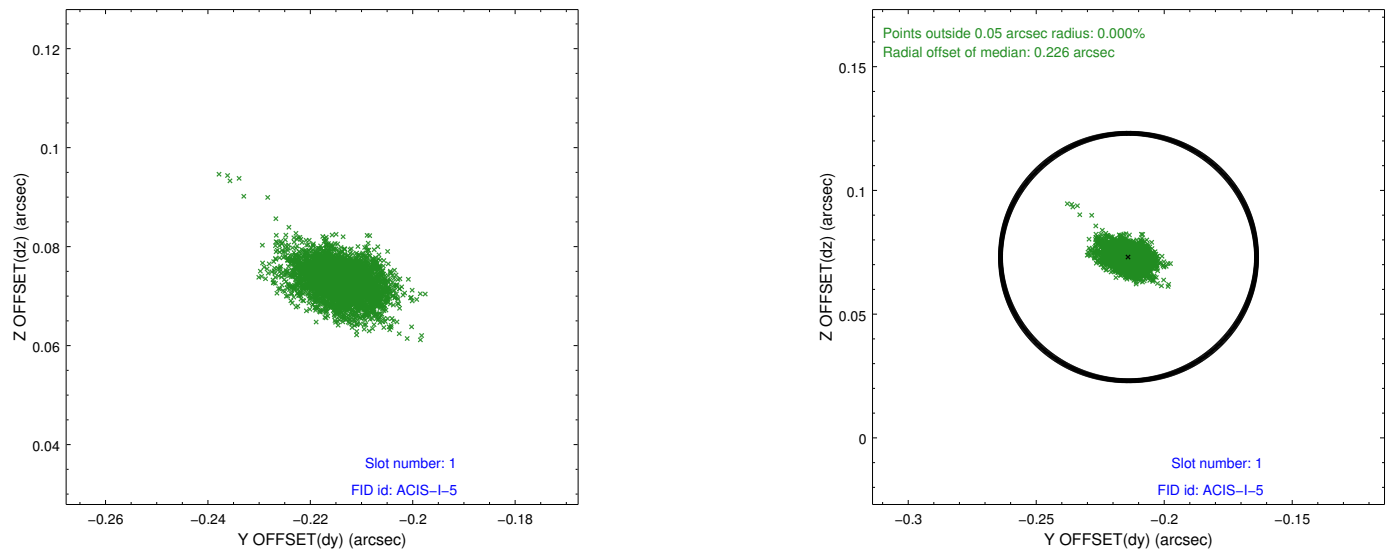


2.5 FID Slots

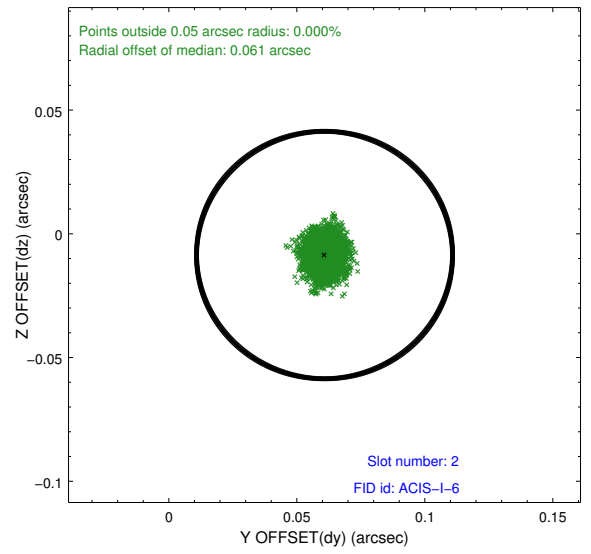
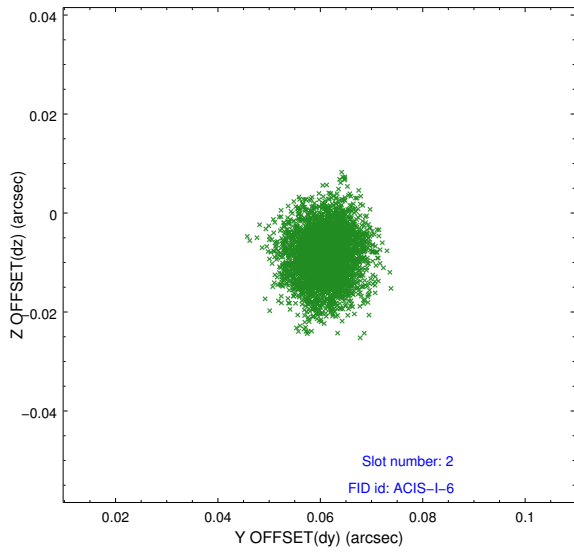
2.5.1 Slot 0



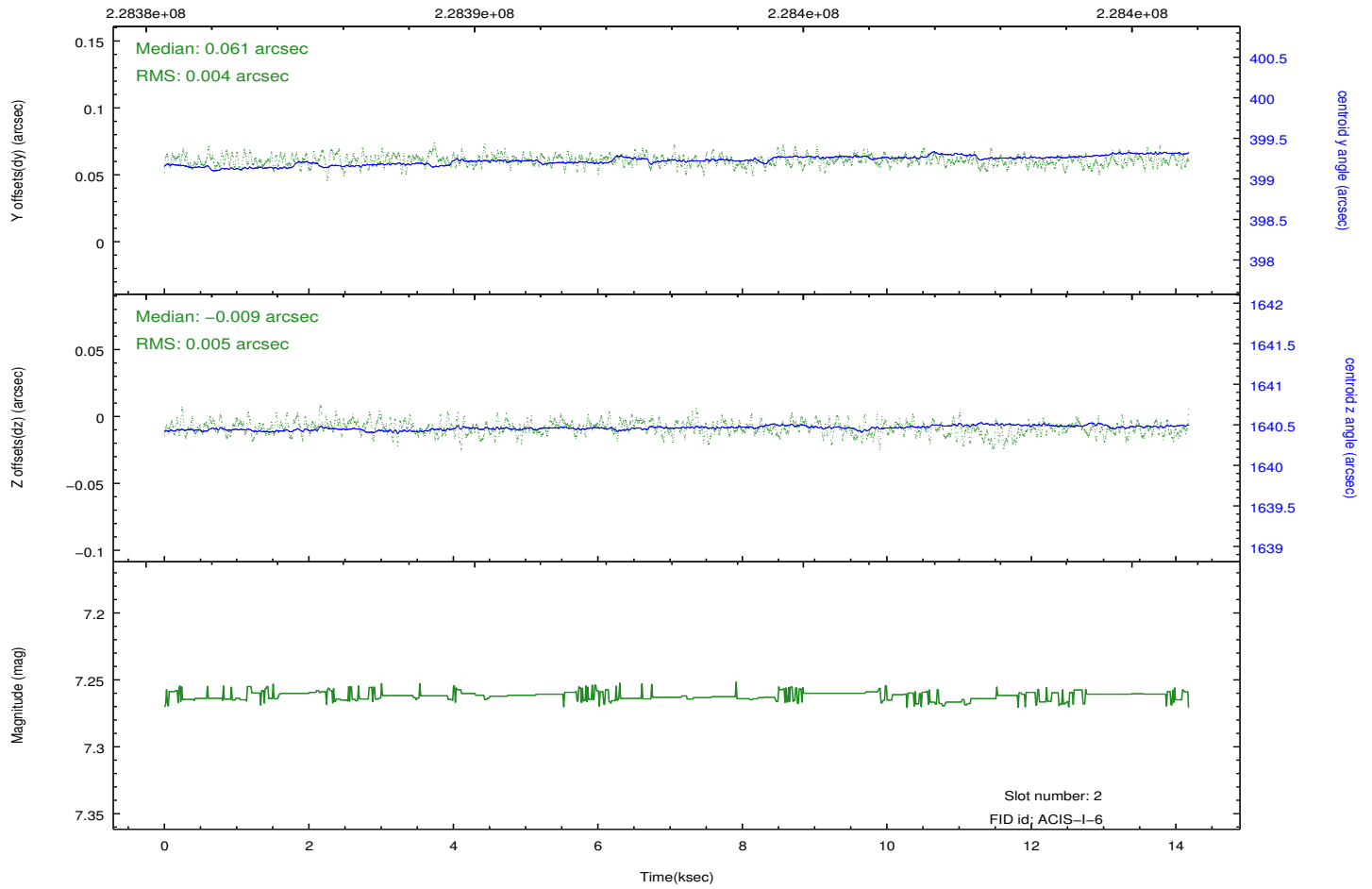
2.5.2 Slot 1



2.5.3 Slot 2



Time (s)



A Summary

A.1 Status

V&V Scientist	Jen Lauer
V&V Date (YYYY-MM-DD)	2013.01.14
V&V Edition	1
V&V Disposition and Status	OK
V&V Charge Time	13.77639

A.2 Comments