

V&V Reference Report

L2 ASCDS Version : 8.5.1

Observation 6202 - L2 Version 4
Chandra X-Ray Center

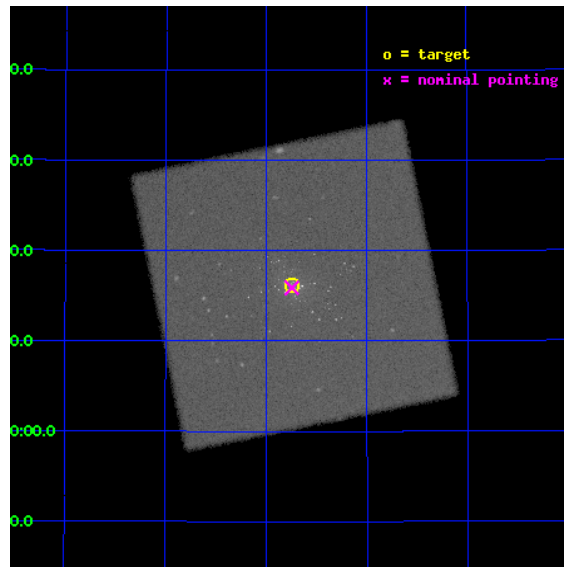
L2 Processing Date : Dec 16 2012

Contents

1	Front	2
2	OBI	3
2.1	OBI	3
2.1.1	Images	3
2.1.2	Parameters	4
2.1.3	Events	4
2.2	Compared Parameters	5
2.3	Aspect	6
2.4	Star Slots	9
2.4.1	Slot 3	9
2.4.2	Slot 4	10
2.4.3	Slot 5	11
2.4.4	Slot 6	12
2.4.5	Slot 7	13
2.5	FID Slots	14
2.5.1	Slot 0	14
2.5.2	Slot 1	15
2.5.3	Slot 2	16
A	Summary	17
A.1	Status	17
A.2	Comments	17

1 Front

seq_num	600446	Sequence number
obs_id	6202	Observation id
title	M31* - The Nearest Extra-galactic SuperMassive Black Hole	Proposal
observer	Dr. Michael Garcia	Principal investigator
object	M31*	Source name
ra_targ	10.685	Observer's specified target RA [deg]
dec_targ	41.268972	Observer's specified target Dec [deg]
ra_nom	10.686029978117	Nominal RA [deg]
dec_nom	41.264959738833	Nominal Dec [deg]
roll_nom	303.50383478818	Nominal Roll [deg]
revision	4	Processing version of data
ontime	18170.432071477	[s]
livedtime	18045.709816177	Ontime multiplied by DTCOR
l2events	702804	Number of level 2 events

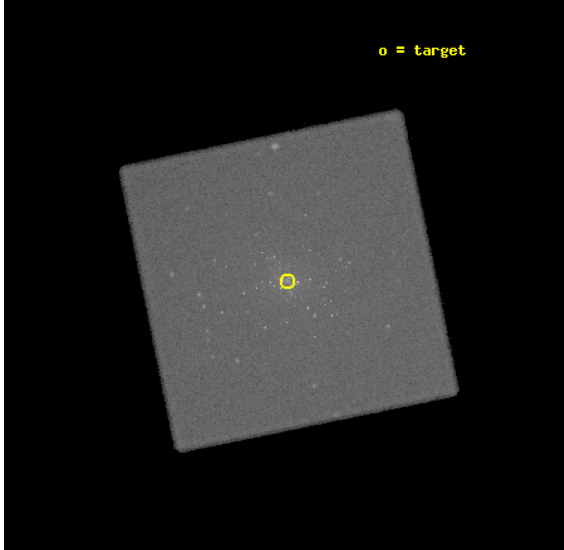


2 OBI

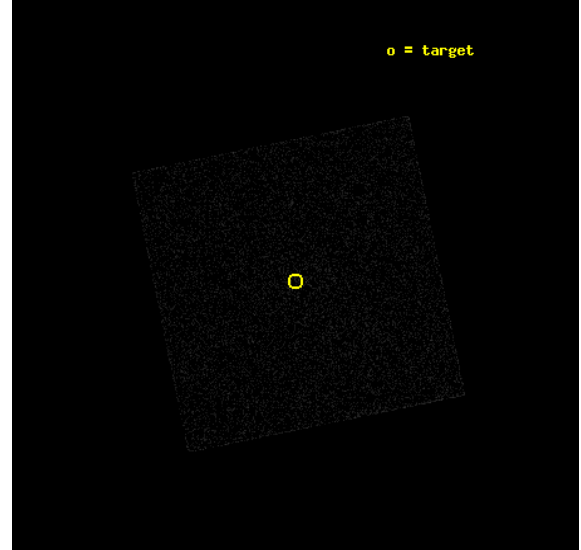
2.1 OBI

2.1.1 Images

Level 1 Image



Level 1 Bad Events



2.1.2 Parameters

obi_num	1	Obi number	sched_exp_time	18000.000000	[s] Scheduled observation exposure time
ascdsver	8.5.1	Processing system revision	ontime	18170.432071477	[s]
caldbver	4.5.5	 	l1events	1117660	Number of level 1 events
date	2012-12-16T12:28:00	Date and time of file creation			
revision	4	Processing version of data			

2.1.3 Events

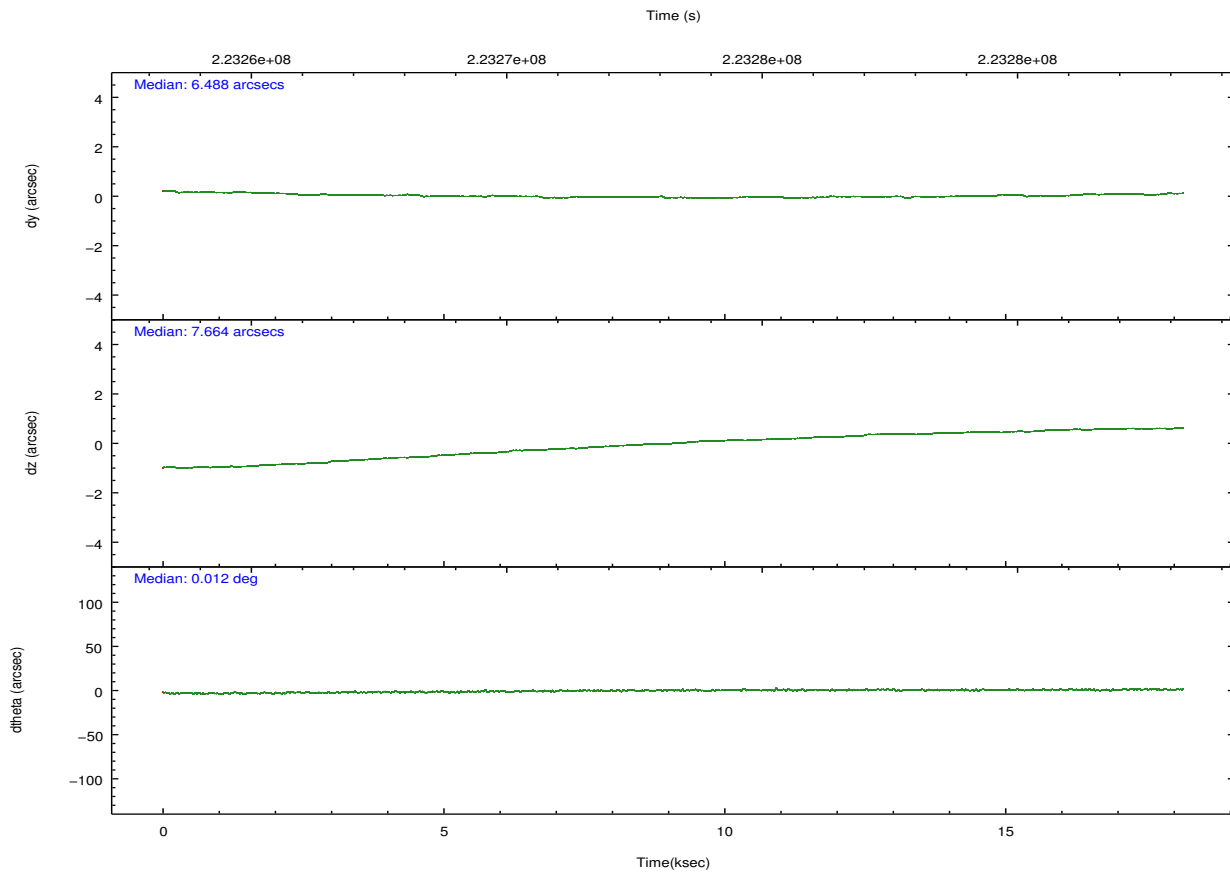
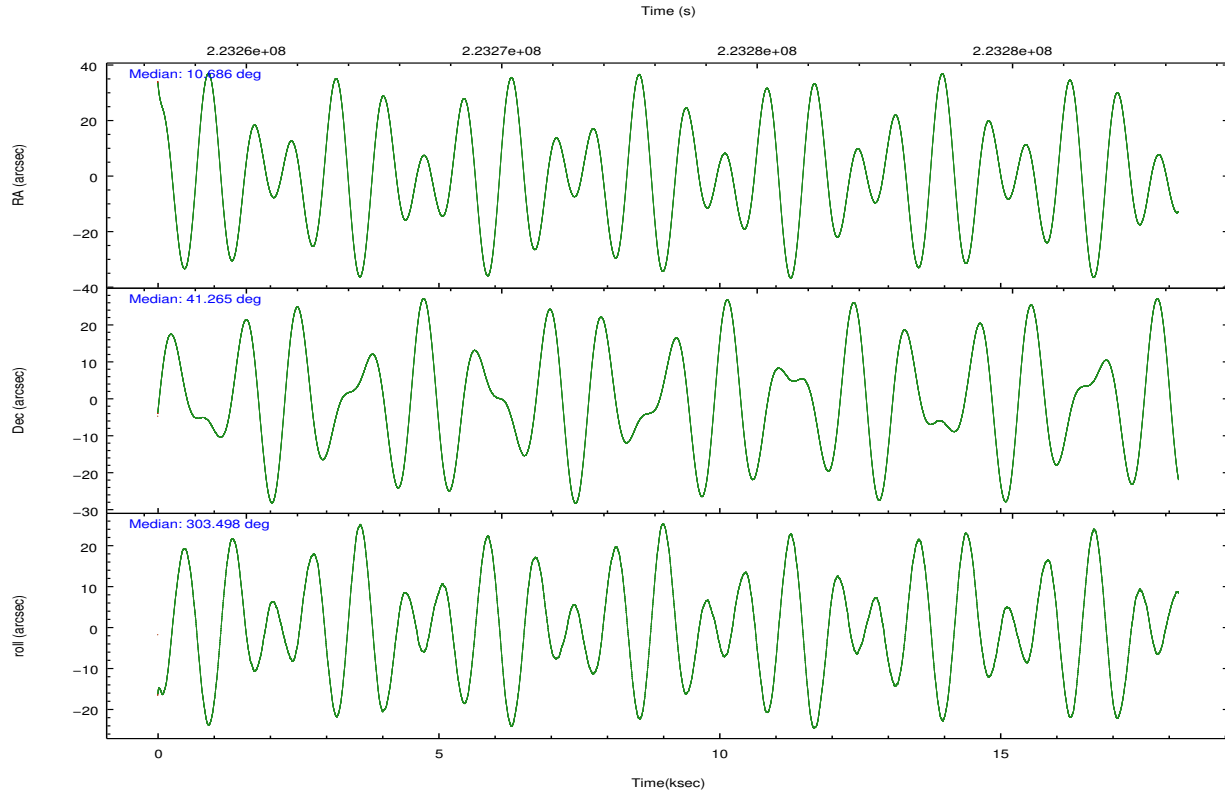
Level 1 Events

	segment 0
level 1 events	1117660
rejected events	97821
rejected %	8%

2.2 Compared Parameters

Parameter	Planned	Actual	Parameter	Planned	Actual
Instrument	HRC	HRC	Obspar format version number	7	7
Detector	HRC-I	HRC-I	Obspar file type	PREDICTED	ACTUAL
Grating	NONE	NONE	Obspar update status	NONE	UPDATED
Data mode	OBSERVING	OBSERVING			
Observation mode	POINTING	POINTING			
[deg] Pointing RA	10.653396	10.68602997811713			
[deg] Pointing Dec	41.276393	41.26495973883343			
[deg] Pointing Roll	303.620850	303.5038347881761			
[mm] SIM focus pos	-1.040293	-1.038866356238299			
[mm] SIM defocus	0	0.001426264420575141			
[mm] SIM translation stage pos	126.985494	126.9854943052878			
[mm] SIM translation stage offset	0	-5.413686238853188e-06			
[s] Observation start time (MET)	223264340.184000	223263167.55497			
Observation start date	2005-01-28T01:51:16	2005-01-28T01:32:47			
[s] Observation end time (MET)	223282340.184000	223283164.28087			
Observation end date	2005-01-28T06:51:16	2005-01-28T07:06:04			

2.3 Aspect



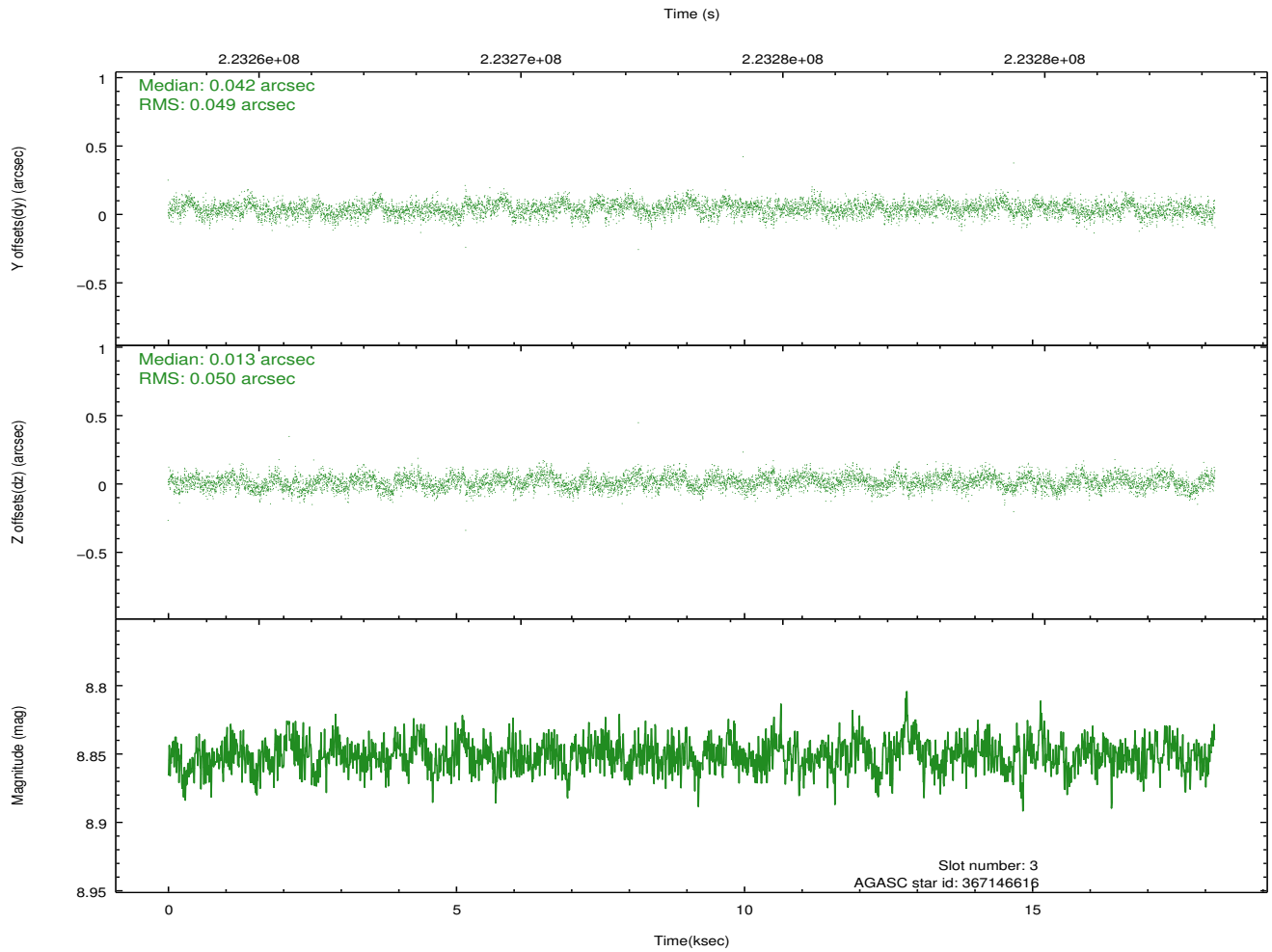
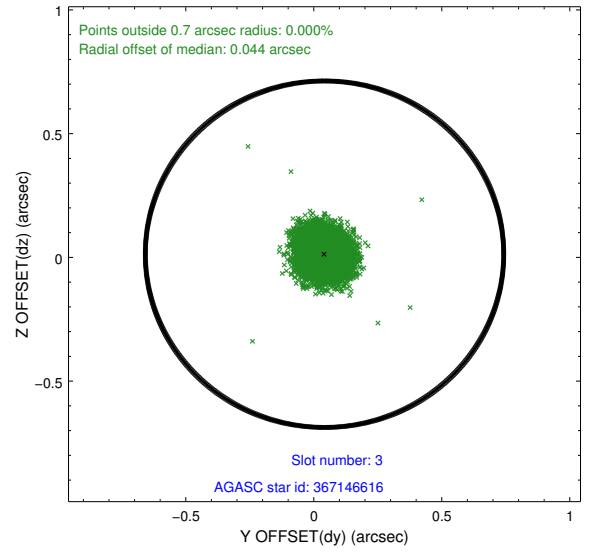
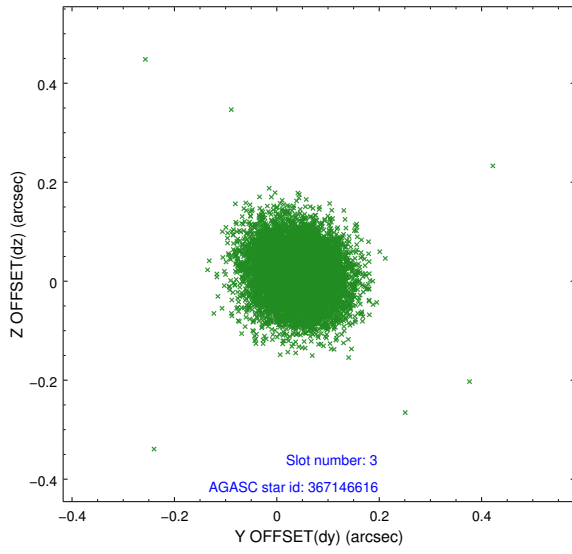
Slot Statistics

slot	status	id	mag	n_pts	med_dy	med_dz	dr1	dr2	ra	dec	mean_y	mean_z
0	FID	HRC-I-1	7.02	4433	-0.019	-0.027	0.018	0.032	0.000000	0.000000	-762.19	-1295.47
1	FID	HRC-I-2	7.06	4433	0.095	-0.083	0.020	0.045	0.000000	0.000000	850.38	-1297.49
2	FID	HRC-I-4	7.06	4433	0.042	0.014	0.015	0.024	0.000000	0.000000	1281.01	1006.31
3	GUIDE	367146616	8.85	8860	0.042	0.013	0.074	0.118	11.418645	41.190163	1399.22	1559.60
4	GUIDE	367148872	7.23	8863	0.063	-0.106	0.071	0.114	10.505940	40.688258	1541.12	-1507.44
5	GUIDE	367657896	9.01	8858	0.001	0.051	0.085	0.139	11.197765	41.313576	700.32	1302.28
6	GUIDE	367663272	9.29	8860	-0.091	0.013	0.090	0.153	10.656279	41.699429	-1263.51	849.21
7	GUIDE	367674552	8.85	8858	-0.017	0.029	0.083	0.134	11.016238	41.570845	-343.00	1401.88

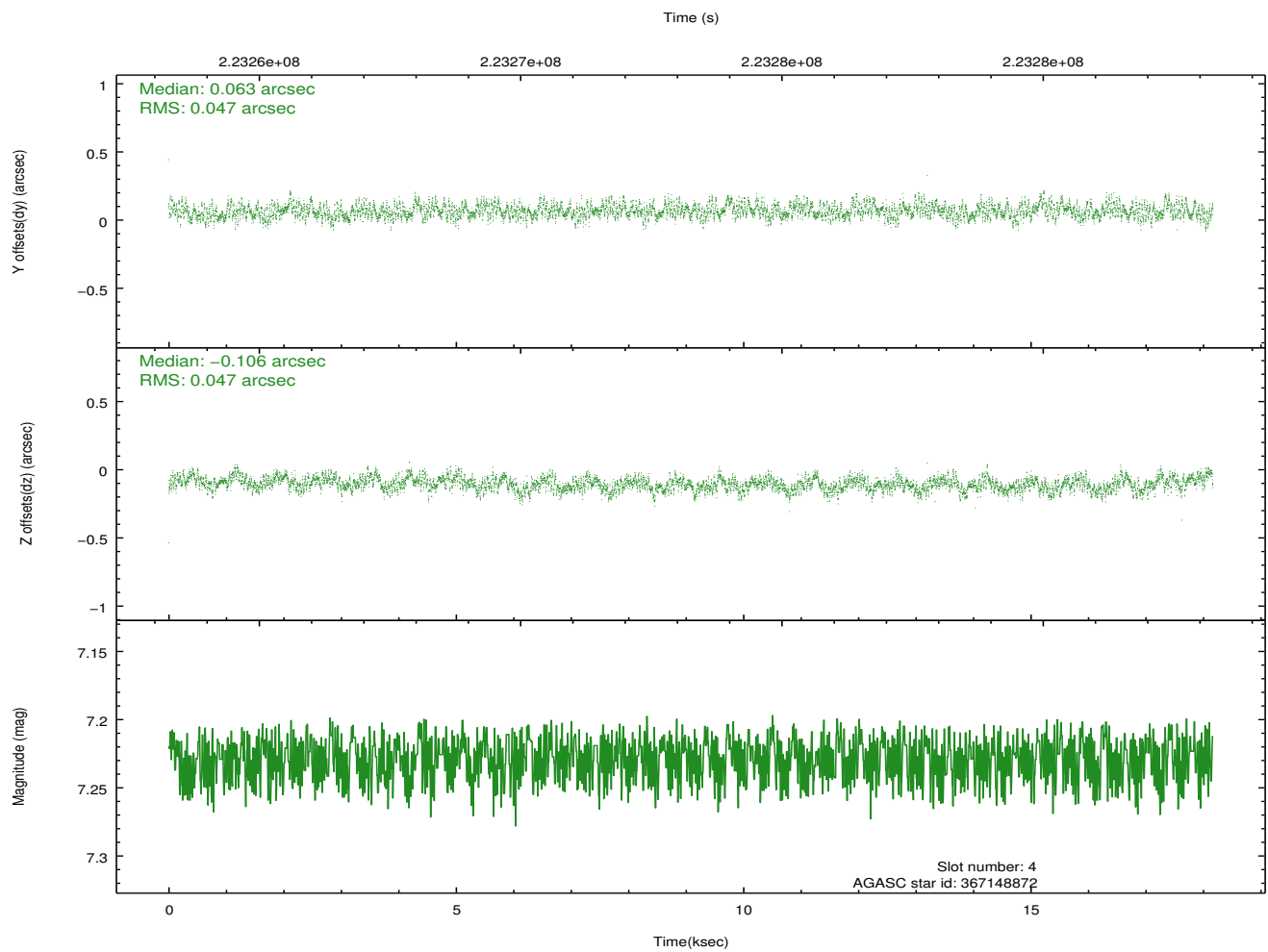
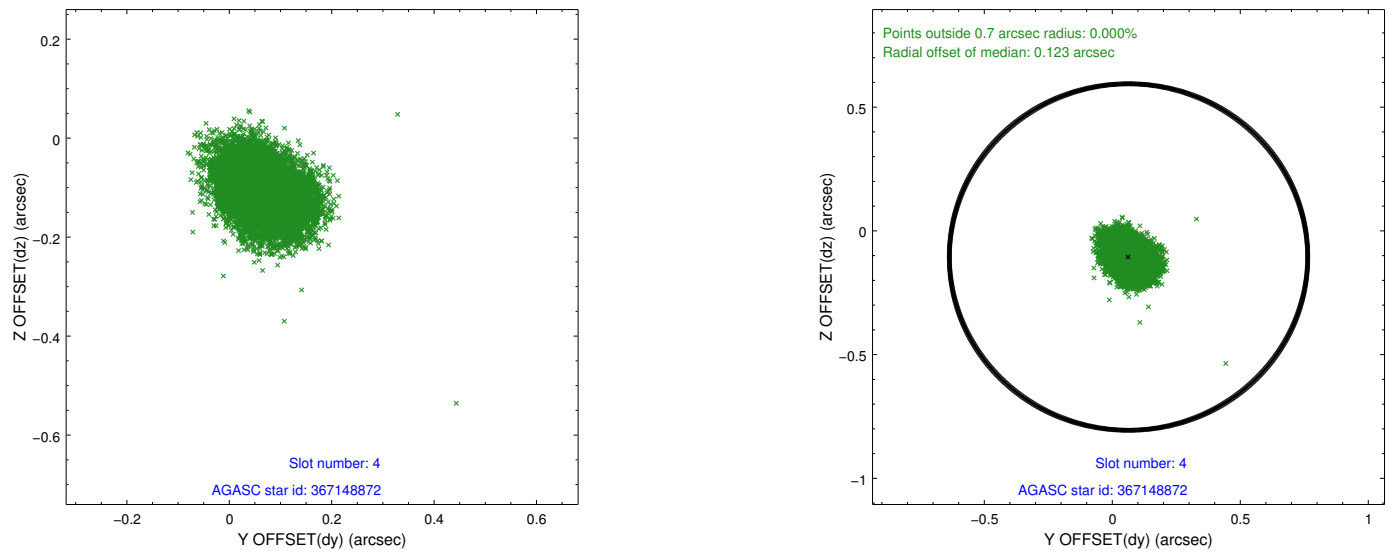
∞

2.4 Star Slots

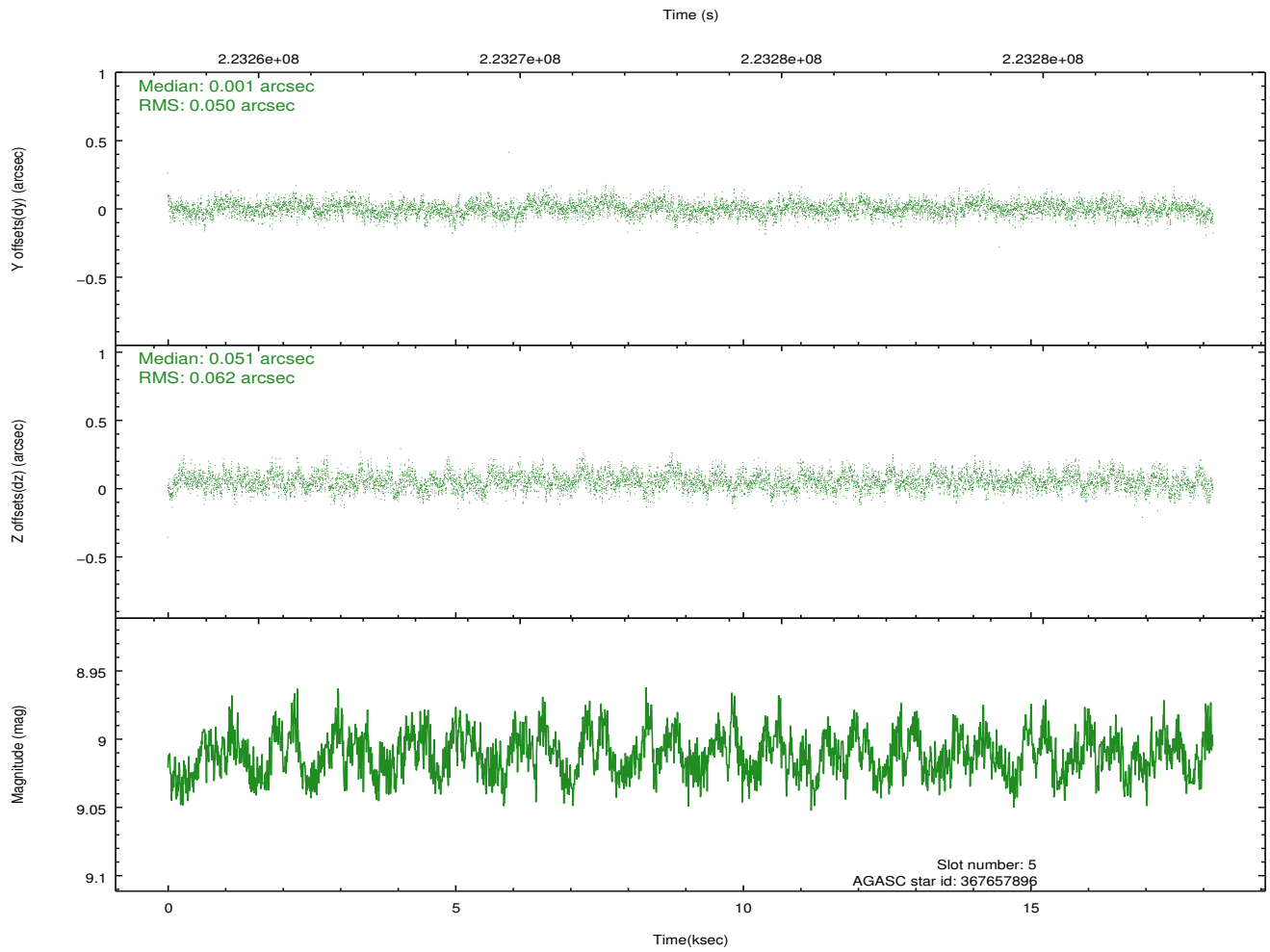
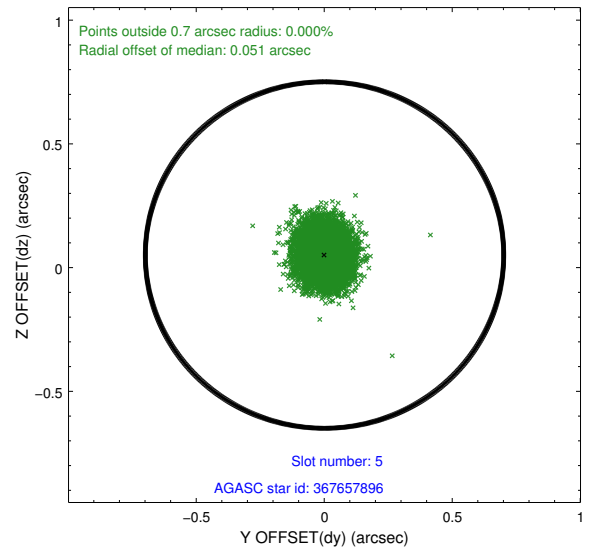
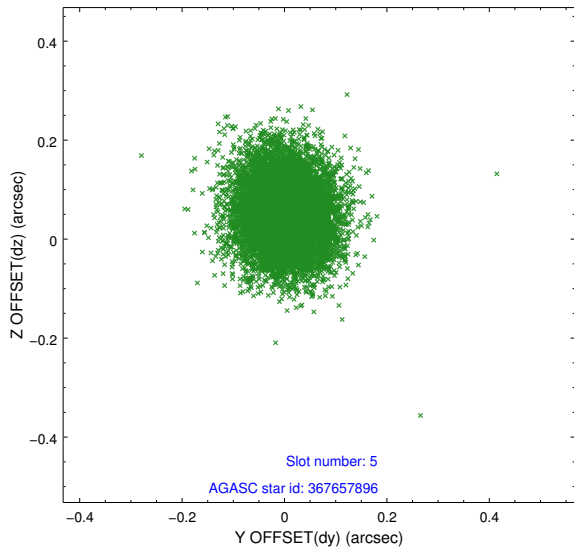
2.4.1 Slot 3



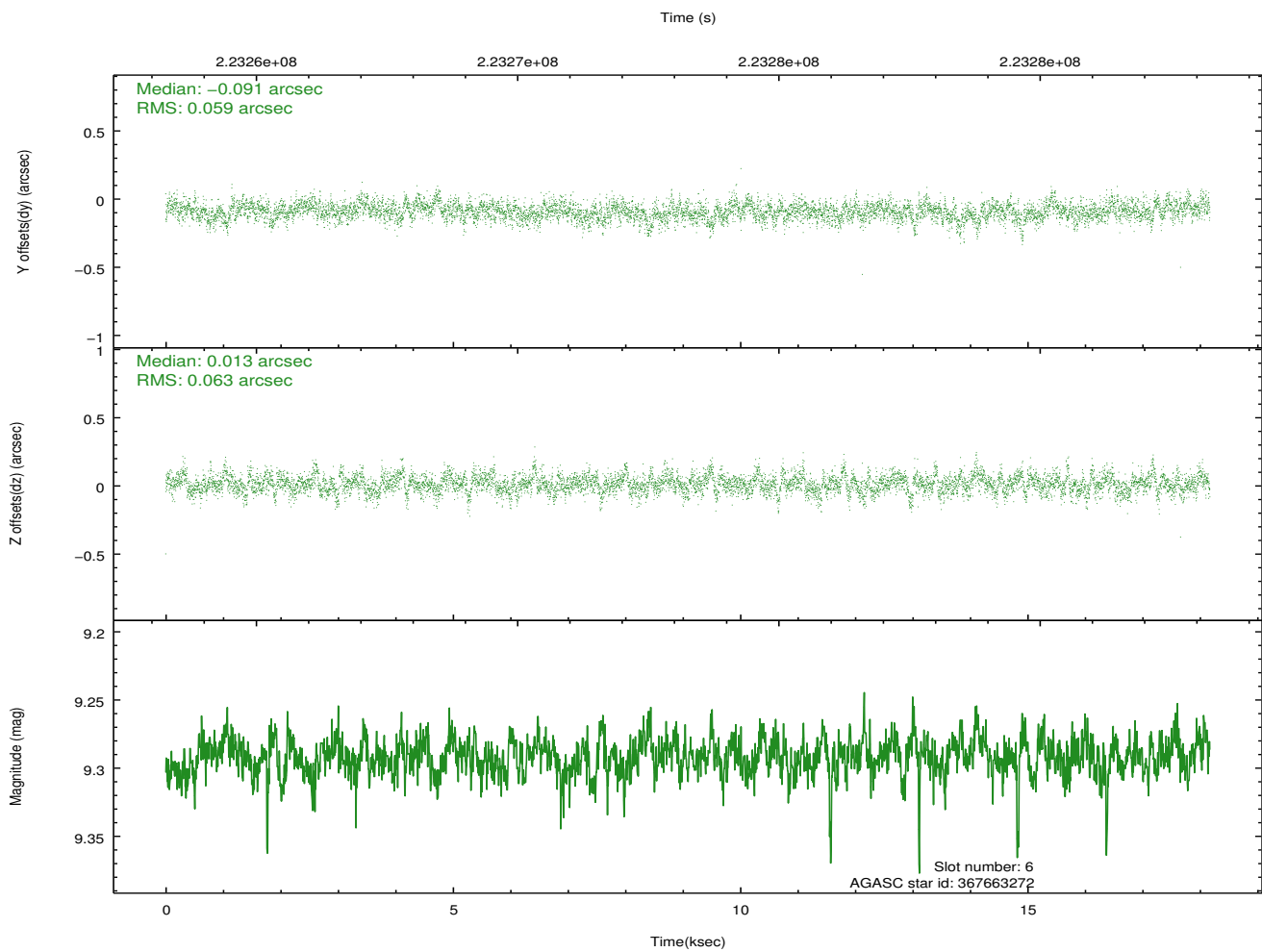
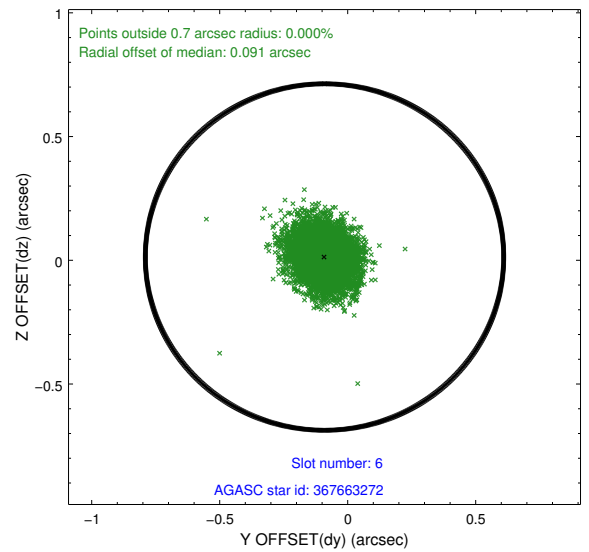
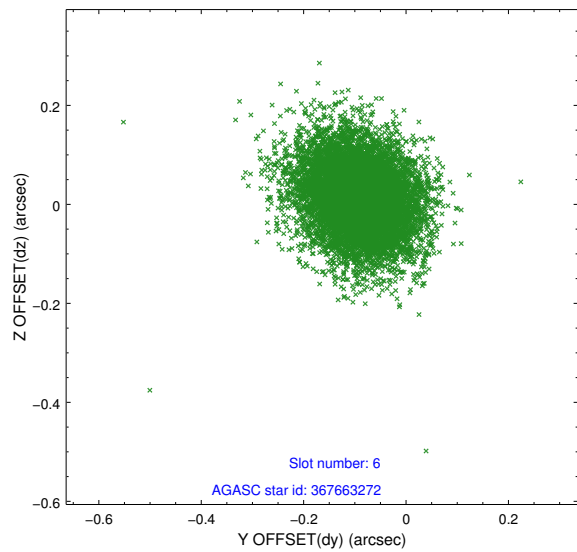
2.4.2 Slot 4



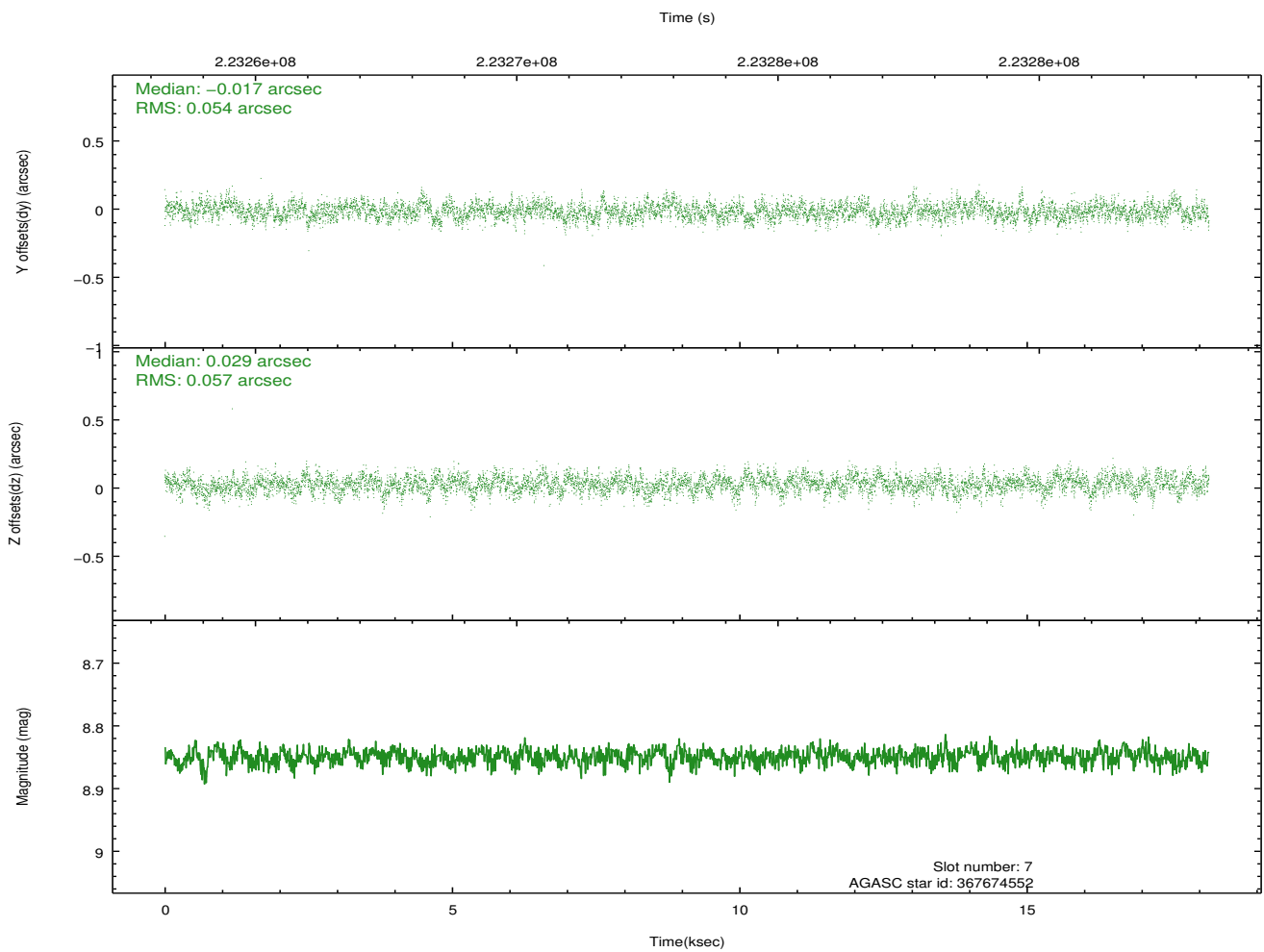
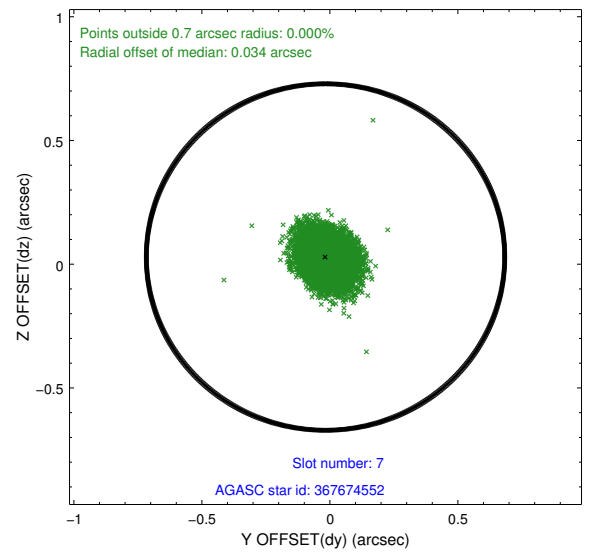
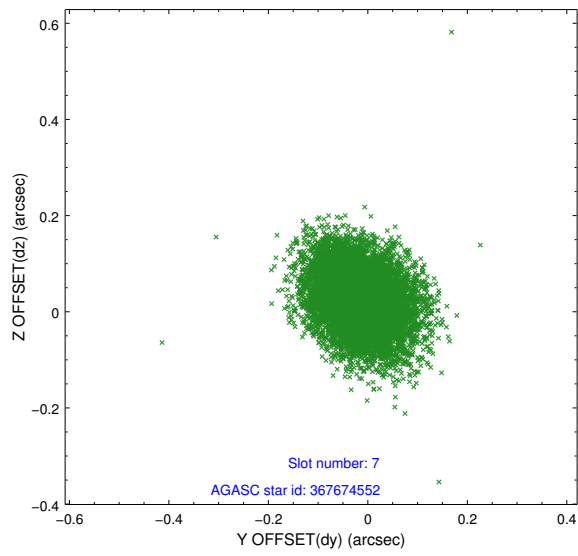
2.4.3 Slot 5



2.4.4 Slot 6

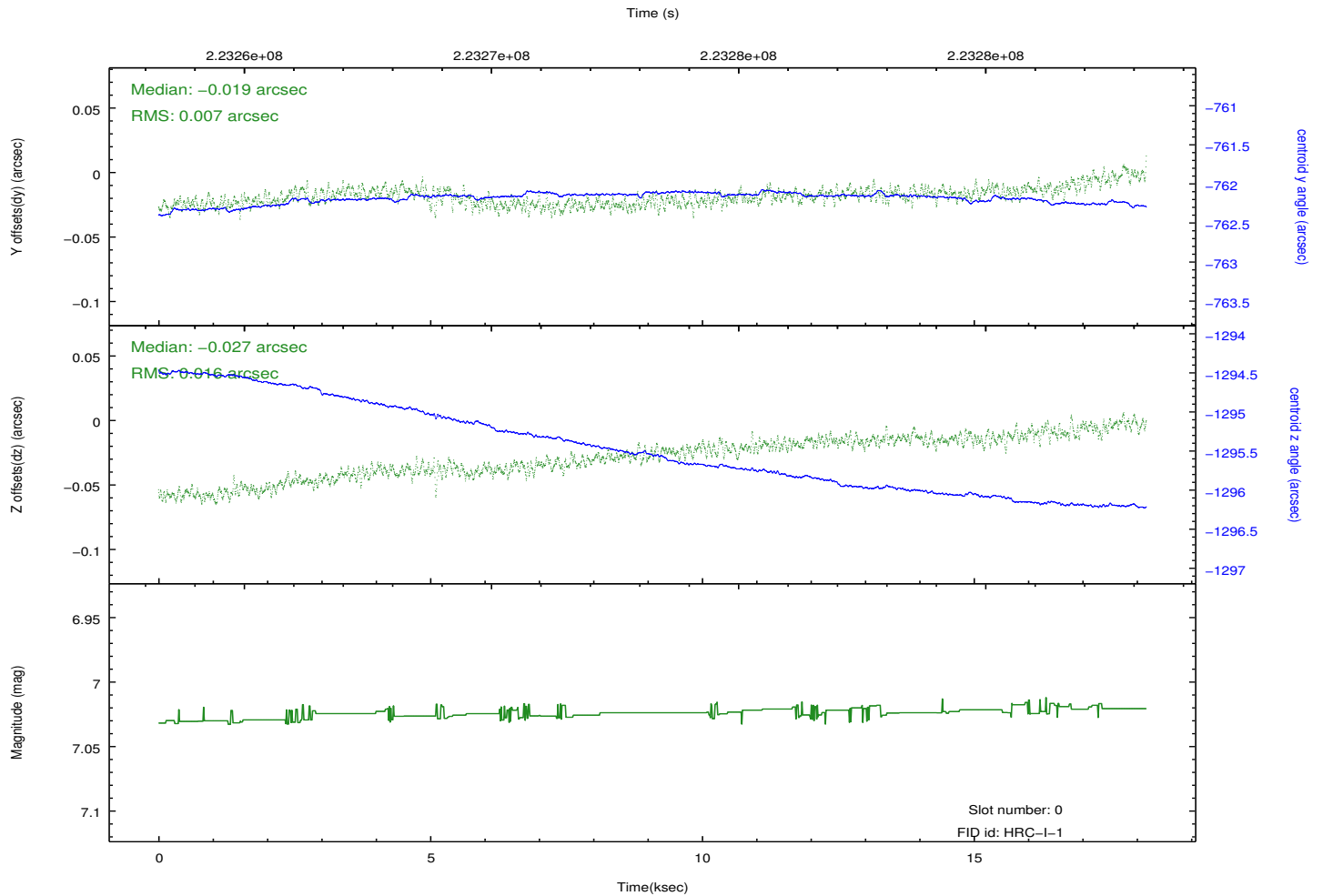
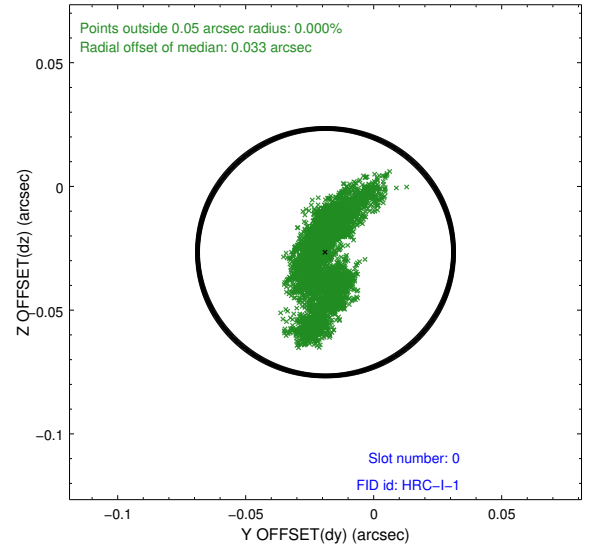
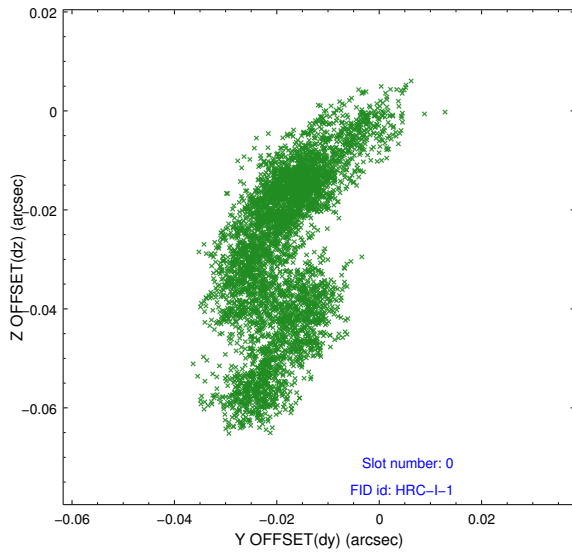


2.4.5 Slot 7

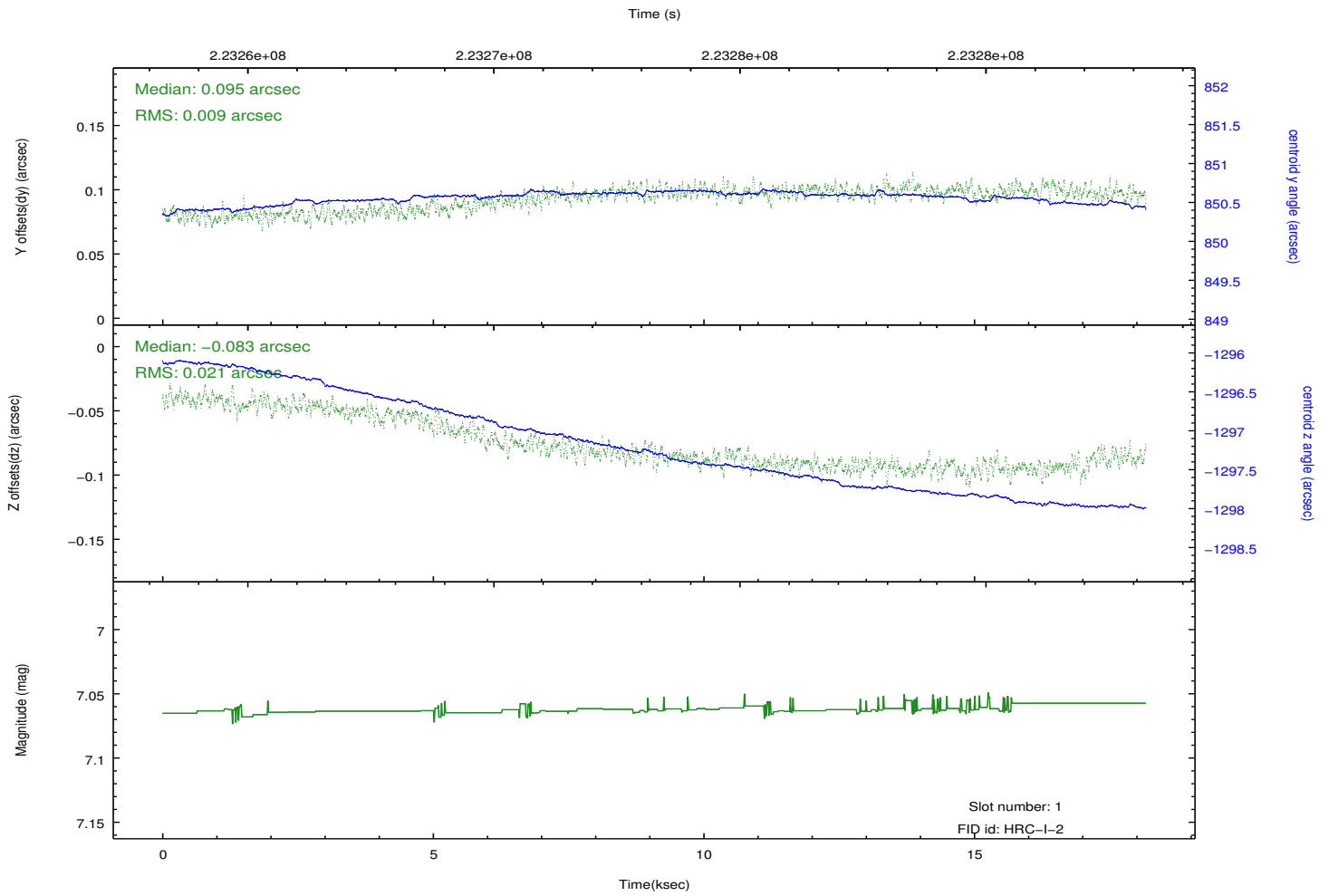
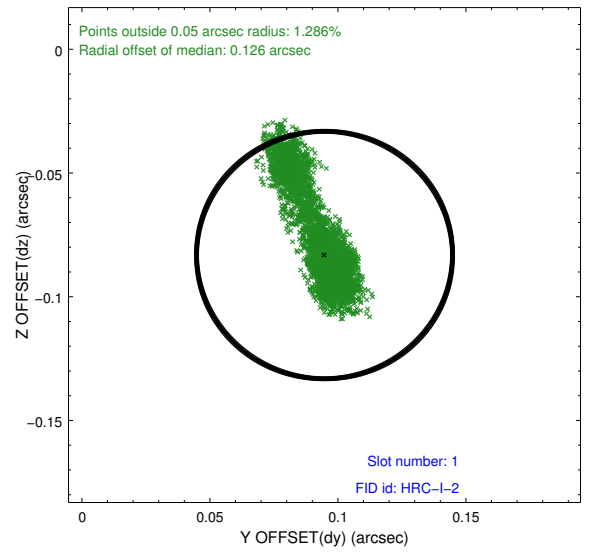
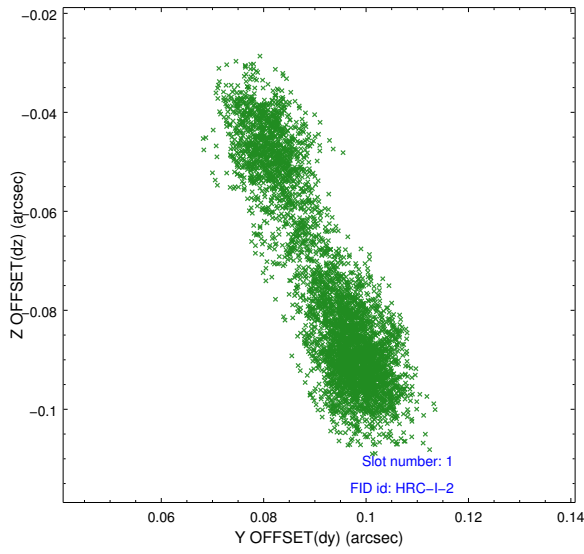


2.5 FID Slots

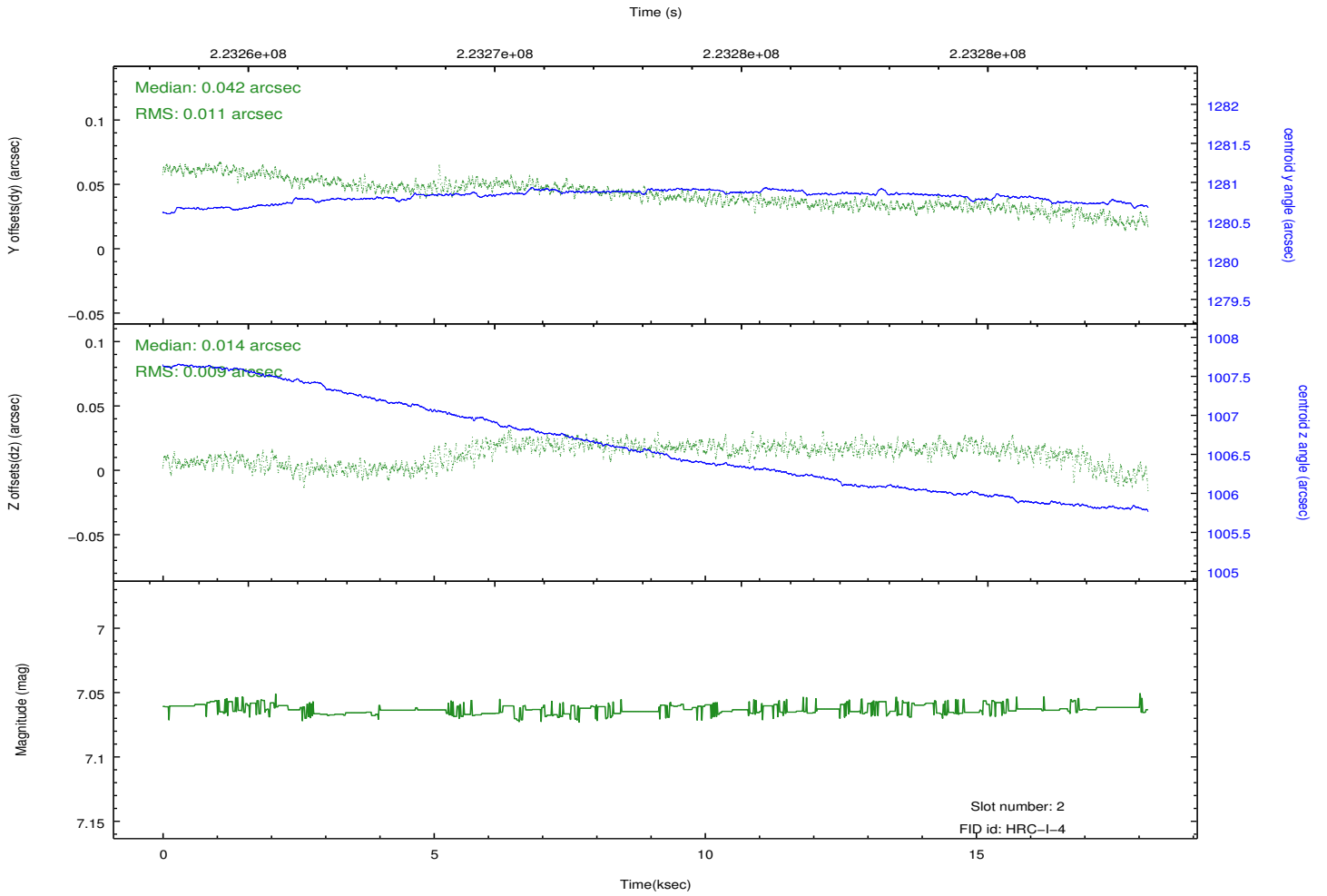
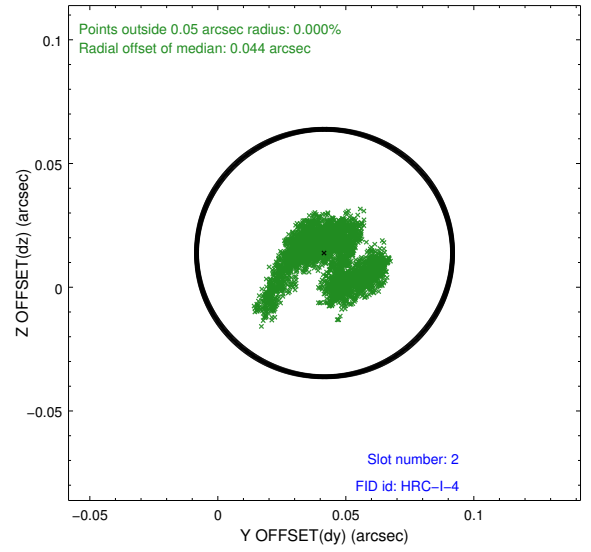
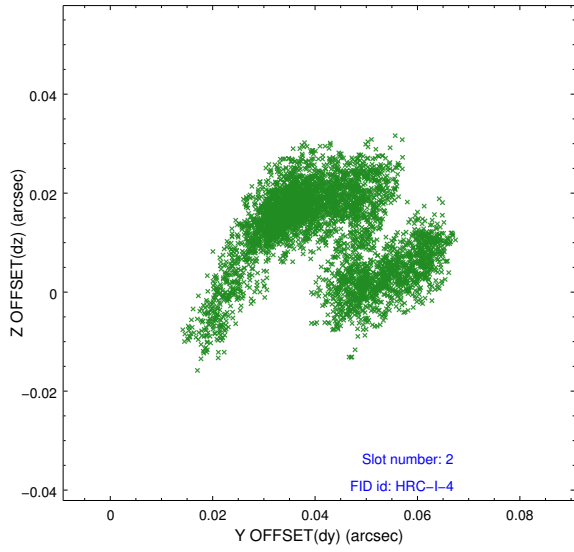
2.5.1 Slot 0



2.5.2 Slot 1



2.5.3 Slot 2



A Summary

A.1 Status

V&V Scientist	Beth Sundheim
V&V Date (YYYY-MM-DD)	2013.01.09
V&V Edition	1
V&V Disposition and Status	OK
V&V Charge Time	18.17043

A.2 Comments

Joint proposal with NRAO.