

V&V Reference Report

L2 ASCDS Version : 8.4.3

Observation 6232 - L2 Version 3
Chandra X-Ray Center

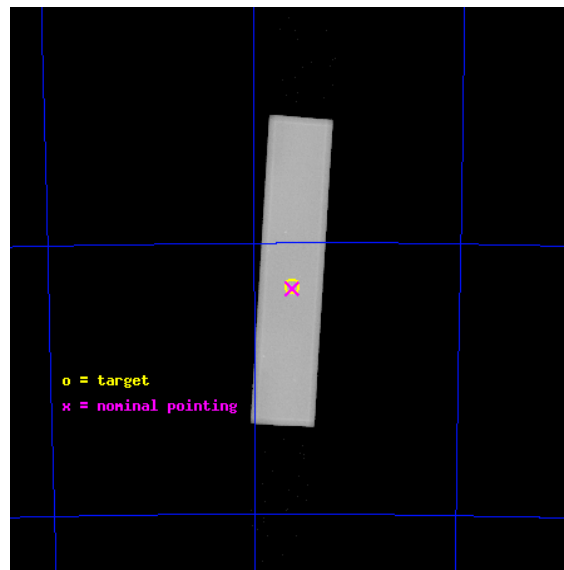
L2 Processing Date : Aug 11 2012

Contents

1	Front	2
2	OBI	3
2.1	OBI	3
2.1.1	Images	3
2.1.2	Parameters	4
2.1.3	Events	4
2.2	Compared Parameters	5
2.3	Aspect	6
2.4	Star Slots	9
2.4.1	Slot 3	9
2.4.2	Slot 4	10
2.4.3	Slot 5	11
2.4.4	Slot 6	12
2.4.5	Slot 7	13
2.5	FID Slots	14
2.5.1	Slot 0	14
2.5.2	Slot 1	15
2.5.3	Slot 2	16
A	Summary	17
A.1	Status	17
A.2	Comments	17

1 Front

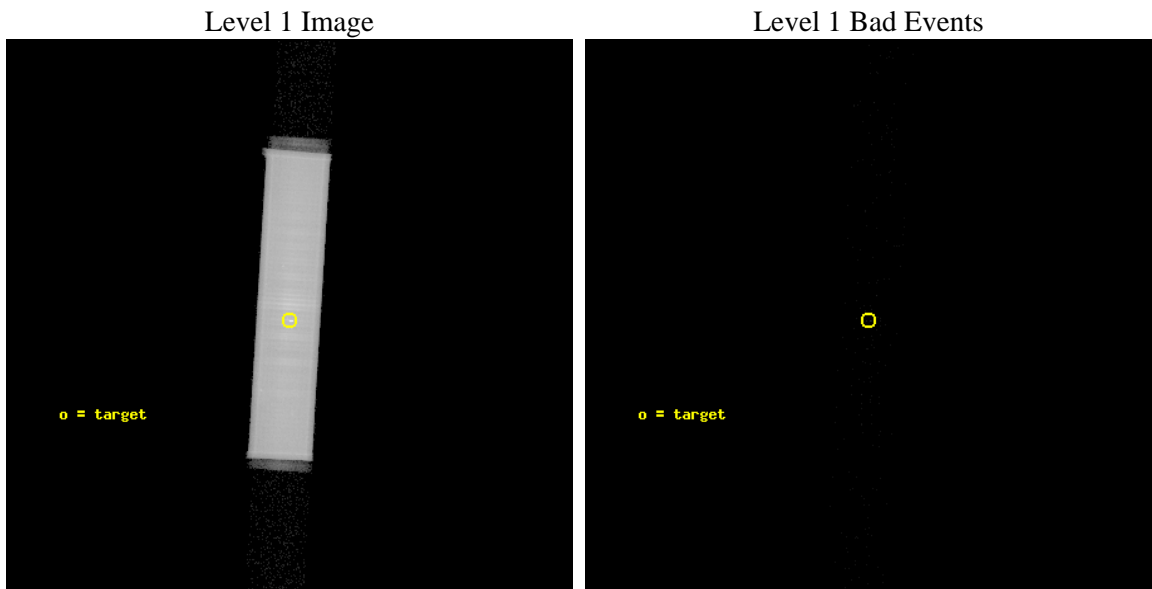
seq_num	500535	Sequence number
obs_id	6232	Observation id
title	Search for Sub-Millisecond Pulsars in 47 Tuc	Proposal title
observer	Prof. Robert Rutledge	Principal investigator
object	47 Tuc	Source name
ra_targ	6.021667	Observer's specified target RA [deg]
dec_targ	-72.080528	Observer's specified target Dec [deg]
ra_nom	6.0221600301865	Nominal RA [deg]
dec_nom	-72.085228803358	Nominal Dec [deg]
roll_nom	273.4576524043	Nominal Roll [deg]
revision	3	Processing version of data
ontime	44358.927054226	[s]
livetime	44146.310394166	Ontime multiplied by DTCOR
l2events	2178421	Number of level 2 events



2 OBI

2.1 OBI

2.1.1 Images



2.1.2 Parameters

obi_num	0	Obi number	sched_exp_time	45988.168000	[s] Scheduled observation exposure time
ascdsver	8.4.5	Processing system revision	ontime	44358.927054226	[s]
caldsver	4.5.1.1	 	l1events	3055264	Number of level 1 events
date	2012-08-10T22:32:55	Date and time of file creation			
revision	3	Processing version of data			

2.1.3 Events

Level 1 Events

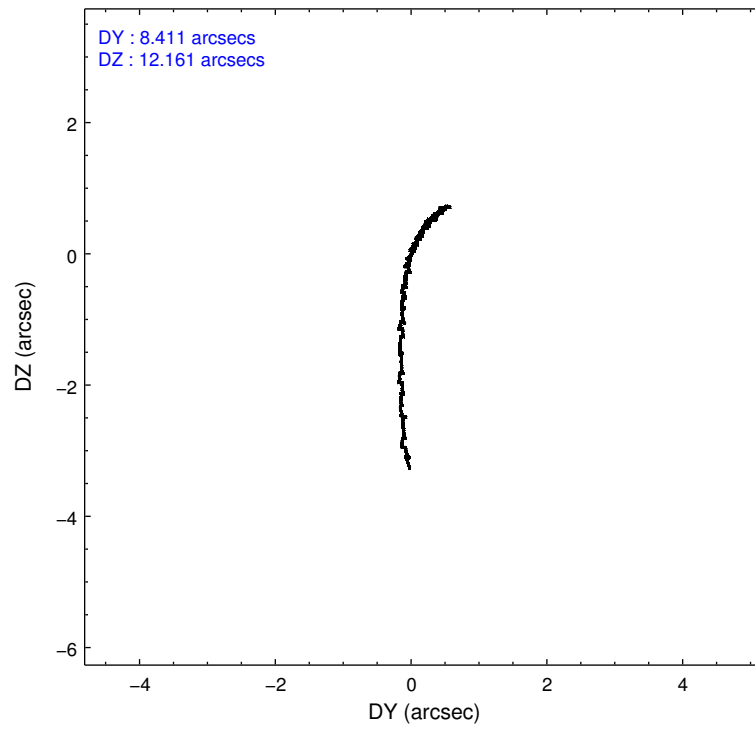
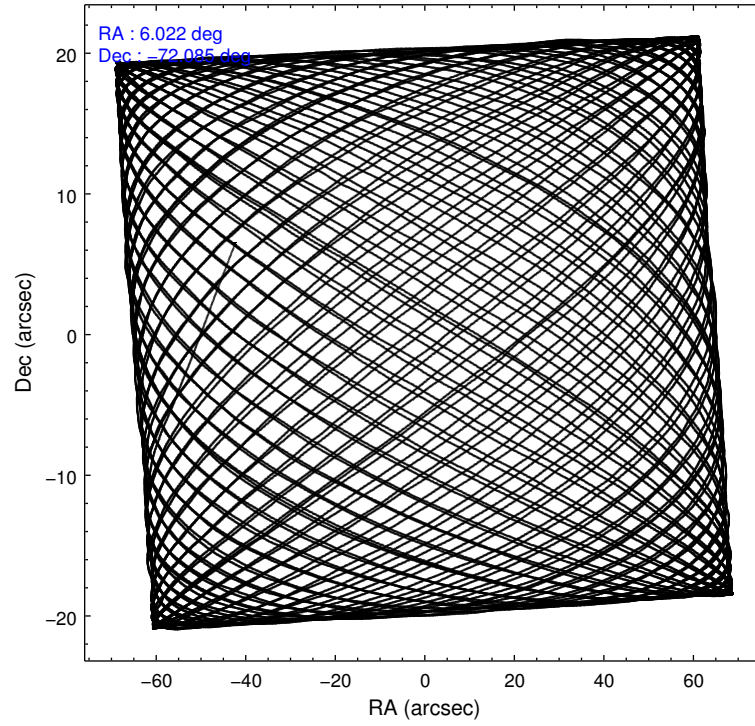
	segment 1	segment 2	segment 3
level 1 events	4906	3048850	1508
rejected events	1622	77477	1433
rejected %	33%	2%	95%

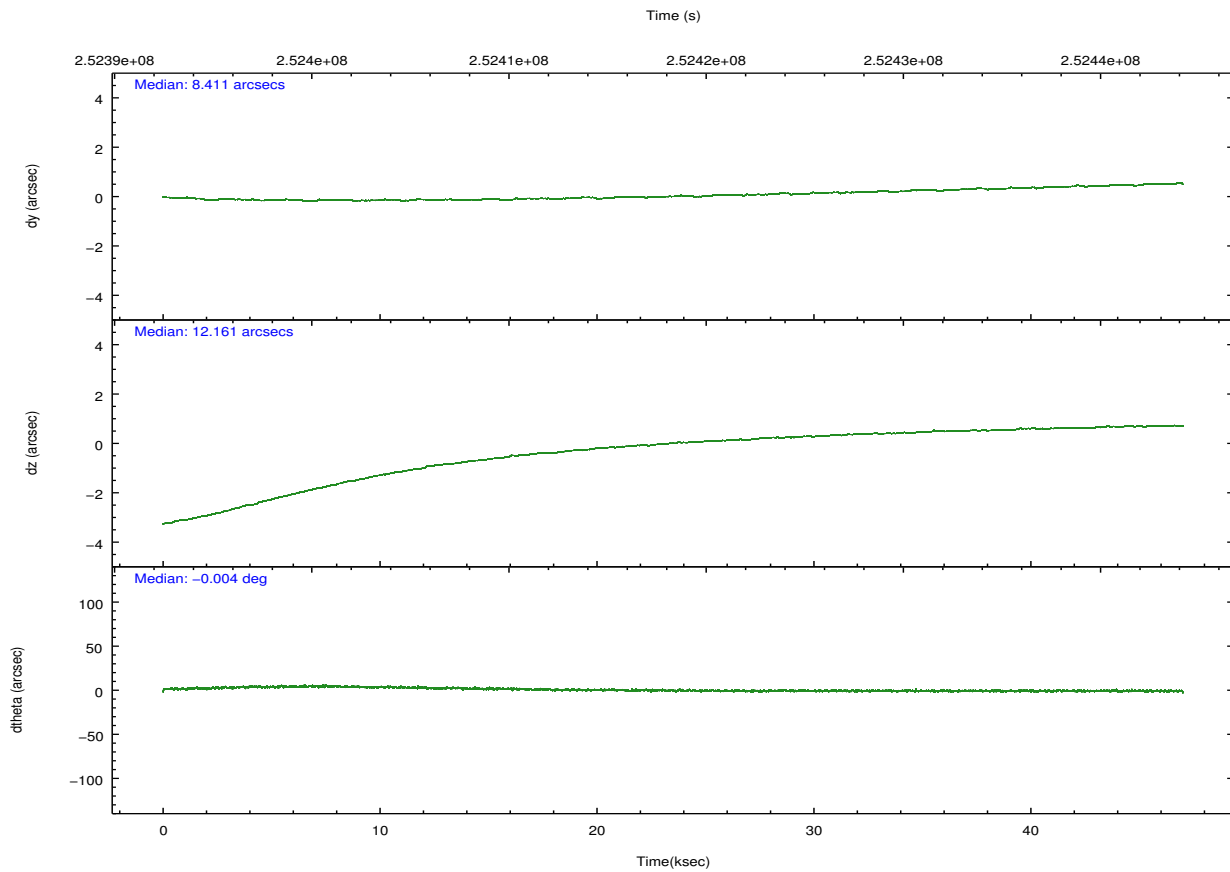
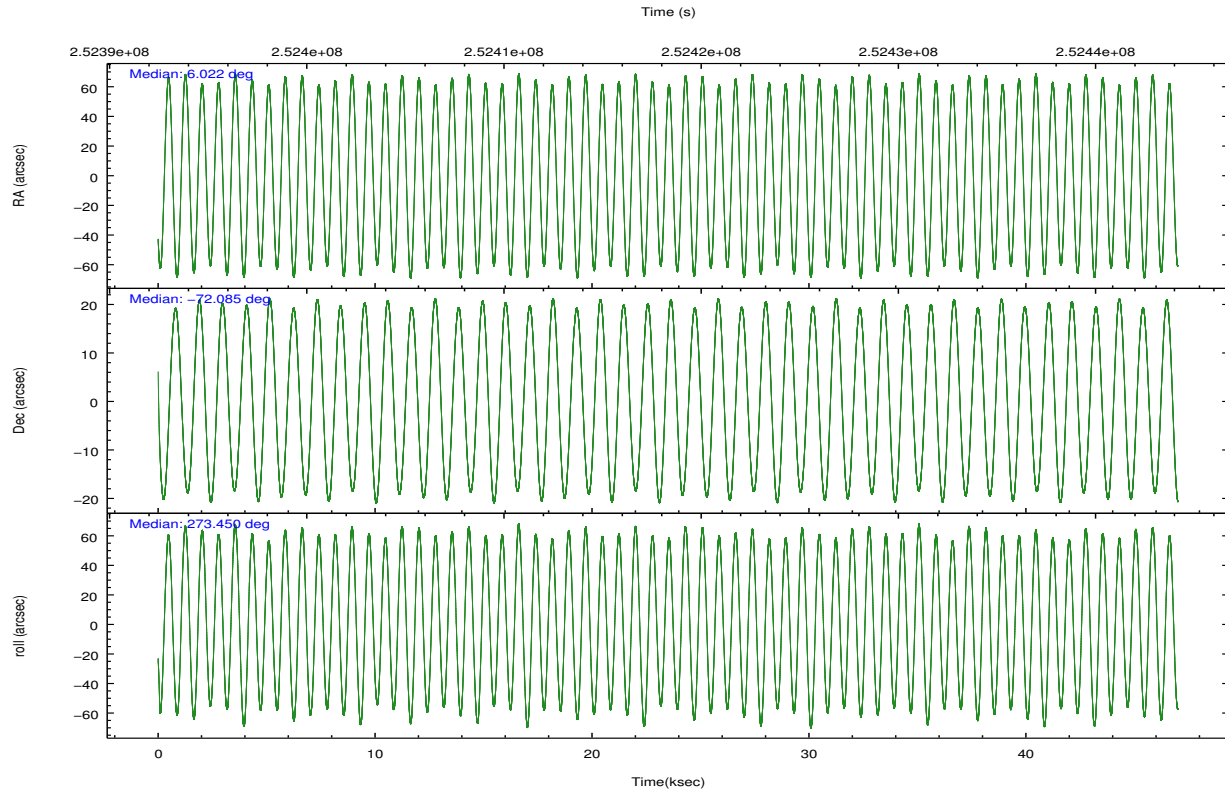
2.2 Compared Parameters

Parameter	Planned	Actual
Instrument	HRC	HRC
Detector	HRC-S	HRC-S
Grating	NONE	NONE
Data mode	OBSERVING	OBSERVING
Observation mode	POINTING	POINTING
[deg] Pointing RA	5.967186	6.022160030186541
[deg] Pointing Dec	-72.062148	-72.08522880335812
[deg] Pointing Roll	273.338000	273.4576524043003
[mm] SIM focus pos	-1.533336	-1.526339935833849
[mm] SIM defocus	7.710433287538843e-07	0.006996703570447904
[mm] SIM translation stage pos	250.455976	250.4635187648994
[mm] SIM translation stage offset	0	-0.007540371344731511
[s] Observation start time (MET)	252394936.184000	252393503.86283
Observation start date	2005-12-31T05:41:12	2005-12-31T05:18:23
[s] Observation end time (MET)	252440924.184000	252442742.81511
Observation end date	2005-12-31T18:27:40	2005-12-31T18:59:02

Parameter	Planned	Actual
Obspar format version number	7	7
Obspar file type	PREDICTED	ACTUAL
Obspar update status	NONE	UPDATED

2.3 Aspect



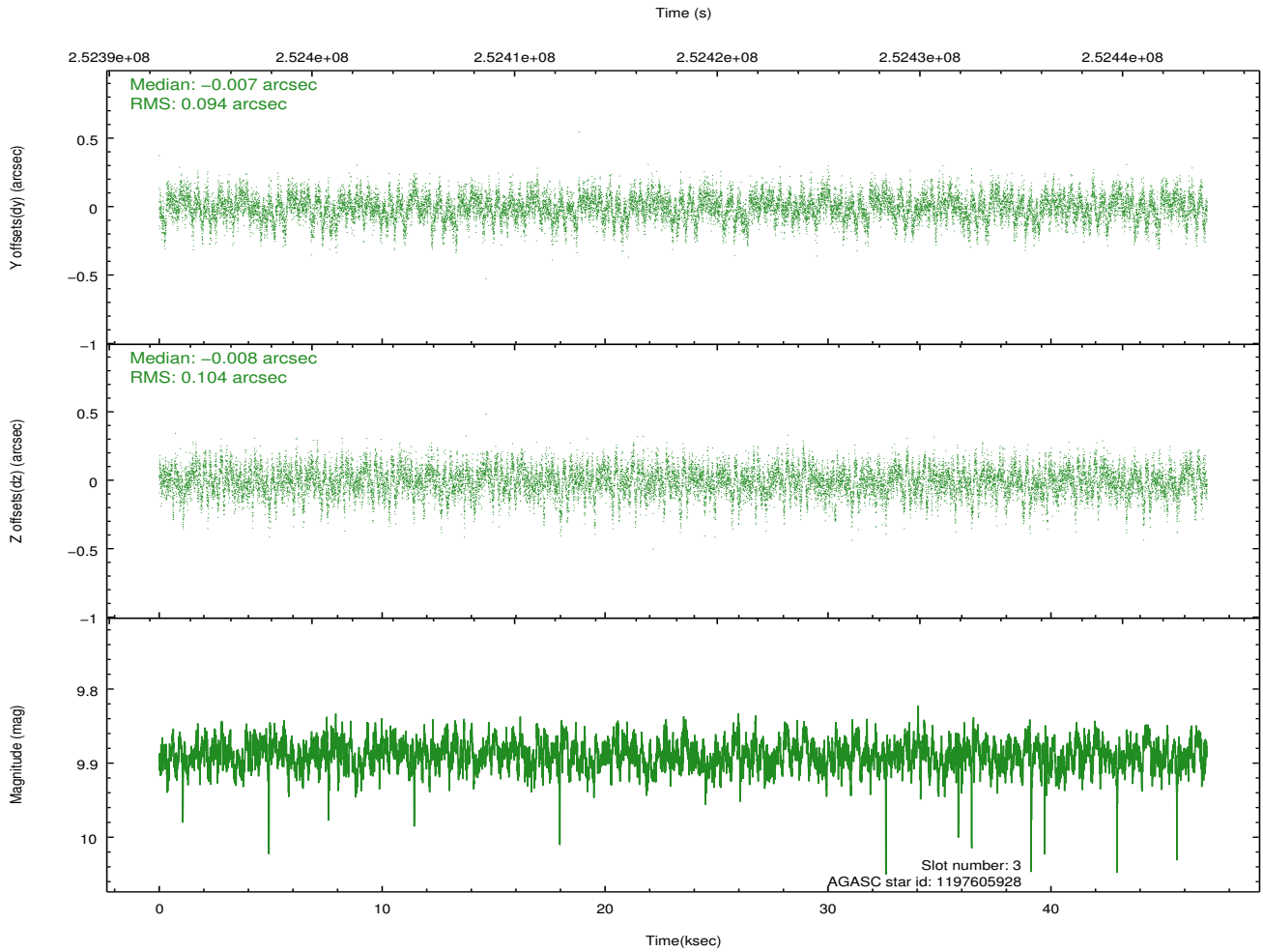
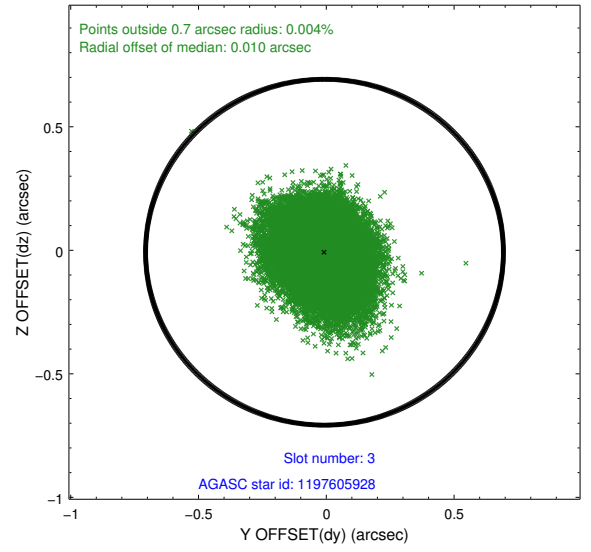
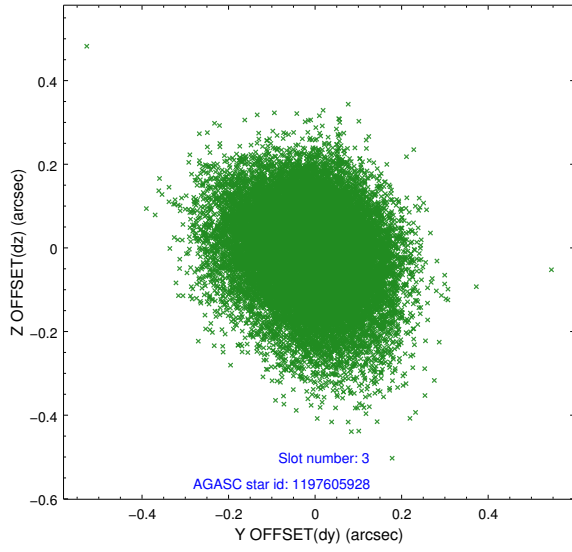


Slot Statistics

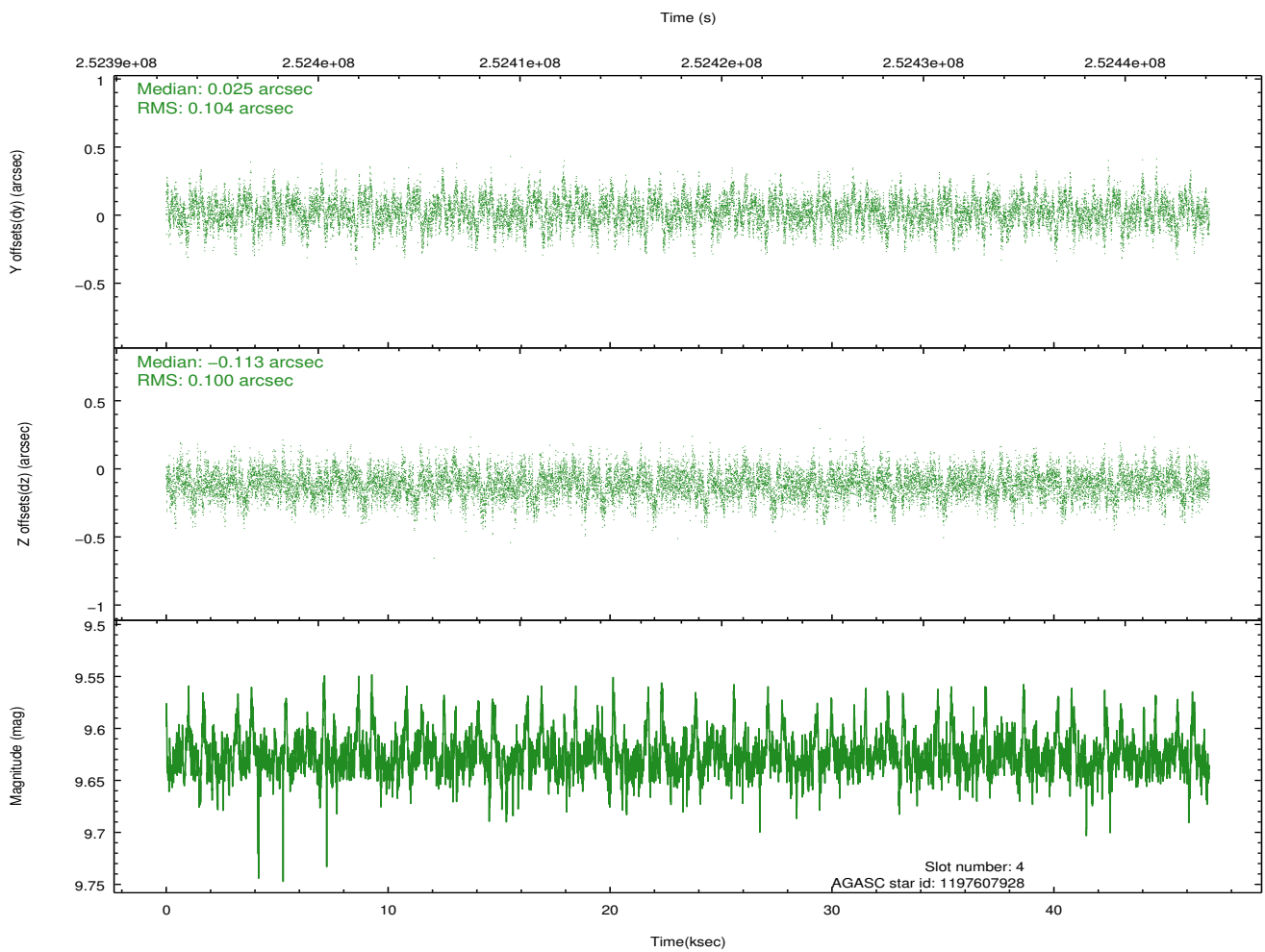
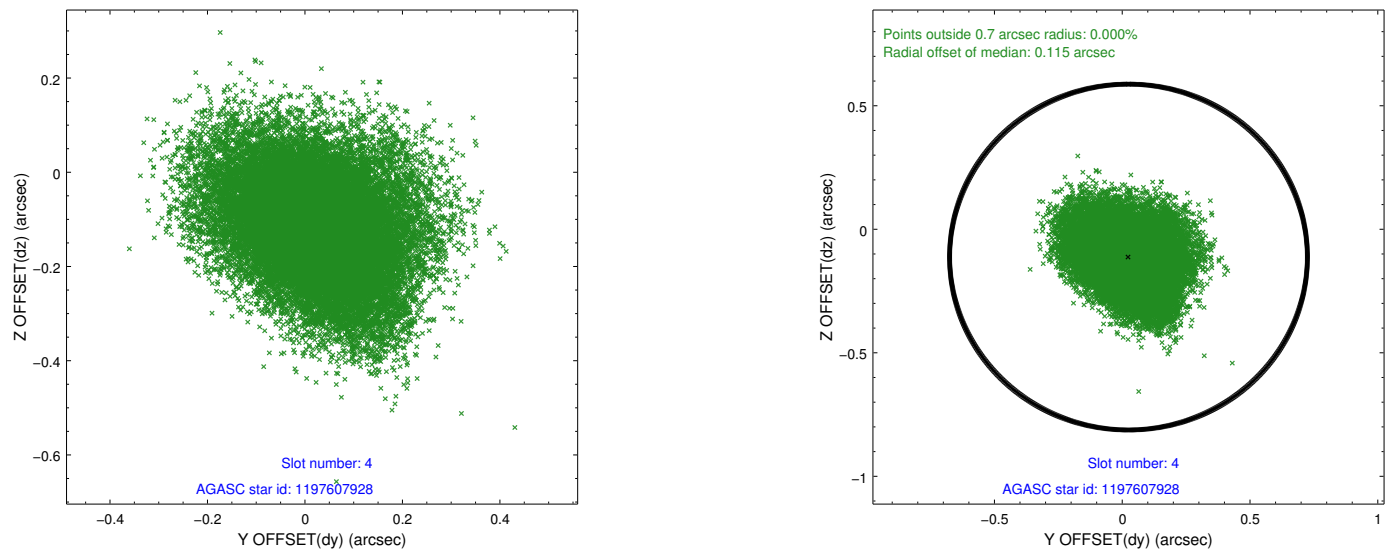
slot	status	id	mag	n_pts	med_dy	med_dz	dr1	dr2	ra	dec	mean_y	mean_z
0	FID	HRC-S-1	7.00	11465	0.142	-0.122	0.019	0.070	0.000000	0.000000	-1162.64	-460.41
1	FID	HRC-S-2	7.00	11465	0.138	-0.109	0.013	0.020	0.000000	0.000000	1236.91	-453.05
2	FID	HRC-S-3	7.01	11465	0.111	-0.074	0.026	0.082	0.000000	0.000000	-1165.29	569.15
3	GUIDE	1197605928	9.89	22870	-0.007	-0.008	0.148	0.244	4.361277	-72.423732	1221.81	-1819.43
4	GUIDE	1197607928	9.63	22906	0.025	-0.113	0.152	0.255	7.837743	-72.165759	524.53	2035.21
5	GUIDE	1197620848	10.04	22900	0.052	-0.046	0.183	0.297	3.913465	-71.739620	-1254.07	-2247.02
6	GUIDE	1197617752	10.28	22899	0.027	0.216	0.182	0.289	4.480632	-72.284129	723.58	-1672.86
7	GUIDE	1197621088	9.90	22870	-0.086	-0.044	0.171	0.286	3.823480	-72.180366	330.04	-2383.14

2.4 Star Slots

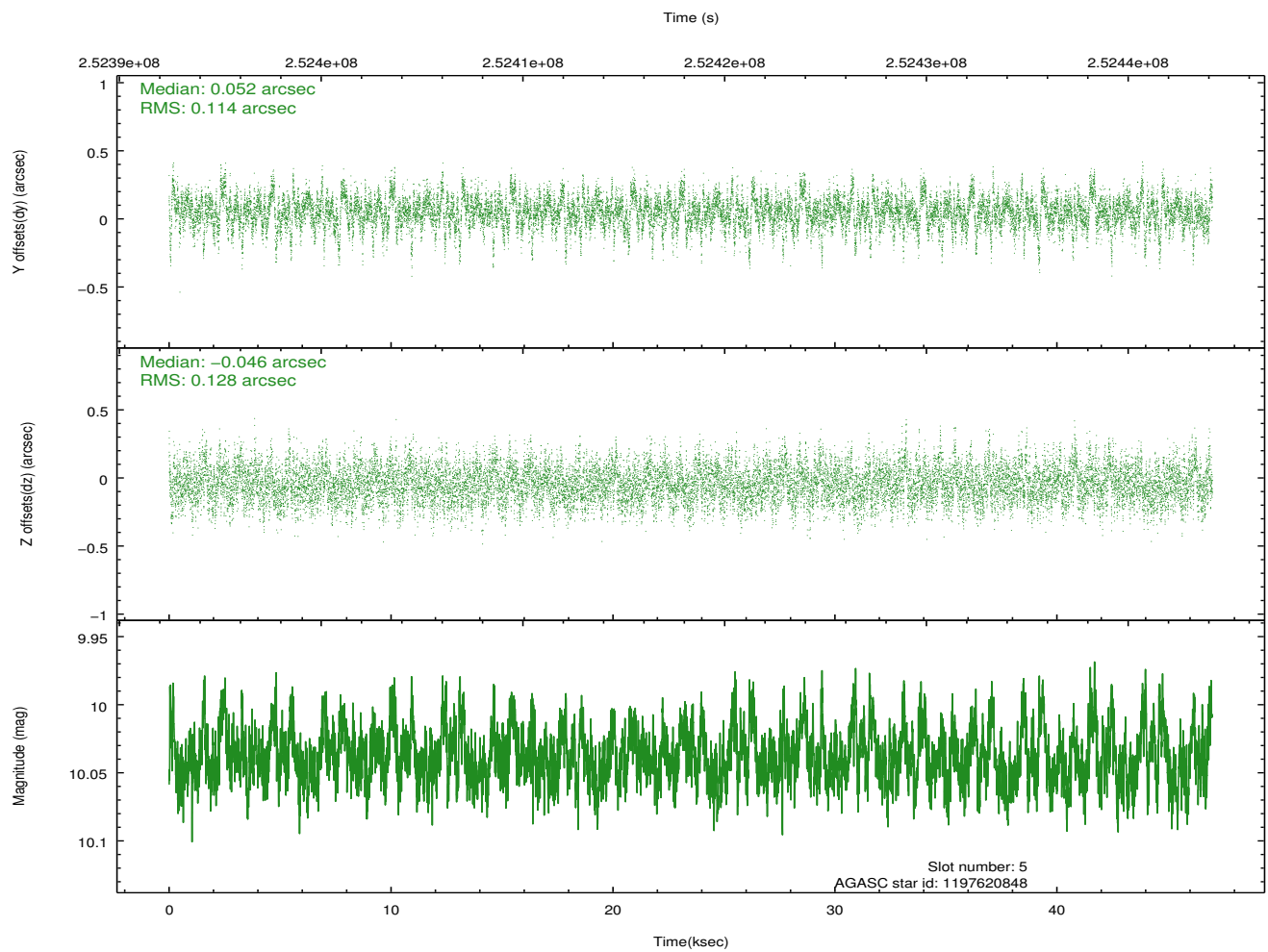
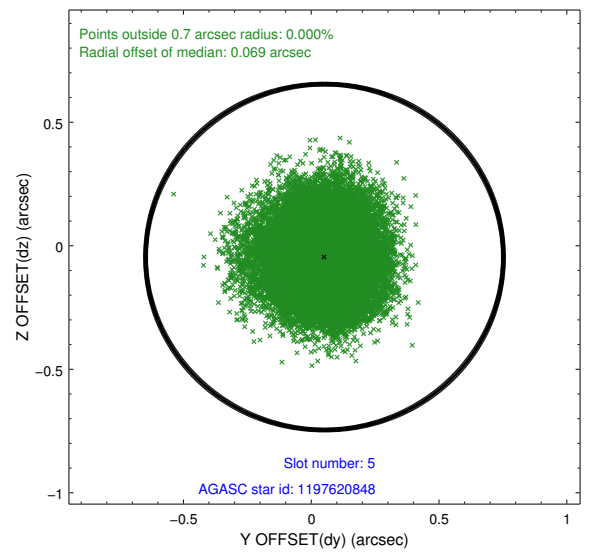
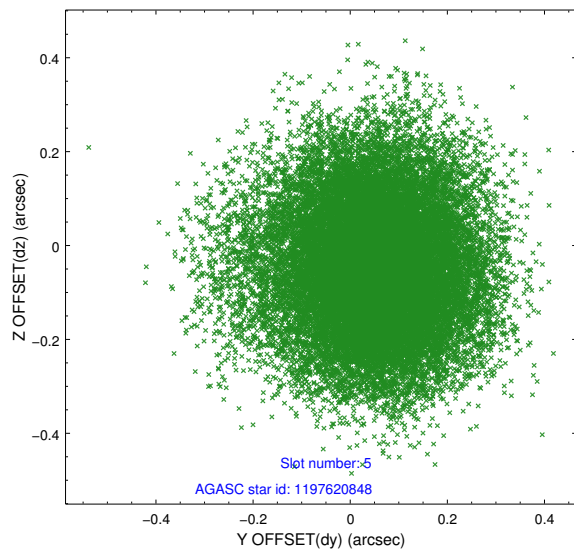
2.4.1 Slot 3



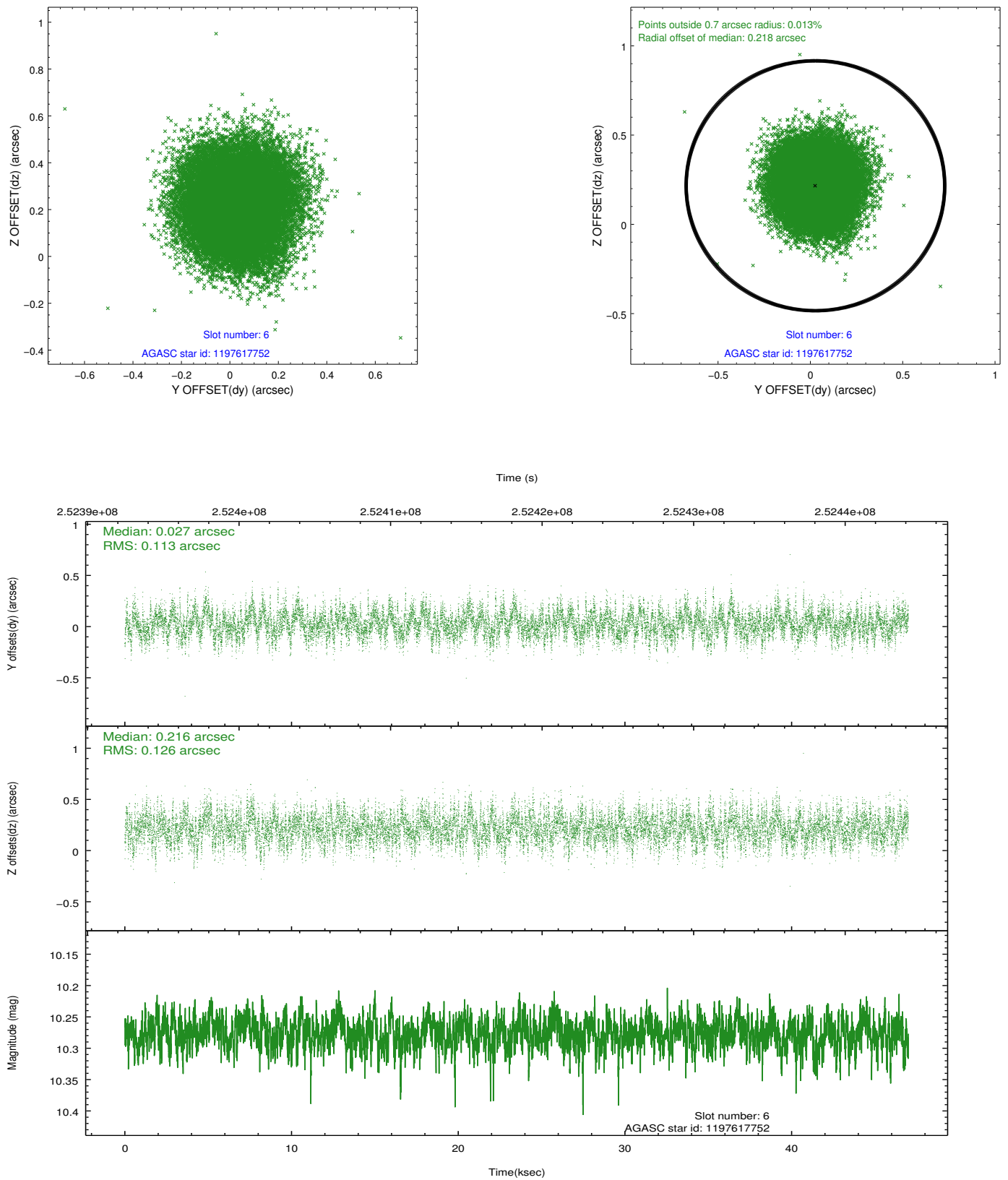
2.4.2 Slot 4



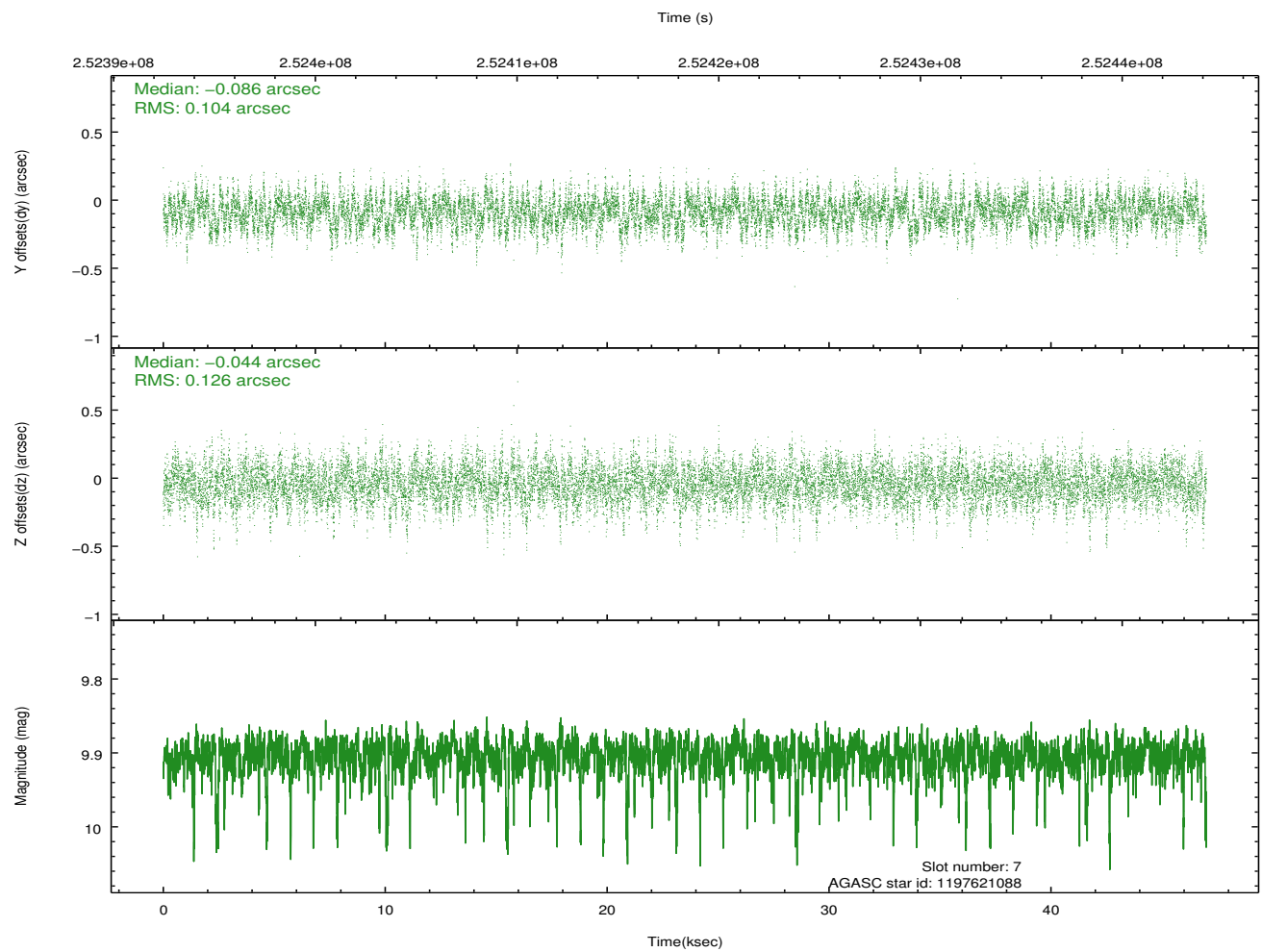
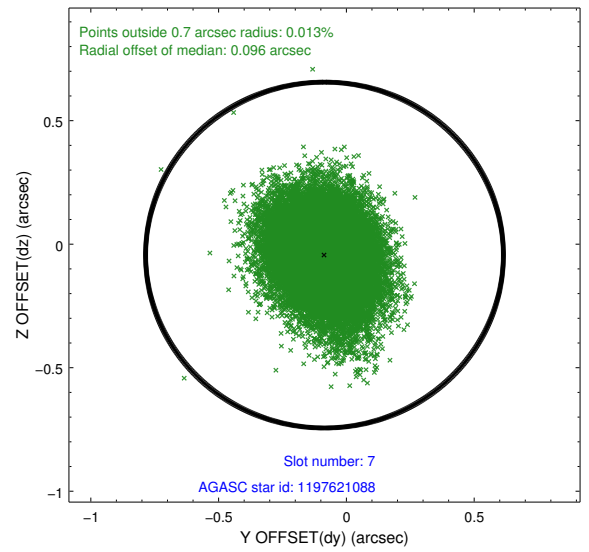
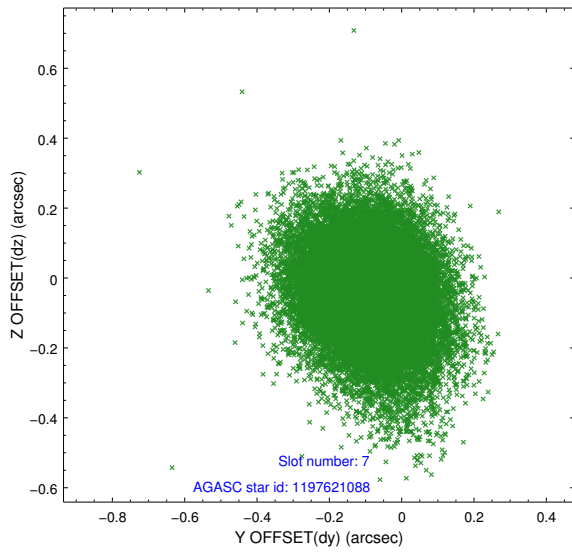
2.4.3 Slot 5



2.4.4 Slot 6

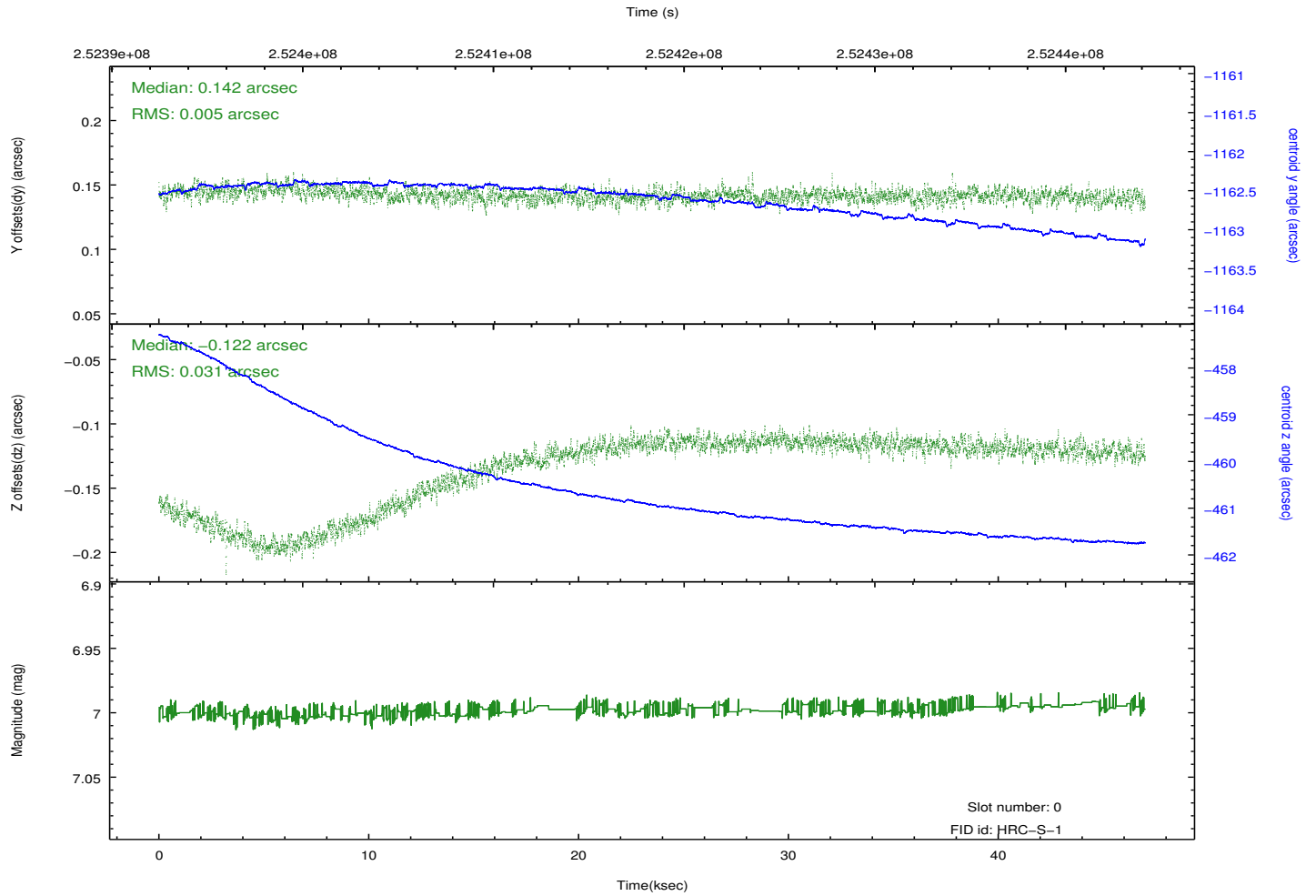
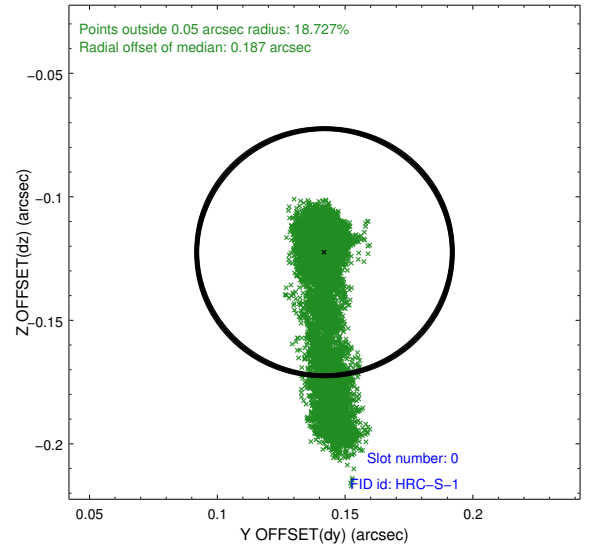
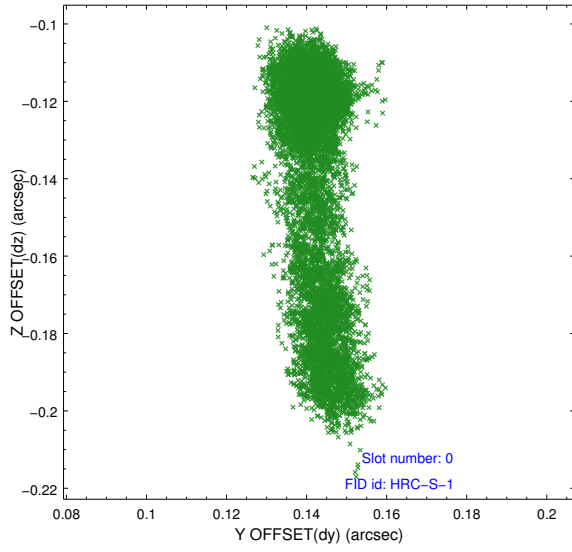


2.4.5 Slot 7

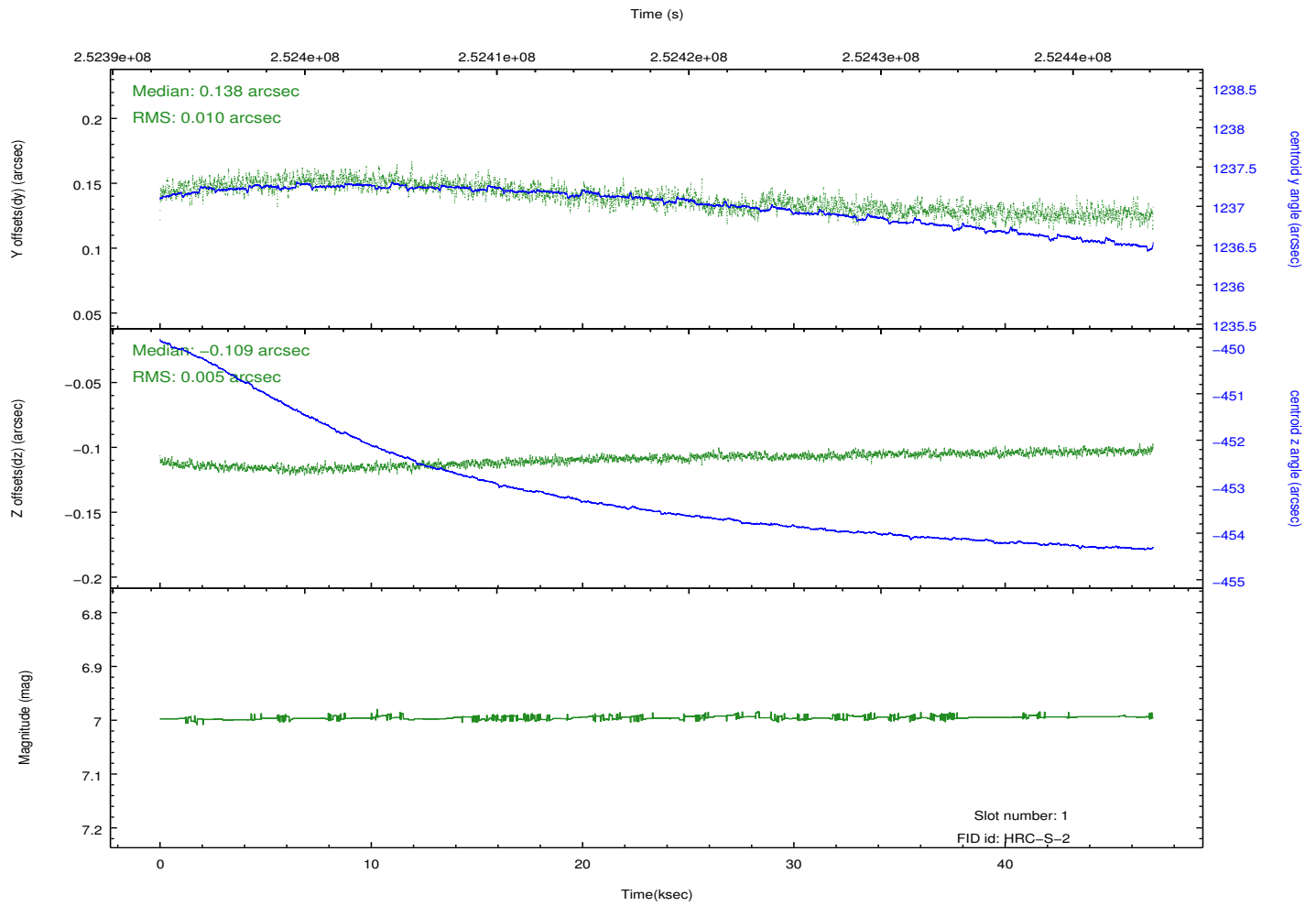
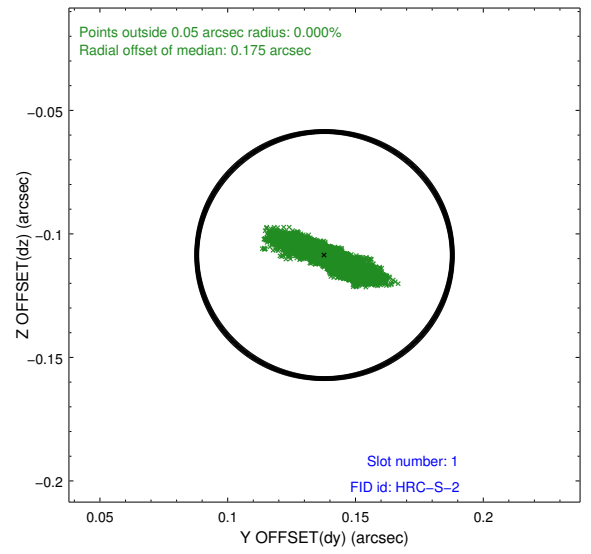
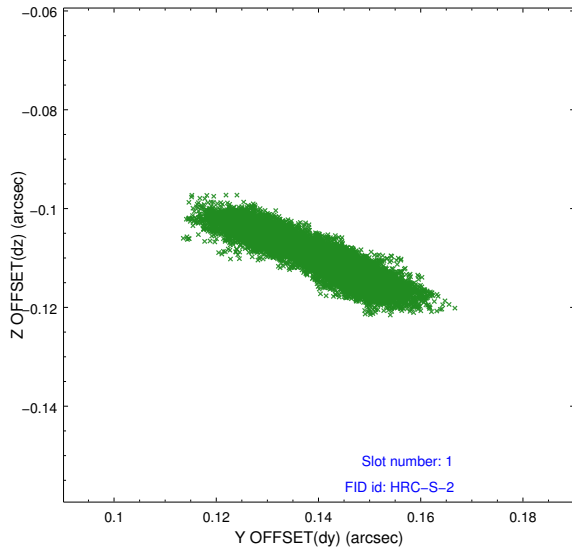


2.5 FID Slots

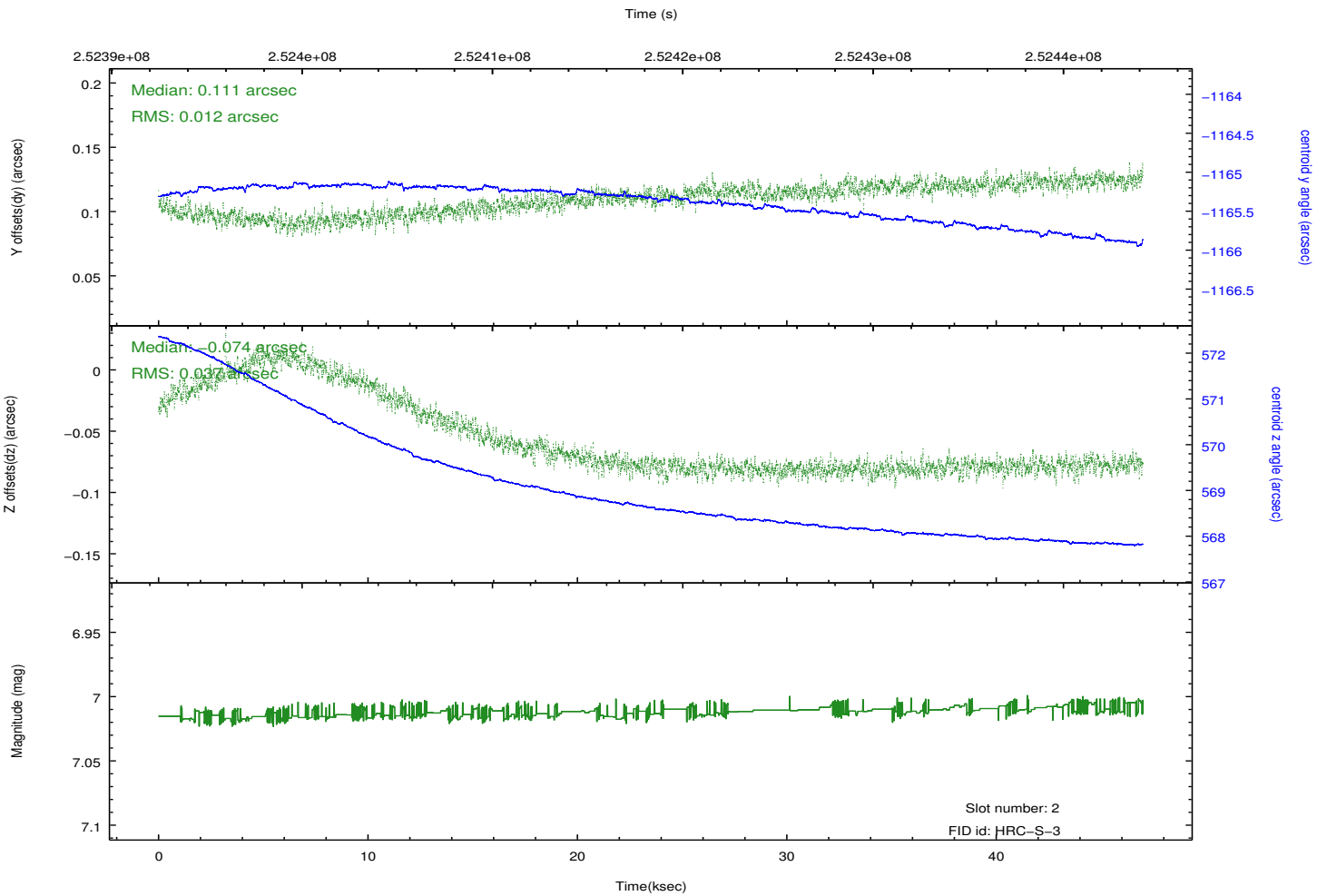
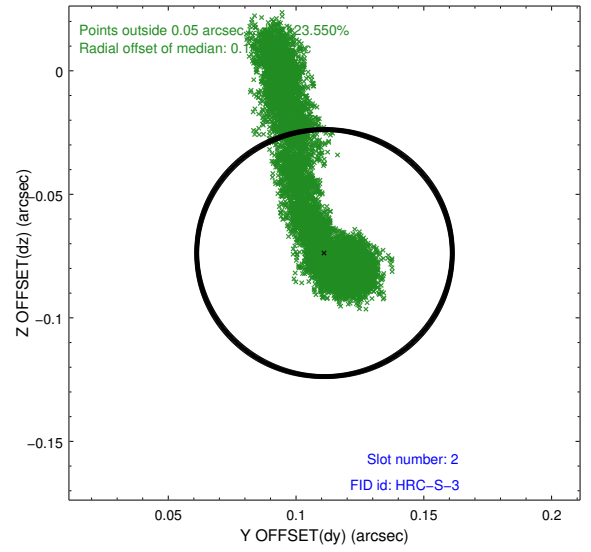
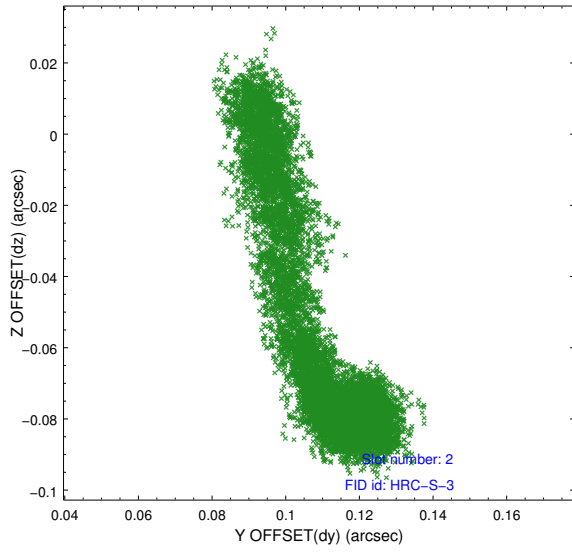
2.5.1 Slot 0



2.5.2 Slot 1



2.5.3 Slot 2



A Summary

A.1 Status

V&V Scientist	Jen Lauer
V&V Date (YYYY-MM-DD)	2012.08.12
V&V Edition	1
V&V Disposition and Status	OK
V&V Charge Time	44.35918

A.2 Comments

SIM dz varies by more than 3 arcsec during observation. First 10 ksec has 0.1 arcsec deviation in fig light slots 0 and 2. Neither of these deviations are expected to affect aspect solution. One spike in counts per sec at about 30 ksec into the observation. However, count rate shows variations during first 27 ksec between 60 and 100 counts/s which was not seen in other 47 Tuc observations.