

V&V Reference Report

L2 ASCDS Version : 10.9.1

Observation 6232 - L2 Version 5
Chandra X-Ray Center

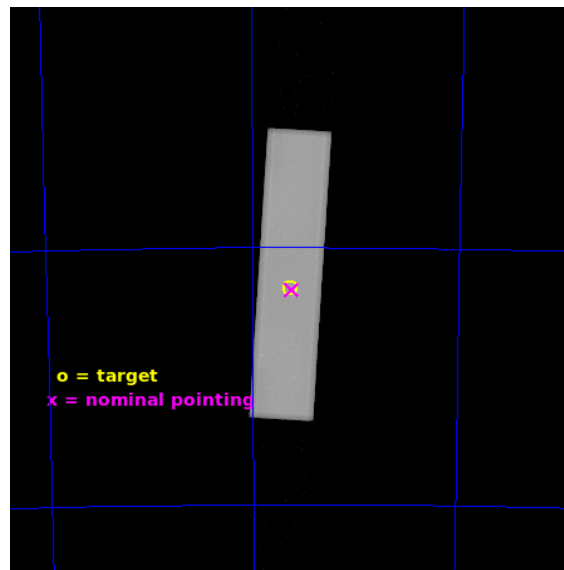
L2 Processing Date : Oct 12 2020

Contents

1	Front	2
2	OBI	3
2.1	OBI	3
2.1.1	Images	3
2.1.2	Parameters	4
2.1.3	Events	4
2.2	Compared Parameters	5
2.3	Aspect	6
2.4	Star Slots	9
2.4.1	Slot 3	9
2.4.2	Slot 4	10
2.4.3	Slot 5	11
2.4.4	Slot 6	12
2.4.5	Slot 7	13
2.5	FID Slots	14
2.5.1	Slot 0	14
2.5.2	Slot 1	15
2.5.3	Slot 2	16
A	Summary	17
A.1	Status	17
A.2	Comments	17

1 Front

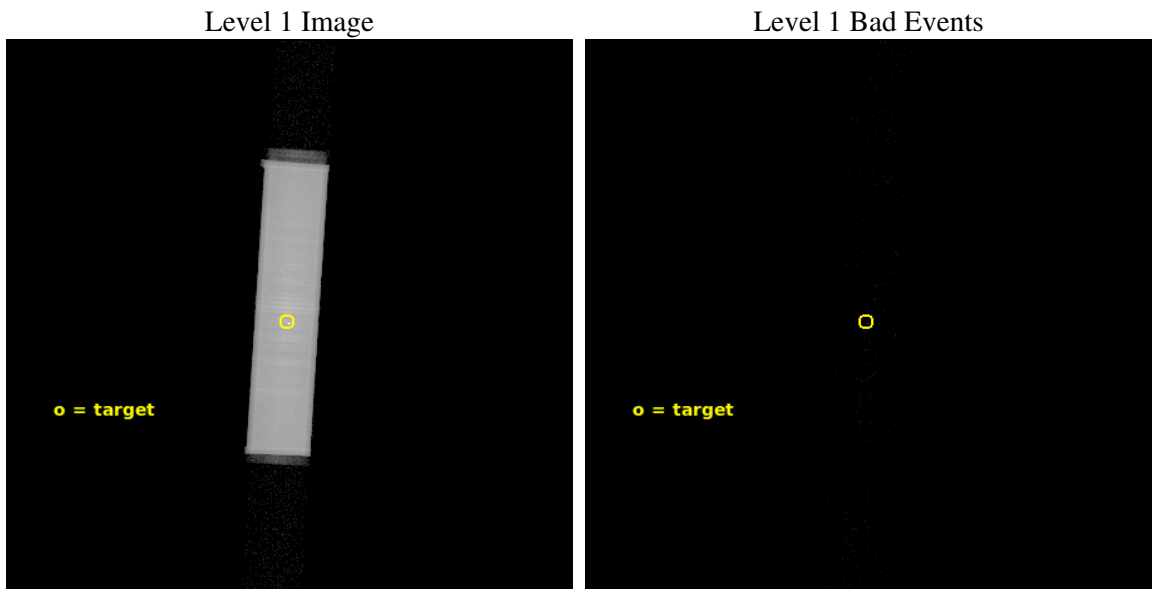
seq_num	500535	Sequence number
obs_id	6232	Observation id
title	Search for Sub-Millisecond Pulsars in 47 Tuc	Proposal title
observer	Prof. Robert Rutledge	Principal investigator
object	47 Tuc	Source name
ra_targ	6.021667	Observer's specified target RA [deg]
dec_targ	-72.080528	Observer's specified target Dec [deg]
ra_nom	6.0107607883366	Nominal RA [deg]
dec_nom	-72.0829492945	Nominal Dec [deg]
roll_nom	273.45483599905	Nominal Roll [deg]
revision	5	Processing version of data
ontime	44358.927054226	[s]
livetime	44146.310394166	Ontime multiplied by DTCOR
l2events	2138997	Number of level 2 events



2 OBI

2.1 OBI

2.1.1 Images



2.1.2 Parameters

obi_num	0	Obi number	sched_exp_time	45988.168000	[s] Scheduled observation exposure time
ascdsver	10.9.1	Processing system revision	ontime	44358.927054226	[s]
caldbver	4.9.2	 	l1events	3055264	Number of level 1 events
date	2020-10-12T07:37:44	Date and time of file creation			
revision	5	Processing version of data			

2.1.3 Events

Level 1 Events

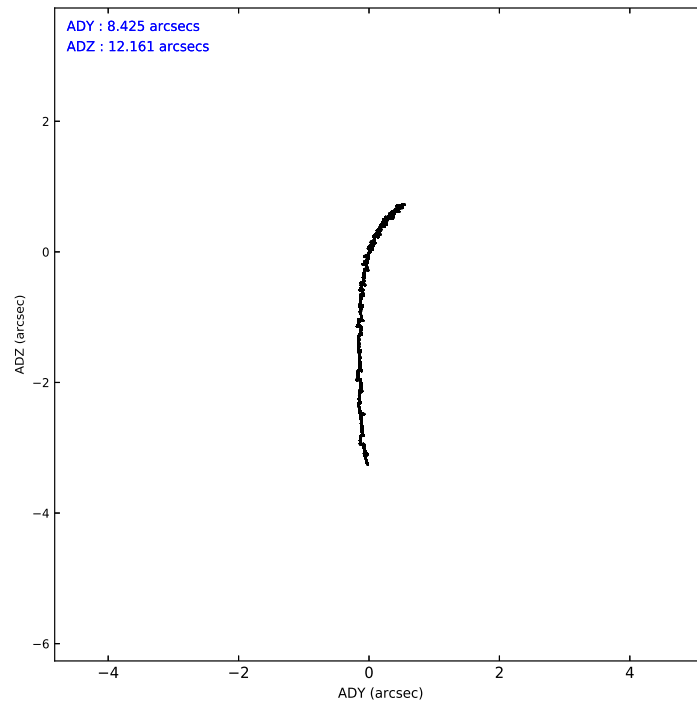
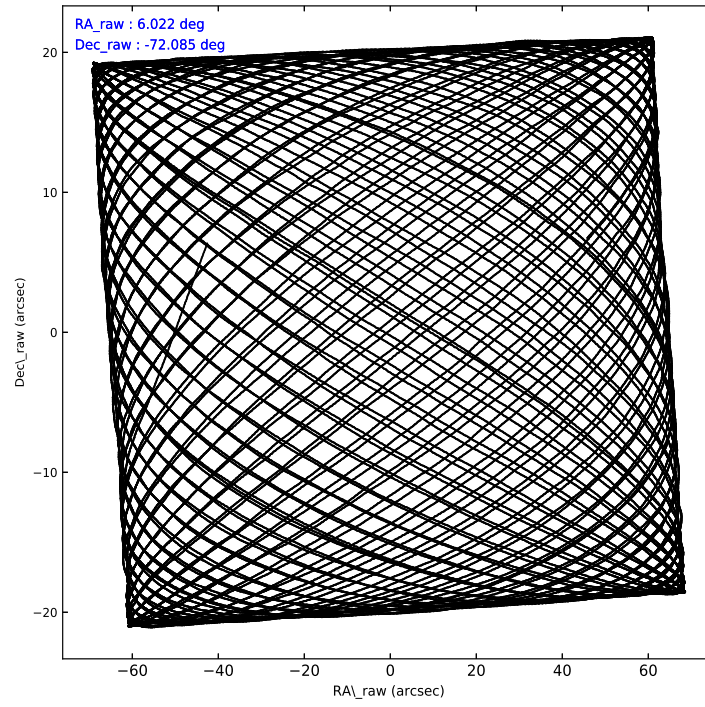
	segment 1	segment 2	segment 3
level 1 events	5523	3047061	2680
rejected events	1635	77434	1463
rejected %	29%	2%	54%

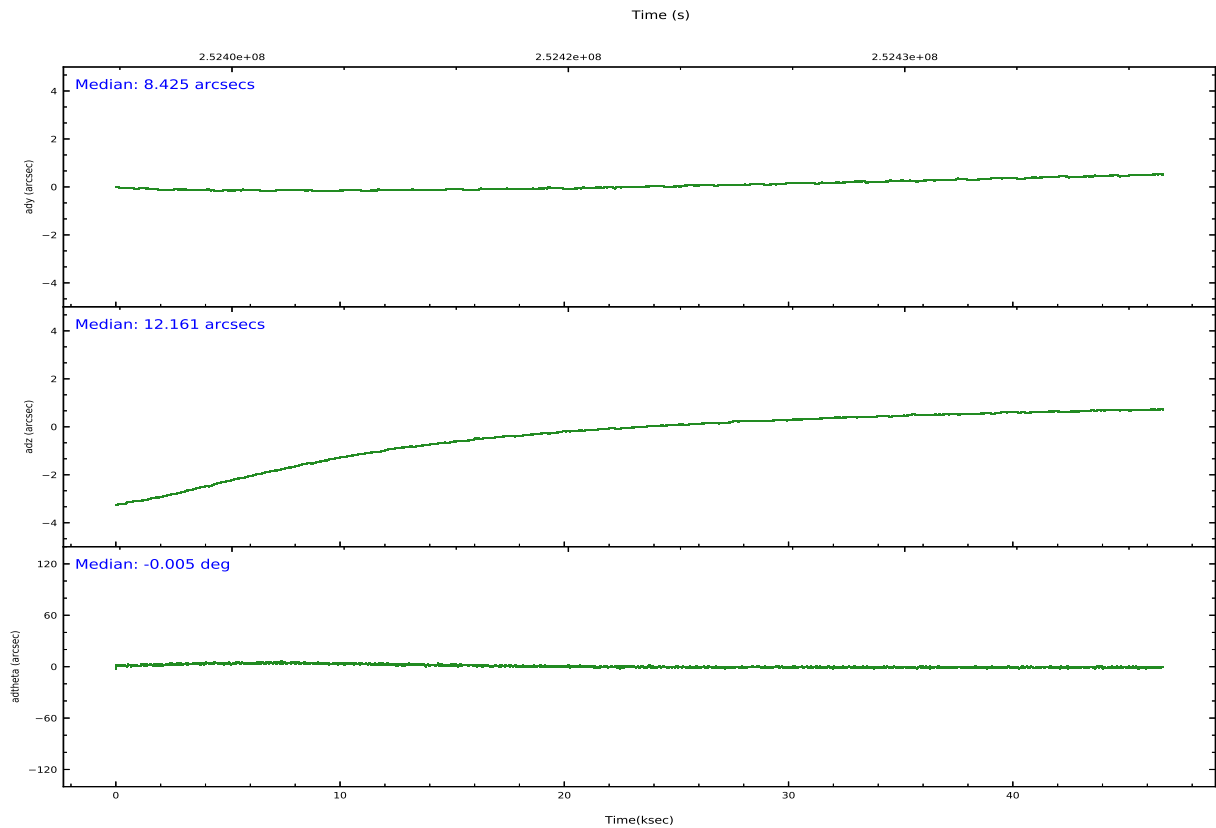
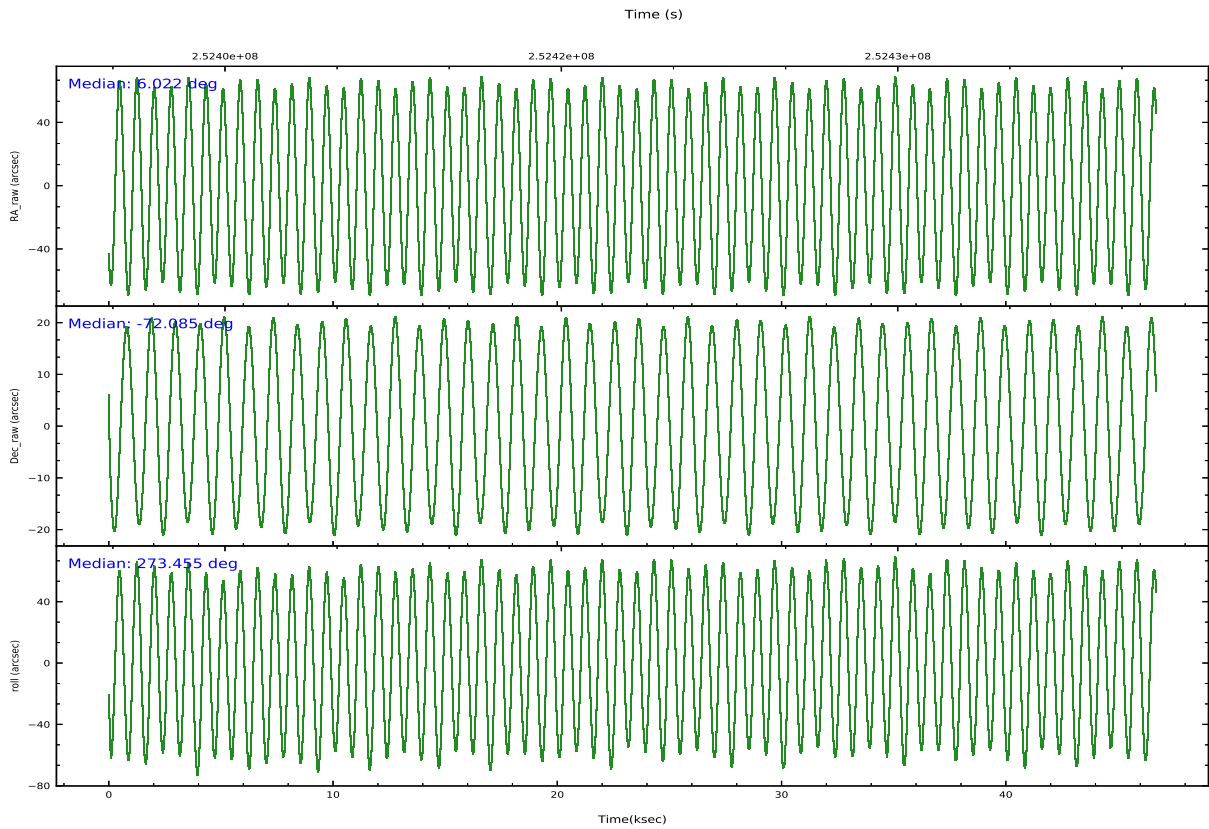
2.2 Compared Parameters

Parameter	Planned	Actual
Instrument	HRC	HRC
Detector	HRC-S	HRC-S
Grating	NONE	NONE
Data mode	OBSERVING	OBSERVING
Observation mode	POINTING	POINTING
[deg] Pointing RA	5.967186	6.0107607883366
[deg] Pointing Dec	-72.062148	-72.0829492945
[deg] Pointing Roll	273.338000	273.45483599905
[mm] SIM focus pos	-1.533336	-1.526339935833849
[mm] SIM defocus	7.710433287538843e-07	0.006996703570447904
[mm] SIM translation stage pos	250.455976	250.4635187648994
[mm] SIM translation stage offset	0	-0.007540371344731511
[s] Observation start time (MET)	252394936.184000	252393503.86283
Observation start date	2005-12-31T05:41:12	2005-12-31T05:18:23
[s] Observation end time (MET)	252440924.184000	252441524.60256
Observation end date	2005-12-31T18:27:40	2005-12-31T18:38:44

Parameter	Planned	Actual
Obspar version number	8	8
Obspar file type	PREDICTED	ACTUAL
Obspar update status	NONE	UPDATED

2.3 Aspect





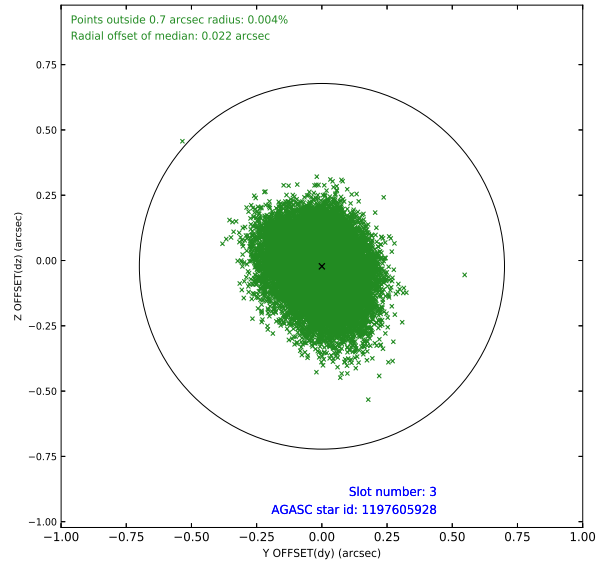
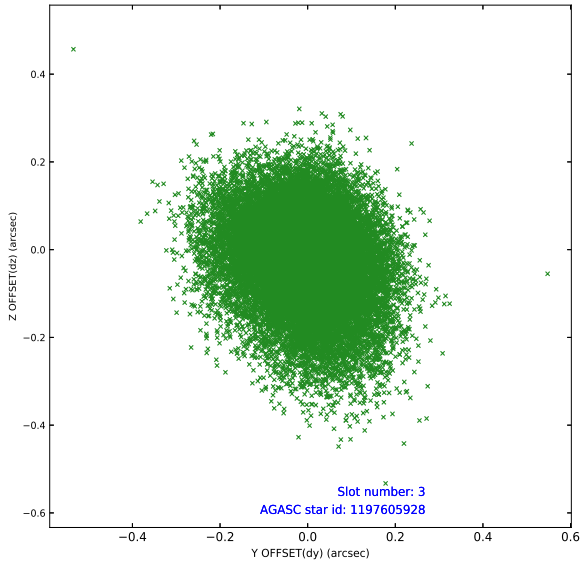
Slot Statistics

slot	status	used	id	mag	n_pts	frac_pts	med_dy	med_dz	dr1	dr2	ra	dec	mean_y	mea
0	FID		HRC-S-1	7.00	11392	1.000	0.115	-0.134	0.019	0.070	0.000000	0.000000	-1162.67	-460
1	FID		HRC-S-2	7.00	11392	1.000	0.172	-0.112	0.013	0.020	0.000000	0.000000	1236.94	-453
2	FID		HRC-S-3	7.01	11392	1.000	0.104	-0.059	0.027	0.083	0.000000	0.000000	-1165.32	569
3	GUIDE	used	1197605928	9.89	22721	1.000	0.000	-0.022	0.147	0.243	4.361277	-72.423732	1221.88	-1819
4	GUIDE	used	1197607928	9.63	22759	1.000	0.037	-0.018	0.151	0.252	7.837743	-72.165759	524.61	2035
5	GUIDE	used	1197620848	10.04	22753	1.000	0.033	-0.082	0.181	0.294	3.913465	-71.739620	-1254.03	-2247
6	GUIDE	used	1197617752	10.28	22749	1.000	0.029	0.201	0.181	0.289	4.480632	-72.284129	723.65	-1672
7	GUIDE	used	1197621088	9.90	22723	1.000	-0.088	-0.072	0.170	0.283	3.823480	-72.180366	330.10	-2383

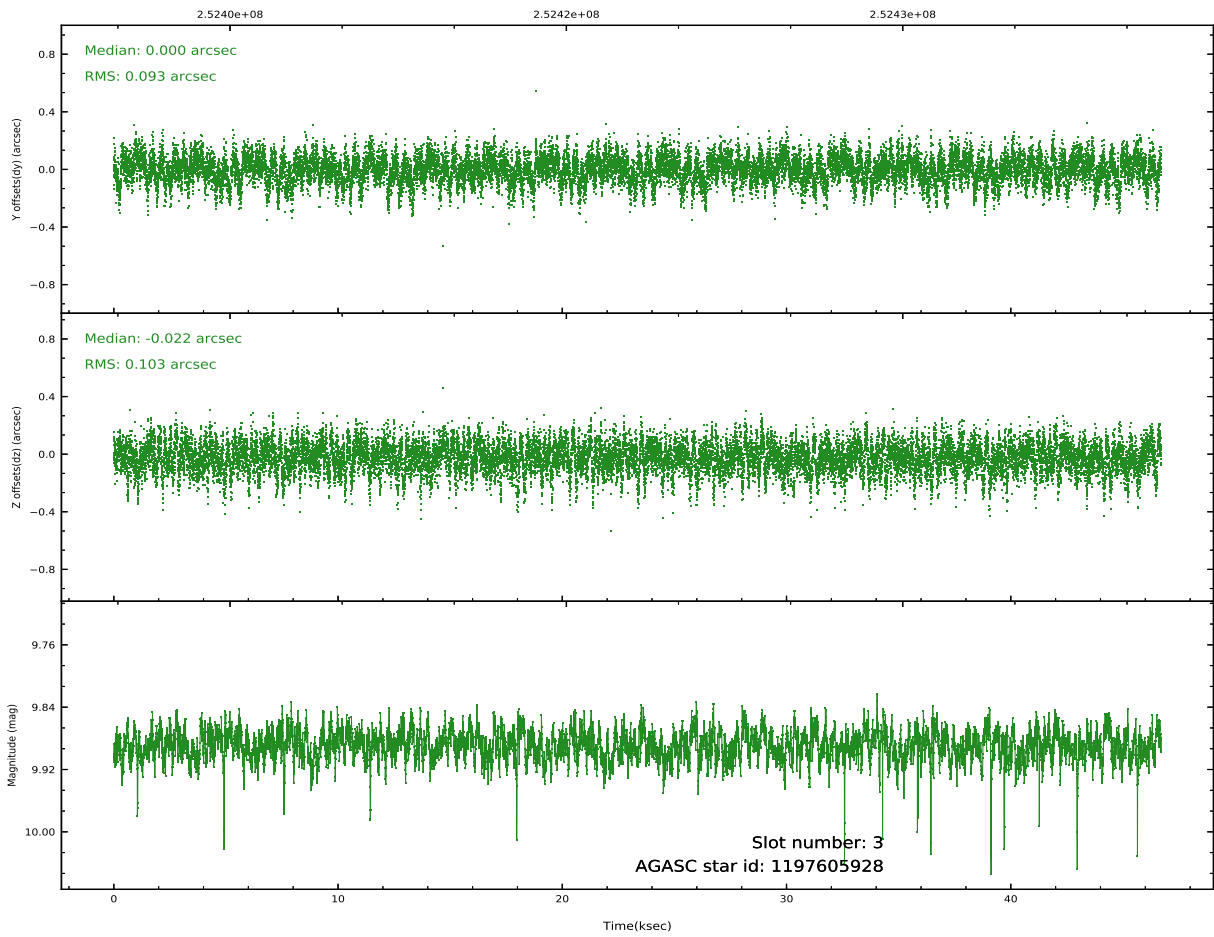
∞

2.4 Star Slots

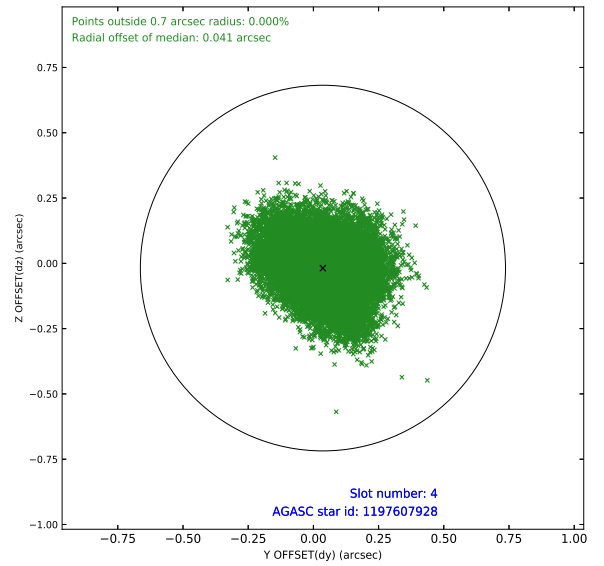
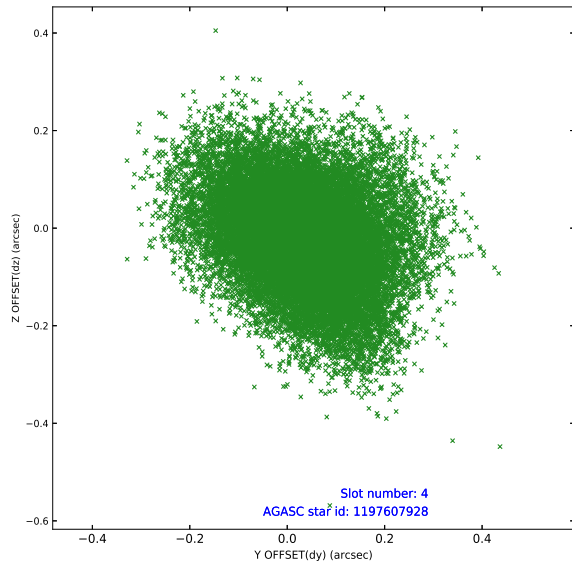
2.4.1 Slot 3



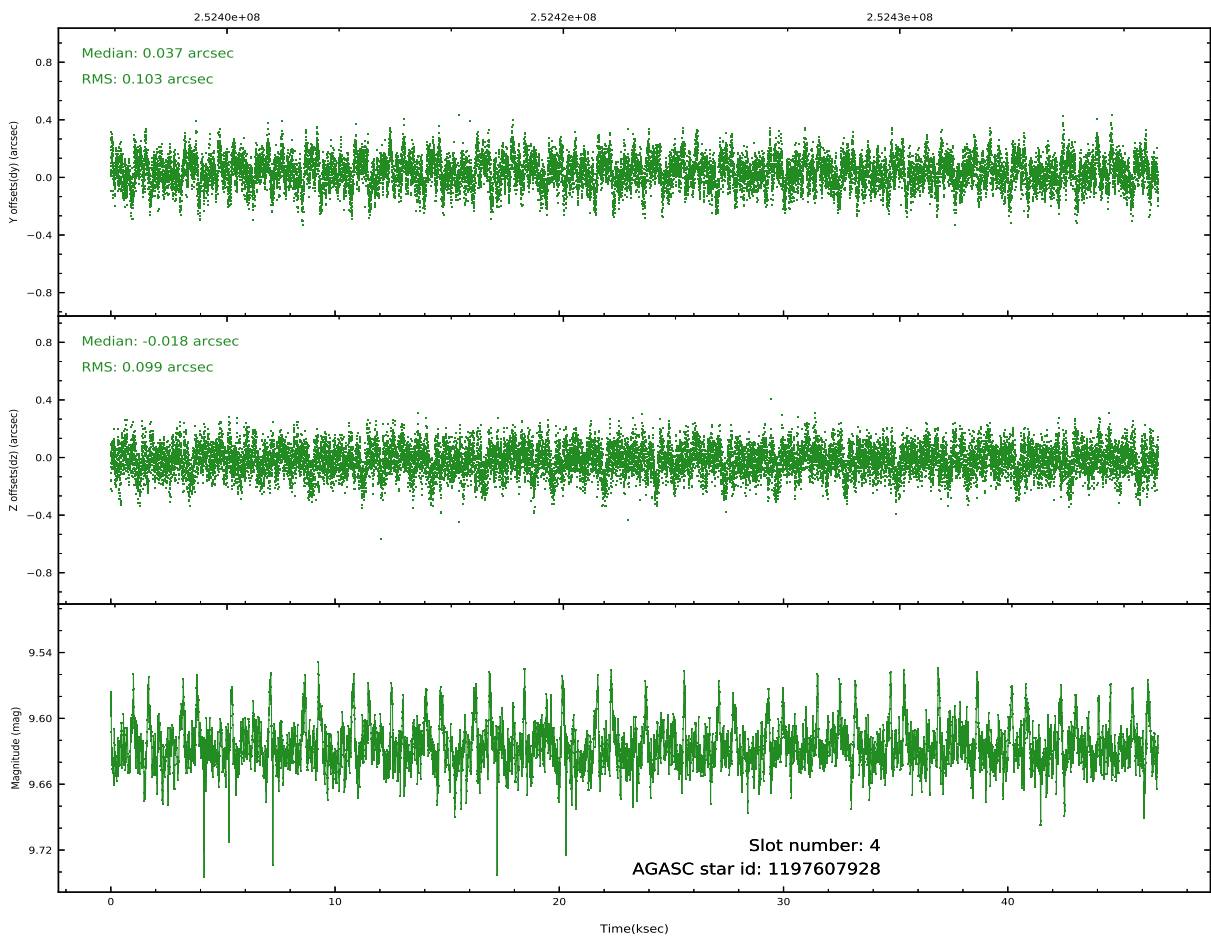
Time (s)



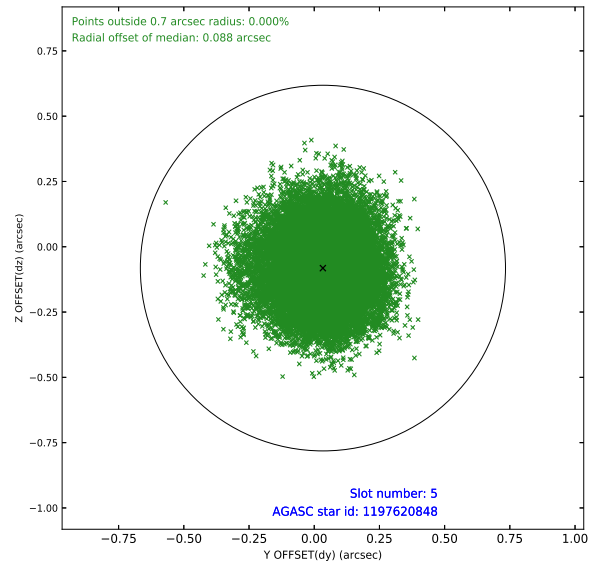
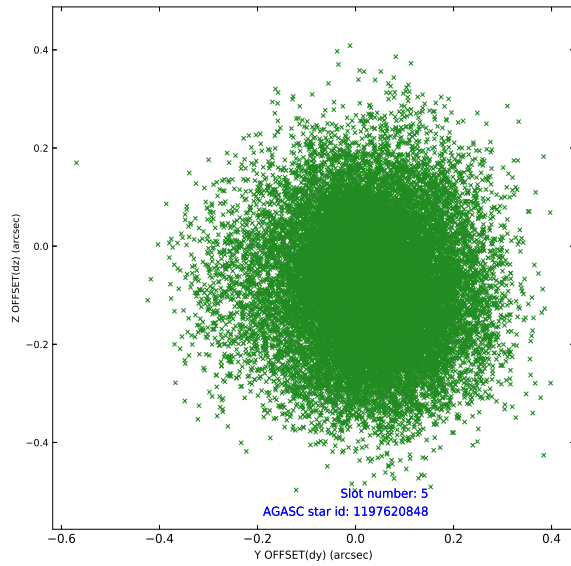
2.4.2 Slot 4



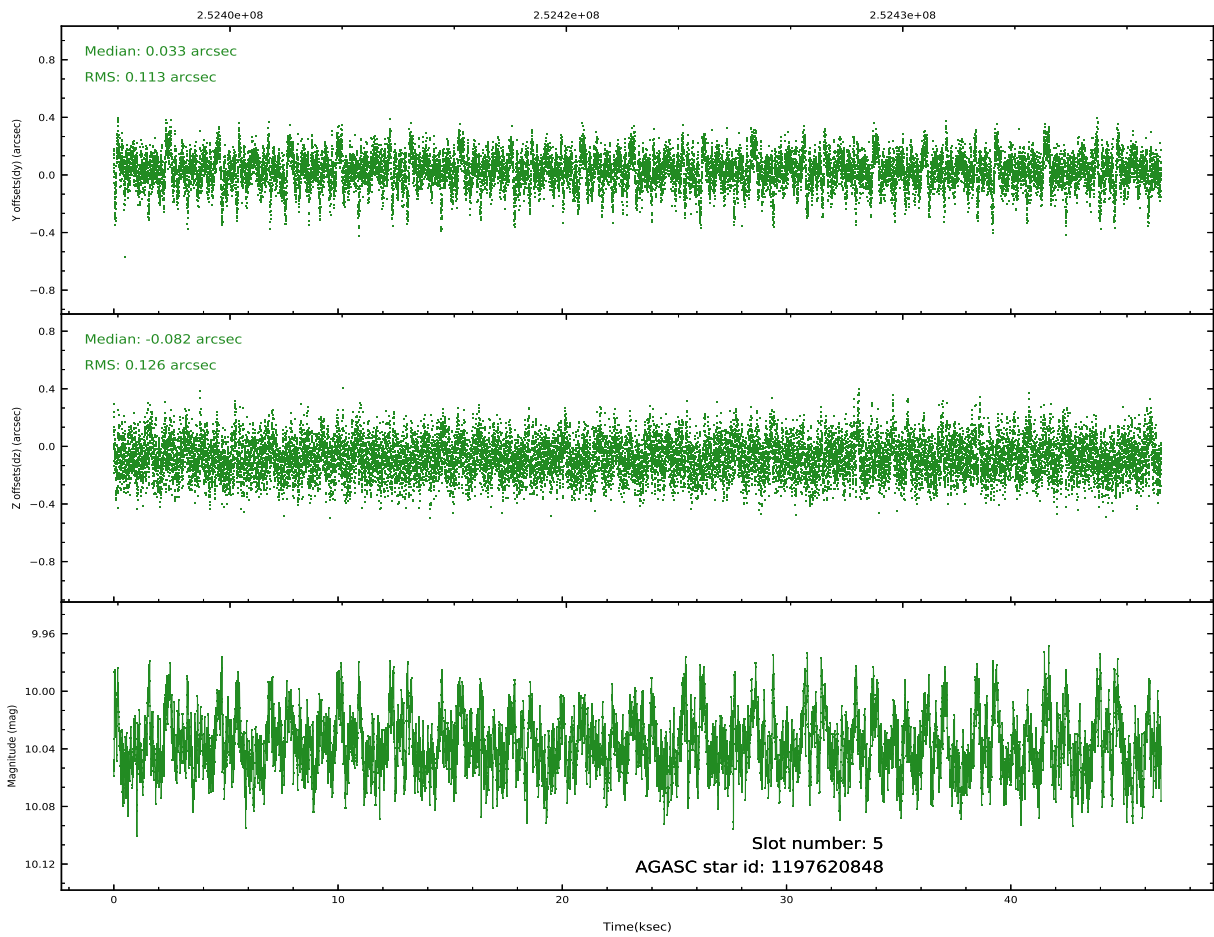
Time (s)



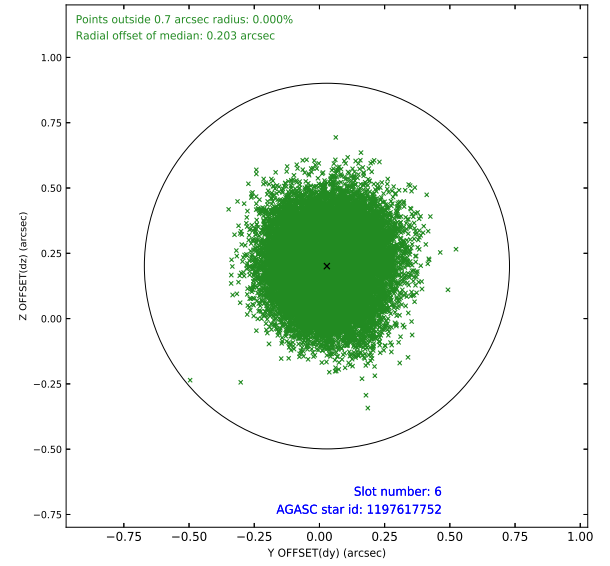
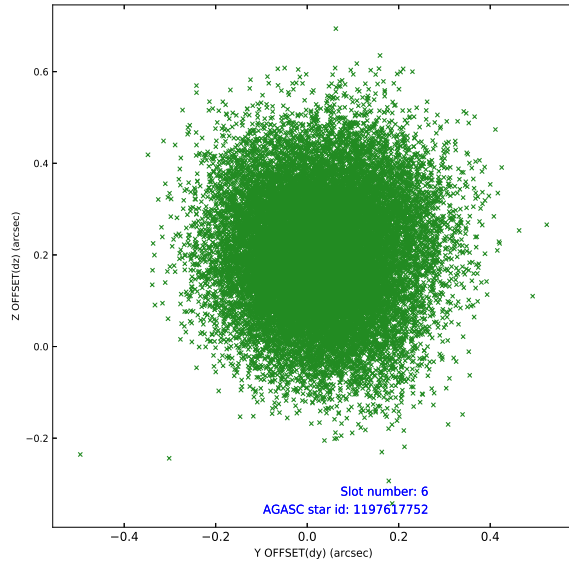
2.4.3 Slot 5



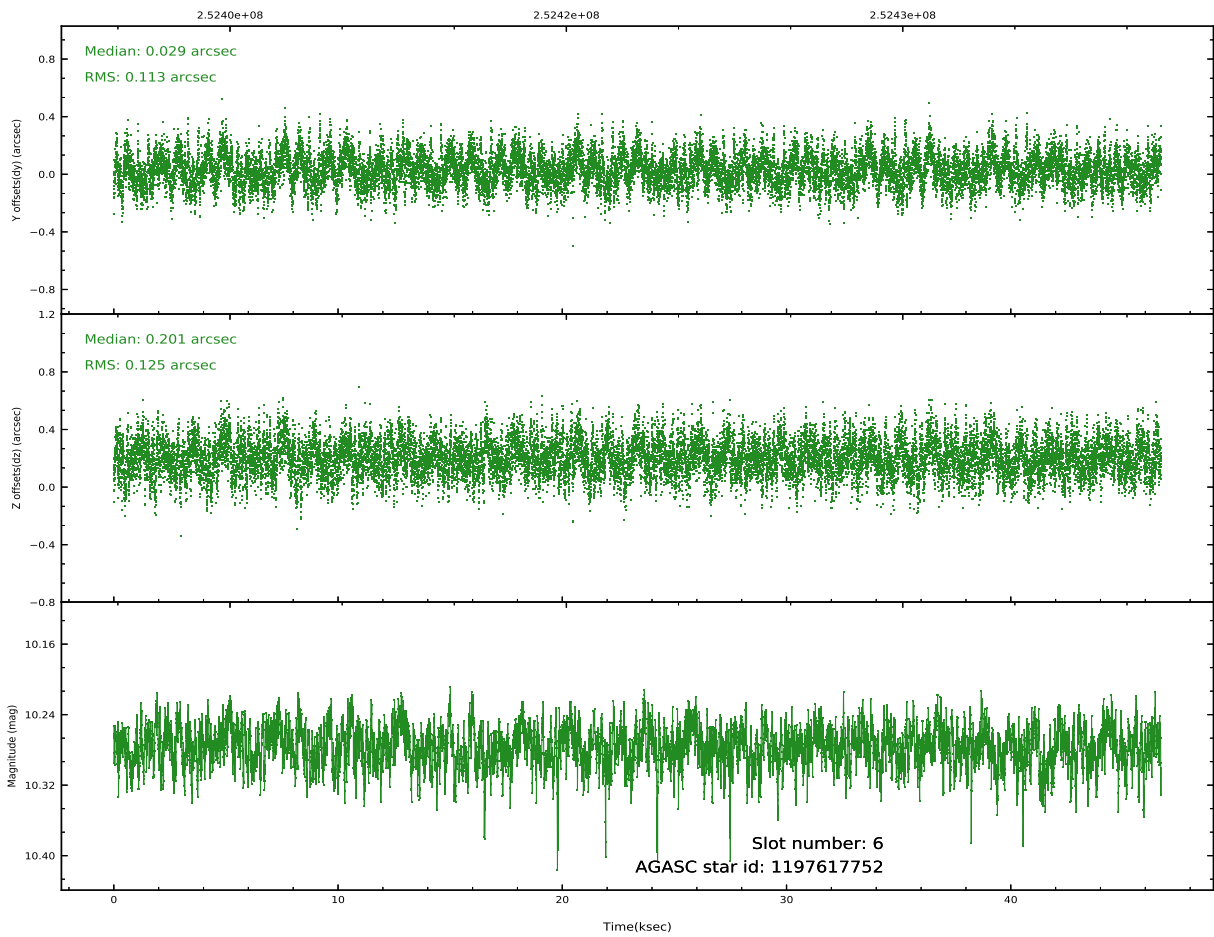
Time (s)



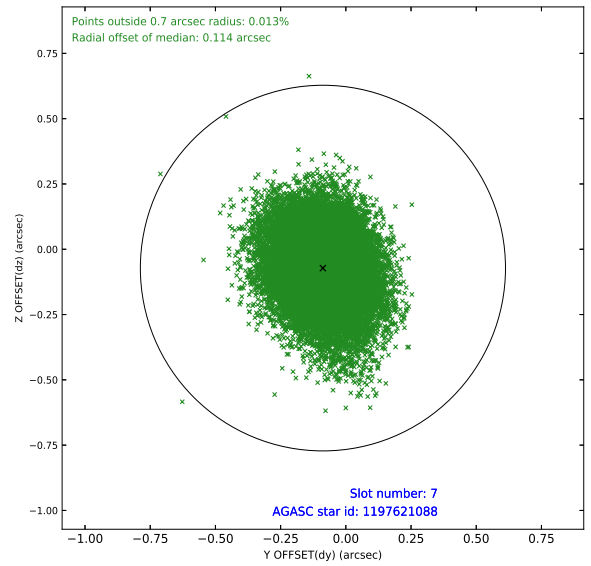
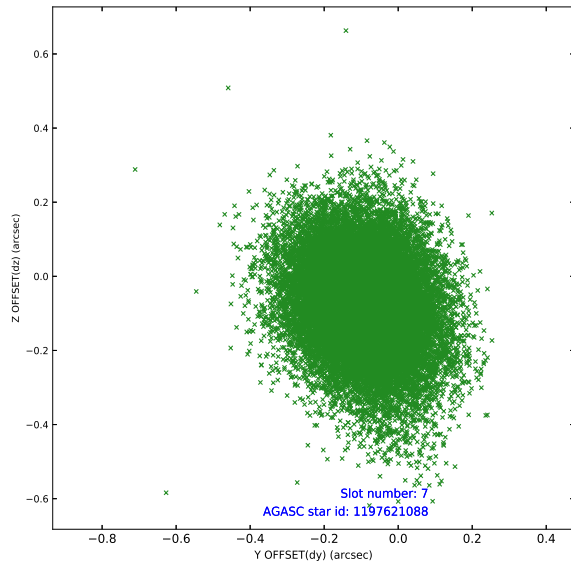
2.4.4 Slot 6



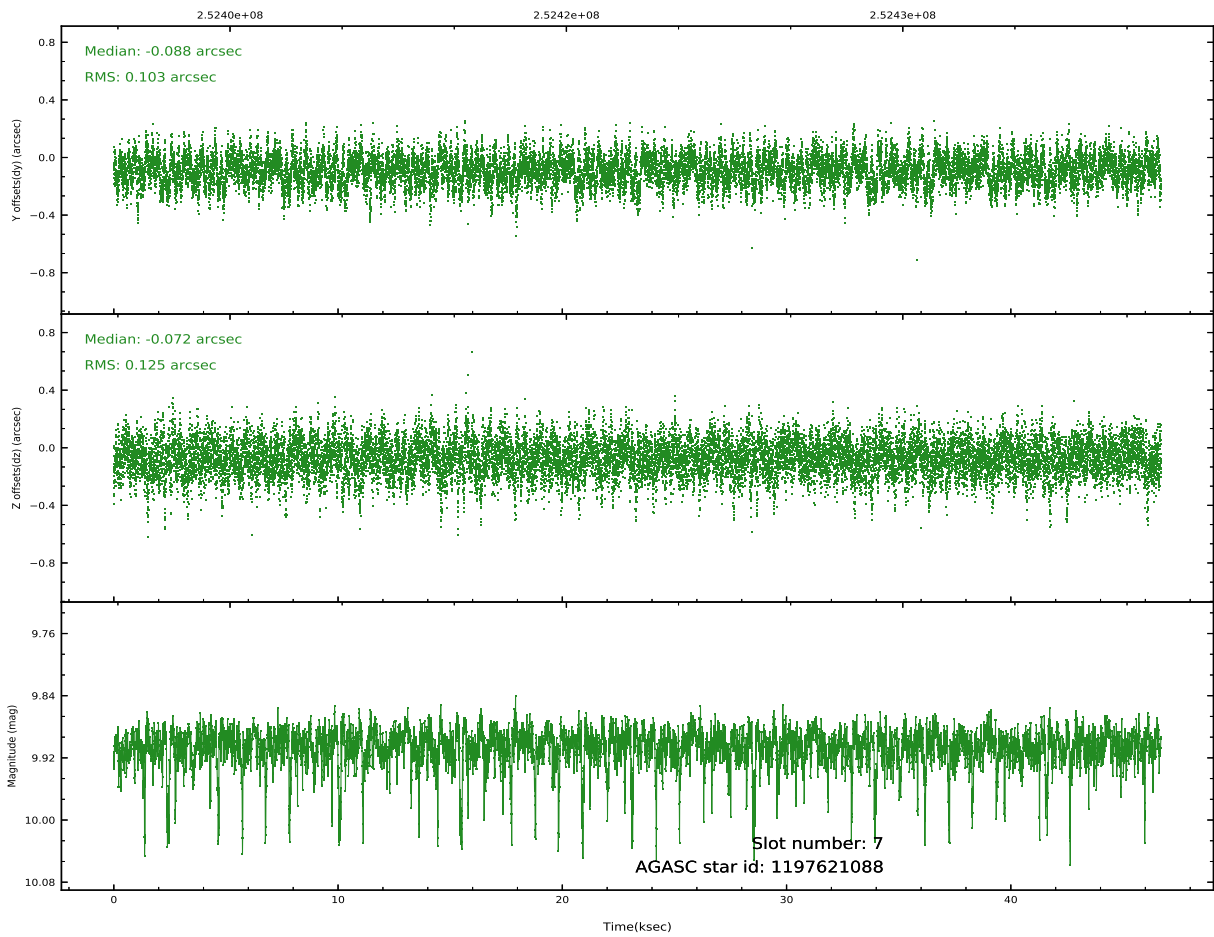
Time (s)



2.4.5 Slot 7

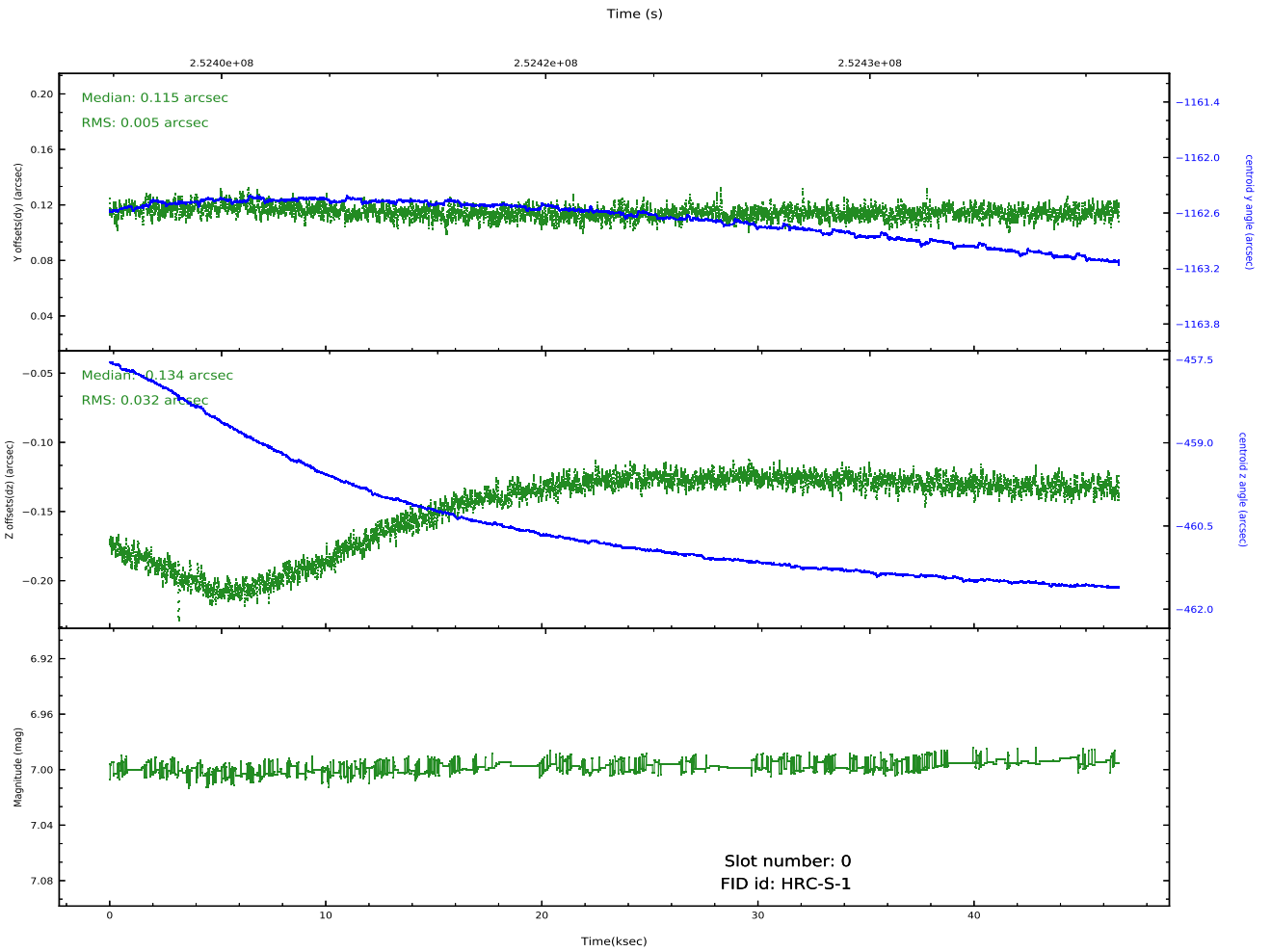
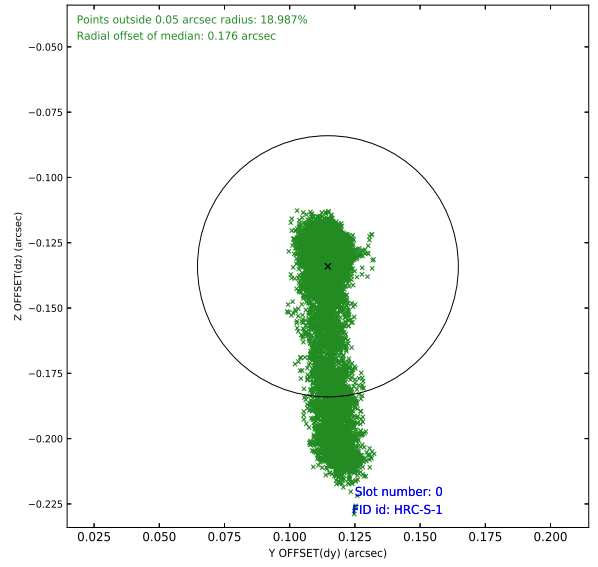
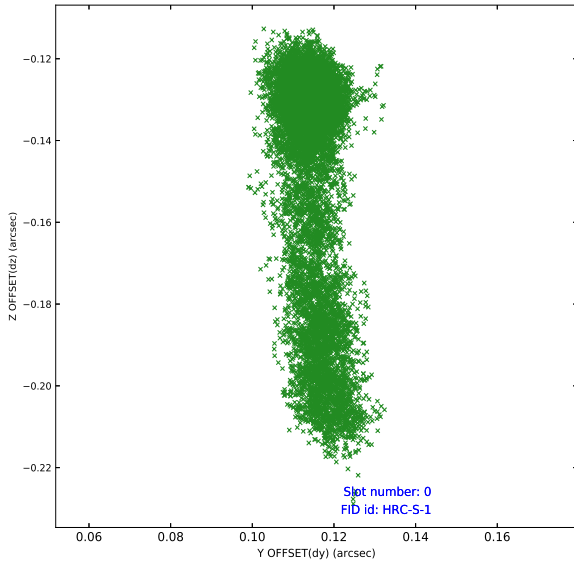


Time (s)

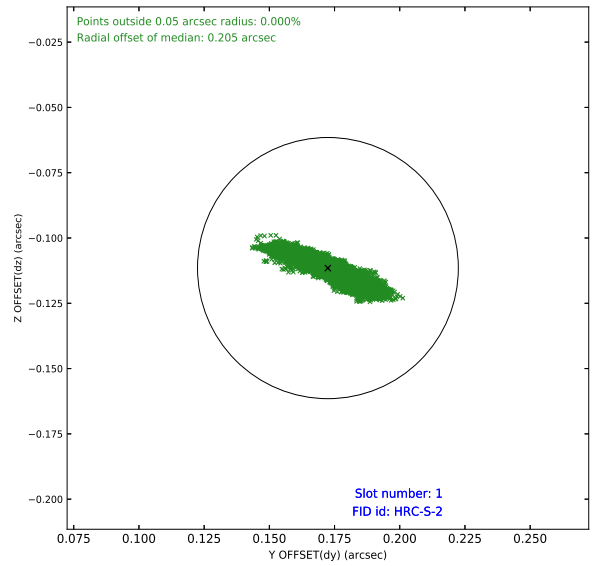
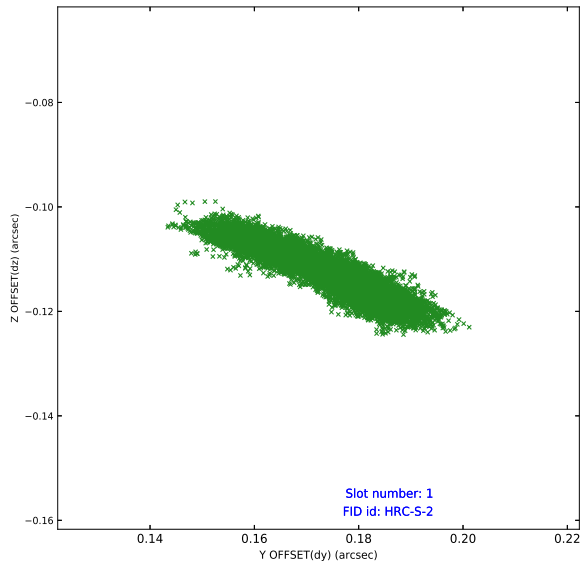


2.5 FID Slots

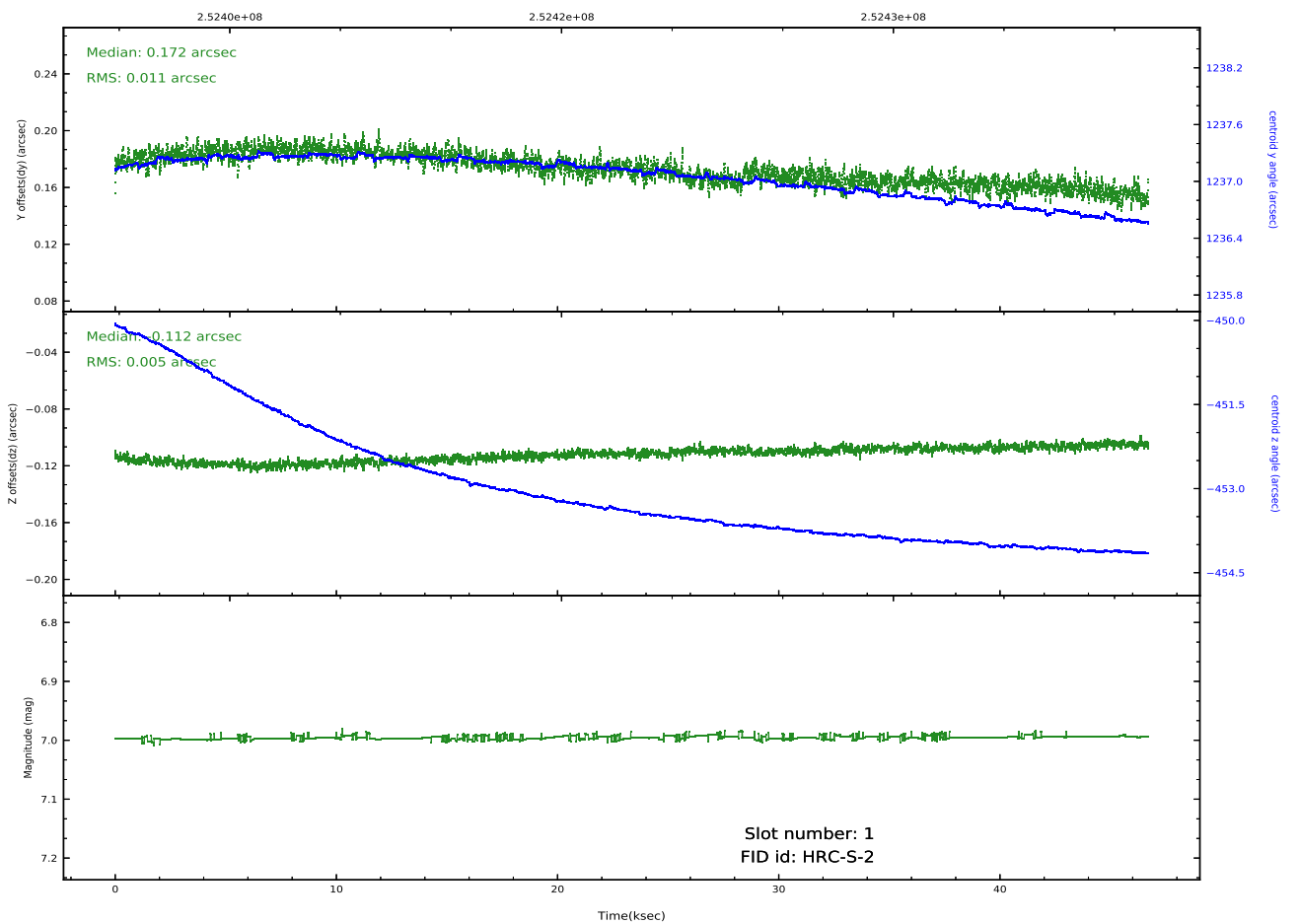
2.5.1 Slot 0



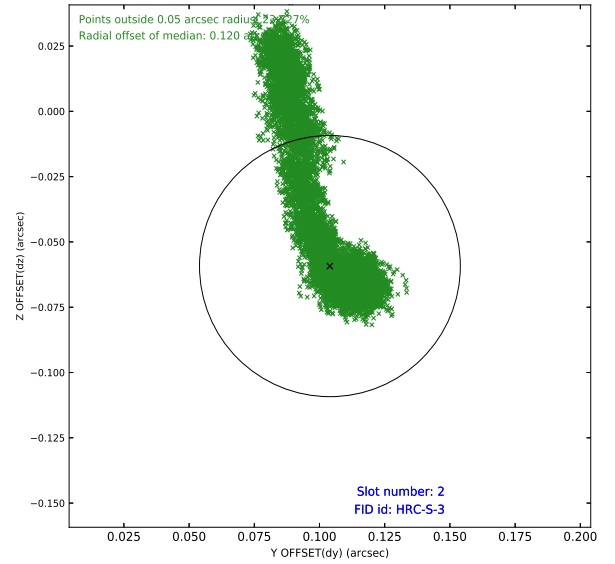
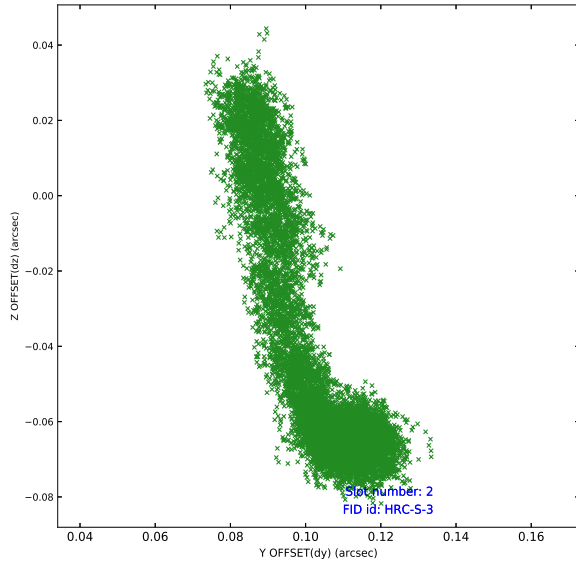
2.5.2 Slot 1



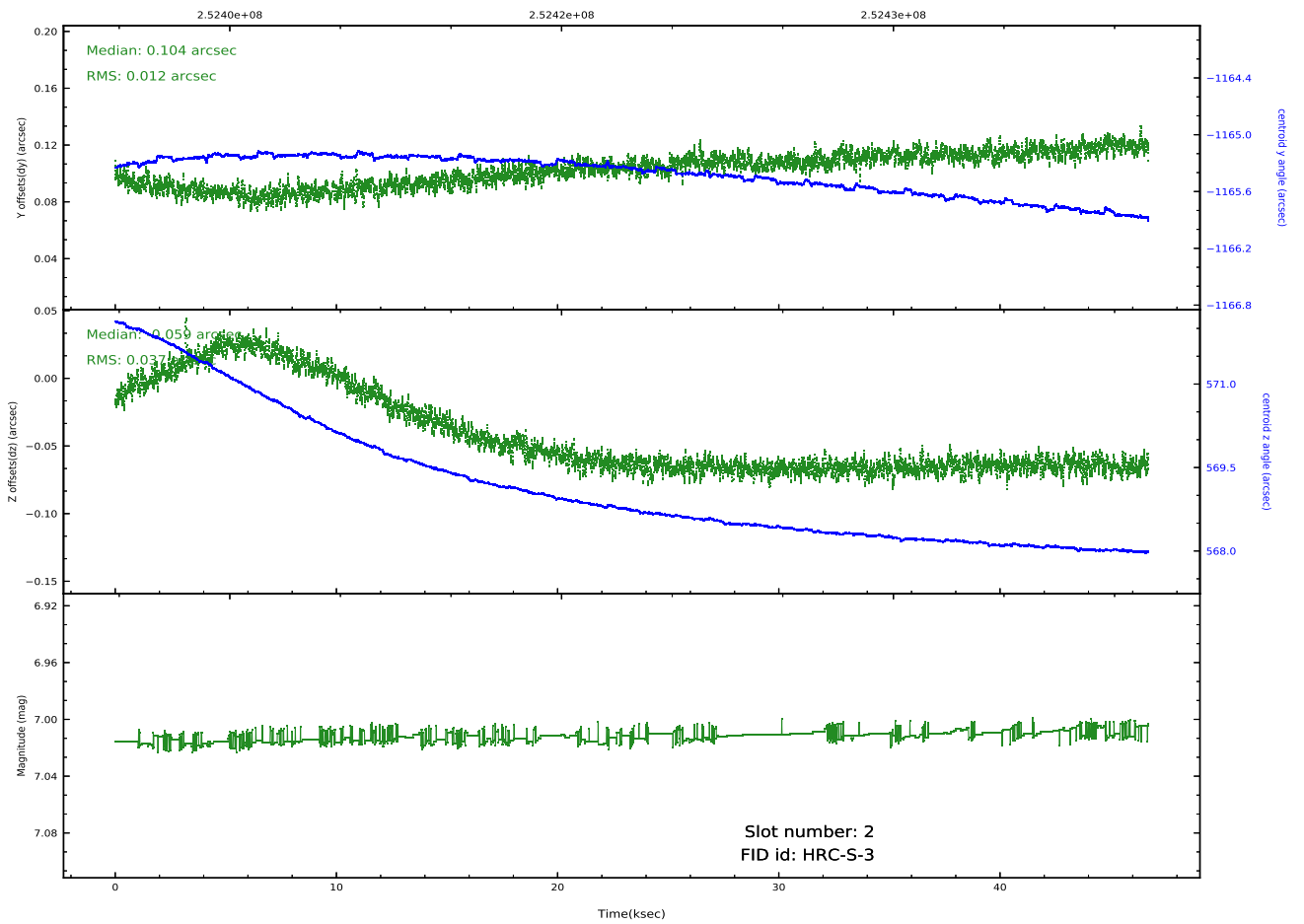
Time (s)



2.5.3 Slot 2



Time (s)



A Summary

A.1 Status

V&V Scientist	Jen Lauer
V&V Date (YYYY-MM-DD)	2020.10.16
V&V Edition	1
V&V Disposition and Status	OK
V&V Charge Time	44.35918

A.2 Comments