

V&V Reference Report

L2 ASCDS Version : 8.5.1.1

Observation 6262 - L2 Version 3
Chandra X-Ray Center

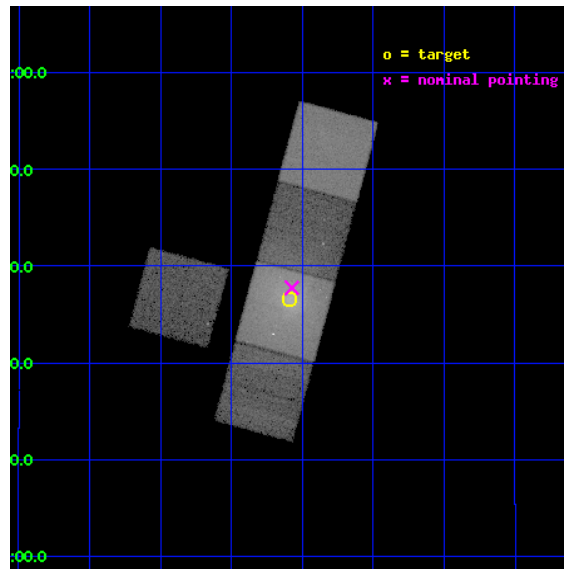
L2 Processing Date : Dec 20 2012

Contents

1	Front	2
2	OBI	3
2.1	OBI	3
2.1.1	Images	3
2.1.2	Bias	3
2.1.3	Parameters	4
2.1.4	Events	4
2.2	Compared Parameters	5
2.3	Aspect	6
2.4	Star Slots	9
2.4.1	Slot 3	9
2.4.2	Slot 4	10
2.4.3	Slot 5	11
2.4.4	Slot 6	12
2.4.5	Slot 7	13
2.5	FID Slots	14
2.5.1	Slot 0	14
2.5.2	Slot 1	15
2.5.3	Slot 2	16
A	Summary	17
A.1	Status	17
A.2	Comments	17

1 Front

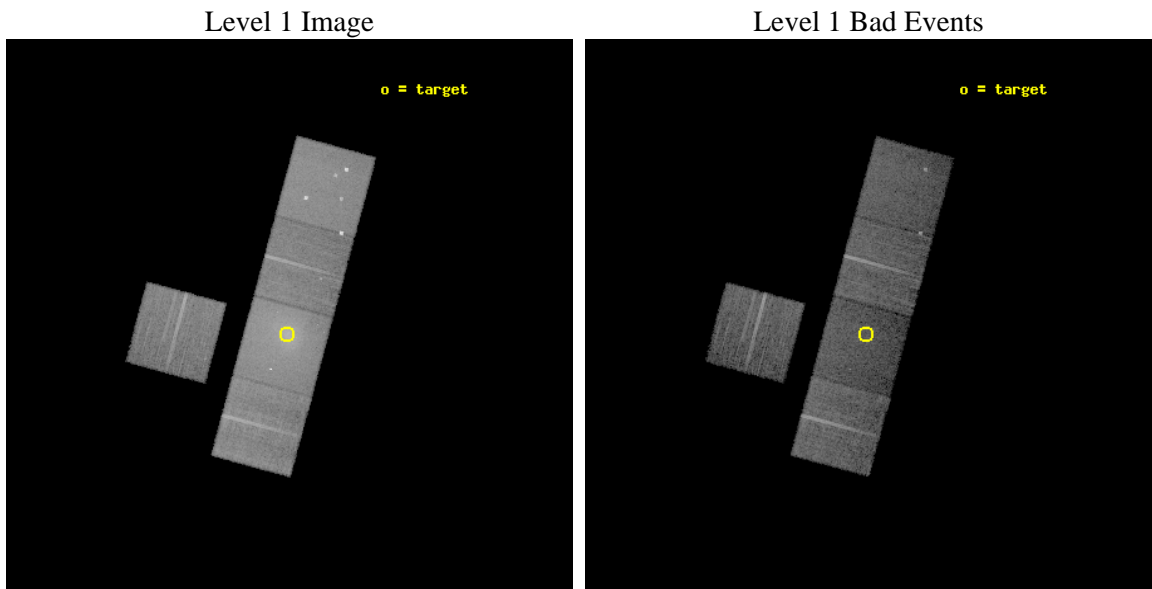
seq_num	800508	Sequence number
obs_id	6262	Observation id
title	The Interaction between Cluster Central Radio Sources and Cooling Flows	Proposal title
observer	Dr. CRAIG SARAZIN	Principal investigator
object	A2063	Source name
dtcycle	0	
cycle	P	events from which exps? Prim/Second/Both
ra_targ	230.772083	Observer's specified target RA [deg]
dec_targ	8.608861	Observer's specified target Dec [deg]
ra_nom	230.76830930455	Nominal RA [deg]
dec_nom	8.6293021433738	Nominal Dec [deg]
roll_nom	105.15721140801	Nominal Roll [deg]
revision	3	Processing version of data
ontime	14349.899972379	Sum of GTIs [s]
livetime	14162.407964997	Livetime [s]
ontime3	14349.899972379	Sum of GTIs [s]
ontime5	14349.899972379	Sum of GTIs [s]
ontime6	14349.899972379	Sum of GTIs [s]
ontime7	14349.899972379	Sum of GTIs [s]
ontime8	14349.899972379	Sum of GTIs [s]
l2events	288398	Number of level 2 events



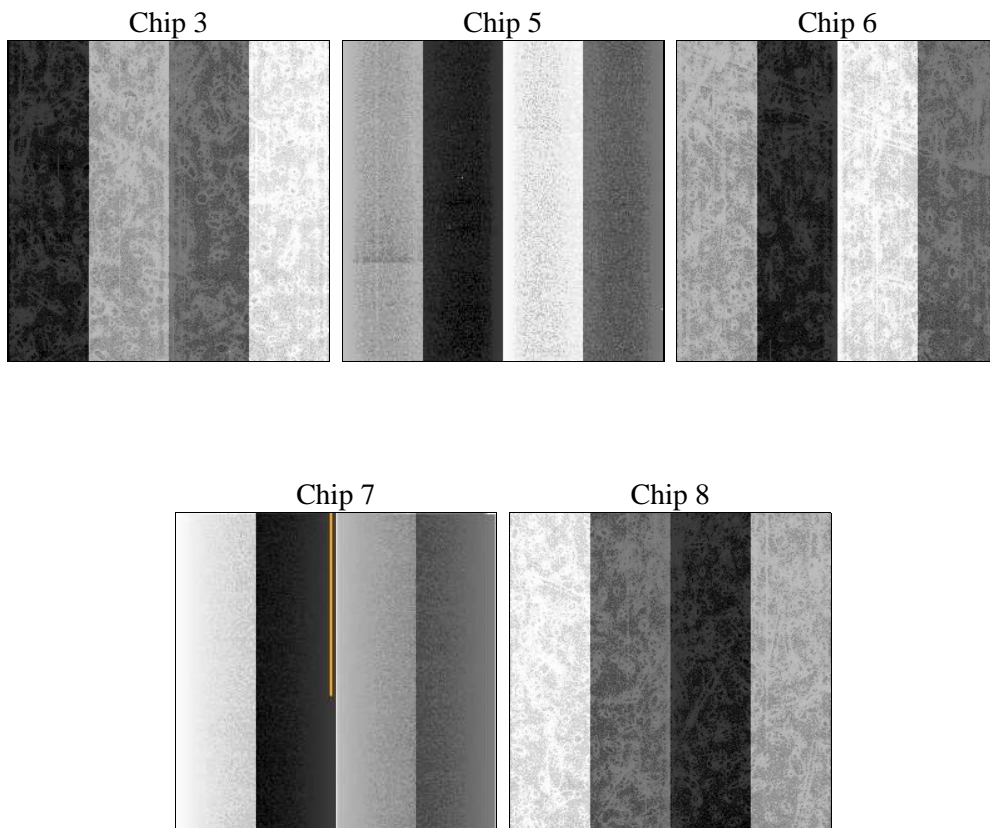
2 OBI

2.1 OBI

2.1.1 Images



2.1.2 Bias



2.1.3 Parameters

obi_num	0	Obi number	sched_exp_time	14194.194000	[s] Scheduled observation exposure time
ascdsver	8.5.1.1	Processing system revision	ontime	14349.899972379	Sum of GTIs [s]
caldbver	4.5.5	 	ontime3	14349.899972379	Sum of GTIs [s]
date	2012-12-21T02:14:57	Date and time of file creation	ontime5	14349.899972379	Sum of GTIs [s]
revision	3	Processing version of data	ontime6	14349.899972379	Sum of GTIs [s]
			ontime7	14349.899972379	Sum of GTIs [s]
			ontime8	14349.899972379	Sum of GTIs [s]
			l1events	728257	Number of level 1 events

2.1.4 Events

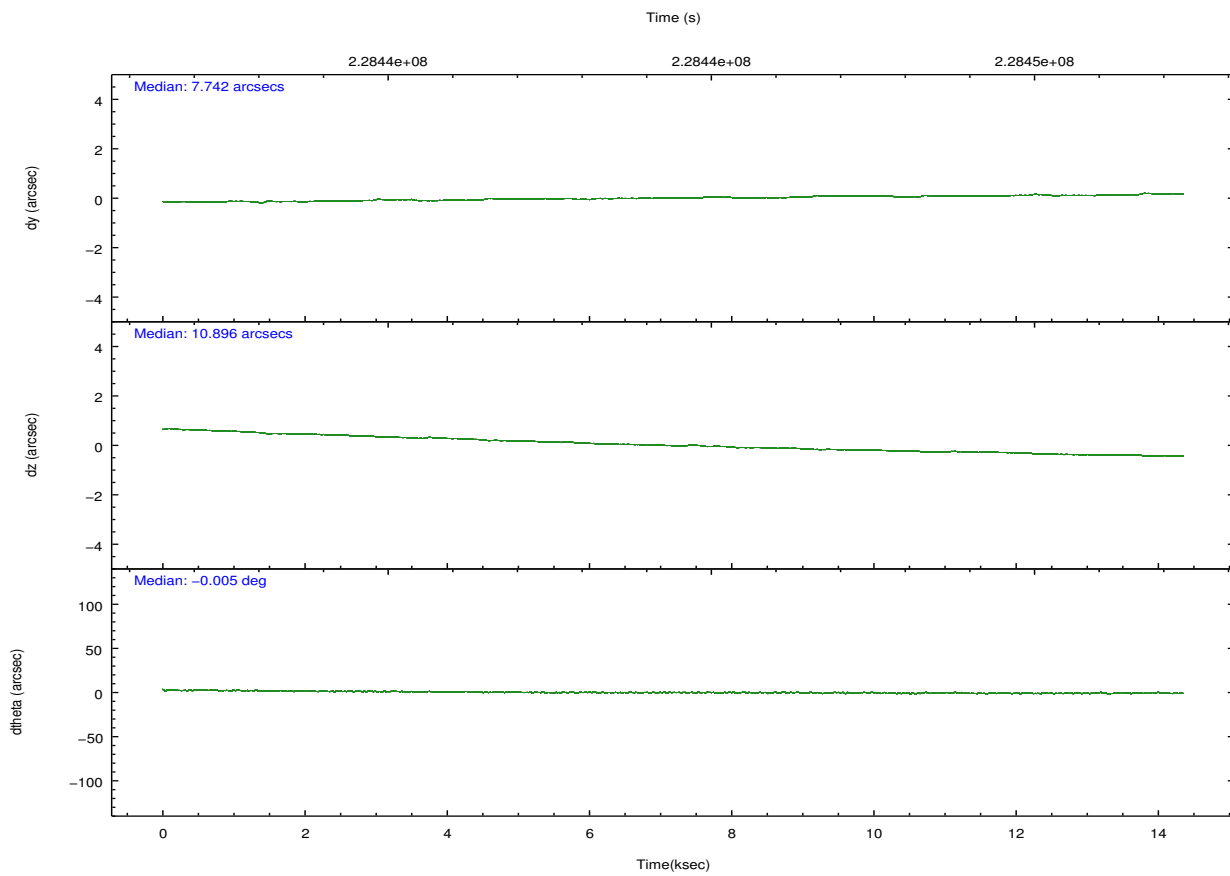
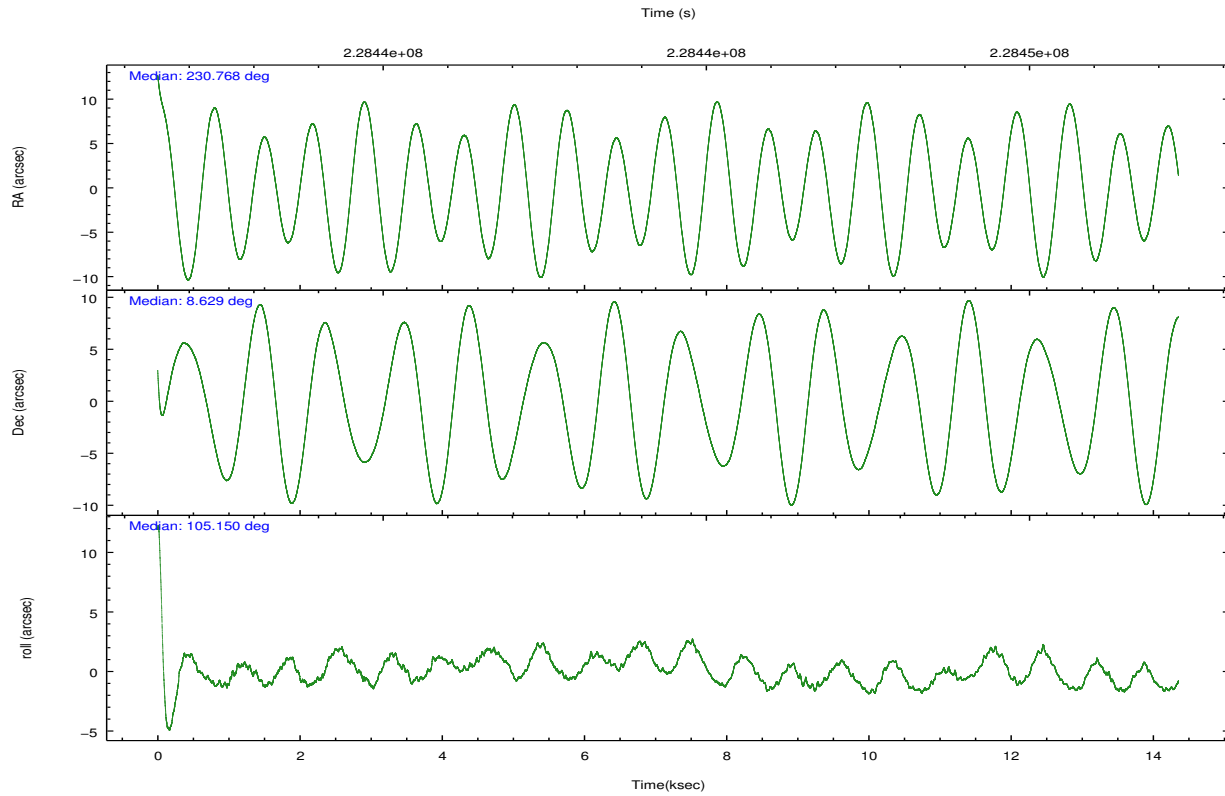
	ccd 3	ccd 5	ccd 6	ccd 7	ccd 8
level 1 events	104252	165351	119173	199120	140361
rejected events	83901	71847	88225	61975	95265
rejected %	80%	43%	74%	31%	67%

	ccd 3	ccd 5	ccd 6	ccd 7	ccd 8
grade 0 events	12709	14271	21088	28090	24381
	12%	8%	17%	14%	17%
grade 1 events	100	692	103	113	133
	0%	0%	0%	0%	0%
grade 2 events	3194	28004	4324	31557	8015
	3%	16%	3%	15%	5%
grade 3 events	1561	5952	1828	13922	3506
	1%	3%	1%	6%	2%
grade 4 events	1485	5442	1763	13670	3339
	1%	3%	1%	6%	2%
grade 5 events	3587	11258	3985	11500	5389
	3%	6%	3%	5%	3%
grade 6 events	2483	43898	3196	54090	8284
	2%	26%	2%	27%	5%
grade 7 events	79133	55834	82886	46178	87314
	75%	33%	69%	23%	62%

2.2 Compared Parameters

Parameter	Planned	Actual	Parameter	Planned	Actual
Instrument	ACIS	ACIS	Obspar format version number	7	7
Detector	ACIS-35678	ACIS-35678	Obspar file type	PREDICTED	ACTUAL
Grating	NONE	NONE	Obspar update status	NONE	UPDATED
Data mode	VFAINT	VFAINT	Number of optional ACIS chips dropped	0	0
Observation mode	POINTING	POINTING	On-chip summing requested	N	N
[deg] Pointing RA	230.788090	230.7683093045476	Subarray requested	NONE	NONE
[deg] Pointing Dec	8.610335	8.629302143373771	Alternating exposures requested	N	N
[deg] Pointing Roll	104.997600	105.1572114080055	[s] Primary exposure time	0.000000	3.1
[mm] SIM focus pos	-0.684267	-0.6828225247311905			
[mm] SIM defocus	0	0.001444936568705701			
[mm] SIM translation stage pos	-190.132523	-190.1400660498719			
[mm] SIM translation stage offset	0	0.00754346686406393			
[s] Observation start time (MET)	228437390.184000	228436028.11426			
Observation start date	2005-03-28T22:48:46	2005-03-28T22:27:08			
[s] Observation end time (MET)	228451585.184000	228451802.35247			
Observation end date	2005-03-29T02:45:21	2005-03-29T02:50:02			
Read mode	TIMED	TIMED			

2.3 Aspect

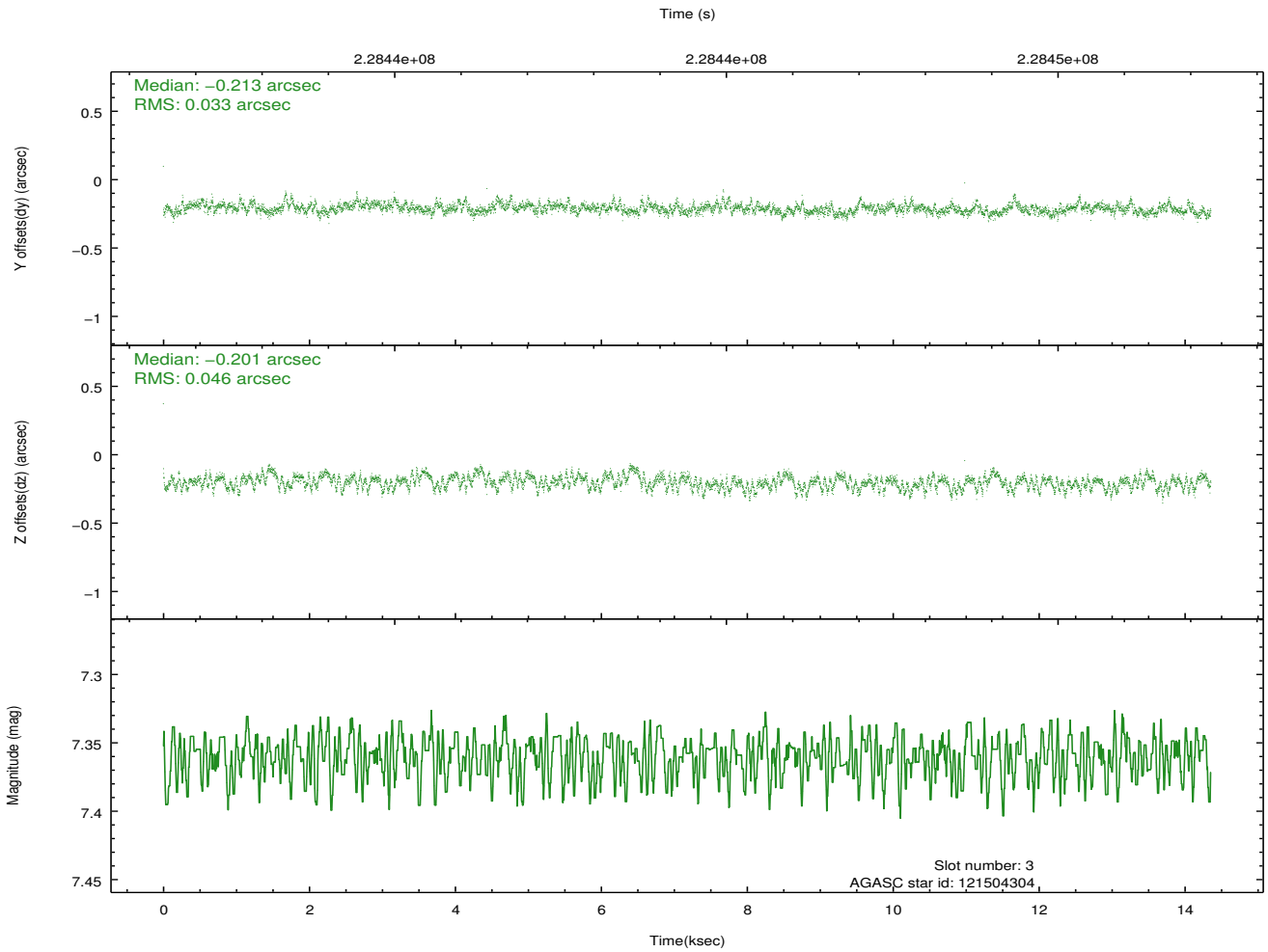
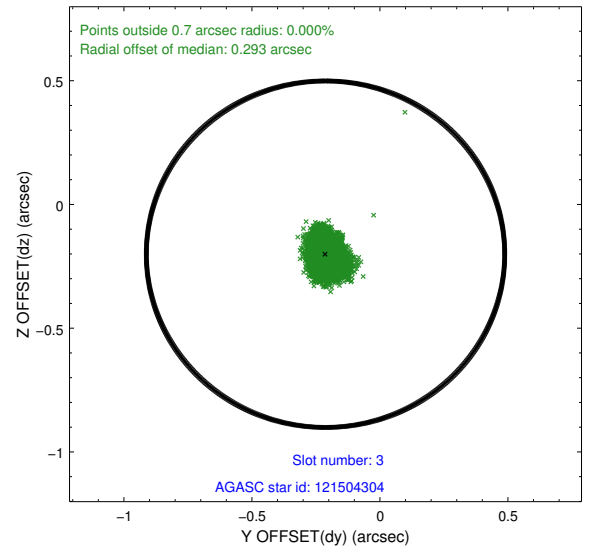
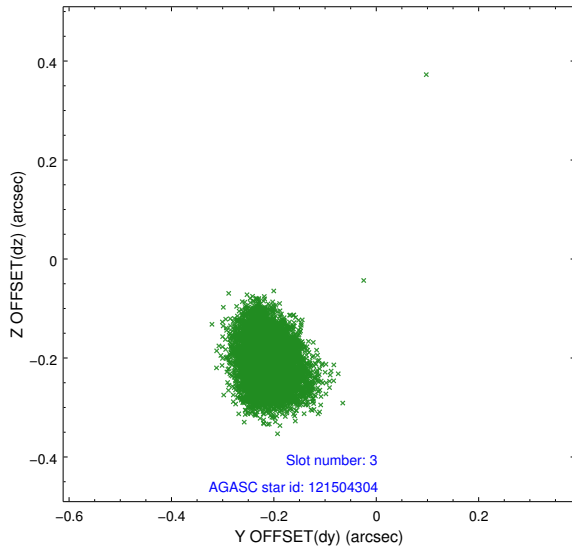


Slot Statistics

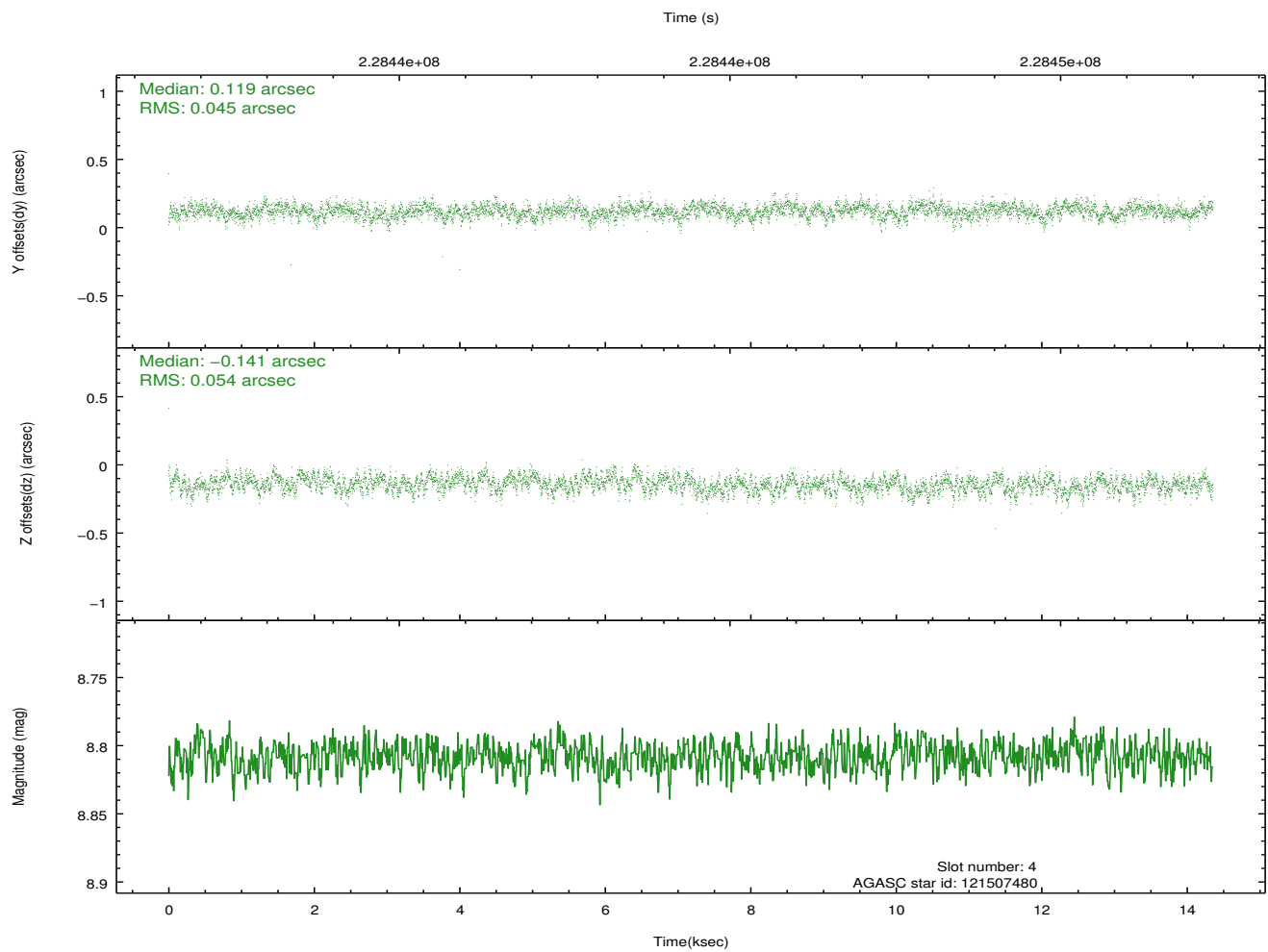
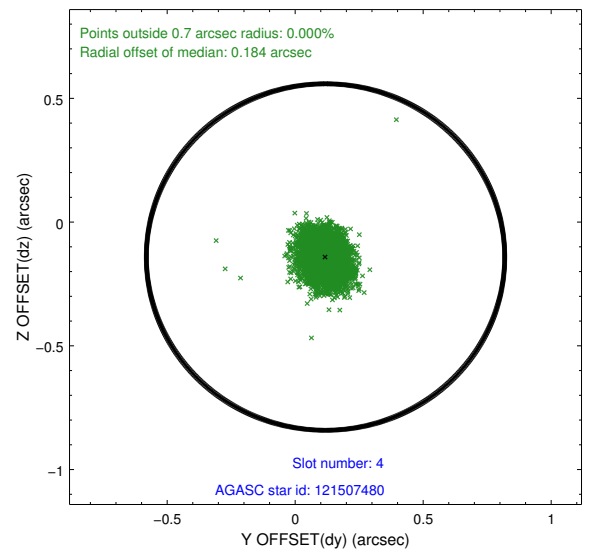
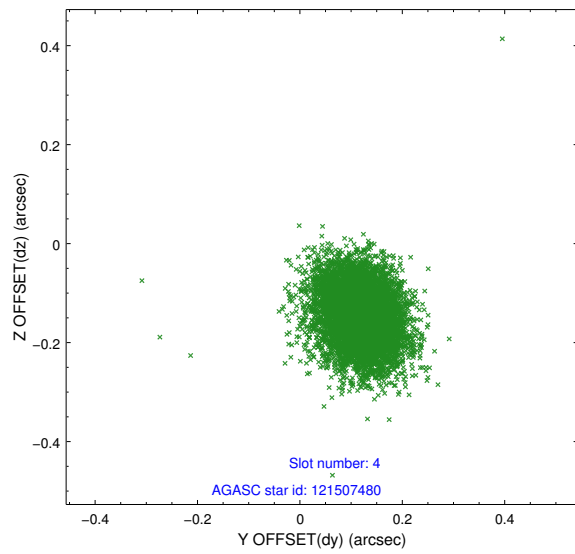
slot	status	id	mag	n_pts	med_dy	med_dz	dr1	dr2	ra	dec	mean_y	mean_z
0	FID	ACIS-S-2	7.11	3502	-0.038	-0.016	0.011	0.017	0.000000	0.000000	-760.52	-1732.24
1	FID	ACIS-S-4	7.20	3502	0.096	0.022	0.010	0.017	0.000000	0.000000	2152.71	176.01
2	FID	ACIS-S-5	7.23	3501	-0.090	0.002	0.011	0.017	0.000000	0.000000	-1813.04	169.95
3	GUIDE	121504304	7.36	7003	-0.213	-0.201	0.059	0.098	230.179446	8.913720	1616.57	1808.09
4	GUIDE	121507480	8.81	6999	0.119	-0.141	0.074	0.122	230.407322	8.449858	-206.24	1459.78
5	GUIDE	121507864	9.73	6990	0.160	0.042	0.106	0.173	231.118023	8.893781	682.94	-1397.17
6	GUIDE	121508304	7.54	7004	-0.287	0.066	0.063	0.099	231.074833	9.087473	1395.94	-1428.99
7	GUIDE	121506400	9.07	7001	0.225	0.234	0.090	0.147	231.447386	8.409178	-1304.36	-2081.07

2.4 Star Slots

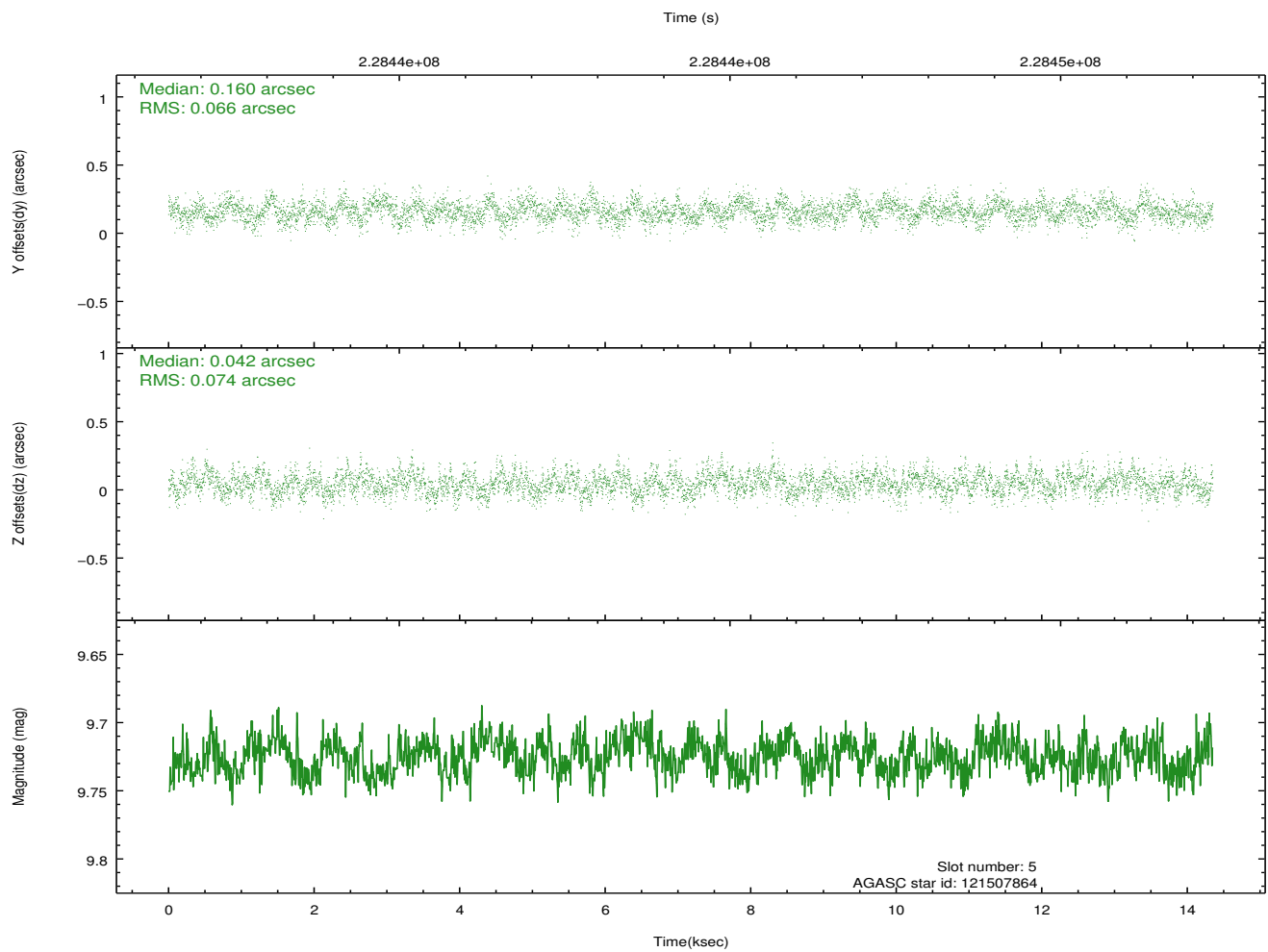
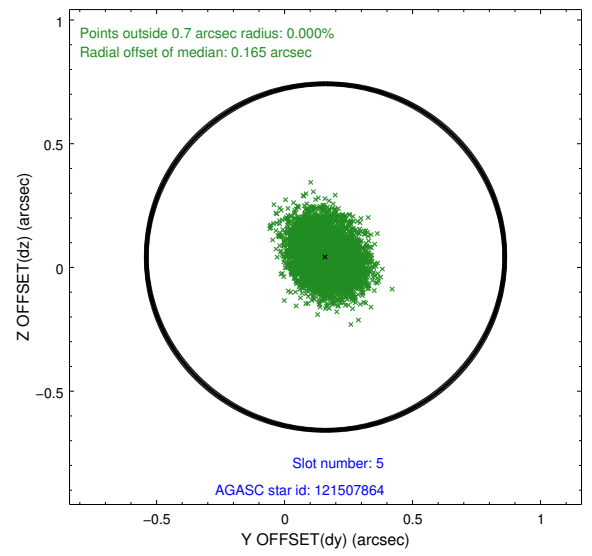
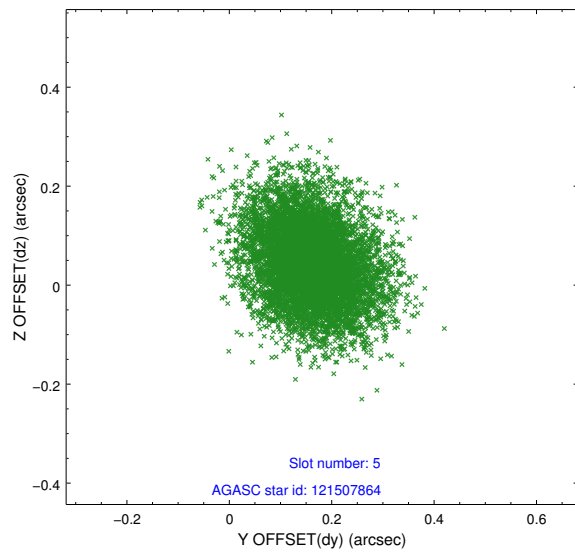
2.4.1 Slot 3



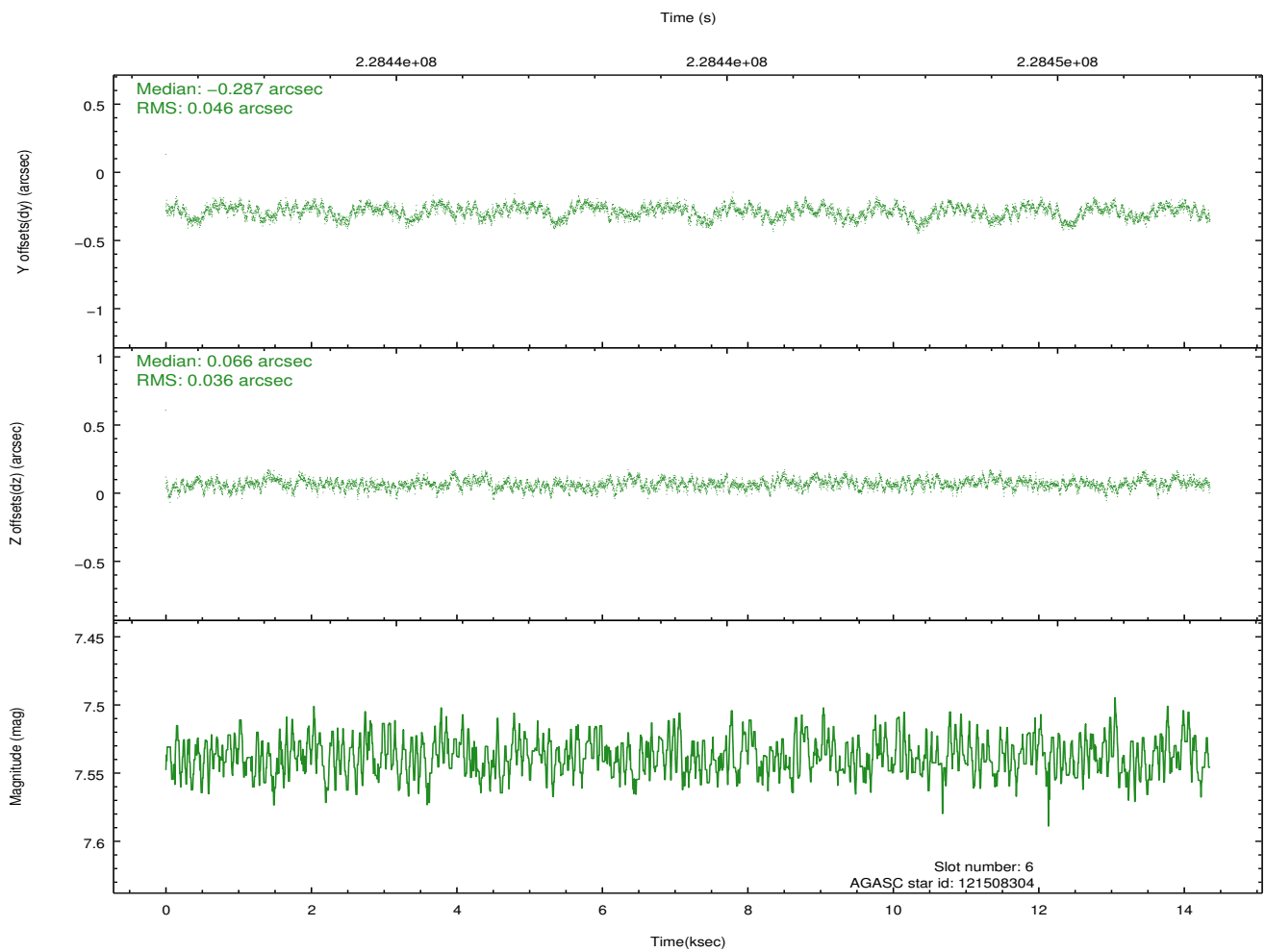
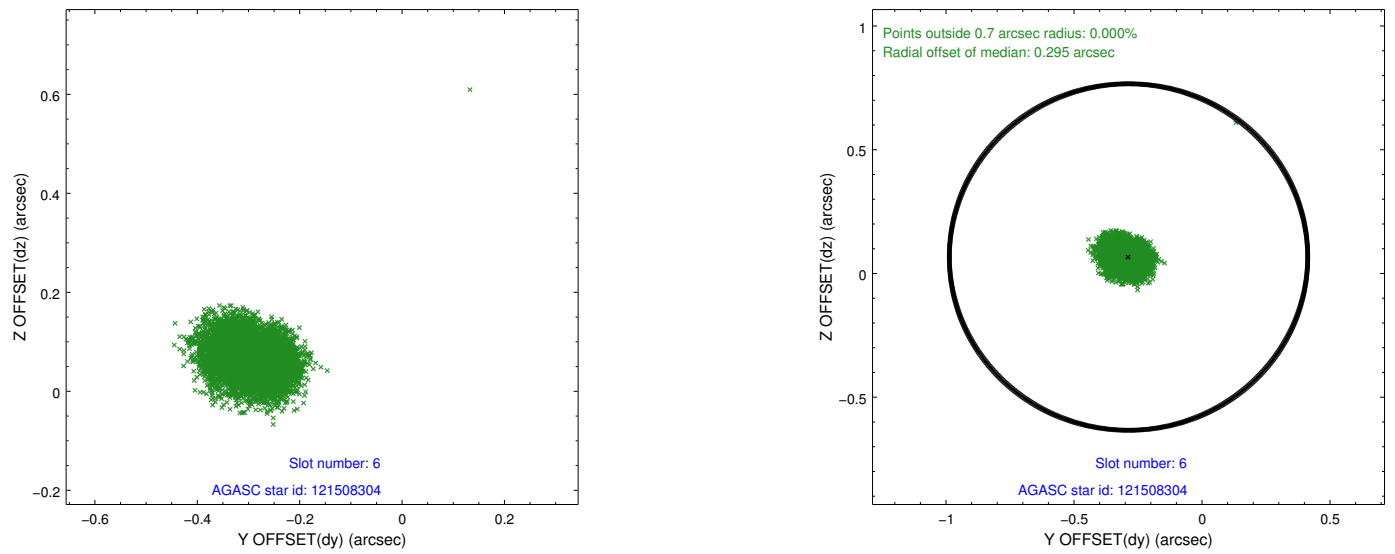
2.4.2 Slot 4



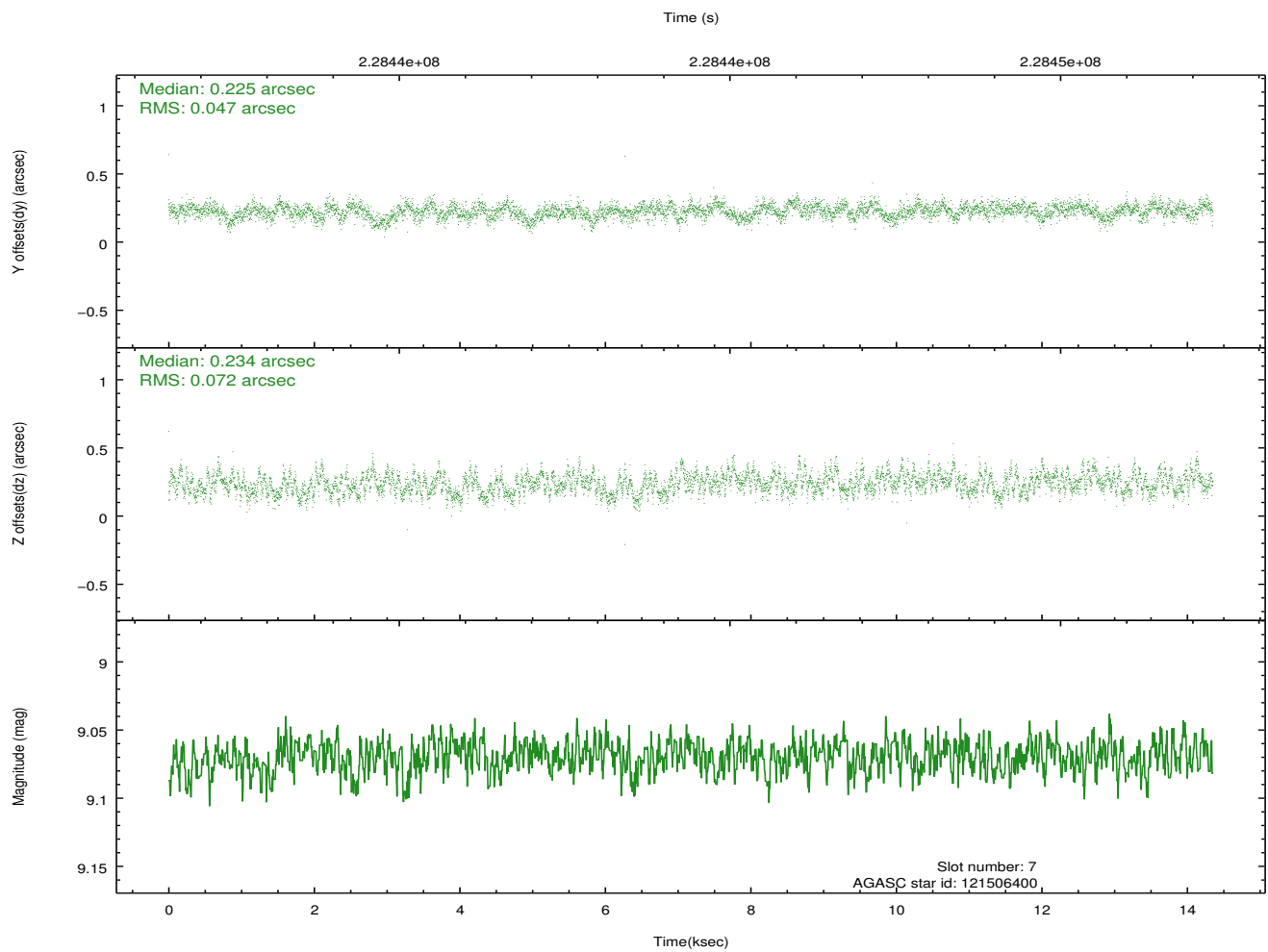
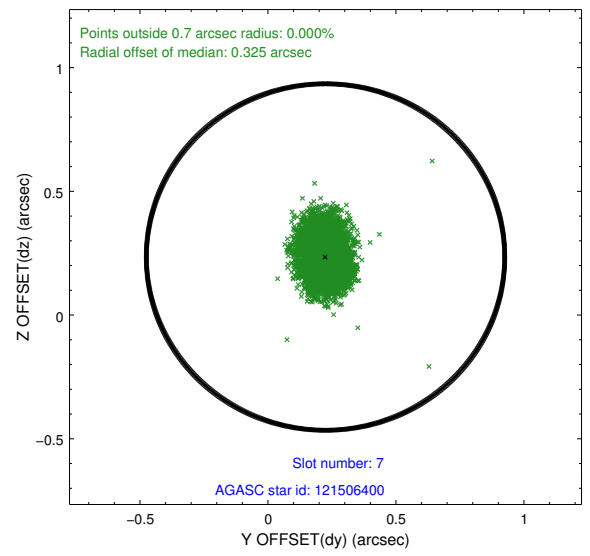
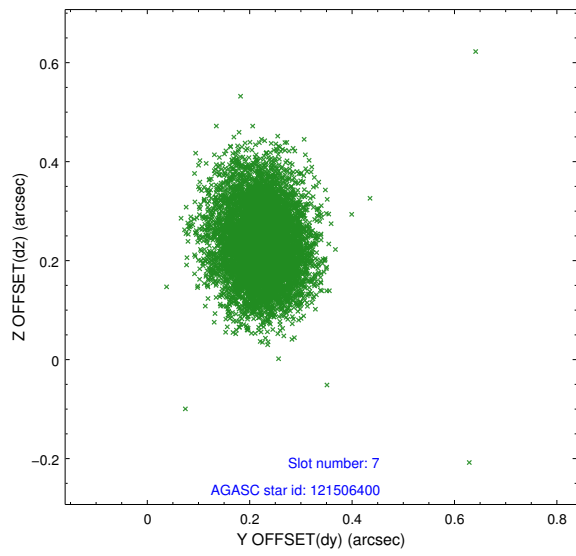
2.4.3 Slot 5



2.4.4 Slot 6

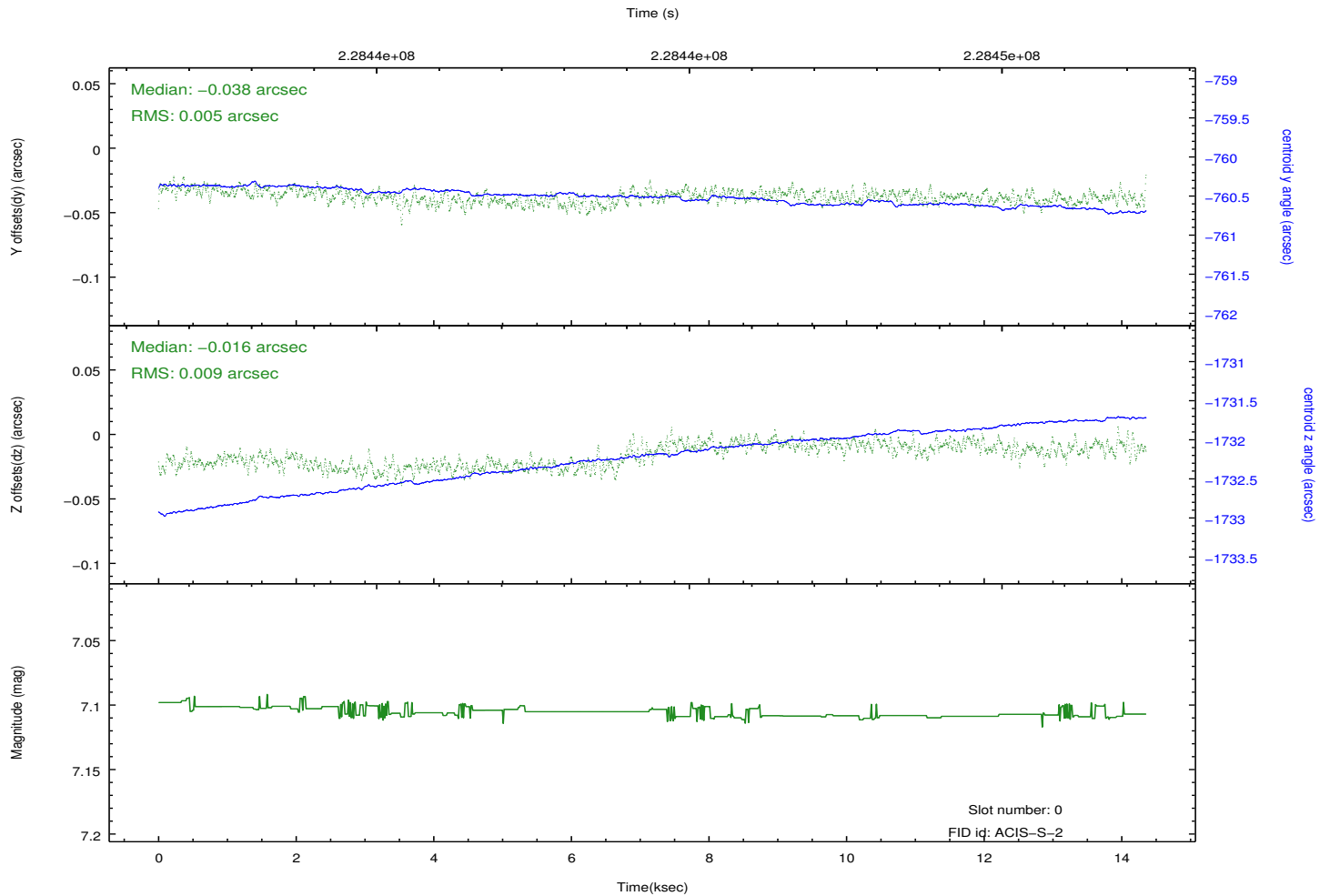
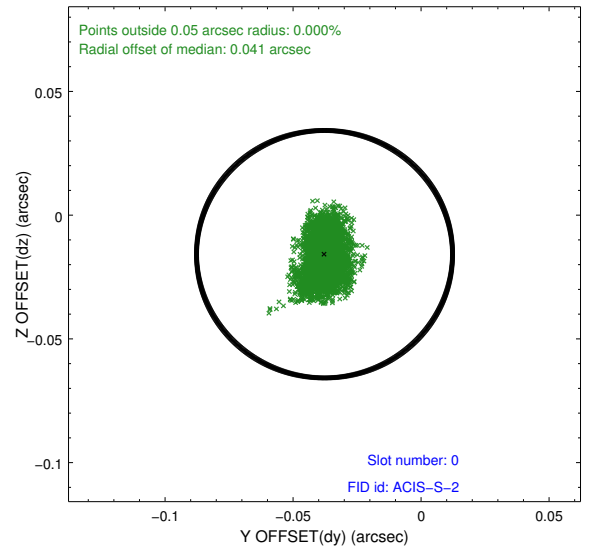
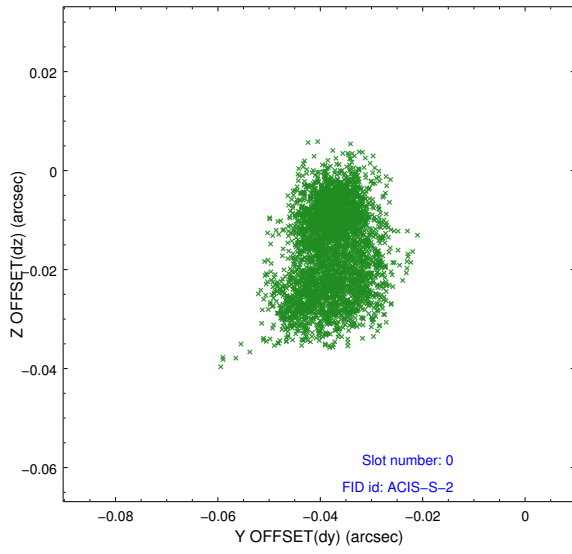


2.4.5 Slot 7

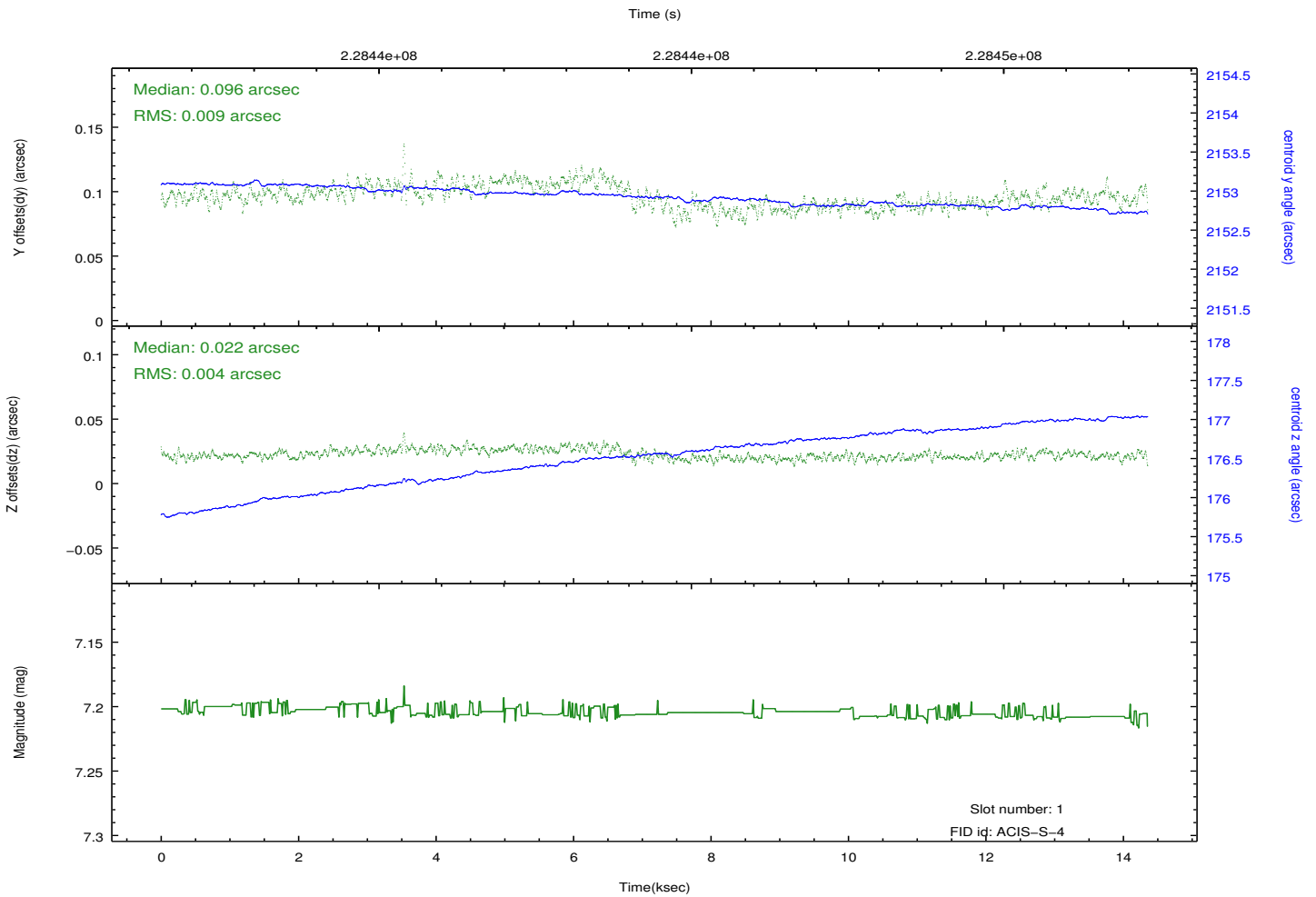
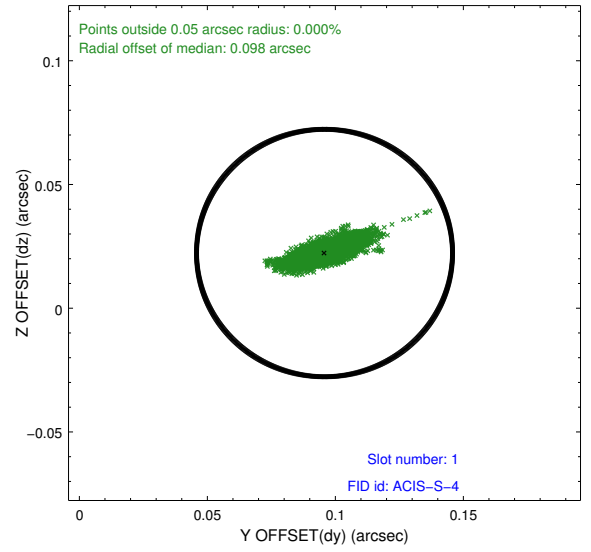
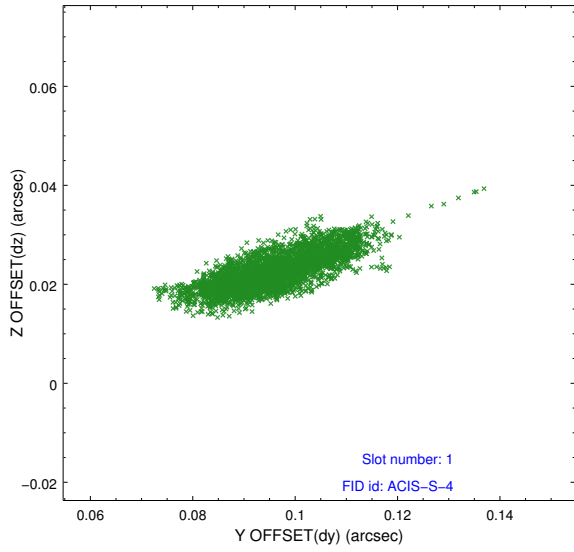


2.5 FID Slots

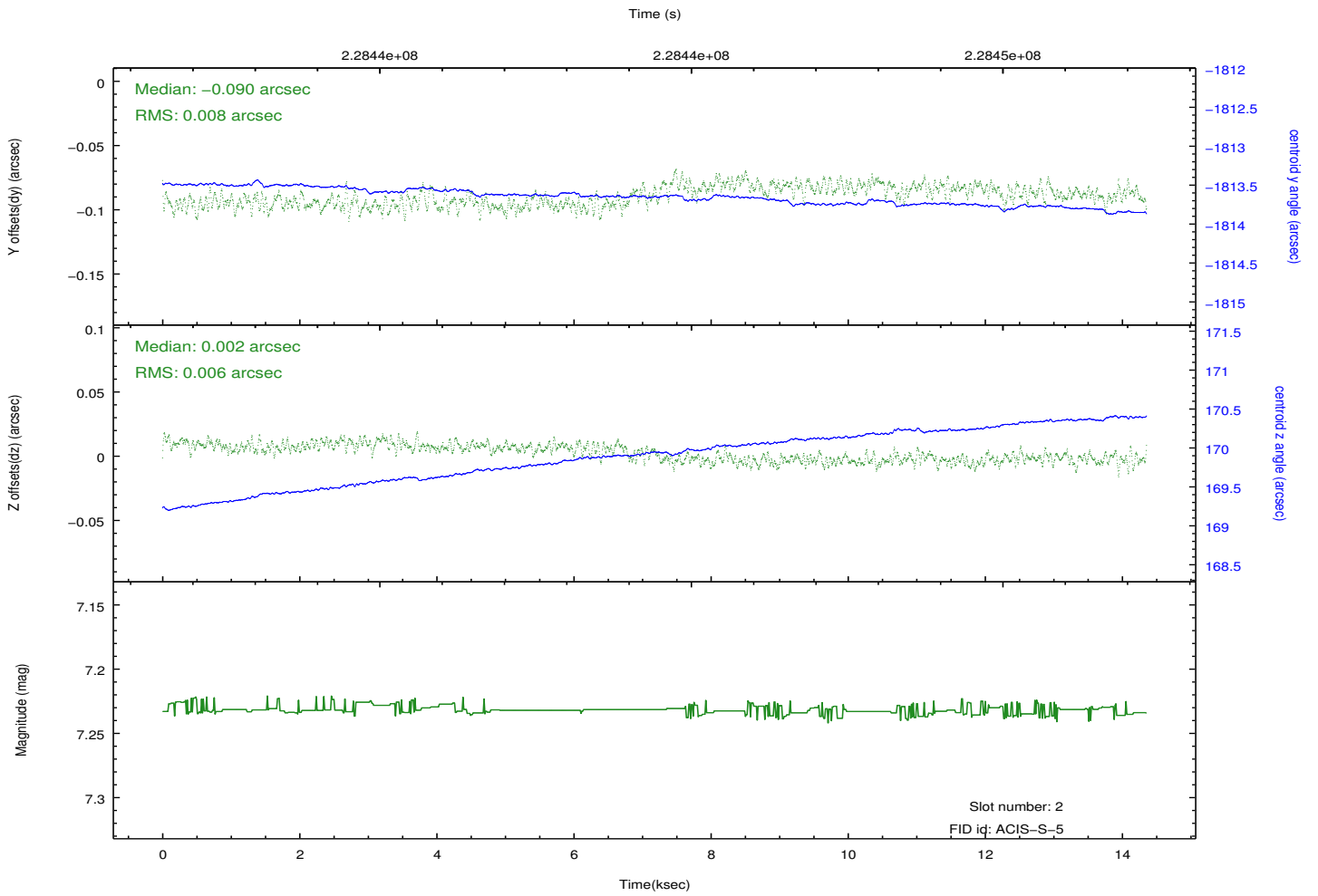
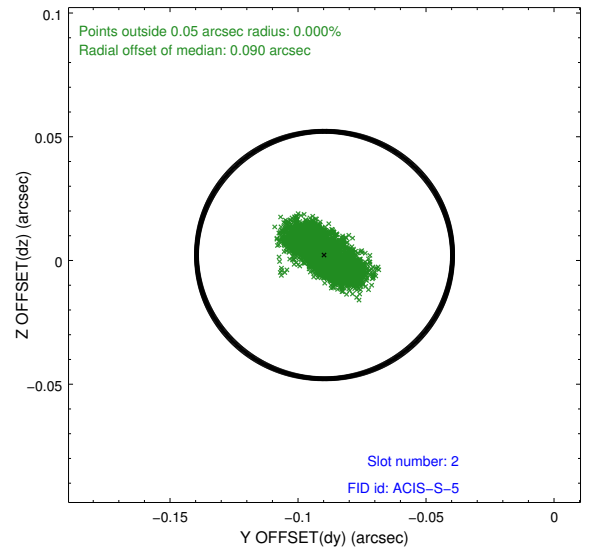
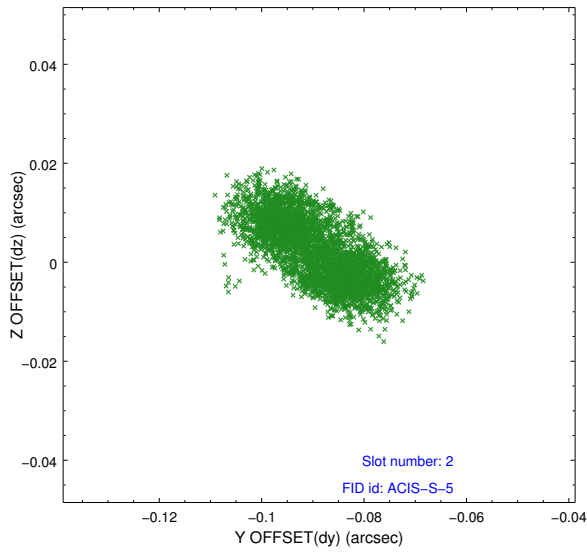
2.5.1 Slot 0



2.5.2 Slot 1



2.5.3 Slot 2



A Summary

A.1 Status

V&V Scientist	Beth Sundheim
V&V Date (YYYY-MM-DD)	2013.01.14
V&V Edition	1
V&V Disposition and Status	OK
V&V Charge Time	14.34989

A.2 Comments