

# V&V Reference Report

## L2 ASCDS Version : 8.5.1.1

Observation 6292 - L2 Version 3  
Chandra X-Ray Center

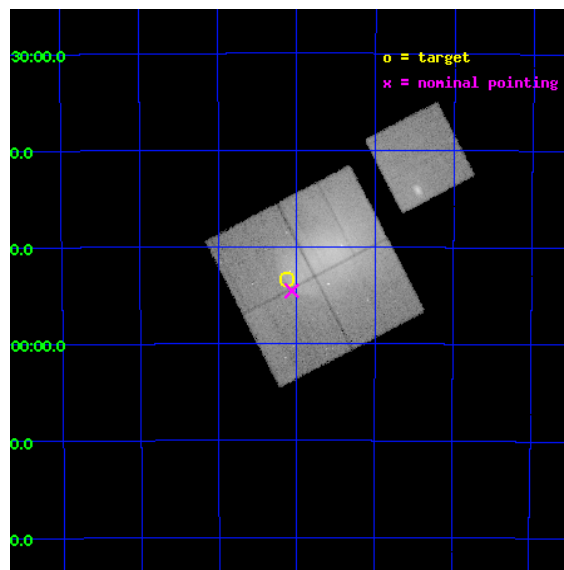
L2 Processing Date : Dec 24 2012

## Contents

<b>1</b>	<b>Front</b>	<b>2</b>
<b>2</b>	<b>OBI</b>	<b>3</b>
2.1	OBI . . . . .	3
2.1.1	Images . . . . .	3
2.1.2	Bias . . . . .	3
2.1.3	Parameters . . . . .	4
2.1.4	Events . . . . .	4
2.2	Compared Parameters . . . . .	5
2.3	Aspect . . . . .	6
2.4	Star Slots . . . . .	9
2.4.1	Slot 3 . . . . .	9
2.4.2	Slot 4 . . . . .	10
2.4.3	Slot 5 . . . . .	11
2.4.4	Slot 6 . . . . .	12
2.4.5	Slot 7 . . . . .	13
2.5	FID Slots . . . . .	14
2.5.1	Slot 0 . . . . .	14
2.5.2	Slot 1 . . . . .	15
2.5.3	Slot 2 . . . . .	16
<b>A</b>	<b>Summary</b>	<b>17</b>
A.1	Status . . . . .	17
A.2	Comments . . . . .	17

# 1 Front

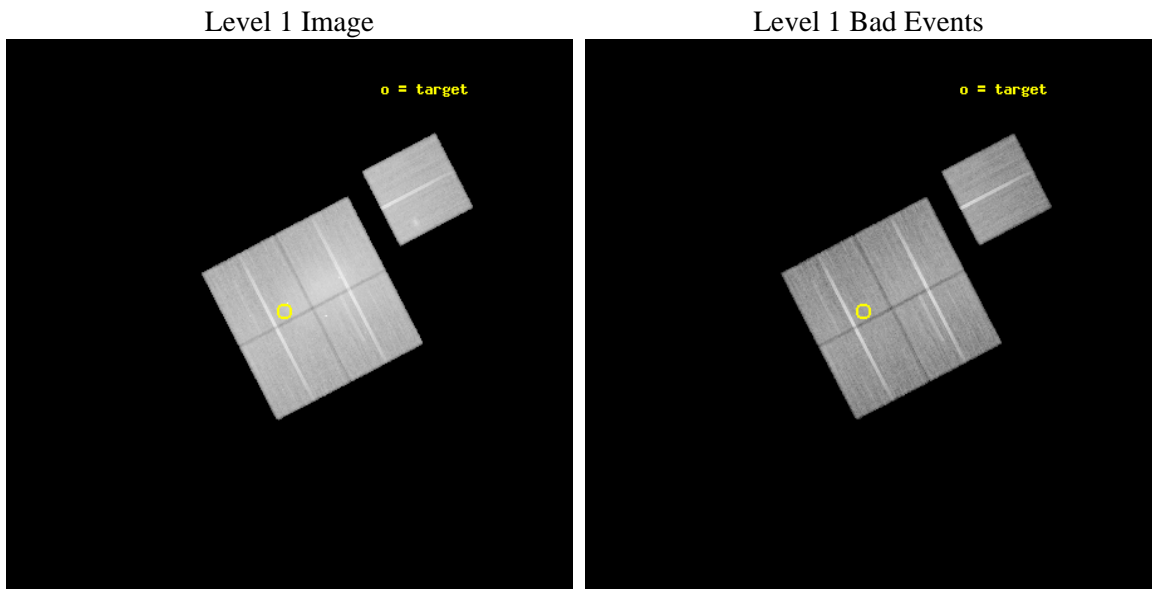
seq_num	800466	Sequence number
obs_id	6292	Observation id
title	A CHANDRA TREASURY OBSERVATION OF THE BEST EXAMPLE OF A CLUSTER COLD FRONT	Proposal title
observer	Dr. Alexey Vikhlinin	Principal investigator
object	Abell 3667	Source name
dtcycle	0	&#160
cycle	P	events from which exps? Prim/Second/Both
ra_targ	303.280208	Observer's specified target RA [deg]
dec_targ	-56.89	Observer's specified target Dec [deg]
ra_nom	303.26550777638	Nominal RA [deg]
dec_nom	-56.909163548362	Nominal Dec [deg]
roll_nom	62.534684805729	Nominal Roll [deg]
revision	3	Processing version of data
ontime	47287.317938536	Sum of GTIs [s]
livetime	46669.474317252	Livetime [s]
ontime0	47287.317938536	Sum of GTIs [s]
ontime1	47293.599909037	Sum of GTIs [s]
ontime2	47281.035977989	Sum of GTIs [s]
ontime3	47290.45891875	Sum of GTIs [s]
ontime6	47293.599909037	Sum of GTIs [s]
l2events	408026	Number of level 2 events



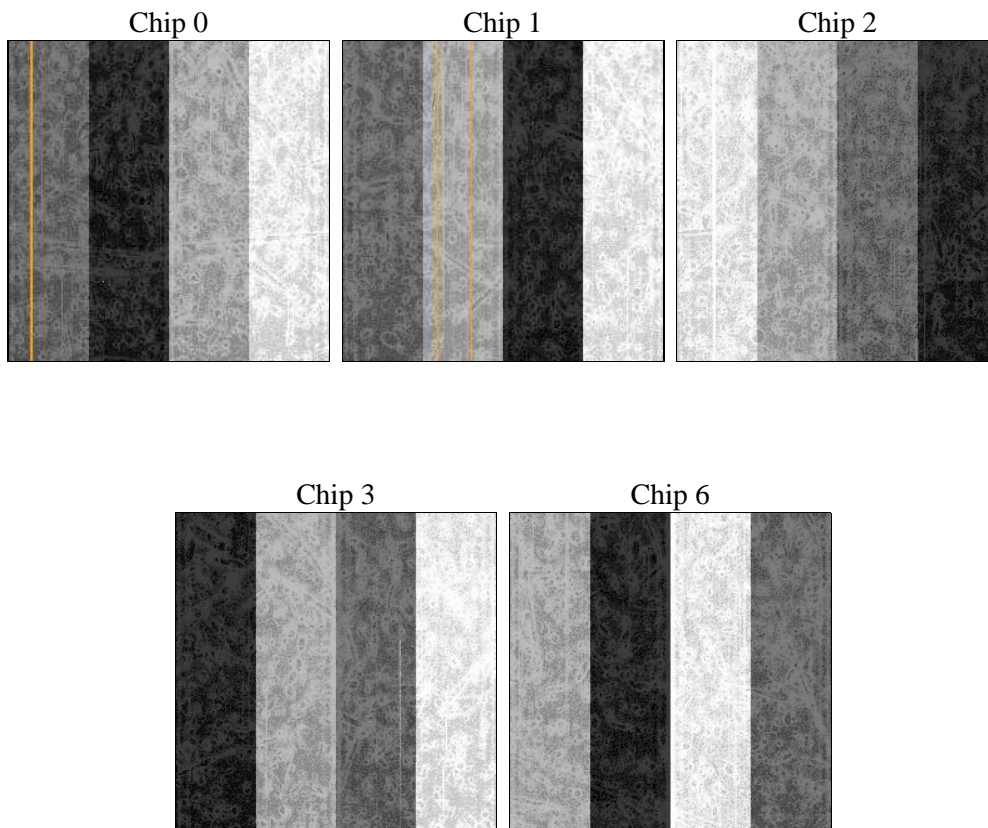
## 2 OBI

### 2.1 OBI

#### 2.1.1 Images



#### 2.1.2 Bias



### 2.1.3 Parameters

obi_num	1	Obi number	sched_exp_time	47243.320000	[s] Scheduled observation exposure time
ascdsver	8.5.1.1	Processing system revision	ontime	47287.317938536	Sum of GTIs [s]
caldbver	4.5.5	&#160	ontime0	47287.317938536	Sum of GTIs [s]
date	2012-12-24T16:06:48	Date and time of file creation	ontime1	47293.599909037	Sum of GTIs [s]
revision	3	Processing version of data	ontime2	47281.035977989	Sum of GTIs [s]
			ontime3	47290.45891875	Sum of GTIs [s]
			ontime6	47293.599909037	Sum of GTIs [s]
			l1events	1810459	Number of level 1 events

### 2.1.4 Events

	ccd 0	ccd 1	ccd 2	ccd 3	ccd 6
level 1 events	340543	312546	458586	360972	337812
rejected events	260468	252913	292160	276635	275440
rejected %	76%	80%	63%	76%	81%

	ccd 0	ccd 1	ccd 2	ccd 3	ccd 6
grade 0 events	50631	32767	122186	55831	36402
	14%	10%	26%	15%	10%
grade 1 events	324	228	814	408	229
	0%	0%	0%	0%	0%
grade 2 events	12233	10026	20324	11631	9739
	3%	3%	4%	3%	2%
grade 3 events	5130	4605	7517	4959	4500
	1%	1%	1%	1%	1%
grade 4 events	4860	4556	7554	4791	4362
	1%	1%	1%	1%	1%
grade 5 events	11284	11964	10973	12605	12309
	3%	3%	2%	3%	3%
grade 6 events	7228	7682	8856	7130	7374
	2%	2%	1%	1%	2%
grade 7 events	248853	240718	280362	263617	262897
	73%	77%	61%	73%	77%

## 2.2 Compared Parameters

Parameter	Planned	Actual	Parameter	Planned	Actual
Instrument	ACIS	ACIS	Obspar format version number	7	7
Detector	ACIS-01236	ACIS-01236	Obspar file type	PREDICTED	ACTUAL
Grating	NONE	NONE	Obspar update status	NONE	UPDATED
Data mode	VFAINT	VFAINT	Number of optional ACIS chips dropped	0	0
Observation mode	POINTING	POINTING	On-chip summing requested	N	N
[deg] Pointing RA	303.267930	303.2655077763836	Subarray requested	NONE	NONE
[deg] Pointing Dec	-56.936541	-56.90916354836169	Alternating exposures requested	N	N
[deg] Pointing Roll	62.328022	62.53468480572948	[s] Primary exposure time	0.000000	3.1
[mm] SIM focus pos	-0.782348	-0.7809083437167272			
[mm] SIM defocus	0	0.001439871863259334			
[mm] SIM translation stage pos	-243.592463	-243.5843520998312			
[mm] SIM translation stage offset	10	9.991899096901562			
[s] Observation start time (MET)	234804460.184000	234803356.0791			
Observation start date	2005-06-10T15:26:36	2005-06-10T15:09:16			
[s] Observation end time (MET)	234851703.184000	234851935.95631			
Observation end date	2005-06-11T04:33:59	2005-06-11T04:38:55			
Read mode	TIMED	TIMED			

## 2.3 Aspect

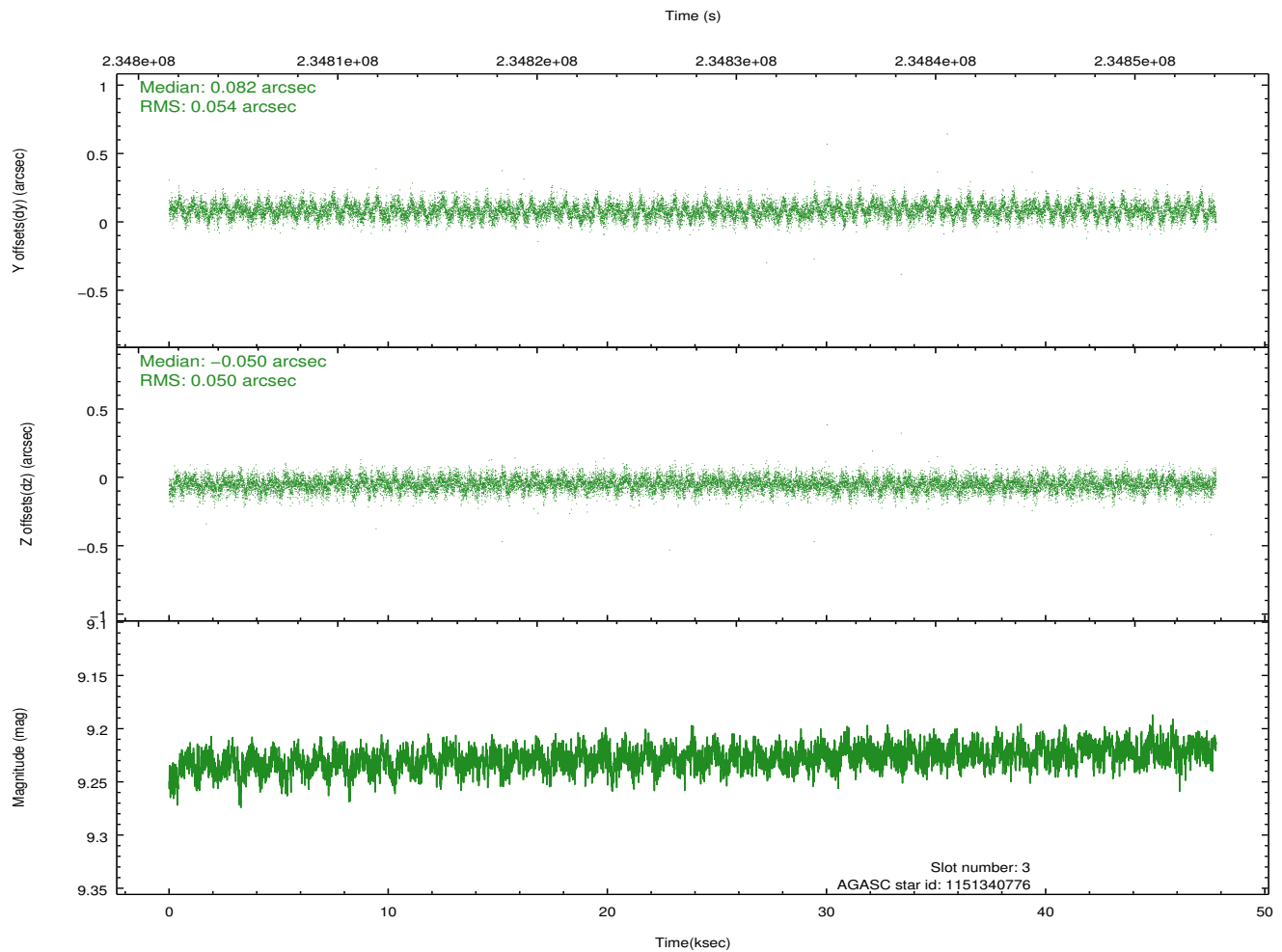
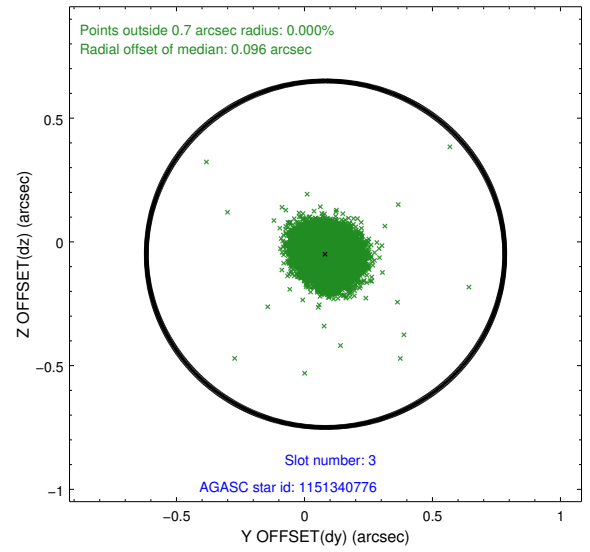
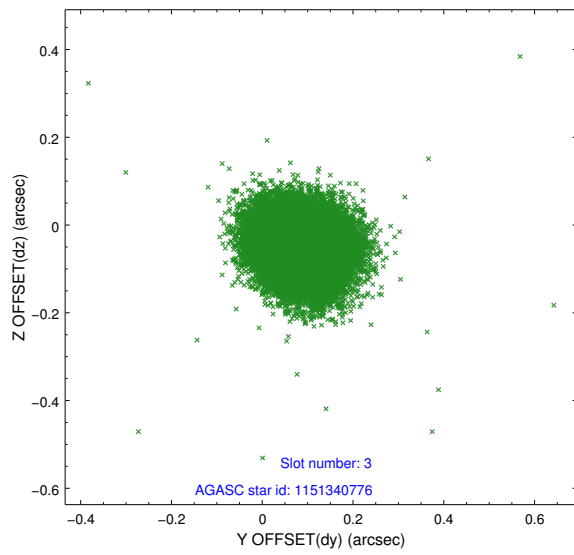


### Slot Statistics

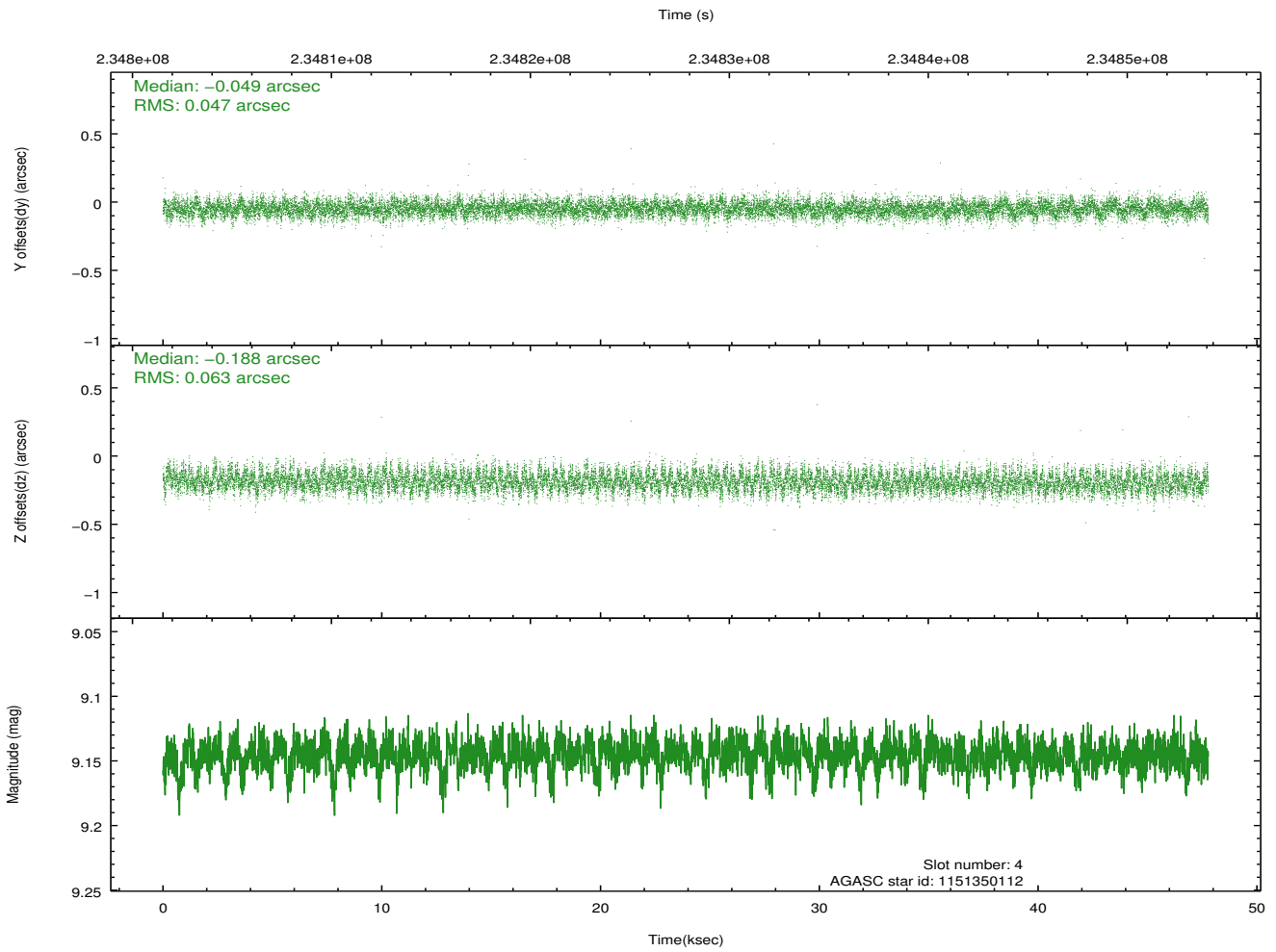
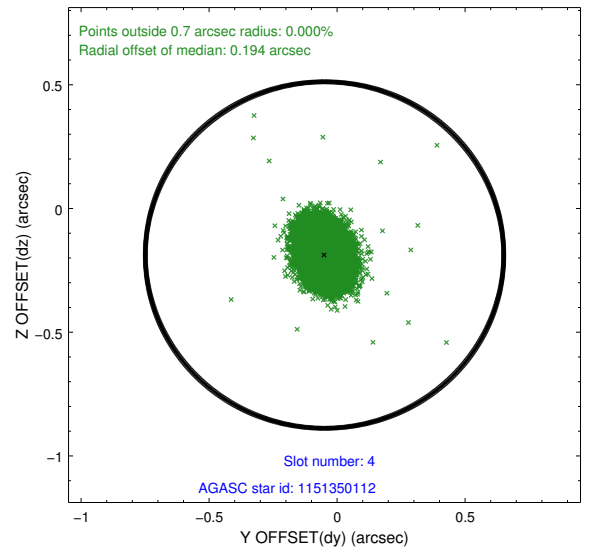
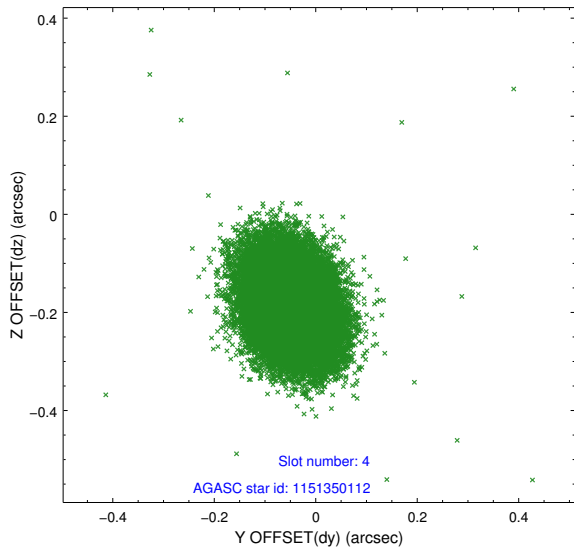
slot	status	id	mag	n_pts	med_dy	med_dz	dr1	dr2	ra	dec	mean_y	mean_z
0	FID	ACIS-I-1	7.28	11653	-0.022	0.057	0.011	0.019	0.000000	0.000000	933.46	-627.14
1	FID	ACIS-I-5	7.24	11652	-0.114	0.018	0.007	0.013	0.000000	0.000000	-1814.73	1270.34
2	FID	ACIS-I-6	7.24	11654	0.045	-0.005	0.013	0.022	0.000000	0.000000	399.10	1914.78
3	GUIDE	1151340776	9.23	23296	0.082	-0.050	0.078	0.126	302.320116	-57.331751	-2126.40	964.42
4	GUIDE	1151350112	9.15	23289	-0.049	-0.188	0.082	0.135	303.241865	-56.846660	262.83	195.80
5	GUIDE	1151472992	9.63	23293	0.029	0.181	0.109	0.177	303.531180	-57.237033	-720.35	-956.71
6	GUIDE	1151471240	9.46	23290	0.183	-0.026	0.088	0.142	303.425045	-57.451391	-1499.95	-1130.43
7	GUIDE	1151467856	9.64	23257	-0.244	0.087	0.127	0.208	303.931677	-56.775960	1114.46	-893.67

## 2.4 Star Slots

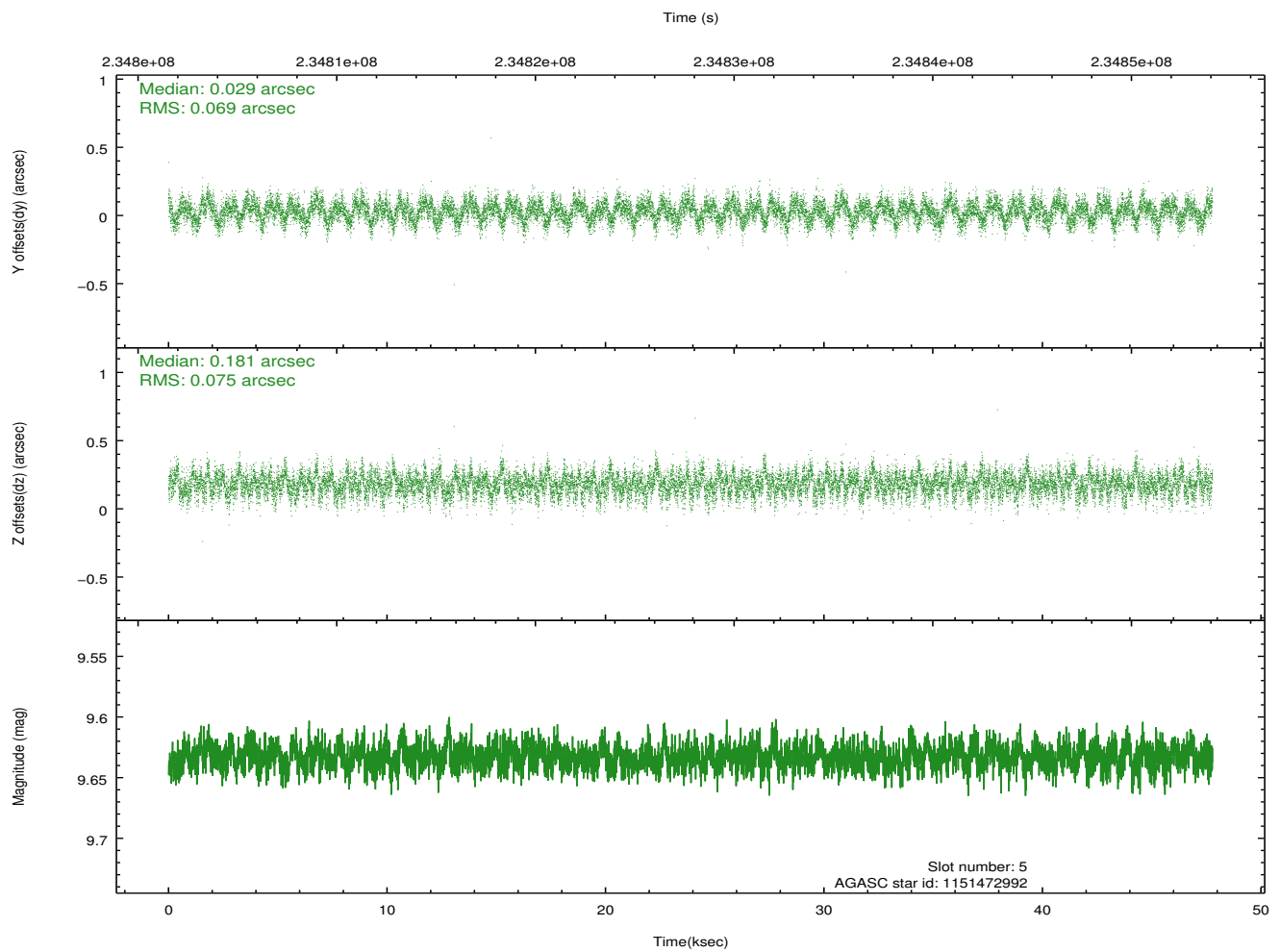
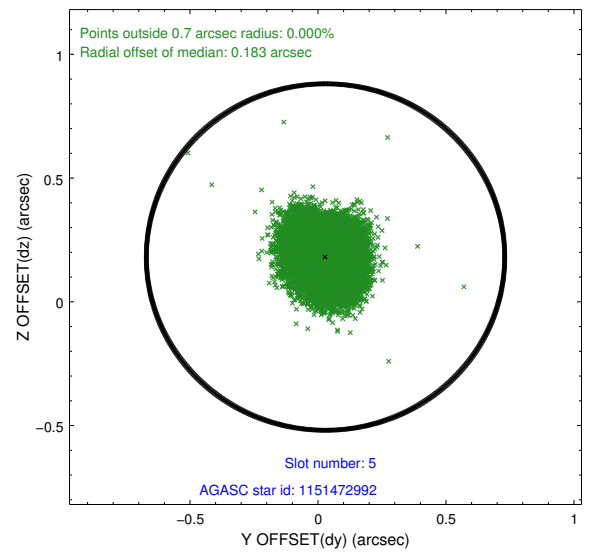
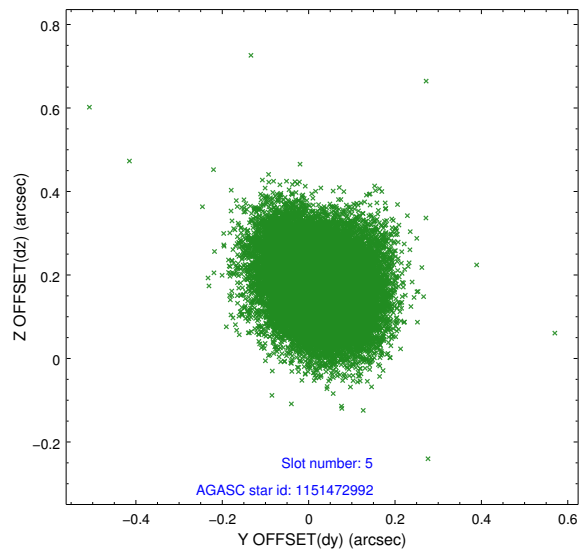
### 2.4.1 Slot 3



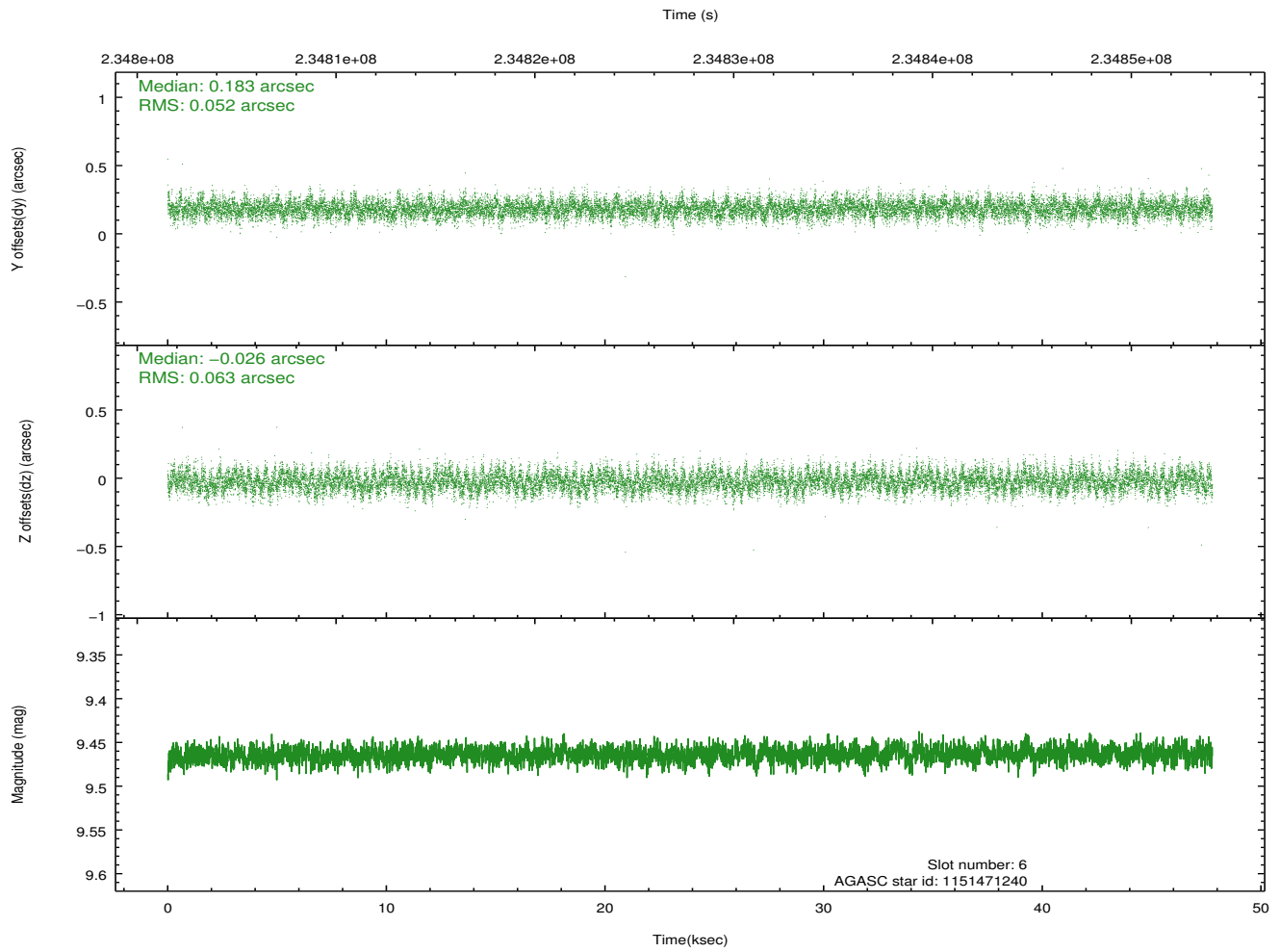
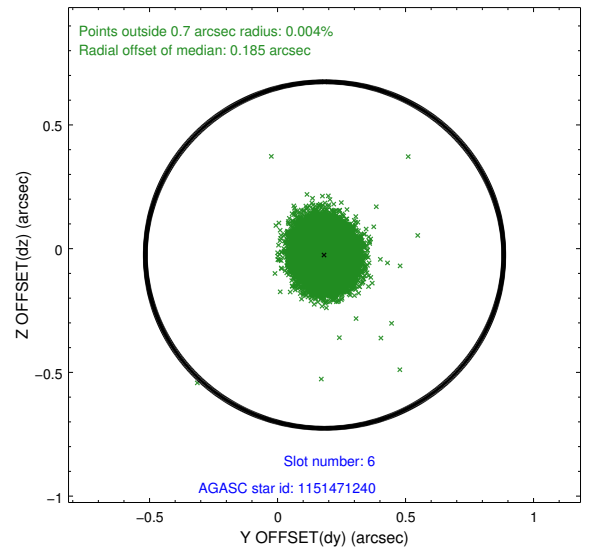
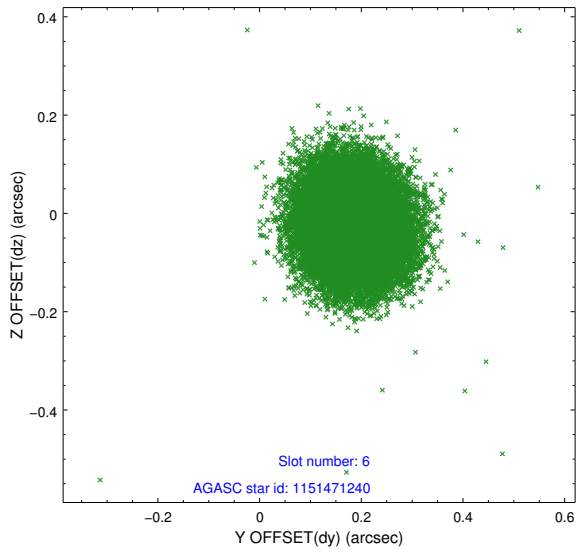
### 2.4.2 Slot 4



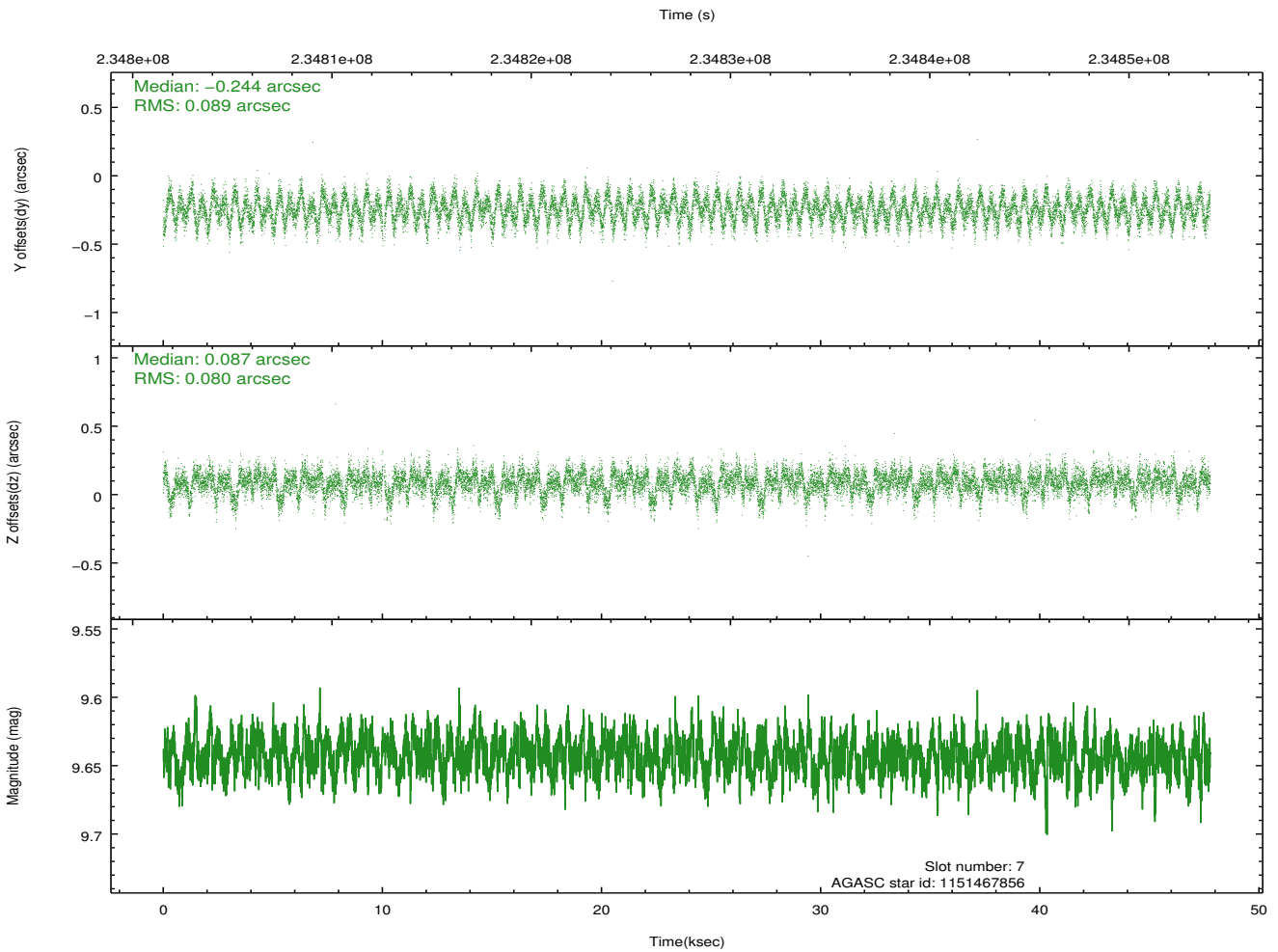
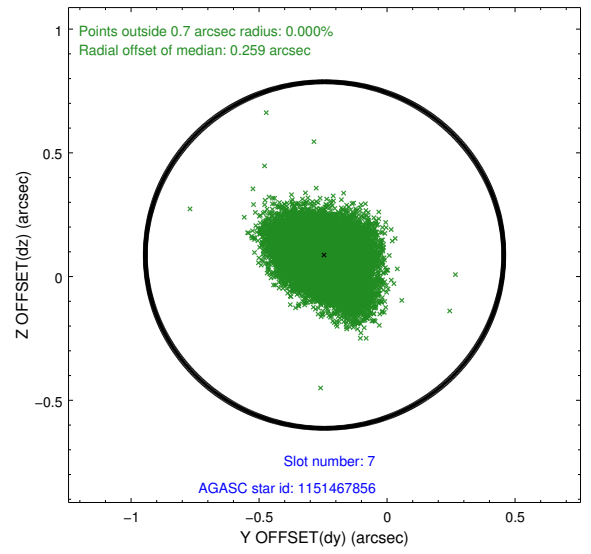
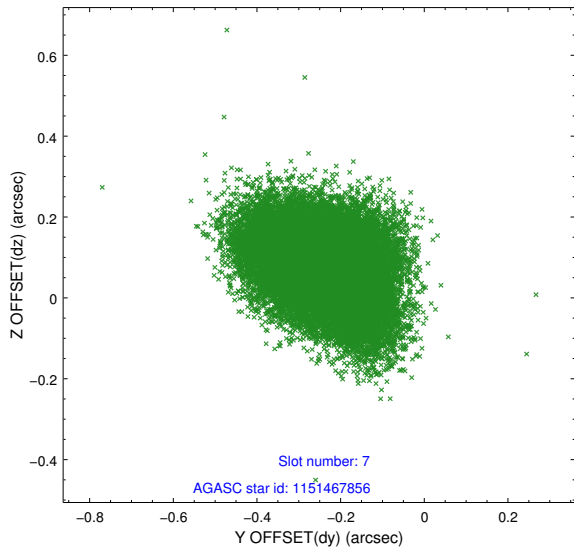
### 2.4.3 Slot 5



### 2.4.4 Slot 6

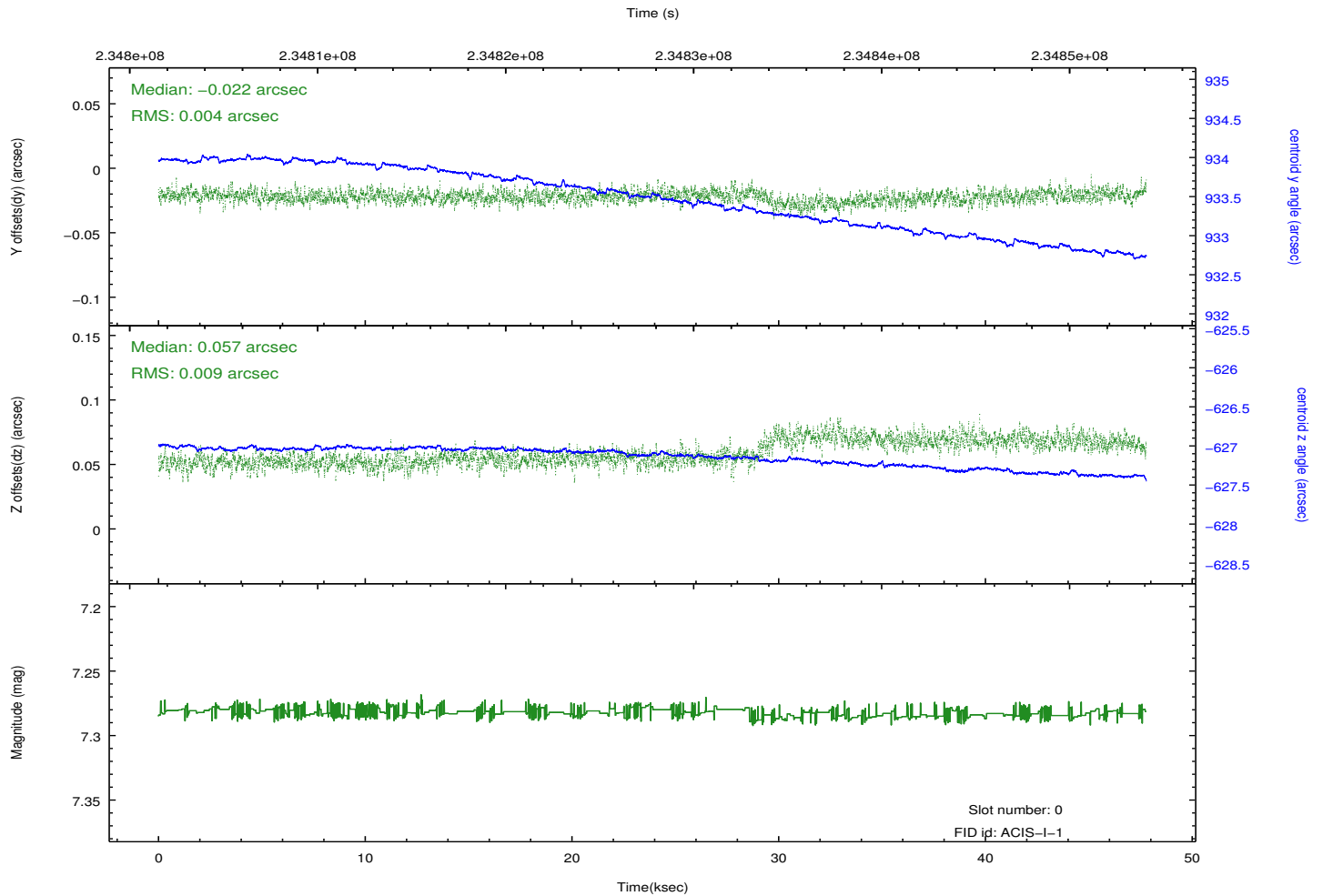
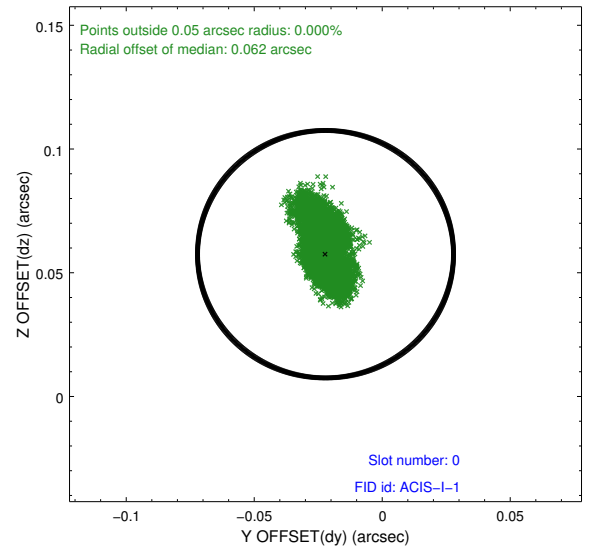
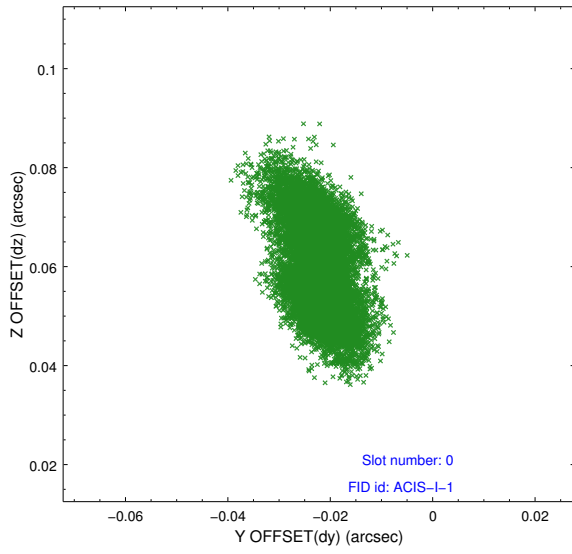


### 2.4.5 Slot 7

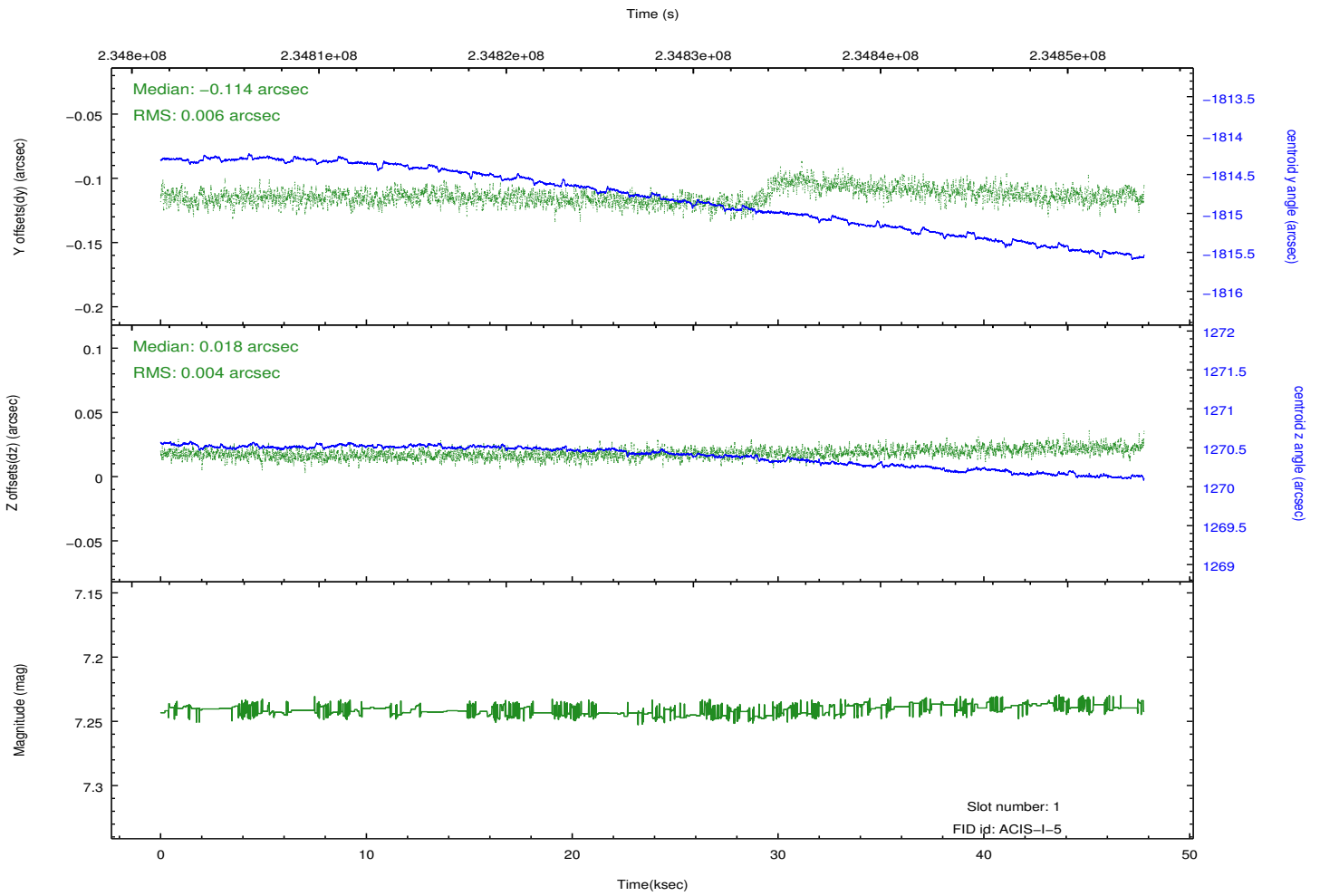
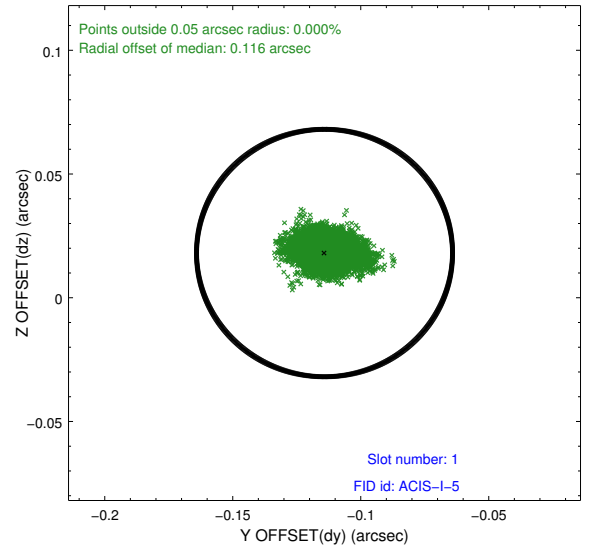
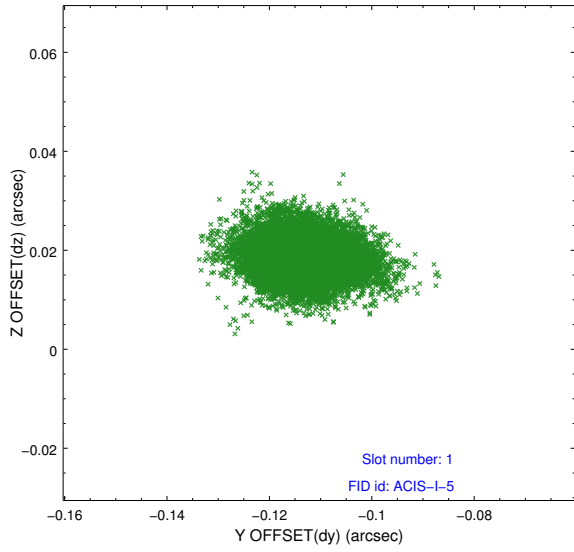


## 2.5 FID Slots

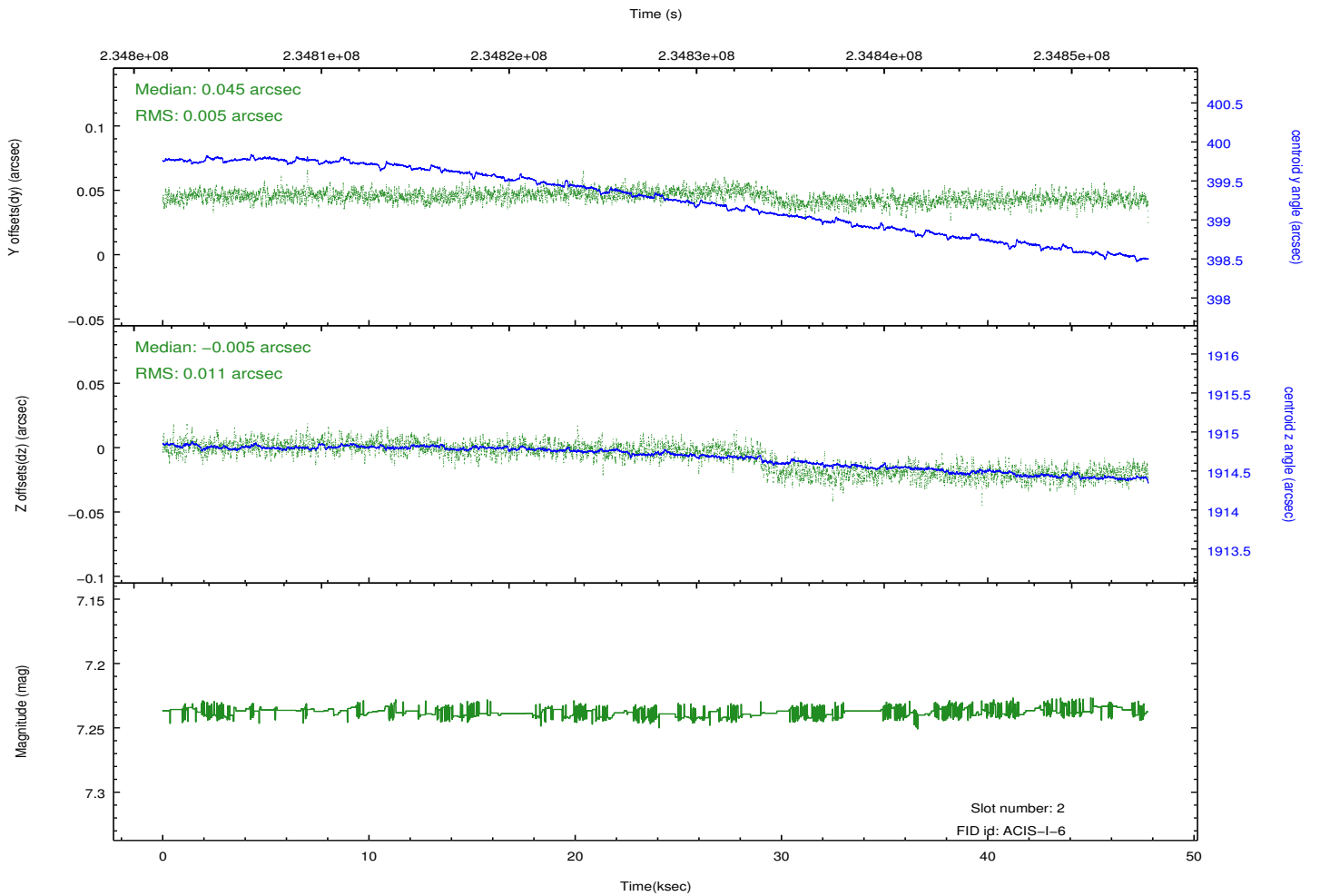
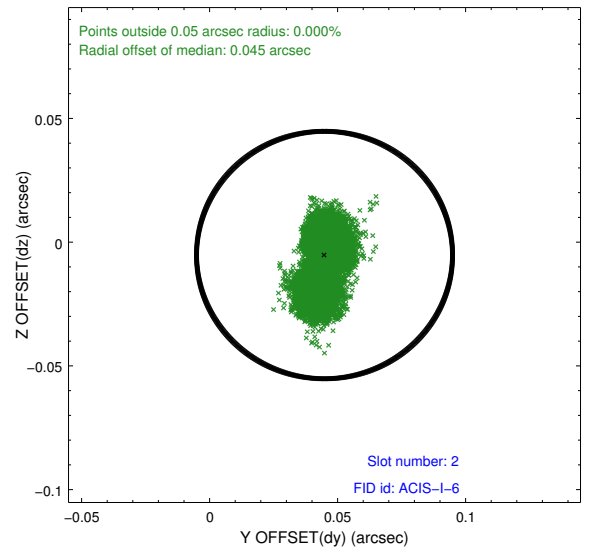
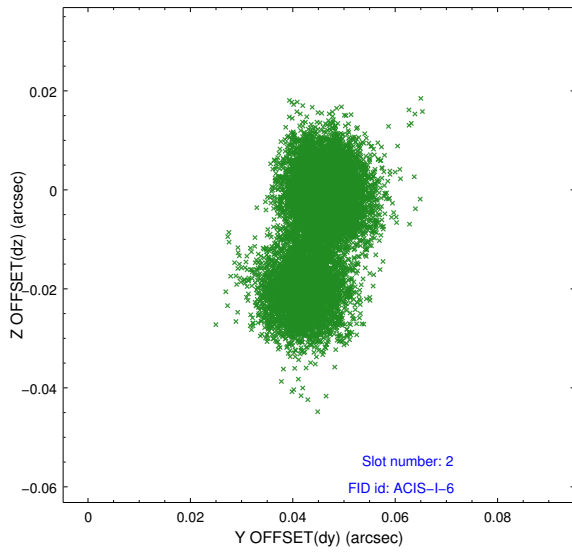
### 2.5.1 Slot 0



## 2.5.2 Slot 1



### 2.5.3 Slot 2



# A Summary

## A.1 Status

V&V Scientist	Jen Lauer
V&V Date (YYYY-MM-DD)	2013.01.17
V&V Edition	1
V&V Disposition and Status	OK
V&V Charge Time	47.28731

## A.2 Comments