

# V&V Reference Report

## L2 ASCDS Version : 8.5.1.1

Observation 6342 - L2 Version 3  
Chandra X-Ray Center

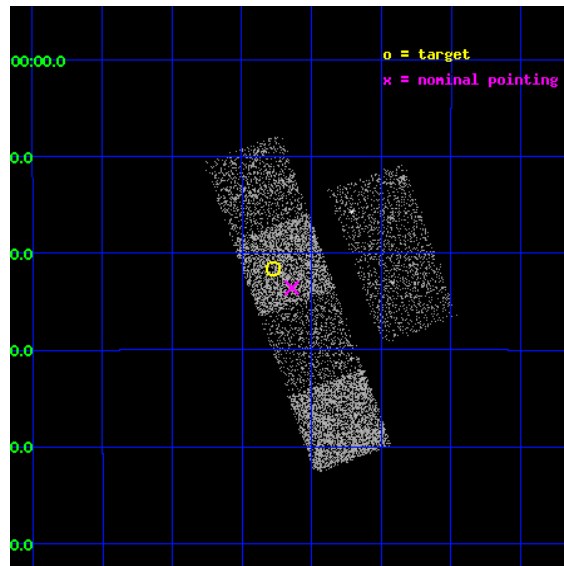
L2 Processing Date : Dec 25 2012

## Contents

<b>1</b>	<b>Front</b>	<b>2</b>
<b>2</b>	<b>OBI</b>	<b>3</b>
2.1	OBI . . . . .	3
2.1.1	Images . . . . .	3
2.1.2	Bias . . . . .	3
2.1.3	Parameters . . . . .	4
2.1.4	Events . . . . .	4
2.2	Compared Parameters . . . . .	5
2.3	Aspect . . . . .	6
2.4	Star Slots . . . . .	9
2.4.1	Slot 3 . . . . .	9
2.4.2	Slot 4 . . . . .	10
2.4.3	Slot 5 . . . . .	11
2.4.4	Slot 6 . . . . .	12
2.4.5	Slot 7 . . . . .	13
2.5	FID Slots . . . . .	14
2.5.1	Slot 0 . . . . .	14
2.5.2	Slot 1 . . . . .	15
2.5.3	Slot 2 . . . . .	16
<b>A</b>	<b>Summary</b>	<b>17</b>
A.1	Status . . . . .	17
A.2	Comments . . . . .	17

# 1 Front

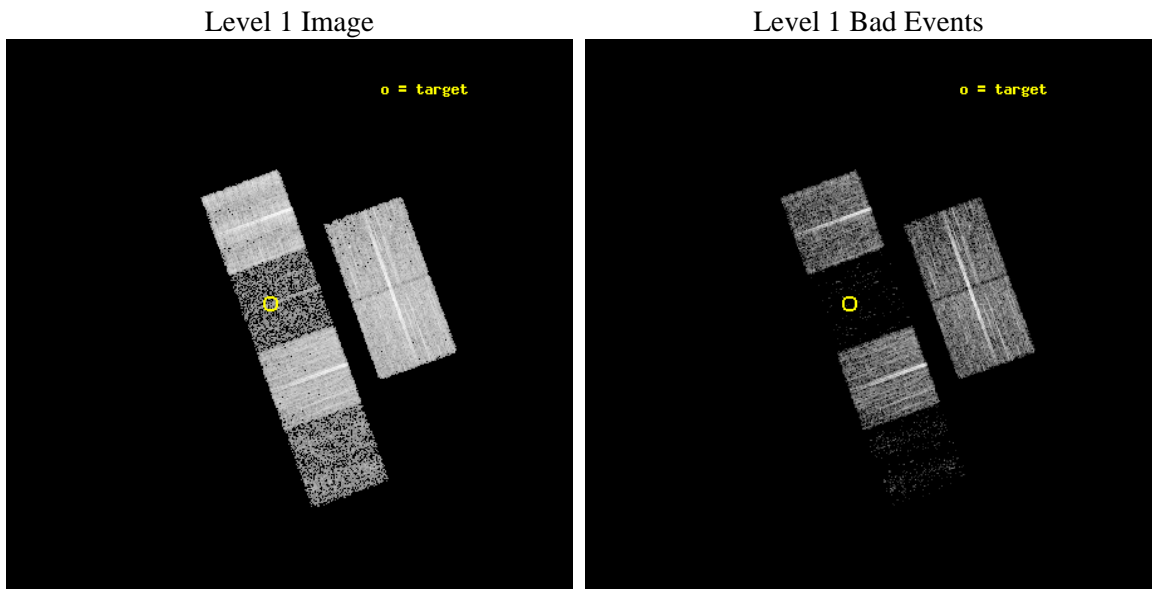
seq_num	100057	Sequence number
obs_id	6342	Observation id
title	Comet 9P/Tempel 1 During the Deep Impact Encounter	Proposal title
observer	Dr. Carey Lisse	Principal investigator
object	9P/Tempel 1	Source name
dtcycle	0	&#160
cycle	P	events from which exps? Prim/Second/Both
ra_targ	209.192981	Observer's specified target RA [deg]
dec_targ	-13.35923	Observer's specified target Dec [deg]
ra_nom	209.16022383177	Nominal RA [deg]
dec_nom	-13.39316479882	Nominal Dec [deg]
roll_nom	250.09866561918	Nominal Roll [deg]
revision	3	Processing version of data
ontime	8502.3999683261	Sum of GTIs [s]
livetime	8394.7374603965	Livetime [s]
ontime2	8502.3999683261	Sum of GTIs [s]
ontime3	8495.9180277586	Sum of GTIs [s]
ontime5	8502.3999683261	Sum of GTIs [s]
ontime6	8502.3999683261	Sum of GTIs [s]
ontime7	8502.3999683261	Sum of GTIs [s]
ontime8	8502.3999683261	Sum of GTIs [s]
l2events	12288	Number of level 2 events



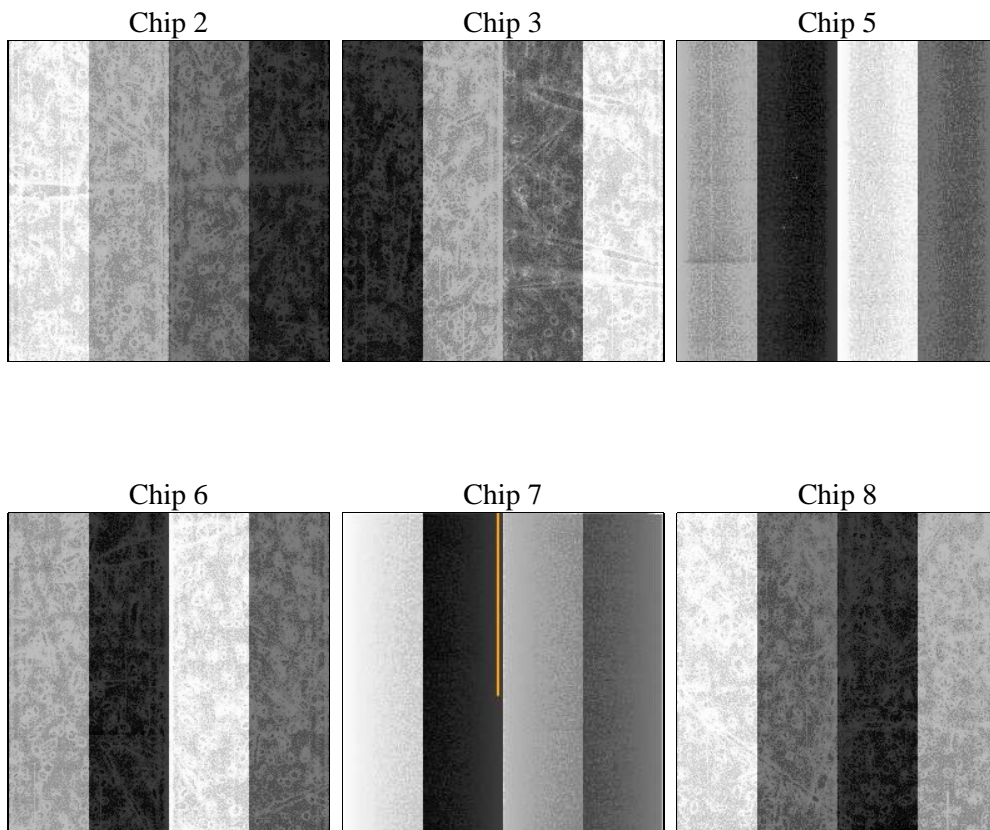
## 2 OBI

### 2.1 OBI

#### 2.1.1 Images



#### 2.1.2 Bias



### 2.1.3 Parameters

obi_num	1	Obi number	sched_exp_time	8325.000000	[s] Scheduled observation exposure time
ascdsver	8.5.1.1	Processing system revision	ontime	8502.3999683261	Sum of GTIs [s]
caldsver	4.5.5	&#160	ontime2	8502.3999683261	Sum of GTIs [s]
date	2012-12-26T00:20:39	Date and time of file creation	ontime3	8495.9180277586	Sum of GTIs [s]
revision	3	Processing version of data	ontime5	8502.3999683261	Sum of GTIs [s]
			ontime6	8502.3999683261	Sum of GTIs [s]
			ontime7	8502.3999683261	Sum of GTIs [s]
			ontime8	8502.3999683261	Sum of GTIs [s]
			l1events	173461	Number of level 1 events

### 2.1.4 Events

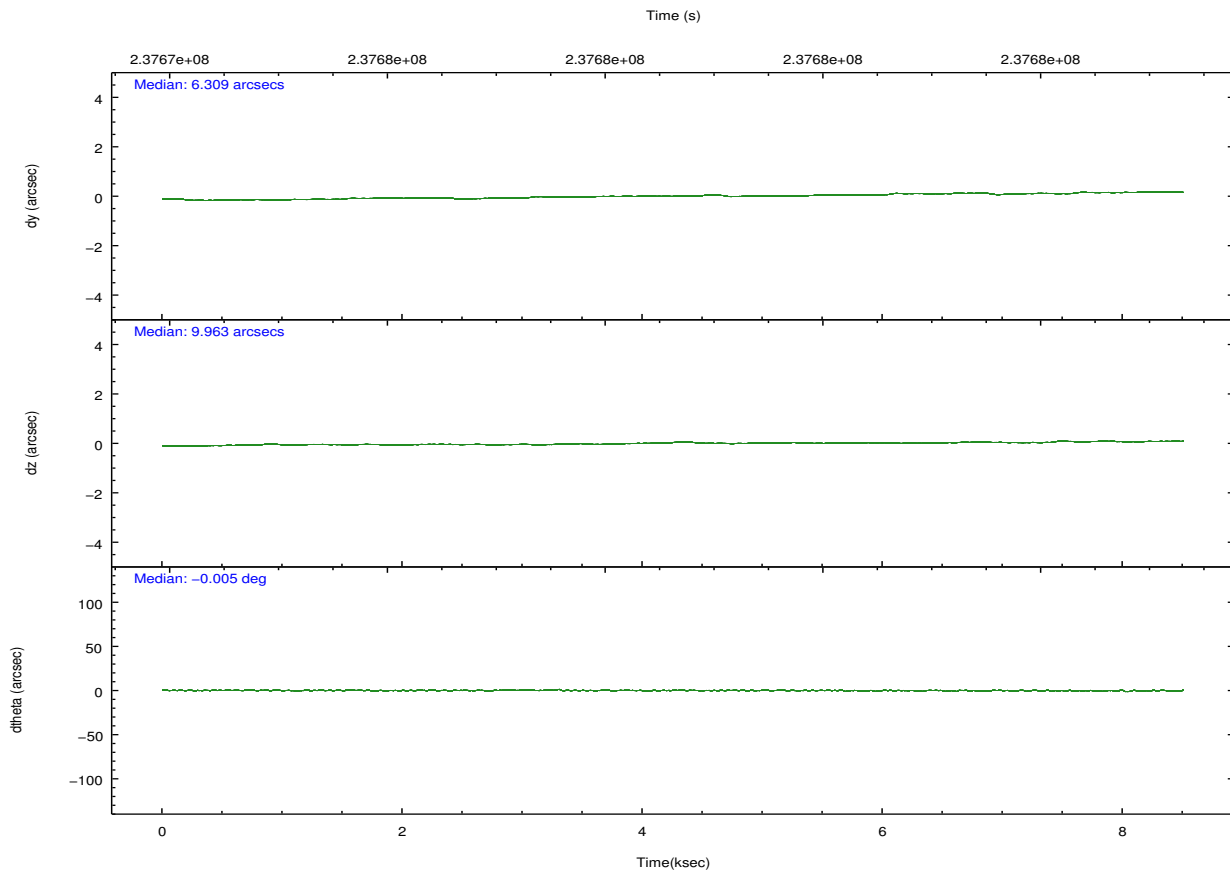
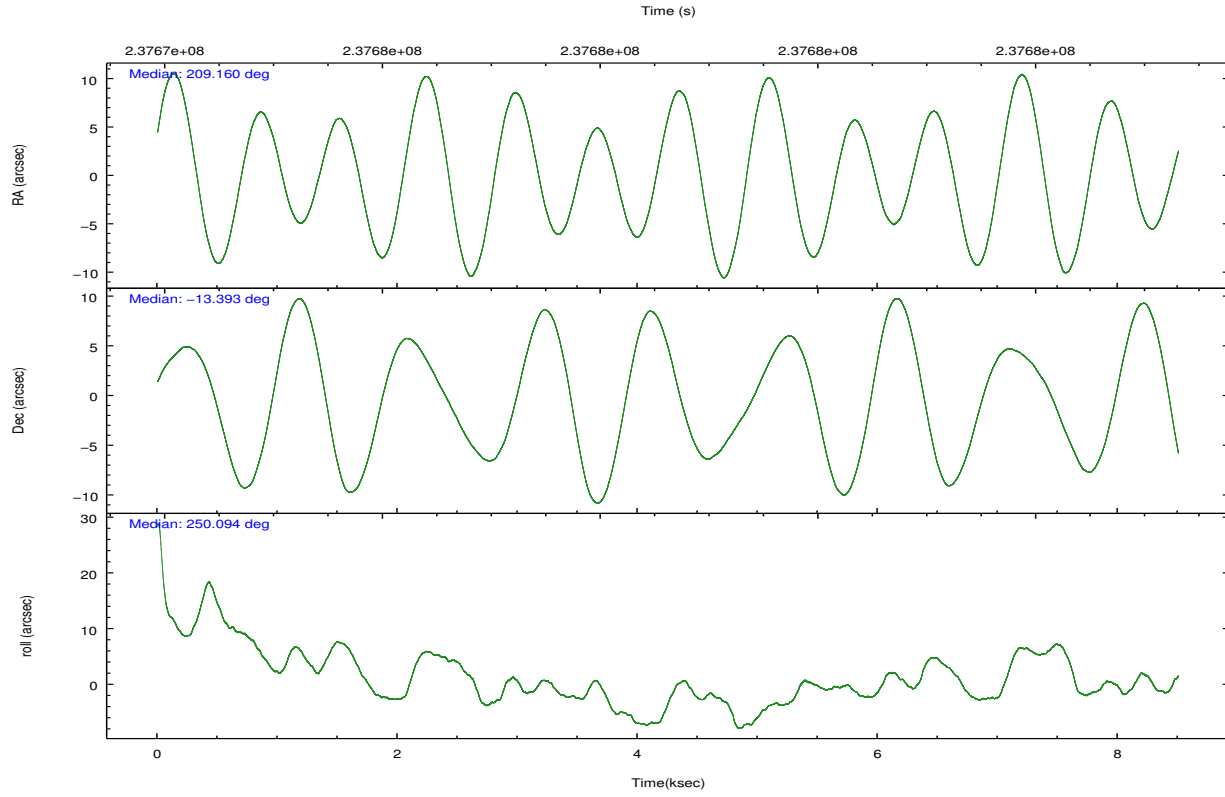
	ccd 2	ccd 3	ccd 5	ccd 6	ccd 7	ccd 8
level 1 events	42830	34981	6738	36893	5232	46787
rejected events	40882	33624	2261	35271	1143	32730
rejected %	95%	96%	33%	95%	21%	69%

	ccd 2	ccd 3	ccd 5	ccd 6	ccd 7	ccd 8
grade 0 events	869	691	1248	832	1156	3913
	2%	1%	18%	2%	22%	8%
grade 1 events	15	9	39	13	18	44
	0%	0%	0%	0%	0%	0%
grade 2 events	543	188	1676	332	1286	2923
	1%	0%	24%	0%	24%	6%
grade 3 events	189	219	610	215	608	1930
	0%	0%	9%	0%	11%	4%
grade 4 events	257	197	615	198	661	1786
	0%	0%	9%	0%	12%	3%
grade 5 events	58	36	346	30	143	308
	0%	0%	5%	0%	2%	0%
grade 6 events	158	126	509	112	549	3984
	0%	0%	7%	0%	10%	8%
grade 7 events	40741	33515	1695	35161	811	31899
	95%	95%	25%	95%	15%	68%

## 2.2 Compared Parameters

Parameter	Planned	Actual	Parameter	Planned	Actual
Instrument	ACIS	ACIS	Obspar format version number	7	7
Detector	ACIS-235678	ACIS-235678	Obspar file type	PREDICTED	ACTUAL
Grating	NONE	NONE	Obspar update status	NONE	UPDATED
Data mode	VFAINT	VFAINT	Number of optional ACIS chips dropped	0	0
Observation mode	POINTING	POINTING	On-chip summing requested	N	N
[deg] Pointing RA	209.154910	209.1602238317688	Subarray requested	NONE	NONE
[deg] Pointing Dec	-13.366470	-13.39316479881968	Alternating exposures requested	N	N
[deg] Pointing Roll	249.940809	250.0986656191802	[s] Primary exposure time	0.000000	3.2
[s] Window start time (MET)	237708064.184000	237708064.184000			
[s] Window stop time (MET)	237751264.184000	237751264.184000			
[mm] SIM focus pos	-0.684267	-0.6828225247311905			
[mm] SIM defocus	0	0.001444936568705701			
[mm] SIM translation stage pos	-190.132523	-190.1400660498719			
[mm] SIM translation stage offset	0	0.00754346686406393			
[s] Observation start time (MET)	237674555.184000	237674179.28528			
Observation start date	2005-07-13T20:41:31	2005-07-13T20:36:19			
[s] Observation end time (MET)	237682880.184000	237683013.76068			
Observation end date	2005-07-13T23:00:16	2005-07-13T23:03:33			
Read mode	TIMED	TIMED			

## 2.3 Aspect

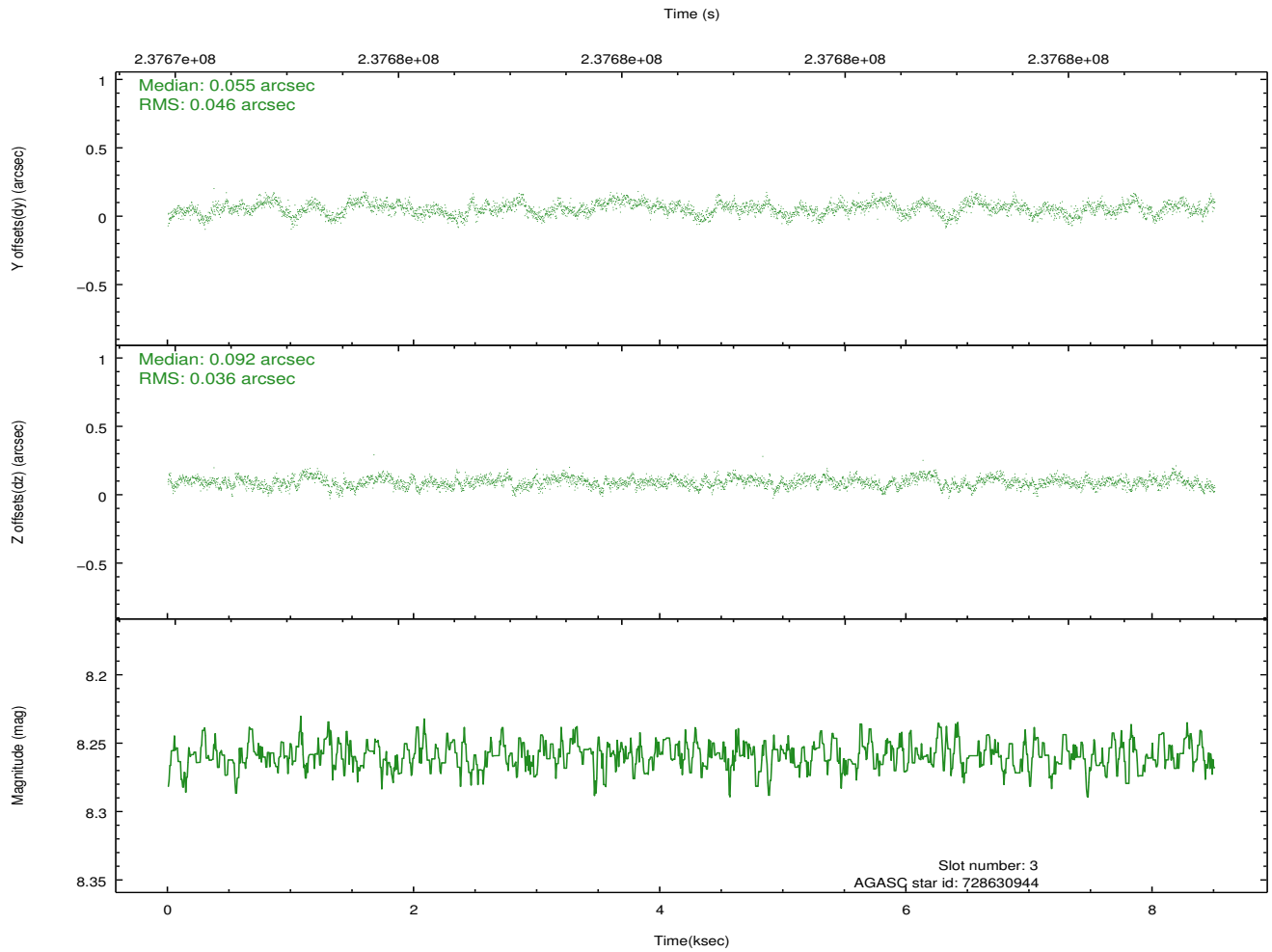
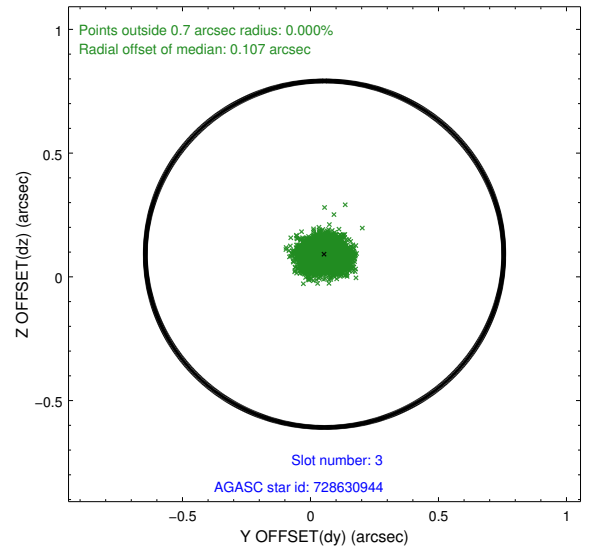
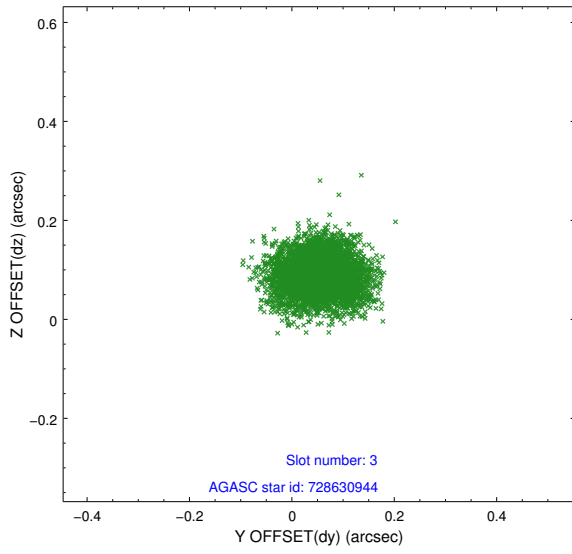


### Slot Statistics

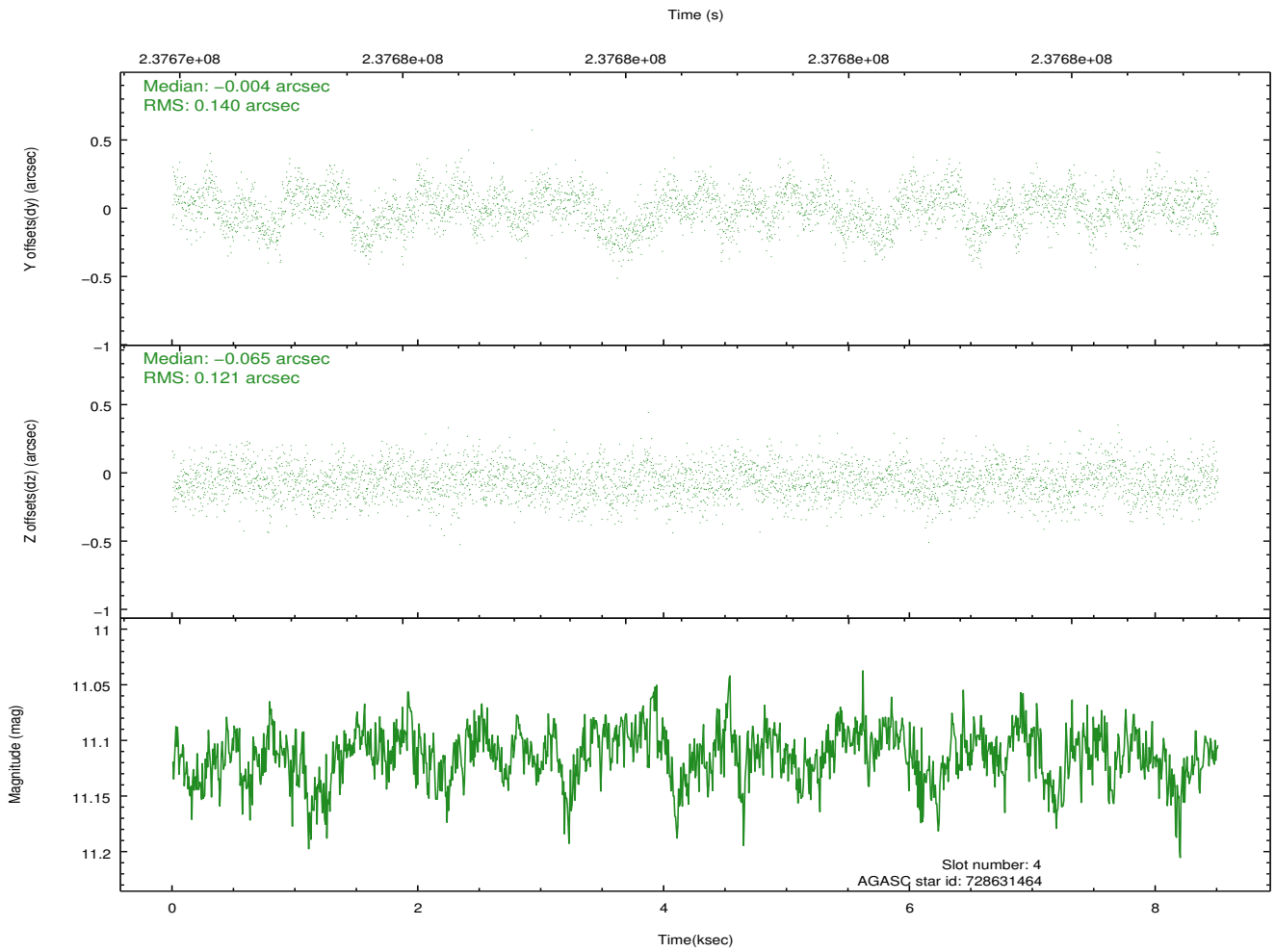
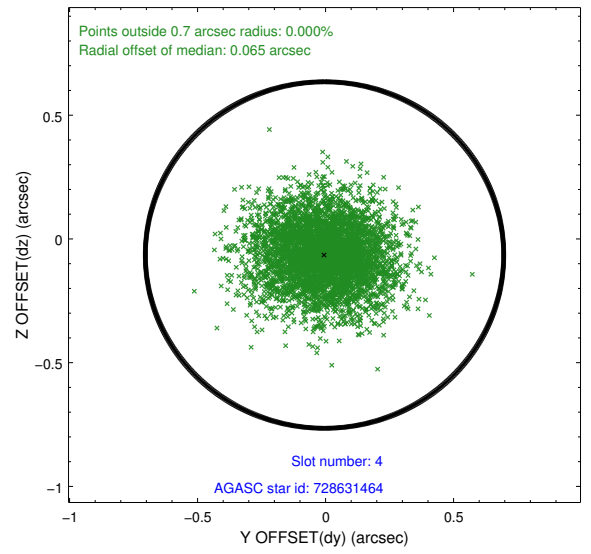
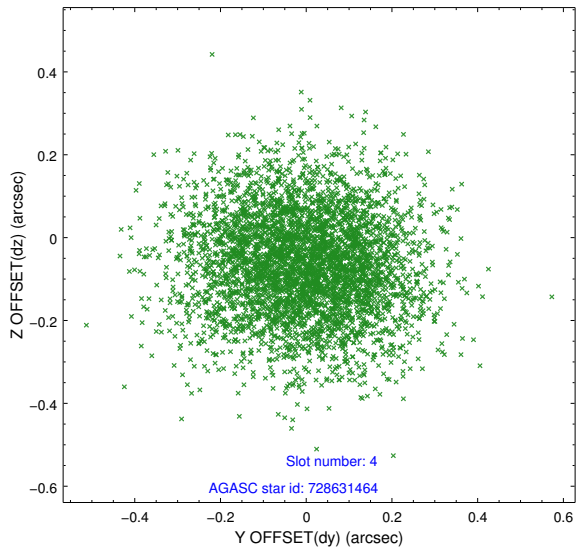
slot	status	id	mag	n_pts	med_dy	med_dz	dr1	dr2	ra	dec	mean_y	mean_z
0	FID	ACIS-S-2	7.10	2075	-0.067	-0.027	0.006	0.011	0.000000	0.000000	-759.08	-1731.24
1	FID	ACIS-S-4	7.21	2075	0.104	0.040	0.006	0.010	0.000000	0.000000	2154.04	176.68
2	FID	ACIS-S-5	7.23	2075	-0.067	-0.004	0.007	0.012	0.000000	0.000000	-1811.11	170.99
3	GUIDE	728630944	8.26	4150	0.055	0.092	0.062	0.100	208.923207	-13.740319	1543.34	-298.95
4	GUIDE	728631464	11.11	4139	-0.004	-0.065	0.197	0.320	208.876674	-12.686242	-1963.55	-1757.92
5	GUIDE	728638600	9.41	4142	-0.044	-0.162	0.087	0.144	209.320543	-13.467304	142.36	668.72
6	GUIDE	728639032	9.16	4149	0.176	0.206	0.076	0.124	209.196450	-13.877558	1679.50	767.99
7	GUIDE	728633480	9.93	4140	-0.183	-0.073	0.115	0.187	208.432486	-13.299426	645.90	-2458.96

## 2.4 Star Slots

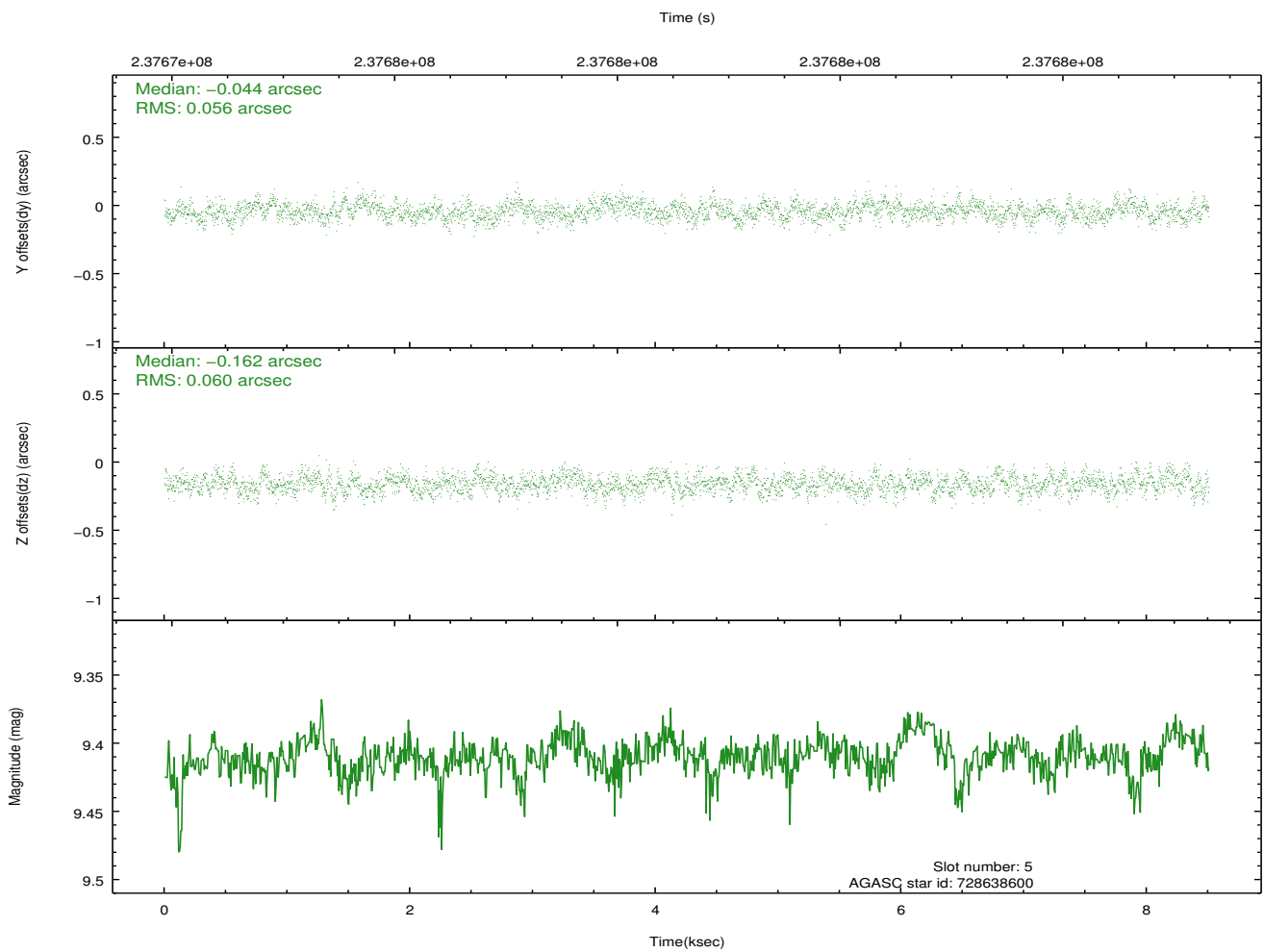
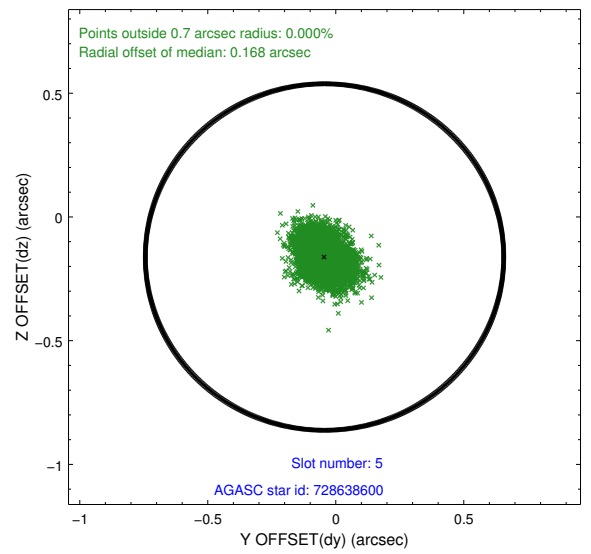
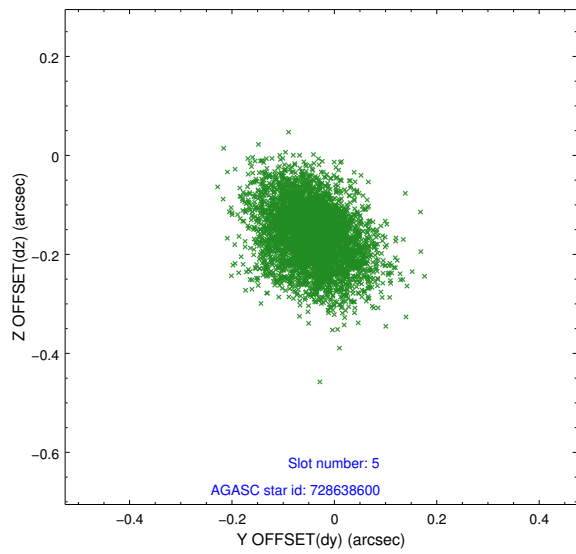
### 2.4.1 Slot 3



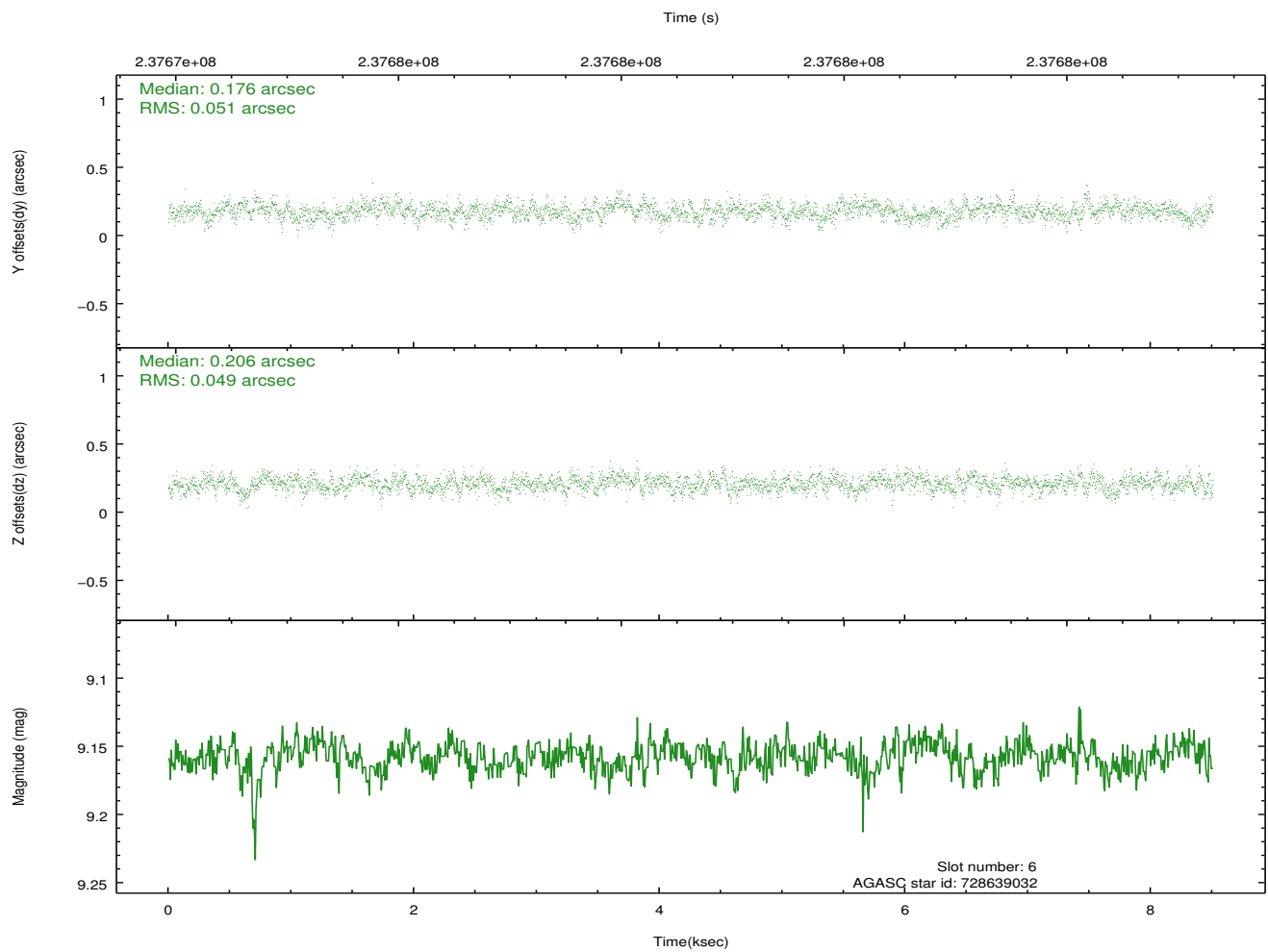
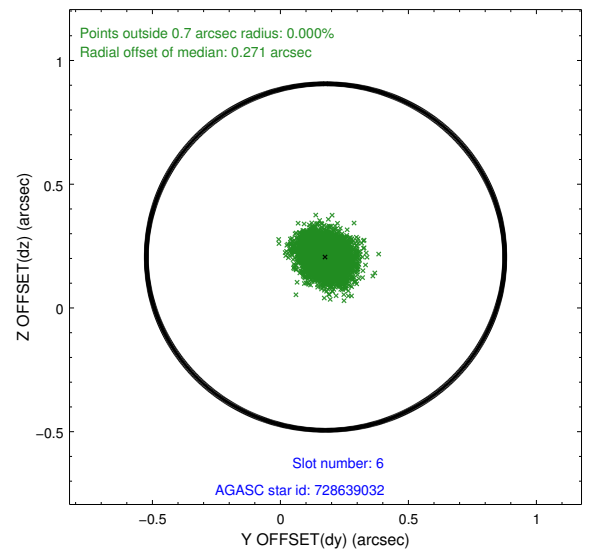
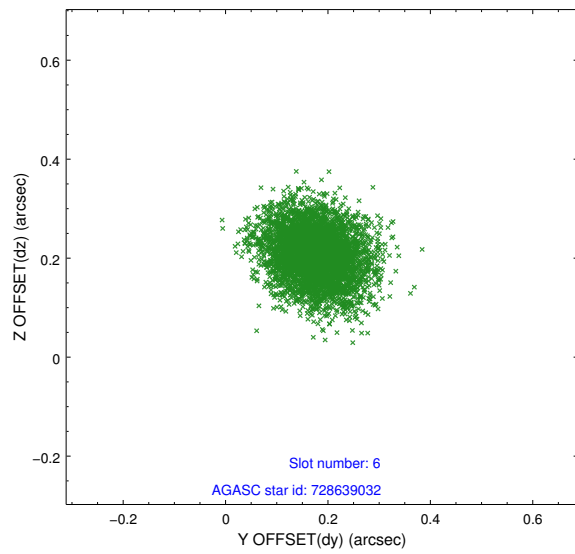
### 2.4.2 Slot 4



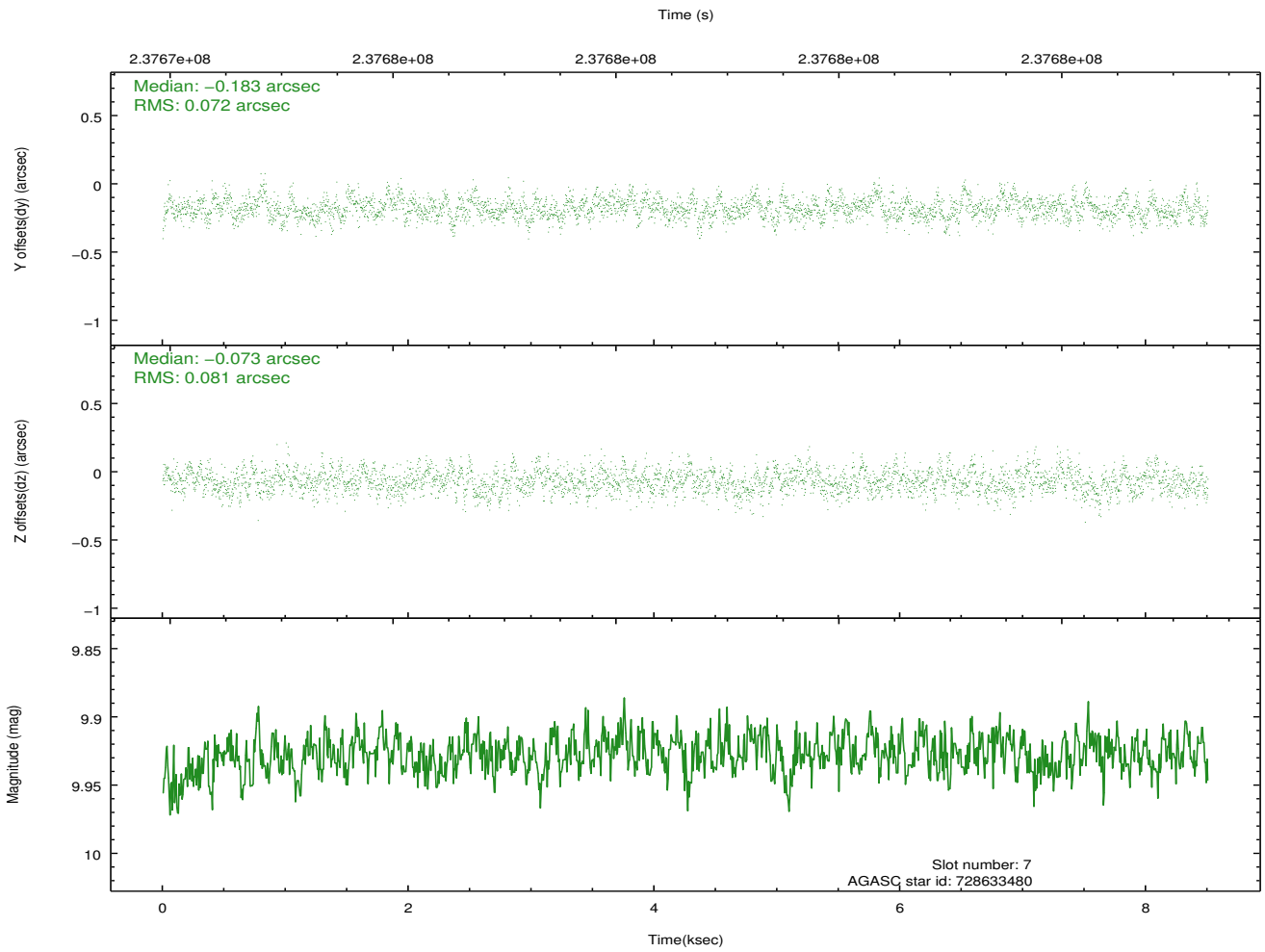
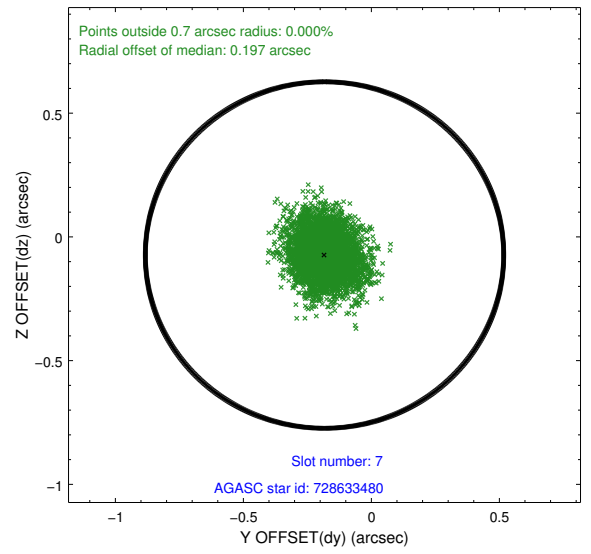
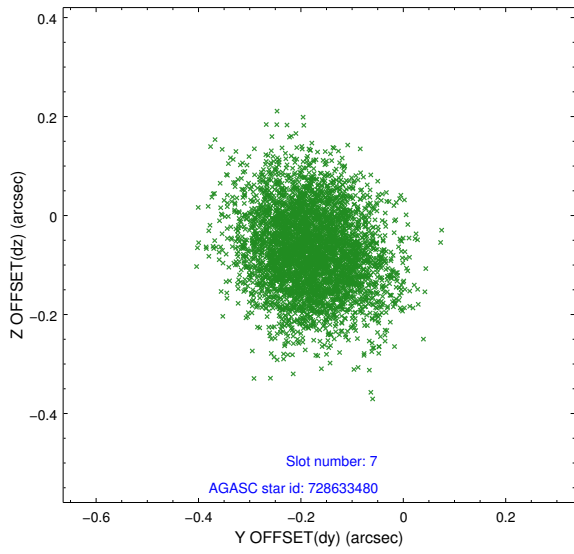
### 2.4.3 Slot 5



## 2.4.4 Slot 6

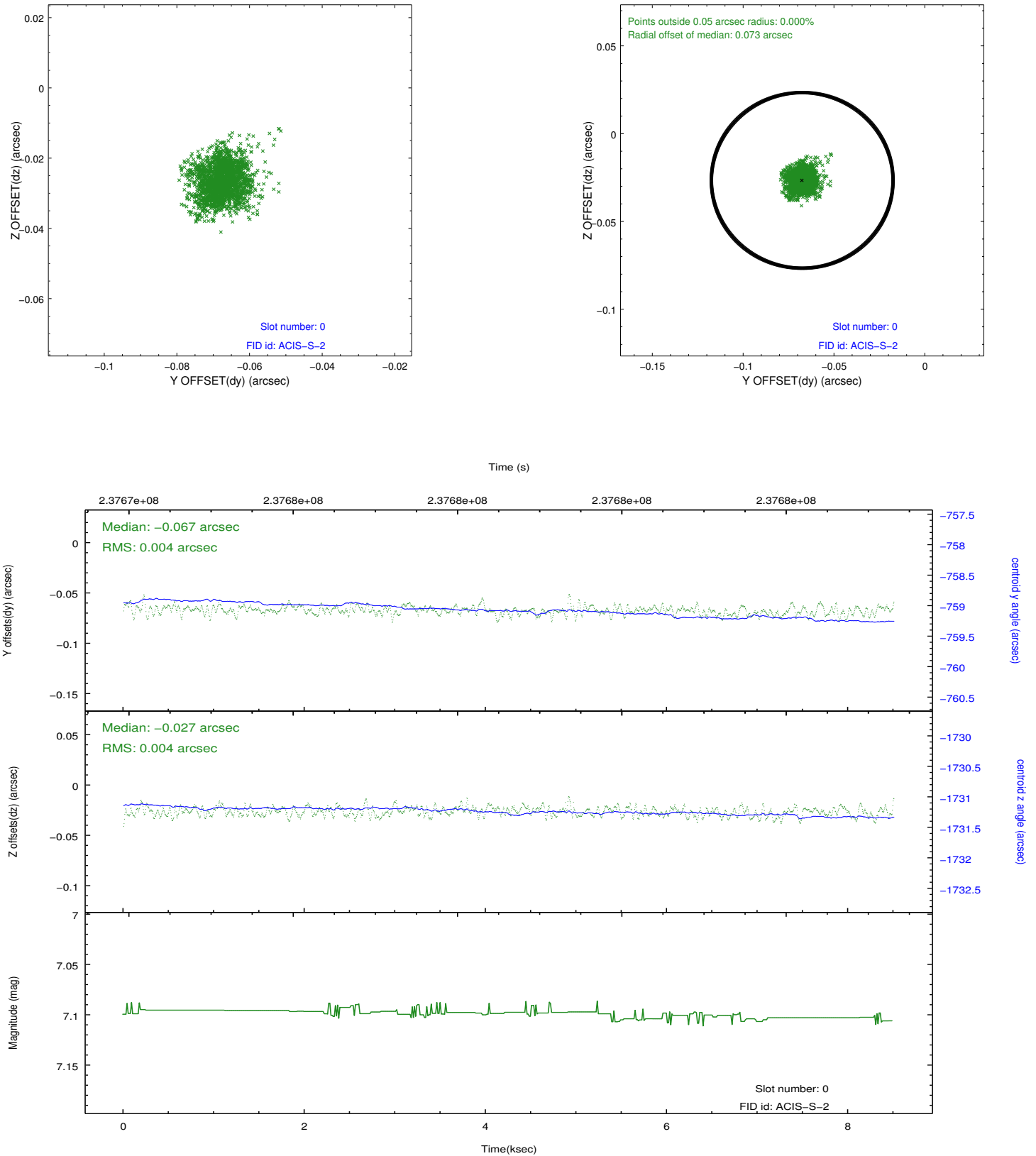


### 2.4.5 Slot 7

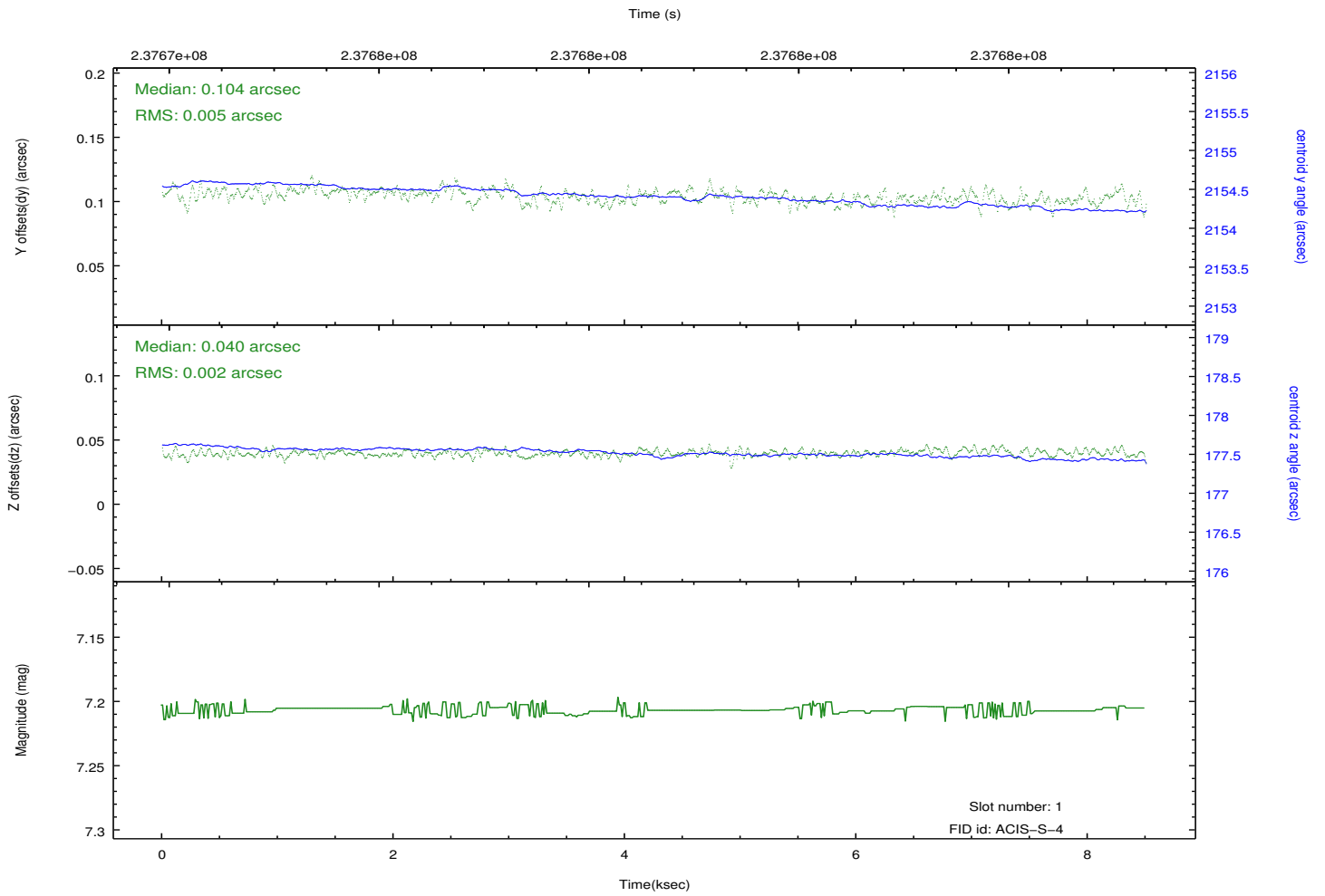
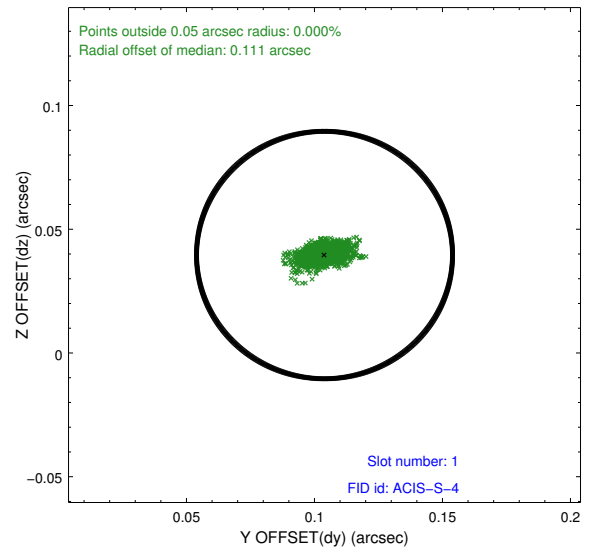
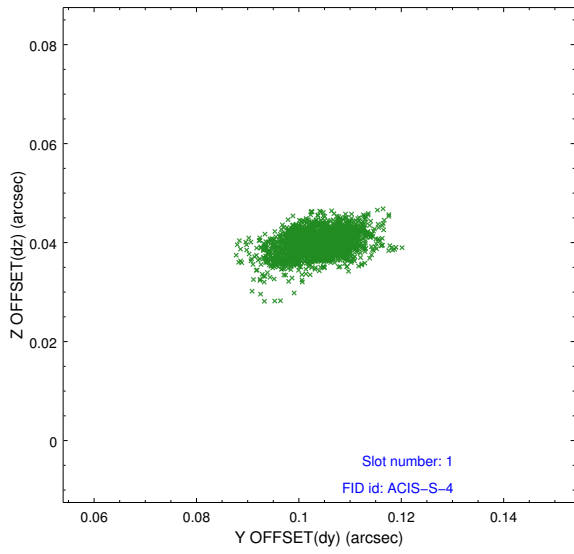


## 2.5 FID Slots

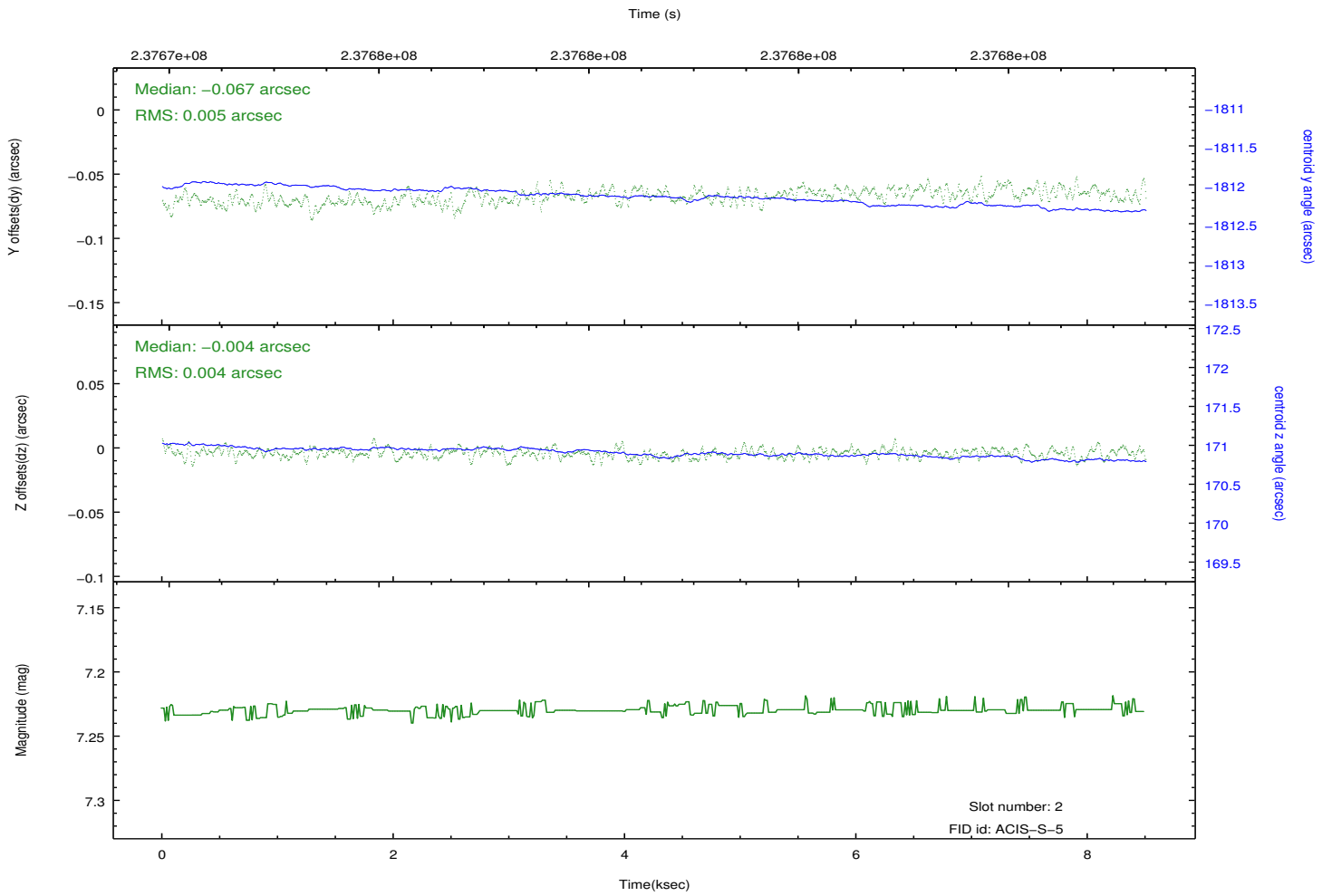
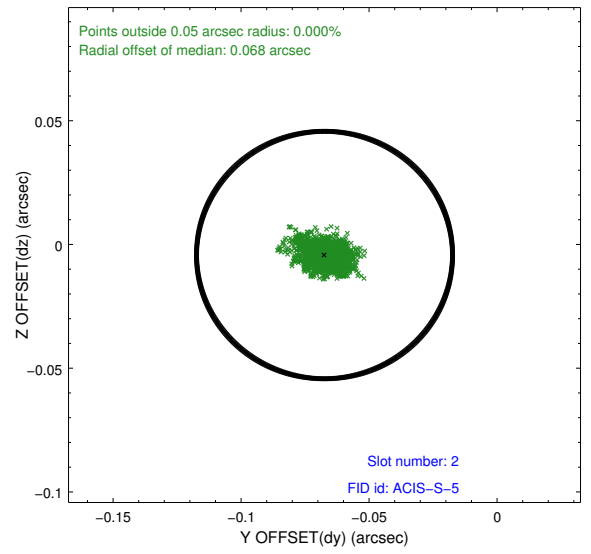
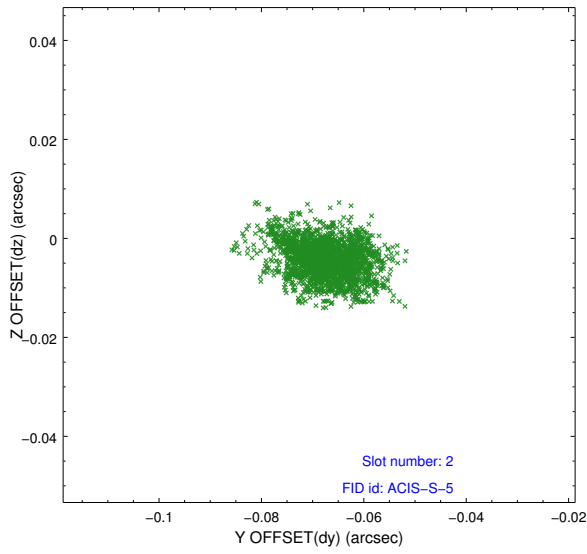
### 2.5.1 Slot 0



## 2.5.2 Slot 1



### 2.5.3 Slot 2



# A Summary

## A.1 Status

V&V Scientist	Beth Sundheim
V&V Date (YYYY-MM-DD)	2013.01.18
V&V Edition	1
V&V Disposition and Status	OK
V&V Charge Time	8.502399

## A.2 Comments

Window preference was not met.