

V&V Reference Report

L2 ASCDS Version : 8.5.1.1

Observation 6372 - L2 Version 3
Chandra X-Ray Center

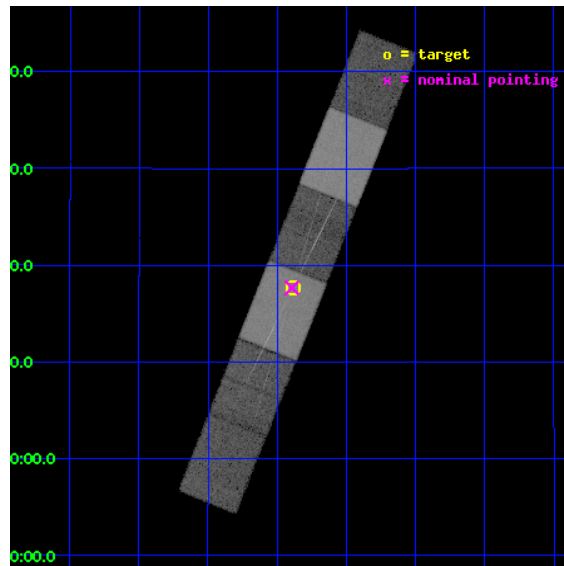
L2 Processing Date : Dec 28 2012

Contents

1	Front	2
2	OBI	3
2.1	OBI	3
2.1.1	Images	3
2.1.2	Bias	3
2.1.3	Parameters	4
2.1.4	Events	4
2.2	Compared Parameters	5
2.3	Aspect	6
2.4	Star Slots	9
2.4.1	Slot 3	9
2.4.2	Slot 4	10
2.4.3	Slot 5	11
2.4.4	Slot 6	12
2.4.5	Slot 7	13
2.5	FID Slots	14
2.5.1	Slot 0	14
2.5.2	Slot 1	15
2.5.3	Slot 2	16
3	Gratings	17
3.1	HEG Arm	17
3.2	MEG Arm	19
A	Summary	21
A.1	Status	21
A.2	Comments	21

1 Front

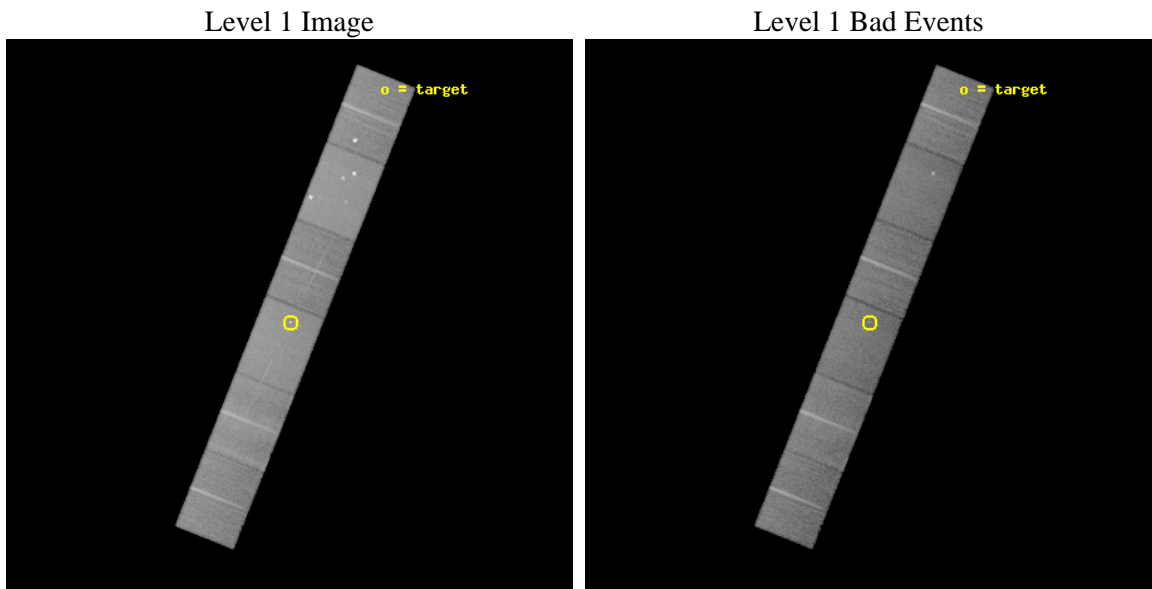
seq_num	300148	Sequence number
obs_id	6372	Observation id
title	Chandra HETG Spectroscopy of the VY Sculptoris Star TT Ari	Proposa
observer	Christopher Mauche	Principal investigator
object	TT Ari	Source name
dtycycle	0	
cycle	P	events from which exps? Prim/Second/Both
ra_targ	31.72125	Observer's specified target RA [deg]
dec_targ	15.295278	Observer's specified target Dec [deg]
ra_nom	31.723410356781	Nominal RA [deg]
dec_nom	15.294524764785	Nominal Dec [deg]
roll_nom	111.73220384873	Nominal Roll [deg]
revision	3	Processing version of data
ontime	33167.5	Sum of GTIs [s]
livetime	32631.816106791	Livetime [s]
ontime4	33167.5	Sum of GTIs [s]
ontime5	33167.5	Sum of GTIs [s]
ontime6	33167.5	Sum of GTIs [s]
ontime7	33167.5	Sum of GTIs [s]
ontime8	33167.5	Sum of GTIs [s]
ontime9	33167.5	Sum of GTIs [s]
l2events	326313	Number of level 2 events



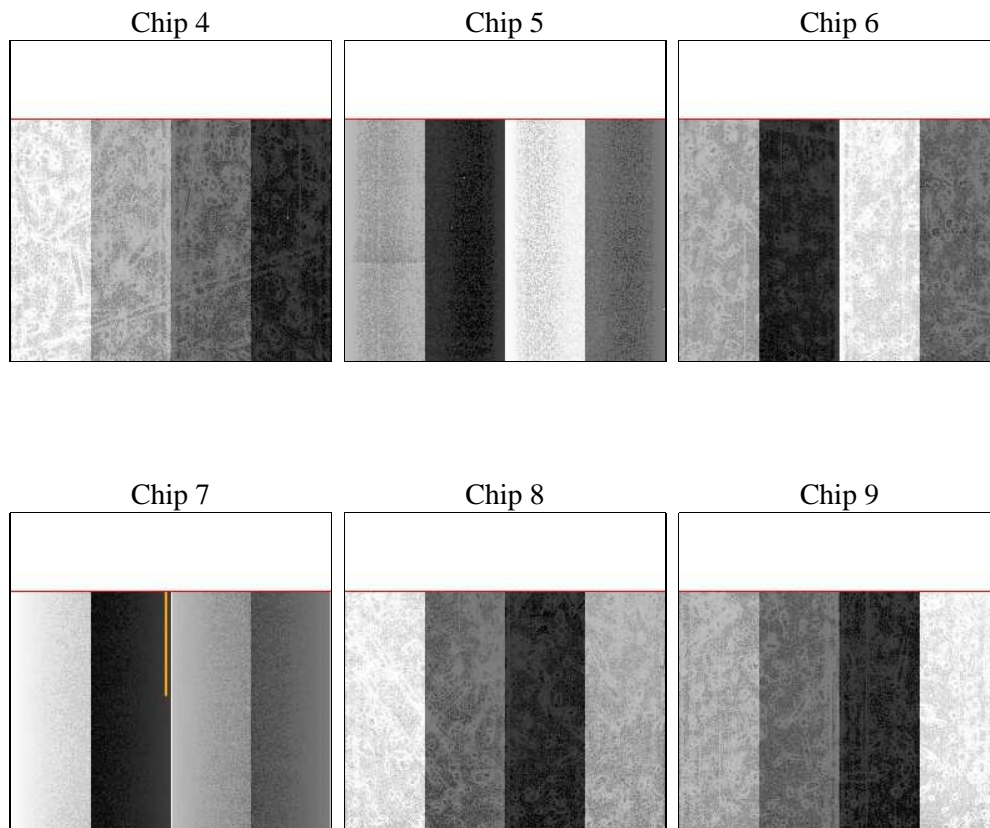
2 OBI

2.1 OBI

2.1.1 Images



2.1.2 Bias



2.1.3 Parameters

obi_num	0	Obi number	sched_exp_time	32988.526000	[s] Scheduled observation exposure time
ascdsver	8.5.1.1	Processing system revision	ontime	33167.5	Sum of GTIs [s]
caldbver	4.5.5	 	ontime4	33167.5	Sum of GTIs [s]
date	2012-12-28T22:29:02	Date and time of file creation	ontime5	33167.5	Sum of GTIs [s]
revision	3	Processing version of data	ontime6	33167.5	Sum of GTIs [s]
			ontime7	33167.5	Sum of GTIs [s]
			ontime8	33167.5	Sum of GTIs [s]
			ontime9	33167.5	Sum of GTIs [s]
			l1events	1420570	Number of level 1 events

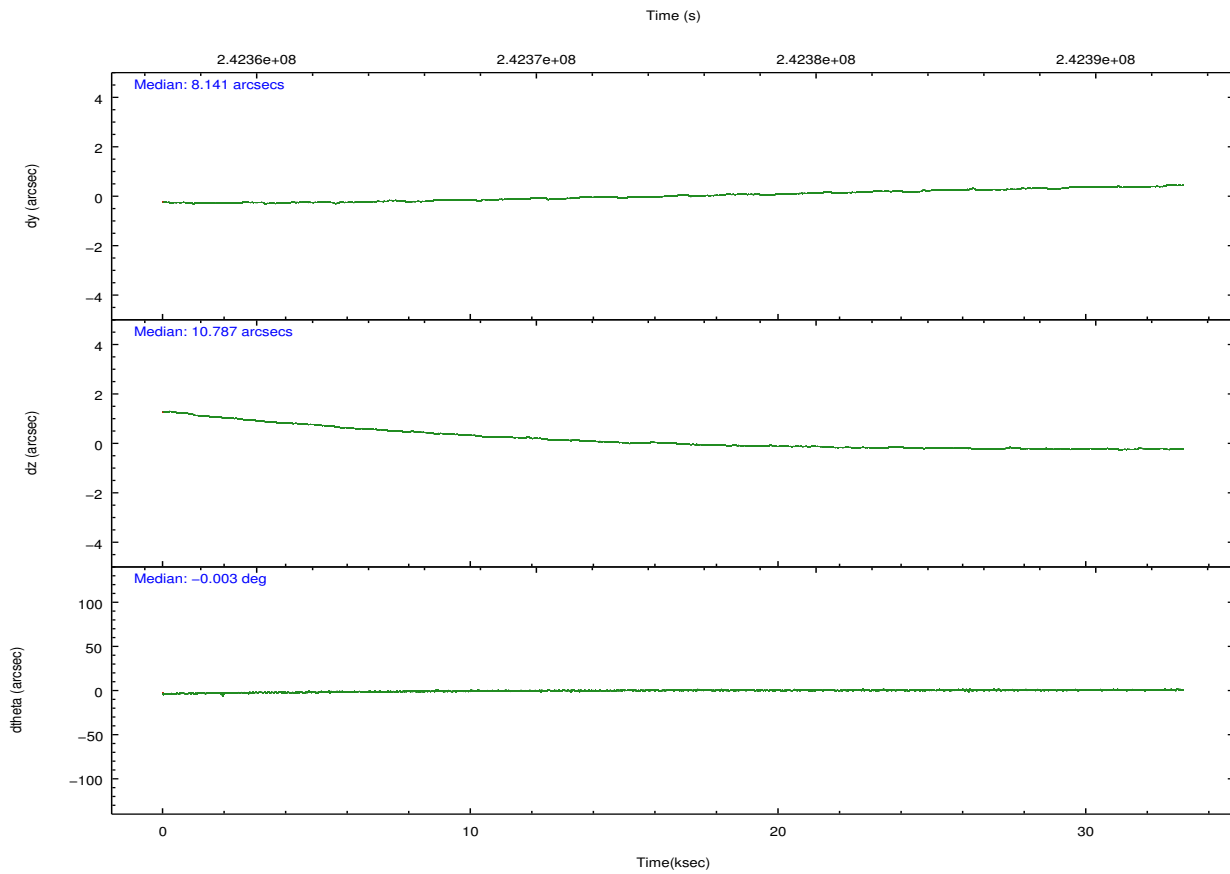
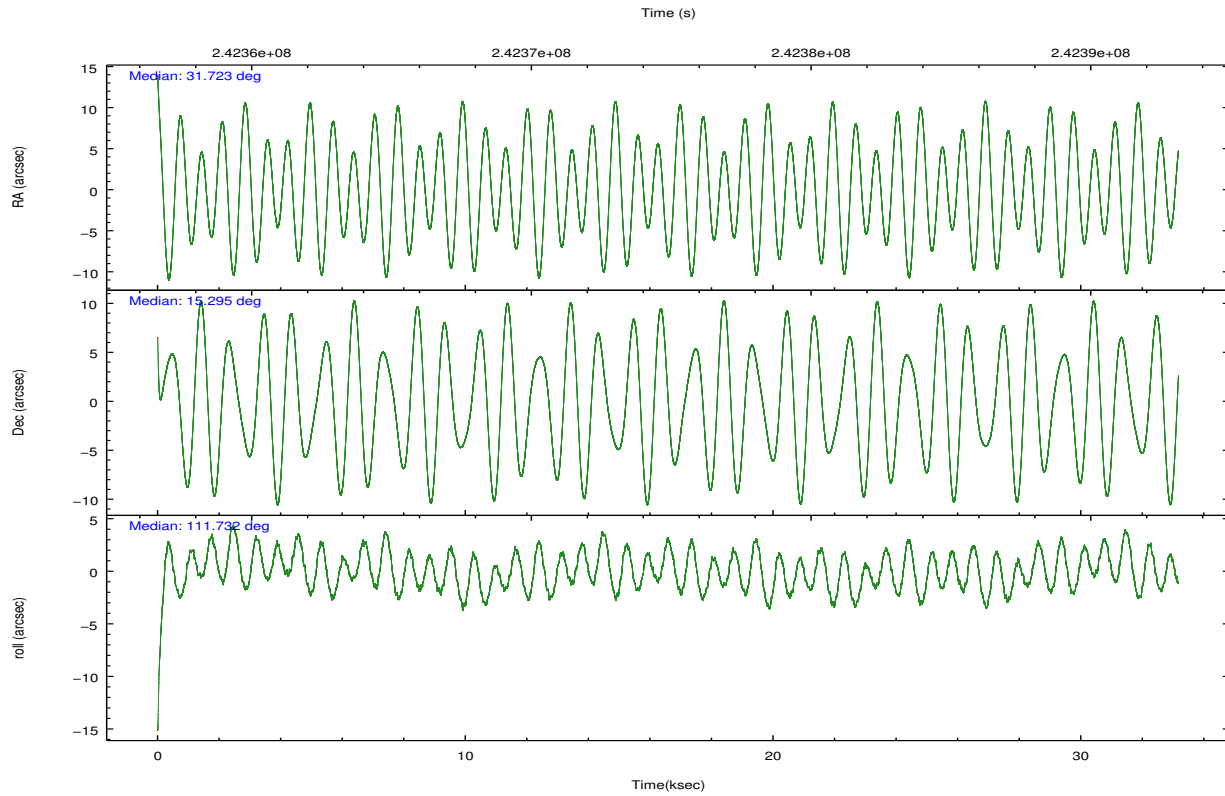
2.1.4 Events

	ccd 4	ccd 5	ccd 6	ccd 7	ccd 8	ccd 9		ccd 4	ccd 5	ccd 6	ccd 7	ccd 8	ccd 9
level 1 events	223981	303555	192734	265527	248484	186289	grade 0 events	22535	21324	11730	11066	18108	10600
rejected events	187372	158396	166188	152025	192913	161351		10%	7%	6%	4%	7%	5%
rejected %	83%	52%	86%	57%	77%	86%	grade 1 events	215	423	85	287	150	106
								0%	0%	0%	0%	0%	0%
							grade 2 events	5445	45482	5215	23320	12208	4929
								2%	14%	2%	8%	4%	2%
							grade 3 events	2633	6071	2595	10660	5936	2604
								1%	1%	1%	4%	2%	1%
							grade 4 events	2562	6004	2468	10639	5358	2423
								1%	1%	1%	4%	2%	1%
							grade 5 events	8546	22558	8580	24637	11416	9295
								3%	7%	4%	9%	4%	4%
							grade 6 events	4116	69264	4963	59932	14943	4884
								1%	22%	2%	22%	6%	2%
							grade 7 events	177929	132429	157098	124986	180365	151448
								79%	43%	81%	47%	72%	81%

2.2 Compared Parameters

Parameter	Planned	Actual	Parameter	Planned	Actual
Instrument	ACIS	ACIS	Obspar format version number	7	7
Detector	ACIS-456789	ACIS-456789	Obspar file type	PREDICTED	ACTUAL
Grating	HETG	HETG	Obspar update status	NONE	UPDATED
Data mode	FAINT	FAINT	Number of optional ACIS chips dropped	0	0
Observation mode	POINTING	POINTING	On-chip summing requested	N	N
[deg] Pointing RA	31.745817	31.72341035678132	Subarray requested	CUSTOM	CUSTOM
[deg] Pointing Dec	15.277945	15.29452476478481	Subarray start row	1	1
[deg] Pointing Roll	111.569666	111.7322038487317	Subarray row count	774	774
[mm] SIM focus pos	-0.684267	-0.6828225247311905	Alternating exposures requested	N	N
[mm] SIM defocus	0	0.001444936568705701	[s] Primary exposure time	0.000000	2.5
[mm] SIM translation stage pos	-187.132523	-187.1254020033014			
[mm] SIM translation stage offset	-3	-3.007120579706367			
[s] Observation start time (MET)	242358492.184000	242357187.71244			
Observation start date	2005-09-06T01:47:08	2005-09-06T01:26:27			
[s] Observation end time (MET)	242391481.184000	242391697.41403			
Observation end date	2005-09-06T10:56:57	2005-09-06T11:01:37			
Read mode	TIMED	TIMED			

2.3 Aspect

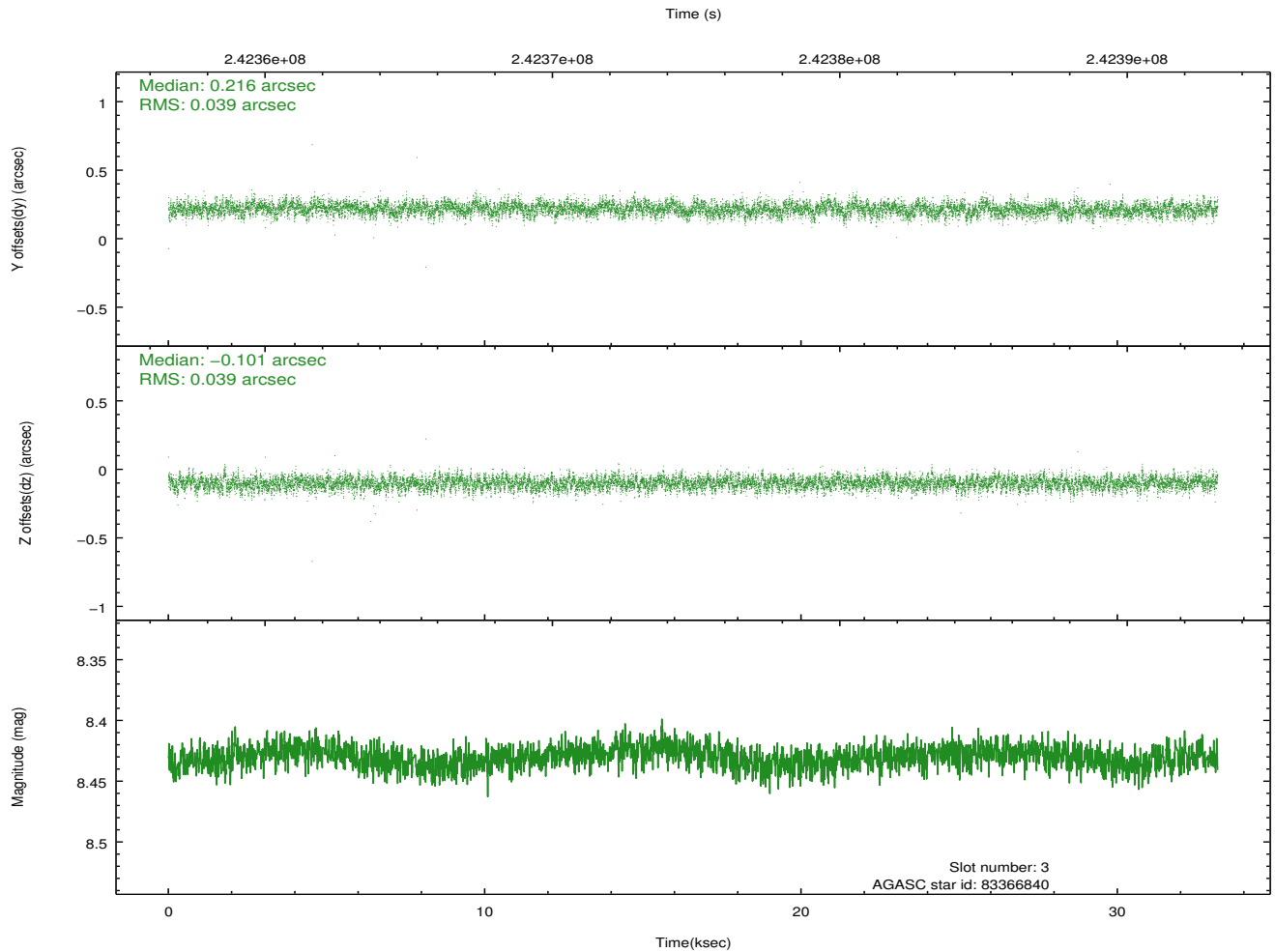
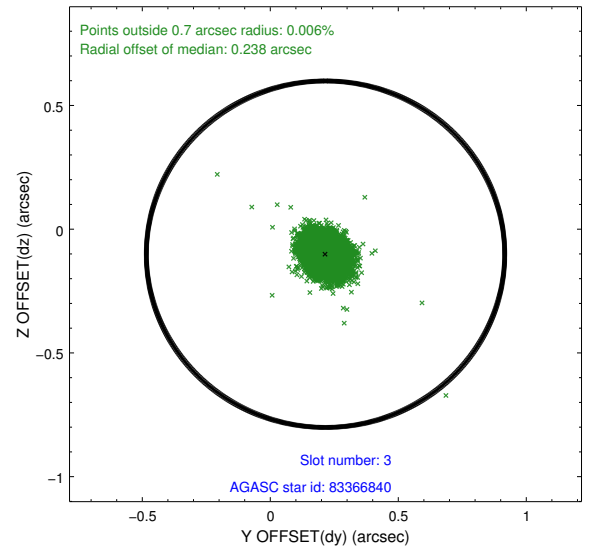
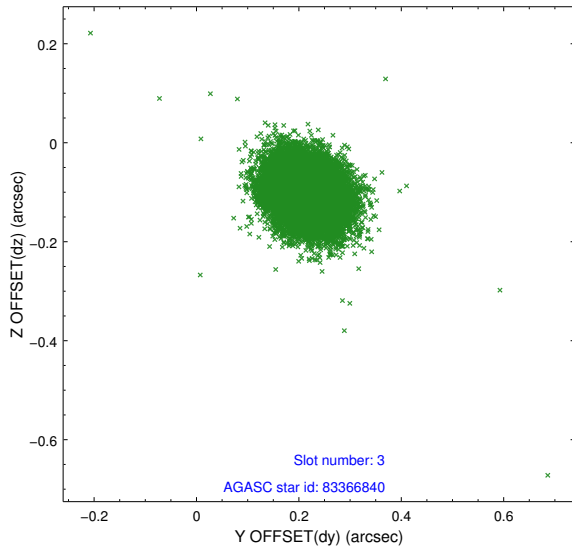


Slot Statistics

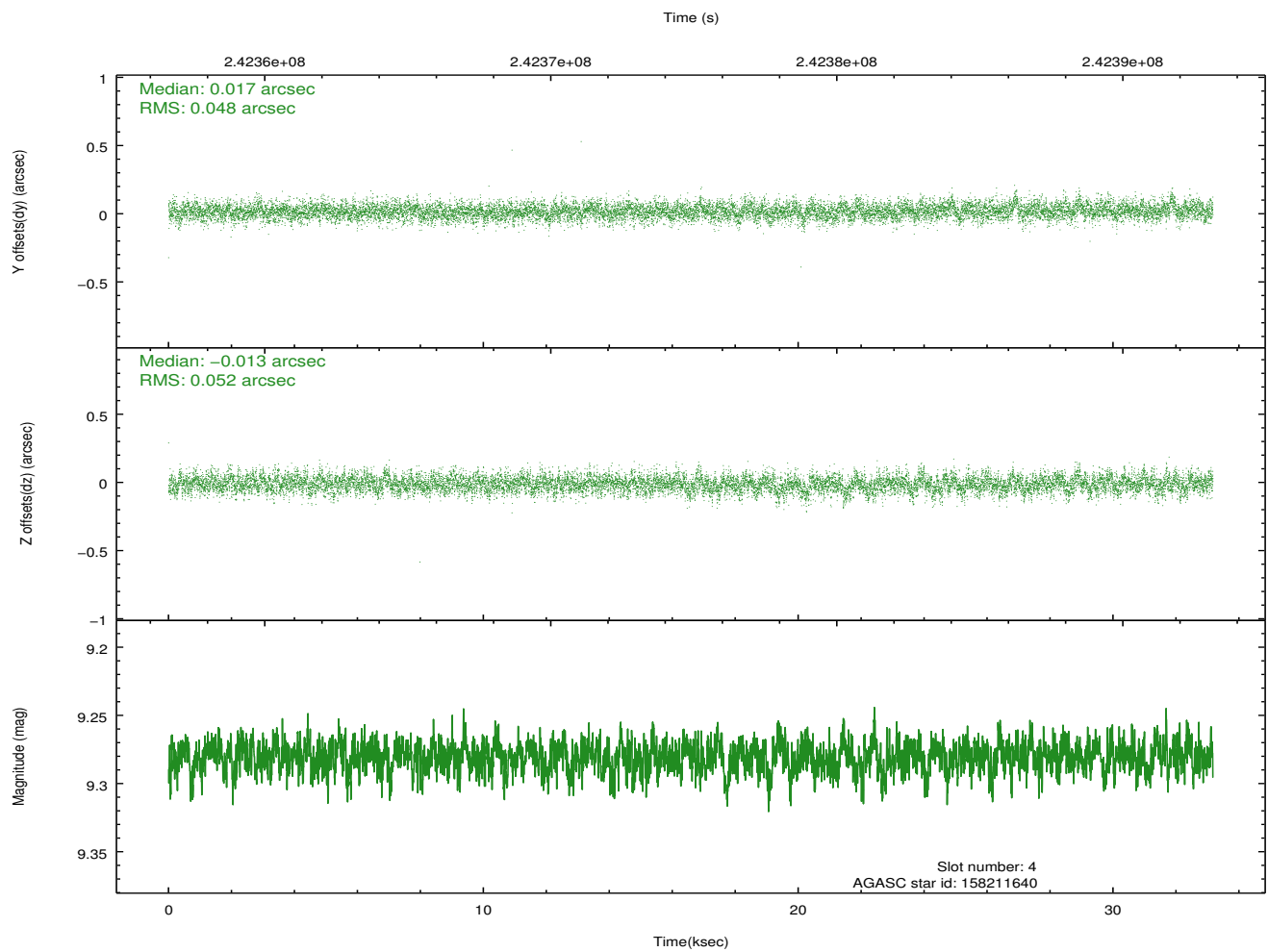
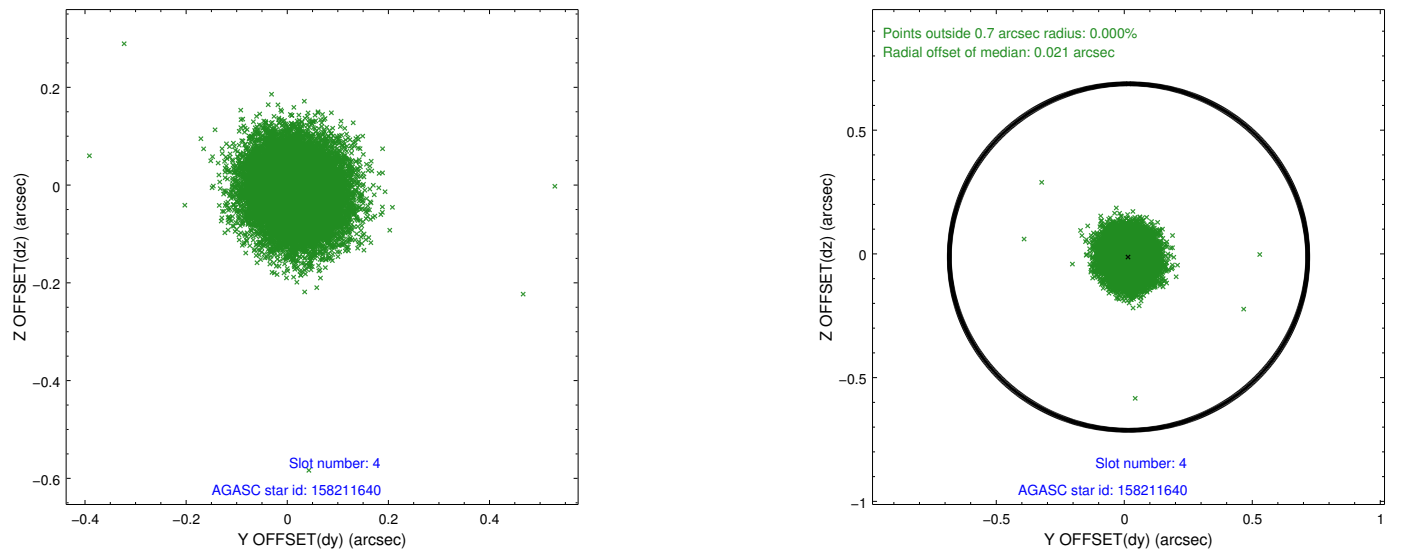
slot	status	id	mag	n_pts	med_dy	med_dz	dr1	dr2	ra	dec	mean_y	mean_z
0	FID	ACIS-S-2	7.10	8091	-0.044	-0.097	0.009	0.022	0.000000	0.000000	-760.80	-1794.40
1	FID	ACIS-S-4	7.19	8091	0.118	0.048	0.013	0.023	0.000000	0.000000	2152.64	114.14
2	FID	ACIS-S-5	7.24	8091	-0.106	0.059	0.019	0.030	0.000000	0.000000	-1813.62	107.90
3	GUIDE	83366840	8.43	16174	0.216	-0.101	0.058	0.095	31.673303	14.583774	-2230.86	1153.75
4	GUIDE	158211640	9.28	16168	0.017	-0.013	0.075	0.123	31.349537	15.537415	1375.04	934.44
5	GUIDE	159131712	7.91	16178	0.113	0.292	0.058	0.098	32.565244	15.023039	-1895.64	-2313.93
6	GUIDE	158210600	8.26	16182	-0.257	-0.046	0.067	0.105	31.131603	15.630068	1964.24	1513.14
7	GUIDE	158215416	9.23	16169	-0.088	-0.132	0.094	0.153	31.249092	15.295299	694.15	1580.47

2.4 Star Slots

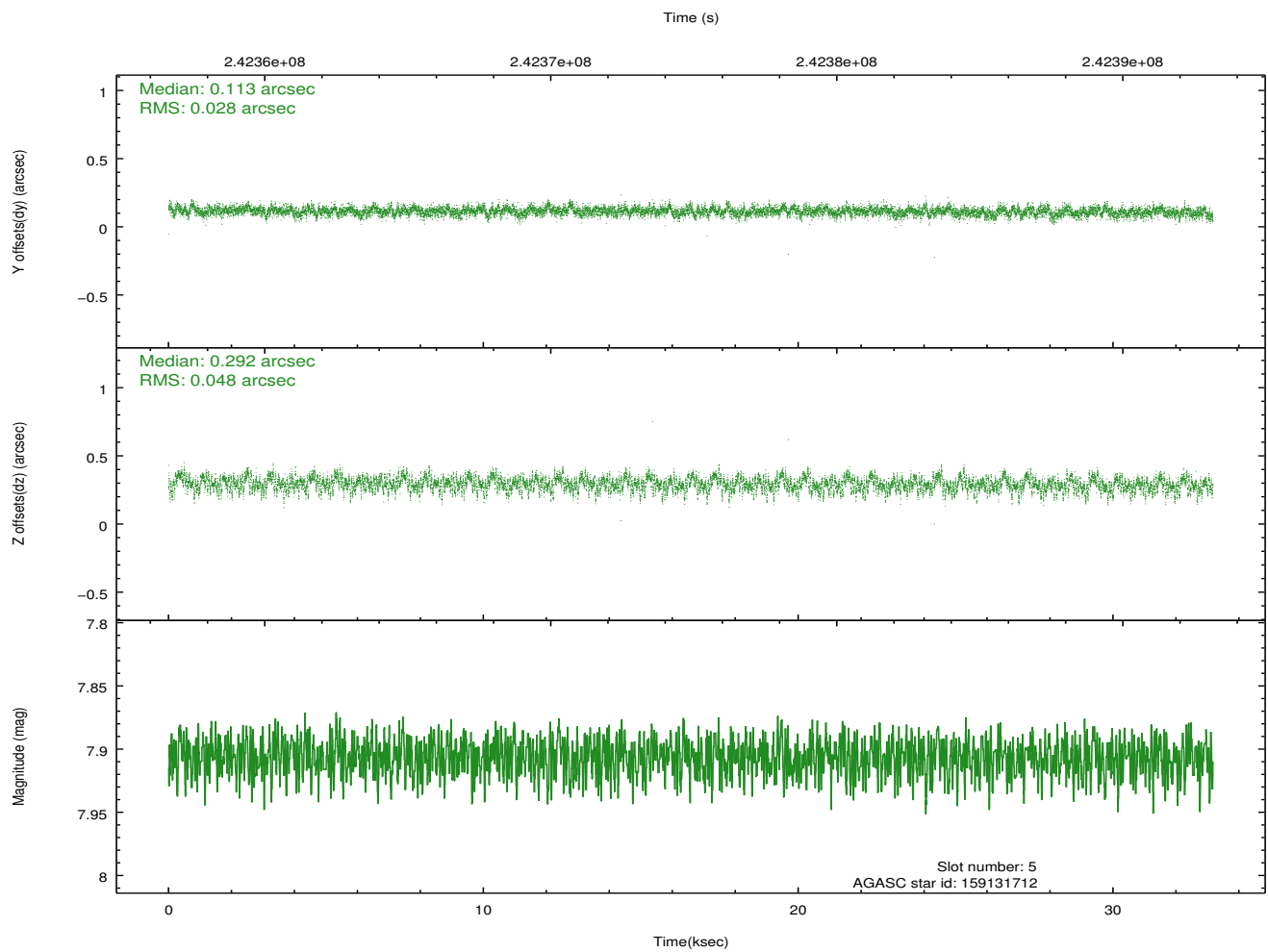
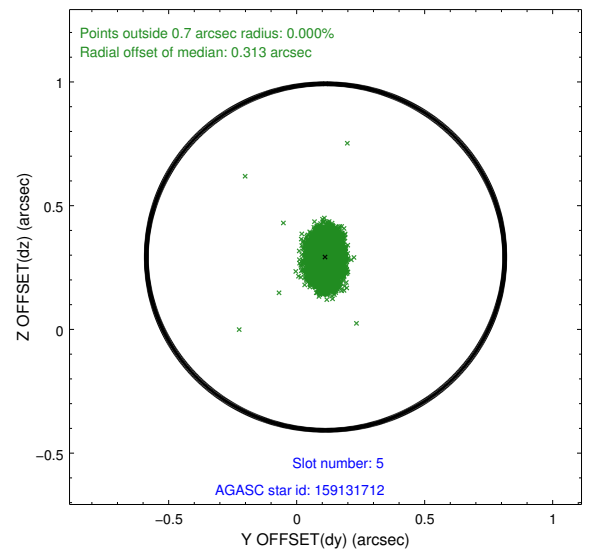
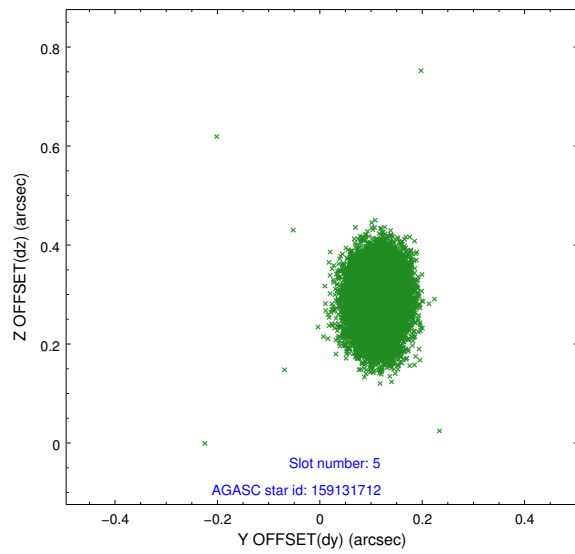
2.4.1 Slot 3



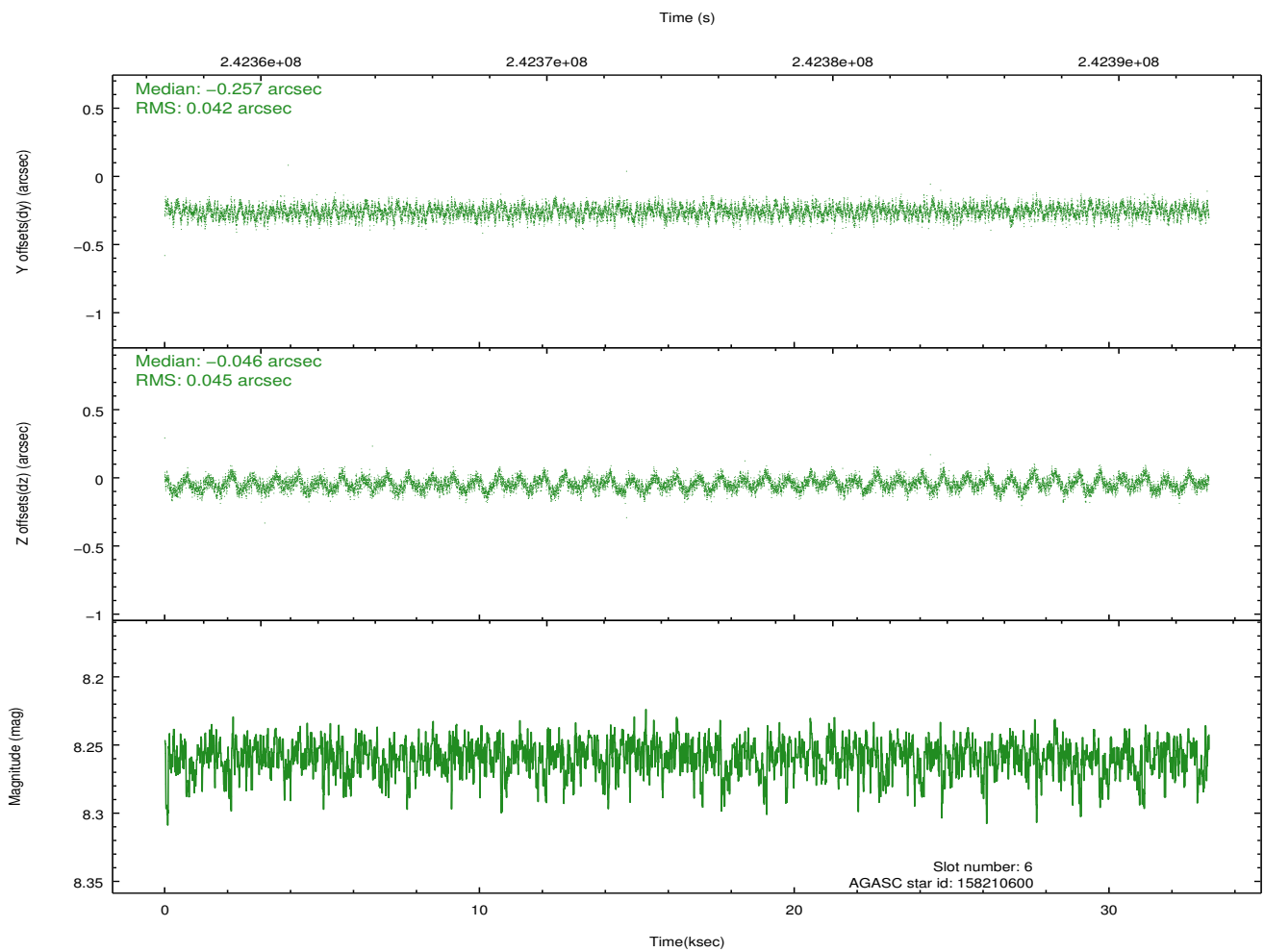
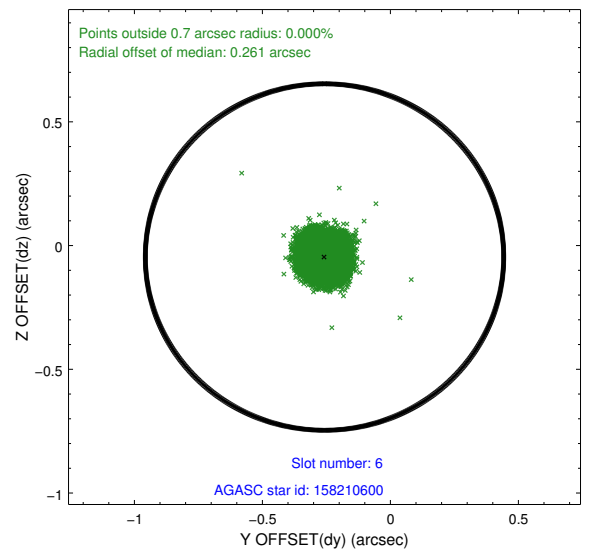
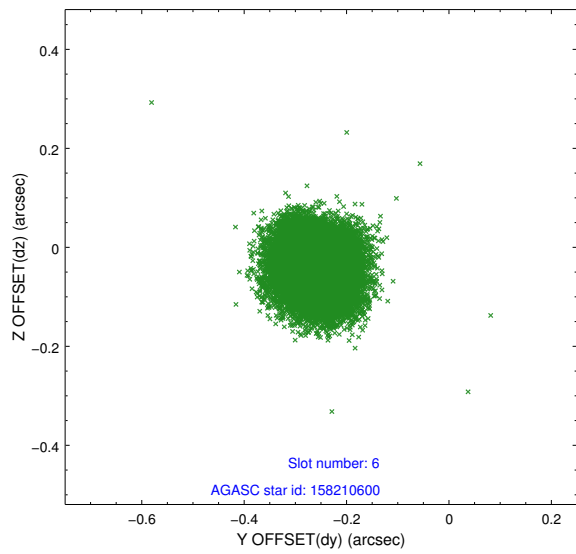
2.4.2 Slot 4



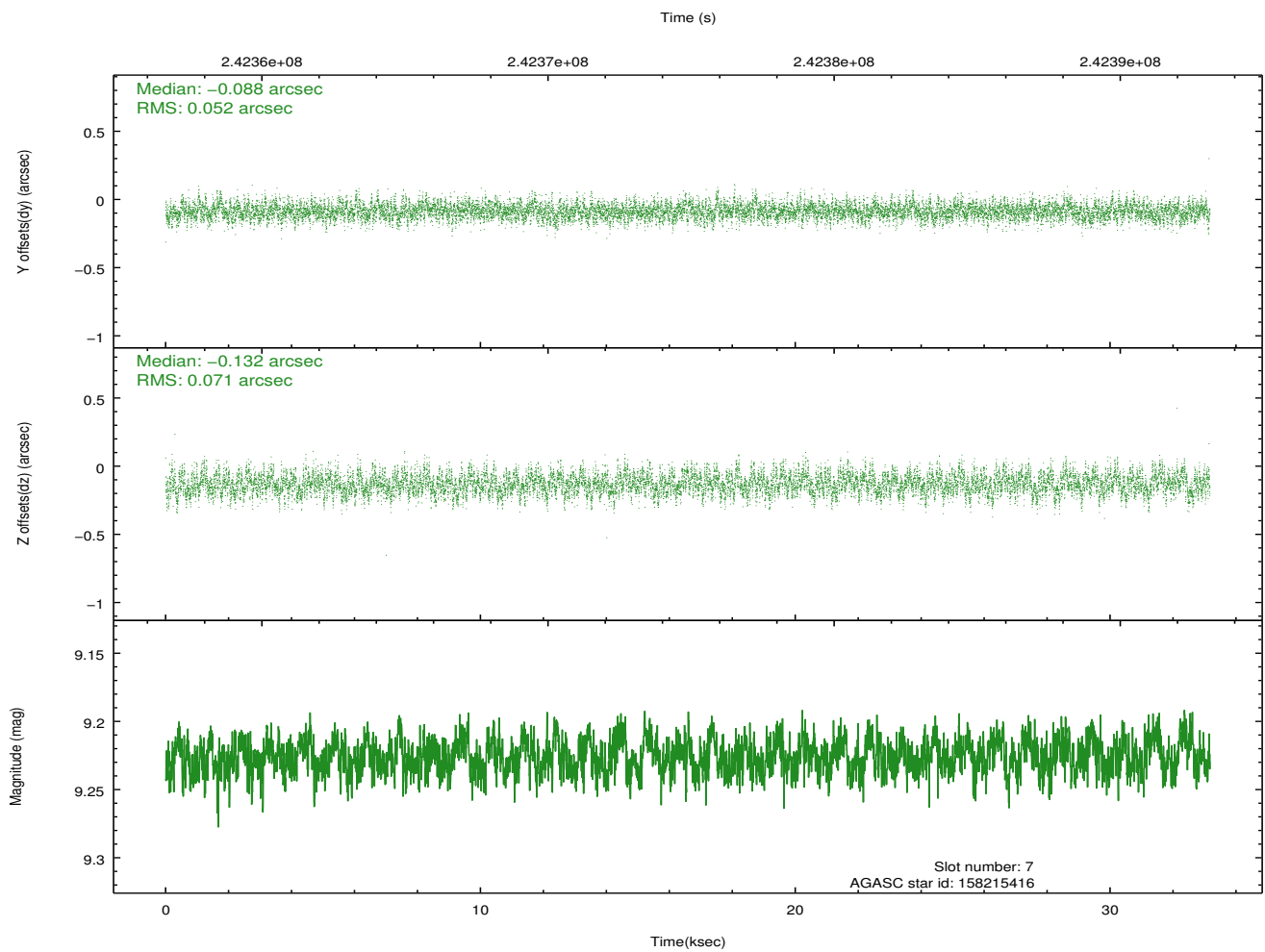
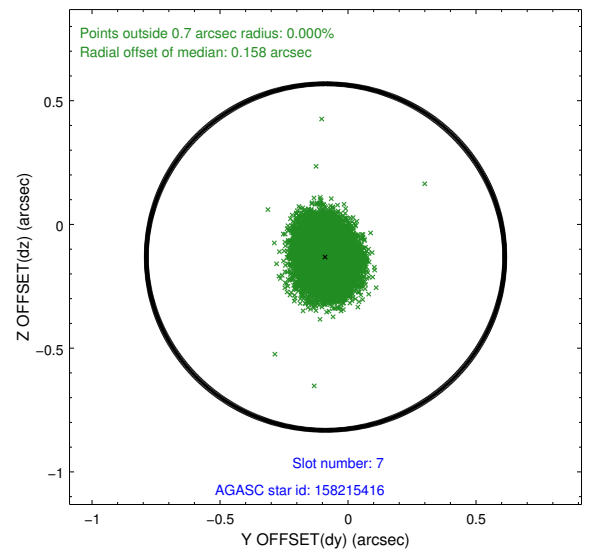
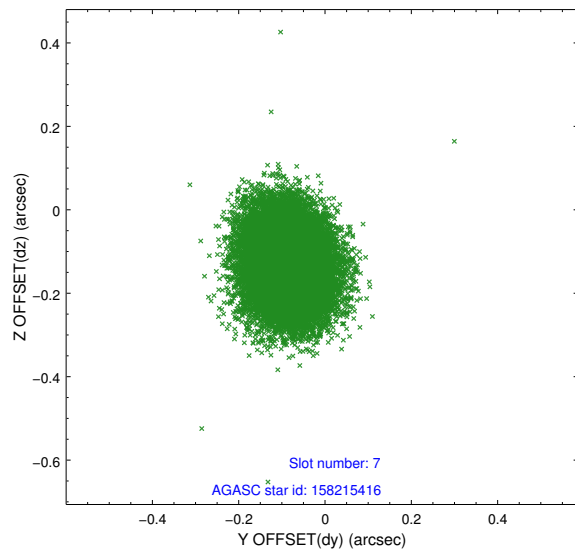
2.4.3 Slot 5



2.4.4 Slot 6

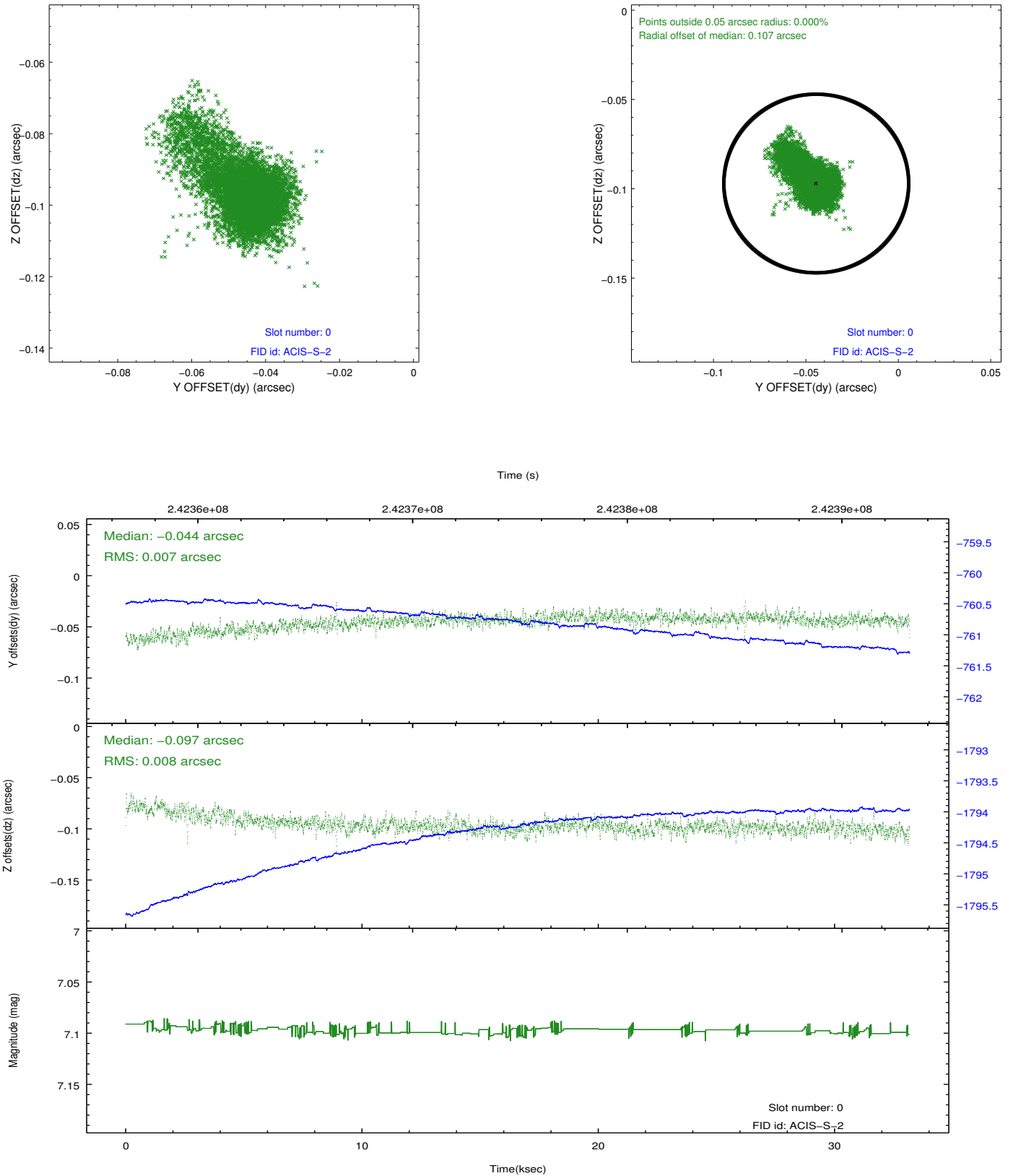


2.4.5 Slot 7

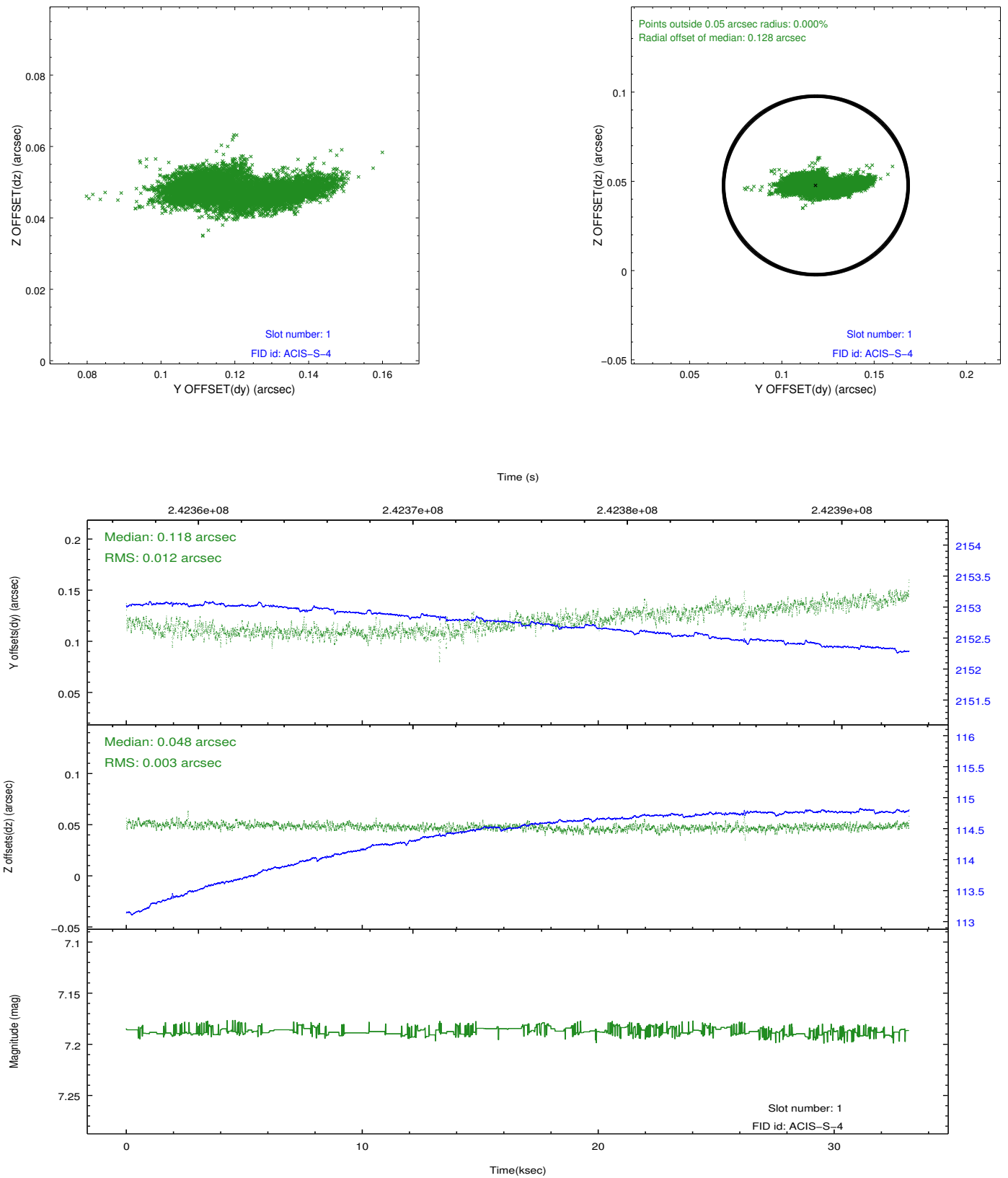


2.5 FID Slots

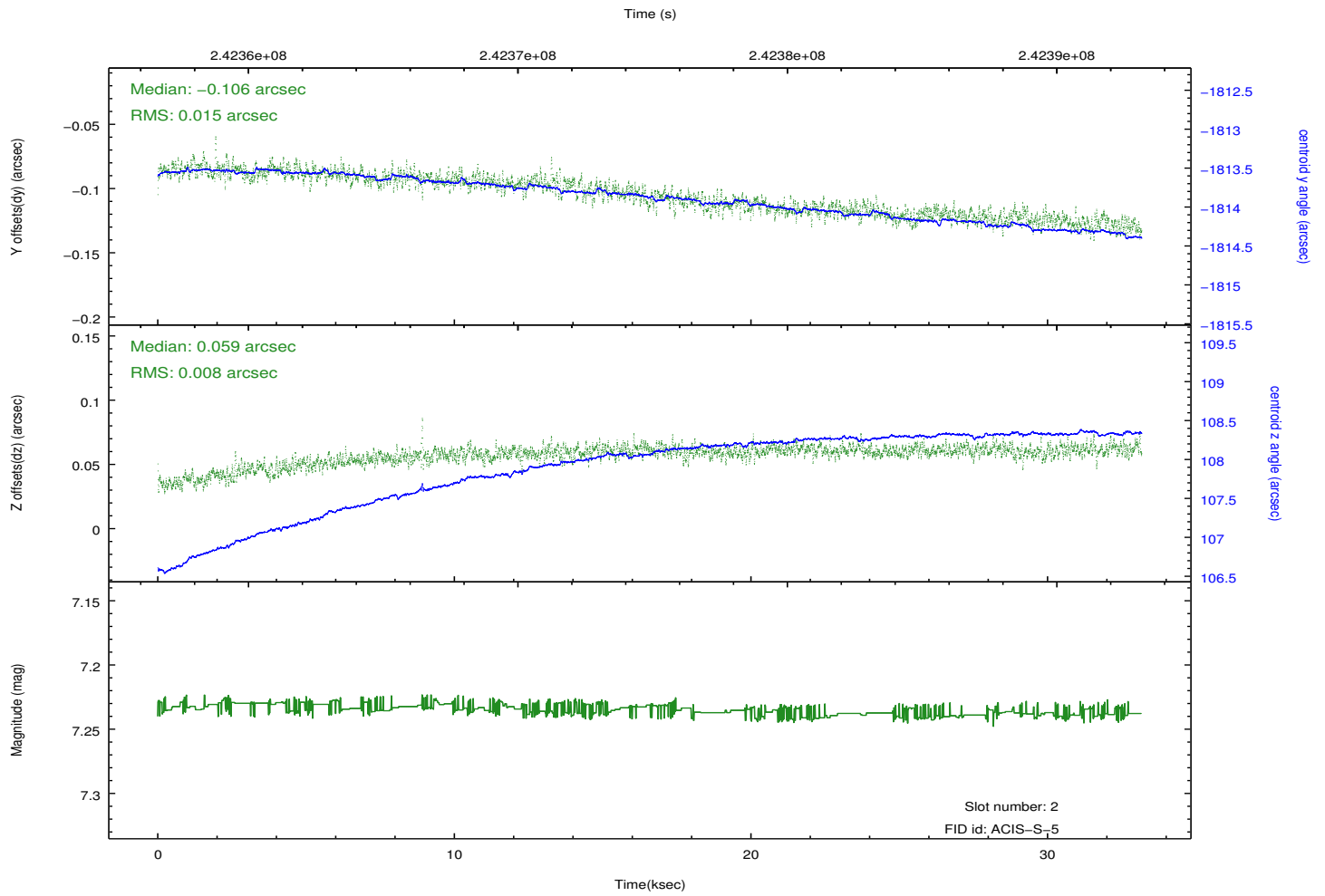
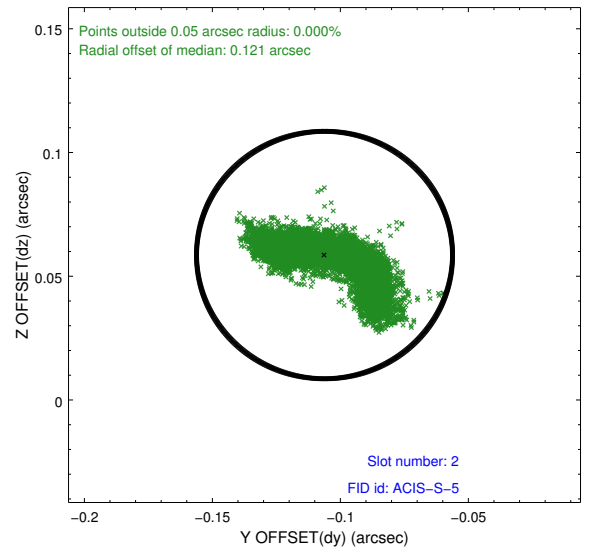
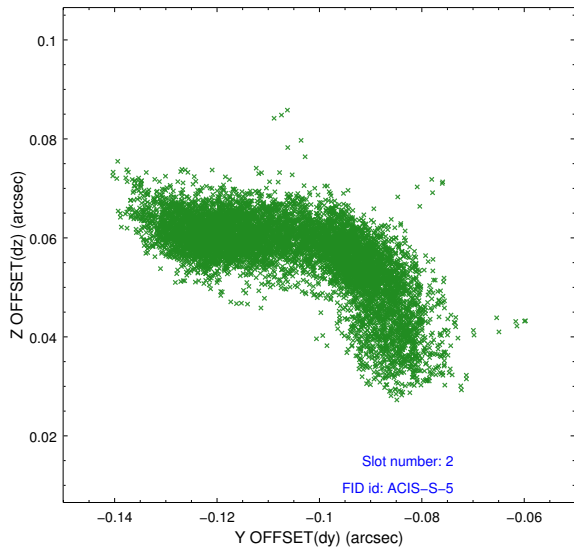
2.5.1 Slot 0



2.5.2 Slot 1

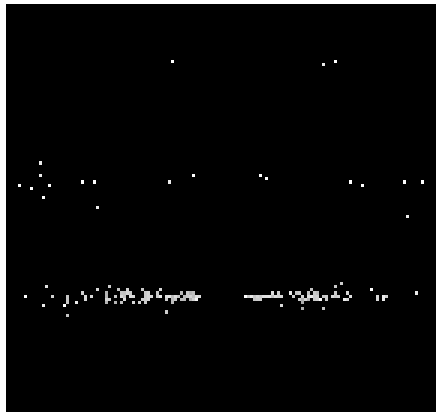


2.5.3 Slot 2

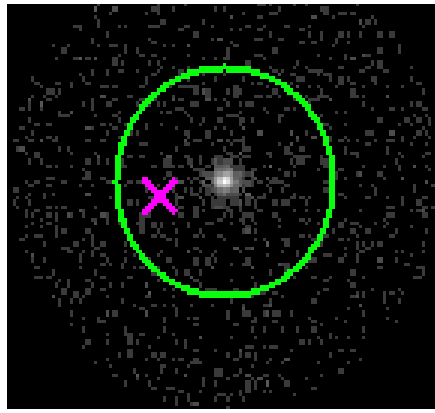


3 Gratings

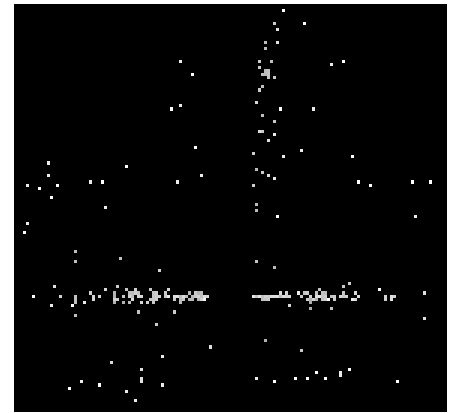
3.1 HEG Arm



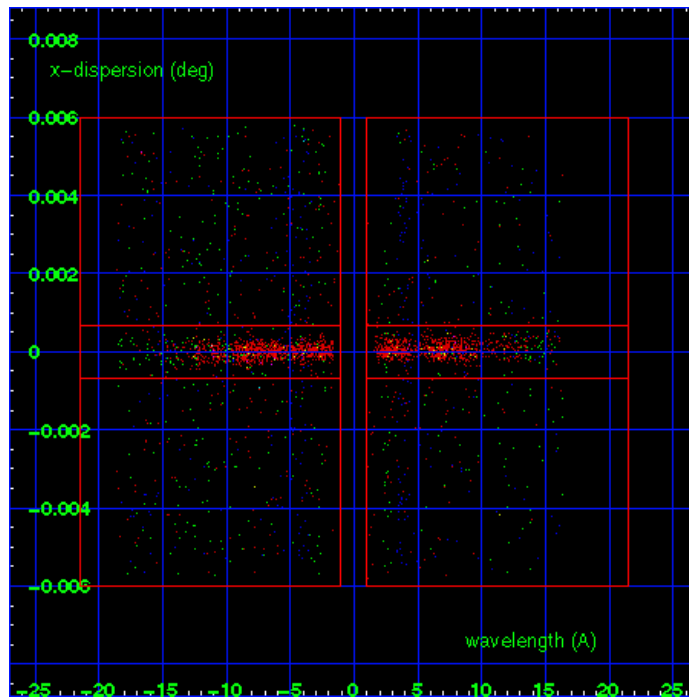
HEG Order Sort 123



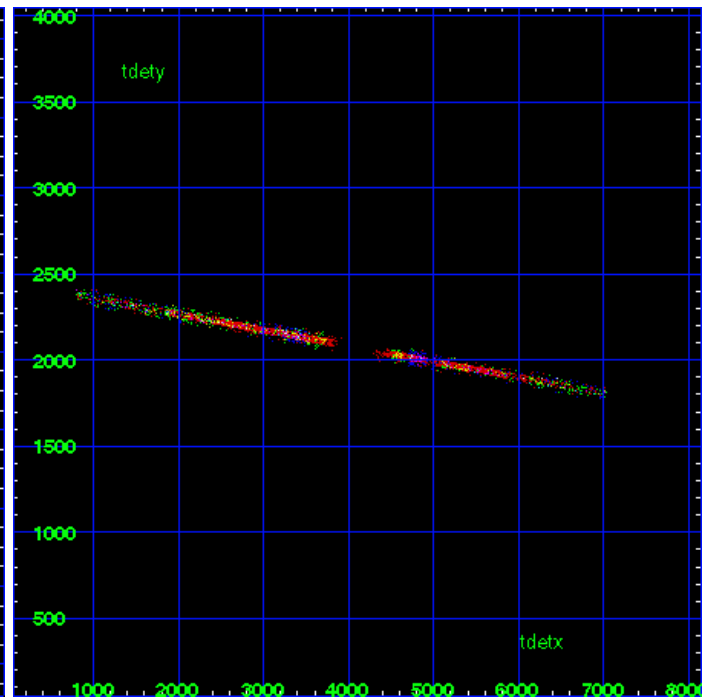
HEG Zero Order



HEG Order Sort ALL

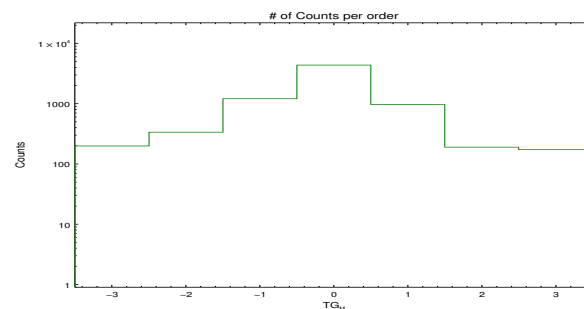


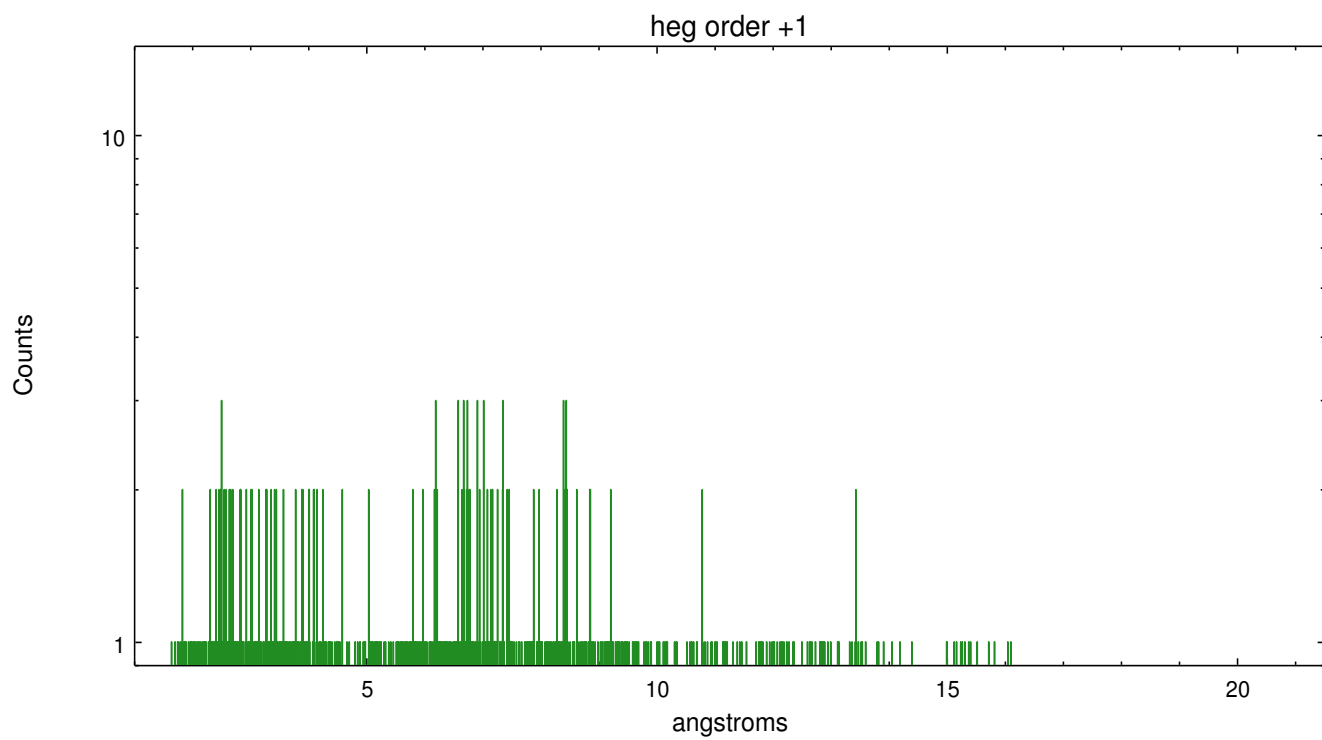
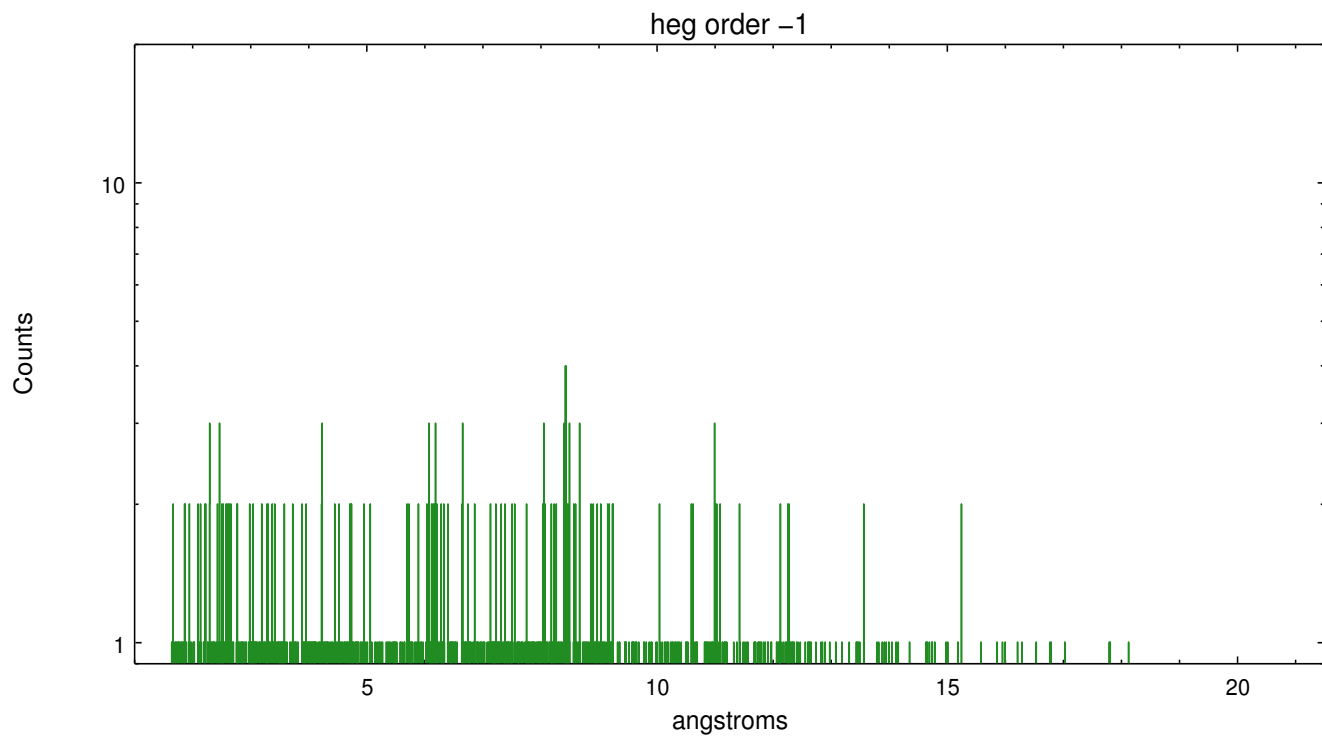
Spot Image HEG



Full Detector HEG

	order -3	order -2	order -1	order 0	order 1	order 2	order 3
Events	199	337	1215	4394	971	190	173

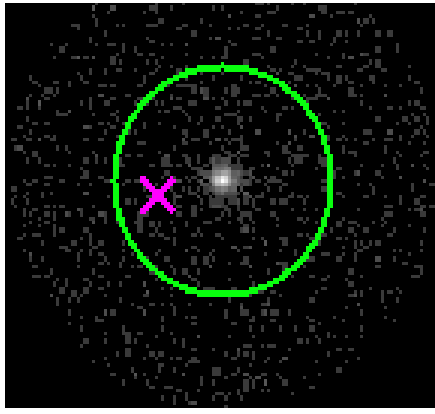




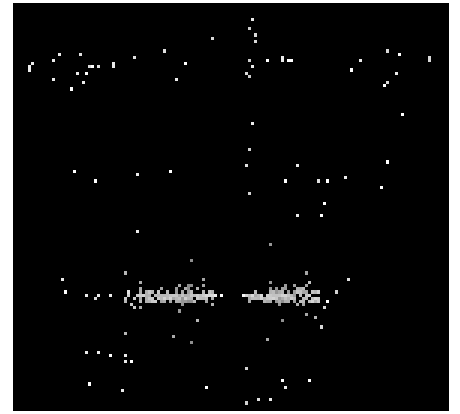
3.2 MEG Arm



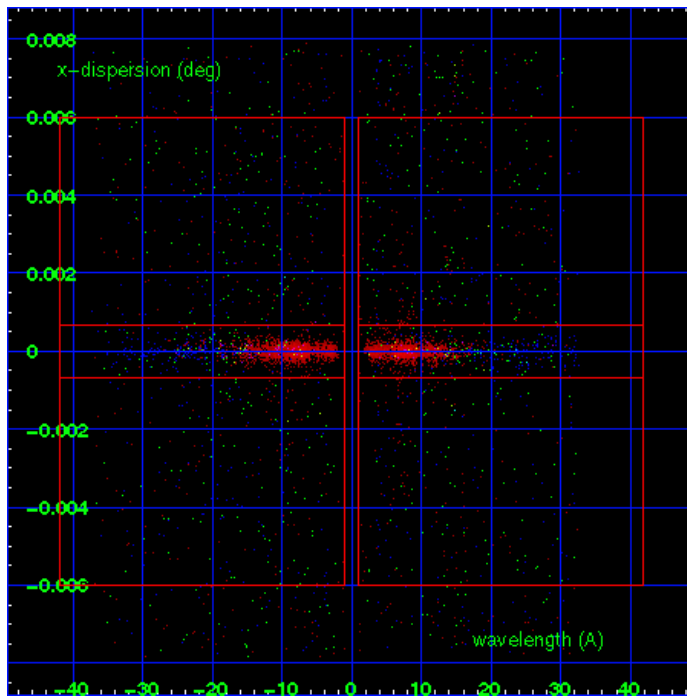
MEG Order Sort 123



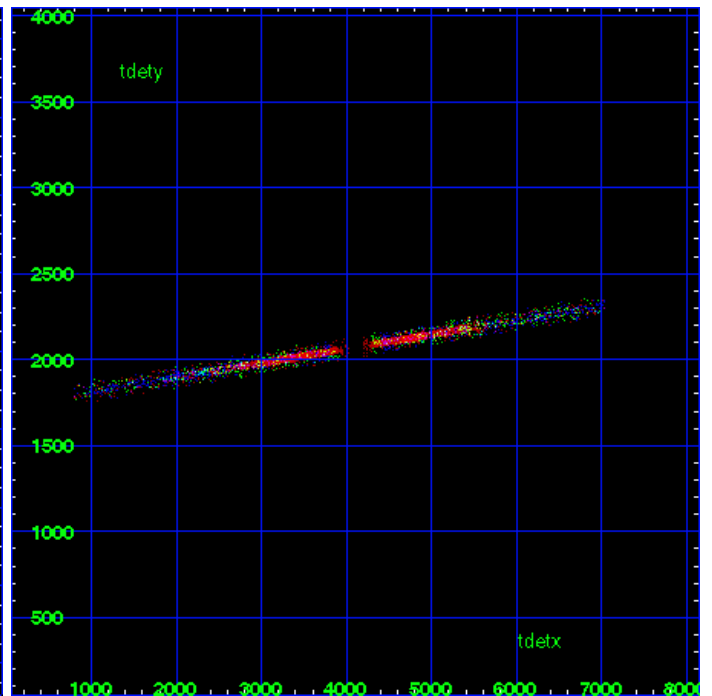
MEG Zero Order



MEG Order Sort ALL

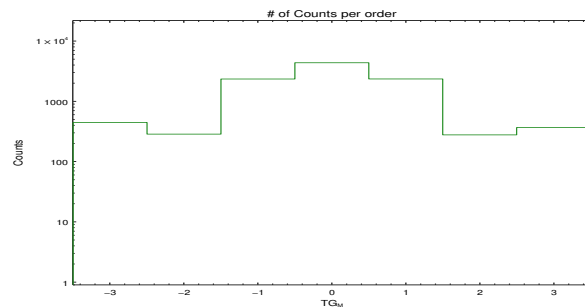


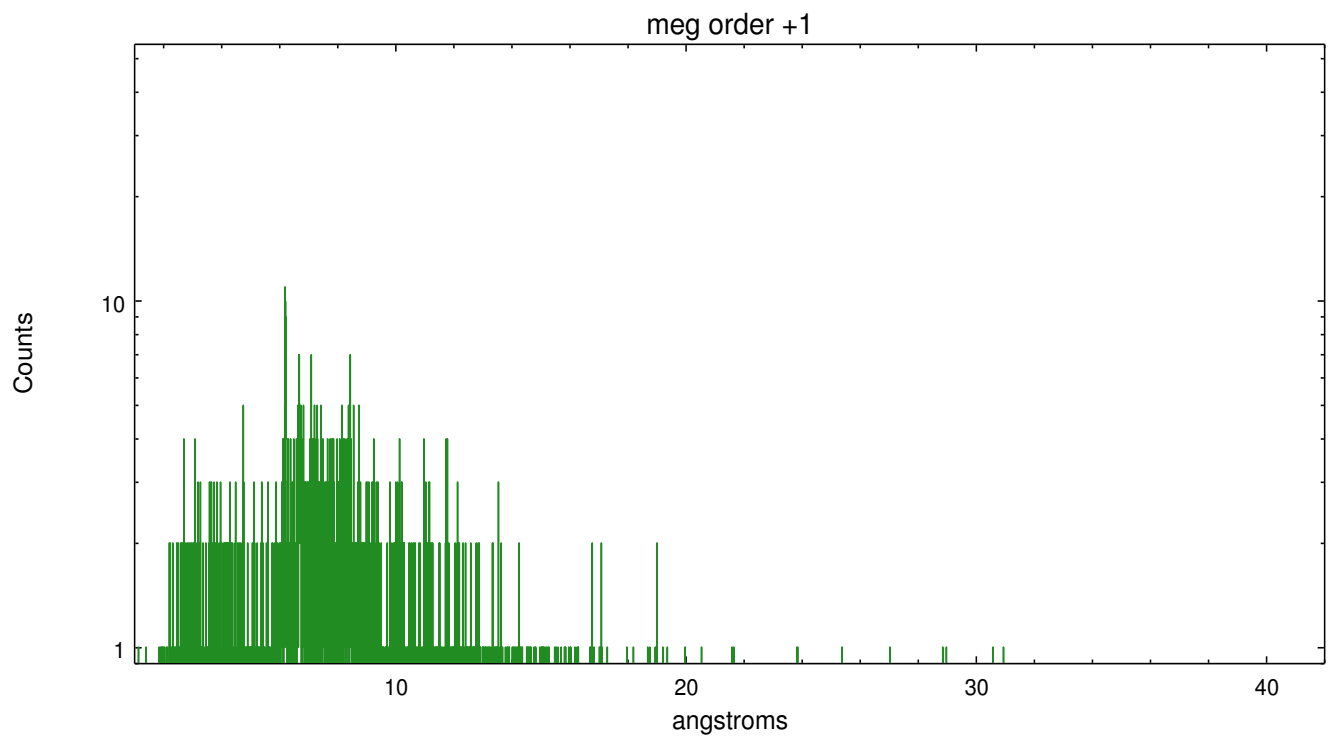
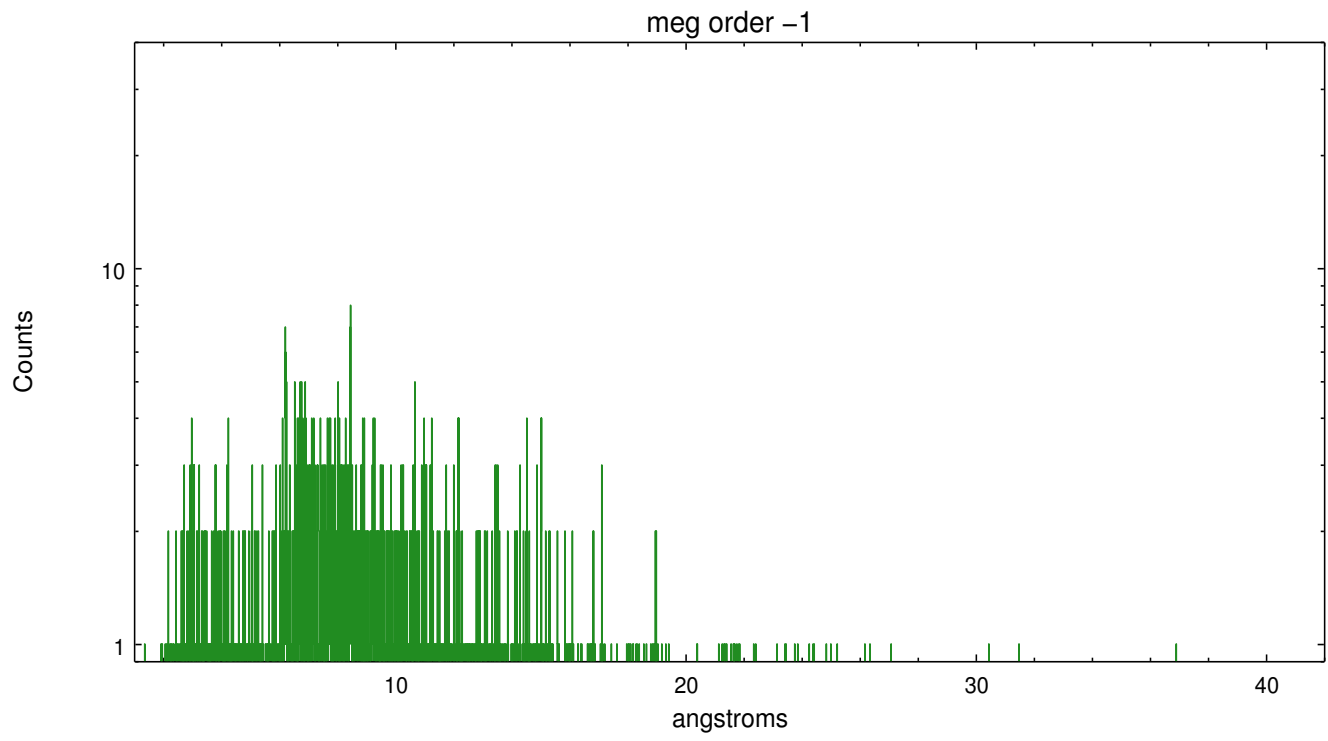
Spot Image MEG



Full Detector MEG

	order -3	order -2	order -1	order 0	order 1	order 2	order 3
Events	447	286	2358	4394	2363	278	368





A Summary

A.1 Status

V&V Scientist	Joy Nichols
V&V Date (YYYY-MM-DD)	2013.01.24
V&V Edition	1
V&V Disposition and Status	OK
V&V Charge Time	33.1675

A.2 Comments