

V&V Reference Report

L2 ASCDS Version : 8.4.3.1

Observation 6392 - L2 Version 2
Chandra X-Ray Center

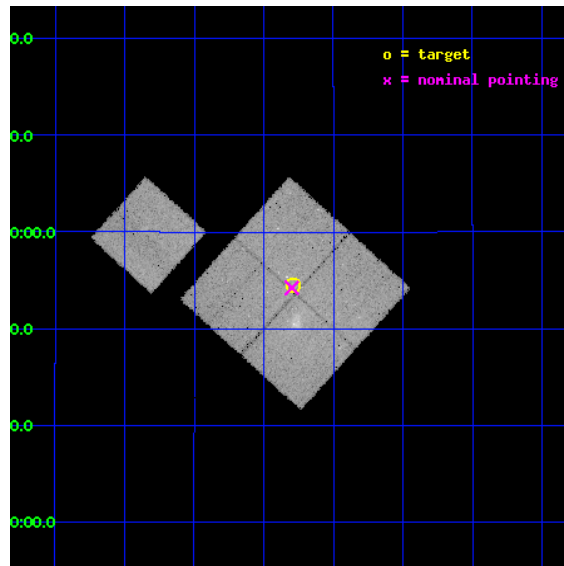
L2 Processing Date : Mar 23 2012

Contents

1	Front	2
2	OBI	3
2.1	OBI	3
2.1.1	Images	3
2.1.2	Bias	3
2.1.3	Parameters	4
2.1.4	Events	4
2.2	Compared Parameters	5
2.3	Aspect	6
2.4	Star Slots	9
2.4.1	Slot 3	9
2.4.2	Slot 4	10
2.4.3	Slot 5	11
2.4.4	Slot 6	12
2.4.5	Slot 7	13
2.5	FID Slots	14
2.5.1	Slot 0	14
2.5.2	Slot 1	15
2.5.3	Slot 2	16
A	Summary	17
A.1	Status	17
A.2	Comments	17

1 Front

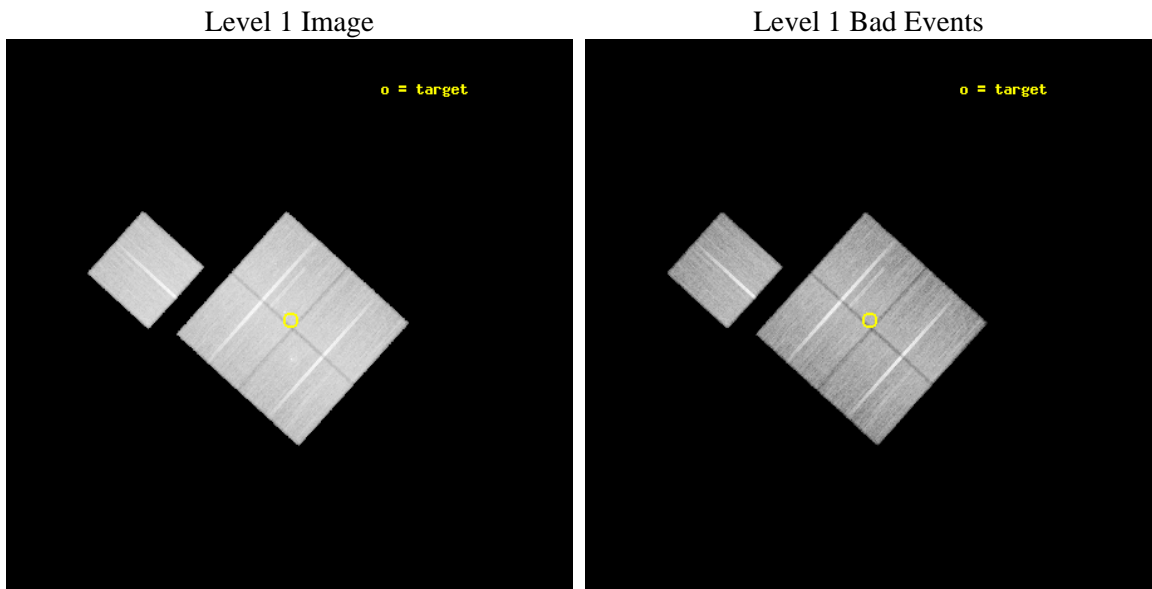
seq_num	701058	Sequence number
obs_id	6392	Observation id
title	A Chandra Study of Two Nearby, Powerful Radio Galaxies in Poor Environments	Proposal title
observer	Dr. Ralph Kraft	Principal investigator
object	3C 442A	Source name
dtcycle	0	
cycle	P	events from which exps? Prim/Second/Both
ra_targ	333.69794	Observer's specified target RA [deg]
dec_targ	13.908241	Observer's specified target Dec [deg]
ra_nom	333.69952718667	Nominal RA [deg]
dec_nom	13.903858185146	Nominal Dec [deg]
roll_nom	312.16764439576	Nominal Roll [deg]
revision	2	Processing version of data
ontime	33126.558966011	Sum of GTIs [s]
livetime	32693.736085702	Livetime [s]
ontime0	33126.558966041	Sum of GTIs [s]
ontime1	33126.558966011	Sum of GTIs [s]
ontime2	33126.558966041	Sum of GTIs [s]
ontime3	33126.558966011	Sum of GTIs [s]
ontime6	33120.277065367	Sum of GTIs [s]
l2events	151624	Number of level 2 events



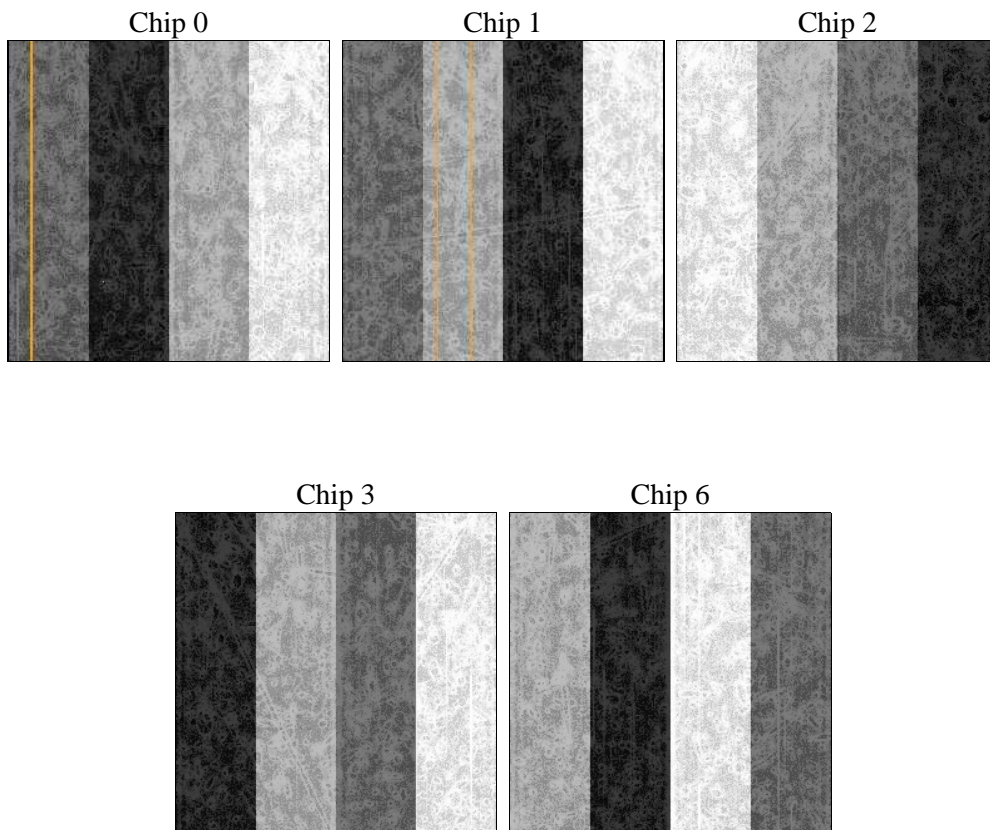
2 OBI

2.1 OBI

2.1.1 Images



2.1.2 Bias



2.1.3 Parameters

obi_num	1	Obi number	sched_exp_time	33000.000000	[s] Scheduled observation exposure time
ascdsver	8.4.3	Processing system revision	ontime	33126.558966011	Sum of GTIs [s]
caldbver	4.4.8	 	ontime0	33126.558966041	Sum of GTIs [s]
date	2012-03-23T14:29:21	Date and time of file creation	ontime1	33126.558966011	Sum of GTIs [s]
revision	2	Processing version of data	ontime2	33126.558966041	Sum of GTIs [s]
			ontime3	33126.558966011	Sum of GTIs [s]
			ontime6	33120.277065367	Sum of GTIs [s]
			l1events	1415074	Number of level 1 events

2.1.4 Events

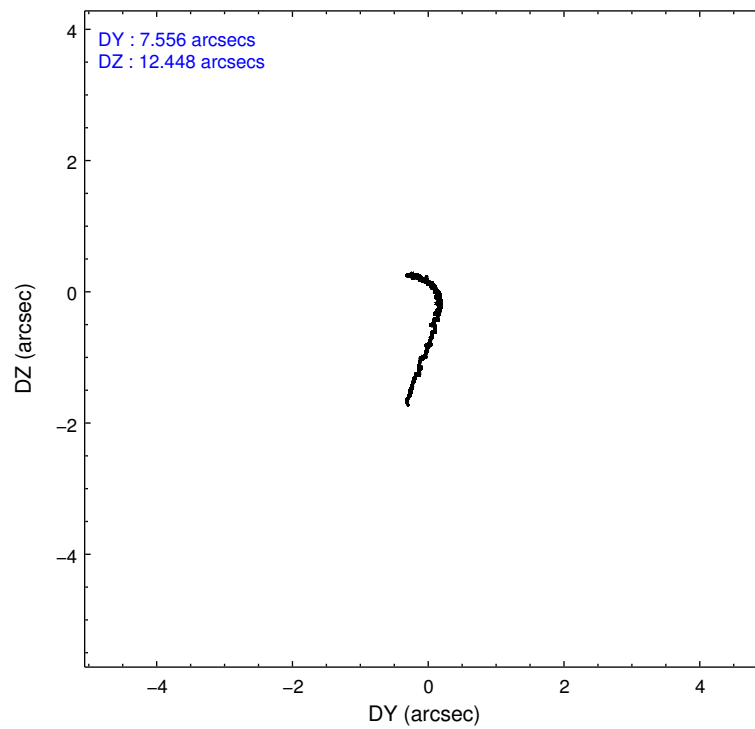
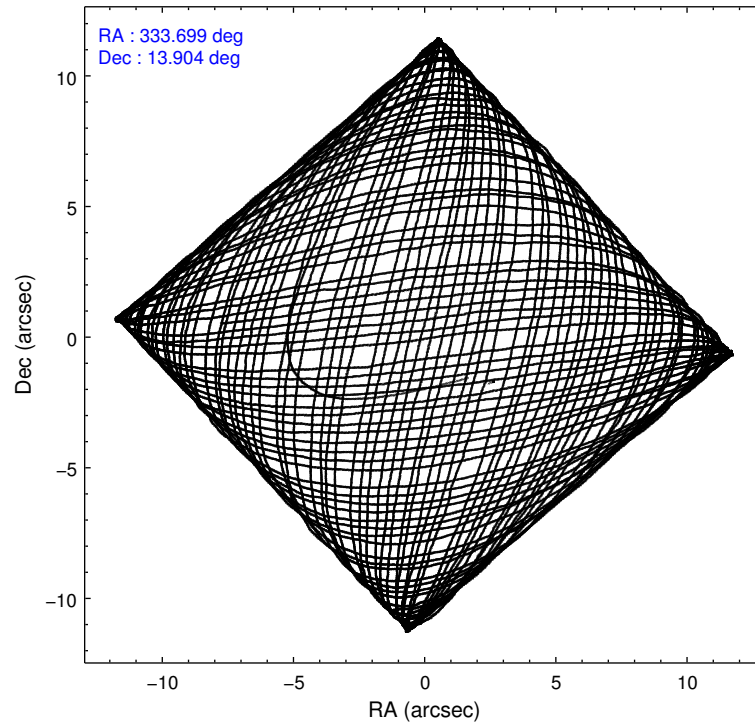
	ccd 0	ccd 1	ccd 2	ccd 3	ccd 6
level 1 events	269986	274320	292169	286442	292157
rejected events	231035	238151	257796	253344	259726
rejected %	85%	86%	88%	88%	88%

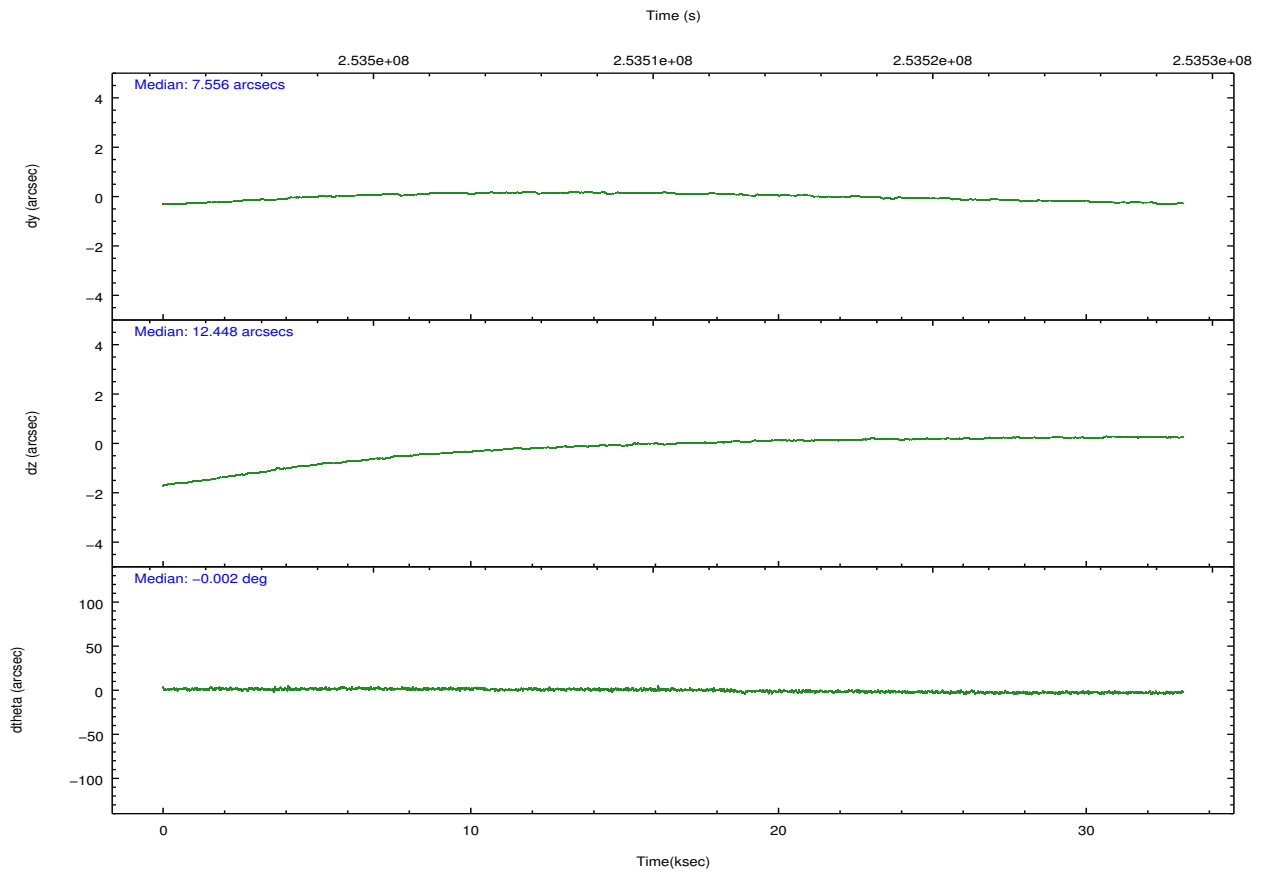
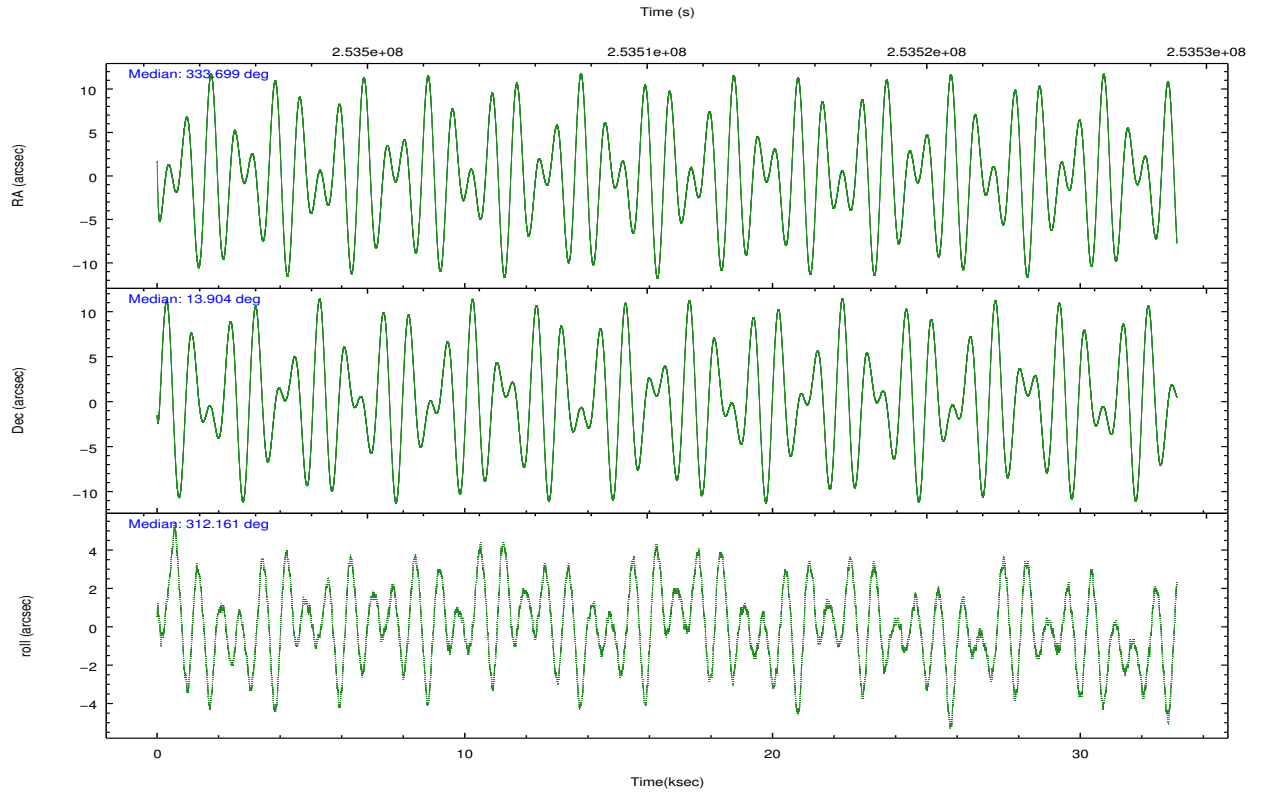
	ccd 0	ccd 1	ccd 2	ccd 3	ccd 6
grade 0 events	19896	15708	16791	15676	13323
	7%	5%	5%	5%	4%
grade 1 events	186	125	220	181	143
	0%	0%	0%	0%	0%
grade 2 events	8027	8234	7265	6551	7357
	2%	3%	2%	2%	2%
grade 3 events	3438	3538	3199	3289	3290
	1%	1%	1%	1%	1%
grade 4 events	3412	3491	3290	3282	3211
	1%	1%	1%	1%	1%
grade 5 events	11562	12658	11012	13323	13100
	4%	4%	3%	4%	4%
grade 6 events	5898	7003	5486	6019	6908
	2%	2%	1%	2%	2%
grade 7 events	217567	223563	244906	238121	244825
	80%	81%	83%	83%	83%

2.2 Compared Parameters

Parameter	Planned	Actual	Parameter	Planned	Actual
Instrument	ACIS	ACIS	Obspar format version number	7	7
Detector	ACIS-01236	ACIS-01236	Obspar file type	PREDICTED	ACTUAL
Grating	NONE	NONE	Obspar update status	NONE	UPDATED
Data mode	VFAINT	VFAINT	Number of optional ACIS chips dropped	0	0
Observation mode	POINTING	POINTING	On-chip summing requested	N	N
[deg] Pointing RA	333.672623	333.6995271866711	Subarray requested	NONE	NONE
[deg] Pointing Dec	13.912141	13.9038581851458	Alternating exposures requested	N	N
[deg] Pointing Roll	311.965425	312.1676443957624	[s] Primary exposure time	0.000000	3.1
[mm] SIM focus pos	-0.782348	-0.7809083437167272			
[mm] SIM defocus	0	0.001439871863259334			
[mm] SIM translation stage pos	-233.592463	-233.5874344608287			
[mm] SIM translation stage offset	0	-0.005018542100998502			
[s] Observation start time (MET)	253494288.184000	253492452.02626			
Observation start date	2006-01-12T23:03:43	2006-01-12T22:34:12			
[s] Observation end time (MET)	253527288.184000	253528977.90295			
Observation end date	2006-01-13T08:13:43	2006-01-13T08:42:57			
Read mode	TIMED	TIMED			

2.3 Aspect



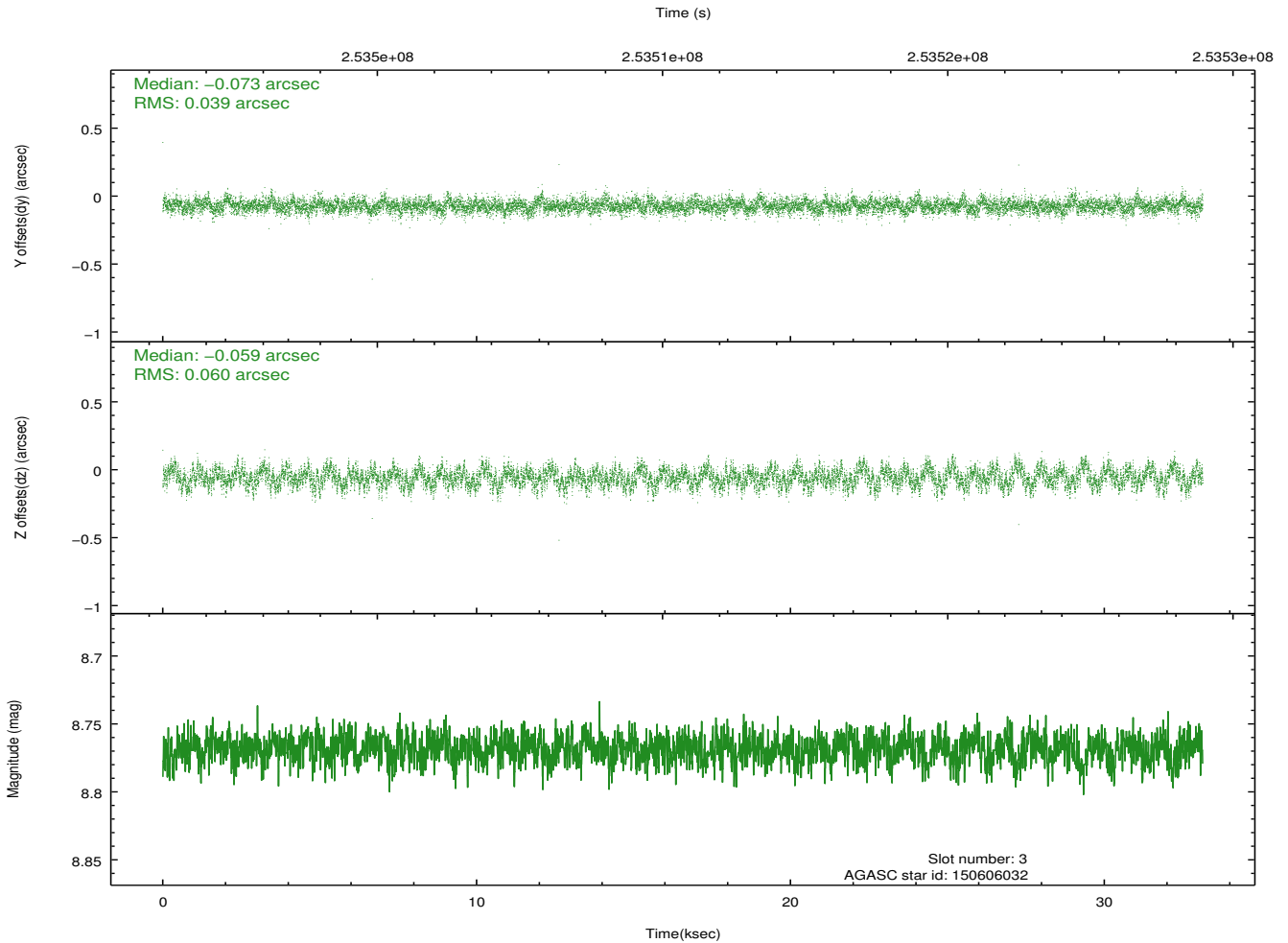
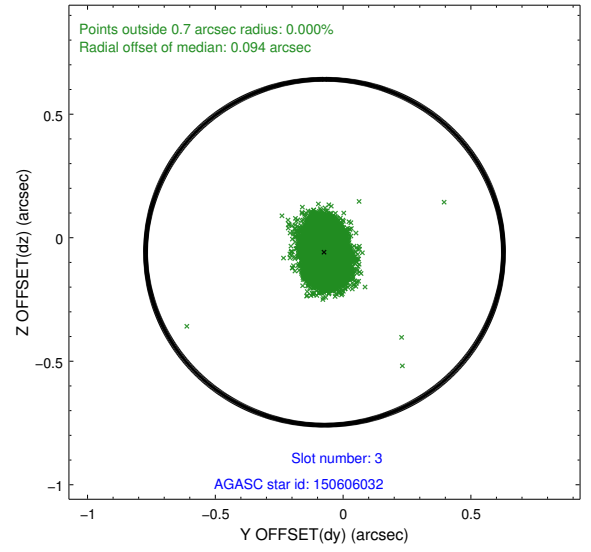
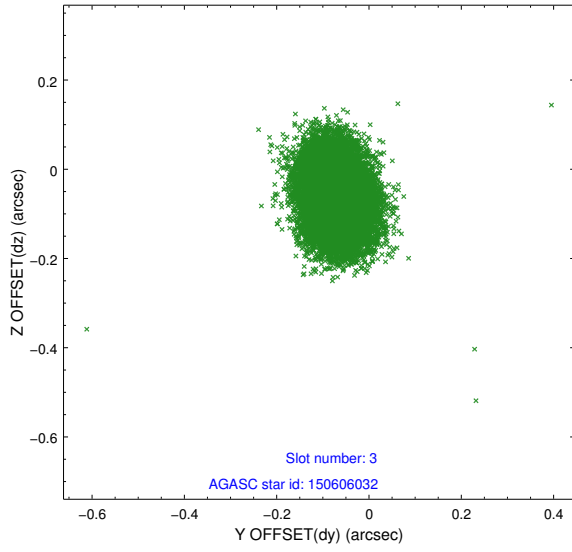


Slot Statistics

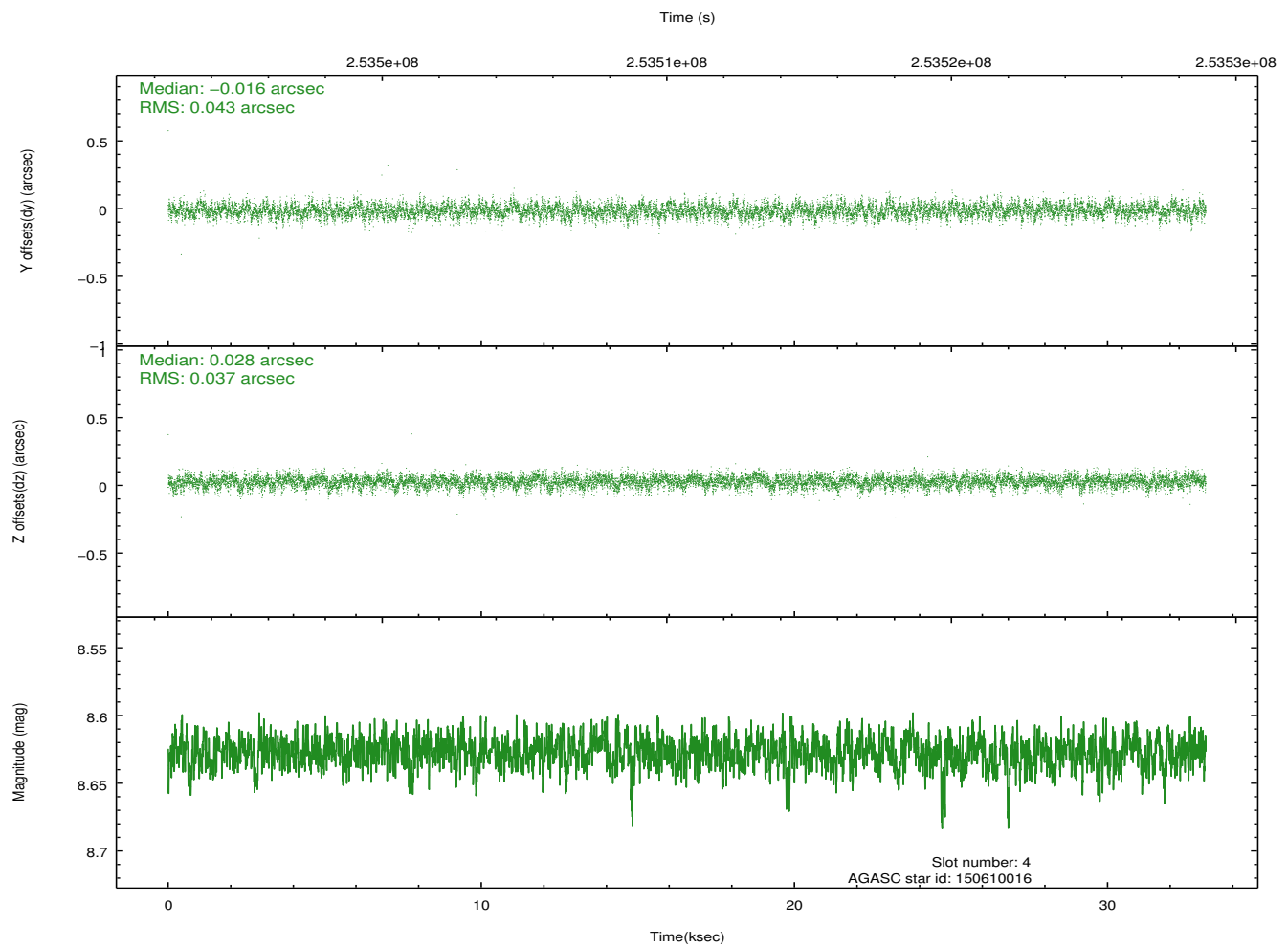
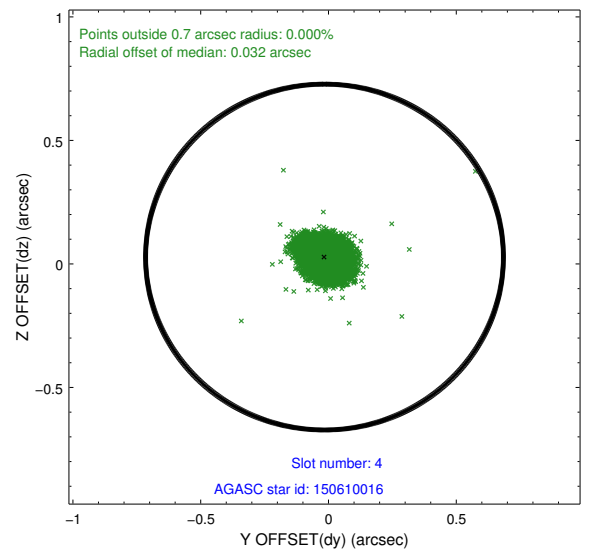
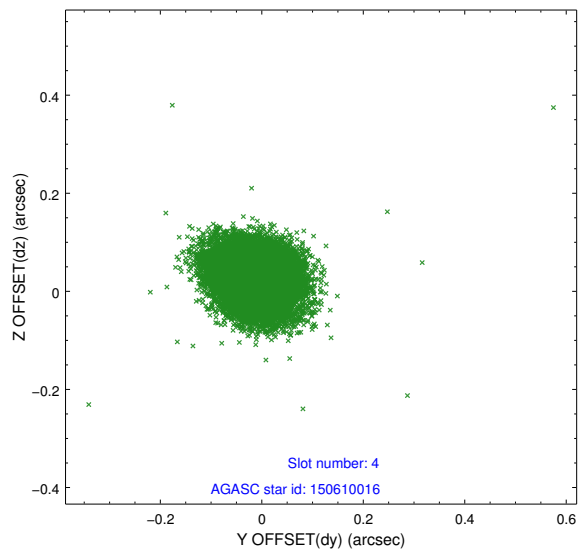
slot	status	id	mag	n_pts	med_dy	med_dz	dr1	dr2	ra	dec	mean_y	mean_z
0	FID	ACIS-I-1	7.24	8081	-0.061	0.001	0.015	0.025	0.000000	0.000000	932.07	-835.76
1	FID	ACIS-I-2	7.14	8082	-0.143	-0.061	0.011	0.016	0.000000	0.000000	-762.07	-842.29
2	FID	ACIS-I-4	7.17	8083	0.107	0.129	0.010	0.029	0.000000	0.000000	2152.10	1064.15
3	GUIDE	150606032	8.77	16164	-0.073	-0.059	0.076	0.123	333.468551	13.881130	-393.90	-604.96
4	GUIDE	150610016	8.63	16158	-0.016	0.028	0.060	0.097	333.607680	13.272180	1561.34	-1709.68
5	GUIDE	150614840	8.69	16161	0.048	-0.001	0.060	0.096	333.996804	13.803587	1048.16	581.81
6	GUIDE	150611688	8.46	16097	0.033	0.021	0.055	0.089	334.268056	13.563332	2325.50	711.76
7	GUIDE	150610304	6.77	16164	0.006	0.010	0.068	0.103	334.517012	13.950326	1867.15	2289.51

2.4 Star Slots

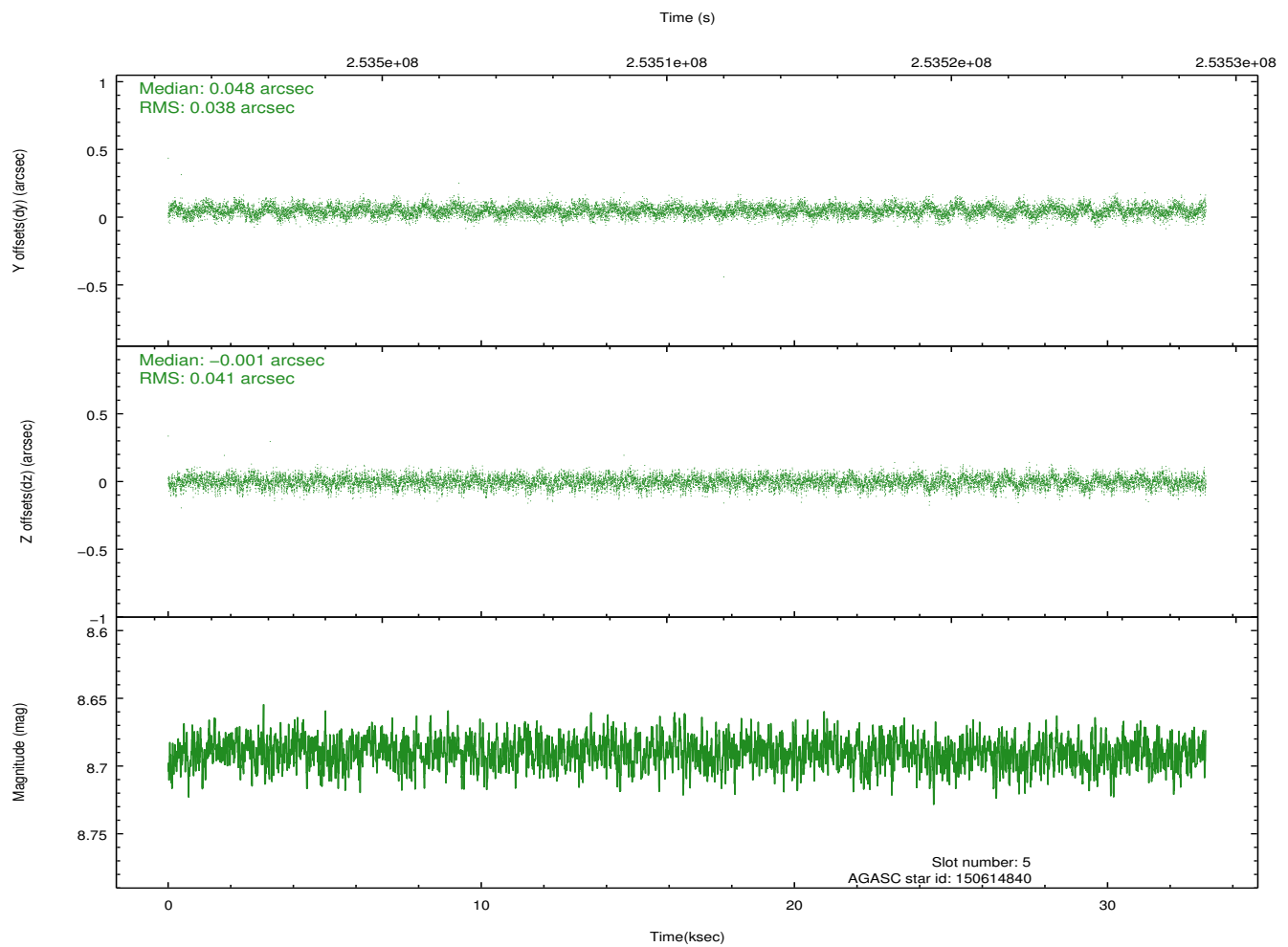
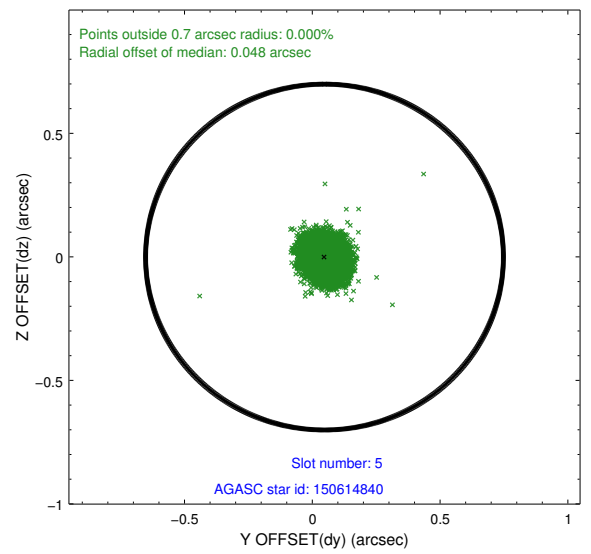
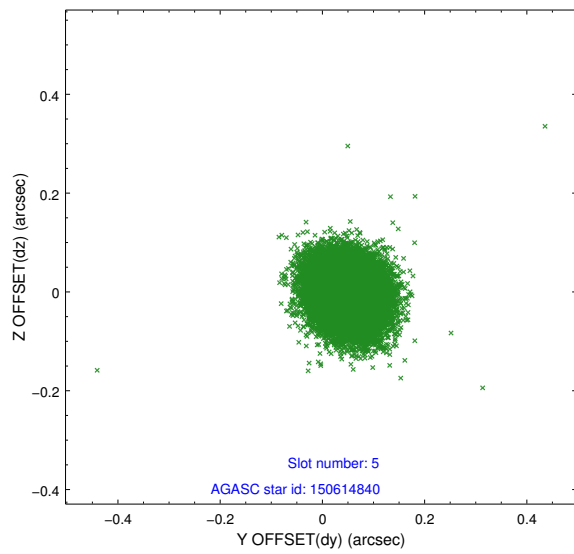
2.4.1 Slot 3



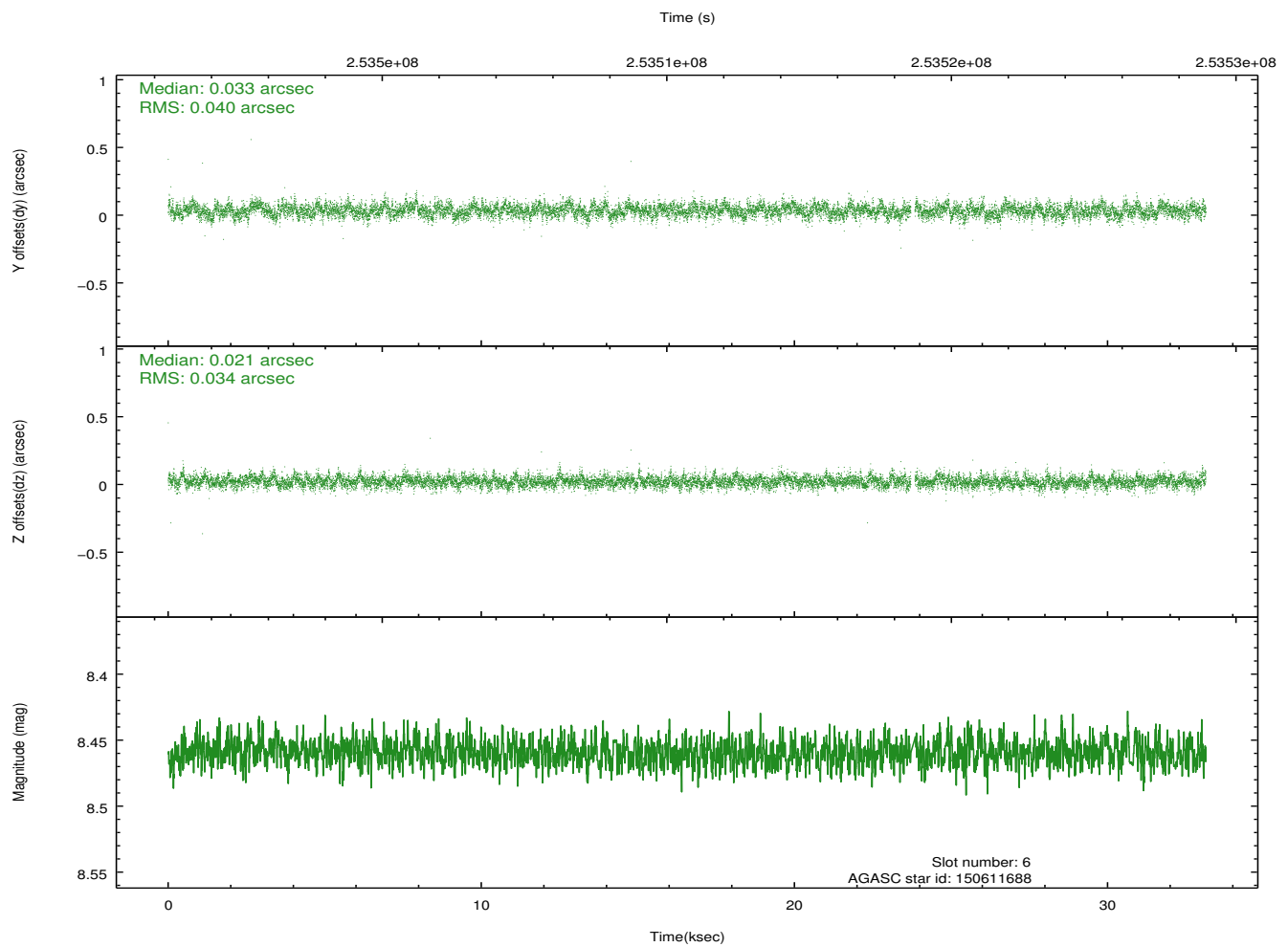
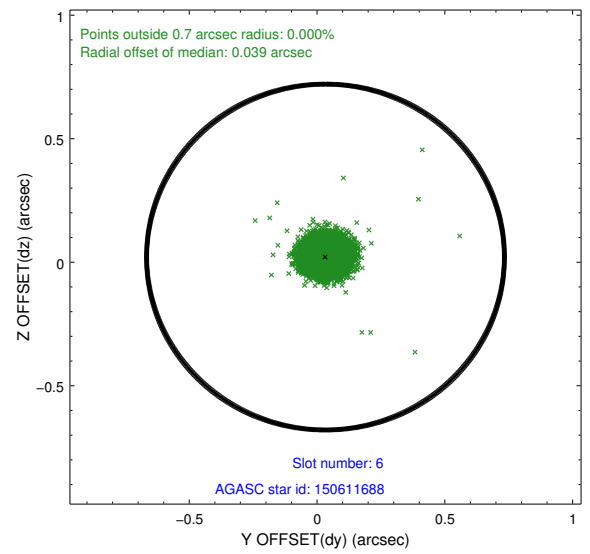
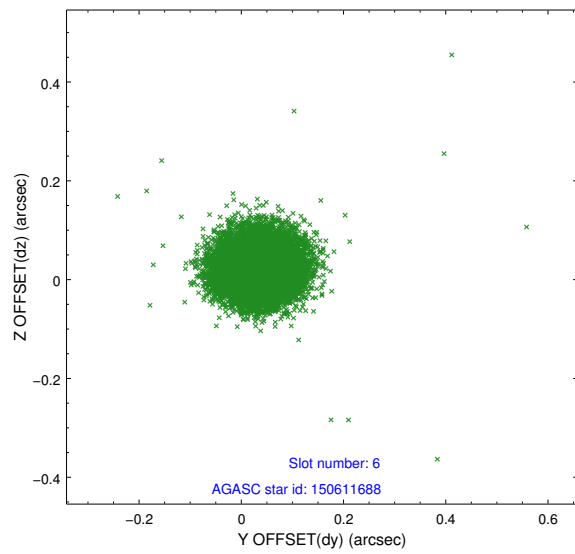
2.4.2 Slot 4



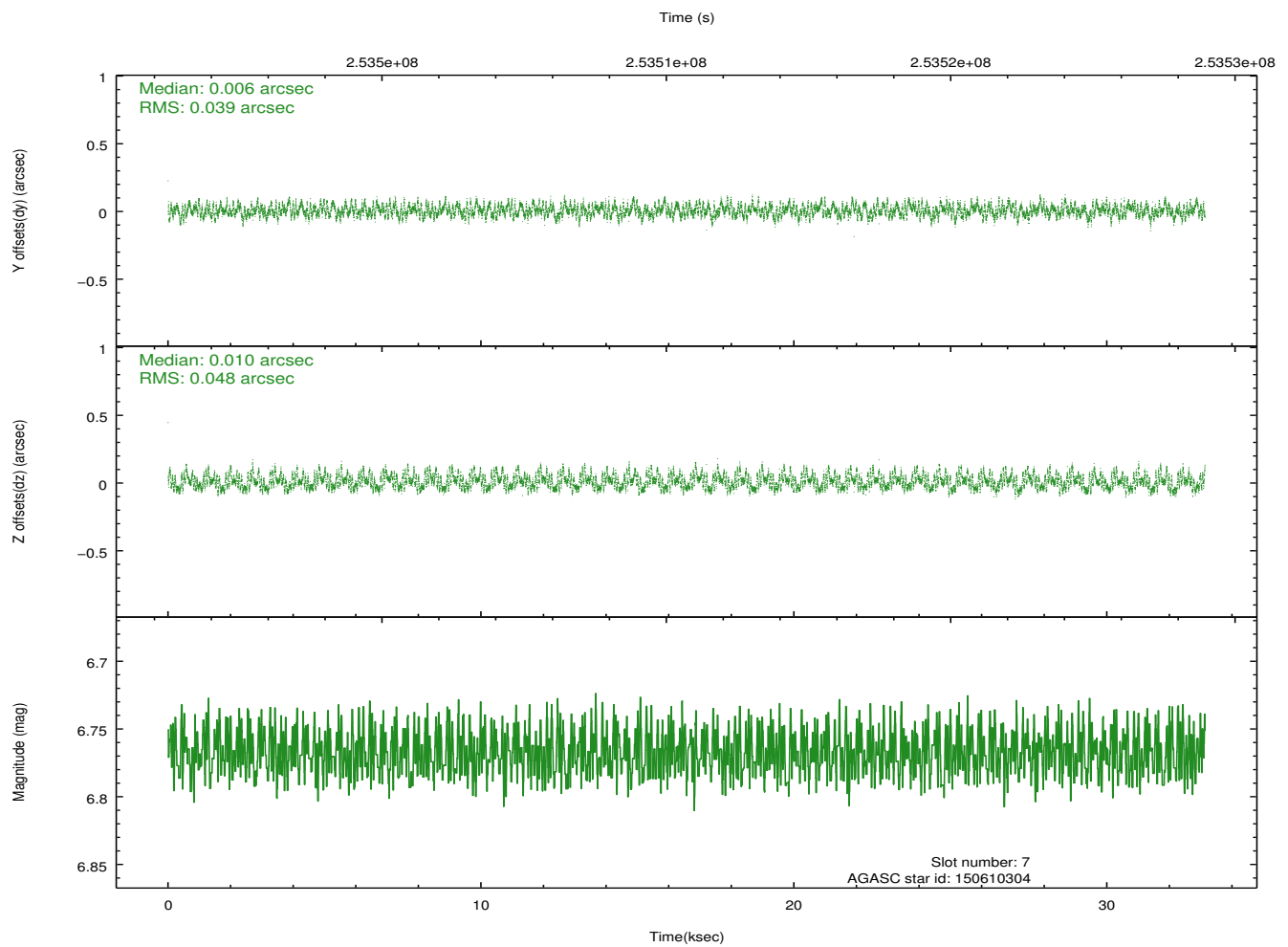
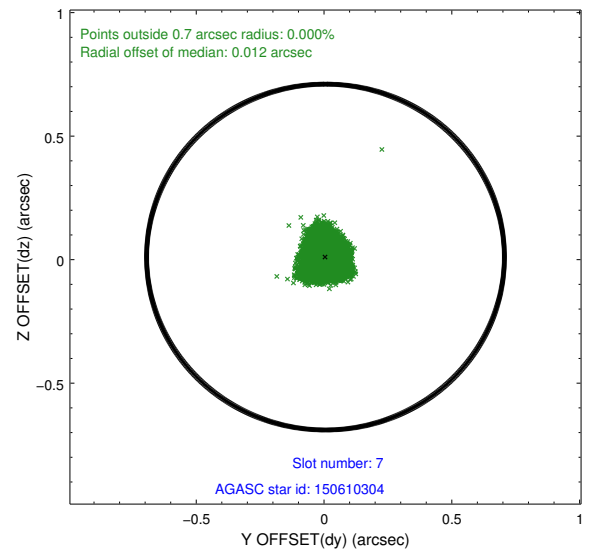
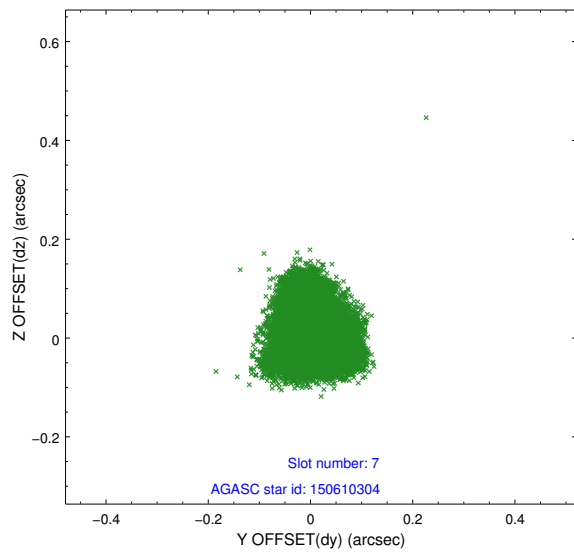
2.4.3 Slot 5



2.4.4 Slot 6

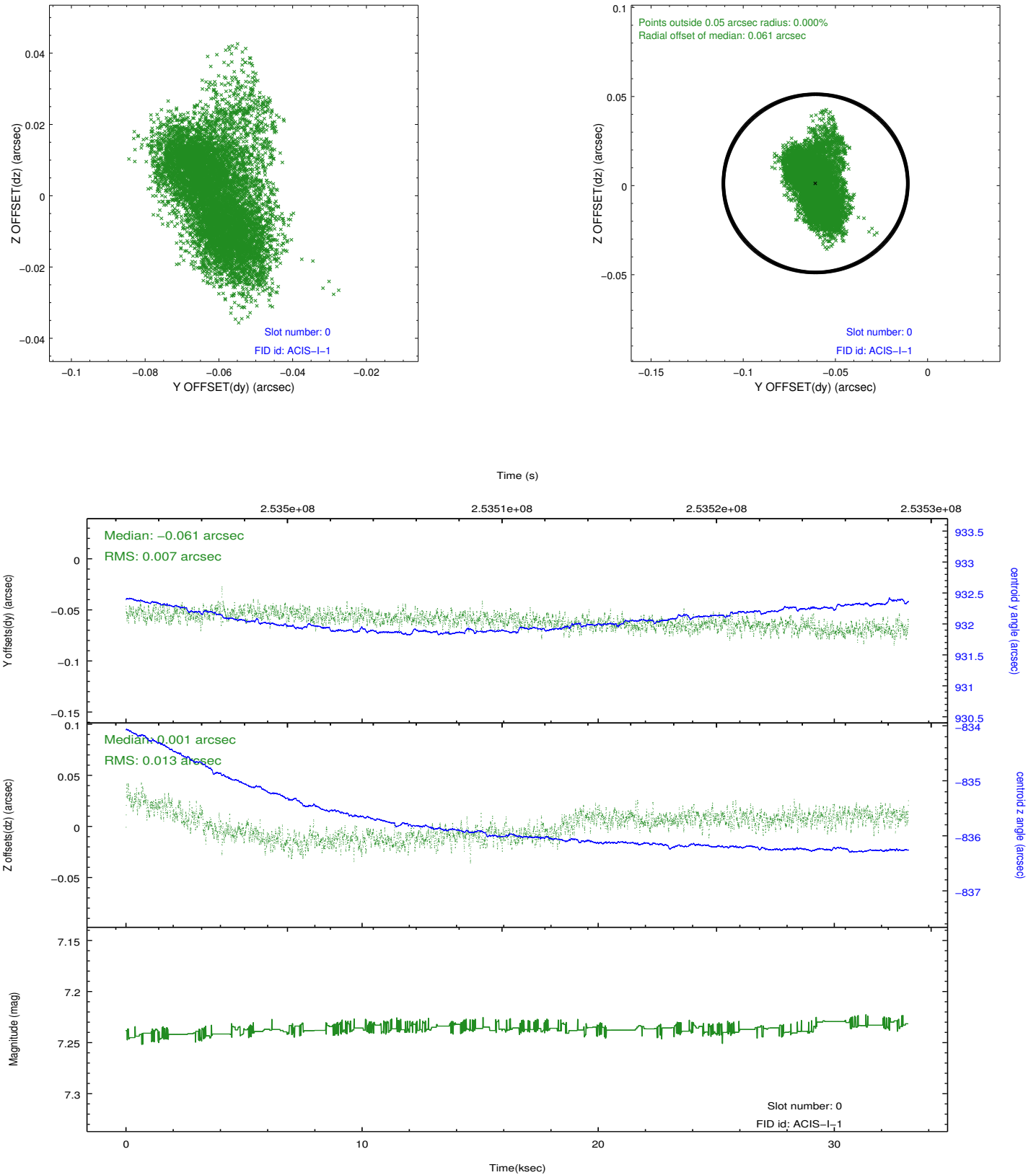


2.4.5 Slot 7

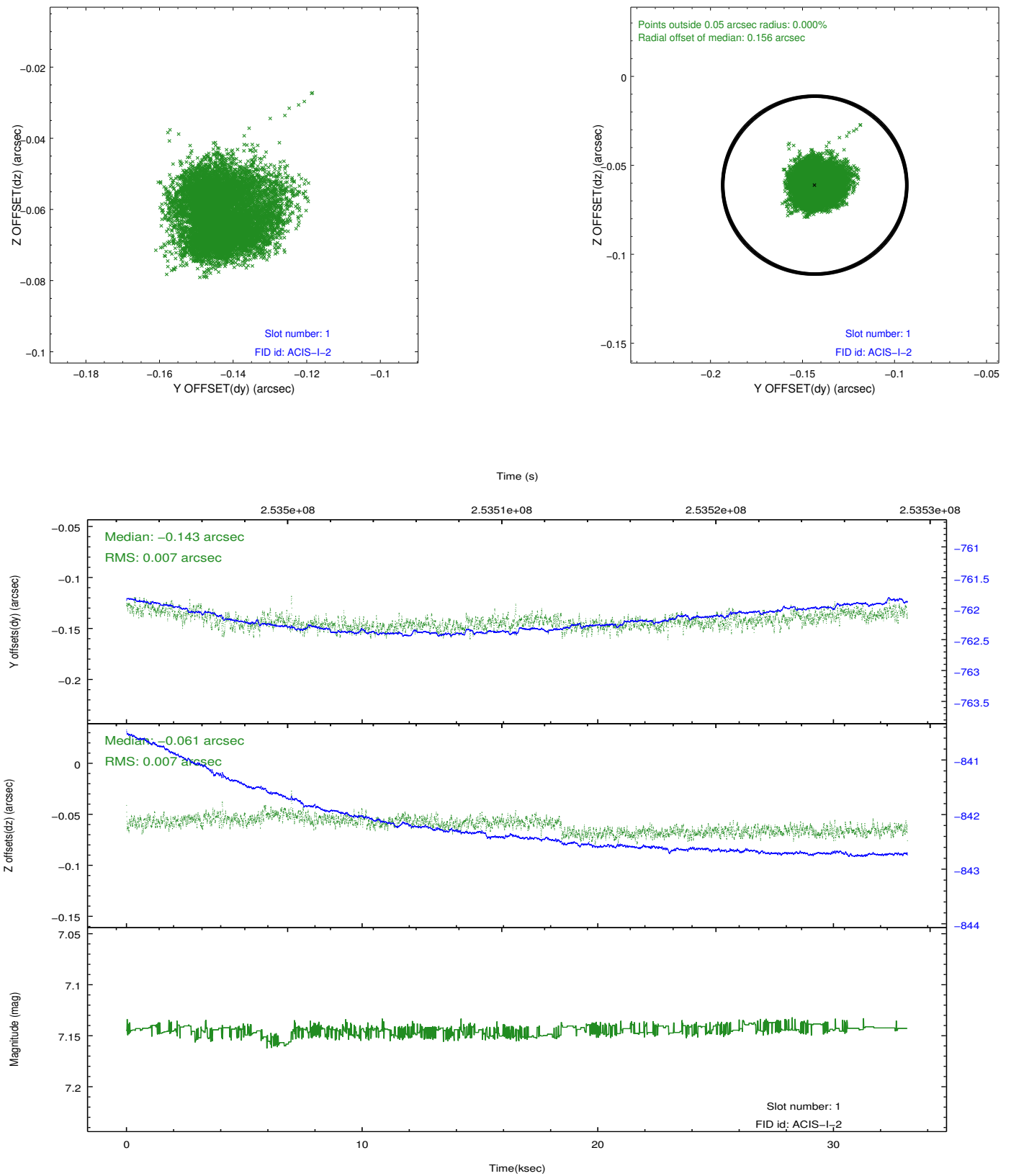


2.5 FID Slots

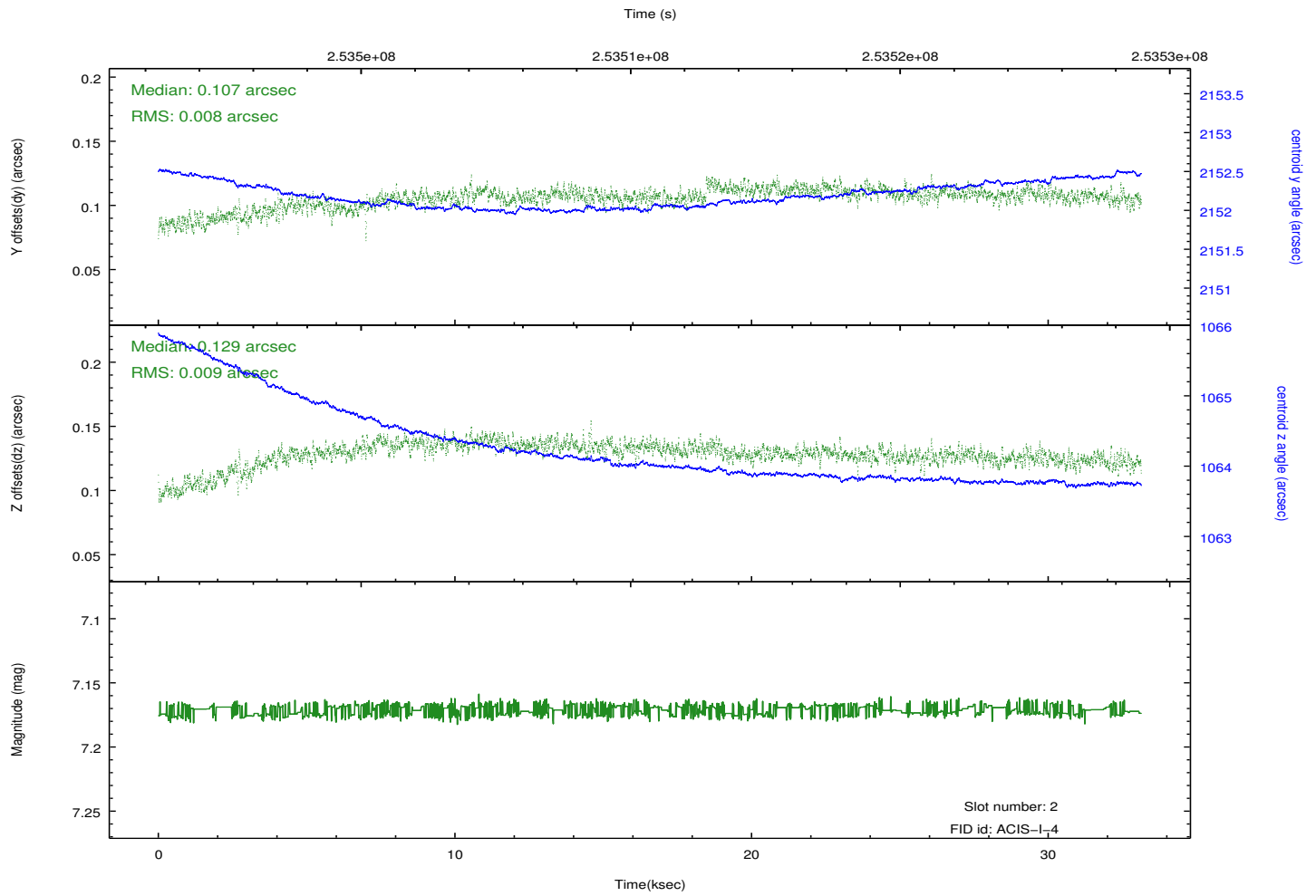
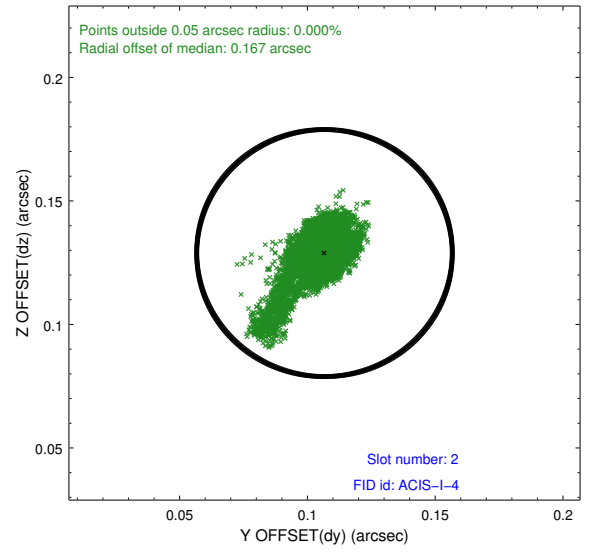
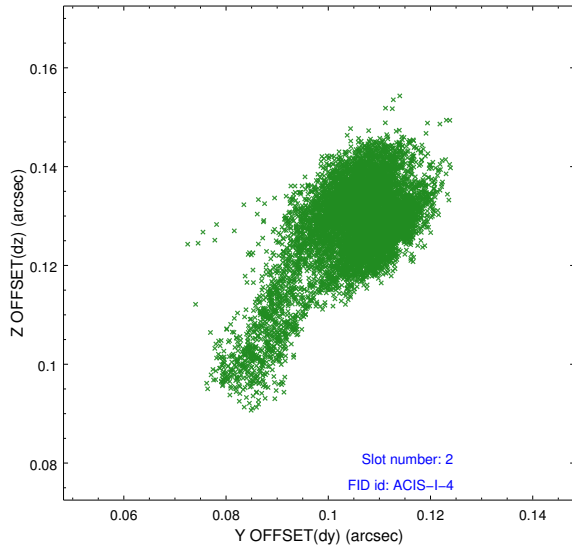
2.5.1 Slot 0



2.5.2 Slot 1



2.5.3 Slot 2



A Summary

A.1 Status

V&V Scientist	Jen Lauer
V&V Date (YYYY-MM-DD)	2012.03.23
V&V Edition	1
V&V Disposition and Status	OK
V&V Charge Time	33.1265589

A.2 Comments