

V&V Reference Report

L2 ASCDS Version : 8.4.3.1

Observation 7022 - L2 Version 2
Chandra X-Ray Center

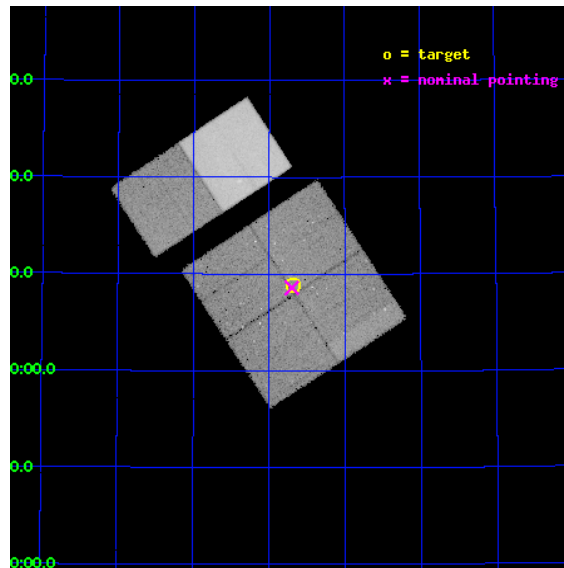
L2 Processing Date : Apr 11 2012

Contents

1	Front	2
2	OBI	3
2.1	OBI	3
2.1.1	Images	3
2.1.2	Bias	3
2.1.3	Parameters	4
2.1.4	Events	4
2.2	Compared Parameters	5
2.3	Aspect	6
2.4	Star Slots	9
2.4.1	Slot 3	9
2.4.2	Slot 4	10
2.4.3	Slot 5	11
2.4.4	Slot 6	12
2.4.5	Slot 7	13
2.5	FID Slots	14
2.5.1	Slot 0	14
2.5.2	Slot 1	15
2.5.3	Slot 2	16
A	Summary	17
A.1	Status	17
A.2	Comments	17

1 Front

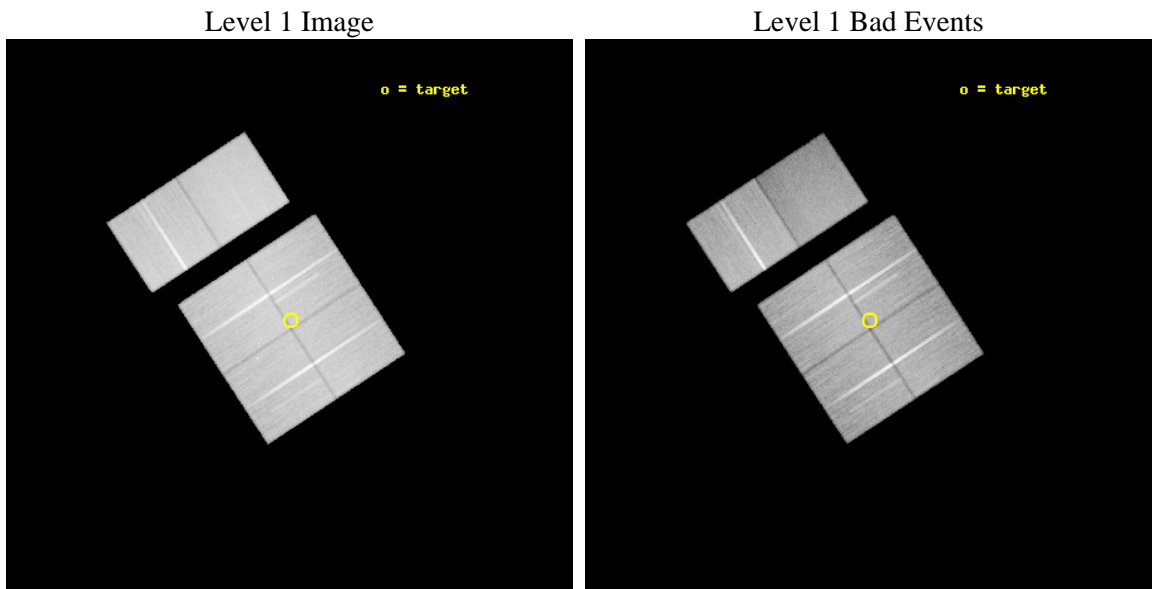
seq_num	900438	Sequence number
obs_id	7022	Observation id
title	Tracing the X-ray cosmic web at z=0.3	Proposal title
observer	Dr. Roberto Gilli	Principal investigator
object	Abell 1995 Field 2	Source name
dtcycle	0	
cycle	P	events from which exps? Prim/Second/Both
ra_targ	222.92	Observer's specified target RA [deg]
dec_targ	58.147	Observer's specified target Dec [deg]
ra_nom	222.92493003968	Nominal RA [deg]
dec_nom	58.143126000682	Nominal Dec [deg]
roll_nom	326.80085869206	Nominal Roll [deg]
revision	2	Processing version of data
ontime	50044.405578375	Sum of GTIs [s]
livetime	49410.713181818	Livetime [s]
ontime0	50041.041488051	Sum of GTIs [s]
ontime1	50041.082508147	Sum of GTIs [s]
ontime2	50037.882717252	Sum of GTIs [s]
ontime3	50044.405578375	Sum of GTIs [s]
ontime6	50044.487658381	Sum of GTIs [s]
ontime7	50044.446618378	Sum of GTIs [s]
l2events	345314	Number of level 2 events



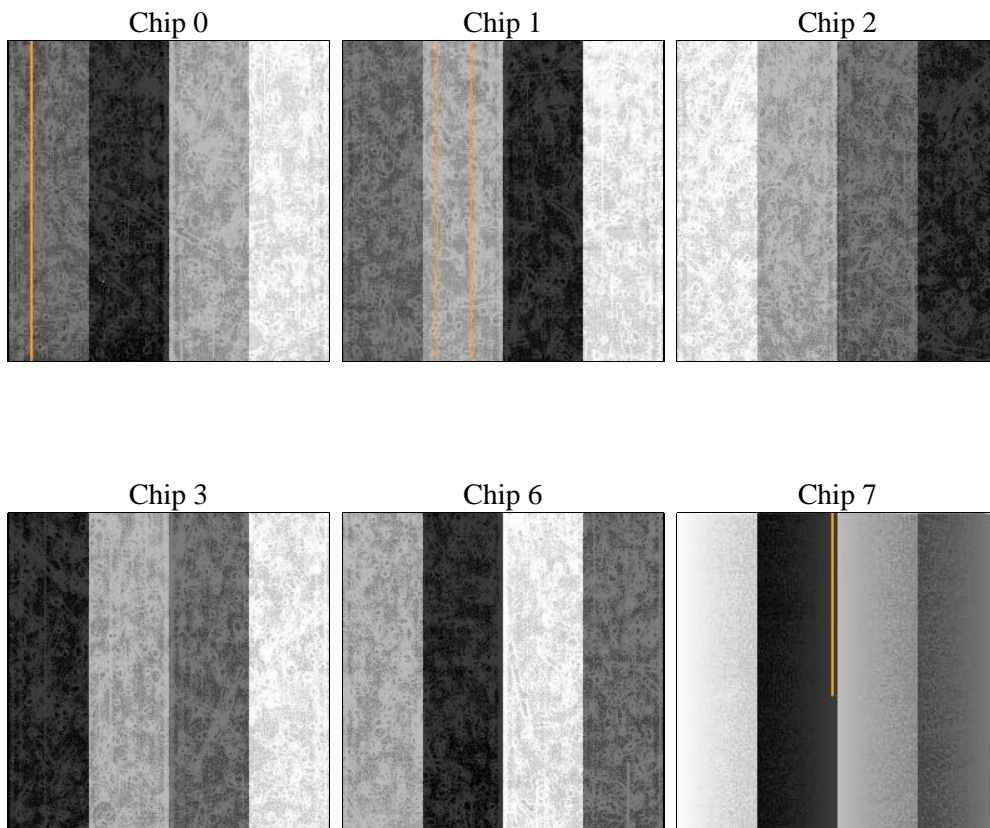
2 OBI

2.1 OBI

2.1.1 Images



2.1.2 Bias



2.1.3 Parameters

obi_num	0	Obi number	sched_exp_time	50000.000000	[s] Scheduled observation exposure time
ascdsver	8.4.3.1	Processing system revision	ontime	50044.405578375	Sum of GTIs [s]
caldbver	4.4.9	 	ontime0	50041.041488051	Sum of GTIs [s]
date	2012-04-11T02:14:21	Date and time of file creation	ontime1	50041.082508147	Sum of GTIs [s]
revision	2	Processing version of data	ontime2	50037.882717252	Sum of GTIs [s]
			ontime3	50044.405578375	Sum of GTIs [s]
			ontime6	50044.487658381	Sum of GTIs [s]
			ontime7	50044.446618378	Sum of GTIs [s]
			l1events	2335978	Number of level 1 events

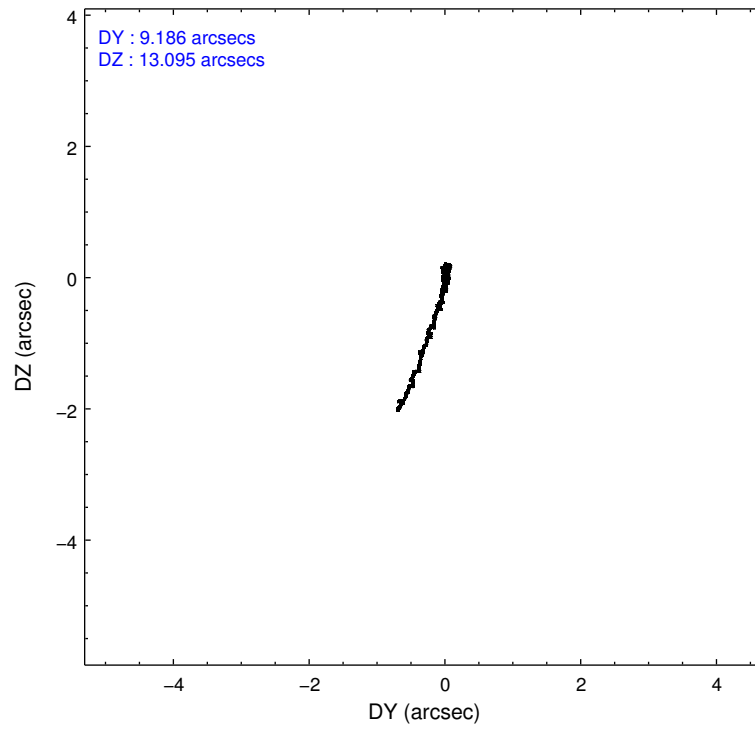
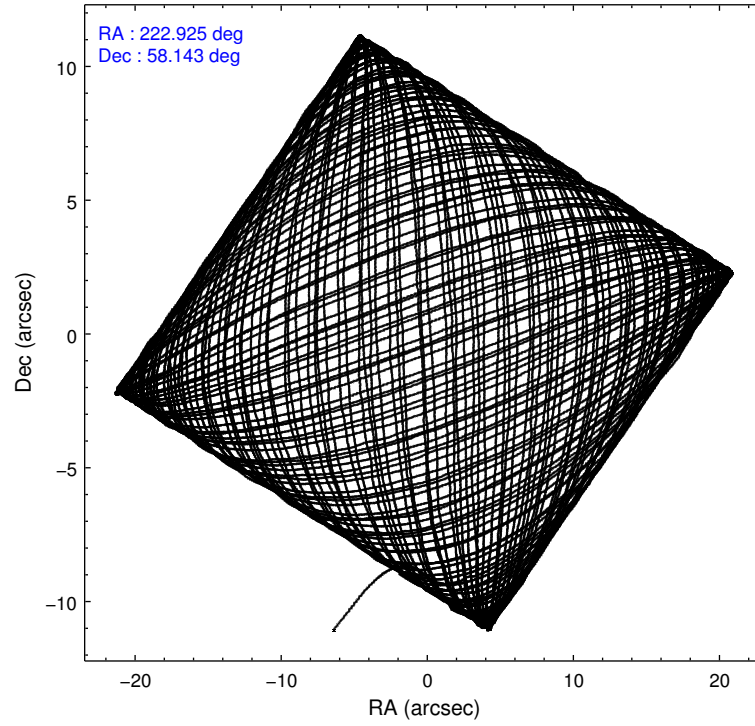
2.1.4 Events

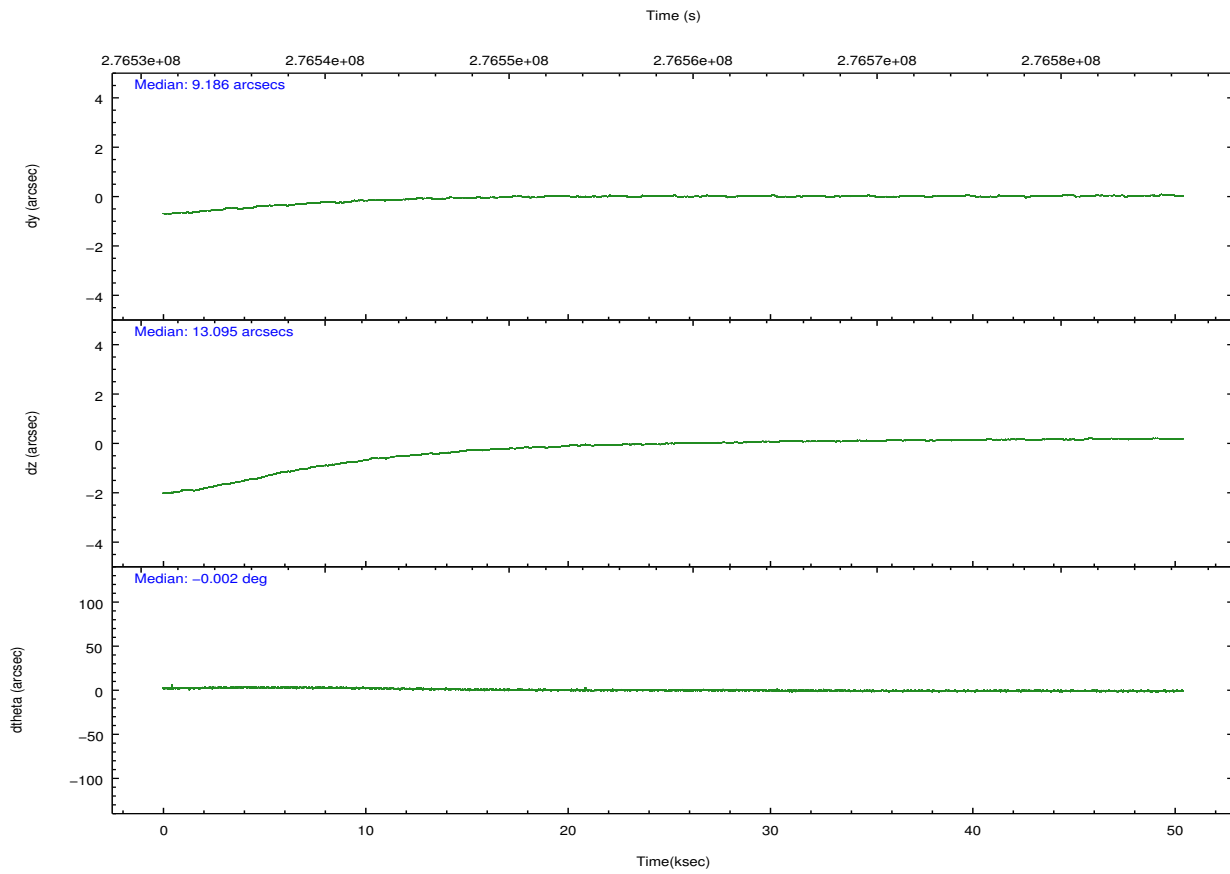
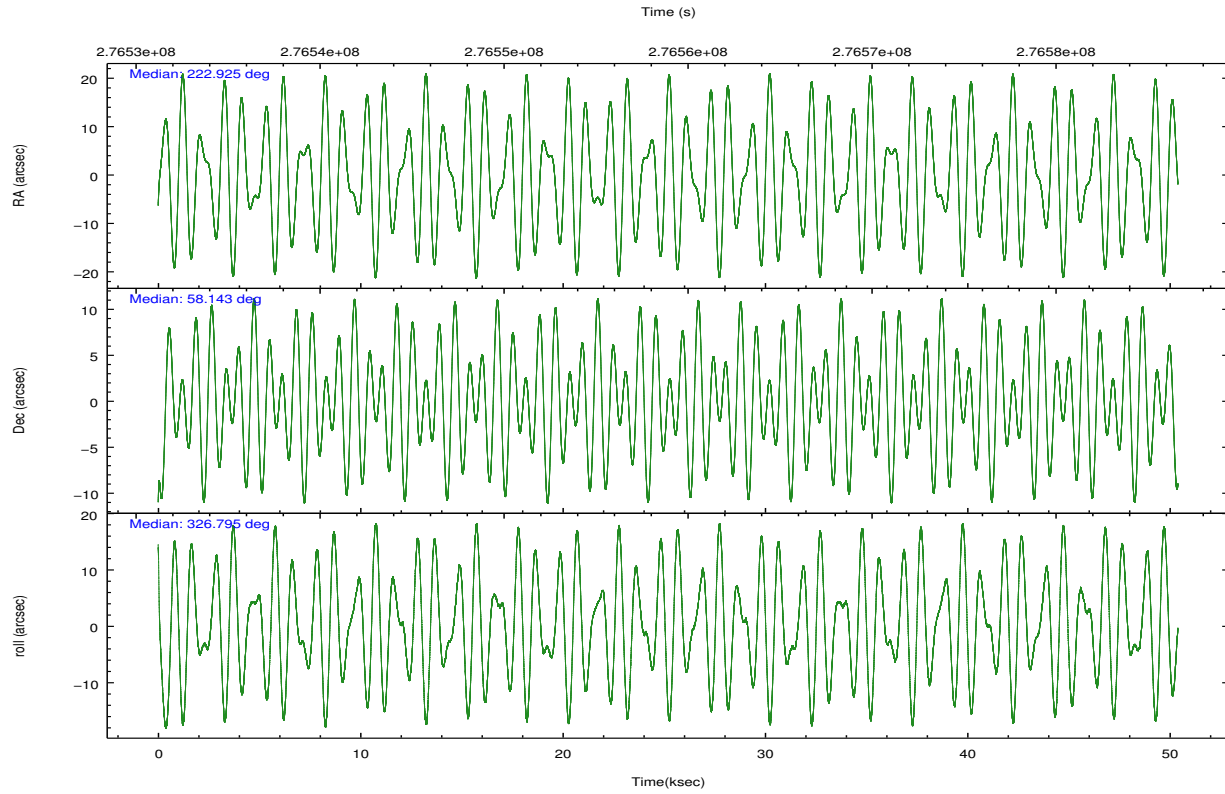
	ccd 0	ccd 1	ccd 2	ccd 3	ccd 6	ccd 7		ccd 0	ccd 1	ccd 2	ccd 3	ccd 6	ccd 7
level 1 events	362342	361315	406331	379688	403911	422391	grade 0 events	12878	15388	13976	12517	12972	18555
rejected events	325552	319126	368952	344261	365322	228985		3%	4%	3%	3%	3%	4%
rejected %	89%	88%	90%	90%	90%	54%	grade 1 events	174	175	198	187	219	537
								0%	0%	0%	0%	0%	0%
							grade 2 events	8753	9306	8685	7709	8742	38968
								2%	2%	2%	2%	2%	9%
							grade 3 events	4214	4645	3946	4074	4303	17914
								1%	1%	0%	1%	1%	4%
							grade 4 events	3958	4566	4135	4014	4187	17895
								1%	1%	1%	1%	1%	4%
							grade 5 events	12321	14313	11950	15398	15817	45185
								3%	3%	2%	4%	3%	10%
							grade 6 events	6989	8289	6641	7121	8389	100098
								1%	2%	1%	1%	2%	23%
							grade 7 events	313055	304633	356800	328668	349282	183239
								86%	84%	87%	86%	86%	43%

2.2 Compared Parameters

Parameter	Planned	Actual	Parameter	Planned	Actual
Instrument	ACIS	ACIS	Obspar format version number	7	7
Detector	ACIS-012367	ACIS-012367	Obspar file type	PREDICTED	ACTUAL
Grating	NONE	NONE	Obspar update status	NONE	UPDATED
Data mode	VFAINT	VFAINT	Number of optional ACIS chips dropped	0	0
Observation mode	POINTING	POINTING	On-chip summing requested	N	N
[deg] Pointing RA	222.873081	222.9249300396818	Subarray requested	NONE	NONE
[deg] Pointing Dec	58.144555	58.14312600068221	Alternating exposures requested	N	N
[deg] Pointing Roll	326.636217	326.8008586920627	[s] Primary exposure time	0.000000	3.2
[mm] SIM focus pos	-0.782348	-0.7809083437167272			
[mm] SIM defocus	0	0.001439871863259334			
[mm] SIM translation stage pos	-233.592463	-233.5874344608287			
[mm] SIM translation stage offset	0	-0.005018542100998502			
[s] Observation start time (MET)	276534112.184000	276532997.09001			
Observation start date	2006-10-06T15:00:47	2006-10-06T14:43:17			
[s] Observation end time (MET)	276584112.184000	276585207.00497			
Observation end date	2006-10-07T04:54:07	2006-10-07T05:13:27			
Read mode	TIMED	TIMED			

2.3 Aspect





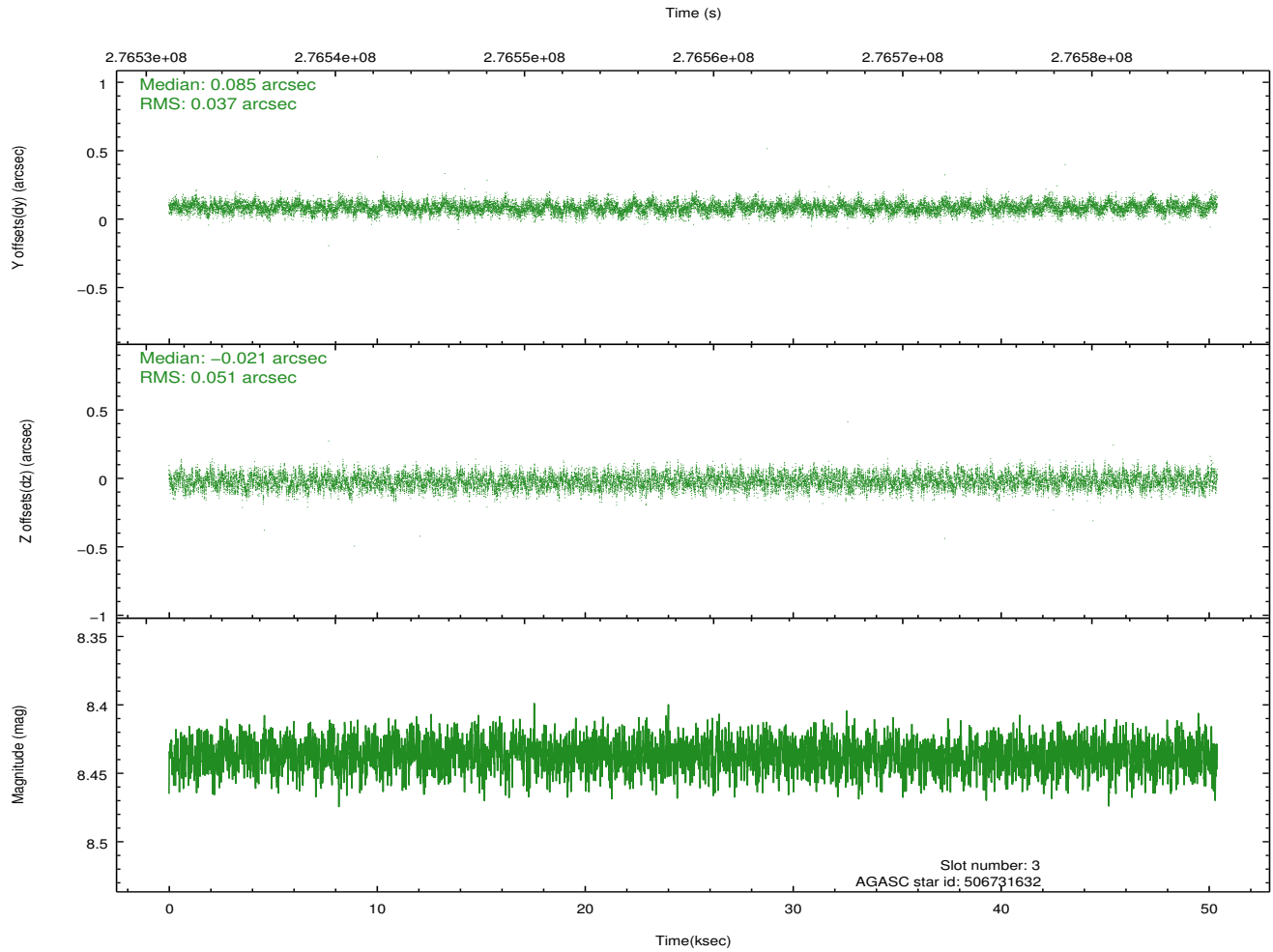
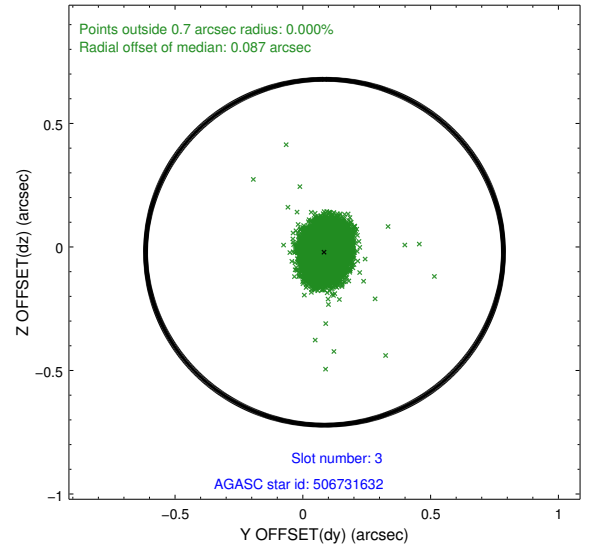
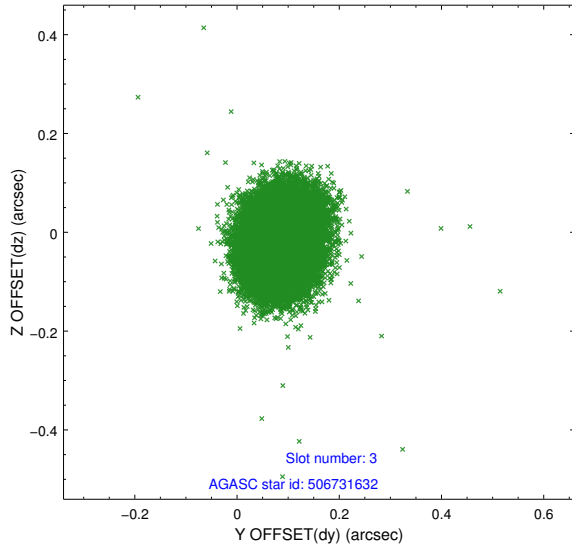
Slot Statistics

slot	status	id	mag	n_pts	med_dy	med_dz	dr1	dr2	ra	dec	mean_y	mean_z
0	FID	ACIS-I-1	7.24	12293	0.041	0.003	0.024	0.064	0.000000	0.000000	930.56	-836.37
1	FID	ACIS-I-5	7.23	12293	-0.203	0.051	0.015	0.024	0.000000	0.000000	-1817.80	1061.20
2	FID	ACIS-I-6	7.24	12291	0.069	0.019	0.014	0.049	0.000000	0.000000	396.16	1705.64
3	GUIDE	506731632	8.44	24570	0.085	-0.021	0.067	0.108	222.088013	58.057364	-1080.53	-1076.94
4	GUIDE	506861776	8.70	24573	0.050	-0.076	0.080	0.134	222.438135	58.830368	-2036.70	1618.98
5	GUIDE	506864456	7.95	24580	-0.028	-0.057	0.059	0.096	222.497108	57.914314	-145.38	-1085.59
6	GUIDE	506866824	8.53	24509	0.035	-0.059	0.062	0.100	223.367760	58.198161	676.08	680.52
7	GUIDE	506470824	7.44	24583	-0.142	0.214	0.095	0.145	222.702112	57.410951	1175.50	-2386.94

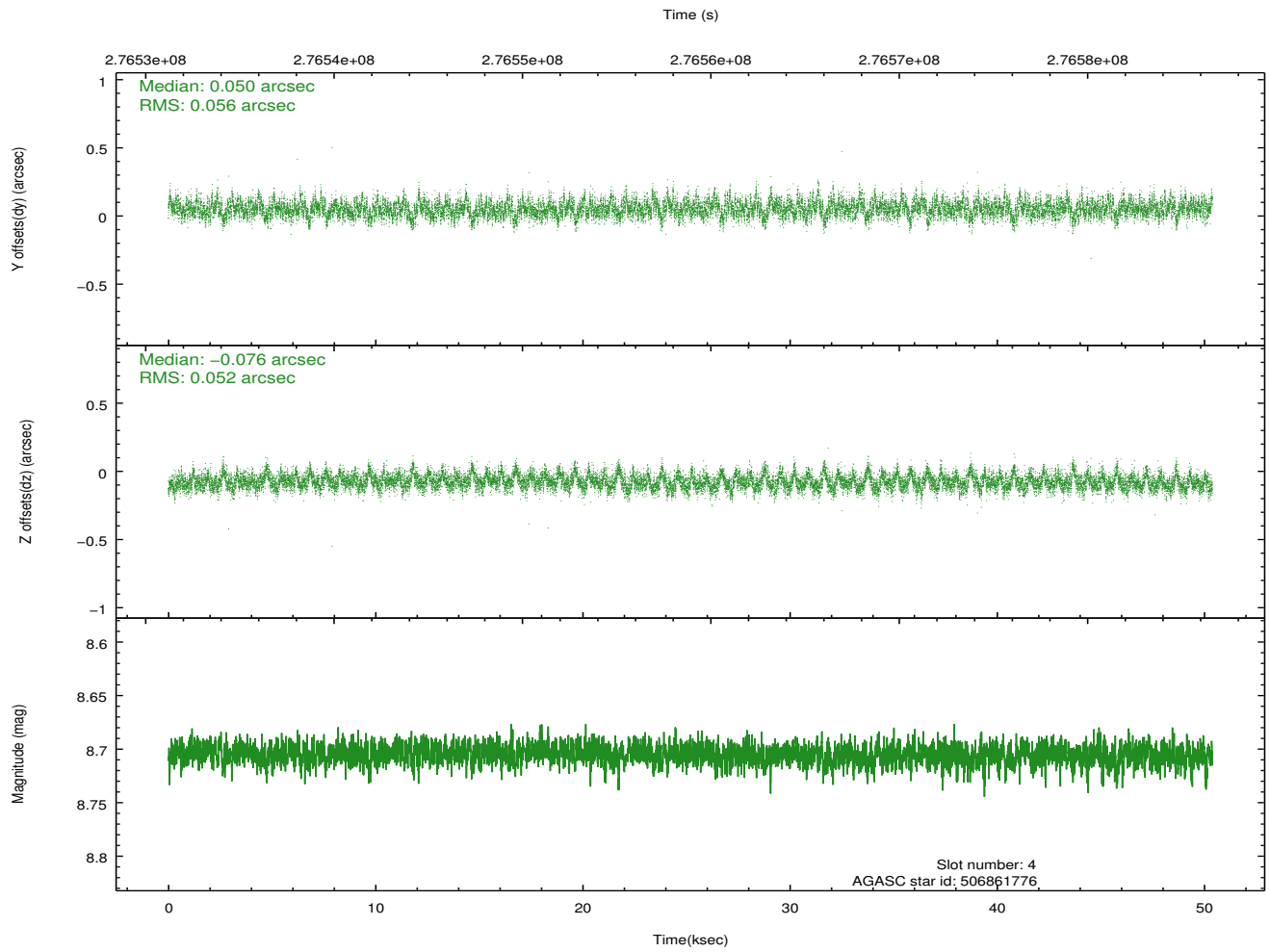
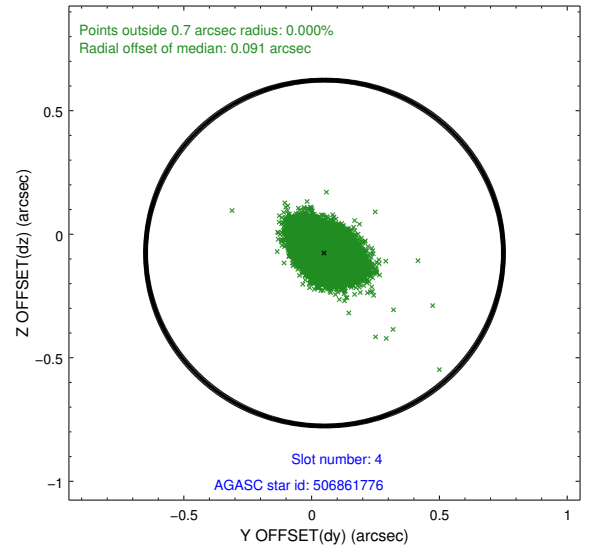
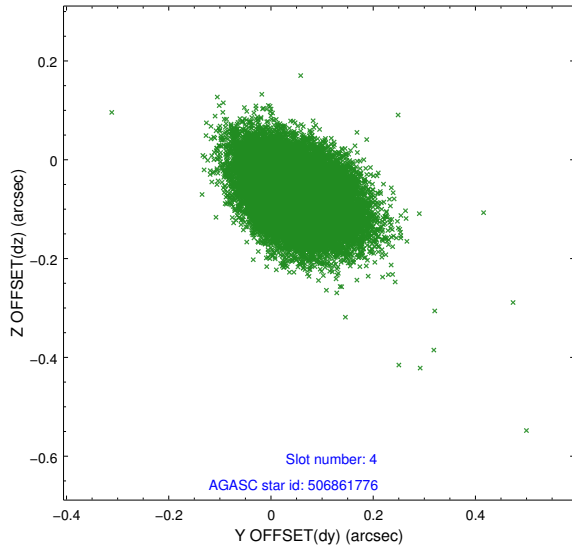
∞

2.4 Star Slots

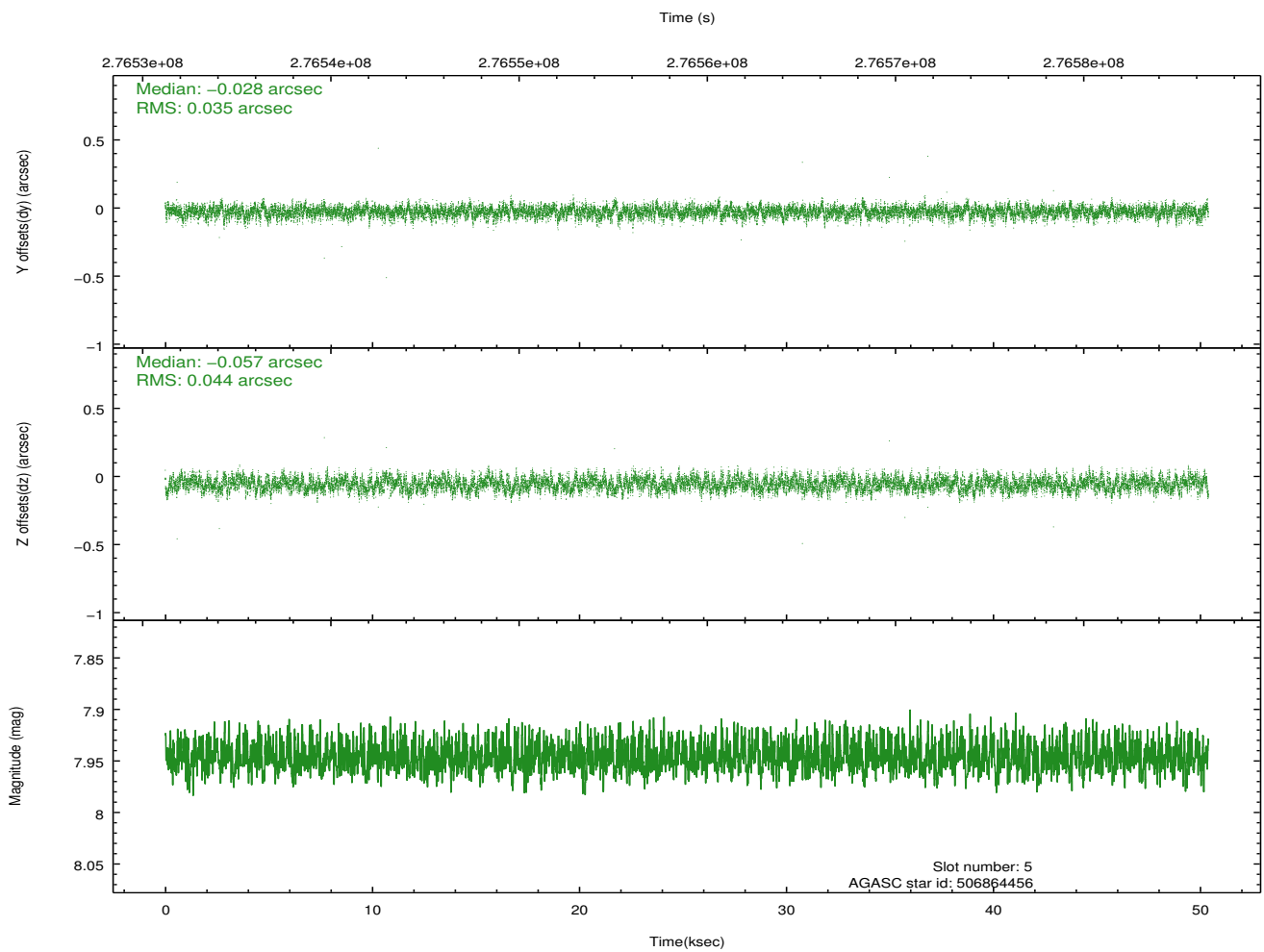
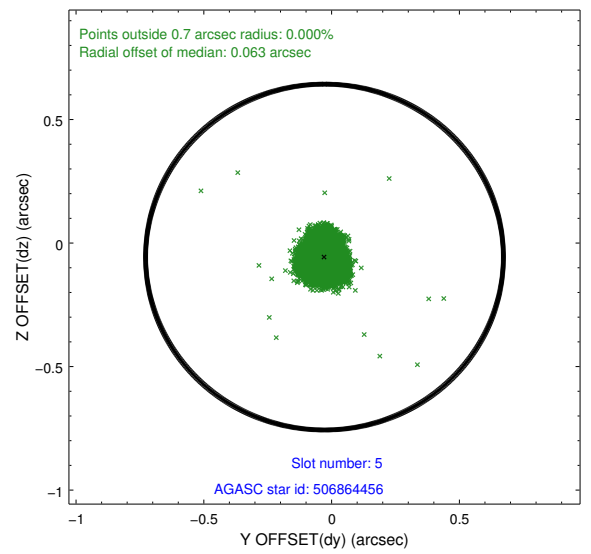
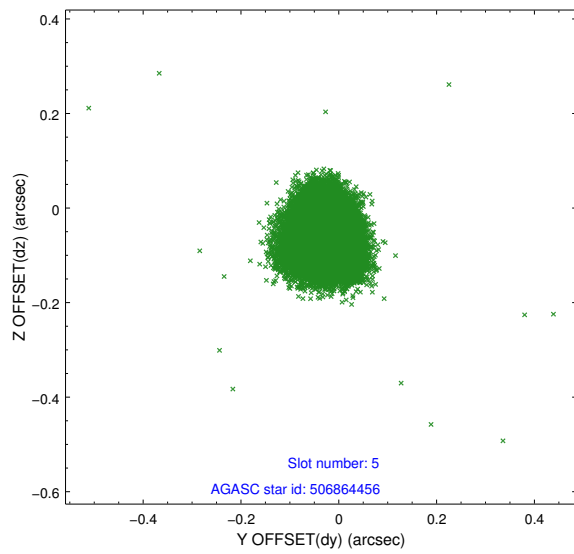
2.4.1 Slot 3



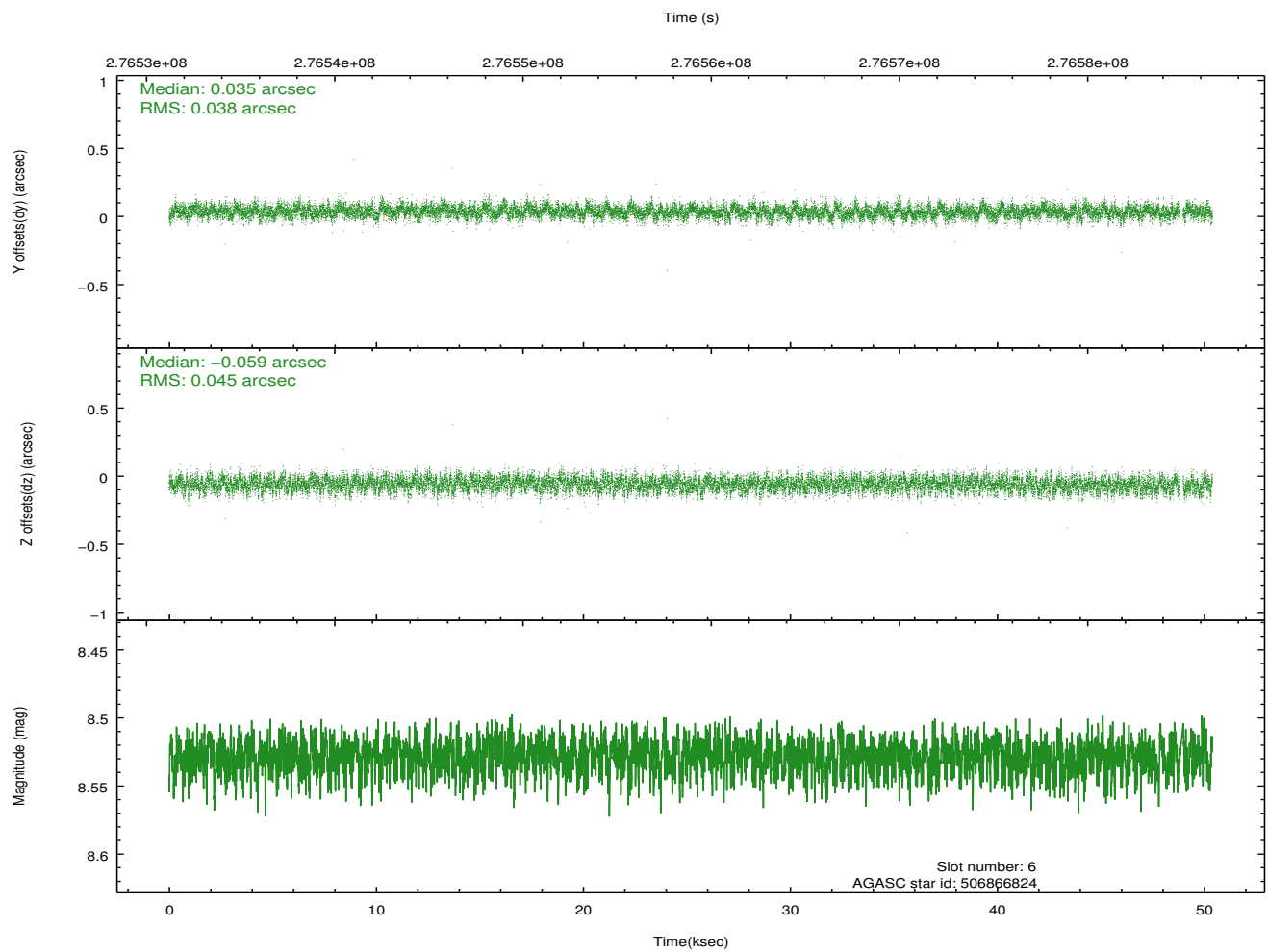
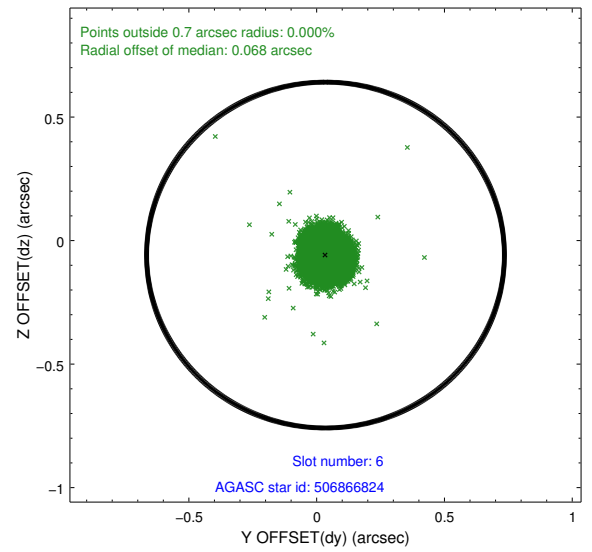
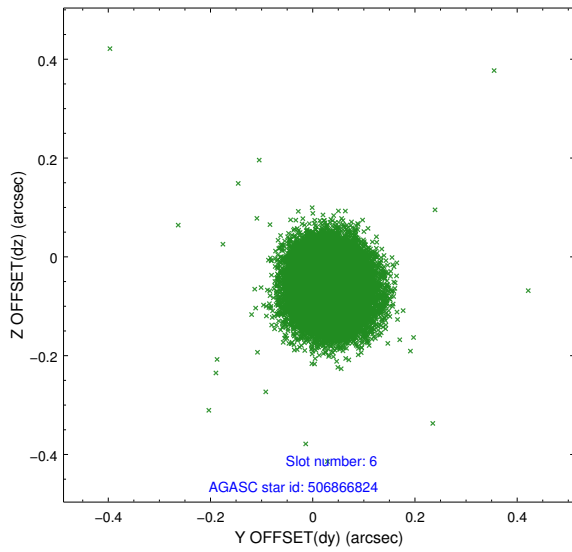
2.4.2 Slot 4



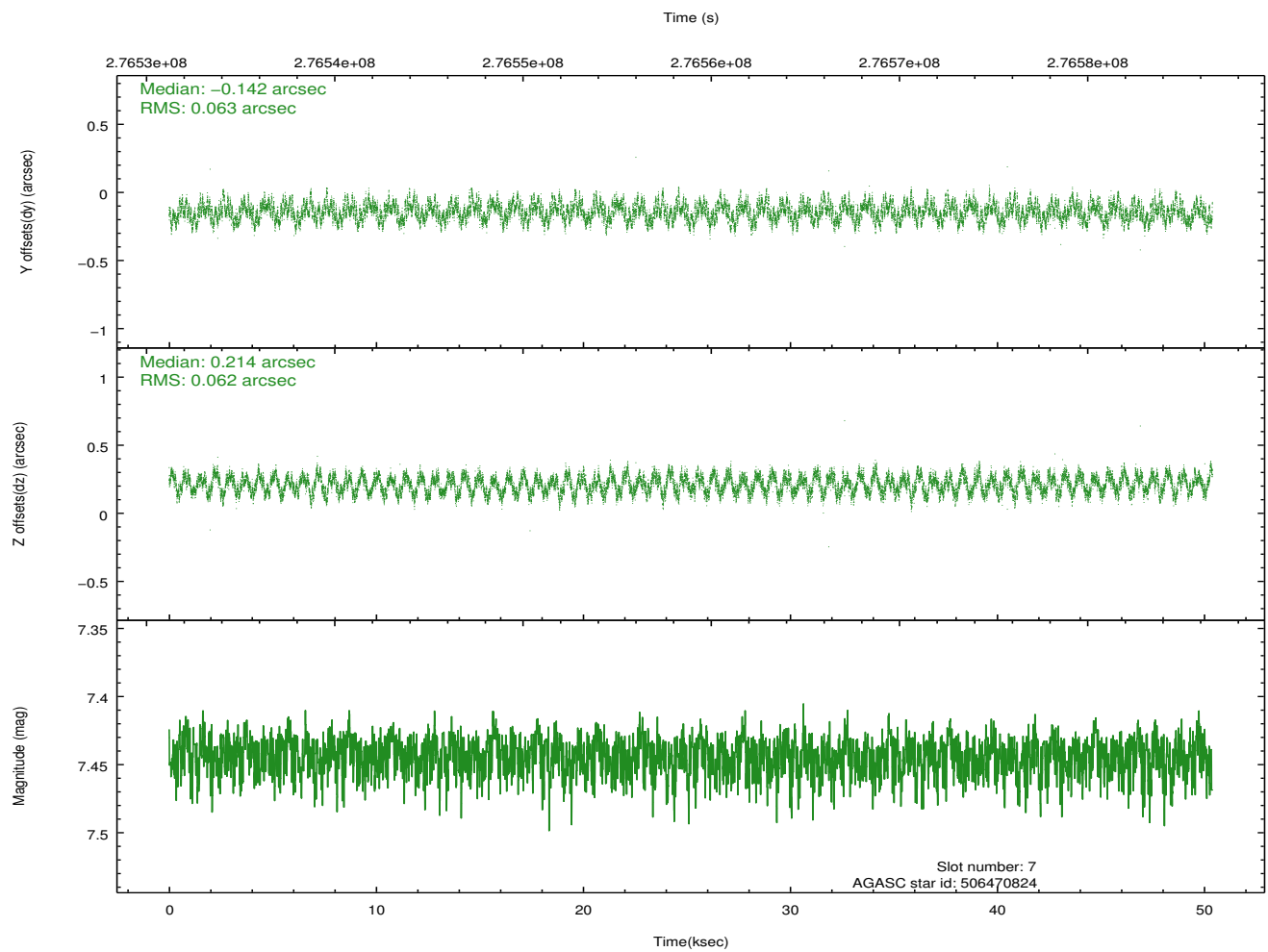
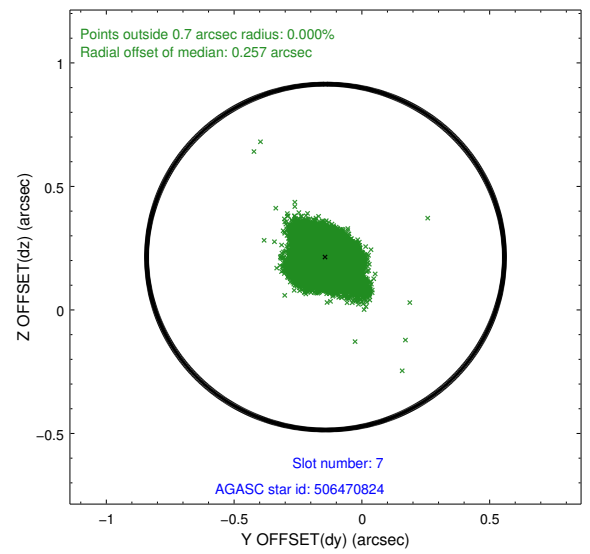
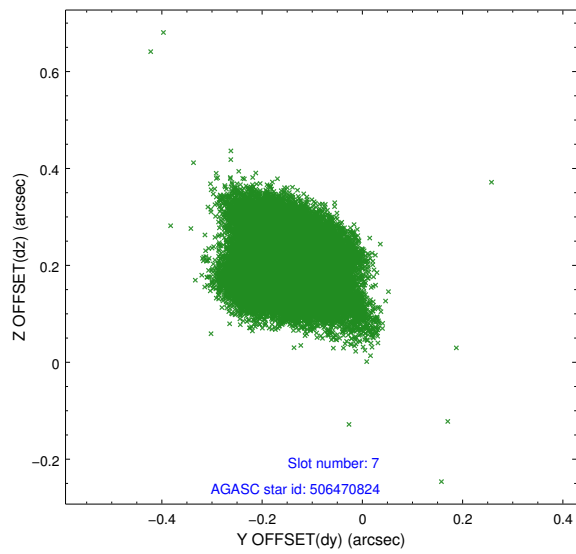
2.4.3 Slot 5



2.4.4 Slot 6

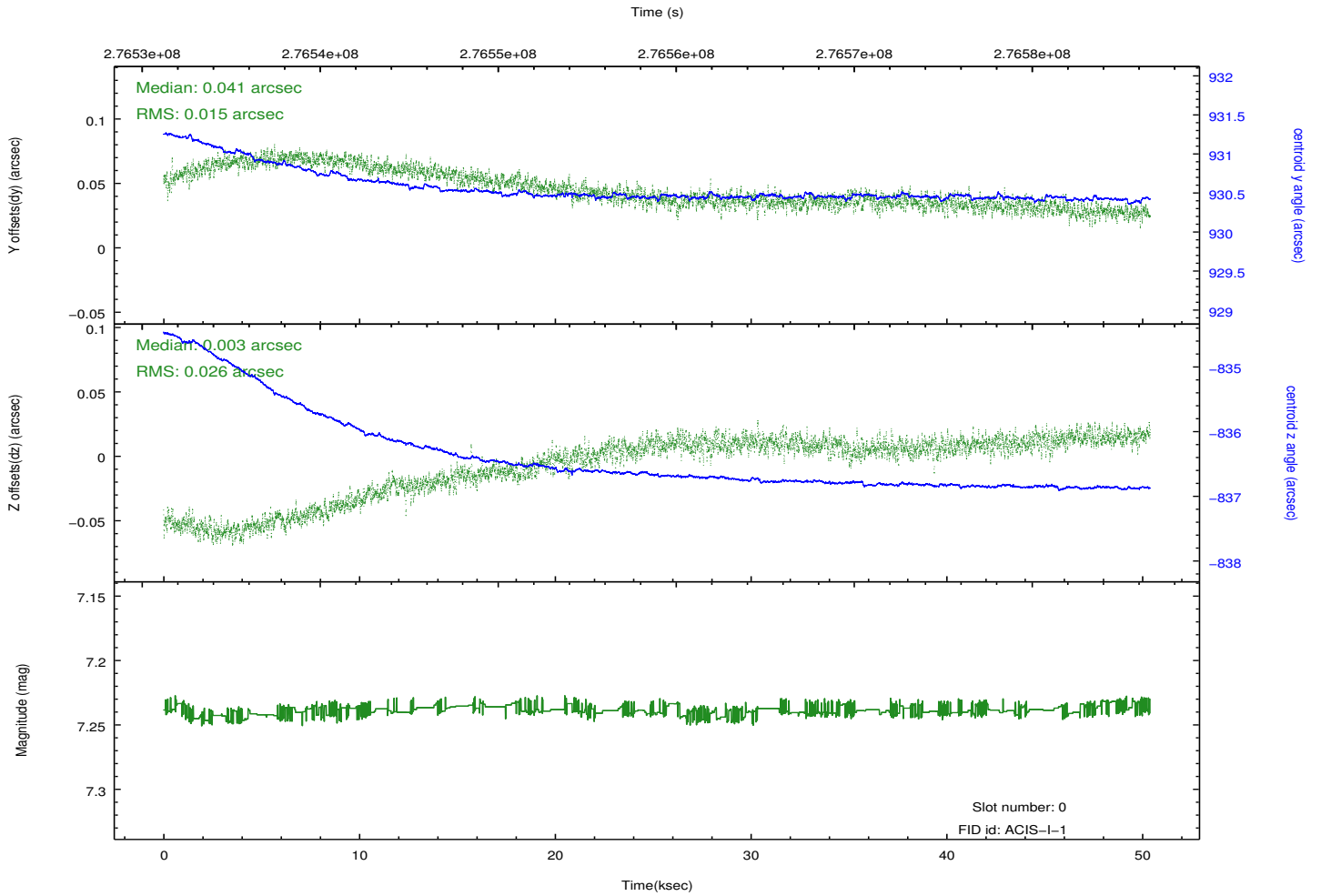
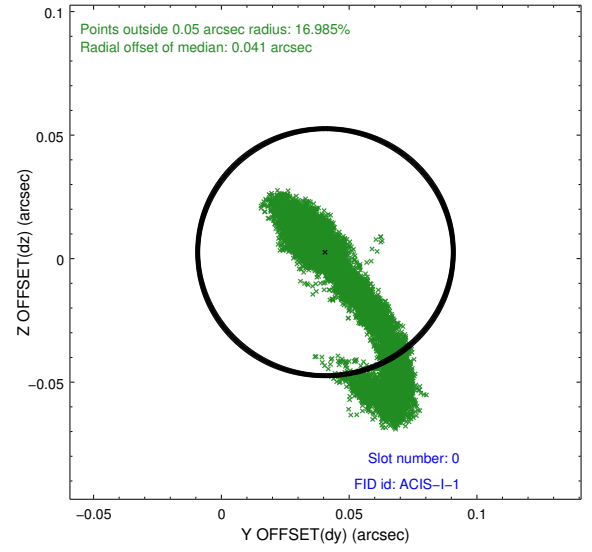
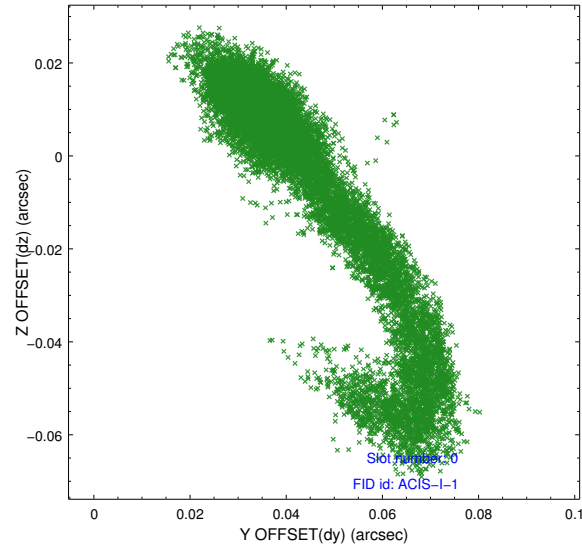


2.4.5 Slot 7

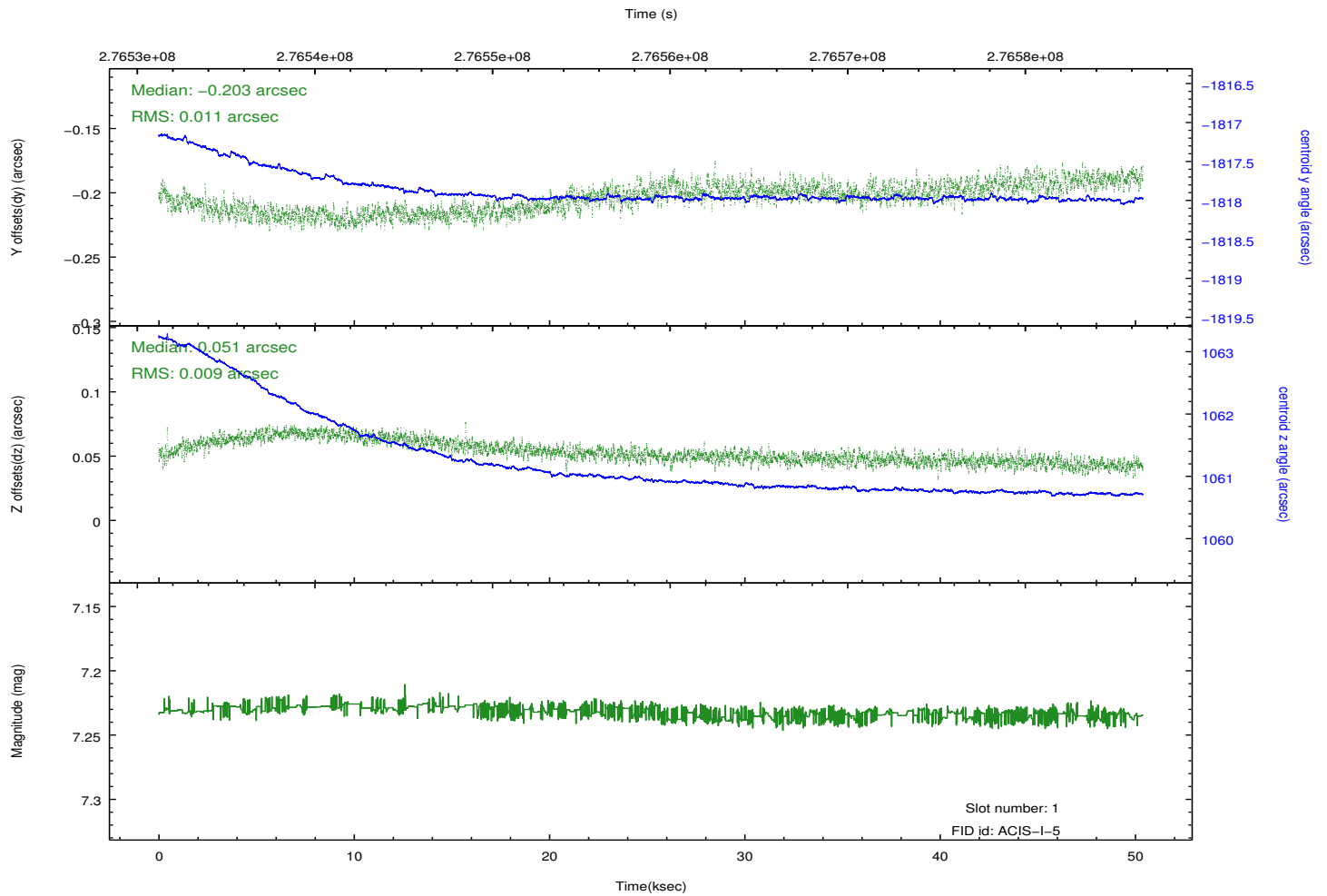
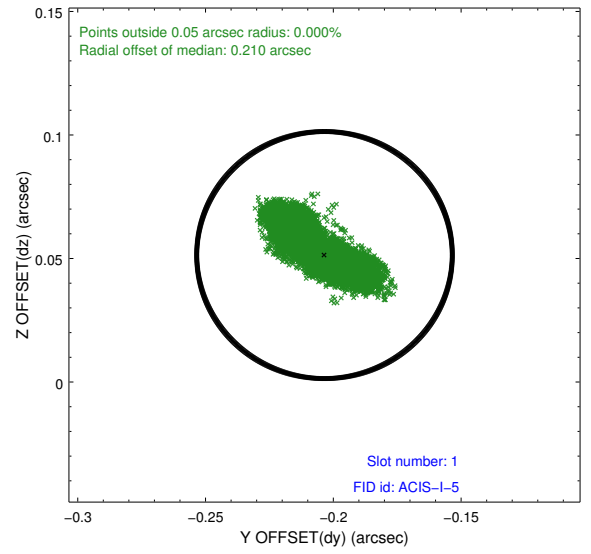
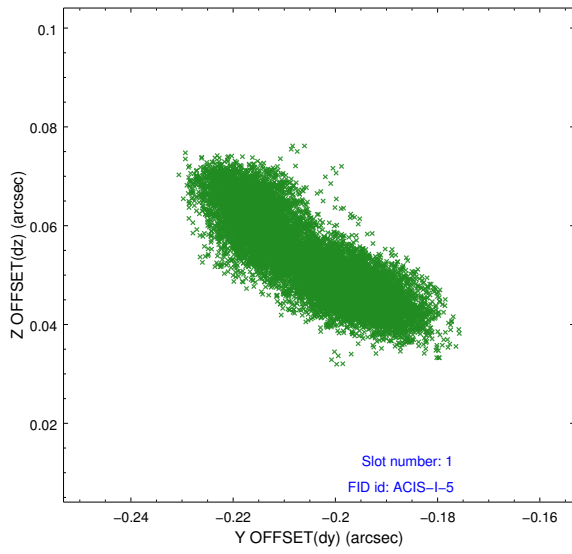


2.5 FID Slots

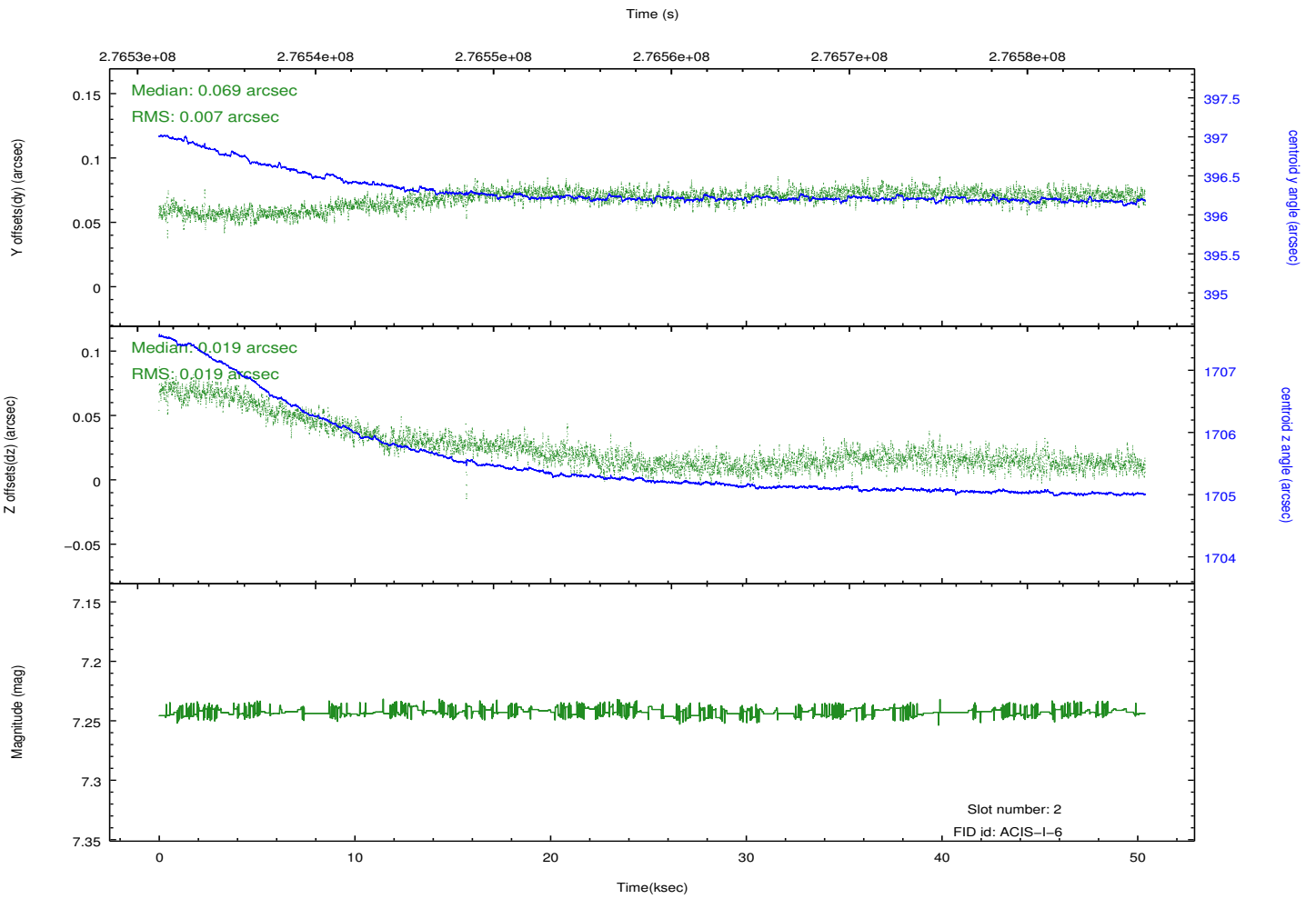
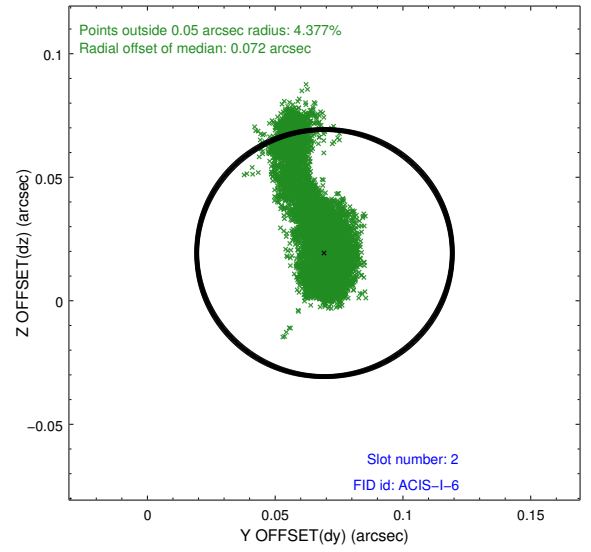
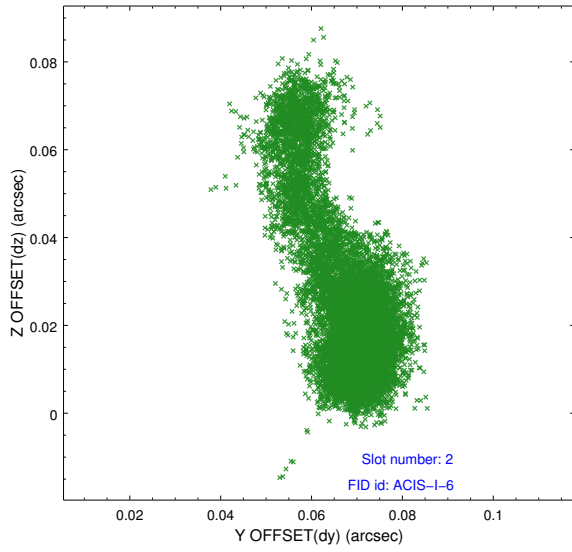
2.5.1 Slot 0



2.5.2 Slot 1



2.5.3 Slot 2



A Summary

A.1 Status

V&V Scientist	Jen Lauer
V&V Date (YYYY-MM-DD)	2012.04.11
V&V Edition	1
V&V Disposition and Status	OK
V&V Charge Time	50.0447998

A.2 Comments