

V&V Reference Report

L2 ASCDS Version : 8.4.3.1

Observation 7062 - L2 Version 2
Chandra X-Ray Center

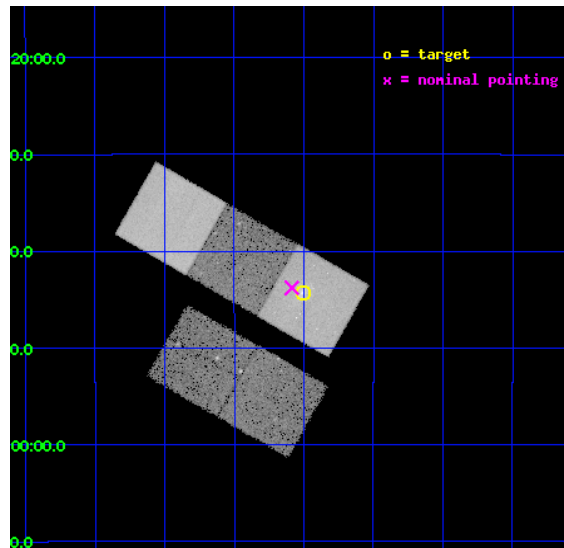
L2 Processing Date : Apr 10 2012

Contents

1	Front	2
2	OBI	3
2.1	OBI	3
2.1.1	Images	3
2.1.2	Bias	3
2.1.3	Parameters	4
2.1.4	Events	4
2.2	Compared Parameters	5
2.3	Aspect	6
2.4	Star Slots	9
2.4.1	Slot 3	9
2.4.2	Slot 4	10
2.4.3	Slot 5	11
2.4.4	Slot 6	12
2.4.5	Slot 7	13
2.5	FID Slots	14
2.5.1	Slot 0	14
2.5.2	Slot 1	15
2.5.3	Slot 2	16
A	Summary	17
A.1	Status	17
A.2	Comments	17

1 Front

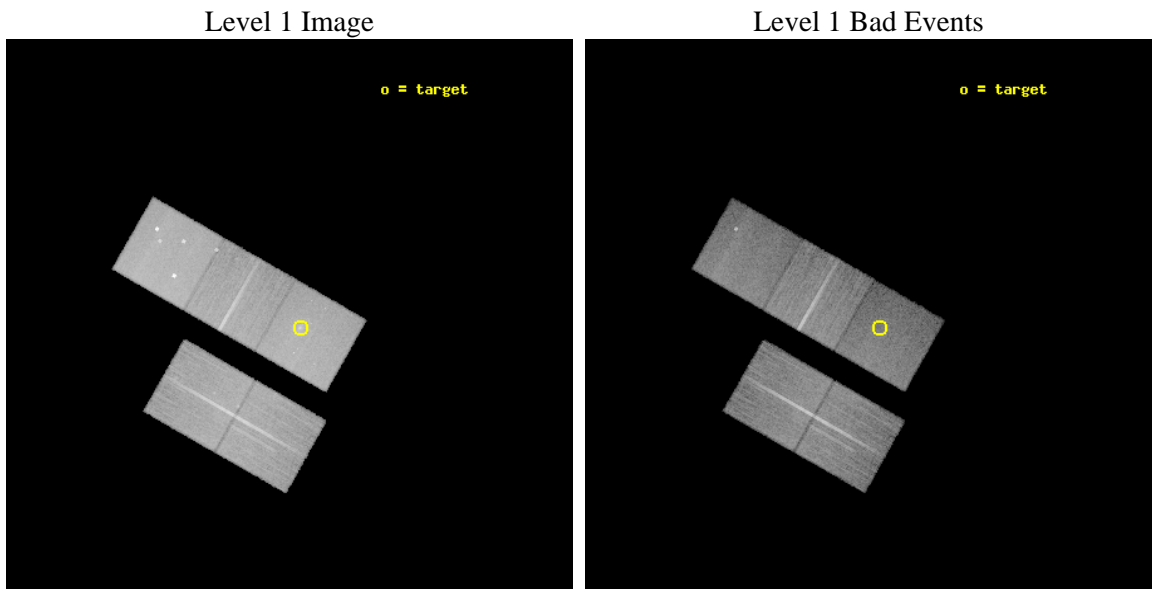
seq_num	600500	Sequence number
obs_id	7062	Observation id
title	Resolving the Dark Matter in a Normal Elliptical Galaxy	Proposal t
observer	Dr Philip Humphrey	Principal investigator
object	NGC 720	Source name
dtcycle	0	
cycle	P	events from which exps? Prim/Second/Both
ra_targ	28.252083	Observer's specified target RA [deg]
dec_targ	-13.738611	Observer's specified target Dec [deg]
ra_nom	28.271491839143	Nominal RA [deg]
dec_nom	-13.72986994489	Nominal Dec [deg]
roll_nom	29.661225000681	Nominal Roll [deg]
revision	2	Processing version of data
ontime	23160.100178123	Sum of GTIs [s]
livetime	22857.496419078	Livetime [s]
ontime2	23153.818197429	Sum of GTIs [s]
ontime3	23160.100178123	Sum of GTIs [s]
ontime5	23160.100178123	Sum of GTIs [s]
ontime6	23160.100178123	Sum of GTIs [s]
ontime7	23160.100178123	Sum of GTIs [s]
l2events	250344	Number of level 2 events



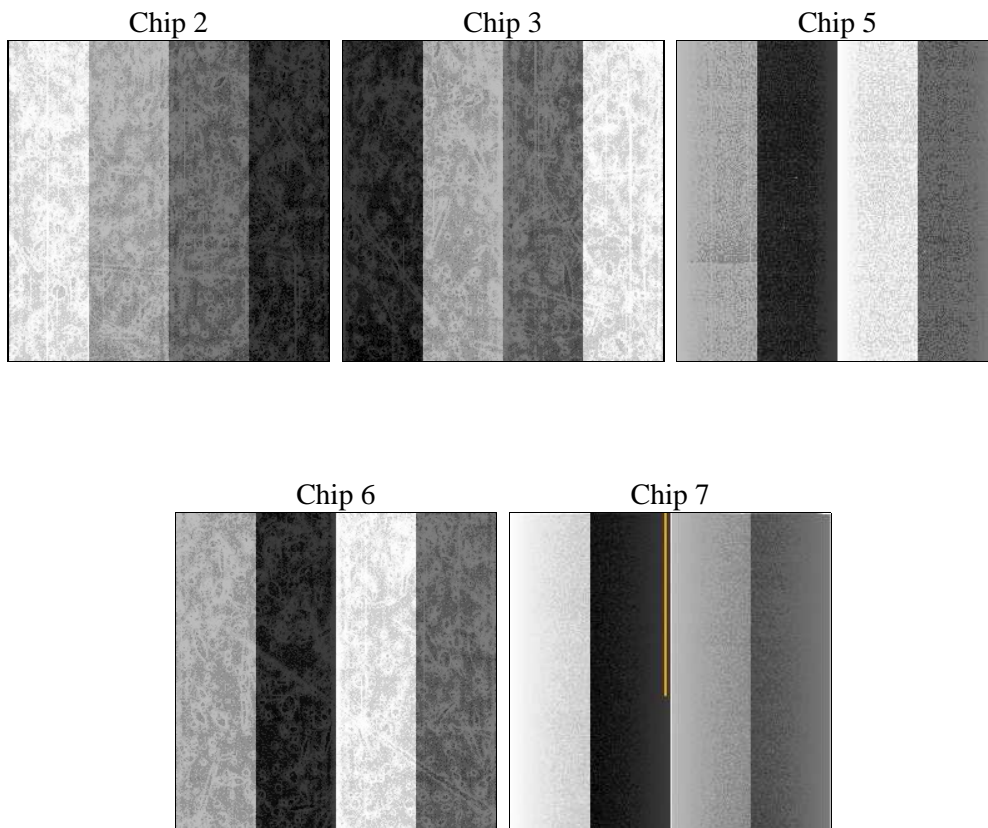
2 OBI

2.1 OBI

2.1.1 Images



2.1.2 Bias



2.1.3 Parameters

obi_num	0	Obi number	sched_exp_time	23000.000000	[s] Scheduled observation exposure time
ascdsver	8.4.3.1	Processing system revision	ontime	23160.100178123	Sum of GTIs [s]
caldbver	4.4.9	 	ontime2	23153.818197429	Sum of GTIs [s]
date	2012-04-11T01:32:35	Date and time of file creation	ontime3	23160.100178123	Sum of GTIs [s]
revision	2	Processing version of data	ontime5	23160.100178123	Sum of GTIs [s]
			ontime6	23160.100178123	Sum of GTIs [s]
			ontime7	23160.100178123	Sum of GTIs [s]
			l1events	1024747	Number of level 1 events

2.1.4 Events

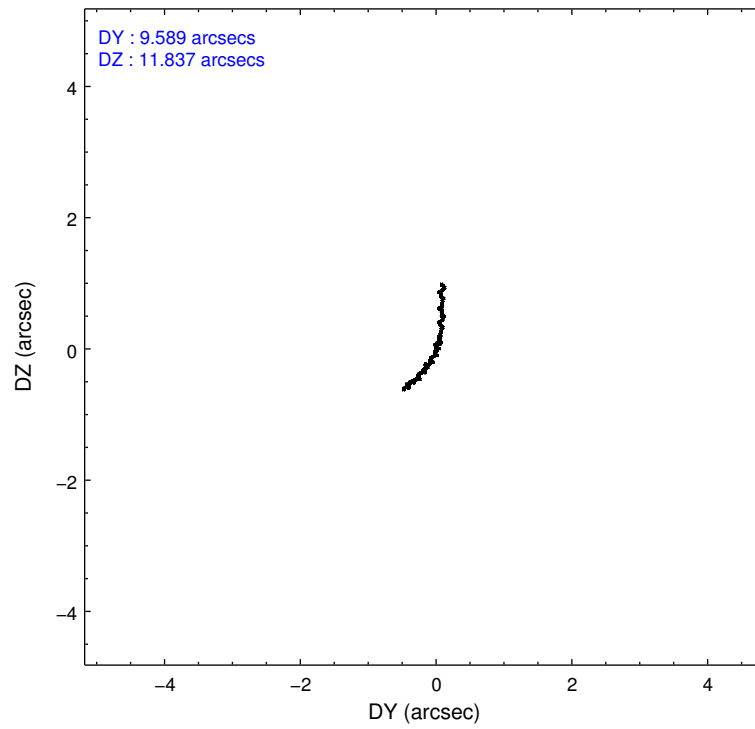
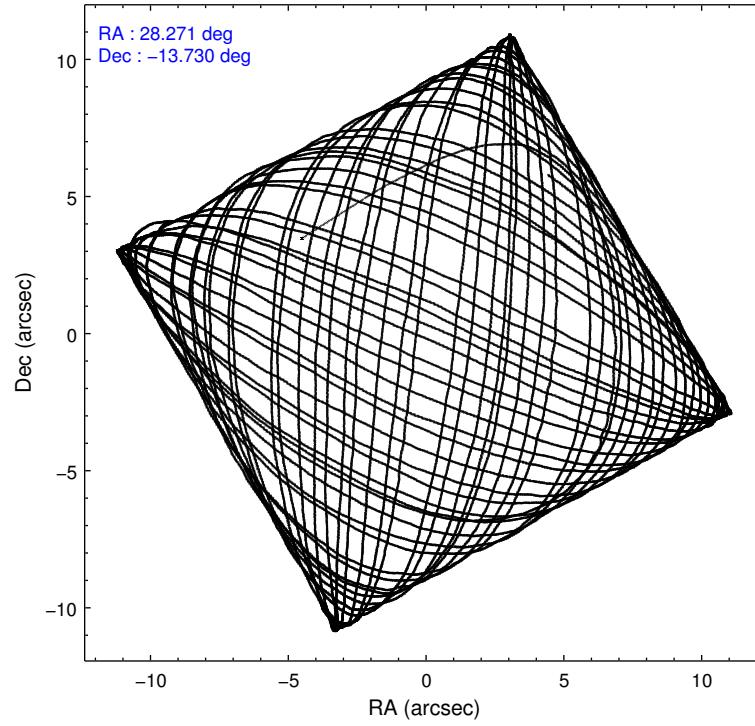
	ccd 2	ccd 3	ccd 5	ccd 6	ccd 7
level 1 events	189392	179140	257481	186959	211775
rejected events	172152	162788	131371	168156	115237
rejected %	90%	90%	51%	89%	54%

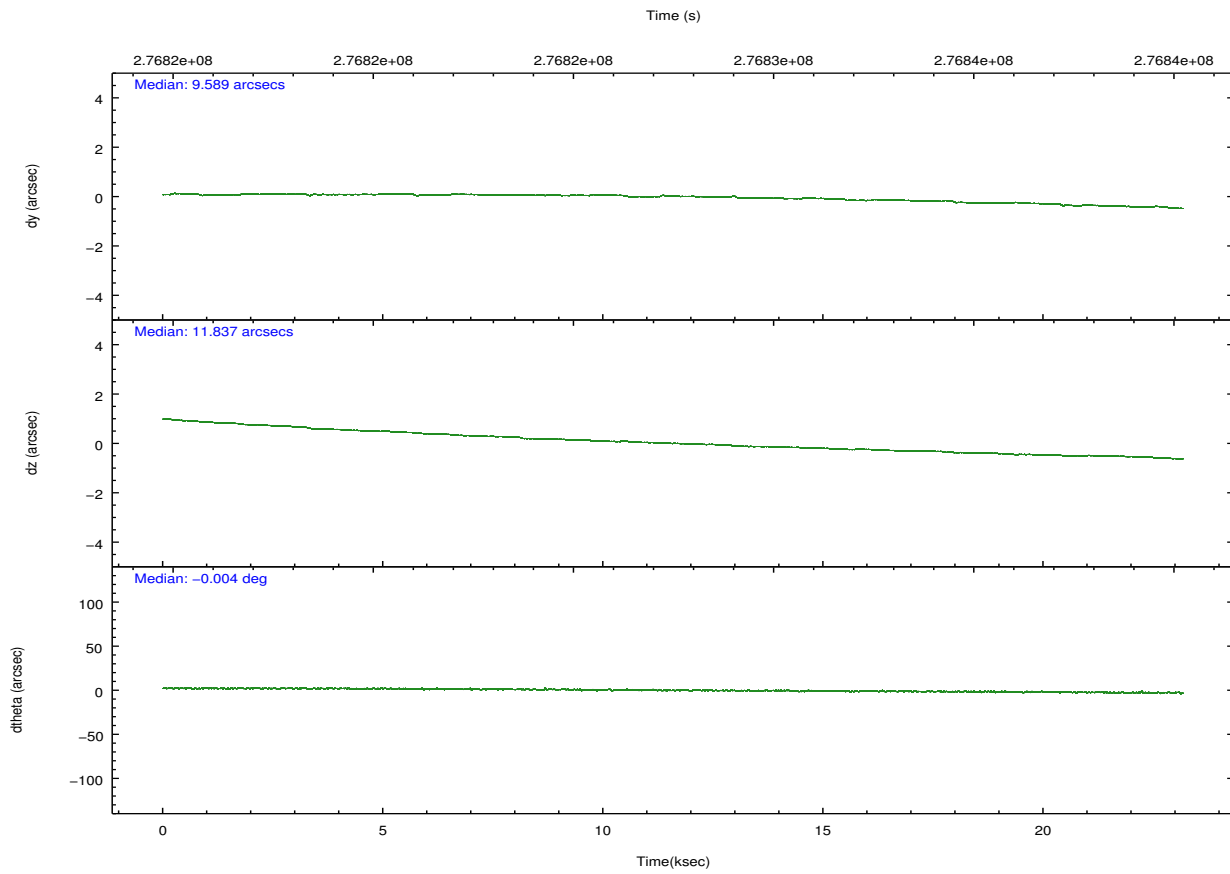
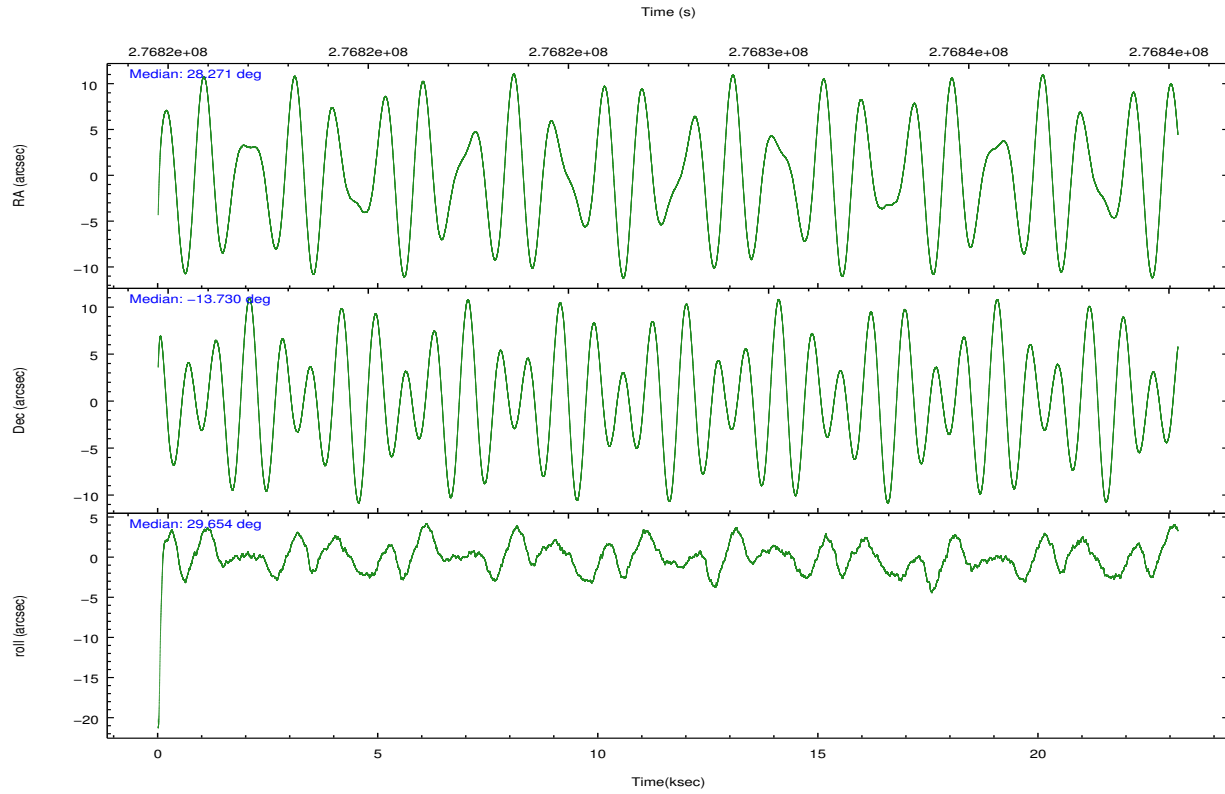
	ccd 2	ccd 3	ccd 5	ccd 6	ccd 7
grade 0 events	6630	6153	17361	6938	11373
	3%	3%	6%	3%	5%
grade 1 events	92	98	492	88	263
	0%	0%	0%	0%	0%
grade 2 events	4093	3657	38213	4239	20756
	2%	2%	14%	2%	9%
grade 3 events	1921	1936	5614	2150	9586
	1%	1%	2%	1%	4%
grade 4 events	2013	1929	5238	2216	9537
	1%	1%	2%	1%	4%
grade 5 events	5746	7022	20414	7436	21737
	3%	3%	7%	3%	10%
grade 6 events	3220	3306	64576	4003	48852
	1%	1%	25%	2%	23%
grade 7 events	165677	155039	105573	159889	89671
	87%	86%	41%	85%	42%

2.2 Compared Parameters

Parameter	Planned	Actual	Parameter	Planned	Actual
Instrument	ACIS	ACIS	Obspar format version number	7	7
Detector	ACIS-23567	ACIS-23567	Obspar file type	PREDICTED	ACTUAL
Grating	NONE	NONE	Obspar update status	NONE	UPDATED
Data mode	VFAINT	VFAINT	Number of optional ACIS chips dropped	0	0
Observation mode	POINTING	POINTING	On-chip summing requested	N	N
[deg] Pointing RA	28.257641	28.27149183914273	Subarray requested	NONE	NONE
[deg] Pointing Dec	-13.753562	-13.72986994489001	Alternating exposures requested	N	N
[deg] Pointing Roll	29.501318	29.66122500068138	[s] Primary exposure time	0.000000	3.1
[mm] SIM focus pos	-0.684267	-0.6828225247311905			
[mm] SIM defocus	0	0.001444936568705701			
[mm] SIM translation stage pos	-190.132523	-190.1400660498719			
[mm] SIM translation stage offset	0	0.00754346686406393			
[s] Observation start time (MET)	276816084.184000	276814589.20328			
Observation start date	2006-10-09T21:20:19	2006-10-09T20:56:29			
[s] Observation end time (MET)	276839084.184000	276840339.767			
Observation end date	2006-10-10T03:43:39	2006-10-10T04:05:39			
Read mode	TIMED	TIMED			

2.3 Aspect



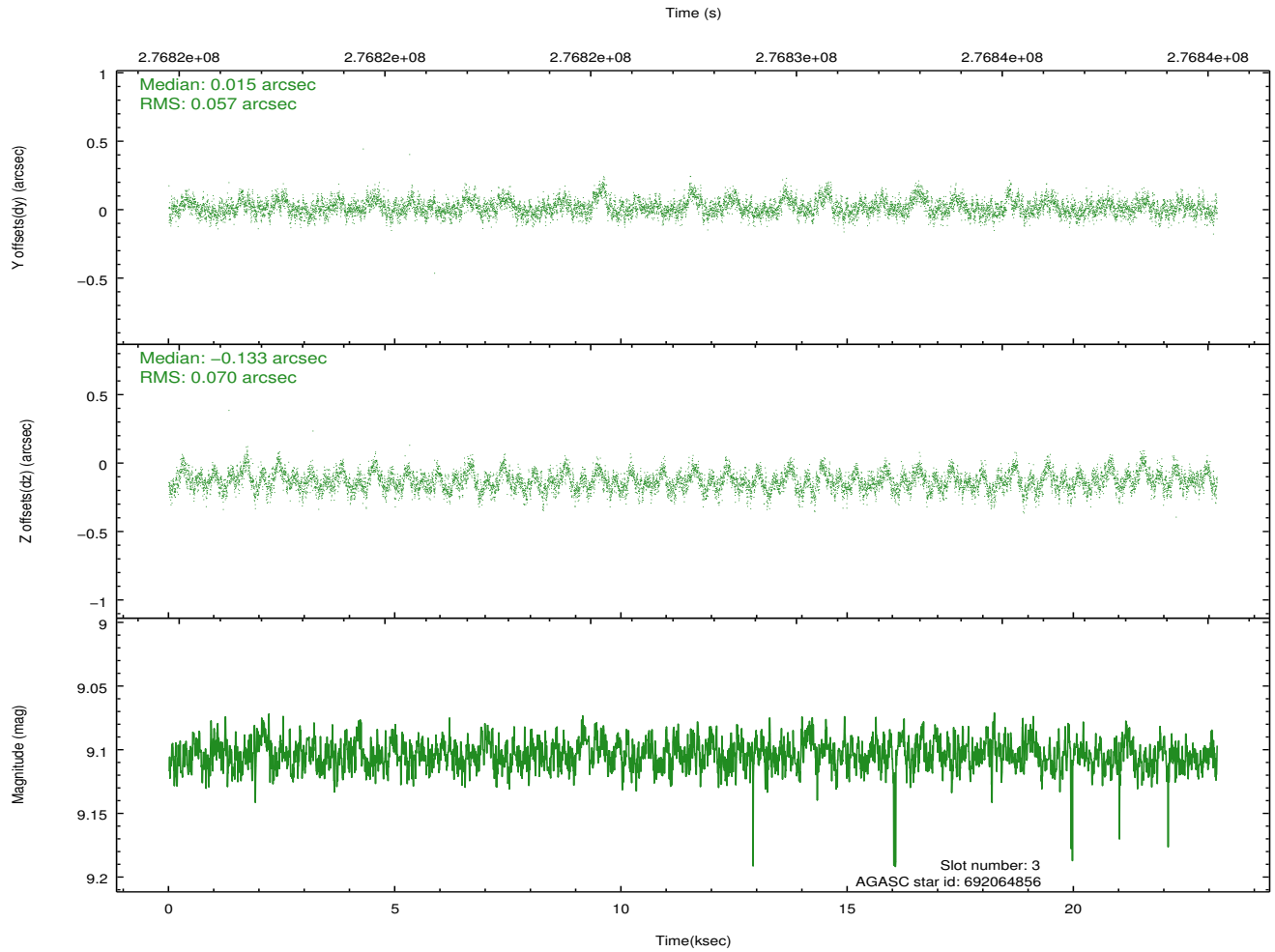
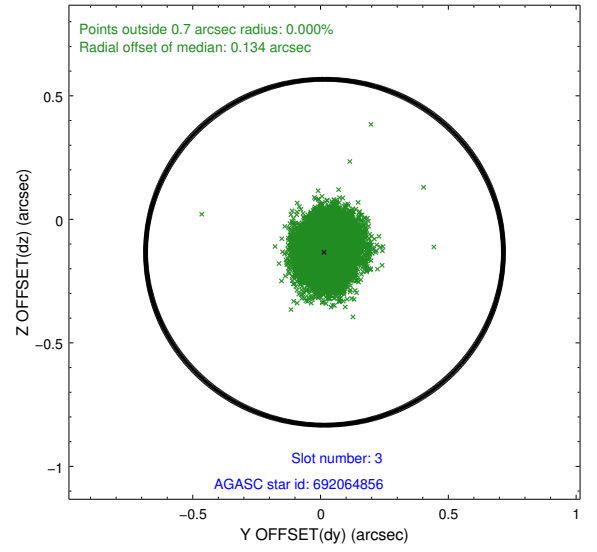
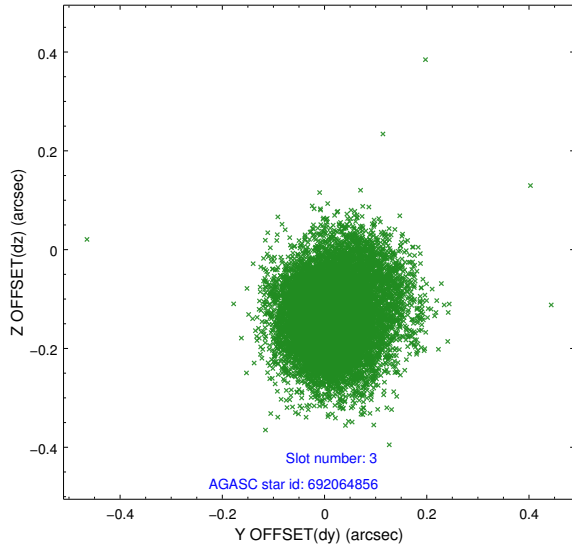


Slot Statistics

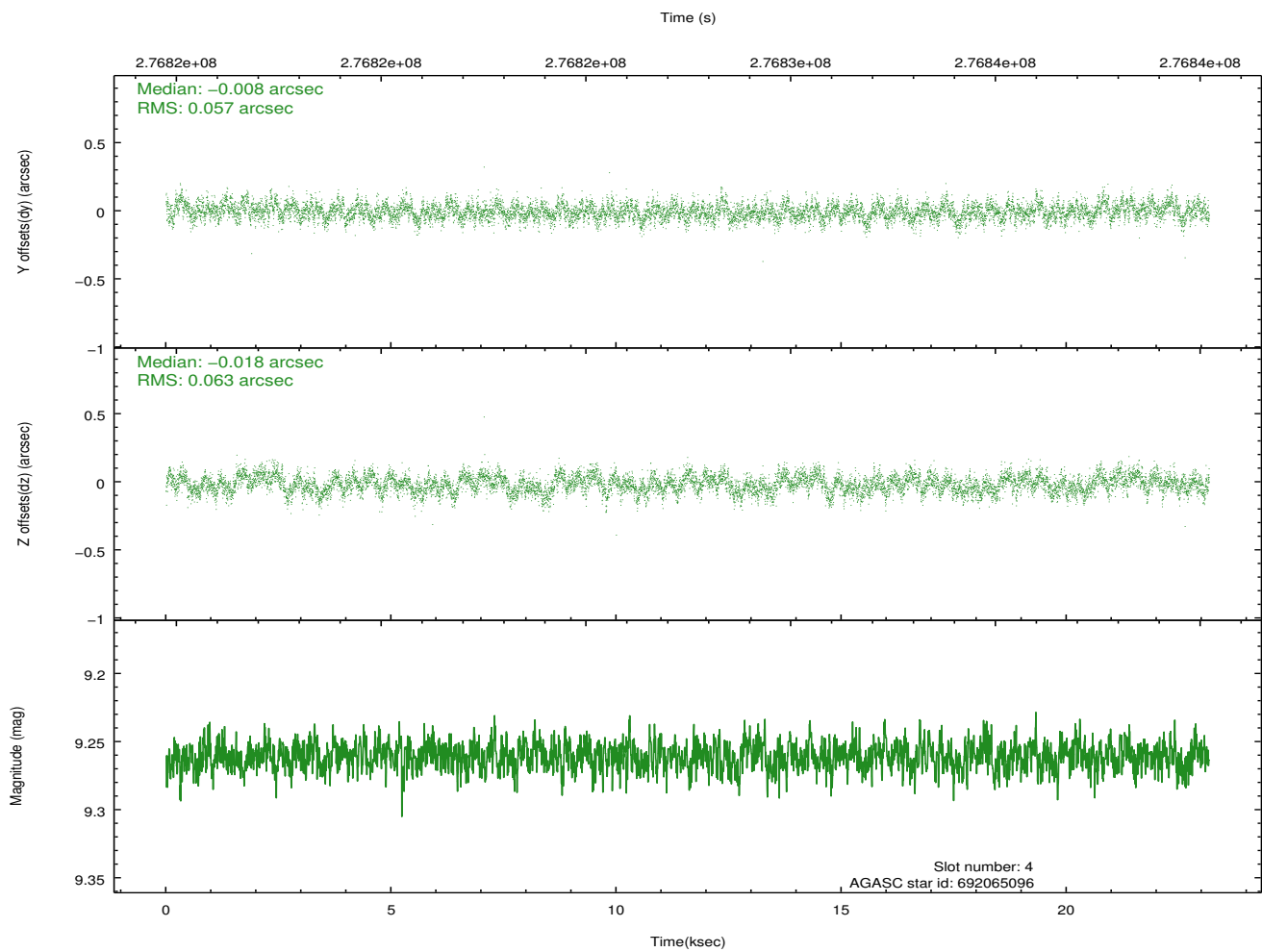
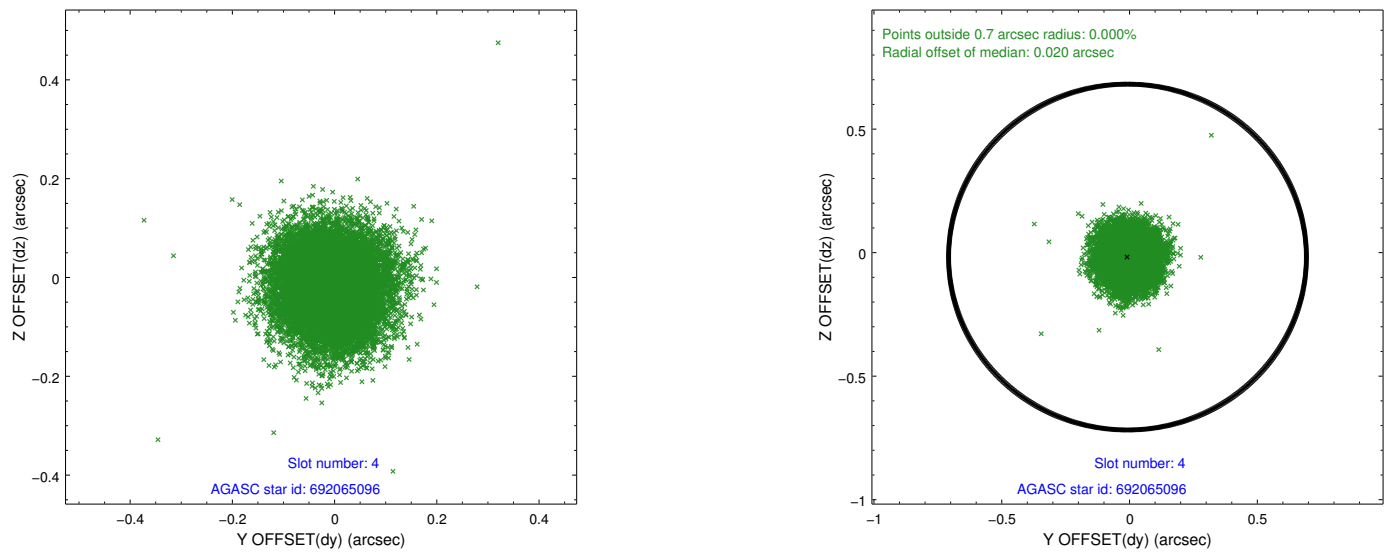
slot	status	id	mag	n_pts	med_dy	med_dz	dr1	dr2	ra	dec	mean_y	mean_z
0	FID	ACIS-S-2	7.11	5650	-0.029	-0.027	0.016	0.033	0.000000	0.000000	-762.37	-1733.22
1	FID	ACIS-S-4	7.21	5649	0.139	0.022	0.012	0.031	0.000000	0.000000	2151.01	175.17
2	FID	ACIS-S-5	7.23	5651	-0.141	0.013	0.015	0.039	0.000000	0.000000	-1815.15	169.00
3	GUIDE	692064856	9.10	11295	0.015	-0.133	0.095	0.156	27.844359	-13.441810	-707.42	1688.36
4	GUIDE	692065096	9.26	11296	-0.008	-0.018	0.091	0.144	28.419979	-13.250038	1387.61	1296.67
5	GUIDE	692065760	8.86	11293	-0.034	0.131	0.090	0.142	28.134676	-14.541960	-1770.48	-2259.20
6	GUIDE	692066072	8.19	11299	0.056	-0.124	0.076	0.125	27.518624	-13.704241	-2164.26	1423.63
7	GUIDE	692067256	8.89	11286	-0.030	0.139	0.084	0.135	28.829272	-14.105112	1113.49	-2085.81

2.4 Star Slots

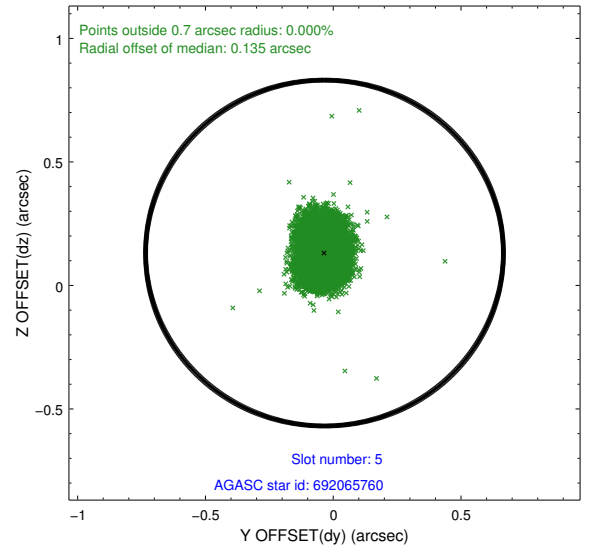
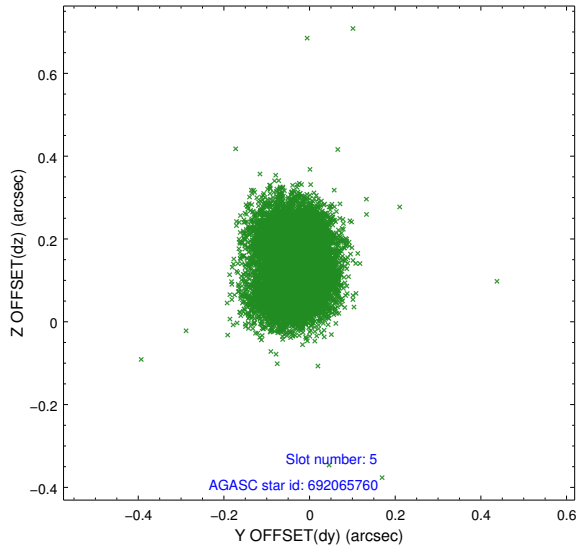
2.4.1 Slot 3



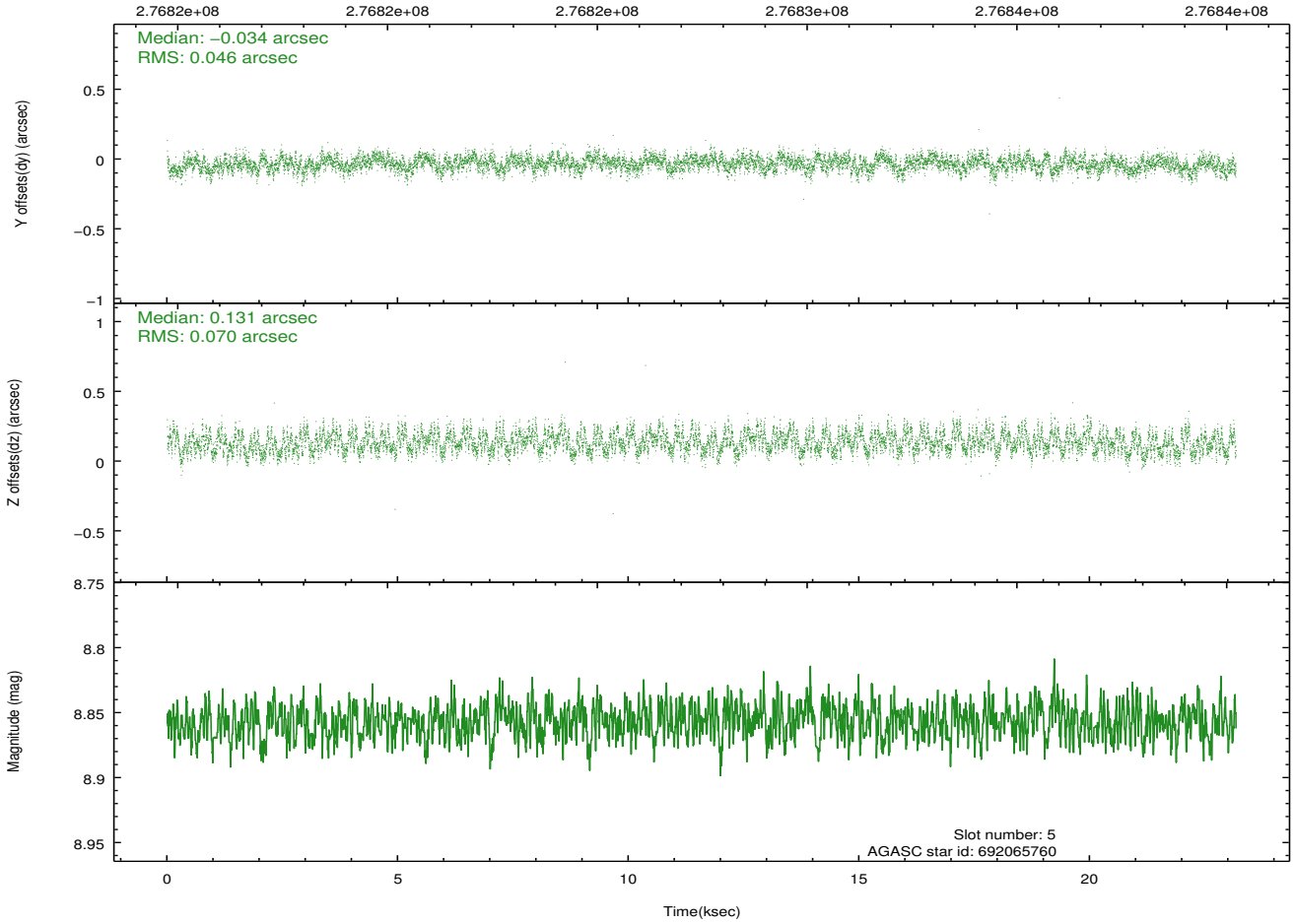
2.4.2 Slot 4



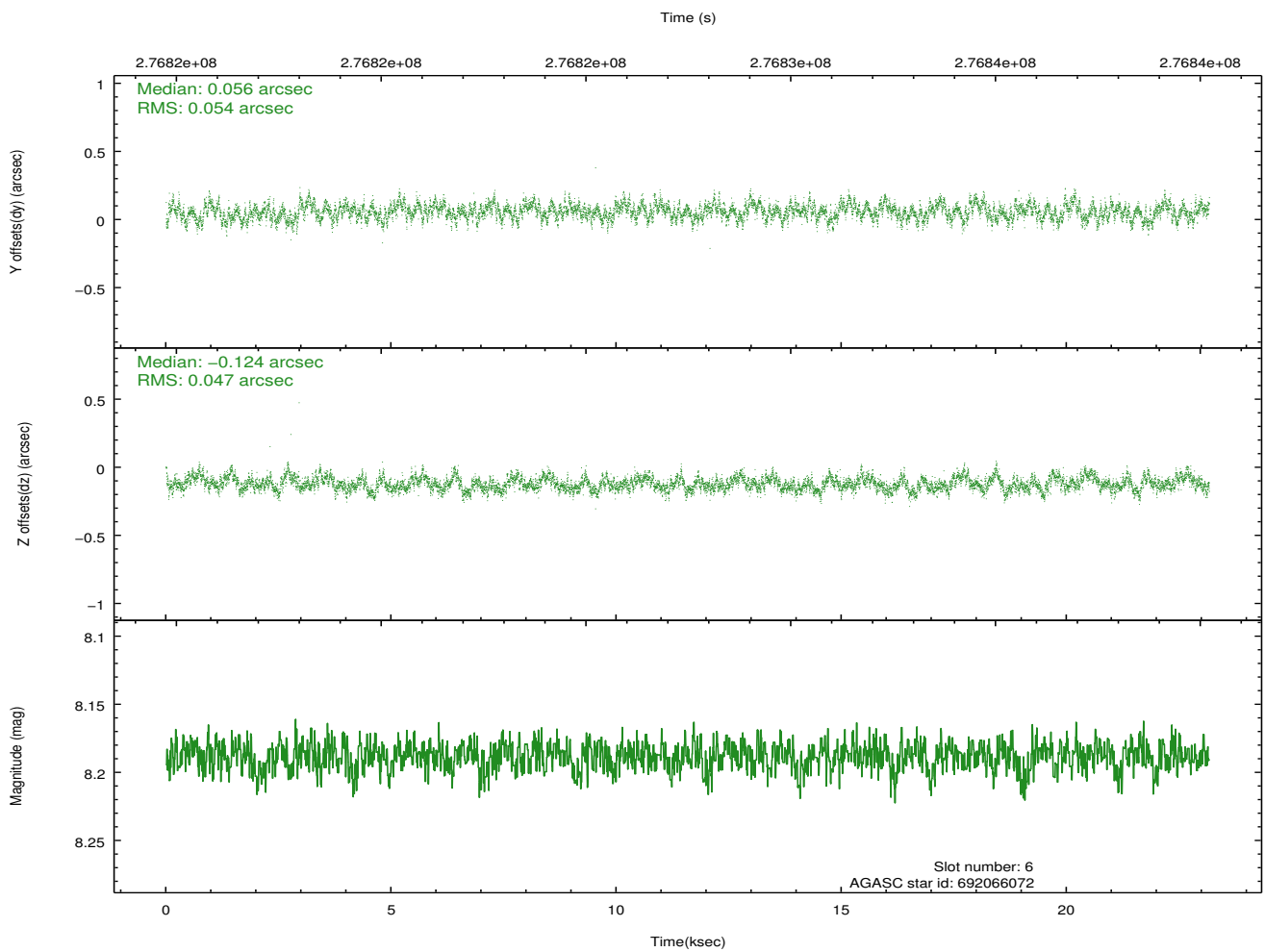
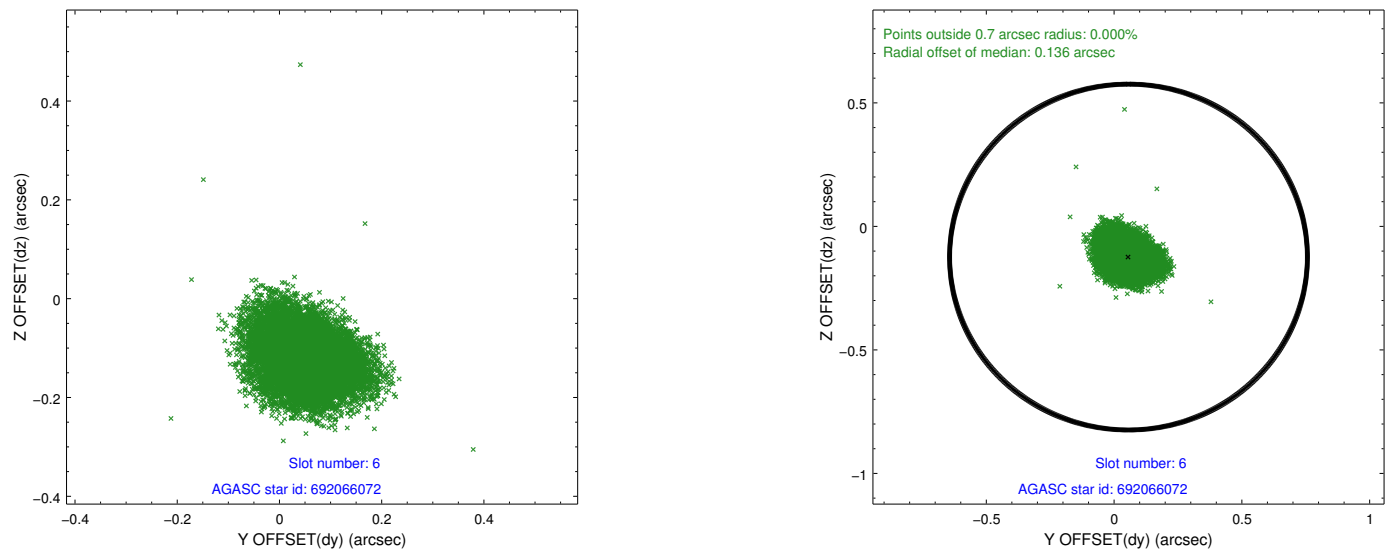
2.4.3 Slot 5



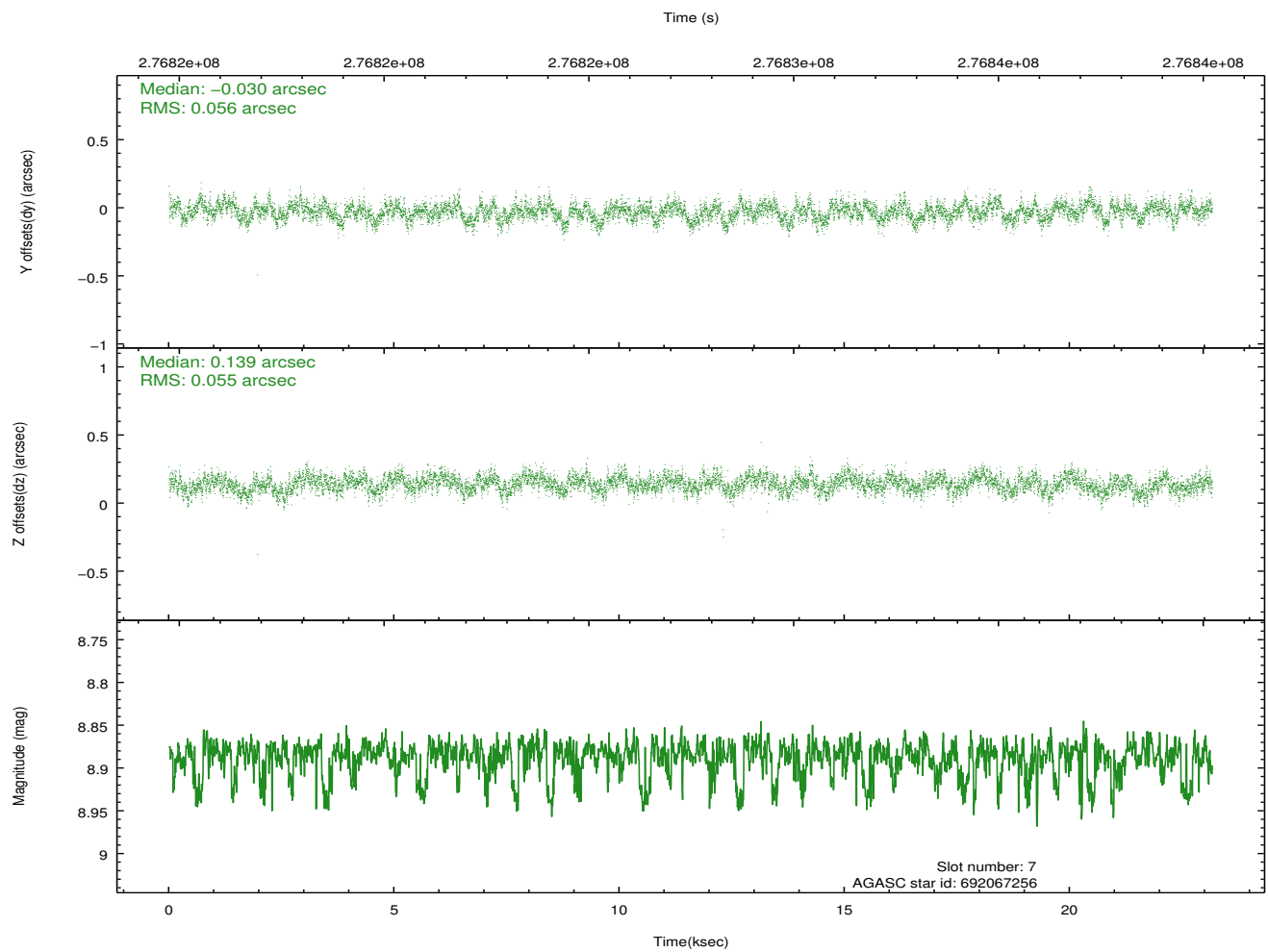
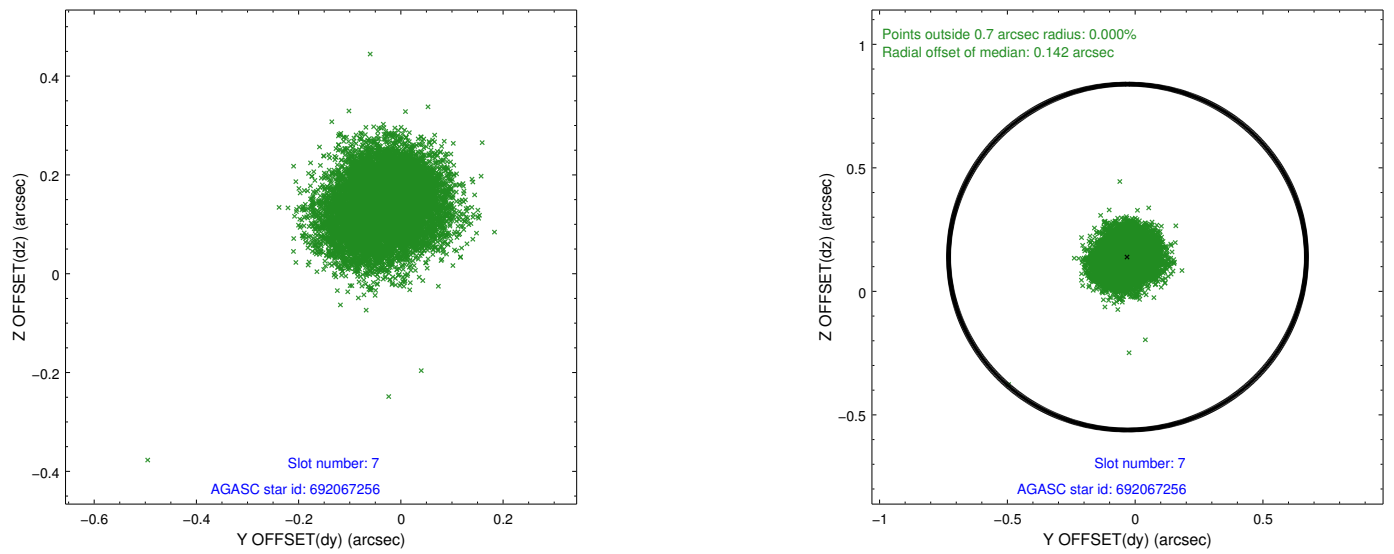
Time (s)



2.4.4 Slot 6

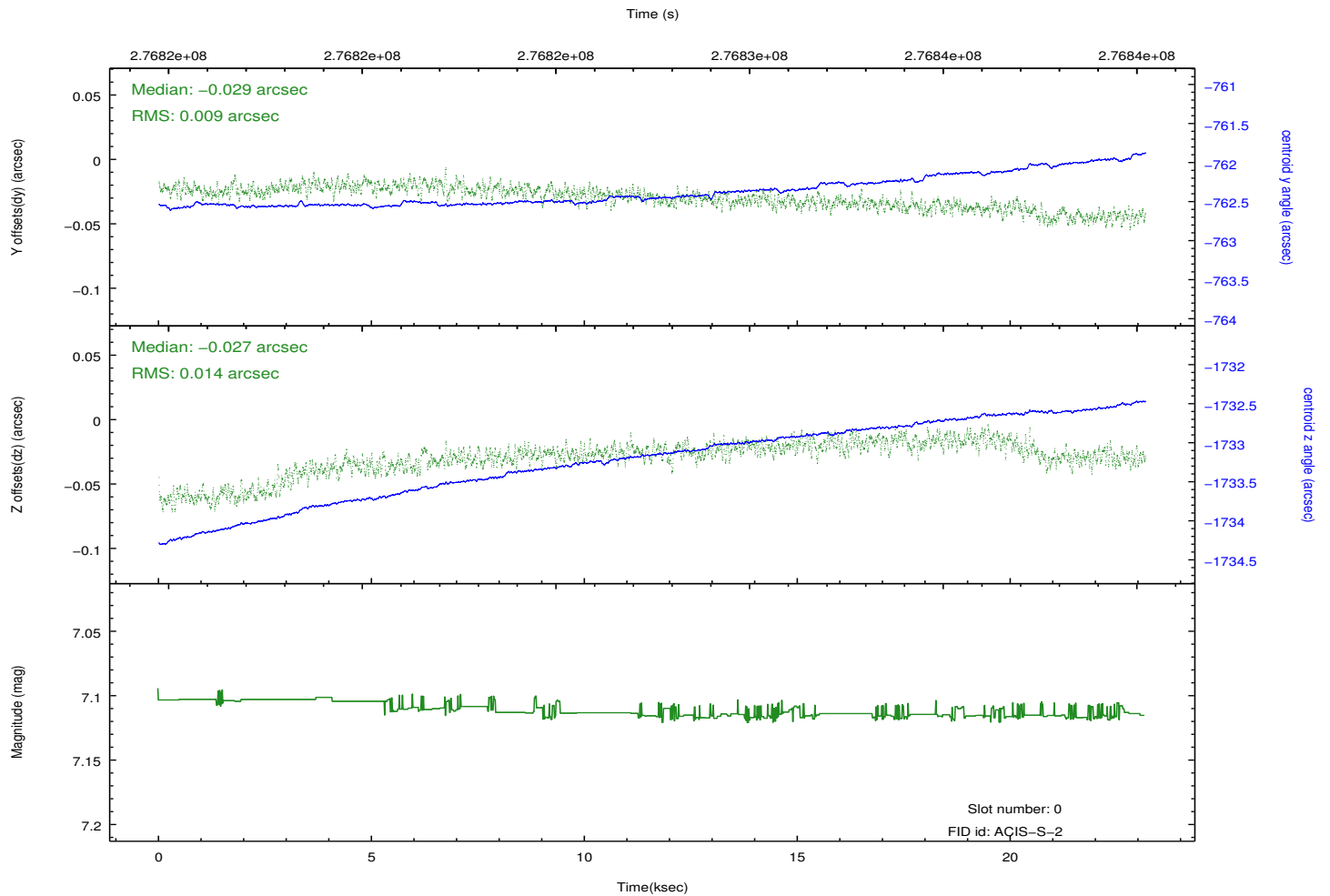
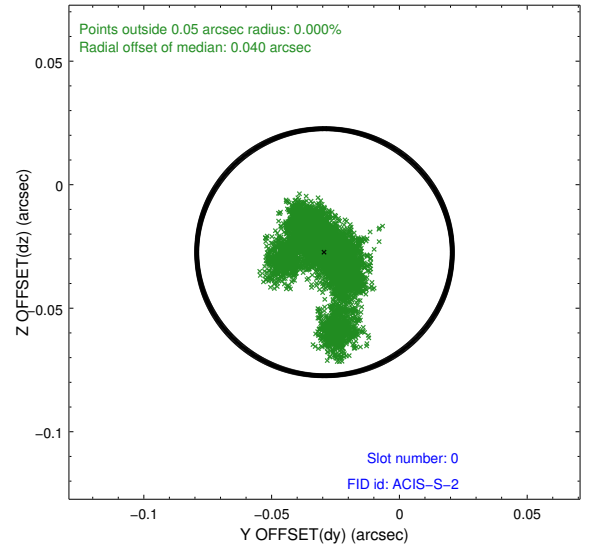
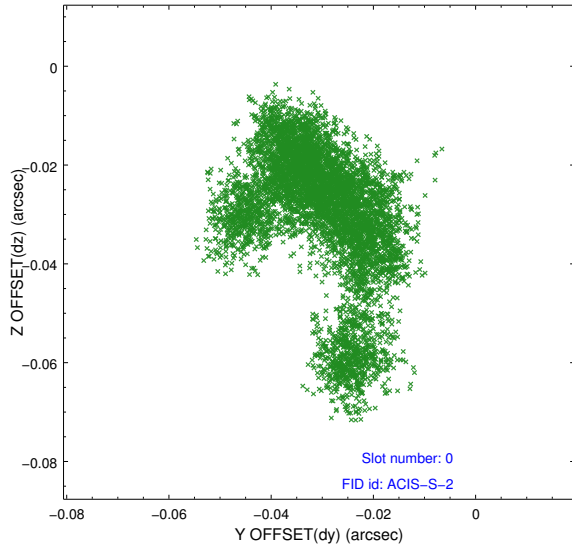


2.4.5 Slot 7

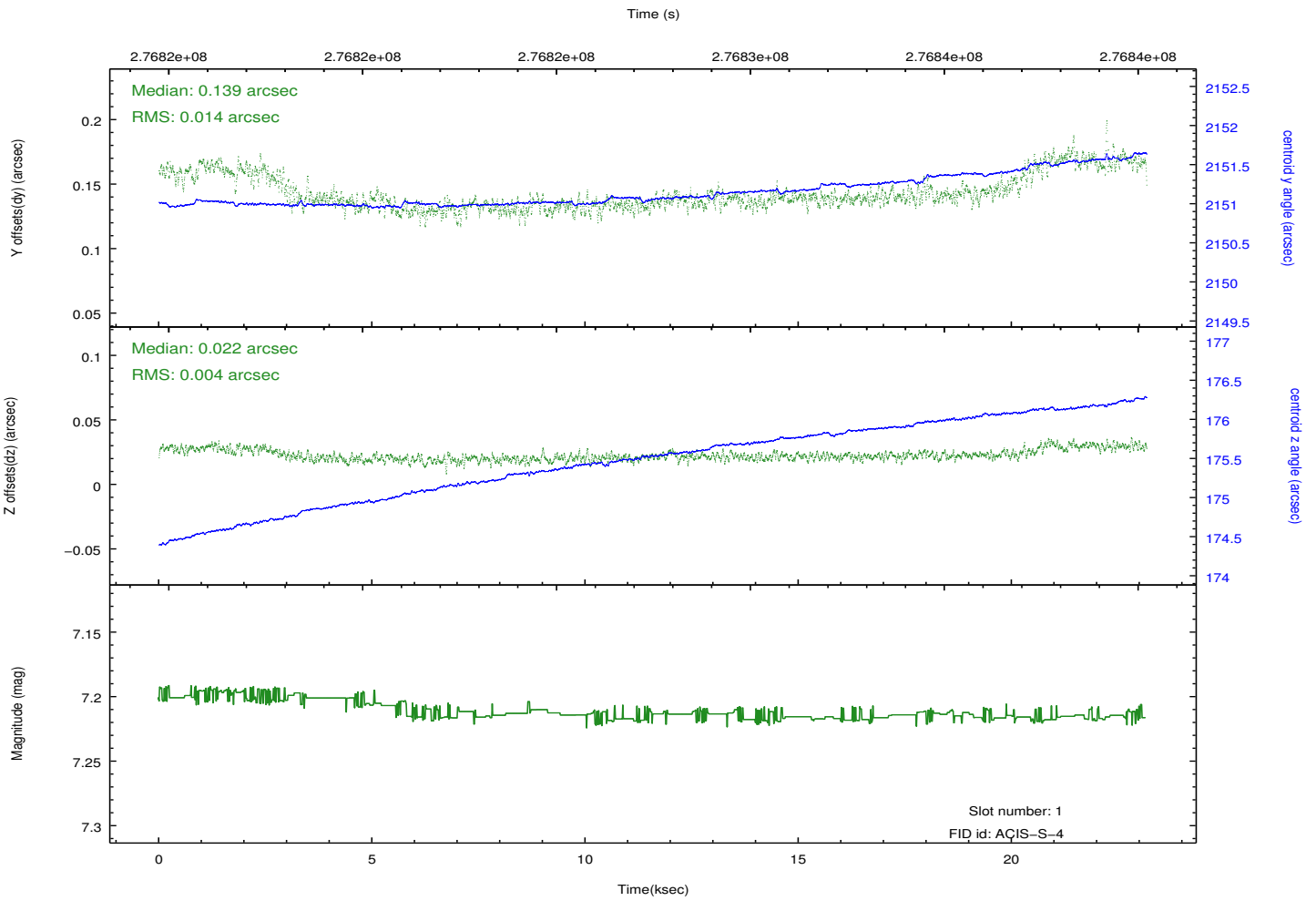
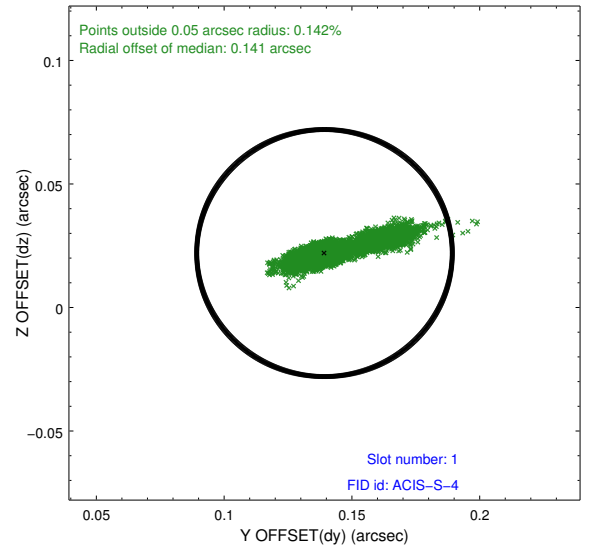
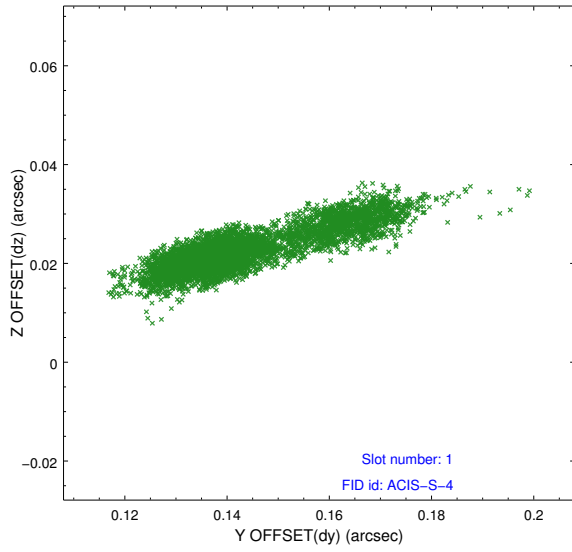


2.5 FID Slots

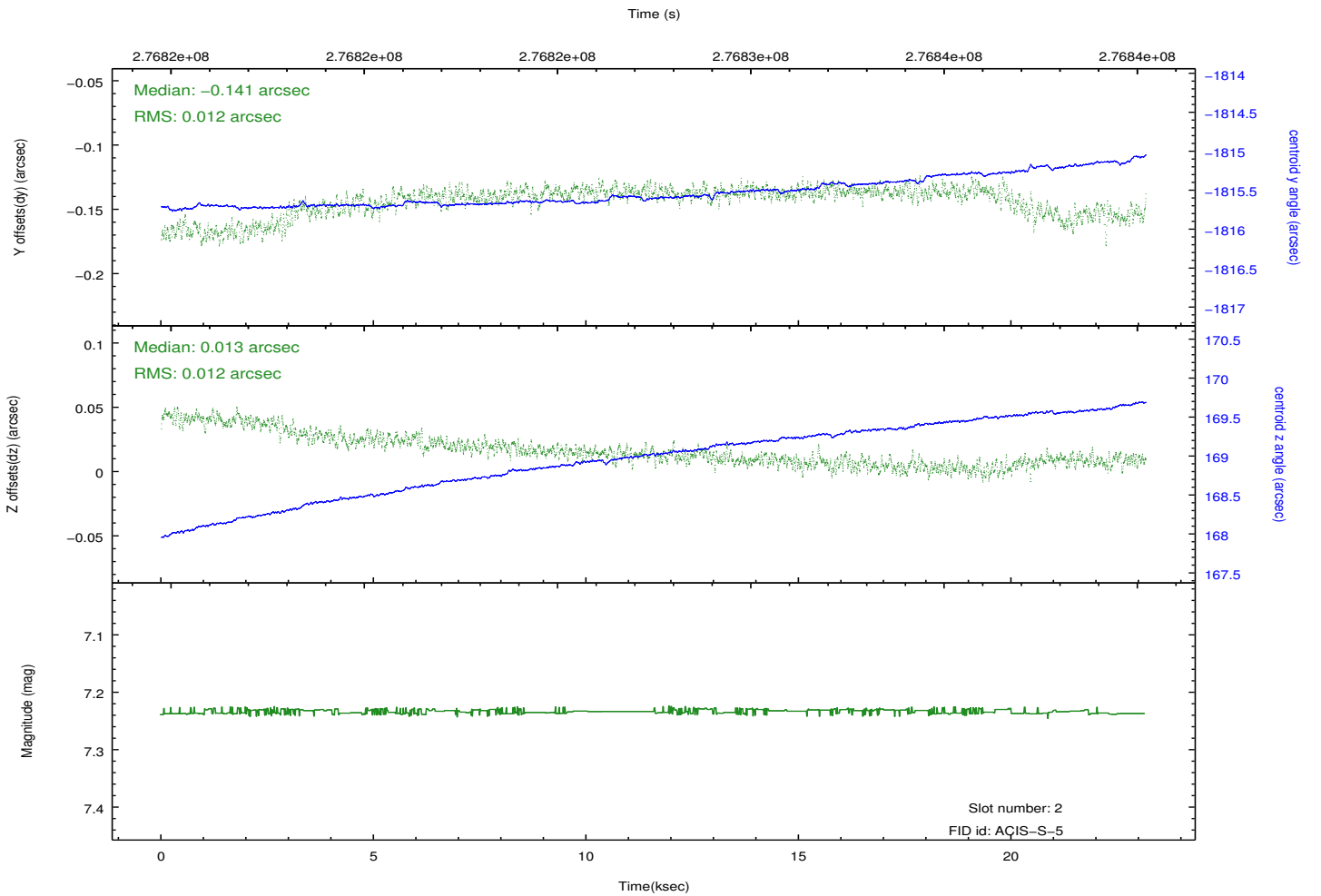
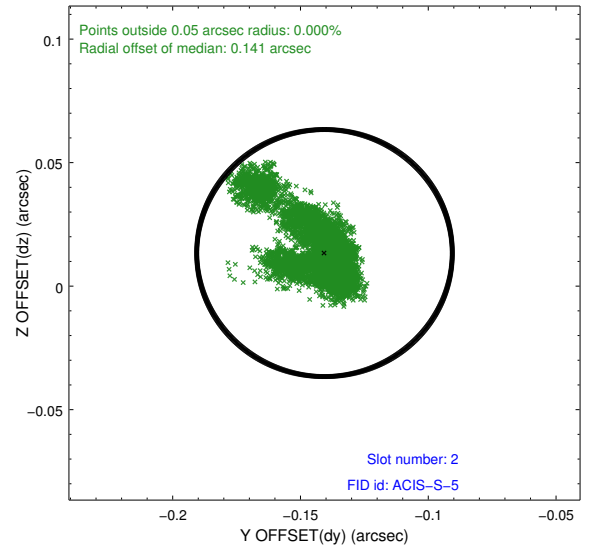
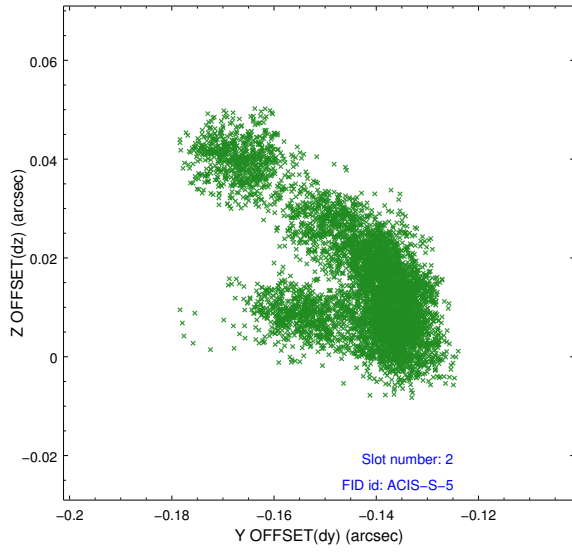
2.5.1 Slot 0



2.5.2 Slot 1



2.5.3 Slot 2



A Summary

A.1 Status

V&V Scientist	Beth Sundheim
V&V Date (YYYY-MM-DD)	2012.04.11
V&V Edition	1
V&V Disposition and Status	OK
V&V Charge Time	23.1601001

A.2 Comments