

V&V Reference Report

L2 ASCDS Version : 8.4.3.1

Observation 7072 - L2 Version 4
Chandra X-Ray Center

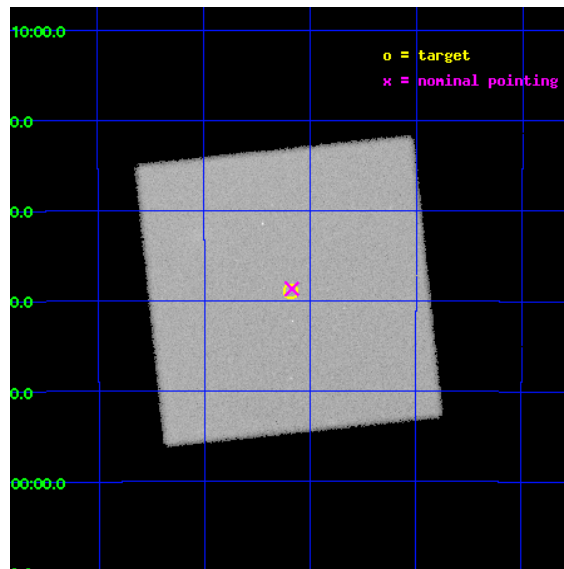
L2 Processing Date : Aug 11 2012

Contents

1	Front	2
2	OBI	3
2.1	OBI	3
2.1.1	Images	3
2.1.2	Parameters	4
2.1.3	Events	4
2.2	Compared Parameters	5
2.3	Aspect	6
2.4	Star Slots	9
2.4.1	Slot 3	9
2.4.2	Slot 4	10
2.4.3	Slot 5	11
2.4.4	Slot 6	12
2.4.5	Slot 7	13
2.5	FID Slots	14
2.5.1	Slot 0	14
2.5.2	Slot 1	15
2.5.3	Slot 2	16
A	Summary	17
A.1	Status	17
A.2	Comments	17

1 Front

seq_num	600510	Sequence number
obs_id	7072	Observation id
title	Locating the Ultraluminous Supersoft X-ray Source in NGC 300	Propo
observer	Prof. Albert Kong	Principal investigator
object	XMMU J005510.7-373855	Source name
ra_targ	13.794583	Observer's specified target RA [deg]
dec_targ	-37.648611	Observer's specified target Dec [deg]
ra_nom	13.793062375998	Nominal RA [deg]
dec_nom	-37.64462981869	Nominal Dec [deg]
roll_nom	128.97158078042	Nominal Roll [deg]
revision	4	Processing version of data
ontime	15187.681959361	[s]
livetime	15051.181802433	Ontime multiplied by DTCOR
l2events	777291	Number of level 2 events

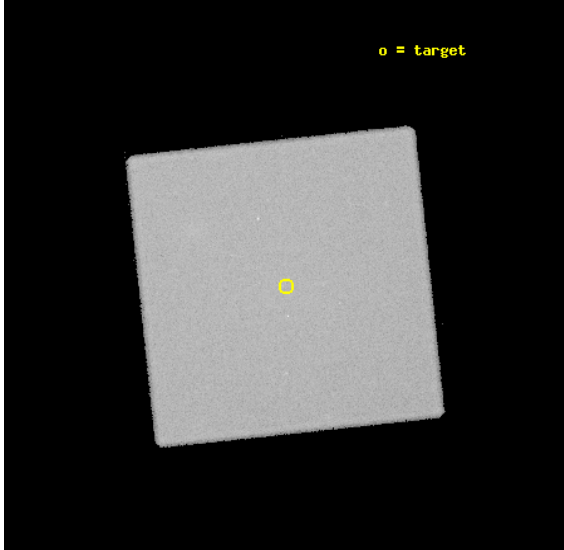


2 OBI

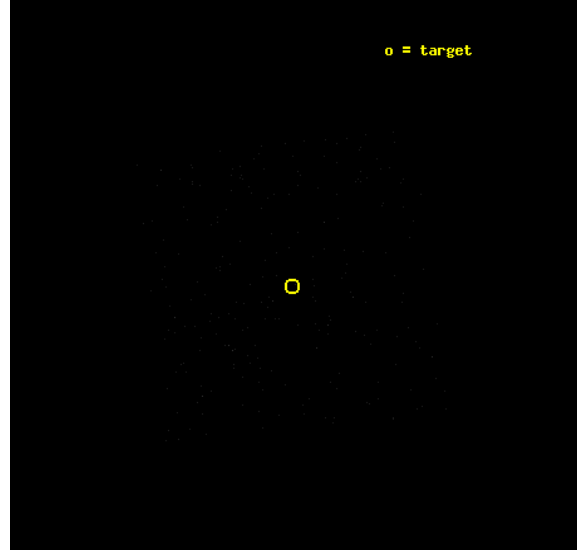
2.1 OBI

2.1.1 Images

Level 1 Image



Level 1 Bad Events



2.1.2 Parameters

obi_num	0	Obi number	sched_exp_time	15000.000000	[s] Scheduled observation exposure time
ascdsver	8.4.5	Processing system revision	ontime	15187.681959361	[s]
caldbver	4.5.1.1	 	l1events	1192746	Number of level 1 events
date	2012-08-11T08:52:07	Date and time of file creation			
revision	4	Processing version of data			

2.1.3 Events

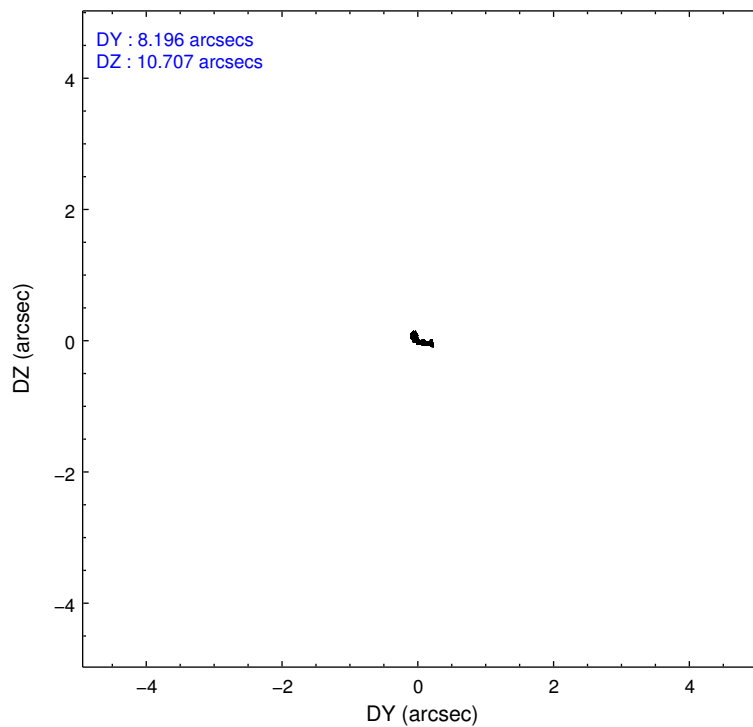
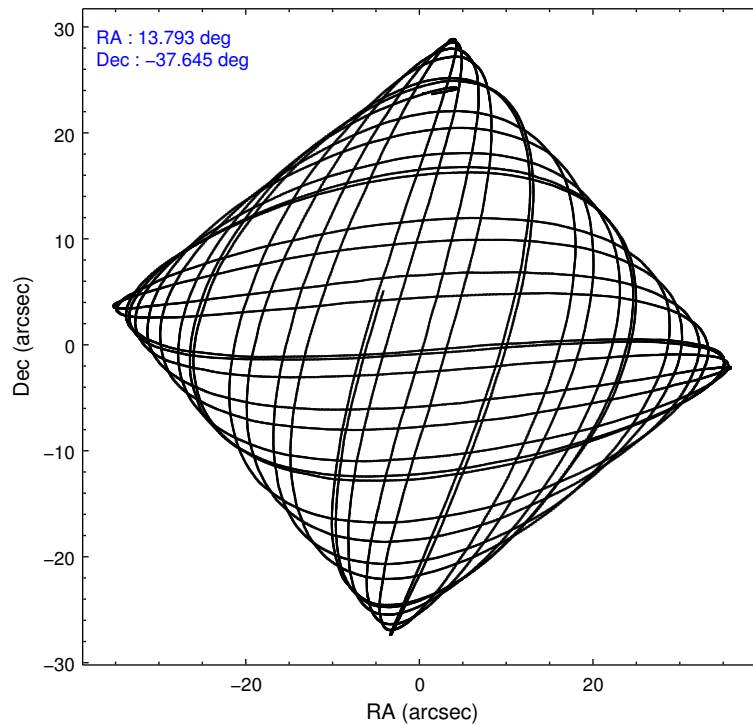
Level 1 Events

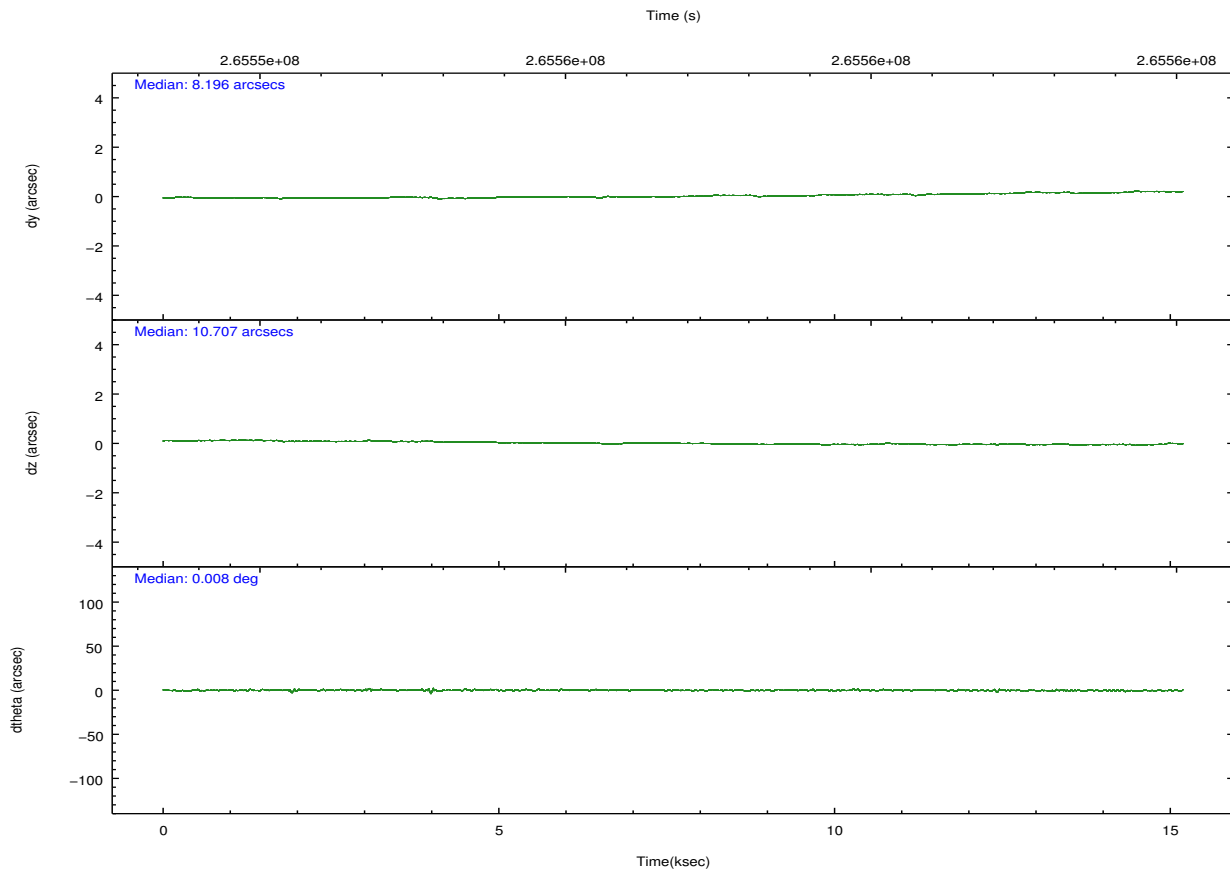
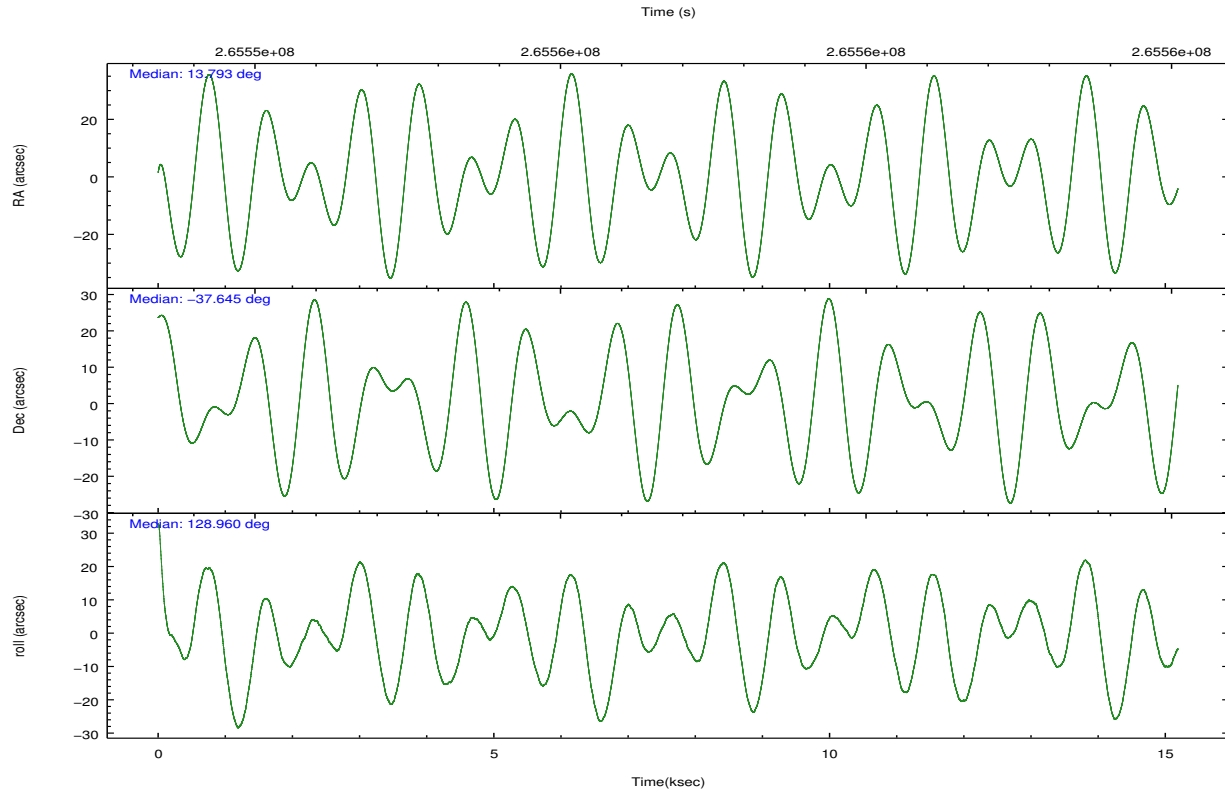
	segment 0
level 1 events	1192746
rejected events	48258
rejected %	4%

2.2 Compared Parameters

Parameter	Planned	Actual	Parameter	Planned	Actual
Instrument	HRC	HRC	Obspar format version number	7	7
Detector	HRC-I	HRC-I	Obspar file type	PREDICTED	ACTUAL
Grating	NONE	NONE	Obspar update status	NONE	UPDATED
Data mode	OBSERVING	OBSERVING			
Observation mode	POINTING	POINTING			
[deg] Pointing RA	13.825337	13.79306237599753			
[deg] Pointing Dec	-37.653740	-37.64462981868969			
[deg] Pointing Roll	129.086775	128.9715807804176			
[mm] SIM focus pos	-1.040293	-1.038866356238299			
[mm] SIM defocus	0	0.001426264420575141			
[mm] SIM translation stage pos	126.985494	126.9829799899862			
[mm] SIM translation stage offset	0	0.002508901615314585			
[s] Observation start time (MET)	265549356.184000	265548569.21226			
Observation start date	2006-06-01T11:41:31	2006-06-01T11:29:29			
[s] Observation end time (MET)	265564356.184000	265565272.10054			
Observation end date	2006-06-01T15:51:31	2006-06-01T16:07:52			

2.3 Aspect



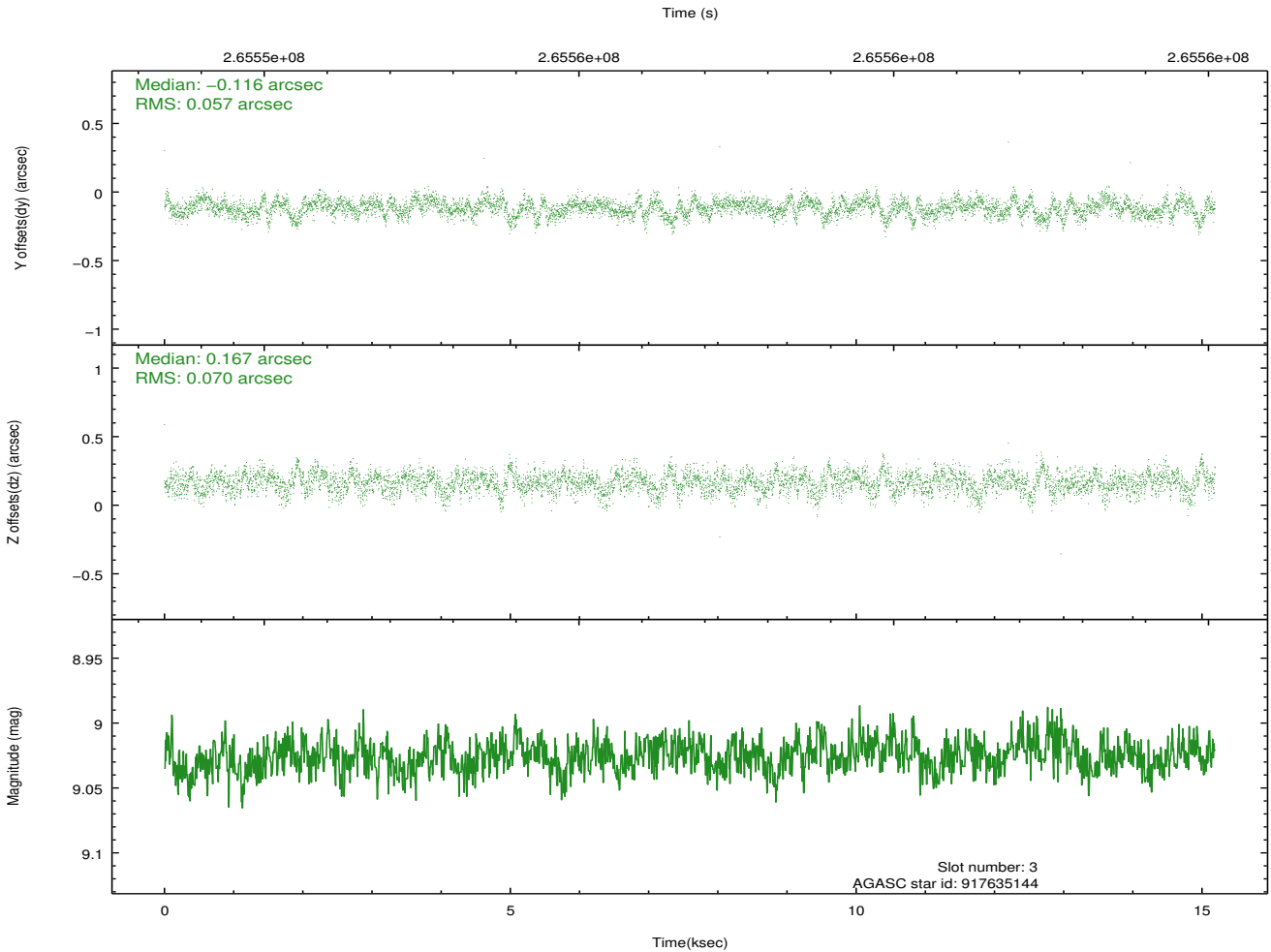
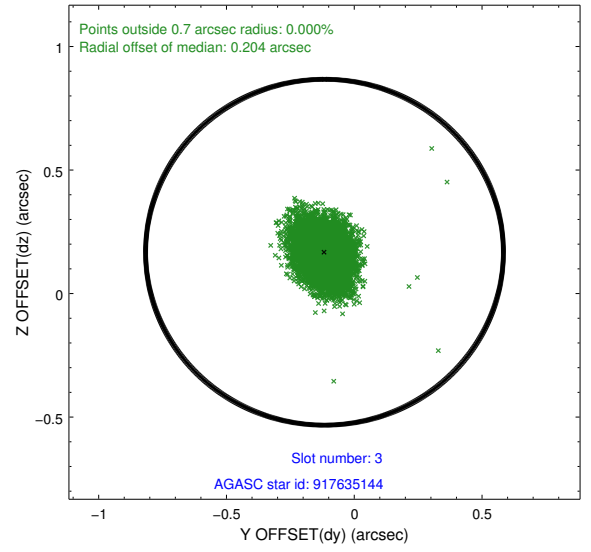
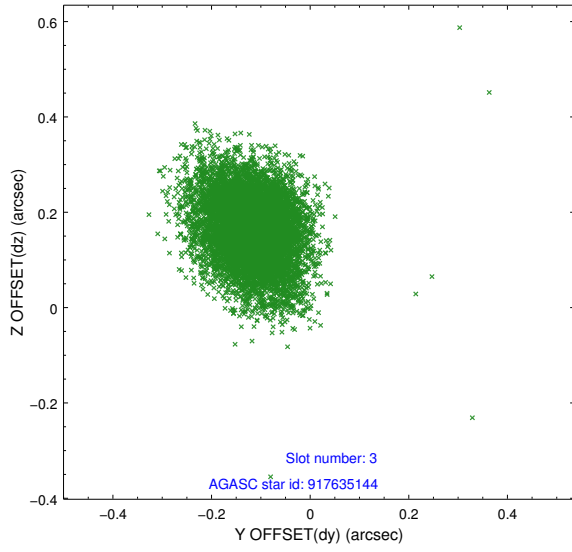


Slot Statistics

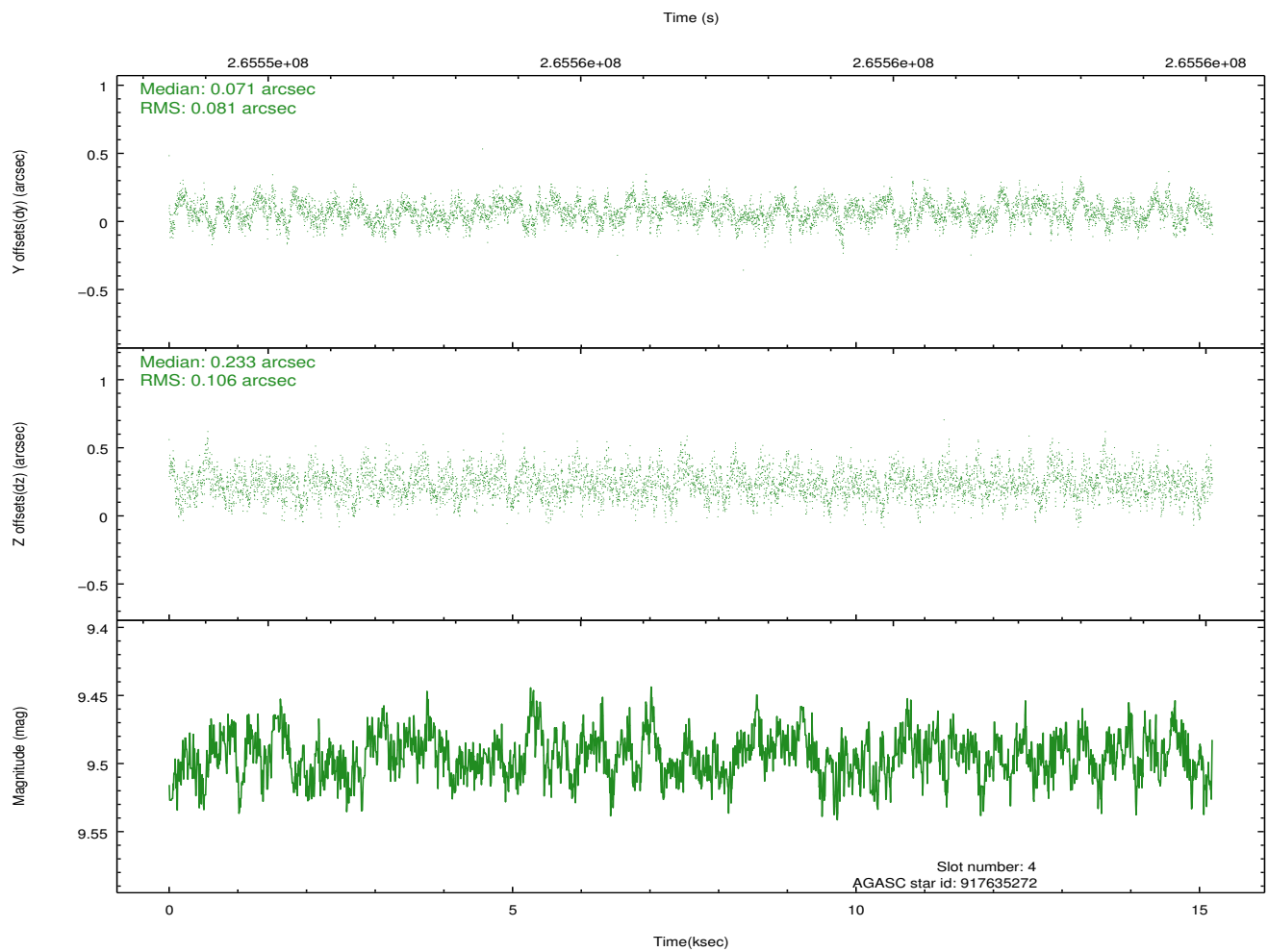
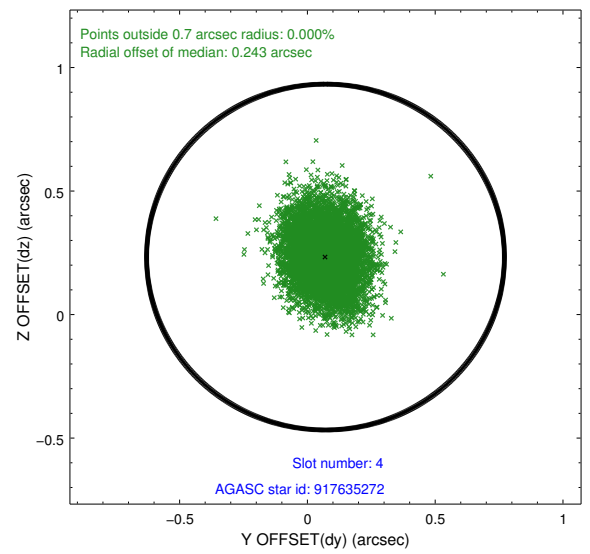
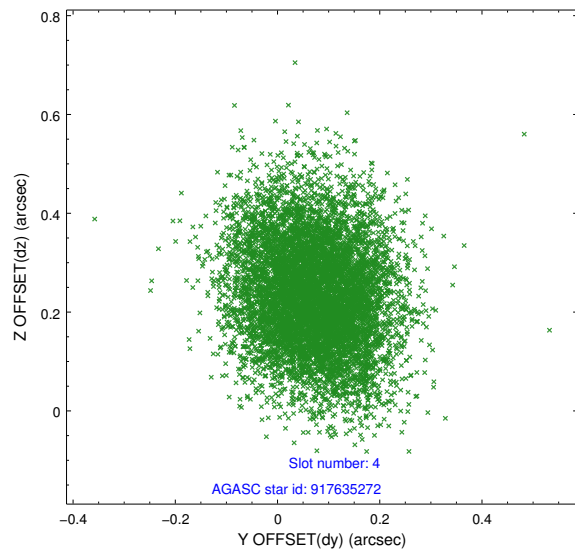
slot	status	id	mag	n_pts	med_dy	med_dz	dr1	dr2	ra	dec	mean_y	mean_z
0	FID	HRC-I-1	6.99	3704	-0.033	0.012	0.007	0.011	0.000000	0.000000	-763.85	-1298.68
1	FID	HRC-I-2	7.03	3705	0.145	-0.076	0.006	0.010	0.000000	0.000000	848.75	-1300.66
2	FID	HRC-I-3	7.09	3704	0.008	-0.026	0.006	0.011	0.000000	0.000000	-1192.11	1005.49
3	GUIDE	917635144	9.03	7408	-0.116	0.167	0.094	0.157	14.182427	-37.216967	573.80	-1784.36
4	GUIDE	917635272	9.49	7402	0.071	0.233	0.140	0.232	14.709652	-37.494575	-1156.33	-2314.65
5	GUIDE	987366320	8.82	7400	0.084	-0.269	0.086	0.140	13.580534	-38.230952	-1177.35	1847.40
6	GUIDE	987367984	8.70	7407	-0.020	0.056	0.073	0.118	13.861833	-37.523988	295.93	-374.96
7	GUIDE	987366712	8.56	7405	-0.016	-0.186	0.078	0.126	13.414846	-37.970472	-152.86	1624.61

2.4 Star Slots

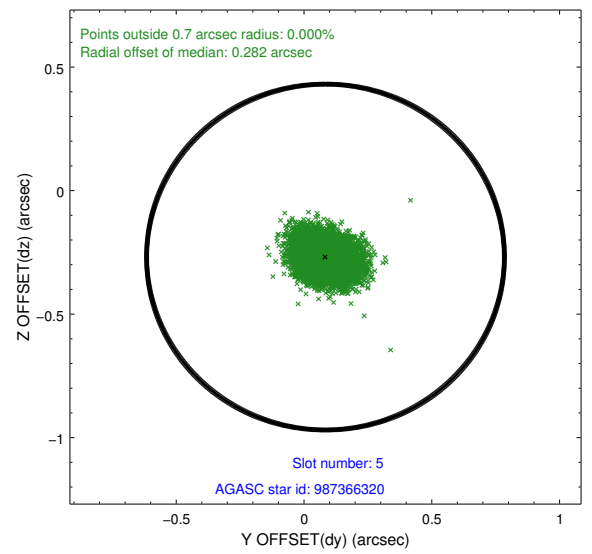
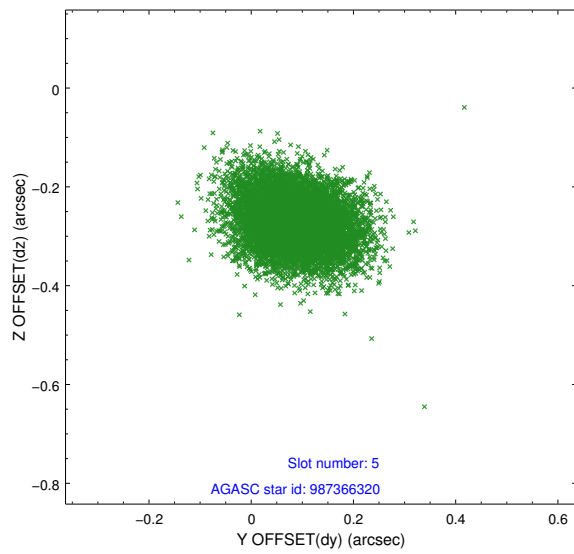
2.4.1 Slot 3



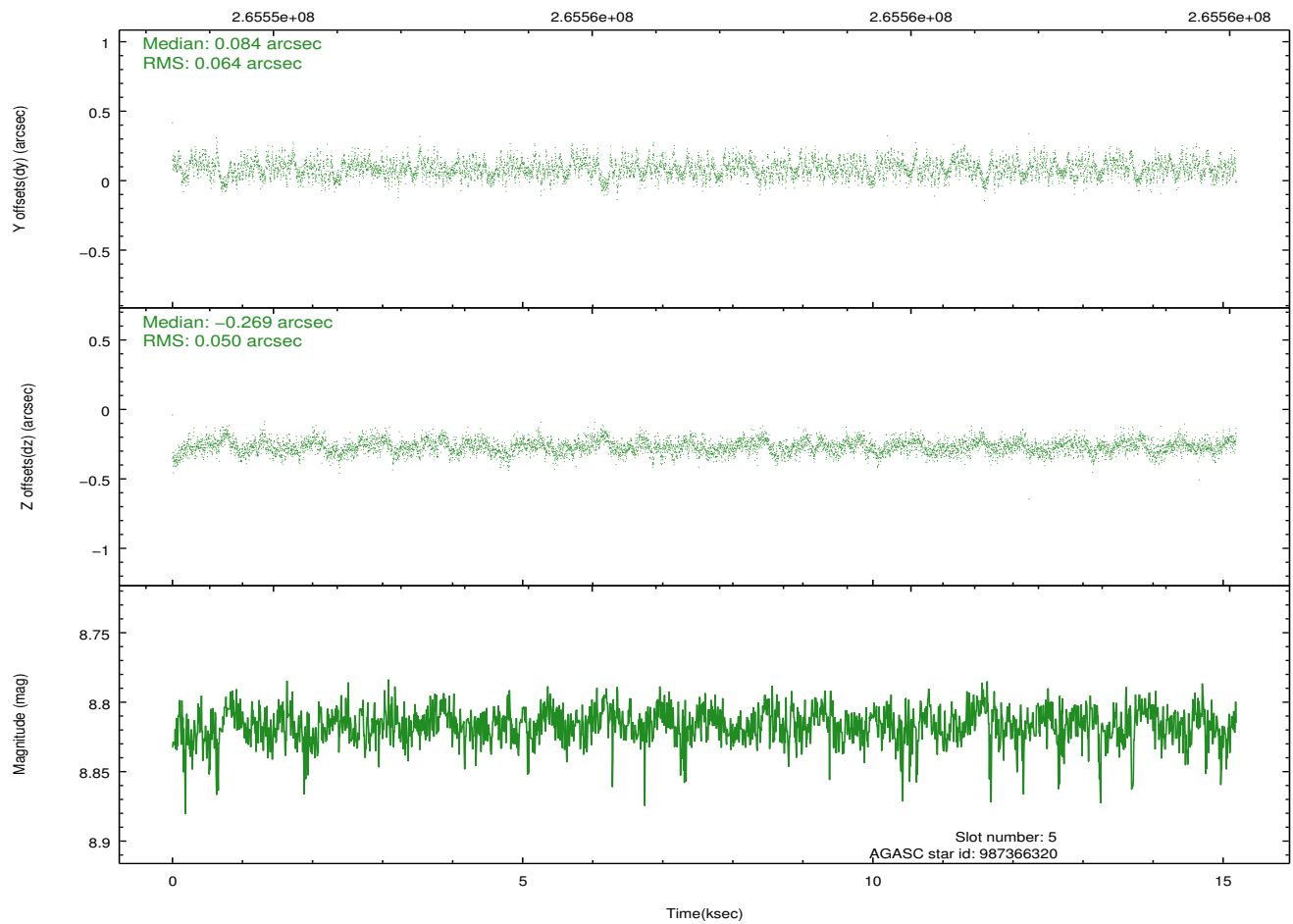
2.4.2 Slot 4



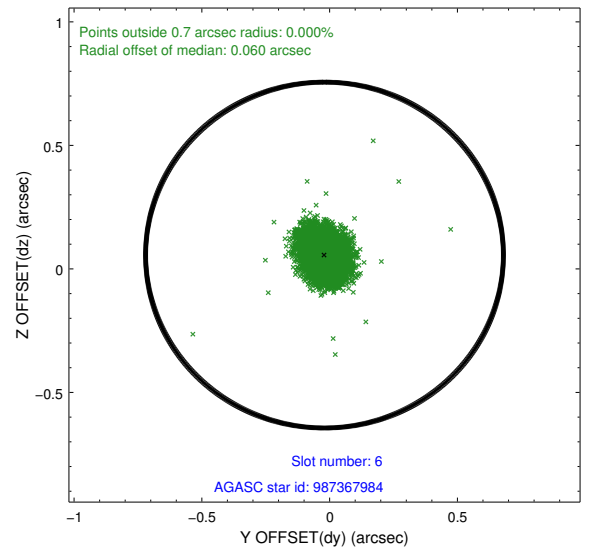
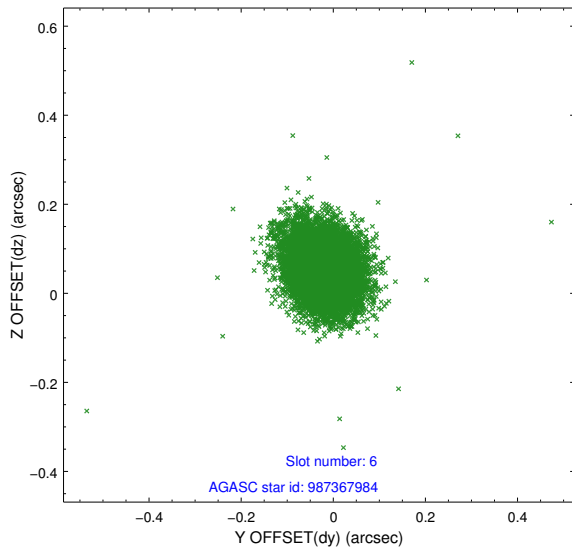
2.4.3 Slot 5



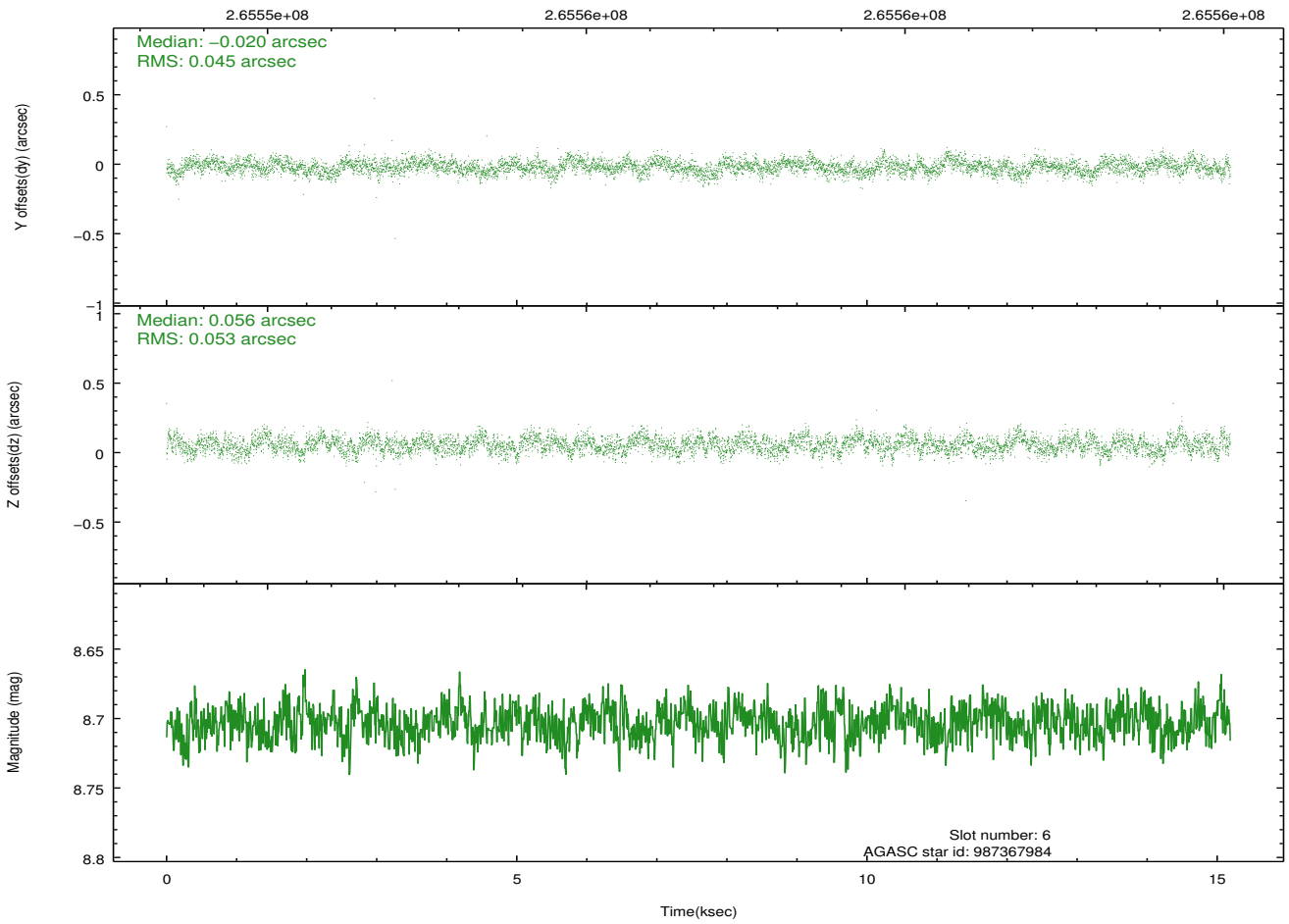
Time (s)



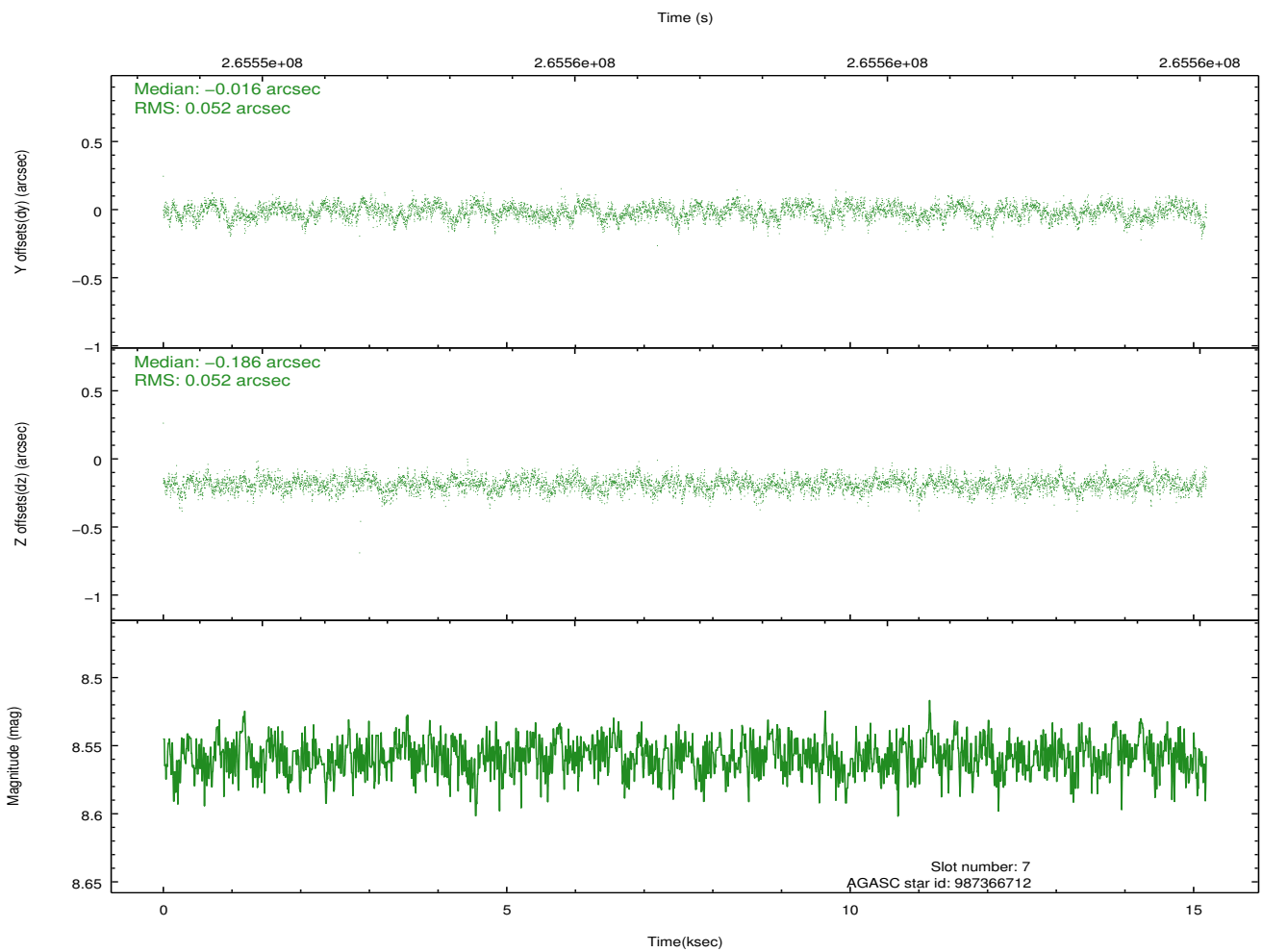
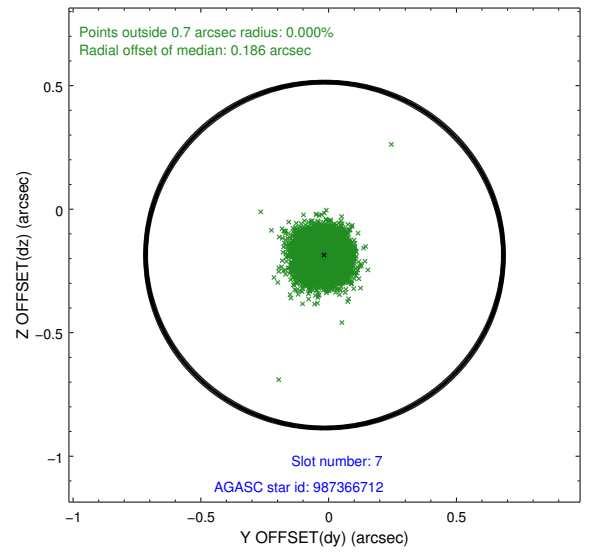
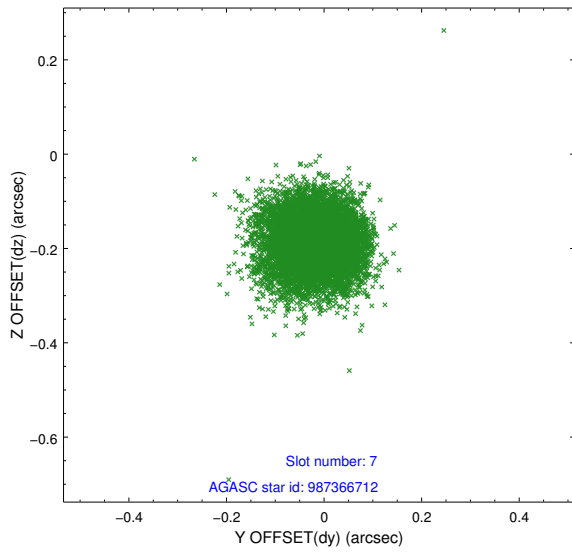
2.4.4 Slot 6



Time (s)

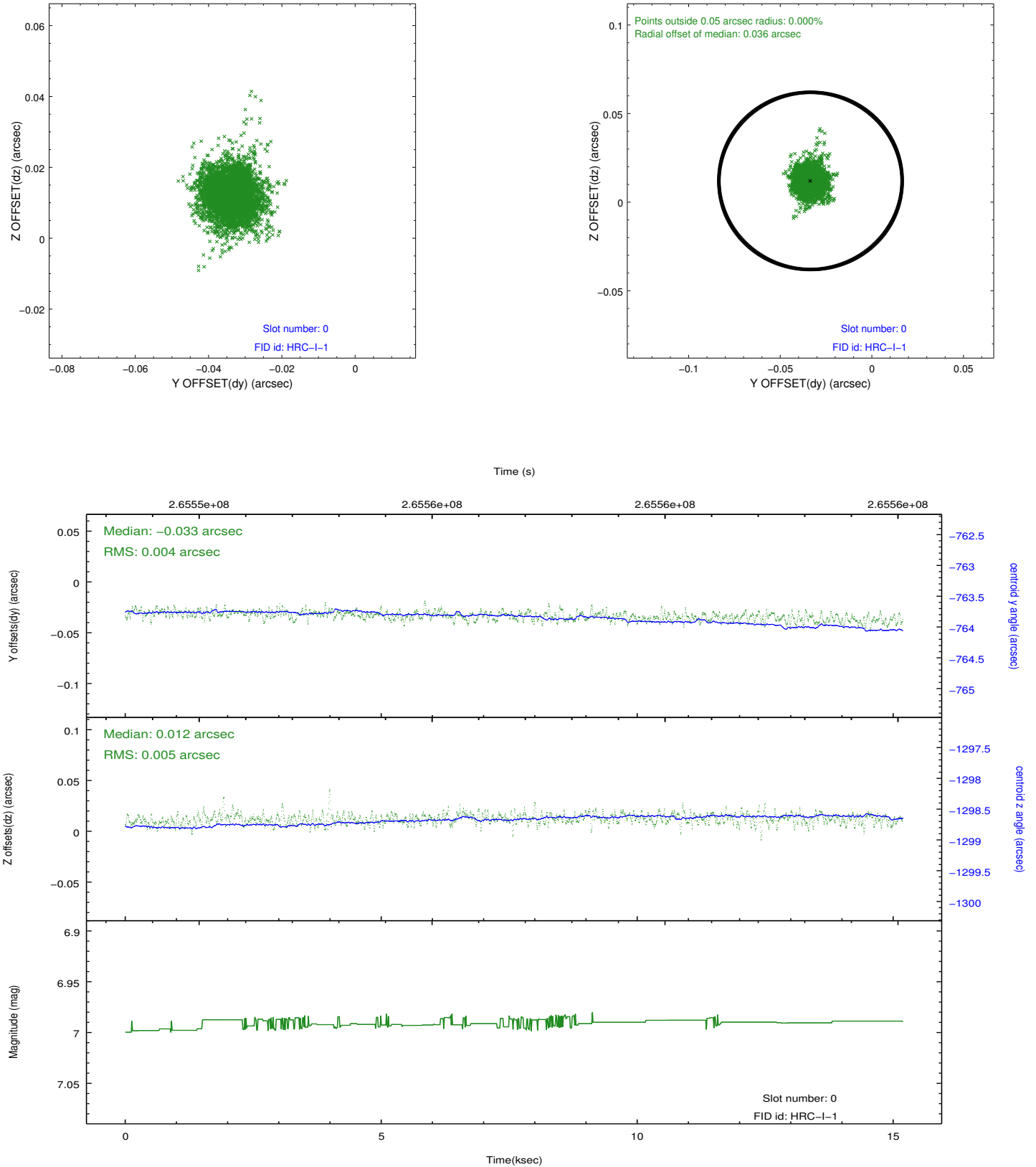


2.4.5 Slot 7

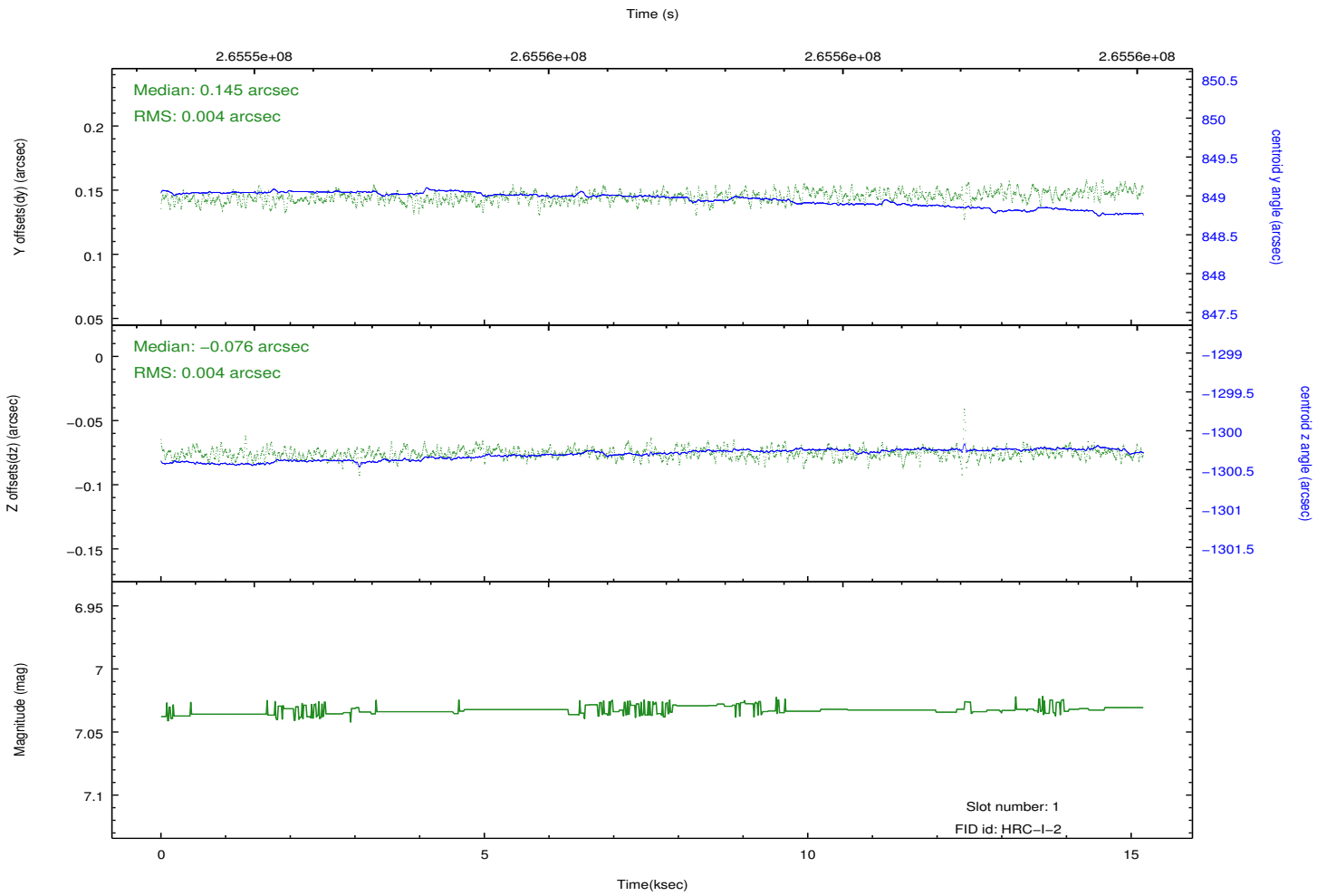
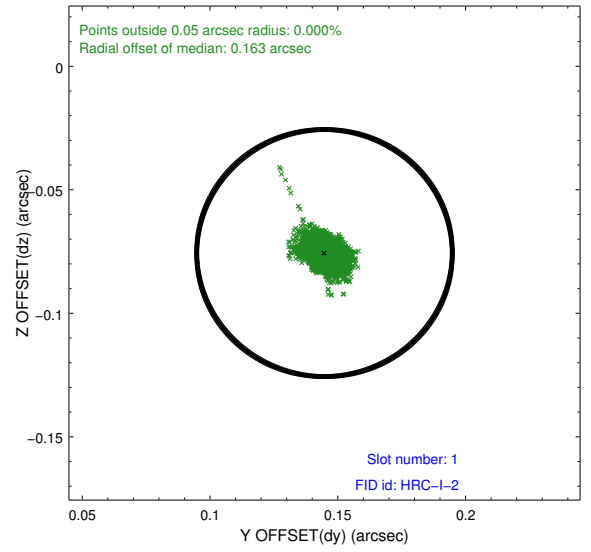
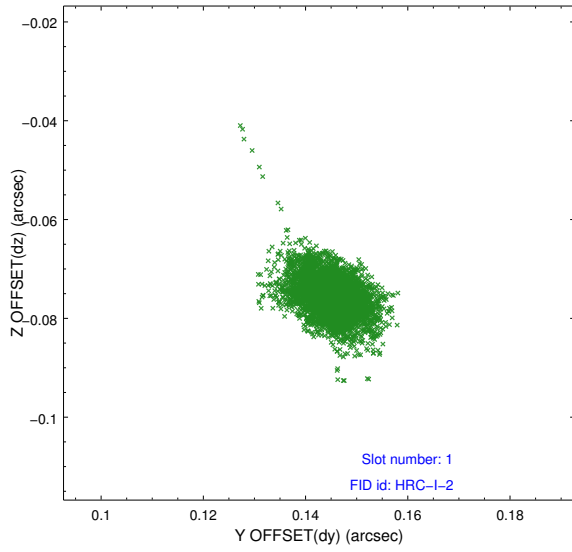


2.5 FID Slots

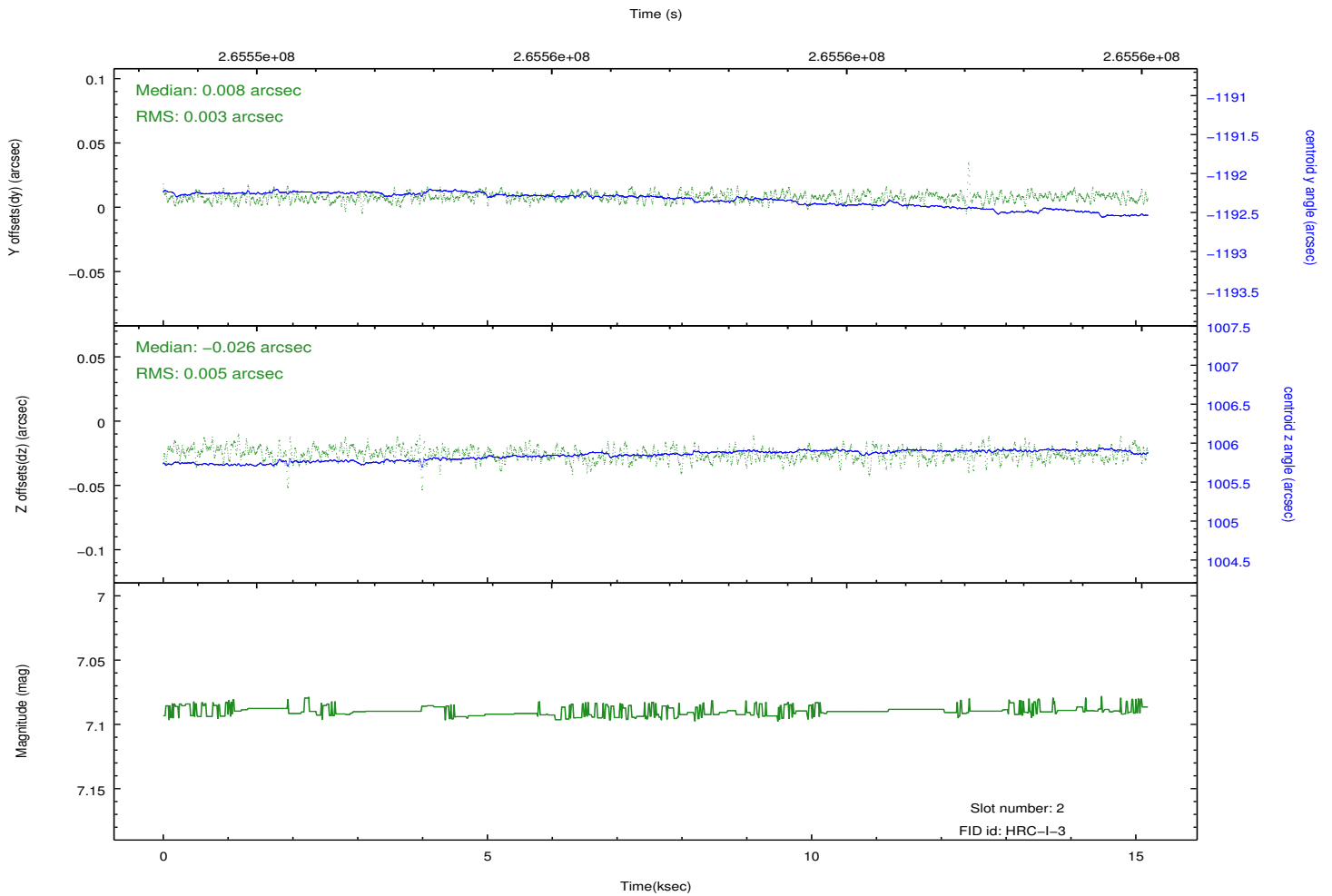
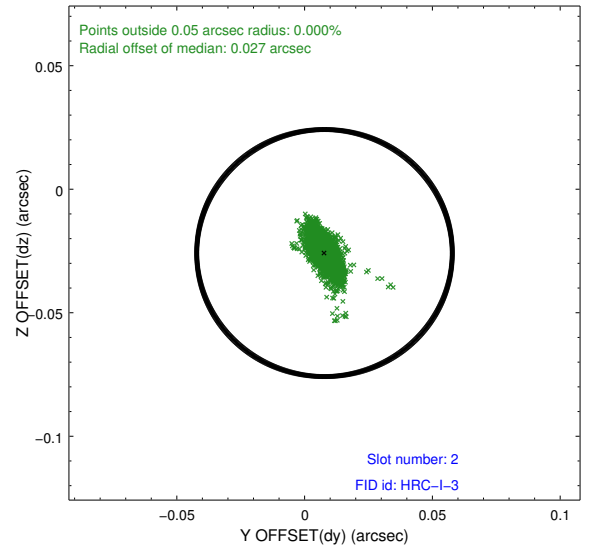
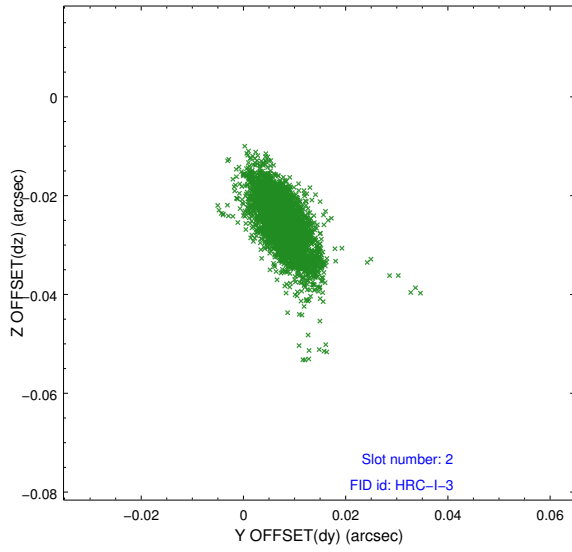
2.5.1 Slot 0



2.5.2 Slot 1



2.5.3 Slot 2



A Summary

A.1 Status

V&V Scientist	Beth Sundheim
V&V Date (YYYY-MM-DD)	2012.08.13
V&V Edition	1
V&V Disposition and Status	OK
V&V Charge Time	15.1876819

A.2 Comments