

V&V Reference Report

L2 ASCDS Version : 8.4.3.1

Observation 7082 - L2 Version 2
Chandra X-Ray Center

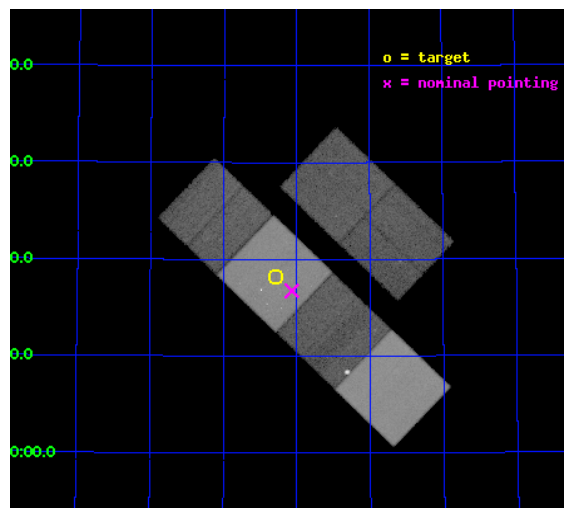
L2 Processing Date : Apr 13 2012

Contents

1	Front	2
2	OBI	3
2.1	OBI	3
2.1.1	Images	3
2.1.2	Bias	3
2.1.3	Parameters	4
2.1.4	Events	4
2.2	Compared Parameters	5
2.3	Aspect	6
2.4	Star Slots	9
2.4.1	Slot 3	9
2.4.2	Slot 4	10
2.4.3	Slot 5	11
2.4.4	Slot 6	12
2.4.5	Slot 7	13
2.5	FID Slots	14
2.5.1	Slot 0	14
2.5.2	Slot 1	15
2.5.3	Slot 2	16
A	Summary	17
A.1	Status	17
A.2	Comments	17

1 Front

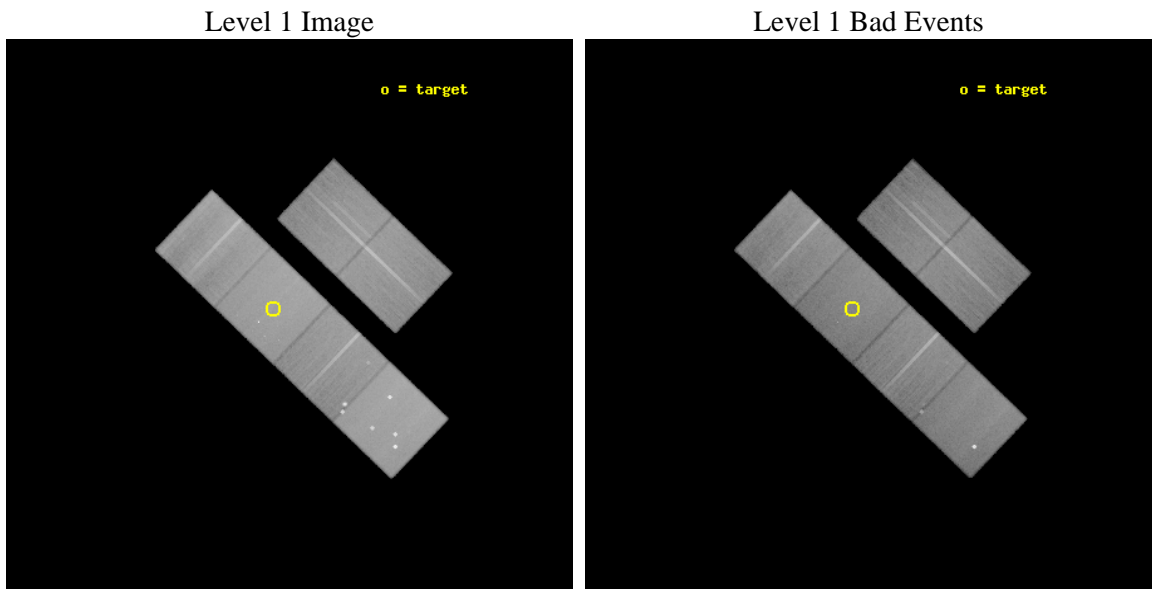
seq_num	600520	Sequence number
obs_id	7082	Observation id
title	A Deep Chandra Observation of Our Local Starburst, IC 10	Proposal
observer	Dr Andrea Prestwich	Principal investigator
object	IC 10	Source name
dtcycle	0	
cycle	P	events from which exps? Prim/Second/Both
ra_targ	5.072083	Observer's specified target RA [deg]
dec_targ	59.303778	Observer's specified target Dec [deg]
ra_nom	5.0167822277982	Nominal RA [deg]
dec_nom	59.279251423242	Nominal Dec [deg]
roll_nom	223.70416930243	Nominal Roll [deg]
revision	2	Processing version of data
ontime	43135.999839365	Sum of GTIs [s]
livetime	42589.785836019	Livetime [s]
ontime2	43132.75883913	Sum of GTIs [s]
ontime3	43135.999839365	Sum of GTIs [s]
ontime5	43135.999839365	Sum of GTIs [s]
ontime6	43129.517828822	Sum of GTIs [s]
ontime7	43135.999839365	Sum of GTIs [s]
ontime8	43132.758849084	Sum of GTIs [s]
l2events	661229	Number of level 2 events



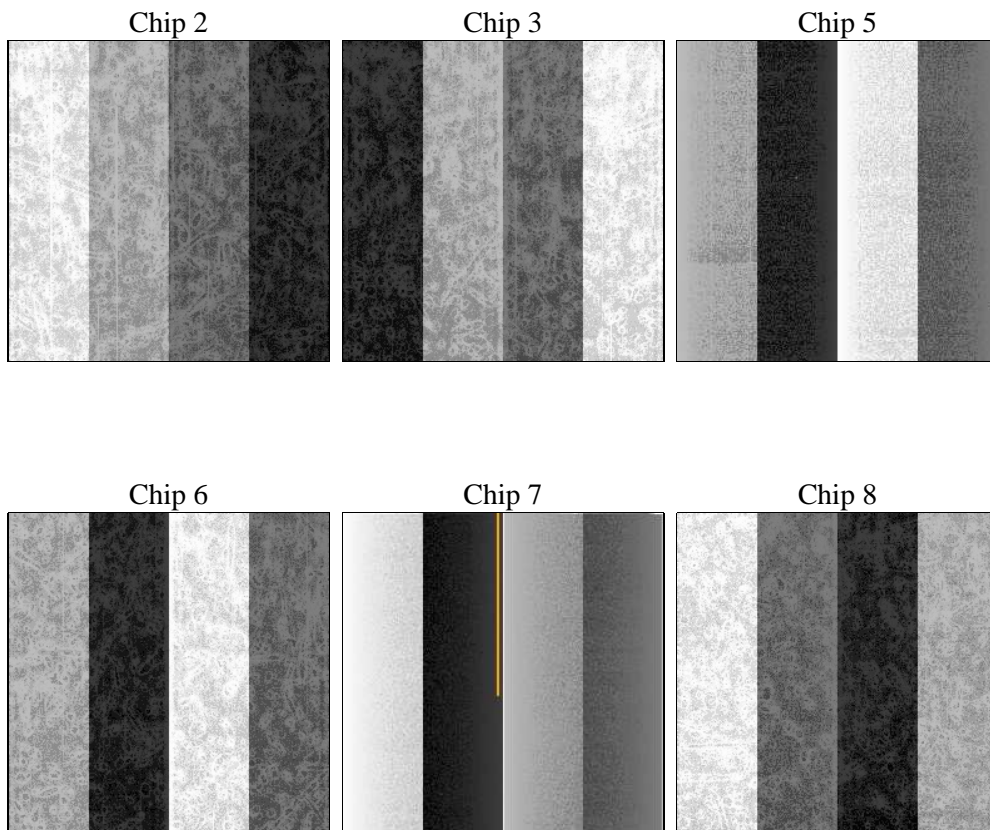
2 OBI

2.1 OBI

2.1.1 Images



2.1.2 Bias



2.1.3 Parameters

obi_num	0	Obi number	sched_exp_time	43000.000000	[s] Scheduled observation exposure time
ascdsver	8.4.3.1	Processing system revision	ontime	43135.999839365	Sum of GTIs [s]
caldbver	4.4.9	 	ontime2	43132.75883913	Sum of GTIs [s]
date	2012-04-13T01:19:05	Date and time of file creation	ontime3	43135.999839365	Sum of GTIs [s]
revision	2	Processing version of data	ontime5	43135.999839365	Sum of GTIs [s]
			ontime6	43129.517828822	Sum of GTIs [s]
			ontime7	43135.999839365	Sum of GTIs [s]
			ontime8	43132.758849084	Sum of GTIs [s]
			l1events	2932840	Number of level 1 events

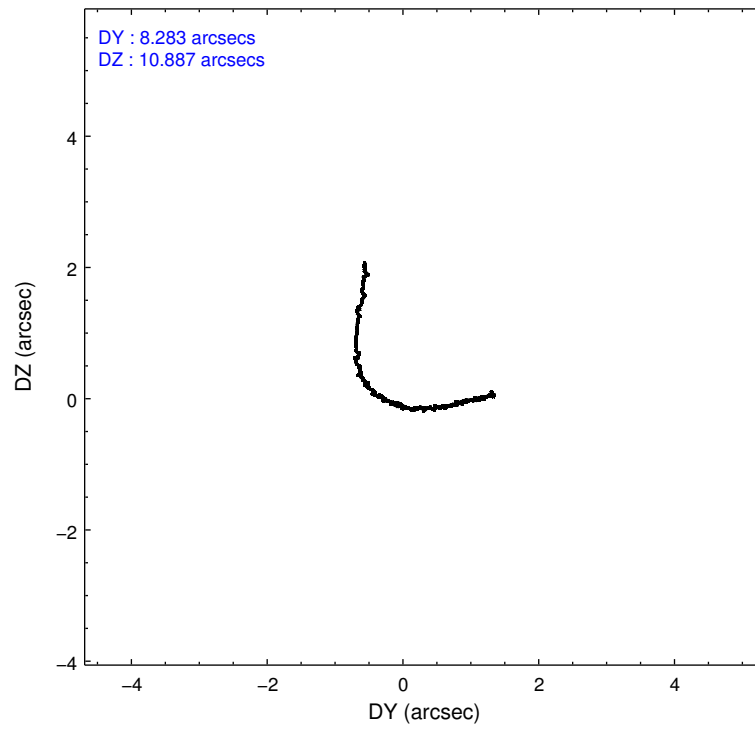
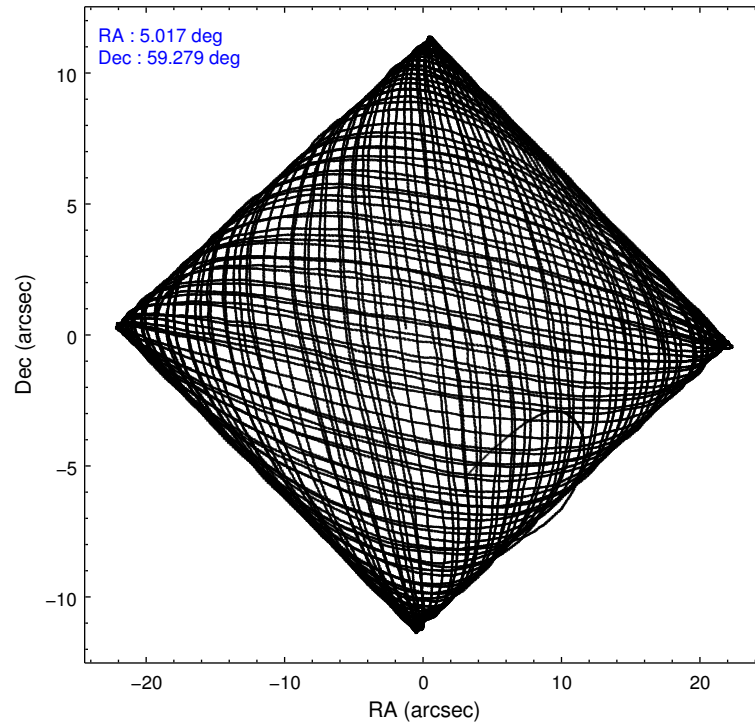
2.1.4 Events

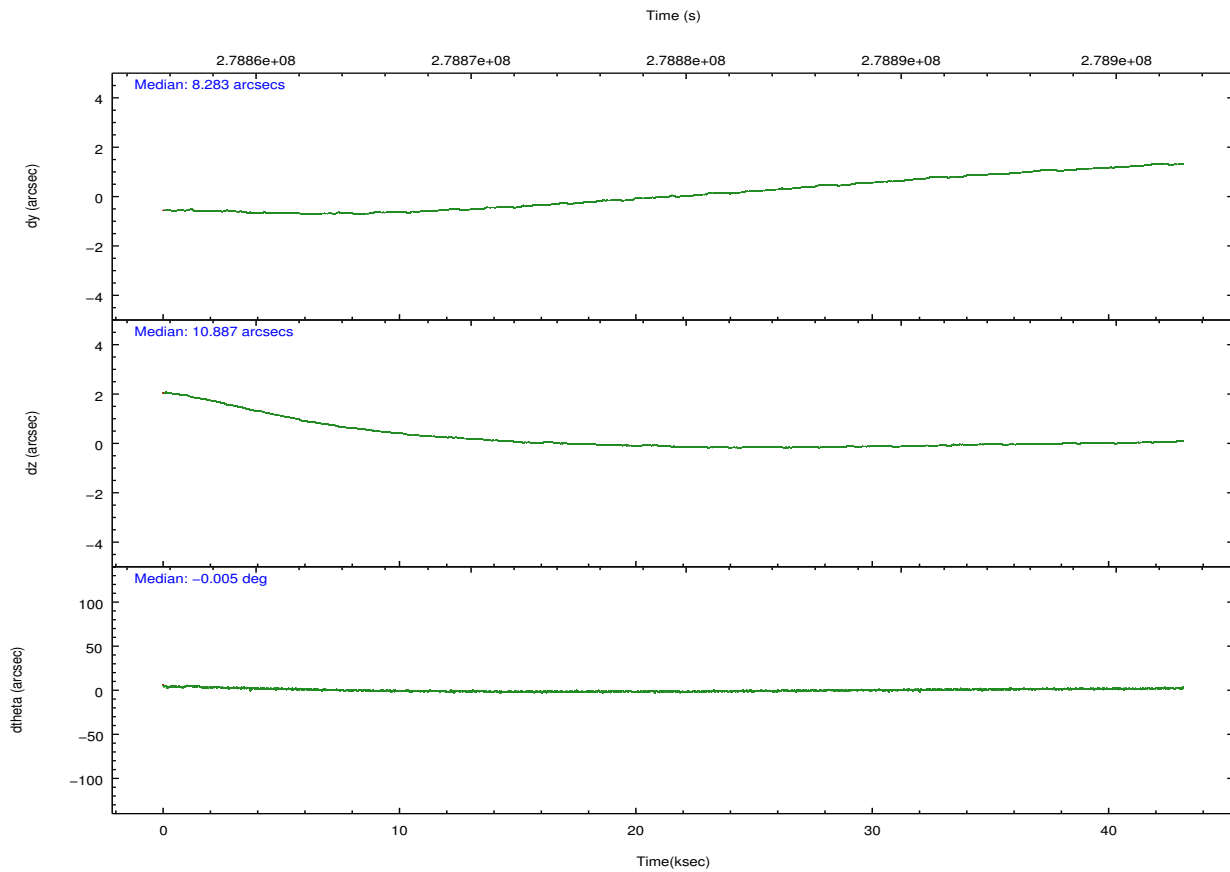
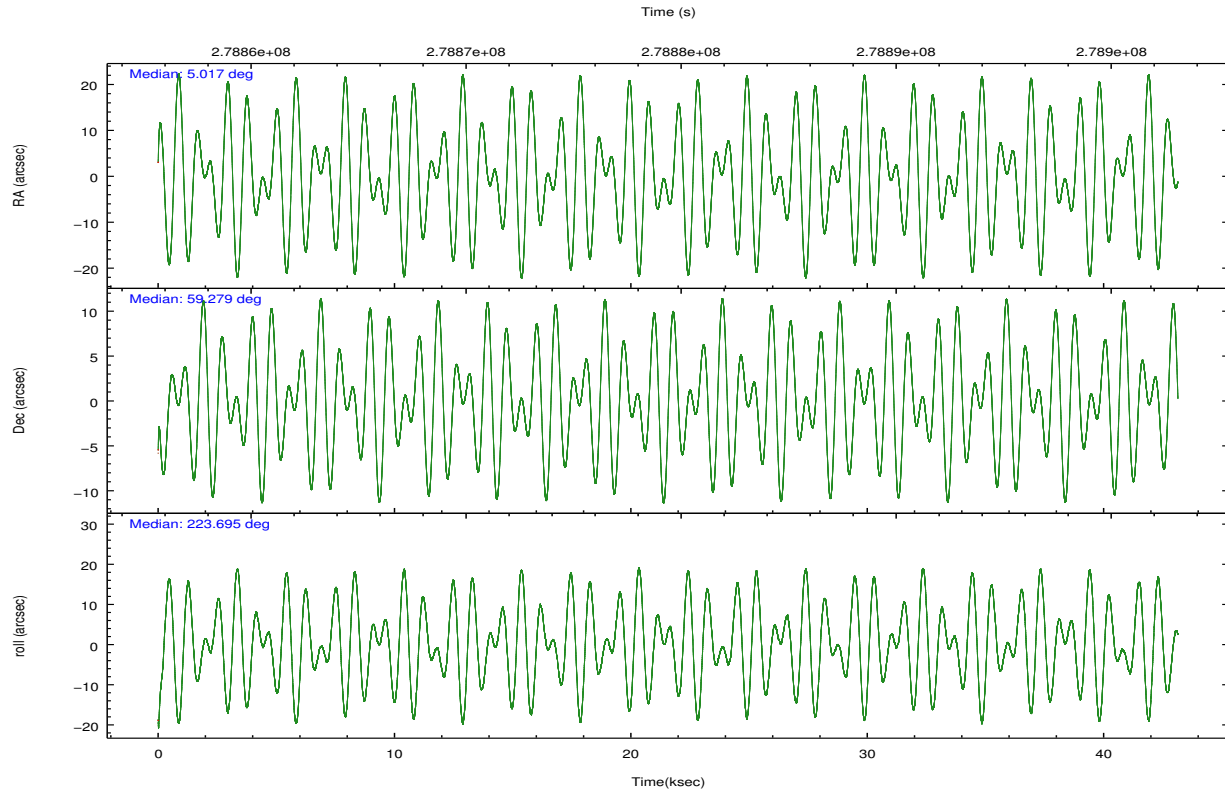
	ccd 2	ccd 3	ccd 5	ccd 6	ccd 7	ccd 8		ccd 2	ccd 3	ccd 5	ccd 6	ccd 7	ccd 8
level 1 events	420118	390089	638573	423477	552314	508269	grade 0 events	19793	19919	41303	25882	20401	34609
rejected events	374265	344079	342223	367230	321492	396849		4%	5%	6%	6%	3%	6%
rejected %	89%	88%	53%	86%	58%	78%	grade 1 events	265	267	1210	300	610	368
								0%	0%	0%	0%	0%	0%
							grade 2 events	10045	8830	86185	11067	46879	25153
								2%	2%	13%	2%	8%	4%
							grade 3 events	4243	4735	10827	4834	20155	11955
								1%	1%	1%	1%	3%	2%
							grade 4 events	4215	4506	10044	4843	19733	11101
								1%	1%	1%	1%	3%	2%
							grade 5 events	15567	18208	45707	18858	51706	24298
								3%	4%	7%	4%	9%	4%
							grade 6 events	7717	8214	149223	9864	124501	29055
								1%	2%	23%	2%	22%	5%
							grade 7 events	358273	325410	294074	347829	268329	371730
								85%	83%	46%	82%	48%	73%

2.2 Compared Parameters

Parameter	Planned	Actual	Parameter	Planned	Actual
Instrument	ACIS	ACIS	Obspar format version number	7	7
Detector	ACIS-235678	ACIS-235678	Obspar file type	PREDICTED	ACTUAL
Grating	NONE	NONE	Obspar update status	NONE	UPDATED
Data mode	FAINT	FAINT	Number of optional ACIS chips dropped	0	0
Observation mode	POINTING	POINTING	On-chip summing requested	N	N
[deg] Pointing RA	5.031063	5.016782227798217	Subarray requested	NONE	NONE
[deg] Pointing Dec	59.305496	59.27925142324202	Alternating exposures requested	N	N
[deg] Pointing Roll	223.535265	223.7041693024256	[s] Primary exposure time	0.000000	3.2
[mm] SIM focus pos	-0.684267	-0.6828225247311905			
[mm] SIM defocus	0	0.001444936568705701			
[mm] SIM translation stage pos	-190.132523	-190.1425803651734			
[mm] SIM translation stage offset	0	0.01005778216563158			
[s] Observation start time (MET)	278857966.184000	278856829.5371			
Observation start date	2006-11-02T12:31:41	2006-11-02T12:13:49			
[s] Observation end time (MET)	278900966.184000	278901862.40173			
Observation end date	2006-11-03T00:28:21	2006-11-03T00:44:22			
Read mode	TIMED	TIMED			

2.3 Aspect



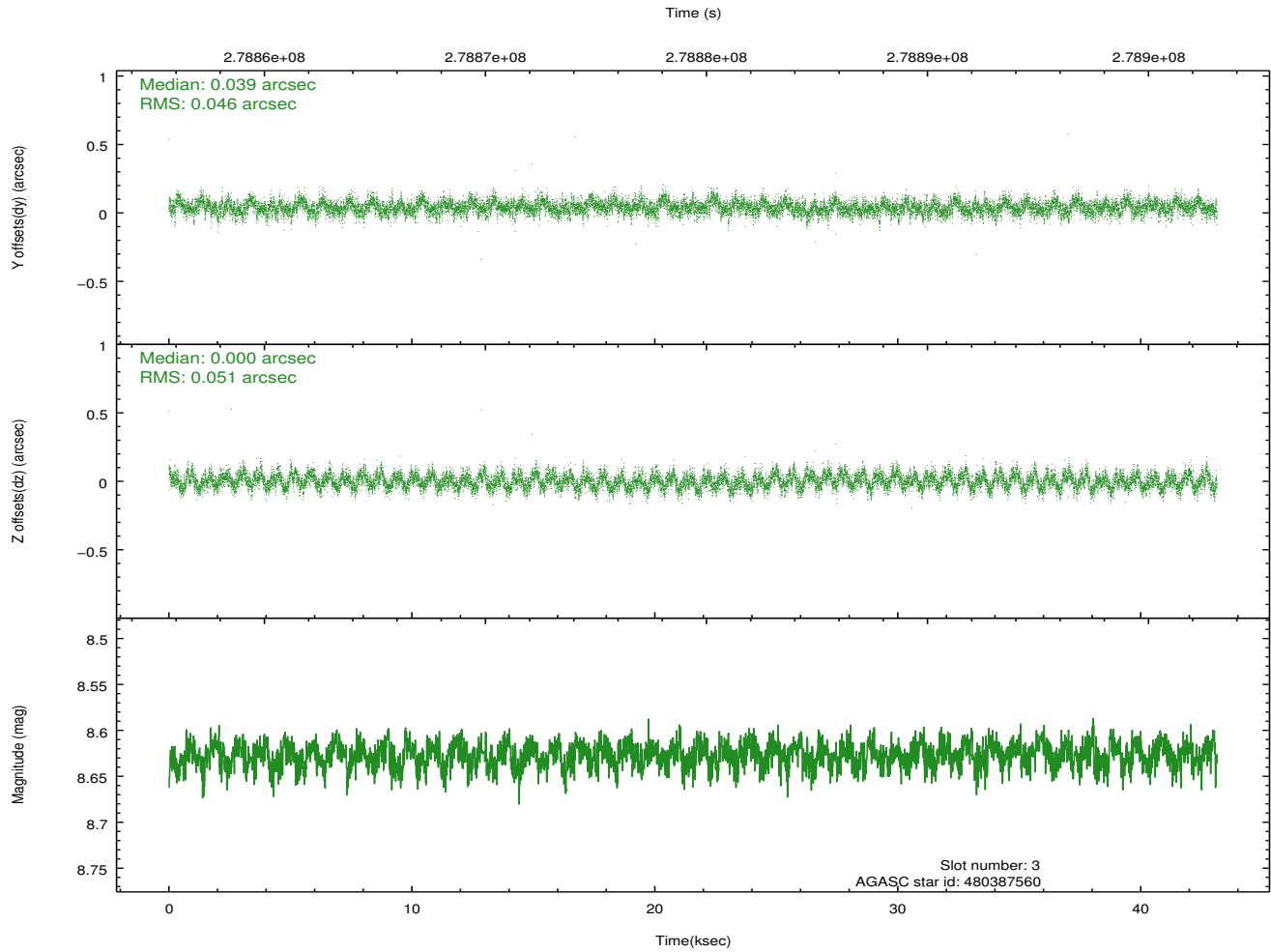
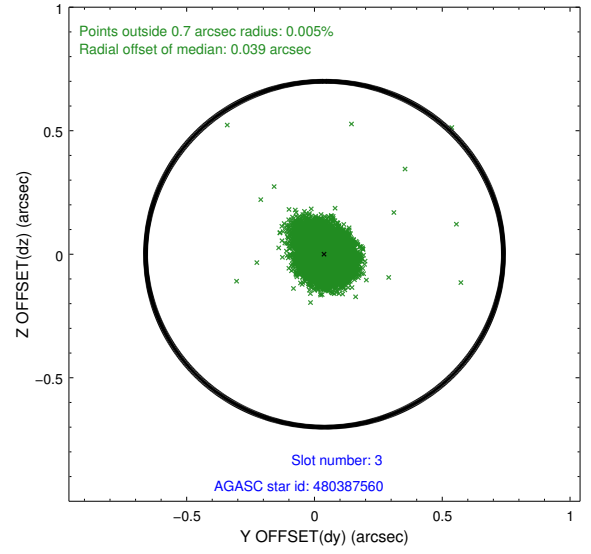
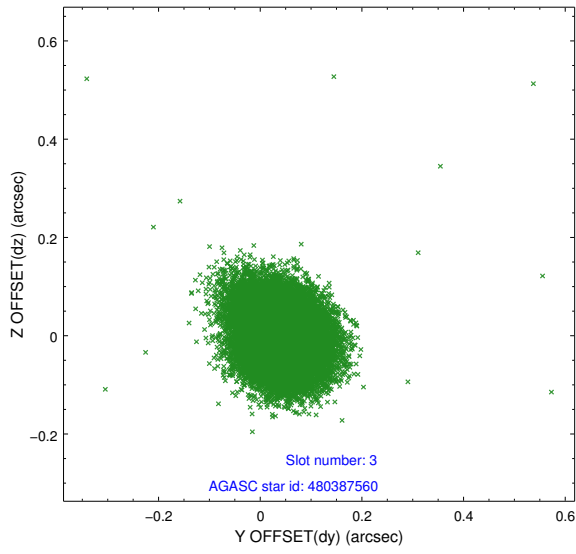


Slot Statistics

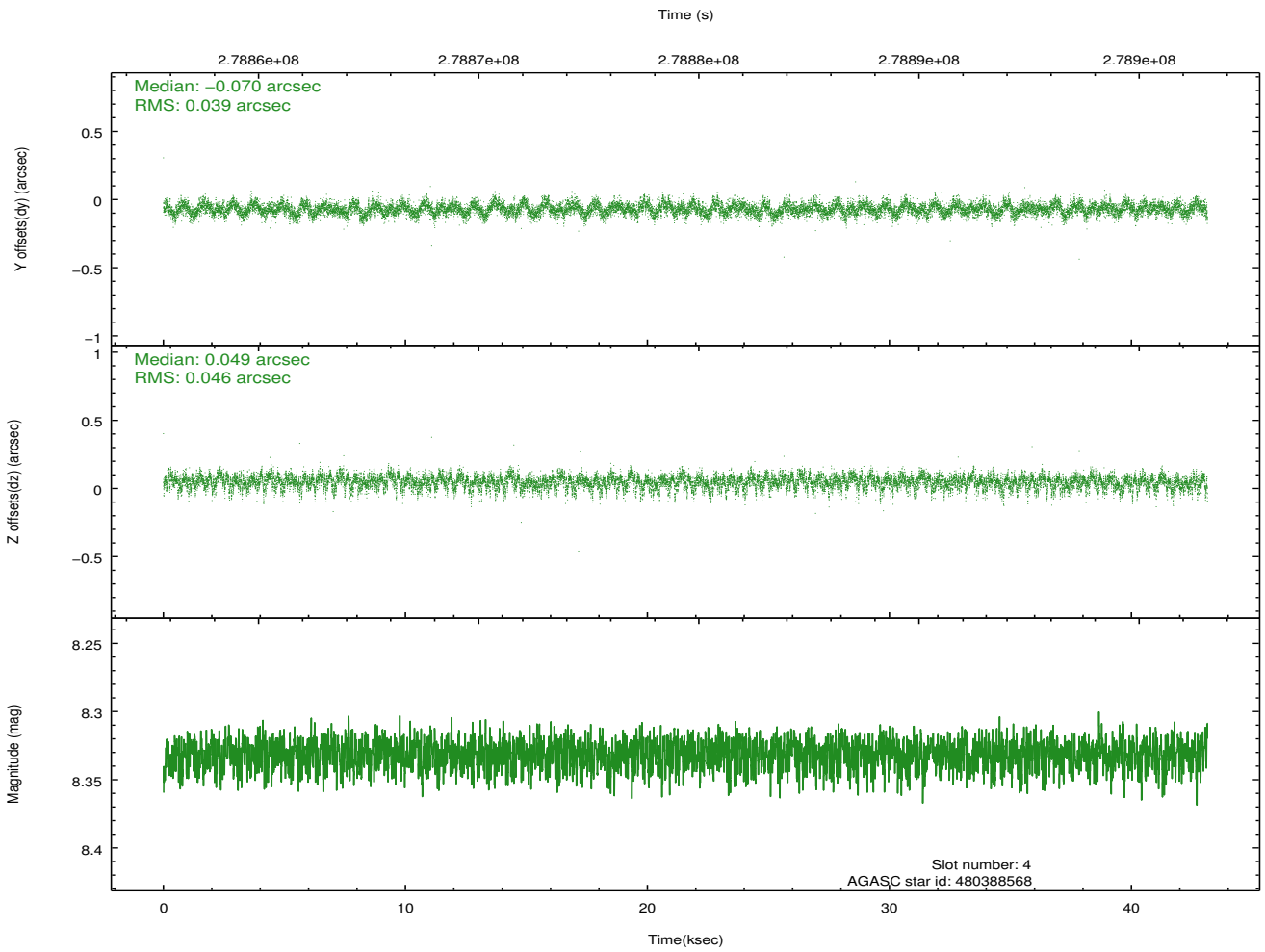
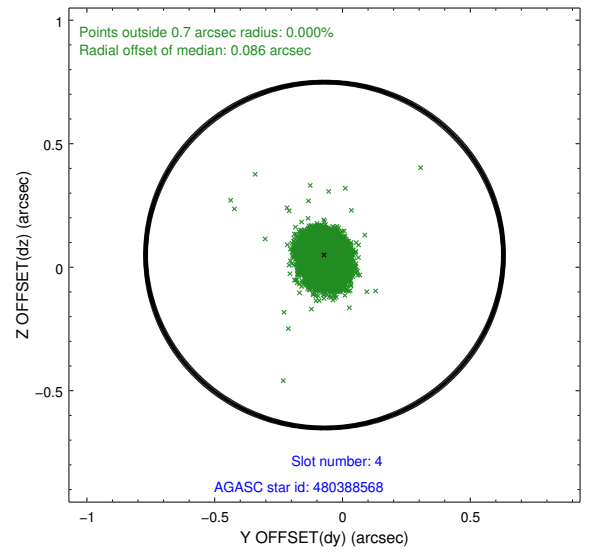
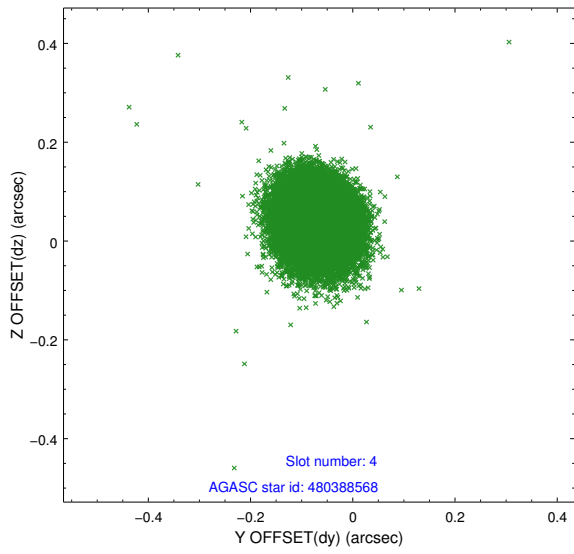
slot	status	id	mag	n_pts	med_dy	med_dz	dr1	dr2	ra	dec	mean_y	mean_z
0	FID	ACIS-S-2	7.11	10522	-0.010	-0.034	0.010	0.029	0.000000	0.000000	-761.16	-1732.41
1	FID	ACIS-S-5	7.24	10522	-0.082	-0.001	0.034	0.050	0.000000	0.000000	-1814.38	169.58
2	FID	ACIS-S-6	7.35	10523	0.068	0.042	0.033	0.063	0.000000	0.000000	400.47	813.56
3	GUIDE	480387560	8.63	21041	0.039	0.000	0.072	0.117	3.486116	59.428342	1724.10	-2292.15
4	GUIDE	480388568	8.33	21038	-0.070	0.049	0.063	0.104	3.952528	59.440255	1086.49	-1722.57
5	GUIDE	480382592	8.58	21036	-0.062	0.051	0.084	0.128	3.877912	59.161998	1886.25	-1103.97
6	GUIDE	480393824	9.30	21018	0.089	-0.077	0.103	0.166	6.515624	59.105010	-1513.13	2391.13
7	GUIDE	480388656	8.91	20968	-0.001	-0.025	0.076	0.124	6.593066	59.181927	-1805.33	2282.39

2.4 Star Slots

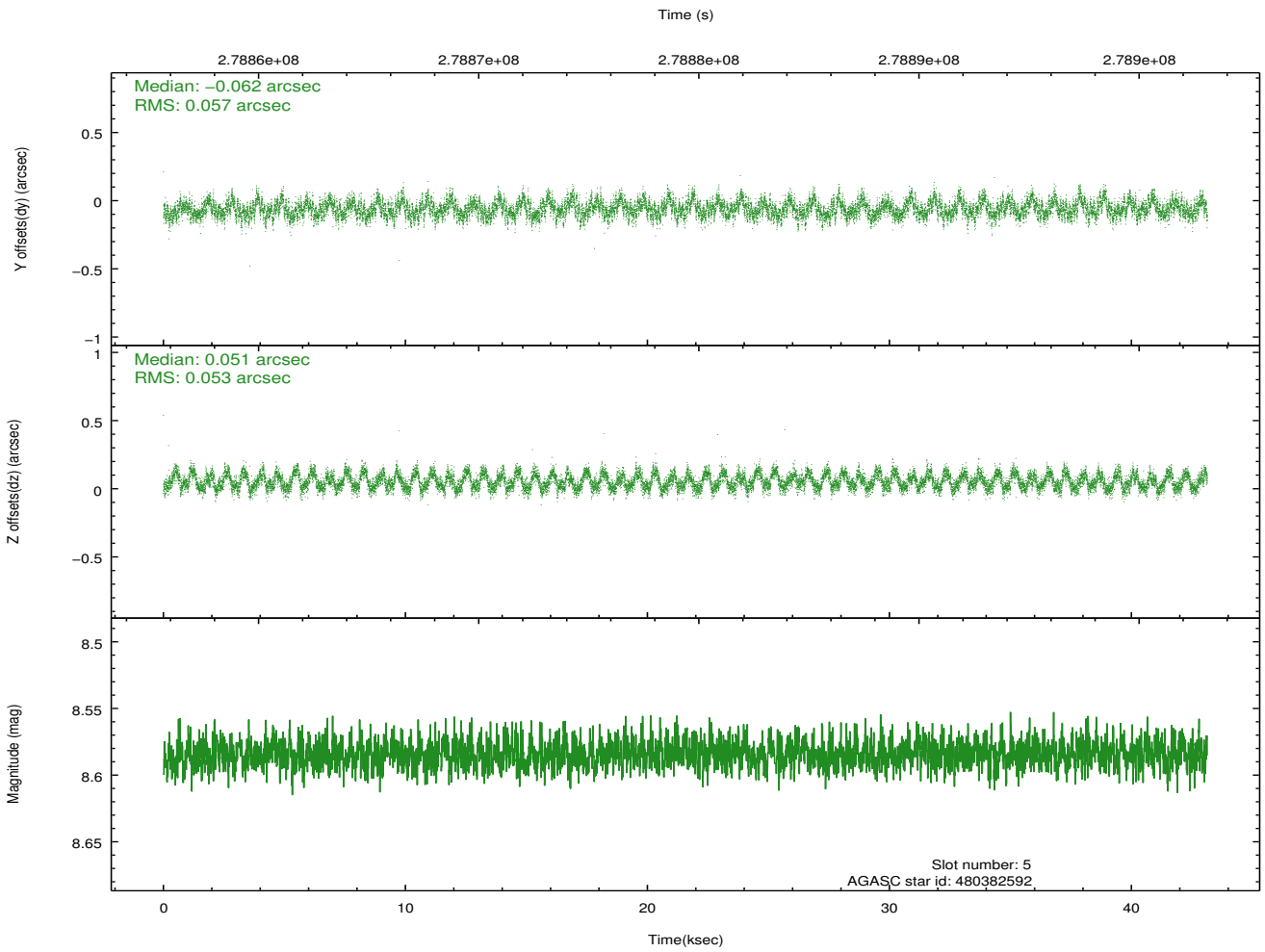
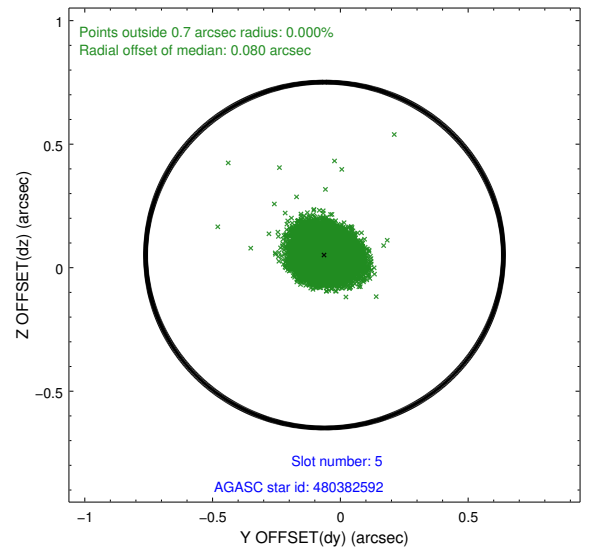
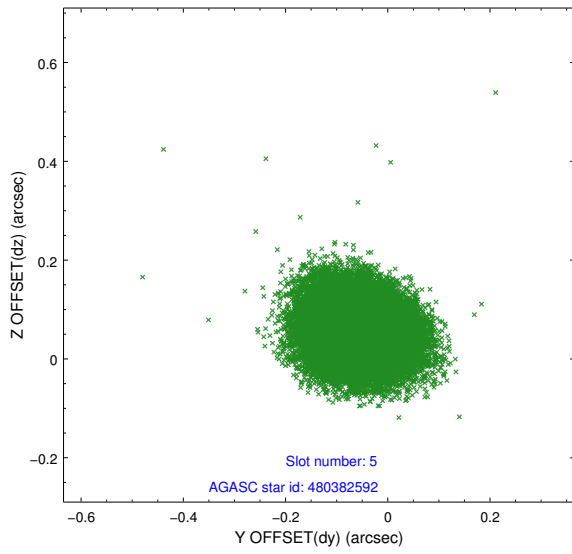
2.4.1 Slot 3



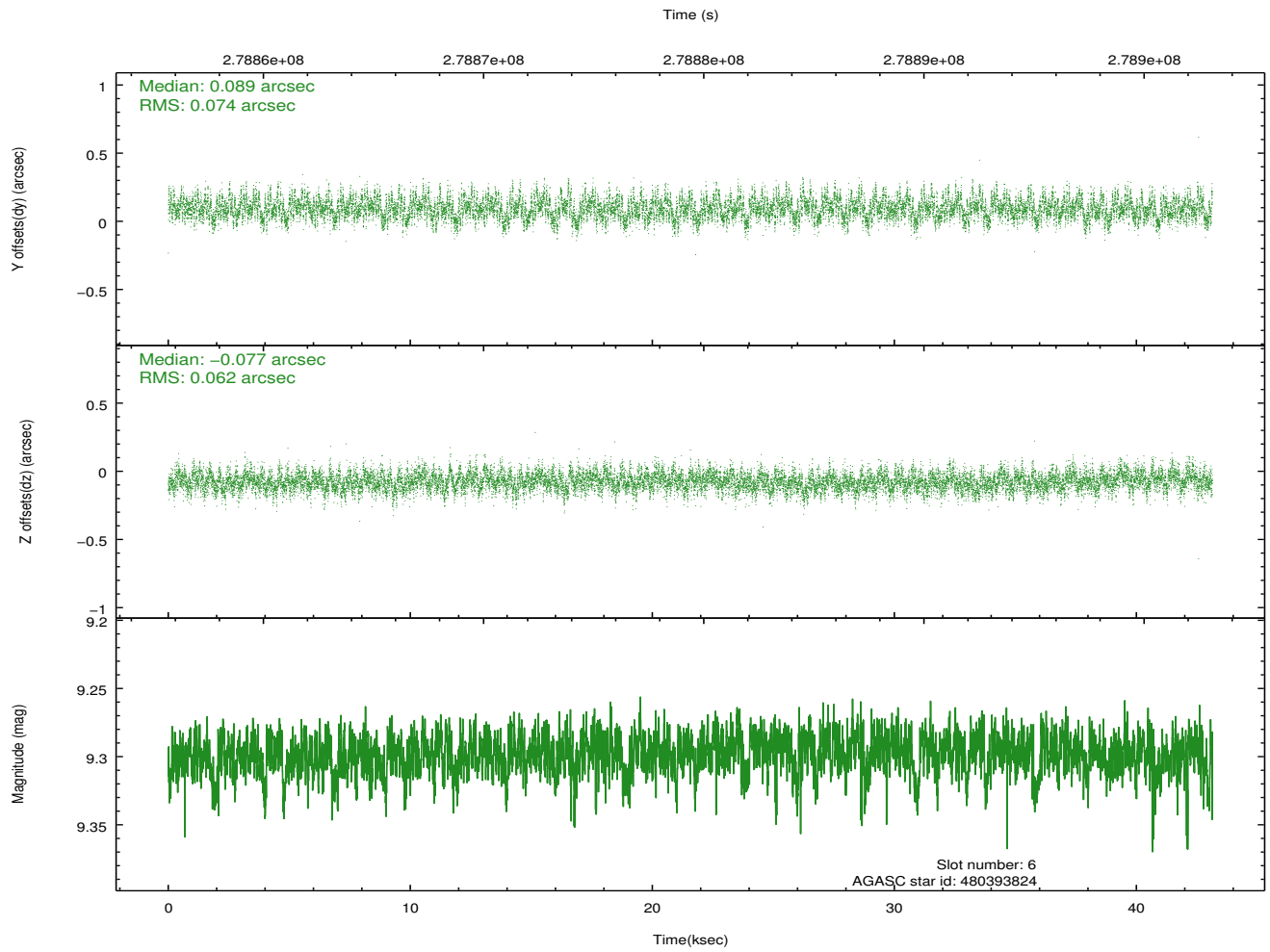
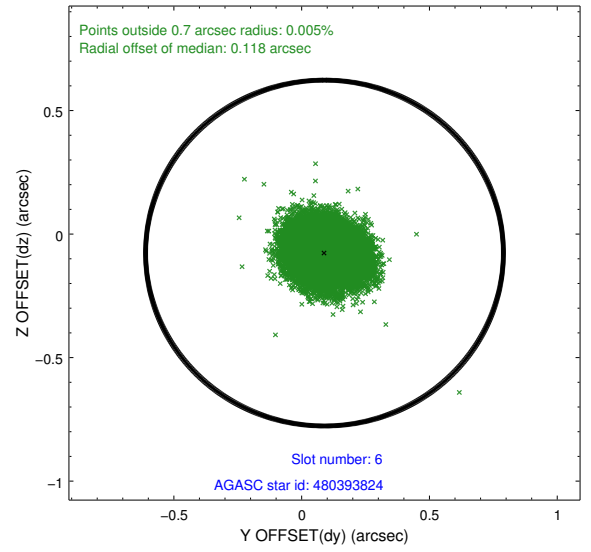
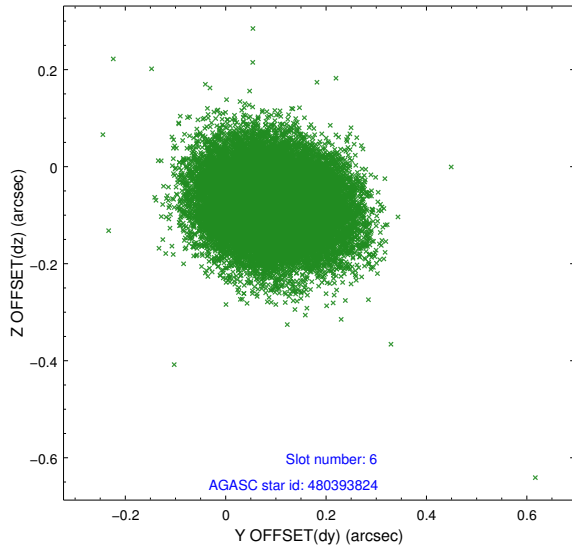
2.4.2 Slot 4



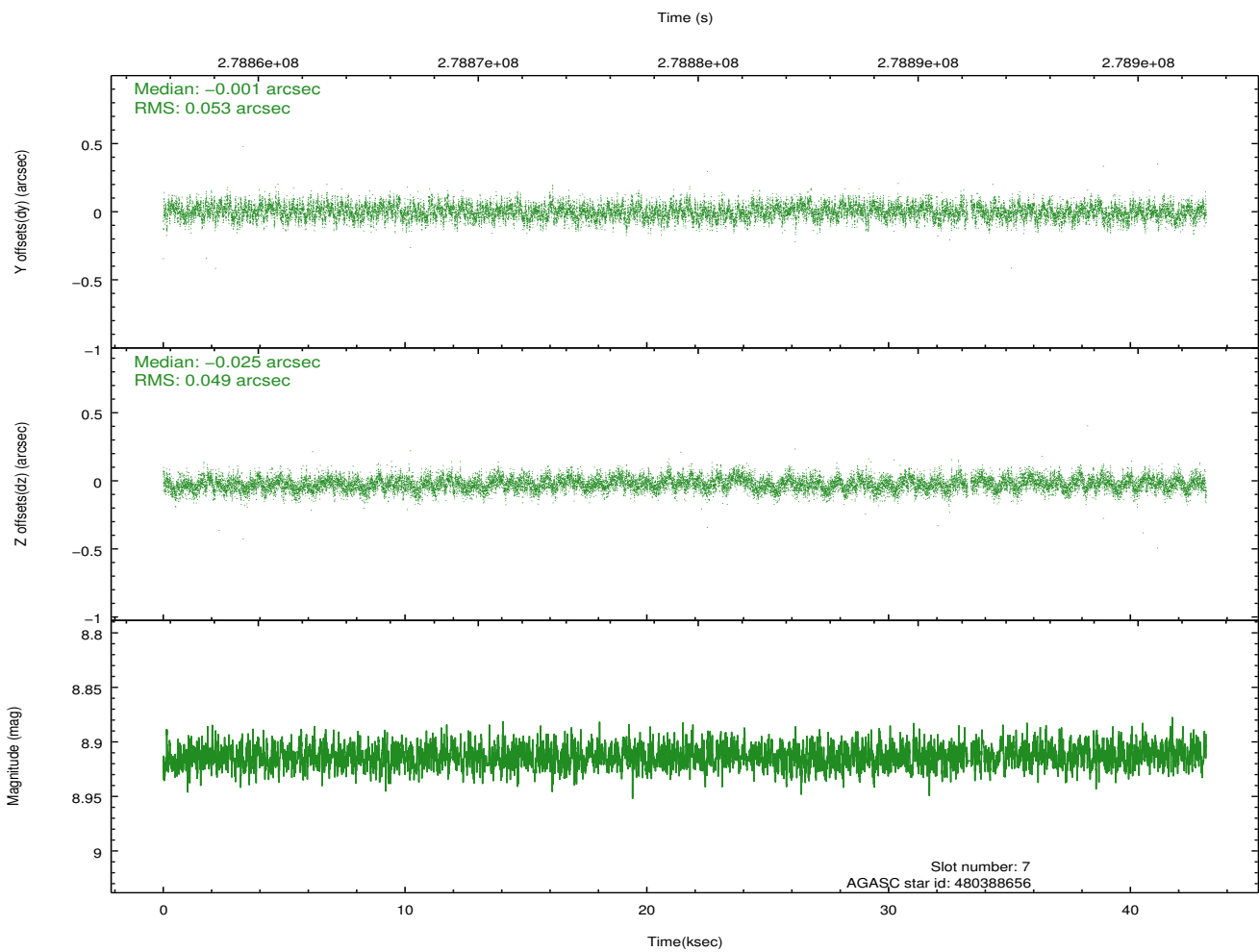
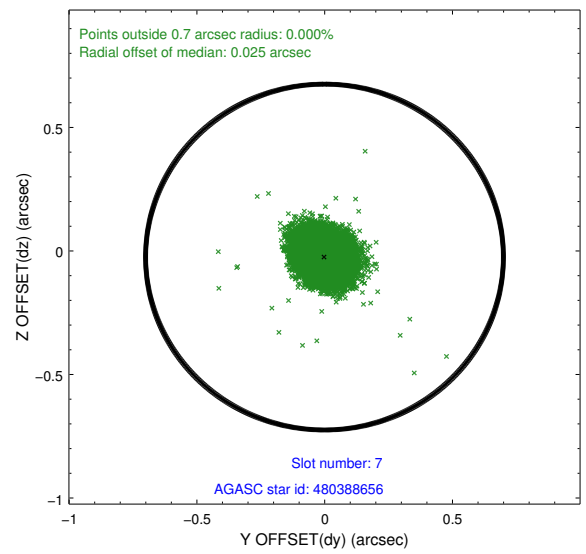
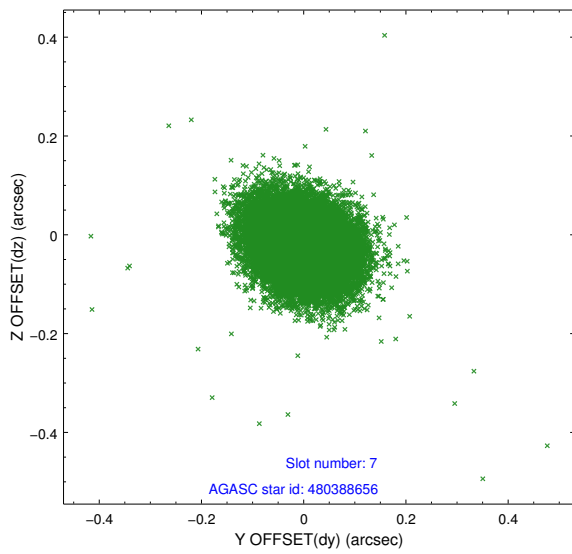
2.4.3 Slot 5



2.4.4 Slot 6

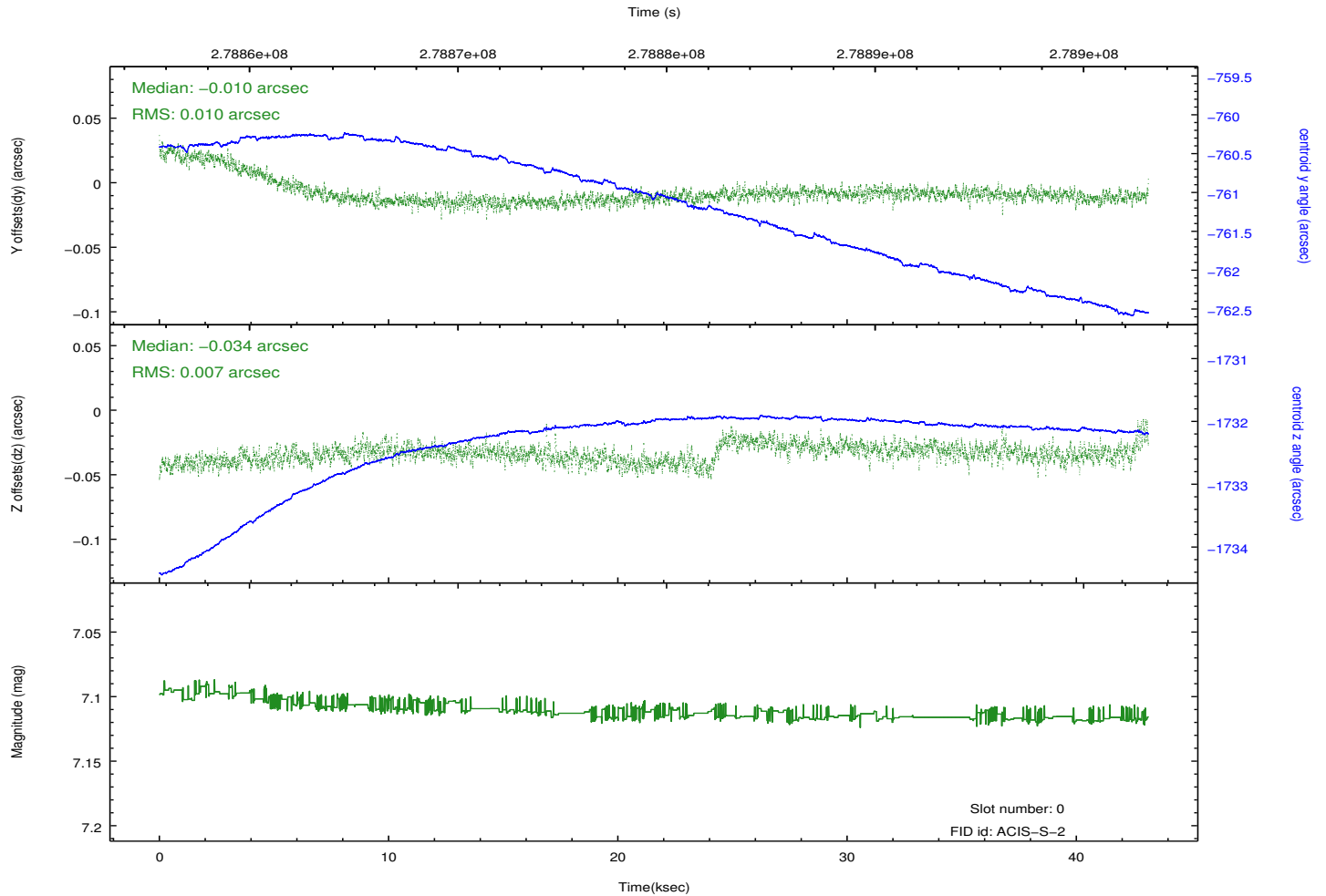
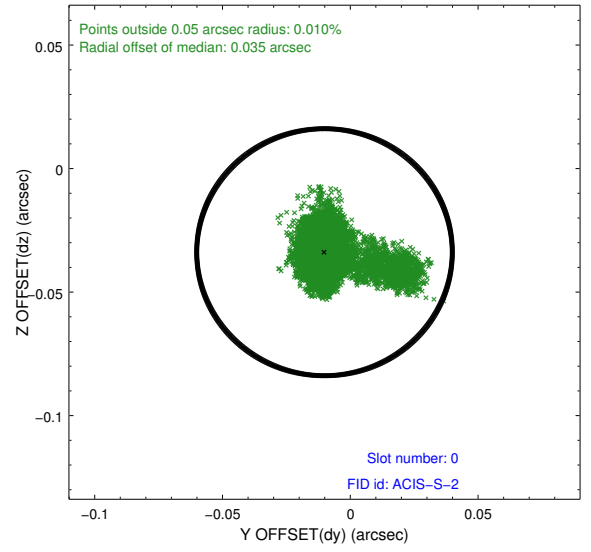
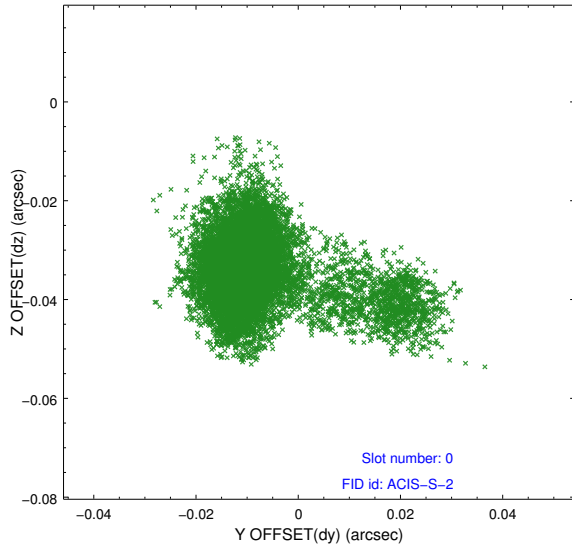


2.4.5 Slot 7

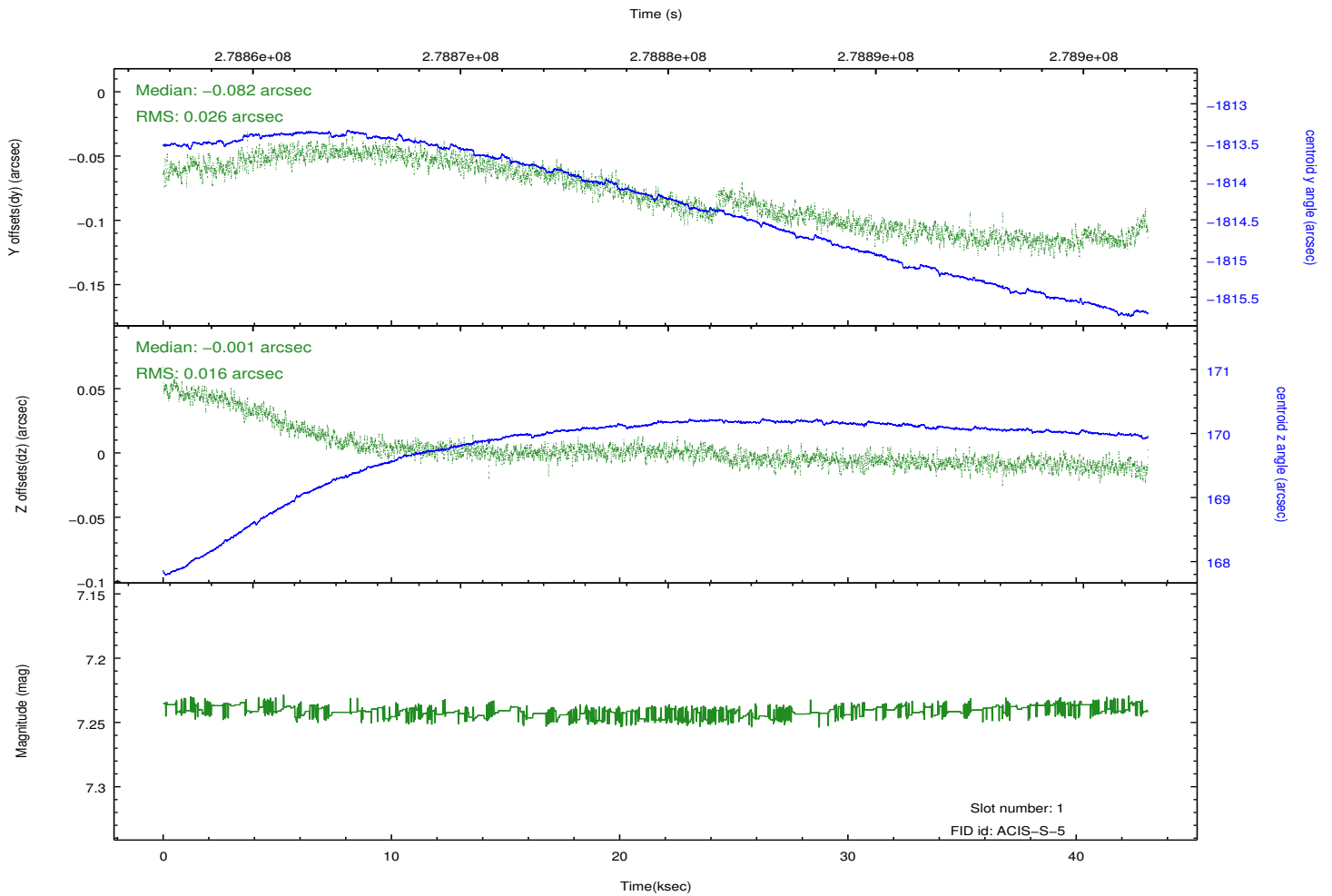
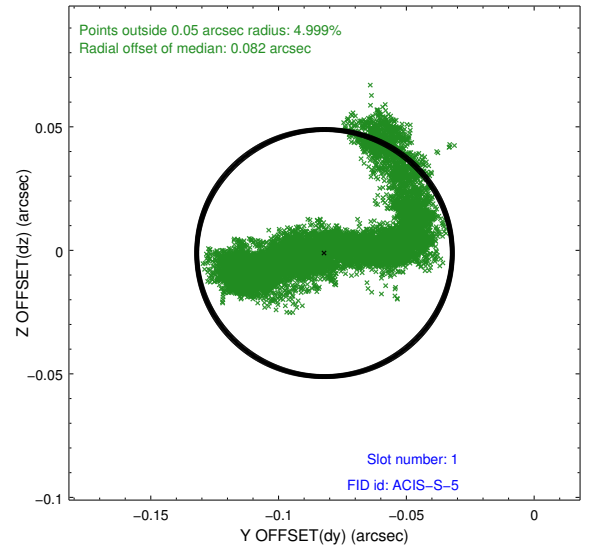
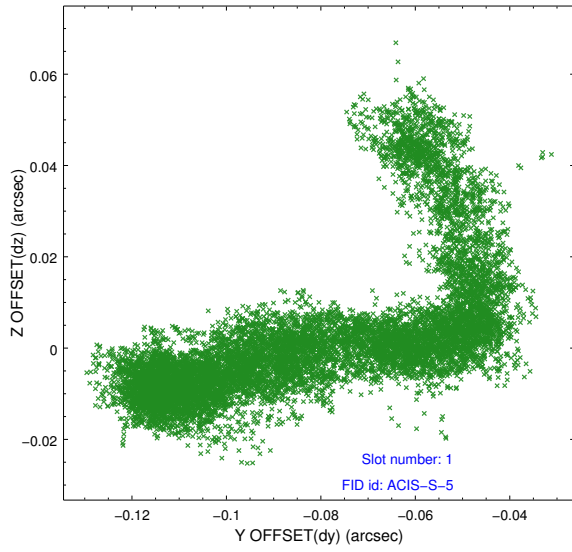


2.5 FID Slots

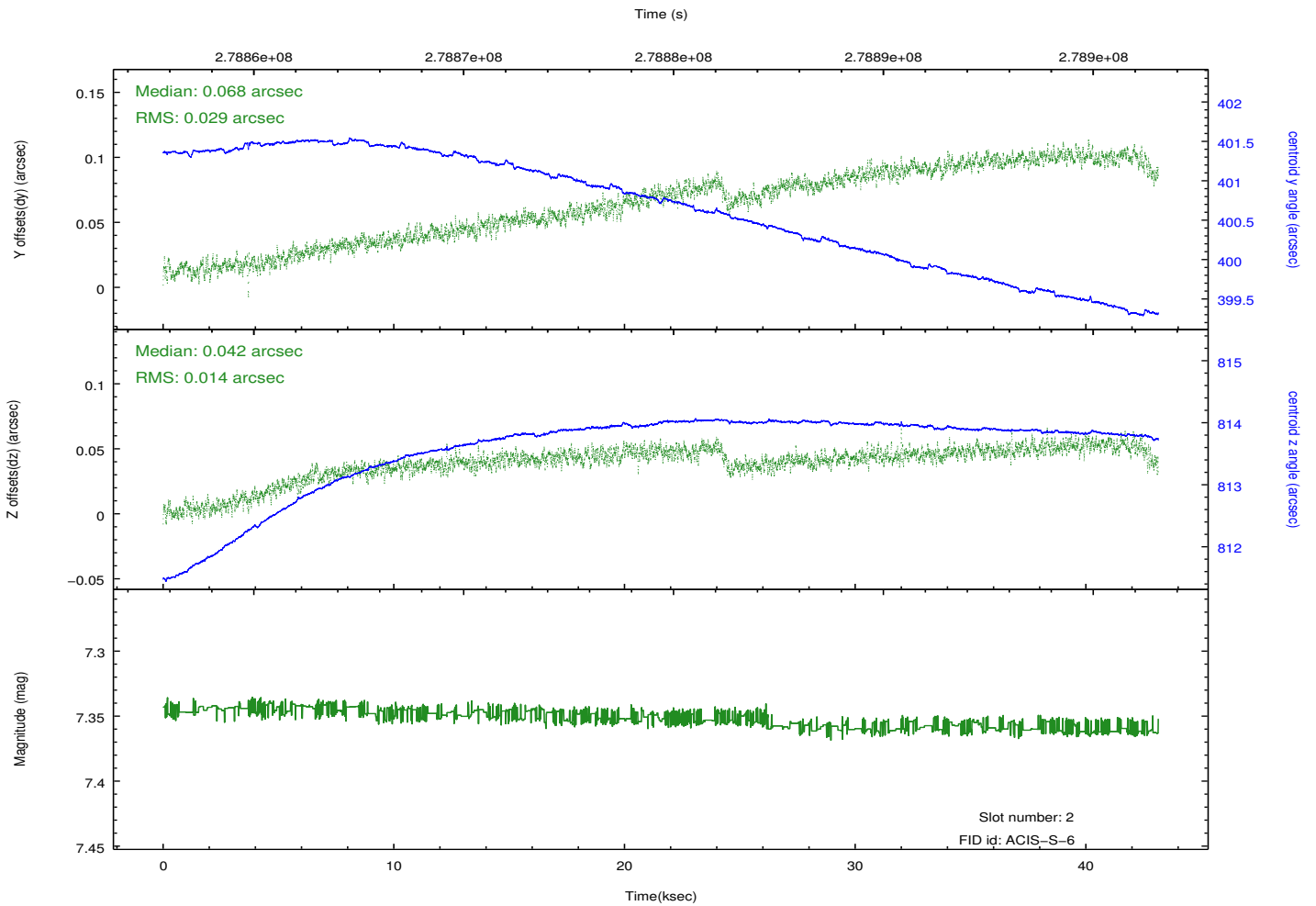
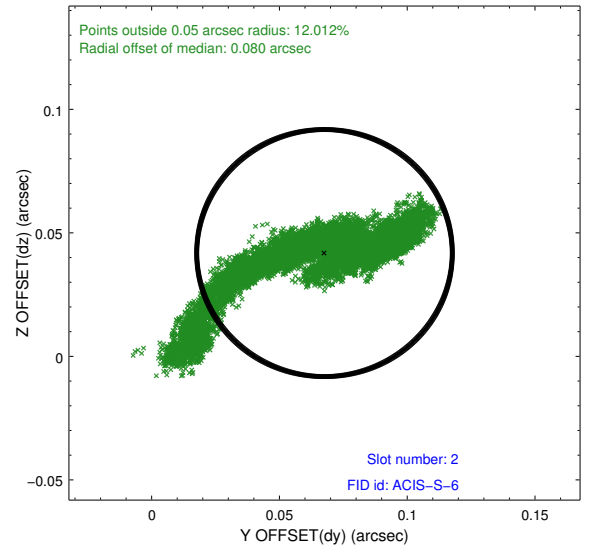
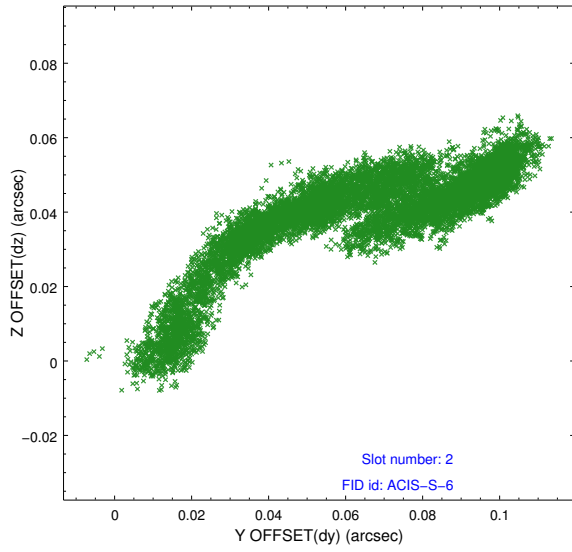
2.5.1 Slot 0



2.5.2 Slot 1



2.5.3 Slot 2



A Summary

A.1 Status

V&V Scientist	Beth Sundheim
V&V Date (YYYY-MM-DD)	2012.04.13
V&V Edition	1
V&V Disposition and Status	OK
V&V Charge Time	43.1359998

A.2 Comments