

V&V Reference Report

L2 ASCDS Version : 8.4.5

Observation 72 - L2 Version 6
Chandra X-Ray Center

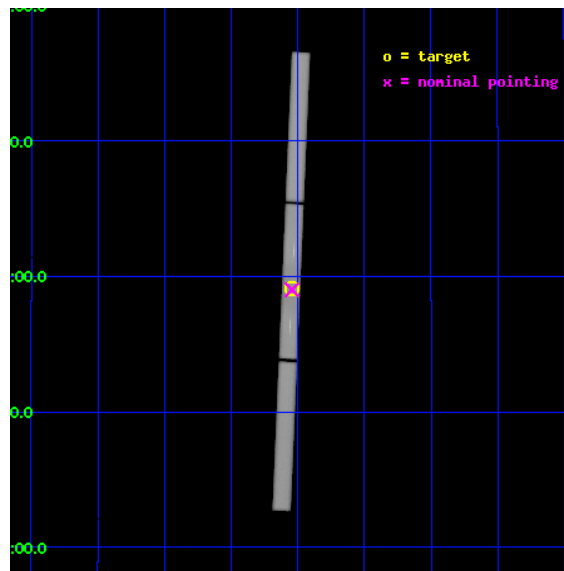
L2 Processing Date : Sep 5 2012

Contents

1	Front	2
2	OBI	3
2.1	OBI	3
2.1.1	Images	3
2.1.2	Parameters	4
2.1.3	Events	4
2.2	Compared Parameters	5
2.3	Aspect	6
2.4	Star Slots	9
2.4.1	Slot 3	9
2.4.2	Slot 4	10
2.4.3	Slot 5	11
2.4.4	Slot 6	12
2.4.5	Slot 7	13
2.5	FID Slots	14
2.5.1	Slot 0	14
2.5.2	Slot 1	15
2.5.3	Slot 2	16
3	Gratings	17
3.1	LETG Arm	17
A	Summary	19
A.1	Status	19
A.2	Comments	19

1 Front

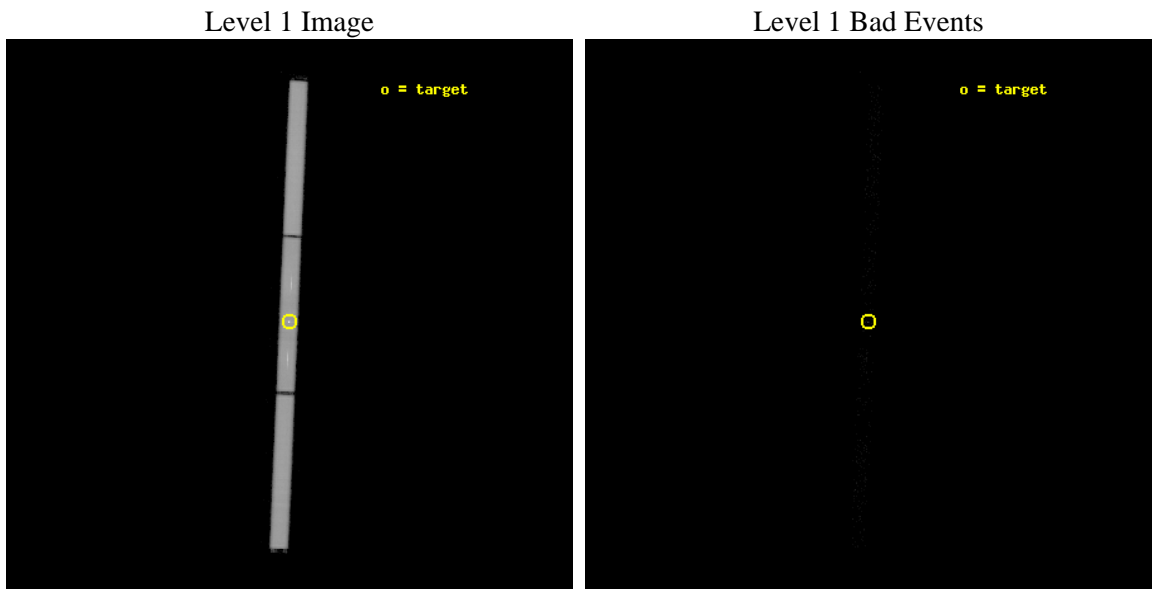
seq_num	300034	Sequence number
obs_id	72	Observation id
title	MULTIWAVELENGTH TOO OBSERVATIONS OF BRIGHT NOVAE IN OUTBURST	Propo
observer	Regents' Professor Sumner Starrfield	Principal investigator
object	V1494 Aql	Source name
ra_targ	290.772	Observer's specified target RA [deg]
dec_targ	4.956	Observer's specified target Dec [deg]
ra_nom	290.77198597414	Nominal RA [deg]
dec_nom	4.9510877252236	Nominal Dec [deg]
roll_nom	272.38833896182	Nominal Roll [deg]
revision	6	Processing version of data
ontime	18234.750687808	[s]
livetime	18068.981343595	Ontime multiplied by DTCOR
l2events	1548348	Number of level 2 events



2 OBI

2.1 OBI

2.1.1 Images



2.1.2 Parameters

obi_num	1	Obi number	sched_exp_time	18160.745000	[s] Scheduled observation exposure time
ascdsver	8.4.5	Processing system revision	ontime	18234.750687808	[s]
caldsver	4.5.1.1	 	l1events	1983609	Number of level 1 events
date	2012-09-05T15:07:22	Date and time of file creation			
revision	5	Processing version of data			

2.1.3 Events

Level 1 Events

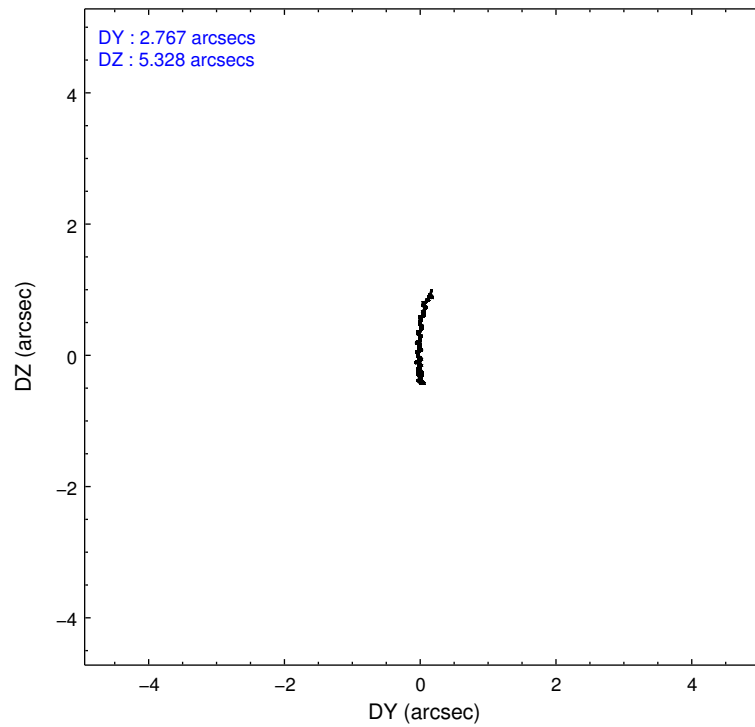
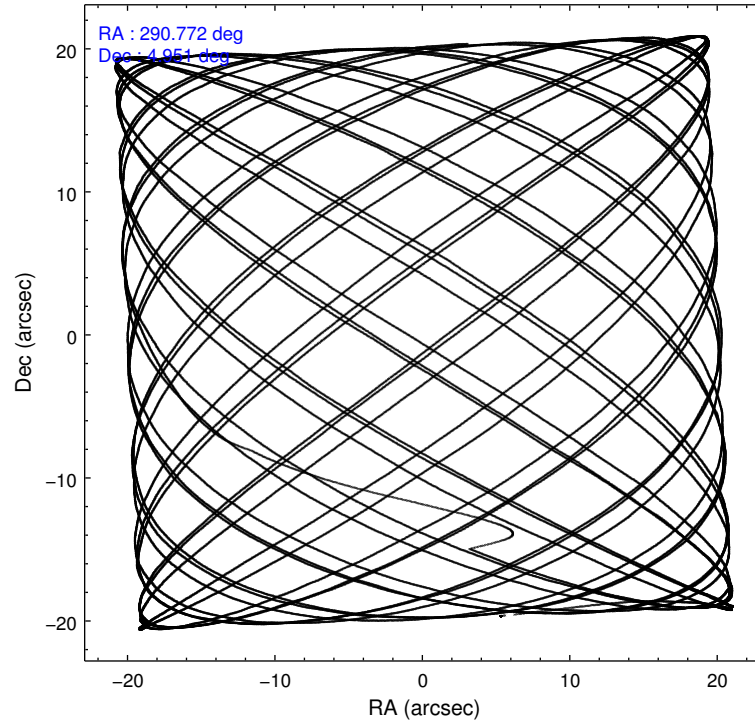
	segment 1	segment 2	segment 3
level 1 events	702972	649801	630836
rejected events	24686	23083	23679
rejected %	3%	3%	3%

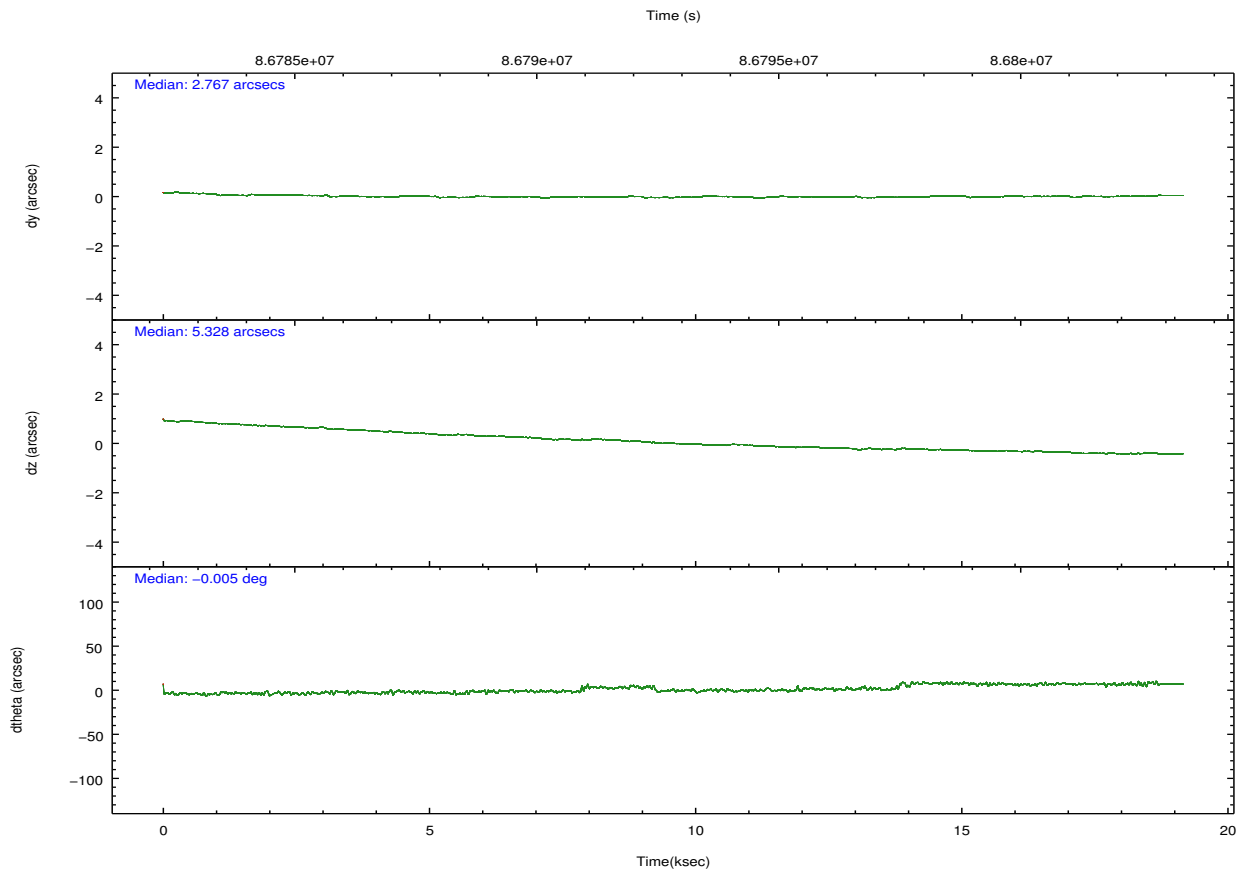
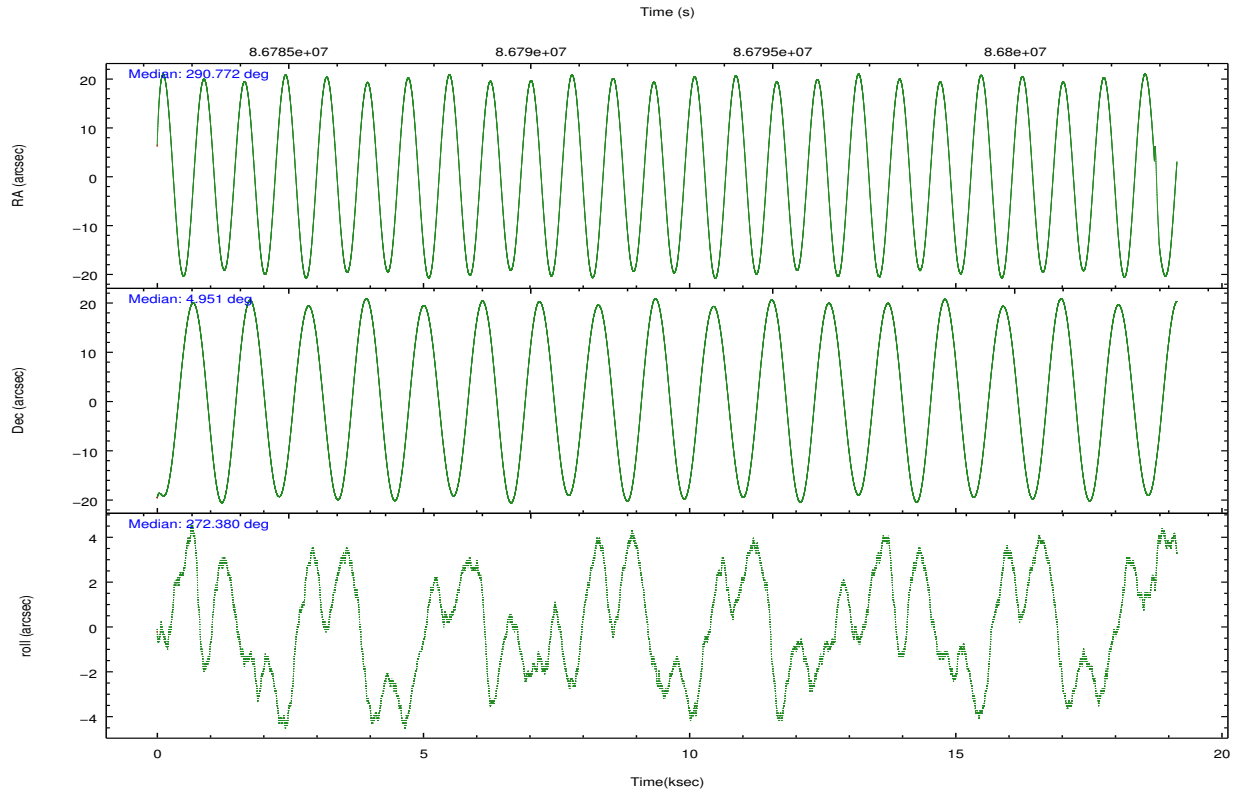
2.2 Compared Parameters

Parameter	Planned	Actual
Instrument	HRC	HRC
Detector	HRC-S	HRC-S
Grating	LETG	LETG
Data mode	OBSERVING	OBSERVING
Observation mode	POINTING	POINTING
[deg] Pointing RA	290.755498	290.7719859741385
[deg] Pointing Dec	4.974684	4.951087725223561
[deg] Pointing Roll	272.322436	272.3883389618188
[mm] SIM focus pos	-1.429586	-1.428180813131781
[mm] SIM defocus	0.1037507710433287	0.1051558262725154
[mm] SIM translation stage pos	250.455976	250.466033080201
[mm] SIM translation stage offset	0	-0.01005468664627074
[s] Observation start time (MET)	86783332.184000	86782136.375449
Observation start date	2000-10-01T10:27:48	2000-10-01T10:08:56
[s] Observation end time (MET)	86801493.184000	86803177.576242
Observation end date	2000-10-01T15:30:29	2000-10-01T15:59:37

Parameter	Planned	Actual
Obspar format version number	7	7
Obspar file type	PREDICTED	ACTUAL
Obspar update status	NONE	UPDATED

2.3 Aspect



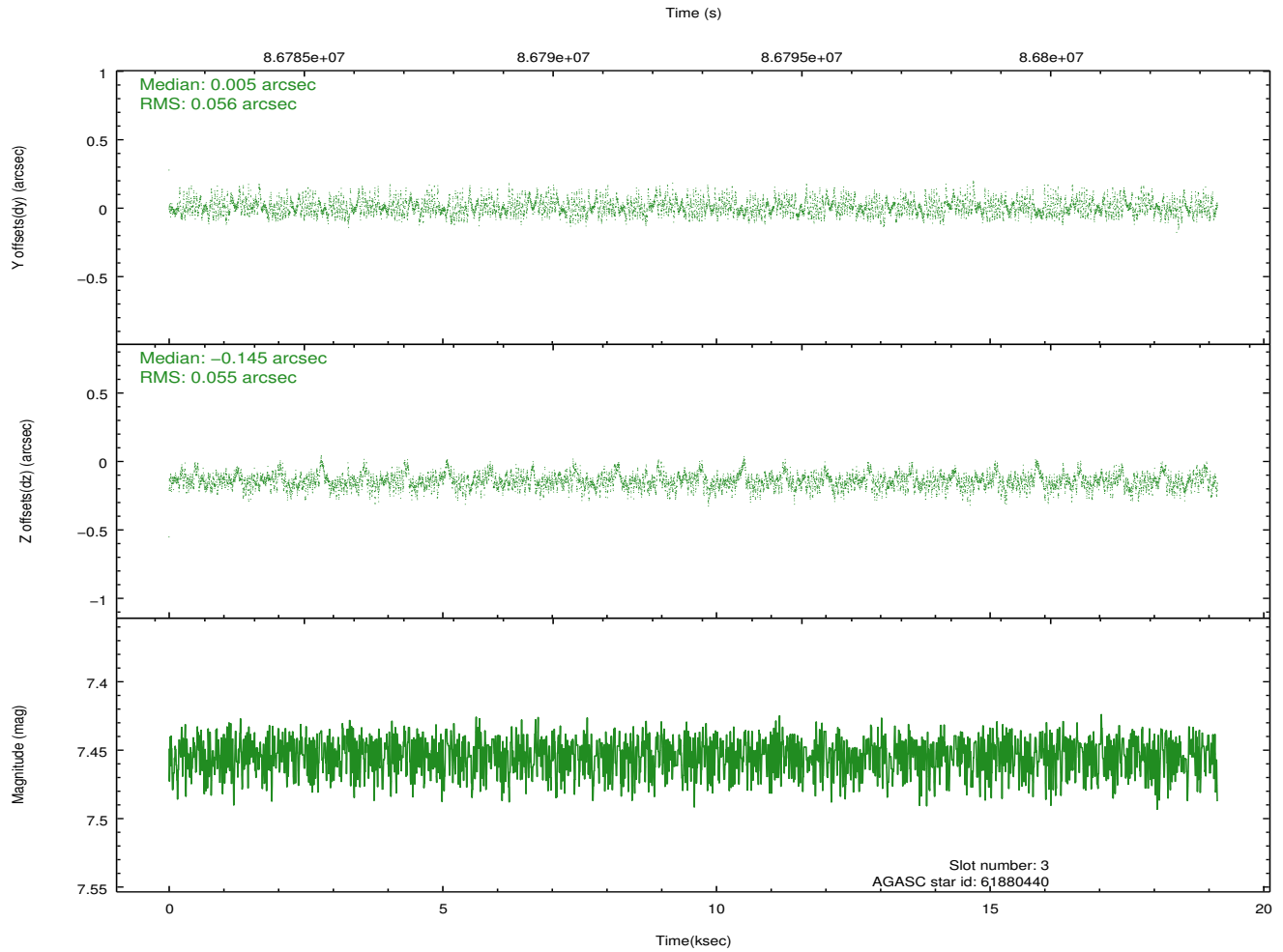
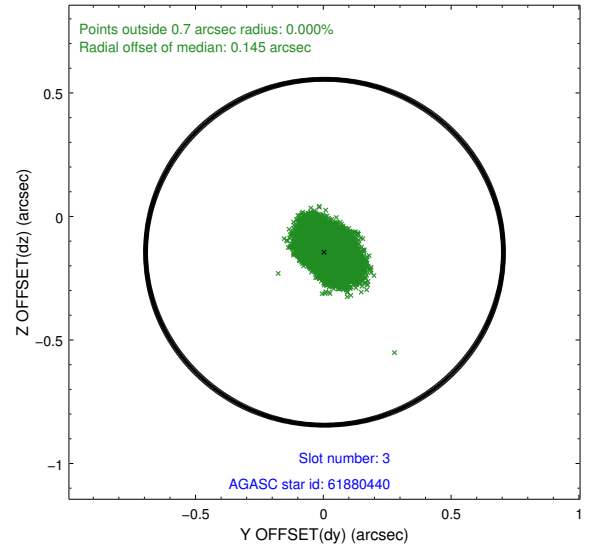
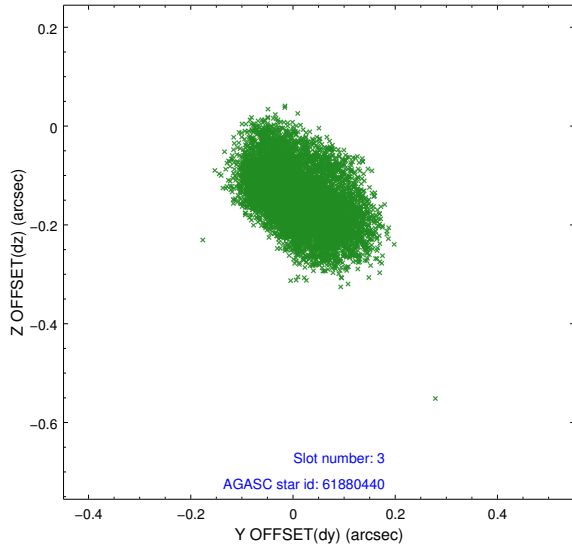


Slot Statistics

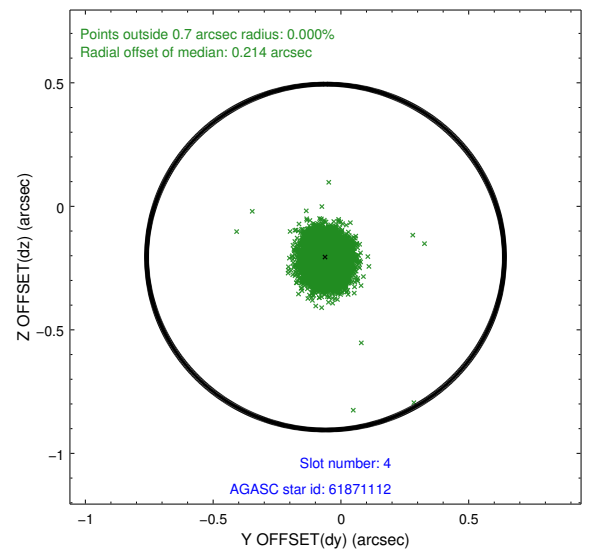
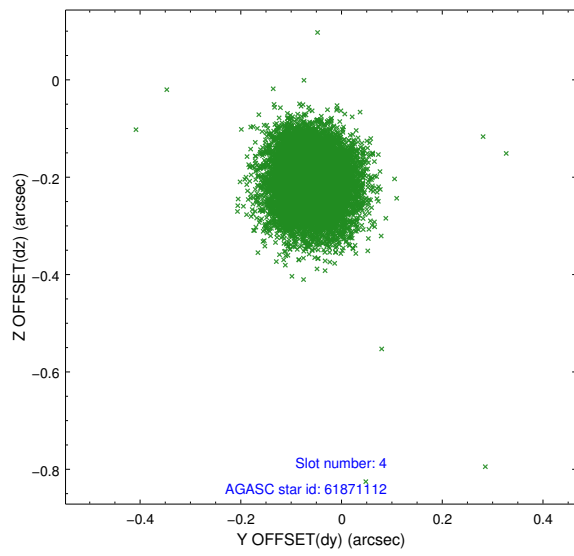
slot	status	id	mag	n_pts	med_dy	med_dz	dr1	dr2	ra	dec	mean_y	mean_z
0	FID	HRC-S-1	7.00	4574	0.109	-0.162	0.019	0.030	0.000000	0.000000	-1156.82	-454.00
1	FID	HRC-S-3	7.02	4572	0.144	-0.041	0.019	0.035	0.000000	0.000000	-1159.79	575.54
2	FID	HRC-S-4	6.97	4571	0.134	-0.091	0.010	0.015	0.000000	0.000000	1241.18	578.33
3	GUIDE	61880440	7.45	9337	0.005	-0.145	0.083	0.139	290.081203	4.777895	609.82	-2445.27
4	GUIDE	61871112	8.70	9333	-0.060	-0.205	0.075	0.119	290.340849	5.123147	-593.80	-1463.91
5	GUIDE	62043480	8.89	9339	0.049	0.131	0.124	0.286	291.375882	4.831705	603.90	2203.37
6	GUIDE	62003248	9.09	9340	0.109	0.183	0.092	0.145	291.268960	4.592557	1449.24	1786.46
7	GUIDE	62021832	9.25	9335	-0.101	0.052	0.086	0.140	290.889874	5.387344	-1464.17	541.99

2.4 Star Slots

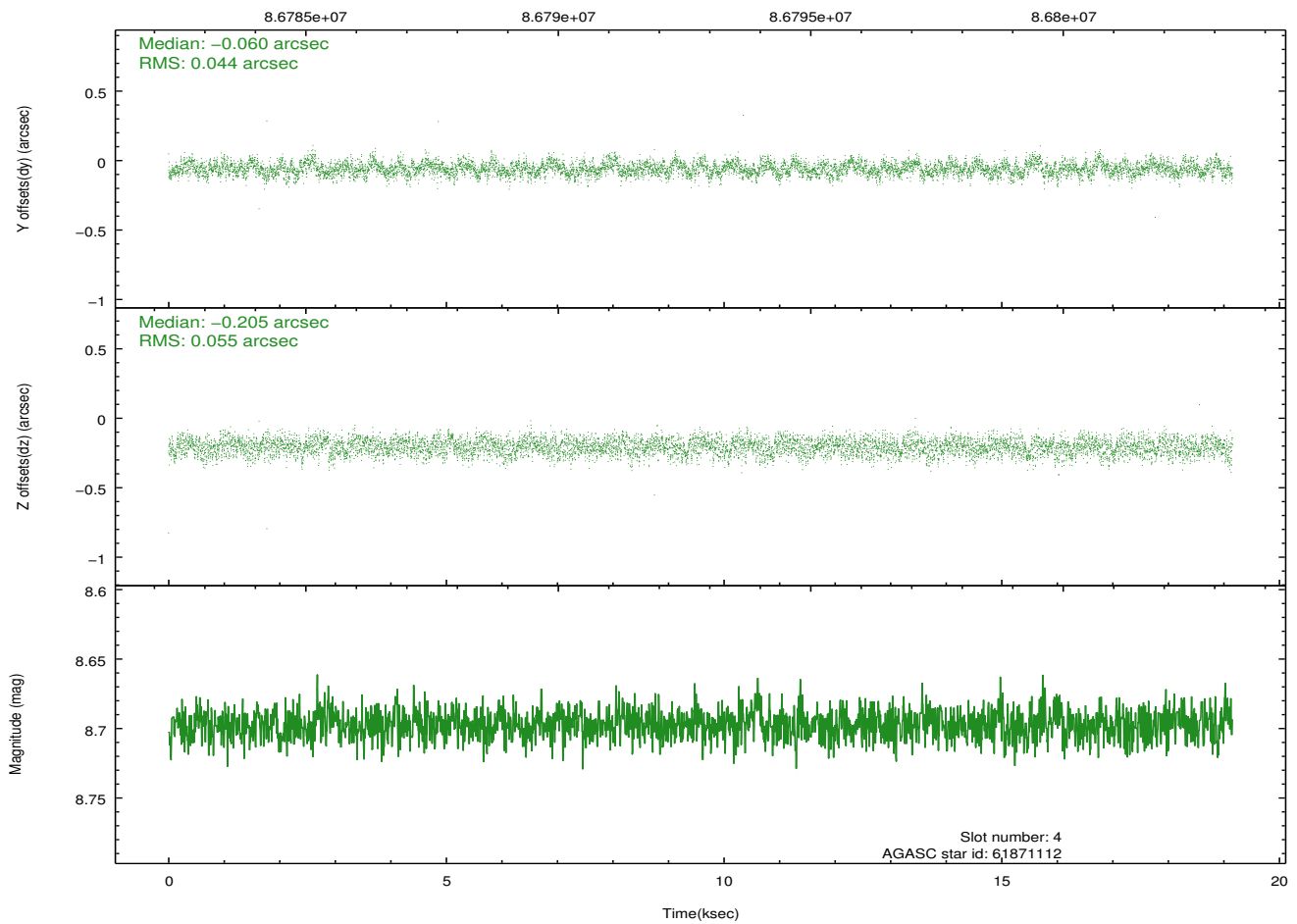
2.4.1 Slot 3



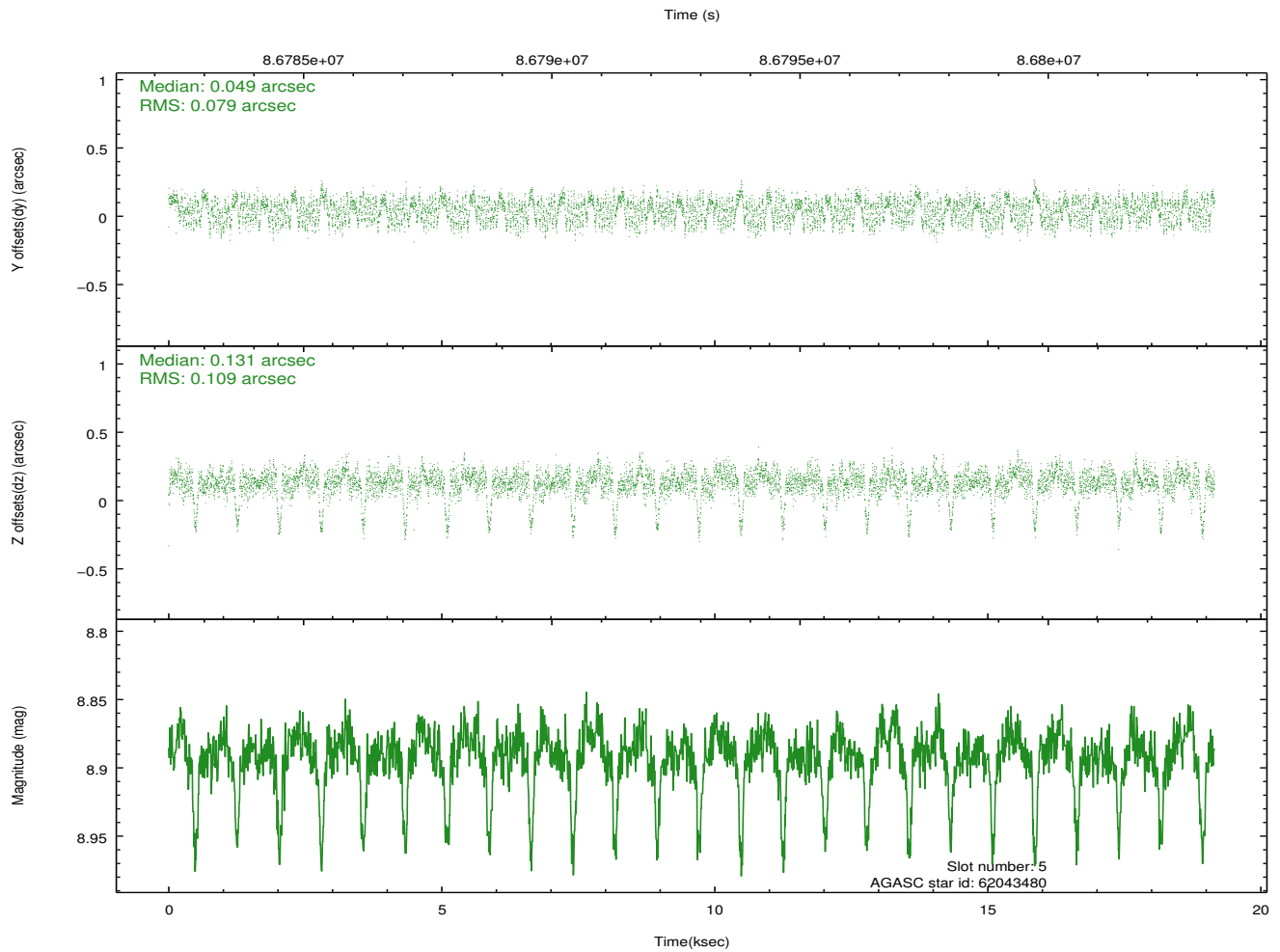
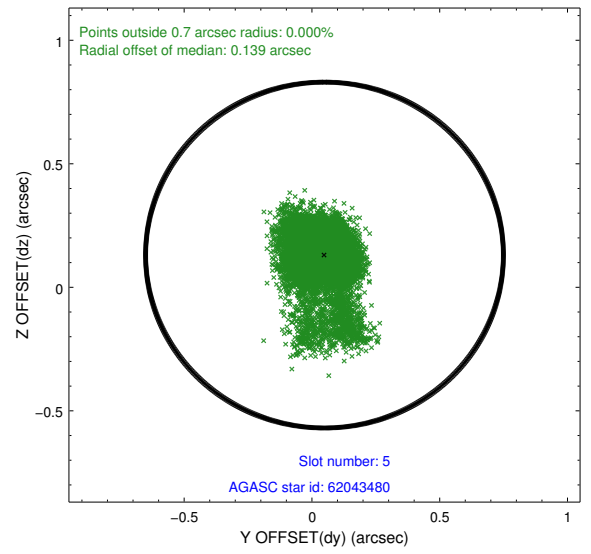
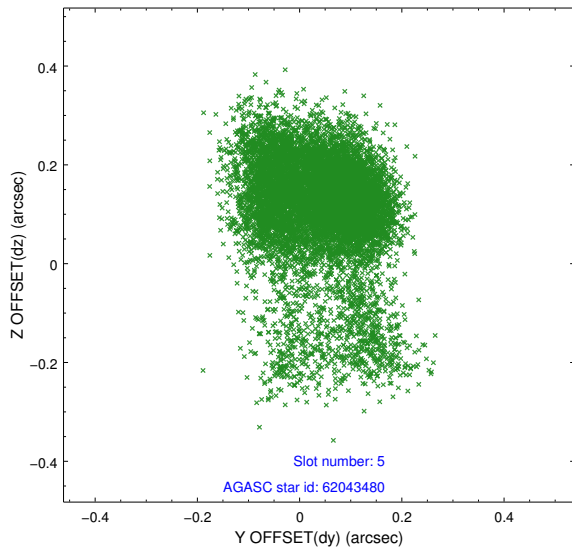
2.4.2 Slot 4



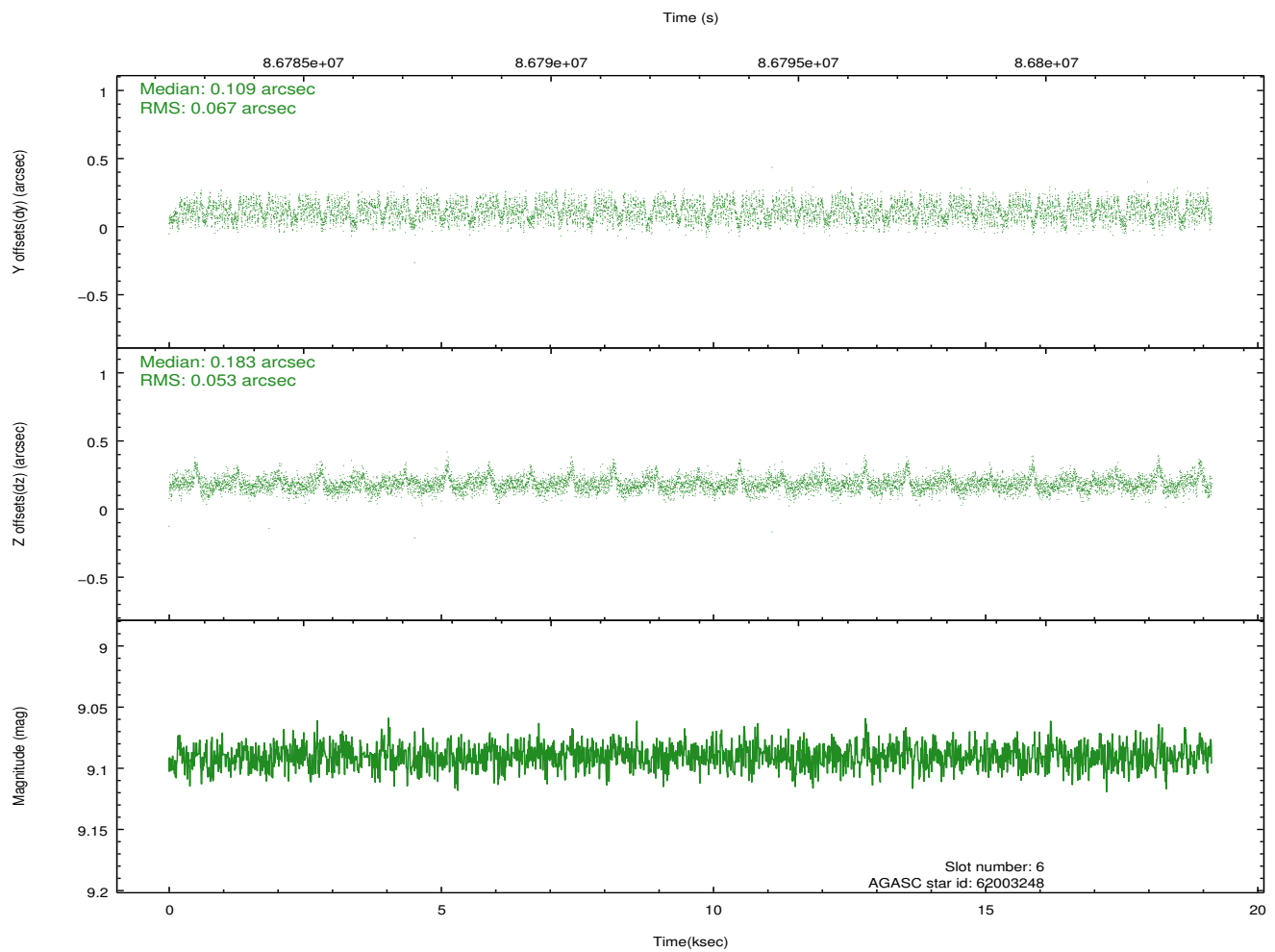
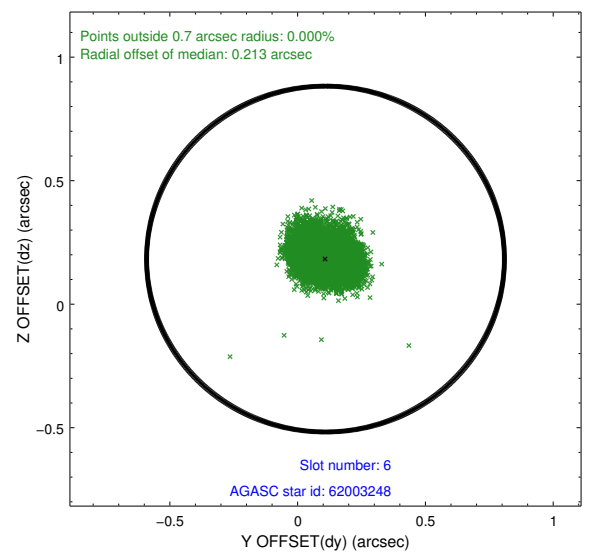
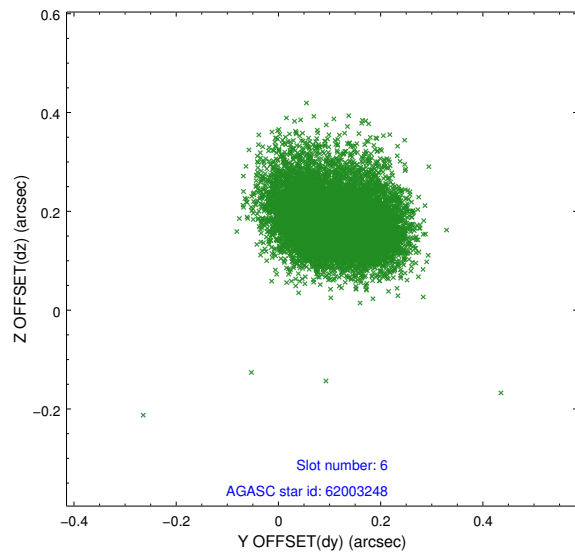
Time (s)



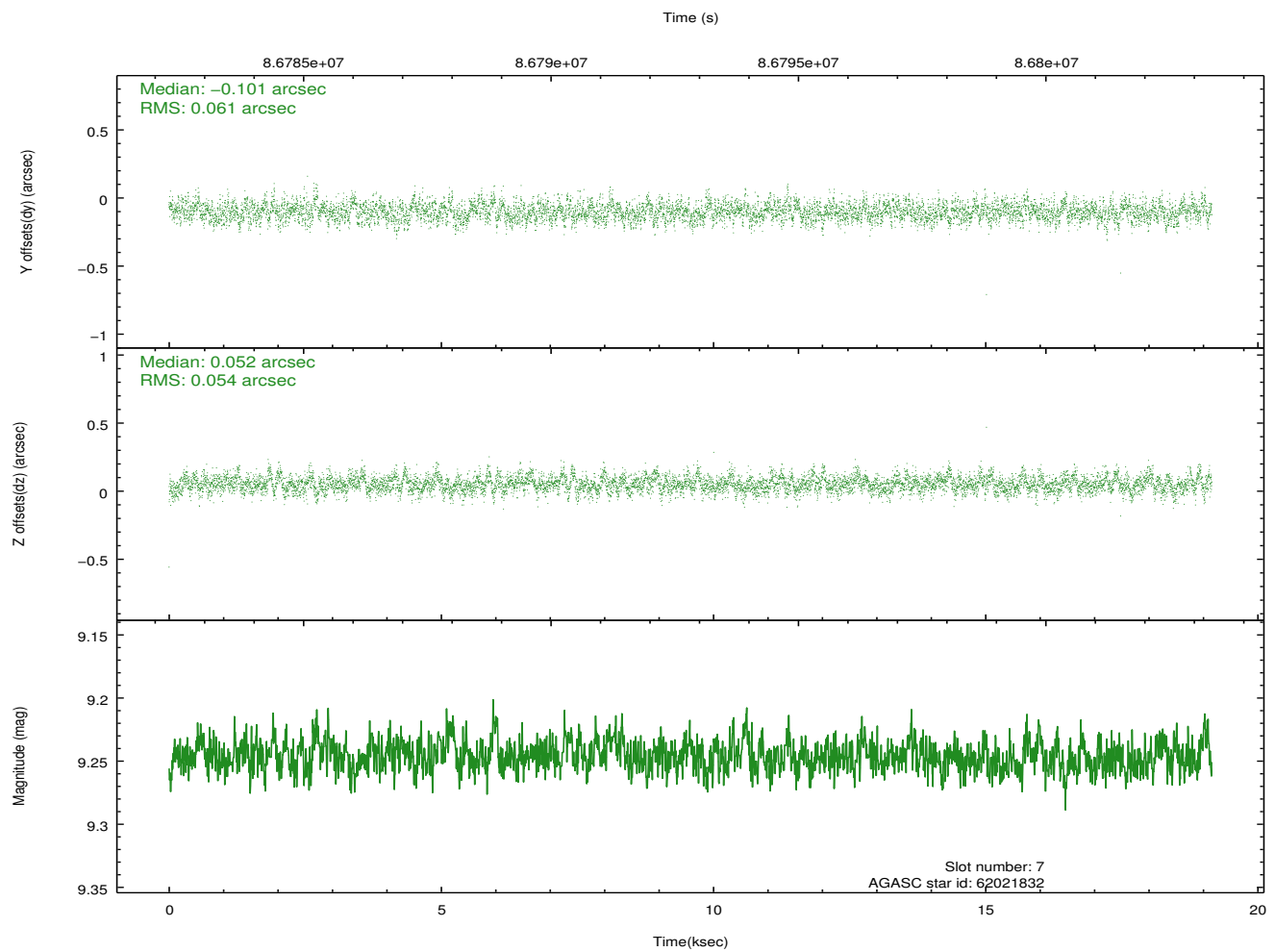
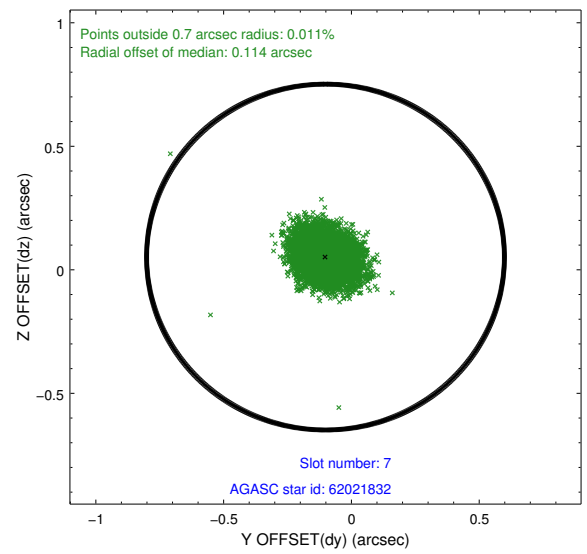
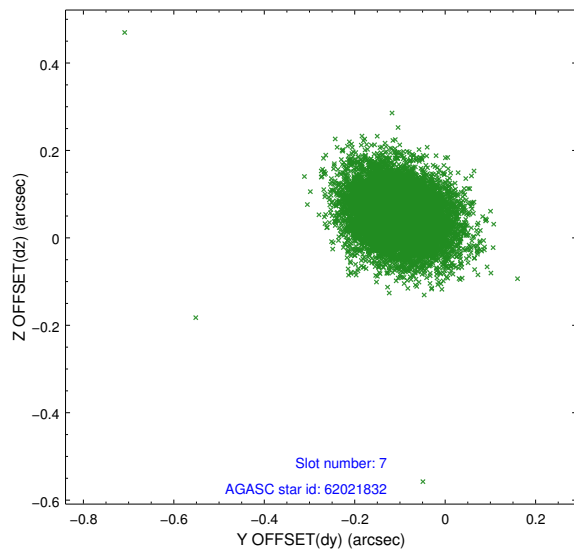
2.4.3 Slot 5



2.4.4 Slot 6

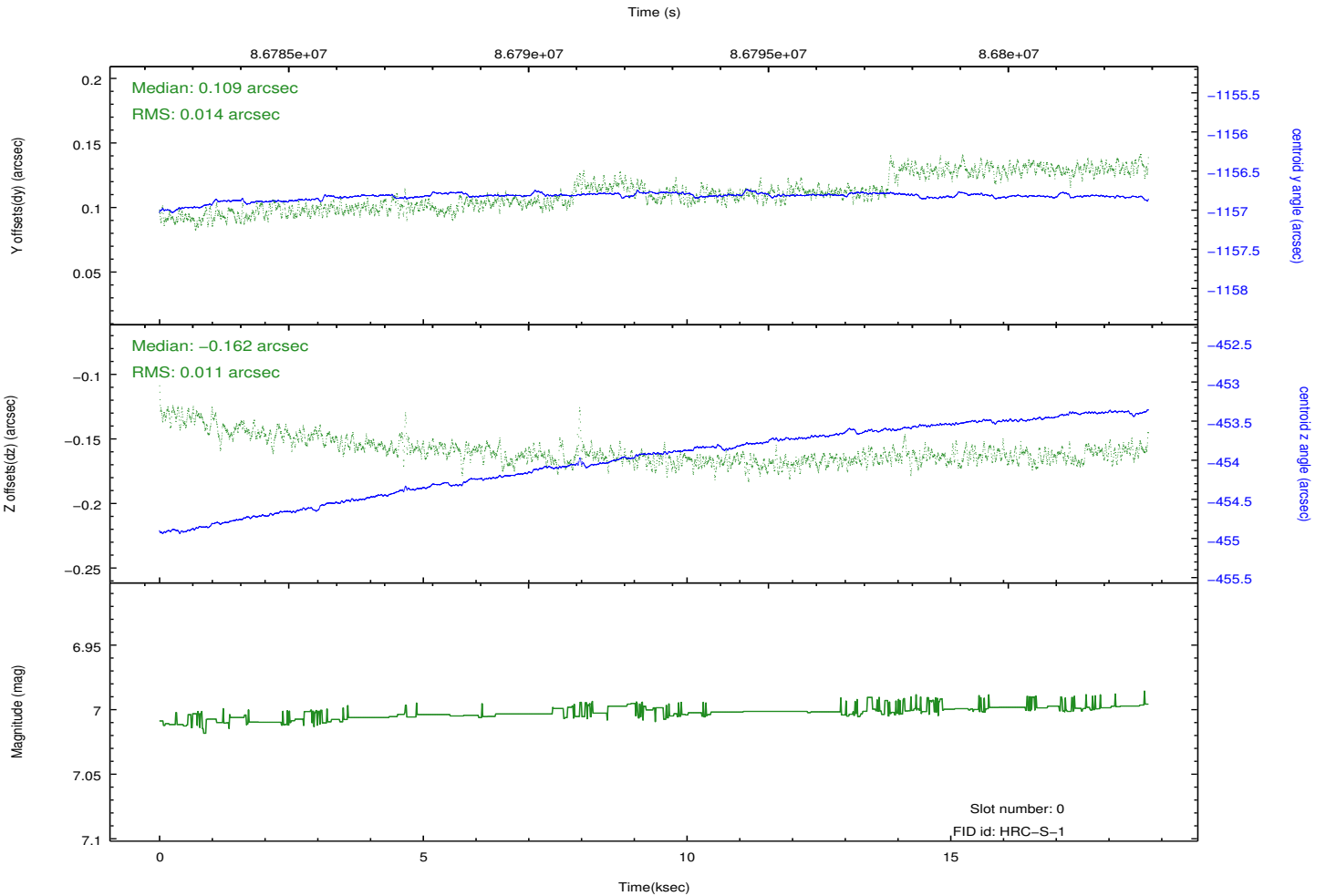
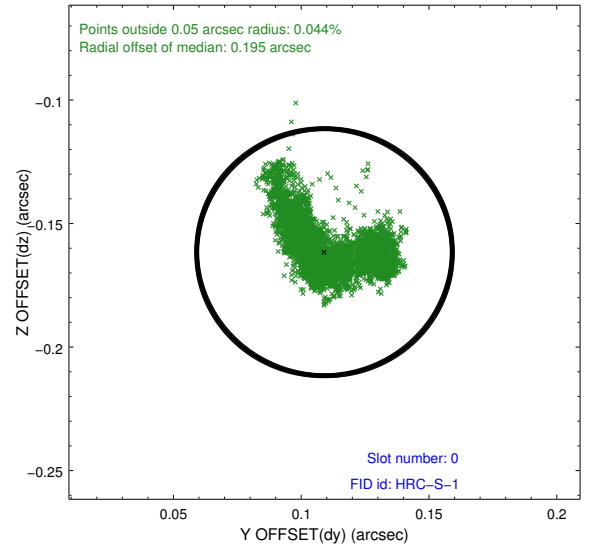
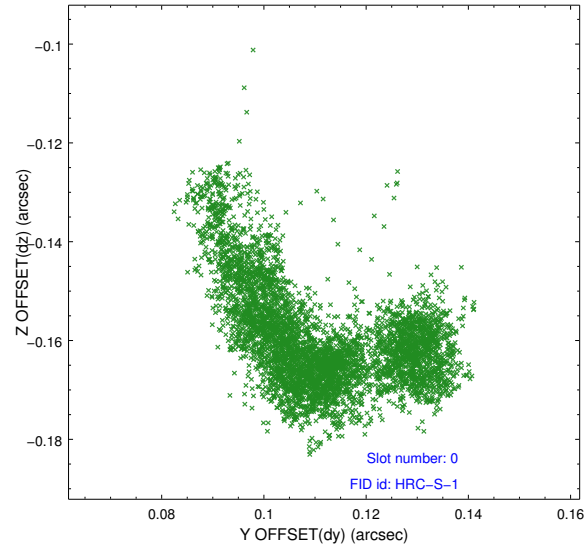


2.4.5 Slot 7

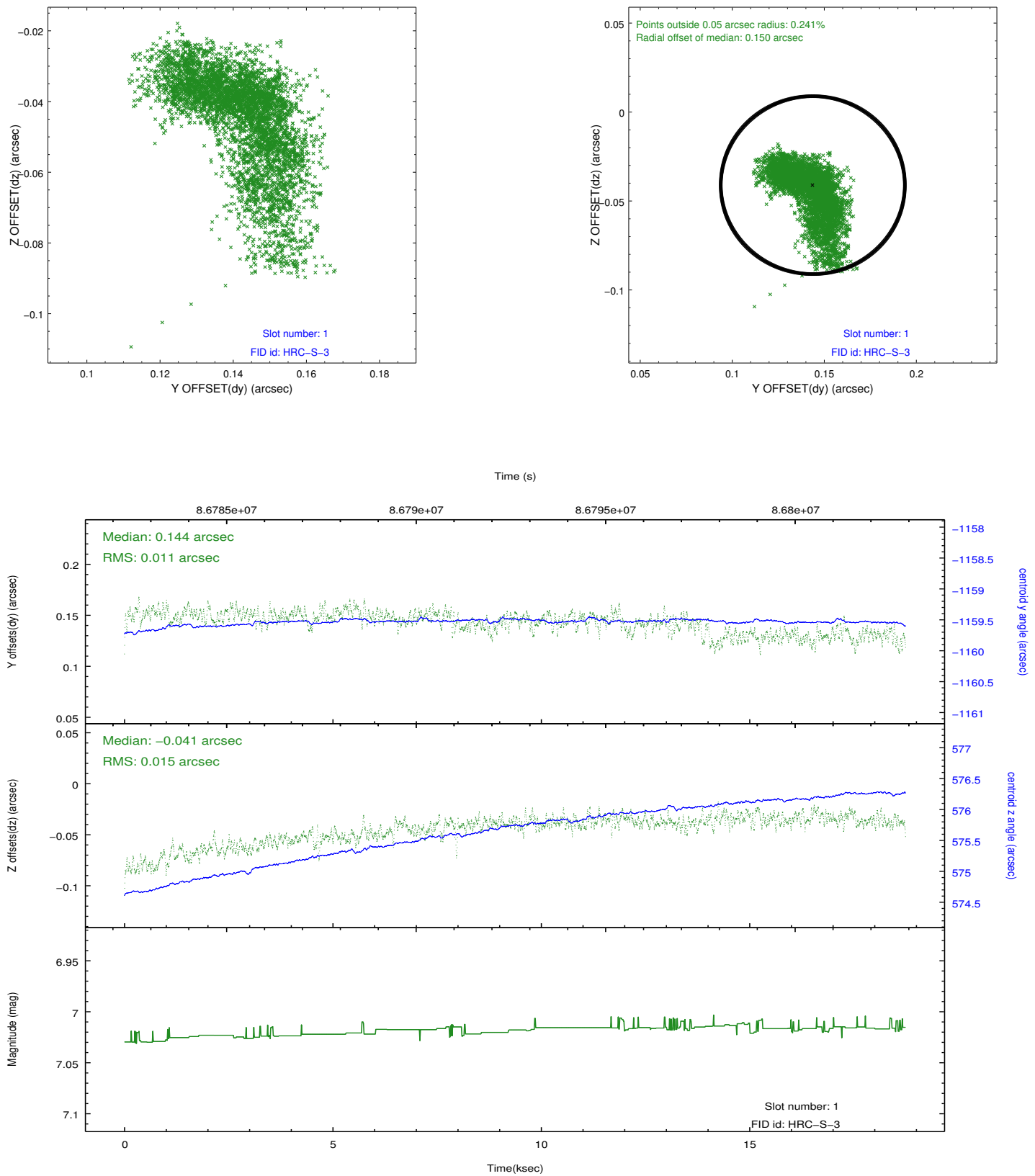


2.5 FID Slots

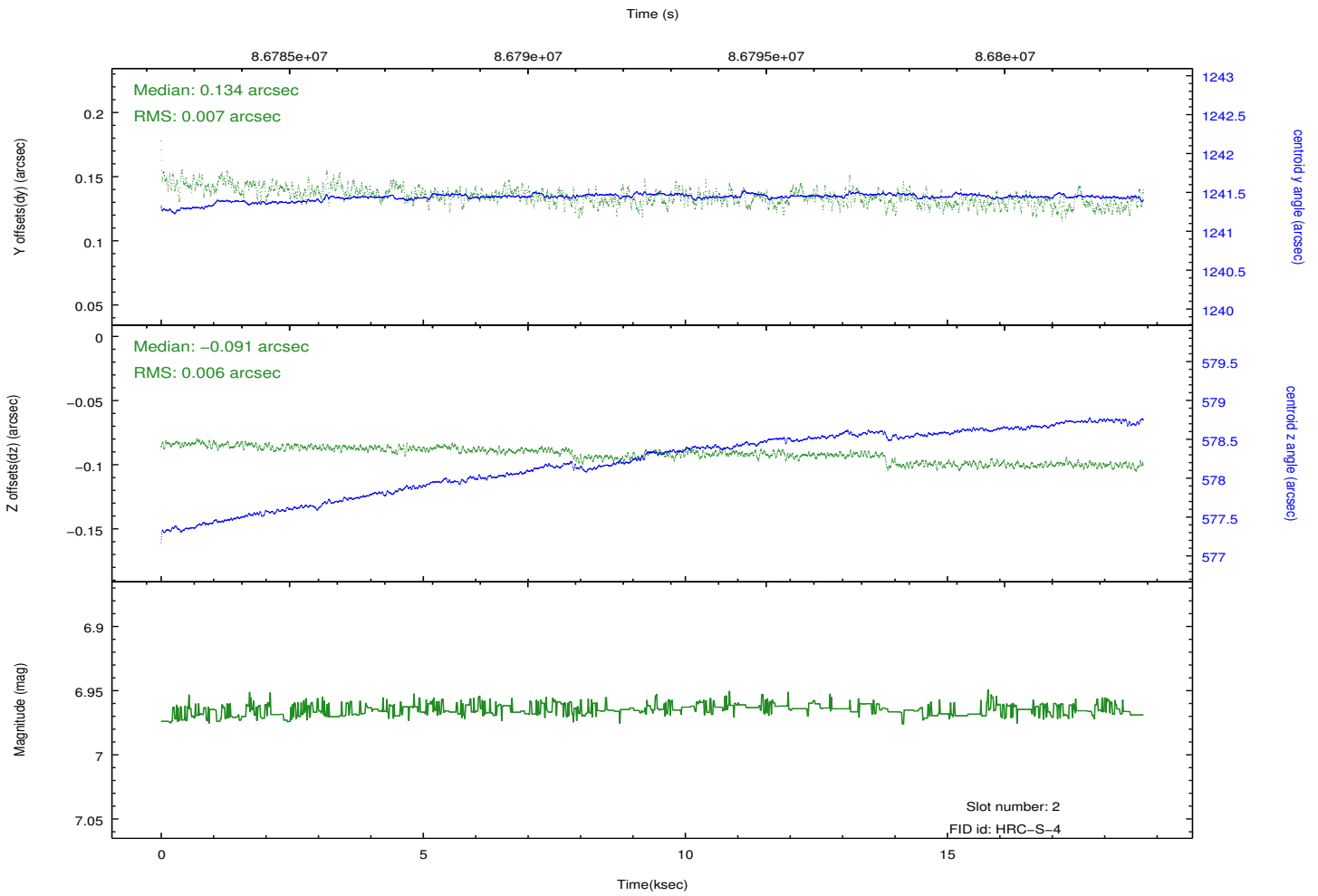
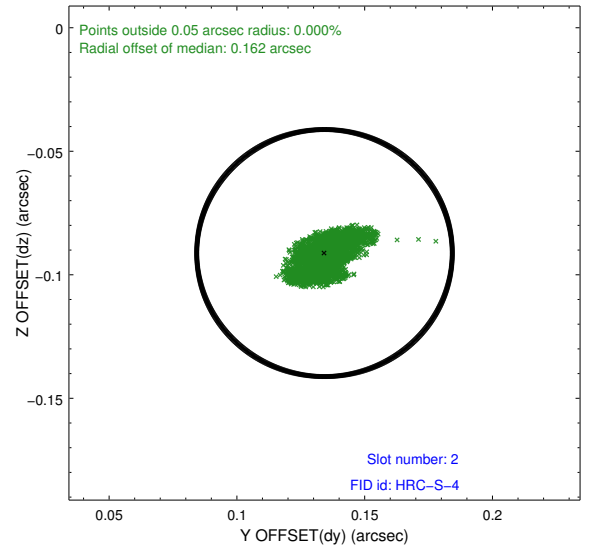
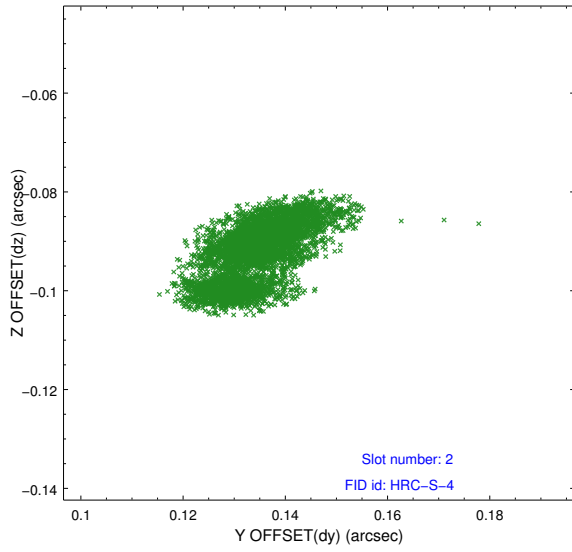
2.5.1 Slot 0



2.5.2 Slot 1

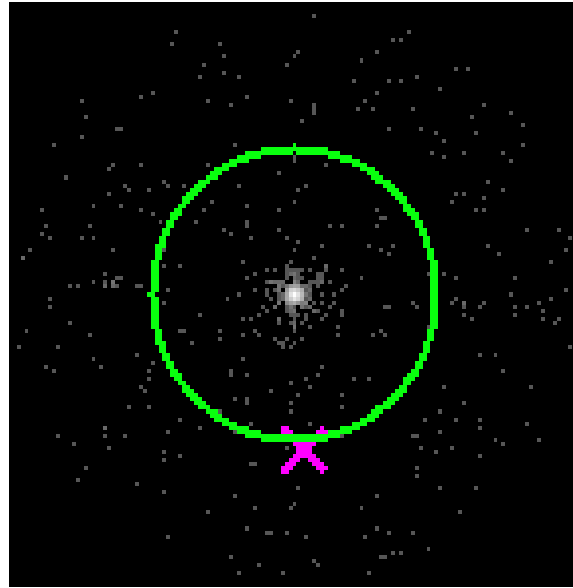


2.5.3 Slot 2

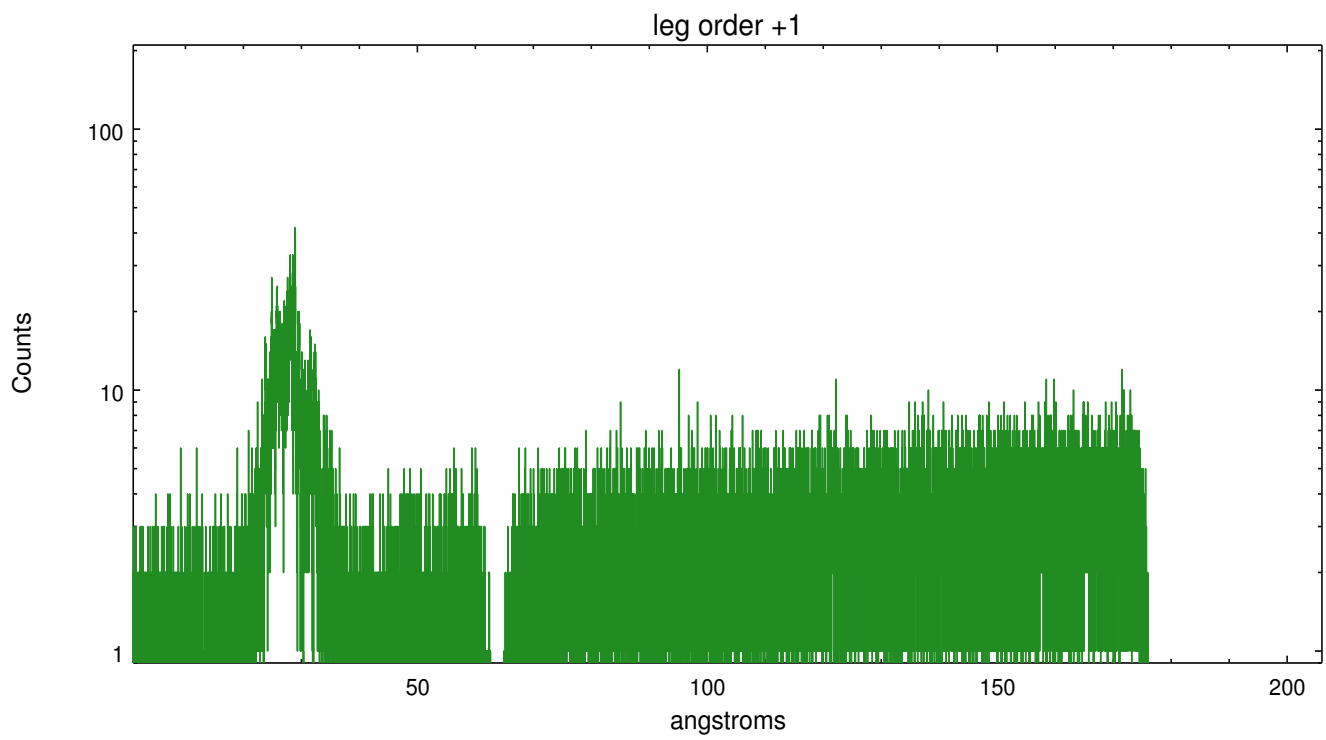
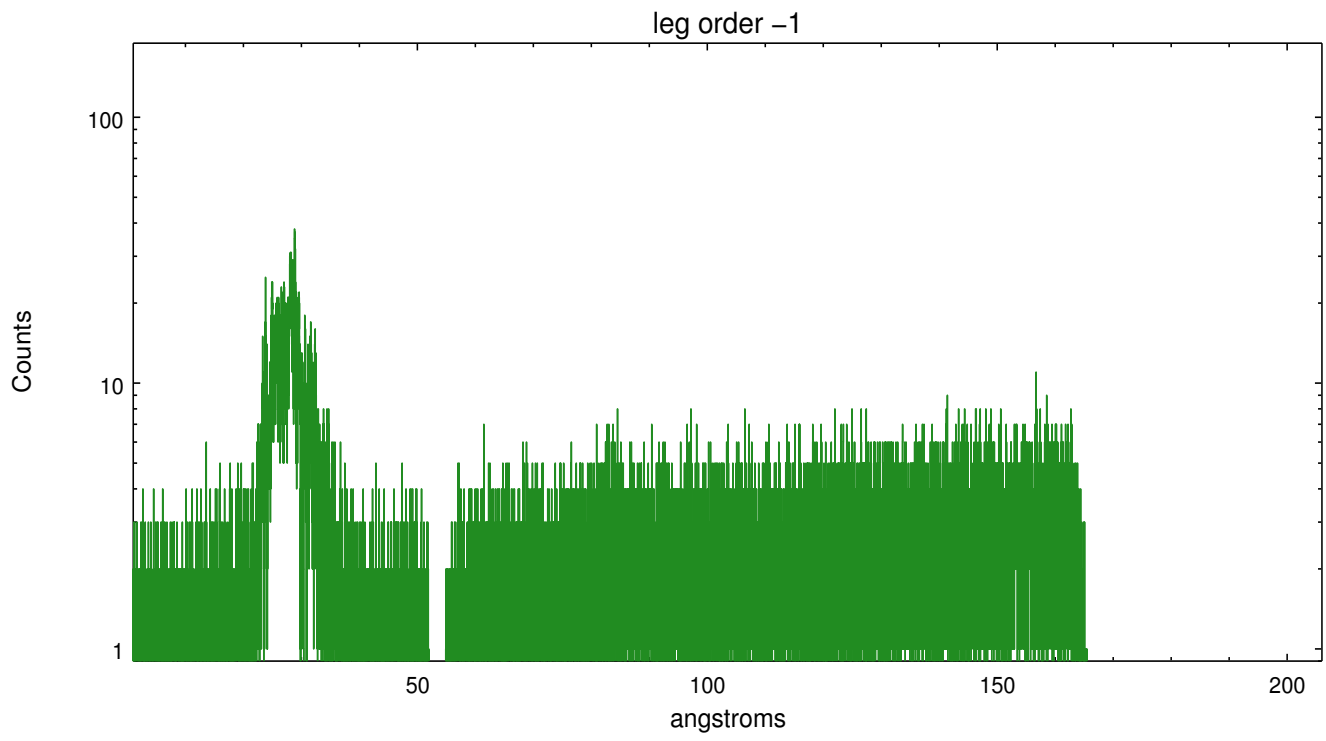


3 Gratings

3.1 LETG Arm



LETG Zero Order



A Summary

A.1 Status

V&V Scientist	Joy Nichols
V&V Date (YYYY-MM-DD)	2012.09.12
V&V Edition	1
V&V Disposition and Status	OK
V&V Charge Time	18.228

A.2 Comments